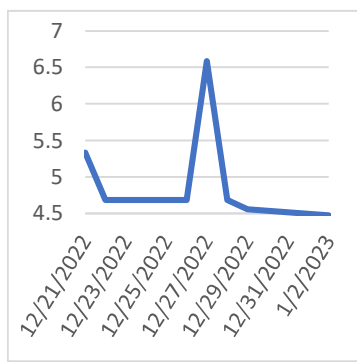


**Tuesday, January 3, 2023**

**Last Week's Prompt  
NYMEX**



**NYMEX NG Futures**

Month	Close	Change
Feb-23	4.475	(0.084)
Mar-23	4.104	(0.013)
Apr-23	3.917	(0.008)
May-23	3.931	(0.003)
Jun-23	4.047	(0.006)
Jul-23	4.157	(0.011)
Aug-23	4.163	(0.008)
Sep-23	4.11	(0.004)
Oct-23	4.174	0.001
Nov-23	4.484	0.007
Dec-23	4.877	0.004
Jan-24	5.113	(0.004)
Feb-24	4.942	0.010
Mar-24	4.398	0.011
Apr-24	3.84	0.005
May-24	3.799	0.006
Jun-24	3.891	0.014
Jul-24	3.984	0.015
Aug-24	4.01	0.016
Sep-24	3.969	0.014
Oct-24	4.055	0.012
Nov-24	4.38	0.011
Dec-24	4.876	0.020
Jan-25	5.173	0.016
<b>1 YR STRIP</b>	<b>4.296</b>	<b>(0.011)</b>
<b>2023</b>	<b>4.3349</b>	<b>(0.003)</b>

**IN THE NEWS**

**Qatar, US top global LNG exports in 2022**

Qatar and the United States have topped global exports of LNG in 2022 in light of the energy crisis amid the ongoing war in Ukraine, Bloomberg revealed on Tuesday based on ship-tracking data. The report found that Doha and Washington exported 81.2 million tonnes of LNG, a figure that represented what Bloomberg described as “a modest increase” for the Gulf state. The data also showed a major increase for the US, which had expanded its exports in 2016, leading it to become a key supplier on a global scale. Last year saw Europe grapple with an energy crisis following Russia’s war on Ukraine, causing many countries in the region to turn to Qatar and the US in an effort to reduce their reliance on Moscow’s gas. Europe previously received 40% of its gas supplies from Moscow as almost a third of shipments passed through... For more info go to <https://bit.ly/3X458nw>

**First LNG tanker arrives at Germany's new floating terminal**

A tanker ship carrying liquified natural gas (LNG) arrived at the newly constructed floating terminal at the north German port of Wilhelmshaven on Tuesday. The Maria Energy vessel was carrying a shipment of LNG from the US that would be converted back into gas and pumped into Germany's energy network. The facility at Wilhelmshaven is one of several that were quickly set up to allow for the replacement of gas that had previously been flowing into Germany through pipelines. Environmental activists said they would protest the arrival of the ship, arguing that Germany should not be importing fossil fuels, especially not gas acquired through fracking. German Chancellor Olaf Scholz inaugurated the facility in mid-December following the arrival of the Höegh Esperanza – a 300-meter-long ship speci... For more info go to <https://bit.ly/3VBNy9D>

**How Will Japan Secure Shipping Insurance for Imports of Russian LNG?**

Japan, the world’s top liquefied natural gas (LNG) importer, is facing its latest challenge in securing vital gas supplies from Russia after Western reinsurers said they would halt marine war insurance for ships traveling in Russian waters from Jan. 1. Having joined other G7 countries in imposing sweeping sanctions on Moscow for the invasion of Ukraine, Japan has been reducing its reliance on Russian oil and coal, but it continues to buy Russian LNG amid elevated prices in a tight global market as Europe ramps up imports. Japan’s Tokio Marine & Nichido Fire Insurance, Sompo Japan Insurance and Mitsui Sumitomo Insurance told shipowners last week that from Jan. 1 they would stop offering insurance coverage for ship damage caused by war in Russian waters, because reinsurers were withdrawing coverage. Without the war ... For more info go to <https://www.insurancejournal.com/news/international/2022/12/29>

**Prompt Natural Gas (NG)  
Daily Sentiment**

**BEARISH**



RESISTANCE  
4.176 & 4.247  
SUPPORT  
4.024 & 3.943

**NATURAL GAS**

Futures	Close
NG	\$4.475
Volume	62,153
Open Int.	96,765

**Contact Us**



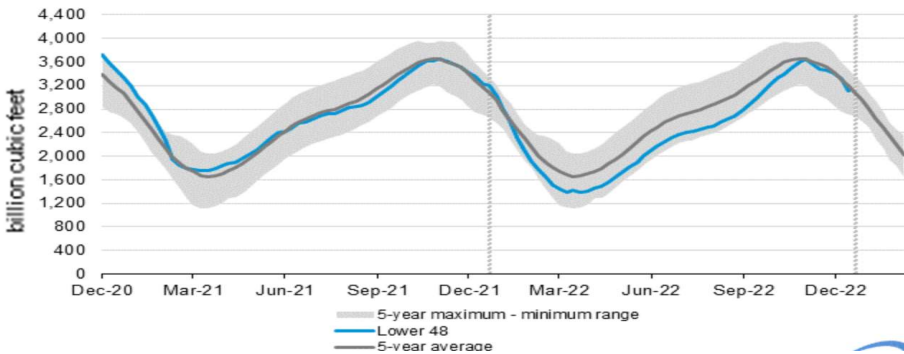
**Mansfield Energy Corp**  
1025 Airport Pkwy  
Gainesville, GA 30501  
[www.mansfield.energy](http://www.mansfield.energy)

info@mansfieldoil.com  
Phone: (800) 695 - 6626

# NATURAL GAS NEWS



## WEEKLY GAS IN UNDERGROUND STORAGE WITH 5-YR RANGE



for week ending December 23, 2022 | Released: December 29, 2022 | Next Release: January 05, 2023

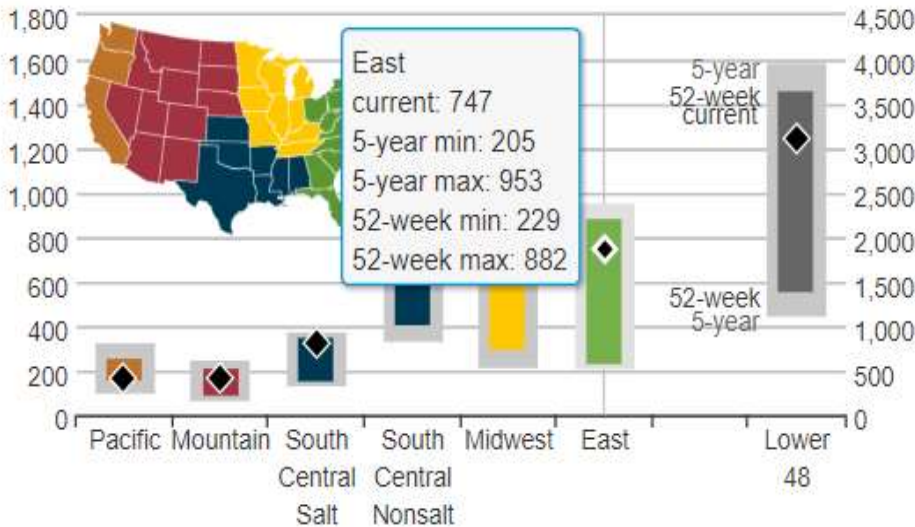
### EIA Weekly Storage Actual and Surveys for

December 23, 2022

Released December 29, 2022

Range	-182 to -213
S&P Global	-182
Investing.com	-201

## UNDERGROUND WORKING NAT GAS STORAGE AS OF 12/23/2022



### Total Working Gas In Storage

**3112 BCF**

- 213 BCF (LAST WEEK)
- 133 BCF (LAST YEAR)
- 85 BCF (5-YEAR AVG)

### U.S. Natural Gas Supply

#### Gas Week -

Average Daily Values (BCF/D):

Last Year (BCF/d)

Dry Production -	96.4
Total Supply -	101.7

Last Week (BCF/d)

Dry Production -	100.2
Total Supply -	105.6

[Next Report: January 12]

### U.S. Natural Gas Demand

#### Gas Week -

Average Daily Values (BCF/D):

Last Year (BCF/d)

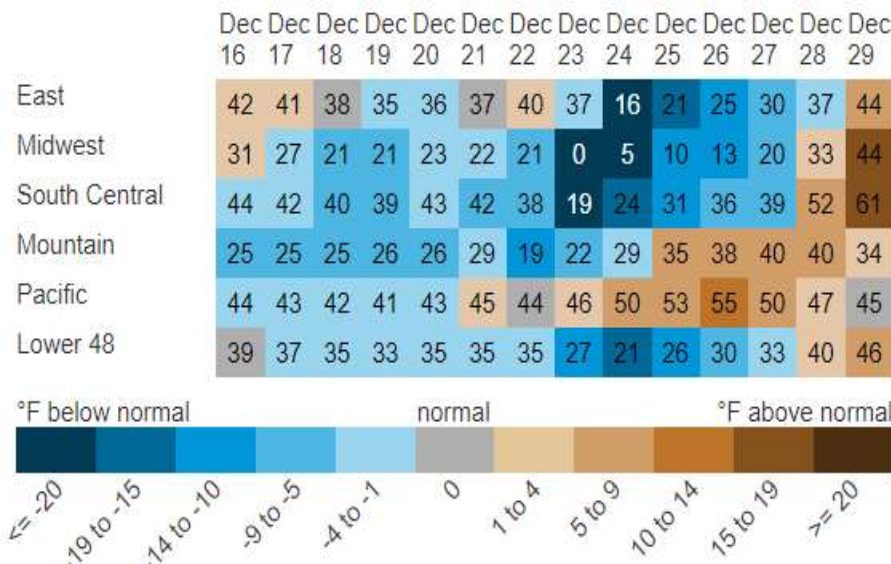
Power -	29.9
Total Demand -	114.3

Last Week (BCF/d)

Power -	31.2
Total Demand -	118.2

[Next Report: January 12]

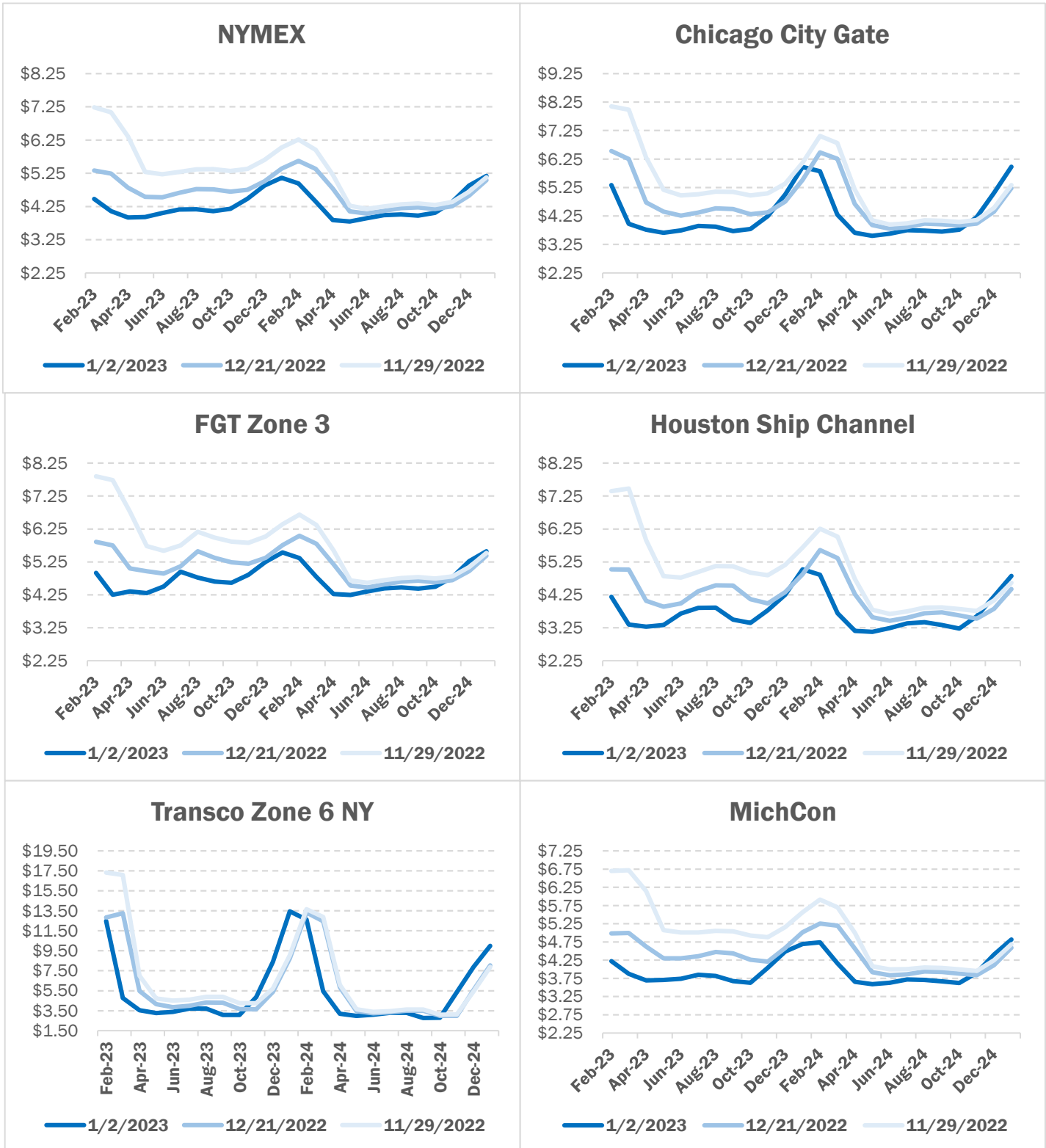
## REGIONAL AVG TEMPERATURES AND DEPARTURE FROM NORMAL



# NATURAL GAS NEWS



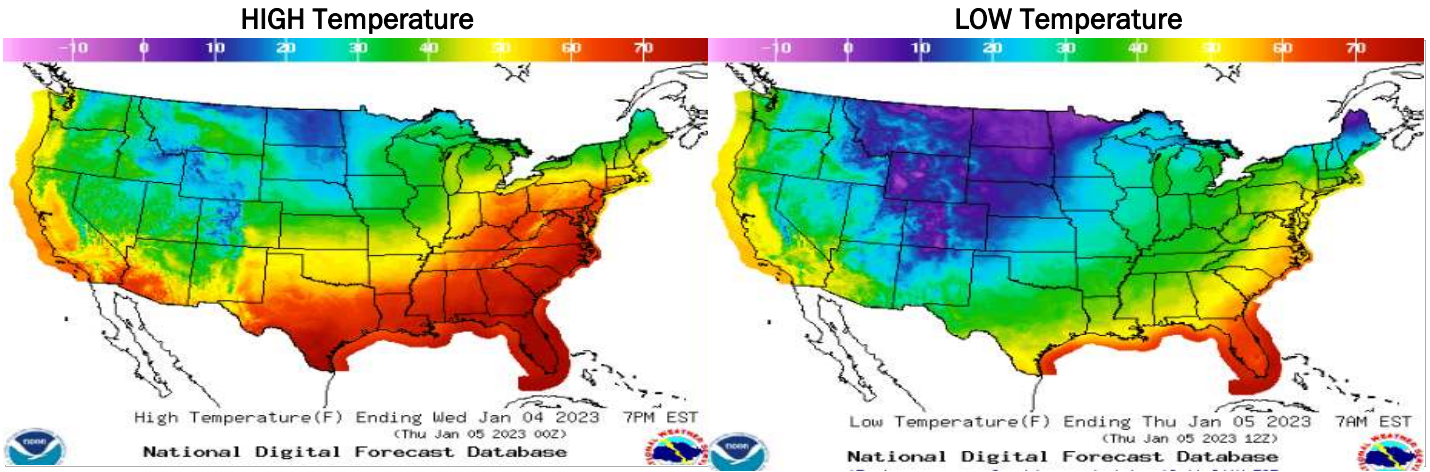
## NATURAL GAS BASIS FUTURES



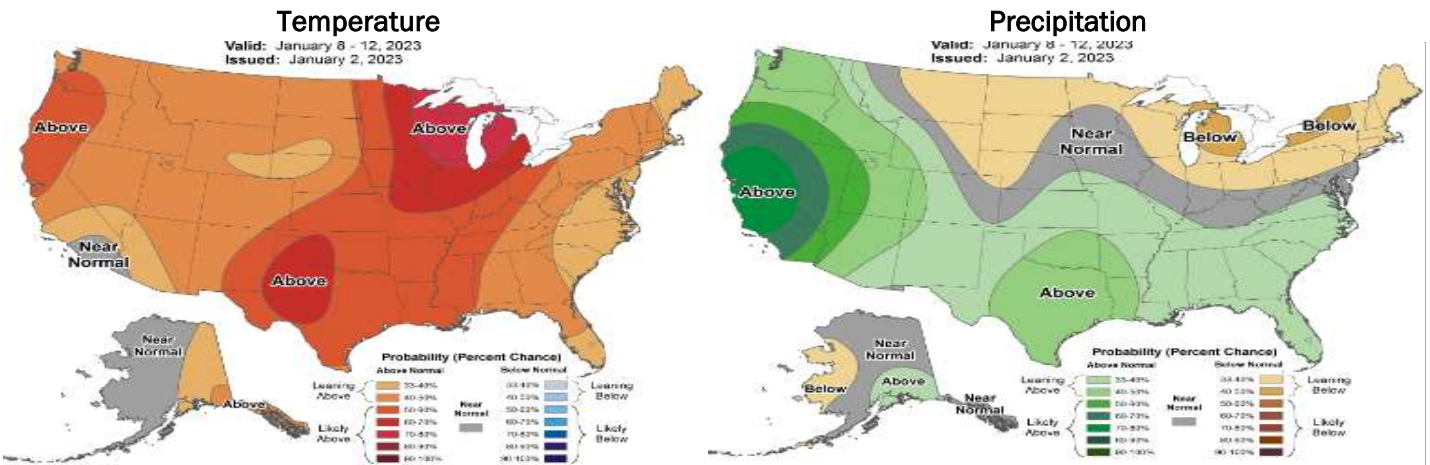
# NATURAL GAS NEWS



## WEATHER - HIGH / LOW TEMPERATURE - TOMORROW



## WEATHER - 6 - 10 DAY OUTLOOK - NOAA



## WEATHER - 8 - 14 DAY OUTLOOK - NOAA

