

NATURAL GAS



NEWS

Thursday, October 7, 2021

Last Week's Prompt NYMEX



NYMEX NG Futures

Month	Close	Change
Nov-21	5.675	(0.637)
Dec-21	5.803	(0.629)
Jan-22	5.888	(0.634)
Feb-22	5.787	(0.620)
Mar-22	5.437	(0.559)
Apr-22	3.997	(0.199)
May-22	3.841	(0.165)
Jun-22	3.877	(0.158)
Jul-22	3.919	(0.155)
Aug-22	3.922	(0.156)
Sep-22	3.901	(0.157)
Oct-22	3.931	(0.157)
Nov-22	4.014	(0.158)
Dec-22	4.172	(0.157)
Jan-23	4.261	(0.148)
Feb-23	4.174	(0.137)
Mar-23	3.864	(0.124)
Apr-23	3.204	(0.087)
May-23	3.122	(0.068)
Jun-23	3.168	(0.066)
Jul-23	3.22	(0.066)
Aug-23	3.234	(0.067)
Sep-23	3.233	(0.066)
Oct-23	3.269	(0.065)
1 YR STRIP	4.6648	(0.352)
2021	5.0381	(0.450)

IN THE NEWS

A cargo ship of LNG costs \$281m. It was just \$10m in 2020

Soaring international gas prices have triggered a near 30-fold spike in the value of a single spot cargo ship of LNG to more than \$US205 million (\$281.8 million) in a price surge that delivers a windfall to gas producers but threatens to derail the global economic recovery. Woodside Petroleum, a beneficiary of soaring prices for liquefied natural gas, voiced worries about fall-out from the "extreme" prices as Asian tariffs took yet another leap higher. The 40 per cent surge in Asian benchmark LNG prices to more than \$US56 per million British thermal units, while shortlived, has sent shockwaves through the global gas market, given the cold Northern Hemisphere winter has yet to kick in. At that one-off price, a typical cargo of 70,000 tonnes of LNG costs about \$US205 million, up from less than \$US7.3 million in June... For more info go to <https://bit.ly/3adVZT8>

LNG shipping rates climb to multi-month highs on demand for vessels

Freight rates to ship liquefied natural gas (LNG) rose to multi-month highs this week as a surge in demand for the super-chilled fuel has increased the need for vessels to move supplies, multiple trade and shipping sources said. The daily charter rate for a tri-fuel diesel-electric (TFDE) vessel that can carry 160,000 cubic metres of LNG to Pacific basin ports rose to \$76,000 a day on Tuesday, the highest since February, according to data from Spark Commodities. For the same type of ship moving in the Atlantic Basin, the rate rose to \$67,750 a day, the highest since August, Spark data showed. European TRNLTFMc1 and Asian LNG-AS natural gas benchmarks have surged to record highs and U.S. prices NGc1 have climbed to a 12-year high as demand for the fuel has increased amid low inventories. "R... For more info go to <https://bit.ly/3BqmYH6>

Oil, gas, LNG to be Shell's 'cash engines' for decades: CEO Van Beurden

Shell plans to keep investing in oil, gas and liquefied natural gas as the "cash engines" for the energy transition and expects its giant LNG Canada project, targeted at Asian markets, will operate well into the second half of the century, CEO Ben van Beurden said Oct. 6. Receive daily email alerts, subscriber notes & personalize your experience. Register Now Speaking at the online Energy Intelligence Forum, Van Beurden dismissed notions of winding down the upstream oil and gas business as "silly" and said there was "nothing illegitimate" about producing oil and gas. In the global energy system, "to just believe that you can switch 100% from coal to 100% renewables...is a little bit of a silly notion," he said. Van Beurden reiterated the company would diversify away from oil and gas into power provision, biofuels,... For more info go to <https://bit.ly/3oGaAiB>

Prompt Natural Gas (NG) Daily Sentiment

BULLISH



RESISTANCE
6.206 & 6.738
SUPPORT
5.403 & 5.132

NATURAL GAS

Futures	Close
NG	\$5.68
Volume	238,250
Open Int.	94,876

Contact Us



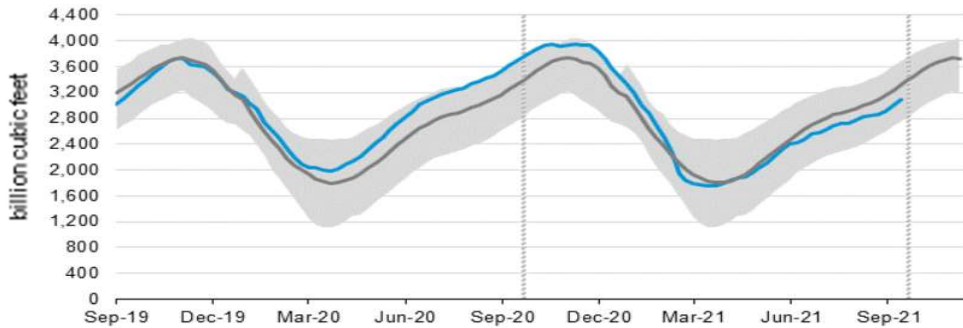
Mansfield Energy Corp
1025 Airport Pkwy
Gainesville, GA 30501
www.mansfield.energy

info@mansfieldoil.com
Phone: (800) 695 - 6626

NATURAL GAS NEWS



WEEKLY GAS IN UNDERGROUND STORAGE WITH 5-YR RANGE



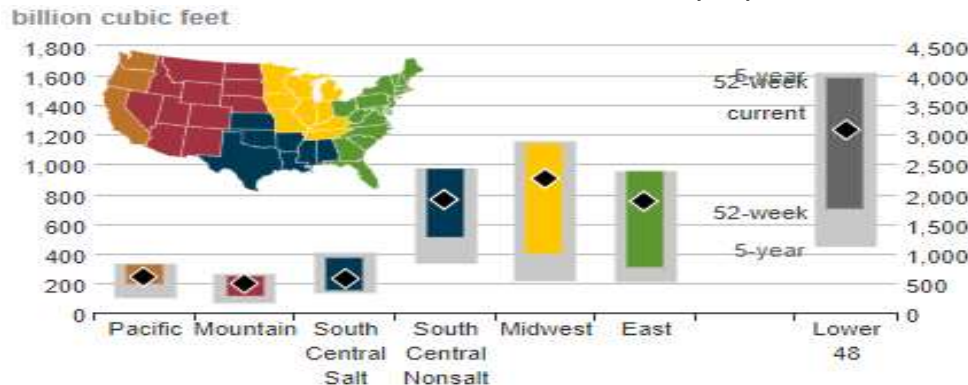
for week ending September 17, 2021 | Released: September 23, 2021 at 10:30 a.m. | Next Release: September 30, 2021

EIA Weekly Storage Actual and Surveys for October 1, 2021

Released October 07, 2021

Range	71 to 120
S&P Platts	71
NGI	114
Investing.com	118

UNDERGROUND WORKING NAT GAS STORAGE AS OF 9/24/2021



Total Working Gas In Storage

3288 BCF

- +118 BCF (LAST WEEK)
- 532 BCF (LAST YEAR)
- 176 BCF (5-YEAR AVG)

Underground storage capacity utilization



REGIONAL AVG TEMPERATURES AND DEPARTURE FROM NORMAL

degrees Fahrenheit

	Sep 17	Sep 18	Sep 19	Sep 20	Sep 21	Sep 22	Sep 23	Sep 24	Sep 25	Sep 26	Sep 27	Sep 28	Sep 29	Sep 30
East	73	75	72	70	69	72	69	65	65	65	67	68	65	63
Midwest	70	70	72	72	67	59	57	60	59	63	68	67	68	69
South Central	79	80	79	82	78	70	67	68	70	72	74	77	77	76
Mountain	67	69	69	63	61	64	65	64	65	65	66	64	60	58
Pacific	64	64	63	66	70	70	69	69	68	64	62	60	60	66
Lower 48	71	72	71	71	70	68	66	65	65	65	67	67	66	66

U.S. Natural Gas Supply Gas Week 09/23 - 09/29

Average Daily Values (BCF/D):

Last Year (BCF/d)

Dry Production -	87.6
Total Supply -	91.2

Last Week (BCF/d)

Dry Production -	92.5
Total Supply -	97.4

[Next Report: October 07]

U.S. Natural Gas Supply Gas Week -

Average Daily Values (BCF/D):

Last Year (BCF/d)

Dry Production -	32.9
Total Supply -	81.4

Last Week (BCF/d)

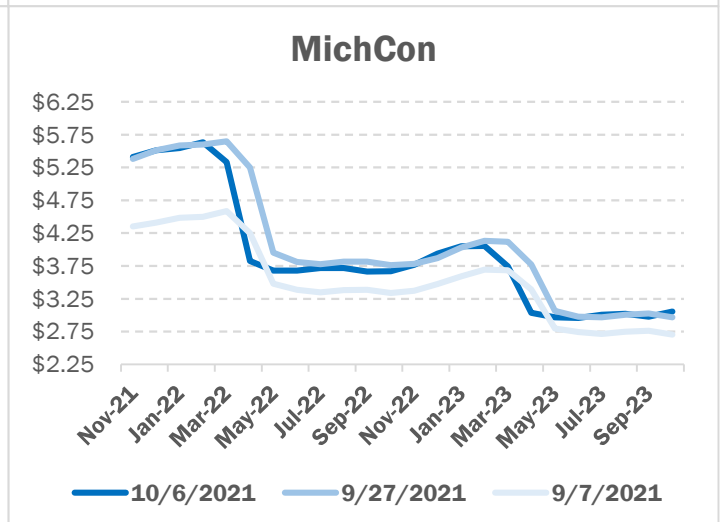
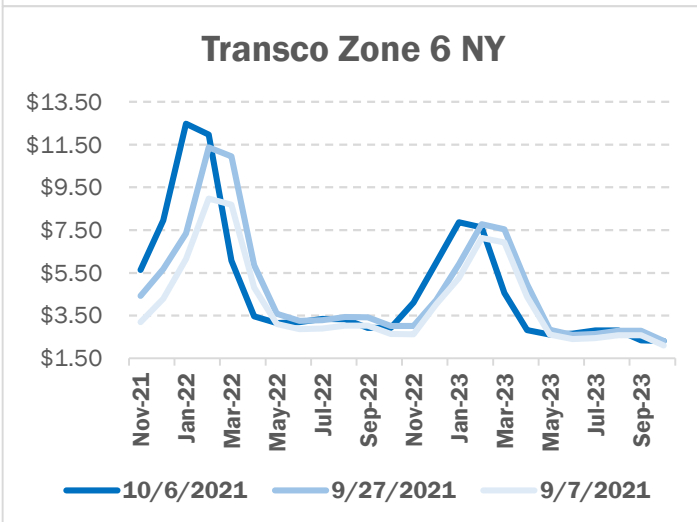
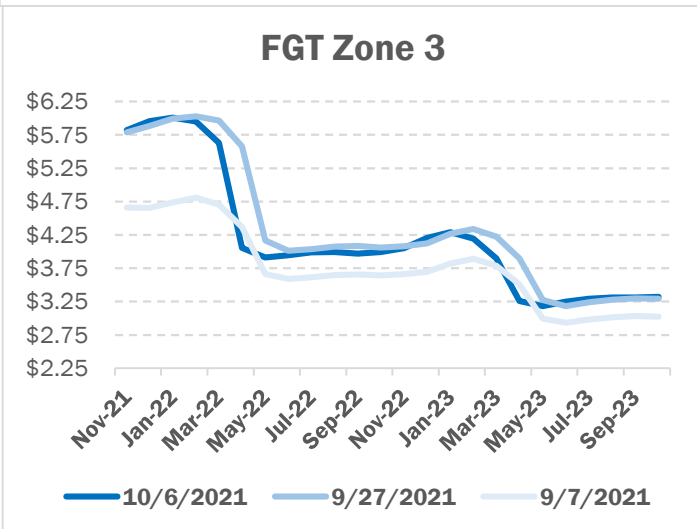
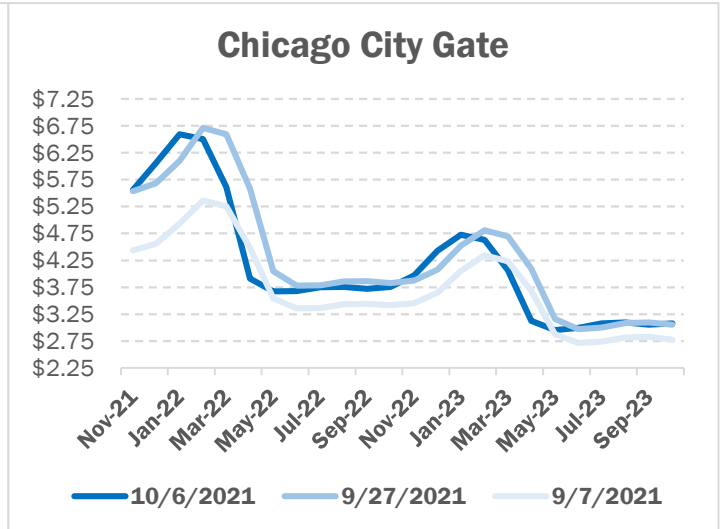
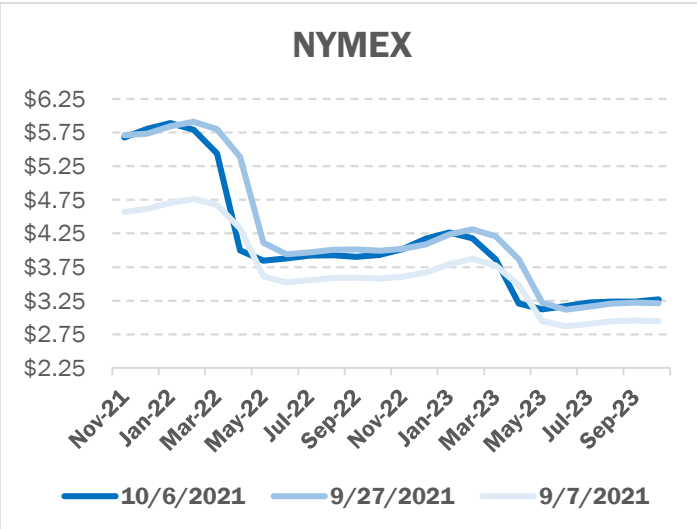
Dry Production -	33.0
Total Supply -	84.8

[Next Report: October 07]

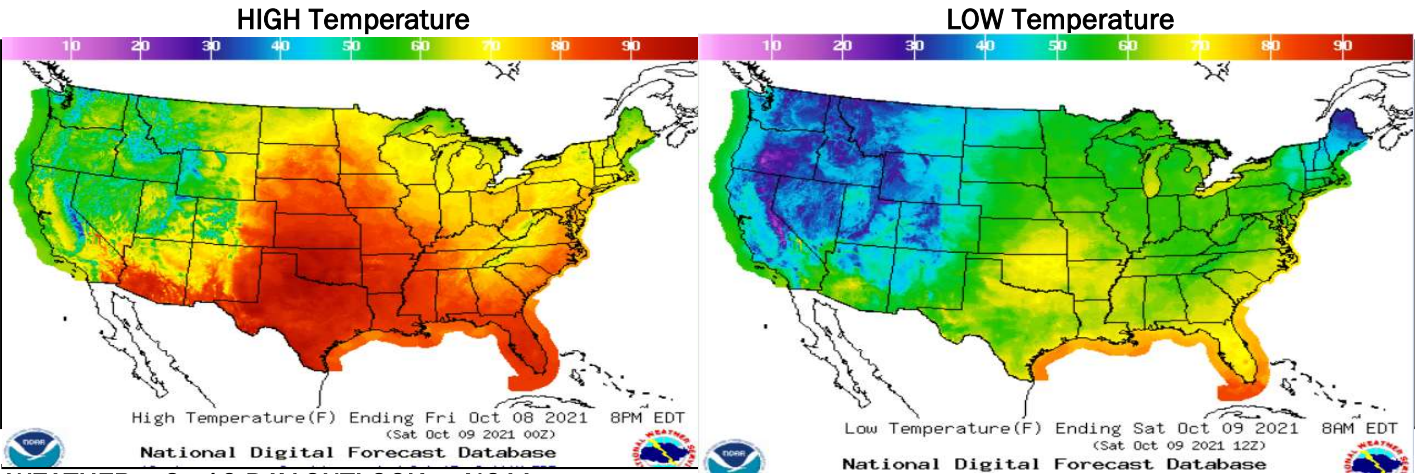
NATURAL GAS NEWS



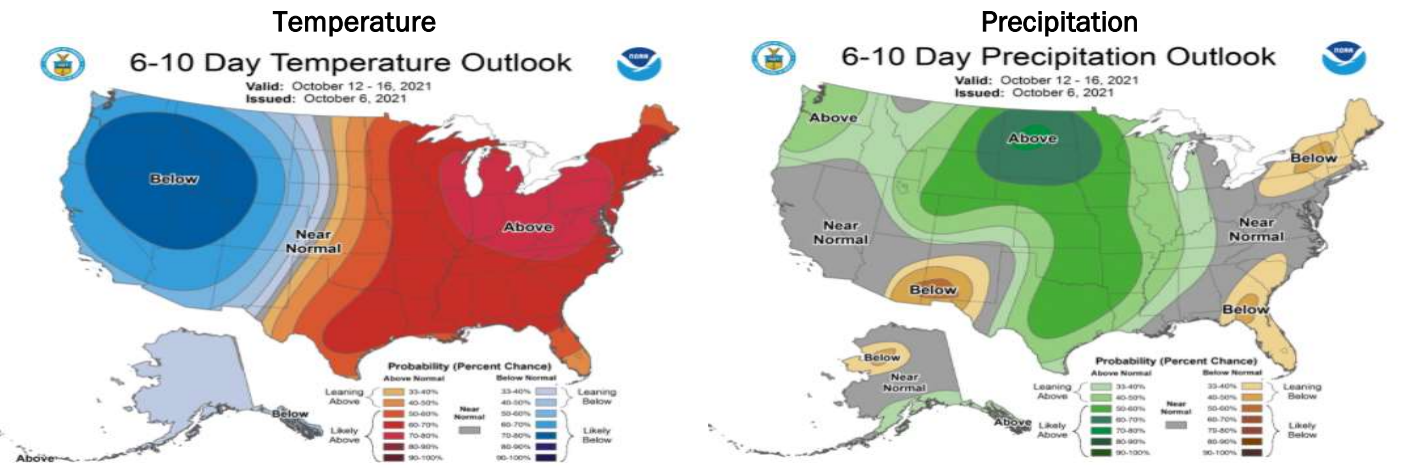
NATURAL GAS BASIS FUTURES



WEATHER - HIGH / LOW TEMPERATURE - TOMORROW



WEATHER - 6 - 10 DAY OUTLOOK - NOAA



WEATHER - 8 - 14 DAY OUTLOOK - NOAA

