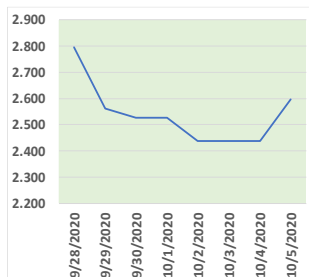


# NATURAL GAS



OCTOBER 5TH, 2020

## Last Week's Prompt NYMEX



## NYMEX NG Futures

Month	Close	Change
Nov-20	2.899	0.372
Dec-20	3.277	0.750
Jan-21	3.451	0.389
Feb-21	3.348	0.144
Mar-21	3.239	0.076
Apr-21	2.834	(0.215)
May-21	2.810	0.049
Jun-21	2.801	0.082
Jul-21	2.863	0.115
Aug-21	2.842	0.057
Sep-21	2.860	0.067
Oct-21	2.858	0.078
Nov-21	2.942	0.133
Dec-21	3.049	0.183
Jan-22	3.179	0.177
Feb-22	3.102	(0.002)
Mar-22	2.945	(0.109)
Apr-22	2.482	(0.395)
May-22	2.438	(0.017)
Jun-22	2.466	0.073
Jul-22	2.494	0.078
Aug-22	2.485	0.039
Sep-22	2.494	0.039
Oct-22	2.495	0.052
1YR STRIP 2020	3.002	0.161
	3.020	0.171

## IN THE NEWS

US mediation on maritime border with Israel could help gas exploration: Lebanese Speaker— The US is mediating between Lebanon and Israel on the demarcation of their maritime border, and a deal could help Lebanon explore for oil and gas in Blocks 8 and 9 in the Mediterranean, Lebanese House Speaker Nabih Berri was quoted as saying

- **US mediation on maritime border with Israel could help gas exploration: Lebanese Speaker**
- **Japan remains biggest buyer of US LNG for second month in September as prices rise: Platts cFlow**
- **Natural Gas: How Quickly Will Cold Weather Spur Power Burns?**

Oct. 1, by the state-run national news agency. "The US is exerting maximum efforts in order to manage the negotiations and successfully conclude them as soon as possible," Berri said. The conflict between Israel and Lebanon had prevented Beirut from starting exploration in Blocks 8 and 9, which lie in disputed waters. "We welcome today's announcement by Israel and Lebanon on their agreement to begin discussions on the maritime boundary," US Secretary of State Mike Pompeo said on twitter. "This offers the potential for greater stability, security, and prosperity for citizens in both nations." For more on this story visit [spgglobal.com](https://spgglobal.com) or click <https://bit.ly/3ivngSU>.

Japan remains biggest buyer of US LNG for second month in September as prices rise: Platts cFlow— Japan was the largest buyer of US LNG in September, in line with August, and Chinese deliveries picked up as US Gulf Coast netbacks from Asia strengthened from lows seen during the height of the summer, showed data from cFlow, S&P Global Platts trade-flow software. Elevated spreads from the Dutch TTF and Platts JKM, the benchmark for spot-traded LNG deliveries to northeast Asia, should incentivize robust US exports this fall as capacity holders race to generate cash flow before the year wraps up. Feed gas deliveries to major US liquefaction terminals totaled 7.1 Bcf/d on Oct. 2, up approximately 100 MMcf/d from the day before, S&P Global Platts Analytics data showed. For more on this story visit [spgglobal.com](https://spgglobal.com) or <https://bit.ly/3niFMRO>.

Natural Gas: How Quickly Will Cold Weather Spur Power Burns?— The fourth quarter is finally here and with it, the true start of the cold season. The question is how long will it be before gas burns for power truly take off? As the market awaits another weekly update on U.S. natural gas stockpiles, the trade is betting that utilities injected some 79 billion cubic feet from last week's production after what was burnt for power generation, into underground caverns. That injection would be higher than the 66 bcf storage build in the previous week. Dan Myers, analyst at Houston-based gas risk consultancy Gelber & Associates, said in an email to the firm's clients: "Subsequent injections may fluctuate on both sides of average but should remain relatively strong, given weather expectations through the first half of October."

For more on this story visit [investing.com](https://investing.com) or <https://bit.ly/2GFc20E>.

## Prompt Natural Gas (NG) Daily Sentiment

BEARISH



RESISTANCE

2.535 & 2.632

SUPPORT

2.357 & 2.276

## NATURAL GAS

Futures	Close	Change
NG	2.139	(0.109)
Volume	25,734	(19,141)
Open Int.	20,304	16,022

## Contact Us



### Mansfield Energy Corp

1025 Airport Pkwy  
Gainesville, GA 30501

[www.mansfield.energy](http://www.mansfield.energy)

[info@mansfieldoil.com](mailto:info@mansfieldoil.com)

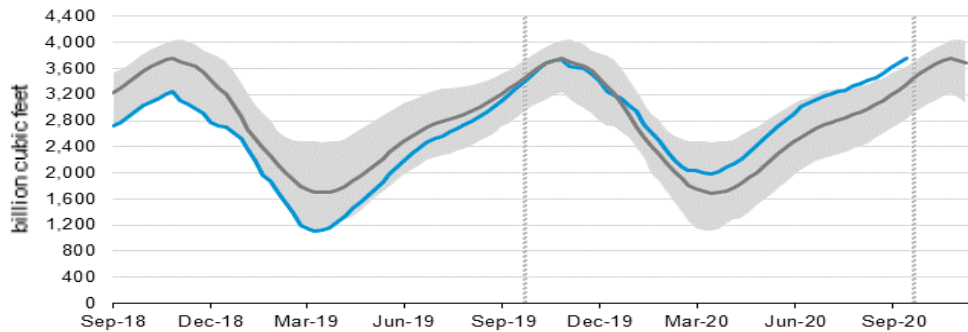
Phone: (800) 695-6626





# NATURAL GAS NEWS

## WEEKLY GAS IN UNDERGROUND STORAGE WITH 5-YR RANGE



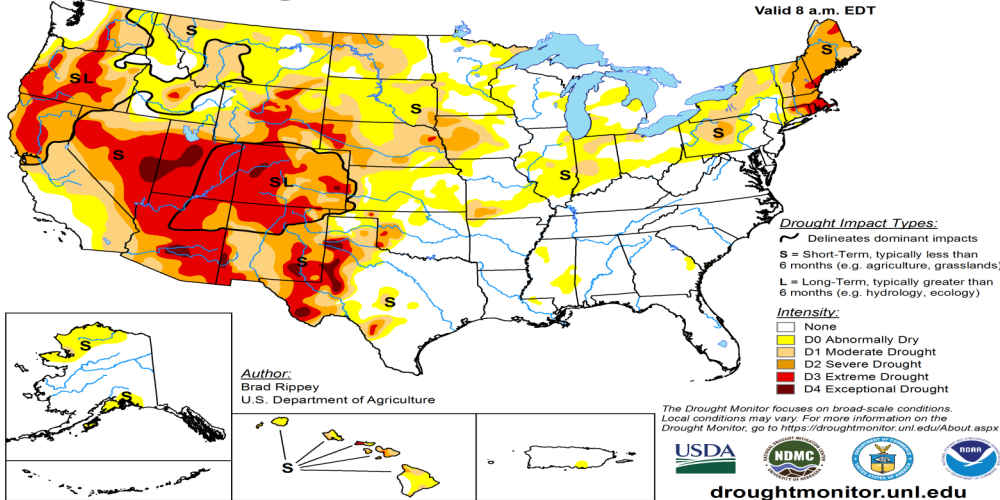
for week ending September 25, 2020 | Released: October 1, 2020 at 10:30 a.m. | Next Release: October 8, 2020

**EIA Weekly NG Storage Actual and Surveys for September 25th, 2020**  
 Released October 1st, 2020  
 Range – +74 to +92  
 IHS Markit – +74  
 SMC Report – +87  
 Refinitiv – +75

## US DROUGHT MONITOR

### U.S. Drought Monitor

September 29, 2020  
 (Released Thursday, Oct. 1, 2020)  
 Valid 8 a.m. EDT



## Total Working Gas In Storage

**3,756 BCF**

- +79 BCF (LAST WEEK)
- +471 BCF (LAST YEAR)
- +4 BCF (5-YR AVG)

## U.S. Natural Gas Supply Gas Week 9/24– 9/30

**Average daily values (BCF/D):**

- Last Year (BCF/d)  
Dry Production – + 95.0  
Total Supply – +99.6
- Last Week (BCF/d)  
Dry Production – +87.0  
Total Supply – +90.5

[NEXT REPORT ON October 8th]

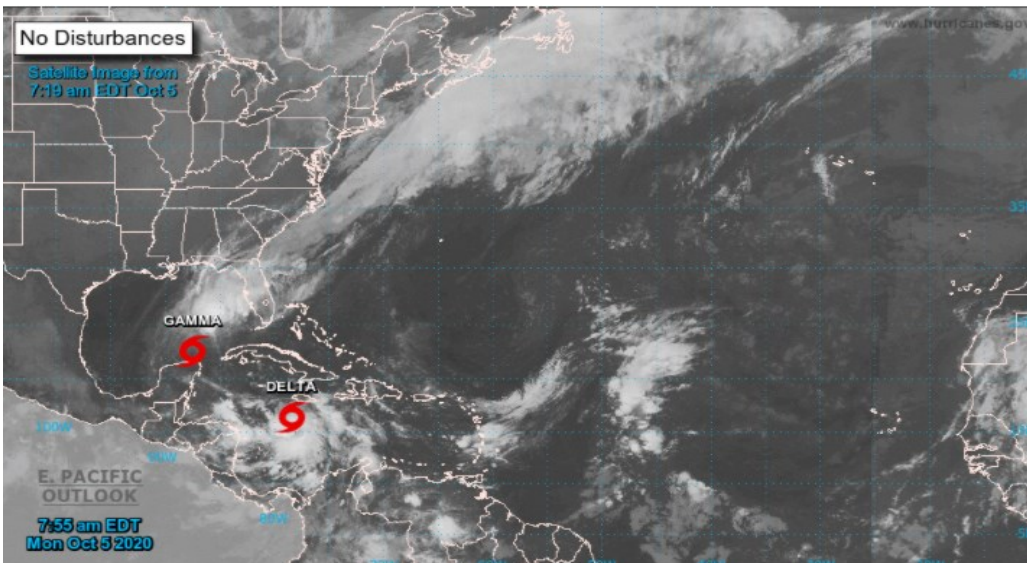
## U.S. Natural Gas Demand Gas Week 9/24– 9/30

**Average daily values (BCF/D):**

- Last Year (BCF/d)  
Power – +34.7  
Total Demand – +83.2
- Last Week (BCF/d)  
Power – +29.3  
Total Demand – +78.7

[NEXT REPORT ON October 8th]

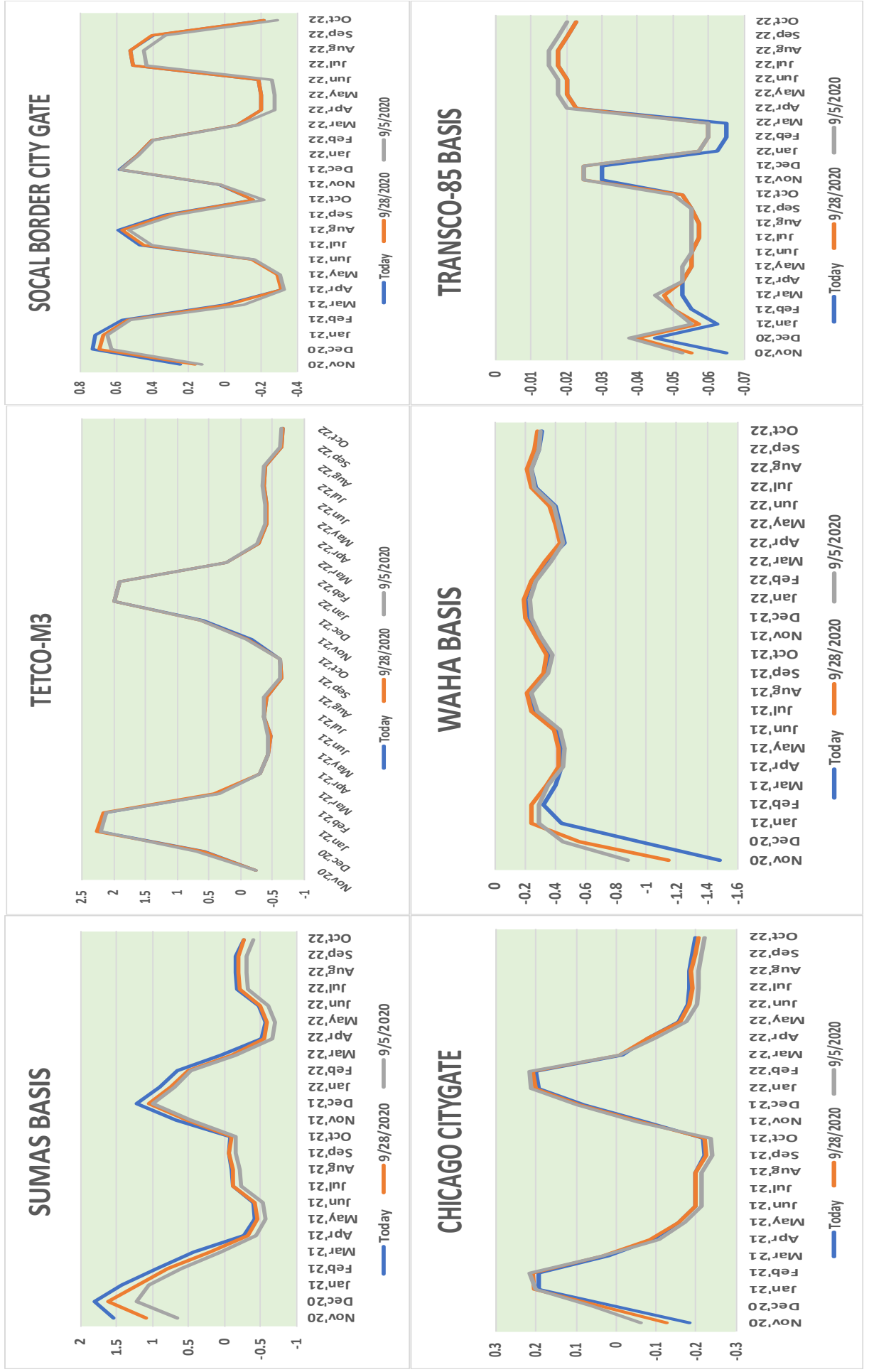
## TWO-DAY TROPICAL WEATHER OUTLOOK





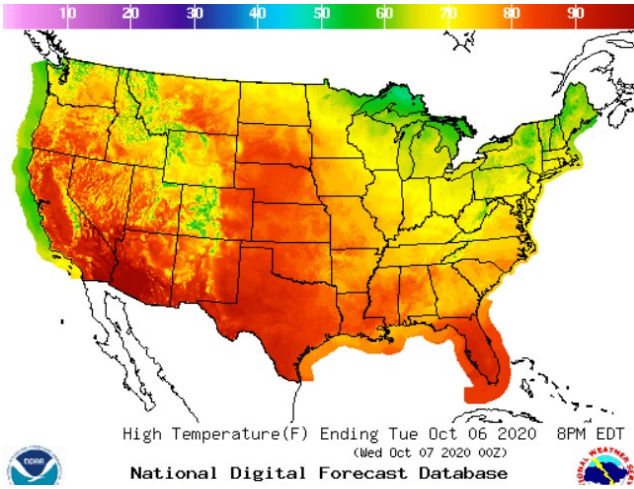
**NATURAL GAS NEWS**

**NATURAL GAS BASIS FUTURES**

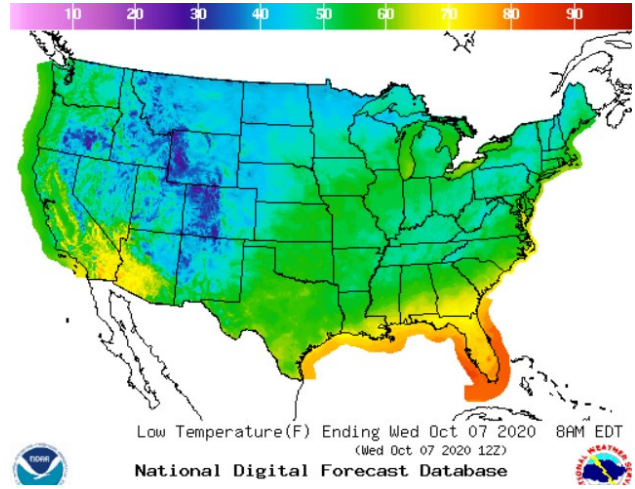


WEATHER – HIGH/LOW TEMPERATURE – TOMORROW

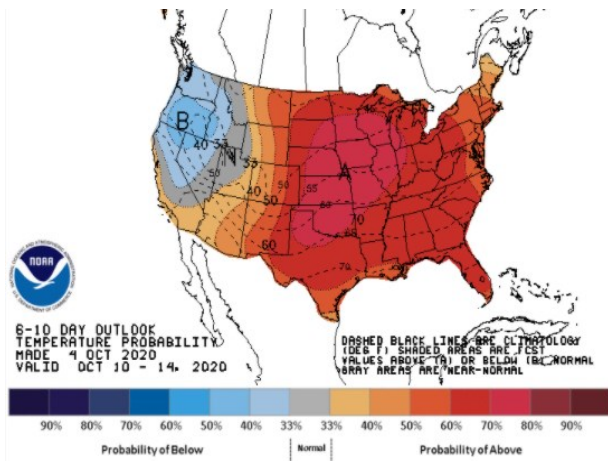
HIGH Temperature



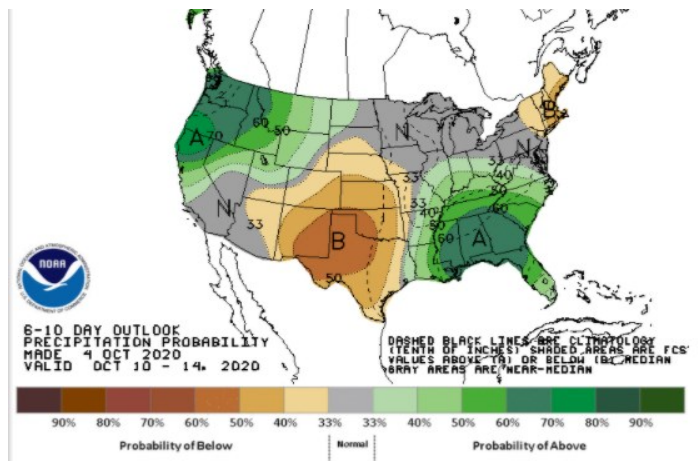
LOW Temperature



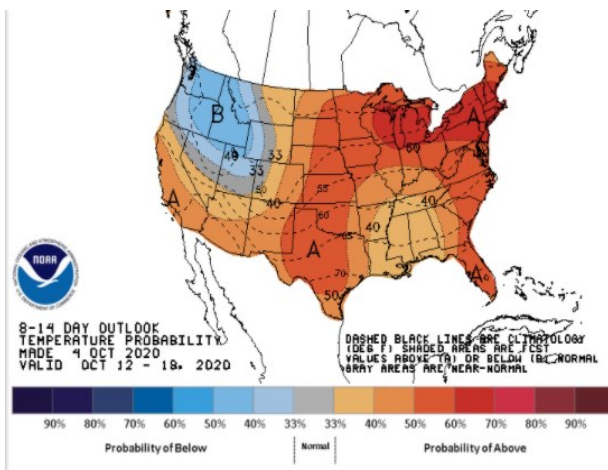
WEATHER – 6 TO 10 DAY OUTLOOK – NOAA  
Temperature



Precipitation



WEATHER – 8 TO 14 DAY OUTLOOK – NOAA  
Temperature



Precipitation

