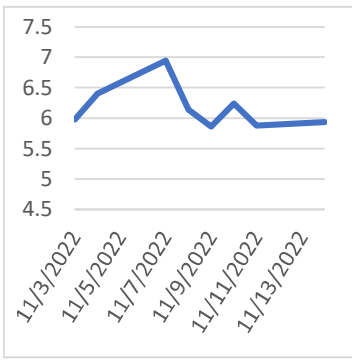


NATURAL GAS



Tuesday, November 15, 2022

**Last Week's Prompt
NYMEX**



NYMEX NG Futures

Month	Close	Change
Dec-22	5.933	0.054
Jan-23	6.299	0.036
Feb-23	6.05	0.028
Mar-23	5.41	0.041
Apr-23	4.726	(0.002)
May-23	4.706	(0.006)
Jun-23	4.784	(0.003)
Jul-23	4.868	0.000
Aug-23	4.877	(0.003)
Sep-23	4.817	(0.007)
Oct-23	4.87	(0.009)
Nov-23	5.175	(0.001)
Dec-23	5.503	0.003
Jan-24	5.684	0.000
Feb-24	5.456	0.002
Mar-24	4.903	(0.033)
Apr-24	4.206	(0.050)
May-24	4.142	(0.039)
Jun-24	4.204	(0.035)
Jul-24	4.272	(0.035)
Aug-24	4.294	(0.032)
Sep-24	4.272	(0.030)
Oct-24	4.357	(0.027)
Nov-24	4.681	(0.023)
1 YR STRIP	5.2096	0.011
2023	5.1738	0.006

IN THE NEWS

High LNG Prices Have Sparked Demand Destruction In India

India's industrial gas customers have been buying less LNG from storage sites due to high spot prices, which has sent LNG storage levels at import terminals to near capacity, traders familiar with the situation told Bloomberg on Thursday. The very high spot gas prices have resulted in demand destruction for India's industrial customers who have resorted to alternative fuels such as oil products and domestic supplies of gas, according to the traders. The lower demand for LNG has created a glut of the imported fuel with some storage tanks full and potentially delaying additional LNG imports into India, Bloomberg's sources said. Lower demand from India could be a relief for global LNG prices just as the winter in Europe approaches. This year, Europe has been outbidding Asian customers as it has scrambled to secu... For more info go to <https://bit.ly/3UWgWXX>

EIA now expects U.S. natural gas prices to average above

In our November Short-Term Energy Outlook (STEO), we forecast that natural gas spot prices at the U.S. benchmark Henry Hub will average \$6.09 per million British thermal units (MMBtu) this winter (November 2022-March 2023), the highest real price since winter 2009-10. Our forecast reflects natural gas storage levels that are 4% below average heading into winter withdrawal season and more demand for liquefied natural gas (LNG) as the Freeport LNG facility comes back online. After the winter, we expect the Henry Hub price to decline in 2023 as production growth outpaces both domestic consumption and LNG exports. Henry Hub natural gas spot prices reached a peak of \$8.80/MMBtu in August. Prices declined to average \$5.66/MMBtu in October following a period of strong dry natural gas production a... For more info go to <https://bit.ly/3Ez9kWf>

Natural Gas Prices Spike As Cold Front Looms

The benchmark natural gas prices in Europe and the United States jumped on Monday as forecasts point to below-normal temperatures across most of America and a cold spell in northwest Europe this week. Europe's benchmark natural gas prices at the TTF hub in the Netherlands surged by 11% early on Monday, and returned above the threshold of \$103 (100 euros) per megawatt-hour (MWh), after having traded below that level for most of the past few weeks. The benchmark gas prices in Europe fell early this month to a four-month low and stayed below 100 euros per MWh as a warm October allowed for more injections into storage instead of withdrawals. The comfortable storage levels, the high rate of LNG imports, and the mild weather in October and early November eased concerns about gas supply and demand balances in the early p... For more info go to <https://bit.ly/3UFwDTF>

**Prompt Natural Gas (NG)
Daily Sentiment**

BEARISH



RESISTANCE
6.269 & 6.606
SUPPORT
5.743 & 5.554

NATURAL GAS

Futures	Close
NG	\$5.933
Volume	23,328
Open Int.	57,274

Contact Us



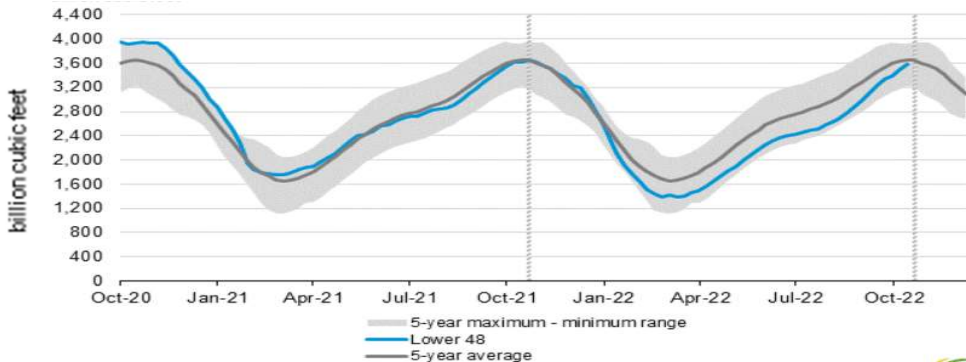
Mansfield Energy Corp
1025 Airport Pkwy
Gainesville, GA 30501
www.mansfield.energy

info@mansfieldoil.com
Phone: (800) 695 - 6626

NATURAL GAS NEWS



WEEKLY GAS IN UNDERGROUND STORAGE WITH 5-YR RANGE



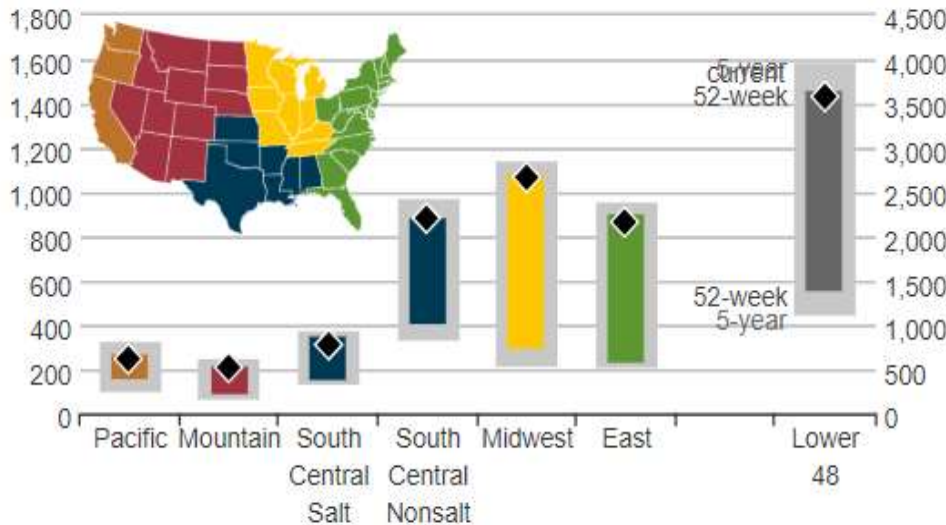
for week ending November 04, 2022 | Released: November 10, 2022 | Next Release: November 10, 2022

EIA Weekly Storage Actual and Surveys for November 4, 2022

Released November 10, 2022

Range	82 to 97
S&P Global	82
FX Street	84
Investing.com	97

UNDERGROUND WORKING NAT GAS STORAGE AS OF 10/28/2022



3580 BCF

- 79 BCF (LAST WEEK)
- 37 BCF (LAST YEAR)
- 76 BCF (5-YEAR AVG)

Total Working Gas In Storage

U.S. Natural Gas Supply

Gas Week -

Average Daily Values (BCF/D):

Last Year (BCF/d)

Dry Production -	97.2
Total Supply -	102.7

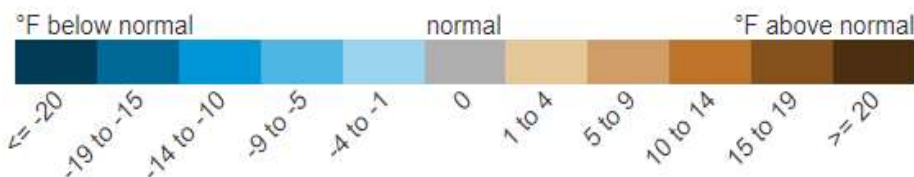
Last Week (BCF/d)

Dry Production -	100.5
Total Supply -	105.5

[Next Report: November 17]

REGIONAL AVG TEMPERATURES AND DEPARTURE FROM NORMAL

	Oct 28	Oct 29	Oct 30	Oct 31	Nov 01	Nov 02	Nov 03	Nov 04	Nov 05	Nov 06	Nov 07	Nov 08	Nov 09	Nov 10
East	53	54	54	56	60	61	59	60	64	68	67	56	51	57
Midwest	49	51	50	53	56	56	57	57	55	53	48	49	56	61
South Central	58	59	61	63	61	64	68	68	60	64	67	70	71	68
Mountain	46	47	48	50	51	50	42	36	41	43	44	47	46	36
Pacific	55	57	58	57	53	47	46	48	51	50	48	46	44	44
Lower 48	53	54	54	56	58	57	56	57	57	60	58	55	53	56



U.S. Natural Gas Demand

Gas Week -

Average Daily Values (BCF/D):

Last Year (BCF/d)

Power -	30.7
Total Demand -	102.5

Last Week (BCF/d)

Power -	29.1
Total Demand -	95.2

[Next Report: November 17]

MANSFIELDS' STORAGE FORECAST

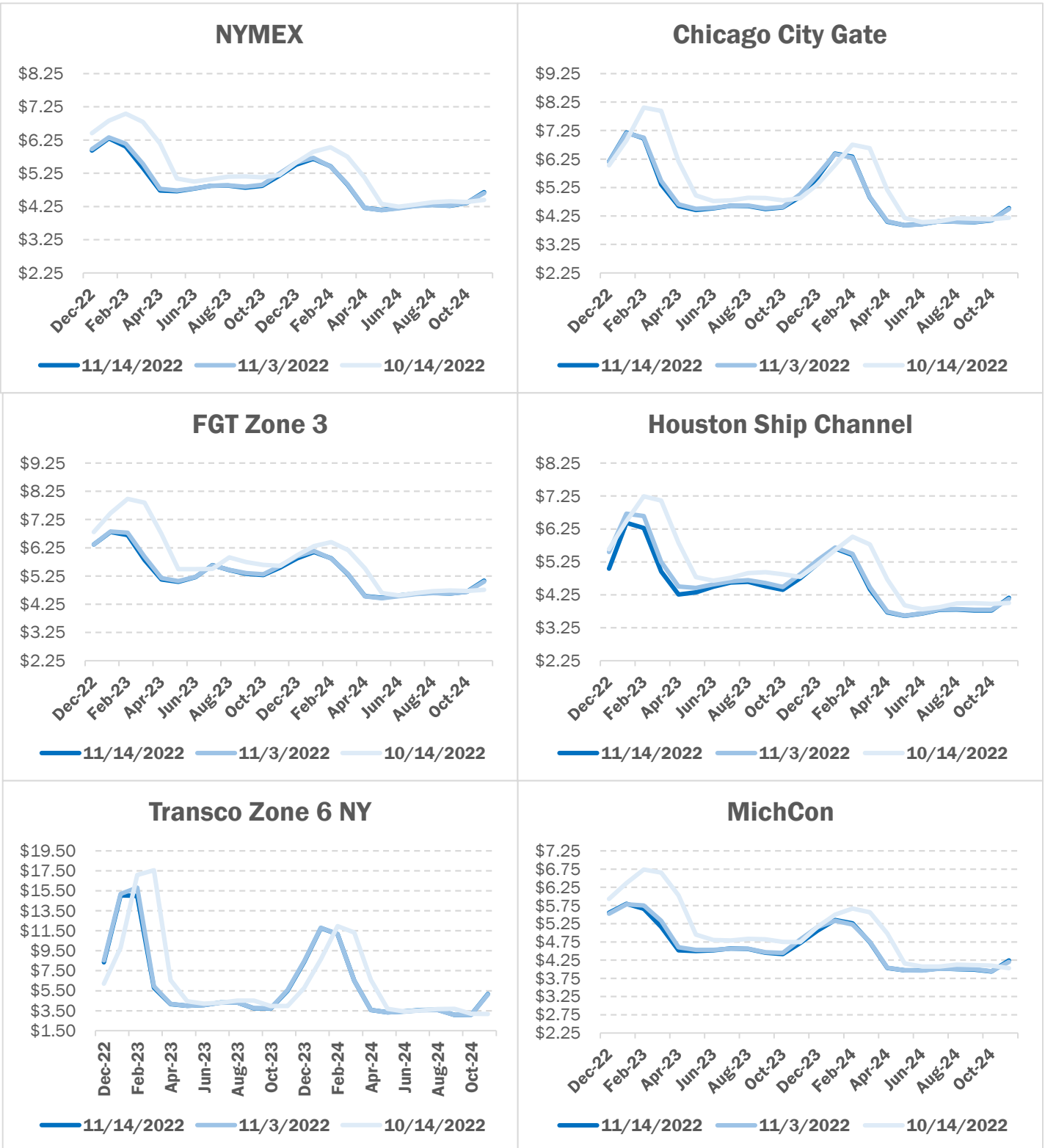
For week ending 11/11/2022

80

NATURAL GAS NEWS



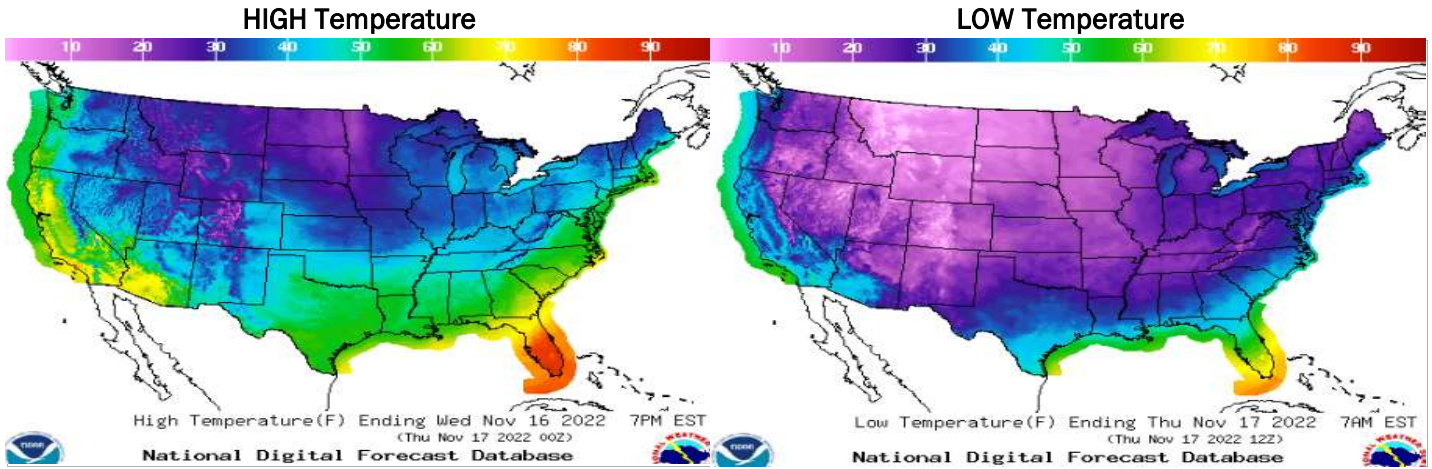
NATURAL GAS BASIS FUTURES



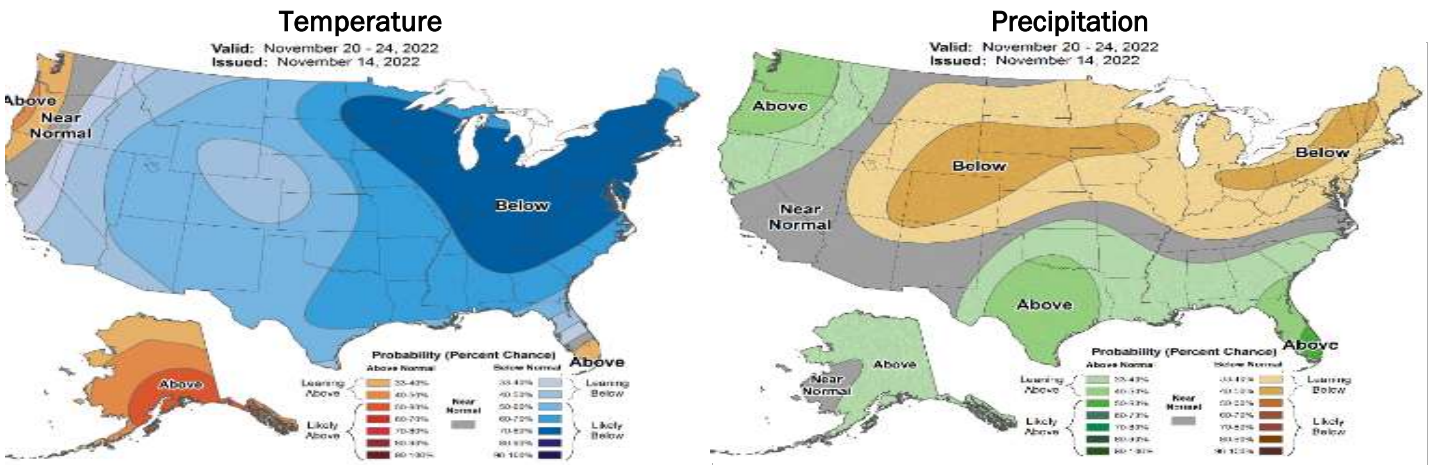
NATURAL GAS NEWS



WEATHER - HIGH / LOW TEMPERATURE - TOMORROW



WEATHER - 6 - 10 DAY OUTLOOK - NOAA



WEATHER - 8 - 14 DAY OUTLOOK - NOAA

