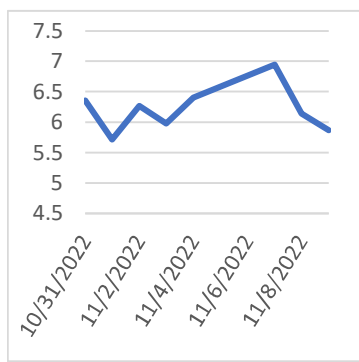


Thursday, November 10, 2022

Last Week's Prompt NYMEX



NYMEX NG Futures

Month	Close	Change
Dec-22	5.865	(0.273)
Jan-23	6.225	(0.299)
Feb-23	5.969	(0.297)
Mar-23	5.311	(0.195)
Apr-23	4.682	(0.091)
May-23	4.654	(0.076)
Jun-23	4.727	(0.078)
Jul-23	4.805	(0.079)
Aug-23	4.814	(0.079)
Sep-23	4.757	(0.077)
Oct-23	4.815	(0.074)
Nov-23	5.128	(0.071)
Dec-23	5.455	(0.074)
Jan-24	5.638	(0.072)
Feb-24	5.407	(0.069)
Mar-24	4.886	(0.063)
Apr-24	4.199	(0.036)
May-24	4.126	(0.035)
Jun-24	4.188	(0.037)
Jul-24	4.258	(0.038)
Aug-24	4.284	(0.040)
Sep-24	4.262	(0.042)
Oct-24	4.347	(0.034)
Nov-24	4.664	(0.037)
1 YR STRIP	5.146	(0.141)
2023	5.1118	(0.124)

IN THE NEWS

Energy Crisis Sparks Mad Dash For Floating LNG Terminals

Demand for LNG floating storage and regasification units (LNG-FSRUs) has increased sharply this year, with Europe facing an energy supply squeeze as Russia has progressively cut pipeline gas flows. Demand for LNG imports has intensified after the ruptures on the key Nord Stream pipeline system quashed any prospect of Russia turning its gas taps back on. This has forced dozens of countries in Europe to turn to FSRUs or floating LNG terminals, which are essentially mobile terminals that unload the super-chilled fuel and pipe it into onshore networks. Currently, there are 48 FSRUs in operation globally, with Rystad Energy revealing that all but six of them are locked into term charters. According to energy think-tank Ember, the EU has lined up plans for as many as 19 new FSRU projects at an estimated cost of €9.5bn... For more info go to <https://bit.ly/3fWZ9Bh>

Winter Is apt to bring higher natural gas prices, or not

When Old Man Winter bears down in coming months, Colorado Springs Utilities' customers might be surprised to see their natural gas rates either remain stable or decline from last year. That's because the city-owned utility passes fuel charges directly on to customers, and the natural gas market, while volatile, isn't showing signs that prices will go into orbit. After City Council, which also serves as the Utilities Board, adopted a higher gas cost adjustment (GCA) effective Oct. 1, the increase forced the gas portion of a typical residential bill up by only \$4 a month (5.7 percent) from its previous level. Because the Electric Cost Adjustment for fuel dipped by about 4.3 percent, the typical total monthly bill changed only slightly, going down from \$287.33 to \$287.01. Commercial and indus... For more info go to <https://bit.ly/3G01y8V>

The U.S. is facing a costly energy crunch this winter

Americans know that inflation has hit hard. Food prices alone are up 10% this year. And energy costs are now a key problem — thanks to OPEC and Russia manipulating oil prices even as natural gas prices surge. To put it bluntly, the news isn't good. Americans are going to face some very costly heating and electricity bills this winter. And New England may even experience blackouts. Let's start with energy prices. U.S. government data shows that the cost of electricity has climbed 15.5% since last year. That's the largest jump in 41 years. And at the same time, the price of natural gas has climbed an astonishing 33.1%. Why are natural gas prices rising so much? Heavy demand, plus a lack of alternatives. Europe is trying to wean itself from Russian natural gas —and gobbling up exports of America's liquefied natural g... For more info go to <https://bit.ly/3Gm1jFx>

Prompt Natural Gas (NG) Daily Sentiment

BEARISH



RESISTANCE
6.238 & 6.62

SUPPORT
5.603 & 5.342

NATURAL GAS

Futures	Close
NG	\$5.865
Volume	31,428
Open Int.	70,480

Contact Us



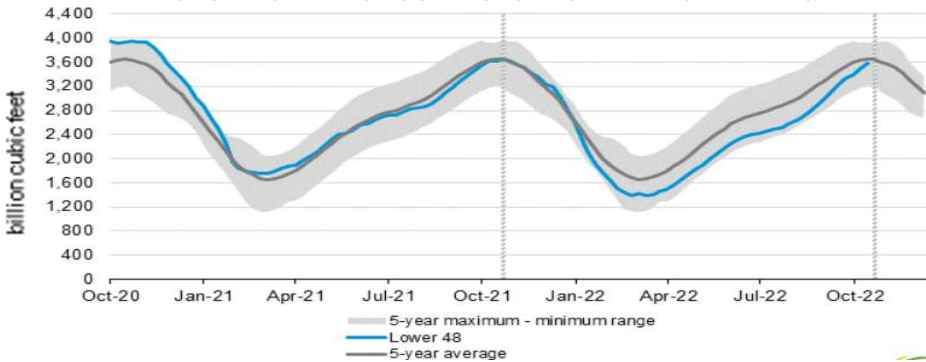
Mansfield Energy Corp
1025 Airport Pkwy
Gainesville, GA 30501
www.mansfield.energy

info@mansfieldoil.com
Phone: (800) 695 - 6626

NATURAL GAS NEWS



WEEKLY GAS IN UNDERGROUND STORAGE WITH 5-YR RANGE



for week ending November 04, 2022 | Released: November 10, 2022 | Next Release: November 10, 2022

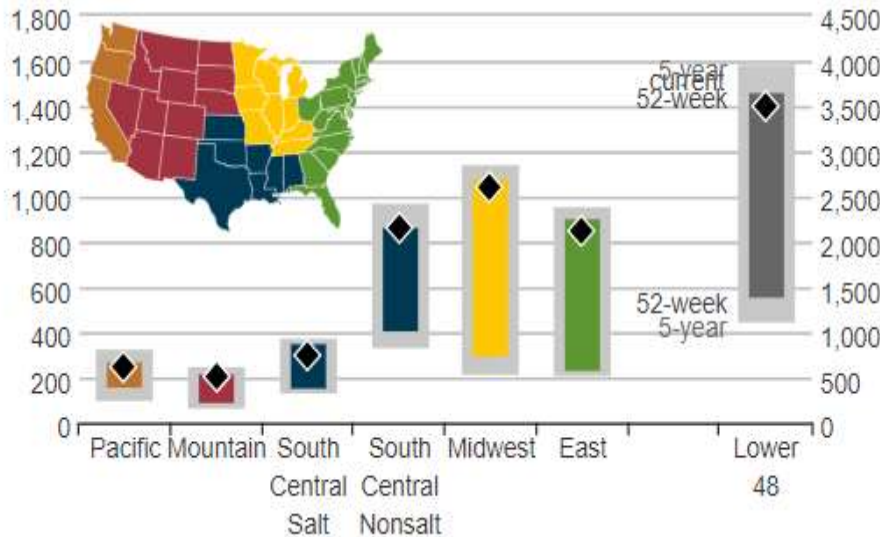
EIA Weekly Storage Actual and Surveys for

November 4, 2022

Released November 10, 2022

Range	82 to 97
S&P Global	66
FX Street	84
Investing.com	97

UNDERGROUND WORKING NAT GAS STORAGE AS OF 10/28/2022



Total Working Gas In Storage

3580 BCF

79 BCF (LAST WEEK)

-37 BCF (LAST YEAR)

-76 BCF (5-YEAR AVG)

U.S. Natural Gas Supply

Gas Week -

Average Daily Values (BCF/D):

Last Year (BCF/d)

Dry Production - 97.8

Total Supply - 103.3

Last Week (BCF/d)

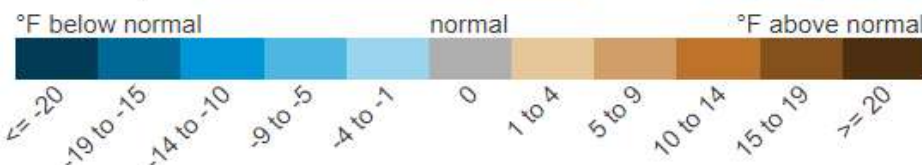
Dry Production - 99.1

Total Supply - 104.4

[Next Report: November 10]

REGIONAL AVG TEMPERATURES AND DEPARTURE FROM NORMAL

	Oct 21	Oct 22	Oct 23	Oct 24	Oct 25	Oct 26	Oct 27	Oct 28	Oct 29	Oct 30	Oct 31	Nov 01	Nov 02	Nov 03
East	51	55	56	58	61	62	58	53	54	54	60	64	61	59
Midwest	52	58	63	64	55	48	45	49	51	50	56	56	58	60
South Central	63	67	71	69	62	58	58	58	59	61	63	64	66	69
Mountain	58	56	51	43	44	45	44	46	47	48	51	54	52	44
Pacific	63	56	53	54	55	54	55	55	57	58	58	52	47	43
Lower 48	56	58	59	59	58	56	54	53	54	54	58	60	58	57



U.S. Natural Gas Demand

Gas Week -

Average Daily Values (BCF/D):

Last Year (BCF/d)

Power - 28.1

Total Demand - 92.5

Last Week (BCF/d)

Power - 29.3

Total Demand - 92.4

[Next Report: November 10]

MANSFIELDS' STORAGE FORECAST

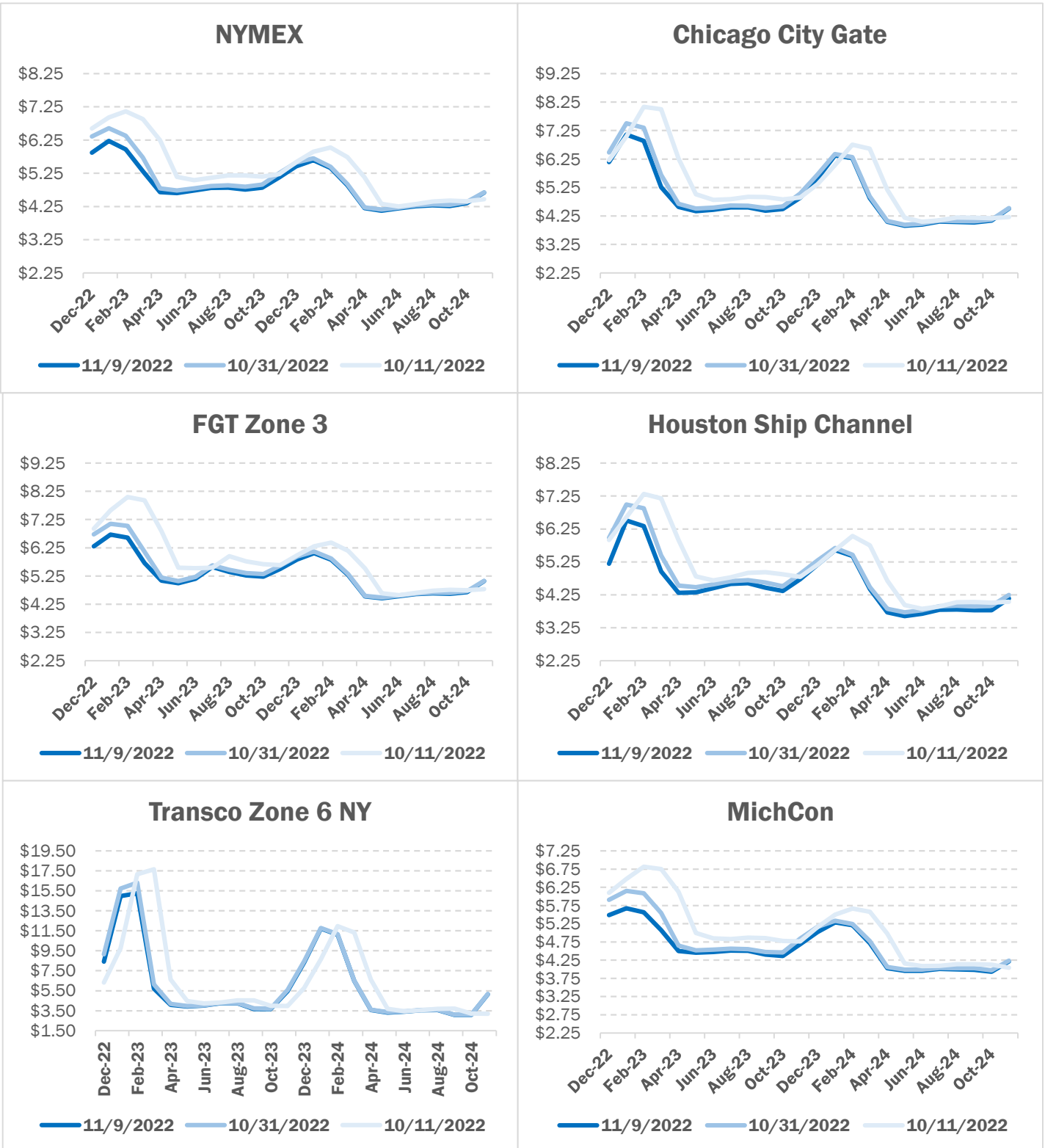
For week ending 11/11/2022

80

NATURAL GAS NEWS



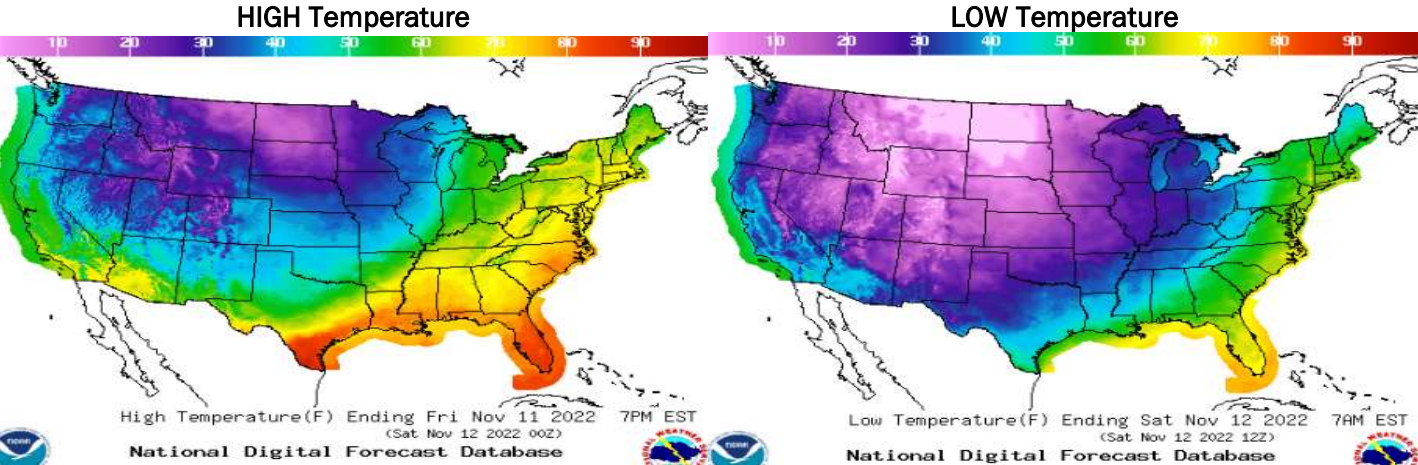
NATURAL GAS BASIS FUTURES



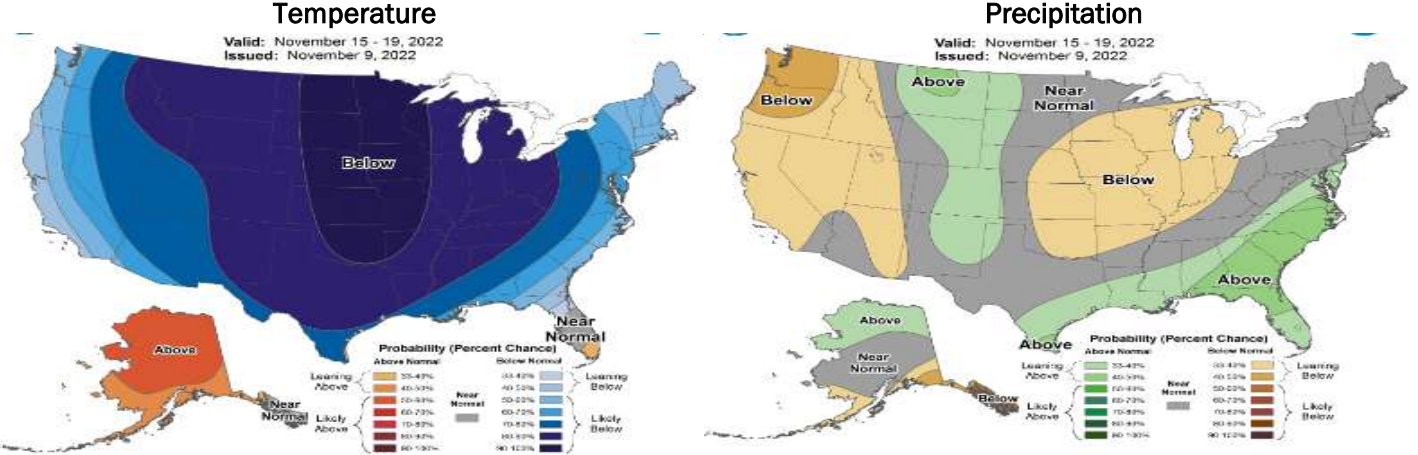
NATURAL GAS NEWS



WEATHER - HIGH / LOW TEMPERATURE - TOMORROW



WEATHER - 6 - 10 DAY OUTLOOK - NOAA



WEATHER - 8 - 14 DAY OUTLOOK - NOAA

