

NATURAL GAS



SEPTEMBER 07, 2018

Prior Day's NYMEX Sep-18 Contract (CT)



NYMEX NG Futures

Month	Close	Change
Oct-18	2.772	(0.023)
Nov-18	2.791	(0.022)
Dec-18	2.885	(0.022)
Jan-19	2.974	(0.021)
Feb-19	2.945	(0.019)
Mar-19	2.845	(0.017)
Apr-19	2.585	(0.018)
May-19	2.559	(0.017)
Jun-19	2.588	(0.018)
Jul-19	2.618	(0.019)
Aug-19	2.622	(0.019)
Sep-19	2.604	(0.019)
Oct-19	2.621	(0.019)
Nov-19	2.669	(0.018)
Dec-19	2.792	(0.018)
Jan-20	2.887	(0.018)
Feb-20	2.848	(0.018)
Mar-20	2.745	(0.018)
Apr-20	2.485	(0.010)
May-20	2.454	(0.009)
Jun-20	2.480	(0.009)
Jul-20	2.509	(0.009)
Aug-20	2.515	(0.009)
Sep-20	2.499	(0.009)
1YR Strip	2.732	(0.020)
2018	2.816	(0.022)
5YR Strip	2.611	(0.003)

IN THE NEWS

US natural gas storage volume rises 63 Bcf to 2.568 Tcf: EIA— SP Global reported: US natural gas in storage increased by 63 Bcf to 2.568 Tcf for the week ended August 31, Energy Information Administration data showed Thursday. The build was slightly more than an S&P Global Platts' survey of analysts calling for a 60-Bcf addition. The injection was more than the 60-Bcf

- **US natural gas storage volume rises 63 Bcf to 2.568 Tcf: EIA**
- **Russia's Huge Natural Gas Pipeline To China Nearly Complete**

build reported during the corresponding week in 2017 but less than the five-year average addition of 65 Bcf, according to EIA data. As a result, stocks were 643 Bcf, or 20%, less than the year-ago level of 3.211 Tcf, and 590 Bcf, or 19%, less than the five-year average of 3.158 Tcf. The injection was less than the 70-Bcf build reported the week prior as population-weighted temperatures increased by 2 degrees across the Lower 48 states, adding 9 Bcf of additional gas-fired power demand, according to S&P Global Platts Analytics. For more on this story visit [spglobal.com](https://bit.ly/2wQyNHq) or click <https://bit.ly/2wQyNHq>

Russia's Huge Natural Gas Pipeline To China Nearly Complete— Oil Price reports: Gazprom's Power of Siberia natural gas pipeline from Russia to China is 93 percent complete, the Russian gas giant said in an update on its major projects. A total of 2,010 kilometers (1,249 miles) of pipes are laid for the Power of Siberia gas pipeline between Yakutia and the Russian-Chinese border, or on 93 percent of the route's length, Gazprom said in a statement. The natural gas pipeline is expected to start sending gas to China at the end of 2019 and its completion is among Gazprom's top priorities. The two-string submerged crossing of the Power of Siberia pipeline under the Amur River is 78 percent complete, and the Atamanskaya compressor station adjacent to the border is also under construction, the Russian company says. Gazprom has a 30-year contract with CNPC for the supply of an annual 1.3 trillion cu ft of natural gas via the infrastructure. For more on this story visit [oilprice.com](https://bit.ly/2Q998Sd) or click <https://bit.ly/2Q998Sd>

12 MONTH CANDLESTICK (WEEKLY)



Prompt Natural Gas (NG) Daily Sentiment

BEARISH



RESISTANCE

2.79 & 2.81

SUPPORT

2.76 & 2.75

Trading Summary

NATURAL GAS

Futures	Close	Change
NG	2.772	(0.023)
Volume	388,716	(332,026)
Open Int.	1,653,350	4,949

CRUDE AND GASOLINE

Futures	Close	Change
Crude	67.77	(0.95)
RBOB	1.9510	(0.0138)
Crude/NG	24.45	(0.14)

METALS

Futures	Close	Change
Gold	1,197.90	(3.10)

EQUITIES

Exchange	Close	Change
DOW	25,995.87	20.88
S&P 500	-2,063.11	(10.55)

CURRENCY

Currency	Close	Change
EUR/USD	1.1573	(0.0050)
USD/CND	1.2405	0.0027

Contact Us



Mansfield Energy Corp
1025 Airport Pkwy
Gainesville, GA 30501
www.mansfield.energy
info@mansfieldoil.com

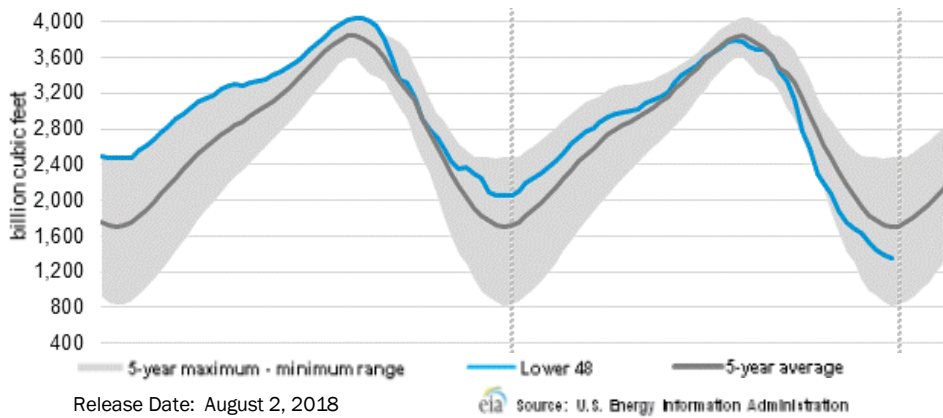
Phone: (800) 695-6626





NATURAL GAS NEWS

WEEKLY GAS IN UNDERGROUND STORAGE WITH 5-YR RANGE



Rig Count

Report Date: August 31, 2018

	Total	Change
US -	1,048	+4
CN -	228	(1)

EIA Weekly NG Storage Actual and Surveys for August 31, 2018

Released August 30, 2018
 Range — +33 to +62
 PIRA— +64
 CITI — +61
 Reuters — +68

EIA ACTUAL — +63

Total Working Gas In Storage

2,568 BCF

+63 BCF (LAST WEEK)
 (643) BCF (LAST YEAR)
 (590) BCF (5-YR AVG)

U.S. Natural Gas Supply Gas Week 8/30 — 9/5

Average daily values (BCF/D):
 Last Year (BCF/d)
 Dry Production — +71.7
 Total Supply — +77.4
 Last Week (BCF/d)
 Dry Production — +82.7
 Total Supply — +88.2

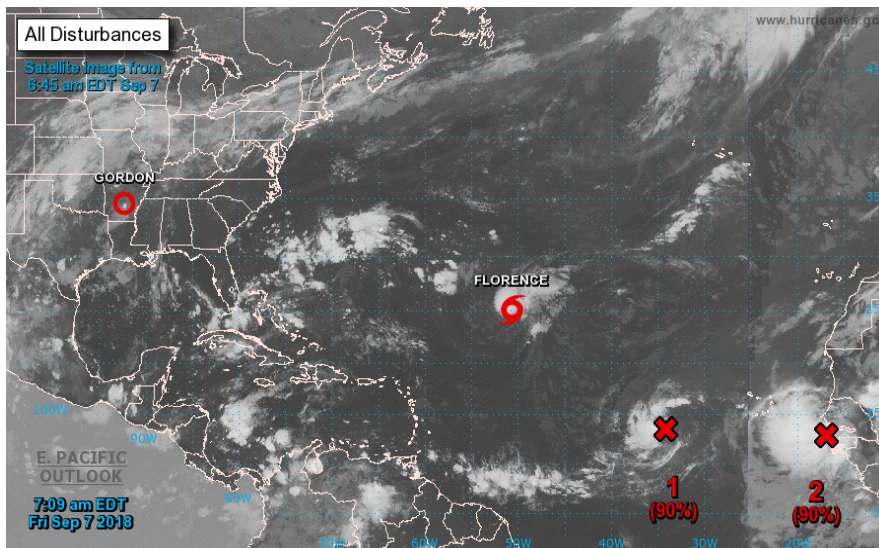
[NEXT REPORT ON Sept 14]

U.S. Natural Gas Demand Gas Week 8/30 — 9/5

Average daily values (BCF/D):
 Last Year (BCF/d)
 Power — +29.4
 Total Demand — +69.1
 Last Week (BCF/d)
 Power — +35.0
 Total Demand — +76.7

[NEXT REPORT ON Sept 14]

TROPICAL STORM ACTIVITY— ATLANTIC



Tropical Weather Outlook
 NWS National Hurricane Center Miami FL
 800 AM EDT Fri Sep 7 2018

For the North Atlantic...Caribbean Sea and the Gulf of Mexico:

The National Hurricane Center is issuing advisories on Hurricane

Florence, located over the central Atlantic Ocean. The Weather

Prediction Center is issuing advisories on Tropical Depression

Gordon, located over Arkansas.

system located about 650 miles west of the Cabo Verde Islands is

gradually becoming better defined. In addition, the associated

showers and thunderstorms remain fairly concentrated near the

center. This system is expected to become a tropical depression

later today or tonight while it moves slowly westward across the

tropical Atlantic Ocean.
 * Formation chance through 48 hours...high...90 percent.

* Formation chance through 5 days...high...90 percent.

2. Showers and thunderstorms continue to become better organized in

association with a low pressure system located just off the west

coast of Africa. Environmental conditions are conducive for

development, and a tropical depression or tropical storm is expected

to form later today or tonight while the low moves westward or

west-northwestward over the far eastern tropical Atlantic Ocean.

Interests in the Cabo Verde Islands should monitor the progress of this system.

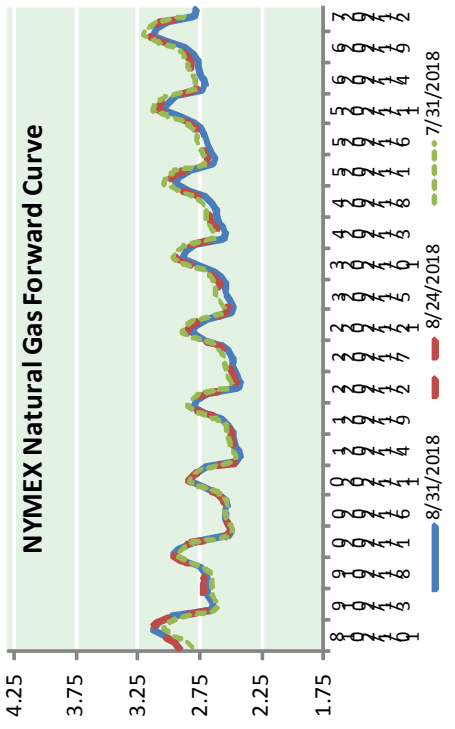
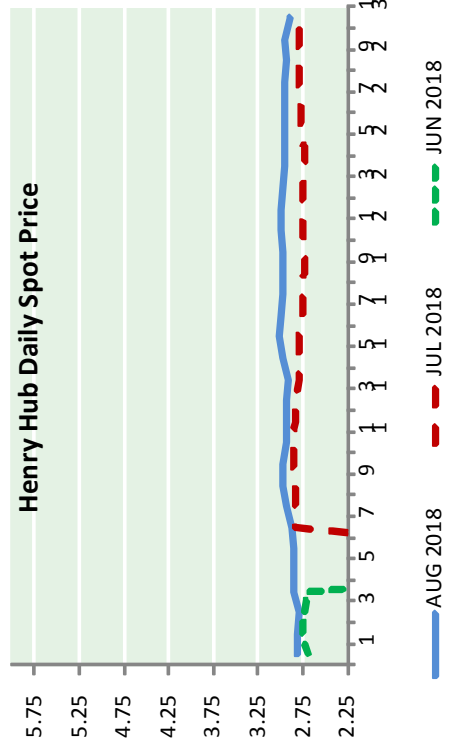
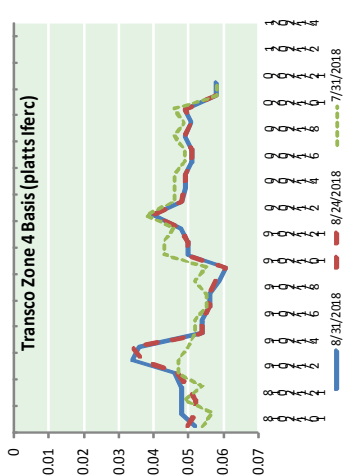
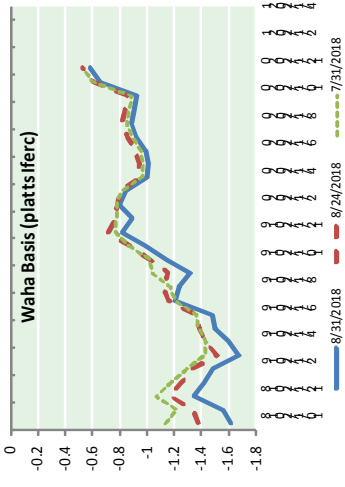
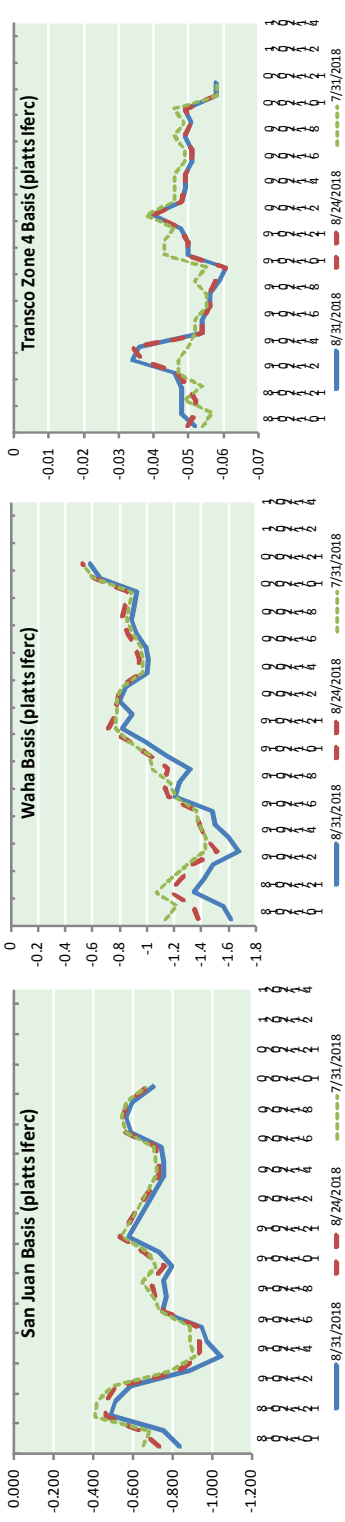
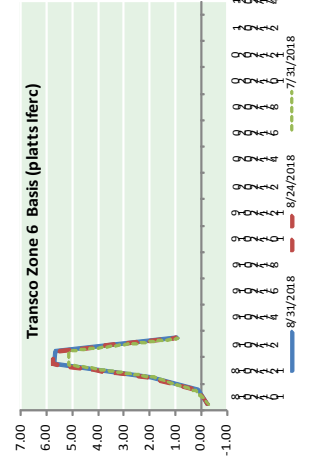
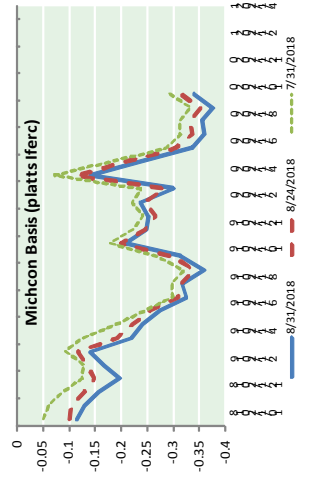
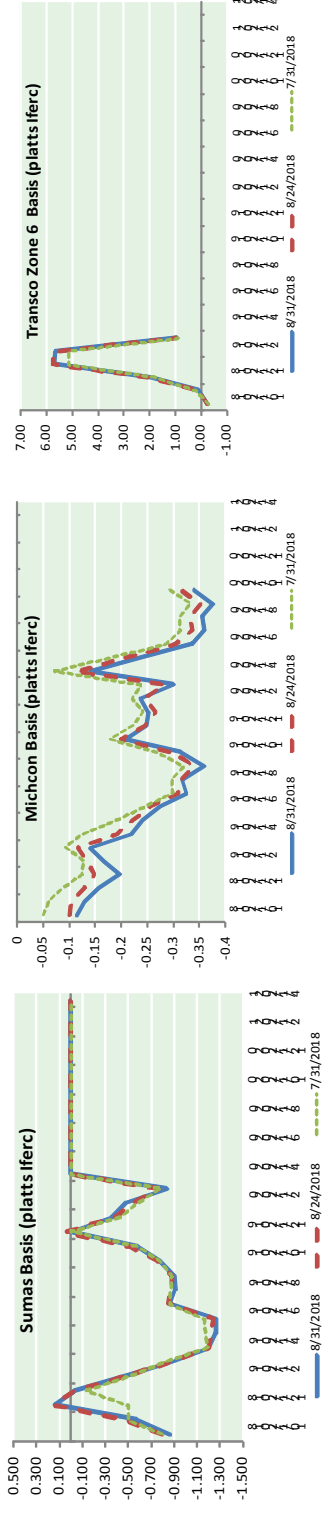
* Formation chance through 48 hours...high...90 percent.

* Formation chance through 5 days...high...90 percent

1. Satellite images indicate that the circulation of a low pressure

NATURAL GAS NEWS

NATURAL GAS BASIS FUTURES, HENRY HUB SPOT PRICES, AND FORWARD CURVE



NYMEX WTI Delivery

Month Average (\$/bbl)
(Excluding Weekends and Holidays)

Month: September 2018

Day	Price	Day	Price
1	16	16	
2	17	17	
3		18	
4	69.87	19	
5	68.72	20	
6	67.77	21	
7		22	
8		23	
9		24	
10		25	
11		26	
12		27	
13		28	
14		29	
15		30	

Average (Sep) 68.7867
(through 09/06/2018)
Average (Aug) 67.8452
Average (Jul) 70.5819

CME NG Option Prices

ATM Call

Month	Strike	Close	Imp Vol
Nov-18			
Dec-18	2.800	0.085	22.5
Jan-19			
Feb-19			
Mar-19			

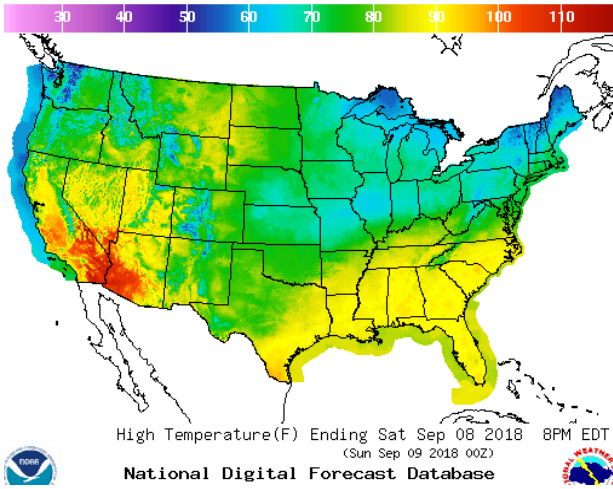
CME NG Option Prices

ATM Put

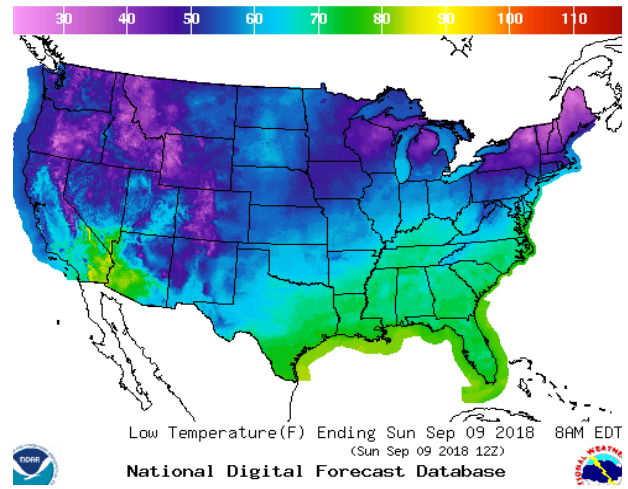
Nov-18			
Dec-18	2.800	0.101	22.5
Jan-19			
Feb-19			
Mar-19			

WEATHER – HIGH / LOW TEMPERATURE SATURDAY

HIGH Temperature

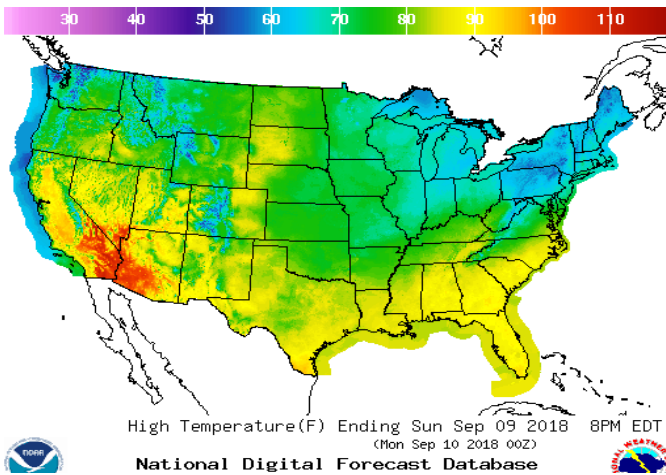


LOW Temperature

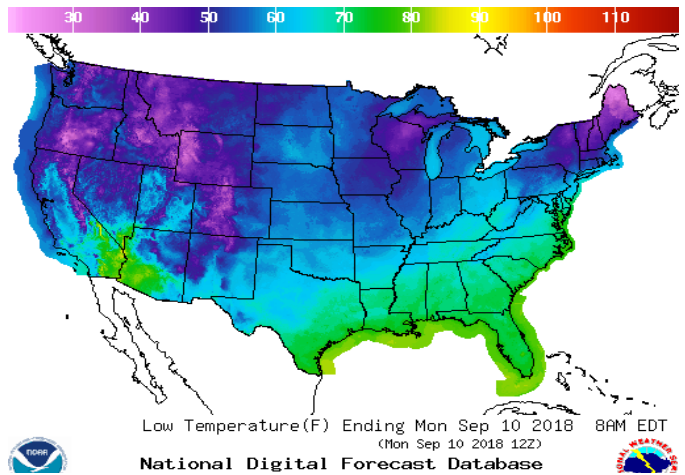


WEATHER – HIGH / LOW TEMPERATURE SUNDAY

Temperature

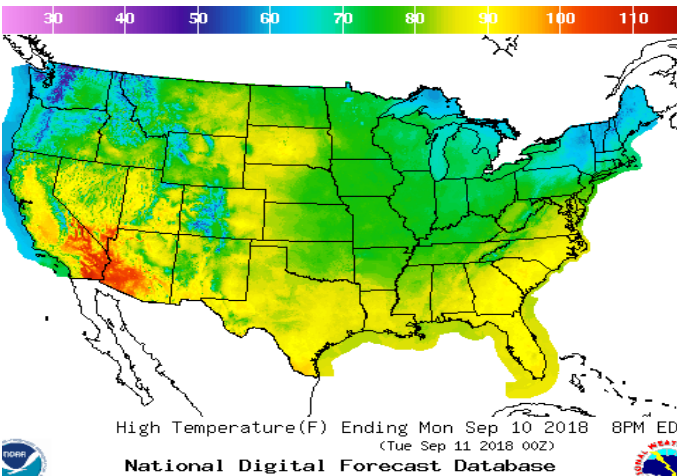


Precipitation

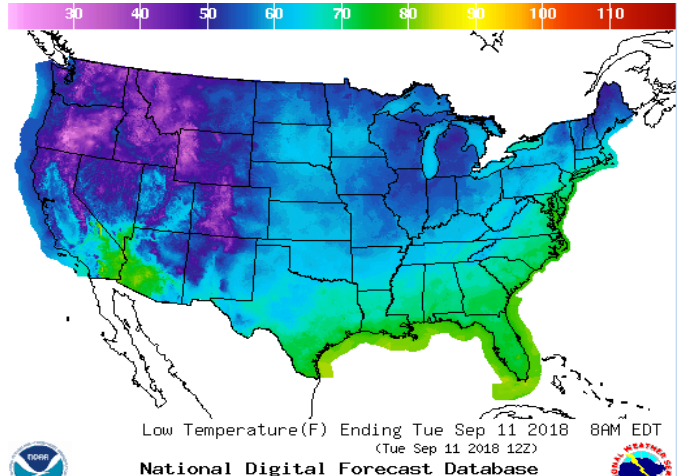


WEATHER – HIGH / LOW TEMPERATURE MONDAY

Temperature

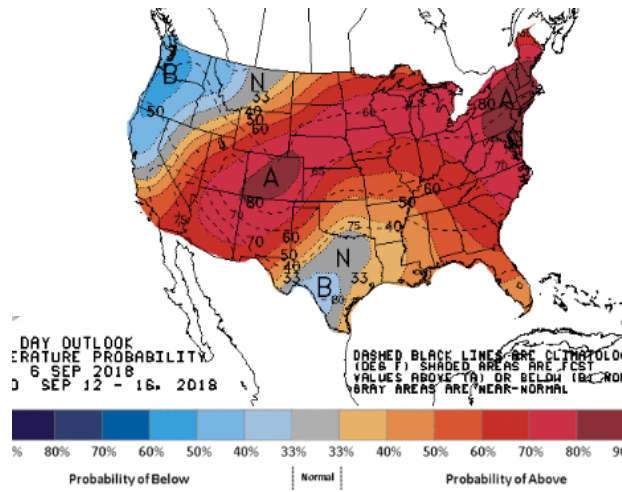


Precipitation

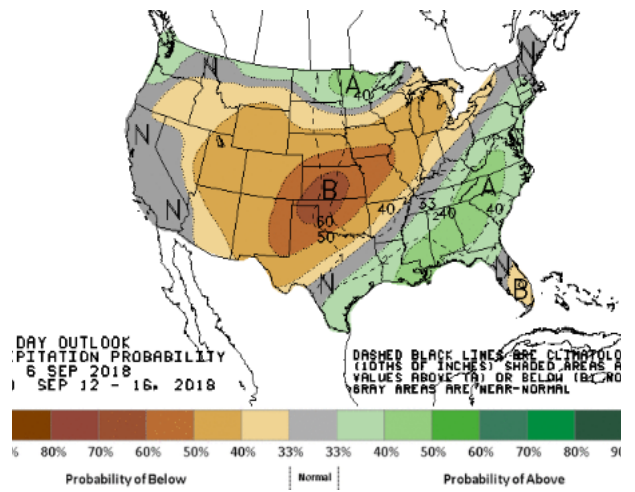


WEATHER — 6 TO 10 DAY OUTLOOK — NOAA

HIGH Temperature

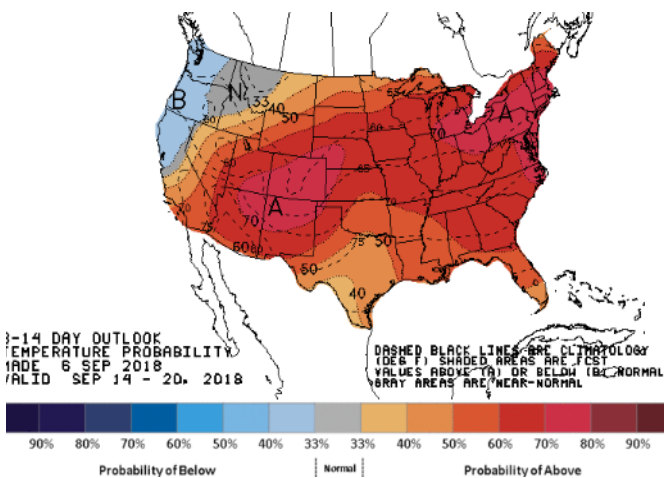


LOW Temperature

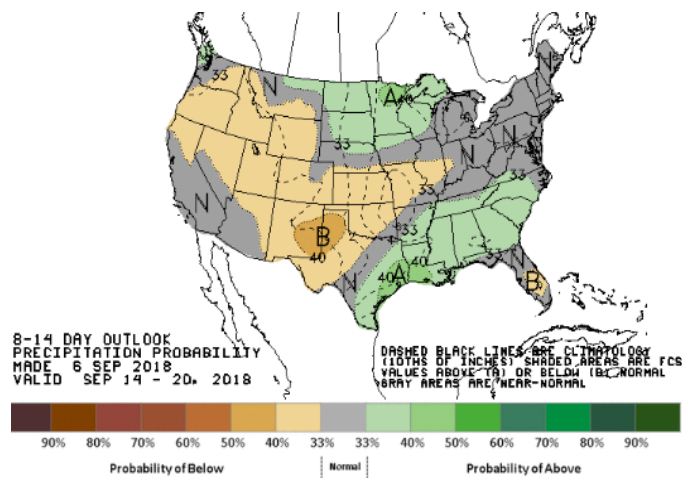


WEATHER — 8 TO 14 DAY OUTLOOK — NOAA

Temperature

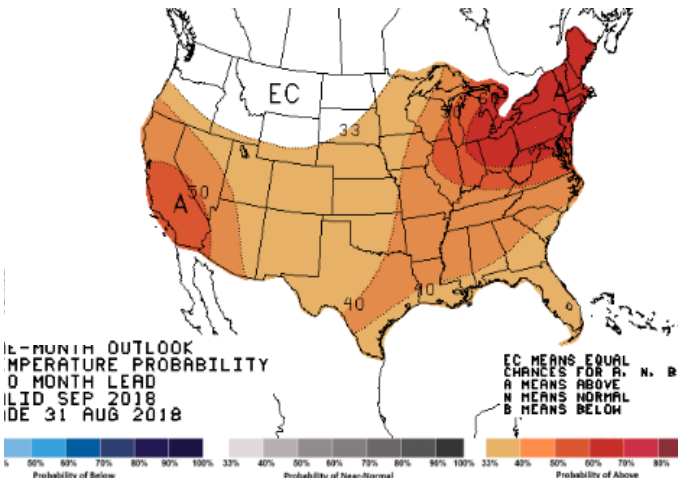


Precipitation

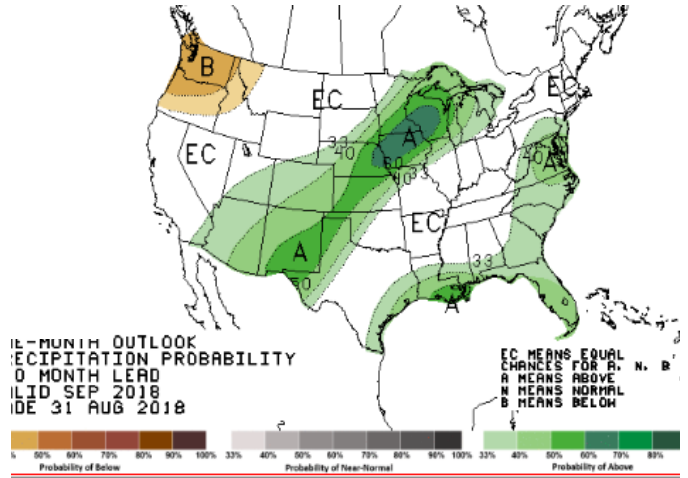


WEATHER — 30 DAY OUTLOOK — NOAA

Temperature



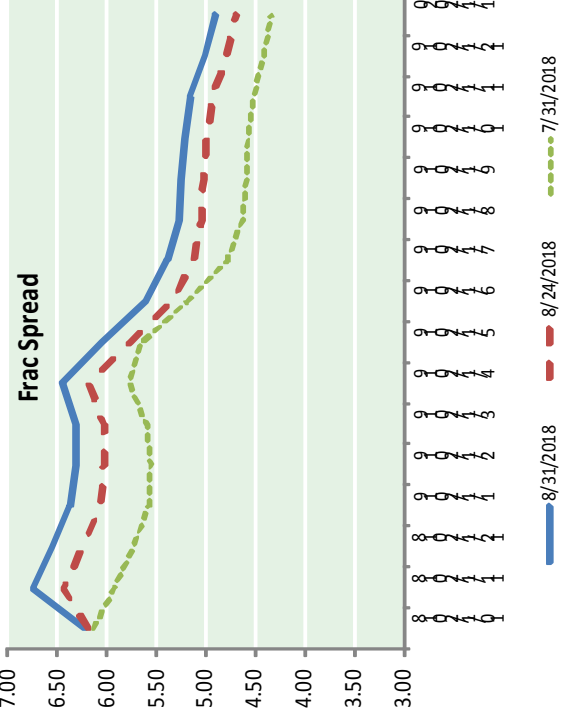
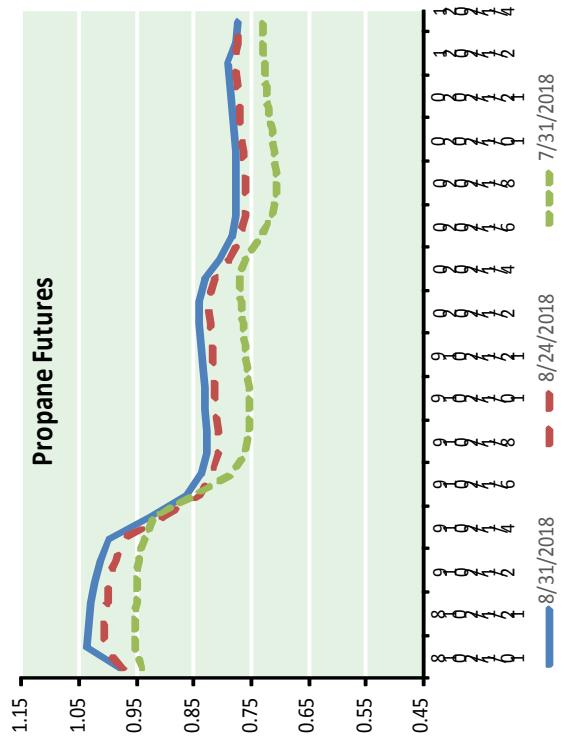
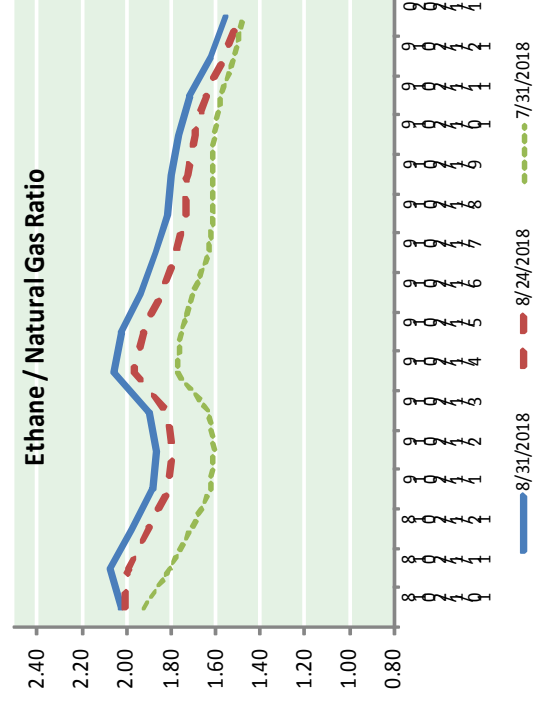
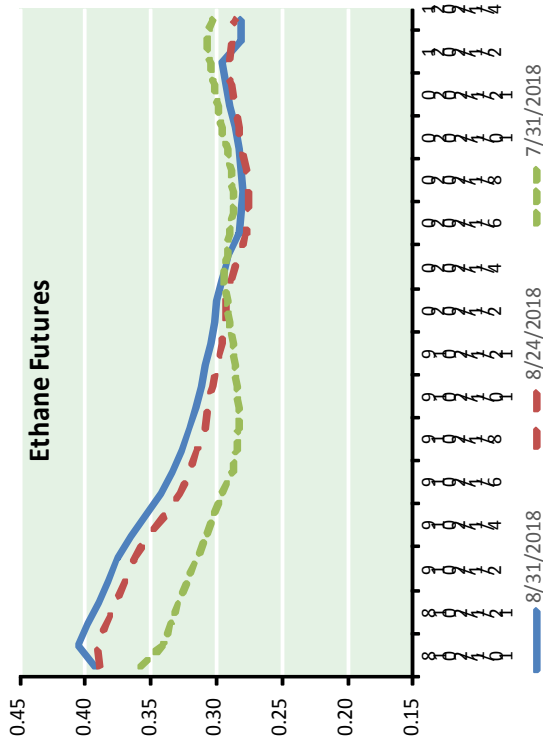
Precipitation





NATURAL GAS NEWS

ETHANE FUTURES, NG/ETHANE RATIO, PROPANE FUTURES, AND THE FRAC AC SPREAD



CME Future Prices

Month	Close	Change
Oct-18	0.392	(0.000)
Nov-18	0.405	(0.001)
Dec-18	0.398	0.001
Jan-19	0.390	0.002
Feb-19	0.382	0.003
Mar-19	0.374	0.003
Apr-19	0.364	0.003
May-19	0.353	0.003
Jun-19	0.342	0.003
Jul-19	0.333	0.003
Aug-19	0.325	0.002
Sep-19	0.320	0.003
1YR Strip	0.365	0.002

CME Future Prices

Month	Close	Change
Oct-18	0.975	(0.000)
Nov-18	1.036	(0.003)
Dec-18	1.033	(0.004)
Jan-19	1.030	(0.004)
Feb-19	1.023	(0.005)
Mar-19	1.014	(0.004)
Apr-19	0.998	(0.005)
May-19	0.927	(0.004)
Jun-19	0.863	(0.005)
Jul-19	0.839	(0.004)
Aug-19	0.829	(0.005)
Sep-19	0.828	(0.005)
1YR Strip	0.949	(0.004)

NATURAL GAS NEWS



Prompt WTI (CL) Crude

Daily Sentiment

NEUTRAL



RESISTANCE

68.86 & 69.95

SUPPORT

66.84 & 65.91

FOLLOW US ON TWITTER:



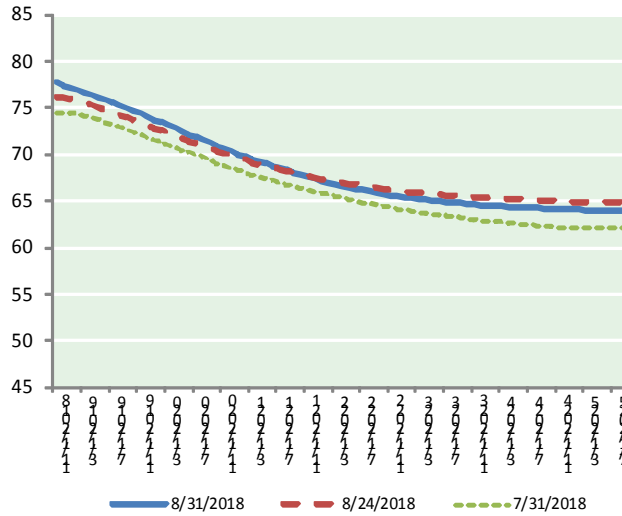
@MPG_NatGasNews

NYMEX Brent (BZ)

Futures

Month	Close	Change
Oct-18	67.77	(0.95)
Nov-18	67.52	(0.90)
Dec-18	67.30	(0.87)
Jan-19	67.07	(0.87)
Feb-19	66.81	(0.86)
Mar-19	66.58	(0.84)
Apr-19	66.34	(0.83)
May-19	66.12	(0.81)
Jun-19	65.87	(0.80)
Jul-19	65.59	(0.79)
Aug-19	65.32	(0.75)
Sep-19	65.04	(0.74)
Oct-19	64.78	(0.72)
Nov-19	64.52	(0.71)
Dec-19	64.28	(0.68)
Jan-20	63.97	(0.66)
Feb-20	63.67	(0.64)
Mar-20	63.36	(0.63)
Apr-20	63.08	(0.61)
May-20	62.83	(0.58)
Jun-20	62.58	(0.55)
Jul-20	62.28	(0.54)
Aug-20	62.01	(0.53)
Sep-20	61.72	(0.53)
1YR Strip 2018	66.44	(0.83)
2018	67.53	(0.91)
5YR Strip	60.64	(0.57)

BRENT CRUDE FORWARD CURVE



FRAC Spread

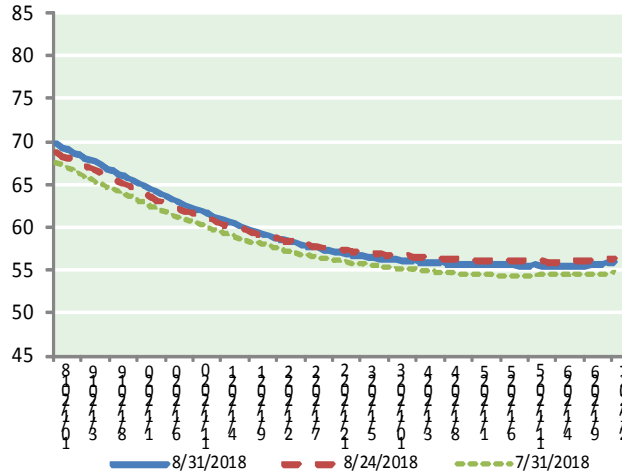
Specifications

Ethane	: 42%	66,500 btu/g
Propane	: 28%	90,830 btu/g
Butane	: 11%	102,916 btu/g
Iso-Butane	: 6%	98,935 btu/g
Natural Gasoline	: 13%	115,021 btu/g

Prompt NGL Futures

	Oct-18	Close	Change
Butane	1.150	(0.000)	
Iso-Butane	1.157	0.002	
Nat Gasoline	1.521	(0.000)	

WTI CRUDE FORWARD CURVE



NYMEX WTI (CL) Futures

Month	Close	Change
Nov-18	76.50	(0.77)
Dec-18	76.15	(0.75)
Jan-19	75.83	(0.74)
Feb-19	75.59	(0.72)
Mar-19	75.36	(0.70)
Apr-19	75.14	(0.69)
May-19	74.92	(0.69)
Jun-19	74.68	(0.68)
Jul-19	74.43	(0.67)
Aug-19	74.15	(0.67)
Sep-19	73.86	(0.66)
Oct-19	73.56	(0.65)
Nov-19	73.27	(0.64)
Dec-19	72.94	(0.64)
Jan-20	72.65	(0.63)
Feb-20	72.36	(0.62)
Mar-20	72.06	(0.61)
Apr-20	71.75	(0.61)
May-20	71.46	(0.61)
Jun-20	71.17	(0.60)
Jul-20	70.86	(0.60)
Aug-20	70.57	(0.59)
Sep-20	70.28	(0.58)
Oct-20	69.99	(0.57)
1YR Strip 2018	75.01	(0.70)
2018	76.33	(0.76)
5YR Strip	68.95	(0.55)

WTI-BRENT SPREAD

