

# NATURAL GAS



SEPTEMBER 7, 2017

## Prior Day's NYMEX Oct-17 Contract (CT)



## NYMEX NG Futures

Month	Close	Change
Oct-17	3.000	0.028
Nov-17	3.069	0.025
Dec-17	3.216	0.027
Jan-18	3.315	0.028
Feb-18	3.313	0.028
Mar-18	3.268	0.024
Apr-18	2.925	0.014
May-18	2.889	0.014
Jun-18	2.915	0.014
Jul-18	2.940	0.013
Aug-18	2.943	0.012
Sep-18	2.919	0.012
Oct-18	2.938	0.012
Nov-18	2.986	0.011
Dec-18	3.113	0.011
Jan-19	3.195	0.011
Feb-19	3.169	0.011
Mar-19	3.104	0.010
Apr-19	2.734	0.005
May-19	2.702	0.005
Jun-19	2.724	0.005
Jul-19	2.745	0.005
Aug-19	2.749	0.005
Sep-19	2.733	0.005
1YR Strip	3.059	0.020
2017	3.095	0.027
5YR Strip	2.856	0.004

## IN THE NEWS

Florida NatGas, Power Utilities Prep for Potential Category 5 Irma Landfall; BP Evacuates in GOM — Natural Gas Intelligence reports: Hurricane Irma, a catastrophic Category 5 storm that was barreling through the Caribbean on Wednesday, is likely to have some impact on natural gas markets if it strikes the United

- **Florida NatGas, Power Utilities Prep for Potential Category 5 Irma Landfall; BP Evacuates in GOM**
- **U.S. natural gas bounces back as traders monitor Irma, other storms**

States, which forecasters were anticipating. However, with miniscule energy infrastructure compared to the Texas and Louisiana coast, and hurricane-savvy utilities that should be able to restart power at a fairly brisk pace, the impact to gas markets should be minimal, according to Natgasweather.com. Forecasters said Wednesday Irma's damage is likely to be extensive, "but to the natural gas markets, they've tended to have a bearish stance with the storm due to any potential production being lost more than offset by cooler temperatures and power outages." For more on this story visit [naturalgasintel.com](http://bit.ly/2eO7RSE) or click the following link <http://bit.ly/2eO7RSE>

U.S. natural gas bounces back as traders monitor Irma, other storms - Investing.com reports: U.S. natural gas futures edged higher on Wednesday, recouping some of the prior session's more than 3% decline as "potentially catastrophic" Hurricane Irma headed for American shores. Another Tropical Storm, Jose, is gathering strength in the Atlantic and may shape up as another hurricane. The weather threats come after Hurricane Harvey caused flooding and devastation in Texas less than two weeks ago, forcing the closure of several refineries and pipelines. Energy traders track tropical weather in the event it disrupts production in the Gulf of Mexico. Early market expectations for this week's storage data due on Thursday is for a build in a range between 58 and 67 billion cubic feet in the week ended September 1. For more visit [investing.com](http://bit.ly/2eJsriC) or click <http://bit.ly/2eJsriC>

## 12 MONTH CANDLESTICK (WEEKLY)



## Prompt Natural Gas (NG) Daily Sentiment

**BULLISH**



RESISTANCE  
3.03 & 3.07  
SUPPORT  
2.93 & 2.88

## Trading Summary

### NATURAL GAS

Futures	Close	Change
NG	3.000	0.028
Volume	333,044	(319,020)
Open Int.	1,305,722	8,380

### CRUDE AND GASOLINE

Futures	Close	Change
Crude	49.16	0.50
RBOB	1.6733	(0.0258)
Crude/NG	16.39	0.01

### METALS

Futures	Close	Change
Gold	1,335.20	4.80

### EQUITIES

Exchange	Close	Change
DOW	21,807.64	54.33
S&P 500	2,465.54	7.69

### CURRENCY

Currency	Close	Change
EUR/USD		
USD/CND	1.2188	(0.0044)

## Contact Us



**Mansfield Energy Corp**  
1025 Airport Pkwy  
Gainesville, GA 30501  
  
www.mansfield.energy  
info@mansfieldoil.com

Phone: (800) 695-6626

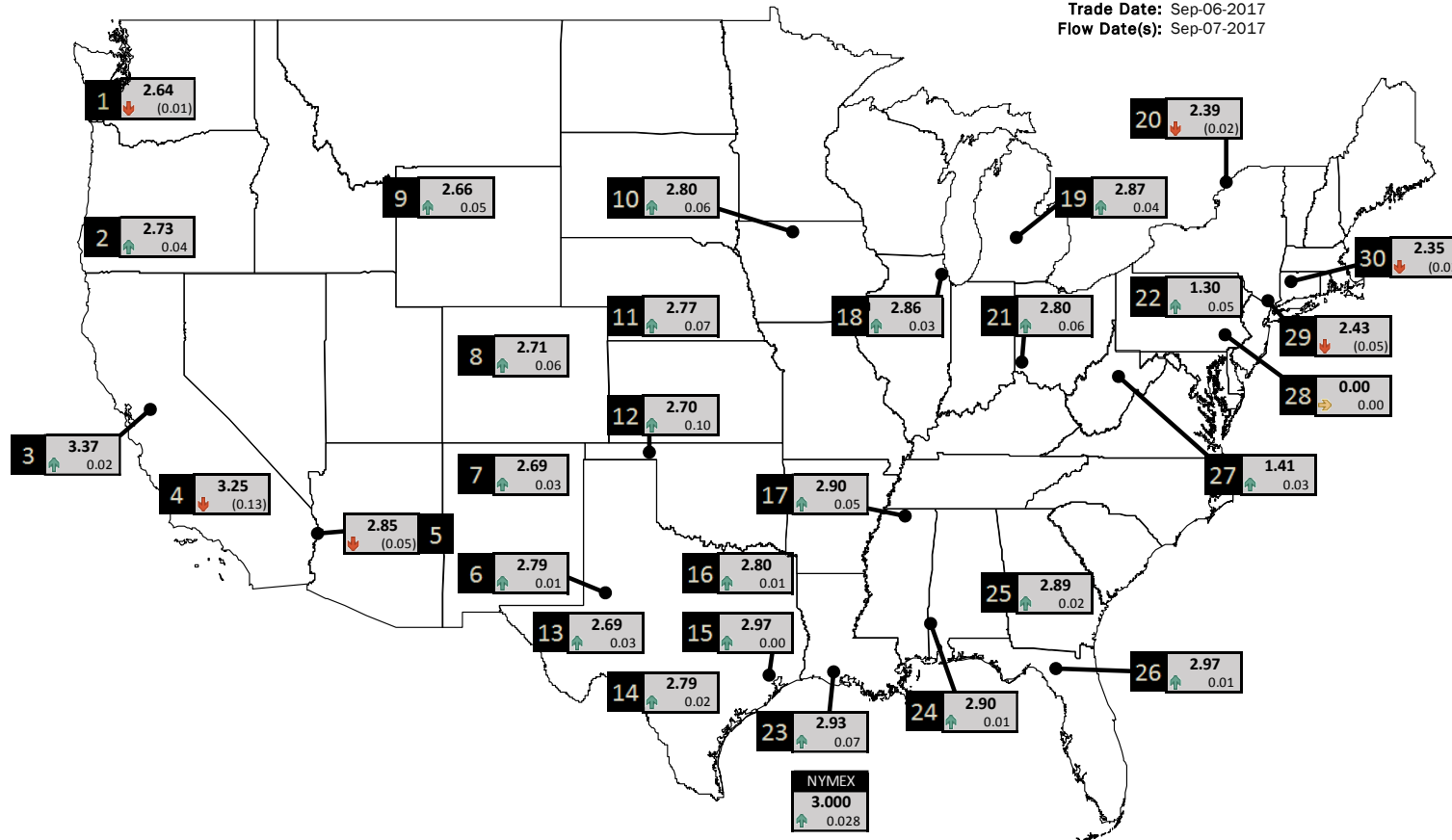




NATURAL GAS NEWS

PHYSICAL SPOT NATURAL GAS PRICE MAP

Trade Date: Sep-06-2017  
Flow Date(s): Sep-07-2017



DISCLAIMER: The content herein is privileged and confidential. Content is presented for informational purposes and is a reflection of the market opinions of its authors subject to change without notice. Content is derived from sources believed to be accurate at the time of release but carries no guarantee of accuracy or completeness. Mansfield Energy Corp and its clients may or may not take positions similar or opposite those discussed herein. The reader should realize that the trading of commodities involves risk, and the reader assumes all responsibility for the risk of financial losses.



ID	DAILY INDEX	PRICE	CHANGE
1	Stanfield	2.64	(0.01)
2	Malin	2.73	0.04
3	PG&E - Citygate	3.37	0.02
4	Socal-Citygate	3.25	(0.13)
5	SoCal Border	2.85	(0.05)
6	Waha	2.79	0.01
7	EPSJ Blanco Pool	2.69	0.03
8	Opal Plant Tailgate	2.71	0.06
9	NWP-Wyoming	2.66	0.05
10	Ventura	2.80	0.06

ID	DAILY INDEX	PRICE	CHANGE
11	NGPL-Midcont Pool	2.77	0.07
12	Panhandle	2.70	0.10
13	EP-Permian	2.69	0.03
14	TGP-ZO	2.79	0.02
15	Houston Ship Channel	2.97	0.00
16	NGPL-TXOK	2.80	0.01
17	TETCO-M1.30	2.90	0.05
18	Chicago Citygates	2.86	0.03
19	Michcon	2.87	0.04
20	Iroquois (into)	2.39	(0.02)

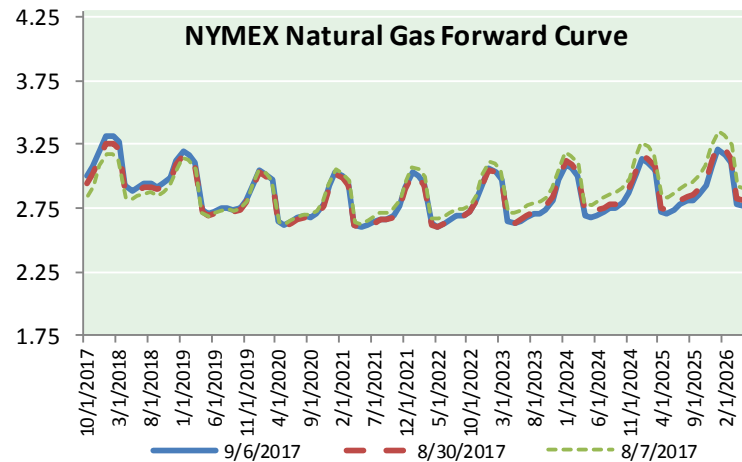
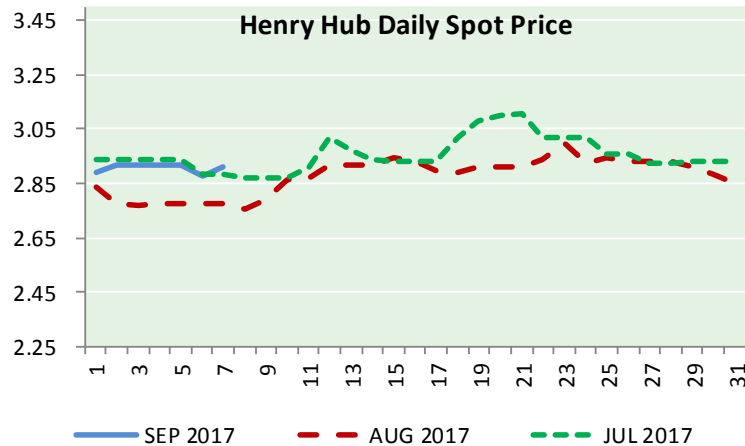
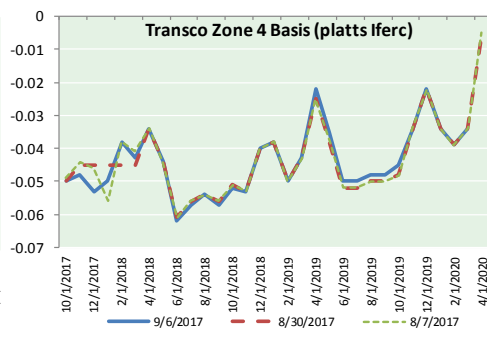
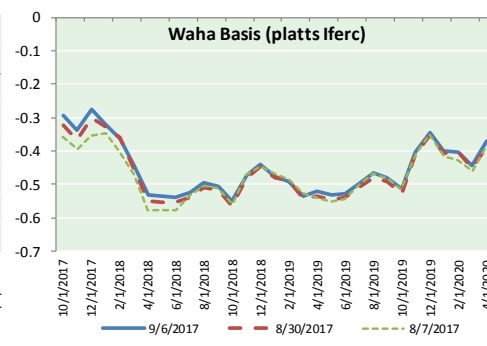
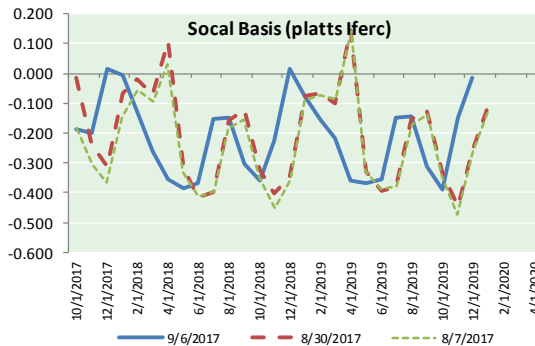
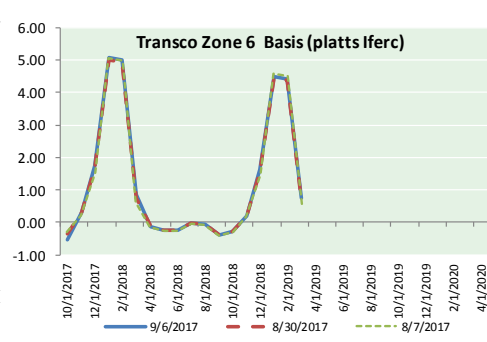
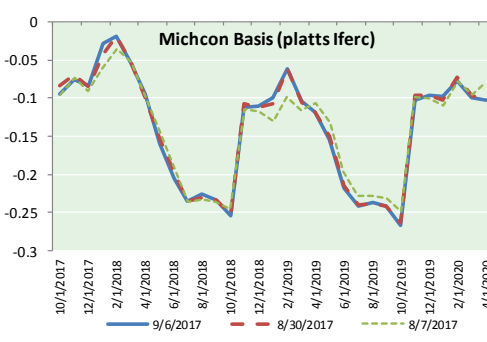
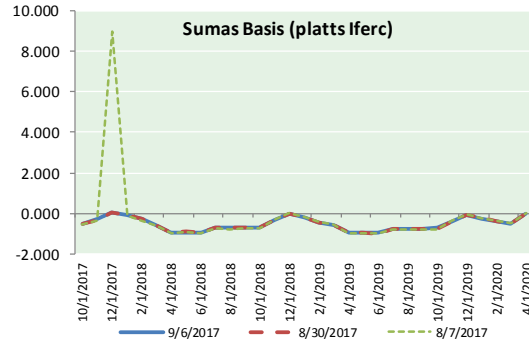
ID	DAILY INDEX	PRICE	CHANGE
21	REX E-ANR	2.80	0.06
22	Leidy-Transco	1.30	0.05
23	Henry	2.93	0.07
24	Transco-85	2.90	0.01
25	Sonat-ZO South	2.89	0.02
26	FGT-Z3	2.97	0.01
27	Dominion-South	1.41	0.03
28	Transco-Z6 (non-NY)	0.00	0.00
29	Transco-Z6 (NY)	2.43	(0.05)
30	Iroquois-Z2	2.35	(0.03)





NATURAL GAS NEWS

NATURAL GAS BASIS FUTURES, HENRY HUB SPOT PRICES, AND FORWARD CURVE



CME NG Option Prices

ATM Call

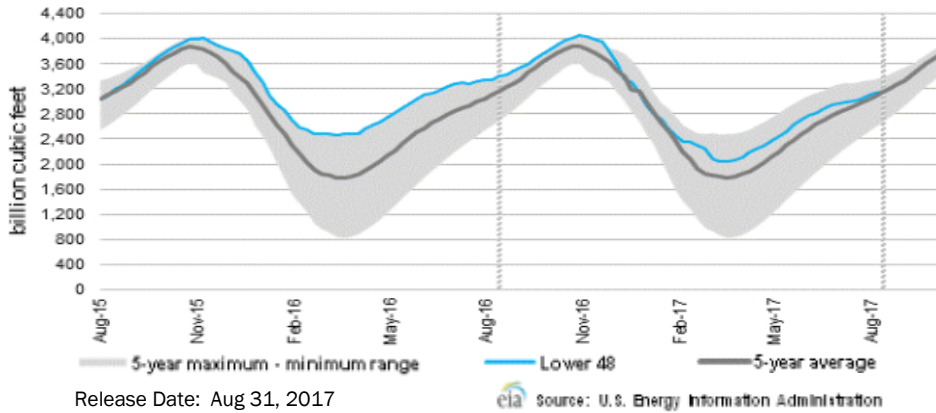
Month	Strike	Close	Imp Vol
Oct-17	3.000	0.098	33.7
Nov-17	3.050	0.148	30.0
Dec-17	3.200	0.204	31.9
Jan-18	3.300	0.278	36.6
Feb-18	3.300	0.356	42.2
Mar-18			
Apr-18			
May-18			
Jun-18			
Jul-18			
Aug-18			
Sep-18			
Oct-18			
Nov-18			
Dec-18			
Jan-19			
Feb-19			

CME NG Option Prices

ATM Put

Month	Strike	Close	Imp Vol
Oct-17	3.000	0.089	33.7
Nov-17	3.050	0.132	31.9
Dec-17	3.200	0.190	32.8
Jan-18	3.300	0.263	37.5
Feb-18	3.300	0.347	43.1
Mar-18			
Apr-18			
May-18			
Jun-18			
Jul-18			
Aug-18			
Sep-18			
Oct-18			
Nov-18			
Dec-18			
Jan-19			
Feb-19			

WEEKLY GAS IN UNDERGROUND STORAGE WITH 5-YR RANGE



Rig Count

Report Date: September 1, 2017

	Total	Change
US -	943	+3
CN -	201	(16)

EIA Weekly NG Storage Estimates and Surveys for September 7, 2017

Range +30 to +83  
 ARM — +62  
 PIRA — +66  
 Reuters — +64

EIA ACTUAL — Due Today At 10:30 AM EST / 9:30 AM CPT

Total Working Gas In Storage

**3,155 BCF**

+30 BCF (LAST WEEK)  
 (239) BCF (LAST YEAR)  
 +8 BCF (5-YR AVG)

U.S. Natural Gas Supply Gas Week 8/24 - 8/30

Average daily values (BCF/D):  
 Last Year (BCF/d)  
 Dry Production — +71.3  
 Total Supply — +77.5  
 Last Week (BCF/d)  
 Dry Production — +71.6  
 Total Supply — +77.2

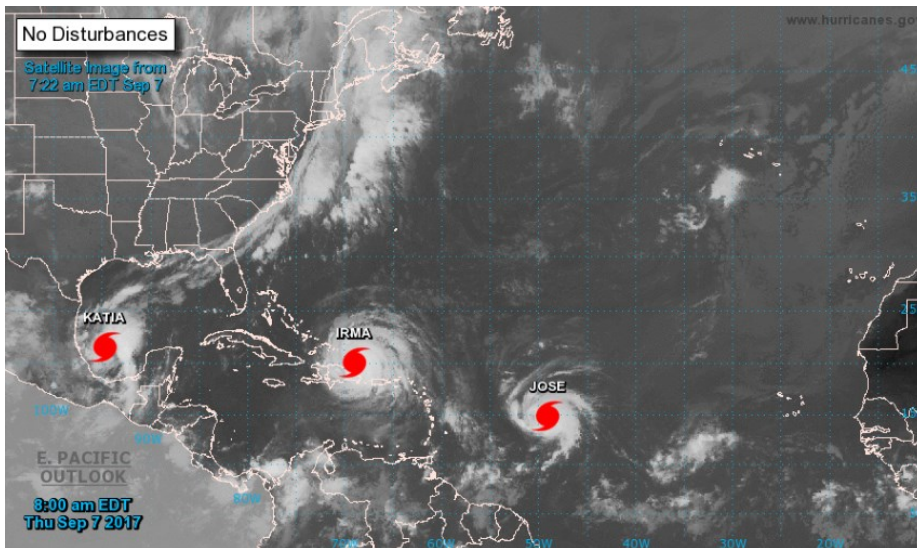
[NEXT REPORT ON SEP 7]

U.S. Natural Gas Demand Gas Week 8/24 - 8/30

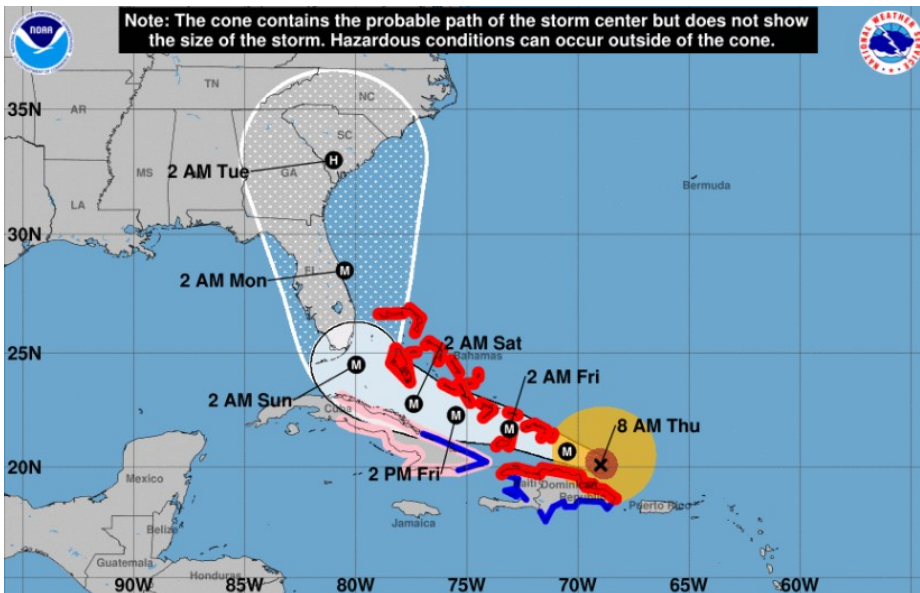
Average daily values (BCF/D):  
 Last Year (BCF/d)  
 Power — +34.6  
 Total Demand — +72.3  
 Last Week (BCF/d)  
 Power — +29.4  
 Total Demand — +68.8

[NEXT REPORT ON SEP 7]

TROPICAL STORM ACTIVITY— ATLANTIC

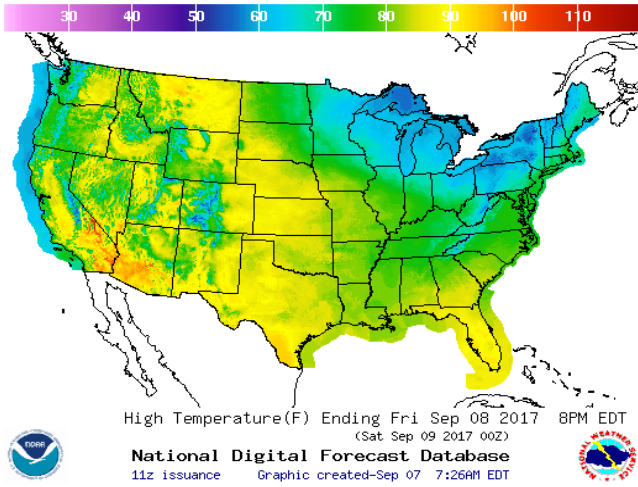


IRMA

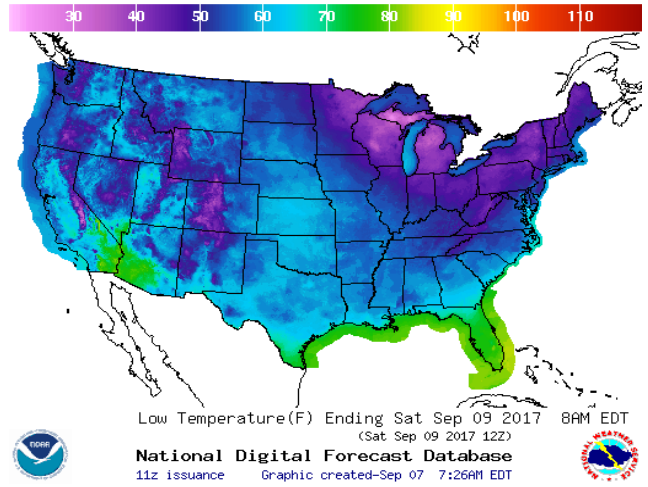


WEATHER – HIGH / LOW TEMPERATURE TOMORROW

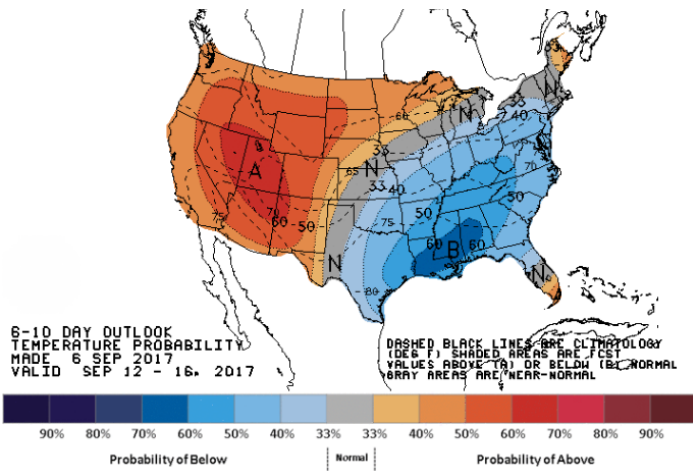
HIGH Temperature



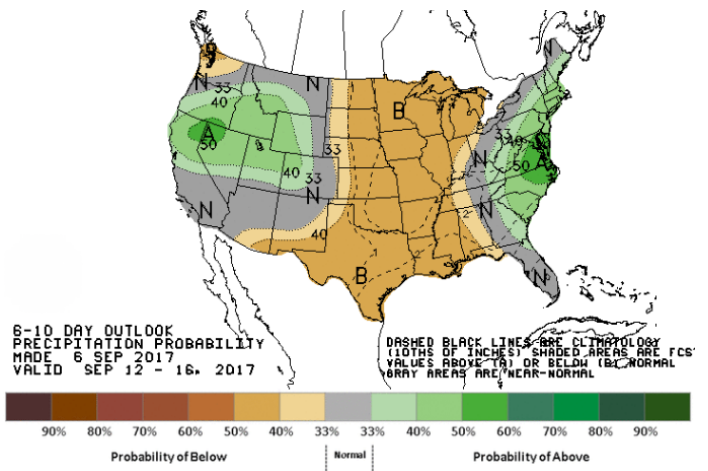
LOW Temperature



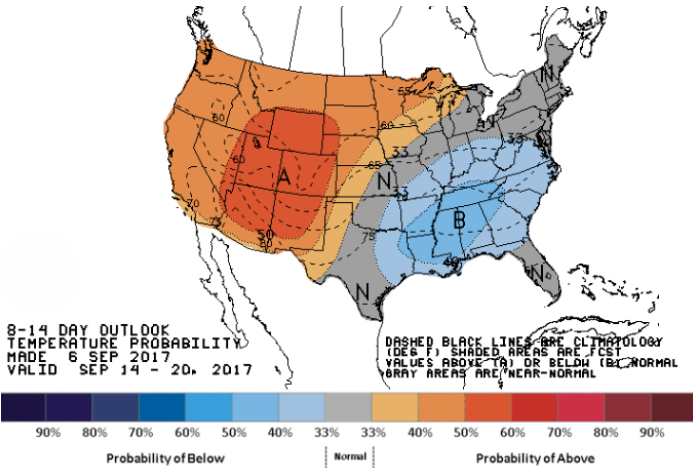
WEATHER – 6 TO 10 DAY OUTLOOK – NOAA  
Temperature



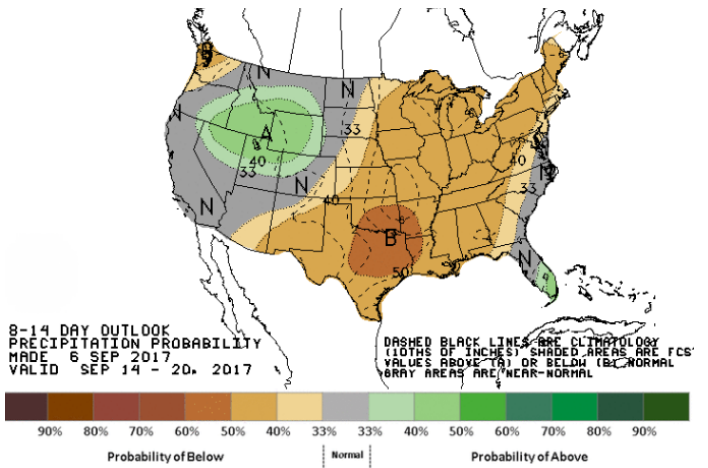
Precipitation



WEATHER – 8 TO 14 DAY OUTLOOK – NOAA  
Temperature



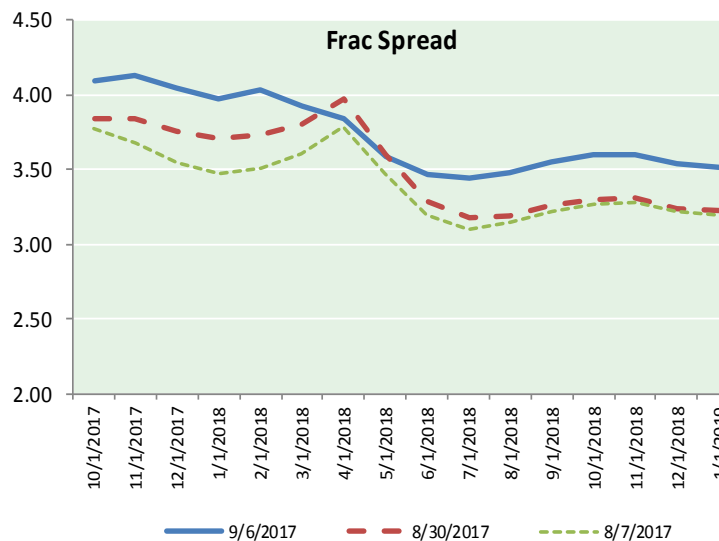
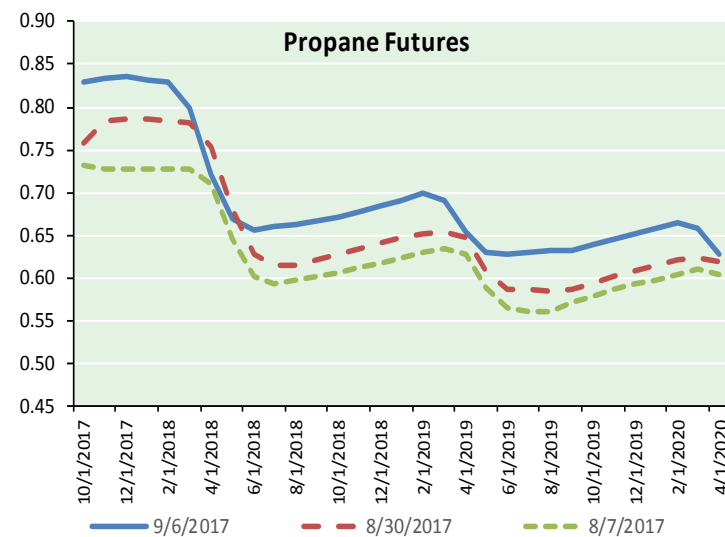
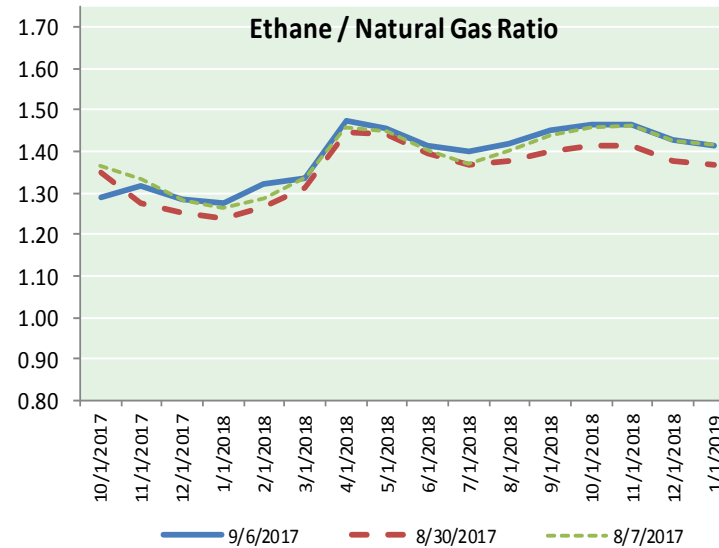
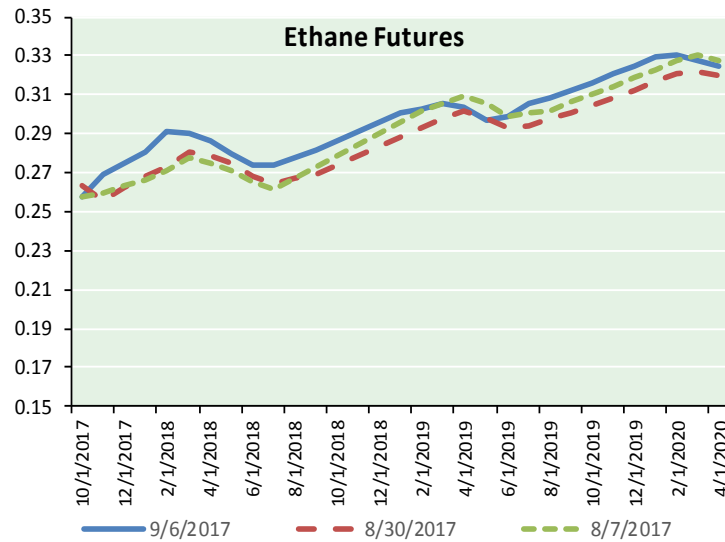
Precipitation



# NATURAL GAS NEWS



## ETHANE FUTURES, NG/ETHANE RATIO, PROPANE FUTURES, AND THE FRAC SPREAD



### CME Future Prices

#### Ethane (C2)

##### Non-LDH— Mont Belvieu

	(cents/gallon)	
Month	Close	Change
Oct-17	0.258	0.008
Nov-17	0.269	0.004
Dec-17	0.275	0.003
Jan-18	0.281	0.001
Feb-18	0.291	0.003
Mar-18	0.290	0.004
Apr-18	0.287	0.004
May-18	0.280	0.004
Jun-18	0.274	0.003
Jul-18	0.274	0.001
Aug-18	0.278	0.002
Sep-18	0.282	0.002

1YR Strip 0.278 0.003

### CME Future Prices

#### Propane (C3)

##### Non-LDH— Mont Belvieu

	(cents/gallon)	
Month	Close	Change
Oct-17	0.829	0.012
Nov-17	0.834	0.006
Dec-17	0.835	0.006
Jan-18	0.833	0.007
Feb-18	0.829	0.007
Mar-18	0.799	0.006
Apr-18	0.721	0.006
May-18	0.669	0.005
Jun-18	0.657	0.004
Jul-18	0.659	0.006
Aug-18	0.662	0.005
Sep-18	0.667	0.005

1YR Strip 0.749 0.006

# NATURAL GAS NEWS



## Prompt WTI (CL) Crude

### Daily Sentiment

**NEUTRAL**



RESISTANCE

49.00 & 49.54

SUPPORT

48.13 & 47.74

### FOLLOW US ON TWITTER:



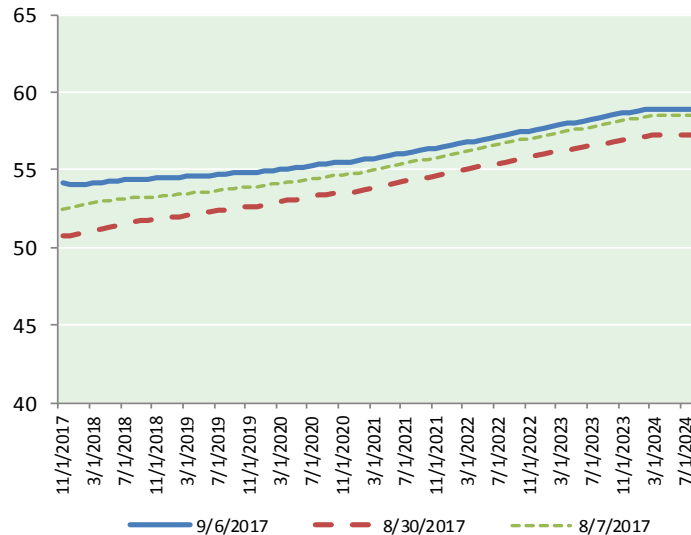
@MPG\_NatGasNews

## NYMEX Brent (BZ)

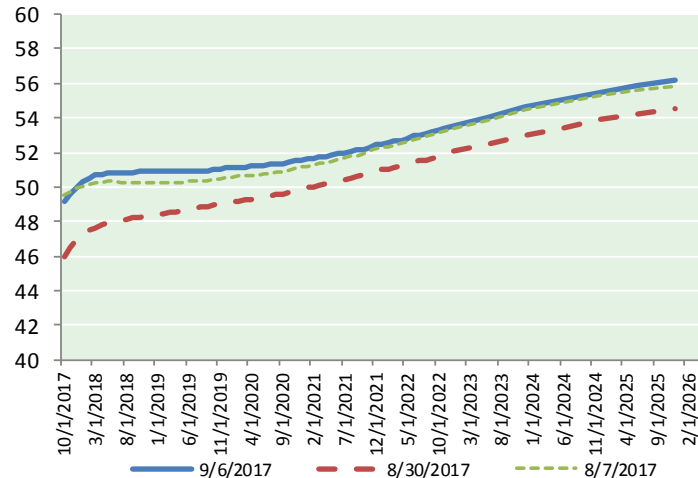
### Futures

Month	Close	Change
Nov-17	54.20	0.82
Dec-17	54.07	0.71
Jan-18	54.05	0.64
Feb-18	54.10	0.60
Mar-18	54.17	0.58
Apr-18	54.21	0.56
May-18	54.24	0.53
Jun-18	54.28	0.51
Jul-18	54.34	0.49
Aug-18	54.38	0.47
Sep-18	54.39	0.45
Oct-18	54.42	0.44
Nov-18	54.45	0.42
Dec-18	54.48	0.41
Jan-19	54.50	0.40
Feb-19	54.53	0.38
Mar-19	54.57	0.37
Apr-19	54.64	0.35
May-19	54.66	0.34
Jun-19	54.65	0.33
Jul-19	54.72	0.31
Aug-19	54.75	0.30
Sep-19	54.79	0.29
Oct-19	54.84	0.27
1YR Strip 2017	54.24	0.57
5YR Strip	55.37	0.29

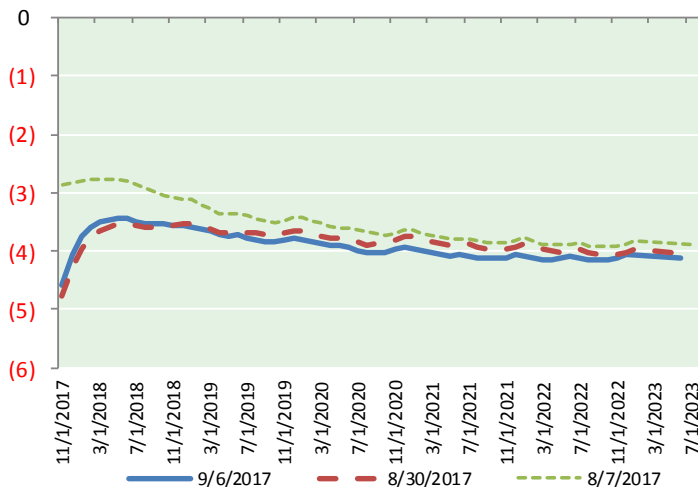
## BRENT CRUDE FORWARD CURVE



## WTI CRUDE FORWARD CURVE



## WTI-BRENT SPREAD



## FRAC Spread

### Specifications

Ethane : 42%	66,500 btu/g
Propane: 28%	90,830 btu/g
Butane: 11%	102,916 btu/g
Iso-Butane: 6%	98,935 btu/g
Natural Gasoline: 13%	115,021 btu/g

## Prompt NGL Futures

### (\$/gallon)

	Oct-17	Close	Change
Butane	0.979	0.009	
Iso-Butane	0.991	0.013	
Nat Gasoline	1.114	0.006	

## NYMEX WTI (CL) Futures

Month	Close	Change
Oct-17	49.16	0.50
Nov-17	49.62	0.48
Dec-17	50.00	0.47
Jan-18	50.31	0.45
Feb-18	50.52	0.42
Mar-18	50.66	0.40
Apr-18	50.75	0.38
May-18	50.80	0.35
Jun-18	50.83	0.33
Jul-18	50.83	0.31
Aug-18	50.84	0.30
Sep-18	50.86	0.29
Oct-18	50.88	0.28
Nov-18	50.90	0.27
Dec-18	50.92	0.26
Jan-19	50.91	0.24
Feb-19	50.91	0.23
Mar-19	50.91	0.22
Apr-19	50.91	0.20
May-19	50.92	0.19
Jun-19	50.94	0.18
Jul-19	50.94	0.16
Aug-19	50.95	0.14
Sep-19	50.96	0.13
1YR Strip 2017	50.43	0.39
5YR Strip	51.44	0.13