

NATURAL GAS



NEWS

SEPTEMBER 6, 2017

Prior Day's NYMEX Oct-17 Contract (CT)



NYMEX NG Futures

Month	Close	Change
Oct-17	2.972	(0.098)
Nov-17	3.044	(0.092)
Dec-17	3.189	(0.081)
Jan-18	3.287	(0.079)
Feb-18	3.285	(0.076)
Mar-18	3.244	(0.074)
Apr-18	2.911	(0.032)
May-18	2.875	(0.027)
Jun-18	2.901	(0.024)
Jul-18	2.927	(0.022)
Aug-18	2.931	(0.021)
Sep-18	2.907	(0.021)
Oct-18	2.926	(0.021)
Nov-18	2.975	(0.020)
Dec-18	3.102	(0.019)
Jan-19	3.184	(0.019)
Feb-19	3.158	(0.019)
Mar-19	3.094	(0.018)
Apr-19	2.729	(0.007)
May-19	2.697	(0.007)
Jun-19	2.719	(0.007)
Jul-19	2.740	(0.007)
Aug-19	2.744	(0.006)
Sep-19	2.728	(0.005)
1YR Strip	3.039	(0.054)
2017	3.068	(0.090)
5YR Strip	2.852	(0.016)

IN THE NEWS

Conoco says Eagle Ford oil output nearing 80 pct of pre-Harvey level — Reuters reports: ConocoPhillips said on Monday its oil production in the Eagle Ford shale region had hit roughly 50 percent of its pre-hurricane rate of 130,000 barrels of oil equivalent per day, and expected it to reach 80 percent by the evening.

- Conoco says Eagle Ford oil output nearing 80 pct of pre-Harvey level
- Storm Irma could cause further damage to America's beleaguered oil and gas infrastructure

The company suspended all operations and shut in production in the Texas region on Aug. 25 due to Hurricane Harvey. Conoco said production associated with natural gas liquids at Eagle Ford was expected to be the slowest to recover due to offtake constraints, which it said could last "at least another week." For more on this story visit reuters.com or click <http://bit.ly/2wFIiba>

Storm Irma could cause further damage to America's beleaguered oil and gas infrastructure — Energy Voice reports: With top winds of 180 miles per hour, Irma is a Category 5 storm, the highest on the five-step Saffir Simpson scale. It's on a track to strike or graze Caribbean islands from Antigua to Puerto Rico through Wednesday, and Cuba by Friday, the U.S. National Hurricane Center said in an advisory at 11 a.m. New York time. Florida has declared a state of emergency and may begin to feel Irma's potentially deadly winds as early as Saturday. Oil and natural gas markets are also keeping a close eye on the storm. It's unclear whether Irma will charge into the Gulf of Mexico, home to drilling and production platforms, or follow Harvey's path into the heart of the U.S. refining region. Only three Category 5 hurricanes have hit the contiguous 48 U.S. states, Henson said. The Labor Day Hurricane of 1935 that devastated the Florida Keys, Hurricane Camille in 1969 and Hurricane Andrew that cut across Florida in 1992. For more visit energyvoice.com or click the following link <http://bit.ly/2vJsUNv>

12 MONTH CANDLESTICK (WEEKLY)



Prompt Natural Gas (NG) Daily Sentiment

NEUTRAL



RESISTANCE
3.03 & 3.09
SUPPORT
2.90 & 2.84

Trading Summary

NATURAL GAS

Futures	Close	Change
NG	2.972	(0.098)
Volume	347,618	(325,830)
Open Int.	1,305,998	9,122

CRUDE AND GASOLINE

Futures	Close	Change
Crude	48.66	1.37
RBOB	1.6991	(0.0488)
Crude/NG	16.37	0.97

METALS

Futures	Close	Change
Gold	1,340.60	0.20

EQUITIES

Exchange	Close	Change
DOW	21,753.31	(234.25)
S&P 500	2,457.85	(18.70)

CURRENCY

Currency	Close	Change
EUR/USD		
USD/CND	1.2391	0.0014

Contact Us



Mansfield Energy Corp
1025 Airport Pkwy
Gainesville, GA 30501

www.mansfield.energy
info@mansfieldoil.com

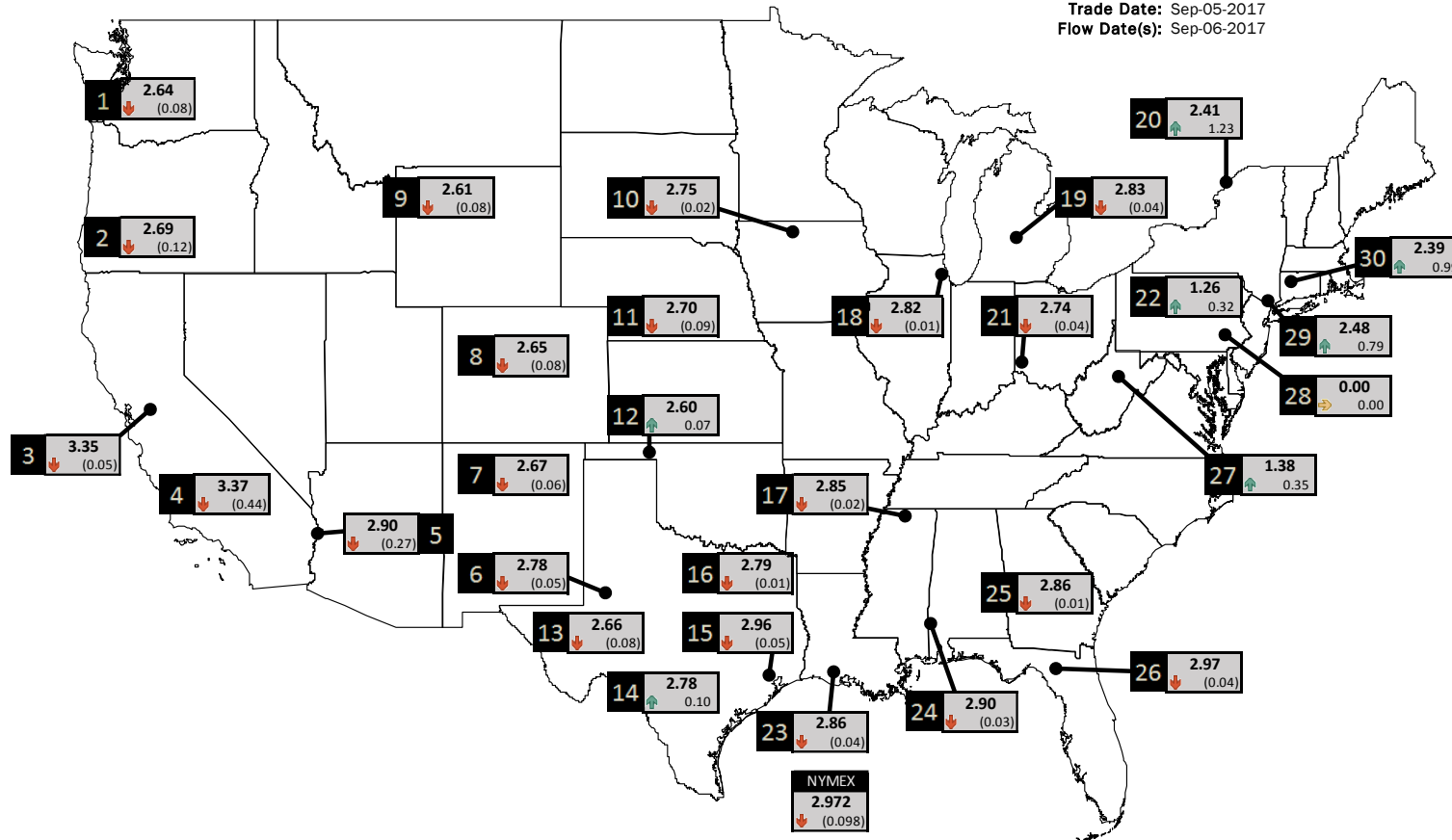
Phone: (800) 695-6626



NATURAL GAS NEWS

PHYSICAL SPOT NATURAL GAS PRICE MAP

Trade Date: Sep-05-2017
Flow Date(s): Sep-06-2017



ID	DAILY INDEX	PRICE	CHANGE
1	Stanfield	2.64	(0.08)
2	Malin	2.69	(0.12)
3	PG&E - Citygate	3.35	(0.05)
4	SoCal-Citygate	3.37	(0.44)
5	SoCal Border	2.90	(0.27)
6	Waha	2.78	(0.05)
7	EPSJ Blanco Pool	2.67	(0.06)
8	Opal Plant Tailgate	2.65	(0.08)
9	NWP-Wyoming	2.61	(0.08)
10	Ventura	2.75	(0.02)

ID	DAILY INDEX	PRICE	CHANGE
11	NGPL-Midcont Pool	2.70	(0.09)
12	Panhandle	2.60	0.07
13	EP-Permian	2.66	(0.08)
14	TGP-ZO	2.78	0.10
15	Houston Ship Channel	2.96	(0.05)
16	NGPL-TXOK	2.79	(0.01)
17	TETCO-M1 30	2.85	(0.02)
18	Chicago Citygates	2.82	(0.01)
19	Michcon	2.83	(0.04)
20	Iroquois (into)	2.41	1.23

ID	DAILY INDEX	PRICE	CHANGE
21	REX E-ANR	2.74	(0.04)
22	Leidy-Transco	1.26	0.32
23	Henry	2.86	(0.04)
24	Transco-85	2.90	(0.03)
25	Sonat-ZO South	2.86	(0.01)
26	FGT-Z3	2.97	(0.04)
27	Dominion-South	1.38	0.35
28	Transco-Z6 (non-NY)	0.00	0.00
29	Transco-Z6 (NY)	2.48	0.79
30	Iroquois-Z2	2.39	0.99

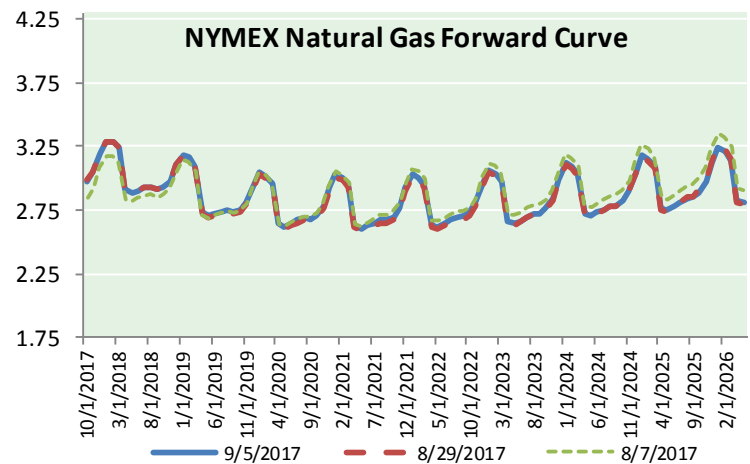
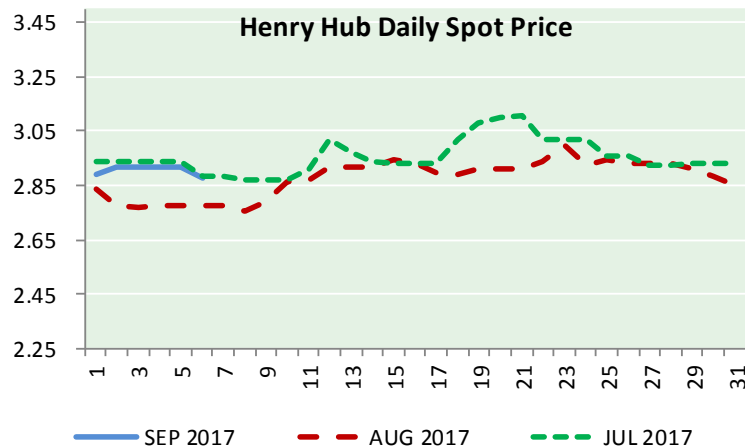
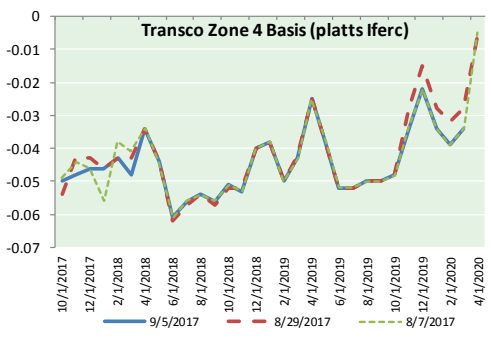
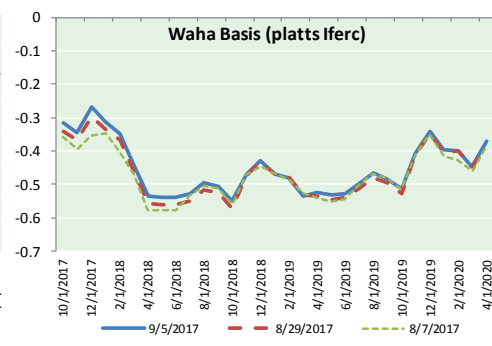
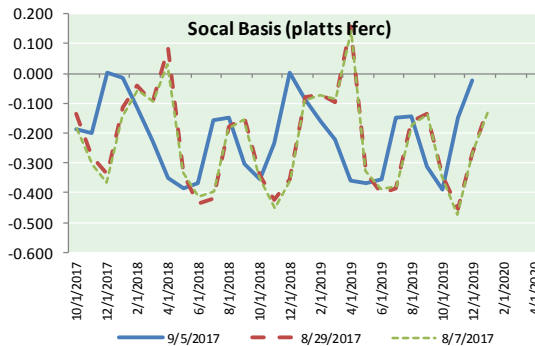
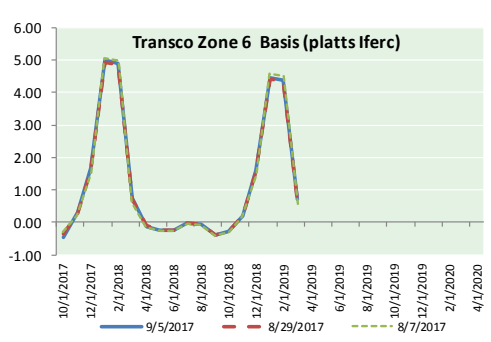
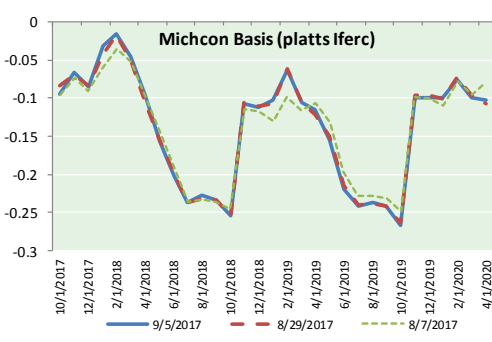
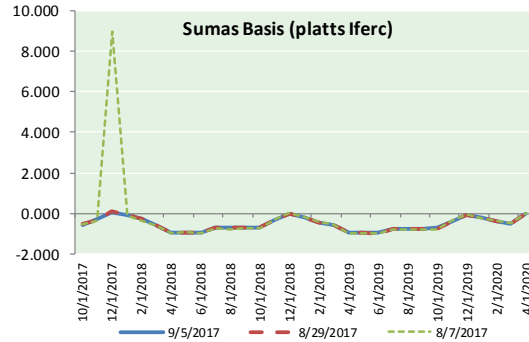
DISCLAIMER: The content herein is privileged and confidential. Content is presented for informational purposes and is a reflection of the market opinions of its authors subject to change without notice. Content is derived from sources believed to be accurate at the time of release but carries no guarantee of accuracy or completeness. Mansfield Energy Corp and its clients may or may not take positions similar or opposite those discussed herein. The reader should realize that the trading of commodities involves risk, and the reader assumes all responsibility for the risk of financial losses.





NATURAL GAS NEWS

NATURAL GAS BASIS FUTURES, HENRY HUB SPOT PRICES, AND FORWARD CURVE



CME NG Option Prices

ATM Call

Month	Strike	Close	Imp Vol
Oct-17	2.950	0.091	30.0
Nov-17	3.050	0.139	31.9
Dec-17	3.200	0.192	32.8
Jan-18	3.300	0.264	37.5
Feb-18	3.300	0.344	43.1
Mar-18			
Apr-18			
May-18			
Jun-18			
Jul-18			
Aug-18			
Sep-18			
Oct-18			
Nov-18			
Dec-18			
Jan-19			
Feb-19			

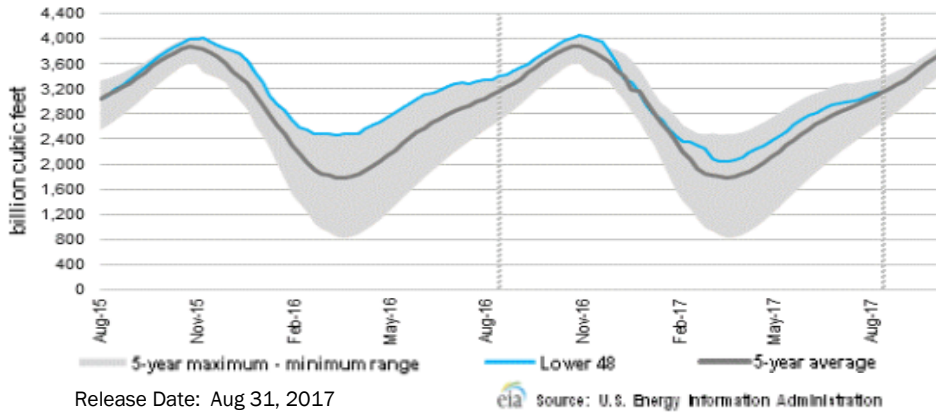
CME NG Option Prices

ATM Put

Month	Strike	Close	Imp Vol
Oct-17	2.950	0.071	28.1
Nov-17	3.050	0.141	30.0
Dec-17	3.200	0.202	31.9
Jan-18	3.300	0.283	37.5
Feb-18	3.300	0.358	42.2
Mar-18			
Apr-18			
May-18			
Jun-18			
Jul-18			
Aug-18			
Sep-18			
Oct-18			
Nov-18			
Dec-18			
Jan-19			
Feb-19			



WEEKLY GAS IN UNDERGROUND STORAGE WITH 5-YR RANGE



Rig Count

Report Date: September 1, 2017

	Total	Change
US -	943	+3
CN -	201	(16)

EIA Storage History for 35th Week of Year (Due to Report Sep 7)

Year	Week Ending	BCF
2013	Aug 30, 2013	+58
2014	Aug 29, 2014	+78
2015	Aug 28, 2015	+96
2016	Aug 26, 2016	+51

ESTIMATE – +TBD

Total Working Gas In Storage

3,155 BCF

- +30 BCF (LAST WEEK)
- (239) BCF (LAST YEAR)
- +8 BCF (5-YR AVG)

U.S. Natural Gas Supply Gas Week 8/24 - 8/30

Average daily values (BCF/D):
 Last Year (BCF/d)
 Dry Production – +71.3
 Total Supply – +77.5
 Last Week (BCF/d)
 Dry Production – +71.6
 Total Supply – +77.2

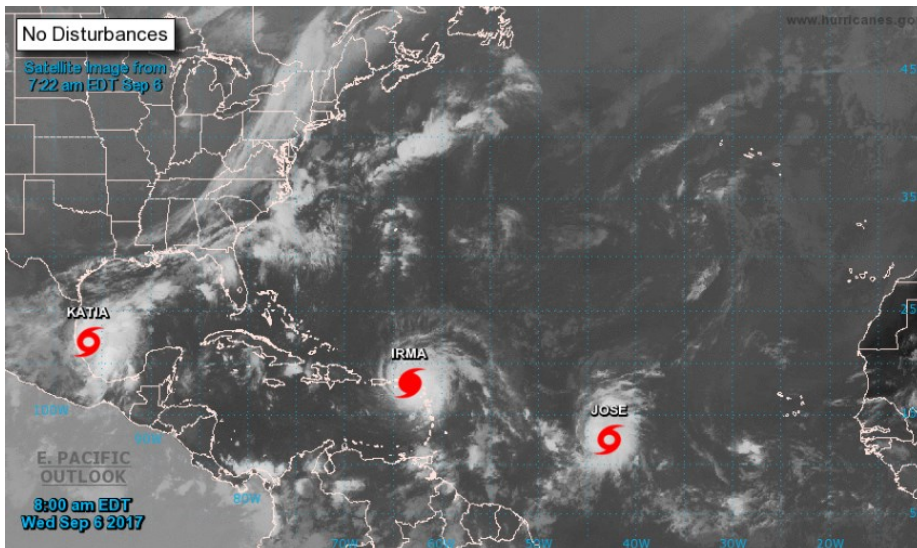
[NEXT REPORT ON SEP 7]

U.S. Natural Gas Demand Gas Week 8/24 - 8/30

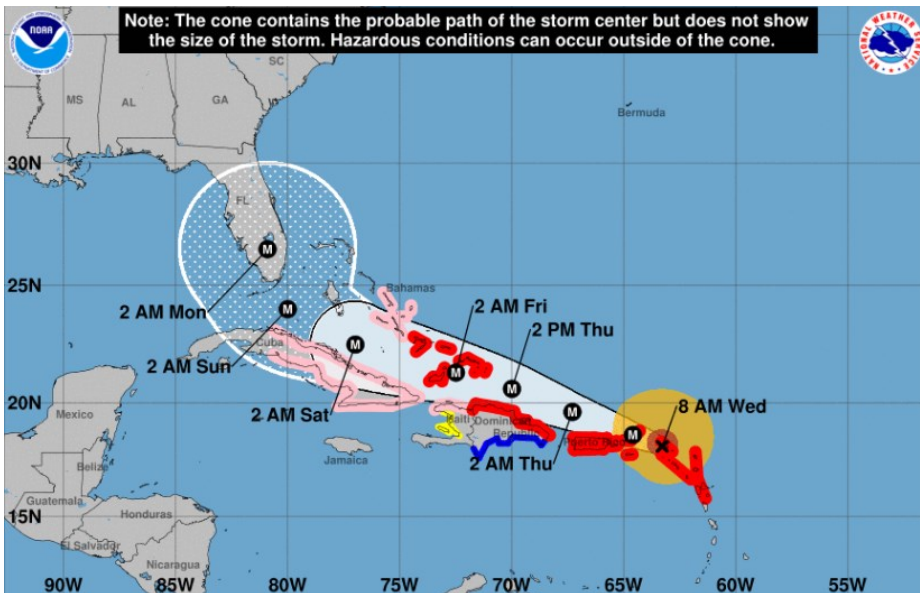
Average daily values (BCF/D):
 Last Year (BCF/d)
 Power – +34.6
 Total Demand – +72.3
 Last Week (BCF/d)
 Power – +29.4
 Total Demand – +68.8

[NEXT REPORT ON SEP 7]

TROPICAL STORM ACTIVITY– ATLANTIC

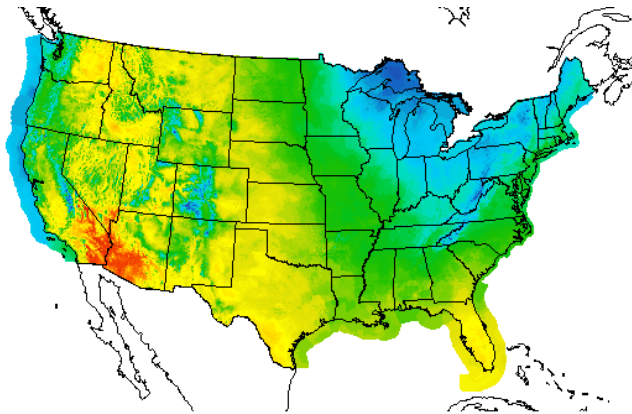


IRMA



WEATHER – HIGH / LOW TEMPERATURE TOMORROW

HIGH Temperature



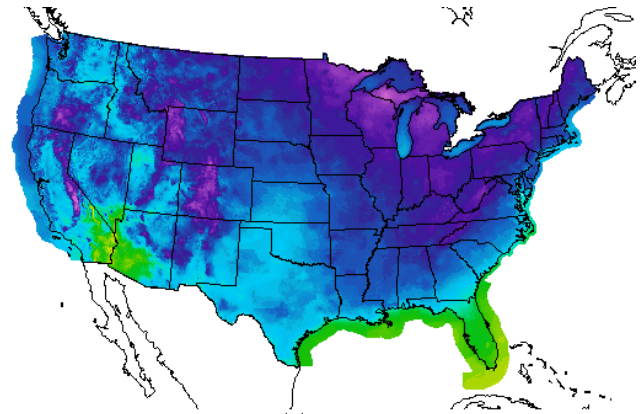
High Temperature(F) Ending Thu Sep 07 2017 8PM EDT
(Fri Sep 08 2017 00Z)



National Digital Forecast Database
20z issuance Graphic created-Sep 05 4:39PM EDT



LOW Temperature



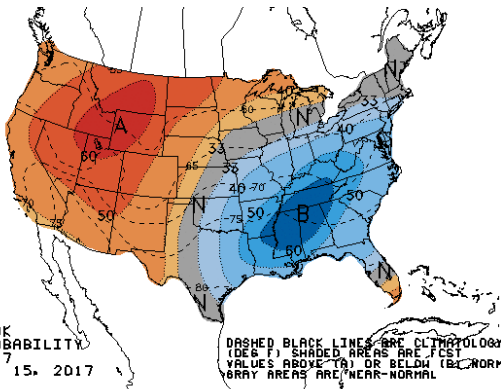
Low Temperature(F) Ending Fri Sep 08 2017 8AM EDT
(Fri Sep 08 2017 12Z)



National Digital Forecast Database
18z issuance Graphic created-Sep 05 2:28PM EDT

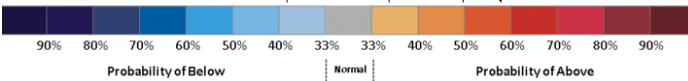


WEATHER – 6 TO 10 DAY OUTLOOK – NOAA
Temperature

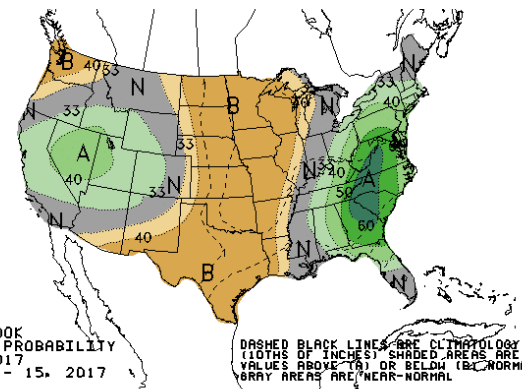


6-10 DAY OUTLOOK
TEMPERATURE PROBABILITY
MADE 5 SEP 2017
VALID SEP 11 - 15, 2017

DASHED BLACK LINES ARE CLIMATOLOGY
(DEG F) SHADED AREAS ARE FCST
VALUES ABOVE (A) OR BELOW (B) NORMAL
GRAY AREAS ARE NEAR-NORMAL

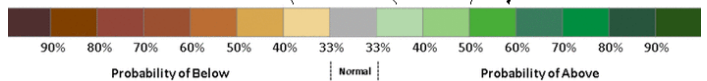


Precipitation

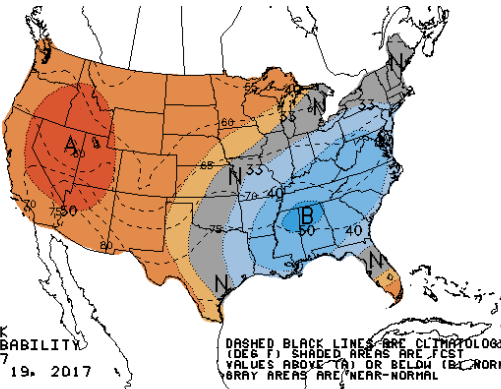


6-10 DAY OUTLOOK
PRECIPITATION PROBABILITY
MADE 5 SEP 2017
VALID SEP 11 - 15, 2017

DASHED BLACK LINES ARE CLIMATOLOGY
(10THS OF INCHES) SHADED AREAS ARE FCST
VALUES ABOVE (A) OR BELOW (B) NORMAL
GRAY AREAS ARE NEAR-NORMAL

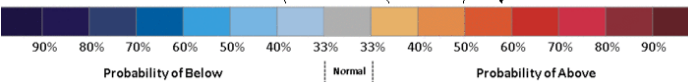


WEATHER – 8 TO 14 DAY OUTLOOK – NOAA
Temperature

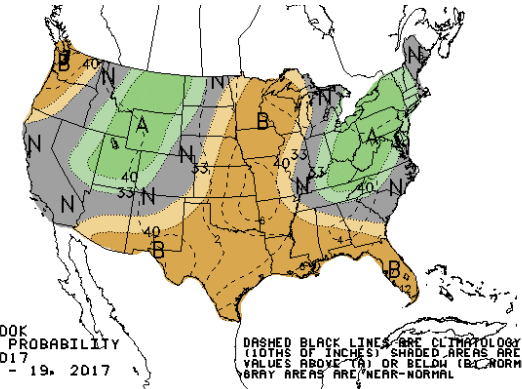


8-14 DAY OUTLOOK
TEMPERATURE PROBABILITY
MADE 5 SEP 2017
VALID SEP 13 - 19, 2017

DASHED BLACK LINES ARE CLIMATOLOGY
(DEG F) SHADED AREAS ARE FCST
VALUES ABOVE (A) OR BELOW (B) NORMAL
GRAY AREAS ARE NEAR-NORMAL

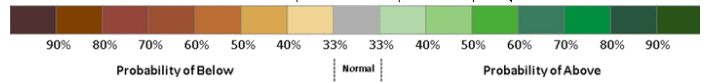


Precipitation



8-14 DAY OUTLOOK
PRECIPITATION PROBABILITY
MADE 5 SEP 2017
VALID SEP 13 - 19, 2017

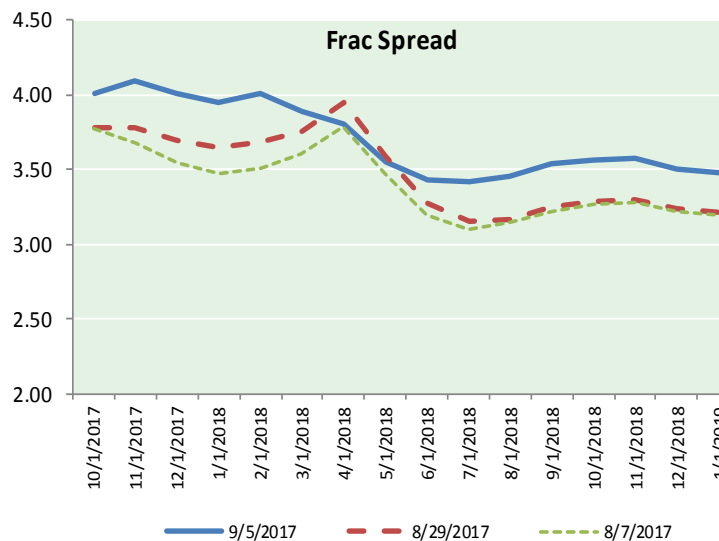
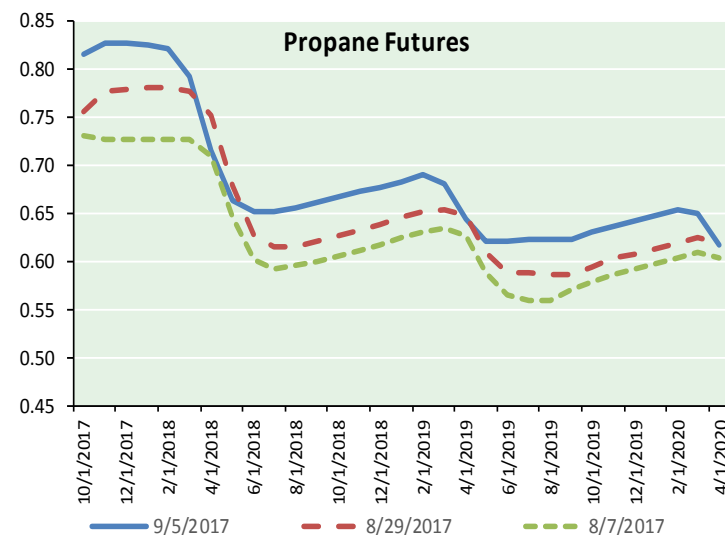
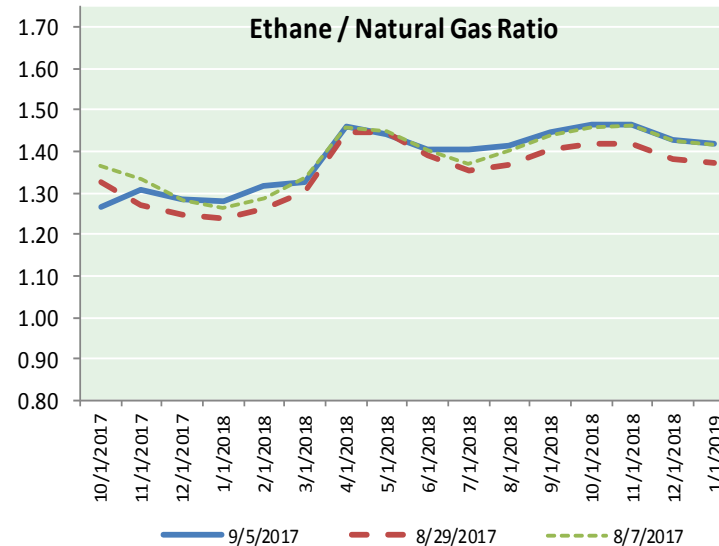
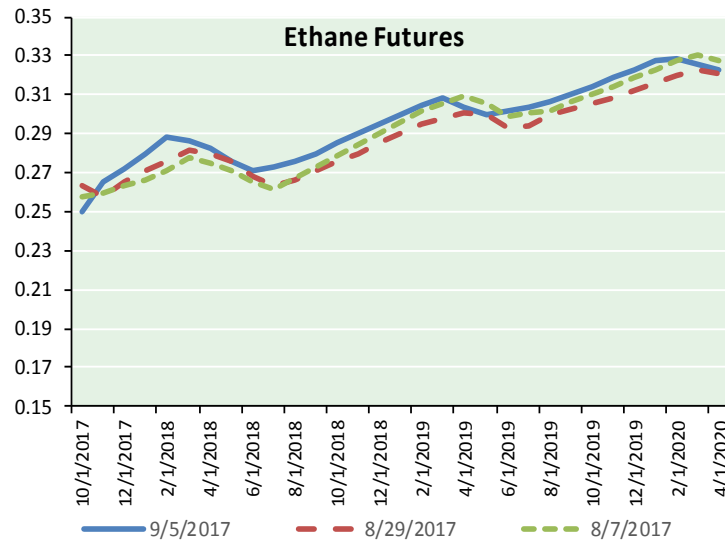
DASHED BLACK LINES ARE CLIMATOLOGY
(10THS OF INCHES) SHADED AREAS ARE FCST
VALUES ABOVE (A) OR BELOW (B) NORMAL
GRAY AREAS ARE NEAR-NORMAL



NATURAL GAS NEWS



ETHANE FUTURES, NG/ETHANE RATIO, PROPANE FUTURES, AND THE FRAC SPREAD



CME Future Prices

Ethane (C2)

Non-LDH— Mont Belvieu

(cents/gallon)		
Month	Close	Change
Oct-17	0.250	0.015
Nov-17	0.265	0.008
Dec-17	0.272	0.003
Jan-18	0.280	0.000
Feb-18	0.288	(0.001)
Mar-18	0.286	(0.001)
Apr-18	0.283	0.000
May-18	0.276	(0.001)
Jun-18	0.271	0.001
Jul-18	0.273	0.001
Aug-18	0.275	0.000
Sep-18	0.280	0.000

1YR Strip 0.275 0.002

CME Future Prices

Propane (C3)

Non-LDH— Mont Belvieu

(cents/gallon)		
Month	Close	Change
Oct-17	0.816	0.004
Nov-17	0.828	0.001
Dec-17	0.829	0.003
Jan-18	0.826	0.000
Feb-18	0.823	0.001
Mar-18	0.793	0.002
Apr-18	0.716	0.002
May-18	0.664	0.004
Jun-18	0.653	0.002
Jul-18	0.653	0.002
Aug-18	0.657	0.004
Sep-18	0.662	0.004

1YR Strip 0.743 0.002

NATURAL GAS NEWS



Prompt WTI (CL) Crude Daily Sentiment

BULLISH



RESISTANCE
50.00 & 51.16
SUPPORT
48.24 & 47.50

FOLLOW US ON TWITTER:



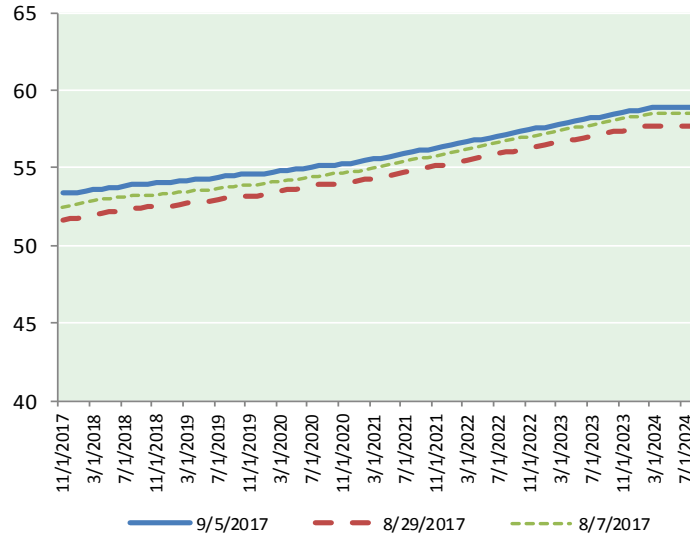
@MPG_NatGasNews

NYMEX Brent (BZ)

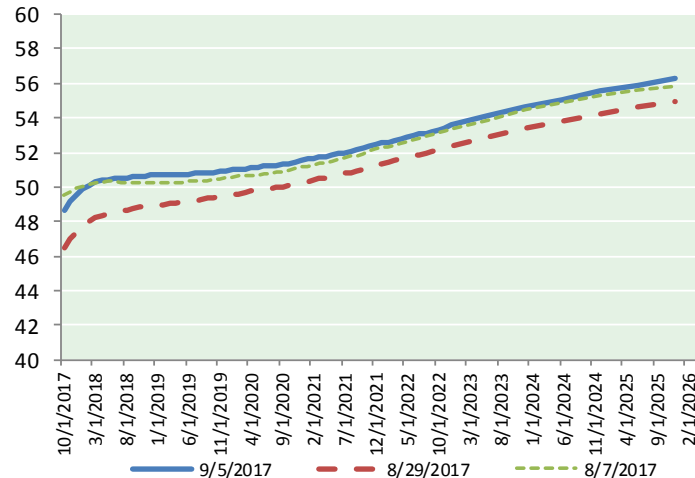
Futures

Month	Close	Change
Nov-17	53.38	0.63
Dec-17	53.36	0.57
Jan-18	53.41	0.52
Feb-18	53.50	0.49
Mar-18	53.59	0.48
Apr-18	53.65	0.46
May-18	53.71	0.44
Jun-18	53.77	0.41
Jul-18	53.85	0.39
Aug-18	53.91	0.37
Sep-18	53.94	0.34
Oct-18	53.98	0.32
Nov-18	54.03	0.31
Dec-18	54.07	0.29
Jan-19	54.10	0.28
Feb-19	54.15	0.26
Mar-19	54.20	0.25
Apr-19	54.29	0.24
May-19	54.32	0.23
Jun-19	54.32	0.22
Jul-19	54.41	0.21
Aug-19	54.45	0.19
Sep-19	54.50	0.17
Oct-19	54.57	0.16
1YR Strip 2017	53.67	0.45
5YR Strip	55.10	0.16

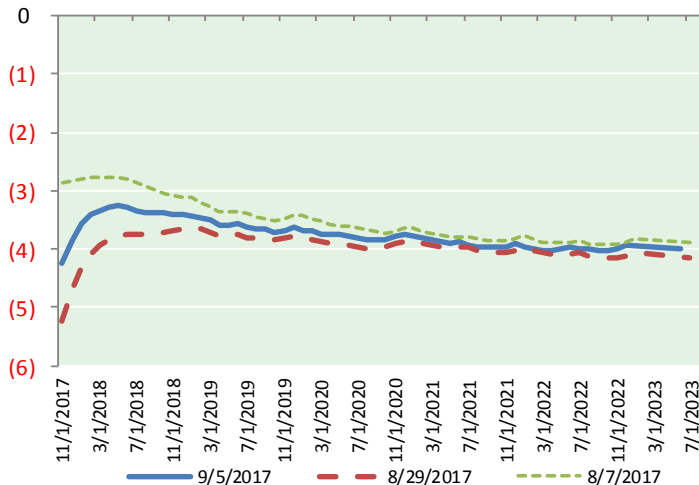
BRENT CRUDE FORWARD CURVE



WTI CRUDE FORWARD CURVE



WTI-BRENT SPREAD



FRAC Spread

Specifications

Ethane : 42%	66,500 btu/g
Propane: 28%	90,830 btu/g
Butane: 11%	102,916 btu/g
Iso-Butane: 6%	98,935 btu/g
Natural Gasoline: 13%	115,021 btu/g

Prompt NGL Futures

(\$/gallon)

Oct-17	Close	Change
Butane	0.969	(0.001)
Iso-Butane	0.979	(0.009)
Nat Gasoline	1.108	(0.004)

NYMEX WTI (CL) Futures

Month	Close	Change
Oct-17	48.66	1.37
Nov-17	49.14	1.15
Dec-17	49.53	0.99
Jan-18	49.86	0.87
Feb-18	50.10	0.78
Mar-18	50.26	0.71
Apr-18	50.37	0.66
May-18	50.45	0.63
Jun-18	50.50	0.60
Jul-18	50.52	0.57
Aug-18	50.54	0.54
Sep-18	50.57	0.52
Oct-18	50.60	0.50
Nov-18	50.63	0.47
Dec-18	50.66	0.45
Jan-19	50.67	0.44
Feb-19	50.68	0.42
Mar-19	50.69	0.40
Apr-19	50.71	0.38
May-19	50.73	0.36
Jun-19	50.76	0.33
Jul-19	50.78	0.31
Aug-19	50.81	0.29
Sep-19	50.83	0.26
1YR Strip 2017	50.04	0.78
5YR Strip	51.31	0.29