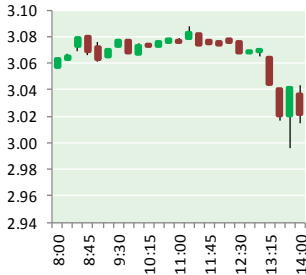


NATURAL GAS



SEPTEMBER 27, 2018

Prior Day's NYMEX Oct-18 Contract (CT)



NYMEX NG Futures

Month	Close	Change
Nov-18	2.980	(0.078)
Dec-18	3.062	(0.067)
Jan-19	3.145	(0.064)
Feb-19	3.089	(0.047)
Mar-19	2.922	(0.030)
Apr-19	2.641	(0.001)
May-19	2.608	0.001
Jun-19	2.638	0.003
Jul-19	2.670	0.004
Aug-19	2.671	0.004
Sep-19	2.653	0.005
Oct-19	2.671	0.005
Nov-19	2.717	0.005
Dec-19	2.840	0.006
Jan-20	2.933	0.007
Feb-20	2.886	(0.002)
Mar-20	2.767	(0.012)
Apr-20	2.520	0.005
May-20	2.492	0.007
Jun-20	2.520	0.008
Jul-20	2.550	0.008
Aug-20	2.555	0.008
Sep-20	2.539	0.008
Oct-20	2.555	0.008
1YR Strip	2.813	(0.022)
2018	3.021	(0.073)
5YR Strip	2.653	0.002

IN THE NEWS

Independent expert to conduct sweeping safety review of natural gas networks in Mass.—Boston Globe reported: The Baker administration will hire an independent evaluator to conduct a sweeping safety study of the natural gas distribution networks in Massachusetts, a process that will be financed by the utilities under an emergency order linked to the fatal Merrimack Valley

- **Independent expert to conduct sweeping safety review of natural gas networks in Mass.**
- **Natural gas pipeline will cross county**

gas explosions. The push to hire the evaluator was announced Wednesday by the state Department of Public Utilities, the state agency in charge of overseeing natural gas distribution systems in Massachusetts. "The independent evaluator's review will further the Department's [safety] efforts by performing an additional examination of the physical condition and safety of the distribution system, as well as the operational and maintenance functions of natural gas companies," Department of Public Utilities Chairwoman Angela O'Connor said in a statement. For more on this story visit [bostonglobe.com](https://bit.ly/2zA2EWc) or click <https://bit.ly/2zA2EWc>

Natural gas pipeline will cross county—Fredericksburg Standard reported: One of North America's largest pipeline companies is looking to cross Gillespie County with a natural gas pipeline stretching from the Permian Basin to near the Gulf of Mexico. Kinder Morgan officials told the Standard-Radio Post on Tuesday it is or will soon be in contact with landowners of 233 parcels in southern Gillespie County who may be affected. "We own the pipe, someone else owns the gas," said Allen Fore, Kinder Morgan vice president of public affairs. "We're in the initial stages where we are contacting landowners, planning routes and starting permits." The buried pipeline will be a 430-mile line starting north of Fort Stockton and stretching across Texas to its destinations near Houston. It will connect with other lines that will reach down near Agua Dulce. Both major lines will feed smaller lines that stretch across Southeast and South Texas. Some of its product will end up in Mexico. For more on this story visit [fredericksburgstandard.com](https://bit.ly/2QeUjNn) or click <https://bit.ly/2QeUjNn>

Prompt Natural Gas (NG) Daily Sentiment

BULLISH



RESISTANCE
3.04 & 3.10
SUPPORT
2.94 & 2.91

Trading Summary

NATURAL GAS

Futures	Close	Change
NG	2.980	(0.078)
Volume	603,806	(488,871)
Open Int.	1,632,075	17,577

CRUDE AND GASOLINE

Futures	Close	Change
Crude	71.57	(0.71)
RBOB	2.0585	(0.0092)
Crude/NG	24.02	0.38

METALS

Futures	Close	Change
Gold	1,194.40	(10.60)

EQUITIES

Exchange	Close	Change
DOW	26,385.28	(106.93)
S&P 500	-2,452.52	(9.59)

CURRENCY

Currency	Close	Change
EUR/USD	1.1678	(0.0061)
USD/CND	1.2405	0.0013

12 MONTH CANDLESTICK (WEEKLY)



Contact Us



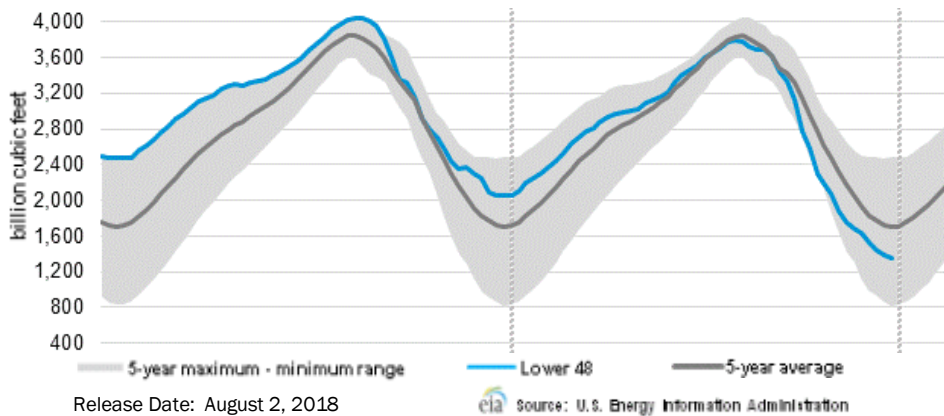
Mansfield Energy Corp
1025 Airport Pkwy
Gainesville, GA 30501
www.mansfield.energy
info@mansfieldoil.com

Phone: (800) 695-6626



NATURAL GAS NEWS

WEEKLY GAS IN UNDERGROUND STORAGE WITH 5-YR RANGE



Rig Count

Report Date: September 21, 2018

	Total	Change
US -	1,053	(2)
CN -	197	(29)

EIA Weekly NG Storage Actual and Surveys for September 21, 2018

Released September 20, 2018
 Range — +56 to +76
 PIRA— +82
 CITI — +94
 Reuters — +85

EIA ACTUAL — +86

Total Working Gas In Storage

2,722 BCF

+86 BCF (LAST WEEK)
 (672) BCF (LAST YEAR)
 (586) BCF (5-YR AVG)

U.S. Natural Gas Supply Gas Week 9/13 — 9/19

Average daily values (BCF/d):
 Last Year (BCF/d)
 Dry Production — +73.7
 Total Supply — +79.3
 Last Week (BCF/d)
 Dry Production — +83.2
 Total Supply — +87.8

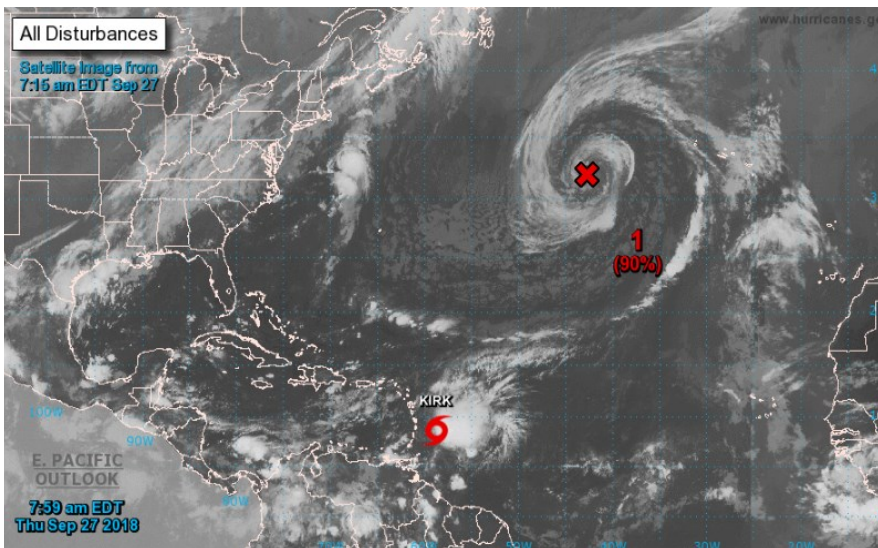
[NEXT REPORT ON Sept 28]

U.S. Natural Gas Demand Gas Week 9/13 — 9/19

Average daily values (BCF/d):
 Last Year (BCF/d)
 Power — +29.3
 Total Demand — +69.2
 Last Week (BCF/d)
 Power — +31.2
 Total Demand — +74.9

[NEXT REPORT ON Sept 28]

TROPICAL STORM ACTIVITY— ATLANTIC



Tropical Weather Outlook

NWS National Hurricane Center Miami FL

800 AM EDT Thu Sep 27 2018

For the North Atlantic...Caribbean Sea and the Gulf of Mexico:

The National Hurricane Center is issuing advisories on Tropical

Storm Kirk, located a couple of hundred miles east of the Lesser

Antilles.

1. Post-Tropical Cyclone Leslie, located over the central Atlantic

Ocean several hundred miles west of the Azores, remains a powerful

non-tropical low with hurricane-force winds. The associated shower

activity is gradually becoming more organized, and Leslie is

expected to again become a subtropical storm, or possibly a tropical

storm, later today or Friday while it moves west-southwestward at

about 10 mph over the north-central Atlantic. For more information

on this system, see High Seas Forecasts issued by the National

Weather Service.

* Formation chance through 48 hours...high...90 percent.

* Formation chance through 5 days...high...90 percent.

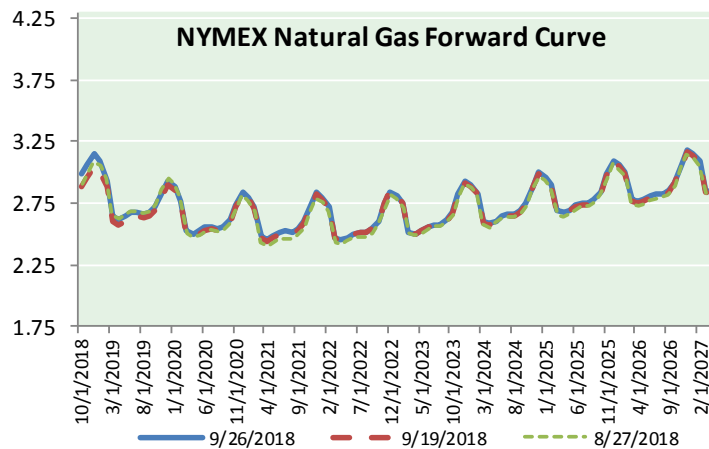
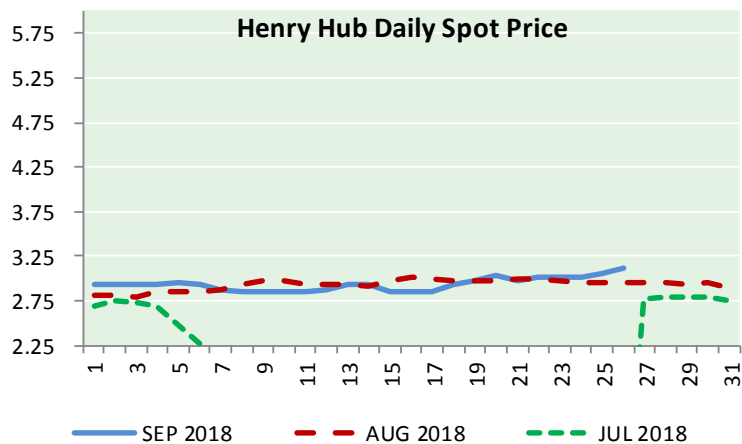
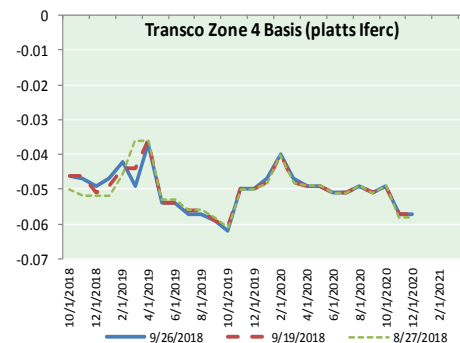
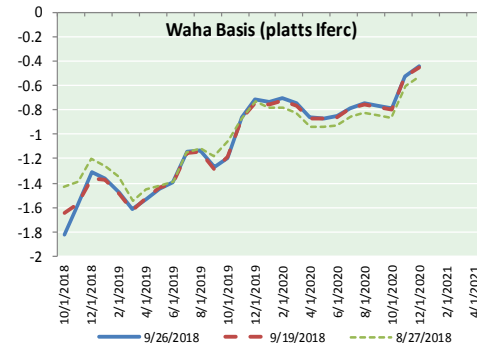
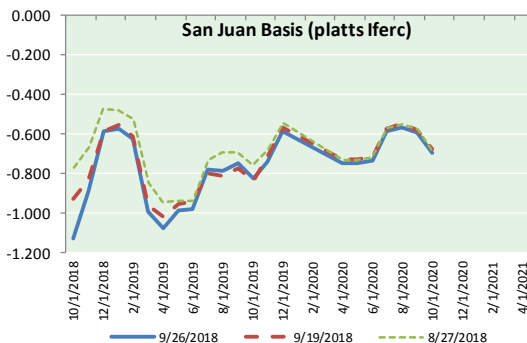
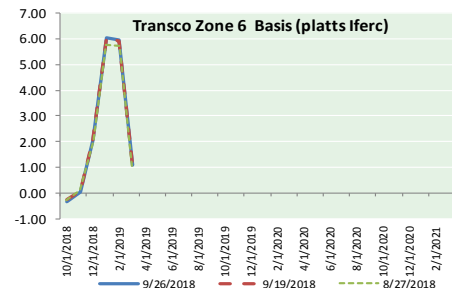
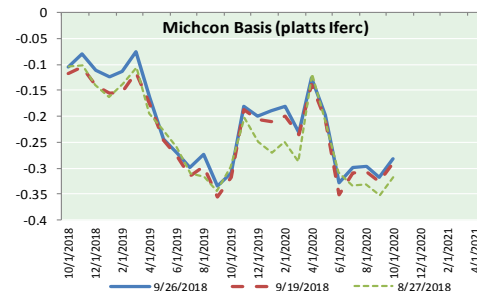
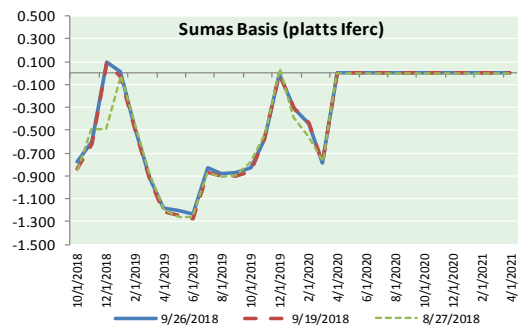
High Seas Forecasts issued by the National Weather Service can be

found under AWIPS header NFDHSFAT1, WMO header FZNT01 KWBC, and

on the Web at <https://ocean.weather.gov/shtml/NFDHSFAT1.shtml>.



NATURAL GAS BASIS FUTURES, HENRY HUB SPOT PRICES, AND FORWARD CURVE



NYMEX WTI Delivery

Month Average (\$/bbl)

(Excluding Weekends and Holidays)

Month: September 2018

Day	Price	Day	Price
1		16	
2	17	17	68.91
3	18	18	69.85
4	69.87	19	71.12
5	68.72	20	70.80
6	67.77	21	70.78
7	67.75	22	
8		23	
9		24	72.08
10	67.54	25	72.28
11	69.25	26	71.57
12	70.37	27	
13	68.59	28	
14	68.99	29	
15		30	

Average (Sep) 69.7788
(through 09/26/2018)

Average (Aug) 67.8452

Average (Jul) 70.5819

CME NG Option Prices

ATM Call

Month	Strike	Close	Imp	Vol
Dec-18				
Jan-19	3.100	0.132		28.1
Feb-19				
Mar-19				
Apr-19				

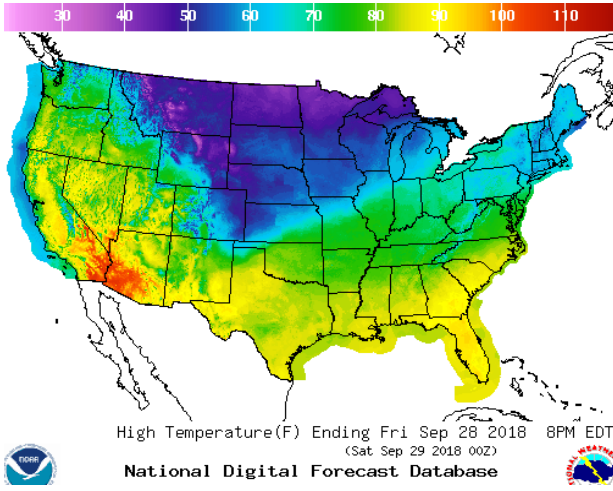
CME NG Option Prices

ATM Put

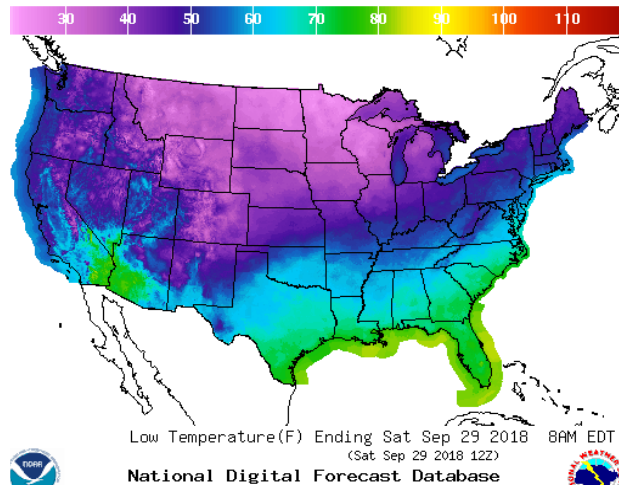
Month	Strike	Close	Imp	Vol
Dec-18				
Jan-19	3.100	0.173		31.9
Feb-19				
Mar-19				
Apr-19				

WEATHER – HIGH / LOW TEMPERATURE TOMORROW

HIGH Temperature

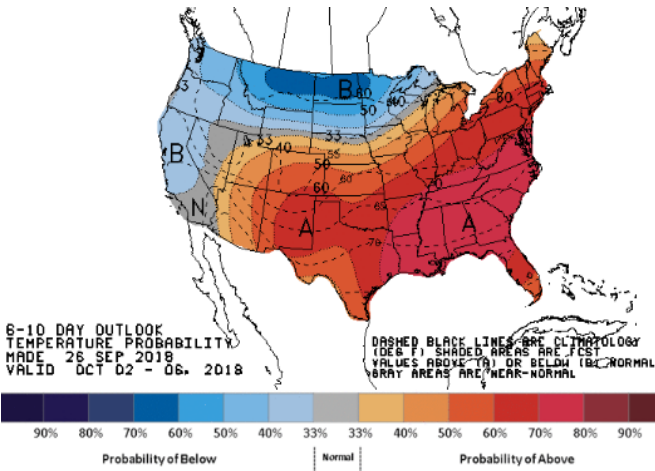


LOW Temperature

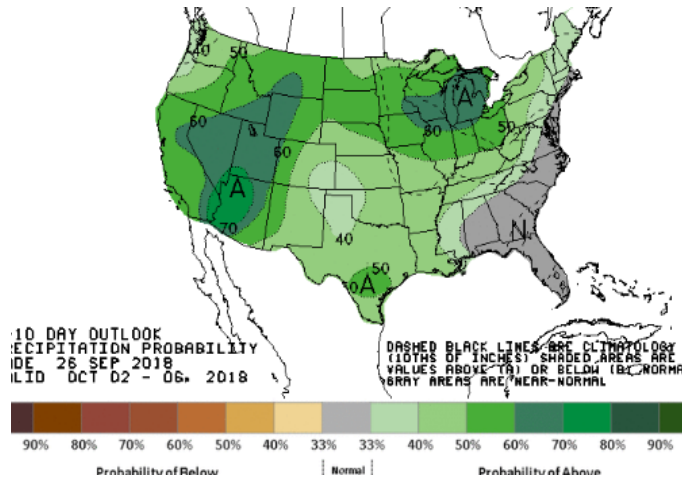


WEATHER – 6 TO 10 DAY OUTLOOK – NOAA

Temperature

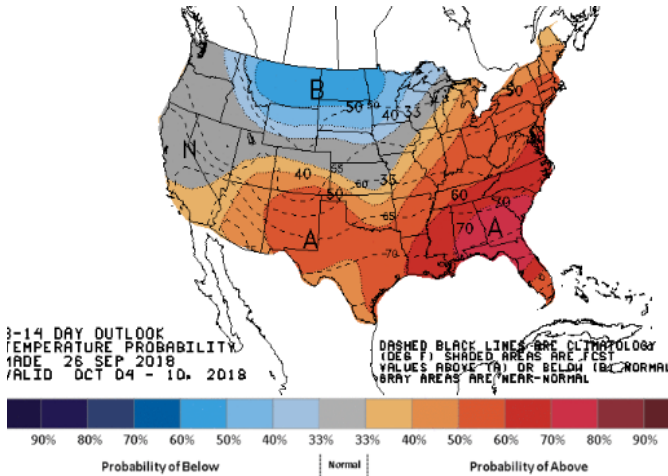


Precipitation

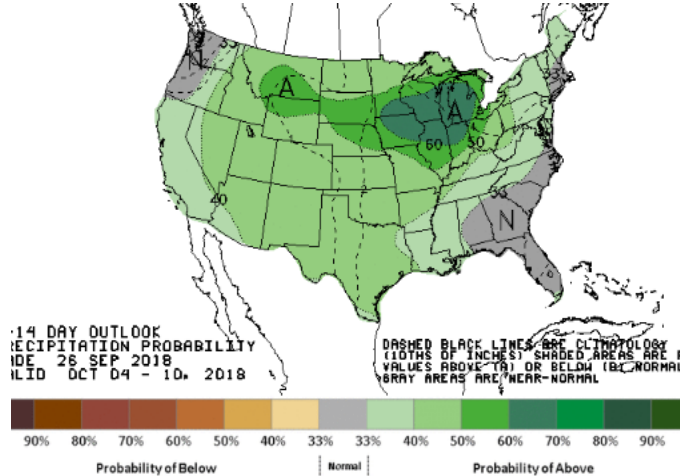


WEATHER – 8 TO 14 DAY OUTLOOK – NOAA

Temperature



Precipitation

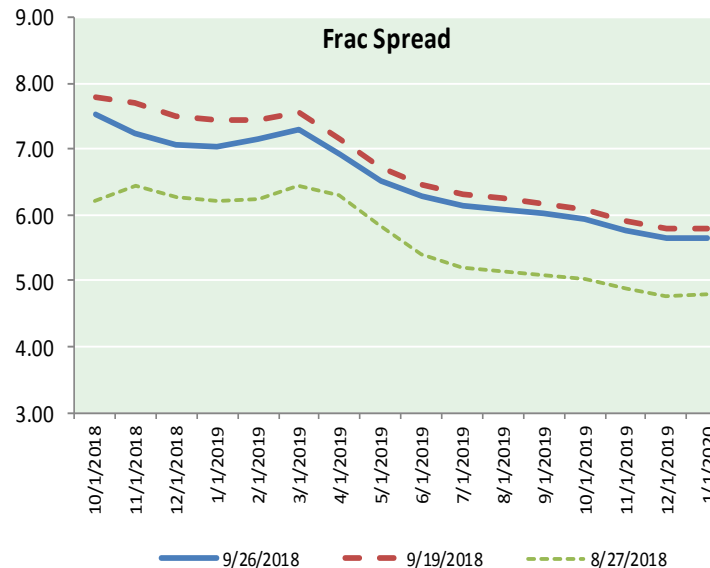
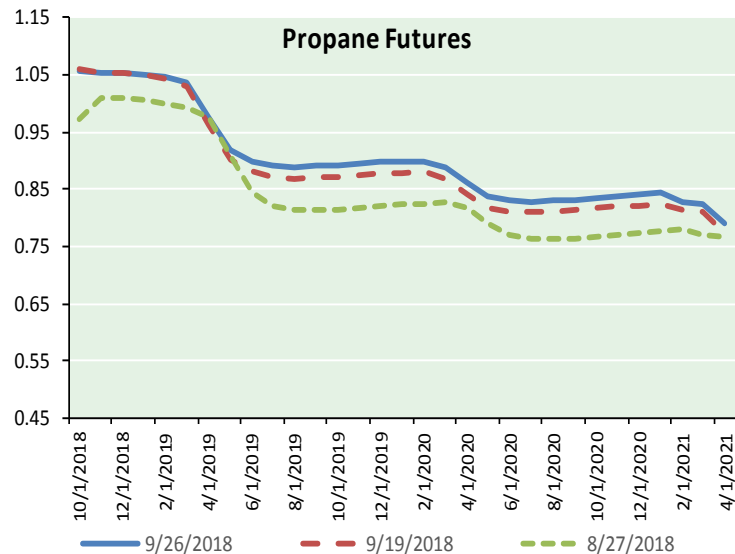
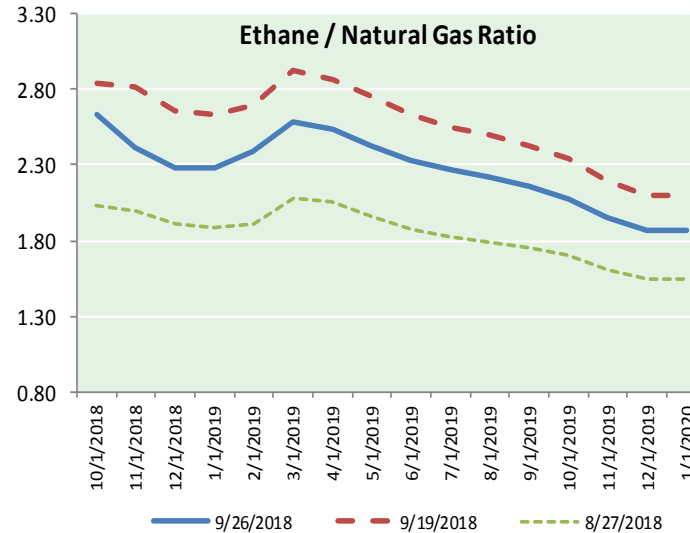
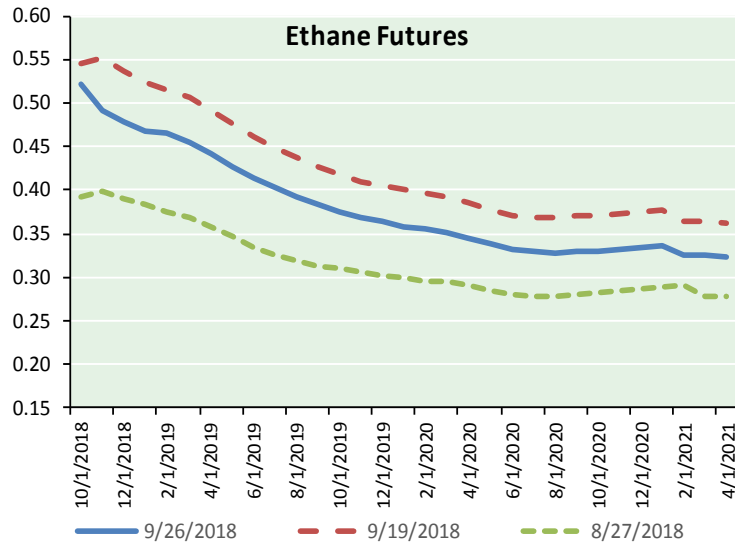


NATURAL GAS NEWS



ETHANE FUTURES, NG/ETHANE RATIO, PROPANE FUTURES, AND THE FRAC SPREAD

CME Future Prices



Month	Close	Change
Oct-18	0.521	0.003
Nov-18	0.491	0.027
Dec-18	0.478	0.025
Jan-19	0.468	0.023
Feb-19	0.465	0.021
Mar-19	0.455	0.020
Apr-19	0.441	0.020
May-19	0.426	0.020
Jun-19	0.414	0.019
Jul-19	0.402	0.017
Aug-19	0.392	0.015
Sep-19	0.383	0.015
1YR Strip	0.445	0.019

CME Future Prices
Propane (C3)
Non-LDH— Mont Belvieu

Month	Close	Change
Oct-18	1.058	(0.000)
Nov-18	1.054	(0.004)
Dec-18	1.054	(0.004)
Jan-19	1.052	(0.004)
Feb-19	1.047	(0.005)
Mar-19	1.037	(0.006)
Apr-19	0.975	(0.007)
May-19	0.920	(0.009)
Jun-19	0.900	(0.010)
Jul-19	0.891	(0.011)
Aug-19	0.890	(0.011)
Sep-19	0.890	(0.011)
1YR Strip	0.981	(0.007)

NATURAL GAS NEWS



**Prompt WTI (CL) Crude
Daily Sentiment**

BULLISH



RESISTANCE
72.14 & 72.72
SUPPORT
71.23 & 70.90

FOLLOW US ON TWITTER:



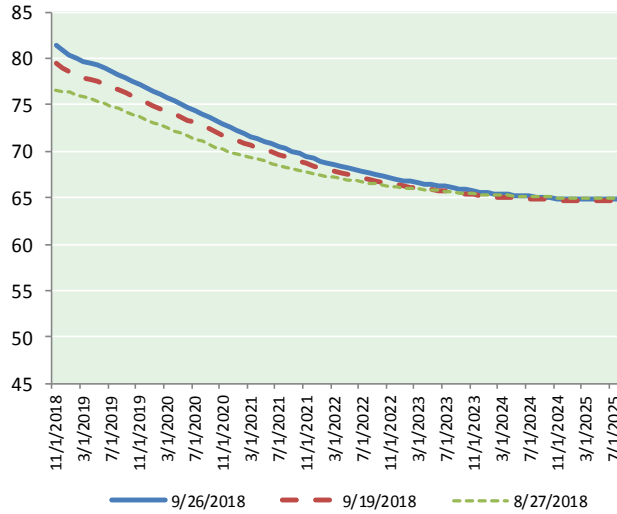
@MPG_NatGasNews

NYMEX Brent (BZ)

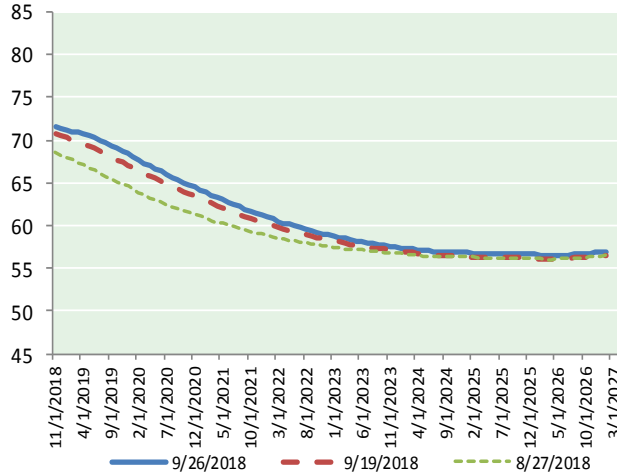
Futures

Month	Close	Change
Nov-18	71.57	(0.71)
Dec-18	71.41	(0.69)
Jan-19	71.25	(0.66)
Feb-19	71.06	(0.63)
Mar-19	70.90	(0.63)
Apr-19	70.71	(0.59)
May-19	70.50	(0.57)
Jun-19	70.27	(0.53)
Jul-19	69.97	(0.51)
Aug-19	69.66	(0.46)
Sep-19	69.33	(0.44)
Oct-19	69.02	(0.41)
Nov-19	68.70	(0.39)
Dec-19	68.39	(0.36)
Jan-20	68.00	(0.35)
Feb-20	67.63	(0.34)
Mar-20	67.28	(0.32)
Apr-20	66.94	(0.31)
May-20	66.62	(0.30)
Jun-20	66.32	(0.28)
Jul-20	65.96	(0.28)
Aug-20	65.63	(0.27)
Sep-20	65.32	(0.26)
Oct-20	65.03	(0.25)
1YR Strip 2018	70.47	(0.57)
2018	71.49	(0.70)
5YR Strip	63.68	(0.32)

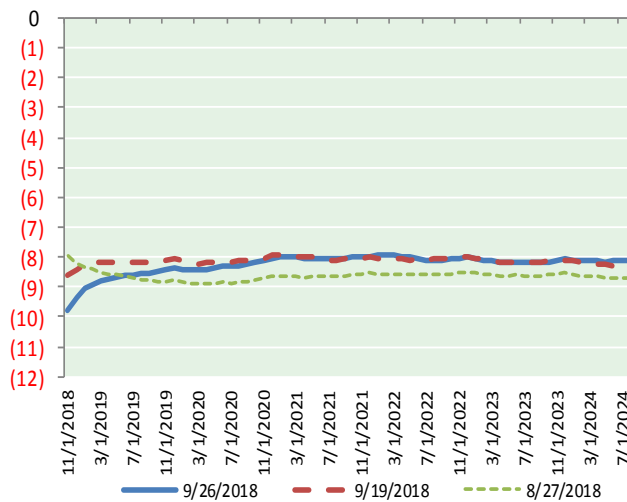
BRENT CRUDE FORWARD CURVE



WTI CRUDE FORWARD CURVE



WTI-BRENT SPREAD



FRAC Spread

Specifications

Ethane : 42% 66,500 btu/g
Propane: 28% 90,830 btu/g
Butane: 11% 102,916 btu/g
Iso-Butane: 6% 98,935 btu/g
Natural Gasoline: 13%
115,021 btu/g

Prompt NGL Futures

	Oct-18	Close	Change
Butane	1.246	(0.000)	
Iso-Butane	1.384	(0.000)	
Nat Gasoline	1.570	(0.003)	

NYMEX WTI (CL) Futures

Month	Close	Change
Nov-18	81.34	(0.53)
Dec-18	80.79	(0.47)
Jan-19	80.31	(0.47)
Feb-19	79.96	(0.47)
Mar-19	79.70	(0.45)
Apr-19	79.46	(0.43)
May-19	79.20	(0.41)
Jun-19	78.87	(0.39)
Jul-19	78.55	(0.37)
Aug-19	78.21	(0.35)
Sep-19	77.85	(0.32)
Oct-19	77.49	(0.30)
Nov-19	77.15	(0.29)
Dec-19	76.76	(0.28)
Jan-20	76.41	(0.28)
Feb-20	76.07	(0.26)
Mar-20	75.72	(0.25)
Apr-20	75.35	(0.24)
May-20	75.00	(0.22)
Jun-20	74.65	(0.21)
Jul-20	74.29	(0.20)
Aug-20	73.93	(0.19)
Sep-20	73.57	(0.18)
Oct-20	73.22	(0.16)
1YR Strip 2018	79.31	(0.41)
2018	81.07	(0.50)
5YR Strip	71.93	(0.19)