

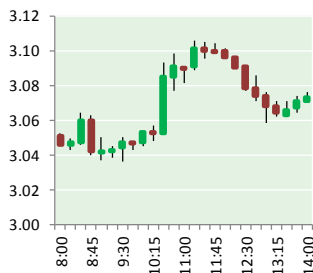
NATURAL GAS



NEWS

SEPTEMBER 15, 2017

Prior Day's NYMEX Sep-17 Contract (CT)



NYMEX NG Futures

Month	Close	Change
Oct-17	3.070	0.012
Nov-17	3.127	0.009
Dec-17	3.271	0.005
Jan-18	3.371	0.002
Feb-18	3.370	0.000
Mar-18	3.320	(0.001)
Apr-18	2.960	(0.006)
May-18	2.922	(0.006)
Jun-18	2.946	(0.007)
Jul-18	2.970	(0.007)
Aug-18	2.973	(0.007)
Sep-18	2.950	(0.007)
Oct-18	2.972	(0.006)
Nov-18	3.021	(0.006)
Dec-18	3.152	(0.003)
Jan-19	3.237	(0.002)
Feb-19	3.215	0.002
Mar-19	3.148	0.004
Apr-19	2.770	0.008
May-19	2.738	0.009
Jun-19	2.761	0.009
Jul-19	2.783	0.009
Aug-19	2.787	0.009
Sep-19	2.773	0.009
1YR Strip	3.104	(0.001)
2017	3.156	0.009
5YR Strip	2.905	0.010

IN THE NEWS

New Jersey Pinelands Panel OKs Another Natural Gas Pipeline — The Seattle Times reports: A government panel on Thursday approved a plan to construct another natural gas pipeline in New Jersey's Pinelands. The New Jersey Pinelands Commission' vote

- **New Jersey Pinelands Panel OKs Another Natural Gas Pipeline**
- **U.S. Natural Gas Futures Turn Positive After Storage Data**

was 8 to 4, with one abstention. The panel's director in 2015 had unilaterally approved the application, but courts ruled the full commission must vote. The Sierra Club and other groups challenged the New Jersey Natural Gas project, known as the southern reliability link, saying the 30-mile (48-kilometer) pipeline would destroy environmentally sensitive land and threaten communities along its route in Burlington, Ocean and Monmouth counties. New Jersey Natural Gas said the project would provide a backup source of natural gas to more than 1 million people. For more visit seattletimes.com or click <http://bit.ly/2f0fZfy>

U.S. Natural Gas Futures Turn Positive After Storage Data - Investing.com reports: U.S. natural gas futures initially turned around and registered gains in North American trade on Thursday, despite data showed that natural gas supplies in storage in the U.S. rose more than expected last week. The U.S. EIA said in its weekly report that natural gas storage in the U.S. rose by 91 billion cubic feet in the week ended September 8, while analysts had forecast a smaller increase of just 85 billion. Total U.S. natural gas storage stood at 3.311 trillion cubic feet, 5.1% lower than levels at this time a year ago and 1.3% above the five-year average for this time of year. Natural gas prices have gained more than 5% so far this week after Hurricane Irma struck the U.S. southeast with less force than once feared, easing worries over a hit to energy demand. For more on this story visit investing.com or click the following link <http://bit.ly/2h84iaZ>

12 MONTH CANDLESTICK (WEEKLY)



Prompt Natural Gas (NG) Daily Sentiment

BULLISH



RESISTANCE

3.11 & 3.15

SUPPORT

3.00 & 2.93

Trading Summary

NATURAL GAS

Futures	Close	Change
NG	3.070	0.012
Volume	495,524	(487,190)
Open Int.	1,334,597	690

CRUDE AND GASOLINE

Futures	Close	Change
Crude	49.89	0.59
RBOB	1.6287	(0.0186)
Crude/NG	16.25	0.13

METALS

Futures	Close	Change
Gold	1,325.40	(1.90)

EQUITIES

Exchange	Close	Change
DOW	22,203.48	45.30
S&P 500	2,495.62	(2.75)

CURRENCY

Currency	Close	Change
EUR/USD	1.1921	0.0035
USD/CND	1.2158	(0.0017)

Contact Us



Mansfield Energy Corp
1025 Airport Pkwy
Gainesville, GA 30501

www.mansfield.energy

info@mansfieldoil.com

Phone: (800) 695-6626

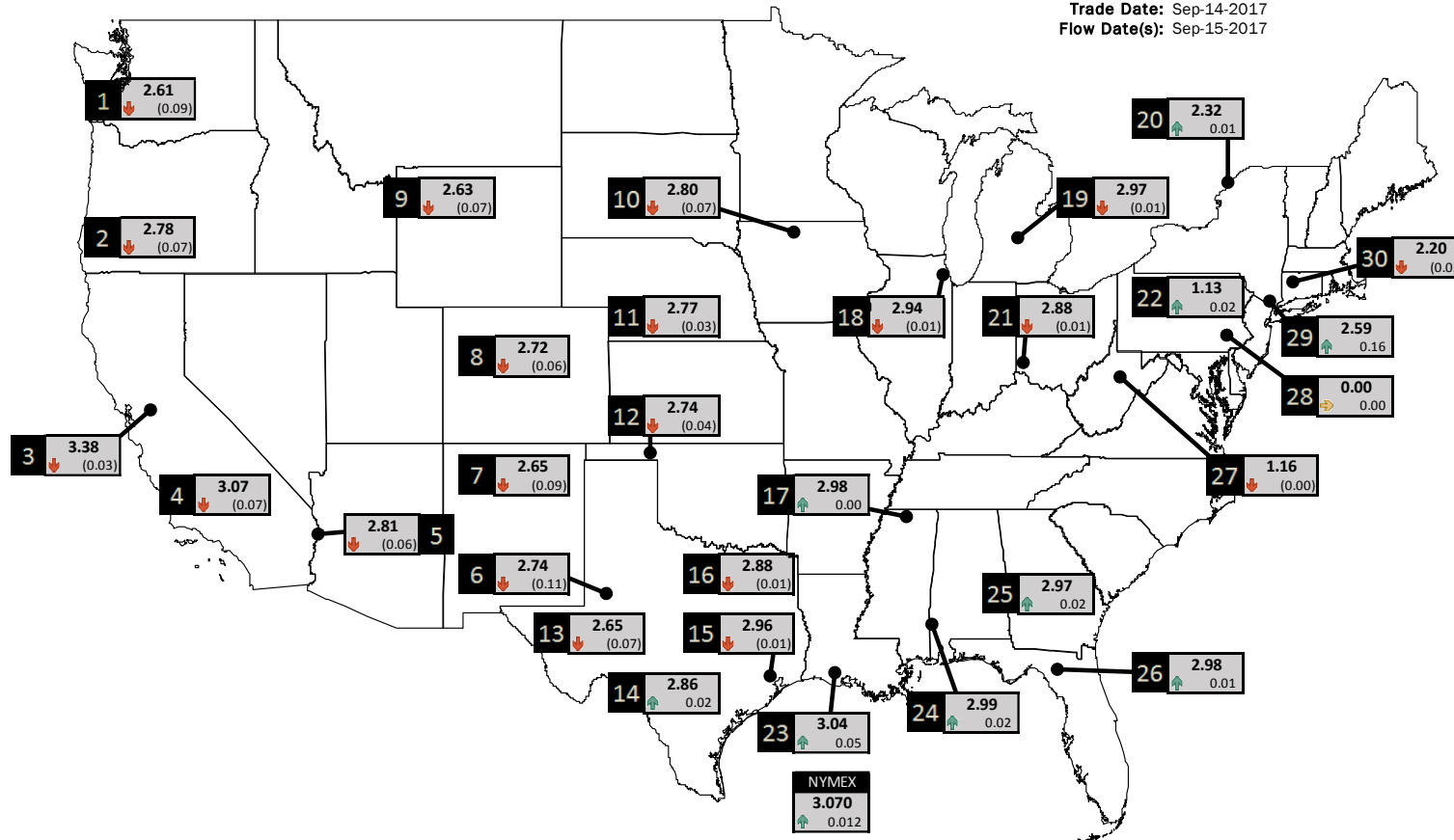


NATURAL GAS NEWS



PHYSICAL SPOT NATURAL GAS PRICE MAP

Trade Date: Sep-14-2017
Flow Date(s): Sep-15-2017



ID	DAILY INDEX	PRICE	CHANGE
1	Stanfield	2.61	(0.09)
2	Malin	2.78	(0.07)
3	PG&E - Citygate	3.38	(0.03)
4	SoCal-Citygate	3.07	(0.07)
5	SoCal Border	2.81	(0.06)
6	Waha	2.74	(0.11)
7	EPSJ Blanco Pool	2.65	(0.09)
8	Opal Plant Tailgate	2.72	(0.06)
9	NWP-Wyoming	2.63	(0.07)
10	Ventura	2.80	(0.07)

ID	DAILY INDEX	PRICE	CHANGE
11	NGPL-Midcont Pool	2.77	(0.03)
12	Panhandle	2.74	(0.04)
13	EP-Permian	2.65	(0.07)
14	TGP-ZO	2.86	0.02
15	Houston Ship Channel	2.96	(0.01)
16	NGPL-TXOK	2.88	(0.01)
17	TETCO-M1 30	2.98	0.00
18	Chicago Citygates	2.94	(0.01)
19	Michcon	2.97	(0.01)
20	Iroquois (into)	2.32	0.01

ID	DAILY INDEX	PRICE	CHANGE
21	REX E-ANR	2.88	(0.01)
22	Leidy-Transco	1.13	0.02
23	Henry	3.04	0.05
24	Transco-85	2.99	0.02
25	Sonat-ZO South	2.97	0.02
26	FGT-Z3	2.98	0.01
27	Dominion-South	1.16	(0.00)
28	Transco-Z6 (non-NY)	0.00	0.00
29	Transco-Z6 (NY)	2.59	0.16
30	Iroquois-Z2	2.20	(0.03)

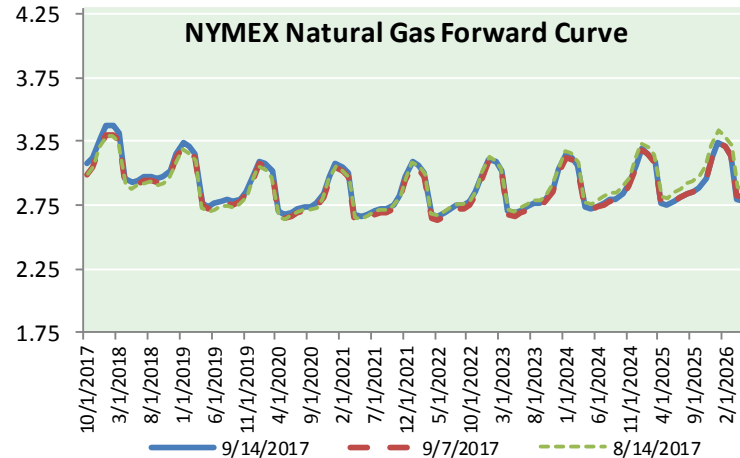
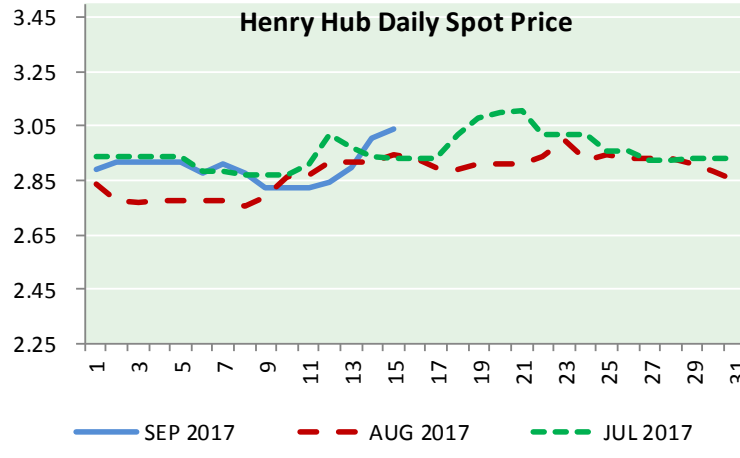
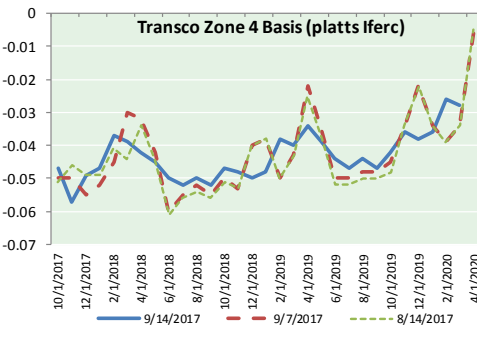
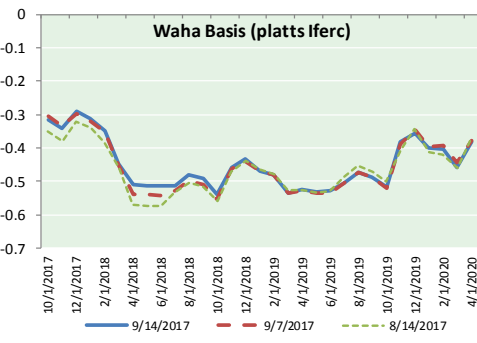
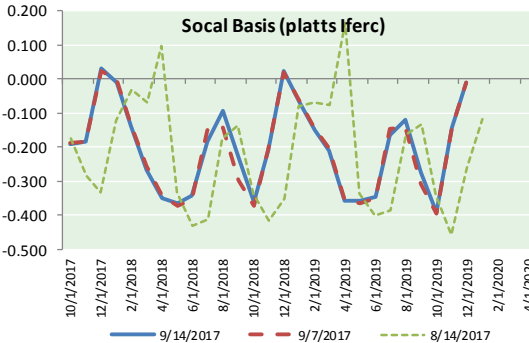
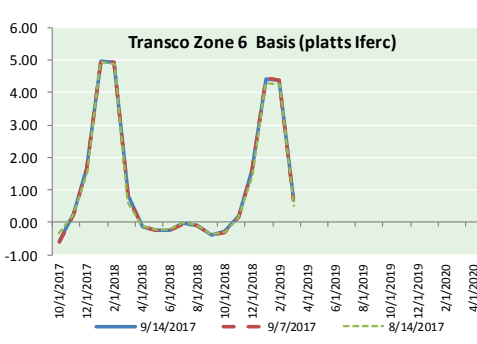
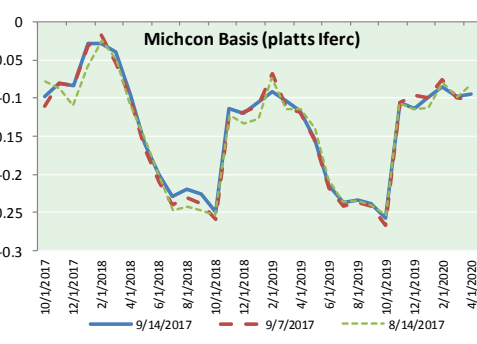
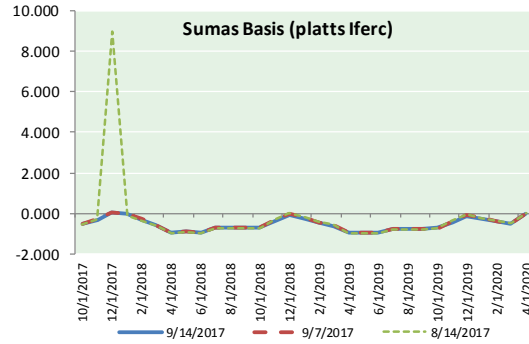


DISCLAIMER: The content herein is privileged and confidential. Content is presented for informational purposes and is a reflection of the market opinions of its authors subject to change without notice. Content is derived from sources believed to be accurate at the time of release but carries no guarantee of accuracy or completeness. Mansfield Energy Corp and its clients may or may not take positions similar or opposite those discussed herein. The reader should realize that the trading of commodities involves risk, and the reader assumes all responsibility for the risk of financial losses.



NATURAL GAS NEWS

NATURAL GAS BASIS FUTURES, HENRY HUB SPOT PRICES, AND FORWARD CURVE



CME NG Option Prices

ATM Call

Month	Strike	Close	Imp Vol
Oct-17	3.050	0.068	28.1
Nov-17	3.100	0.153	33.7
Dec-17	3.250	0.207	33.7
Jan-18	3.350	0.276	37.5
Feb-18	3.350	0.358	43.1
Mar-18			
Apr-18			
May-18			
Jun-18			
Jul-18			
Aug-18			
Sep-18			
Oct-18			
Nov-18			
Dec-18			
Jan-19			
Feb-19			

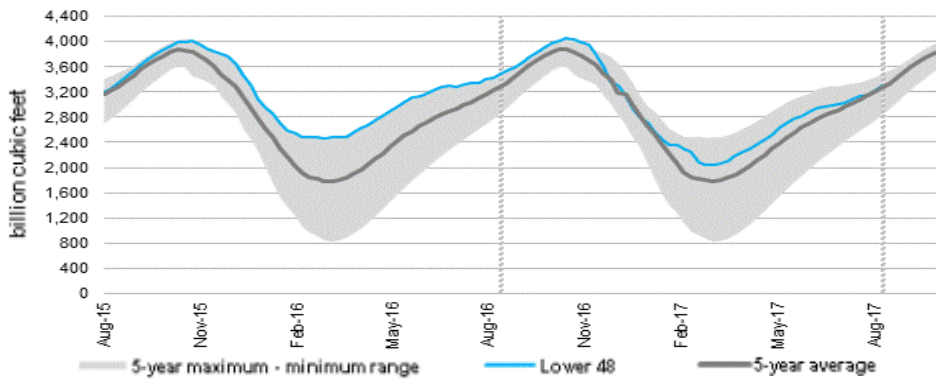
CME NG Option Prices

ATM Put

Month	Strike	Close	Imp Vol
Oct-17	3.050	0.081	41.2
Nov-17	3.100	0.130	33.7
Dec-17	3.250	0.189	33.7
Jan-18	3.350	0.259	37.5
Feb-18	3.350		
Mar-18			
Apr-18			
May-18			
Jun-18			
Jul-18			
Aug-18			
Sep-18			
Oct-18			
Nov-18			
Dec-18			
Jan-19			
Feb-19			

NATURAL GAS NEWS

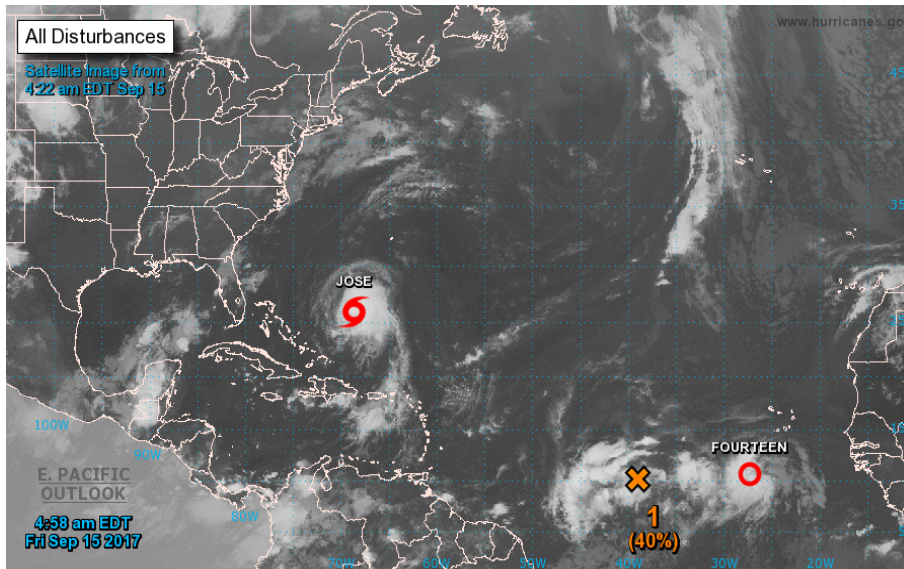
WEEKLY GAS IN UNDERGROUND STORAGE WITH 5-YR RANGE



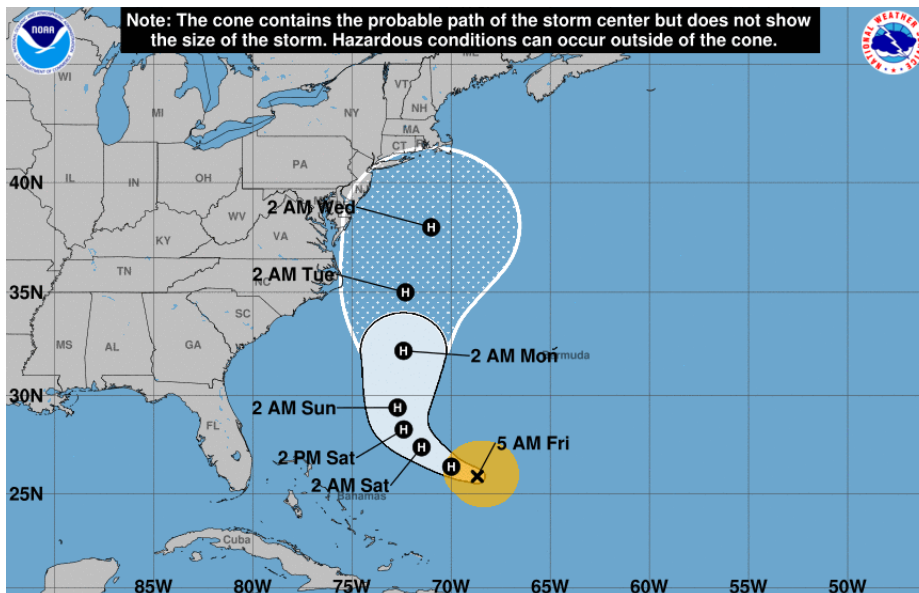
Release Date: September 14, 2017

Source: U.S. Energy Information Administration

TROPICAL STORM ACTIVITY— ATLANTIC



JOSE



Rig Count

Report Date: September 8, 2017

	Total	Change
US -	944	+1
CN -	202	+1

EIA Weekly NG Storage Actual and Surveys for September 7th, 2017 Released September 14, 2017

PIRA — +90
ARM — +89
Reuters — +85

EIA ACTUAL — +91

Total Working Gas In Storage

3,311 BCF

+91 BCF (LAST WEEK)
(179) BCF (LAST YEAR)
+43 BCF (5-YR AVG)

U.S. Natural Gas Supply Gas Week 9/7 - 9/13

Average daily values (BCF/D):
Last Year (BCF/d)
Dry Production — +72.0
Total Supply — +78.0
Last Week (BCF/d)
Dry Production — +73.7
Total Supply — +79.2

[NEXT REPORT ON SEP 21]

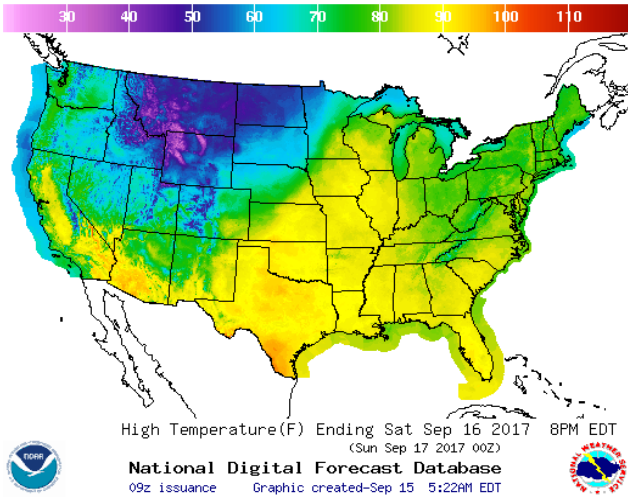
U.S. Natural Gas Demand Gas Week 9/7 - 9/13

Average daily values (BCF/D):
Last Year (BCF/d)
Power — +33.9
Total Demand — +71.8
Last Week (BCF/d)
Power — +29.4
Total Demand — +66.5

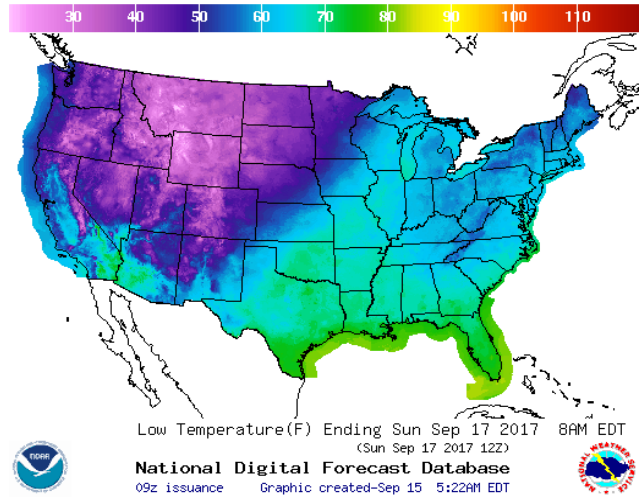
[NEXT REPORT ON SEP 21]

WEATHER – HIGH / LOW TEMPERATURE SATURDAY

HIGH Temperature

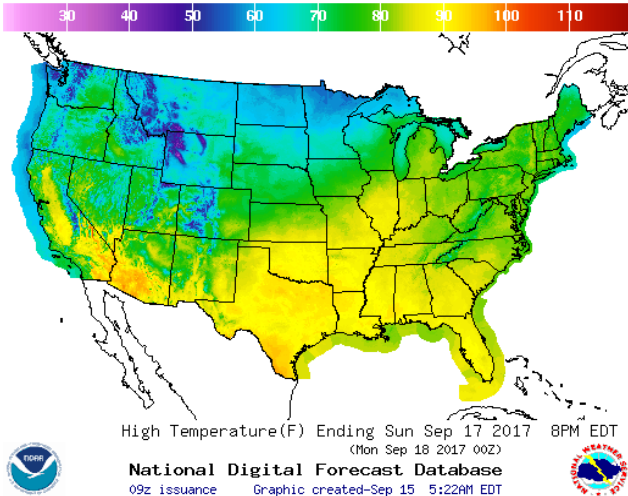


LOW Temperature

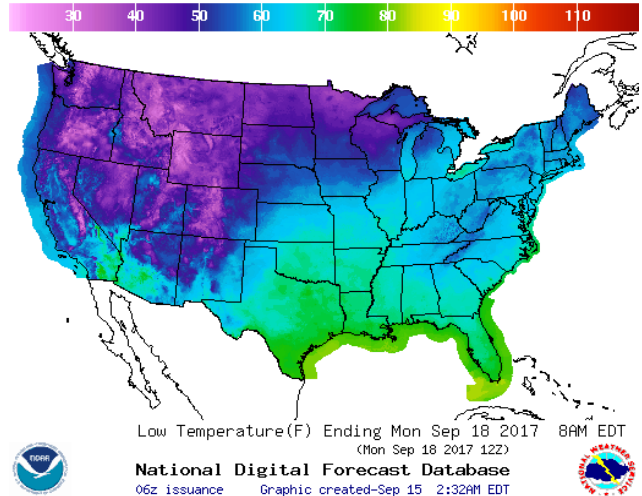


WEATHER – HIGH / LOW TEMPERATURE SUNDAY

HIGH Temperature

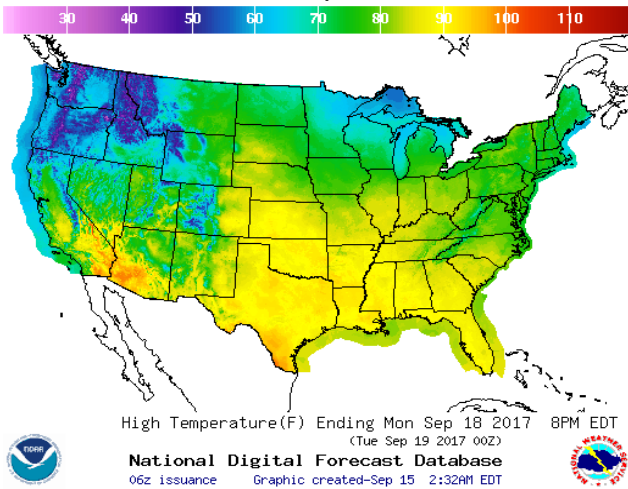


LOW Temperature

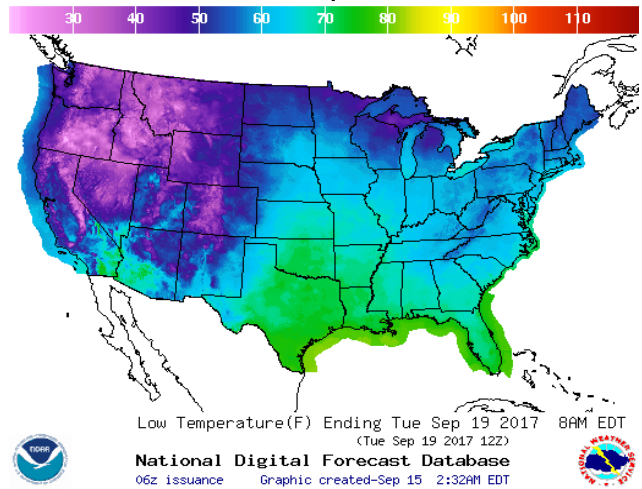


WEATHER – HIGH / LOW TEMPERATURE MONDAY

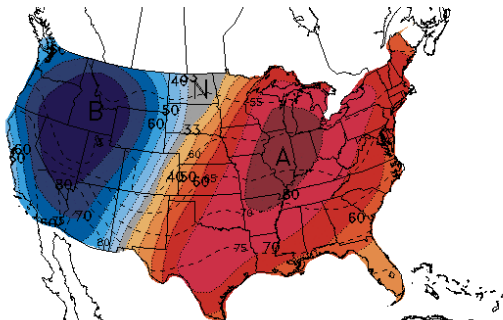
HIGH Temperature



LOW Temperature

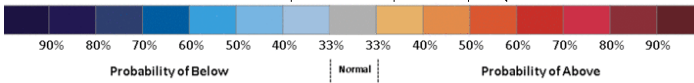


WEATHER — 6 TO 10 DAY OUTLOOK — NOAA
Temperature

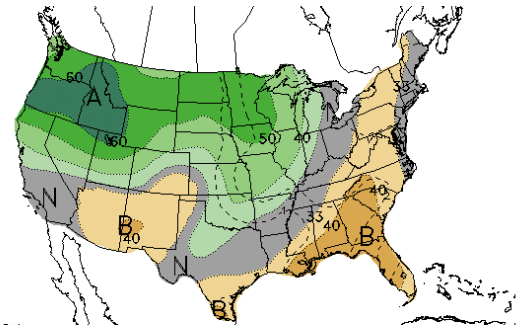


6-10 DAY OUTLOOK
 TEMPERATURE PROBABILITY
 MADE 14 SEP 2017
 VALID SEP 20 - 24, 2017

DASHED BLACK LINES ARE CLIMATOLOGY (DEG F) SHADED AREAS ARE FCST VALUES ABOVE (A) OR BELOW (B) NORMAL GRAY AREAS ARE NEAR-NORMAL

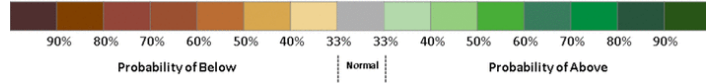


Precipitation

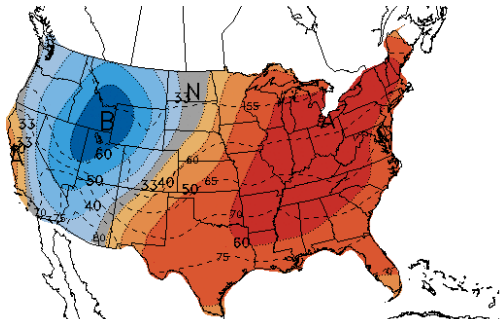


6-10 DAY OUTLOOK
 PRECIPITATION PROBABILITY
 MADE 14 SEP 2017
 VALID SEP 20 - 24, 2017

DASHED BLACK LINES ARE CLIMATOLOGY (10THS OF INCHES) SHADED AREAS ARE FC VALUES ABOVE (A) OR BELOW (B) NORMAL GRAY AREAS ARE NEAR-NORMAL

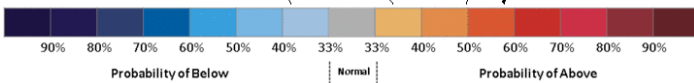


WEATHER — 8 TO 14 DAY OUTLOOK — NOAA
Temperature

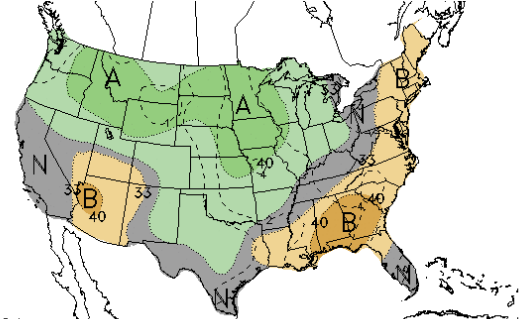


8-14 DAY OUTLOOK
 TEMPERATURE PROBABILITY
 MADE 14 SEP 2017
 VALID SEP 22 - 28, 2017

DASHED BLACK LINES ARE CLIMATOLOGY (DEG F) SHADED AREAS ARE FCST VALUES ABOVE (A) OR BELOW (B) NORMAL GRAY AREAS ARE NEAR-NORMAL

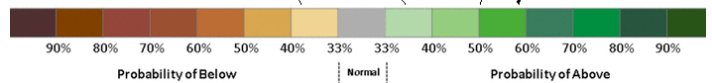


Precipitation

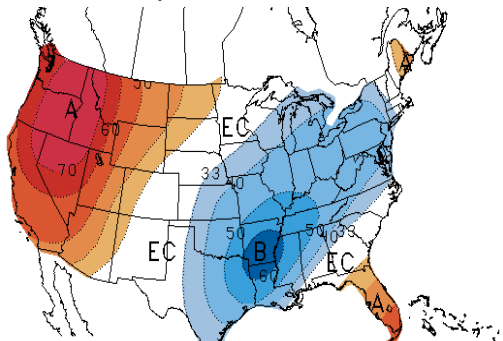


8-14 DAY OUTLOOK
 PRECIPITATION PROBABILITY
 MADE 14 SEP 2017
 VALID SEP 22 - 28, 2017

DASHED BLACK LINES ARE CLIMATOLOGY (10THS OF INCHES) SHADED AREAS ARE FC VALUES ABOVE (A) OR BELOW (B) NORMAL GRAY AREAS ARE NEAR-NORMAL



WEATHER — 30 DAY OUTLOOK — NOAA
Temperature

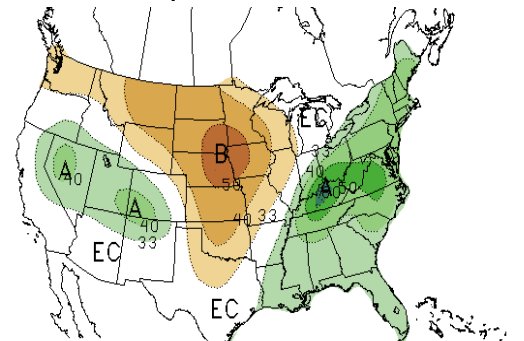


ONE-MONTH OUTLOOK
 TEMPERATURE PROBABILITY
 0.0 MONTH LEAD
 VALID SEP 2017
 MADE 31 AUG 2017

EC MEANS EQUAL CHANCES FOR A, N, B
 A MEANS ABOVE
 N MEANS NORMAL
 B MEANS BELOW

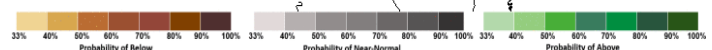


Precipitation



ONE-MONTH OUTLOOK
 PRECIPITATION PROBABILITY
 0.0 MONTH LEAD
 VALID SEP 2017
 MADE 31 AUG 2017

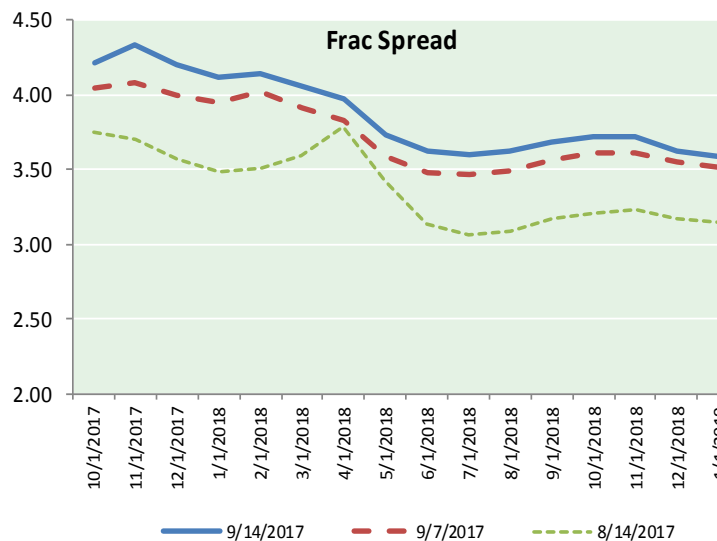
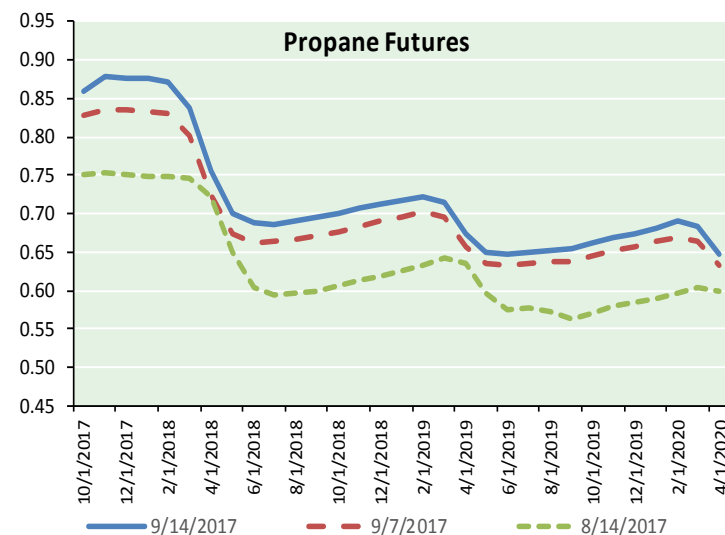
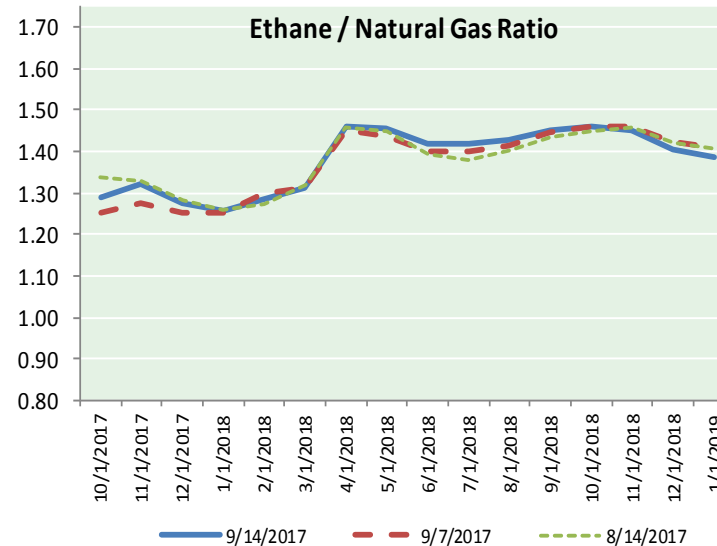
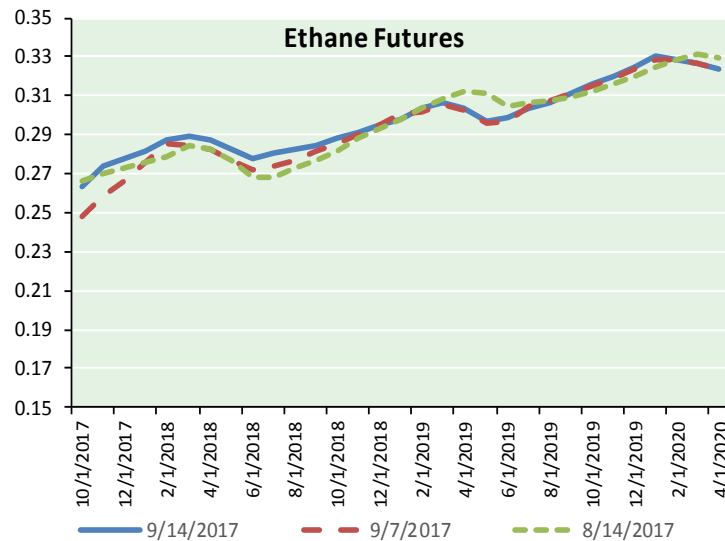
EC MEANS EQUAL CHANCES FOR A, N, B
 A MEANS ABOVE
 N MEANS NORMAL
 B MEANS BELOW



NATURAL GAS NEWS



ETHANE FUTURES, NG/ETHANE RATIO, PROPANE FUTURES, AND THE FRAC SPREAD



CME Future Prices

Ethane (C2)

Non-LDH— Mont Belvieu

Month	Close	Change
Oct-17	0.263	0.001
Nov-17	0.274	0.001
Dec-17	0.278	0.001
Jan-18	0.281	0.000
Feb-18	0.288	(0.000)
Mar-18	0.290	0.002
Apr-18	0.287	0.003
May-18	0.283	0.003
Jun-18	0.278	0.003
Jul-18	0.280	0.003
Aug-18	0.282	0.003
Sep-18	0.285	0.003

1YR Strip 0.281 0.002

CME Future Prices

Propane (C3)

Non-LDH— Mont Belvieu

Month	Close	Change
Oct-17	0.860	(0.000)
Nov-17	0.879	0.000
Dec-17	0.878	0.000
Jan-18	0.876	0.000
Feb-18	0.871	0.000
Mar-18	0.838	(0.002)
Apr-18	0.755	(0.001)
May-18	0.700	(0.001)
Jun-18	0.688	0.001
Jul-18	0.687	0.000
Aug-18	0.690	(0.001)
Sep-18	0.695	(0.001)

1YR Strip 0.785 (0.000)

NATURAL GAS NEWS



Prompt WTI (CL) Crude Daily Sentiment

BULLISH



RESISTANCE
50.54 & 51.20
SUPPORT
49.19 & 48.50

FOLLOW US ON TWITTER:



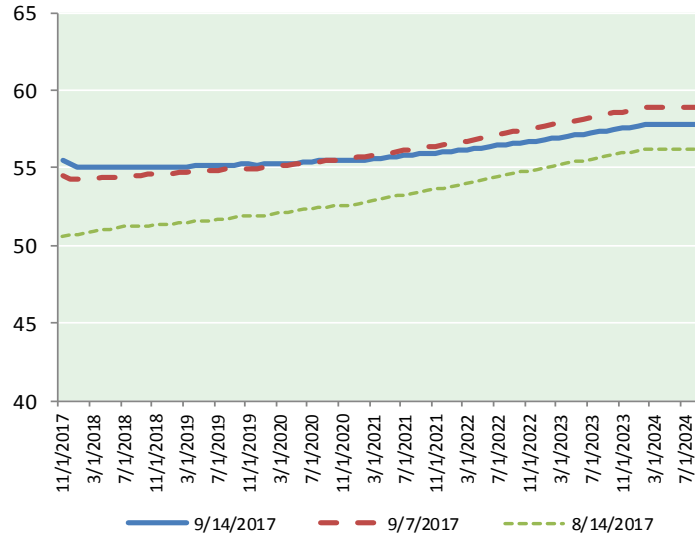
@MPG_NatGasNews

NYMEX Brent (BZ)

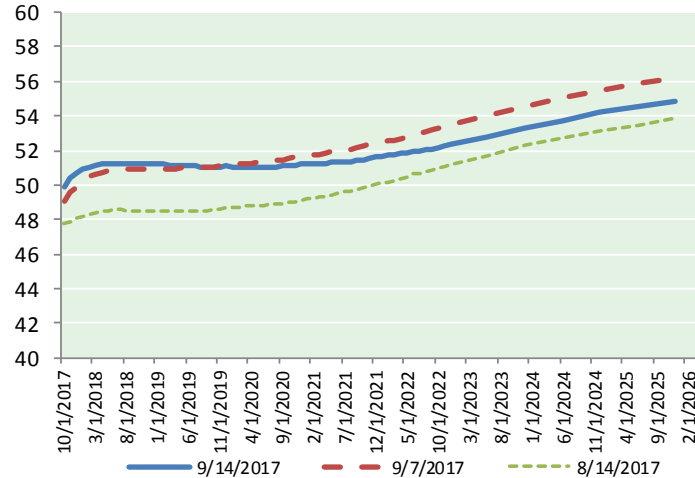
Futures

Month	Close	Change
Nov-17	55.47	0.31
Dec-17	55.22	0.33
Jan-18	55.09	0.35
Feb-18	55.04	0.36
Mar-18	55.03	0.38
Apr-18	55.02	0.39
May-18	55.01	0.39
Jun-18	55.00	0.38
Jul-18	55.03	0.37
Aug-18	55.04	0.35
Sep-18	55.03	0.34
Oct-18	55.04	0.34
Nov-18	55.06	0.34
Dec-18	55.08	0.34
Jan-19	55.07	0.33
Feb-19	55.09	0.33
Mar-19	55.10	0.32
Apr-19	55.15	0.32
May-19	55.14	0.31
Jun-19	55.11	0.31
Jul-19	55.17	0.32
Aug-19	55.17	0.32
Sep-19	55.20	0.32
Oct-19	55.24	0.32
1YR Strip	55.09	0.36
2017	55.35	0.32
5YR Strip	55.50	0.30

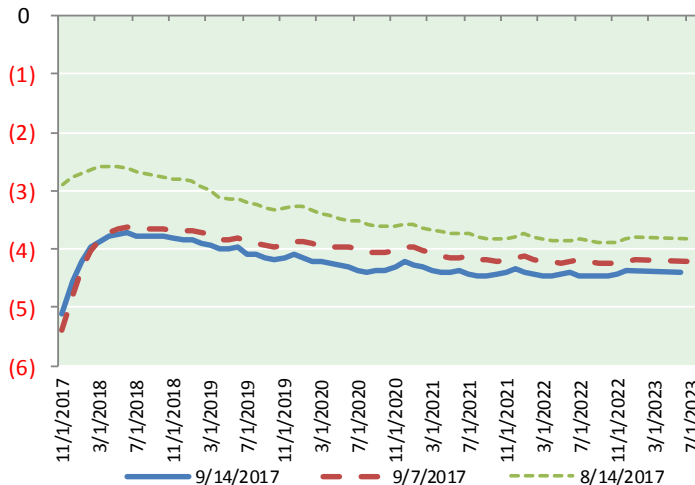
BRENT CRUDE FORWARD CURVE



WTI CRUDE FORWARD CURVE



WTI-BRENT SPREAD



FRAC Spread

Specifications

Ethane : 42%	66,500 btu/g
Propane: 28%	90,830 btu/g
Butane: 11%	102,916 btu/g
Iso-Butane: 6%	98,935 btu/g
Natural Gasoline: 13%	115,021 btu/g

Prompt NGL Futures

(\$/gallon)

	Oct-17	Close	Change
Butane	0.996	0.001	
Iso-Butane	0.991	0.001	
Nat Gasoline	1.147	0.008	

NYMEX WTI (CL) Futures

Month	Close	Change
Oct-17	49.89	0.59
Nov-17	50.35	0.60
Dec-17	50.66	0.56
Jan-18	50.89	0.54
Feb-18	51.06	0.53
Mar-18	51.17	0.51
Apr-18	51.23	0.49
May-18	51.26	0.48
Jun-18	51.27	0.47
Jul-18	51.26	0.46
Aug-18	51.25	0.44
Sep-18	51.25	0.43
Oct-18	51.25	0.42
Nov-18	51.25	0.41
Dec-18	51.25	0.39
Jan-19	51.22	0.38
Feb-19	51.19	0.37
Mar-19	51.16	0.36
Apr-19	51.15	0.35
May-19	51.13	0.33
Jun-19	51.13	0.32
Jul-19	51.09	0.30
Aug-19	51.07	0.29
Sep-19	51.05	0.28
1YR Strip	50.96	0.51
2017	50.30	0.58
5YR Strip	51.27	0.27