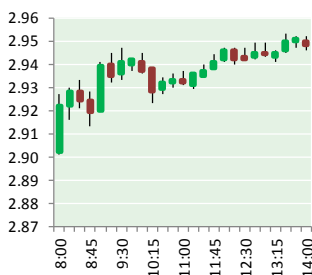


# NATURAL GAS



SEPTEMBER 12, 2017

## Prior Day's NYMEX Oct-17 Contract (CT)



## NYMEX NG Futures

Month	Close	Change
Oct-17	2.950	0.060
Nov-17	3.019	0.054
Dec-17	3.178	0.055
Jan-18	3.289	0.059
Feb-18	3.293	0.059
Mar-18	3.251	0.057
Apr-18	2.937	0.036
May-18	2.908	0.035
Jun-18	2.935	0.035
Jul-18	2.961	0.035
Aug-18	2.964	0.034
Sep-18	2.941	0.034
Oct-18	2.960	0.034
Nov-18	3.009	0.032
Dec-18	3.139	0.031
Jan-19	3.222	0.030
Feb-19	3.197	0.030
Mar-19	3.130	0.027
Apr-19	2.762	0.019
May-19	2.732	0.018
Jun-19	2.754	0.017
Jul-19	2.776	0.017
Aug-19	2.780	0.017
Sep-19	2.766	0.017
1YR Strip	3.052	0.046
2017	3.049	0.056
5YR Strip	2.887	0.022

## IN THE NEWS

Gas pipelines, LDCs still assessing Irma impacts — Platts reports: Operators of natural gas interstate pipeline systems and local distribution companies continued to assess the damage from Hurricane Irma on Monday morning. The storm, which slammed

- Gas pipelines, LDCs still assessing Irma impacts
- U.S. natural gas futures push higher as Irma loses strength

into Florida Sunday, caused significant damage throughout the entire state and crews were fanning out across a wide area Monday to assess damage to the gas infrastructure. Florida gas demand along with that of the overall Southeastern US declined sharply over the weekend as a result of Hurricane Irma, Platts Analytics Bentek Energy said. The largest concentrated impact came from Florida power burn, which declined 1.2 Bcf/d since Friday. Platts Analytics expects demand to continue to weaken in areas along the storm's path as Irma moves further inland along a northwestern path into Georgia and Alabama. Florida demand is likely to remain suppressed even after the storm passes through the state as power companies work to restore damage from the storm, Platts Analytics said. Florida Gas Zone 3 is likely to experience downward pressure in the wake of the weekend's demand destruction. For more on this story visit [platts.com](http://platts.com) or click the following link <http://bit.ly/2gZdrCu>

U.S. natural gas futures push higher as Irma loses strength – Investing.com reports: U.S. natural gas futures started the week on the front foot on Monday, after Hurricane Irma struck the U.S. southeast with less force than once feared, easing worries over a hit to energy demand. Oct17 futures saw a weekly loss of nearly 6% as traders began to react to the reality that higher summer demand for the commodity is coming to an end. Early market expectations for this week's storage data due on Thursday is for a build in a range between 72 and 83 billion cubic feet in the week ended September 8. For more visit [investing.com](http://investing.com) or click the following link <http://bit.ly/2eSeekp>

## 12 MONTH CANDLESTICK (WEEKLY)



## Prompt Natural Gas (NG) Daily Sentiment

**NEUTRAL**



RESISTANCE  
3.08 & 3.14  
SUPPORT  
2.92 & 2.85

## Trading Summary

### NATURAL GAS

Futures	Close	Change
NG	2.950	0.060
Volume	421,272	(395,624)
Open Int.	1,324,874	(2,090)

### CRUDE AND GASOLINE

Futures	Close	Change
Crude	48.07	0.59
RBOB	1.6345	(0.0131)
Crude/NG	16.29	(0.13)

### METALS

Futures	Close	Change
Gold	1,331.80	(6.80)

### EQUITIES

Exchange	Close	Change
DOW	22,057.37	259.58
S&P 500	2,488.11	26.68

### CURRENCY

Currency	Close	Change
EUR/USD	1.1953	(0.0059)
USD/CND	1.2144	0.0032

## Contact Us



**Mansfield Energy Corp**  
1025 Airport Pkwy  
Gainesville, GA 30501  
  
www.mansfield.energy  
info@mansfieldoil.com

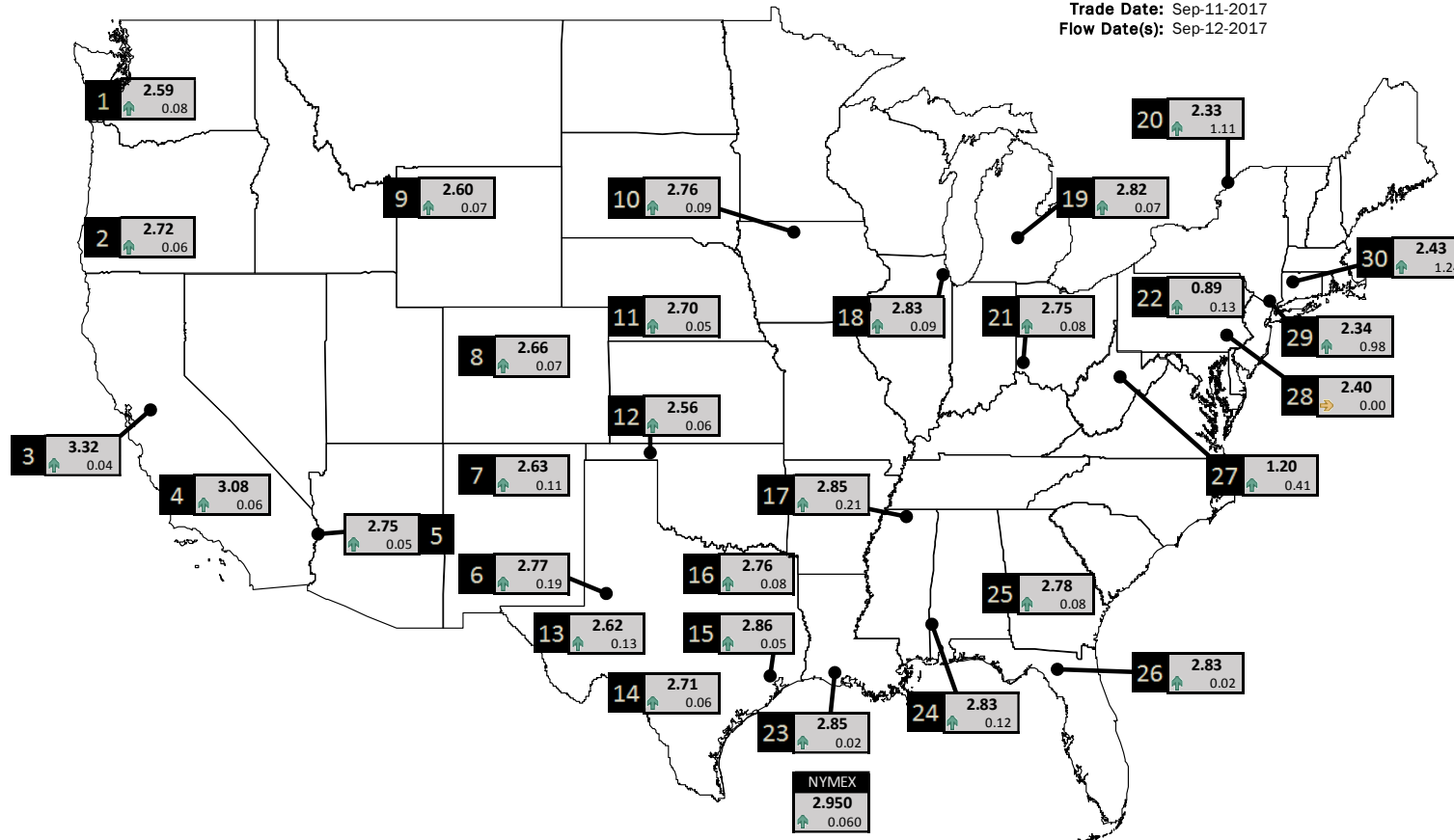
Phone: (800) 695-6626



# NATURAL GAS NEWS

## PHYSICAL SPOT NATURAL GAS PRICE MAP

Trade Date: Sep-11-2017  
Flow Date(s): Sep-12-2017



ID	DAILY INDEX	PRICE	CHANGE
1	Stanfield	2.59	0.08
2	Malin	2.72	0.06
3	PG&E - Citygate	3.32	0.04
4	Socal-Citygate	3.08	0.06
5	SoCal Border	2.75	0.05
6	Waha	2.77	0.19
7	EPSJ Blanco Pool	2.63	0.11
8	Opal Plant Tailgate	2.66	0.07
9	NWP-Wyoming	2.60	0.07
10	Ventura	2.76	0.09

ID	DAILY INDEX	PRICE	CHANGE
11	NGPL-Midcont Pool	2.70	0.05
12	Panhandle	2.56	0.06
13	EP-Permian	2.62	0.13
14	TGP-ZO	2.71	0.06
15	Houston Ship Channel	2.86	0.05
16	NGPL-TXOK	2.76	0.08
17	TETCO-M1.30	2.85	0.21
18	Chicago Citygates	2.83	0.09
19	Michcon	2.82	0.07
20	Iroquois (into)	2.33	1.11

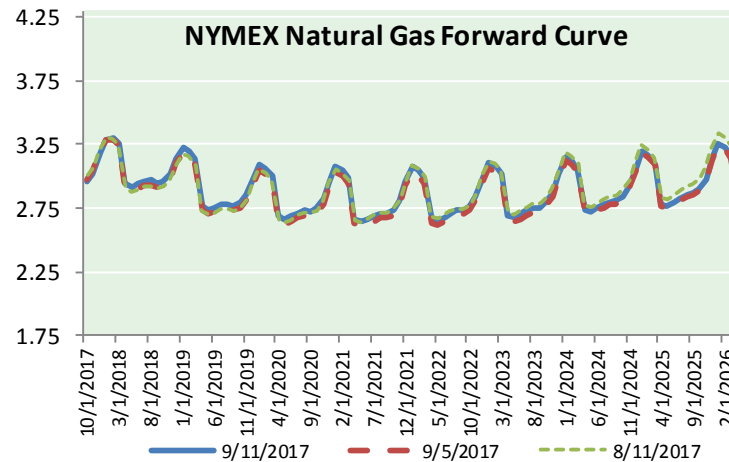
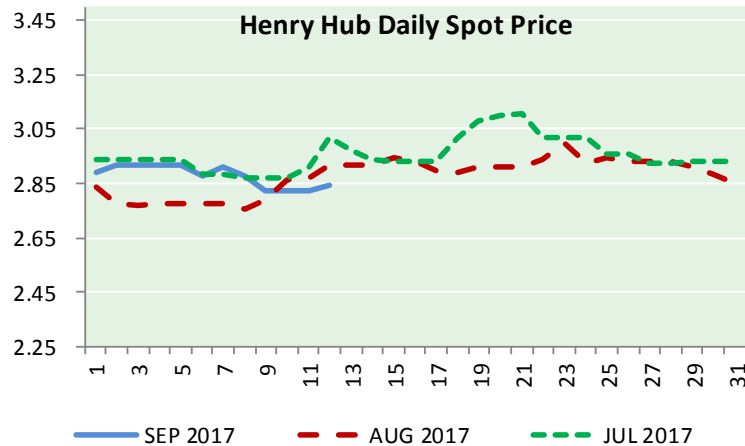
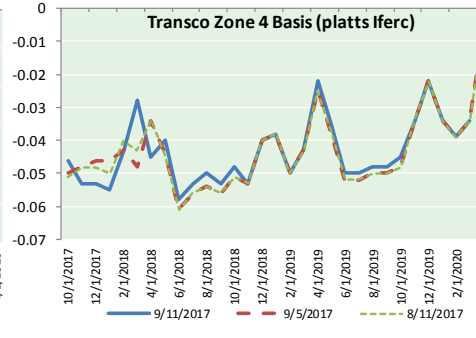
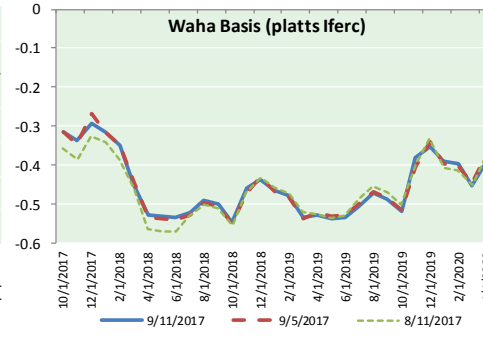
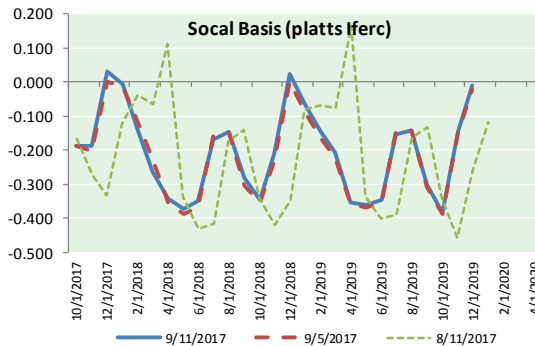
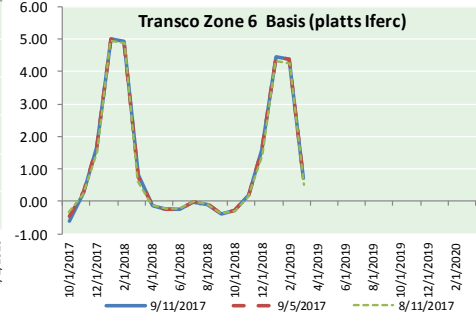
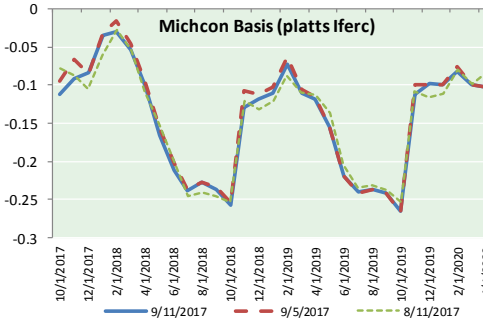
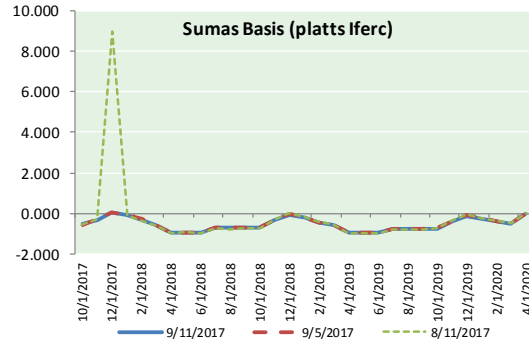
ID	DAILY INDEX	PRICE	CHANGE
21	REX E-ANR	2.75	0.08
22	Leidy-Transco	0.89	0.13
23	Henry	2.85	0.02
24	Transco-85	2.83	0.12
25	Sonat-ZO South	2.78	0.08
26	FGT-Z3	2.83	0.02
27	Dominion-South	1.20	0.41
28	Transco-Z6 (non-NY)	2.40	0.00
29	Transco-Z6 (NY)	2.34	0.98
30	Iroquois-Z2	2.43	1.24

DISCLAIMER: The content herein is privileged and confidential. Content is presented for informational purposes and is a reflection of the market opinions of its authors subject to change without notice. Content is derived from sources believed to be accurate at the time of release but carries no guarantee of accuracy or completeness. Mansfield Energy Corp and its clients may or may not take positions similar or opposite those discussed herein. The reader should realize that the trading of commodities involves risk, and the reader assumes all responsibility for the risk of financial losses.





NATURAL GAS BASIS FUTURES, HENRY HUB SPOT PRICES, AND FORWARD CURVE



CME NG Option Prices

ATM Call

Month	Strike	Close	Imp Vol
Oct-17	3.000	0.048	22.5
Nov-17	3.050	0.121	28.1
Dec-17	3.200	0.180	30.0
Jan-18	3.300	0.256	34.7
Feb-18	3.300	0.338	40.3
Mar-18			
Apr-18			
May-18			
Jun-18			
Jul-18			
Aug-18			
Sep-18			
Oct-18			
Nov-18			
Dec-18			
Jan-19			
Feb-19			

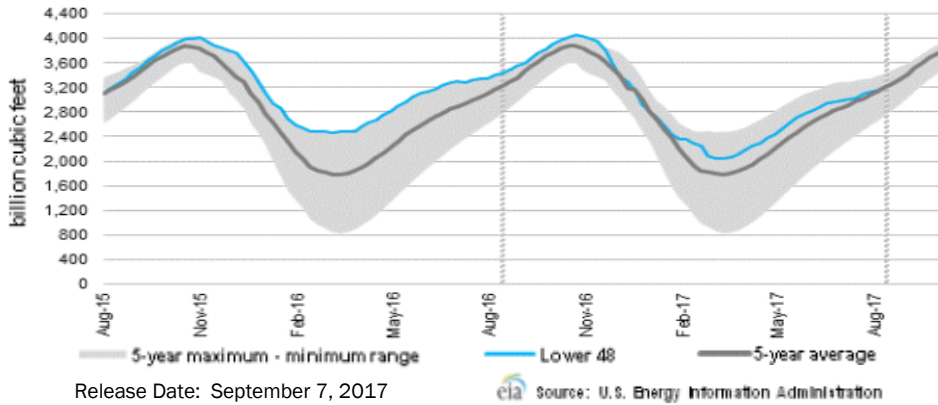
CME NG Option Prices

ATM Put

Month	Strike	Close	Imp Vol
Oct-17	3.000	0.103	41.2
Nov-17	3.050	0.150	35.6
Dec-17	3.200	0.205	35.6
Jan-18	3.300	0.272	39.4
Feb-18	3.300	0.346	44.0
Mar-18			
Apr-18			
May-18			
Jun-18			
Jul-18			
Aug-18			
Sep-18			
Oct-18			
Nov-18			
Dec-18			
Jan-19			
Feb-19			



WEEKLY GAS IN UNDERGROUND STORAGE WITH 5-YR RANGE



Rig Count

Report Date: September 8, 2017

	Total	Change
US -	944	+1
CN -	202	+1

EIA Storage History for 36th Week of Year

(Due to Report Sep 14)

Year	Week Ending	BCF
2013	Sep 06, 2013	+64
2014	Sep 05, 2014	+92
2015	Sep 04, 2015	+72
2016	Sep 02, 2016	+36

ESTIMATE - +76

Total Working Gas In Storage

**3,220 BCF**

- +65 BCF (LAST WEEK)
- (212) BCF (LAST YEAR)
- +15 BCF (5-YR AVG)

U.S. Natural Gas Supply Gas Week 8/31 - 9/6

Average daily values (BCF/D):

Last Year (BCF/d)

Dry Production - +71.3

Total Supply - +76.6

Last Week (BCF/d)

Dry Production - +71.7

Total Supply - +77.2

[NEXT REPORT ON SEP 14]

U.S. Natural Gas Demand Gas Week 8/31 - 9/6

Average daily values (BCF/D):

Last Year (BCF/d)

Power - +31.0

Total Demand - +68.8

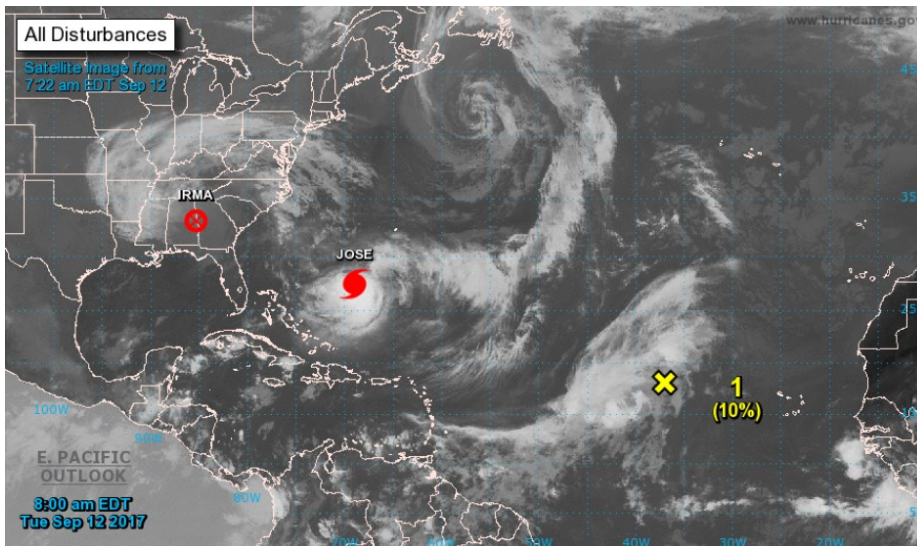
Last Week (BCF/d)

Power - +33.5

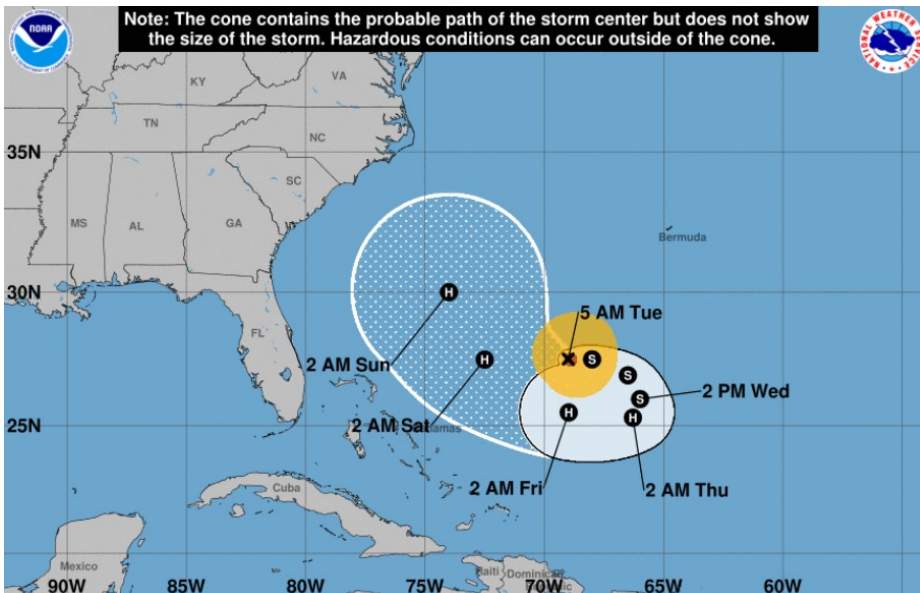
Total Demand - +72.5

[NEXT REPORT ON SEP 14]

TROPICAL STORM ACTIVITY- ATLANTIC



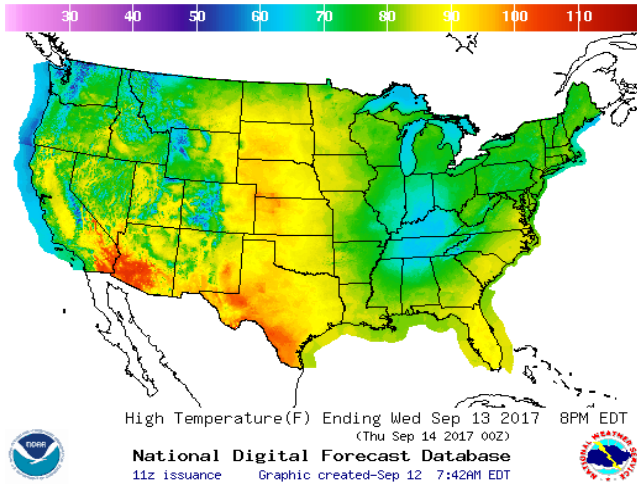
JOSE



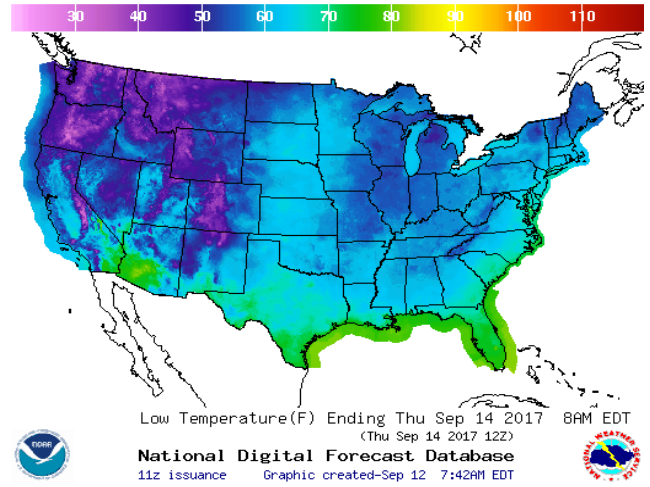


WEATHER – HIGH / LOW TEMPERATURE TOMORROW

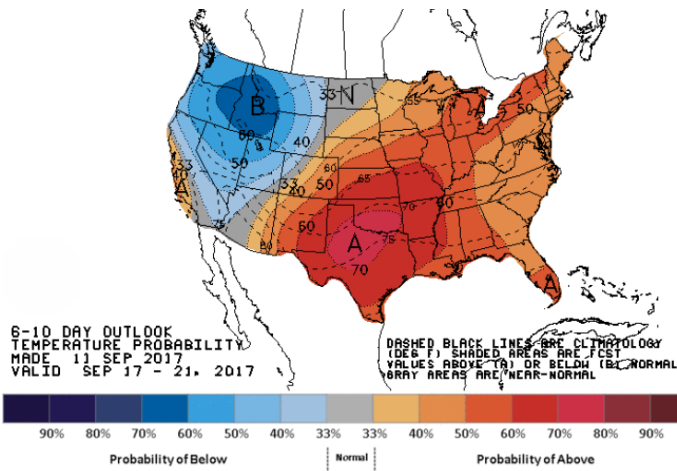
HIGH Temperature



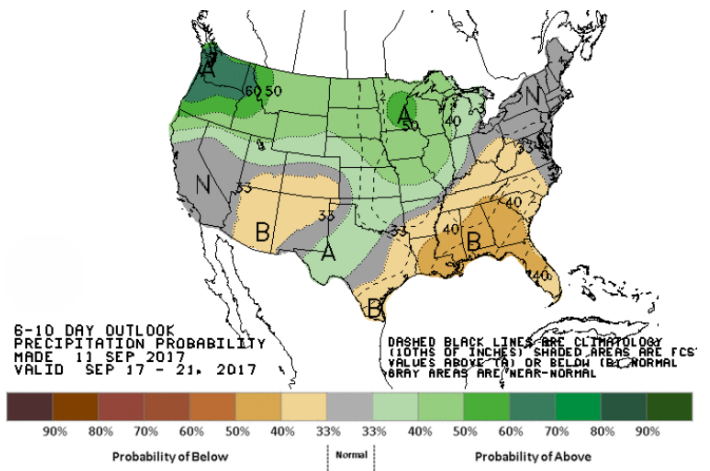
LOW Temperature



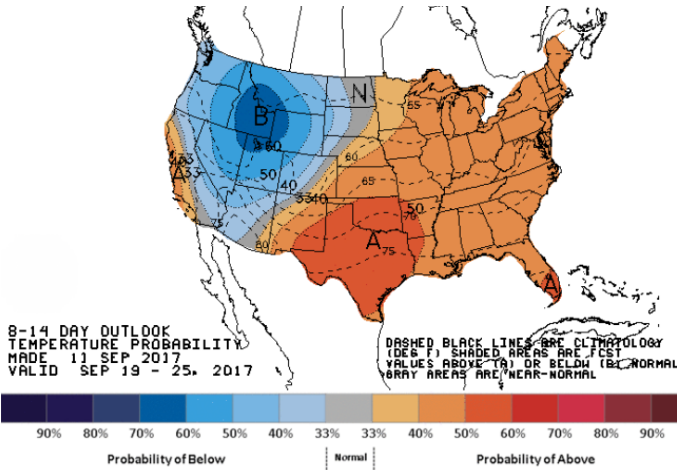
WEATHER – 6 TO 10 DAY OUTLOOK – NOAA  
Temperature



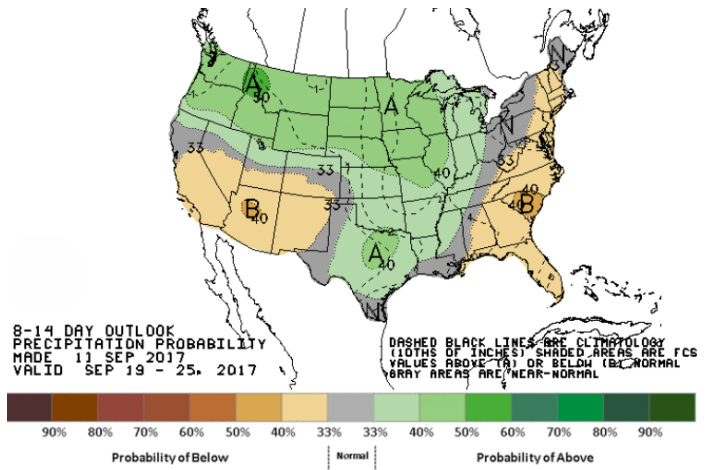
Precipitation



WEATHER – 8 TO 14 DAY OUTLOOK – NOAA  
Temperature

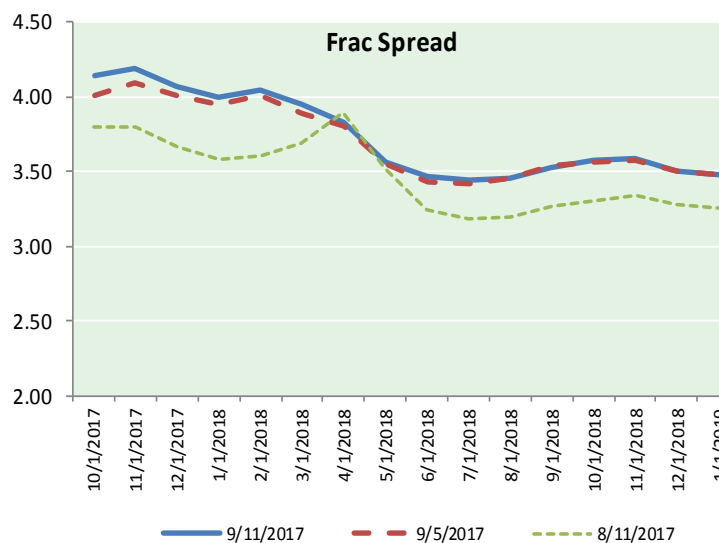
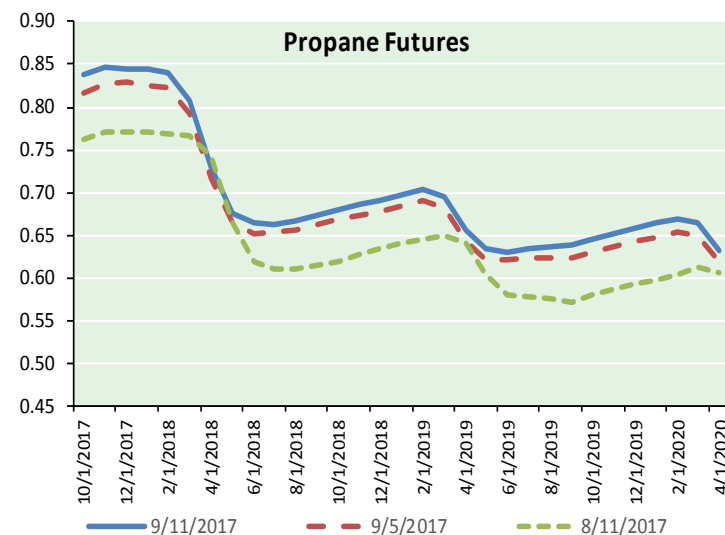
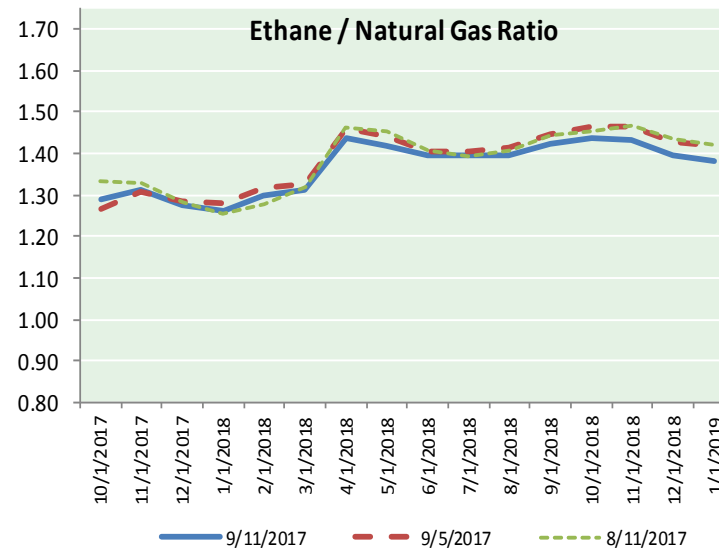
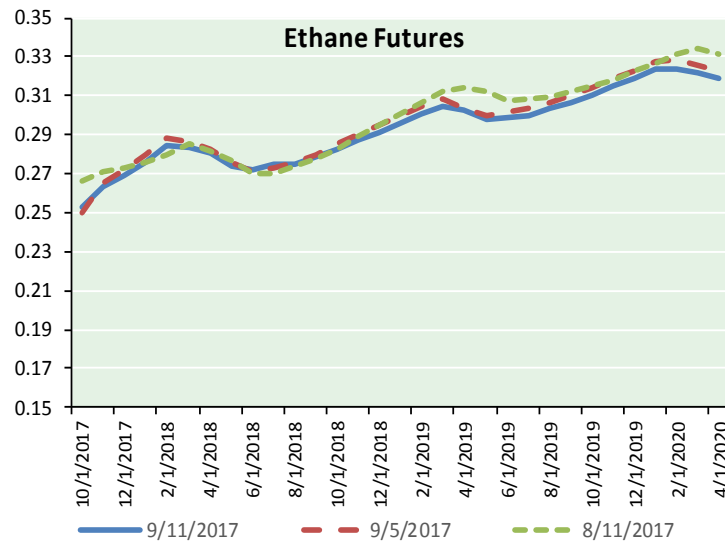


Precipitation





ETHANE FUTURES, NG/ETHANE RATIO, PROPANE FUTURES, AND THE FRAC SPREAD



CME Future Prices

Ethane (C2)

Non-LDH— Mont Belvieu

Month	Close	Change
Oct-17	0.253	0.005
Nov-17	0.264	0.005
Dec-17	0.270	0.003
Jan-18	0.276	0.002
Feb-18	0.285	0.001
Mar-18	0.283	0.001
Apr-18	0.281	0.001
May-18	0.274	0.000
Jun-18	0.272	0.001
Jul-18	0.274	0.001
Aug-18	0.275	0.000
Sep-18	0.279	0.000

1YR Strip 0.274 0.002

CME Future Prices

Propane (C3)

Non-LDH— Mont Belvieu

Month	Close	Change
Oct-17	0.839	0.005
Nov-17	0.847	0.006
Dec-17	0.846	0.004
Jan-18	0.844	0.006
Feb-18	0.839	0.004
Mar-18	0.809	0.003
Apr-18	0.730	0.002
May-18	0.676	(0.001)
Jun-18	0.665	0.001
Jul-18	0.662	(0.002)
Aug-18	0.666	(0.002)
Sep-18	0.673	(0.002)

1YR Strip 0.758 0.002

**NATURAL GAS NEWS**



**Prompt WTI (CL) Crude  
Daily Sentiment**

**BULLISH**



RESISTANCE  
49.05 & 49.83  
SUPPORT  
47.78 & 47.29

**FOLLOW US ON TWITTER:**



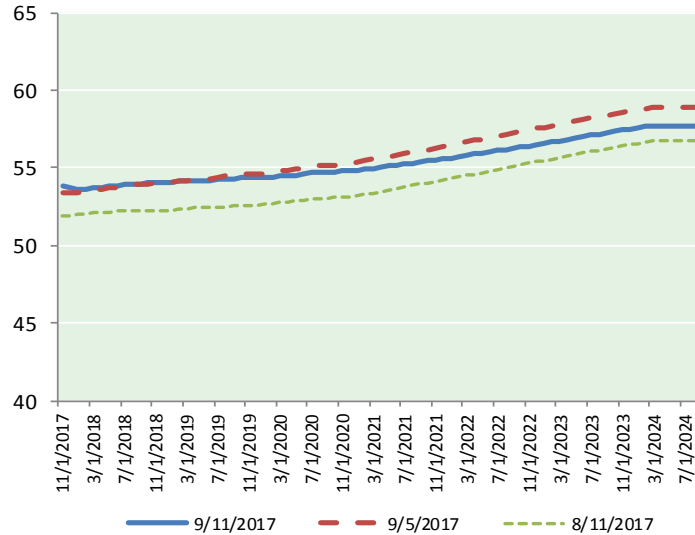
@MPG\_NatGasNews

**NYMEX Brent (BZ)**

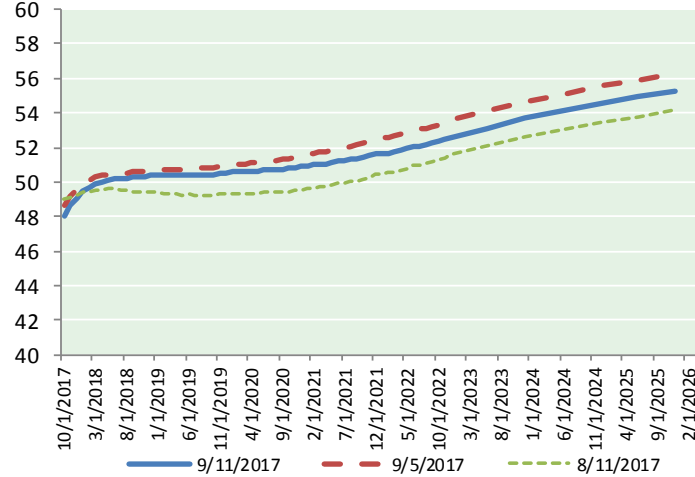
**Futures**

Month	Close	Change
Nov-17	53.84	0.06
Dec-17	53.69	0.11
Jan-18	53.64	0.17
Feb-18	53.67	0.22
Mar-18	53.72	0.25
Apr-18	53.76	0.26
May-18	53.81	0.27
Jun-18	53.86	0.27
Jul-18	53.93	0.28
Aug-18	53.97	0.27
Sep-18	53.98	0.26
Oct-18	54.01	0.26
Nov-18	54.05	0.26
Dec-18	54.07	0.25
Jan-19	54.09	0.25
Feb-19	54.12	0.24
Mar-19	54.15	0.23
Apr-19	54.21	0.22
May-19	54.22	0.21
Jun-19	54.20	0.20
Jul-19	54.27	0.20
Aug-19	54.29	0.19
Sep-19	54.33	0.19
Oct-19	54.37	0.18
1YR Strip 2017	53.82	0.22
5YR Strip	53.77	0.09
	54.73	0.11

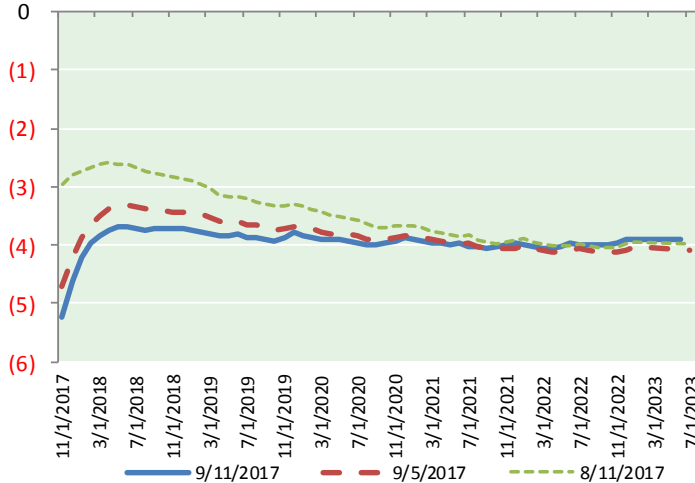
**BRENT CRUDE FORWARD CURVE**



**WTI CRUDE FORWARD CURVE**



**WTI-BRENT SPREAD**



**FRAC Spread**

**Specifications**

Ethane :	42%	66,500 btu/g
Propane :	28%	90,830 btu/g
Butane :	11%	102,916 btu/g
Iso-Butane :	6%	98,935 btu/g
Natural Gasoline :	13%	115,021 btu/g

**Prompt NGL Futures**

**(\$/gallon)**

	Oct-17	Close	Change
Butane		0.979	0.000
Iso-Butane		0.977	(0.003)
Nat Gasoline		1.118	0.002

**NYMEX WTI (CL) Futures**

Month	Close	Change
Oct-17	48.07	0.59
Nov-17	48.62	0.56
Dec-17	49.07	0.51
Jan-18	49.42	0.47
Feb-18	49.69	0.44
Mar-18	49.88	0.42
Apr-18	50.02	0.42
May-18	50.12	0.42
Jun-18	50.18	0.41
Jul-18	50.21	0.40
Aug-18	50.23	0.38
Sep-18	50.26	0.37
Oct-18	50.29	0.35
Nov-18	50.32	0.34
Dec-18	50.35	0.32
Jan-19	50.35	0.31
Feb-19	50.35	0.30
Mar-19	50.35	0.29
Apr-19	50.36	0.27
May-19	50.37	0.26
Jun-19	50.40	0.26
Jul-19	50.40	0.25
Aug-19	50.41	0.24
Sep-19	50.42	0.23
1YR Strip 2017	49.65	0.45
5YR Strip	48.59	0.55
	50.75	0.19