

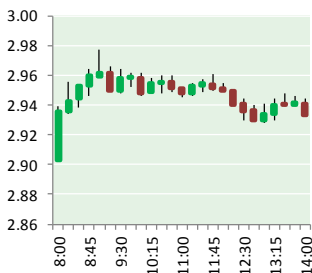
MARKET NEWS AND INFORMATION

NATURAL GAS



OCTOBER 6, 2017

Prior Day's NYMEX Oct-17 Contract (CT)



NYMEX NG Futures

Month	Close	Change
Nov-17	2.923	(0.017)
Dec-17	3.103	(0.019)
Jan-18	3.230	(0.017)
Feb-18	3.235	(0.013)
Mar-18	3.193	(0.008)
Apr-18	2.939	0.006
May-18	2.911	0.008
Jun-18	2.939	0.007
Jul-18	2.966	0.007
Aug-18	2.969	0.007
Sep-18	2.951	0.008
Oct-18	2.974	0.007
Nov-18	3.028	0.006
Dec-18	3.164	0.005
Jan-19	3.248	0.004
Feb-19	3.225	0.004
Mar-19	3.153	0.004
Apr-19	2.758	0.004
May-19	2.719	0.003
Jun-19	2.741	0.003
Jul-19	2.763	0.003
Aug-19	2.767	0.002
Sep-19	2.753	0.002
Oct-19	2.776	0.001
1YR Strip	3.028	(0.002)
2017	3.013	(0.018)
5YR Strip	2.901	0.002

IN THE NEWS

Tropical Storm Nate Threatens Oil Rigs in the U.S. Gulf — Bloomberg reports: Tropical Storm Nate has formed off of Nicaragua, threatening to inundate Central America, shut oil and gas

- **Tropical Storm Nate Threatens Oil Rigs in the U.S. Gulf**
- **Inventories Spread: Could Natural Gas Make a U-Turn?**

rigs in the Gulf of Mexico and damage cotton and citrus crops across the U.S. South. There is about 45 percent chance Nate will disrupt energy production in the Gulf, said Matt Rogers, president of the Commodity Weather Group LLC in Bethesda, Maryland. But Rogers said he doesn't see much chance for any lasting damage because Nate won't be strong enough. Offshore rigs and platforms in the Gulf of Mexico account for about 17 percent of U.S. crude oil output and 4 percent of gas production. About 45 percent of petroleum refining capacity and 51 percent of gas processing is along the coastline. For more visit Bloomberg.com or click the following link <https://bloom.bg/2h0huSD>

Inventories Spread: Could Natural Gas Make a U-Turn? — Market Realist reports: In the week ended September 22, 2017, natural gas inventories increased 58 Bcf (billion cubic feet) to 3,466 Bcf, based on EIA (Energy Information Administration) data. This increase was 19 Bcf less than the market's expected increase. However, natural gas November futures fell 1.4% after the inventory report on September 28, 2017. The market expects a rise of 56 Bcf in the natural gas inventories level for the week ended September 29, 2017. During the same period in 2016, natural gas inventories rose 80 Bcf. However, any rise up to ~92 Bcf would not increase the inventories spread. Any rise that is less than 92 Bcf can narrow the inventories spread. For more on this story visit marketrealist.com or click the following link <http://bit.ly/2y2WtjX>

12 MONTH CANDLESTICK (WEEKLY)



Prompt Natural Gas (NG) Daily Sentiment

BEARISH



RESISTANCE
2.98 & 3.04
SUPPORT
2.88 & 2.84

Trading Summary

NATURAL GAS

Futures	Close	Change
NG	2.923	(0.017)
Volume	386,175	19,132
Open Int.	1,388,702	(5,861)

CRUDE AND GASOLINE

Futures	Close	Change
Crude	50.79	0.81
RBOB	1.6114	0.0309
Crude/NG	17.38	0.38

METALS

Futures	Close	Change
Gold	1,269.90	(0.80)

EQUITIES

Exchange	Close	Change
DOW	22,661.64	19.97
S&P 500	2,552.07	14.33

CURRENCY

Currency	Close	Change
EUR/USD	1.1720	(0.0040)
USD/CND	1.2570	0.0003

Contact Us



Mansfield Energy Corp
1025 Airport Pkwy
Gainesville, GA 30501

www.mansfield.energy

info@mansfieldoil.com

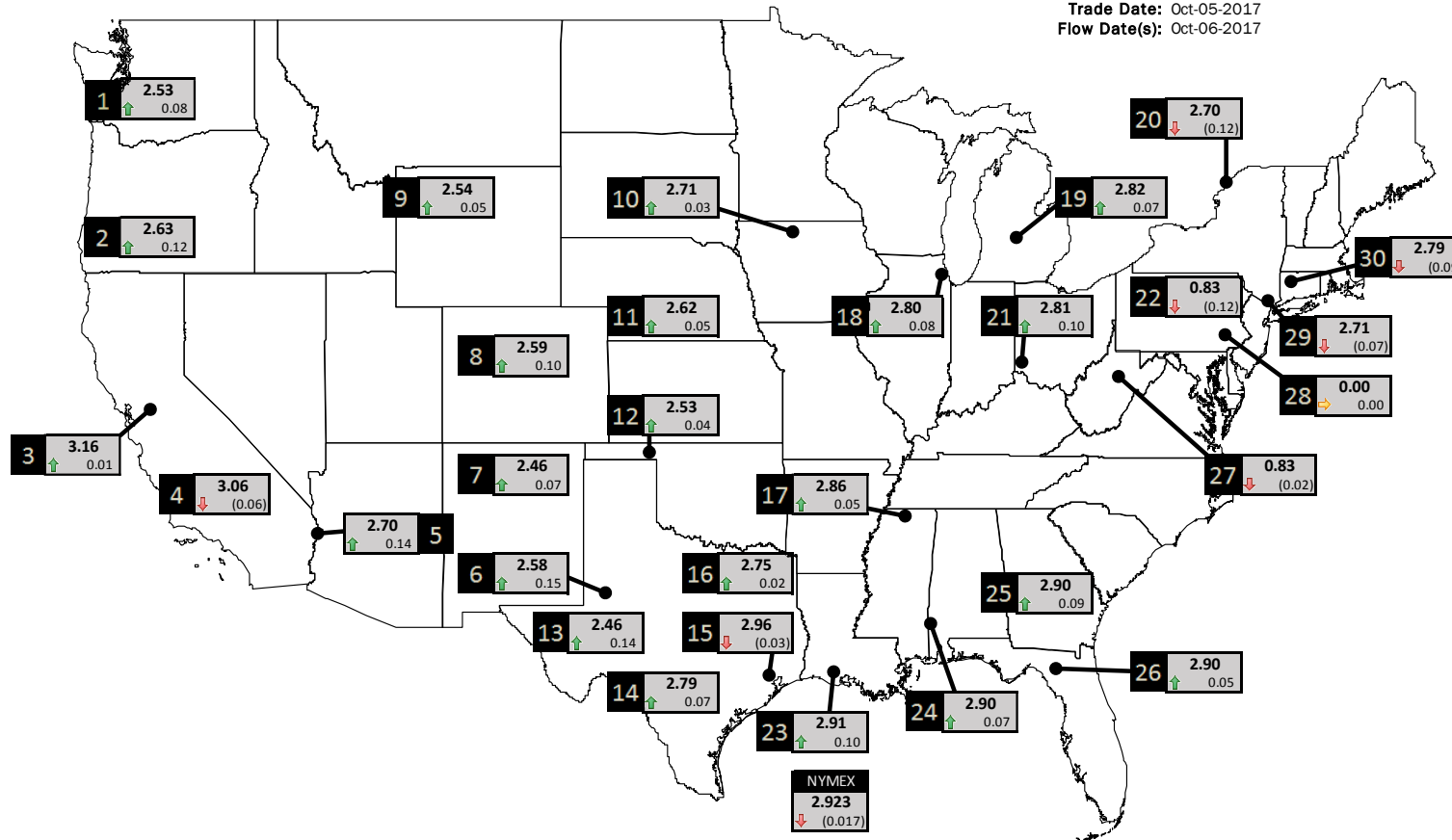
Phone: (800) 695-6626



NATURAL GAS NEWS

PHYSICAL SPOT NATURAL GAS PRICE MAP

Trade Date: Oct-05-2017
Flow Date(s): Oct-06-2017



ID	DAILY INDEX	PRICE	CHANGE
1	Stanfield	2.53	0.08
2	Malin	2.63	0.12
3	PG&E - Citygate	3.16	0.01
4	SoCal-Citygate	3.06	(0.06)
5	SoCal Border	2.70	0.14
6	Waha	2.58	0.15
7	EPSJ Blanco Pool	2.46	0.07
8	Opal Plant Tailgate	2.59	0.10
9	NWP-Wyoming	2.54	0.05
10	Ventura	2.71	0.03

ID	DAILY INDEX	PRICE	CHANGE
11	NGPL-Midcont Pool	2.62	0.05
12	Panhandle	2.53	0.04
13	EP-Permian	2.46	0.14
14	TGP-ZO	2.79	0.07
15	Houston Ship Channel	2.96	(0.03)
16	NGPL-TXOK	2.75	0.02
17	TETCO-M1 30	2.86	0.05
18	Chicago Citygates	2.80	0.08
19	Michcon	2.82	0.07
20	Iroquois (into)	2.70	(0.12)
	NYMEX	2.923	(0.017)

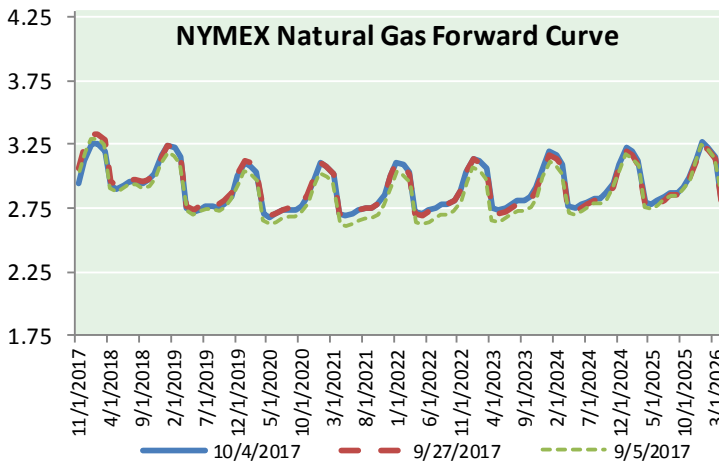
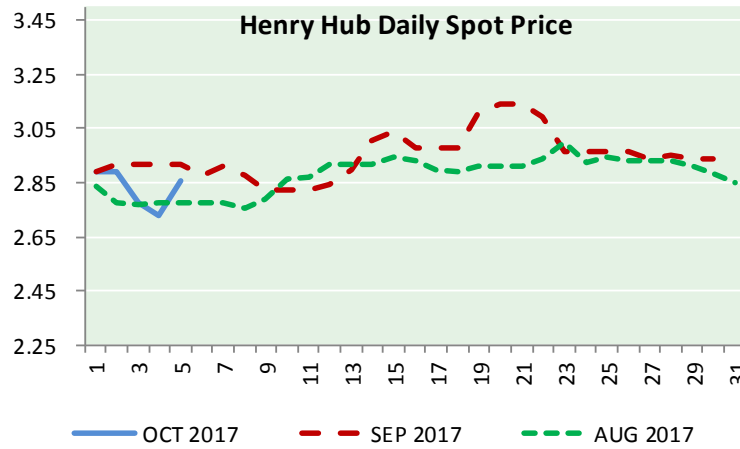
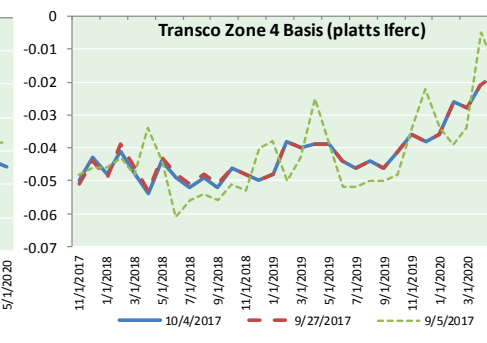
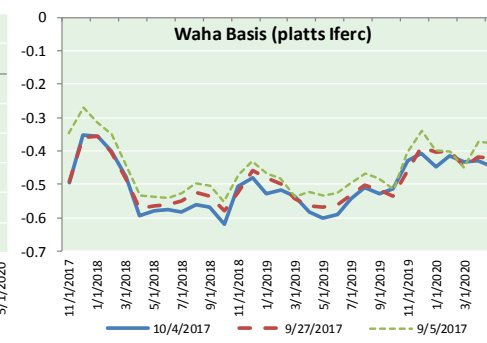
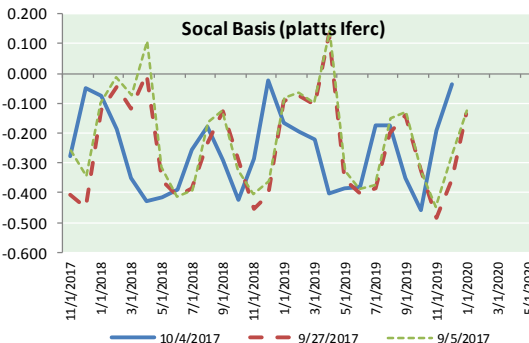
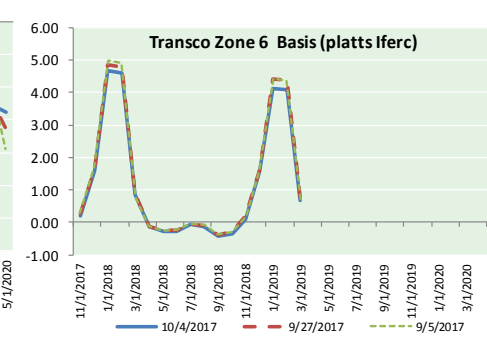
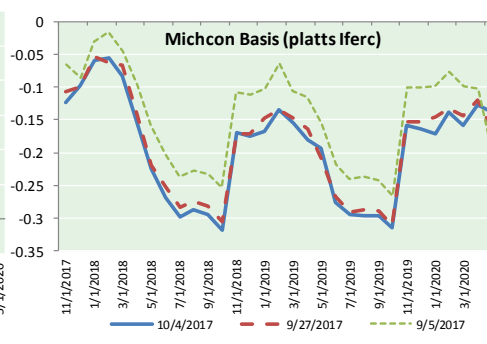
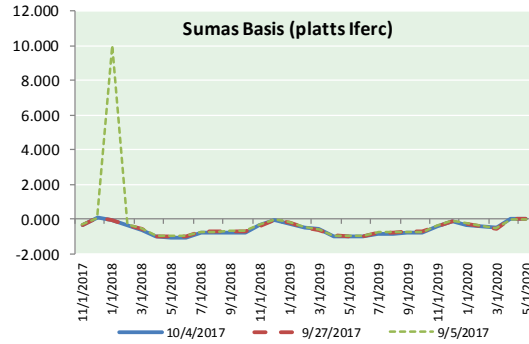
ID	DAILY INDEX	PRICE	CHANGE
21	REX E-ANR	2.81	0.10
22	Leidy-Transco	0.83	(0.12)
23	Henry	2.91	0.10
24	Transco-85	2.90	0.07
25	Sonat-ZO South	2.90	0.09
26	FGT-Z3	2.90	0.05
27	Dominion-South	0.83	(0.02)
28	Transco-Z6 (non-NY)	0.00	0.00
29	Transco-Z6 (NY)	2.71	(0.07)
30	Iroquois-Z2	2.79	(0.09)

DISCLAIMER: The content herein is privileged and confidential. Content is presented for informational purposes and is a reflection of the market opinions of its authors subject to change without notice. Content is derived from sources believed to be accurate at the time of release but carries no guarantee of accuracy or completeness. Mansfield Energy Corp and its clients may or may not take positions similar or opposite those discussed herein. The reader should realize that the trading of commodities involves risk, and the reader assumes all responsibility for the risk of financial losses.





NATURAL GAS BASIS FUTURES, HENRY HUB SPOT PRICES, AND FORWARD CURVE



CME NG Option Prices

ATM Call

Month	Strike	Close	Imp Vol
Nov-17	2.900	0.102	37.5
Dec-17	3.100	0.164	37.5
Jan-18	3.200	0.250	41.2
Feb-18	3.200	0.310	43.1
Mar-18	3.150	0.361	45.0
Apr-18			
May-18			
Jun-18			
Jul-18			
Aug-18			
Sep-18			
Oct-18			
Nov-18			
Dec-18			
Jan-19			
Feb-19			
Mar-19			

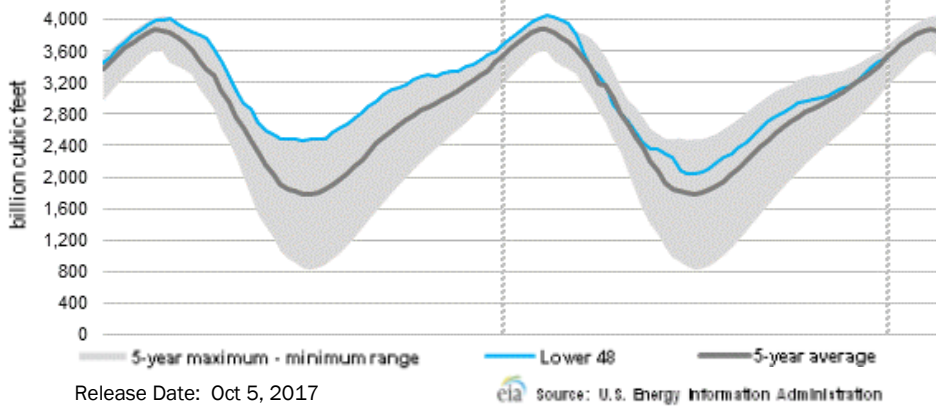
CME NG Option Prices

ATM Put

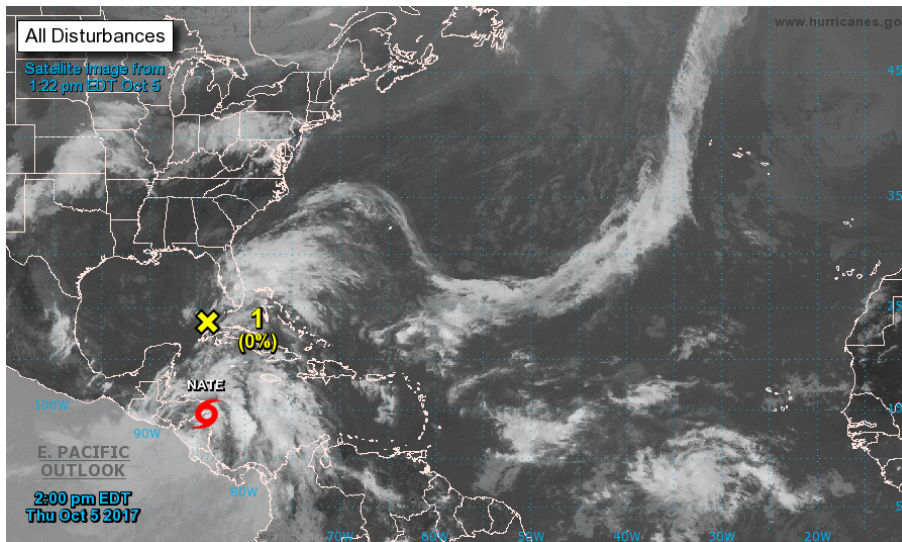
Month	Strike	Close	Imp Vol
Nov-17	2.900	0.077	28.1
Dec-17	3.100	0.152	30.0
Jan-18	3.200	0.216	35.6
Feb-18	3.200	0.277	39.4
Mar-18	3.150	0.315	41.2
Apr-18			
May-18			
Jun-18			
Jul-18			
Aug-18			
Sep-18			
Oct-18			
Nov-18			
Dec-18			
Jan-19			
Feb-19			
Mar-19			

NATURAL GAS NEWS

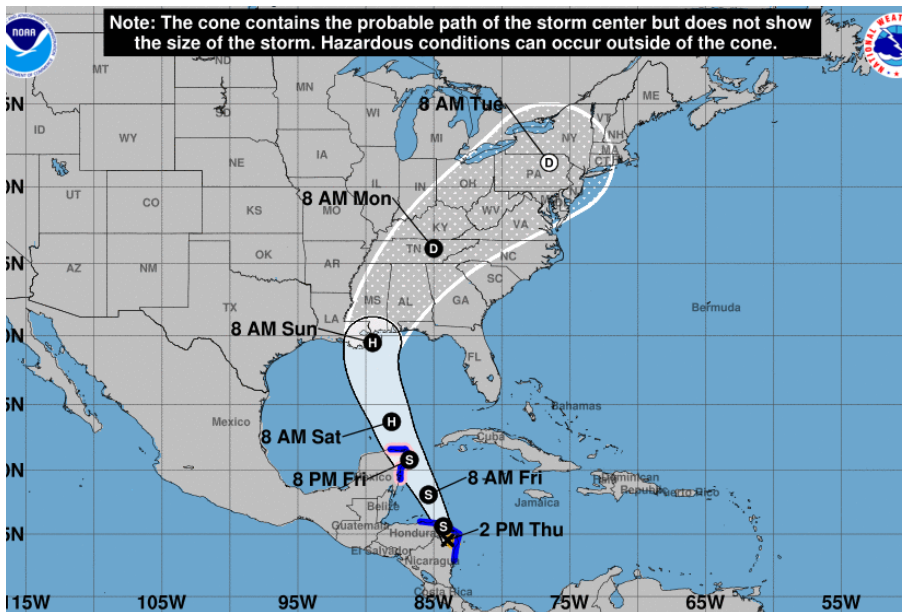
WEEKLY GAS IN UNDERGROUND STORAGE WITH 5-YR RANGE



TROPICAL STORM ACTIVITY— ATLANTIC



IRMA



Rig Count

Report Date: September 29, 2017

	Total	Change
US -	940	+5
CN -	213	(7)

EIA Weekly NG Storage Actual and Surveys for September 29, 2017 Released October 5, 2017

PIRA — +42
 ARM — +44
 Reuters — +51

EIA ACTUAL — +42

Total Working Gas In Storage

3,508 BCF

+42 BCF (LAST WEEK)
 (161) BCF (LAST YEAR)
 (8) BCF (5-YR AVG)

U.S. Natural Gas Supply Gas Week 9/28 - 10/4

Average daily values (BCF/d):
 Last Year (BCF/d)
 Dry Production — +70.5
 Total Supply — + 76.9
 Last Week (BCF/d)
 Dry Production — +73.9
 Total Supply — +79.7

[NEXT REPORT ON OCT 13]

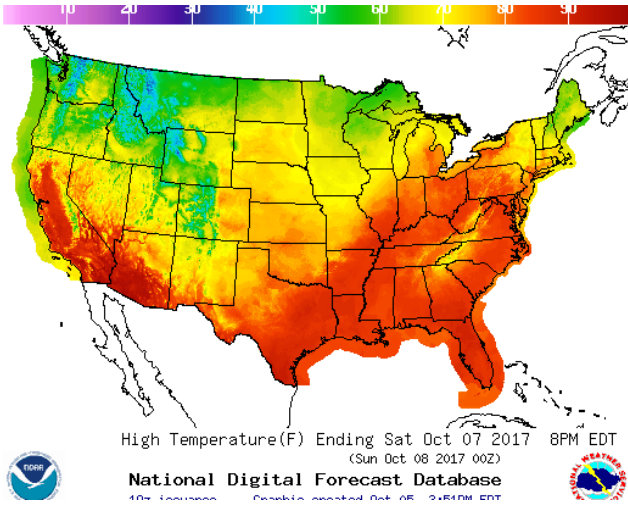
U.S. Natural Gas Demand Gas Week 9/28- 10/4

Average daily values (BCF/d):
 Last Year (BCF/d)
 Power — +25.1
 Total Demand — +61.7
 Last Week (BCF/d)
 Power — +25.7
 Total Demand — +64.7

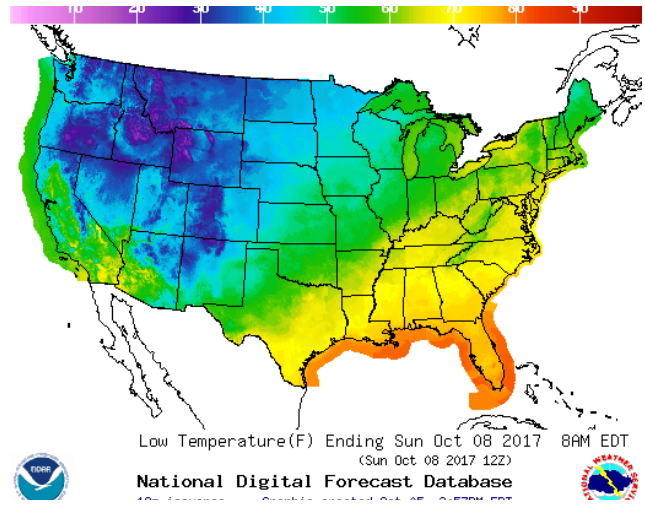
[NEXT REPORT ON SEP 13]

WEATHER – HIGH / LOW TEMPERATURE SATURDAY

HIGH Temperature

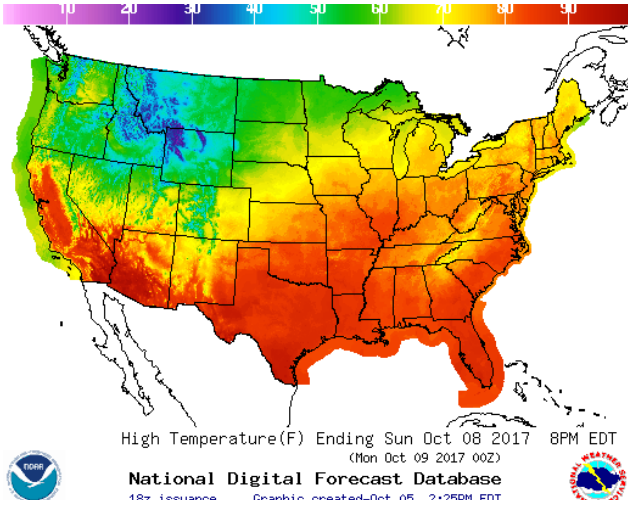


LOW Temperature

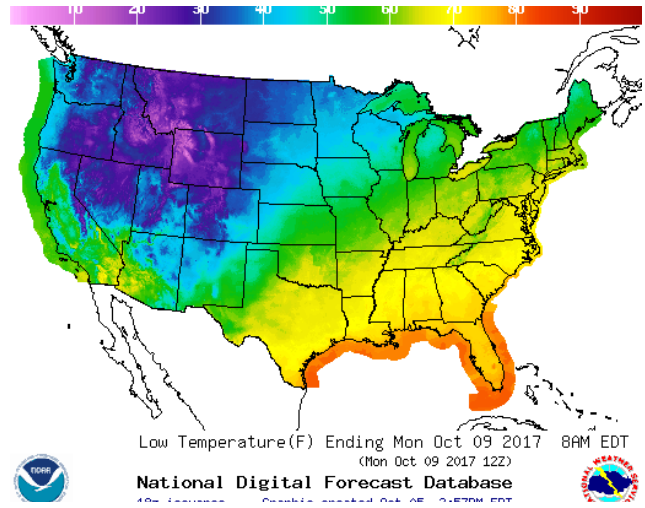


WEATHER – HIGH / LOW TEMPERATURE SUNDAY

HIGH Temperature

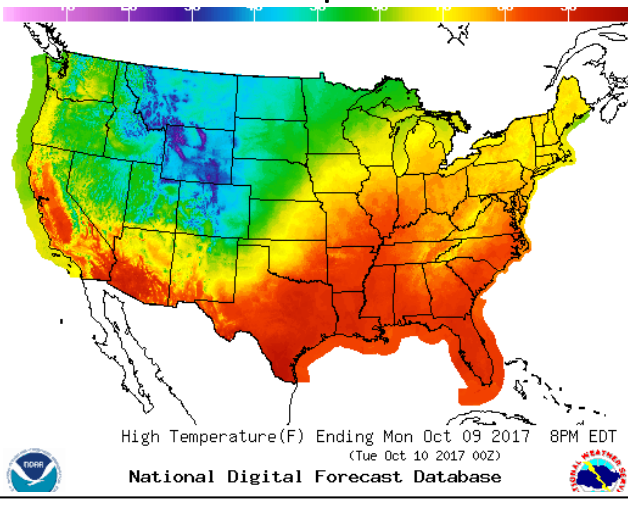


LOW Temperature

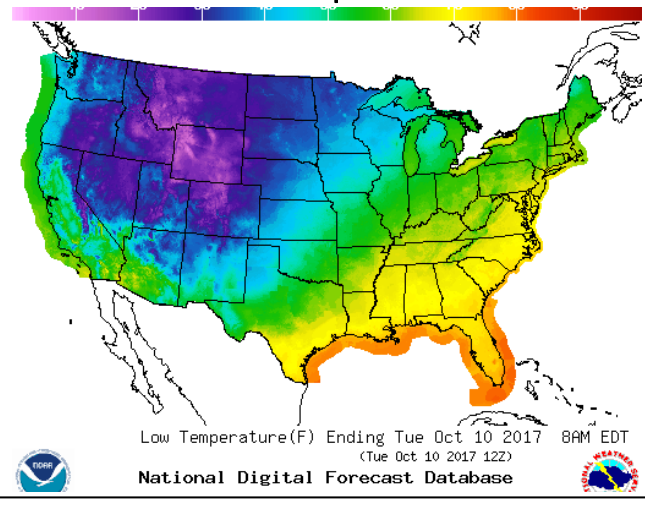


WEATHER – HIGH / LOW TEMPERATURE MONDAY

HIGH Temperature

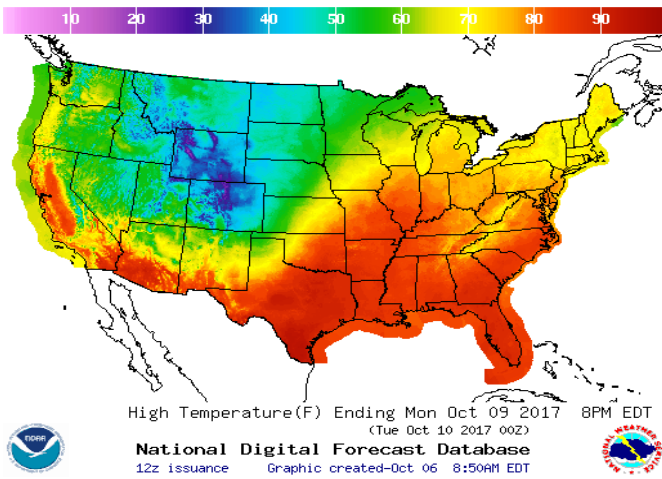


LOW Temperature

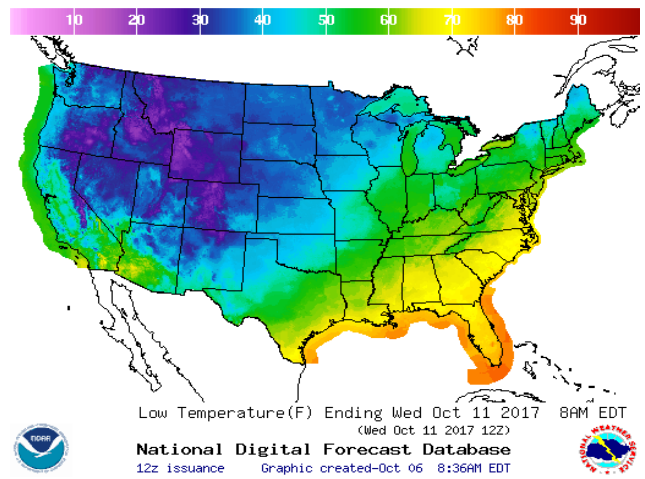


WEATHER — HIGH / LOW TEMPERATURE TUESDAY

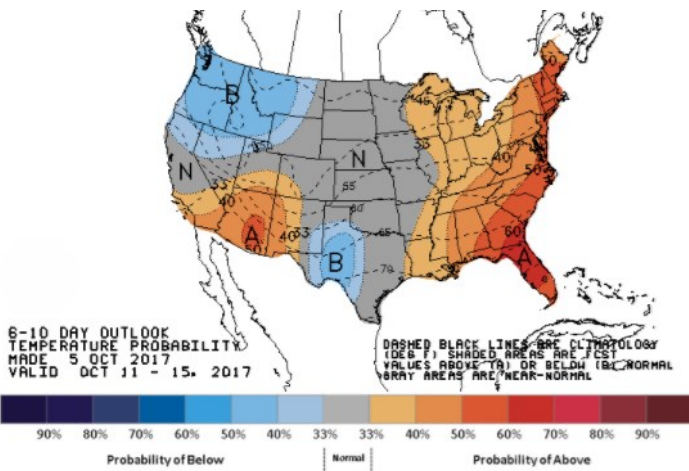
HIGH Temperature



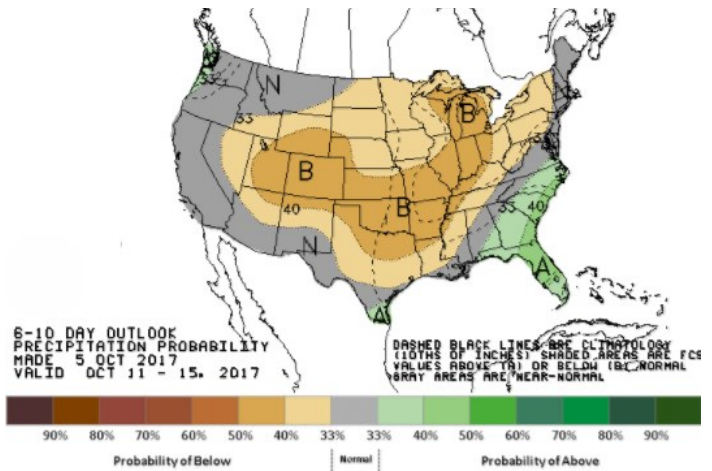
LOW Temperature



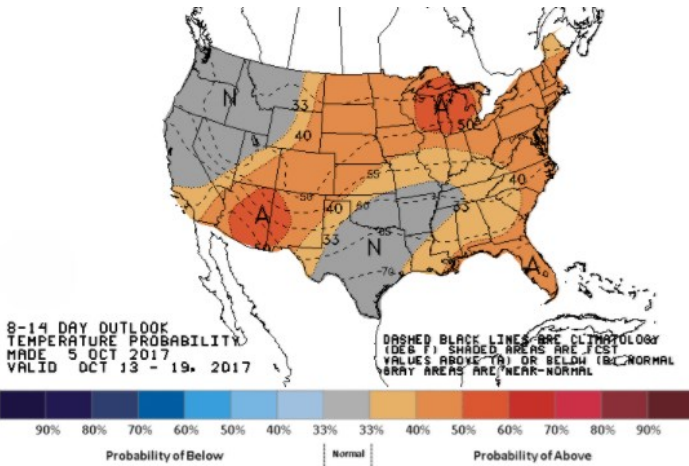
WEATHER — 6 TO 10 DAY OUTLOOK — NOAA
Temperature



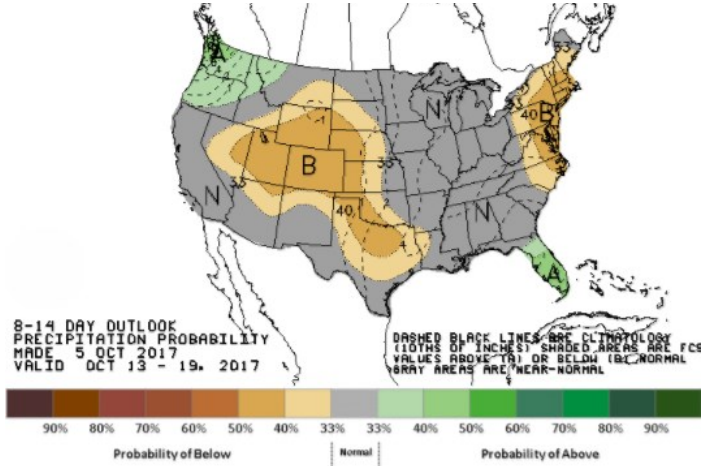
Precipitation



WEATHER — 8 TO 14 DAY OUTLOOK — NOAA
Temperature



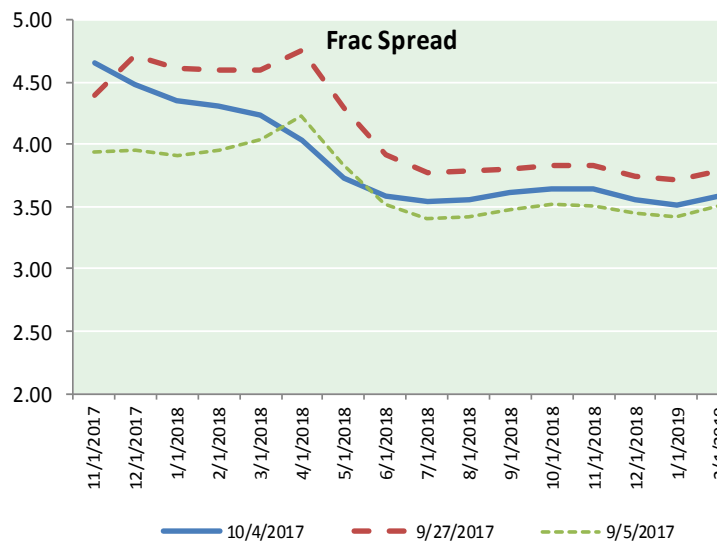
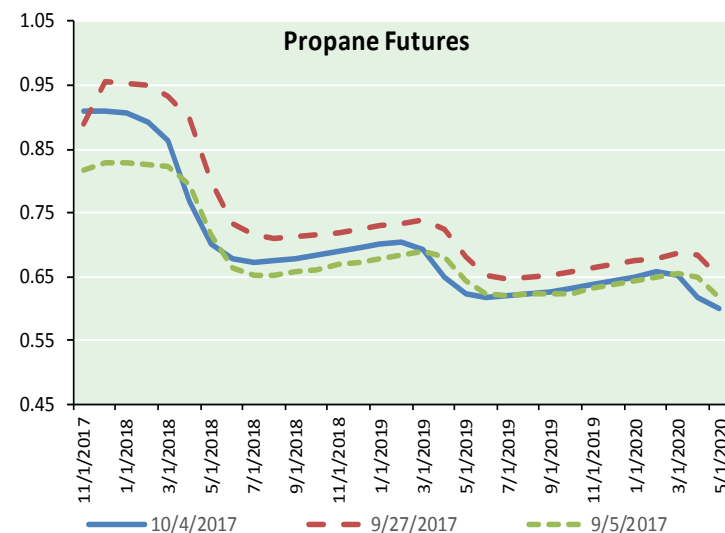
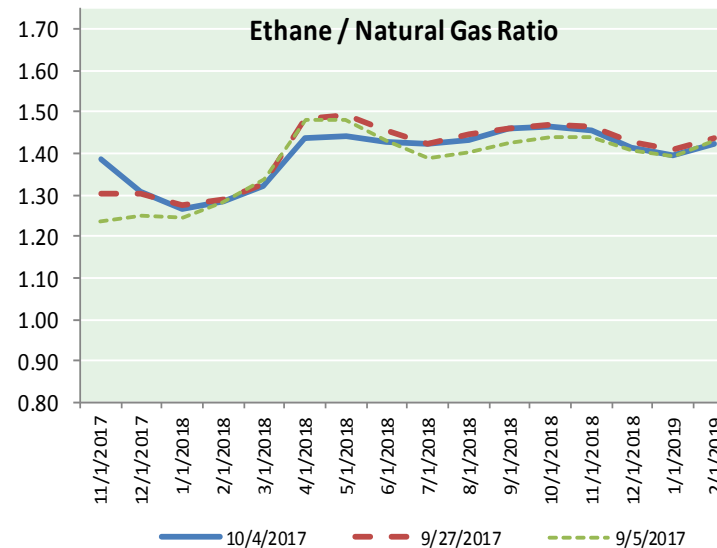
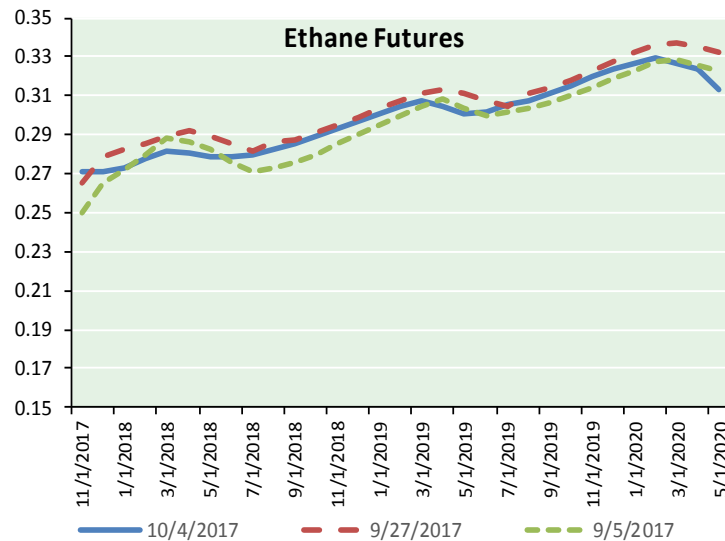
Precipitation



NATURAL GAS NEWS



ETHANE FUTURES, NG/ETHANE RATIO, PROPANE FUTURES, AND THE FRAC SPREAD



CME Future Prices

Ethane (C2)

Non-LDH— Mont Belvieu

Month	Close	Change
Nov-17	0.271	0.003
Dec-17	0.271	0.004
Jan-18	0.273	0.004
Feb-18	0.278	0.004
Mar-18	0.282	0.003
Apr-18	0.280	0.003
May-18	0.279	0.003
Jun-18	0.279	0.002
Jul-18	0.280	0.002
Aug-18	0.282	0.002
Sep-18	0.285	0.002
Oct-18	0.289	0.002

1YR Strip 0.279 0.003

CME Future Prices

Propane (C3)

Non-LDH— Mont Belvieu

Month	Close	Change
Nov-17	0.909	0.039
Dec-17	0.911	0.041
Jan-18	0.906	0.038
Feb-18	0.893	0.036
Mar-18	0.863	0.034
Apr-18	0.767	0.025
May-18	0.701	0.020
Jun-18	0.679	0.017
Jul-18	0.673	0.016
Aug-18	0.675	0.015
Sep-18	0.679	0.014
Oct-18	0.684	0.014

1YR Strip 0.778 0.026

NATURAL GAS NEWS



Prompt WTI (CL) Crude Daily Sentiment

BULLISH



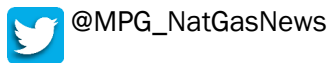
RESISTANCE

51.39 & 51.99

SUPPORT

50.02 & 49.25

FOLLOW US ON TWITTER:

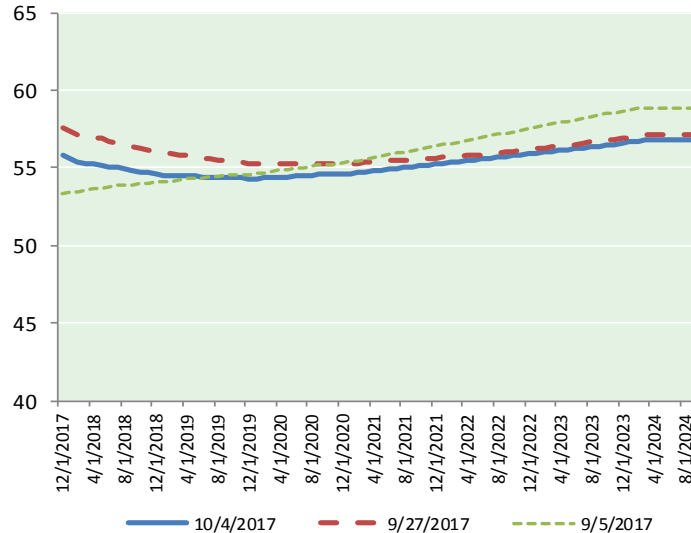


NYMEX Brent (BZ)

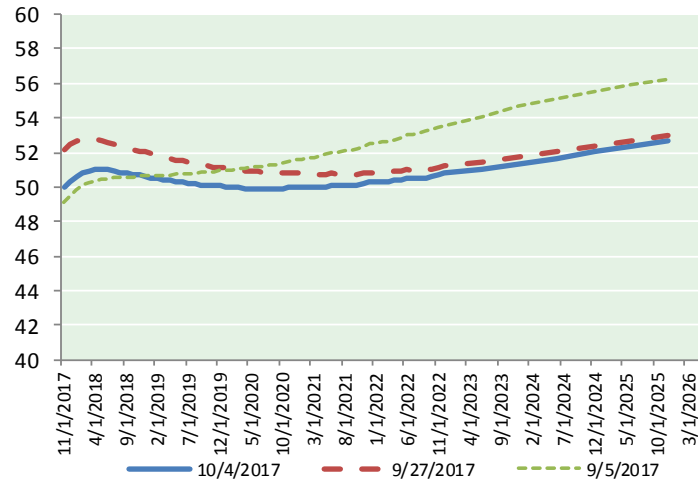
Futures

Month	Close	Change
Dec-17	57.00	1.20
Jan-18	56.71	1.11
Feb-18	56.46	1.05
Mar-18	56.29	1.00
Apr-18	56.18	0.96
May-18	56.08	0.92
Jun-18	55.96	0.88
Jul-18	55.86	0.85
Aug-18	55.75	0.83
Sep-18	55.64	0.81
Oct-18	55.54	0.79
Nov-18	55.46	0.78
Dec-18	55.37	0.76
Jan-19	55.29	0.74
Feb-19	55.25	0.72
Mar-19	55.20	0.70
Apr-19	55.19	0.69
May-19	55.13	0.67
Jun-19	55.03	0.64
Jul-19	55.02	0.62
Aug-19	54.98	0.60
Sep-19	54.96	0.59
Oct-19	54.96	0.57
Nov-19	54.90	0.56
1YR Strip	56.08	0.93
2017	57.00	1.20
5YR Strip	55.43	0.57

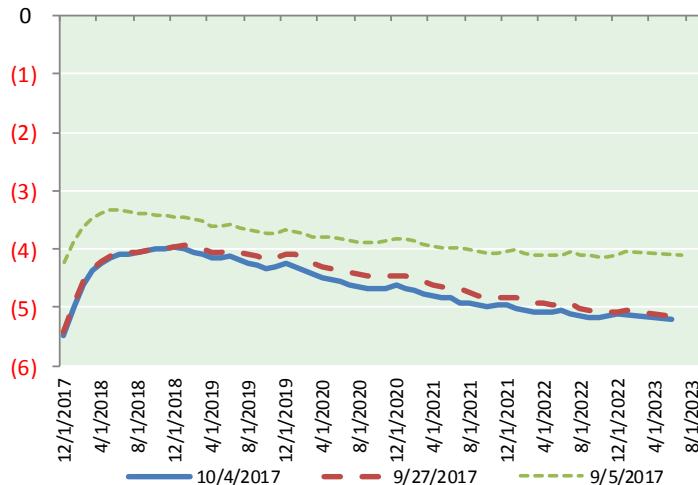
BRENT CRUDE FORWARD CURVE



WTI CRUDE FORWARD CURVE



WTI-BRENT SPREAD



FRAC Spread

Specifications

Ethane : 42%	66,500 btu/g
Propane: 28%	90,830 btu/g
Butane: 11%	102,916 btu/g
Iso-Butane: 6%	98,935 btu/g
Natural Gasoline: 13%	115,021 btu/g

Prompt NGL Futures

(\$/gallon)

Nov-17	Close	Change
Butane	1.040	0.027
Iso-Butane	1.038	0.019
Nat Gasoline	1.179	0.002

NYMEX WTI (CL) Futures

Month	Close	Change
Nov-17	50.79	0.81
Dec-17	51.15	0.83
Jan-18	51.44	0.84
Feb-18	51.64	0.85
Mar-18	51.77	0.85
Apr-18	51.84	0.85
May-18	51.85	0.84
Jun-18	51.82	0.83
Jul-18	51.74	0.81
Aug-18	51.66	0.80
Sep-18	51.58	0.78
Oct-18	51.51	0.77
Nov-18	51.45	0.76
Dec-18	51.40	0.76
Jan-19	51.30	0.75
Feb-19	51.21	0.73
Mar-19	51.12	0.71
Apr-19	51.05	0.69
May-19	50.98	0.67
Jun-19	50.94	0.66
Jul-19	50.86	0.65
Aug-19	50.78	0.63
Sep-19	50.71	0.61
Oct-19	50.67	0.61
1YR Strip	51.57	0.82
2017	50.97	0.82
5YR Strip	50.85	0.56