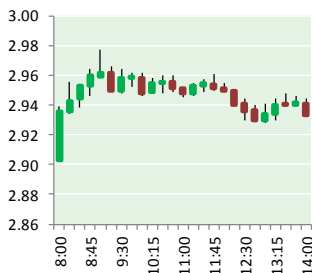


# NATURAL GAS



OCTOBER 5, 2017

## Prior Day's NYMEX Nov-17 Contract (CT)



## NYMEX NG Futures

Month	Close	Change
Nov-17	2.940	0.045
Dec-17	3.122	0.037
Jan-18	3.247	0.030
Feb-18	3.248	0.026
Mar-18	3.201	0.025
Apr-18	2.933	0.027
May-18	2.903	0.027
Jun-18	2.932	0.027
Jul-18	2.959	0.028
Aug-18	2.962	0.028
Sep-18	2.943	0.029
Oct-18	2.967	0.030
Nov-18	3.022	0.031
Dec-18	3.159	0.031
Jan-19	3.244	0.030
Feb-19	3.221	0.029
Mar-19	3.149	0.028
Apr-19	2.754	0.003
May-19	2.716	0.002
Jun-19	2.738	0.001
Jul-19	2.760	0.000
Aug-19	2.765	0.000
Sep-19	2.751	0.000
Oct-19	2.775	(0.002)
1YR Strip	3.030	0.030
2017	3.031	0.041
5YR Strip	2.899	0.007

## IN THE NEWS

### Tropical Depression Raises Hurricane Threat for U.S. Gulf Coast

— Bloomberg reported: A tropical depression that could grow into a hurricane is forecast to strike the U.S. Gulf Coast late Sunday, potentially shutting down offshore oil and natural gas rigs and dealing another blow to citrus growers. The system off the

- **Tropical Depression Raises Hurricane Threat for U.S. Gulf Coast**
- **Crude Oil Prices Slide Further on Bets for Bearish U.S. Supply Data**

Nicaraguan coast is expected to strengthen into a tropical storm later Wednesday and reach hurricane strength with winds of 80 miles (129 kilometers) per hour Sunday as it nears the U.S. coastline between Louisiana and Florida, according to the U.S. National Hurricane Center in Miami. Storm warnings have been issued for Honduras and Nicaragua. As it nears the U.S. coastline the storm, which would be named Nate, could strengthen to a Category 1 hurricane on the five-step Saffir-Simpson scale, the hurricane center said. There is about a 30 percent chance it will disrupt U.S. offshore energy operations, as companies may evacuate some personnel, said Matt Rogers, president of the Commodity Weather Group LLC in Bethesda, Maryland. For more visit bloomberg.com or click <https://bloom.bg/2xZQo8u>

### Crude Oil Prices Slide Further on Bets for Bearish U.S. Supply Data

— Investing.com reported: Crude oil prices slid further on Wednesday, reaching their lowest level in around two weeks amid speculation weekly supply data due later in the session will show a large build in U.S. fuel supplies. After markets closed Tuesday, the American Petroleum Institute said that U.S. oil inventories declined by 4.0 million barrels in the week ended September 29 as refiners raised output. However, the API report also showed a gain of 4.9 million barrels in gasoline stocks, while distillate stocks fell by 584,000 barrels. Crude prices have rallied in recent weeks after data showed strong compliance from major producers with their supply cut agreement and a plethora of energy agencies suggested global demand is increasing. For more on this story visit investing.com or click <http://bit.ly/2fLkVoQ>

## 12 MONTH CANDLESTICK (WEEKLY)



## Prompt Natural Gas (NG) Daily Sentiment

**BEARISH**



RESISTANCE  
2.98 & 3.02  
SUPPORT  
2.90 & 2.86

## Trading Summary

### NATURAL GAS

Futures	Close	Change
NG	2.940	0.045
Volume	386,175	(347,068)
Open Int.	1,392,172	(2,391)

### CRUDE AND GASOLINE

Futures	Close	Change
Crude	49.98	(0.44)
RBOB	1.5805	0.0150
Crude/NG	17.00	(0.42)

### METALS

Futures	Close	Change
Gold	1,273.70	4.10

### EQUITIES

Exchange	Close	Change
DOW	22,661.64	19.97
S&P 500	2,537.74	3.16

### CURRENCY

Currency	Close	Change
EUR/USD	1.1760	0.0016
USD/CND	1.2540	0.0074

## Contact Us



**Mansfield Energy Corp**  
1025 Airport Pkwy  
Gainesville, GA 30501  
  
www.mansfield.energy  
info@mansfieldoil.com

Phone: (800) 695-6626

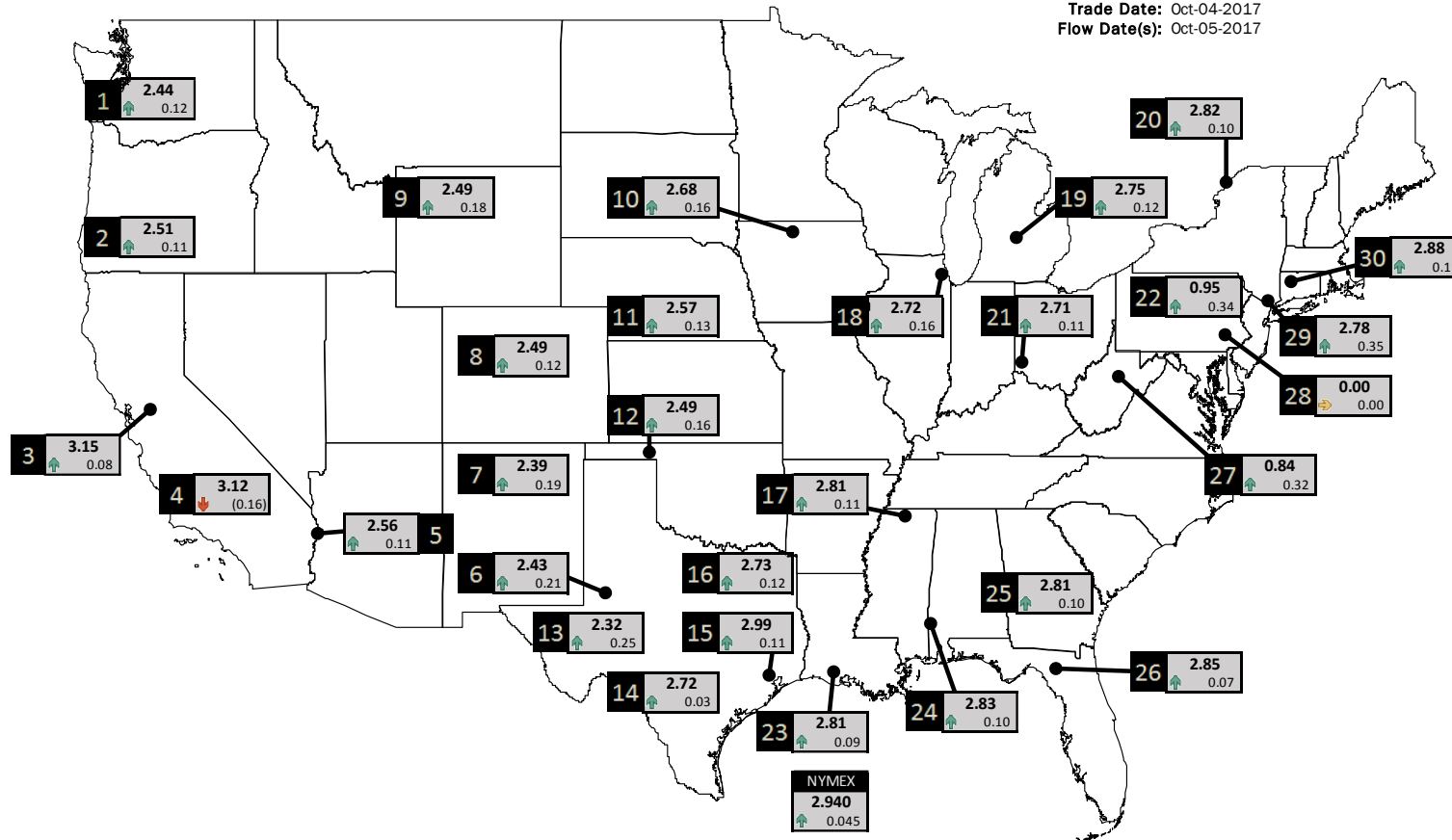




# NATURAL GAS NEWS

## PHYSICAL SPOT NATURAL GAS PRICE MAP

Trade Date: Oct-04-2017  
Flow Date(s): Oct-05-2017



ID	DAILY INDEX	PRICE	CHANGE
1	Stanfield	2.44	0.12
2	Malin	2.51	0.11
3	PG&E - Citygate	3.15	0.08
4	Socal-Citygate	3.12	(0.16)
5	SoCal Border	2.56	0.11
6	Waha	2.43	0.21
7	EPSJ Blanco Pool	2.39	0.19
8	Opal Plant Tailgate	2.49	0.12
9	NWP-Wyoming	2.49	0.18
10	Ventura	2.68	0.16

ID	DAILY INDEX	PRICE	CHANGE
11	NGPL-Midcont Pool	2.57	0.13
12	Panhandle	2.49	0.16
13	EP-Permian	2.32	0.25
14	TGP-ZO	2.72	0.03
15	Houston Ship Channel	2.99	0.11
16	NGPL-TXOK	2.73	0.12
17	TETCO-M1.30	2.81	0.11
18	Chicago Citygates	2.72	0.16
19	Michcon	2.75	0.12
20	Iroquois (into)	2.82	0.10

ID	DAILY INDEX	PRICE	CHANGE
21	REX E-ANR	2.71	0.11
22	Leidy-Transco	0.95	0.34
23	Henry	2.81	0.09
24	Transco-85	2.83	0.10
25	Sonat-ZO South	2.81	0.10
26	FGT-Z3	2.85	0.07
27	Dominion-South	0.84	0.32
28	Transco-Z6 (non-NY)	0.00	0.00
29	Transco-Z6 (NY)	2.78	0.35
30	Iroquois-Z2	2.88	0.11

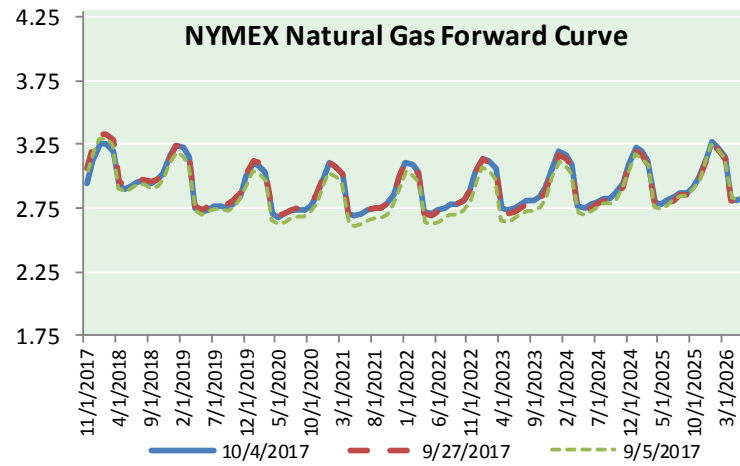
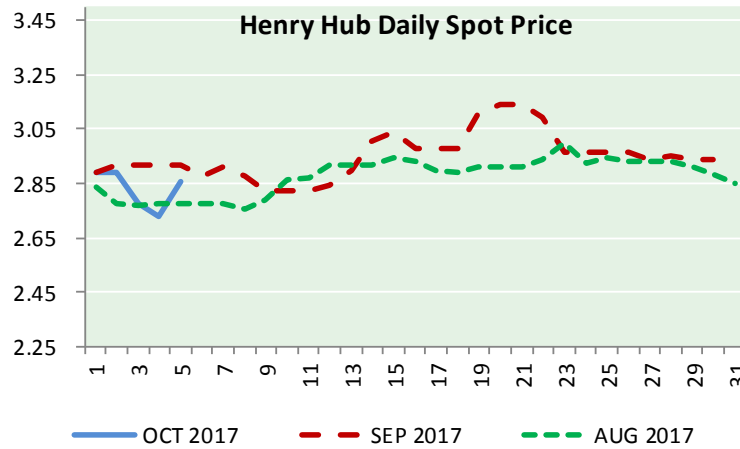
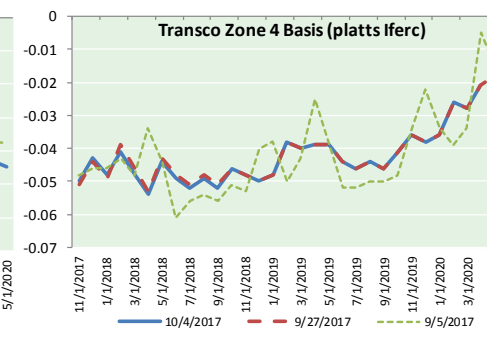
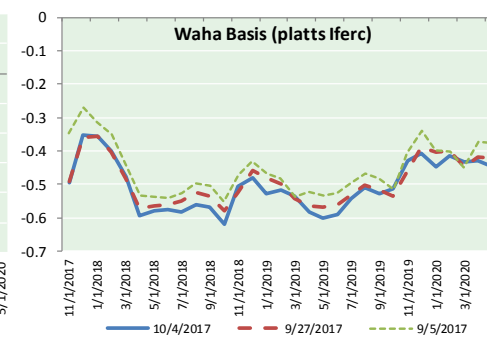
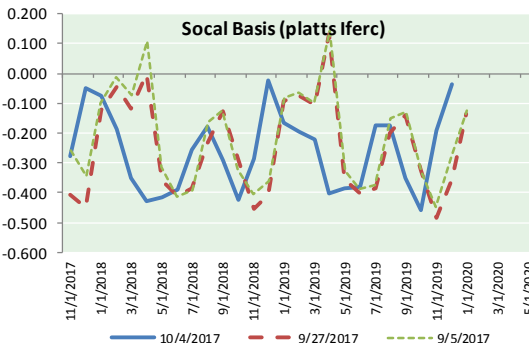
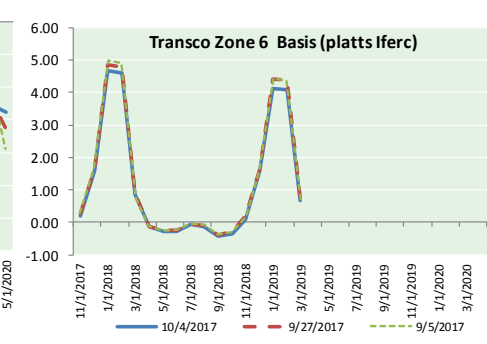
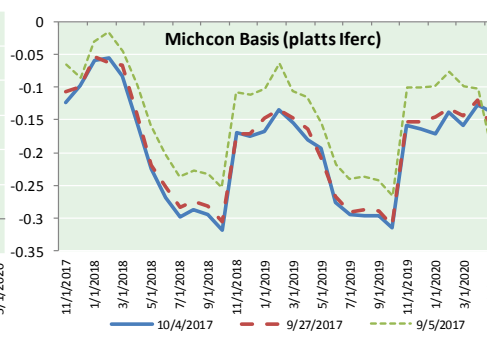
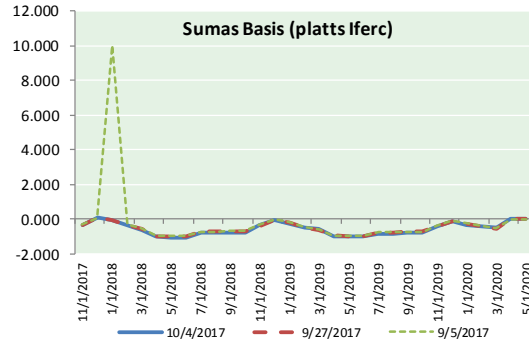
DISCLAIMER: The content herein is privileged and confidential. Content is presented for informational purposes and is a reflection of the market opinions of its authors subject to change without notice. Content is derived from sources believed to be accurate at the time of release but carries no guarantee of accuracy or completeness. Mansfield Energy Corp and its clients may or may not take positions similar or opposite those discussed herein. The reader should realize that the trading of commodities involves risk, and the reader assumes all responsibility for the risk of financial losses.





# NATURAL GAS NEWS

## NATURAL GAS BASIS FUTURES, HENRY HUB SPOT PRICES, AND FORWARD CURVE



### CME NG Option Prices

#### ATM Call

Month	Strike	Close	Imp Vol
Nov-17	2.950	0.084	30.0
Dec-17	3.150	0.151	33.7
Jan-18	3.250	0.237	38.4
Feb-18	3.250	0.304	42.2
Mar-18	3.200	0.353	44.0
Apr-18			
May-18			
Jun-18			
Jul-18			
Aug-18			
Sep-18			
Oct-18			
Nov-18			
Dec-18			
Jan-19			
Feb-19			
Mar-19			

### CME NG Option Prices

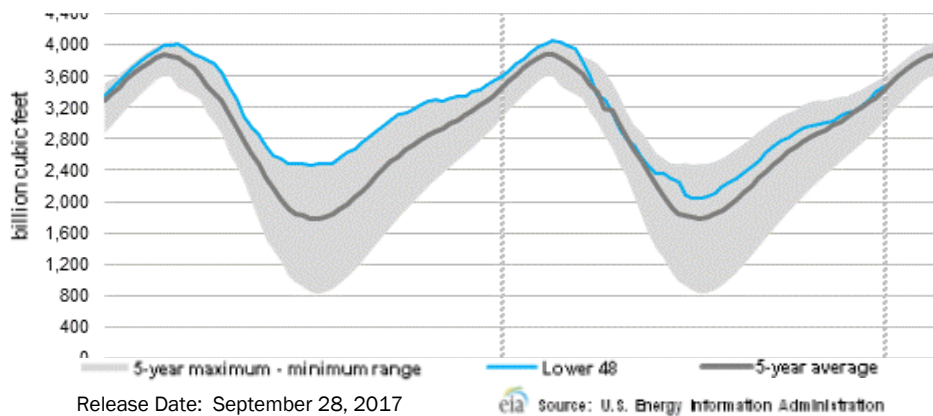
#### ATM Put

Month	Strike	Close	Imp Vol
Nov-17	2.950	0.097	33.7
Dec-17	3.150	0.183	35.6
Jan-18	3.250	0.244	39.4
Feb-18	3.250	0.307	42.2
Mar-18	3.200	0.350	44.0
Apr-18			
May-18			
Jun-18			
Jul-18			
Aug-18			
Sep-18			
Oct-18			
Nov-18			
Dec-18			
Jan-19			
Feb-19			
Mar-19			



# NATURAL GAS NEWS

## WEEKLY GAS IN UNDERGROUND STORAGE WITH 5-YR RANGE



### Rig Count

Report Date: September 29, 2017

	Total	Change
US -	940	+5
CN -	213	(7)

### EIA Weekly NG Storage Estimates and Surveys for October 5, 2017

Range +42 to +68  
 ARM – +44  
 PIRA – +42  
 Reuters – +51

EIA ACTUAL – Due Today At 10:30 AM EST / 9:30 AM CPT

### Total Working Gas In Storage

**3,466 BCF**

+58 BCF (LAST WEEK)  
 (127) BCF (LAST YEAR)  
 +41 BCF (5-YR AVG)

### U.S. Natural Gas Supply Gas Week 9/21 - 9/27

Average daily values (BCF/d):  
 Last Year (BCF/d)  
 Dry Production – +69.9  
 Total Supply – +75.9  
 Last Week (BCF/d)  
 Dry Production – +74.5  
 Total Supply – +80.2

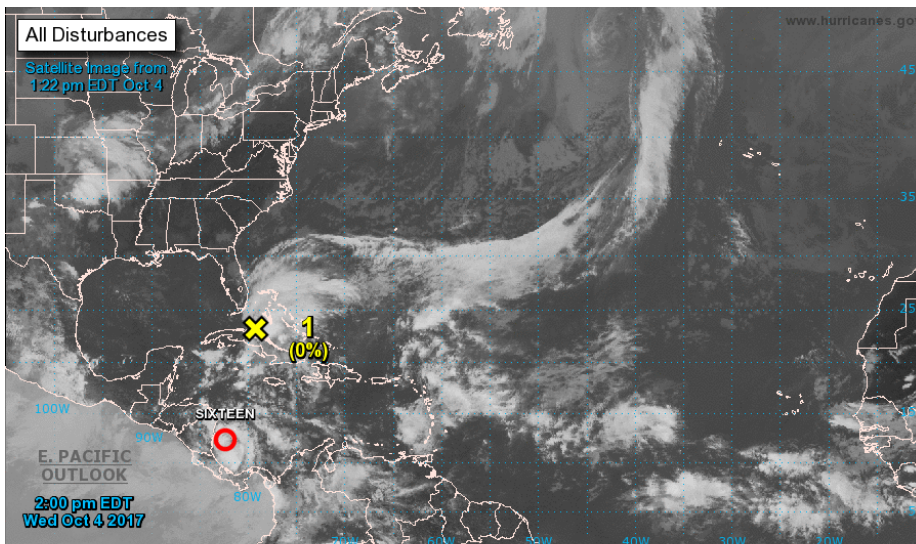
[NEXT REPORT ON OCT 5]

### U.S. Natural Gas Demand Gas Week 9/21 - 9/27

Average daily values (BCF/d):  
 Last Year (BCF/d)  
 Power – +30.9  
 Total Demand – +66.9  
 Last Week (BCF/d)  
 Power – +31.2  
 Total Demand – +71.2

[NEXT REPORT ON OCT 5]

## TROPICAL STORM ACTIVITY— ATLANTIC



For the North Atlantic...Caribbean Sea and the Gulf of Mexico:

The National Hurricane Center is issuing advisories on newly formed Tropical Depression Sixteen, located over the southwestern Caribbean Sea.

1. A trough of low pressure located over west-central Cuba and extending northward into the Straits of Florida is producing a broad area of disorganized showers and thunderstorms across the southern peninsula of Florida, the northwestern Bahamas, and the adjacent Atlantic waters. Although significant tropical development of this system is still not expected due to strong upper-level winds, brief squalls will likely produce locally heavy rainfall and strong gusty winds over portions of the Bahamas and the southern Florida peninsula during the next couple of days.

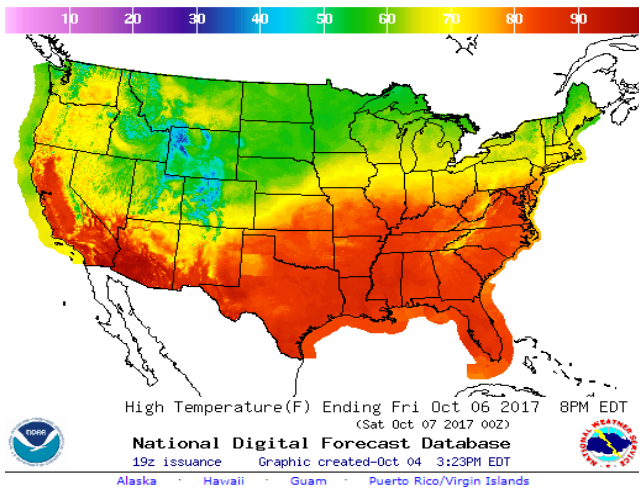
- \* Formation chance through 48 hours...low...near 0 percent.
- \* Formation chance through 5 days...low...near 0 percent.

Public Advisories on Tropical Depression Sixteen are issued under WMO header WTNT31 KNHC and under AWIPS header MIATCPAT1. Forecast/Advisories on Tropical Depression Sixteen are issued under WMO header WTNT21 KNHC and under AWIPS header MIATCMAT1.

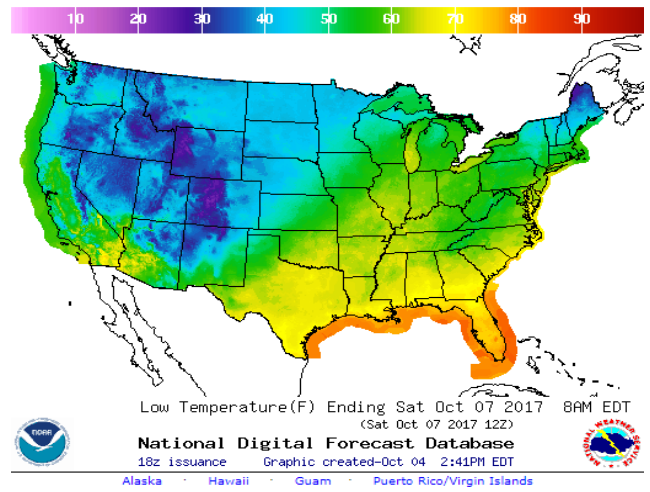
Forecaster Blake

WEATHER – HIGH / LOW TEMPERATURE TOMORROW

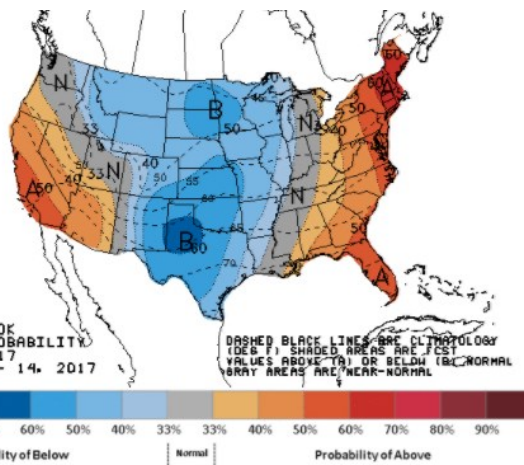
HIGH Temperature



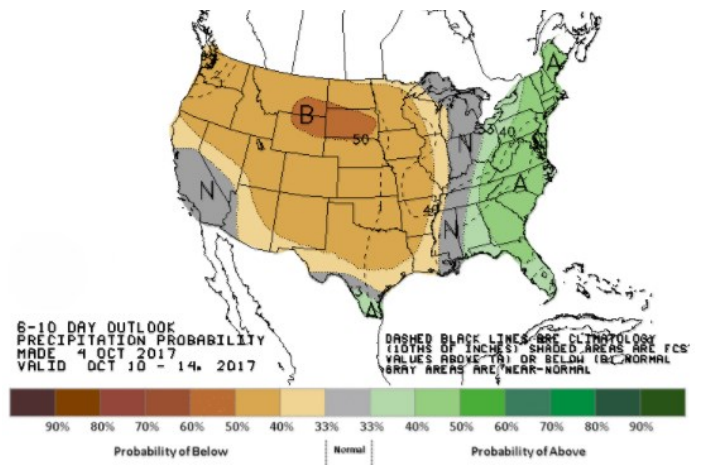
LOW Temperature



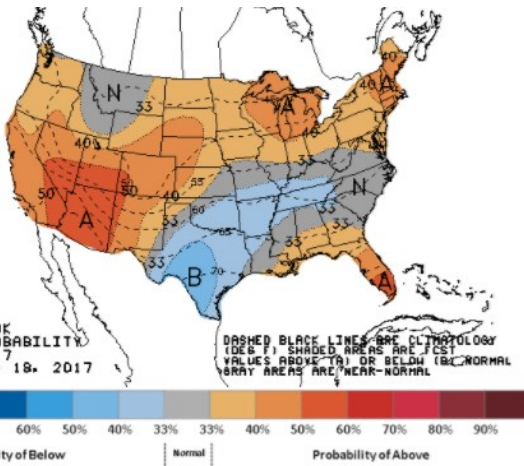
WEATHER – 6 TO 10 DAY OUTLOOK – NOAA  
Temperature



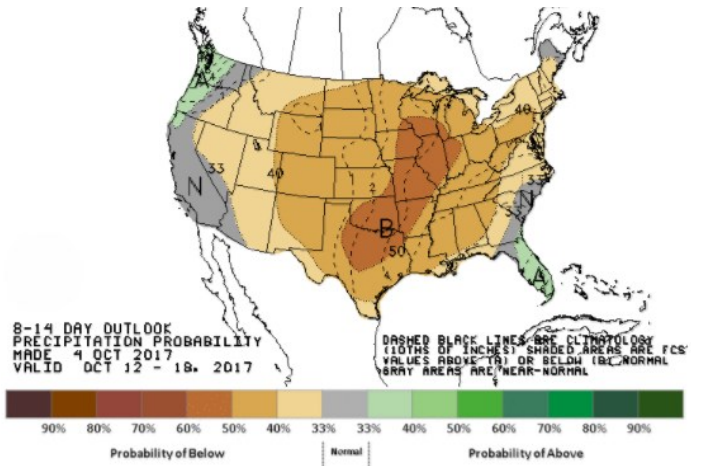
Precipitation



WEATHER – 8 TO 14 DAY OUTLOOK – NOAA  
Temperature



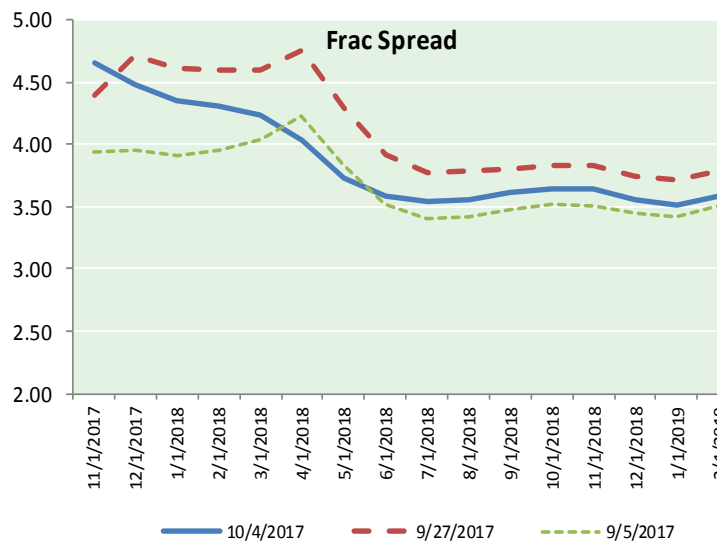
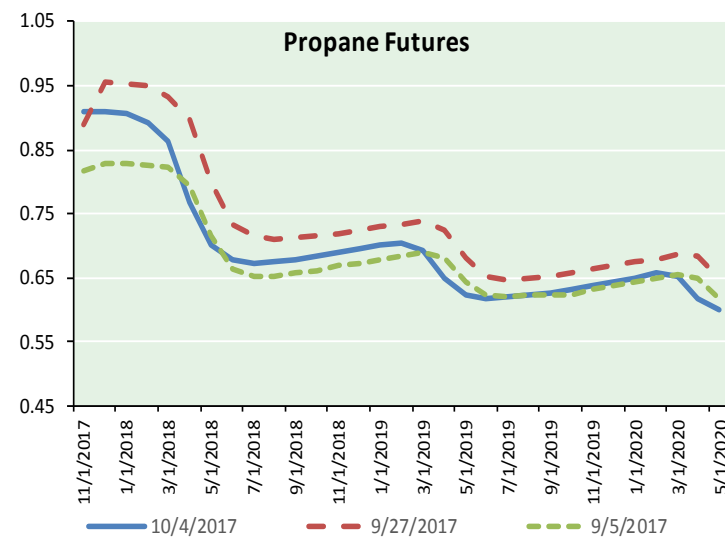
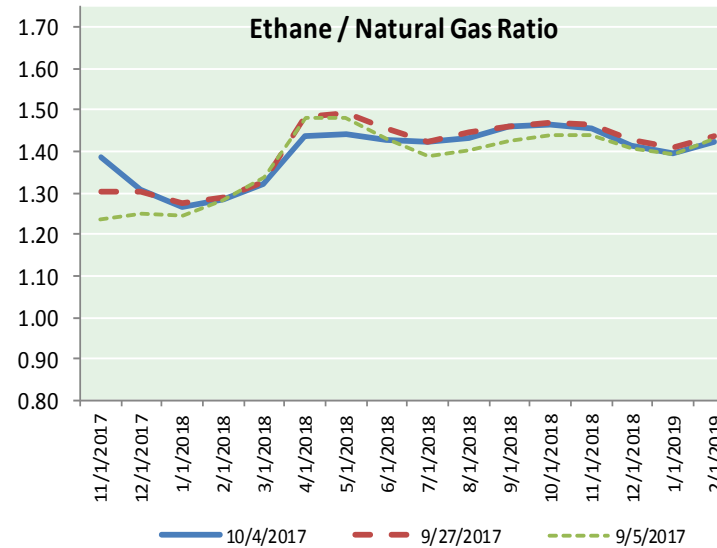
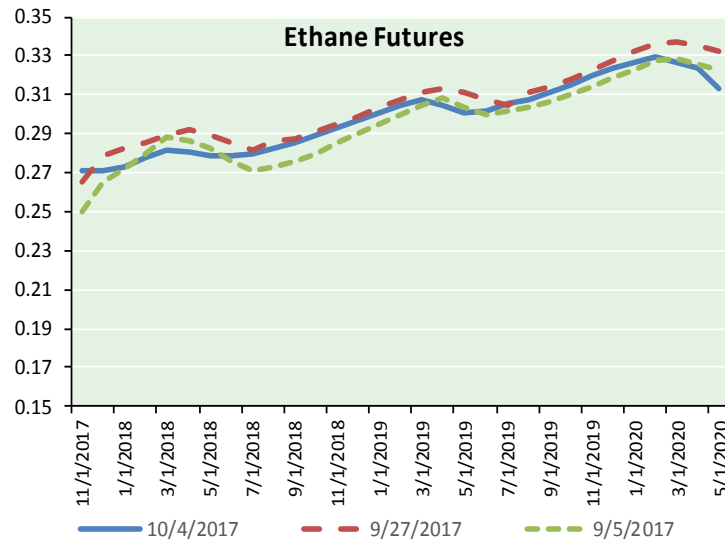
Precipitation



# NATURAL GAS NEWS



## ETHANE FUTURES, NG/ETHANE RATIO, PROPANE FUTURES, AND THE FRAC SPREAD



### CME Future Prices

#### Ethane (C2)

##### Non-LDH— Mont Belvieu

Month	Close	Change
Nov-17	0.271	0.003
Dec-17	0.271	0.004
Jan-18	0.273	0.004
Feb-18	0.278	0.004
Mar-18	0.282	0.003
Apr-18	0.280	0.003
May-18	0.279	0.003
Jun-18	0.279	0.002
Jul-18	0.280	0.002
Aug-18	0.282	0.002
Sep-18	0.285	0.002
Oct-18	0.289	0.002

1YR Strip 0.279 0.003

### CME Future Prices

#### Propane (C3)

##### Non-LDH— Mont Belvieu

Month	Close	Change
Nov-17	0.909	0.039
Dec-17	0.911	0.041
Jan-18	0.906	0.038
Feb-18	0.893	0.036
Mar-18	0.863	0.034
Apr-18	0.767	0.025
May-18	0.701	0.020
Jun-18	0.679	0.017
Jul-18	0.673	0.016
Aug-18	0.675	0.015
Sep-18	0.679	0.014
Oct-18	0.684	0.014

1YR Strip 0.778 0.026

# NATURAL GAS NEWS



## Prompt WTI (CL) Crude Daily Sentiment

**BULLISH**



RESISTANCE  
50.75 & 51.05  
SUPPORT  
49.60 & 49.23

### FOLLOW US ON TWITTER:



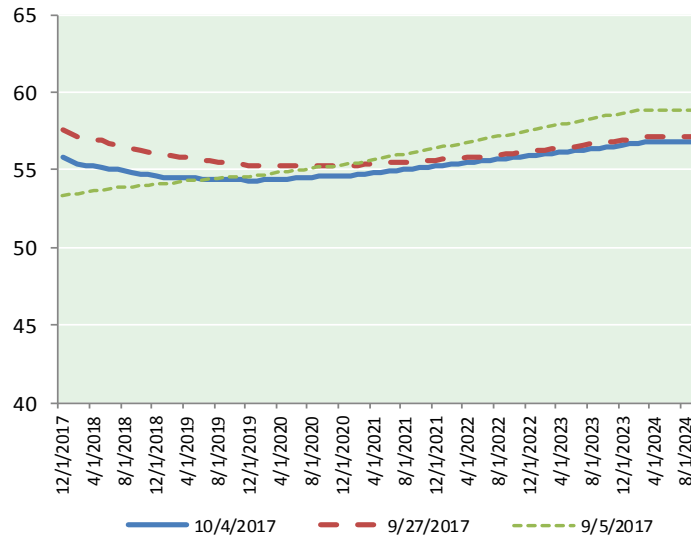
@MPG\_NatGasNews

## NYMEX Brent (BZ)

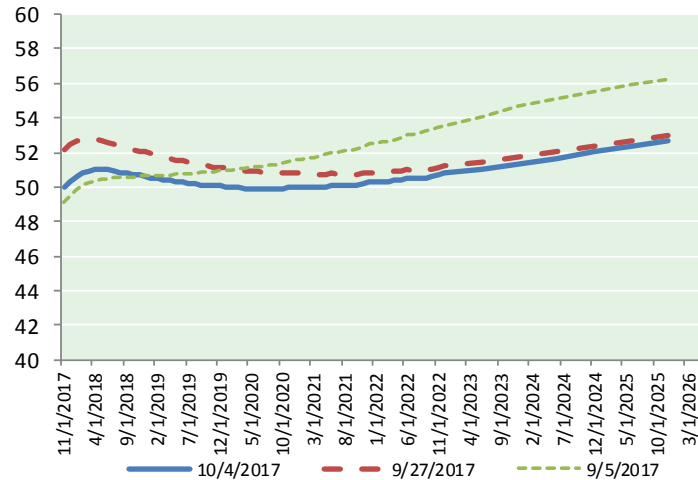
### Futures

Month	Close	Change
Dec-17	55.80	(0.20)
Jan-18	55.60	(0.18)
Feb-18	55.41	(0.18)
Mar-18	55.29	(0.18)
Apr-18	55.22	(0.16)
May-18	55.16	(0.13)
Jun-18	55.08	(0.11)
Jul-18	55.01	(0.10)
Aug-18	54.92	(0.09)
Sep-18	54.83	(0.07)
Oct-18	54.75	(0.06)
Nov-18	54.68	(0.05)
Dec-18	54.61	(0.04)
Jan-19	54.55	(0.03)
Feb-19	54.53	(0.02)
Mar-19	54.50	(0.02)
Apr-19	54.50	(0.02)
May-19	54.46	(0.01)
Jun-19	54.39	0.00
Jul-19	54.40	0.01
Aug-19	54.38	0.03
Sep-19	54.37	0.05
Oct-19	54.39	0.06
Nov-19	54.34	0.07
1YR Strip 2017	55.15	(0.13)
5YR Strip	54.88	0.08

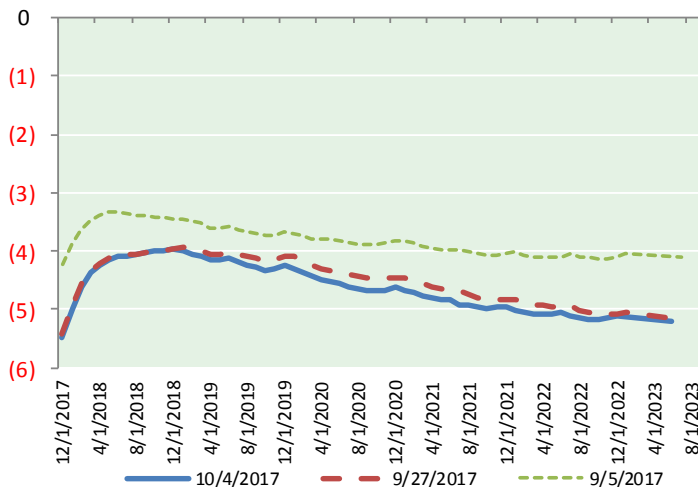
## BRENT CRUDE FORWARD CURVE



## WTI CRUDE FORWARD CURVE



## WTI-BRENT SPREAD



## FRAC Spread

### Specifications

Ethane : 42%	66,500 btu/g
Propane: 28%	90,830 btu/g
Butane: 11%	102,916 btu/g
Iso-Butane: 6%	98,935 btu/g
Natural Gasoline: 13%	115,021 btu/g

## Prompt NGL Futures

### (\$/gallon)

	Nov-17	Close	Change
Butane	1.040	1.040	0.027
Iso-Butane	1.038	1.038	0.019
Nat Gasoline	1.179	1.179	0.002

## NYMEX WTI (CL) Futures

Month	Close	Change
Nov-17	49.98	(0.44)
Dec-17	50.32	(0.42)
Jan-18	50.60	(0.39)
Feb-18	50.79	(0.34)
Mar-18	50.92	(0.30)
Apr-18	50.99	(0.26)
May-18	51.01	(0.22)
Jun-18	50.99	(0.19)
Jul-18	50.93	(0.16)
Aug-18	50.86	(0.13)
Sep-18	50.80	(0.10)
Oct-18	50.74	(0.08)
Nov-18	50.69	(0.06)
Dec-18	50.64	(0.05)
Jan-19	50.55	(0.04)
Feb-19	50.48	(0.02)
Mar-19	50.41	0.00
Apr-19	50.36	0.02
May-19	50.31	0.04
Jun-19	50.28	0.05
Jul-19	50.21	0.06
Aug-19	50.15	0.07
Sep-19	50.10	0.08
Oct-19	50.06	0.09
1YR Strip 2017	50.74	(0.25)
5YR Strip	50.30	0.03