

# NATURAL GAS



NEWS

OCTOBER 25, 2017

## Prior Day's NYMEX

### Nov-17 Contract (CT)



## NYMEX NG Futures

Month	Close	Change
Nov-17	2.974	(0.017)
Dec-17	3.135	(0.021)
Jan-18	3.257	(0.023)
Feb-18	3.260	(0.024)
Mar-18	3.216	(0.024)
Apr-18	2.989	(0.003)
May-18	2.964	(0.002)
Jun-18	2.992	(0.002)
Jul-18	3.020	(0.002)
Aug-18	3.021	(0.002)
Sep-18	3.002	(0.003)
Oct-18	3.025	(0.002)
Nov-18	3.077	(0.003)
Dec-18	3.208	(0.003)
Jan-19	3.287	(0.003)
Feb-19	3.255	(0.002)
Mar-19	3.178	0.000
Apr-19	2.790	0.004
May-19	2.742	0.003
Jun-19	2.763	0.002
Jul-19	2.785	0.002
Aug-19	2.785	0.002
Sep-19	2.768	0.002
Oct-19	2.790	0.000
1YR Strip	3.071	(0.010)
2017	3.055	(0.019)
5YR Strip	2.927	(0.004)

## IN THE NEWS

**Attorney General Madigan Files Lawsuit Against Peoples Gas Over Natural Gas Leak** — The website of the Illinois Attorney General reported: Chicago — Attorney General Lisa Madigan today filed a lawsuit against The Peoples Gas Light and Coke Company (Peoples Gas) over a natural gas leak that contaminated one of central Illinois' largest fresh water sources, impacting nearby

- **Attorney General Madigan Files Lawsuit Against Peoples Gas Over Natural Gas Leak**
- **Montana-based firm will help repair electrical infrastructure in Puerto Rico**

residents' private wells. Madigan filed the complaint and motion for preliminary injunction order in Champaign County Circuit Court against Peoples Gas for a natural gas leak at the company's underground natural gas storage facility near the village of Fisher, Ill. Natural gas is made up primarily of methane, is highly flammable and can cause asphyxiation in enclosed spaces. The injunction order will require Peoples to identify the cause of the leak and ensure residents have access to safe drinking water. For more visit [illinoisattorneygeneral.gov](http://illinoisattorneygeneral.gov) or click <http://bit.ly/2y3PGRx>

**Montana-based firm will help repair electrical infrastructure in Puerto Rico** — The Washington Examiner reported: Whitefish Energy, a small Montana-based company, announced last week it signed a \$300 million contract with the Puerto Rico Electric Power Authority as the island copes with the aftermath of Hurricane Maria, which has left many on the island without power. Although the company only had two full-time employees the day Hurricane Maria hit the island, the company said Monday 280 workers are in Puerto Rico, with approximately 10 to 20 people joining the team each day. The company will be repairing and replacing parts of the territory's electrical infrastructure. "The fact that there are so many utilities with experience in this and a huge track record of helping each other out, it is at least odd why would go to Whitefish," Susan F. Tierney. Ramos has challenged the concerns. "The doubts that have been raised about Whitefish, from my point of view, are completely unfounded," Ramos said. For more visit [washingtonexaminer.com](http://washex.am/2yLt9WO) or click <http://washex.am/2yLt9WO>

## 12 MONTH CANDLESTICK (WEEKLY)



## Prompt Natural Gas (NG) Daily Sentiment

**BEARISH**



RESISTANCE  
2.99 & 3.02  
SUPPORT  
2.95 & 2.93

## Trading Summary

### NATURAL GAS

Futures	Close	Change
NG	2.974	(0.017)
Volume	373,498	(324,751)
Open Int.	1,352,256	(392)

### CRUDE AND GASOLINE

Futures	Close	Change
Crude	52.47	0.57
RBOB	1.7155	0.0372
Crude/NG	16.74	0.29

### METALS

Futures	Close	Change
Gold	1,275.00	(4.40)

### EQUITIES

Exchange	Close	Change
DOW	23,273.96	(54.67)
S&P 500	2,569.13	4.15

### CURRENCY

Currency	Close	Change
EUR/USD	1.1761	0.0012
USD/CND	1.2704	0.0028

## Contact Us



**Mansfield Energy Corp**  
1025 Airport Pkwy  
Gainesville, GA 30501  
  
[www.mansfield.energy](http://www.mansfield.energy)  
[info@mansfieldoil.com](mailto:info@mansfieldoil.com)

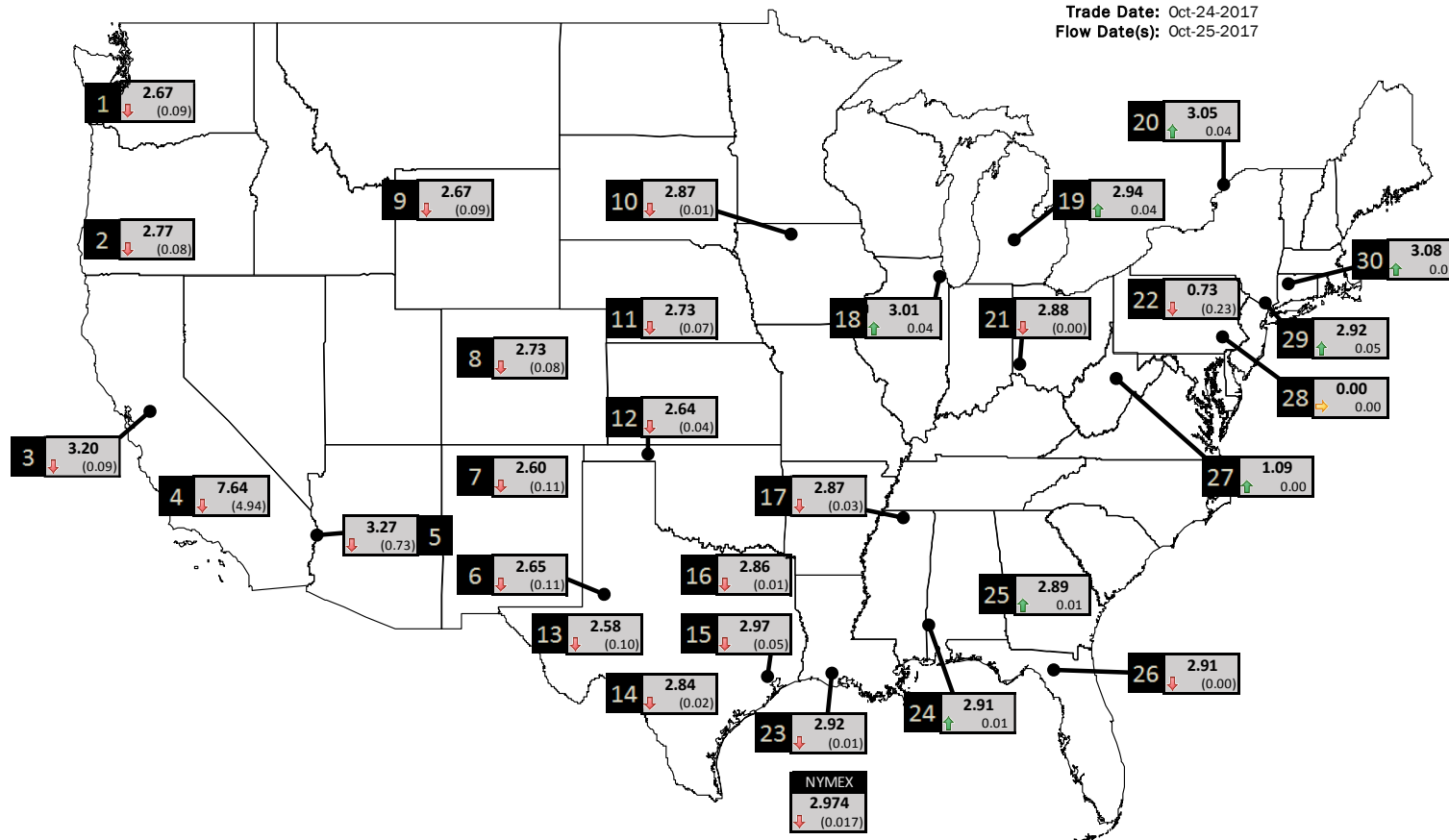
Phone: (800) 695-6626



# NATURAL GAS NEWS

## PHYSICAL SPOT NATURAL GAS PRICE MAP

Trade Date: Oct-24-2017  
Flow Date(s): Oct-25-2017



ID	DAILY INDEX	PRICE	CHANGE
1	Stanfield	2.67	(0.09)
2	Malin	2.77	(0.08)
3	PG&E - Citygate	3.20	(0.09)
4	SoCal-Citygate	7.64	(4.94)
5	SoCal Border	3.27	(0.73)
6	Waha	2.65	(0.11)
7	EPSJ Blanco Pool	2.60	(0.11)
8	Opal Plant Tailgate	2.73	(0.08)
9	NWP-Wyoming	2.67	(0.09)
10	Ventura	2.87	(0.01)

ID	DAILY INDEX	PRICE	CHANGE
11	NGPL-Midcont Pool	2.73	(0.07)
12	Panhandle	2.64	(0.04)
13	EP-Permian	2.58	(0.10)
14	TGP-ZO	2.84	(0.02)
15	Houston Ship Channel	2.97	(0.05)
16	NGPL-TXOK	2.86	(0.01)
17	TETCO-M1.30	2.87	(0.03)
18	Chicago Citygates	3.01	0.04
19	Michcon	2.94	0.04
20	Iroquois (into)	3.05	0.04

ID	DAILY INDEX	PRICE	CHANGE
21	REX E-ANR	2.88	(0.00)
22	Leidy-Transco	0.73	(0.23)
23	Henry	2.92	(0.01)
24	Transco-85	2.91	0.01
25	Sonat-ZO South	2.89	0.01
26	FGT-Z3	2.91	(0.00)
27	Dominion-South	1.09	0.00
28	Transco-Z6 (non-NY)	0.00	0.00
29	Transco-Z6 (NY)	2.92	0.05
30	Iroquois-Z2	3.08	0.01

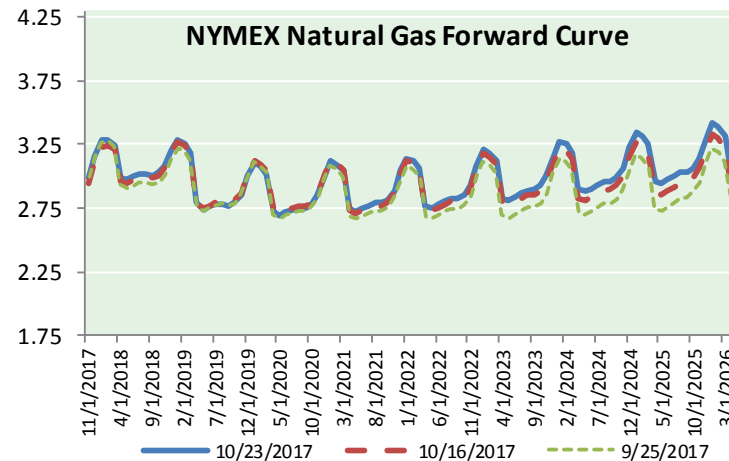
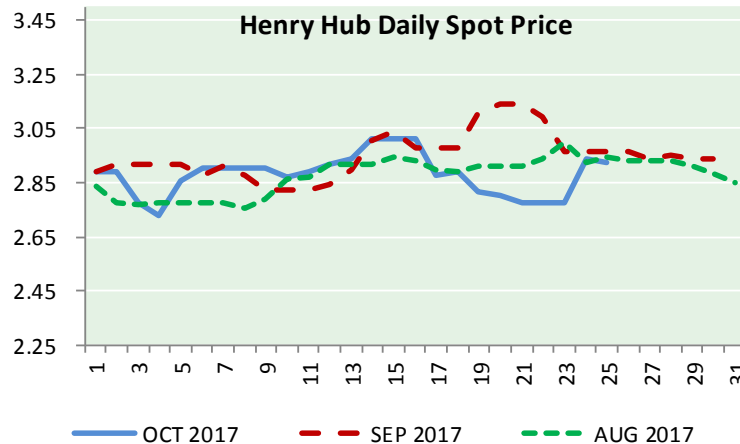
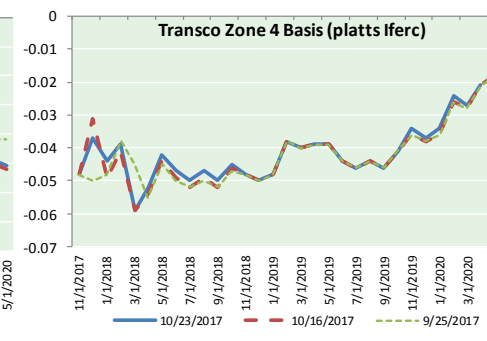
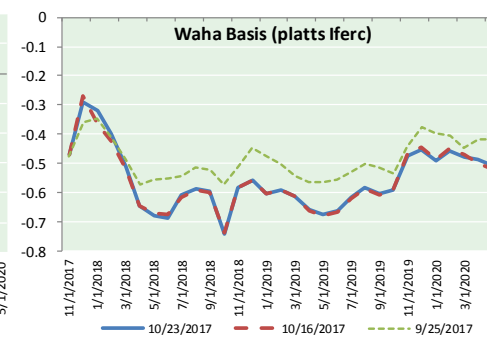
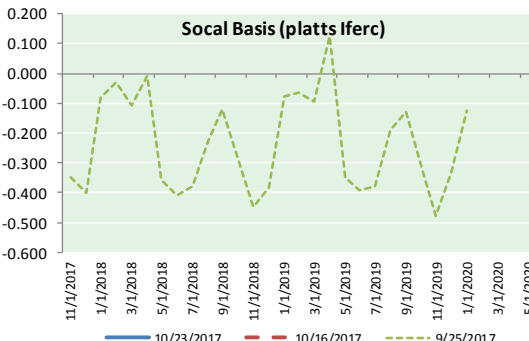
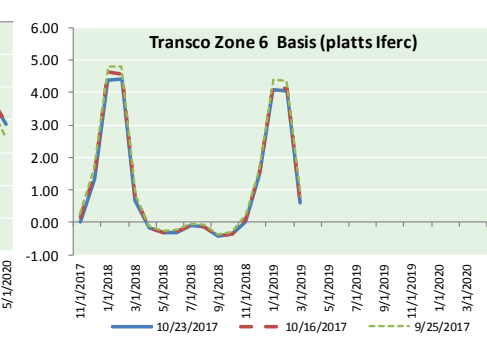
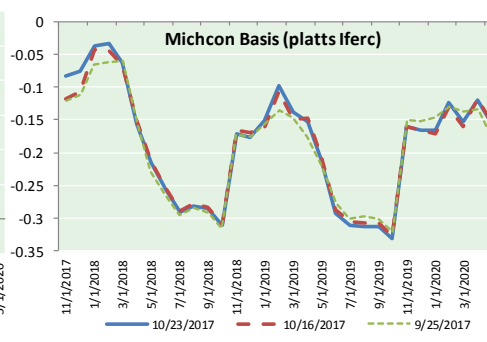
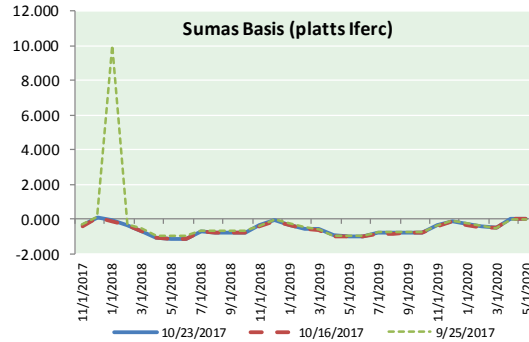
DISCLAIMER: The content herein is privileged and confidential. Content is presented for informational purposes and is a reflection of the market opinions of its authors subject to change without notice. Content is derived from sources believed to be accurate at the time of release but carries no guarantee of accuracy or completeness. Mansfield Energy Corp and its clients may or may not take positions similar or opposite those discussed herein. The reader should realize that the trading of commodities involves risk, and the reader assumes all responsibility for the risk of financial losses.





# NATURAL GAS NEWS

## NATURAL GAS BASIS FUTURES, HENRY HUB SPOT PRICES, AND FORWARD CURVE



### CME NG Option Prices

#### ATM Call

Month	Strike	Close	Imp Vol
Nov-17	2.950	0.028	60.0
Dec-17	3.100	0.147	39.4
Jan-18	3.250	0.239	46.8
Feb-18	3.250	0.296	46.8
Mar-18	3.200	0.345	47.8
Apr-18			
May-18			
Jun-18			
Jul-18			
Aug-18			
Sep-18			
Oct-18			
Nov-18			
Dec-18			
Jan-19			
Feb-19			
Mar-19			

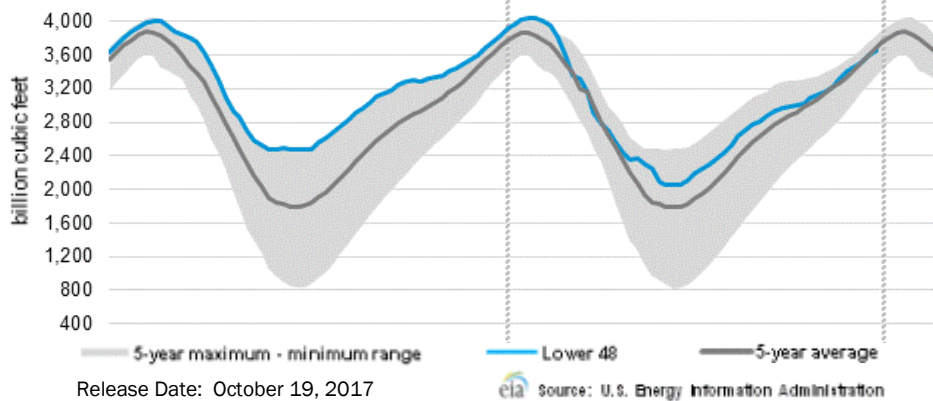
### CME NG Option Prices

#### ATM Put

Month	Strike	Close	Imp Vol
Nov-17	2.950	0.026	22.5
Dec-17	3.100	0.147	39.4
Jan-18	3.250	0.224	39.4
Feb-18	3.250	0.288	42.2
Mar-18	3.200	0.332	44.0
Apr-18			
May-18			
Jun-18			
Jul-18			
Aug-18			
Sep-18			
Oct-18			
Nov-18			
Dec-18			
Jan-19			
Feb-19			
Mar-19			



WEEKLY GAS IN UNDERGROUND STORAGE WITH 5-YR RANGE



Rig Count

Report Date: October 20, 2017

	Total	Change
US -	913	(15)
CN -	202	(10)

EIA Storage History for 42nd Week of Year (Due to Report Oct 26)

Year	Week Ending	BCF
2013	Oct 18, 2013	+86
2014	Oct 17, 2014	+95
2015	Oct 16, 2015	+82
2016	Oct 14, 2016	+77
ESTIMATE -		+65

Total Working Gas In Storage

**3,646 BCF**

+51 BCF (LAST WEEK)  
 (179) BCF (LAST YEAR)  
 (35) BCF (5-YR AVG)

U.S. Natural Gas Supply Gas Week 10/12- 10/19

Average daily values (BCF/D):  
 Last Year (BCF/d)  
 Dry Production - +70.2  
 Total Supply - +75.6  
 Last Week (BCF/d)  
 Dry Production - +72.4  
 Total Supply - +78.4

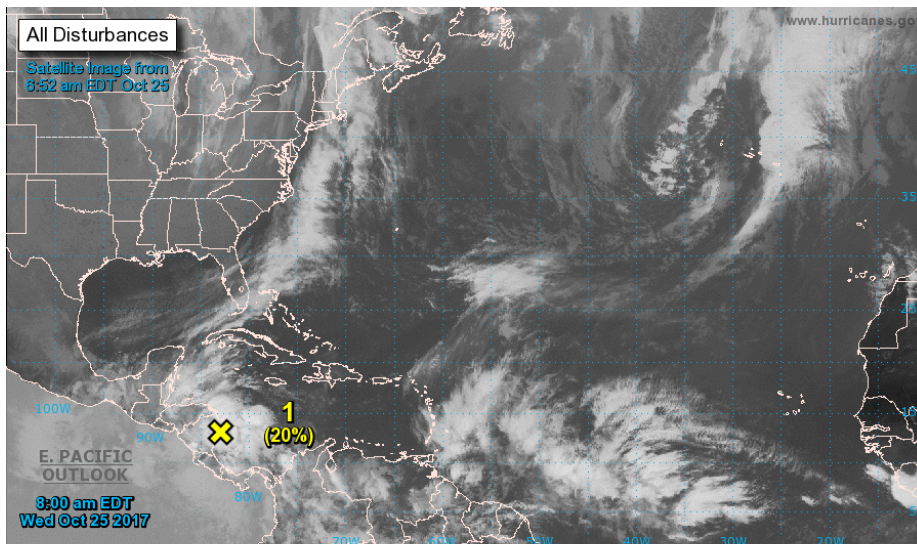
[NEXT REPORT ON OCT 26]

U.S. Natural Gas Demand Gas Week 10/12 - 10/19

Average daily values (BCF/D):  
 Last Year (BCF/d)  
 Power - +24.3  
 Total Demand - +65.6  
 Last Week (BCF/d)  
 Power - +28.7  
 Total Demand - +70.4

[NEXT REPORT ON OCT 26]

TROPICAL STORM ACTIVITY- ATLANTIC

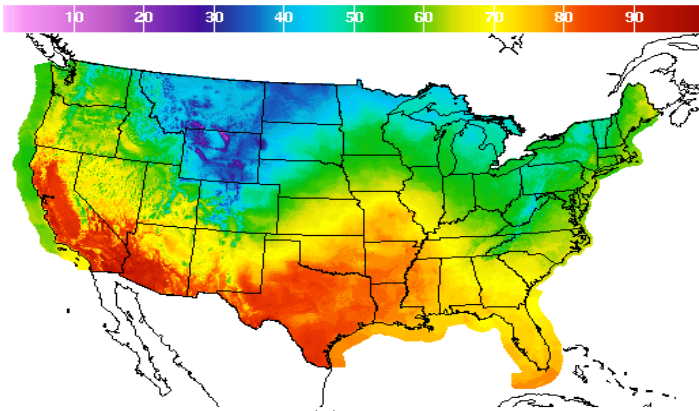


Tropical Weather Outlook  
 NWS National Hurricane Center Miami FL  
 800 AM EDT Wed Oct 25 2017

For the North Atlantic...Caribbean Sea and the Gulf of Mexico:  
 1. A broad area of low pressure located over the western Caribbean Sea continues to produce disorganized showers and thunderstorms over Nicaragua, Honduras, and the adjacent waters. Close proximity to land is likely to limit development of this system for the next day or so. However, environmental conditions are expected to be conducive for the system to become more organized later this week as it moves slowly northward over the northwestern Caribbean Sea. Strong upper-level winds associated with an approaching cold front will likely prevent further development by Sunday. Regardless of development, locally heavy rains are likely over portions of Central America and Cuba during the next several days.  
 \* Formation chance through 48 hours...low...20 percent.  
 \* Formation chance through 5 days...medium...40 percent.  
 Forecaster Zelinsky

WEATHER – HIGH / LOW TEMPERATURE TOMORROW

HIGH Temperature



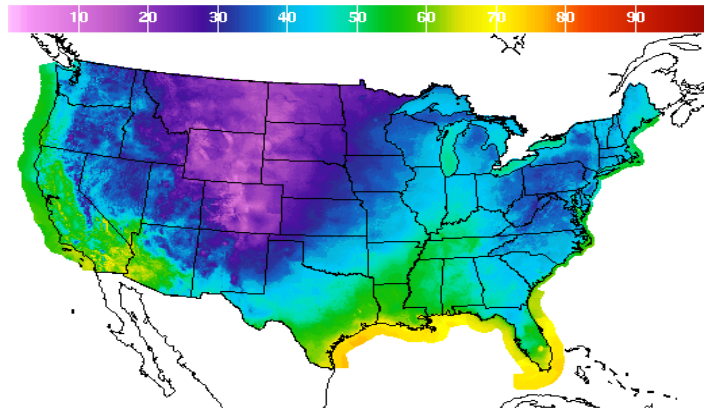
High Temperature(F) Ending Thu Oct 26 2017 8PM EDT  
(Fri Oct 27 2017 00Z)



National Digital Forecast Database  
11z issuance Graphic created-Oct 25 7:41AM EDT



LOW Temperature



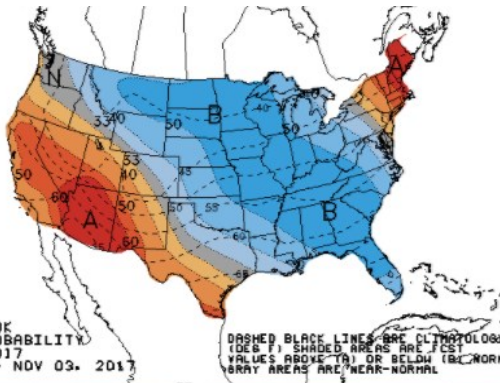
Low Temperature(F) Ending Fri Oct 27 2017 8AM EDT  
(Fri Oct 27 2017 12Z)



National Digital Forecast Database  
11z issuance Graphic created-Oct 25 7:24AM EDT

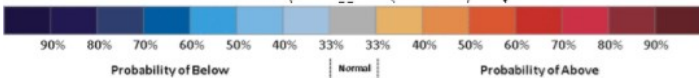


WEATHER – 6 TO 10 DAY OUTLOOK – NOAA  
Temperature

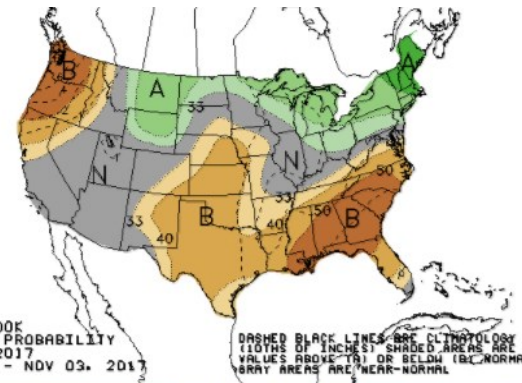


6-10 DAY OUTLOOK  
TEMPERATURE PROBABILITY  
MADE 24 OCT 2017  
VALID OCT 30 - NOV 03, 2017

DASHED BLACK LINES ARE CLIMATOLOGY  
(DEG F) SHADED AREAS ARE FCS  
VALUES ABOVE (A) OR BELOW (B) NORMAL  
GRAY AREAS ARE NEAR-NORMAL

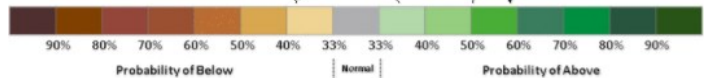


Precipitation

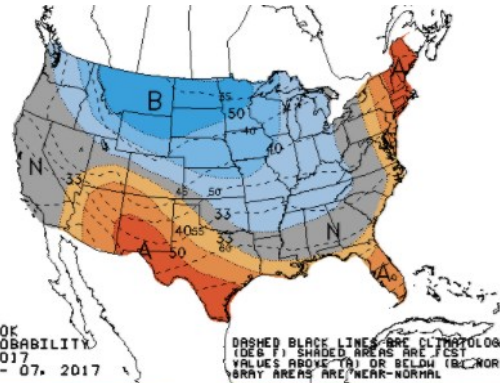


6-10 DAY OUTLOOK  
PRECIPITATION PROBABILITY  
MADE 24 OCT 2017  
VALID OCT 30 - NOV 03, 2017

DASHED BLACK LINES ARE CLIMATOLOGY  
(10THS OF INCHES) SHADED AREAS ARE FCS  
VALUES ABOVE (A) OR BELOW (B) NORMAL  
GRAY AREAS ARE NEAR-NORMAL

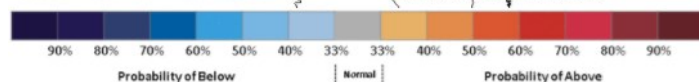


WEATHER – 8 TO 14 DAY OUTLOOK – NOAA  
Temperature

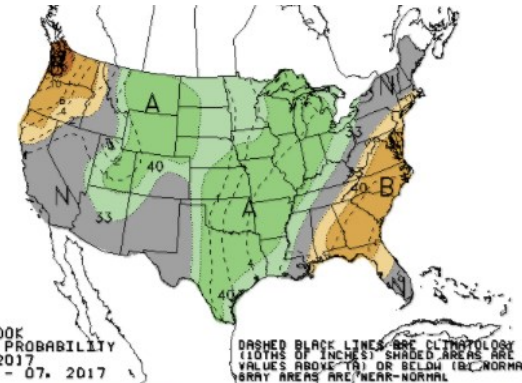


8-14 DAY OUTLOOK  
TEMPERATURE PROBABILITY  
MADE 24 OCT 2017  
VALID NOV 01 - 07, 2017

DASHED BLACK LINES ARE CLIMATOLOGY  
(DEG F) SHADED AREAS ARE FCS  
VALUES ABOVE (A) OR BELOW (B) NORMAL  
GRAY AREAS ARE NEAR-NORMAL

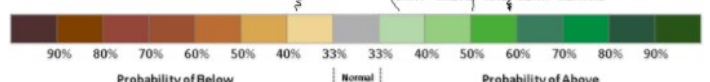


Precipitation



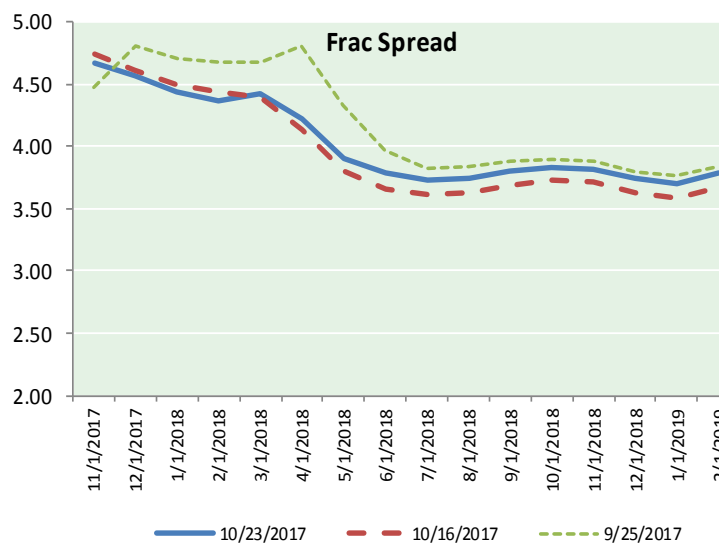
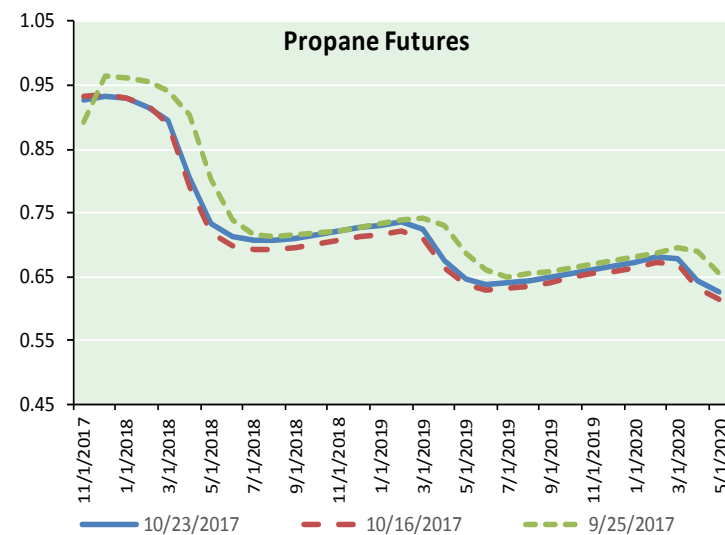
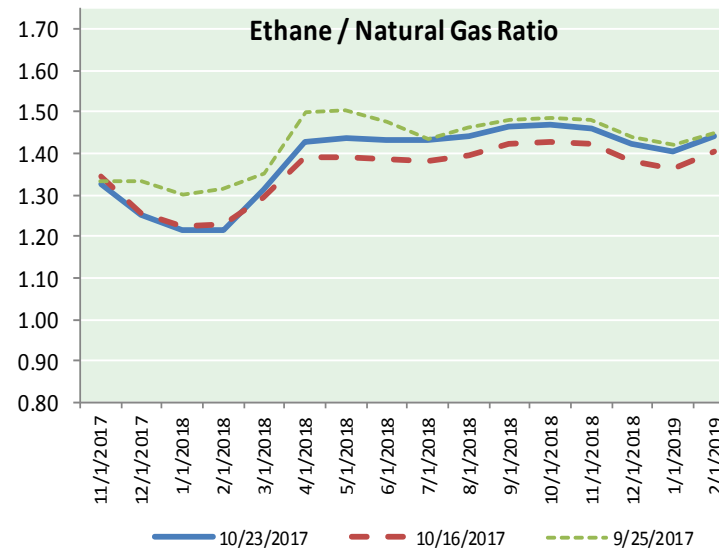
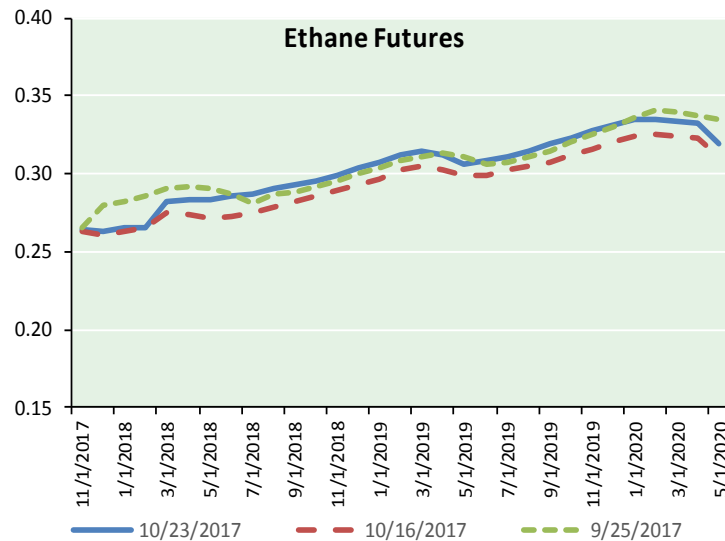
8-14 DAY OUTLOOK  
PRECIPITATION PROBABILITY  
MADE 24 OCT 2017  
VALID NOV 01 - 07, 2017

DASHED BLACK LINES ARE CLIMATOLOGY  
(10THS OF INCHES) SHADED AREAS ARE FCS  
VALUES ABOVE (A) OR BELOW (B) NORMAL  
GRAY AREAS ARE NEAR-NORMAL





ETHANE FUTURES, NG/ETHANE RATIO, PROPANE FUTURES, AND THE FRAC SPREAD



CME Future Prices

Ethane (C2)

Non-LDH— Mont Belvieu

	(cents/gallon)	
Month	Close	Change
Nov-17	0.264	0.002
Dec-17	0.263	0.006
Jan-18	0.265	0.006
Feb-18	0.265	0.007
Mar-18	0.283	(0.001)
Apr-18	0.284	(0.000)
May-18	0.284	(0.001)
Jun-18	0.285	(0.001)
Jul-18	0.288	(0.001)
Aug-18	0.290	(0.001)
Sep-18	0.293	(0.001)
Oct-18	0.296	(0.002)

1YR Strip 0.280 0.001

CME Future Prices

Propane (C3)

Non-LDH— Mont Belvieu

	(cents/gallon)	
Month	Close	Change
Nov-17	0.927	0.006
Dec-17	0.933	0.021
Jan-18	0.930	0.019
Feb-18	0.916	0.016
Mar-18	0.896	0.014
Apr-18	0.805	0.013
May-18	0.733	0.011
Jun-18	0.713	0.010
Jul-18	0.708	0.009
Aug-18	0.708	0.009
Sep-18	0.711	0.009
Oct-18	0.716	0.010

1YR Strip 0.808 0.012

# NATURAL GAS NEWS



## Prompt WTI (CL) Crude

### Daily Sentiment

**NEUTRAL**



RESISTANCE

--- & ---

SUPPORT

--- & ---

### FOLLOW US ON TWITTER:



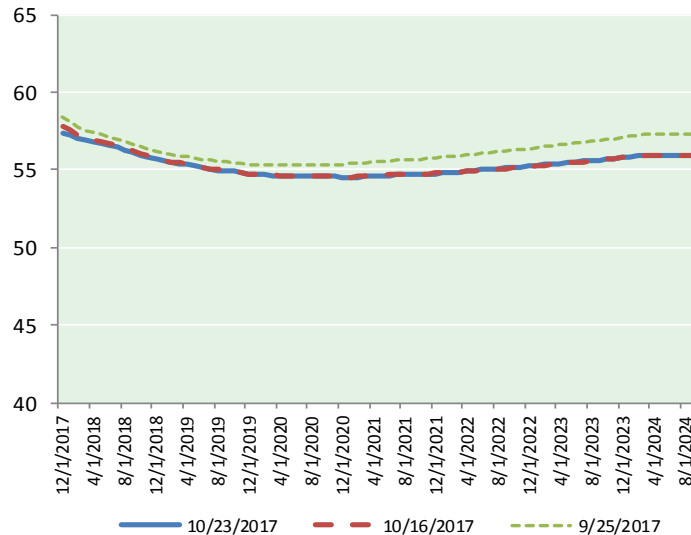
@MPG\_NatGasNews

## NYMEX Brent (BZ)

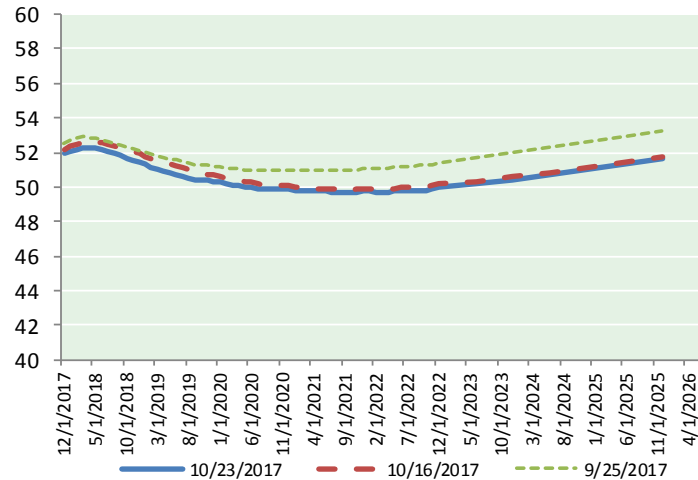
### Futures

Month	Close	Change
Dec-17	58.33	0.96
Jan-18	58.17	0.90
Feb-18	57.91	0.83
Mar-18	57.73	0.79
Apr-18	57.59	0.76
May-18	57.47	0.75
Jun-18	57.32	0.75
Jul-18	57.17	0.74
Aug-18	57.01	0.73
Sep-18	56.84	0.72
Oct-18	56.68	0.71
Nov-18	56.52	0.70
Dec-18	56.37	0.68
Jan-19	56.22	0.67
Feb-19	56.12	0.66
Mar-19	56.04	0.66
Apr-19	55.98	0.65
May-19	55.88	0.64
Jun-19	55.74	0.63
Jul-19	55.68	0.62
Aug-19	55.58	0.61
Sep-19	55.51	0.60
Oct-19	55.49	0.60
Nov-19	55.40	0.59
1YR Strip	57.40	0.78
2017	58.33	0.96
5YR Strip	55.78	0.61

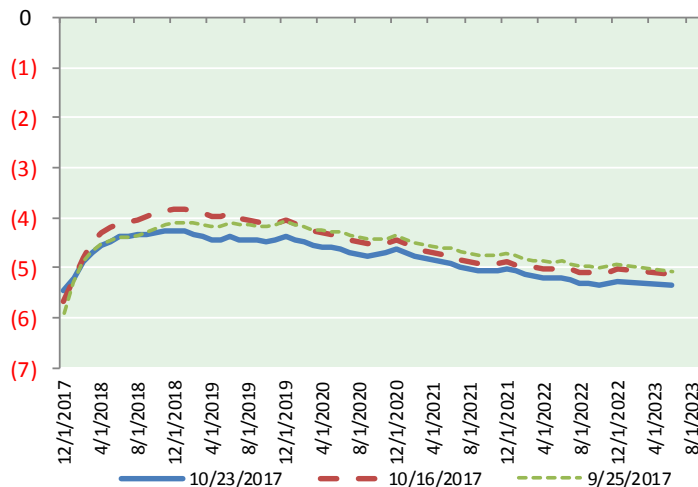
## BRENT CRUDE FORWARD CURVE



## WTI CRUDE FORWARD CURVE



## WTI-BRENT SPREAD



## FRAC Spread

### Specifications

Ethane : 42%	66,500 btu/g
Propane: 28%	90,830 btu/g
Butane: 11%	102,916 btu/g
Iso-Butane: 6%	98,935 btu/g
Natural Gasoline: 13%	115,021 btu/g

## Prompt NGL Futures

(\$/gallon)

Nov-17	Close	Change
Butane	1.053	0.002
Iso-Butane	1.048	0.001
Nat Gasoline	1.220	0.001

## NYMEX WTI (CL) Futures

Month	Close	Change
Dec-17	52.47	0.57
Jan-18	52.67	0.59
Feb-18	52.79	0.60
Mar-18	52.87	0.61
Apr-18	52.90	0.62
May-18	52.87	0.62
Jun-18	52.80	0.62
Jul-18	52.68	0.62
Aug-18	52.54	0.61
Sep-18	52.39	0.59
Oct-18	52.25	0.58
Nov-18	52.11	0.57
Dec-18	51.99	0.56
Jan-19	51.83	0.55
Feb-19	51.68	0.54
Mar-19	51.53	0.52
Apr-19	51.40	0.50
May-19	51.28	0.49
Jun-19	51.19	0.47
Jul-19	51.06	0.45
Aug-19	50.96	0.44
Sep-19	50.88	0.43
Oct-19	50.83	0.42
Nov-19	50.78	0.41
1YR Strip	52.61	0.60
2017	52.47	0.57
5YR Strip	50.86	0.41