

NATURAL GAS



OCTOBER 19, 2018

Prior Day's NYMEX Nov-18 Contract (CT)



NYMEX NG Futures

Month	Close	Change
Nov-18	3.198	(0.122)
Dec-18	3.250	(0.119)
Jan-19	3.325	(0.114)
Feb-19	3.247	(0.100)
Mar-19	3.074	(0.078)
Apr-19	2.732	(0.031)
May-19	2.691	(0.021)
Jun-19	2.716	(0.020)
Jul-19	2.751	(0.020)
Aug-19	2.752	(0.020)
Sep-19	2.733	(0.020)
Oct-19	2.753	(0.018)
Nov-19	2.804	(0.019)
Dec-19	2.943	(0.020)
Jan-20	3.036	(0.018)
Feb-20	2.966	(0.017)
Mar-20	2.822	(0.011)
Apr-20	2.564	0.003
May-20	2.529	0.004
Jun-20	2.557	0.004
Jul-20	2.587	0.004
Aug-20	2.590	0.004
Sep-20	2.575	0.004
Oct-20	2.592	0.001
1YR Strip	2.935	(0.057)
2018	3.224	(0.121)
5YR Strip	2.695	(0.012)

IN THE NEWS

Liquefied Natural Gas Plant in Providence Gets Federal OK— US News reported: Federal regulators have approved construction of a \$180 million liquefied natural gas facility on the Providence waterfront. The Providence Journal reports the Federal Energy Regulatory Commission issued the decision late Wednesday. Labor unions and business groups supported the project. Environ-

- **Liquefied Natural Gas Plant in Providence Gets Federal OK**
- **All Evacuation Orders Lifted in Bay Point and Pittsburg Following Fire Threat to Chevron Pipeline**

mental advocates, local residents and elected officials including Democratic Mayor Jorge Elorza opposed it. The commission says approving the project wouldn't significantly affect "the quality of the human environment." For more on this story visit usnews.com or click <https://bit.ly/2PJ7Hcz>

All Evacuation Orders Lifted in Bay Point and Pittsburg Following Fire Threat to Chevron Pipeline— KQED reports: All evacuation orders due to a fire that threatened a natural gas pipeline in eastern Contra Costa County have been lifted as of 2:30 p.m., Contra Costa County Deputy Fire Chief Lewis Broschard said during an afternoon press conference. The California Public Utilities Commission has launched a staff investigation into a fire in an underground utility vault that houses part of a natural gas pipeline run by Chevron. The fire prompted evacuation orders for some 4,000 residents in Bay Point and Pittsburg and led to a response by about a dozen public agencies. The incident started with a small grass fire near Suisun and Poinsettia avenues Wednesday evening that may have been caused by a downed electrical power line owned by Pacific Gas and Electric Co. Crews who dealt with that vegetation blaze later learned that a fire in a nearby underground utility vault, owned by Chevron, had ignited. A 12-inch, high-pressure natural gas pipeline runs through the facility. That pipe's pressure was reduced from 480 psi to 25 psi in a "controlled and safe manner," Terence Carey, a county fire assistant chief, said during the afternoon press conference. For more on this story visit KQED.com or click <https://bit.ly/2ykqjIT>

12 MONTH CANDLESTICK (WEEKLY)



Prompt Natural Gas (NG) Daily Sentiment

BULLISH



RESISTANCE

3.28 & 3.37

SUPPORT

3.15 & 3.11

Trading Summary

NATURAL GAS

Futures	Close	Change
NG	3.198	(0.122)
Volume	503,952	(292,311)
Open Int.	1,624,333	(15,395)

CRUDE AND GASOLINE

Futures	Close	Change
Crude	68.65	(1.10)
RBOB	1.8911	(0.0276)
Crude/NG	21.47	0.46

METALS

Futures	Close	Change
Gold	1,226.50	

EQUITIES

Exchange	Close	Change
DOW	25,552.41	172.96
S&P 500	-1,619.65	22.00

CURRENCY

Currency	Close	Change
EUR/USD	1.1482	0.0029
USD/CND	1.2405	0.0023

Contact Us



Mansfield Energy Corp
1025 Airport Pkwy
Gainesville, GA 30501
www.mansfield.energy
info@mansfieldoil.com

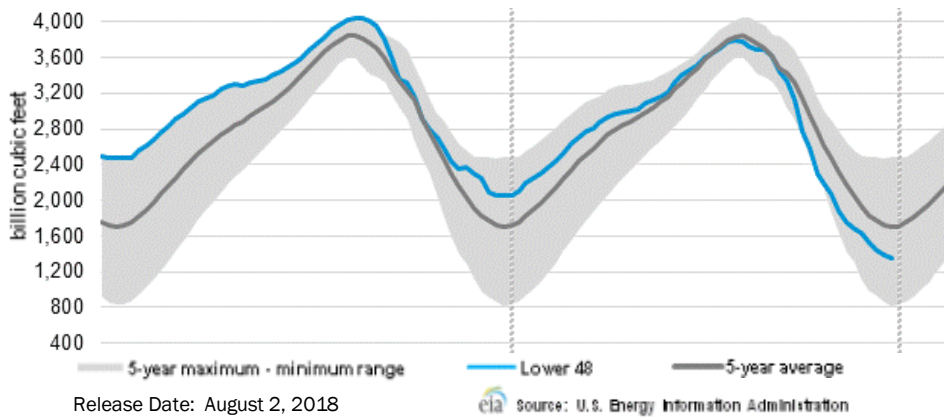
Phone: (800) 695-6626





NATURAL GAS NEWS

WEEKLY GAS IN UNDERGROUND STORAGE WITH 5-YR RANGE



Rig Count

Report Date: **October 12, 2018**

	Total	Change
US -	1,063	+11
CN -	195	13

EIA Weekly NG Storage Actual and Surveys for October 19, 2018

Released October 18, 2018
 Range — +25 to +99
 PIRA— +83
 CITI — +76
 Raymond James — +84

EIA ACTUAL — +81

Total Working Gas In Storage

3,037 BCF

+81 BCF (LAST WEEK)
 (601) BCF (LAST YEAR)
 (605) BCF (5-YR AVG)

U.S. Natural Gas Supply Gas Week 10/11 — 10/17

Average daily values (BCF/D):
Last Year (BCF/d)
 Dry Production — +82.3
 Total Supply — +80.1
Last Week (BCF/d)
 Dry Production — +85.6
 Total Supply — +90.8

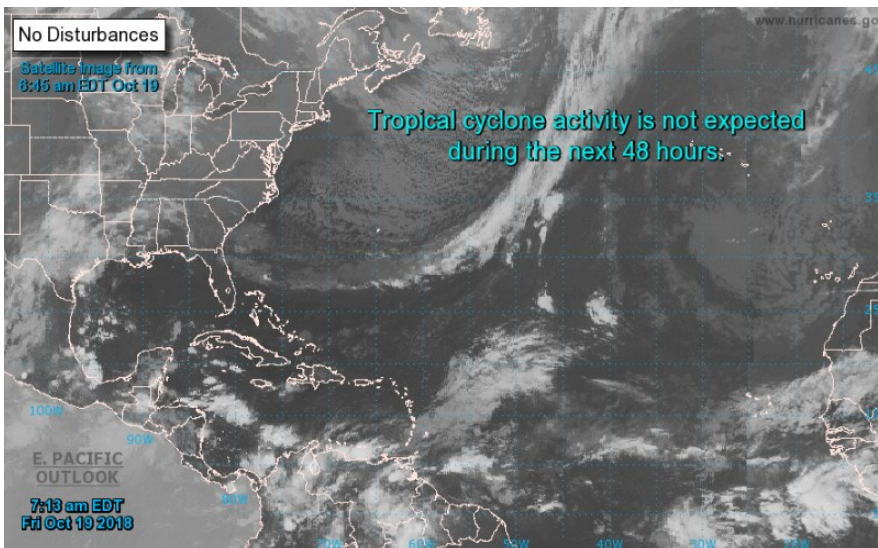
[NEXT REPORT ON Oct 26]

U.S. Natural Gas Demand Gas Week 10/11 — 10/17

Average daily values (BCF/D):
Last Year (BCF/d)
 Power — +26.8
 Total Demand — +74.6
Last Week (BCF/d)
 Power — +31.0
 Total Demand — +78.3

[NEXT REPORT ON Oct 26]

TROPICAL STORM ACTIVITY— ATLANTIC



Tropical Weather Outlook

NWS National Hurricane Center
 Miami FL

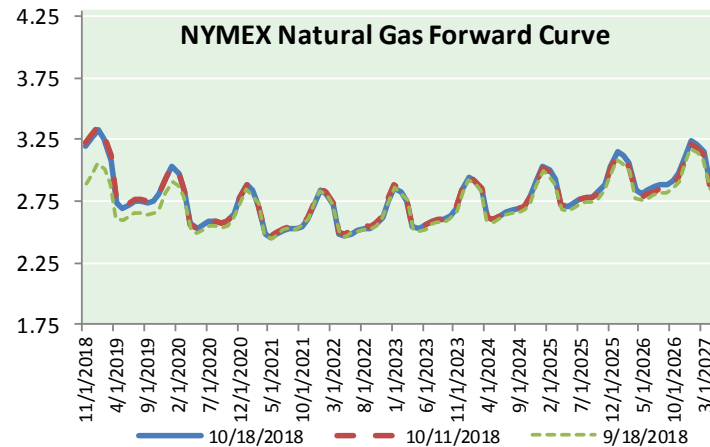
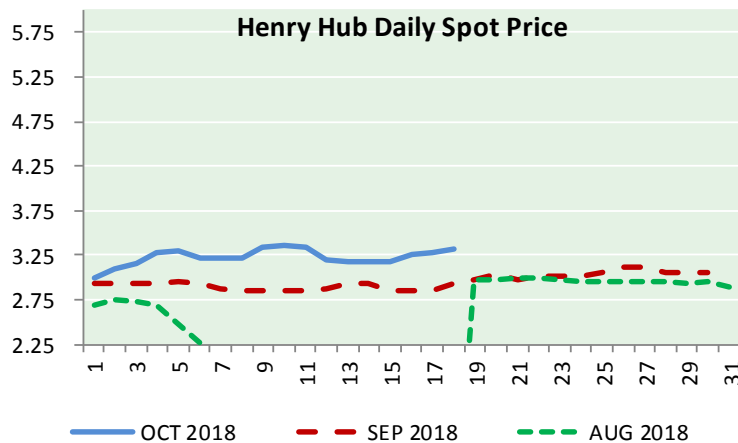
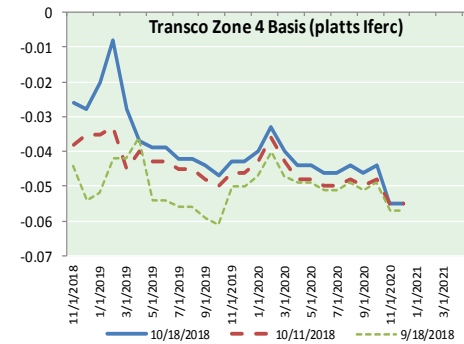
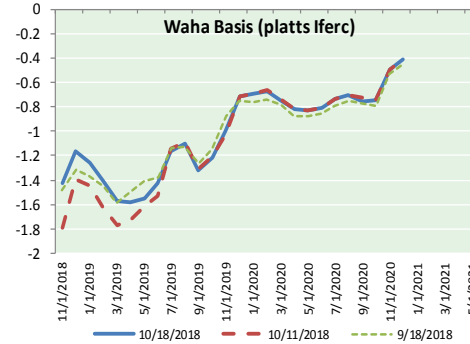
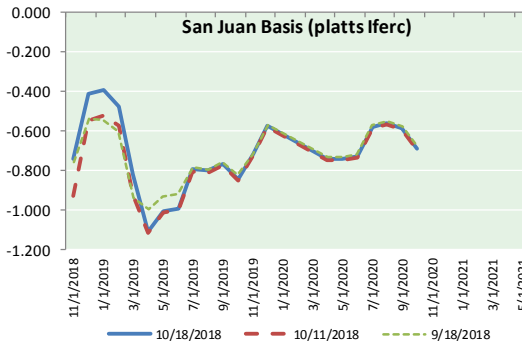
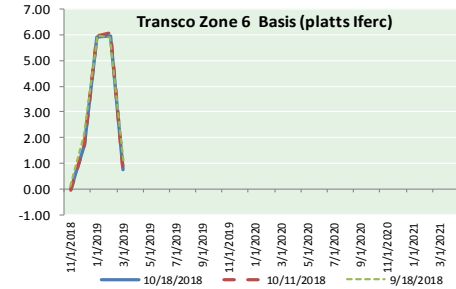
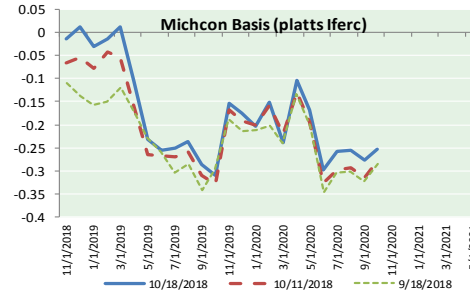
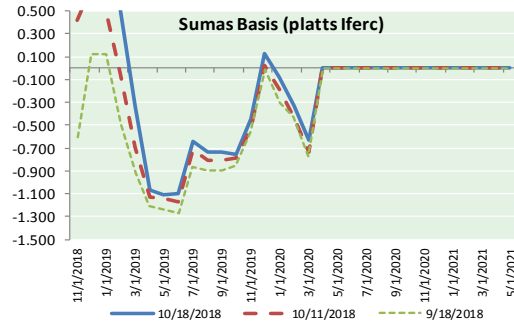
800 AM EDT Fri Oct 19 2018

For the North Atlantic...Caribbean Sea and the Gulf of Mexico:

Tropical cyclone formation is not expected during the next 5 days.



NATURAL GAS BASIS FUTURES, HENRY HUB SPOT PRICES, AND FORWARD CURVE



NYMEX WTI Delivery

Month Average (\$/bbl)

(Excluding Weekends and Holidays)

Month: October 2018

Day	Price	Day	Price
1	75.30	16	71.92
2	75.23	17	69.75
3	76.41	18	68.65
4	74.33	19	
5	74.34	20	
6		21	
7		22	
8	74.29	23	
9	74.96	24	
10	73.17	25	
11	70.97	26	
12	71.34	27	
13		28	
14		29	
15	71.78	30	
		31	

Average (Oct) 73.0314
(through 10/18/2018)

Average (Sep) 70.0847

Average (Aug) 67.8452

CME NG Option Prices

ATM Call

Month	Strike	Close	Imp Vol
Dec-18			
Jan-19	3.300	0.186	45.0
Feb-19			
Mar-19			
Apr-19			

CME NG Option Prices

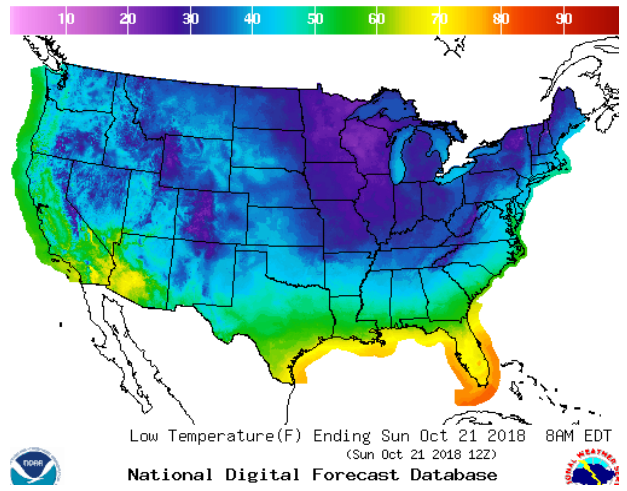
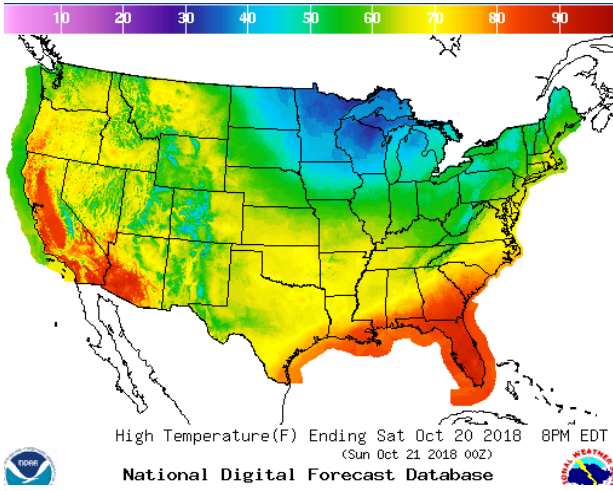
ATM Put

Month	Strike	Close	Imp Vol
Dec-18			
Jan-19	3.300	0.203	45.0
Feb-19			
Mar-19			
Apr-19			

WEATHER – HIGH / LOW TEMPERATURE SATURDAY

HIGH Temperature

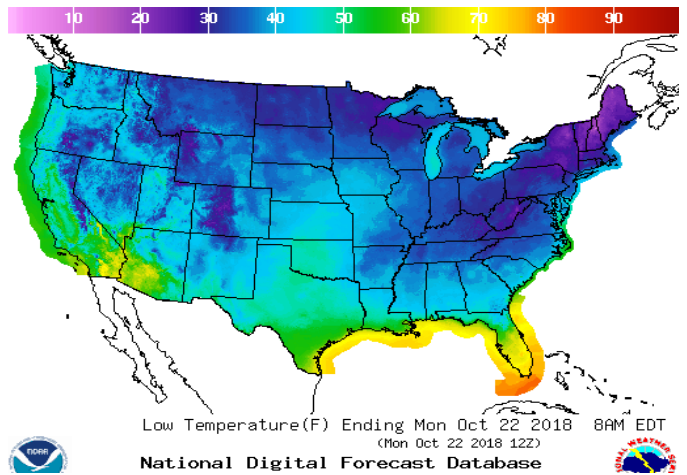
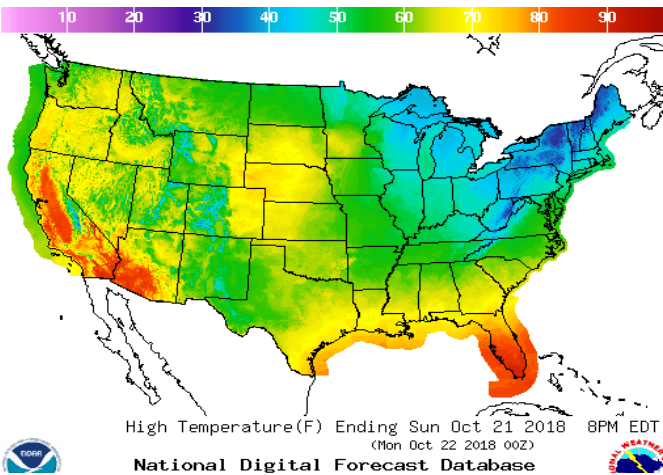
LOW Temperature



WEATHER – HIGH / LOW TEMPERATURE SUNDAY

Temperature

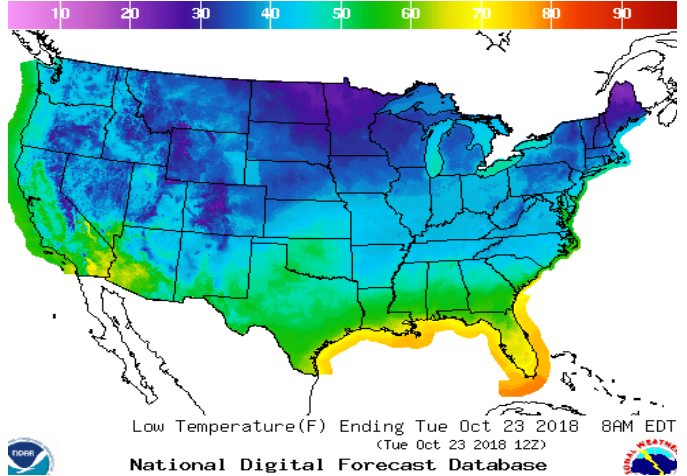
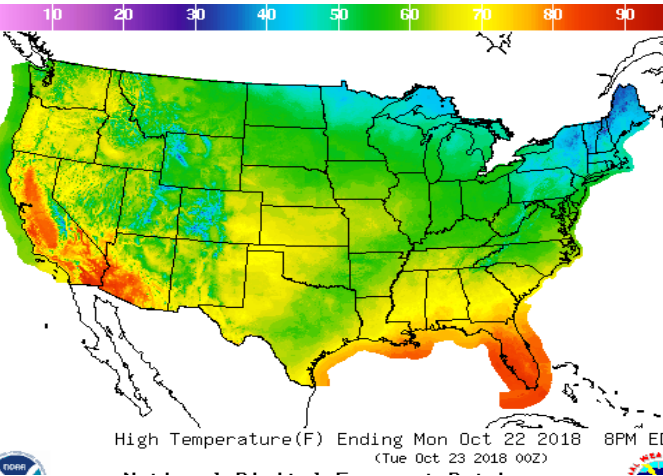
Precipitation



WEATHER – HIGH / LOW TEMPERATURE MONDAY

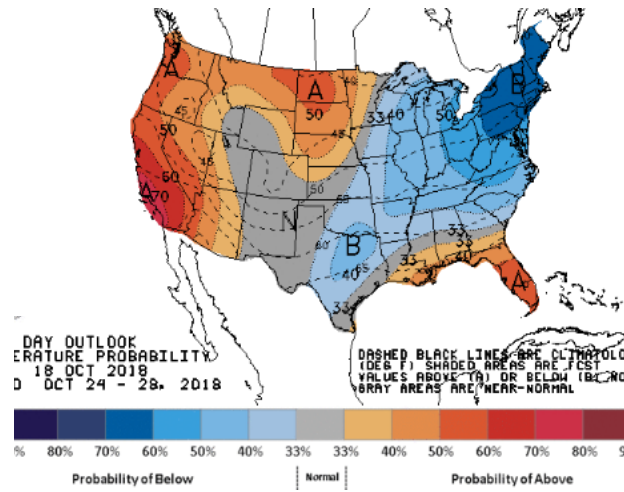
Temperature

Precipitation

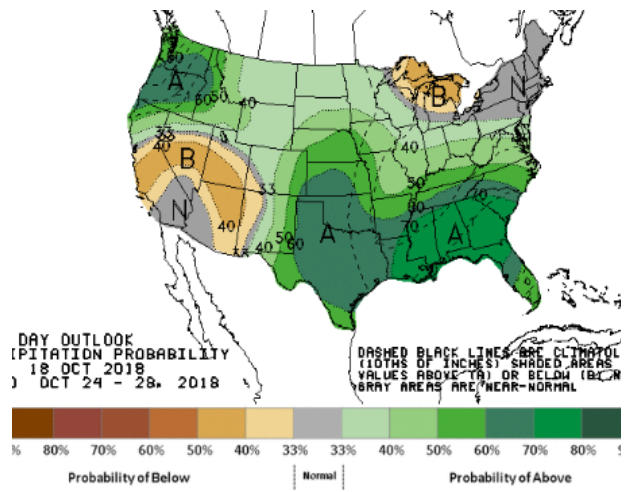


WEATHER — 6 TO 10 DAY OUTLOOK — NOAA

HIGH Temperature

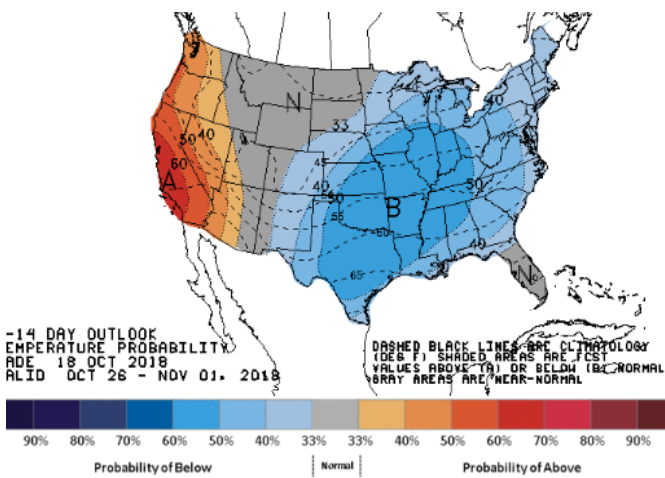


LOW Temperature

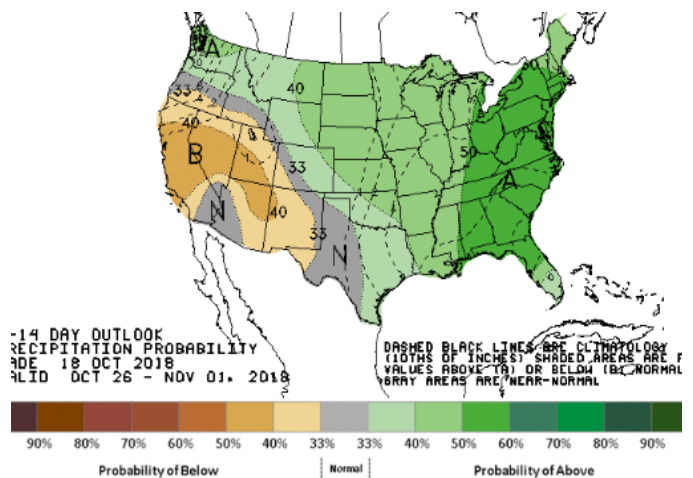


WEATHER — 8 TO 14 DAY OUTLOOK — NOAA

Temperature

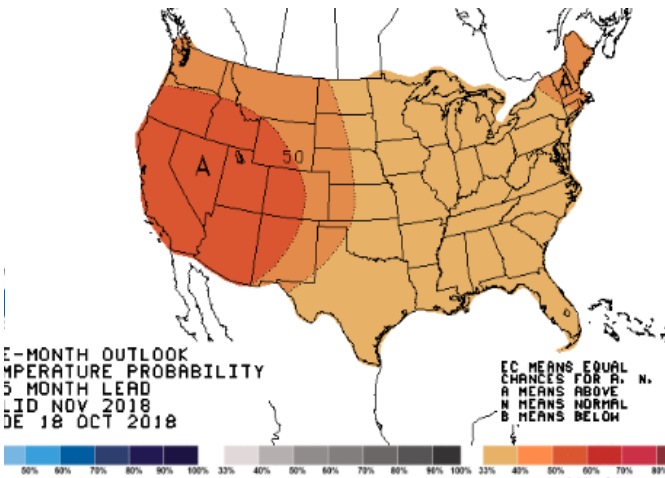


Precipitation

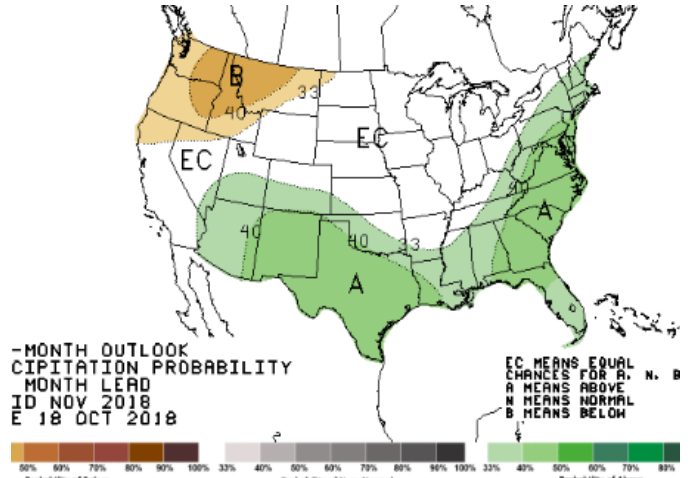


WEATHER — 30 DAY OUTLOOK — NOAA

Temperature



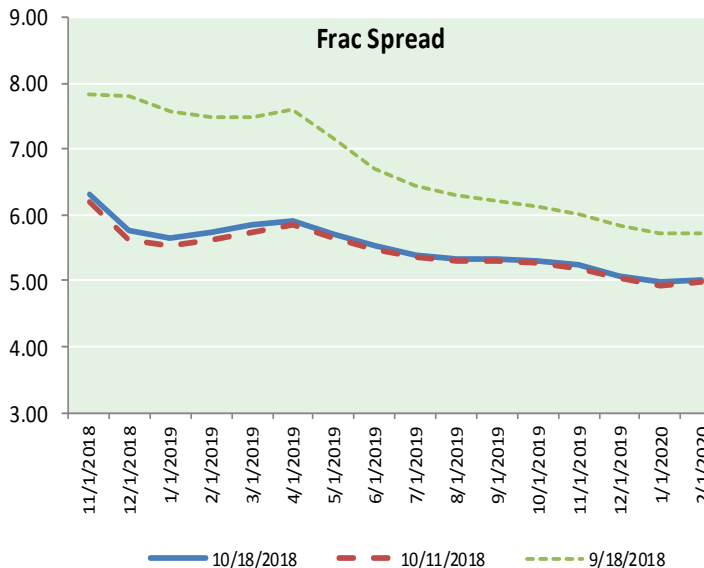
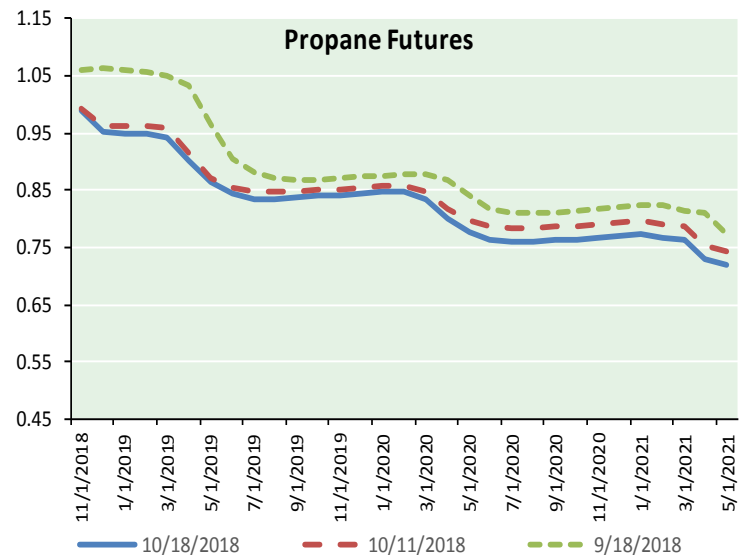
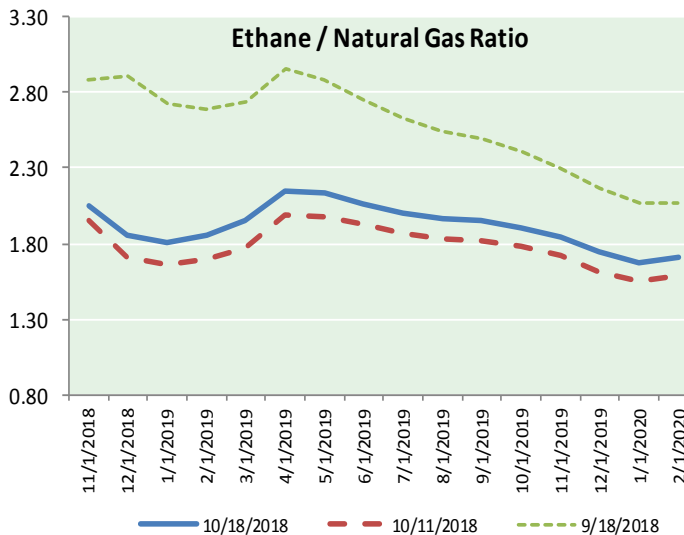
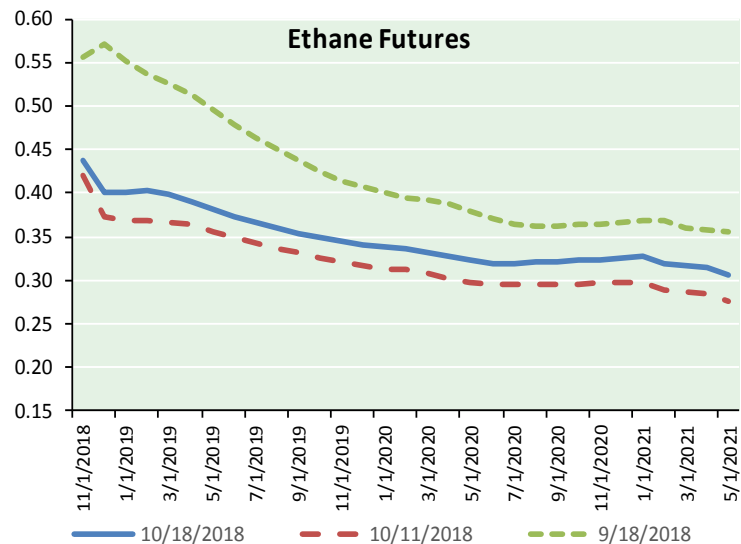
Precipitation



NATURAL GAS NEWS



ETHANE FUTURES, NG/ETHANE RATIO, PROPANE FUTURES, AND THE FRAC SPREAD



CME Future Prices

Month	Close	Change
Nov-18	0.437	0.008
Dec-18	0.401	0.015
Jan-19	0.401	0.013
Feb-19	0.402	0.011
Mar-19	0.399	0.013
Apr-19	0.391	0.011
May-19	0.381	0.010
Jun-19	0.373	0.009
Jul-19	0.366	0.008
Aug-19	0.359	0.008
Sep-19	0.354	0.007
Oct-19	0.349	0.007
1YR Strip	0.384	0.010

CME Future Prices

Month	Close	Change
Nov-18	0.991	(0.015)
Dec-18	0.951	(0.034)
Jan-19	0.950	(0.034)
Feb-19	0.948	(0.034)
Mar-19	0.944	(0.033)
Apr-19	0.902	(0.031)
May-19	0.864	(0.029)
Jun-19	0.844	(0.029)
Jul-19	0.836	(0.028)
Aug-19	0.835	(0.028)
Sep-19	0.836	(0.028)
Oct-19	0.839	(0.028)
1YR Strip	0.895	(0.029)

NATURAL GAS NEWS



Prompt WTI (CL) Crude

Daily Sentiment

BULLISH



RESISTANCE

69.63 & 70.61

SUPPORT

68.07 & 67.49

FOLLOW US ON TWITTER:



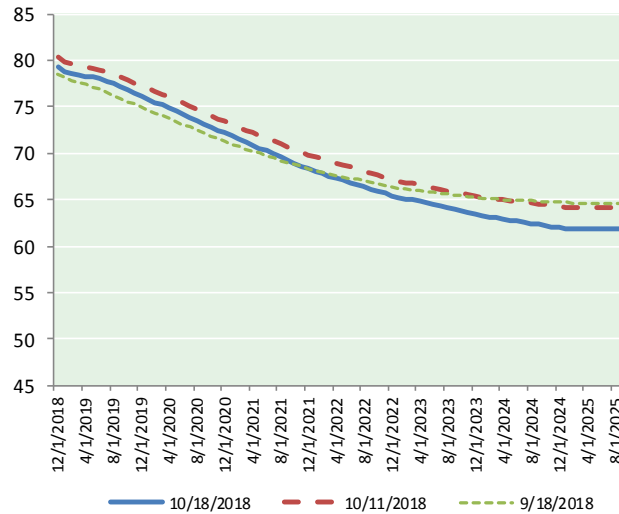
@MPG_NatGasNews

NYMEX Brent (BZ)

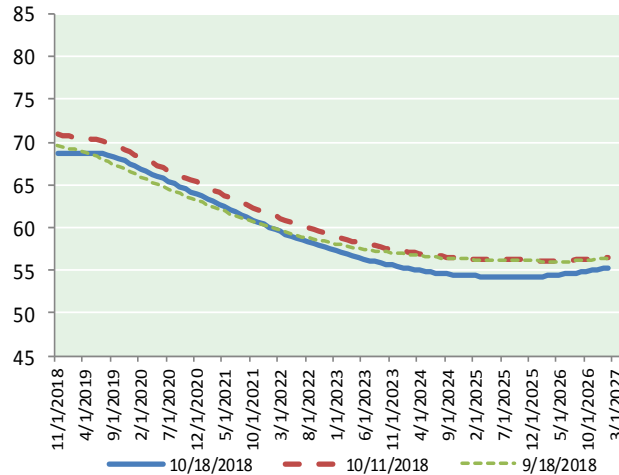
Futures

Month	Close	Change
Nov-18	68.65	(1.10)
Dec-18	68.71	(0.99)
Jan-19	68.75	(0.97)
Feb-19	68.76	(0.97)
Mar-19	68.78	(0.96)
Apr-19	68.79	(0.96)
May-19	68.78	(0.95)
Jun-19	68.74	(0.93)
Jul-19	68.64	(0.91)
Aug-19	68.48	(0.89)
Sep-19	68.27	(0.88)
Oct-19	68.03	(0.87)
Nov-19	67.78	(0.86)
Dec-19	67.50	(0.86)
Jan-20	67.17	(0.84)
Feb-20	66.84	(0.82)
Mar-20	66.53	(0.79)
Apr-20	66.24	(0.76)
May-20	65.97	(0.74)
Jun-20	65.71	(0.72)
Jul-20	65.40	(0.69)
Aug-20	65.08	(0.66)
Sep-20	64.78	(0.64)
Oct-20	64.51	(0.61)
1YR Strip 2018	68.62	(0.95)
2018	68.68	(1.05)
5YR Strip	62.52	(0.52)

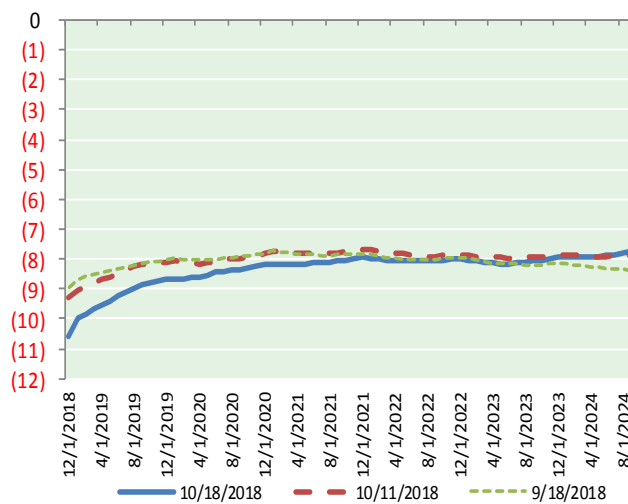
BRENT CRUDE FORWARD CURVE



WTI CRUDE FORWARD CURVE



WTI-BRENT SPREAD



FRAC Spread

Specifications

Ethane	: 42%	66,500 btu/g
Propane	: 28%	90,830 btu/g
Butane	: 11%	102,916 btu/g
Iso-Butane	: 6%	98,935 btu/g
Natural Gasoline	: 13%	115,021 btu/g

Prompt NGL Futures

	Nov-18	Close	Change
Butane	1.154	(0.014)	
Iso-Butane	1.158	(0.015)	
Nat Gasoline	1.561	(0.011)	

NYMEX WTI (CL) Futures

Month	Close	Change
Dec-18	79.29	(0.76)
Jan-19	78.75	(0.88)
Feb-19	78.59	(0.89)
Mar-19	78.46	(0.90)
Apr-19	78.31	(0.92)
May-19	78.17	(0.94)
Jun-19	77.98	(0.95)
Jul-19	77.73	(0.97)
Aug-19	77.45	(0.99)
Sep-19	77.14	(1.01)
Oct-19	76.82	(1.02)
Nov-19	76.51	(1.02)
Dec-19	76.16	(1.01)
Jan-20	75.83	(1.00)
Feb-20	75.49	(0.99)
Mar-20	75.16	(0.98)
Apr-20	74.82	(0.96)
May-20	74.49	(0.95)
Jun-20	74.16	(0.93)
Jul-20	73.81	(0.92)
Aug-20	73.47	(0.90)
Sep-20	73.13	(0.88)
Oct-20	72.80	(0.84)
Nov-20	72.50	(0.82)
1YR Strip 2018	77.93	(0.94)
2018	79.29	(0.76)
5YR Strip	70.69	(0.75)