

NATURAL GAS



OCTOBER 15, 2018

Prior Day's NYMEX NOV-18 Contract (CT)



NYMEX NG Futures

Month	Close	Change
Nov-18	3.161	(0.061)
Dec-18	3.226	(0.053)
Jan-19	3.306	(0.046)
Feb-19	3.238	(0.039)
Mar-19	3.088	(0.025)
Apr-19	2.746	(0.009)
May-19	2.700	(0.005)
Jun-19	2.726	(0.003)
Jul-19	2.759	(0.002)
Aug-19	2.761	(0.002)
Sep-19	2.742	(0.002)
Oct-19	2.761	0.000
Nov-19	2.815	0.003
Dec-19	2.950	0.004
Jan-20	3.042	0.007
Feb-20	2.972	0.008
Mar-20	2.830	0.007
Apr-20	2.564	0.002
May-20	2.529	0.002
Jun-20	2.557	0.002
Jul-20	2.587	0.002
Aug-20	2.591	0.002
Sep-20	2.576	0.002
Oct-20	2.594	0.002
1YR Strip	2.935	(0.021)
2018	3.194	(0.057)
5YR Strip	2.705	(0.003)

IN THE NEWS

Nine injured in natural gas line explosion at Chesapeake home—WTKR reported: CHESAPEAKE, Va. - A house burst into flames in the 2500 block of Lofurno Road Sunday evening. Crews were dispatched at 5:44 p.m. after several calls reporting that a house had exploded. Units arrived three minutes later to find the single-family home suffering from "devastating" damage and on fire. A

- Nine injured in natural gas line explosion at Chesapeake home
- U.S. Gulf of Mexico oil and gas output increasing after hurricane

tree and neighboring house were also on fire. The Incident Commander immediately called for a second alarm to bring additional resources to the scene. A natural gas line caused the explosion, according to the Chesapeake Fire Department. Viewers tell News 3 the "massive explosion" could be felt from blocks away. News 3's Aleah Hordges spoke with a neighbor next door who helped rescue two homeowners who were inside after the explosion. He said it happened right before his eyes. For more on this story visit [wtkr.com](https://bit.ly/2Ab0QU1) or click <https://bit.ly/2Ab0QU1>

U.S. Gulf of Mexico oil and gas output increasing after hurricane—Reuters reported: U.S. Gulf of Mexico oil and gas production is returning to near normal levels following Hurricane Michael, data from an offshore regulator showed on Sunday, with oil output off 15.8 percent and natural gas production down less than 10 percent. The Bureau of Safety and Environmental Enforcement (BSEE) also said in a midday update on Sunday that all oil and gas operators have returned to their production platforms. It can take several days after a storm passes to inspect platforms for damages, fully return crews and restore production after wells are shut-in ahead of a storm. Michael entered the Gulf as a tropical storm and quickly spun into a major hurricane, producing rough seas and winds of up to 155 miles per hour (250 kph) when it made landfall as a Category 4 storm near Panama City, Florida, on Wednesday. The Gulf production still offline on Saturday morning represented 268,824 barrels per day of oil production and 227 million cubic feet per day of natural gas output, BSEE reported from a survey of 17 oil and gas producers. For more on this story visit [reuters.org](https://bit.ly/2zPh1YN) or click <https://bit.ly/2zPh1YN>

12 MONTH CANDLESTICK (WEEKLY)



Prompt Natural Gas (NG) Daily Sentiment

BULLISH



RESISTANCE
3.24 & 3.32
SUPPORT
3.11 & 3.06

Trading Summary

NATURAL GAS

Futures	Close	Change
NG	3.161	(0.061)
Volume	560,715	(433,370)
Open Int.	1,626,588	(27,865)

CRUDE AND GASOLINE

Futures	Close	Change
Crude	71.34	0.37
RBOB	1.9420	0.0093
Crude/NG	22.57	0.54

METALS

Futures	Close	Change
Gold	1,218.10	14.20

EQUITIES

Exchange	Close	Change
DOW	25,293.78	(46.21)
S&P 500	-1,361.02	(8.25)

CURRENCY

Currency	Close	Change
EUR/USD	1.1588	0.0028
USD/CND	1.2405	(0.0013)

Contact Us



Mansfield Energy Corp
1025 Airport Pkwy
Gainesville, GA 30501

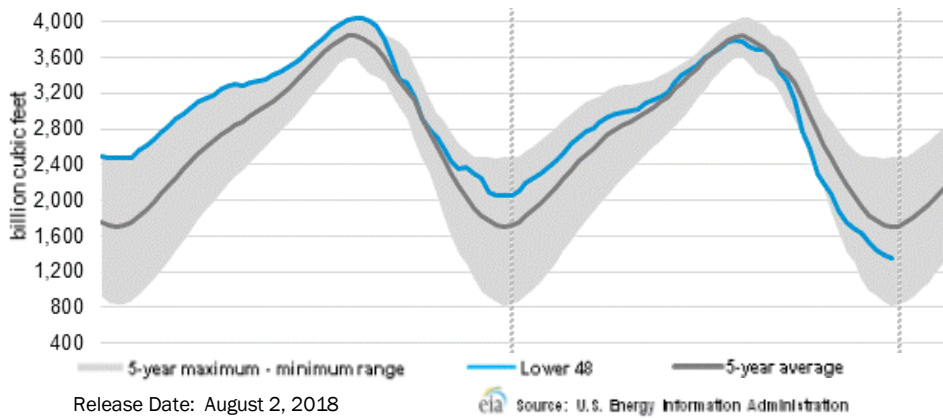
www.mansfield.energy

info@mansfieldoil.com

Phone: (800) 695-6626



WEEKLY GAS IN UNDERGROUND STORAGE WITH 5-YR RANGE



Rig Count

Report Date: October 12, 2018

	Total	Change
US -	1,063	+11
CN -	195	13

EIA Weekly NG Storage Actual and Surveys for October 12, 2018

Released October 11, 2018
 Range — +71 to +90
 PIRA— +89
 CITI — +88
 Reuters — +87

EIA ACTUAL — +46

Total Working Gas In Storage

2956 BCF

+90 BCF (LAST WEEK)
 (627) BCF (LAST YEAR)
 (607) BCF (5-YR AVG)

U.S. Natural Gas Supply Gas Week 10/4 — 10/10

Average daily values (BCF/D):
 Last Year (BCF/d)
 Dry Production — +74.6
 Total Supply — +80.3
 Last Week (BCF/d)
 Dry Production — +85.7
 Total Supply — +90.8

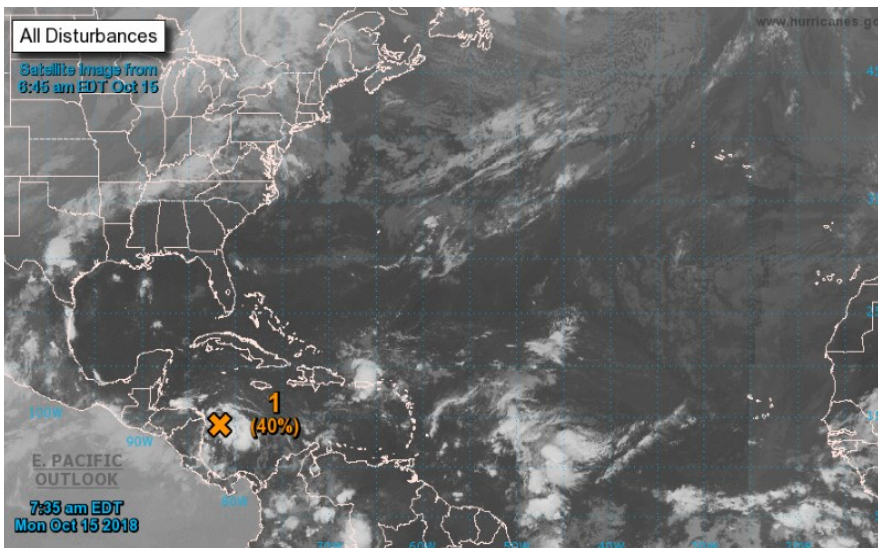
[NEXT REPORT ON Oct 22]

U.S. Natural Gas Demand Gas Week 10/4 — 10/10

Average daily values (BCF/D):
 Last Year (BCF/d)
 Power — +28.6
 Total Demand — +72.7
 Last Week (BCF/d)
 Power — +29.6
 Total Demand — +77.5

[NEXT REPORT ON Oct 22]

TROPICAL STORM ACTIVITY— ATLANTIC



Tropical Weather Outlook

NWS National Hurricane Center Miami FL

800 AM EDT Mon Oct 15 2018

For the North Atlantic...Caribbean Sea and the Gulf of Mexico:

1. Showers and thunderstorms associated with a broad area of low

pressure located over the southwestern Caribbean Sea are showing

some signs of organization. The system is moving west-northwestward,

and it is possible that it could become a tropical depression before

it moves inland over Central America by Tuesday. Regardless of

development, locally heavy rainfall, which could cause flash

flooding, is possible across portions of Central America for much of

the week.

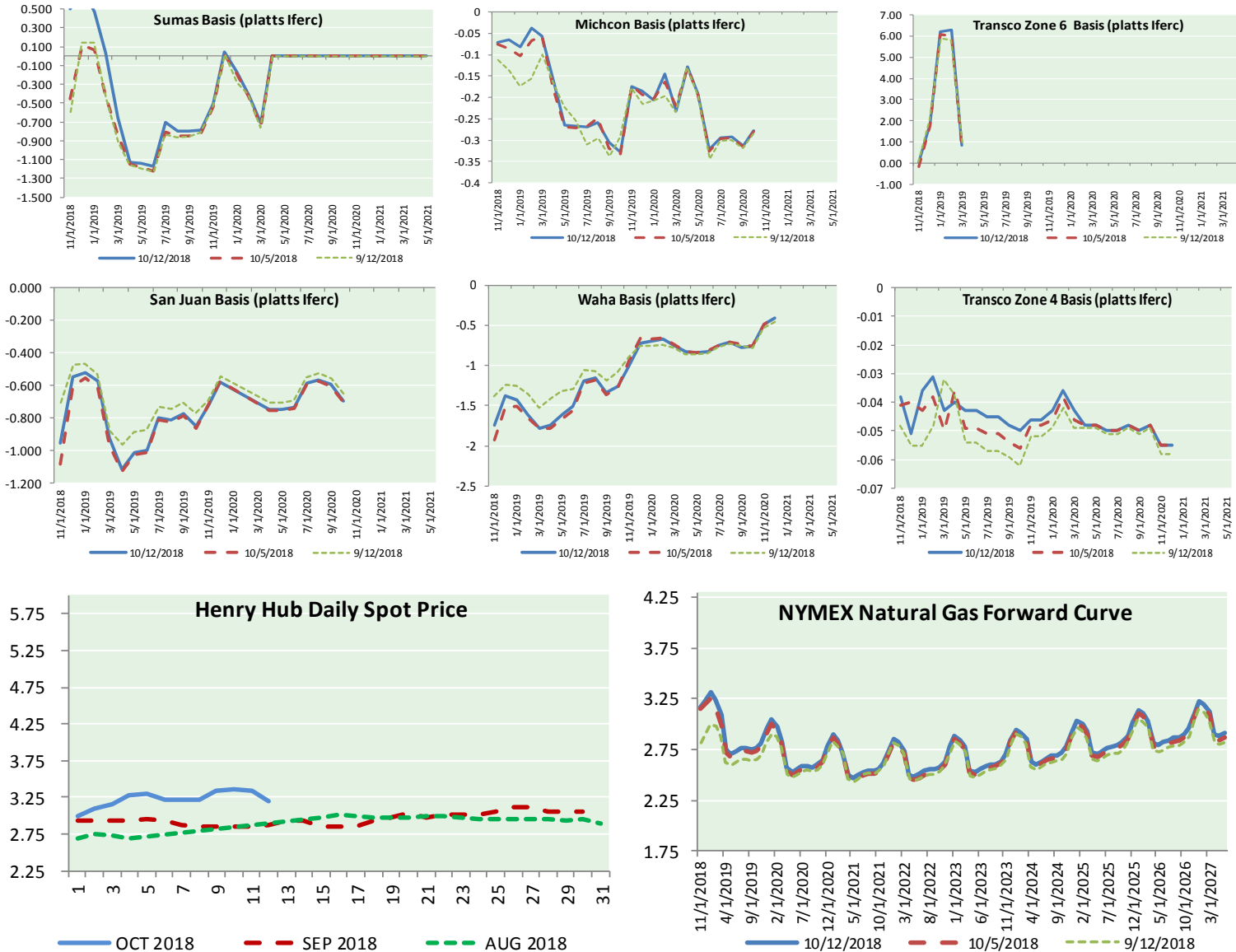
* Formation chance through 48 hours...medium...40 percent.

* Formation chance through 5 days...medium...40 percent.



NATURAL GAS NEWS

NATURAL GAS BASIS FUTURES, HENRY HUB SPOT PRICES, AND FORWARD CURVE



NYMEX WTI Delivery

Month Average (\$/bbl)

(Excluding Weekends and Holidays)

Month: October 2018

Day	Price	Day	Price
1	75.30	16	
2	75.23	17	
3	76.41	18	
4	74.33	19	
5	74.34	20	
6		21	
7		22	
8	74.29	23	
9	74.96	24	
10	73.17	25	
11	70.97	26	
12	71.34	27	
13		28	
14		29	
15		30	
		31	

Average (Oct) 74.0340
(through 10/12/2018)

Average (Sep) 70.0847

Average (Aug) 67.8452

CME NG Option Prices

ATM Call

Month	Strike	Close	Imp Vol
Dec-18			
Jan-19	3.300	0.145	33.7
Feb-19			
Mar-19			
Apr-19			

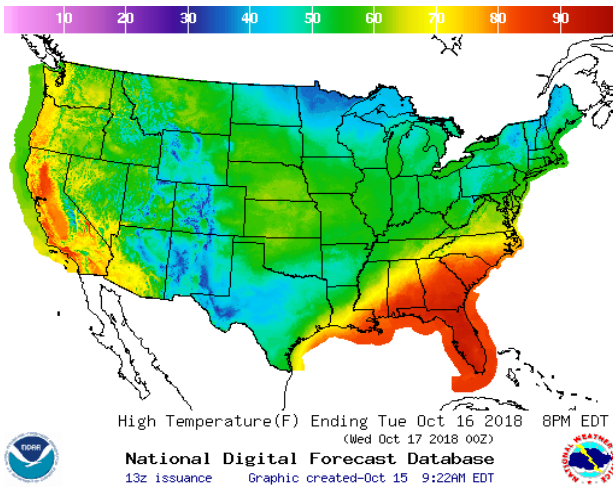
CME NG Option Prices

ATM Put

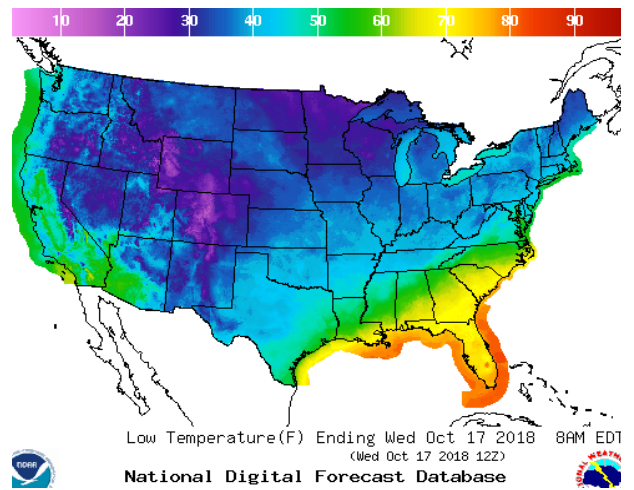
Month	Strike	Close	Imp Vol
Dec-18			
Jan-19	3.300	0.221	46.8
Feb-19			
Mar-19			
Apr-19			

WEATHER – HIGH / LOW TEMPERATURE TOMORROW

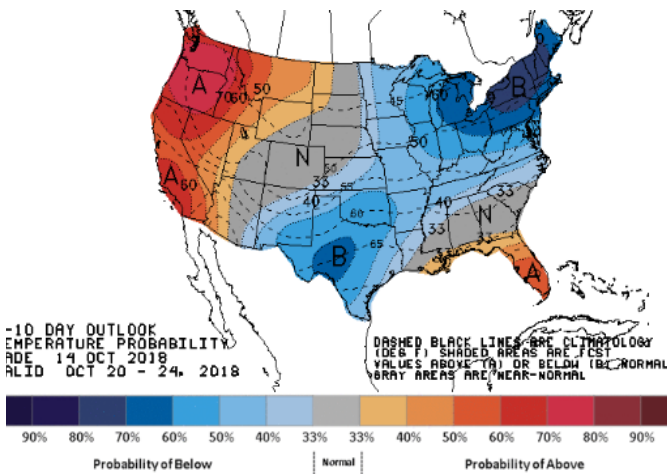
HIGH Temperature



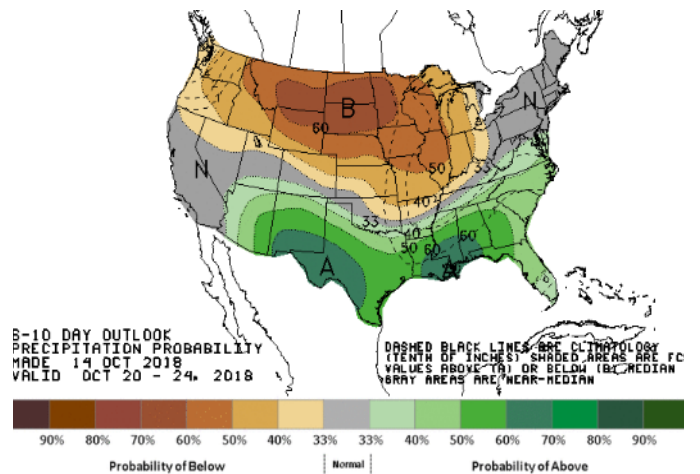
LOW Temperature



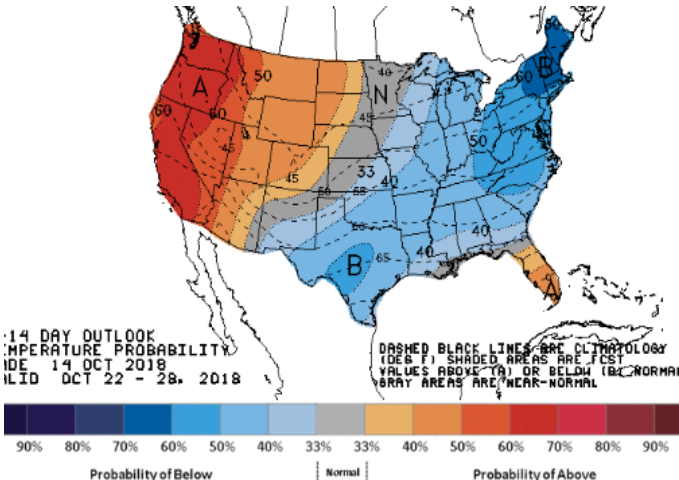
WEATHER – 6 TO 10 DAY OUTLOOK – NOAA
Temperature



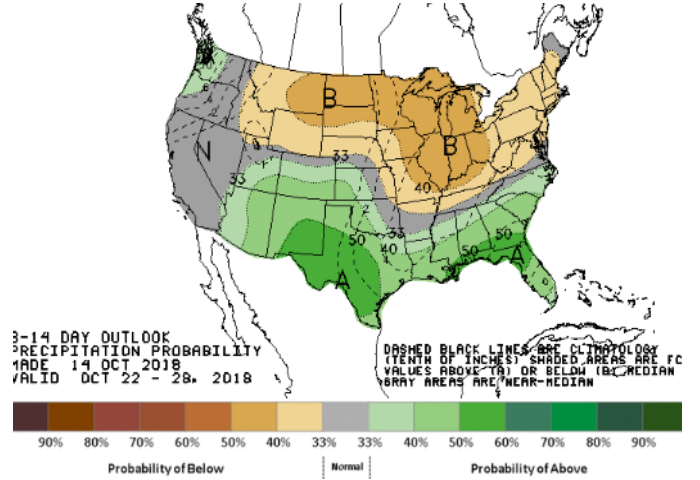
Precipitation



WEATHER – 8 TO 14 DAY OUTLOOK – NOAA
Temperature



Precipitation

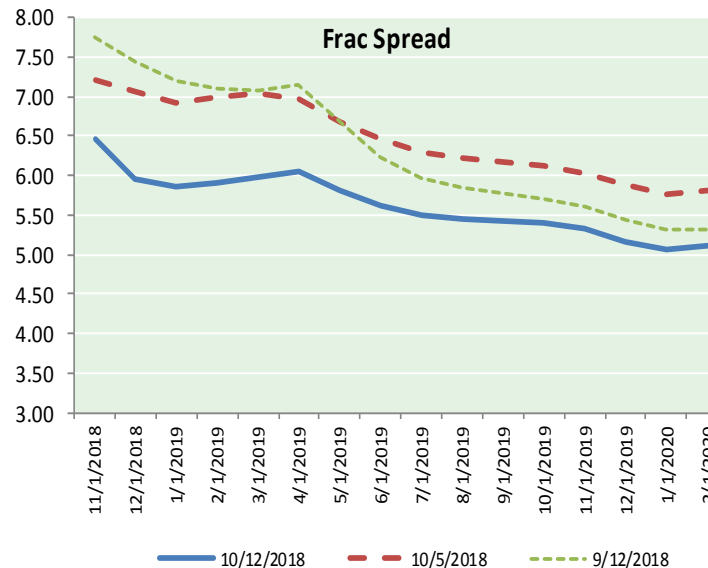
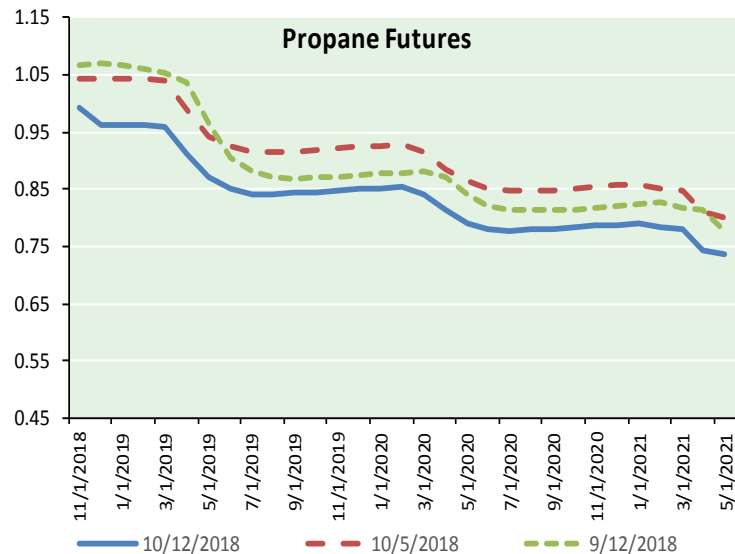
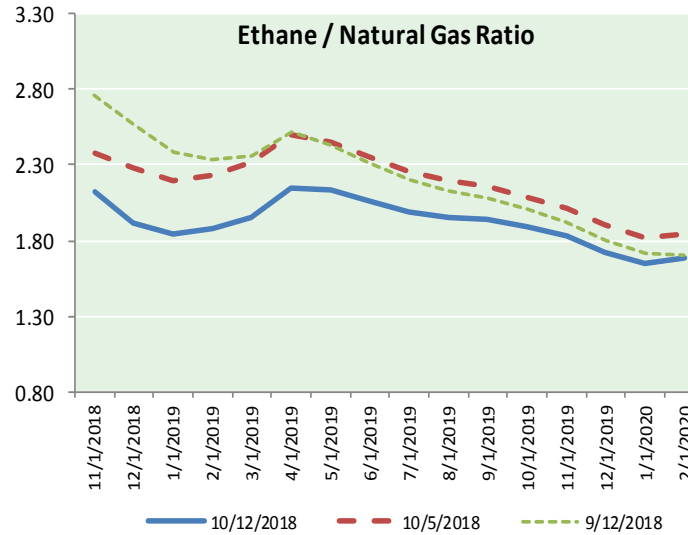
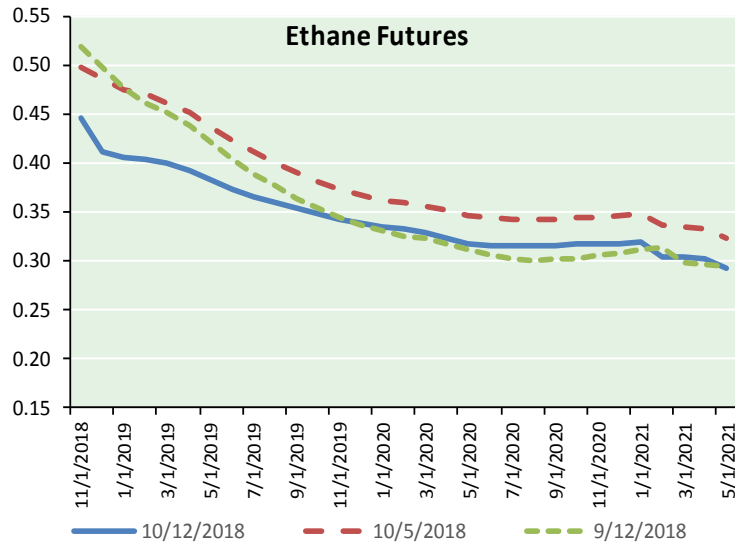


NATURAL GAS NEWS



ETHANE FUTURES, NG/ETHANE RATIO, PROPANE FUTURES, AND THE FRAC SPREAD

CME Future Prices



Month	Close	Change
Nov-18	0.445	0.026
Dec-18	0.411	0.038
Jan-19	0.406	0.036
Feb-19	0.404	0.035
Mar-19	0.400	0.033
Apr-19	0.392	0.028
May-19	0.383	0.026
Jun-19	0.374	0.024
Jul-19	0.366	0.023
Aug-19	0.359	0.022
Sep-19	0.353	0.022
Oct-19	0.348	0.021
1YR Strip	0.387	0.028

CME Future Prices Propane (C3) Non-LDH— Mont Belvieu

Month	Close	Change
Nov-18	0.994	0.001
Dec-18	0.963	0.001
Jan-19	0.963	0.000
Feb-19	0.963	(0.001)
Mar-19	0.958	(0.001)
Apr-19	0.913	(0.002)
May-19	0.870	(0.003)
Jun-19	0.851	(0.004)
Jul-19	0.842	(0.004)
Aug-19	0.842	(0.004)
Sep-19	0.843	(0.004)
Oct-19	0.846	(0.004)
1YR Strip	0.904	(0.002)

NATURAL GAS NEWS



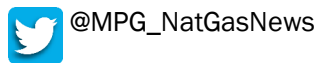
Prompt WTI (CL) Crude Daily Sentiment

BULLISH



RESISTANCE
72.02 & 72.70
SUPPORT
70.65 & 69.96

FOLLOW US ON TWITTER:

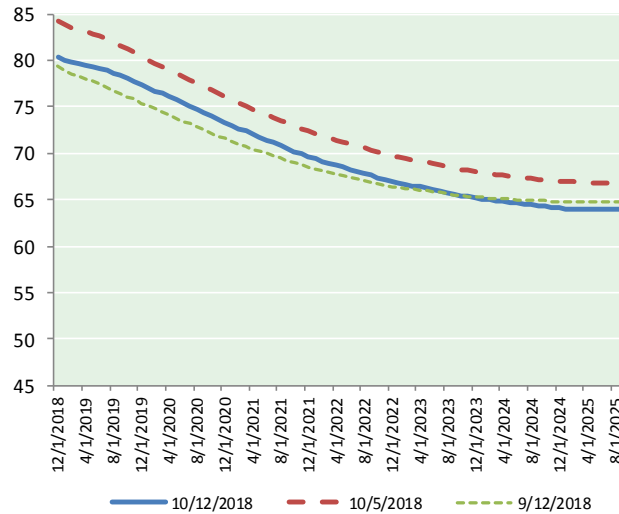


NYMEX Brent (BZ)

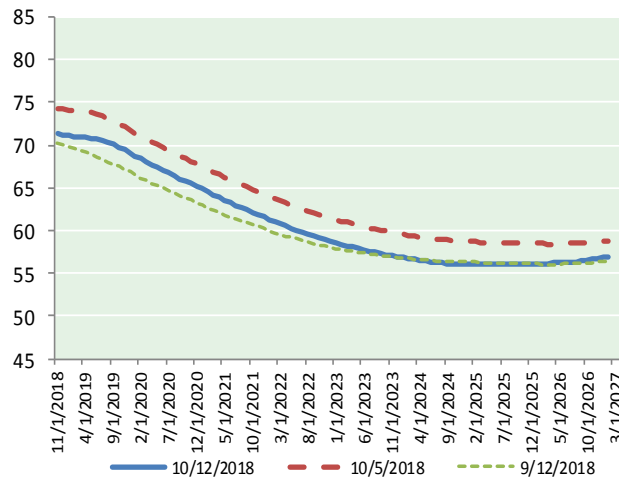
Futures

Month	Close	Change
Nov-18	71.34	0.37
Dec-18	71.18	0.37
Jan-19	71.08	0.39
Feb-19	70.99	0.39
Mar-19	70.94	0.39
Apr-19	70.89	0.39
May-19	70.82	0.38
Jun-19	70.70	0.36
Jul-19	70.54	0.35
Aug-19	70.31	0.33
Sep-19	70.04	0.30
Oct-19	69.75	0.28
Nov-19	69.45	0.26
Dec-19	69.15	0.23
Jan-20	68.77	0.20
Feb-20	68.40	0.18
Mar-20	68.05	0.16
Apr-20	67.72	0.14
May-20	67.40	0.11
Jun-20	67.10	0.07
Jul-20	66.75	0.05
Aug-20	66.41	0.03
Sep-20	66.08	(0.01)
Oct-20	65.79	(0.03)
1YR Strip 2018	70.72	0.36
2018	71.26	0.37
5YR Strip	64.00	(0.07)

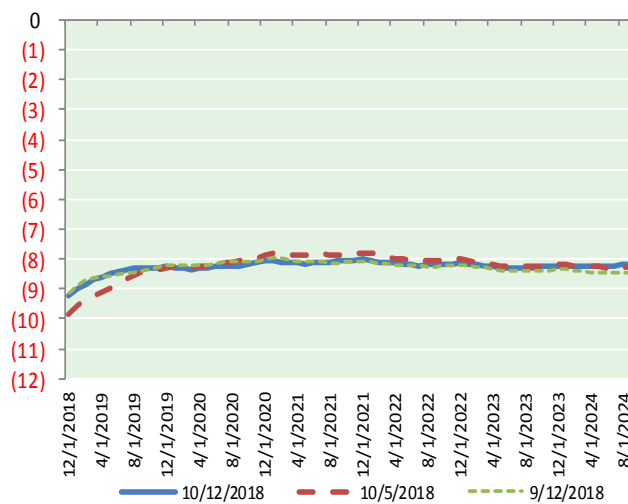
BRENT CRUDE FORWARD CURVE



WTI CRUDE FORWARD CURVE



WTI-BRENT SPREAD



FRAC Spread

Specifications

Ethane	: 42%	66,500 btu/g
Propane	: 28%	90,830 btu/g
Butane	: 11%	102,916 btu/g
Iso-Butane	: 6%	98,935 btu/g
Natural Gasoline	: 13%	115,021 btu/g

Prompt NGL Futures

	Nov-18	Close	Change
Butane		1.157	0.010
Iso-Butane		1.163	0.009
Nat Gasoline		1.586	0.004

NYMEX WTI (CL) Futures

Month	Close	Change
Dec-18	80.43	0.17
Jan-19	80.07	0.20
Feb-19	79.82	0.22
Mar-19	79.64	0.22
Apr-19	79.47	0.22
May-19	79.31	0.22
Jun-19	79.12	0.21
Jul-19	78.88	0.18
Aug-19	78.62	0.17
Sep-19	78.34	0.16
Oct-19	78.04	0.15
Nov-19	77.74	0.13
Dec-19	77.40	0.11
Jan-20	77.07	0.09
Feb-20	76.73	0.06
Mar-20	76.39	0.03
Apr-20	76.05	0.01
May-20	75.70	(0.02)
Jun-20	75.36	(0.03)
Jul-20	75.00	(0.05)
Aug-20	74.65	(0.06)
Sep-20	74.30	(0.08)
Oct-20	73.94	(0.10)
Nov-20	73.62	(0.11)
1YR Strip 2018	79.12	0.19
2018	80.43	0.17
5YR Strip	72.00	(0.08)