

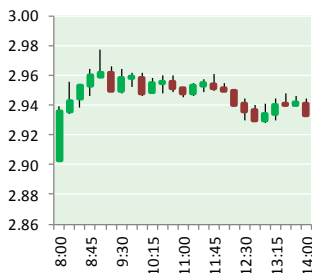
NATURAL GAS



OCTOBER 10, 2017

Prior Day's NYMEX

Nov-17 Contract (CT)



NYMEX NG Futures

Month	Close	Change
Nov-17	2.833	(0.030)
Dec-17	3.018	(0.028)
Jan-18	3.140	(0.030)
Feb-18	3.152	(0.027)
Mar-18	3.122	(0.022)
Apr-18	2.911	(0.001)
May-18	2.891	0.002
Jun-18	2.921	0.002
Jul-18	2.950	0.003
Aug-18	2.953	0.003
Sep-18	2.936	0.003
Oct-18	2.959	0.003
Nov-18	3.015	0.005
Dec-18	3.154	0.006
Jan-19	3.239	0.007
Feb-19	3.217	0.009
Mar-19	3.148	0.011
Apr-19	2.768	0.014
May-19	2.728	0.014
Jun-19	2.749	0.014
Jul-19	2.771	0.014
Aug-19	2.775	0.014
Sep-19	2.761	0.014
Oct-19	2.784	0.014
1YR Strip	2.982	(0.010)
2017	2.926	(0.029)
5YR Strip	2.894	0.006

IN THE NEWS

Hurricane Nate shuts down about 90% of Gulf of Mexico oil production — CNBC reported: Oil production slowed to a trickle in the Gulf of Mexico this weekend as energy companies turned off the taps and evacuated workers in preparation for Hurricane Nate. More than 92 percent of crude output was offline in the

- Hurricane Nate shuts down about 90% of Gulf of Mexico oil production
- The East Coast's Warm Fall Spells Trouble for Gas Bulls

nation's offshore production hub as of Sunday morning, according to the U.S. Bureau of Safety and Environmental Enforcement. Energy companies also "shut in" nearly 78 percent of natural gas production, the bureau estimated, based on reports from companies. On Monday, it appeared that much of the vast infrastructure had emerged from the storm unscathed and production at offshore platforms could soon resume. For more visit [cnbc.com](http://cnb.cx/2xwoEwQ) or click <http://cnb.cx/2xwoEwQ>

The East Coast's Warm Fall Spells Trouble for Gas Bulls – Bloomberg reported: From Boston to Chicago, overnight temperatures are lingering above 60 degrees Fahrenheit (16 Celsius) at a time when they usually begin dropping into the 50s and below, AccuWeather Inc. data show. Homes and businesses are using the least gas for seasonal heating in PointLogic Energy data going back a decade, and energy consultant EBW AnalyticsGroup predicts this "blowtorch October" will make an even bigger dent in demand before the month ends. Forecasts are showing a "huge loss of space heating demand during the second half of the month," Andrew Weissman, chief executive officer of EBW AnalyticsGroup in Washington, said in a note to clients Monday. "Unless the forecast shifts again, the November contract is likely to fall" to \$2.70 per million British thermal units or lower, at least 13 cents below Monday's close. This warmth hasn't been nationwide, however. Frost and freeze warnings and watches reached from Minnesota and Wisconsin to New Mexico and parts of Texas on Monday, according to the National Weather Service. For more on this story visit [bloomberg.com](https://bloom.bg/2y5Gz1Q) or click <https://bloom.bg/2y5Gz1Q>

12 MONTH CANDLESTICK (WEEKLY)



Prompt Natural Gas (NG) Daily Sentiment

BEARISH



RESISTANCE

2.87 & 2.91

SUPPORT

2.81 & 2.79

Trading Summary

NATURAL GAS

Futures	Close	Change
NG	2.833	(0.030)
Volume	453,095	(417,460)
Open Int.	1,380,938	(8,906)

CRUDE AND GASOLINE

Futures	Close	Change
Crude	49.58	0.29
RBOB	1.5594	0.0006
Crude/NG	17.50	0.28

METALS

Futures	Close	Change
Gold	1,281.80	8.20

EQUITIES

Exchange	Close	Change
DOW	22,661.64	19.97
S&P 500	2,544.76	(4.60)

CURRENCY

Currency	Close	Change
EUR/USD	1.1710	(0.0050)
USD/CND	1.2504	(0.0045)

Contact Us



Mansfield Energy Corp

1025 Airport Pkwy
Gainesville, GA 30501

www.mansfield.energy

info@mansfieldoil.com

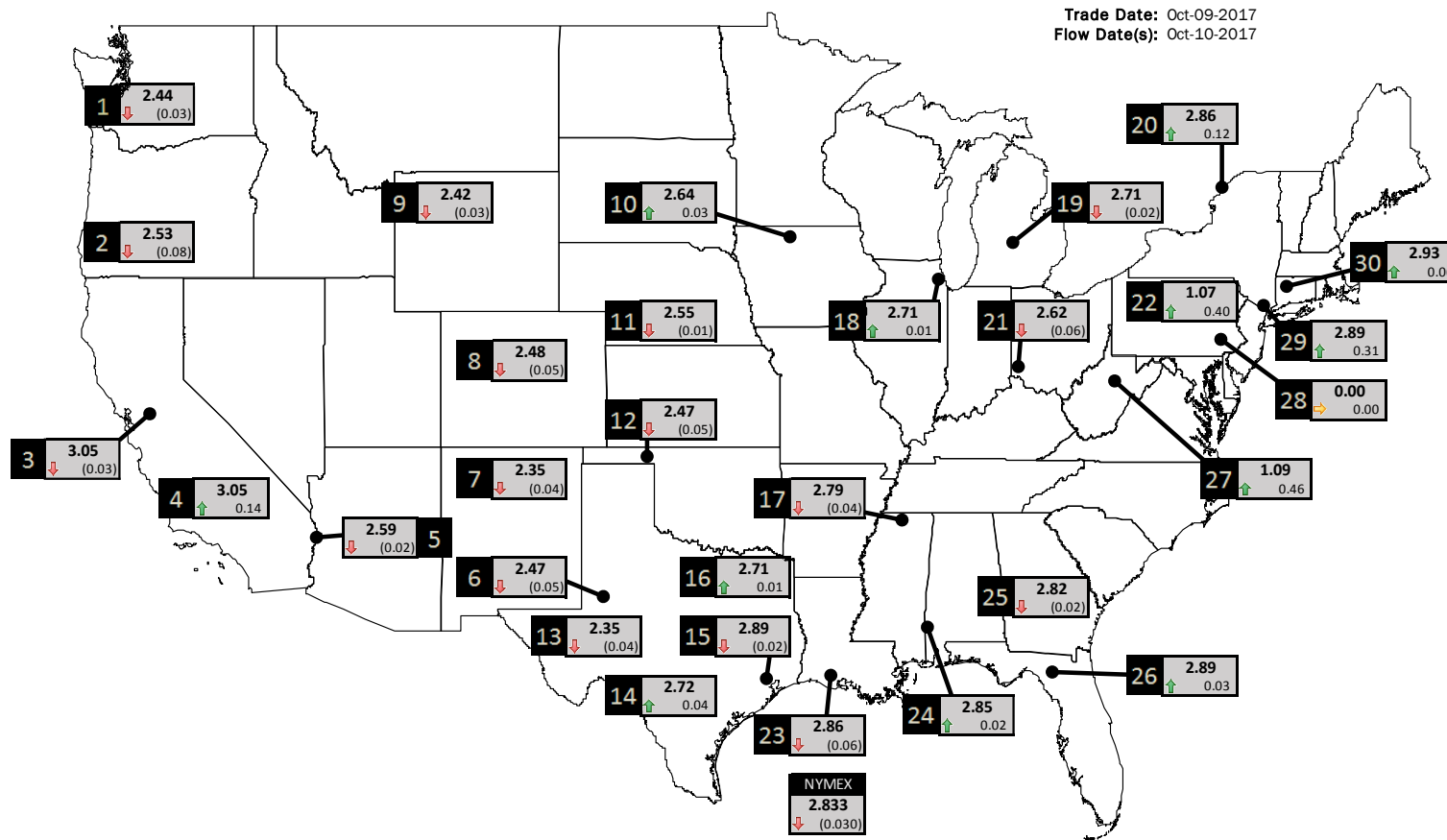
Phone: (800) 695-6626





NATURAL GAS NEWS

PHYSICAL SPOT NATURAL GAS PRICE MAP



ID	DAILY INDEX	PRICE	CHANGE
1	Stanfield	2.44	(0.03)
2	Malin	2.53	(0.08)
3	PG&E - Citygate	3.05	(0.03)
4	SoCal-Citygate	3.05	0.14
5	SoCal Border	2.59	(0.02)
6	Waha	2.47	(0.05)
7	EPSJ Blanco Pool	2.35	(0.04)
8	Opal Plant Tailgate	2.48	(0.05)
9	NWP-Wyoming	2.42	(0.03)
10	Ventura	2.64	0.03

ID	DAILY INDEX	PRICE	CHANGE
11	NGPL-Midcont Pool	2.55	(0.01)
12	Panhandle	2.47	(0.05)
13	EP-Permian	2.35	(0.04)
14	TGP-ZO	2.72	0.04
15	Houston Ship Channel	2.89	(0.02)
16	NGPL-TXOK	2.71	0.01
17	TETCO-M1 30	2.79	(0.04)
18	Chicago Citygates	2.71	0.01
19	Michcon	2.71	(0.02)
20	Iroquois (into)	2.86	0.12

ID	DAILY INDEX	PRICE	CHANGE
21	REX E-ANR	2.62	(0.06)
22	Leidy-Transco	1.07	0.40
23	Henry	2.86	(0.06)
24	Transco-85	2.85	0.02
25	Sonat-ZO South	2.82	(0.02)
26	FGT-Z3	2.89	0.03
27	Dominion-South	1.09	0.46
28	Transco-Z6 (non-NY)	0.00	0.00
29	Transco-Z6 (NY)	2.89	0.31
30	Iroquois-Z2	2.93	0.06

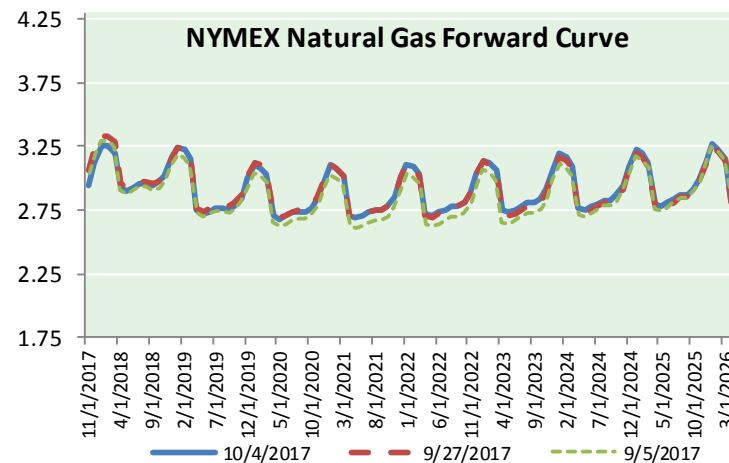
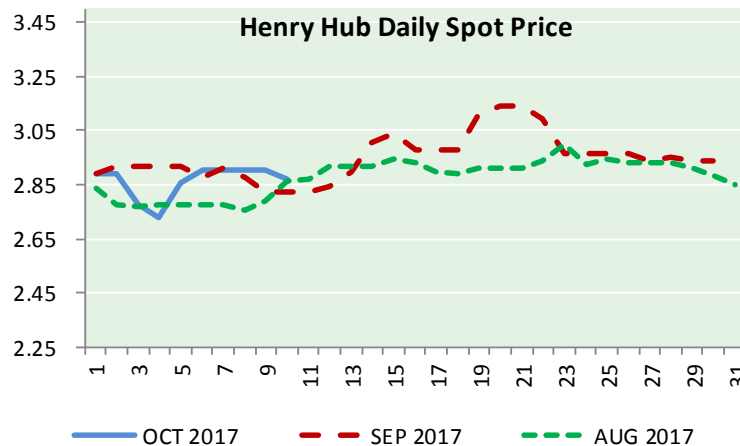
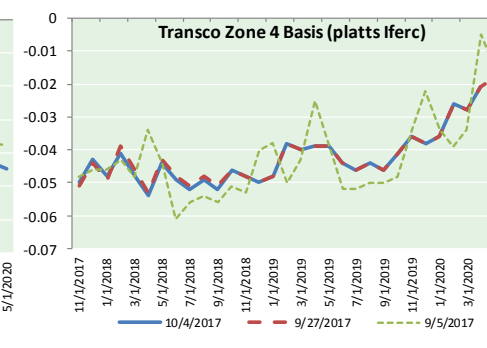
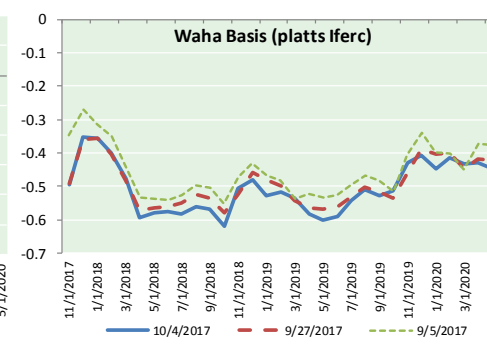
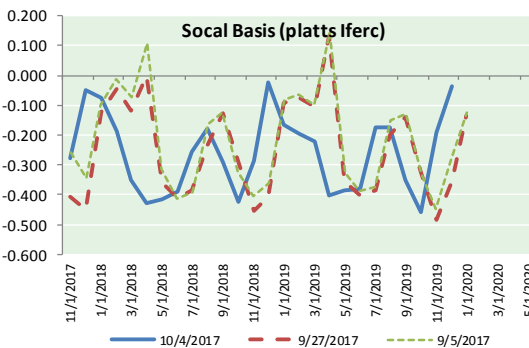
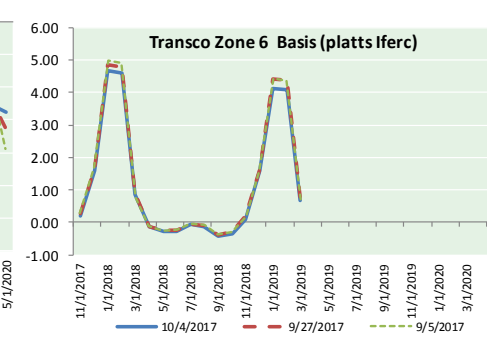
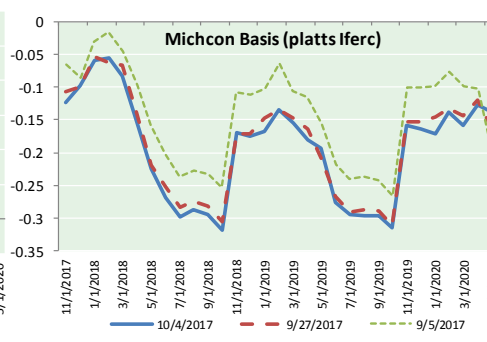
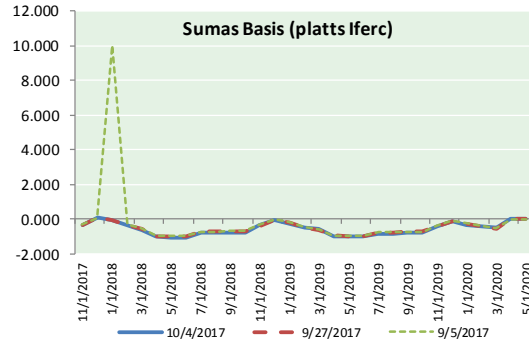
DISCLAIMER: The content herein is privileged and confidential. Content is presented for informational purposes and is a reflection of the market opinions of its authors subject to change without notice. Content is derived from sources believed to be accurate at the time of release but carries no guarantee of accuracy or completeness. Mansfield Energy Corp and its clients may or may not take positions similar or opposite those discussed herein. The reader should realize that the trading of commodities involves risk, and the reader assumes all responsibility for the risk of financial losses.





NATURAL GAS NEWS

NATURAL GAS BASIS FUTURES, HENRY HUB SPOT PRICES, AND FORWARD CURVE



CME NG Option Prices

ATM Call

Month	Strike	Close	Imp Vol
Nov-17	2.900	0.053	26.2
Dec-17	3.050	0.136	30.0
Jan-18	3.150	0.220	35.6
Feb-18	3.200	0.265	39.4
Mar-18	3.150	0.317	41.2
Apr-18			
May-18			
Jun-18			
Jul-18			
Aug-18			
Sep-18			
Oct-18			
Nov-18			
Dec-18			
Jan-19			
Feb-19			
Mar-19			

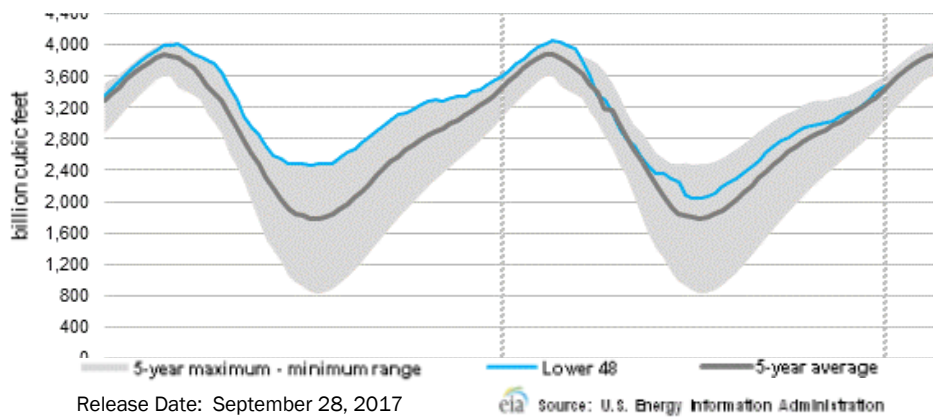
CME NG Option Prices

ATM Put

Month	Strike	Close	Imp Vol
Nov-17	2.900	0.121	45.0
Dec-17	3.050	0.173	39.4
Jan-18	3.150	0.229	41.2
Feb-18	3.200	0.309	43.1
Mar-18	3.150	0.347	45.0
Apr-18			
May-18			
Jun-18			
Jul-18			
Aug-18			
Sep-18			
Oct-18			
Nov-18			
Dec-18			
Jan-19			
Feb-19			
Mar-19			



WEEKLY GAS IN UNDERGROUND STORAGE WITH 5-YR RANGE



Rig Count

Report Date: October 6, 2017

	Total	Change
US -	936	(4)
CN -	209	(4)

EIA Storage History for 40th Week of Year (Due to Report Oct 12)

Year	Week Ending	BCF
2013	Oct 4, 2013	+90
2014	Oct 3, 2014	+106
2015	Oct 2, 2015	+96
2016	Sep 30, 2016	+49

ESTIMATE – TBD

Total Working Gas In Storage

3,466 BCF

- +58 BCF (LAST WEEK)
- (127) BCF (LAST YEAR)
- +41 BCF (5-YR AVG)

U.S. Natural Gas Supply Gas Week 9/21 - 9/27

Average daily values (BCF/D):
Last Year (BCF/d)
 Dry Production — +69.9
 Total Supply — +75.9
Last Week (BCF/d)
 Dry Production — +74.5
 Total Supply — +80.2

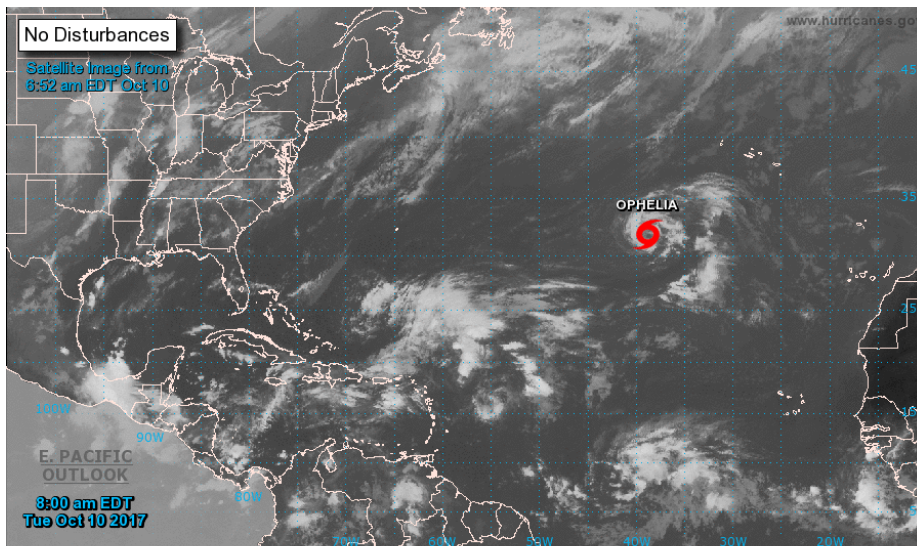
[NEXT REPORT ON OCT 5]

U.S. Natural Gas Demand Gas Week 9/21 - 9/27

Average daily values (BCF/D):
Last Year (BCF/d)
 Power — +30.9
 Total Demand — +66.9
Last Week (BCF/d)
 Power — +31.2
 Total Demand — +71.2

[NEXT REPORT ON OCT 5]

TROPICAL STORM ACTIVITY— ATLANTIC



Tropical Weather Outlook
 NWS National Hurricane Center Miami FL
 800 AM EDT Tue Oct 10 2017

For the North Atlantic...Caribbean Sea and the Gulf of Mexico:

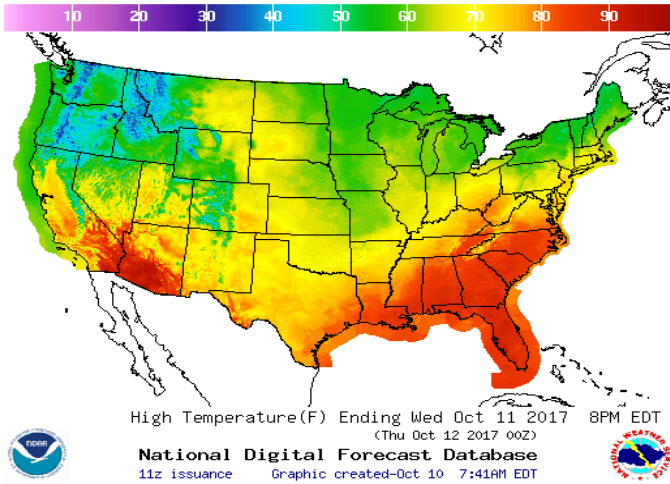
The National Hurricane Center is issuing advisories on Tropical Storm Ophelia, located over the eastern Atlantic Ocean about 800 miles west-southwest of the Azores.

Tropical cyclone formation is not expected during the next 5 days.

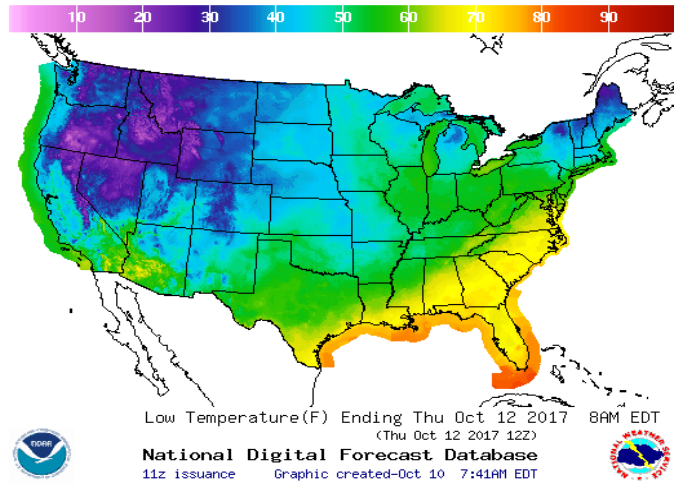
Forecaster Stewart

WEATHER – HIGH / LOW TEMPERATURE TOMORROW

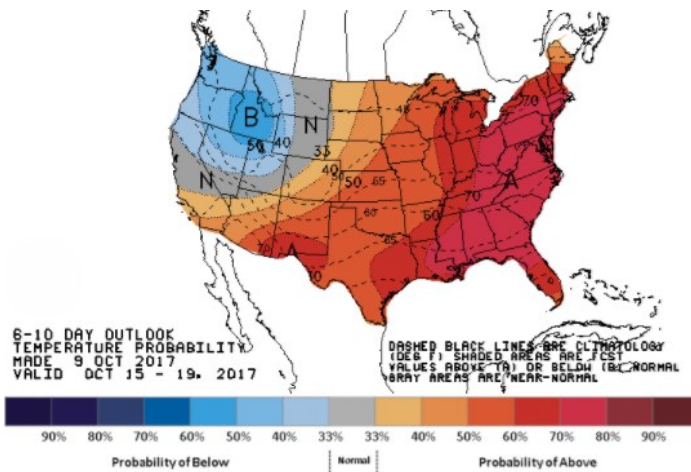
HIGH Temperature



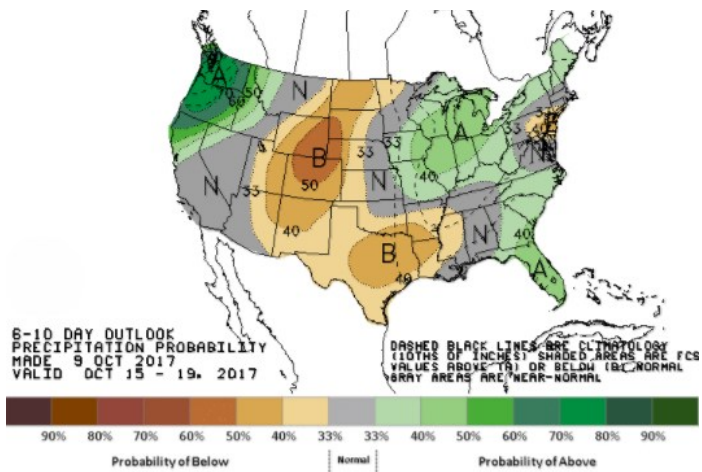
LOW Temperature



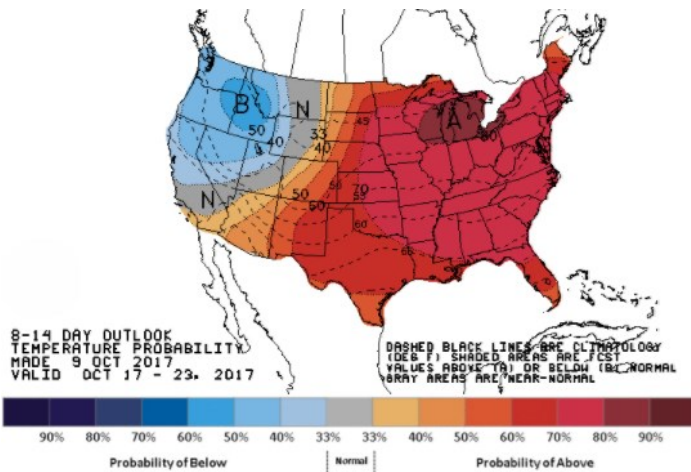
WEATHER – 6 TO 10 DAY OUTLOOK – NOAA
Temperature



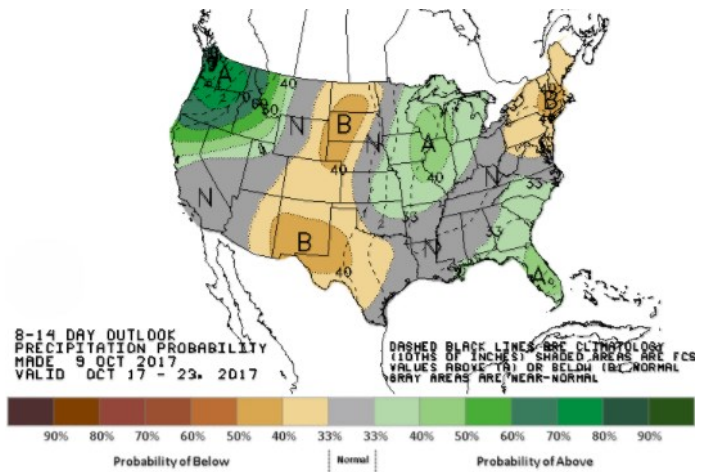
Precipitation



WEATHER – 8 TO 14 DAY OUTLOOK – NOAA
Temperature



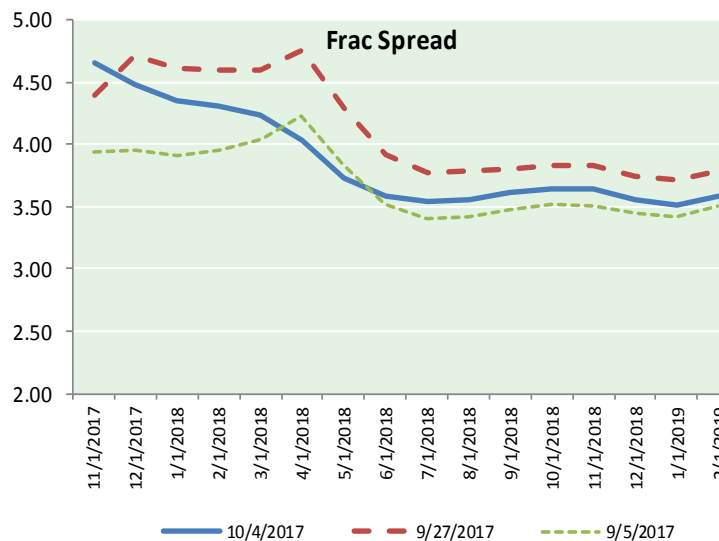
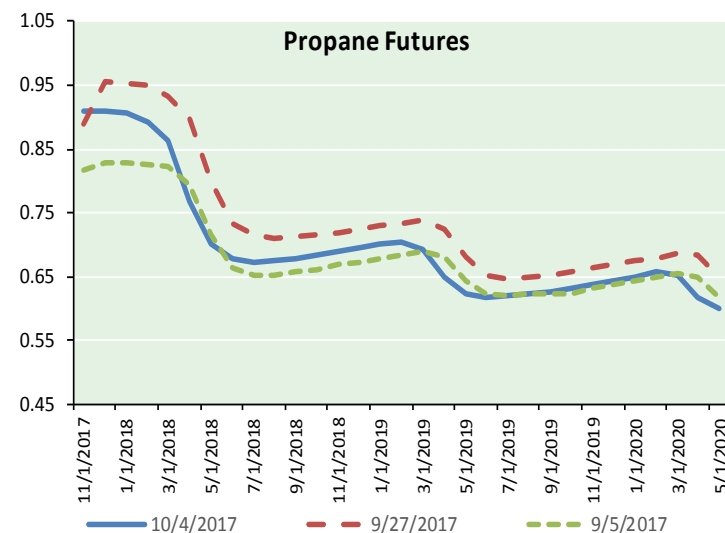
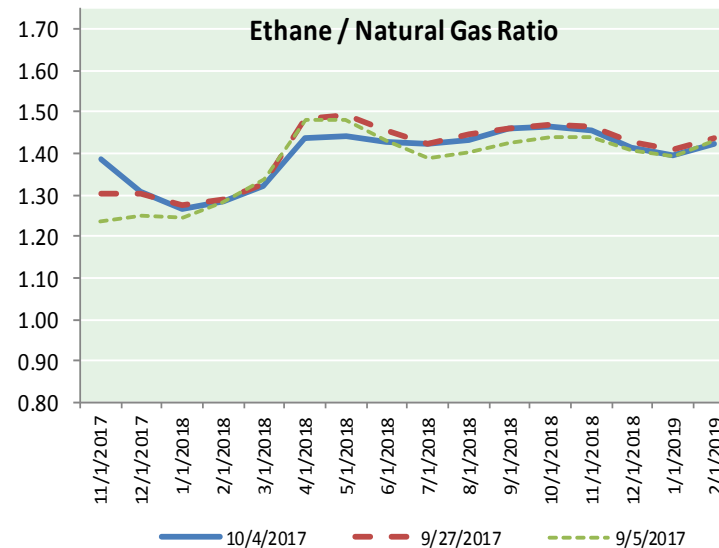
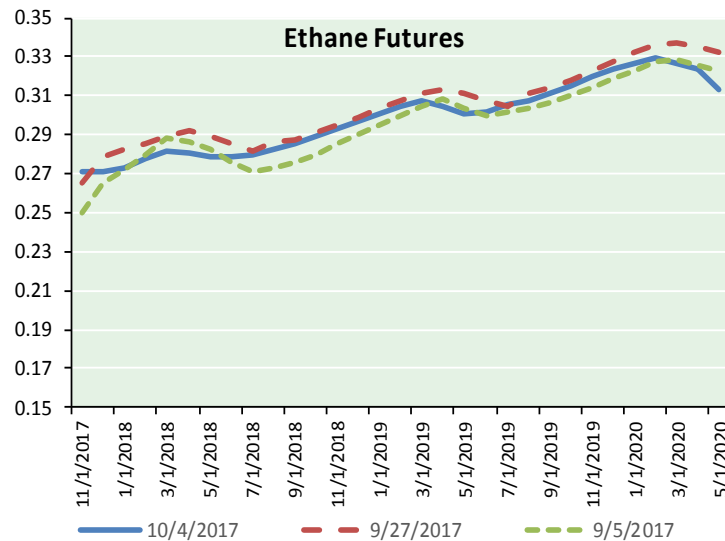
Precipitation



NATURAL GAS NEWS



ETHANE FUTURES, NG/ETHANE RATIO, PROPANE FUTURES, AND THE FRAC SPREAD



CME Future Prices

Ethane (C2)

Non-LDH— Mont Belvieu

Month	Close	Change
Nov-17	0.271	0.003
Dec-17	0.271	0.004
Jan-18	0.273	0.004
Feb-18	0.278	0.004
Mar-18	0.282	0.003
Apr-18	0.280	0.003
May-18	0.279	0.003
Jun-18	0.279	0.002
Jul-18	0.280	0.002
Aug-18	0.282	0.002
Sep-18	0.285	0.002
Oct-18	0.289	0.002

1YR Strip 0.279 0.003

CME Future Prices

Propane (C3)

Non-LDH— Mont Belvieu

Month	Close	Change
Nov-17	0.909	0.039
Dec-17	0.911	0.041
Jan-18	0.906	0.038
Feb-18	0.893	0.036
Mar-18	0.863	0.034
Apr-18	0.767	0.025
May-18	0.701	0.020
Jun-18	0.679	0.017
Jul-18	0.673	0.016
Aug-18	0.675	0.015
Sep-18	0.679	0.014
Oct-18	0.684	0.014

1YR Strip 0.778 0.026

NATURAL GAS NEWS



Prompt WTI (CL) Crude Daily Sentiment

BULLISH



RESISTANCE
49.87 & 50.16
SUPPORT
49.21 & 48.84

FOLLOW US ON TWITTER:



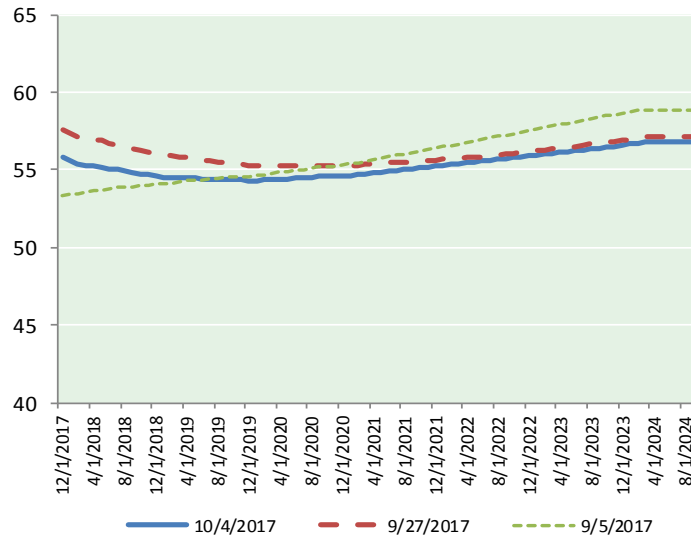
@MPG_NatGasNews

NYMEX Brent (BZ)

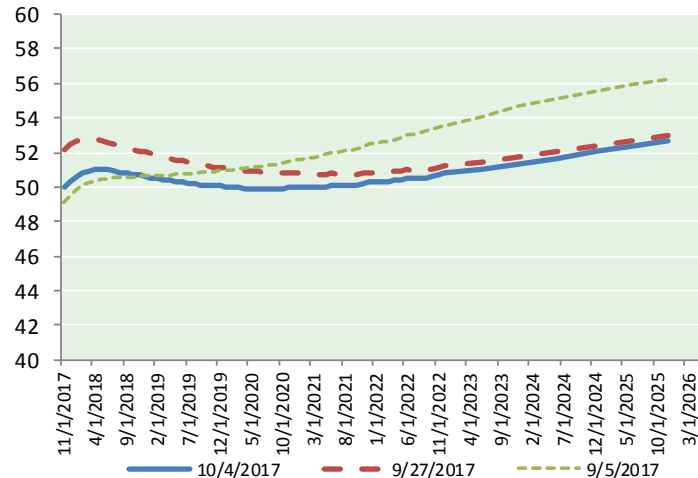
Futures

Month	Close	Change
Dec-17	55.79	0.17
Jan-18	55.54	0.18
Feb-18	55.30	0.17
Mar-18	55.14	0.16
Apr-18	55.03	0.16
May-18	54.92	0.15
Jun-18	54.80	0.14
Jul-18	54.71	0.13
Aug-18	54.61	0.13
Sep-18	54.51	0.13
Oct-18	54.43	0.14
Nov-18	54.36	0.14
Dec-18	54.29	0.14
Jan-19	54.23	0.14
Feb-19	54.20	0.14
Mar-19	54.17	0.14
Apr-19	54.17	0.14
May-19	54.12	0.14
Jun-19	54.05	0.15
Jul-19	54.06	0.15
Aug-19	54.02	0.14
Sep-19	54.01	0.13
Oct-19	54.02	0.12
Nov-19	53.97	0.12
1YR Strip 2017	54.93	0.15
5YR Strip	54.48	0.13

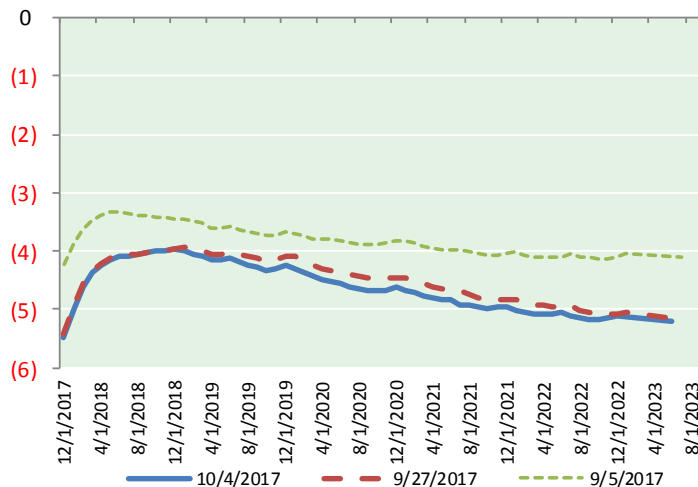
BRENT CRUDE FORWARD CURVE



WTI CRUDE FORWARD CURVE



WTI-BRENT SPREAD



FRAC Spread

Specifications

Ethane : 42%	66,500 btu/g
Propane: 28%	90,830 btu/g
Butane: 11%	102,916 btu/g
Iso-Butane: 6%	98,935 btu/g
Natural Gasoline: 13%	115,021 btu/g

Prompt NGL Futures

(\$/gallon)

	Nov-17	Close	Change
Butane	1.040	0.027	
Iso-Butane	1.038	0.019	
Nat Gasoline	1.179	0.002	

NYMEX WTI (CL) Futures

Month	Close	Change
Nov-17	49.58	0.29
Dec-17	49.93	0.28
Jan-18	50.18	0.26
Feb-18	50.38	0.26
Mar-18	50.53	0.26
Apr-18	50.63	0.27
May-18	50.68	0.28
Jun-18	50.70	0.29
Jul-18	50.68	0.30
Aug-18	50.64	0.30
Sep-18	50.60	0.29
Oct-18	50.56	0.29
Nov-18	50.53	0.28
Dec-18	50.50	0.27
Jan-19	50.43	0.27
Feb-19	50.36	0.27
Mar-19	50.29	0.26
Apr-19	50.24	0.26
May-19	50.19	0.26
Jun-19	50.17	0.26
Jul-19	50.11	0.26
Aug-19	50.05	0.26
Sep-19	50.00	0.26
Oct-19	49.96	0.25
1YR Strip 2017	50.42	0.28
5YR Strip	49.76	0.29
	50.09	0.24