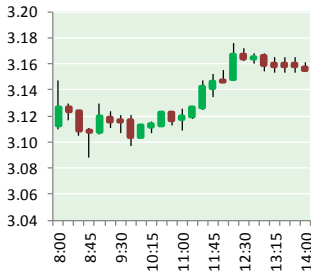


NATURAL GAS



NOVEMBER 8, 2017

Prior Day's NYMEX Dec-17 Contract (CT)



NYMEX NG Futures

Month	Close	Change
Dec-17	3.152	0.018
Jan-18	3.251	0.019
Feb-18	3.252	0.021
Mar-18	3.212	0.023
Apr-18	2.965	0.012
May-18	2.938	0.010
Jun-18	2.965	0.010
Jul-18	2.995	0.009
Aug-18	2.998	0.008
Sep-18	2.981	0.008
Oct-18	3.003	0.008
Nov-18	3.055	0.008
Dec-18	3.190	0.008
Jan-19	3.269	0.006
Feb-19	3.234	0.004
Mar-19	3.153	(0.002)
Apr-19	2.791	(0.002)
May-19	2.741	(0.007)
Jun-19	2.762	(0.008)
Jul-19	2.785	(0.008)
Aug-19	2.785	(0.008)
Sep-19	2.769	(0.007)
Oct-19	2.791	(0.008)
Nov-19	2.851	(0.011)
1YR Strip	3.064	0.013
2017	3.152	0.018
5YR Strip	2.916	(0.001)

IN THE NEWS

Transco asks US court to clarify stay for Atlantic Sunrise natural gas pipeline — Platts reported: Transcontinental Gas Pipe Line has asked the US Court of Appeals for the District of Columbia Circuit to clarify the reach of a temporary administrative stay of the certificate authorization for the Atlantic Sunrise natural gas pipeline project the court ordered Monday. In a Tuesday morning

- **Transco asks US court to clarify stay for Atlantic Sunrise natural gas pipeline**
- **CMA CGM is the first shipping company to choose liquefied natural gas for its biggest ships**

filing, Transco warned that if the stay applied beyond Pennsylvania -- including to parts of the project already in service -- it could impede service to existing Transco customers. The DC Circuit Monday granted a temporary stay, pausing construction to give the court time to consider an emergency stay request that environment groups filed (Allegheny Defense Project, et al., v. US Federal Energy Regulatory Commission). The court Tuesday ordered the petitioners to respond to Transco's motion for clarification by 2 pm the same day. For more visit [platts.com](http://bit.ly/2hdjDna) or click <http://bit.ly/2hdjDna>

CMA CGM is the first shipping company to choose liquefied natural gas for its biggest ships – AJOT reported: On the occasion of the COP23 in Bonn (Germany), the CMA CGM Group, a world leader in maritime transport, is pleased to announce its decision to equip its 9 future ships of 22,000 TEUs (Twenty-foot Equivalent Unit), delivered in 2020, with engines using liquefied natural gas. CMA CGM is becoming the first shipping company in the world to equip giant containerhips with this type of motorisation, thus pursuing its firm commitment to the protection of the environment and to ocean conservation. These containerhips will be LNG-powered – a few percent of marine gas oil will only be used for the ignition in the combustion chamber. By choosing LNG, the CMA CGM Group goes beyond current and future regulations that limit the sulphur cap to 0.5% in 2020. The Group is also fully in line with the Paris Agreement and the ongoing discussions at the international level. For more visit ajot.com or click <http://bit.ly/2yH4vK4>

12 MONTH CANDLESTICK (WEEKLY)



Prompt Natural Gas (NG) Daily Sentiment

NEUTRAL



RESISTANCE
3.18 & 3.22
SUPPORT
3.10 & 3.05

Trading Summary

NATURAL GAS

Futures	Close	Change
NG	3.152	0.018
Volume	380,266	(94,644)
Open Int.	1,390,950	(6,746)

CRUDE AND GASOLINE

Futures	Close	Change
Crude	57.20	(0.15)
RBOB	1.8153	(0.0147)
Crude/NG	18.15	(0.15)

METALS

Futures	Close	Change
Gold	1,275.80	

EQUITIES

Exchange	Close	Change
DOW	23,557.23	8.81
S&P 500	2,590.64	(0.49)

CURRENCY

Currency	Close	Change
EUR/USD	1.1587	(0.0023)
USD/CND	1.2722	(0.0046)

Contact Us



Mansfield Energy Corp
1025 Airport Pkwy
Gainesville, GA 30501

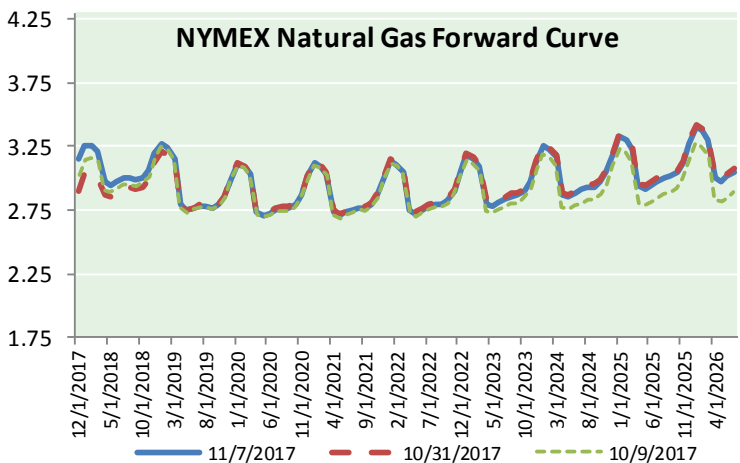
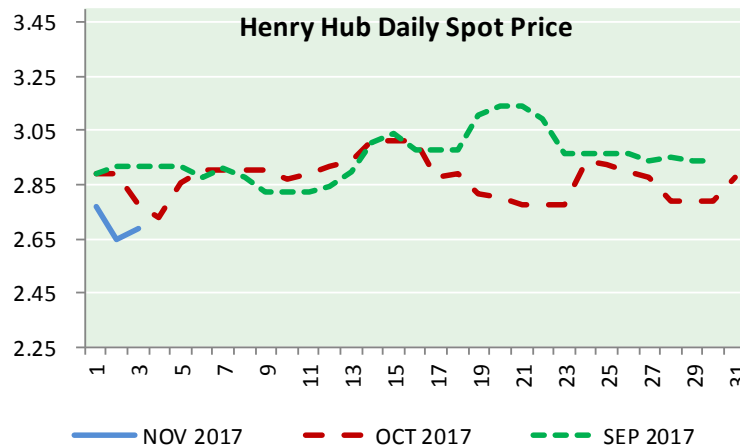
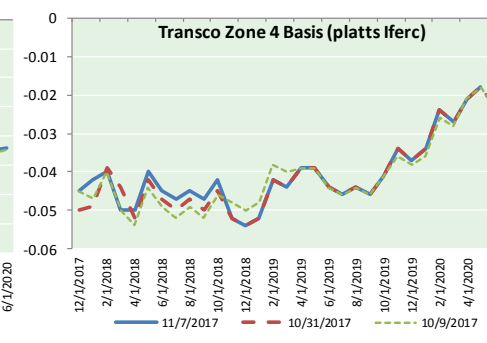
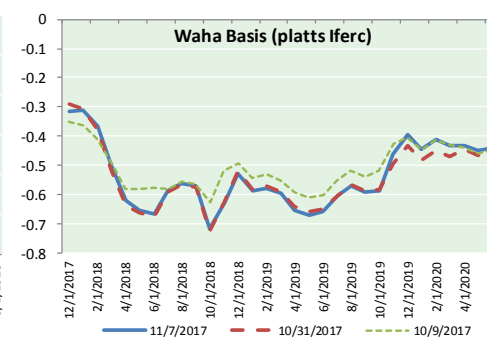
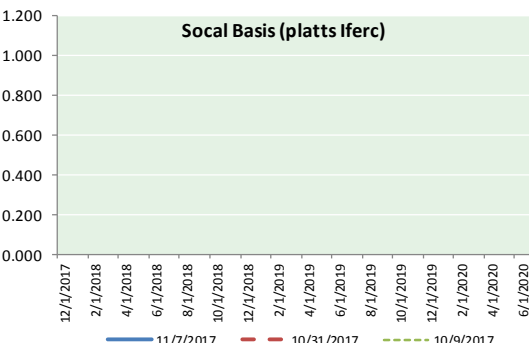
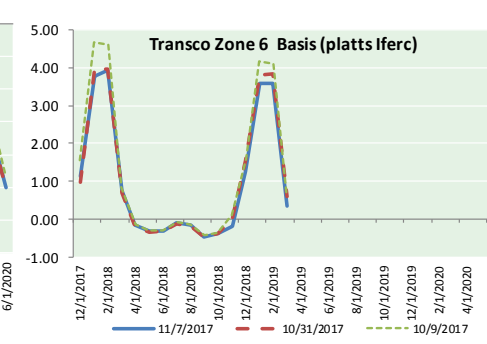
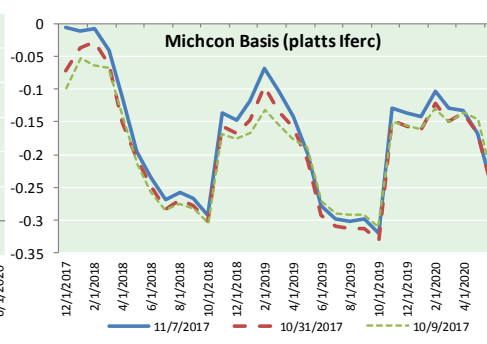
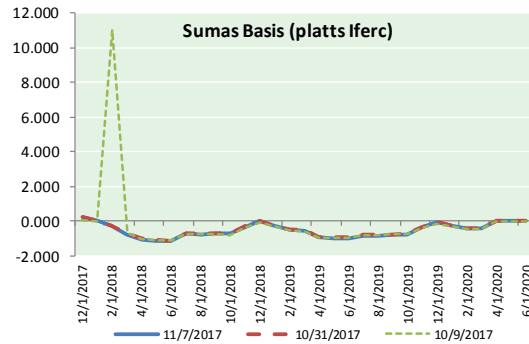
www.mansfield.energy
info@mansfieldoil.com

Phone: (800) 695-6626





NATURAL GAS BASIS FUTURES, HENRY HUB SPOT PRICES, AND FORWARD CURVE



CME NG Option Prices

ATM Call

Month	Strike	Close	Imp Vol
Dec-17	3.150	0.104	37.5
Jan-18	3.250	0.216	46.8
Feb-18	3.250	0.279	46.8
Mar-18	3.200	0.327	46.8
Apr-18	2.950	0.232	30.9
May-18			
Jun-18			
Jul-18			
Aug-18			
Sep-18			
Oct-18			
Nov-18			
Dec-18			
Jan-19			
Feb-19			
Mar-19			
Apr-19			

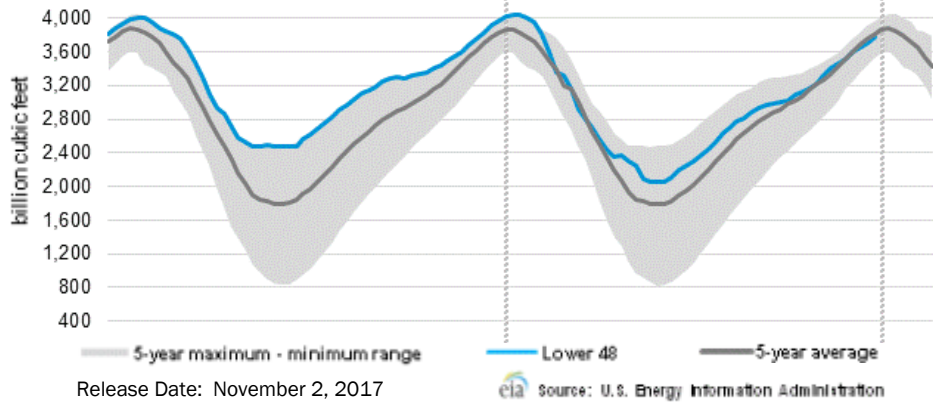
CME NG Option Prices

ATM Put

Month	Strike	Close	Imp Vol
Dec-17	3.150	0.123	41.2
Jan-18	3.250	0.209	43.1
Feb-18	3.250	0.278	45.0
Mar-18	3.200	0.318	45.9
Apr-18	2.950	0.213	30.0
May-18			
Jun-18			
Jul-18			
Aug-18			
Sep-18			
Oct-18			
Nov-18			
Dec-18			
Jan-19			
Feb-19			
Mar-19			
Apr-19			

NATURAL GAS NEWS

WEEKLY GAS IN UNDERGROUND STORAGE WITH 5-YR RANGE



Rig Count

Report Date: November 3, 2017

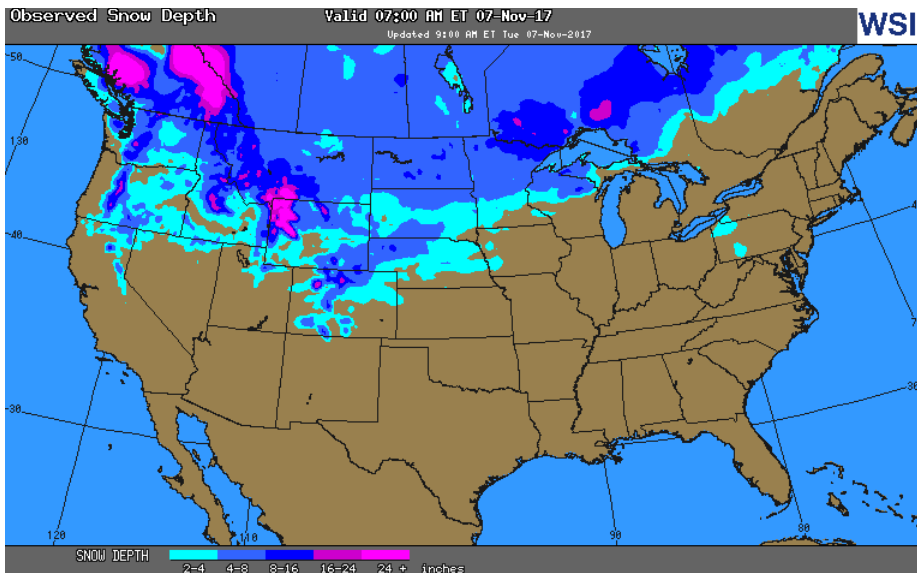
	Total	Change
US -	898	(11)
CN -	192	+1

EIA Storage History for 44th Week of Year (Due to Report Nov 9)

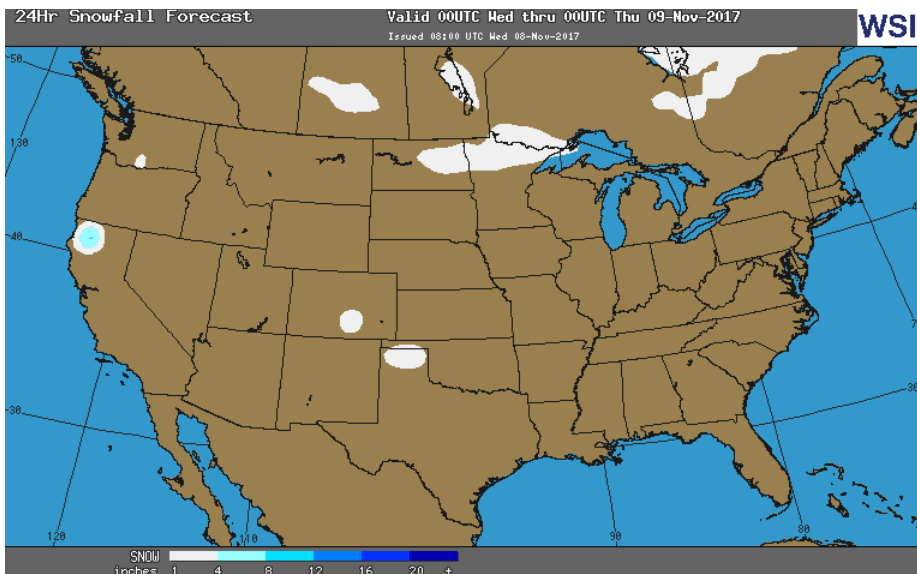
Year	Week Ending	BCF
2013	Nov 01, 2013	+37
2014	Oct 31, 2014	+91
2015	Oct 30, 2015	+56
2016	Oct 28, 2016	+54

ESTIMATE — +TBD

OBSERVED SNOW DEPTH



24 HOUR SNOWFALL FORECAST



Total Working Gas In Storage

3,775 BCF

- +65 BCF (LAST WEEK)
- (180) BCF (LAST YEAR)
- (41) BCF (5-YR AVG)

U.S. Natural Gas Supply Gas Week 10/26- 11/1

Average daily values (BCF/D):

- Last Year (BCF/d)
- Dry Production — +70.8
- Total Supply — +77.2
- Last Week (BCF/d)
- Dry Production — +74.6
- Total Supply — +80.4

[NEXT REPORT ON Nov 9]

U.S. Natural Gas Demand Gas Week 10/26 - 11/1

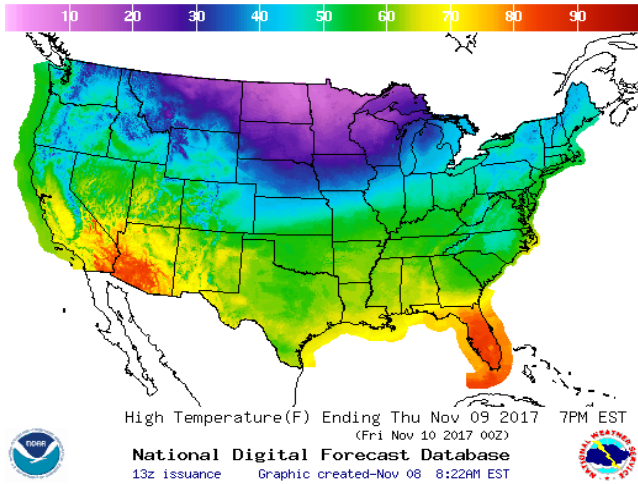
Average daily values (BCF/D):

- Last Year (BCF/d)
- Power — +24.0
- Total Demand — +71.8
- Last Week (BCF/d)
- Power — +23.8
- Total Demand — +69.8

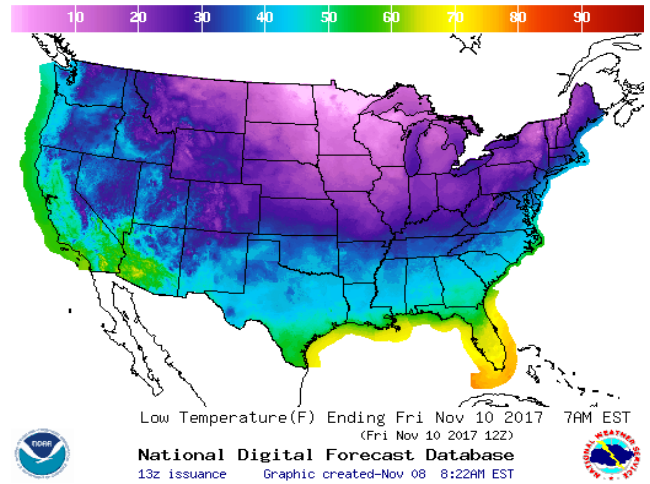
[NEXT REPORT ON Nov 9]

WEATHER – HIGH / LOW TEMPERATURE TOMORROW

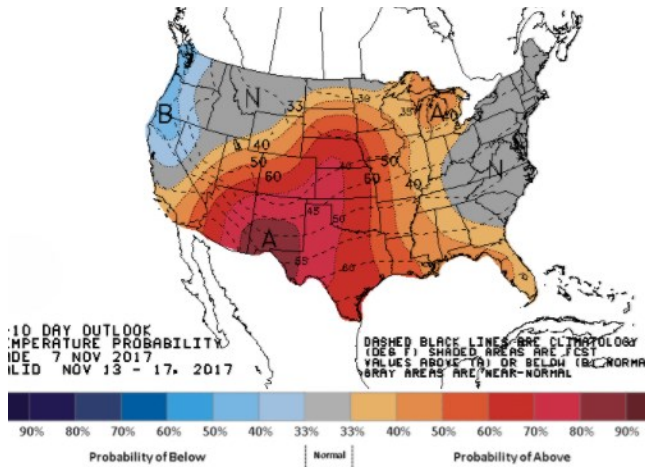
HIGH Temperature



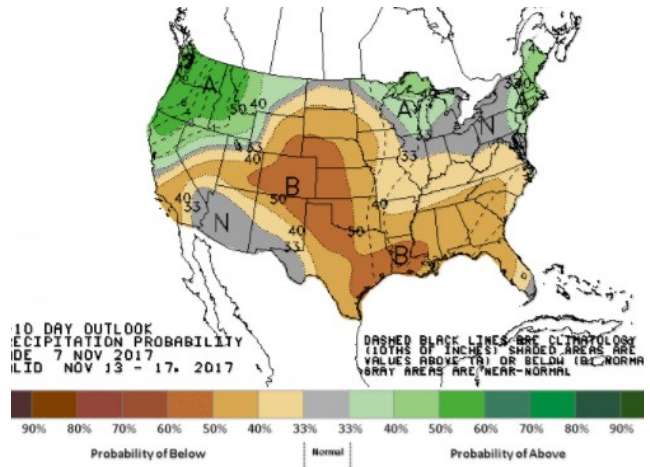
LOW Temperature



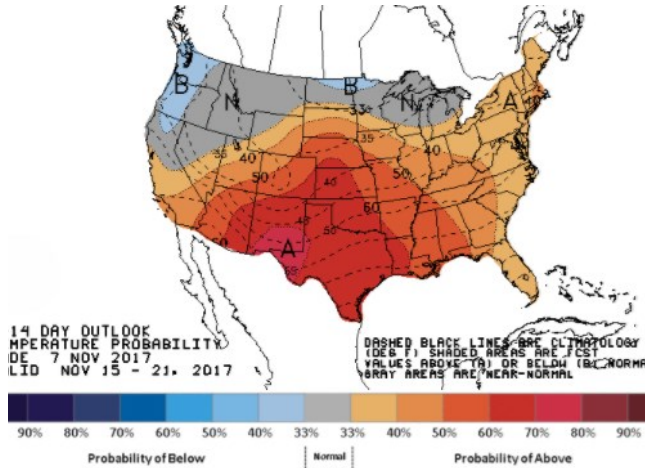
WEATHER – 6 TO 10 DAY OUTLOOK – NOAA
Temperature



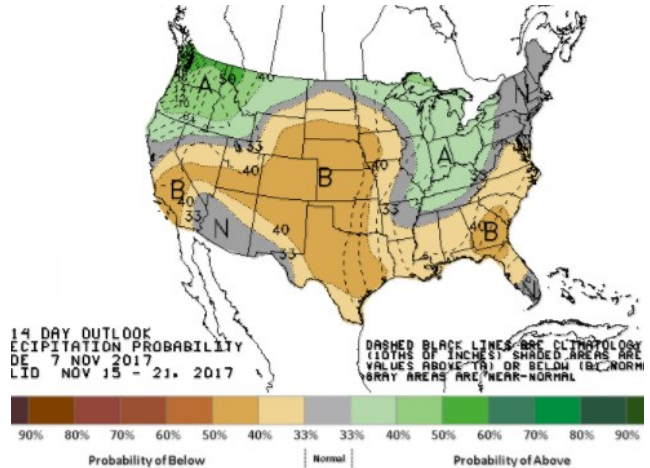
Precipitation



WEATHER – 8 TO 14 DAY OUTLOOK – NOAA
Temperature



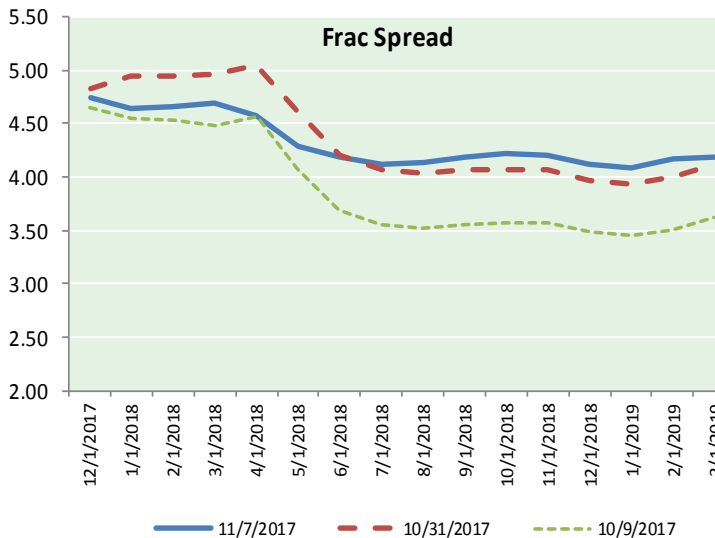
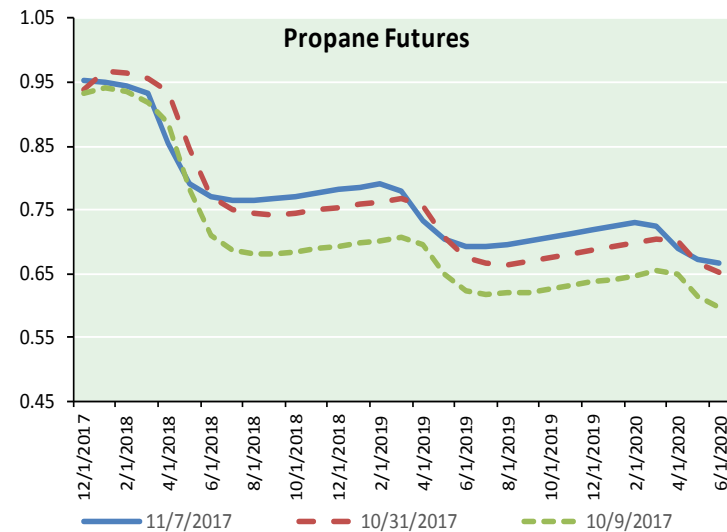
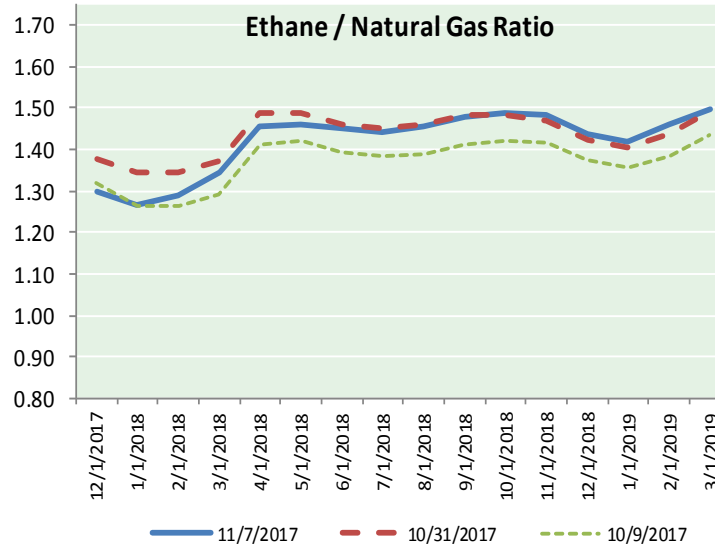
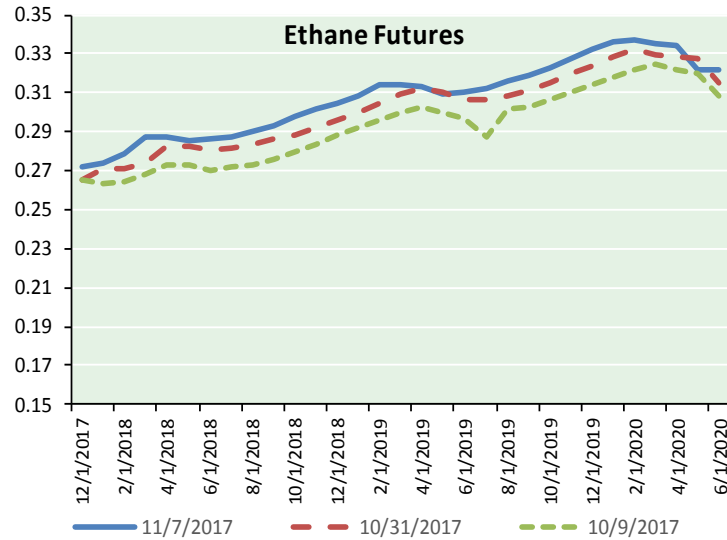
Precipitation





NATURAL GAS NEWS

ETHANE FUTURES, NG/ETHANE RATIO, PROPANE FUTURES, AND THE FRAC SPREAD



CME Future Prices

Ethane (C2)

Non-LDH— Mont Belvieu

Month	Close	Change
Dec-17	0.272	(0.004)
Jan-18	0.274	(0.005)
Feb-18	0.279	(0.005)
Mar-18	0.287	(0.004)
Apr-18	0.287	(0.004)
May-18	0.286	(0.003)
Jun-18	0.286	(0.003)
Jul-18	0.288	(0.003)
Aug-18	0.290	(0.003)
Sep-18	0.293	(0.002)
Oct-18	0.298	(0.003)
Nov-18	0.301	(0.003)

1YR Strip 0.287 (0.003)

CME Future Prices

Propane (C3)

Non-LDH— Mont Belvieu

Month	Close	Change
Dec-17	0.952	(0.029)
Jan-18	0.949	(0.036)
Feb-18	0.945	(0.035)
Mar-18	0.934	(0.030)
Apr-18	0.856	(0.023)
May-18	0.790	(0.016)
Jun-18	0.771	(0.015)
Jul-18	0.765	(0.012)
Aug-18	0.764	(0.012)
Sep-18	0.768	(0.011)
Oct-18	0.771	(0.012)
Nov-18	0.776	(0.011)

1YR Strip 0.837 (0.020)

NATURAL GAS NEWS



Prompt WTI (CL) Crude

Daily Sentiment

BULLISH



RESISTANCE

57.65 & 58.10

SUPPORT

56.79 & 56.38

FOLLOW US ON TWITTER:



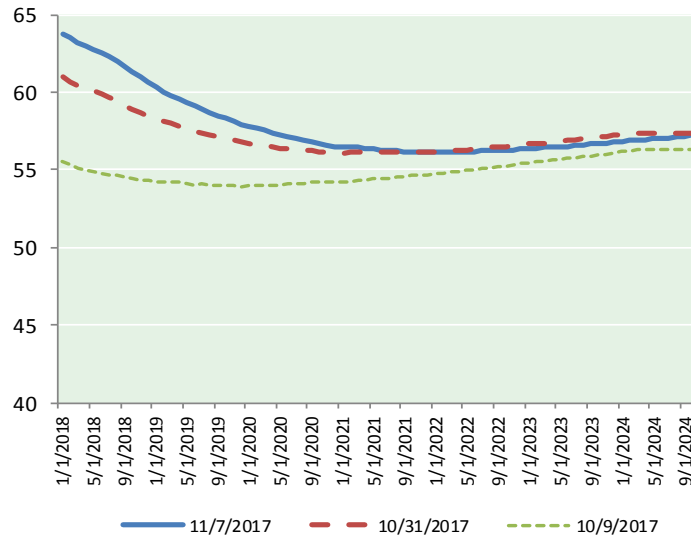
@MPG_NatGasNews

NYMEX Brent (BZ)

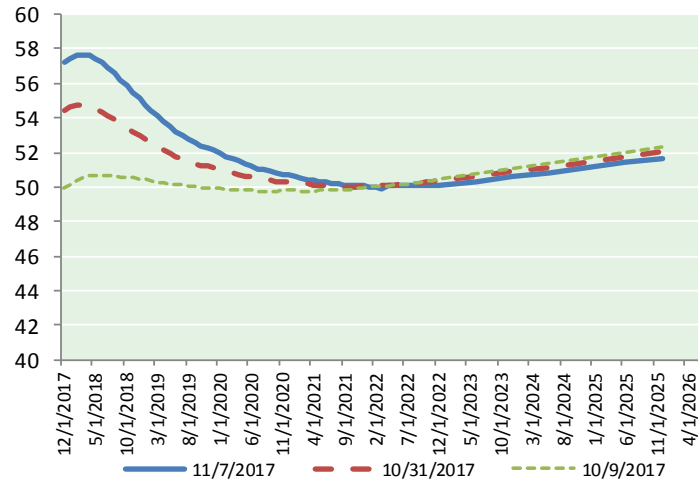
Futures

Month	Close	Change
Jan-18	63.69	(0.58)
Feb-18	63.47	(0.49)
Mar-18	63.21	(0.42)
Apr-18	62.99	(0.36)
May-18	62.79	(0.30)
Jun-18	62.55	(0.24)
Jul-18	62.27	(0.20)
Aug-18	61.97	(0.16)
Sep-18	61.64	(0.13)
Oct-18	61.30	(0.12)
Nov-18	60.96	(0.10)
Dec-18	60.62	(0.10)
Jan-19	60.31	(0.09)
Feb-19	60.04	(0.09)
Mar-19	59.80	(0.08)
Apr-19	59.60	(0.07)
May-19	59.36	(0.07)
Jun-19	59.09	(0.06)
Jul-19	58.91	(0.04)
Aug-19	58.68	(0.03)
Sep-19	58.49	(0.02)
Oct-19	58.35	0.00
Nov-19	58.15	0.02
Dec-19	57.93	0.04
1YR Strip	62.29	(0.27)
2017	#DIV/0!	#DIV/0!
5YR Strip	58.10	0.02

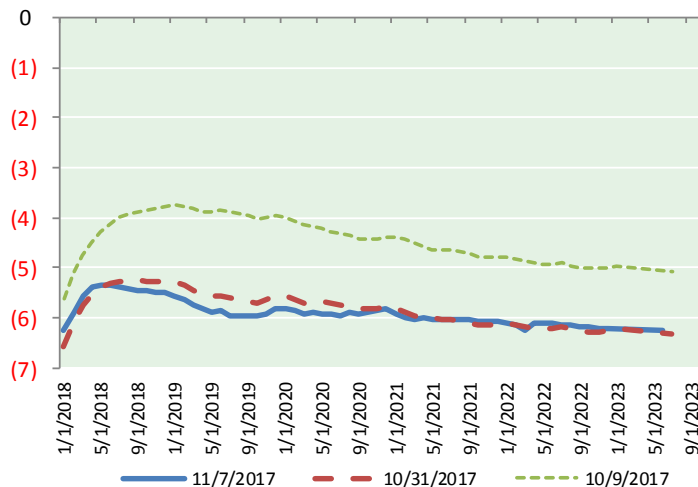
BRENT CRUDE FORWARD CURVE



WTI CRUDE FORWARD CURVE



WTI-BRENT SPREAD



FRAC Spread

Specifications

Ethane :	42%	66,500 btu/g
Propane :	28%	90,830 btu/g
Butane :	11%	102,916 btu/g
Iso-Butane :	6%	98,935 btu/g
Natural Gasoline :	13%	115,021 btu/g

Prompt NGL Futures

(\$/gallon)

	Dec-17	Close	Change
Butane	1.009	(0.034)	
Iso-Butane	1.006	(0.034)	
Nat Gasoline	1.373	(0.011)	

NYMEX WTI (CL) Futures

Month	Close	Change
Dec-17	57.20	(0.15)
Jan-18	57.43	(0.14)
Feb-18	57.59	(0.11)
Mar-18	57.63	(0.09)
Apr-18	57.59	(0.06)
May-18	57.45	(0.03)
Jun-18	57.21	0.00
Jul-18	56.90	0.02
Aug-18	56.56	0.05
Sep-18	56.20	0.07
Oct-18	55.84	0.08
Nov-18	55.48	0.09
Dec-18	55.12	0.08
Jan-19	54.75	0.09
Feb-19	54.40	0.11
Mar-19	54.07	0.12
Apr-19	53.77	0.14
May-19	53.48	0.15
Jun-19	53.23	0.15
Jul-19	52.96	0.16
Aug-19	52.73	0.16
Sep-19	52.54	0.17
Oct-19	52.37	0.17
Nov-19	52.23	0.18
1YR Strip	56.92	(0.02)
2017	57.20	(0.15)
5YR Strip	52.34	0.24