

# NATURAL GAS

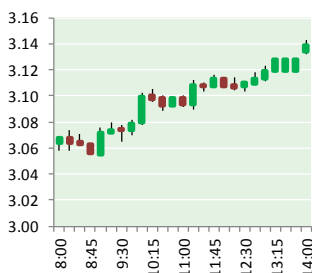


NEWS

NOVEMBER 7, 2017

## Prior Day's NYMEX

### Dec-17 Contract (CT)



## NYMEX NG Futures

Month	Close	Change
Dec-17	3.134	0.150
Jan-18	3.232	0.135
Feb-18	3.231	0.129
Mar-18	3.189	0.121
Apr-18	2.953	0.050
May-18	2.928	0.043
Jun-18	2.955	0.041
Jul-18	2.986	0.039
Aug-18	2.990	0.039
Sep-18	2.973	0.039
Oct-18	2.995	0.038
Nov-18	3.047	0.036
Dec-18	3.182	0.035
Jan-19	3.263	0.035
Feb-19	3.230	0.032
Mar-19	3.155	0.028
Apr-19	2.793	0.006
May-19	2.748	0.003
Jun-19	2.770	0.003
Jul-19	2.793	0.004
Aug-19	2.793	0.004
Sep-19	2.776	0.004
Oct-19	2.799	0.004
Nov-19	2.862	0.004
1YR Strip	3.051	0.072
2017	3.134	0.150
5YR Strip	2.917	0.019

## IN THE NEWS

Russian natural gas industry unfazed by U.S. sanctions — USA Today reported: Russia's energy industry faces a new round of U.S. sanctions — including on oil projects in any location if a designated entity holds more than 33%. And in Europe, where Russia's gas giant Gazprom currently holds a large share of the gas supplies, Poland and Lithuania are buying U.S. liquid natural gas

- Russian natural gas industry unfazed by U.S. sanctions
- Questions may be asked Dec. 5 about regional natural gas pipeline project

(LNG) in an effort to shake off Russian dominance. Despite the sanctions and cold shoulders from Poland and Lithuania, Russia still has plans to boost its LNG capacity and exports, with one of its major LNG export projects focusing on Asia, more specifically China, as its destination. The LNG project has relied on Chinese funding to bring the project to completion. By securing funding from China, Russia is not only finding alternative sources of financing in the face of U.S. sanctions; it's also securing sales volumes in the fastest-growing LNG import market. For more visit [usatoday.com](https://usat.ly/2zl8R9j) or click <https://usat.ly/2zl8R9j>

Questions may be asked Dec. 5 about regional natural gas pipeline project — Meadville Tribune reported: An open house next month will give Ashtabula County, Ohio, residents the chance to ask questions about an \$86 million natural gas pipeline project scheduled for next year. RH energytran of Erie — the company that will build the pipeline — hosts the open house from 5:30 to 7:30 p.m. Dec. 5 at Water's Catering, 3224 E. Center St. (Route 20) in North Kingsville. "Notices are going out to anyone with a vested interest in the project," Dennis Holbrook, a company spokesperson, said Friday. The project would build an estimated 28 miles of new, 12-inch pipe that would be attached to an existing 32 miles of line that begins in Meadville. The new portion would travel about 16 miles in a northwestern direction through Pennsylvania before entering the Conneaut (Ohio) area, where the new pipe would continue for another 12 miles, culminating at a spot in North Kingsville. For more visit [meadvilletribune.com](http://bit.ly/2iAEIrW) or click <http://bit.ly/2iAEIrW>

## 12 MONTH CANDLESTICK (WEEKLY)



## Prompt Natural Gas (NG) Daily Sentiment

BEARISH



RESISTANCE

3.16 & 3.20

SUPPORT

3.07 & 3.01

## Trading Summary

### NATURAL GAS

Futures	Close	Change
NG	3.134	0.150
Volume	380,266	(94,644)
Open Int.	1,390,950	(6,746)

### CRUDE AND GASOLINE

Futures	Close	Change
Crude	57.35	1.71
RBOB	1.8300	0.0366
Crude/NG	18.30	(0.35)

### METALS

Futures	Close	Change
Gold	1,281.60	(1.80)

### EQUITIES

Exchange	Close	Change
DOW	23,548.42	9.23
S&P 500	2,591.13	3.26

### CURRENCY

Currency	Close	Change
EUR/USD	1.1610	0.0002
USD/CND	1.2770	0.0060

## Contact Us



### Mansfield Energy Corp

1025 Airport Pkwy  
Gainesville, GA 30501

[www.mansfield.energy](http://www.mansfield.energy)

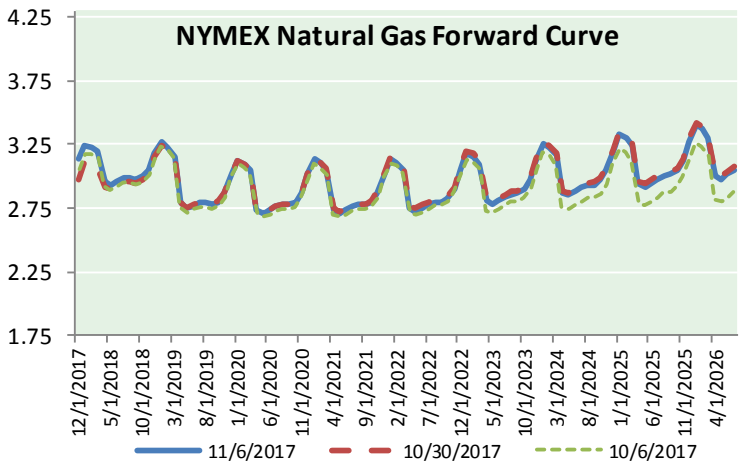
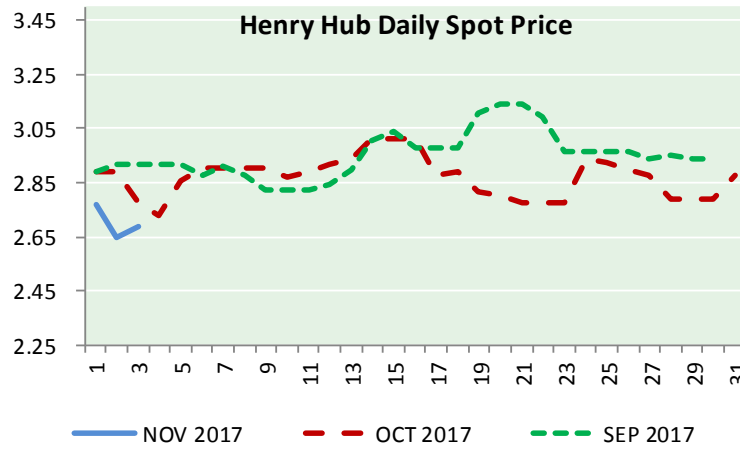
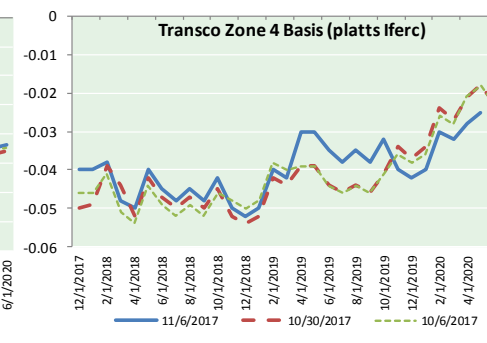
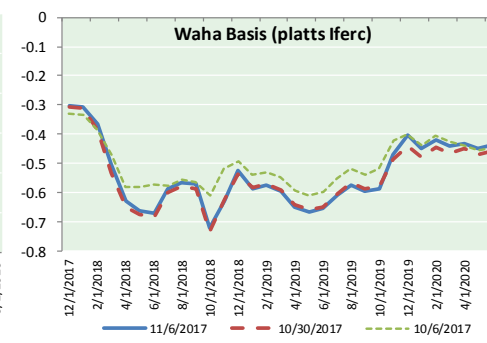
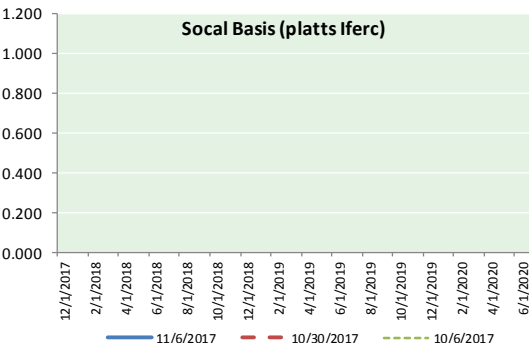
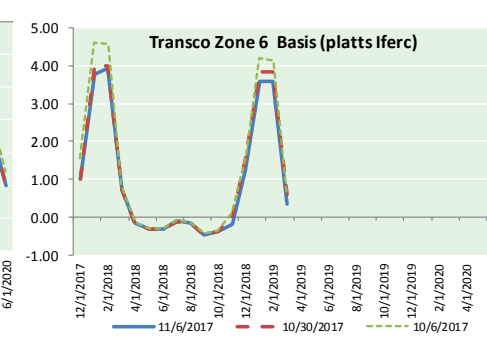
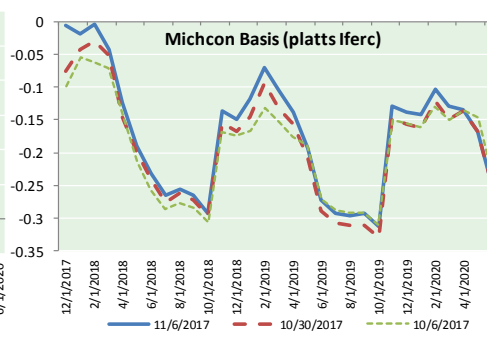
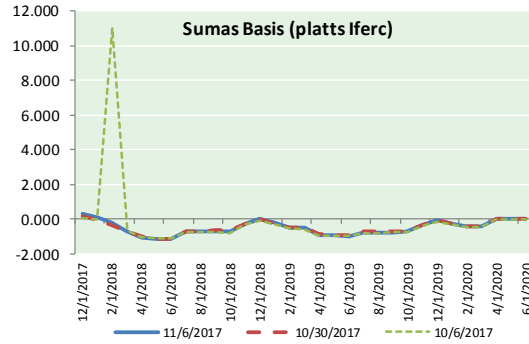
[info@mansfieldoil.com](mailto:info@mansfieldoil.com)

Phone: (800) 695-6626





NATURAL GAS BASIS FUTURES, HENRY HUB SPOT PRICES, AND FORWARD CURVE



CME NG Option Prices

ATM Call

Month	Strike	Close	Imp Vol
Dec-17	3.150	0.112	41.2
Jan-18	3.250	0.211	46.8
Feb-18	3.250	0.273	46.8
Mar-18	3.200	0.320	46.8
Apr-18	2.950	0.231	31.9
May-18			
Jun-18			
Jul-18			
Aug-18			
Sep-18			
Oct-18			
Nov-18			
Dec-18			
Jan-19			
Feb-19			
Mar-19			
Apr-19			

CME NG Option Prices

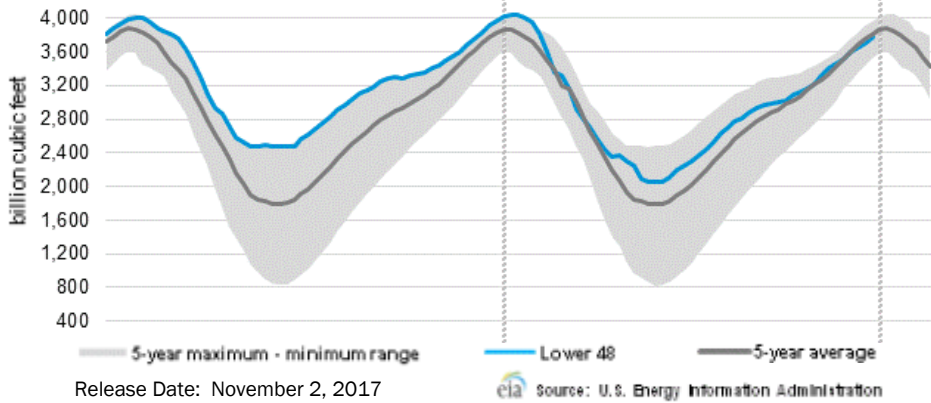
ATM Put

Month	Strike	Close	Imp Vol
Dec-17	3.150	0.122	37.5
Jan-18	3.250	0.227	45.0
Feb-18	3.250	0.286	45.0
Mar-18	3.200	0.333	46.8
Apr-18	2.950	0.228	30.9
May-18			
Jun-18			
Jul-18			
Aug-18			
Sep-18			
Oct-18			
Nov-18			
Dec-18			
Jan-19			
Feb-19			
Mar-19			
Apr-19			



# NATURAL GAS NEWS

## WEEKLY GAS IN UNDERGROUND STORAGE WITH 5-YR RANGE



## Rig Count

Report Date: November 3, 2017

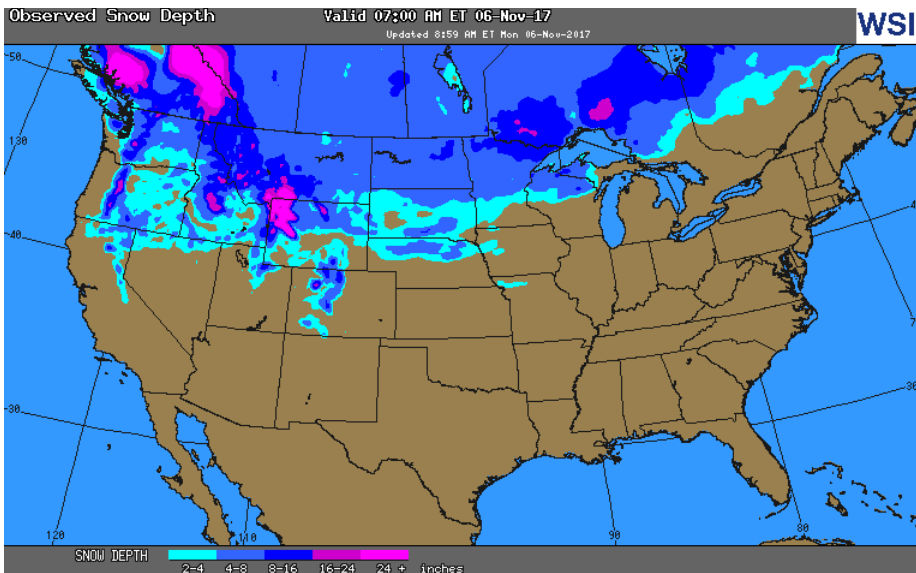
	Total	Change
US -	898	(11)
CN -	192	+1

## EIA Storage History for 44th Week of Year (Due to Report Nov 9)

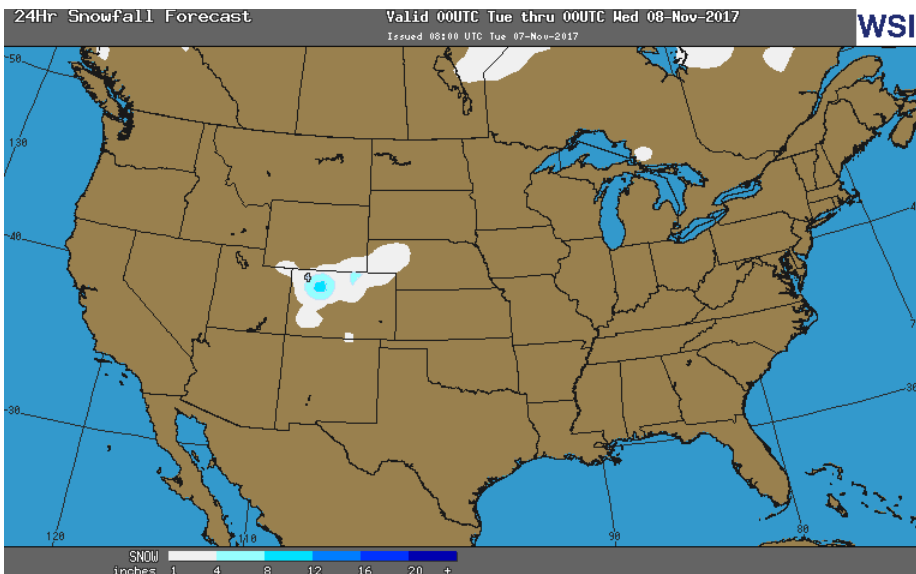
Year	Week Ending	BCF
2013	Nov 01, 2013	+37
2014	Oct 31, 2014	+91
2015	Oct 30, 2015	+56
2016	Oct 28, 2016	+54

ESTIMATE — +TBD

## OBSERVED SNOW DEPTH



## 24 HOUR SNOWFALL FORECAST



## Total Working Gas In Storage

**3,775 BCF**

- +65 BCF (LAST WEEK)
- (180) BCF (LAST YEAR)
- (41) BCF (5-YR AVG)

## U.S. Natural Gas Supply Gas Week 10/26- 11/1

*Average daily values (BCF/D):*

- Last Year (BCF/d)
- Dry Production — +70.8
- Total Supply — +77.2
- Last Week (BCF/d)
- Dry Production — +74.6
- Total Supply — +80.4

[NEXT REPORT ON Nov 9]

## U.S. Natural Gas Demand Gas Week 10/26 - 11/1

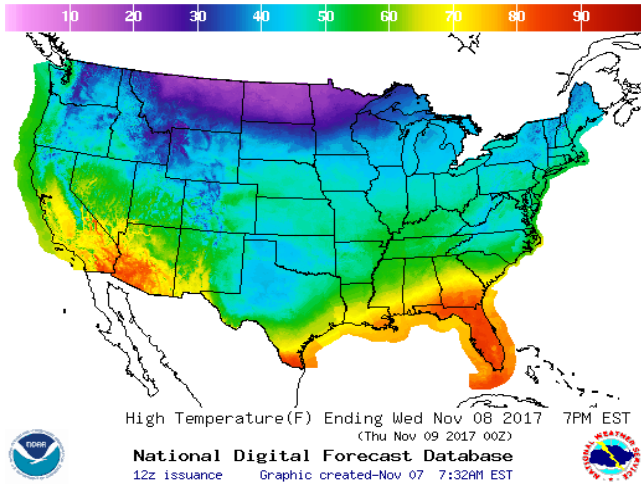
*Average daily values (BCF/D):*

- Last Year (BCF/d)
- Power — +24.0
- Total Demand — +71.8
- Last Week (BCF/d)
- Power — +23.8
- Total Demand — +69.8

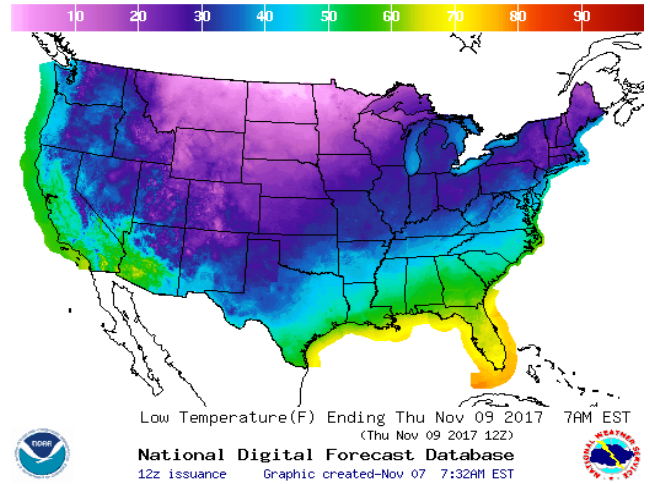
[NEXT REPORT ON Nov 9]

WEATHER – HIGH / LOW TEMPERATURE TOMORROW

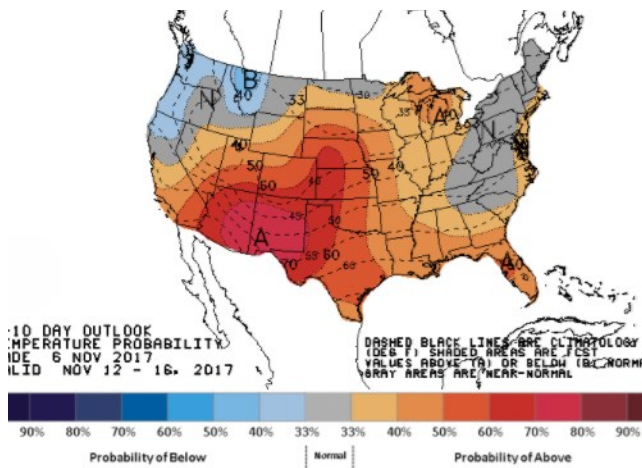
HIGH Temperature



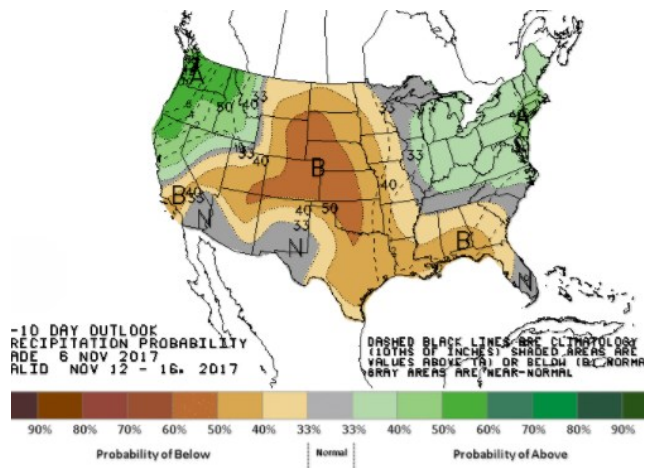
LOW Temperature



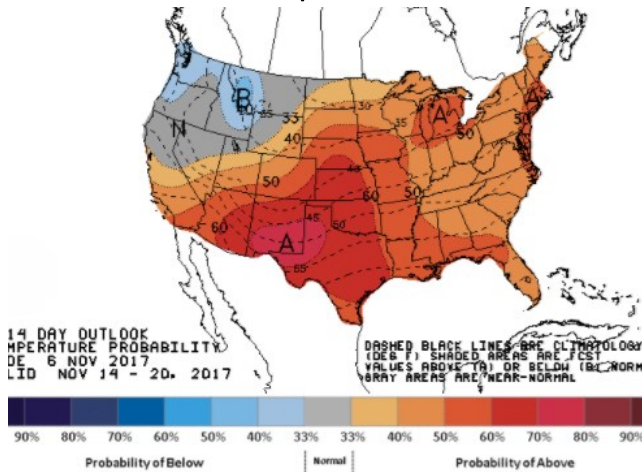
WEATHER – 6 TO 10 DAY OUTLOOK – NOAA  
Temperature



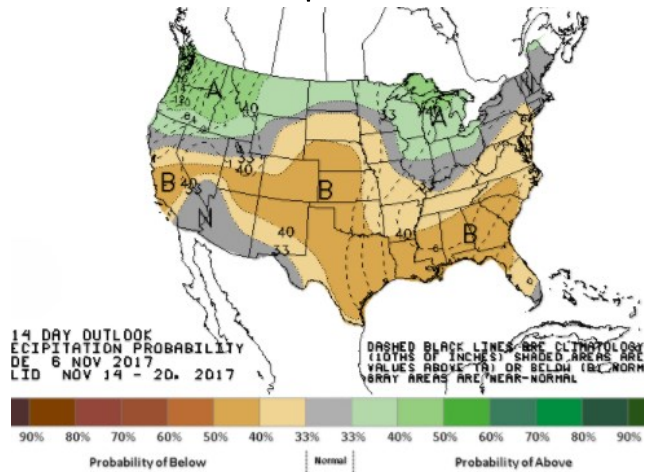
Precipitation



WEATHER – 8 TO 14 DAY OUTLOOK – NOAA  
Temperature



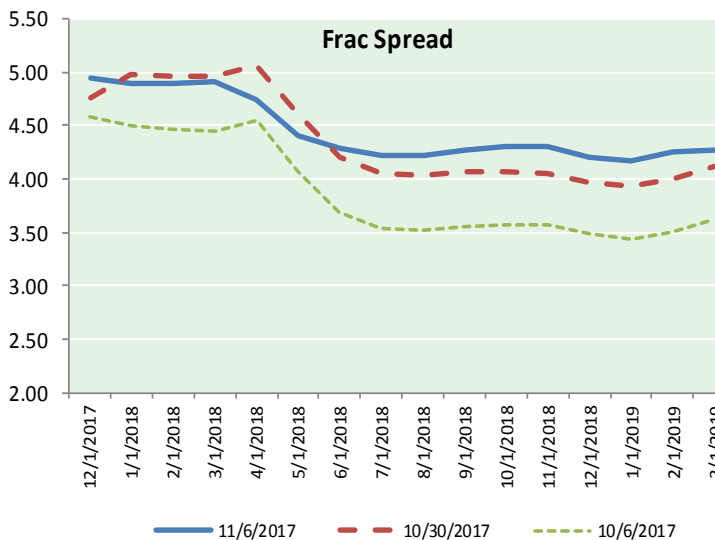
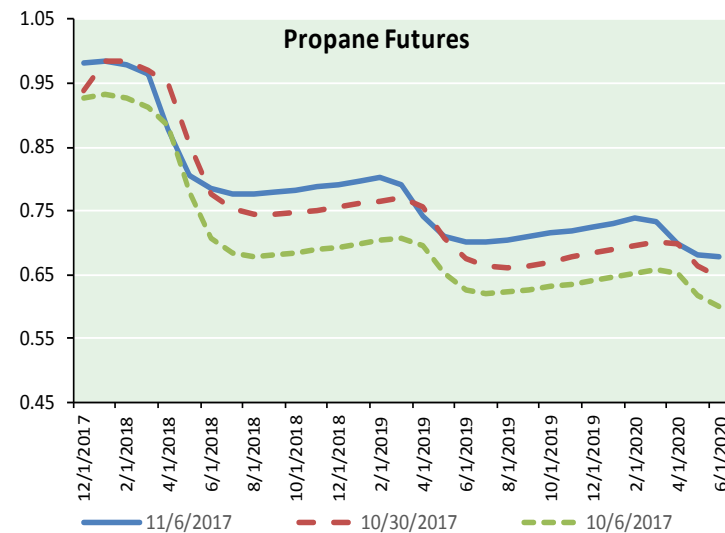
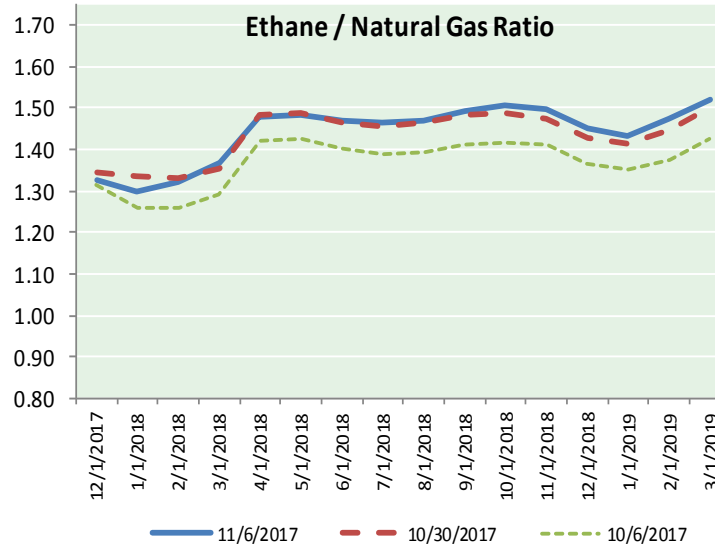
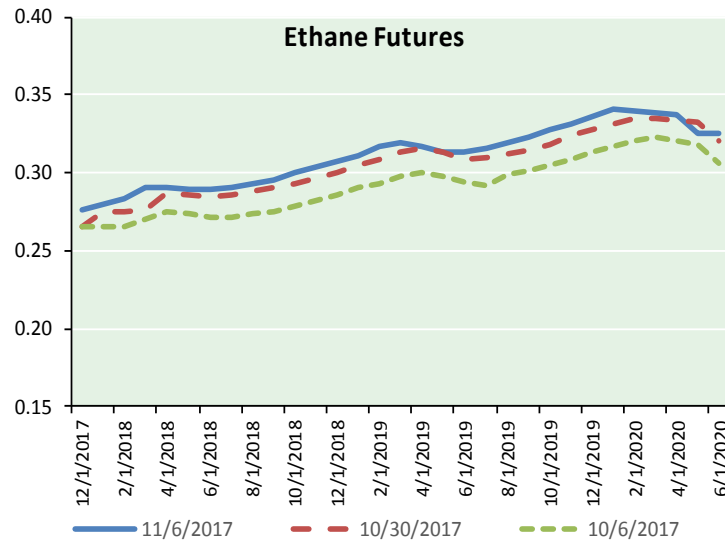
Precipitation





# NATURAL GAS NEWS

## ETHANE FUTURES, NG/ETHANE RATIO, PROPANE FUTURES, AND THE FRAC SPREAD



### CME Future Prices

#### Ethane (C2)

##### Non-LDH— Mont Belvieu

Month	Close	Change
Dec-17	0.276	0.004
Jan-18	0.279	0.005
Feb-18	0.284	0.006
Mar-18	0.290	0.005
Apr-18	0.290	0.005
May-18	0.289	0.005
Jun-18	0.289	0.005
Jul-18	0.290	0.004
Aug-18	0.293	0.004
Sep-18	0.295	0.004
Oct-18	0.300	0.004
Nov-18	0.304	0.004

1YR Strip 0.290 0.005

### CME Future Prices

#### Propane (C3)

##### Non-LDH— Mont Belvieu

Month	Close	Change
Dec-17	0.981	0.007
Jan-18	0.985	0.009
Feb-18	0.980	0.009
Mar-18	0.964	0.009
Apr-18	0.878	0.012
May-18	0.806	0.011
Jun-18	0.786	0.011
Jul-18	0.777	0.012
Aug-18	0.776	0.011
Sep-18	0.779	0.012
Oct-18	0.783	0.011
Nov-18	0.788	0.011

1YR Strip 0.857 0.011

# NATURAL GAS NEWS



## Prompt WTI (CL) Crude

### Daily Sentiment

**BULLISH**



#### RESISTANCE

58.09 & 58.82

#### SUPPORT

56.14 & 54.92

### FOLLOW US ON TWITTER:



@MPG\_NatGasNews

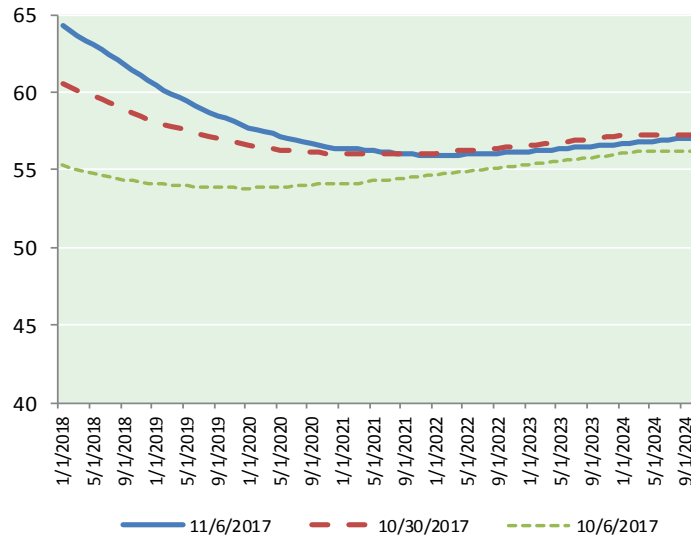
## NYMEX Brent (BZ)

### Futures

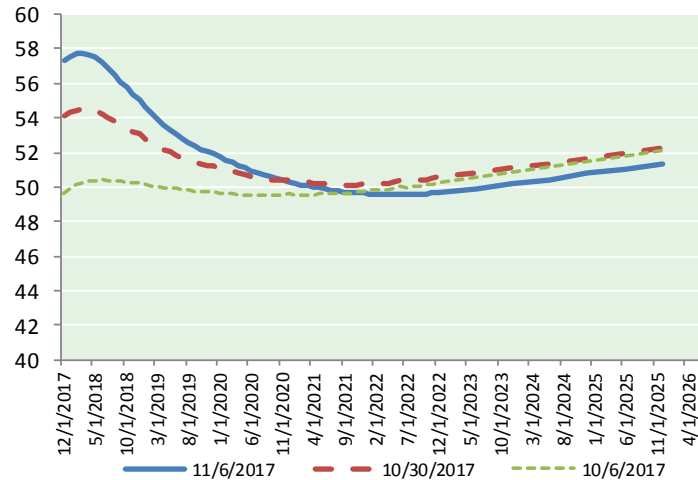
Month	Close	Change
Jan-18	64.27	2.20
Feb-18	63.96	2.16
Mar-18	63.63	2.11
Apr-18	63.35	2.07
May-18	63.09	2.03
Jun-18	62.79	1.98
Jul-18	62.47	1.93
Aug-18	62.13	1.89
Sep-18	61.77	1.85
Oct-18	61.42	1.81
Nov-18	61.06	1.76
Dec-18	60.72	1.73
Jan-19	60.40	1.68
Feb-19	60.13	1.64
Mar-19	59.88	1.59
Apr-19	59.67	1.54
May-19	59.43	1.50
Jun-19	59.15	1.45
Jul-19	58.95	1.40
Aug-19	58.71	1.35
Sep-19	58.51	1.29
Oct-19	58.35	1.24
Nov-19	58.13	1.19
Dec-19	57.89	1.13

1YR Strip	62.56	1.96
2017	#DIV/0!	#DIV/0!
5YR Strip	58.07	1.09

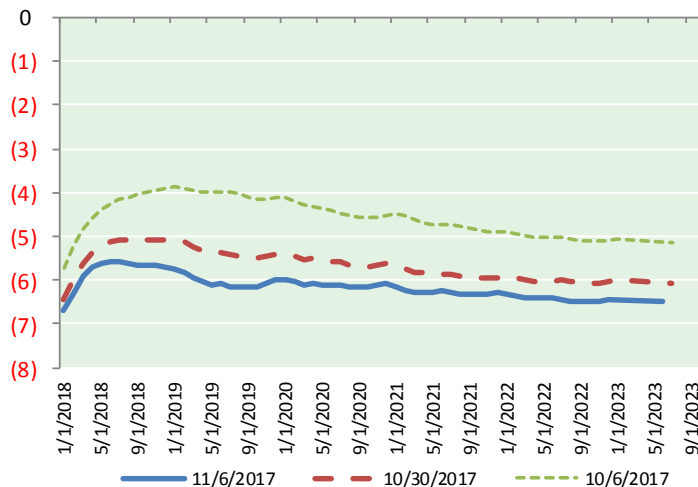
## BRENT CRUDE FORWARD CURVE



## WTI CRUDE FORWARD CURVE



## WTI-BRENT SPREAD



## FRAC Spread

### Specifications

Ethane :	42%	66,500 btu/g
Propane :	28%	90,830 btu/g
Butane :	11%	102,916 btu/g
Iso-Butane :	6%	98,935 btu/g
Natural Gasoline :	13%	115,021 btu/g

## Prompt NGL Futures

### (\$/gallon)

	Dec-17	Close	Change
Butane	1.043	(0.006)	
Iso-Butane	1.040	(0.005)	
Nat Gasoline	1.384	0.024	

## NYMEX WTI (CL) Futures

Month	Close	Change
Dec-17	57.35	1.71
Jan-18	57.57	1.71
Feb-18	57.70	1.72
Mar-18	57.72	1.70
Apr-18	57.65	1.69
May-18	57.48	1.67
Jun-18	57.21	1.63
Jul-18	56.88	1.58
Aug-18	56.51	1.52
Sep-18	56.13	1.46
Oct-18	55.76	1.40
Nov-18	55.39	1.33
Dec-18	55.04	1.27
Jan-19	54.66	1.20
Feb-19	54.29	1.12
Mar-19	53.95	1.05
Apr-19	53.63	0.98
May-19	53.33	0.92
Jun-19	53.08	0.86
Jul-19	52.80	0.80
Aug-19	52.57	0.75
Sep-19	52.37	0.70
Oct-19	52.20	0.64
Nov-19	52.05	0.59

1YR Strip	56.95	1.59
2017	57.35	1.71
5YR Strip	52.09	0.56