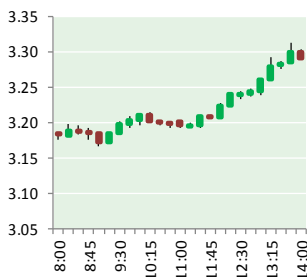


# NATURAL GAS



NOVEMBER 5, 2018

## Prior Day's NYMEX Dec-18 Contract (CT)



## NYMEX NG Futures

Month	Close	Change
Dec-18	3.284	0.047
Jan-19	3.310	0.035
Feb-19	3.192	0.019
Mar-19	2.938	(0.001)
Apr-19	2.673	0.001
May-19	2.645	0.002
Jun-19	2.676	0.002
Jul-19	2.714	0.002
Aug-19	2.720	0.003
Sep-19	2.703	0.004
Oct-19	2.721	0.004
Nov-19	2.778	0.004
Dec-19	2.919	0.005
Jan-20	3.018	0.006
Feb-20	2.949	0.006
Mar-20	2.798	0.008
Apr-20	2.546	0.003
May-20	2.511	0.003
Jun-20	2.540	0.001
Jul-20	2.573	(0.001)
Aug-20	2.579	(0.001)
Sep-20	2.564	(0.001)
Oct-20	2.581	(0.001)
Nov-20	2.639	0.002
1YR Strip	2.863	0.010
2018	3.284	0.047
5YR Strip	2.684	0.009

## IN THE NEWS

Gas Explosion Levels Empty Mansion Under Renovation- ABC News reported: An apparent gas explosion leveled an empty mansion in an affluent suburb of Philadelphia on Sunday, reducing the 9,000-sq. foot (836-sq. meter) home to rubble and frightening neighbors and others who felt the thunderous boom. The explosion at the Gladwyne mansion happened

- **Gas Explosion Levels Empty Mansion Under Renovation**
- **China's Sinopec, CNPC speed up oil, gas drilling to boost output**

just after 8 p.m., and was felt as far away as southern New Jersey. The house was undergoing extensive renovations, authorities said, and no one was inside the home at the time of the explosion. It was reduced to a few walls and rubble, as various debris ended up strewn among nearby trees. The family was staying in a second residence when the mansion exploded. Their names have not been released. A spokeswoman for PECO Energy Company said no injuries were reported. The cause of the explosion remained under investigation Monday. For more on this story visit [abcnews.go.com](http://abcnews.go.com) or click <https://abcn.ws/2zvfvjZp>

China's Sinopec, CNPC speed up oil, gas drilling to boost output— Reuters reported: China's Sinopec and CNPC [CNPET.UL] are speeding up drilling and exploration from major tight and shale oil and gas formations in the country's western regions to boost domestic output, according to company reports on Monday. New exploration in shale gas, tight oil and tight gas will lead to growth in production for the country's largest oil and gas producer, China National Petroleum Corporation (CNPC), the firm's official newspaper reported on Monday, citing an internal conference from its upstream services unit. The drilling cycle at the Mahu field in Xinjiang, one of CNPC's largest findings in recent years, fell 40 percent from a year ago, CNPC said, implying that oil wells are being completed and produced at a faster rate. Despite having large domestic oil and gas reserves, China has become the world's biggest importer of crude oil, and this year it is also expected to overtake Japan as the top buyer of liquefied natural gas (LNG). LNG shipments cost China around \$25 billion in October alone, according to Reuters calculations. For more on this story visit [reuters.com](http://reuters.com) or click <https://reut.rs/2OqJPC5>

## 12 MONTH CANDLESTICK (WEEKLY)



## Prompt Natural Gas (NG) Daily Sentiment

**BULLISH**



RESISTANCE

3.34 & 3.40

SUPPORT

3.20 & 3.11

## Trading Summary

### NATURAL GAS

Futures	Close	Change
NG	3.284	0.047
Volume	475,979	(232,877)
Open Int.	1,515,541	(3,977)

### CRUDE AND GASOLINE

Futures	Close	Change
Crude	63.14	(0.55)
RBOB	1.7083	(0.0082)
Crude/NG	19.23	(0.45)

### METALS

Futures	Close	Change
Gold	1,230.90	(2.40)

### EQUITIES

Exchange	Close	Change
DOW	25,293.13	22.30
S&P 500	-1,360.37	5.86

### CURRENCY

Currency	Close	Change
EUR/USD	1.1389	0.0001
USD/CND	1.2405	(0.0047)

## Contact Us



**Mansfield Energy Corp**  
1025 Airport Pkwy  
Gainesville, GA 30501  
  
[www.mansfield.energy](http://www.mansfield.energy)  
  
[info@mansfieldoil.com](mailto:info@mansfieldoil.com)

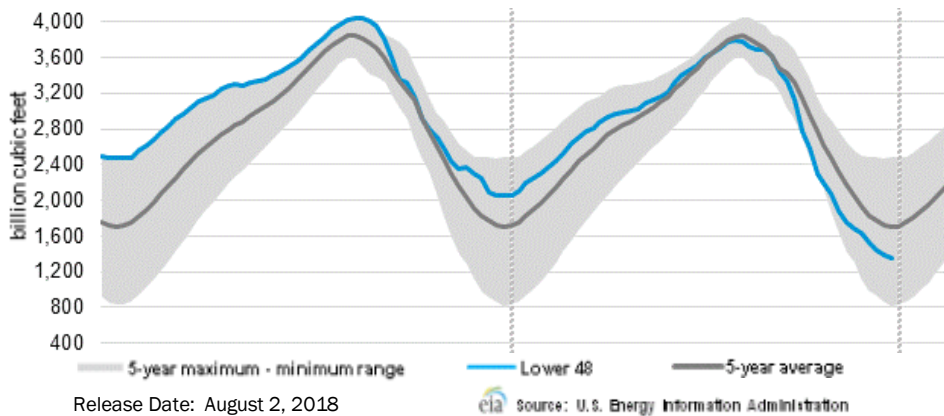
Phone: (800) 695-6626



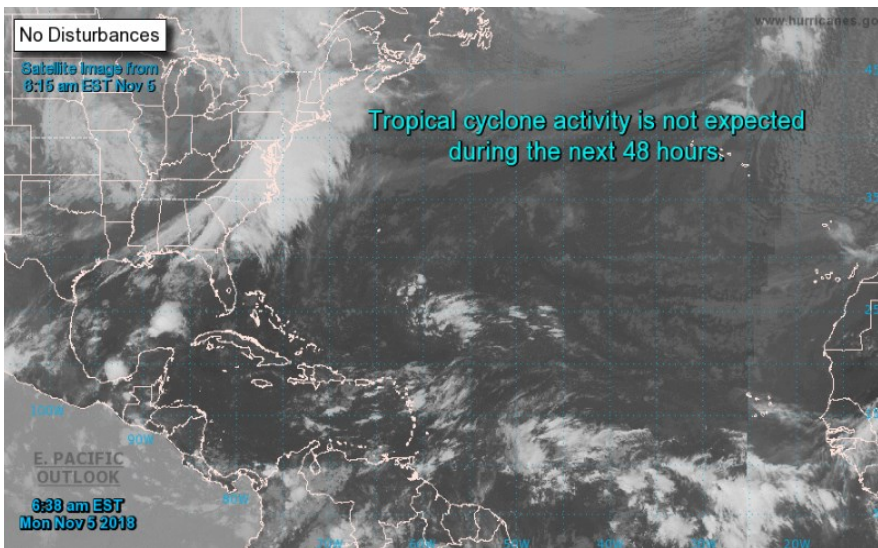


**NATURAL GAS NEWS**

**WEEKLY GAS IN UNDERGROUND STORAGE WITH 5-YR RANGE**



**TROPICAL STORM ACTIVITY— ATLANTIC**



Tropical Weather Outlook

NWS National Hurricane Center Miami FL

700 AM EST Mon Nov 5 2018

For the North Atlantic...Caribbean Sea and the Gulf of Mexico:

Tropical cyclone formation is not expected during the next 5 days.

**Rig Count**

Report Date: November 2, 2018

	Total	Change
US -	1,067	(1)
CN -	198	(2)

**EIA Weekly NG Storage Actual and Surveys for November 2, 2018**

Released November 1, 2018

Range — +34 to +64

PIRA— +57

CITI — +42

Raymond James — +50

**EIA ACTUAL — +48**

**Total Working Gas In Storage**

**3,143 BCF**

+48 BCF (LAST WEEK)

(623) BCF (LAST YEAR)

(638) BCF (5-YR AVG)

**U.S. Natural Gas Supply Gas Week 10/25 — 10/31**

**Average daily values (BCF/D):**

Last Year (BCF/d)

Dry Production — +77.9

Total Supply — +83.5

Last Week (BCF/d)

Dry Production — +86.6

Total Supply — +91.1

[NEXT REPORT ON Nov 9]

**U.S. Natural Gas Demand Gas Week 10/25 — 10/31**

**Average daily values (BCF/D):**

Last Year (BCF/d)

Power — +22.5

Total Demand — +80.6

Last Week (BCF/d)

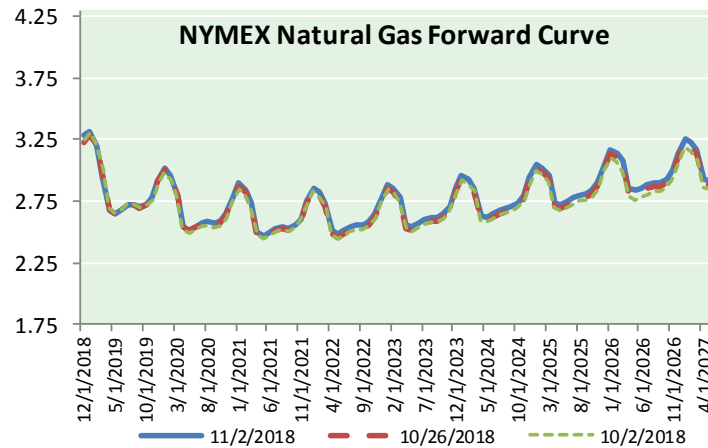
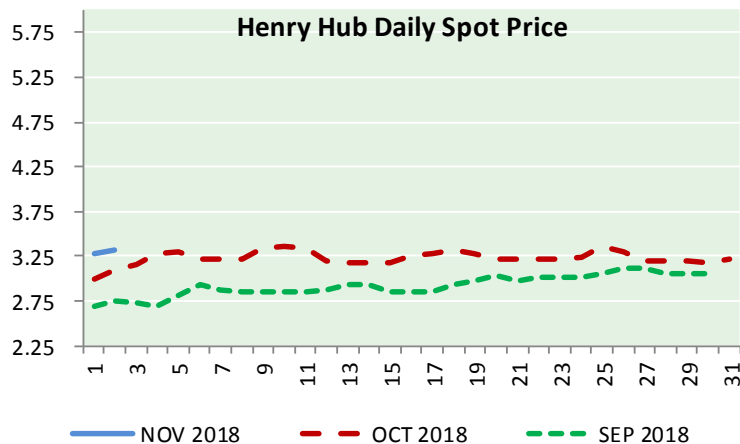
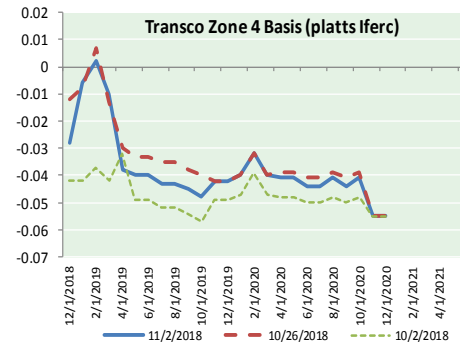
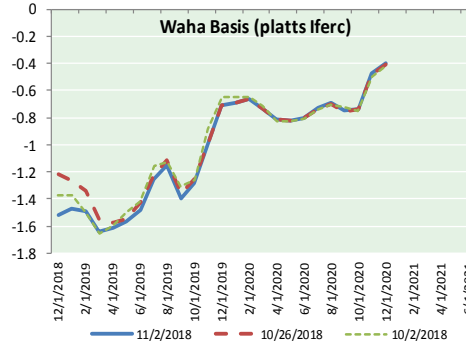
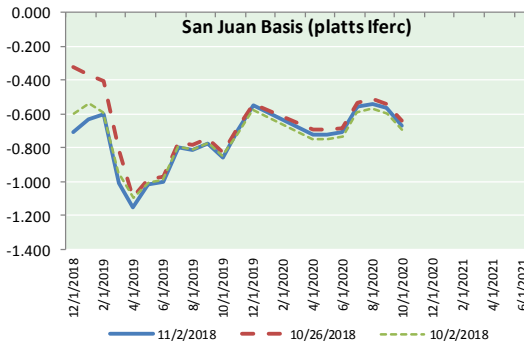
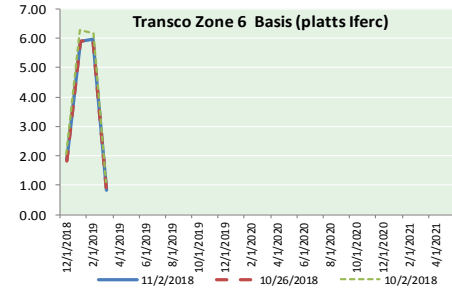
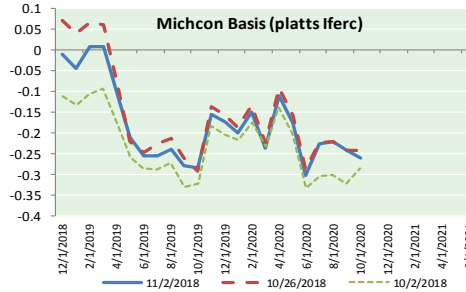
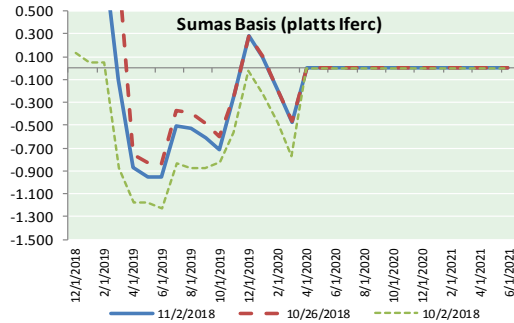
Power — +23.9

Total Demand — +84.6

[NEXT REPORT ON Nov 9]



NATURAL GAS BASIS FUTURES, HENRY HUB SPOT PRICES, AND FORWARD CURVE



NYMEX WTI Delivery

Month Average (\$/bbl)

(Excluding Weekends and Holidays)

Month: November 2018

Day	Price	Day	Price
1	63.69	16	
2	63.14	17	
3		18	
4		19	
5		20	
6		21	
7		22	
8		23	
9		24	
10		25	
11		26	
12		27	
13		28	
14		29	
15		30	

Average (Nov) 63.4150  
(through 11/02/2018)

Average (Oct) 70.7578

Average (Sep) 70.0847

CME NG Option Prices

ATM Call

Month	Strike	Close	Imp Vol
Jan-19			
Feb-19	3.550	0.145	28.1
Mar-19			
Apr-19			
May-19			

CME NG Option Prices

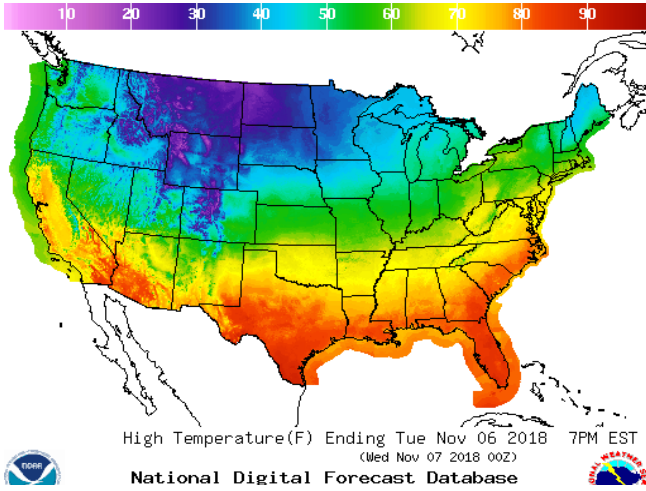
ATM Put

Jan-19			
Feb-19	3.550		
Mar-19			
Apr-19			
May-19			

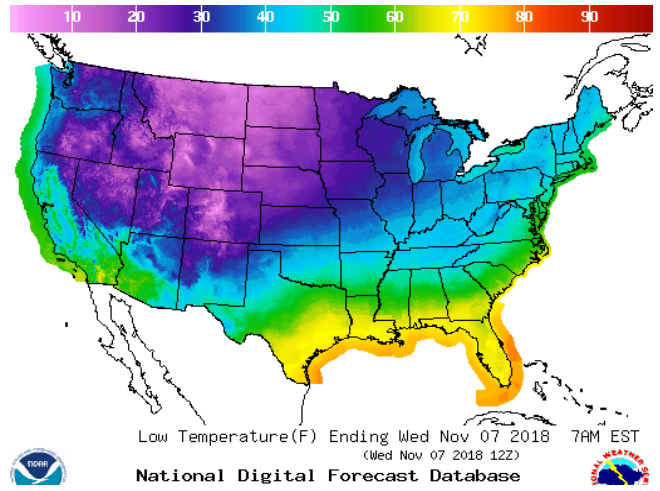


WEATHER – HIGH / LOW TEMPERATURE TOMORROW

HIGH Temperature

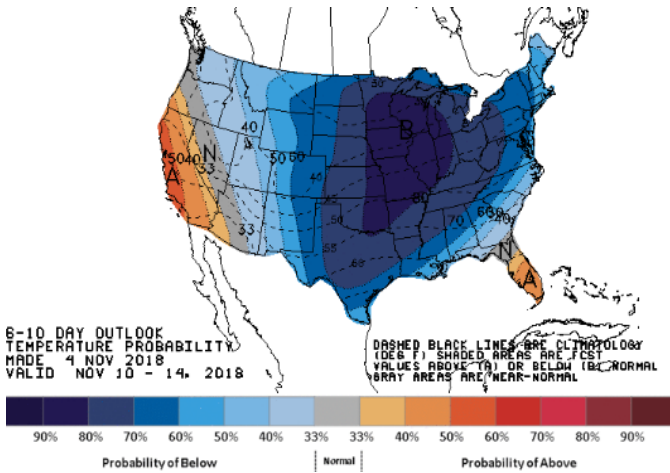


LOW Temperature

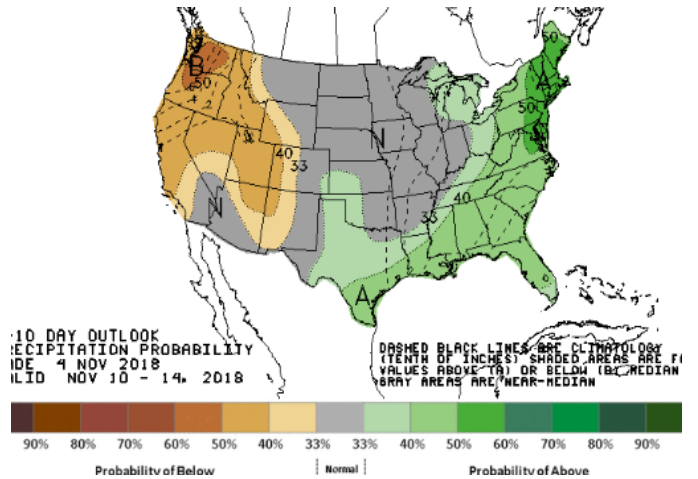


WEATHER – 6 TO 10 DAY OUTLOOK – NOAA

Temperature

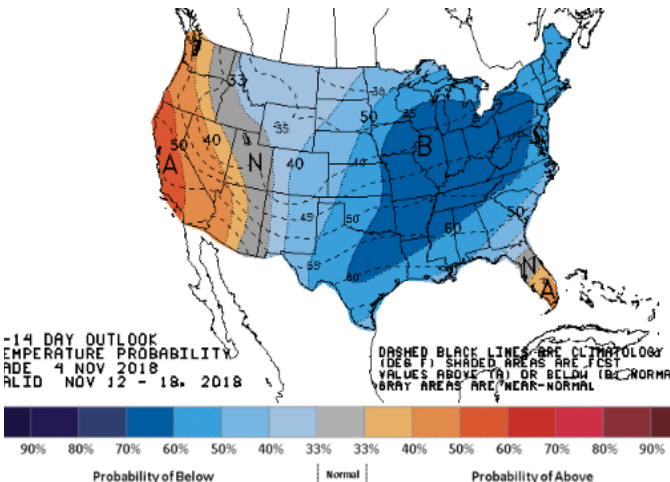


Precipitation

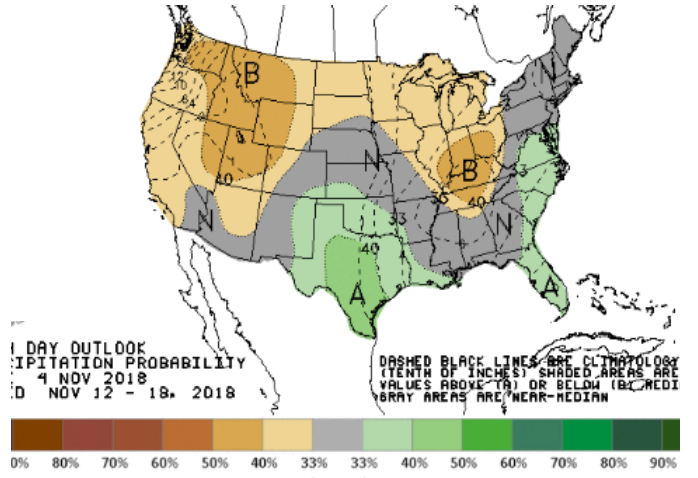


WEATHER – 8 TO 14 DAY OUTLOOK – NOAA

Temperature



Precipitation

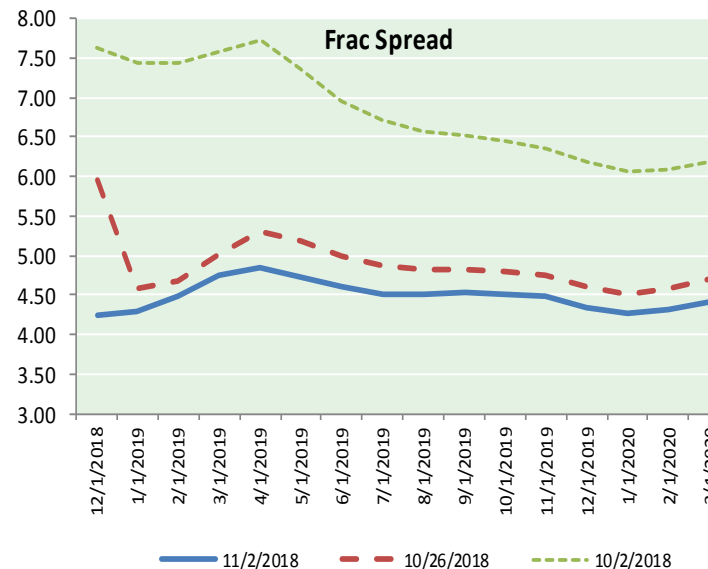
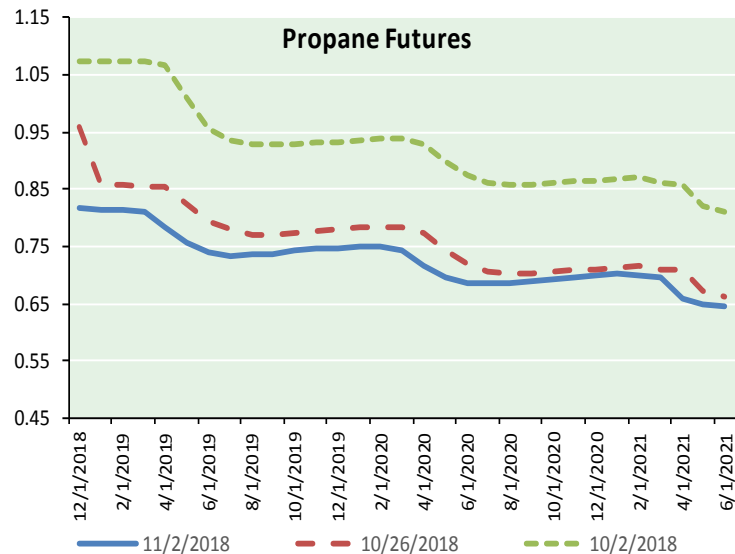
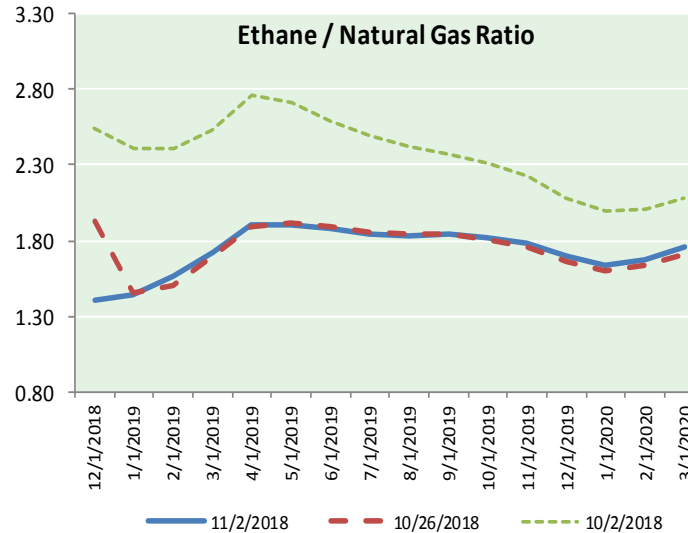
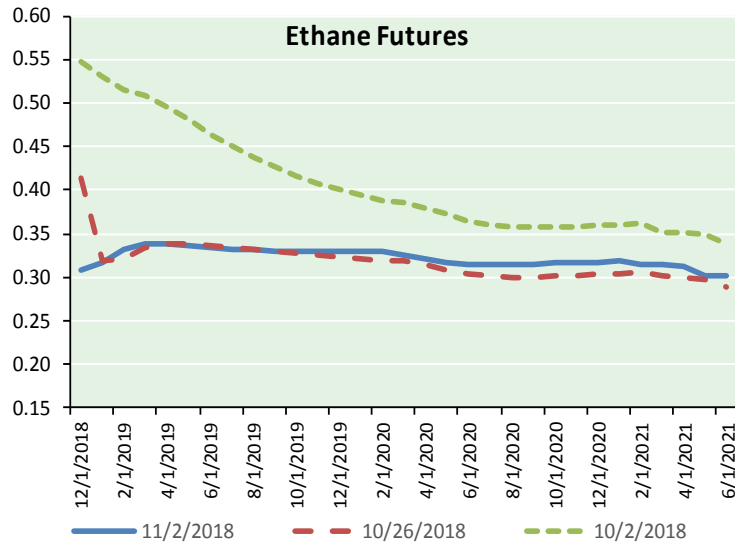


**NATURAL GAS NEWS**



**ETHANE FUTURES, NG/ETHANE RATIO, PROPANE FUTURES, AND THE FRAC SPREAD**

**CME Future Prices**



Month	Close	Change
Dec-18	0.307	(0.011)
Jan-19	0.316	(0.011)
Feb-19	0.331	(0.011)
Mar-19	0.338	(0.008)
Apr-19	0.338	(0.007)
May-19	0.336	(0.006)
Jun-19	0.334	(0.006)
Jul-19	0.333	(0.005)
Aug-19	0.332	(0.004)
Sep-19	0.331	(0.004)
Oct-19	0.329	(0.004)
Nov-19	0.330	(0.002)
1YR Strip	0.329	(0.006)

**CME Future Prices  
Propane (C3)  
Non-LDH— Mont Belvieu**

Month	Close	Change
Dec-18	0.817	(0.008)
Jan-19	0.816	(0.008)
Feb-19	0.816	(0.006)
Mar-19	0.812	(0.006)
Apr-19	0.783	(0.006)
May-19	0.756	(0.004)
Jun-19	0.741	(0.004)
Jul-19	0.734	(0.004)
Aug-19	0.736	(0.003)
Sep-19	0.738	(0.003)
Oct-19	0.742	(0.003)
Nov-19	0.745	(0.003)
1YR Strip	0.770	(0.005)

**NATURAL GAS NEWS**



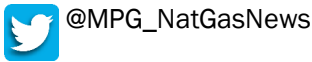
**Prompt WTI (CL) Crude  
Daily Sentiment**

**BEARISH**



RESISTANCE  
63.85 & 64.56  
SUPPORT  
62.53 & 61.92

**FOLLOW US ON TWITTER:**

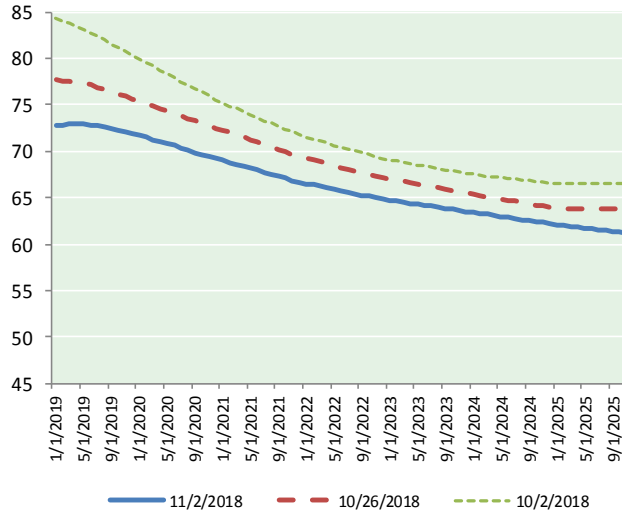


**NYMEX Brent (BZ)**

**Futures**

Month	Close	Change
Dec-18	63.14	(0.55)
Jan-19	63.28	(0.53)
Feb-19	63.41	(0.51)
Mar-19	63.56	(0.50)
Apr-19	63.71	(0.49)
May-19	63.84	(0.48)
Jun-19	63.94	(0.45)
Jul-19	63.98	(0.43)
Aug-19	63.98	(0.39)
Sep-19	63.92	(0.36)
Oct-19	63.83	(0.33)
Nov-19	63.72	(0.31)
Dec-19	63.58	(0.29)
Jan-20	63.37	(0.28)
Feb-20	63.17	(0.26)
Mar-20	62.98	(0.24)
Apr-20	62.79	(0.23)
May-20	62.61	(0.22)
Jun-20	62.43	(0.21)
Jul-20	62.20	(0.20)
Aug-20	61.98	(0.19)
Sep-20	61.79	(0.17)
Oct-20	61.61	(0.16)
Nov-20	61.45	(0.14)
1YR Strip 2018	63.69	(0.44)
5YR Strip	60.05	(0.05)

**BRENT CRUDE FORWARD CURVE**



**FRAC Spread**

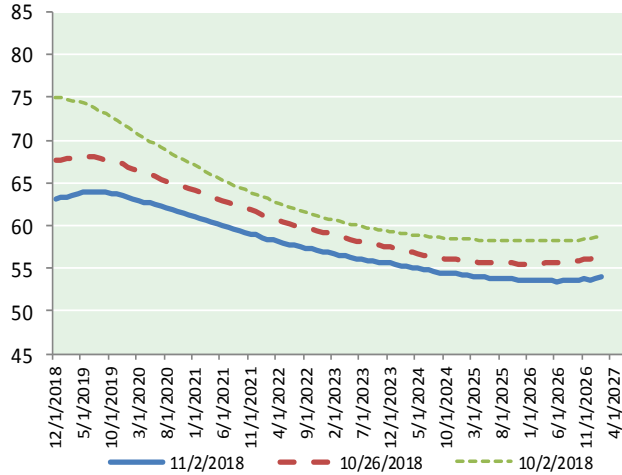
**Specifications**

Ethane :	42%	66,500 btu/g
Propane:	28%	90,830 btu/g
Butane: 11%	102,916 btu/g	
Iso-Butane: 6%	98,935 btu/g	
Natural Gasoline: 13%	115,021 btu/g	

**Prompt NGL Futures**

	Dec-18	Close	Change
Butane	0.958	0.009	
Iso-Butane	0.983	0.010	
Nat Gasoline	1.280	(0.020)	

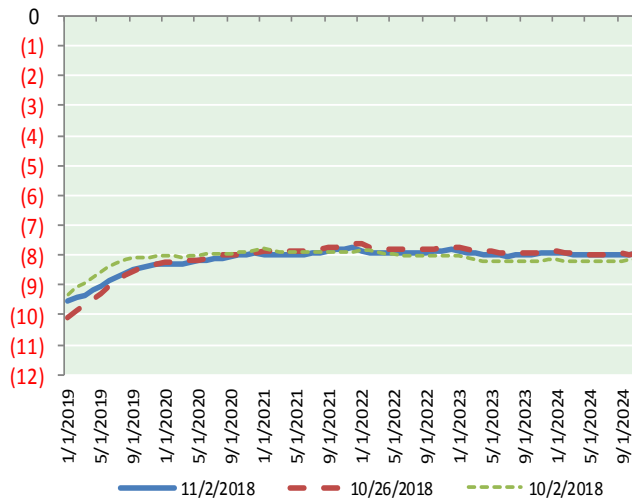
**WTI CRUDE FORWARD CURVE**



**NYMEX WTI (CL) Futures**

Month	Close	Change
Jan-19	72.83	(0.06)
Feb-19	72.83	(0.13)
Mar-19	72.89	(0.15)
Apr-19	72.90	(0.16)
May-19	72.89	(0.15)
Jun-19	72.81	(0.15)
Jul-19	72.70	(0.14)
Aug-19	72.56	(0.12)
Sep-19	72.41	(0.11)
Oct-19	72.24	(0.10)
Nov-19	72.08	(0.09)
Dec-19	71.87	(0.09)
Jan-20	71.67	(0.09)
Feb-20	71.46	(0.08)
Mar-20	71.25	(0.07)
Apr-20	71.03	(0.06)
May-20	70.81	(0.05)
Jun-20	70.58	(0.04)
Jul-20	70.32	(0.04)
Aug-20	70.08	(0.02)
Sep-20	69.85	(0.01)
Oct-20	69.63	0.01
Nov-20	69.44	0.03
Dec-20	69.23	0.04

**WTI-BRENT SPREAD**



1YR Strip	72.58	(0.12)
2018	#DIV/0!	#DIV/0!
5YR Strip	68.05	0.17