

# NATURAL GAS

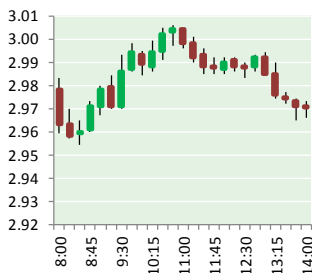


NEWS

NOVEMBER 2, 2017

## Prior Day's NYMEX

### Dec-17 Contract (CT)



## NYMEX NG Futures

Month	Close	Change
Dec-17	2.893	(0.003)
Jan-18	3.017	(0.009)
Feb-18	3.024	(0.006)
Mar-18	2.992	(0.008)
Apr-18	2.853	(0.009)
May-18	2.841	(0.010)
Jun-18	2.872	(0.012)
Jul-18	2.905	(0.013)
Aug-18	2.910	(0.013)
Sep-18	2.893	(0.013)
Oct-18	2.917	(0.013)
Nov-18	2.975	(0.013)
Dec-18	3.113	(0.014)
Jan-19	3.197	(0.014)
Feb-19	3.170	(0.013)
Mar-19	3.104	(0.010)
Apr-19	2.779	(0.005)
May-19	2.739	(0.005)
Jun-19	2.761	(0.005)
Jul-19	2.783	(0.005)
Aug-19	2.782	(0.005)
Sep-19	2.765	(0.005)
Oct-19	2.789	(0.005)
Nov-19	2.855	(0.004)
1YR Strip	2.924	(0.010)
2017	2.893	(0.003)
5YR Strip	2.896	(0.002)

## IN THE NEWS

Court rejects greens' plea to stop natural gas export projects — The Hill reported: A federal appeals court Wednesday rejected an environmental group's lawsuits trying to overturn federal approval for three liquefied natural gas (LNG) export projects. The Court of Appeals for the District of Columbia said that the Sierra Club's challenges to export facilities in Maryland, Louisiana and Texas,

- Court rejects greens' plea to stop natural gas export projects
- ONGC to double gas output by FY'22

fail for the same reasons that the same court ruled against the group in a similar case concerning a different project in August. "In a very recent case, Sierra Club v. U.S. Department of Energy (Freeport), this court denied a petition by Sierra Club challenging, under the same two statutes, the Department [of Energy]'s approval of an LNG export application from a fourth facility. The court's decision in Freeport largely governs the resolution of the instant cases," the court's three judges wrote in the brief judgment. The projects at issue in Wednesday's cases were Dominion Energy's Cove Point facility in Maryland, scheduled to open within weeks; Cheniere Energy Inc.'s Sabine Pass facility in Louisiana, which opened last year; and Cheniere's Corpus Christi, Texas, project, due to open next year. For more visit thehill.com or click <http://bit.ly/2zsJ27u>

ONGC to double gas output by FY'22 – Economic Times reported: ONGCBSE -1.52 % plans to nearly double natural gas production in four years as it invests billions of dollars to produce from newer discoveries, the state-owned firm's chairman Shashi Shanker said. India's biggest oil and gas producer is investing Rs 92,000 crore in 35 major projects which include 14 to bring new finds to production and six to improve recovery from the ageing fields. "We have almost 70 per cent of oil production coming from mature fields. My primary challenge is to step up production," said Shanker, who took over as the Chairman of Oil & Natural Gas Corp (ONGC) last month. Plans on table would help raise crude oil production from 22.25 million tonnes in 2016-17 to 27 MT by 2021-22, he said. For more visit [economictimes.indiatimes.com](http://bit.ly/2A0vNHw) or click <http://bit.ly/2A0vNHw>

## 12 MONTH CANDLESTICK (WEEKLY)



## Prompt Natural Gas (NG) Daily Sentiment

BEARISH



RESISTANCE  
2.93 & 2.97  
SUPPORT  
2.85 & 2.80

## Trading Summary

### NATURAL GAS

Futures	Close	Change
NG	2.893	(0.003)
Volume	265,376	205,831
Open Int.	1,369,575	(2,953)

### CRUDE AND GASOLINE

Futures	Close	Change
Crude	54.30	(0.08)
RBOB	1.7410	0.0085
Crude/NG	18.77	(0.01)

### METALS

Futures	Close	Change
Gold	1,277.30	(1.20)

### EQUITIES

Exchange	Close	Change
DOW	23,348.74	(85.45)
S&P 500	2,579.36	4.10

### CURRENCY

Currency	Close	Change
EUR/USD	1.1619	(0.0027)
USD/CND	1.2845	(0.0016)

## Contact Us



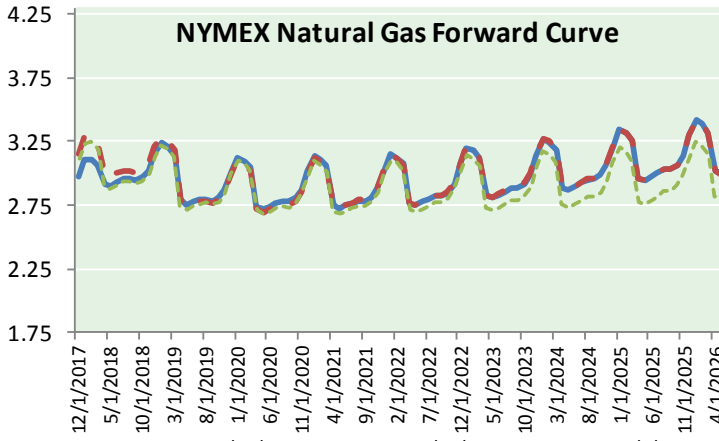
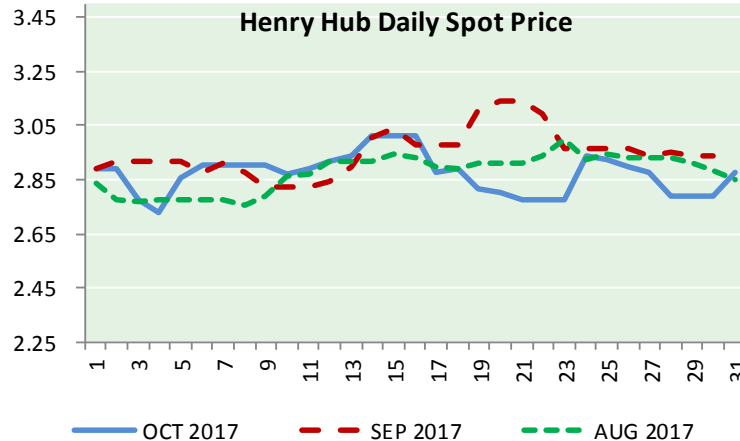
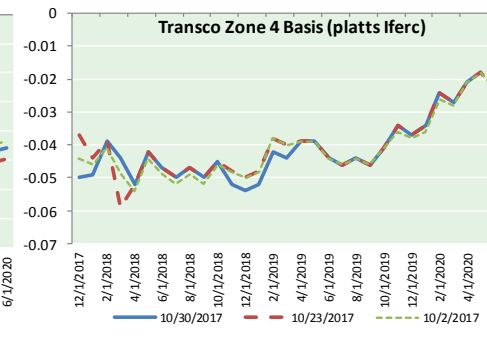
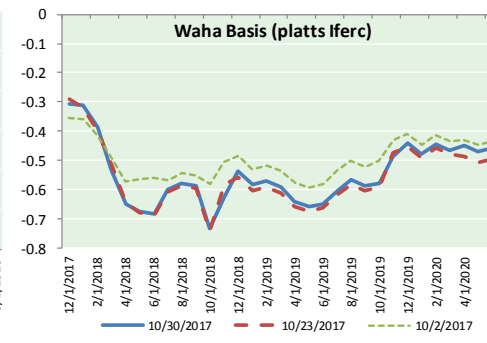
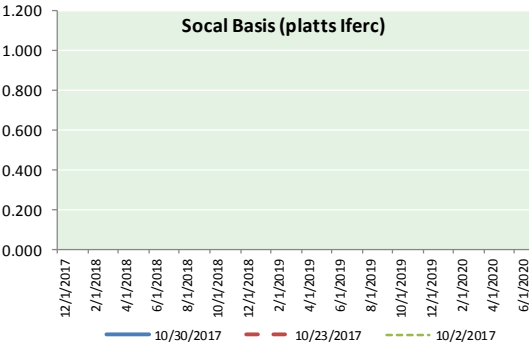
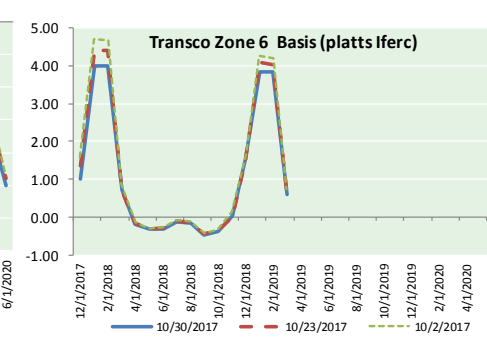
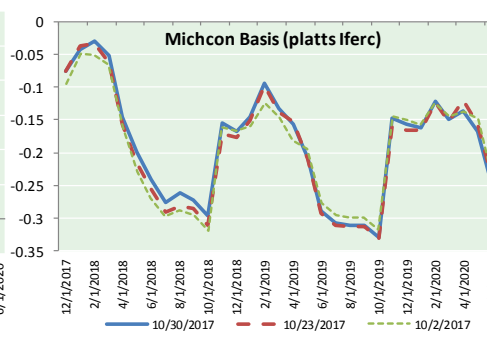
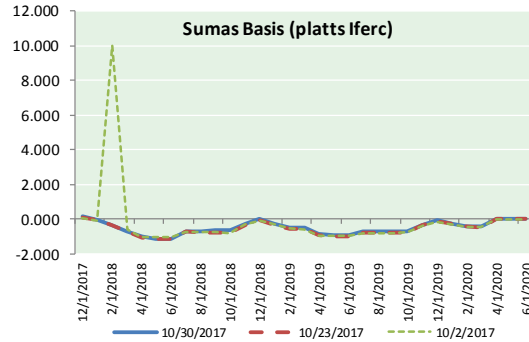
**Mansfield Energy Corp**  
1025 Airport Pkwy  
Gainesville, GA 30501  
  
www.mansfield.energy  
info@mansfieldoil.com

Phone: (800) 695-6626





NATURAL GAS BASIS FUTURES, HENRY HUB SPOT PRICES, AND FORWARD CURVE



CME NG Option Prices

ATM Call

Month	Strike	Close	Imp Vol
Dec-17	2.950	0.106	37.5
Jan-18	3.050	0.178	37.5
Feb-18		0.000	0.1
Mar-18	3.000	0.278	39.4
Apr-18	2.850	0.215	28.1
May-18			
Jun-18			
Jul-18			
Aug-18			
Sep-18			
Oct-18			
Nov-18			
Dec-18			
Jan-19			
Feb-19			
Mar-19			
Apr-19			

CME NG Option Prices

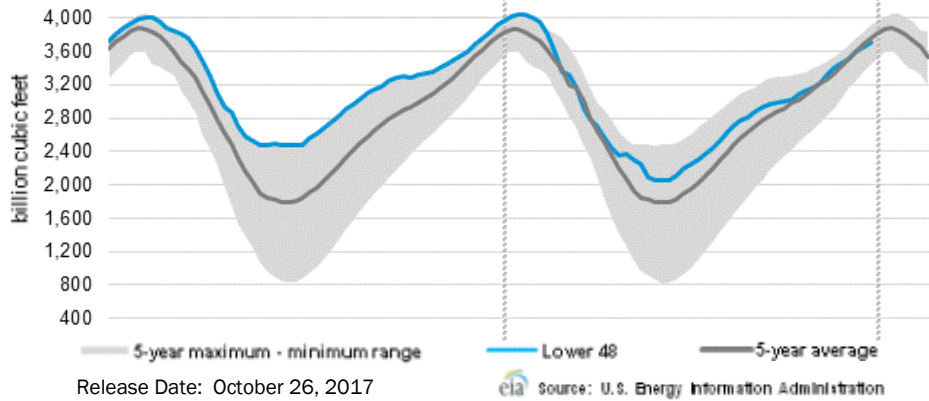
ATM Put

Month	Strike	Close	Imp Vol
Dec-17	2.950	0.150	45.0
Jan-18	3.050	0.211	45.0
Feb-18			
Mar-18	3.000	0.290	45.0
Apr-18	2.850		
May-18			
Jun-18			
Jul-18			
Aug-18			
Sep-18			
Oct-18			
Nov-18			
Dec-18			
Jan-19			
Feb-19			
Mar-19			
Apr-19			



**NATURAL GAS NEWS**

**WEEKLY GAS IN UNDERGROUND STORAGE WITH 5-YR RANGE**



**Rig Count**

Report Date: **October 27, 2017**

	Total	Change
US -	909	(4)
CN -	191	(11)

**EIA Storage Forecast and Surveys for Release Date**

**November 2, 2017**

Range — +45 to +71

PIRA— +65

ARM — +58

Reuters — +62

**EIA ACTUAL Due Out Today at 10:30am EPT/9:30am CPT**

**Total Working Gas In Storage**

**3,710 BCF**

+64 BCF (LAST WEEK)

(189) BCF (LAST YEAR)

(48) BCF (5-YR AVG)

**U.S. Natural Gas Supply Gas Week 10/19– 10/25**

**Average daily values (BCF/D):**

Last Year (BCF/d)

Dry Production — +70.5

Total Supply — +76.8

Last Week (BCF/d)

Dry Production — +73.7

Total Supply — +79.4

[NEXT REPORT ON Nov 2]

**U.S. Natural Gas Demand Gas Week 10/12 - 10/19**

**Average daily values (BCF/D):**

Last Year (BCF/d)

Power — +24.5

Total Demand — +67.6

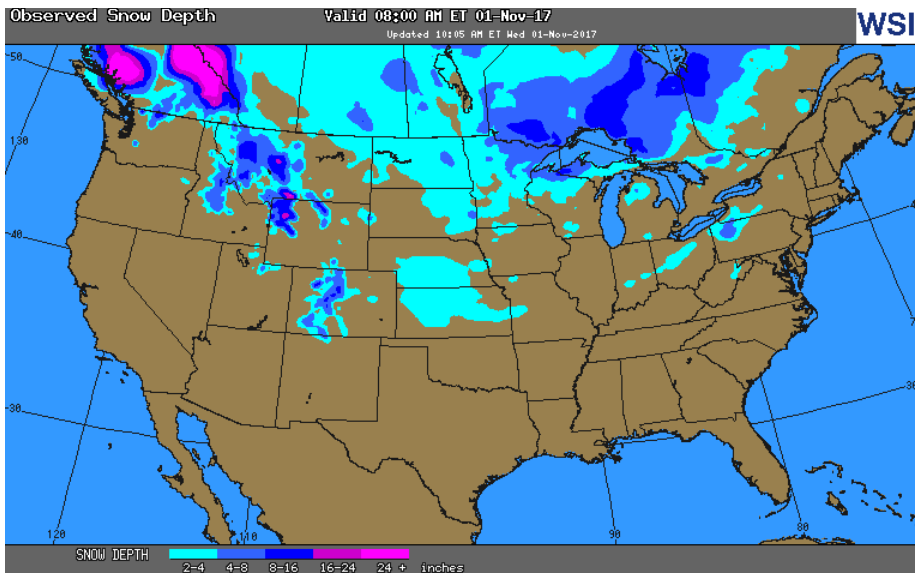
Last Week (BCF/d)

Power — +25.3

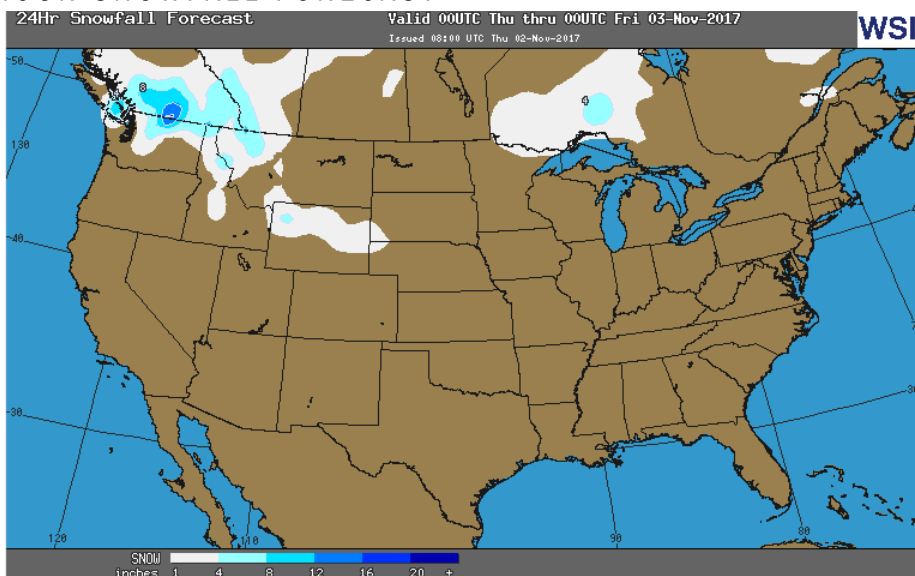
Total Demand — +70.6

[NEXT REPORT ON Nov 2]

**OBSERVED SNOW DEPTH**

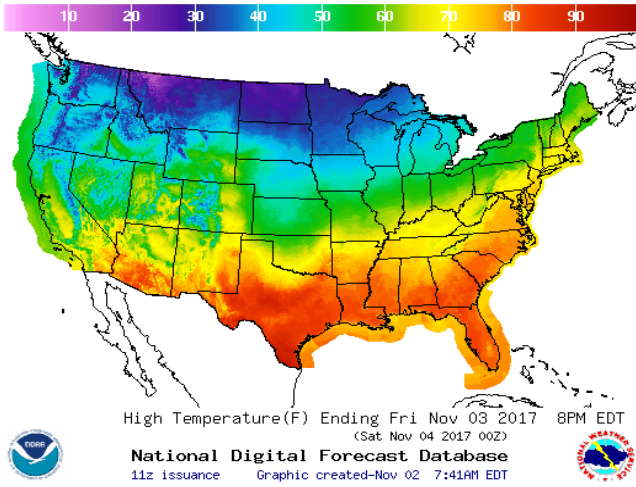


**24 HOUR SNOWFALL FORECAST**

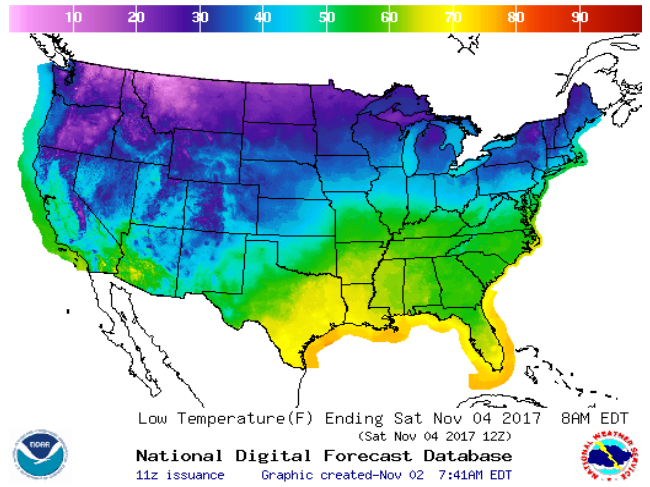


WEATHER – HIGH / LOW TEMPERATURE TOMORROW

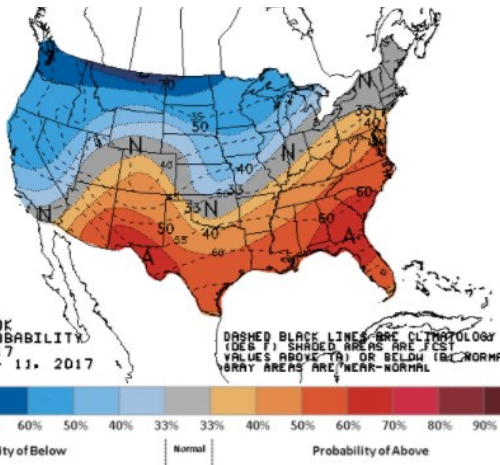
HIGH Temperature



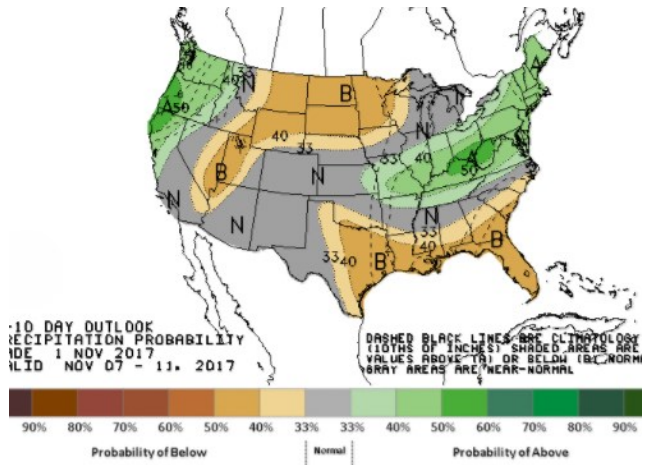
LOW Temperature



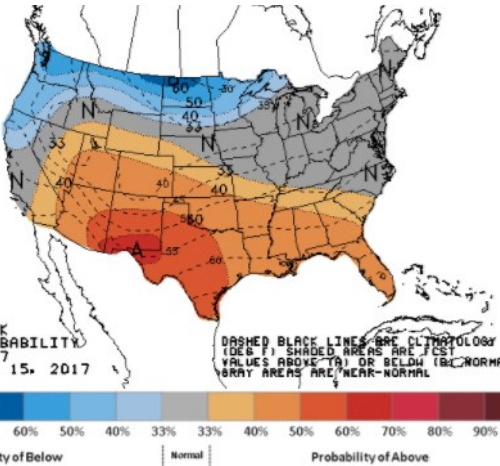
WEATHER – 6 TO 10 DAY OUTLOOK – NOAA  
Temperature



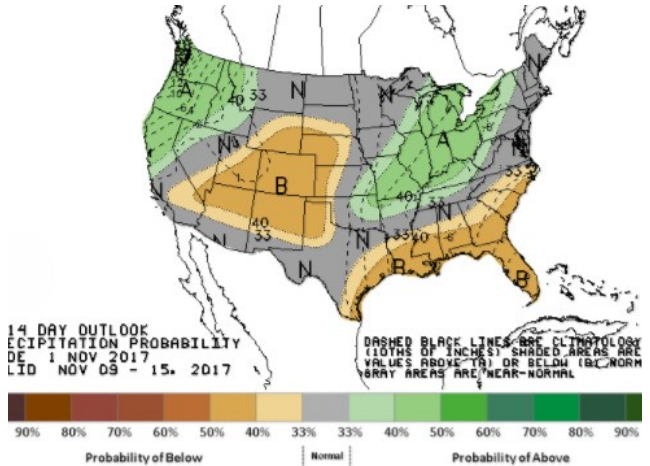
Precipitation



WEATHER – 8 TO 14 DAY OUTLOOK – NOAA  
Temperature



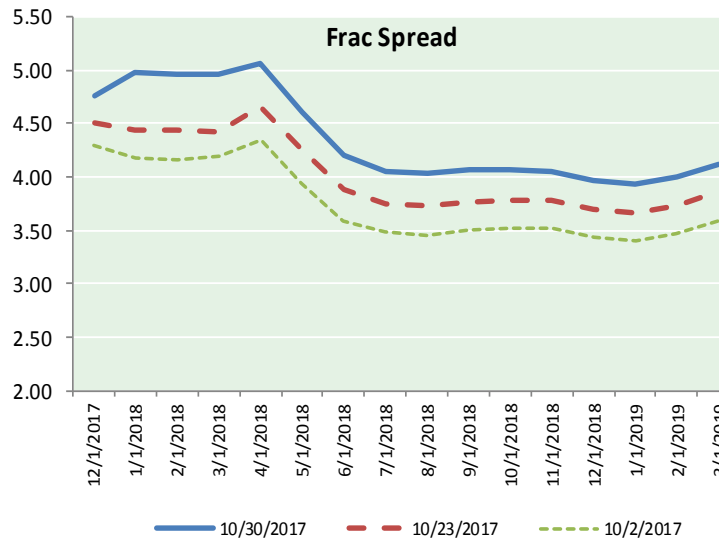
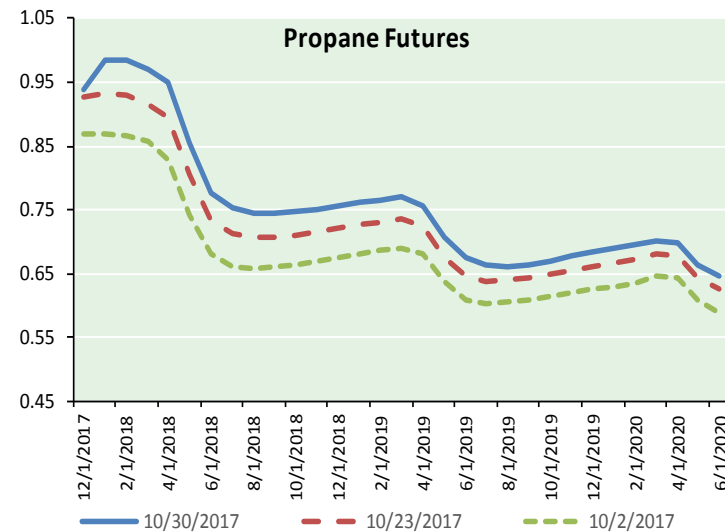
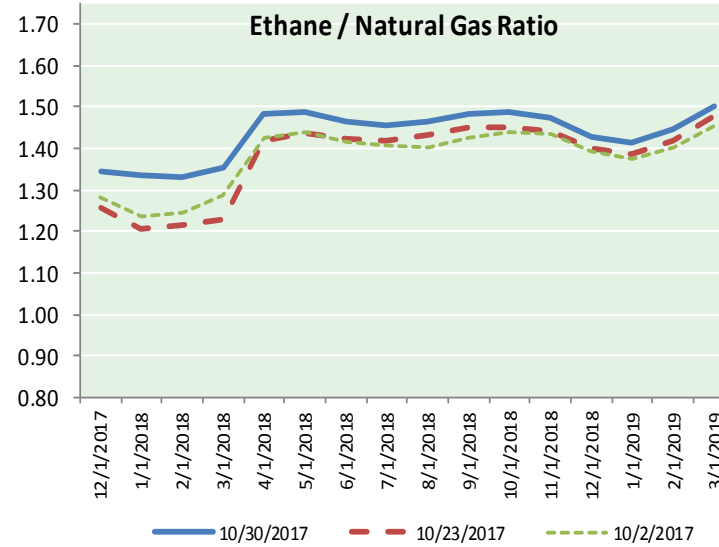
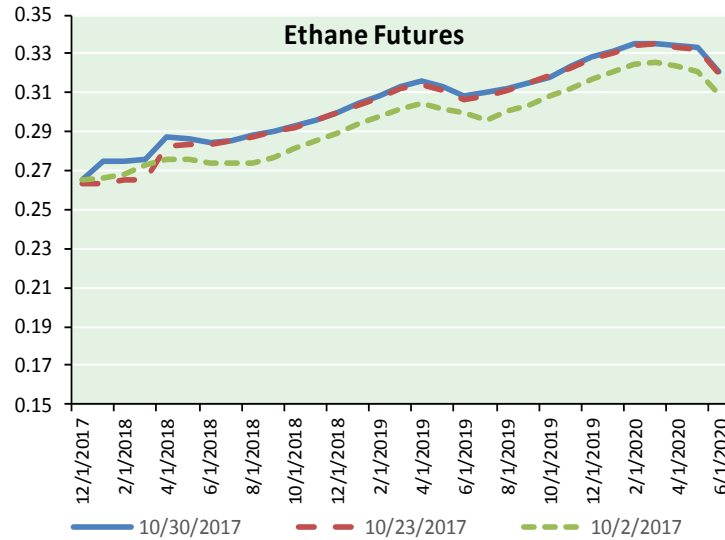
Precipitation



# NATURAL GAS NEWS



## ETHANE FUTURES, NG/ETHANE RATIO, PROPANE FUTURES, AND THE FRAC SPREAD



### CME Future Prices

#### Ethane (C2)

##### Non-LDH— Mont Belvieu

Month	Close	Change
Dec-17	0.266	0.001
Jan-18	0.275	0.008
Feb-18	0.275	0.006
Mar-18	0.276	0.008
Apr-18	0.287	0.005
May-18	0.286	0.004
Jun-18	0.284	0.001
Jul-18	0.286	0.002
Aug-18	0.288	0.003
Sep-18	0.291	0.003
Oct-18	0.293	0.003
Nov-18	0.296	0.001

1YR Strip 0.284 0.004

### CME Future Prices

#### Propane (C3)

##### Non-LDH— Mont Belvieu

Month	Close	Change
Dec-17	0.939	(0.002)
Jan-18	0.985	(0.010)
Feb-18	0.984	(0.008)
Mar-18	0.971	(0.006)
Apr-18	0.949	(0.004)
May-18	0.854	(0.002)
Jun-18	0.777	(0.001)
Jul-18	0.753	0.000
Aug-18	0.746	(0.001)
Sep-18	0.745	(0.001)
Oct-18	0.746	(0.001)
Nov-18	0.751	(0.001)

1YR Strip 0.850 (0.003)

# NATURAL GAS NEWS



## Prompt WTI (CL) Crude

### Daily Sentiment

**BULLISH**



#### RESISTANCE

55.05 & 55.80

#### SUPPORT

53.71 & 53.14

### FOLLOW US ON TWITTER:



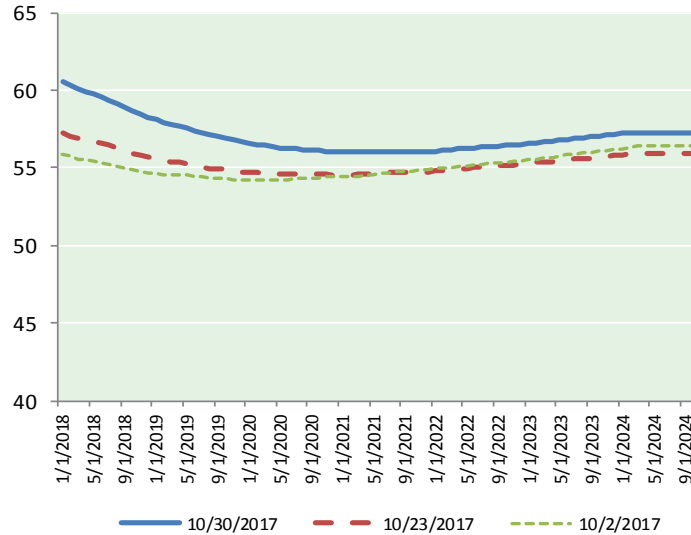
@MPG\_NatGasNews

## NYMEX Brent (BZ)

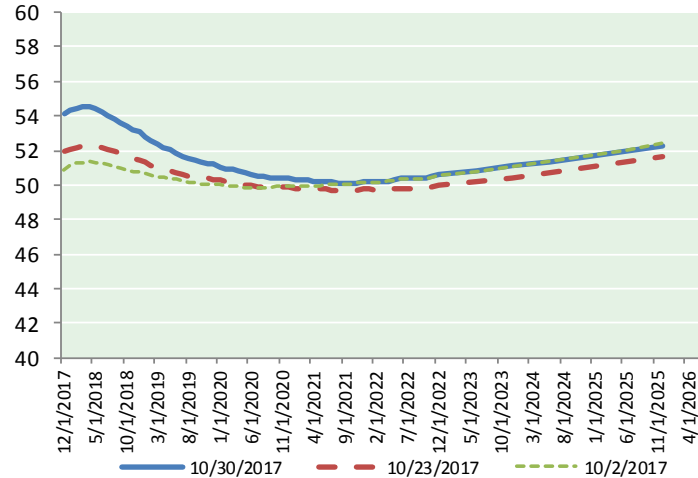
### Futures

Month	Close	Change
Jan-18	60.49	(0.45)
Feb-18	60.23	(0.43)
Mar-18	59.99	(0.45)
Apr-18	59.78	(0.46)
May-18	59.60	(0.46)
Jun-18	59.40	(0.44)
Jul-18	59.18	(0.45)
Aug-18	58.94	(0.46)
Sep-18	58.68	(0.47)
Oct-18	58.44	(0.48)
Nov-18	58.20	(0.49)
Dec-18	57.97	(0.50)
Jan-19	57.76	(0.51)
Feb-19	57.58	(0.52)
Mar-19	57.44	(0.53)
Apr-19	57.33	(0.52)
May-19	57.17	(0.52)
Jun-19	56.99	(0.51)
Jul-19	56.89	(0.50)
Aug-19	56.75	(0.49)
Sep-19	56.63	(0.49)
Oct-19	56.56	(0.49)
Nov-19	56.42	(0.49)
Dec-19	56.28	(0.49)
1YR Strip 2017	59.24	(0.46)
5YR Strip	56.62	(0.53)

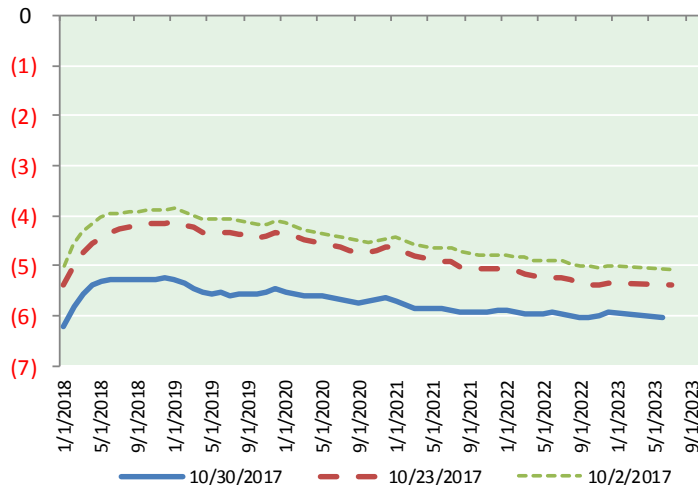
## BRENT CRUDE FORWARD CURVE



## WTI CRUDE FORWARD CURVE



## WTI-BRENT SPREAD



## FRAC Spread

### Specifications

Ethane :	42%	66,500 btu/g
Propane :	28%	90,830 btu/g
Butane :	11%	102,916 btu/g
Iso-Butane :	6%	98,935 btu/g
Natural Gasoline :	13%	115,021 btu/g

## Prompt NGL Futures

### (\$/gallon)

	Dec-17	Close	Change
Butane		1.054	(0.001)
Iso-Butane		1.051	(0.000)
Nat Gasoline		1.233	(0.001)

## NYMEX WTI (CL) Futures

Month	Close	Change
Dec-17	54.30	(0.08)
Jan-18	54.51	(0.08)
Feb-18	54.62	(0.07)
Mar-18	54.66	(0.06)
Apr-18	54.60	(0.07)
May-18	54.47	(0.07)
Jun-18	54.27	(0.09)
Jul-18	54.02	(0.12)
Aug-18	53.75	(0.15)
Sep-18	53.48	(0.18)
Oct-18	53.22	(0.21)
Nov-18	52.97	(0.24)
Dec-18	52.74	(0.26)
Jan-19	52.48	(0.28)
Feb-19	52.23	(0.30)
Mar-19	52.01	(0.30)
Apr-19	51.81	(0.31)
May-19	51.62	(0.31)
Jun-19	51.47	(0.31)
Jul-19	51.29	(0.31)
Aug-19	51.15	(0.31)
Sep-19	51.03	(0.32)
Oct-19	50.95	(0.32)
Nov-19	50.87	(0.32)
1YR Strip 2017	54.07	(0.12)
5YR Strip	51.05	(0.30)