

NATURAL GAS



MAY 7, 2019

Prior Day's NYMEX JUN-19 Contract (CT)



NYMEX NG Futures

Month	Close	Change
Jun-19	2.524	(0.043)
Jul-19	2.560	(0.040)
Aug-19	2.578	(0.038)
Sep-19	2.575	(0.038)
Oct-19	2.608	(0.039)
Nov-19	2.687	(0.038)
Dec-19	2.849	(0.034)
Jan-20	2.935	(0.033)
Feb-20	2.891	(0.031)
Mar-20	2.781	(0.027)
Apr-20	2.544	(0.020)
May-20	2.513	(0.017)
Jun-20	2.544	(0.016)
Jul-20	2.577	(0.015)
Aug-20	2.586	(0.014)
Sep-20	2.572	(0.013)
Oct-20	2.597	(0.012)
Nov-20	2.650	(0.011)
Dec-20	2.811	(0.008)
Jan-21	2.914	(0.008)
Feb-21	2.878	(0.008)
Mar-21	2.754	(0.005)
Apr-21	2.497	(0.002)
May-21	2.466	0.000
1YR Strip 2019	2.670	(0.033)
5YR Strip	2.626	(0.039)
	2.679	(0.007)

IN THE NEWS

Israel Shut Down Its Only Natural Gas Field Amid Rocket Fire From Gaza—Oil Price reported: Israel's Energy Minister Yuval Steinitz ordered on Sunday that the country's only operating natural gas field, the offshore Tamar field, be closed as a precaution after violence between militants in the Gaza Strip and Israel flared up at the end of last week. The natural gas from the Tamar

- **Israel Shut Down Its Only Natural Gas Field Amid Rocket Fire From Gaza**
- **Piedmont Natural Gas selects Matrix Service to build North Carolina LNG facility**

field is being pumped by a subsea pipeline from a rig which is within the range of some the hundreds of rockets fired from the Gaza Strip at Israel over the past few days. The temporary closure of the Tamar field put Israel's energy supply into an emergency mode, as power plants need to use alternatives to the natural gas they receive from the field to keep operating, according to The Times of Israel. The power plants will be burning diesel, coal, and liquefied natural gas (LNG) from a ship anchored in Israel's north. For more on this story visit oilprice.com or click <https://bit.ly/2Lw5V00>

Piedmont Natural Gas selects Matrix Service to build North Carolina LNG facility—Daily Energy Insider reported: Duke Energy subsidiary Piedmont Natural Gas has chosen contractor Matrix Service Inc. to construct a liquefied natural gas facility on 60 acres of Robeson County, N.C. "As an industry leader in low-temperature and cryogenic tanks and terminals, we are very pleased to have been awarded this important project," John Hewitt, Matrix Service president and CEO, said. "We look forward to delivering this project safely, on time and on budget." Throughout construction, the facility is expected to create up to 150 jobs. When completed, between 10 and 12 permanent employees will be stationed there, managing operations that will generate more than \$800,000 annually for the county's tax revenue. The facility will have 1 billion cubic feet of storage. Its construction is expected to last into the summer of 2021. For more on this story visit dailyenergyinsider.com or click <https://bit.ly/2WpNZWM>

12 MONTH CANDLESTICK (WEEKLY)



Prompt Natural Gas (NG) Daily Sentiment

BEARISH



RESISTANCE

2.56 & 2.60

SUPPORT

2.50 & 2.48

Trading Summary

NATURAL GAS

Futures	Close	Change
NG	2.524	(0.043)
Volume	234,397	(11,317)
Open Int.	1,269,534	15,533

CRUDE AND GASOLINE

Futures	Close	Change
Crude	62.25	0.31
RBOB	1.9966	(0.0299)
Crude/NG	24.66	0.53

METALS

Futures	Close	Change
Gold	1,281.70	

EQUITIES

Exchange	Close	Change
DOW	26,438.48	(66.47)
S&P 500	-2,505.72	(13.17)

CURRENCY

Currency	Close	Change
EUR/USD	1.1185	(0.0014)
USD/CND	1.2405	0.0010

Contact Us



Mansfield Energy Corp
1025 Airport Pkwy
Gainesville, GA 30501

www.mansfield.energy

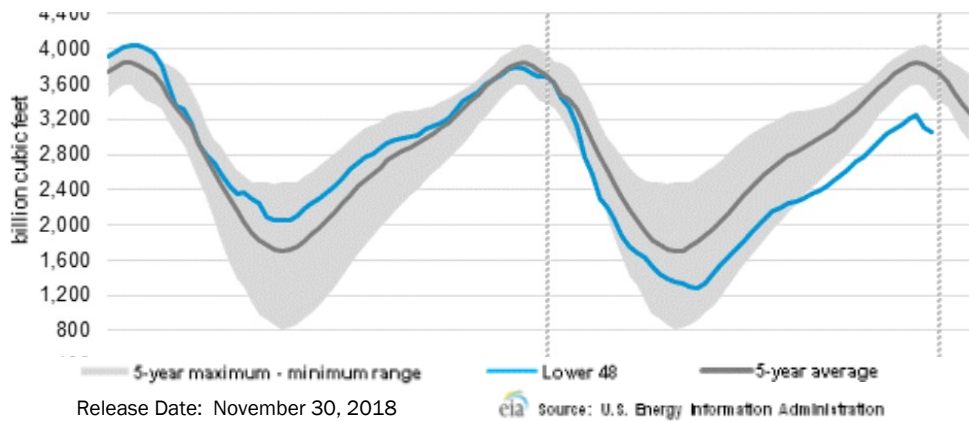
info@mansfieldoil.com

Phone: (800) 695-6626



NATURAL GAS NEWS

WEEKLY GAS IN UNDERGROUND STORAGE WITH 5-YR RANGE



Rig Count

Report Date: March 22, 2019

	Total	Change
US -	1,016	(22)
CN -	105	(106)

EIA Weekly NG Storage Actual and Surveys for May 2, 2019

Released May 1, 2019

Range — +76 to +96

PIRA— (112)

PointLogic — (126)

Citi Futures — (126)

EIA ACTUAL — (123)

Total Working Gas In Storage

1,462 BCF

(123) BCF (LAST WEEK)

(128) BCF (LAST YEAR)

(316) BCF (5-YR AVG)

U.S. Natural Gas Supply Gas Week 4/25 – 5/1

Average daily values (BCF/D):

Last Year (BCF/d)

Dry Production — +89.6

Total Supply — +94.3

Last Week (BCF/d)

Dry Production — +90.0

Total Supply — +94.9

[NEXT REPORT ON May 10]

U.S. Natural Gas Demand Gas Week 4/25 – 5/1

Average daily values (BCF/D):

Last Year (BCF/d)

Power — +22.2

Total Demand — +74.5

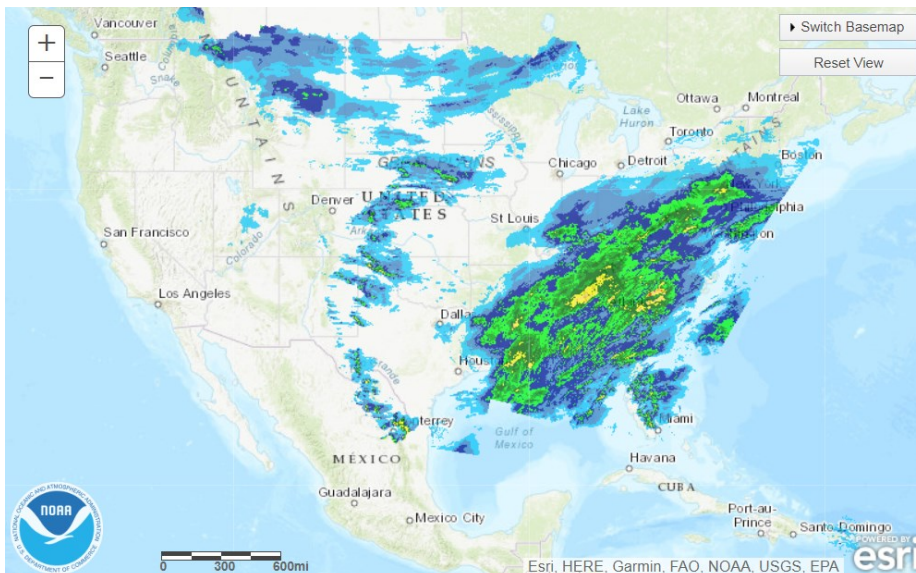
Last Week (BCF/d)

Power — +21.8

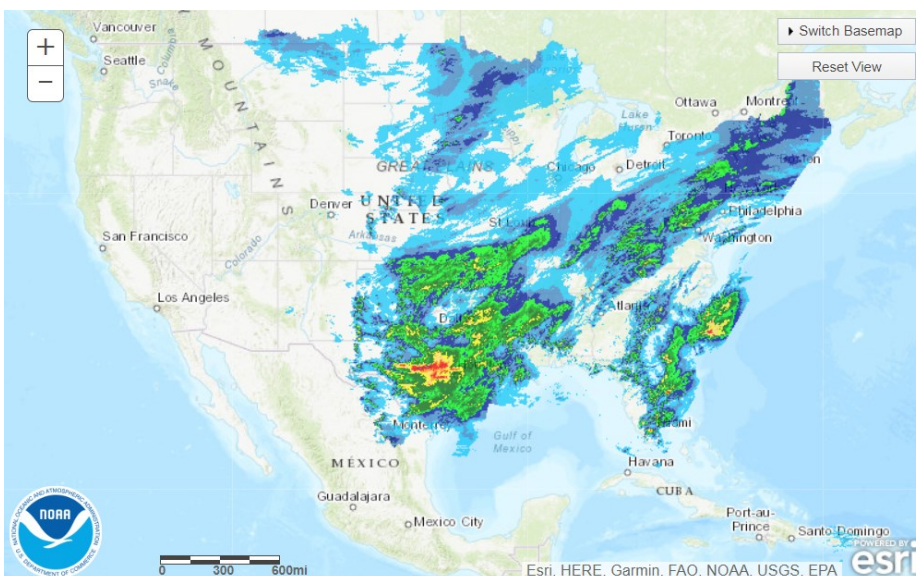
Total Demand — +73.0

[NEXT REPORT ON May 10]

TODAY'S PRECIPITATION

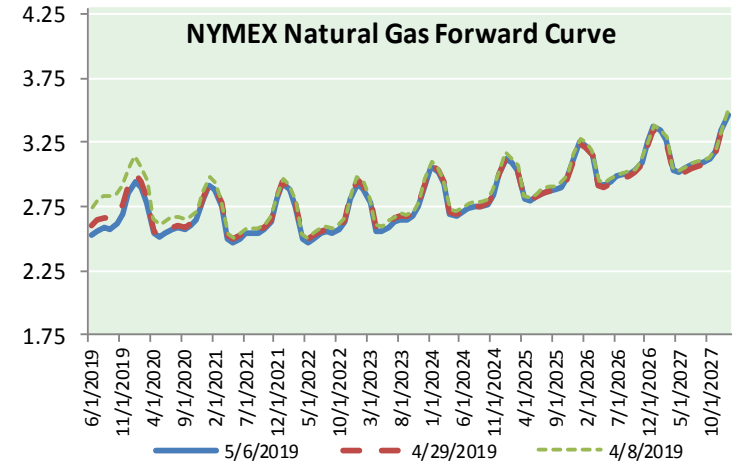
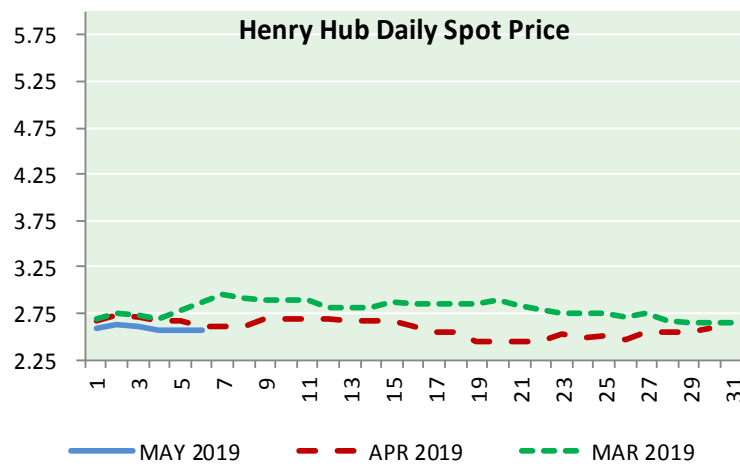
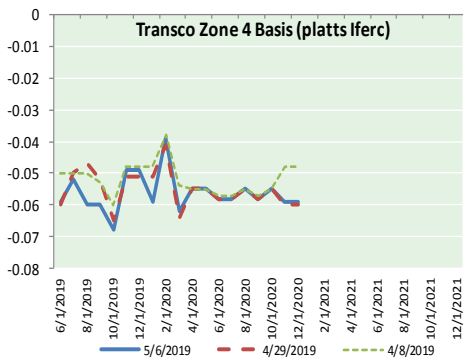
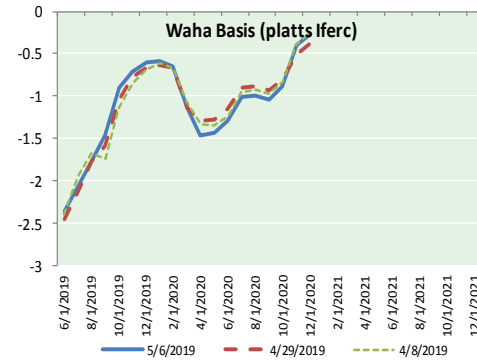
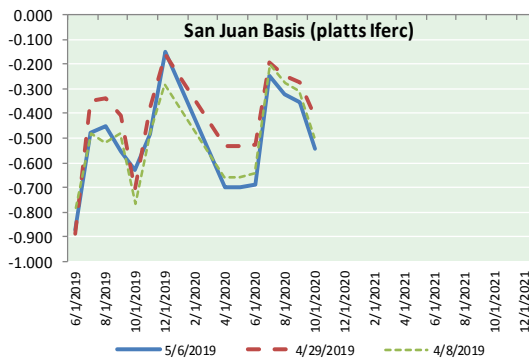
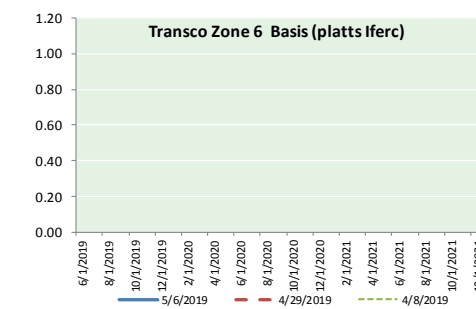
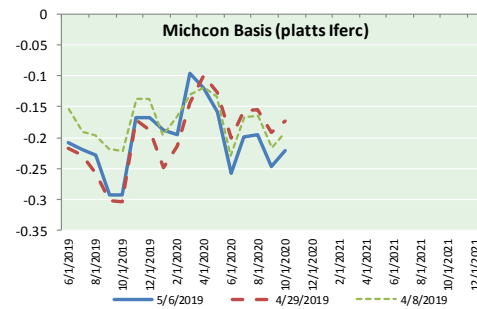
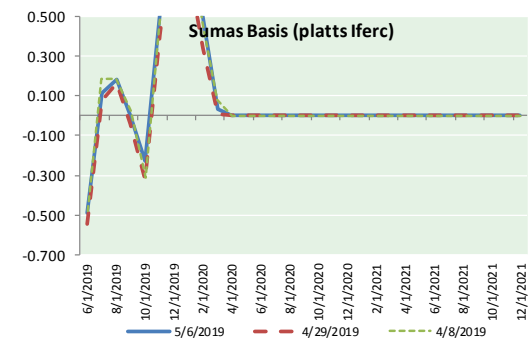


24 HOUR PRECIPITATION





NATURAL GAS BASIS FUTURES, HENRY HUB SPOT PRICES, AND FORWARD CURVE



NYMEX WTI Delivery
Month Average (\$/bbl)
(Excluding Weekends and Holidays)

Month: May 2019

Day	Price	Day	Price
1	63.60	16	
2	61.81	17	
3	61.94	18	
4		19	
5		20	
6	62.25	21	
7		22	
8		23	
9		24	
10		25	
11		26	
12		27	
13		28	
14		29	
15		30	
		31	

Average (May) 62.4000
(through 05/06/2019)

Average (Apr) 63.9541

Average (Mar) 58.1681

CME NG Option Prices

ATM Call

Month	Strike	Close	Imp Vol
Jul-19			
Aug-19	2.550	0.096	22.5
Sep-19			
Oct-19			
Nov-19			

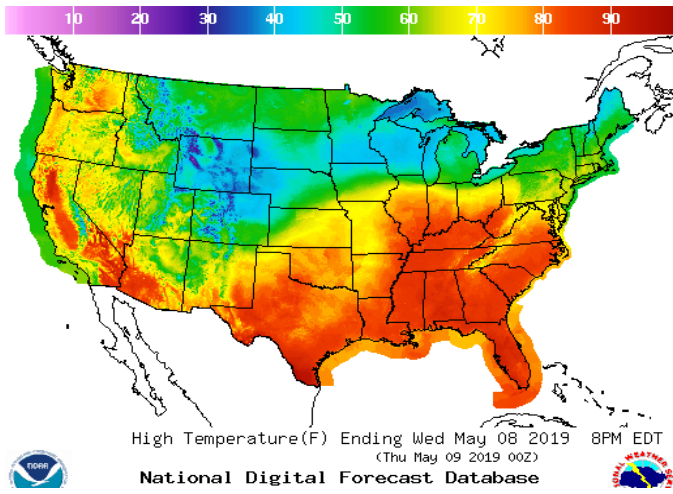
CME NG Option Prices

ATM Put

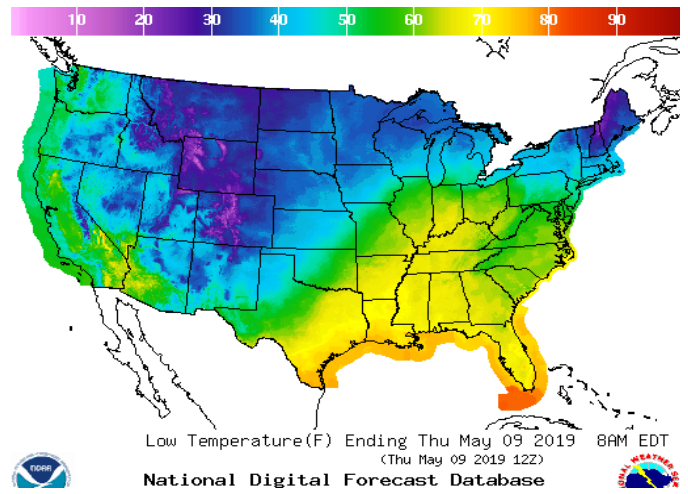
Month	Strike	Close	Imp Vol
Jul-19			
Aug-19	2.550	0.088	26.2
Sep-19			
Oct-19			
Nov-19			

WEATHER – HIGH / LOW TEMPERATURE TOMORROW

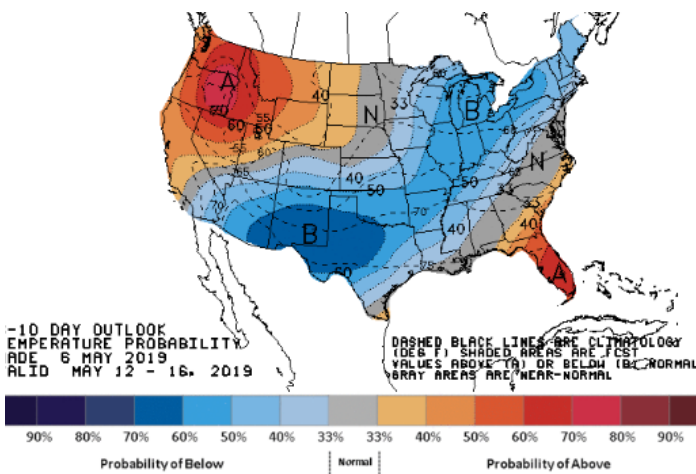
HIGH Temperature



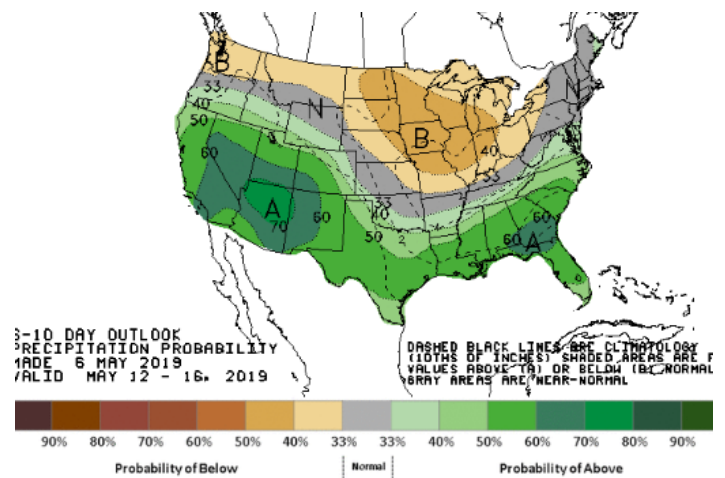
LOW Temperature



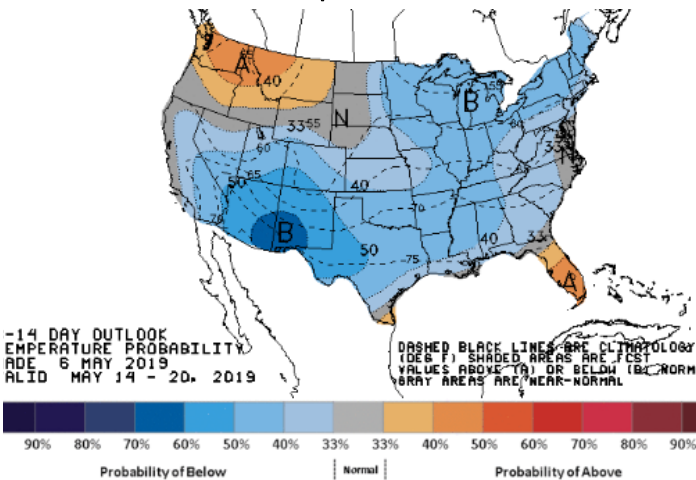
WEATHER – 6 TO 10 DAY OUTLOOK – NOAA
Temperature



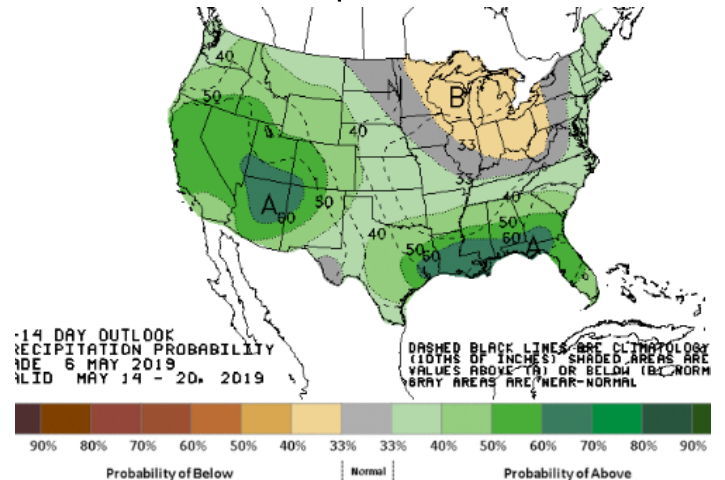
Precipitation



WEATHER – 8 TO 14 DAY OUTLOOK – NOAA
Temperature

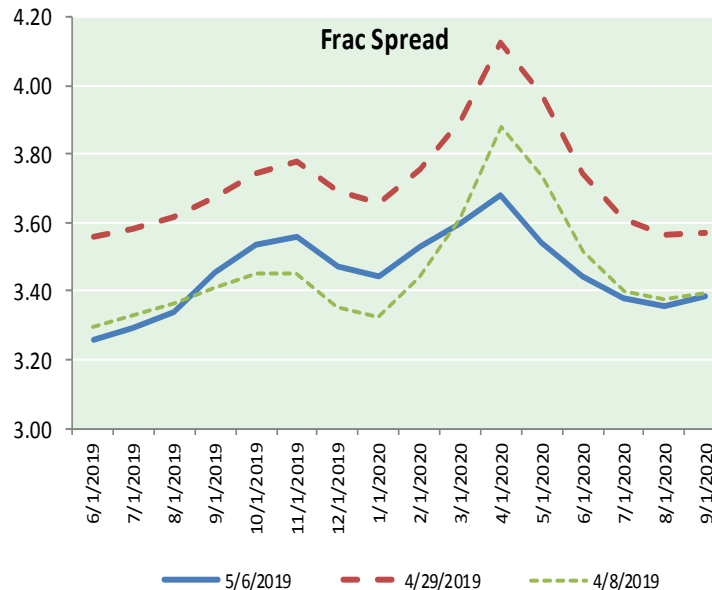
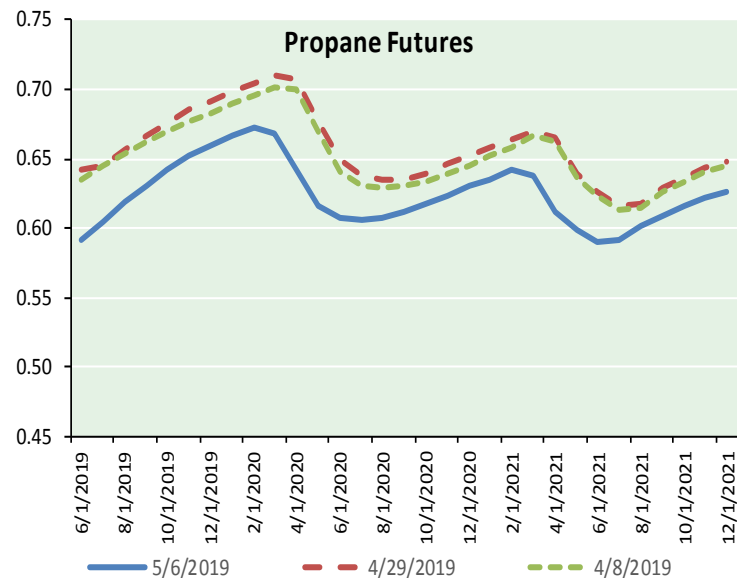
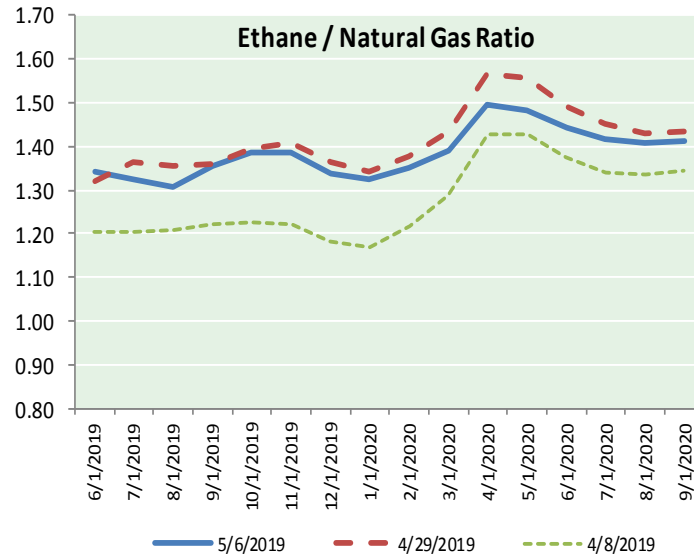
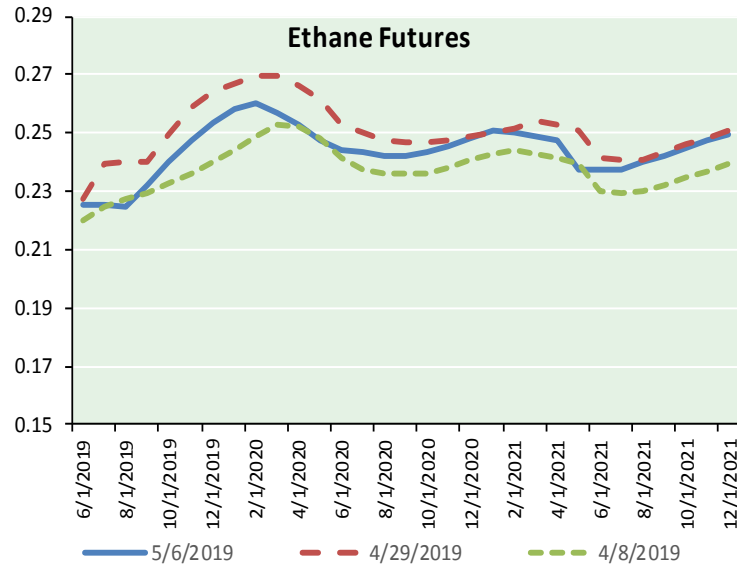


Precipitation





ETHANE FUTURES, NG/ETHANE RATIO, PROPANE FUTURES, AND THE FRAC SPREAD



CME Future Prices

Month	Close	Change
Jun-19	0.225	(0.004)
Jul-19	0.226	(0.005)
Aug-19	0.224	(0.005)
Sep-19	0.232	(0.005)
Oct-19	0.240	(0.005)
Nov-19	0.248	(0.006)
Dec-19	0.254	(0.004)
Jan-20	0.258	(0.004)
Feb-20	0.260	(0.003)
Mar-20	0.257	(0.003)
Apr-20	0.253	(0.002)
May-20	0.248	(0.001)
1YR Strip	0.244	(0.004)

CME Future Prices

Propane (C3)
Non-LDH— Mont Belvieu

Month	Close	Change
Jun-19	0.591	(0.005)
Jul-19	0.605	(0.008)
Aug-19	0.619	(0.007)
Sep-19	0.631	(0.007)
Oct-19	0.643	(0.007)
Nov-19	0.653	(0.007)
Dec-19	0.660	(0.007)
Jan-20	0.666	(0.008)
Feb-20	0.672	(0.008)
Mar-20	0.669	(0.009)
Apr-20	0.642	(0.008)
May-20	0.616	(0.008)
1YR Strip	0.639	(0.007)

NATURAL GAS NEWS



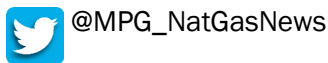
Prompt WTI (CL) Crude
Daily Sentiment

BULLISH



RESISTANCE
63.45 & 64.66
SUPPORT
60.54 & 58.84

FOLLOW US ON TWITTER:

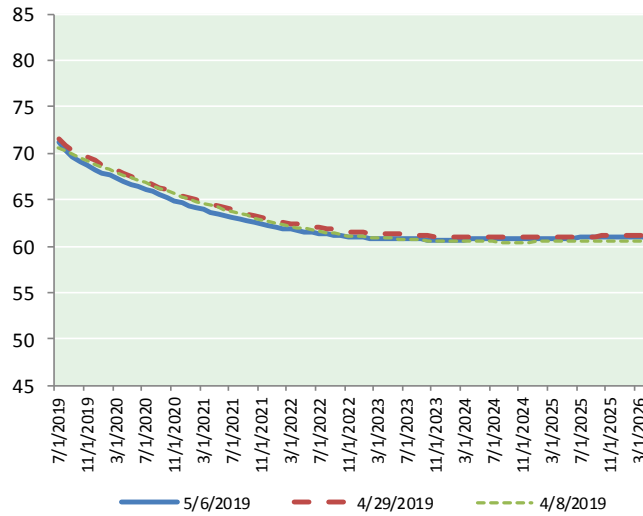


NYMEX Brent (BZ)

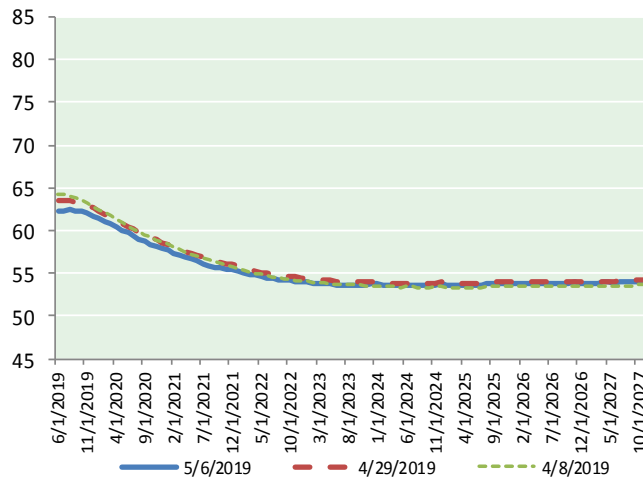
Futures

Month	Close	Change
Jun-19	62.25	0.31
Jul-19	62.37	0.33
Aug-19	62.42	0.35
Sep-19	62.35	0.34
Oct-19	62.20	0.34
Nov-19	61.99	0.35
Dec-19	61.72	0.34
Jan-20	61.42	0.35
Feb-20	61.09	0.35
Mar-20	60.75	0.35
Apr-20	60.41	0.36
May-20	60.08	0.38
Jun-20	59.77	0.38
Jul-20	59.42	0.39
Aug-20	59.08	0.40
Sep-20	58.76	0.41
Oct-20	58.46	0.41
Nov-20	58.21	0.42
Dec-20	57.97	0.42
Jan-21	57.65	0.42
Feb-21	57.35	0.43
Mar-21	57.08	0.44
Apr-21	56.84	0.44
May-21	56.62	0.43
1YR Strip	61.59	0.35
2019	62.19	0.34
5YR Strip	56.48	0.41

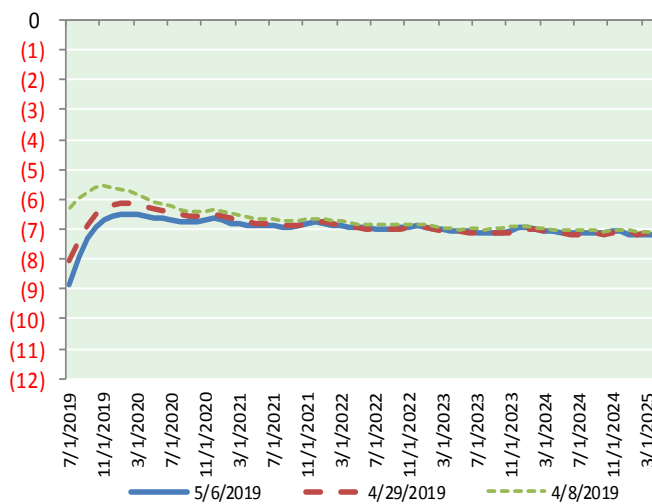
BRENT CRUDE FORWARD CURVE



WTI CRUDE FORWARD CURVE



WTI-BRENT SPREAD



FRAC Spread

Specifications

Ethane :	42%	66,500 btu/g
Propane:	28%	90,830 btu/g
Butane:	11%	102,916 btu/g
Iso-Butane:	6%	98,935 btu/g
Natural Gasoline:	13%	115,021 btu/g

Prompt NGL Futures

	Jun-19	Close	Change
Butane	0.643	(0.014)	
Iso-Butane	0.652	(0.016)	
Nat Gasoline	1.287	0.007	

NYMEX WTI (CL) Futures

Month	Close	Change
Jul-19	71.24	0.39
Aug-19	70.37	0.34
Sep-19	69.68	0.31
Oct-19	69.12	0.30
Nov-19	68.68	0.29
Dec-19	68.27	0.29
Jan-20	67.91	0.30
Feb-20	67.58	0.31
Mar-20	67.27	0.31
Apr-20	66.99	0.32
May-20	66.69	0.33
Jun-20	66.38	0.34
Jul-20	66.11	0.35
Aug-20	65.82	0.36
Sep-20	65.52	0.36
Oct-20	65.22	0.37
Nov-20	64.91	0.38
Dec-20	64.61	0.39
Jan-21	64.37	0.39
Feb-21	64.14	0.40
Mar-21	63.92	0.41
Apr-21	63.70	0.41
May-21	63.51	0.44
Jun-21	63.29	0.44
1YR Strip	68.35	0.32
2019	69.56	0.32
5YR Strip	63.23	0.47