

# NATURAL GAS



NEWS

MAY 26, 2017

## Prior Day's NYMEX Jun-17 Contract (CT)



## NYMEX NG Futures

Month	Close	Change
Jun-17	3.184	(0.025)
Jul-17	3.275	(0.025)
Aug-17	3.317	(0.025)
Sep-17	3.299	(0.023)
Oct-17	3.322	(0.022)
Nov-17	3.379	(0.021)
Dec-17	3.502	(0.018)
Jan-18	3.576	(0.017)
Feb-18	3.547	(0.017)
Mar-18	3.463	(0.013)
Apr-18	2.939	0.003
May-18	2.880	0.005
Jun-18	2.907	0.005
Jul-18	2.934	0.006
Aug-18	2.942	0.006
Sep-18	2.919	0.006
Oct-18	2.934	0.006
Nov-18	2.982	0.006
Dec-18	3.118	0.008
Jan-19	3.212	0.008
Feb-19	3.192	0.010
Mar-19	3.118	0.010
Apr-19	2.712	0.007
May-19	2.672	0.007
1YR Strip	3.307	(0.017)
2017	3.325	(0.023)
5YR Strip	2.972	(0.001)

## IN THE NEWS

TMX Group To Test Natural Gas Transmission With Blockchain-Based Prototype — ETH News reports: TMX Group announced the development of a blockchain-based prototype that enables

- **TMX Group To Test Natural Gas Transmission With Blockchain-Based Prototype**
- **Targa to Build NGL Pipeline from Permian Basin to Mont Belvieu, Texas**

the transfer of natural gas. The project was the result of a partnership between Natural Gas Exchange (NGX), TMX's wholly-owned subsidiary and a leading North American energy exchange, and Nuco Inc., a digital infrastructure provider. The prototype seeks to improve the tracking of natural gas flow from a variety of delivery locations within the United States. As a result, the NGX natural gas settlement process will be optimized and streamlined as clients will be able to track gas movement across different locations and submit more accurate reports. These features enable the prototype to enhance delivery and payment processing, mitigate risks, and provide secure transaction data. For more on this story visit [ethnews.com](http://ethnews.com) or click the following link <http://bit.ly/2qoCNsz>

Targa to Build NGL Pipeline from Permian Basin to Mont Belvieu, Texas - Globe Newswire reports: Targa Resources Corp. announced today plans to construct a new common carrier natural gas liquids pipeline from the Permian Basin. Targa's NGL pipeline will transport volumes from the Permian Basin, and also from Targa's North Texas system, to Targa's fractionation and storage complex in the NGL market hub at Mont Belvieu, Texas. Grand Prix will be supported by Targa's volumes and other third party customer commitments, and is expected to be in service in the second quarter of 2019. The capacity of the pipeline from the Permian Basin will be approximately 300 thousand barrels per day,. For more on this story visit [globeonewswire.com](http://globeonewswire.com) or click the following link <http://bit.ly/2qXqgQQ>

## 12 MONTH CANDLESTICK (WEEKLY)



## Prompt Natural Gas (NG) Daily Sentiment

NEUTRAL



RESISTANCE  
3.25 & 3.31  
SUPPORT  
3.13 & 3.08

## Trading Summary

### NATURAL GAS

Futures	Close	Change
NG	3.184	(0.025)
Volume	432,819	(429,807)
Open Int.	1,528,456	(10,463)

### CRUDE AND GASOLINE

Futures	Close	Change
Crude	48.90	(2.46)
RBOB	1.6093	(0.0433)
Crude/NG	14.93	(0.63)

### METALS

Futures	Close	Change
Gold	1,256.40	5.30

### EQUITIES

Exchange	Close	Change
DOW	21,082.95	70.53
S&P 500	2,294.62	(109.77)

### CURRENCY

Currency	Close	Change
EUR/USD	1.1216	0.0004
USD/CND	1.3458	(0.0033)

## Contact Us



**Mansfield Energy Corp**  
1025 Airport Pkwy  
Gainesville, GA 30501

[www.mansfield.energy](http://www.mansfield.energy)

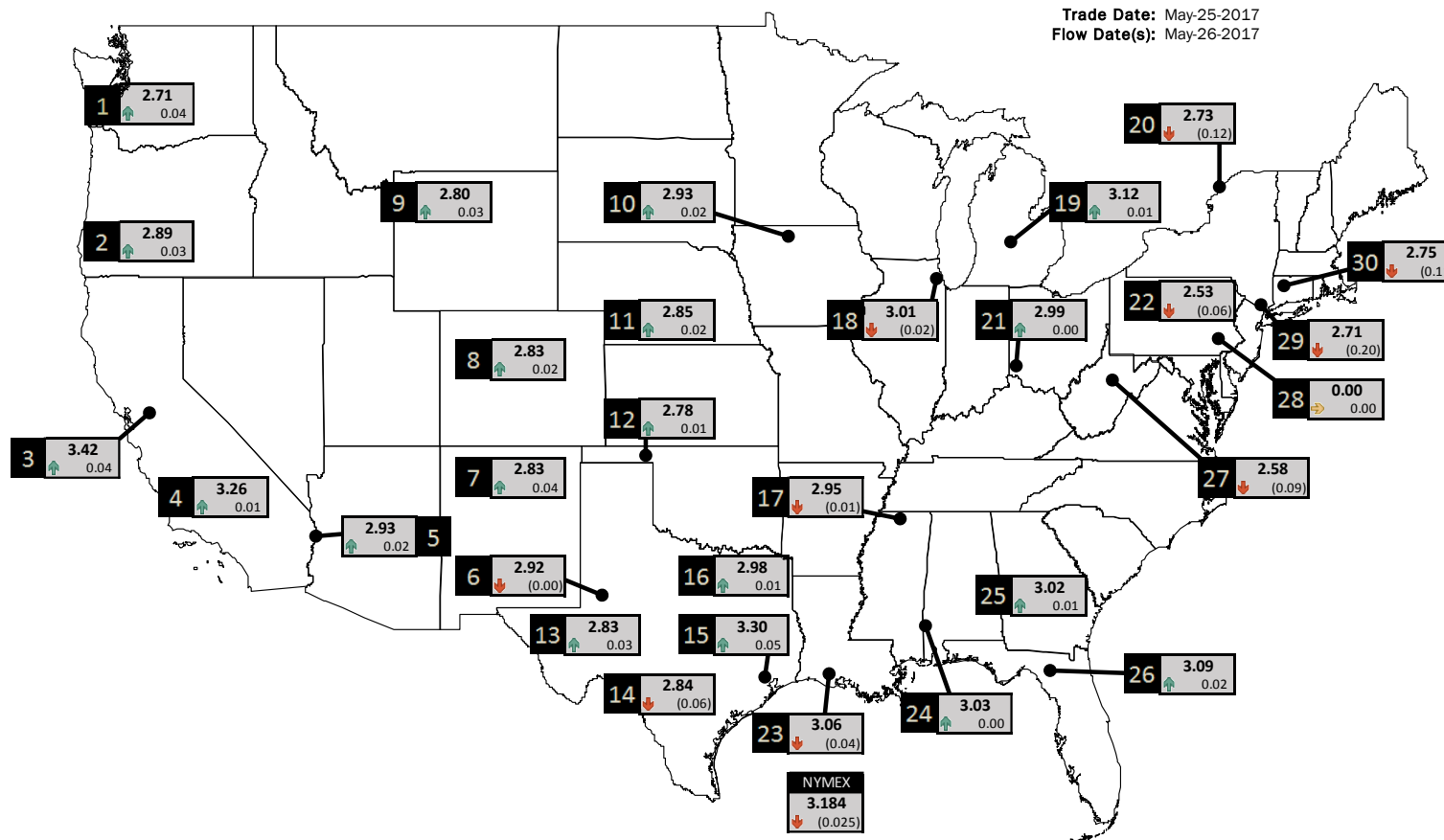
[info@mansfieldoil.com](mailto:info@mansfieldoil.com)

Phone: (800) 695-6626



# NATURAL GAS NEWS

## PHYSICAL SPOT NATURAL GAS PRICE MAP



ID	DAILY INDEX	PRICE	CHANGE
1	Stanfield	2.71	0.04
2	Malin	2.89	0.03
3	PG&E - Citygate	3.42	0.04
4	Socal-Citygate	3.26	0.01
5	SoCal Border	2.93	0.02
6	Waha	2.92	(0.00)
7	EPSJ Blanco Pool	2.83	0.04
8	Opal Plant Tailgate	2.83	0.02
9	NWP-Wyoming	2.80	0.03
10	Ventura	2.93	0.02

ID	DAILY INDEX	PRICE	CHANGE
11	NGPL-Midcont Pool	2.85	0.02
12	Panhandle	2.78	0.01
13	EP-Permian	2.83	0.03
14	TGP-ZO	2.84	(0.06)
15	Houston Ship Channel	3.30	0.05
16	NGPL-TXOK	2.98	0.01
17	TETCO-M1 30	2.95	(0.01)
18	Chicago Citygates	3.01	(0.02)
19	Michcon	3.12	0.01
20	Iroquois (into)	2.73	(0.12)

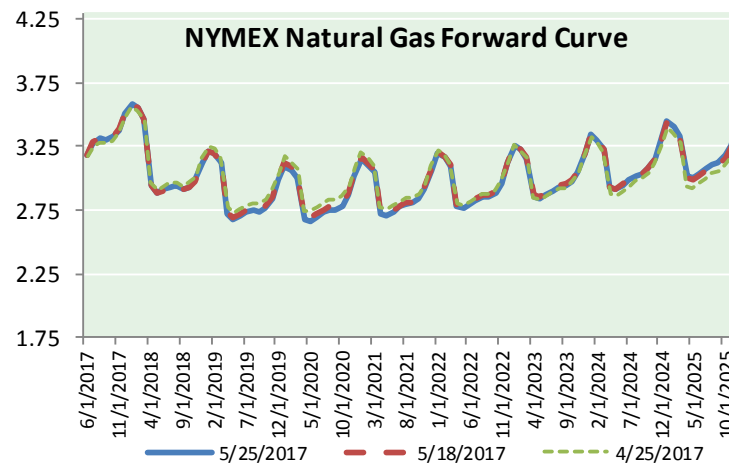
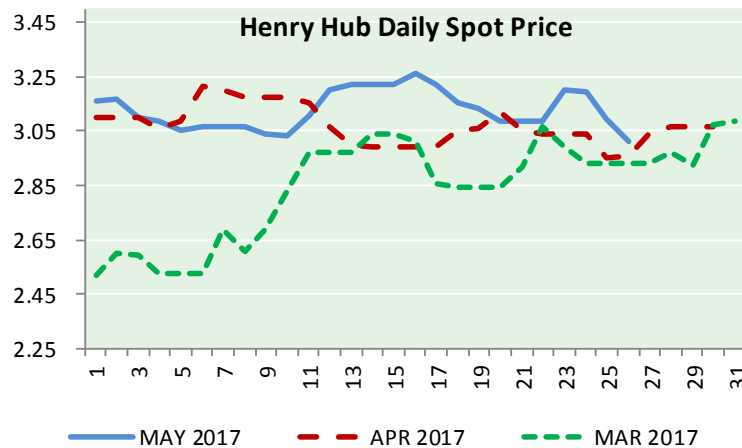
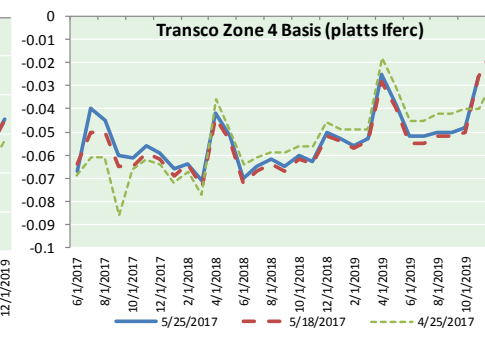
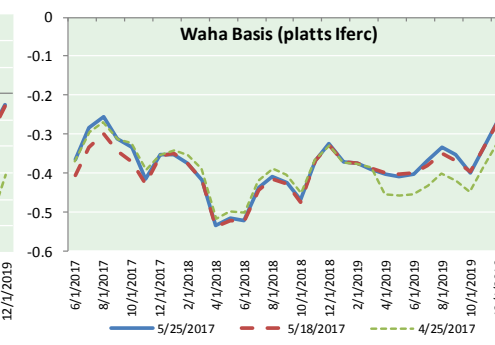
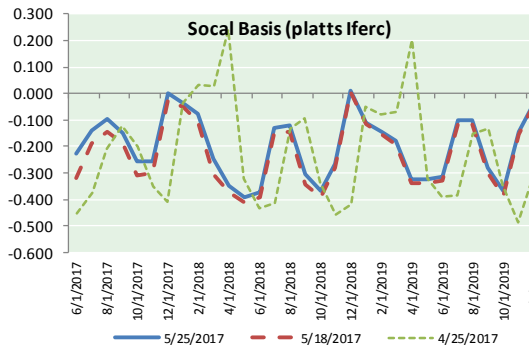
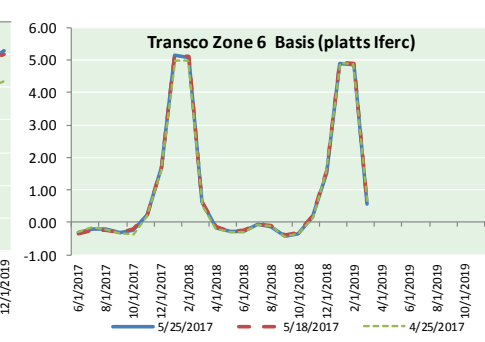
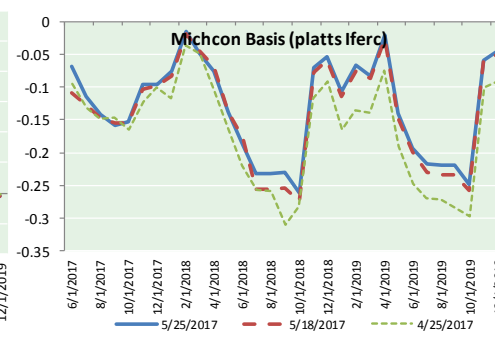
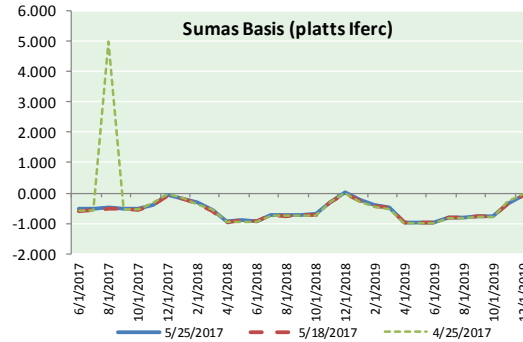
ID	DAILY INDEX	PRICE	CHANGE
21	REX E-ANR	2.99	0.00
22	Leidy-Transco	2.53	(0.06)
23	Henry	3.06	(0.04)
24	Transco-85	3.03	0.00
25	Sonat-ZO South	3.02	0.01
26	FGT-Z3	3.09	0.02
27	Dominion-South	2.58	(0.09)
28	Transco-Z6 (non-NY)	0.00	0.00
29	Transco-Z6 (NY)	2.71	(0.20)
30	Iroquois-Z2	2.75	(0.11)

DISCLAIMER: The content herein is privileged and confidential. Content is presented for informational purposes and is a reflection of the market opinions of its authors subject to change without notice. Content is derived from sources believed to be accurate at the time of release but carries no guarantee of accuracy or completeness. Mansfield Energy Corp and its clients may or may not take positions similar or opposite those discussed herein. The reader should realize that the trading of commodities involves risk, and the reader assumes all responsibility for the risk of financial losses.





NATURAL GAS BASIS FUTURES, HENRY HUB SPOT PRICES, AND FORWARD CURVE



CME NG Option Prices

ATM Call

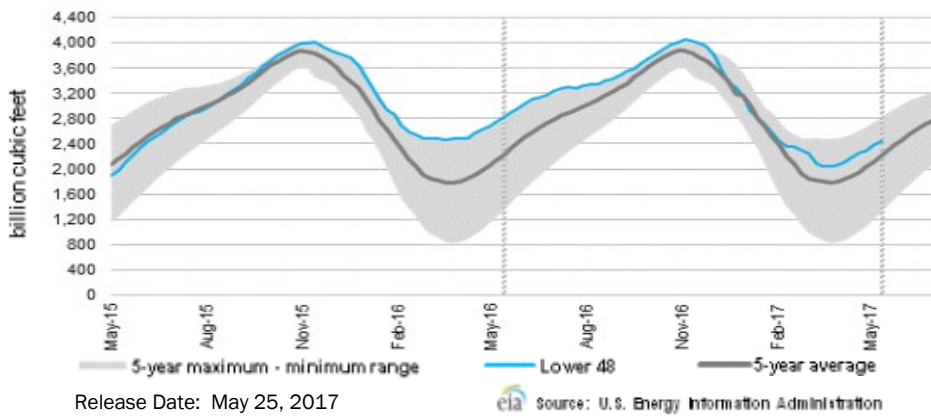
Month	Strike	Close	Imp	Vol
Jun-17	3.200			
Jul-17	3.300	0.127		33.7
Aug-17	3.350	0.165		31.9
Sep-17	3.300	0.221		31.9
Oct-17	3.350	0.240		31.9
Nov-17	3.400	0.276		31.9
Dec-17	3.500	0.337		32.8
Jan-18	0.000			
Feb-18	3.550	0.468		40.3
Mar-18	3.500	0.489		42.2
Apr-18	2.950	0.301		28.1
May-18	3.000	0.240		26.2
Jun-18	2.950	0.276		25.3
Jul-18	2.900	0.326		25.3
Aug-18	2.900	0.336		24.8
Sep-18	2.900	0.334		24.8
Oct-18				

CME NG Option Prices

ATM Put

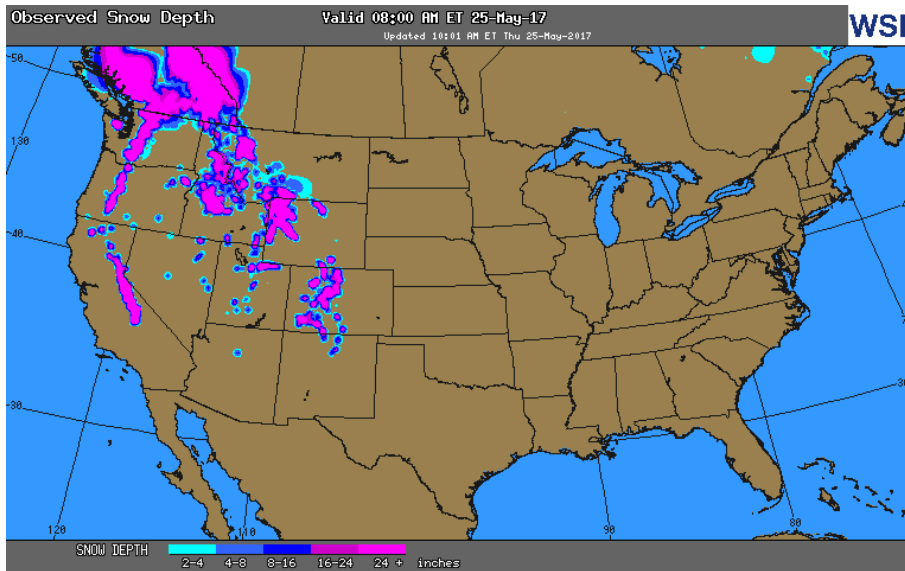
Month	Strike	Close	Imp	Vol
Jun-17	3.200			
Jul-17	3.300	0.153		37.5
Aug-17	3.350	0.206		35.6
Sep-17	3.300	0.222		33.7
Oct-17	3.350	0.271		33.7
Nov-17	3.400	0.303		33.7
Dec-17	3.500	0.340		34.7
Jan-18	0.000			
Feb-18	3.550			
Mar-18	3.500	0.526		42.2
Apr-18	2.950	0.316		29.0
May-18	3.000	0.360		26.2
Jun-18	2.950			
Jul-18	2.900			
Aug-18	2.900			
Sep-18	2.900			
Oct-18				

WEEKLY GAS IN UNDERGROUND STORAGE WITH 5-YR RANGE

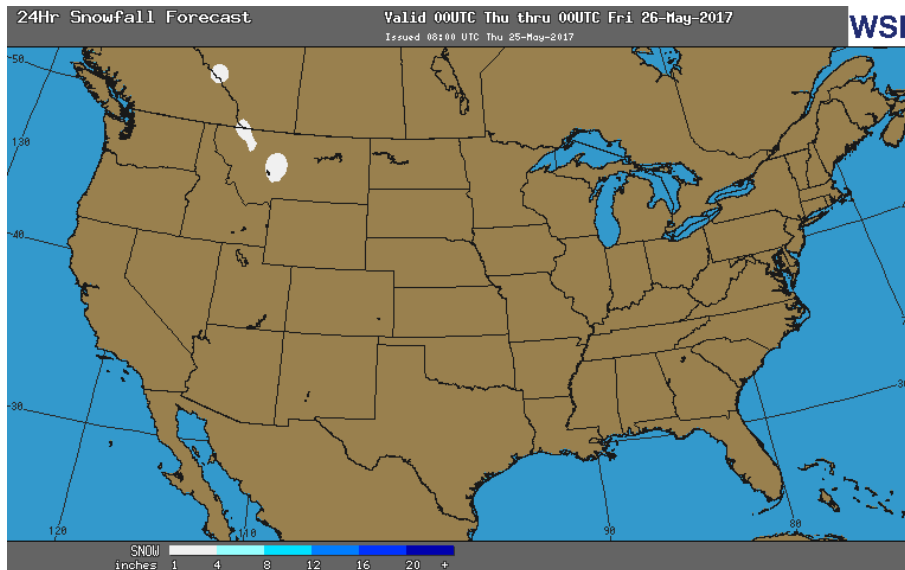


Release Date: May 25, 2017

OBSERVED SNOW DEPTH



24 HOUR SNOWFALL FORECAST



Rig Count

Report Date: May 19, 2017

	Total	Change
US -	901	+16
CN -	85	+5

EIA Weekly NG Storage Actual and Surveys for May 19, 2017

Released May 25, 2017

- PIRA — +68
- ARM — +78
- Reuters — +71

EIA ACTUAL — +75

Total Working Gas In Storage

**2,444 BCF**

- +75 BCF (LAST WEEK)
- (371) BCF (LAST YEAR)
- +241 BCF (5-YR AVG)

U.S. Natural Gas Supply Gas Week 5/18-5/24

Average daily values (BCF/D):

Last Year (BCF/d)

Dry Production — +71.8

Total Supply — +77.6

Last Week (BCF/d)

Dry Production — +71.0

Total Supply — +76.7

[NEXT REPORT ON JUN 1]

U.S. Natural Gas Demand Gas Week 5/11-5/17

Average daily values (BCF/D):

Last Year (BCF/d)

Power — +25.6

Total Demand — +68.6

Last Week (BCF/d)

Power — +24.5

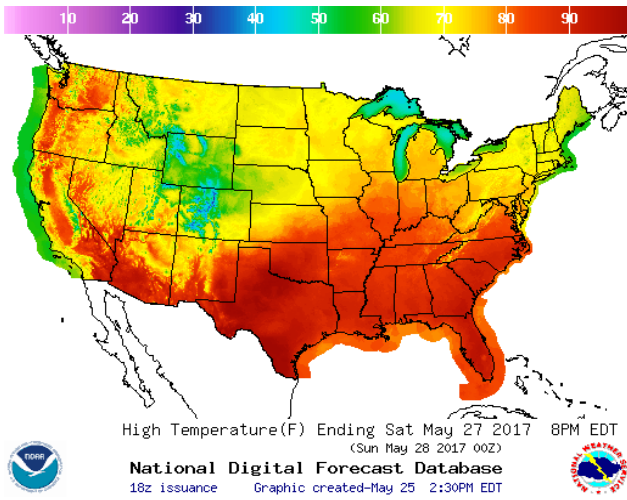
Total Demand — +69.5

[NEXT REPORT ON JUN 1]

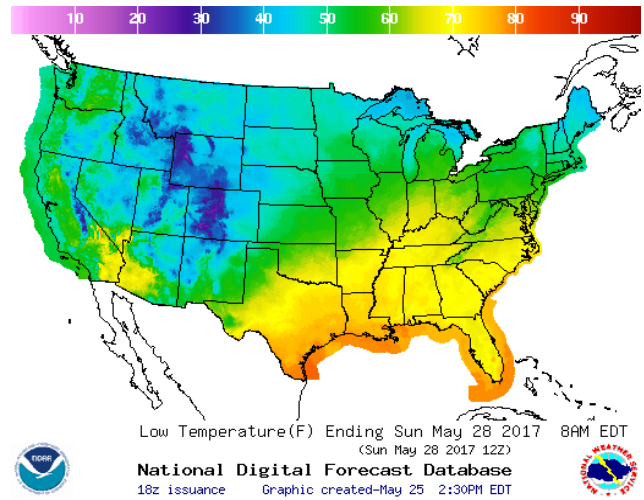
# NATURAL GAS NEWS

## WEATHER – HIGH / LOW TEMPERATURE SATURDAY

### HIGH Temperature

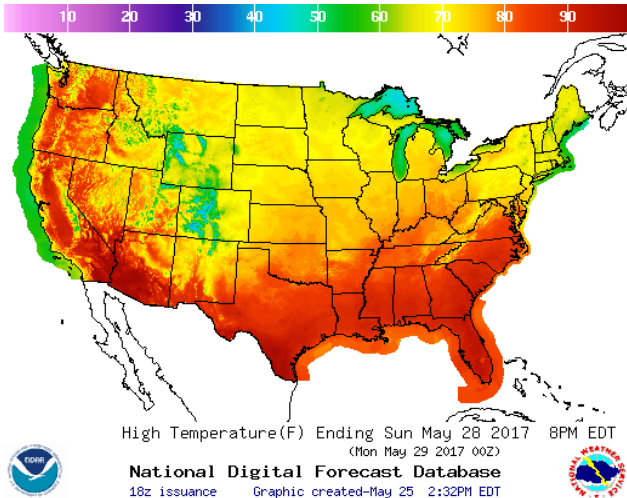


### LOW Temperature

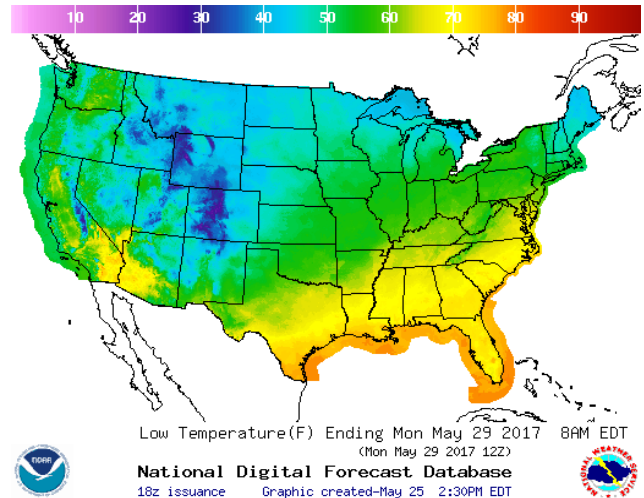


## WEATHER – HIGH / LOW TEMPERATURE SUNDAY

### HIGH Temperature

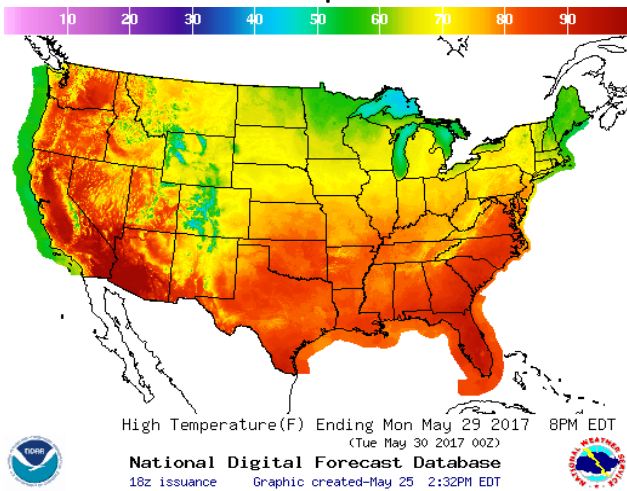


### LOW Temperature

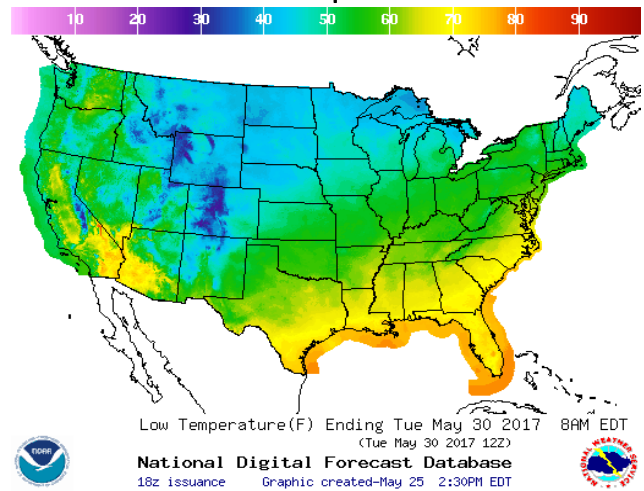


## WEATHER – HIGH / LOW TEMPERATURE MONDAY

### HIGH Temperature

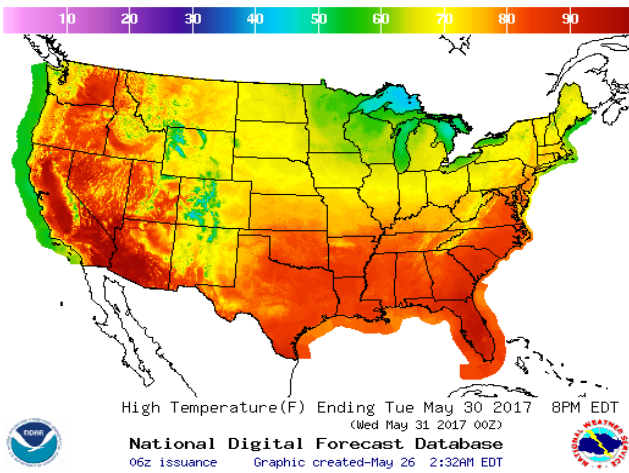


### LOW Temperature

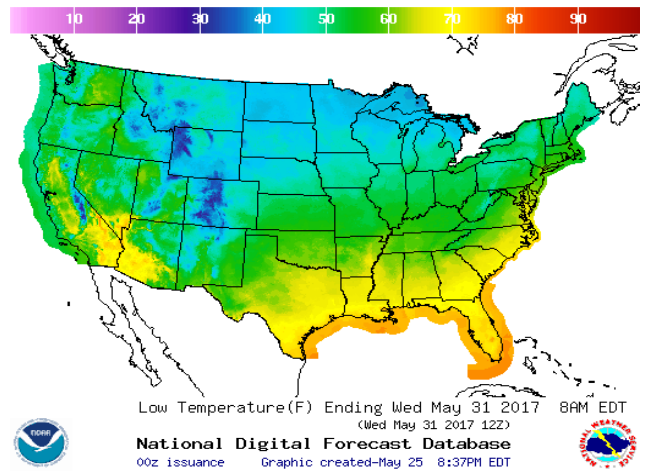


WEATHER – HIGH / LOW TEMPERATURE TUESDAY

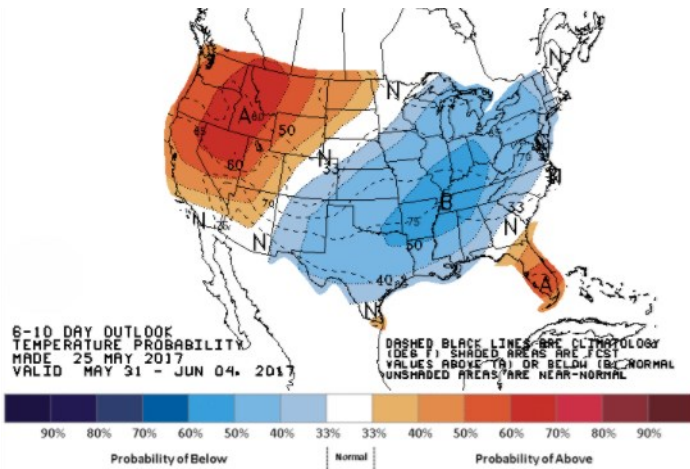
HIGH Temperature



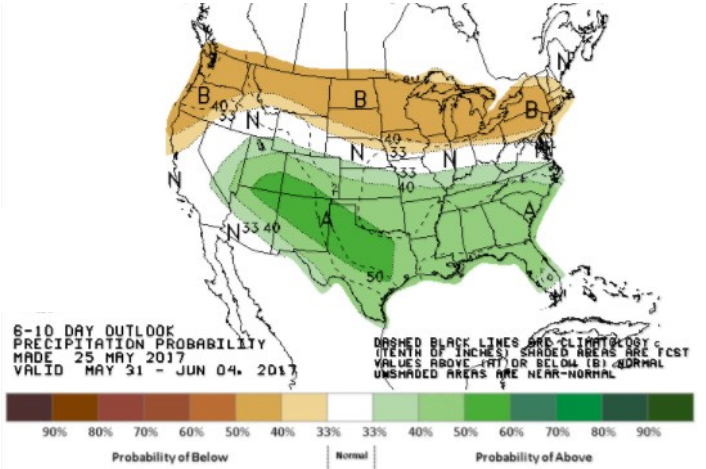
LOW Temperature



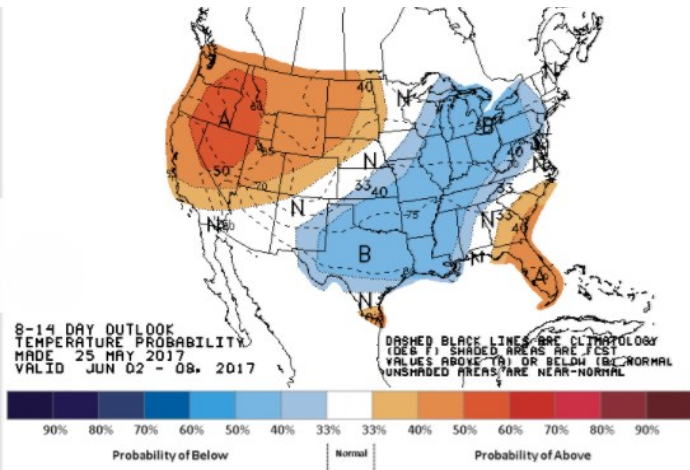
WEATHER – 6 TO 10 DAY OUTLOOK – NOAA  
Temperature



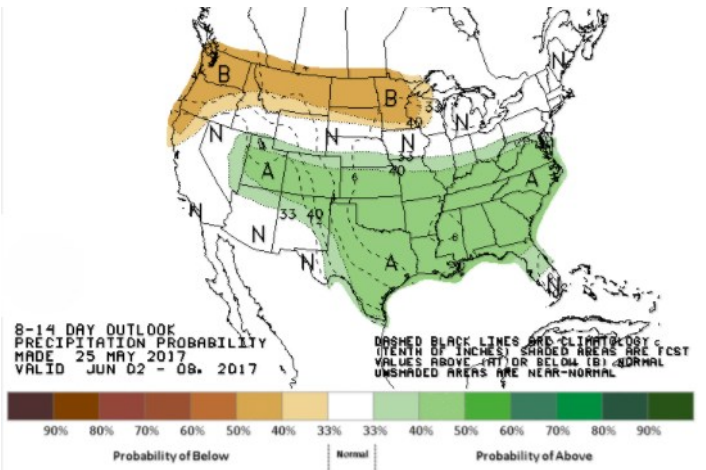
Precipitation



WEATHER – 8 TO 14 DAY OUTLOOK – NOAA  
Temperature



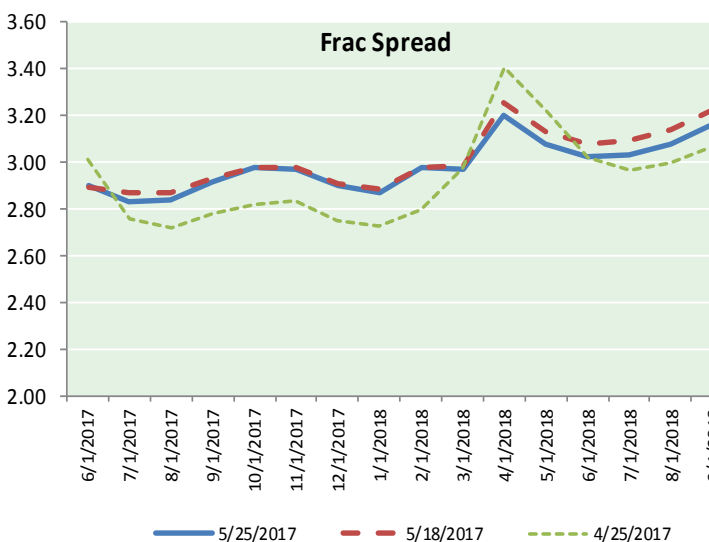
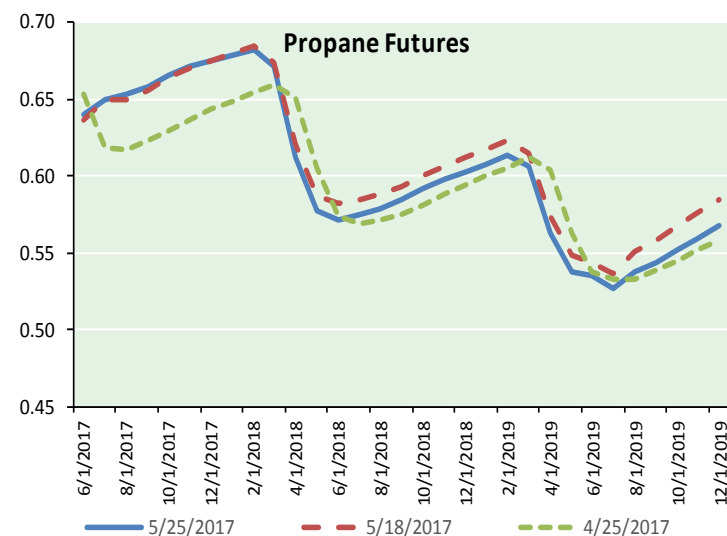
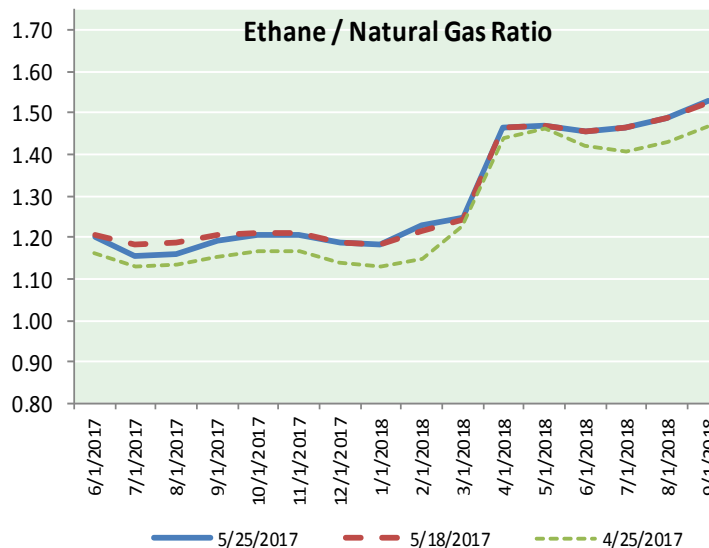
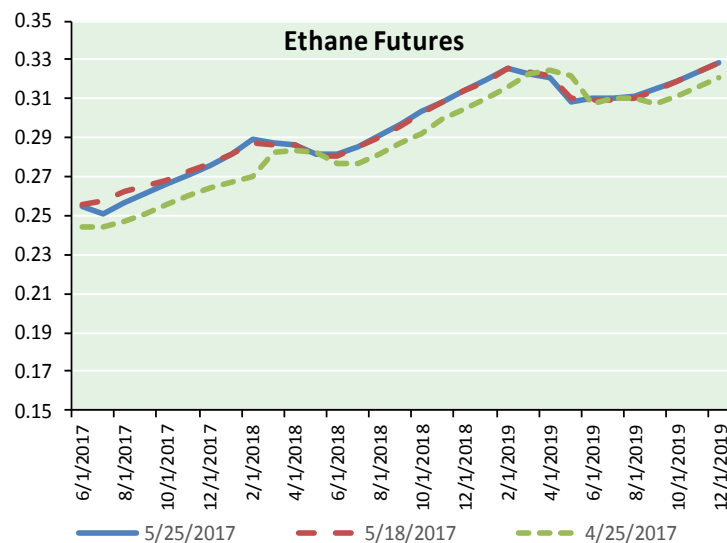
Precipitation



# NATURAL GAS NEWS



## ETHANE FUTURES, NG/ETHANE RATIO, PROPANE FUTURES, AND THE FRAC SPREAD



### CME Future Prices

#### Ethane (C2)

##### Non-LDH— Mont Belvieu

	(cents/gallon)	
Month	Close	Change
Jun-17	0.255	(0.000)
Jul-17	0.251	(0.003)
Aug-17	0.256	(0.003)
Sep-17	0.261	(0.003)
Oct-17	0.267	(0.003)
Nov-17	0.271	(0.003)
Dec-17	0.276	(0.003)
Jan-18	0.281	(0.003)
Feb-18	0.289	(0.003)
Mar-18	0.288	(0.003)
Apr-18	0.286	(0.003)
May-18	0.281	(0.003)

1YR Strip 0.272 (0.003)

### CME Future Prices

#### Propane (C3)

##### Non-LDH— Mont Belvieu

	(cents/gallon)	
Month	Close	Change
Jun-17	0.640	(0.002)
Jul-17	0.650	(0.011)
Aug-17	0.653	(0.012)
Sep-17	0.658	(0.012)
Oct-17	0.666	(0.013)
Nov-17	0.671	(0.012)
Dec-17	0.676	(0.012)
Jan-18	0.679	(0.012)
Feb-18	0.683	(0.013)
Mar-18	0.671	(0.013)
Apr-18	0.613	(0.016)
May-18	0.578	(0.016)

1YR Strip 0.653 (0.012)

# NATURAL GAS NEWS



## Prompt WTI (CL) Crude Daily Sentiment

**BEARISH**



RESISTANCE  
50.20 & 51.12  
SUPPORT  
48.74 & 47.57

### FOLLOW US ON TWITTER:



@MPG\_NatGasNews

## NYMEX Brent (BZ)

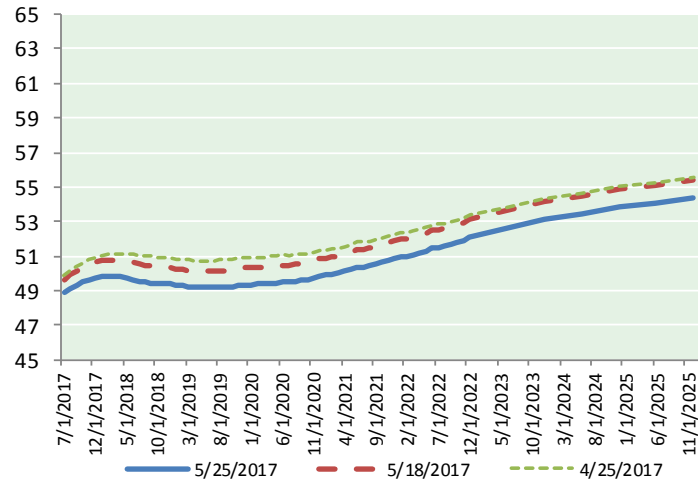
### Futures

Month	Close	Change
Jul-17	51.46	(2.50)
Aug-17	51.77	(2.47)
Sep-17	52.00	(2.45)
Oct-17	52.17	(2.41)
Nov-17	52.31	(2.35)
Dec-17	52.41	(2.30)
Jan-18	52.47	(2.24)
Feb-18	52.47	(2.19)
Mar-18	52.44	(2.15)
Apr-18	52.40	(2.10)
May-18	52.33	(2.06)
Jun-18	52.25	(2.02)
Jul-18	52.20	(1.98)
Aug-18	52.16	(1.95)
Sep-18	52.11	(1.91)
Oct-18	52.04	(1.86)
Nov-18	51.99	(1.81)
Dec-18	51.96	(1.76)
Jan-19	51.94	(1.74)
Feb-19	51.94	(1.70)
Mar-19	51.95	(1.67)
Apr-19	51.97	(1.65)
May-19	51.97	(1.61)
Jun-19	51.95	(1.57)
1YR Strip 2017	52.21	(2.27)
5YR Strip	52.02	(2.41)
5YR Strip	52.56	(1.56)

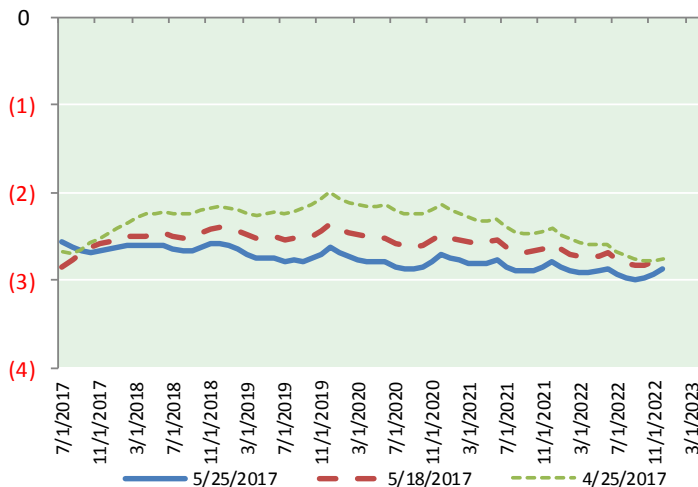
## BRENT CRUDE FORWARD CURVE



## WTI CRUDE FORWARD CURVE



## WTI-BRENT SPREAD



## FRAC Spread

### Specifications

Ethane :	42%	66,500 btu/g
Propane :	28%	90,830 btu/g
Butane :	11%	102,916 btu/g
Iso-Butane :	6%	98,935 btu/g
Natural Gasoline :	13%	115,021 btu/g

## Prompt NGL Futures

### (\$/gallon)

	Jun-17	Close	Change
Butane	0.776	(0.003)	
Iso-Butane	0.759	(0.002)	
Nat Gasoline	1.073	(0.007)	

## NYMEX WTI (CL) Futures

Month	Close	Change
Jul-17	48.90	(2.46)
Aug-17	49.14	(2.45)
Sep-17	49.33	(2.43)
Oct-17	49.48	(2.41)
Nov-17	49.64	(2.37)
Dec-17	49.76	(2.33)
Jan-18	49.84	(2.28)
Feb-18	49.86	(2.23)
Mar-18	49.84	(2.18)
Apr-18	49.80	(2.13)
May-18	49.73	(2.09)
Jun-18	49.65	(2.06)
Jul-18	49.56	(2.04)
Aug-18	49.50	(2.00)
Sep-18	49.45	(1.96)
Oct-18	49.42	(1.91)
Nov-18	49.40	(1.87)
Dec-18	49.38	(1.83)
Jan-19	49.33	(1.80)
Feb-19	49.29	(1.76)
Mar-19	49.25	(1.73)
Apr-19	49.23	(1.70)
May-19	49.22	(1.67)
Jun-19	49.21	(1.64)
1YR Strip 2017	49.58	(2.29)
5YR Strip	49.38	(2.41)
5YR Strip	49.81	(1.59)