

NATURAL GAS



MAY 9, 2017

Prior Day's NYMEX

Jun-17 Contract (CT)



NYMEX NG Futures

Month	Close	Change
Jun-17	3.172	(0.094)
Jul-17	3.257	(0.093)
Aug-17	3.291	(0.091)
Sep-17	3.279	(0.090)
Oct-17	3.302	(0.087)
Nov-17	3.355	(0.086)
Dec-17	3.478	(0.081)
Jan-18	3.552	(0.079)
Feb-18	3.519	(0.076)
Mar-18	3.435	(0.070)
Apr-18	2.917	(0.032)
May-18	2.859	(0.028)
Jun-18	2.886	(0.027)
Jul-18	2.913	(0.026)
Aug-18	2.919	(0.026)
Sep-18	2.894	(0.026)
Oct-18	2.910	(0.027)
Nov-18	2.960	(0.026)
Dec-18	3.095	(0.026)
Jan-19	3.188	(0.026)
Feb-19	3.171	(0.024)
Mar-19	3.102	(0.023)
Apr-19	2.719	(0.026)
May-19	2.677	(0.026)
1YR Strip	3.285	(0.076)
2017	3.305	(0.089)
5YR Strip	2.974	(0.036)

IN THE NEWS

Tokyo Gas takes a stake in Castleton oil and gas unit — The Financial Times reports: Tokyo Gas acquired a 30 per cent equity interest in Castleton Resources, a unit of Castleton Commodities that owns more than 160,000 net acres in eastern Texas with net gas production of 238m cubic feet equivalent per day,

- Tokyo Gas takes a stake in Castleton oil and gas unit
- Natural gas prices decrease across Texas

the Japanese company said on Monday. High quality global journalism requires investment. Castleton Resources aims to develop assets in the Haynesville shale region straddling Texas and Louisiana. Once one of the most prolific areas for shale gas output, the Haynesville's volumes have declined in the face of low gas prices. Greater demand could come from exports of liquefied natural gas through ports being built on the nearby Gulf of Mexico coast, including to Japan. Shunjiro Yamashita, chief executive of Tokyo Gas America, called the Gulf coast area "strategically important for Tokyo Gas." For more on this story visit ft.com or click the following link <http://on.ft.com/2qmhsUS>

Natural gas prices decrease across Texas — KFOX 14 Natural gas prices across Texas have tumbled recently, and you can blame the state of California for it. The state of California is now utilizing hydroelectric power more than they have in previous years, per the California Energy Commission. Hydroelectric power is energy generated by water, through water mills, dams, and steam. The surplus in natural gas across the state has led to decreasing natural gas prices to companies that purchase the gas. Since the state is more focused on created clean renewable energy with their new snowpack, it means the state is purchasing less natural gas from the state of Texas. And that's led to a surplus, affecting customers right here in El Paso. Texas Gas Service, the primary provider of natural gas to over 600,000 Texans, purchases the gas for their customers, and passes the cost of gas directly along, making no profit along the way. For more visit kfoxtv.com or click the following link <http://bit.ly/2pZAviY>

12 MONTH CANDLESTICK (WEEKLY)



Prompt Natural Gas (NG) Daily Sentiment

BULLISH



RESISTANCE
3.25 & 3.32
SUPPORT
3.12 & 3.07

Trading Summary

NATURAL GAS

Futures	Close	Change
NG	3.172	(0.094)
Volume	453,926	(420,929)
Open Int.	1,540,282	9,413

CRUDE AND GASOLINE

Futures	Close	Change
Crude	46.43	0.21
RBOB	1.5178	0.0132
Crude/NG	14.64	0.49

METALS

Futures	Close	Change
Gold	1,227.10	(5.10)

EQUITIES

Exchange	Close	Change
DOW	21,012.28	5.34
S&P 500	2,294.62	(104.67)

CURRENCY

Currency	Close	Change
EUR/USD	1.0954	(0.0057)
USD/CND	1.3727	0.0032

Contact Us



Mansfield Energy Corp
1025 Airport Pkwy
Gainesville, GA 30501

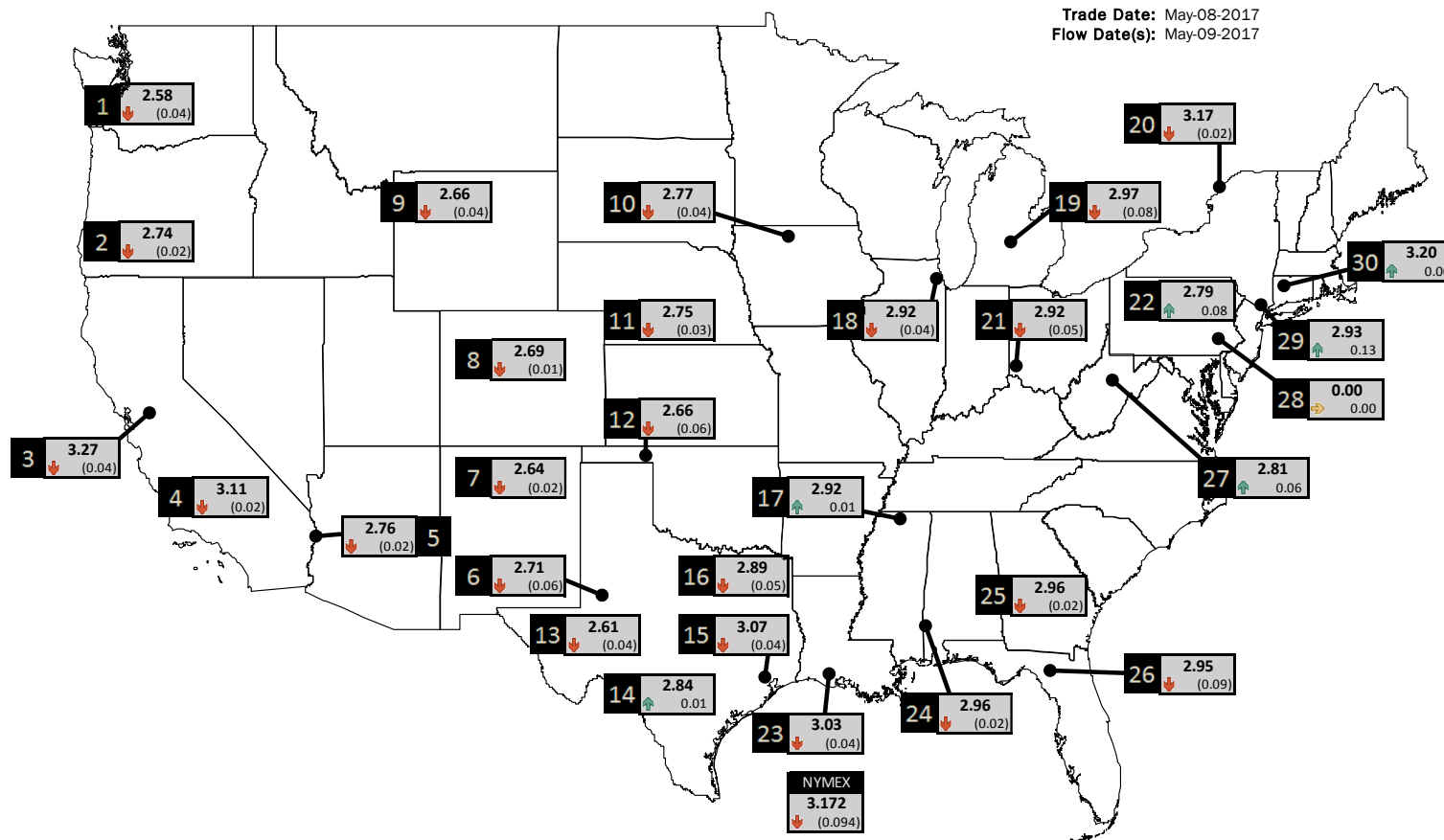
www.mansfield.energy
info@mansfieldoil.com

Phone: (800) 695-6626



NATURAL GAS NEWS

PHYSICAL SPOT NATURAL GAS PRICE MAP



ID	DAILY INDEX	PRICE	CHANGE
1	Stanfield	2.58	(0.04)
2	Malin	2.74	(0.02)
3	PG&E - Citygate	3.27	(0.04)
4	SoCal-Citygate	3.11	(0.02)
5	SoCal Border	2.76	(0.02)
6	Waha	2.71	(0.06)
7	EPSJ Blanco Pool	2.64	(0.02)
8	Opal Plant Tailgate	2.69	(0.01)
9	NWP-Wyoming	2.66	(0.04)
10	Ventura	2.77	(0.04)

ID	DAILY INDEX	PRICE	CHANGE
11	NGPL-Midcont Pool	2.75	(0.03)
12	Panhandle	2.66	(0.06)
13	EP-Permian	2.61	(0.04)
14	TGP-ZO	2.84	0.01
15	Houston Ship Channel	3.07	(0.04)
16	NGPL-TXOK	2.89	(0.05)
17	TETCO-M1 30	2.92	0.01
18	Chicago Citygates	2.92	(0.04)
19	Michcon	2.97	(0.08)
20	Iroquois (into)	3.17	(0.02)

ID	DAILY INDEX	PRICE	CHANGE
21	REX E-ANR	2.92	(0.05)
22	Leidy-Transco	2.79	0.08
23	Henry	3.03	(0.04)
24	Transco-85	2.96	(0.02)
25	Sonat-ZO South	2.96	(0.02)
26	FGT-Z3	2.95	(0.09)
27	Dominion-South	2.81	0.06
28	Transco-Z6 (non-NY)	0.00	0.00
29	Transco-Z6 (NY)	2.93	0.13
30	Iroquois-Z2	3.20	0.00

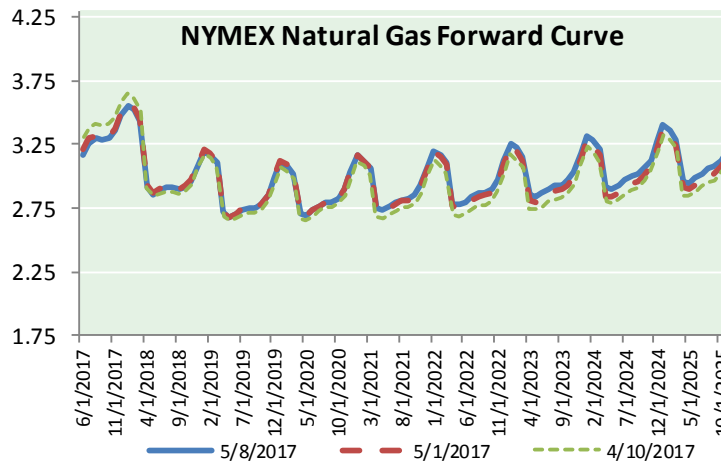
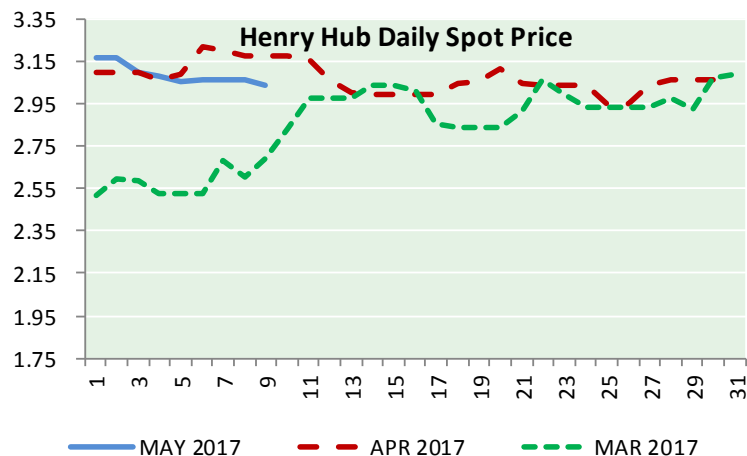
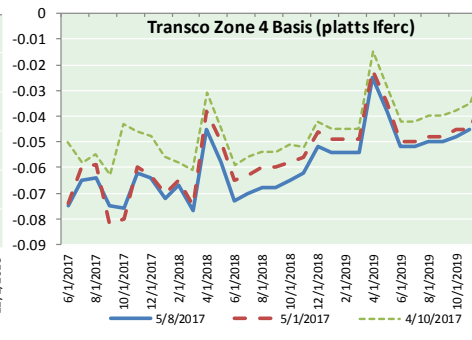
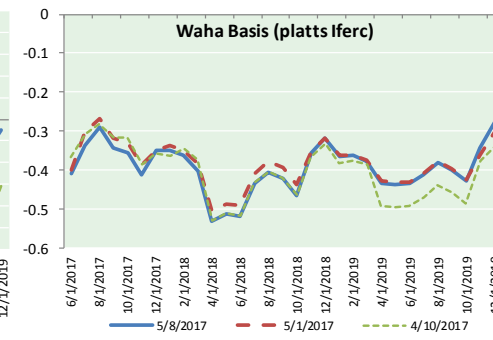
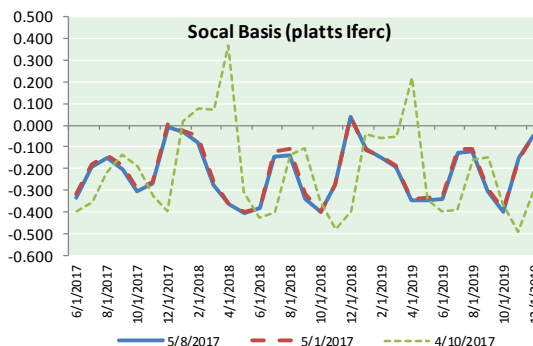
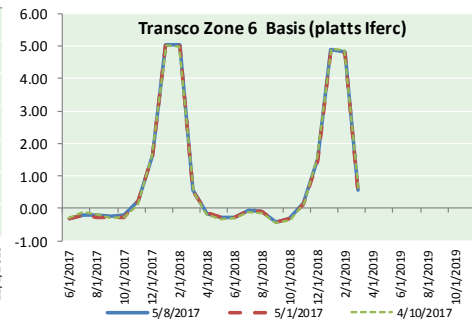
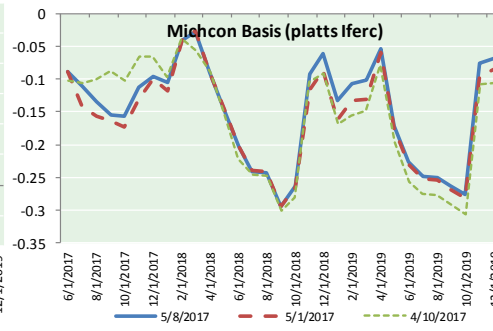
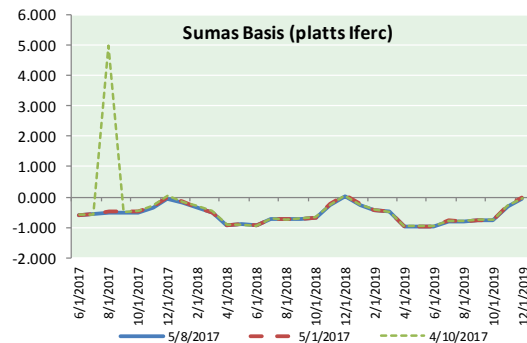
DISCLAIMER: The content herein is privileged and confidential. Content is presented for informational purposes and is a reflection of the market opinions of its authors subject to change without notice. Content is derived from sources believed to be accurate at the time of release but carries no guarantee of accuracy or completeness. Mansfield Energy Corp and its clients may or may not take positions similar or opposite those discussed herein. The reader should realize that the trading of commodities involves risk, and the reader assumes all responsibility for the risk of financial losses.





NATURAL GAS NEWS

NATURAL GAS BASIS FUTURES, HENRY HUB SPOT PRICES, AND FORWARD CURVE



CME NG Option Prices

ATM Call

Month	Strike	Close	Imp Vol
Jun-17	3.200	0.087	33.7
Jul-17	3.300	0.142	31.9
Aug-17	3.300	0.190	30.0
Sep-17	3.300	0.226	30.9
Oct-17	3.300	0.264	30.9
Nov-17	3.350	0.297	30.9
Dec-17		0.000	0.1
Jan-18	0.000		
Feb-18			
Mar-18			
Apr-18			
May-18			
Jun-18			
Jul-18			
Aug-18			
Sep-18			
Oct-18			

We're having technical issues with our Options data feed. We're working on correcting the issue.

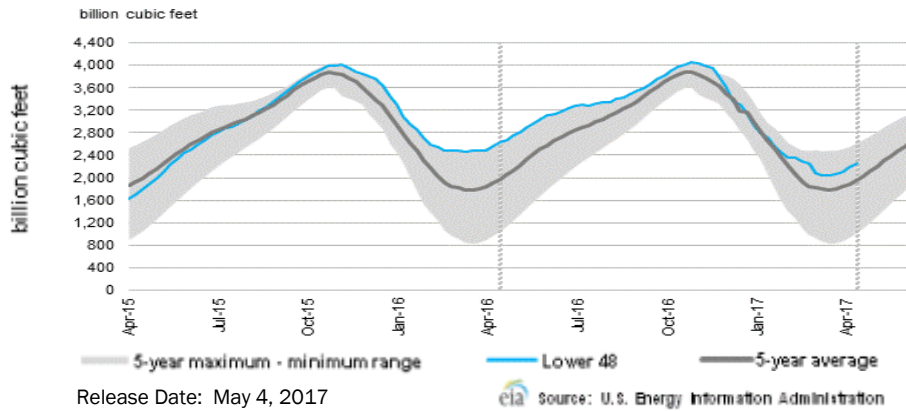
CME NG Option Prices

ATM Put

Month	Strike	Close	Imp Vol
Jun-17	3.200	0.114	41.2
Jul-17	3.300	0.185	35.6
Aug-17	3.300	0.201	33.7
Sep-17	3.300	0.247	33.7
Oct-17	3.300	0.261	32.8
Nov-17	3.350	0.290	32.8
Dec-17			
Jan-18	0.000		
Feb-18			
Mar-18			
Apr-18			
May-18			
Jun-18			
Jul-18			
Aug-18			
Sep-18			
Oct-18			



WEEKLY GAS IN UNDERGROUND STORAGE WITH 5-YR RANGE



Rig Count

Report Date: May 5, 2017

	Total	Change
US -	877	+7
CN -	82	(3)

EIA Weekly NG Storage Actual and Surveys for May 4, 2017

- Range – 50 to 70 BCF
- ECOVA – +62
- PIRA – +66
- Reuters – +61

EIA ACTUAL – +67

Total Working Gas In Storage

2,256 BCF

- +67 BCF (LAST WEEK)
- (359) BCF (LAST YEAR)
- +303 BCF (5-YR AVG)

U.S. Natural Gas Supply Gas Week 4/27-5/3

Average daily values (BCF/D):

Last Year (BCF/d)

- Dry Production – +72.3
- Total Supply – +78.5
- Last Week (BCF/d)
- Dry Production – +69.8
- Total Supply – +74.8

[NEXT REPORT ON MAY 11]

U.S. Natural Gas Demand Gas Week 4/27-5/3

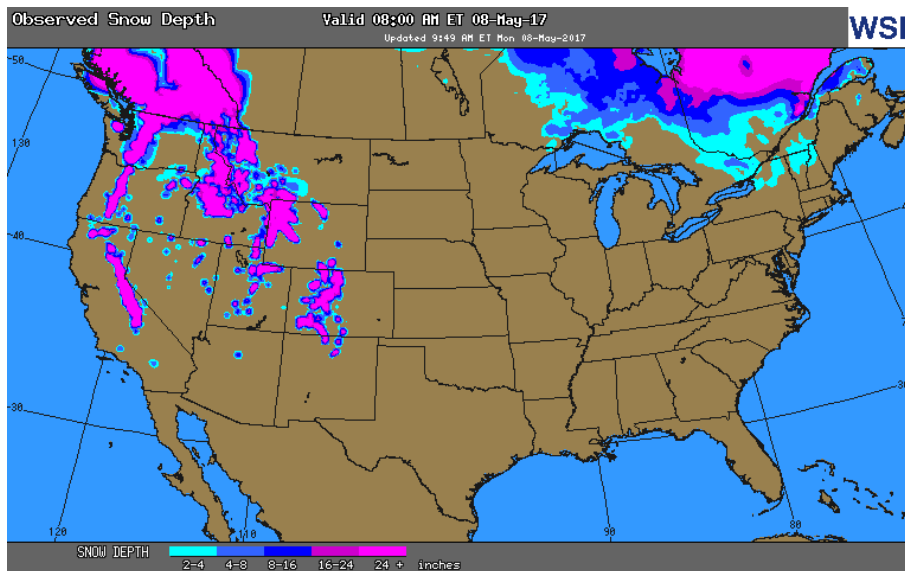
Average daily values (BCF/D):

Last Year (BCF/d)

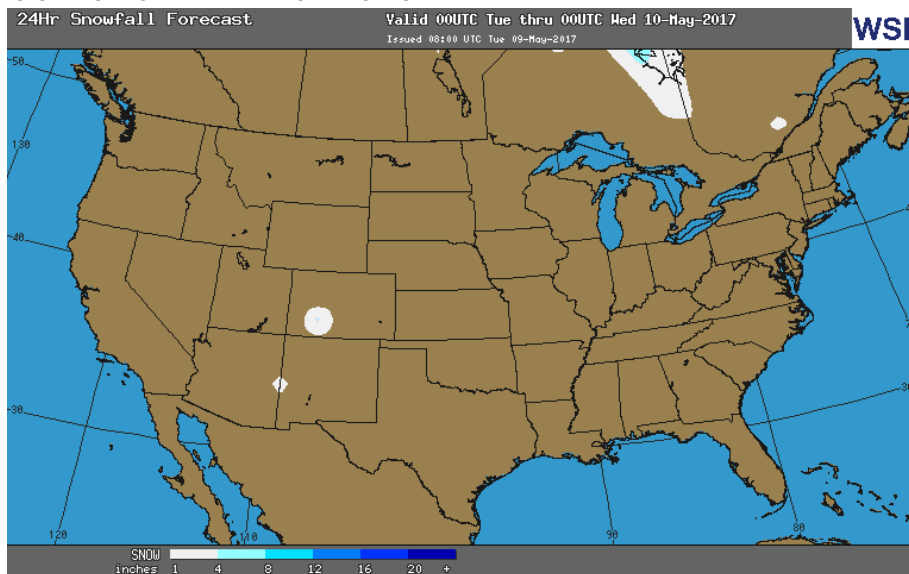
- Power – +26.1
- Total Demand – +73.0
- Last Week (BCF/d)
- Power – +22.7
- Total Demand – +67.2

[NEXT REPORT ON MAY 11]

OBSERVED SNOW DEPTH



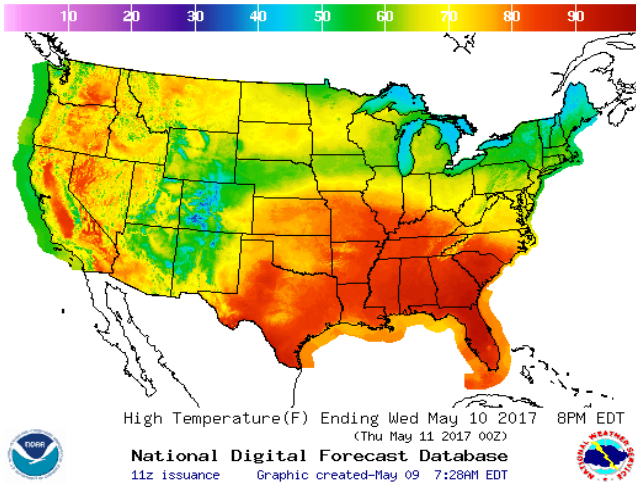
24 HOUR SNOWFALL FORECAST



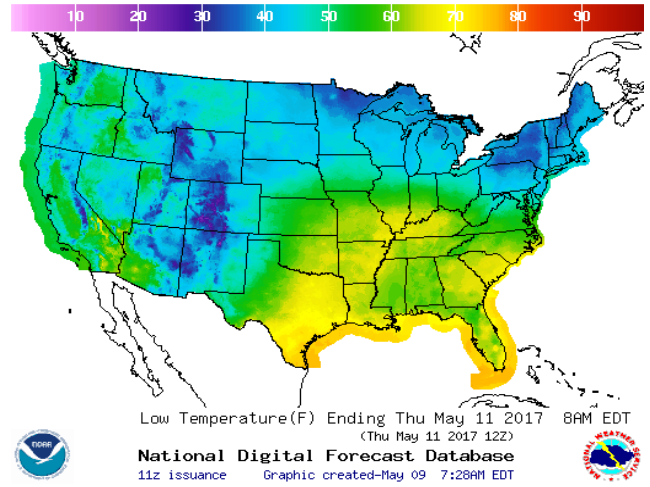
NATURAL GAS NEWS

WEATHER – HIGH / LOW TEMPERATURE TOMORROW

HIGH Temperature

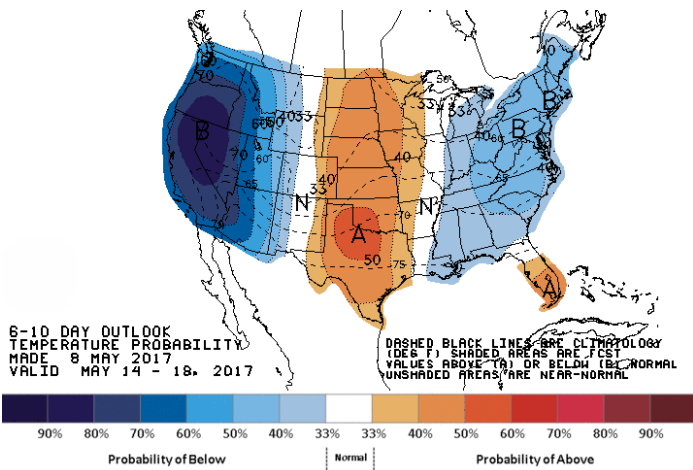


LOW Temperature

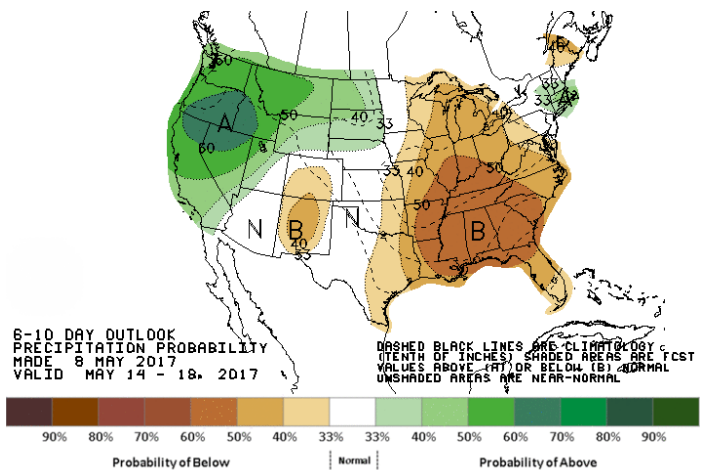


WEATHER – 6 TO 10 DAY OUTLOOK – NOAA

Temperature

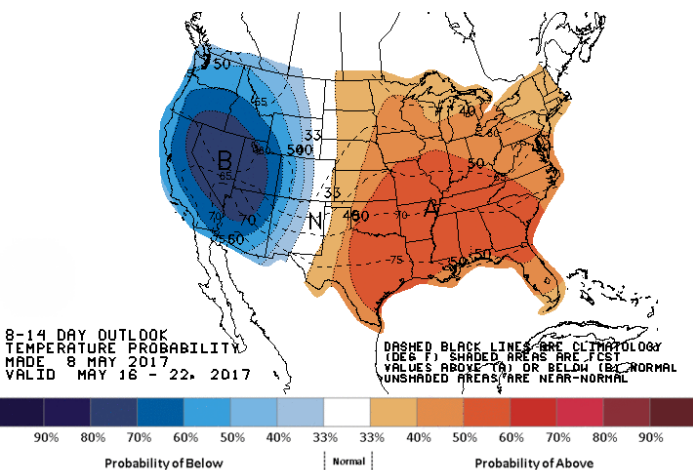


Precipitation

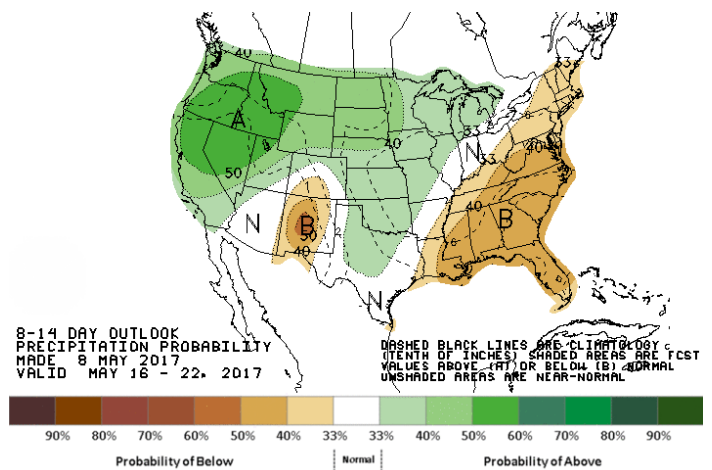


WEATHER – 8 TO 14 DAY OUTLOOK – NOAA

Temperature

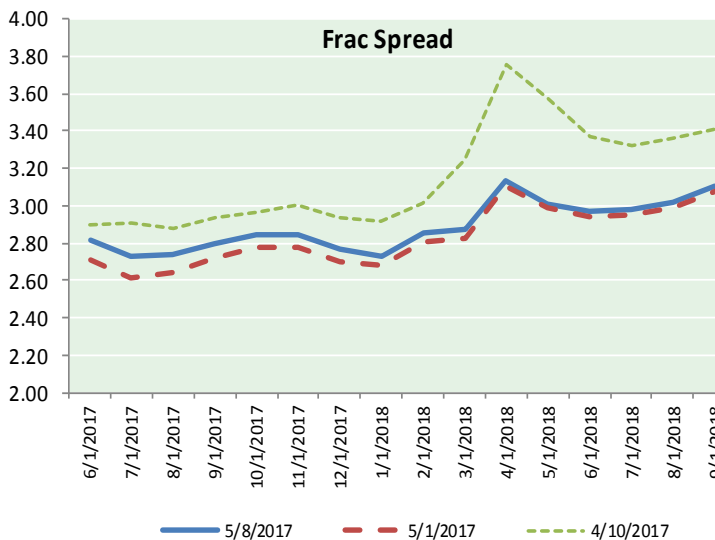
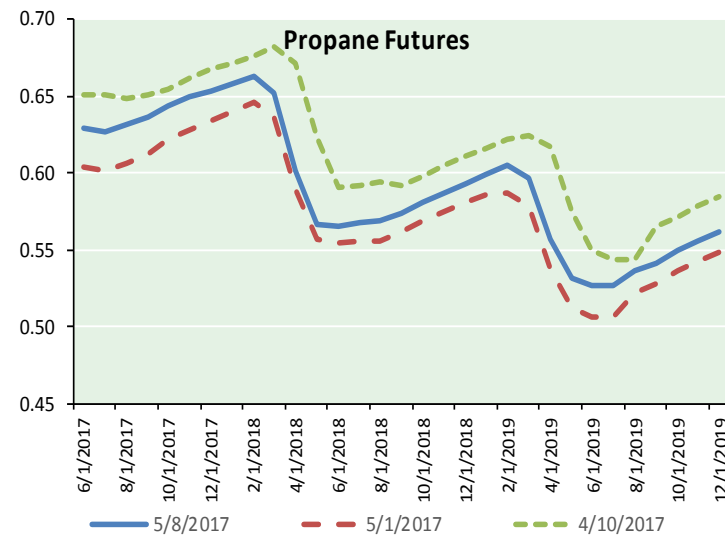
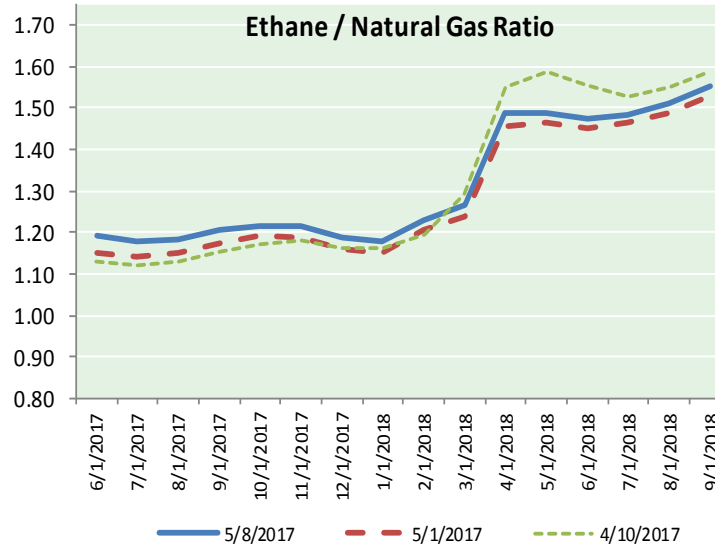
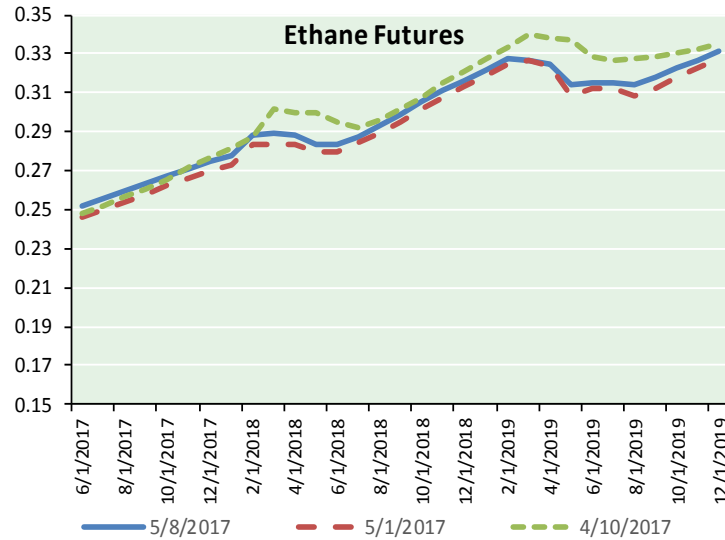


Precipitation





ETHANE FUTURES, NG/ETHANE RATIO, PROPANE FUTURES, AND THE FRAC SPREAD



CME Future Prices

Ethane (C2)

Non-LDH— Mont Belvieu

Month	Close	Change
Jun-17	0.252	(0.002)
Jul-17	0.255	(0.003)
Aug-17	0.259	(0.003)
Sep-17	0.263	(0.003)
Oct-17	0.267	(0.004)
Nov-17	0.271	(0.004)
Dec-17	0.275	(0.004)
Jan-18	0.278	(0.003)
Feb-18	0.288	(0.005)
Mar-18	0.289	(0.004)
Apr-18	0.289	(0.001)
May-18	0.283	(0.004)

1YR Strip 0.272 (0.003)

CME Future Prices

Propane (C3)

Non-LDH— Mont Belvieu

Month	Close	Change
Jun-17	0.630	0.004
Jul-17	0.628	0.004
Aug-17	0.631	0.004
Sep-17	0.636	0.004
Oct-17	0.644	0.004
Nov-17	0.649	0.004
Dec-17	0.654	0.003
Jan-18	0.658	0.002
Feb-18	0.663	0.003
Mar-18	0.653	0.002
Apr-18	0.601	0.002
May-18	0.567	0.000

1YR Strip 0.634 0.003

NATURAL GAS NEWS



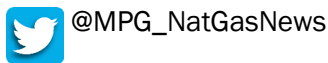
Prompt WTI (CL) Crude Daily Sentiment

BEARISH



RESISTANCE
47.03 & 47.65
SUPPORT
45.78 & 45.13

FOLLOW US ON TWITTER:

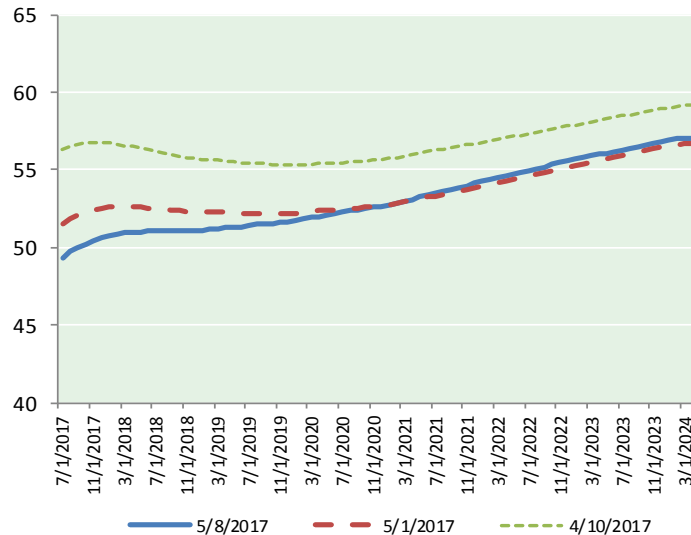


NYMEX Brent (BZ)

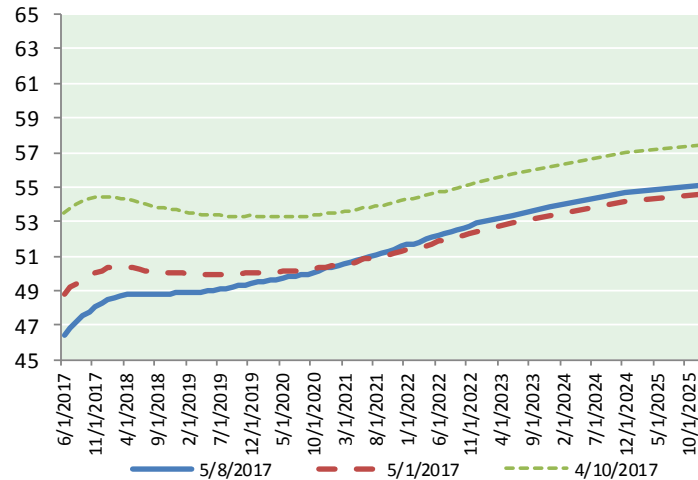
Futures

Month	Close	Change
Jul-17	49.34	0.24
Aug-17	49.75	0.27
Sep-17	50.02	0.28
Oct-17	50.24	0.29
Nov-17	50.43	0.29
Dec-17	50.61	0.31
Jan-18	50.74	0.33
Feb-18	50.84	0.34
Mar-18	50.92	0.34
Apr-18	50.97	0.34
May-18	51.01	0.34
Jun-18	51.03	0.33
Jul-18	51.07	0.32
Aug-18	51.11	0.32
Sep-18	51.11	0.31
Oct-18	51.09	0.30
Nov-18	51.08	0.30
Dec-18	51.09	0.29
Jan-19	51.12	0.28
Feb-19	51.16	0.27
Mar-19	51.20	0.25
Apr-19	51.27	0.24
May-19	51.31	0.23
Jun-19	51.35	0.22
1YR Strip 2017	50.49	0.31
5YR Strip	52.12	0.18

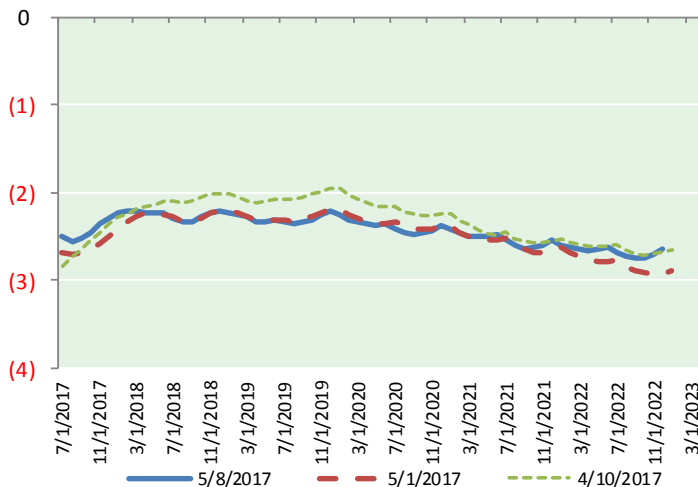
BRENT CRUDE FORWARD CURVE



WTI CRUDE FORWARD CURVE



WTI-BRENT SPREAD



FRAC Spread

Specifications

Ethane : 42%	66,500 btu/g
Propane: 28%	90,830 btu/g
Butane: 11%	102,916 btu/g
Iso-Butane: 6%	98,935 btu/g
Natural Gasoline: 13%	115,021 btu/g

Prompt NGL Futures

(\$/gallon)

	Jun-17	Close	Change
Butane	0.770	0.006	
Iso-Butane	0.758	0.003	
Nat Gasoline	1.043	0.008	

NYMEX WTI (CL) Futures

Month	Close	Change
Jun-17	46.43	0.21
Jul-17	46.84	0.24
Aug-17	47.19	0.28
Sep-17	47.50	0.30
Oct-17	47.79	0.31
Nov-17	48.07	0.32
Dec-17	48.31	0.33
Jan-18	48.50	0.33
Feb-18	48.63	0.34
Mar-18	48.71	0.34
Apr-18	48.75	0.34
May-18	48.78	0.35
Jun-18	48.79	0.36
Jul-18	48.78	0.36
Aug-18	48.77	0.36
Sep-18	48.78	0.36
Oct-18	48.81	0.36
Nov-18	48.84	0.35
Dec-18	48.88	0.35
Jan-19	48.89	0.35
Feb-19	48.90	0.34
Mar-19	48.92	0.33
Apr-19	48.94	0.32
May-19	48.98	0.31
1YR Strip 2017	47.96	0.31
5YR Strip	49.62	0.28