

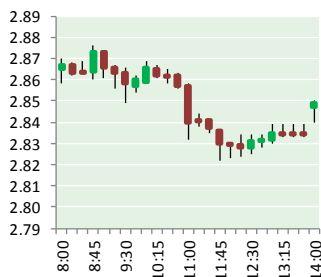
NATURAL GAS



NEWS

MARCH 7, 2019

Prior Day's NYMEX Mar-19 Contract (CT)



NYMEX NG Futures

Month	Close	Change
Apr-19	2.841	(0.043)
May-19	2.850	(0.034)
Jun-19	2.887	(0.031)
Jul-19	2.928	(0.029)
Aug-19	2.942	(0.028)
Sep-19	2.928	(0.028)
Oct-19	2.939	(0.029)
Nov-19	2.980	(0.030)
Dec-19	3.113	(0.034)
Jan-20	3.191	(0.035)
Feb-20	3.123	(0.037)
Mar-20	2.993	(0.032)
Apr-20	2.632	(0.011)
May-20	2.580	(0.011)
Jun-20	2.602	(0.011)
Jul-20	2.627	(0.011)
Aug-20	2.628	(0.011)
Sep-20	2.612	(0.009)
Oct-20	2.633	(0.009)
Nov-20	2.678	(0.009)
Dec-20	2.825	(0.008)
Jan-21	2.938	(0.008)
Feb-21	2.886	(0.002)
Mar-21	2.751	(0.002)
1YR Strip	2.976	(0.033)
2019	2.934	(0.032)
5YR Strip	2.736	(0.008)

IN THE NEWS

Natural gas trading, prices increase on colder weather, nuclear outages— S&P Global reported: North American natural gas trading has been relatively higher the last four trading sessions as colder weather and nuclear outages increased the market's reliance on gas to meet its needs. S&P Global Platts received 8,660 physical fixed-price deals for North American gas on March

- **Natural gas trading, prices increase on colder weather, nuclear outages**
- **GCC Natural Gas Market is Determined to Grow US\$ 50 Billion by 2024**

1. This was an all-time high of deals received. Platts received 7,094 deals on Monday. This was the second most deals ever received. The trend continued as Platts received 6,900 deals on Tuesday, the fourth-highest amount of deals seen. Platts received just under 6,900 deals on Thursday, according to preliminary numbers. The cash price for Pacific Gas and Electric Malin increased 22.5 cents on the day to \$3.625/MMBtu as the colder weather added upward pressure. For more on this story visit [sglobal.com](https://bit.ly/2VJend8) or click <https://bit.ly/2VJend8>

GCC Natural Gas Market is Determined to Grow US\$ 50 Billion by 2024— Market Watch reported: The GCC Natural Gas Market has been a recipient of the concerns related to energy security and climatic changes due to increasing fossil fuel consumption. In a bid to strengthen the regional sustainable energy scenario, GCC countries including Kuwait, UAE, Bahrain, Saudi Arabia, Qatar, and Oman have been planning to increase the dependency on sustainable energy sources for curbing carbon footprints. In accordance, they have apparently set long-term goals that are certain to favorably stimulate GCC natural gas industry. Growing need to cater burgeoning domestic demand, achieve self-sufficiency and reinforce energy security will drive the GCC natural gas market share. According to the 2017 BP Energy Outlook, energy consumption across the Gulf region is projected to increase by 54% by 2040, with natural gas representing over 60% of growth. For more on this story visit [marketwatch.com](https://on.mktw.net/2CaqPel) or click <https://on.mktw.net/2CaqPel>

12 MONTH CANDLESTICK (WEEKLY)



Prompt Natural Gas (NG) Daily Sentiment

BULLISH



RESISTANCE

2.88 & 2.93

SUPPORT

2.81 & 2.78

Trading Summary

NATURAL GAS

Futures	Close	Change
NG	2.841	(0.043)
Volume	299,432	(182,655)
Open Int.	1,205,580	1,811

CRUDE AND GASOLINE

Futures	Close	Change
Crude	56.22	(0.34)
RBOB	1.7890	0.0216
Crude/NG	19.79	0.18

METALS

Futures	Close	Change
Gold	1,284.90	(1.20)

EQUITIES

Exchange	Close	Change
DOW	25,396.44	(277.02)
S&P 500	-1,463.68	(23.97)

CURRENCY

Currency	Close	Change
EUR/USD	1.1228	(0.0079)
USD/CND	1.2405	0.0001

Contact Us



Mansfield Energy Corp
1025 Airport Pkwy
Gainesville, GA 30501

www.mansfield.energy

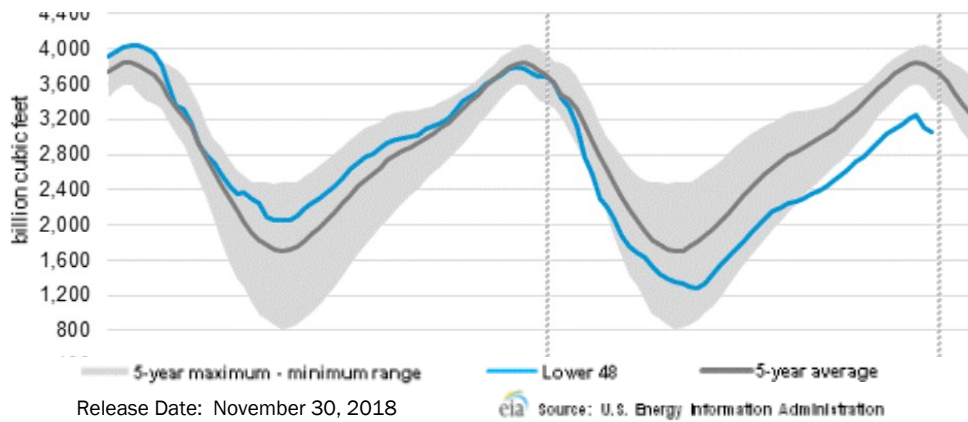
info@mansfieldoil.com

Phone: (800) 695-6626



NATURAL GAS NEWS

WEEKLY GAS IN UNDERGROUND STORAGE WITH 5-YR RANGE



Rig Count

Report Date: March 1, 2019

	Total	Change
US -	1,038	(9)
CN -	211	(1)

EIA Weekly NG Storage Actual and Surveys for March 1, 2019

Released February 28, 2019

Range — +165 to +118

PIRA— (175)

PointLogic — (169)

Citi Futures — (173)

EIA ACTUAL — (177)

Total Working Gas In Storage

1,539 BCF

(166) BCF (LAST WEEK)

(154) BCF (LAST YEAR)

(424) BCF (5-YR AVG)

U.S. Natural Gas Supply Gas Week 2/21 – 2/27

Average daily values (BCF/D):

Last Year (BCF/d)

Dry Production — +78.2

Total Supply — +84.1

Last Week (BCF/d)

Dry Production — +88.6

Total Supply — +93.6

[NEXT REPORT ON Mar 8]

U.S. Natural Gas Demand Gas Week 2/21 – 2/27

Average daily values (BCF/D):

Last Year (BCF/d)

Power — +24.1

Total Demand — +91.8

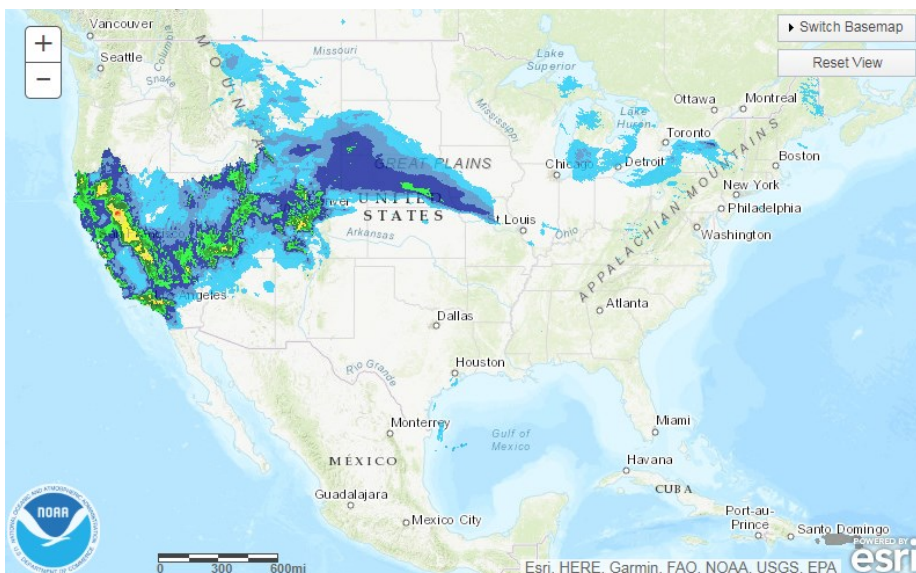
Last Week (BCF/d)

Power — +25.2

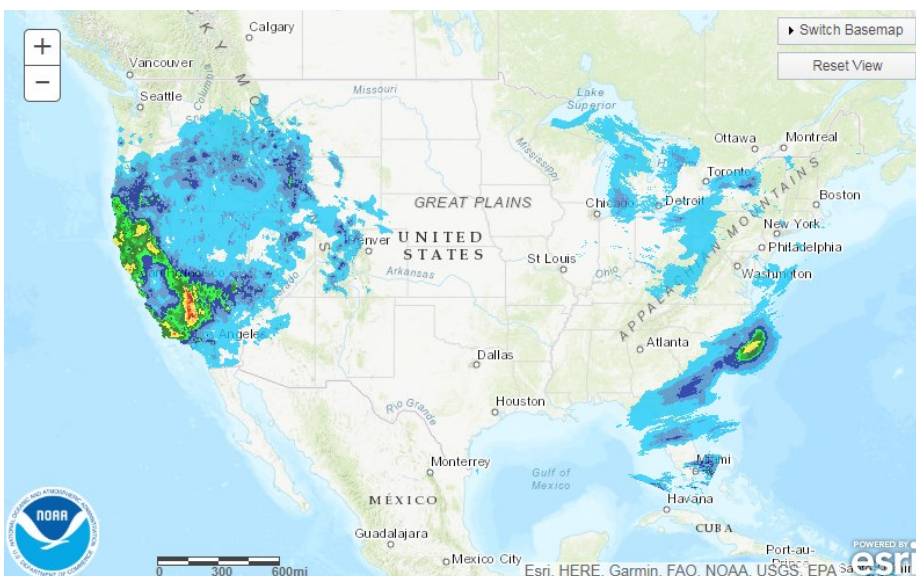
Total Demand — +109.0

[NEXT REPORT ON Mar 8]

TODAY'S PRECIPITATION



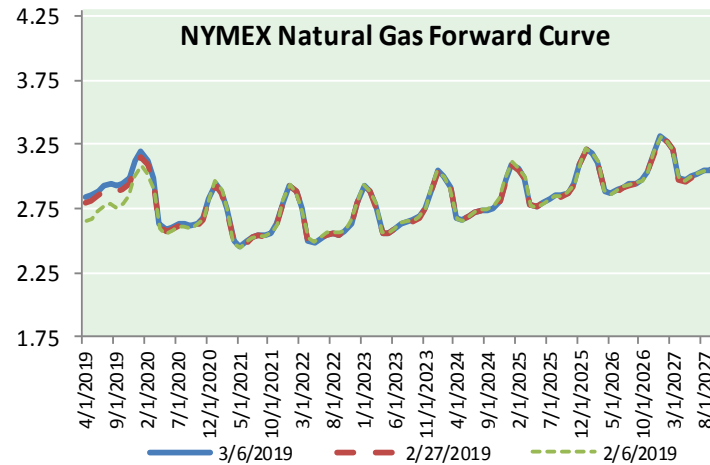
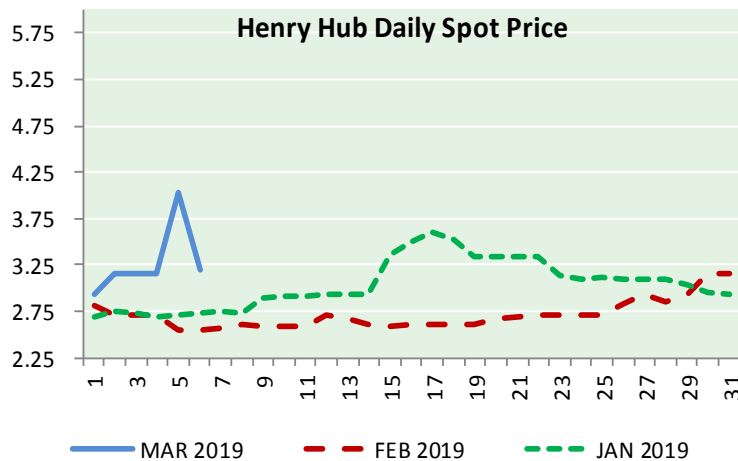
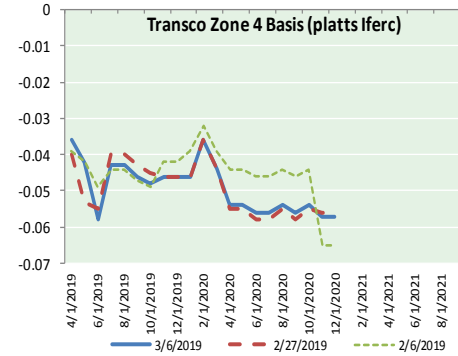
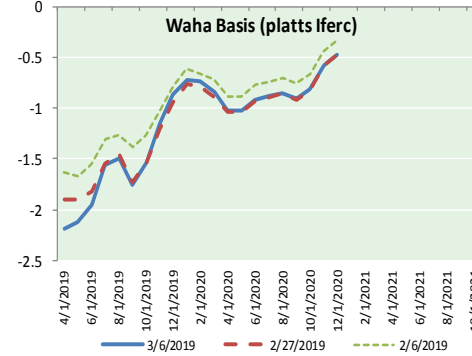
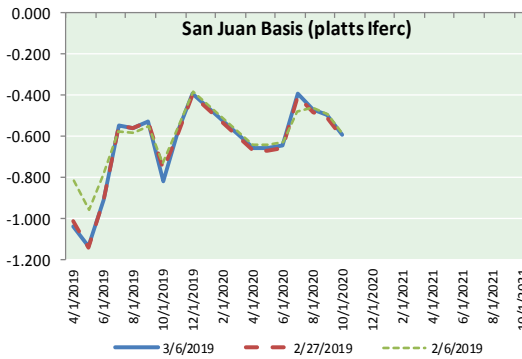
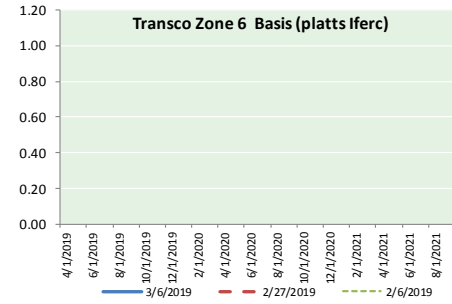
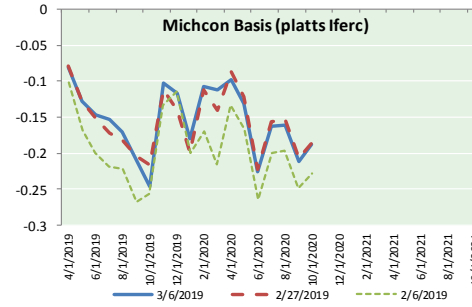
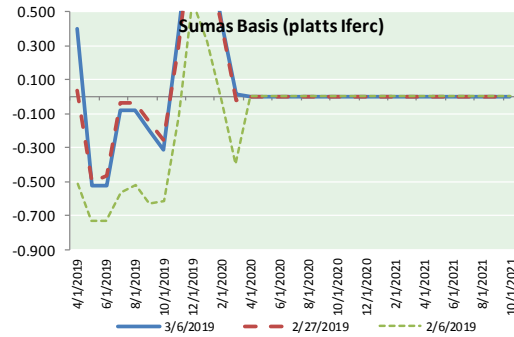
24 HOUR PRECIPITATION





NATURAL GAS NEWS

NATURAL GAS BASIS FUTURES, HENRY HUB SPOT PRICES, AND FORWARD CURVE



NYMEX WTI Delivery Month Average (\$/bbl) (Excluding Weekends and Holidays)

Month: March 2019

Day	Price	Day	Price
1	55.80	16	
2		17	
3		18	
4	56.59	19	
5	56.56	20	
6	56.22	21	
7		22	
8		23	
9		24	
10		25	
11		26	
12		27	
13		28	
14		29	
15		30	
		31	

Average (Mar) 56.2925
(through 03/06/2019)

Average (Feb) 55.0360

Average (Jan) 51.5505

CME NG Option Prices

ATM Call

Month	Strike	Close	Imp Vol
May-19			
Jun-19	2.850	0.078	18.7
Jul-19			
Aug-19			
Sep-19			

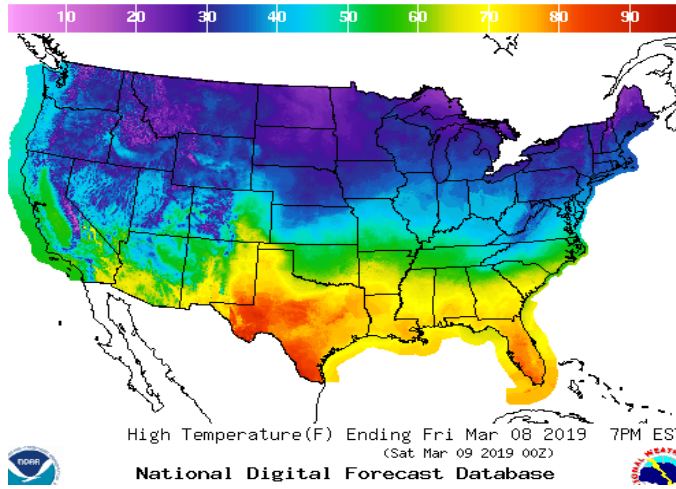
CME NG Option Prices

ATM Put

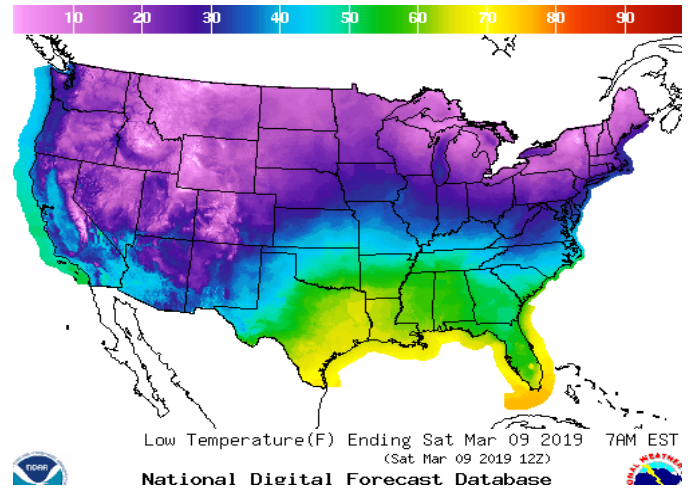
Month	Strike	Close	Imp Vol
May-19			
Jun-19	2.850	0.087	20.6
Jul-19			
Aug-19			
Sep-19			

WEATHER – HIGH / LOW TEMPERATURE TOMORROW

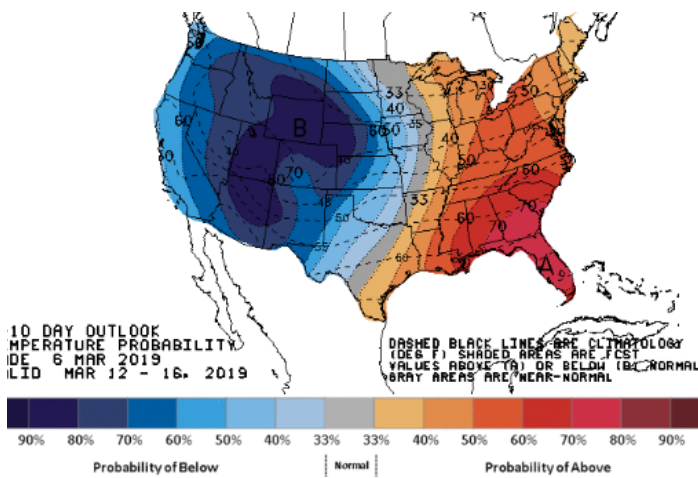
HIGH Temperature



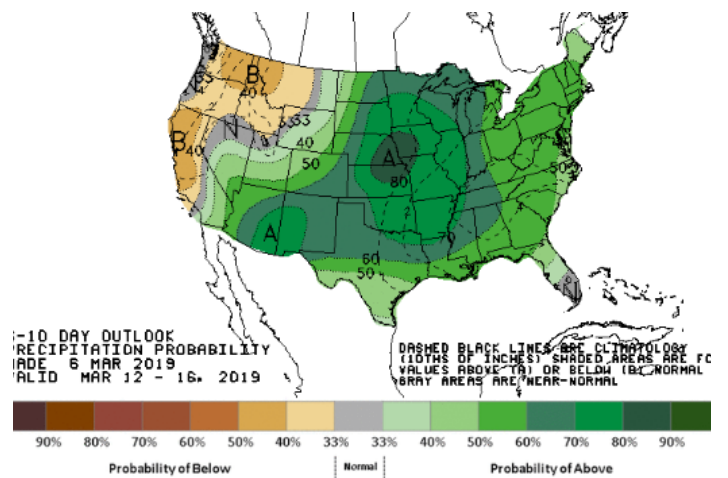
LOW Temperature



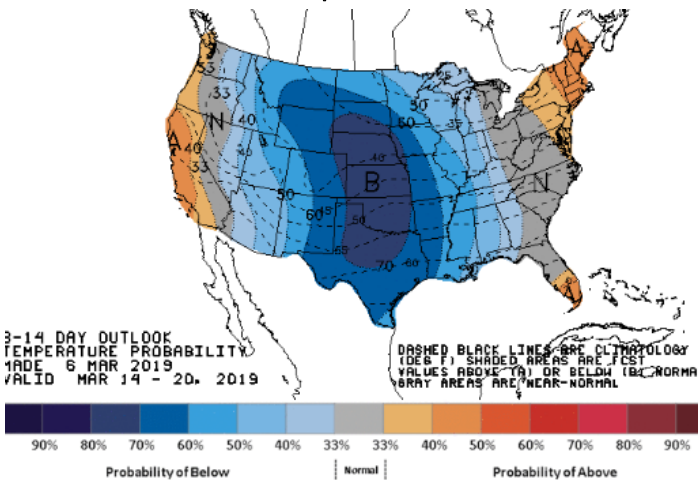
WEATHER – 6 TO 10 DAY OUTLOOK – NOAA Temperature



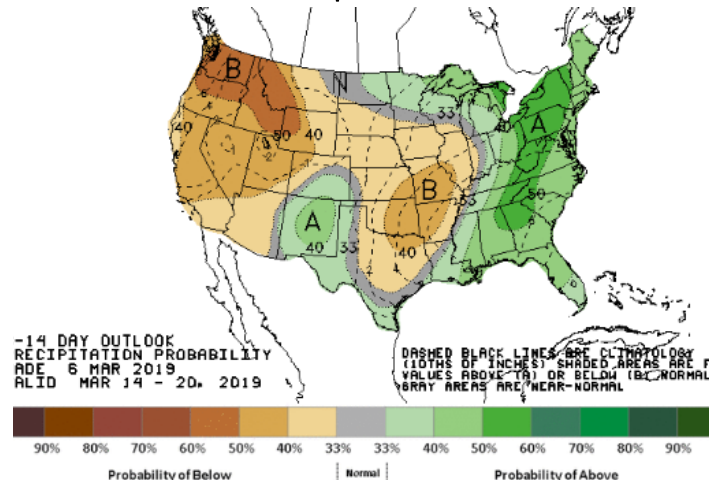
Precipitation



WEATHER – 8 TO 14 DAY OUTLOOK – NOAA Temperature

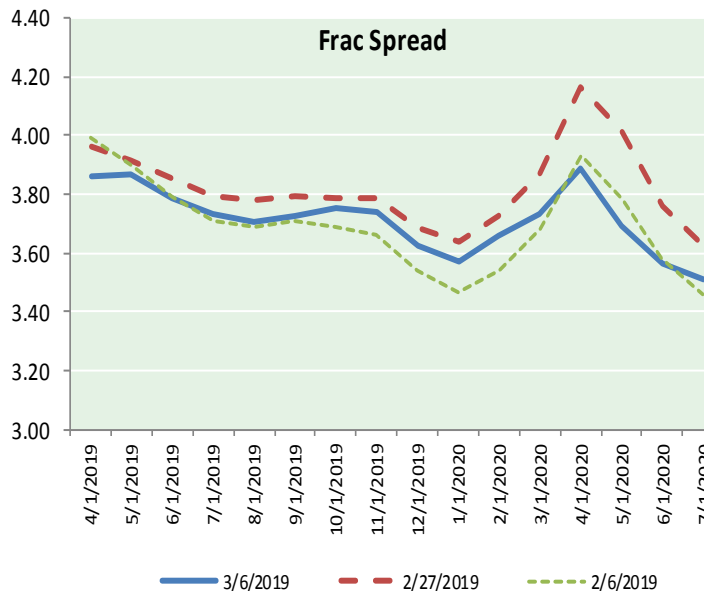
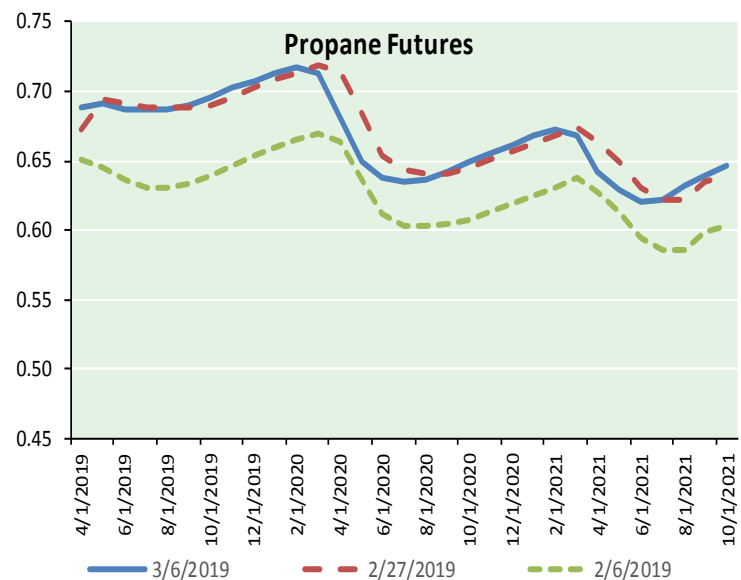
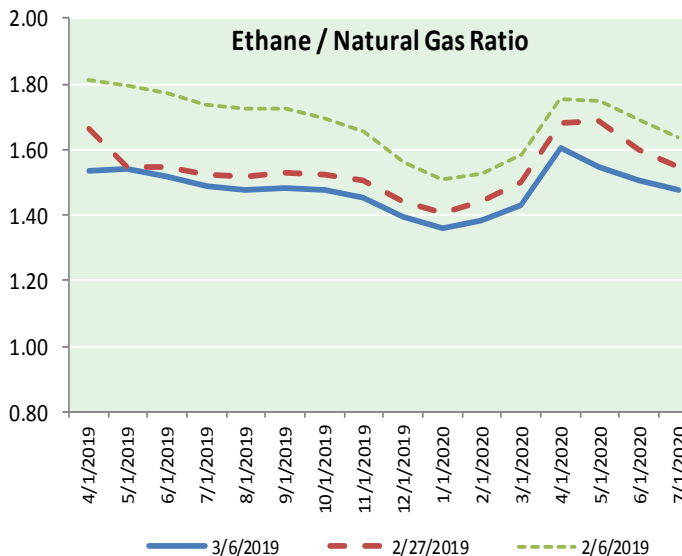
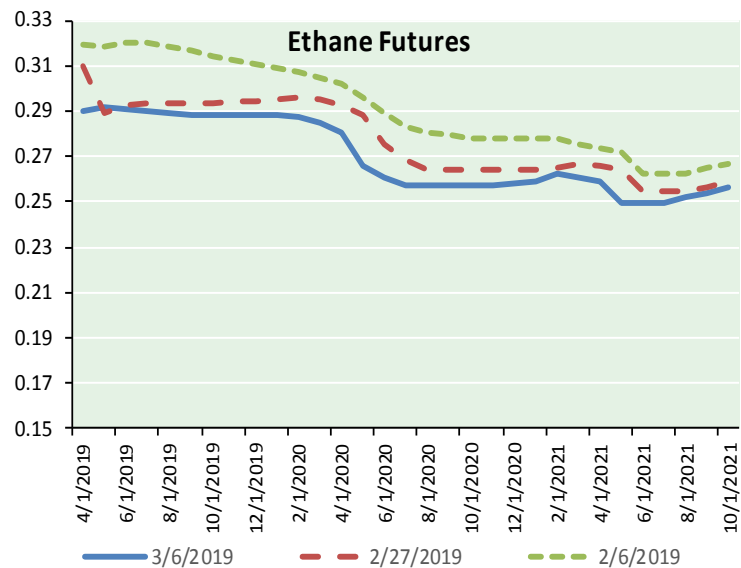


Precipitation





ETHANE FUTURES, NG/ETHANE RATIO, PROPANE FUTURES, AND THE FRAC SPREAD



CME Future Prices

Month	Close	Change
Apr-19	0.290	(0.002)
May-19	0.292	(0.002)
Jun-19	0.291	(0.002)
Jul-19	0.290	(0.002)
Aug-19	0.289	(0.002)
Sep-19	0.288	(0.002)
Oct-19	0.288	(0.002)
Nov-19	0.288	(0.002)
Dec-19	0.288	(0.002)
Jan-20	0.288	(0.002)
Feb-20	0.288	(0.001)
Mar-20	0.285	(0.001)
1YR Strip	0.289	(0.002)

CME Future Prices

Propane (C3)
Non-LDH— Mont Belvieu

Month	Close	Change
Apr-19	0.688	0.004
May-19	0.691	0.006
Jun-19	0.688	0.006
Jul-19	0.688	0.006
Aug-19	0.688	0.005
Sep-19	0.690	0.005
Oct-19	0.696	0.005
Nov-19	0.703	0.006
Dec-19	0.708	0.006
Jan-20	0.713	0.006
Feb-20	0.718	0.006
Mar-20	0.713	0.006
1YR Strip	0.698	0.006



NATURAL GAS NEWS

Prompt WTI (CL) Crude
Daily Sentiment

BULLISH



RESISTANCE
56.61 & 57.00
SUPPORT
55.63 & 55.03

FOLLOW US ON TWITTER:



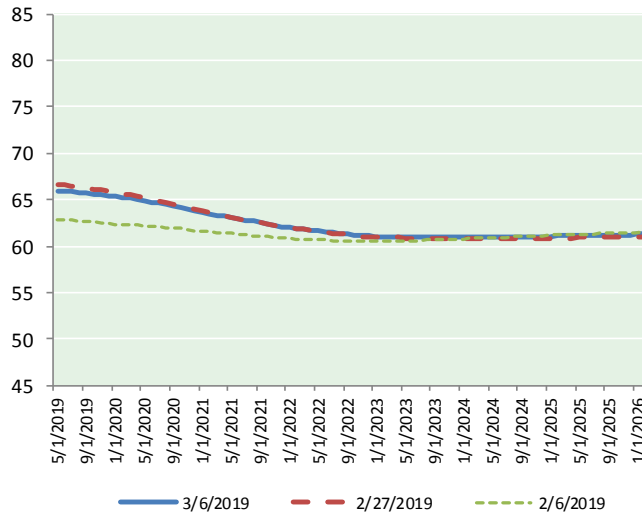
@MPG_NatGasNews

NYMEX Brent (BZ)

Futures

Month	Close	Change
Apr-19	56.22	(0.34)
May-19	56.62	(0.32)
Jun-19	57.10	(0.30)
Jul-19	57.60	(0.27)
Aug-19	58.02	(0.24)
Sep-19	58.31	(0.23)
Oct-19	58.49	(0.21)
Nov-19	58.58	(0.19)
Dec-19	58.61	(0.17)
Jan-20	58.57	(0.15)
Feb-20	58.50	(0.13)
Mar-20	58.40	(0.11)
Apr-20	58.28	(0.10)
May-20	58.13	(0.09)
Jun-20	57.99	(0.09)
Jul-20	57.81	(0.09)
Aug-20	57.65	(0.08)
Sep-20	57.49	(0.08)
Oct-20	57.34	(0.07)
Nov-20	57.21	(0.07)
Dec-20	57.09	(0.07)
Jan-21	56.90	(0.07)
Feb-21	56.72	(0.06)
Mar-21	56.55	(0.07)
1YR Strip	57.92	(0.22)
2019	57.73	(0.25)
5YR Strip	55.97	(0.10)

BRENT CRUDE FORWARD CURVE



FRAC Spread

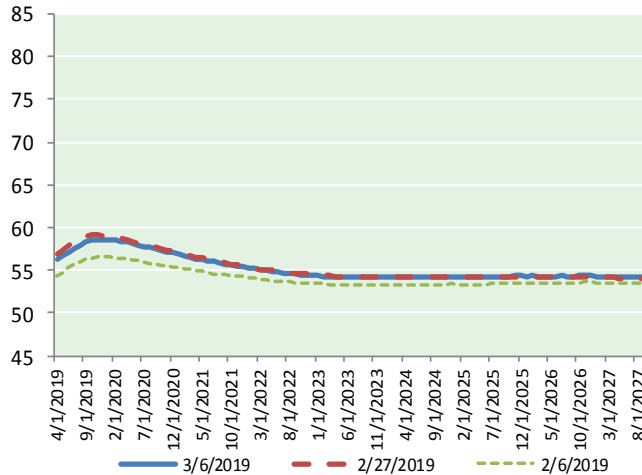
Specifications

Ethane : 42% 66,500 btu/g
Propane: 28% 90,830 btu/g
Butane: 11% 102,916 btu/g
Iso-Butane: 6% 98,935 btu/g
Natural Gasoline: 13%
115,021 btu/g

Prompt NGL Futures

	Apr-19	Close	Change
Butane	0.796	0.003	
Iso-Butane	0.826	0.000	
Nat Gasoline	1.233	0.012	

WTI CRUDE FORWARD CURVE



NYMEX WTI (CL) Futures

Month	Close	Change
May-19	65.99	0.13
Jun-19	65.97	0.05
Jul-19	65.87	0.01
Aug-19	65.80	(0.02)
Sep-19	65.72	(0.05)
Oct-19	65.64	(0.06)
Nov-19	65.56	(0.07)
Dec-19	65.46	(0.08)
Jan-20	65.36	(0.09)
Feb-20	65.26	(0.10)
Mar-20	65.15	(0.10)
Apr-20	65.03	(0.12)
May-20	64.89	(0.13)
Jun-20	64.73	(0.14)
Jul-20	64.60	(0.14)
Aug-20	64.44	(0.15)
Sep-20	64.28	(0.15)
Oct-20	64.12	(0.15)
Nov-20	63.94	(0.15)
Dec-20	63.76	(0.16)
Jan-21	63.61	(0.17)
Feb-21	63.47	(0.17)
Mar-21	63.33	(0.17)
Apr-21	63.19	(0.18)
1YR Strip	65.57	(0.04)
2019	65.75	(0.01)
5YR Strip	62.77	(0.16)

WTI-BRENT SPREAD

