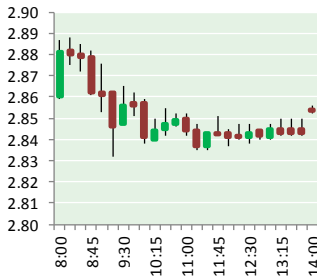


NATURAL GAS



MARCH 5, 2019

Prior Day's NYMEX Mar-19 Contract (CT)



NYMEX NG Futures

Month	Close	Change
Apr-19	2.857	(0.002)
May-19	2.857	(0.006)
Jun-19	2.895	(0.006)
Jul-19	2.937	(0.006)
Aug-19	2.951	(0.004)
Sep-19	2.938	(0.003)
Oct-19	2.953	(0.003)
Nov-19	3.001	(0.001)
Dec-19	3.143	0.001
Jan-20	3.222	0.002
Feb-20	3.159	0.003
Mar-20	3.021	0.002
Apr-20	2.640	0.007
May-20	2.586	0.007
Jun-20	2.608	0.008
Jul-20	2.633	0.009
Aug-20	2.634	0.010
Sep-20	2.616	0.012
Oct-20	2.637	0.014
Nov-20	2.679	0.013
Dec-20	2.826	0.014
Jan-21	2.939	0.012
Feb-21	2.887	0.017
Mar-21	2.751	0.017
1YR Strip	2.995	(0.002)
2019	2.948	(0.003)
5YR Strip	2.741	0.002

IN THE NEWS

\$680 million pipeline gets green light to move natural gas from Oklahoma to Gulf Coast— Houston Chronicle reported: A pipeline to move natural gas from Oklahoma to destinations along the Gulf Coast and southeastern United States got the green light from federal regulators and \$680 million in financing for construction. Working in a joint venture, Houston liquefied natural

- **\$680 million pipeline gets green light to move natural gas from Oklahoma to Gulf Coast**
- **Operator of natural gas gathering pipeline in Greene County fined**

gas company Cheniere Energy and Washington D.C. private equity firm EIG Global Energy Partners are moving forward with plans to build the 200-mile Midship Pipeline in Oklahoma. Federal Energy Regulatory Commission officials approved the 36-inch diameter natural gas pipeline on Wednesday. Cheniere and EIG issued a statement on Friday saying the two companies secured \$680 million in financing for the project and issued a notice for contractors Strike LLC, M.G. Dyess, TRC Pipeline Services and Cenergy LLC to proceed with construction. For more on this story visit [houstonchronicle.com](https://bit.ly/2ToMvhh) or click <https://bit.ly/2ToMvhh>

Operator of natural gas gathering pipeline in Greene County fined— Trib Live reported: The operator of a natural gas gathering pipeline in Greene County has been fined \$1.5 million for environmental violations related to erosion and sediment control. The state Department of Environmental Protection said Monday it had assessed the civil penalty against Rice Midstream Holdings LLC for violations that occurred on the Beta Trunk Pipeline in Aleppo and Richhill townships in 2017 and 2018. Although the pipeline is now owned by Equitrans Midstream Corp., the violations began prior to the acquisition of Rice in 2018. The Beta Trunk Pipeline is an approximately 7.5-mile gathering line within a larger Beta System that takes natural gas from several well pads to transmission facilities. Although portions of the line are in service pursuant to DEP permitting in 2017, portions remain under construction. Rice is required to use erosion and sediment control practices in its pipeline construction to prevent sediment pollution into water sources, the DEP said. For more on this story visit [triblive.com](https://bit.ly/2NJ10XZ) or click <https://bit.ly/2NJ10XZ>

12 MONTH CANDLESTICK (WEEKLY)



Prompt Natural Gas (NG) Daily Sentiment

BULLISH



RESISTANCE
2.89 & 2.92
SUPPORT
2.82 & 2.79

Trading Summary

NATURAL GAS

Futures	Close	Change
NG	2.857	(0.002)
Volume	349,186	(70,328)
Open Int.	1,187,296	10,671

CRUDE AND GASOLINE

Futures	Close	Change
Crude	56.59	0.79
RBOB	1.7490	0.0187
Crude/NG	19.81	0.29

METALS

Futures	Close	Change
Gold	1,284.80	(0.80)

EQUITIES

Exchange	Close	Change
DOW	25,819.65	(206.67)
S&P 500	-1,886.89	(10.88)

CURRENCY

Currency	Close	Change
EUR/USD	1.1328	(0.0012)
USD/CND	1.2405	0.0023

Contact Us



Mansfield Energy Corp
1025 Airport Pkwy
Gainesville, GA 30501

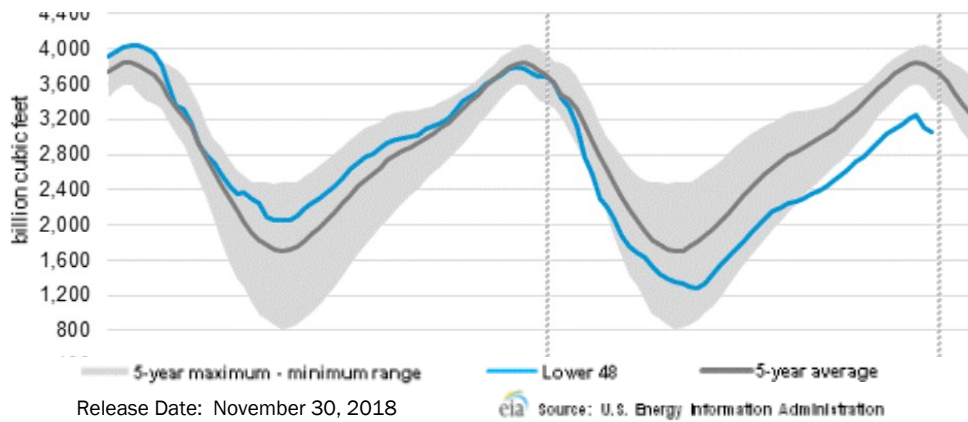
www.mansfield.energy
info@mansfieldoil.com

Phone: (800) 695-6626



NATURAL GAS NEWS

WEEKLY GAS IN UNDERGROUND STORAGE WITH 5-YR RANGE



Rig Count

Report Date: March 1, 2019

	Total	Change
US -	1,038	(9)
CN -	211	(1)

EIA Weekly NG Storage Actual and Surveys for March 1, 2019

Released February 28, 2019

Range — +165 to +118

PIRA— (175)

PointLogic — (169)

Citi Futures — (173)

EIA ACTUAL — (177)

Total Working Gas In Storage

1,539 BCF

(166) BCF (LAST WEEK)

(154) BCF (LAST YEAR)

(424) BCF (5-YR AVG)

U.S. Natural Gas Supply Gas Week 2/21 – 2/27

Average daily values (BCF/D):

Last Year (BCF/d)

Dry Production — +78.2

Total Supply — +84.1

Last Week (BCF/d)

Dry Production — +88.6

Total Supply — +93.6

[NEXT REPORT ON Mar 8]

U.S. Natural Gas Demand Gas Week 2/21 – 2/27

Average daily values (BCF/D):

Last Year (BCF/d)

Power — +24.1

Total Demand — +91.8

Last Week (BCF/d)

Power — +25.2

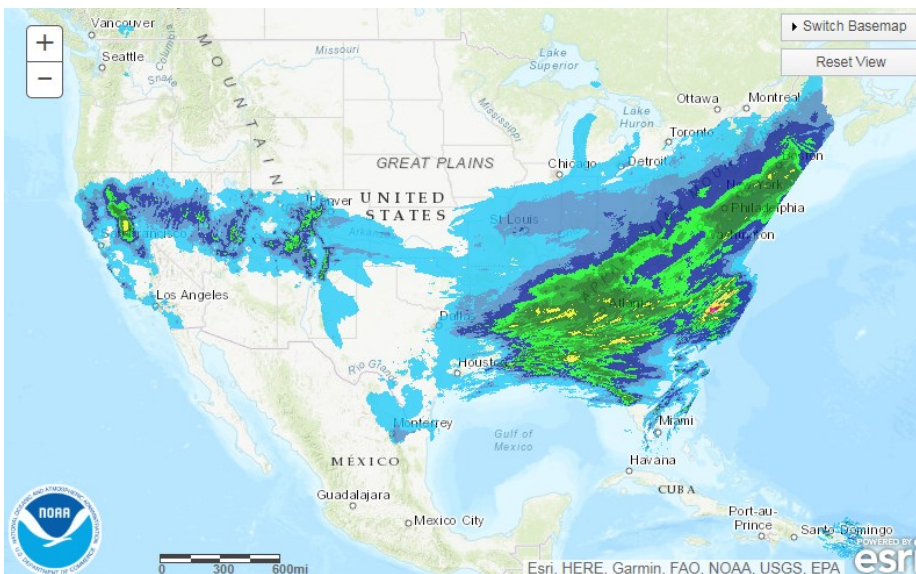
Total Demand — +109.0

[NEXT REPORT ON Mar 8]

TODAY'S PRECIPITATION



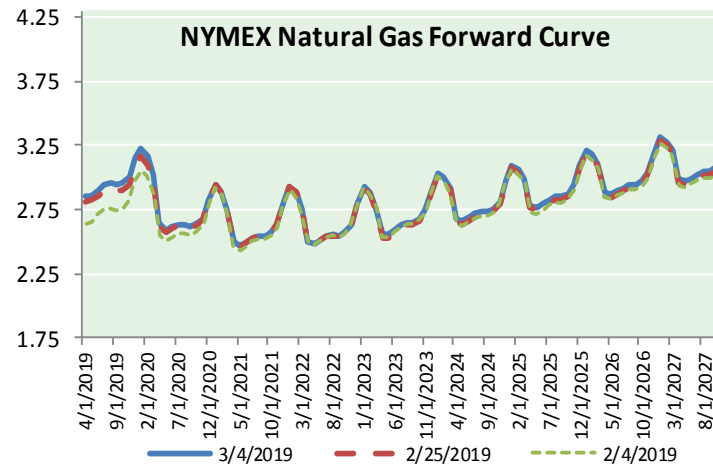
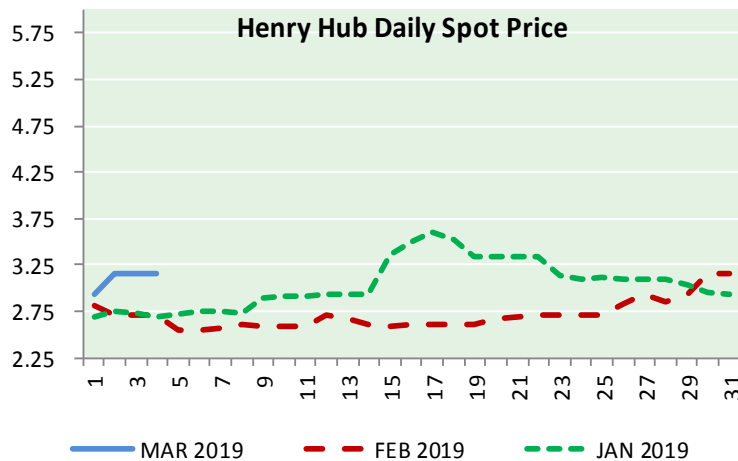
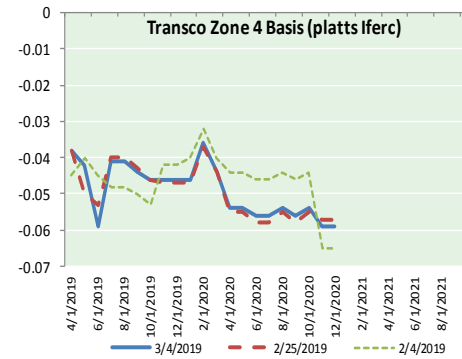
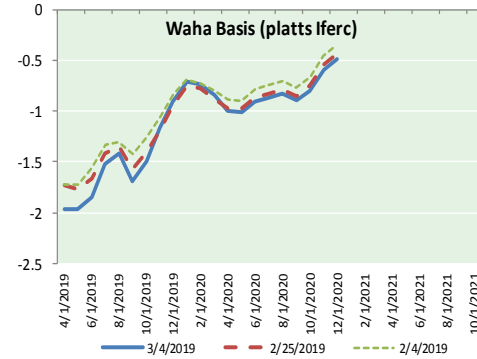
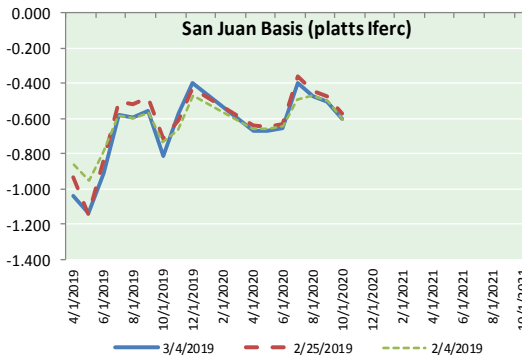
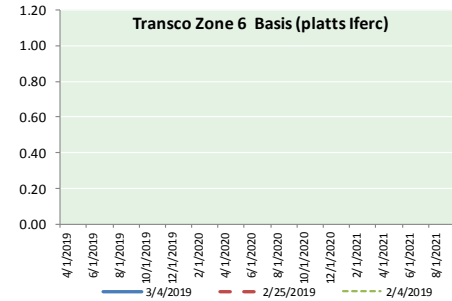
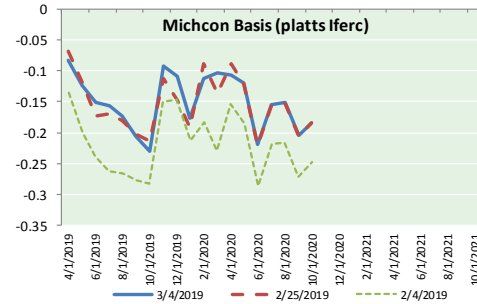
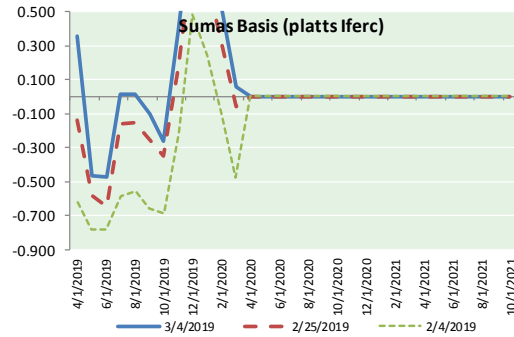
24 HOUR PRECIPITATION





NATURAL GAS NEWS

NATURAL GAS BASIS FUTURES, HENRY HUB SPOT PRICES, AND FORWARD CURVE



NYMEX WTI Delivery Month Average (\$/bbl) (Excluding Weekends and Holidays)

Month: March 2019

Day	Price	Day	Price
1	55.80	16	
2		17	
3		18	
4	56.59	19	
5		20	
6		21	
7		22	
8		23	
9		24	
10		25	
11		26	
12		27	
13		28	
14		29	
15		30	
		31	

Average (Mar) 56.1950
(through 03/04/2019)

Average (Feb) 55.0360

Average (Jan) 51.5505

CME NG Option Prices

ATM Call

Month	Strike	Close	Imp Vol
May-19			
Jun-19	2.850	0.101	22.5
Jul-19			
Aug-19			
Sep-19			

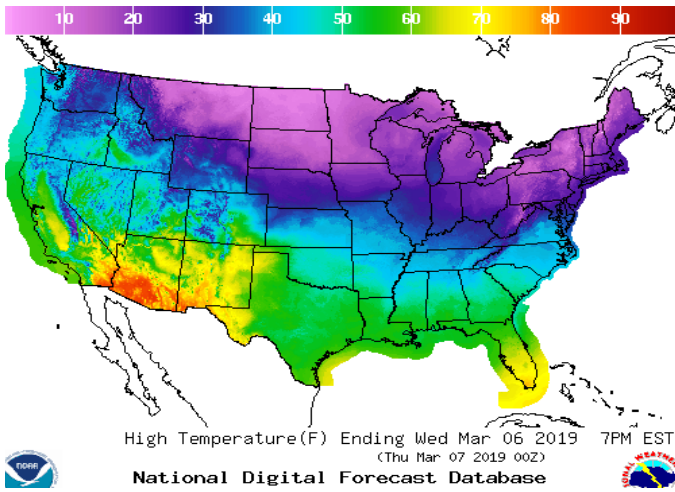
CME NG Option Prices

ATM Put

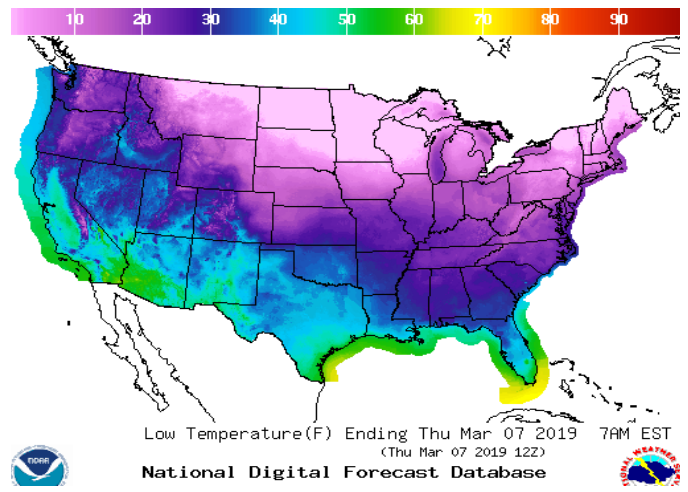
Month	Strike	Close	Imp Vol
May-19			
Jun-19	2.850	0.092	22.5
Jul-19			
Aug-19			
Sep-19			

WEATHER – HIGH / LOW TEMPERATURE TOMORROW

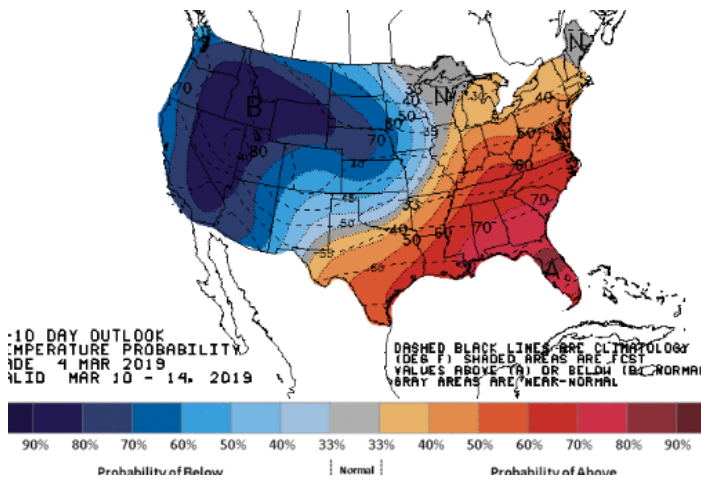
HIGH Temperature



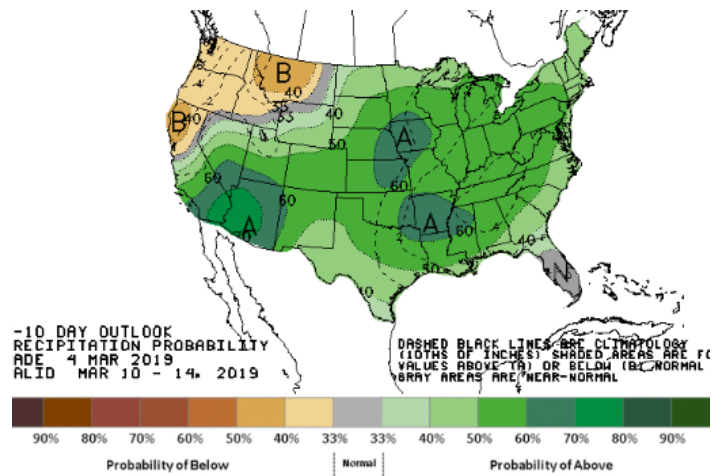
LOW Temperature



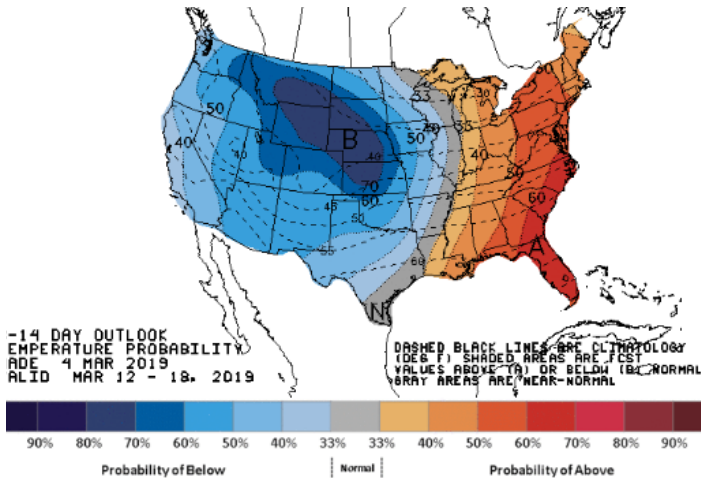
WEATHER – 6 TO 10 DAY OUTLOOK – NOAA
Temperature



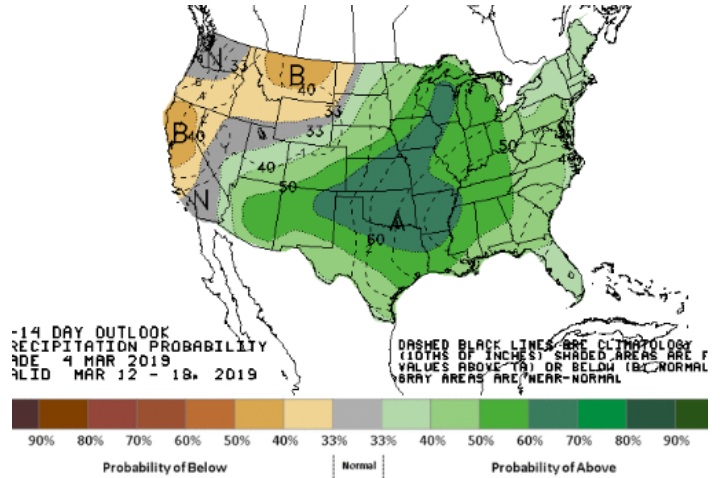
Precipitation



WEATHER – 8 TO 14 DAY OUTLOOK – NOAA
Temperature

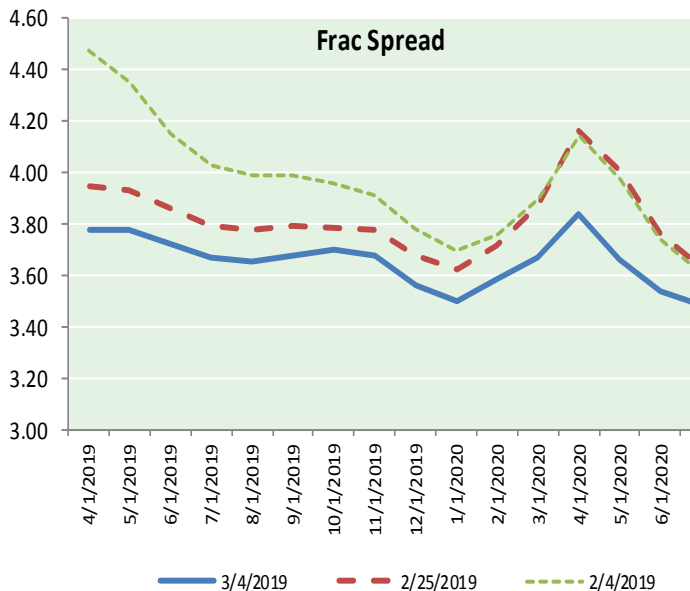
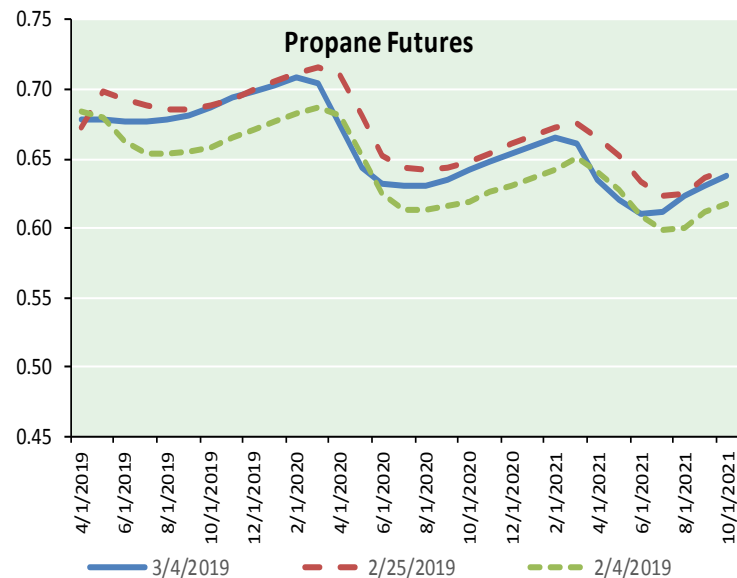
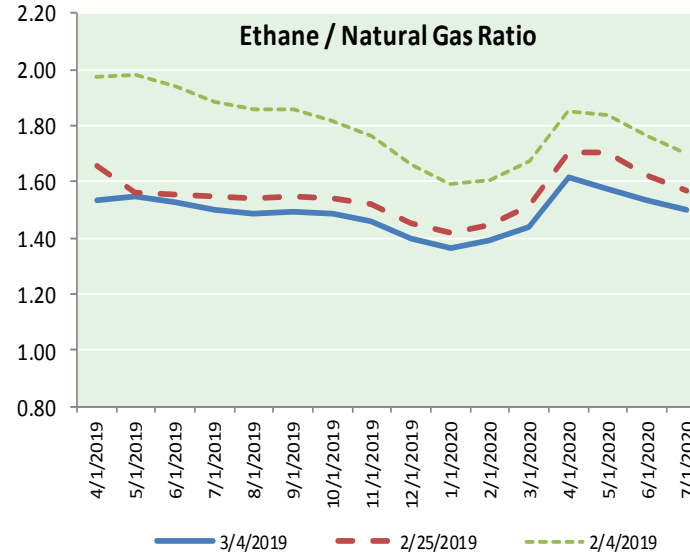
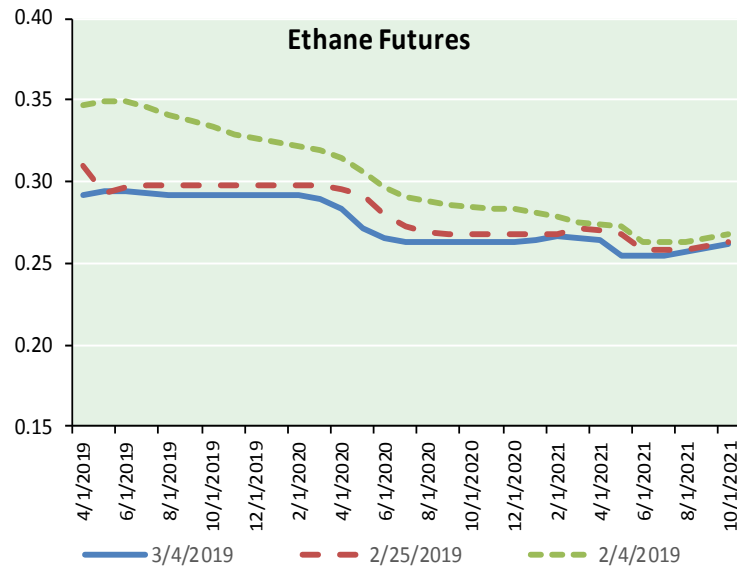


Precipitation





ETHANE FUTURES, NG/ETHANE RATIO, PROPANE FUTURES, AND THE FRAC SPREAD



CME Future Prices

Month	Close	Change
Apr-19	0.292	0.005
May-19	0.294	0.004
Jun-19	0.294	0.003
Jul-19	0.293	0.001
Aug-19	0.292	0.000
Sep-19	0.292	0.000
Oct-19	0.292	(0.001)
Nov-19	0.292	(0.002)
Dec-19	0.292	(0.003)
Jan-20	0.292	(0.003)
Feb-20	0.292	(0.004)
Mar-20	0.289	(0.004)
1YR Strip	0.292	(0.000)

CME Future Prices

Propane (C3)
Non-LDH— Mont Belvieu

Month	Close	Change
Apr-19	0.679	0.009
May-19	0.679	0.009
Jun-19	0.677	0.008
Jul-19	0.677	0.008
Aug-19	0.678	0.008
Sep-19	0.681	0.008
Oct-19	0.688	0.008
Nov-19	0.694	0.009
Dec-19	0.699	0.009
Jan-20	0.703	0.008
Feb-20	0.708	0.008
Mar-20	0.704	0.009
1YR Strip	0.689	0.008



NATURAL GAS NEWS

Prompt WTI (CL) Crude
Daily Sentiment

BULLISH



RESISTANCE
57.12 & 57.66
SUPPORT
55.93 & 55.28

FOLLOW US ON TWITTER:



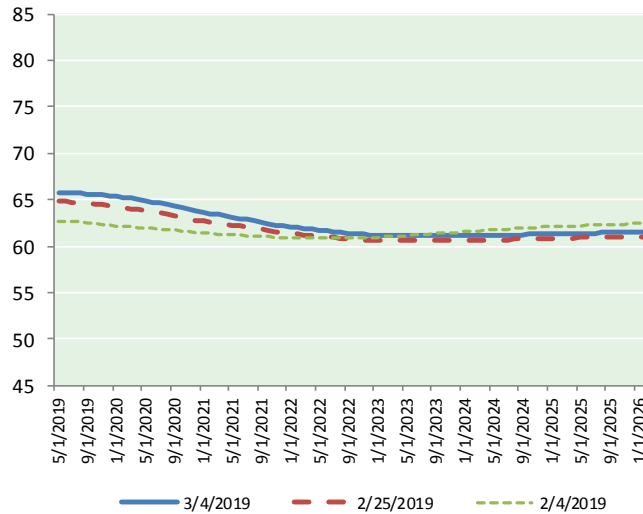
@MPG_NatGasNews

NYMEX Brent (BZ)

Futures

Month	Close	Change
Apr-19	56.59	0.79
May-19	56.97	0.78
Jun-19	57.42	0.77
Jul-19	57.89	0.78
Aug-19	58.28	0.79
Sep-19	58.55	0.80
Oct-19	58.71	0.81
Nov-19	58.78	0.83
Dec-19	58.78	0.83
Jan-20	58.72	0.83
Feb-20	58.63	0.84
Mar-20	58.51	0.85
Apr-20	58.38	0.86
May-20	58.22	0.86
Jun-20	58.07	0.86
Jul-20	57.89	0.87
Aug-20	57.71	0.87
Sep-20	57.55	0.88
Oct-20	57.40	0.90
Nov-20	57.26	0.90
Dec-20	57.14	0.92
Jan-21	56.95	0.93
Feb-21	56.76	0.93
Mar-21	56.60	0.95
1YR Strip 2019	58.15	0.81
5YR Strip	56.06	0.93

BRENT CRUDE FORWARD CURVE



FRAC Spread

Specifications

Ethane :	42%	66,500 btu/g
Propane:	28%	90,830 btu/g
Butane:	11%	102,916 btu/g
Iso-Butane:	6%	98,935 btu/g
Natural Gasoline:	13%	115,021 btu/g

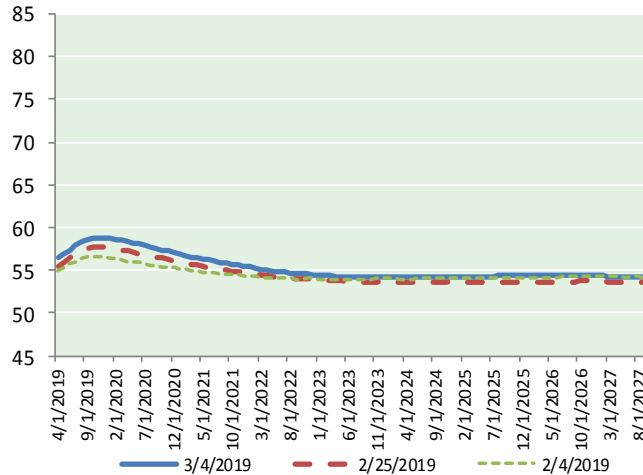
Prompt NGL Futures

	Apr-19	Close	Change
Butane	0.788	0.003	
Iso-Butane	0.820	0.008	
Nat Gasoline	1.199	0.018	

NYMEX WTI (CL) Futures

Month	Close	Change
May-19	65.67	0.60
Jun-19	65.74	0.63
Jul-19	65.69	0.66
Aug-19	65.67	0.67
Sep-19	65.62	0.68
Oct-19	65.57	0.71
Nov-19	65.51	0.73
Dec-19	65.41	0.74
Jan-20	65.34	0.76
Feb-20	65.25	0.77
Mar-20	65.15	0.77
Apr-20	65.04	0.77
May-20	64.91	0.77
Jun-20	64.76	0.79
Jul-20	64.62	0.80
Aug-20	64.47	0.81
Sep-20	64.32	0.83
Oct-20	64.16	0.83
Nov-20	63.97	0.84
Dec-20	63.79	0.85
Jan-21	63.64	0.87
Feb-21	63.50	0.89
Mar-21	63.36	0.90
Apr-21	63.23	0.91
1YR Strip 2019	65.47	0.71
5YR Strip	62.83	0.91

WTI CRUDE FORWARD CURVE



WTI-BRENT SPREAD

