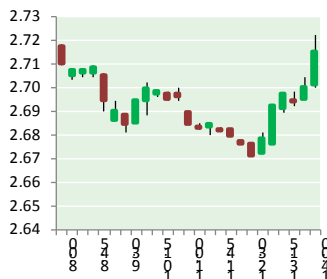


NATURAL GAS



MARCH 28, 2019

Prior Day's NYMEX APR-19 Contract (CT)



NYMEX NG Futures

Month	Close	Change
May-19	2.719	(0.032)
Jun-19	2.771	(0.032)
Jul-19	2.829	(0.032)
Aug-19	2.852	(0.032)
Sep-19	2.846	(0.032)
Oct-19	2.861	(0.031)
Nov-19	2.910	(0.028)
Dec-19	3.040	(0.027)
Jan-20	3.120	(0.025)
Feb-20	3.059	(0.025)
Mar-20	2.936	(0.019)
Apr-20	2.631	(0.014)
May-20	2.585	(0.011)
Jun-20	2.608	(0.012)
Jul-20	2.633	(0.013)
Aug-20	2.635	(0.012)
Sep-20	2.617	(0.012)
Oct-20	2.639	(0.010)
Nov-20	2.683	(0.010)
Dec-20	2.832	(0.009)
Jan-21	2.946	(0.010)
Feb-21	2.896	(0.010)
Mar-21	2.767	(0.010)
Apr-21	2.510	(0.008)
1YR Strip 2019	2.881	(0.027)
5YR Strip	2.854	(0.031)
5YR Strip	2.740	(0.013)

IN THE NEWS

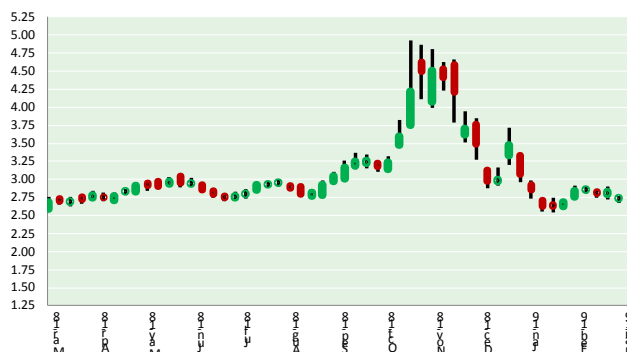
Denmark Wants a New Route for Nord Stream 2 Gas Pipeline— Bloomberg reported: A controversial natural gas pipeline from Russia to Germany may be delayed after Denmark asked the company behind the link to investigate an alternative route. Denmark's Energy Agency, which is carrying out an assessment on how the new gas link would affect the environment in its exclu-

- Denmark Wants a New Route for Nord Stream 2 Gas Pipeline
- Proposal to drill for shale gas at U.S. Steel site near Pittsburgh

sive economic zone of the Baltic Sea, asked the pipeline's promoters to study a different route. It has not rejected either of the two pending permit applications, Nord Stream 2 said on Wednesday. The move extends uncertainty about what European Union authorities might do to block the pipeline, which Nord Stream 2 says is on track to start working at the end of this year. For more on this story visit bloomberg.com or click <https://bloom.bg/2uA5tmI>

Proposal to drill for shale gas at U.S. Steel site near Pittsburgh prompts contentious hearing— State Impact Pennsylvania reported: At hearing Wednesday night on a proposal to drill for natural gas at a U.S. Steel facility in the eastern Pittsburgh suburbs, dozens of residents and environmentalists lined up to speak out against the plan, as well as grill state officials and company representatives with questions. New Mexico-based Merrion Oil and Gas wants to drill at the Edgar Thomson plant next year to supply natural gas to the steelmaking facility. It has already secured some approvals from municipalities in the path of drilling, and now it's seeking several permits from the Pennsylvania Department of Environmental Protection. In addition to building a wellpad and drilling in the Marcellus Shale, the company also plans to build access roads and two pipelines, including one for gas and one for water. Wednesday's hearing in Braddock began with Merrion representatives explaining plans for the project and DEP officials outlining permit requirements. But it soon evolved into a contentious string of questions and criticism from attendees. For more on this story visit stateimpact.npr.org or click <https://n.pr/2HVDBv6>

12 MONTH CANDLESTICK (WEEKLY)



Prompt Natural Gas (NG) Daily Sentiment

BEARISH



RESISTANCE

2.75 & 2.78

SUPPORT

2.69 & 2.66

Trading Summary

NATURAL GAS

Futures	Close	Change
NG	2.719	(0.032)
Volume	184,129	119,397
Open Int.	1,141,797	7,634

CRUDE AND GASOLINE

Futures	Close	Change
Crude	59.41	(0.53)
RBOB	1.8955	(0.0602)
Crude/NG	21.85	0.06

METALS

Futures	Close	Change
Gold	1,310.40	(15.10)

EQUITIES

Exchange	Close	Change
DOW	25,625.59	(32.14)
S&P 500	-1,692.83	(13.09)

CURRENCY

Currency	Close	Change
EUR/USD	1.1222	(0.0022)
USD/CND	1.2405	0.0027

Contact Us



Mansfield Energy Corp
1025 Airport Pkwy
Gainesville, GA 30501

www.mansfield.energy

info@mansfieldoil.com

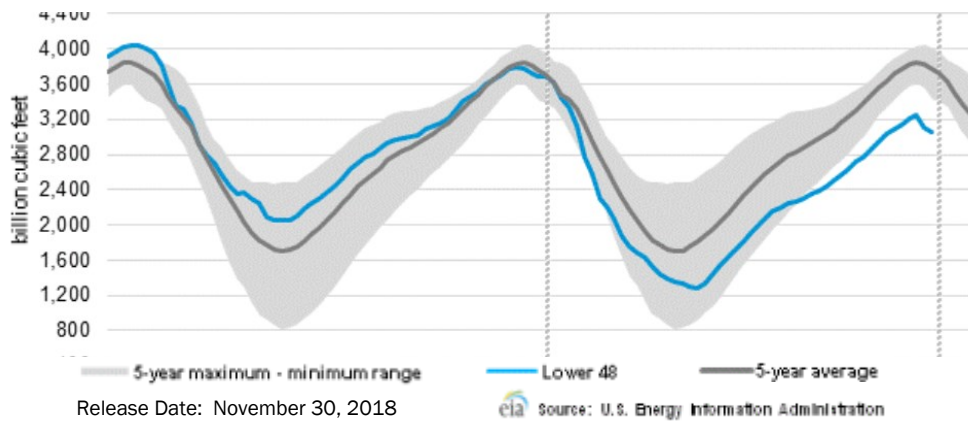
Phone: (800) 695-6626





NATURAL GAS NEWS

WEEKLY GAS IN UNDERGROUND STORAGE WITH 5-YR RANGE



Rig Count

Report Date: March 22, 2019

	Total	Change
US -	1,016	(22)
CN -	105	(106)

EIA Weekly NG Storage Actual and Surveys for March 22, 2019

Released March 21, 2019

Range – +66 to +33

PIRA – (49)

PointLogic – (50)

Citi Futures – (55)

EIA ACTUAL – (47)

Total Working Gas In Storage

1,143 BCF

(47) BCF (LAST WEEK)

(315) BCF (LAST YEAR)

(556) BCF (5-YR AVG)

U.S. Natural Gas Supply Gas Week 3/14 – 3/20

Average daily values (BCF/d):

Last Year (BCF/d)

Dry Production – +78.9

Total Supply – +85.7

Last Week (BCF/d)

Dry Production – +88.3

Total Supply – +93.4

[NEXT REPORT ON Mar 29]

U.S. Natural Gas Demand Gas Week 3/14 – 3/20

Average daily values (BCF/D):

Last Year (BCF/d)

Power – +23.1

Total Demand – +93.1

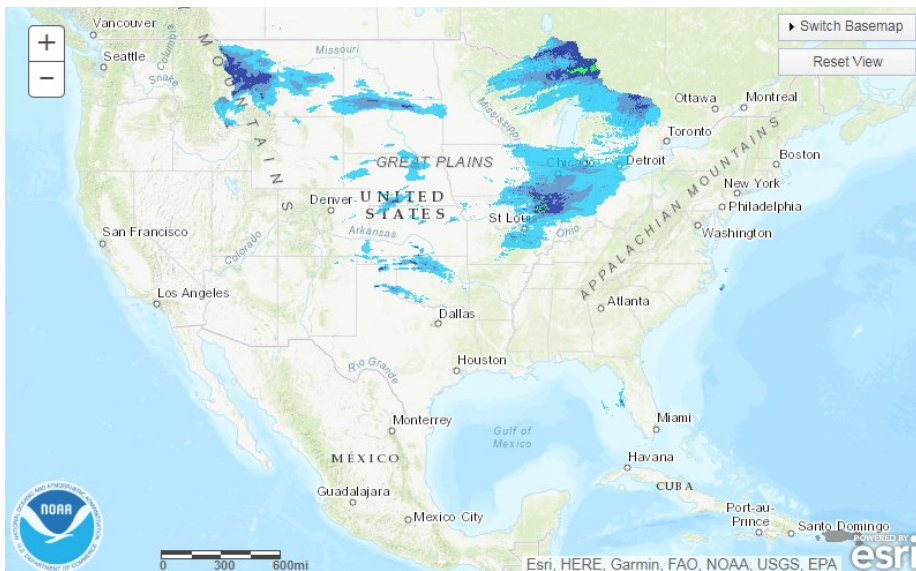
Last Week (BCF/d)

Power – +22.4

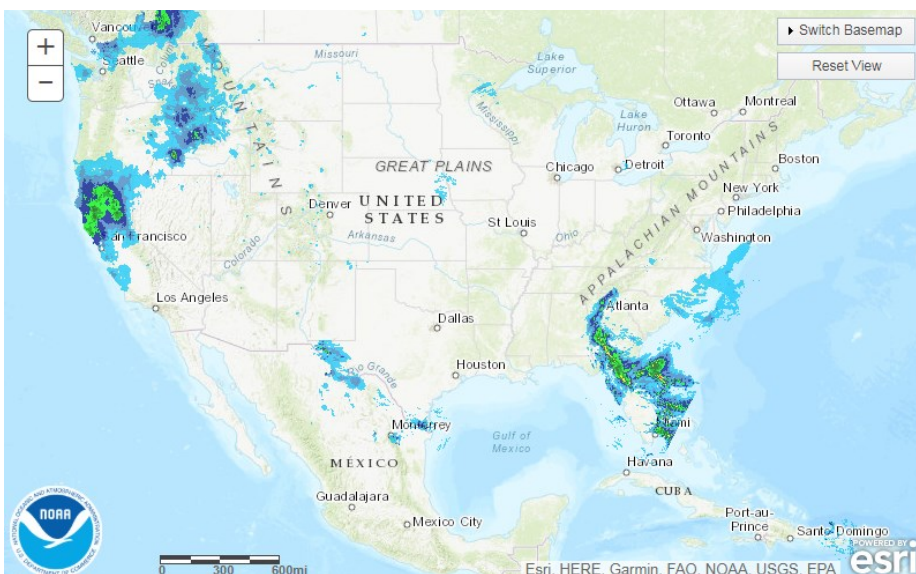
Total Demand – +97.3

[NEXT REPORT ON Mar 29]

TODAY'S PRECIPITATION

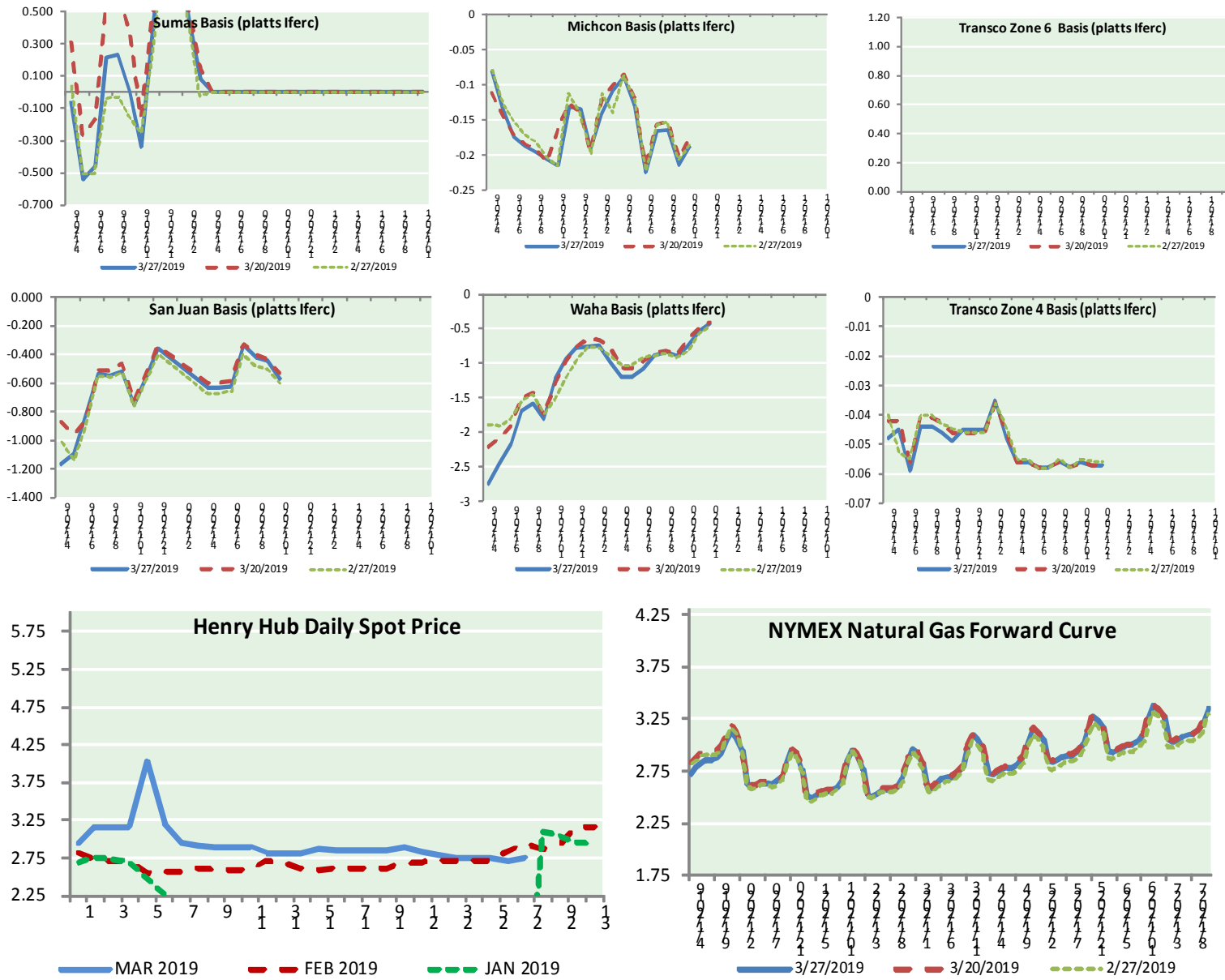


24 HOUR PRECIPITATION





NATURAL GAS BASIS FUTURES, HENRY HUB SPOT PRICES, AND FORWARD CURVE



NYMEX WTI Delivery
Month Average (\$/bbl)
 (Excluding Weekends and Holidays)

Month: March 2019

Day	Price	Day	Price
1	55.80	16	
2		17	
3		18	59.09
4	56.59	19	59.03
5	56.56	20	59.83
6	56.22	21	59.98
7	56.66	22	59.04
8	56.07	23	
9		24	
10		25	58.82
11	56.79	26	59.94
12	56.87	27	59.41
13	58.26	28	
14	58.61	29	
15	58.52	30	
		31	
Average (Mar)		58.0047	
		(through 03/27/2019)	
Average (Feb)		55.0360	
Average (Jan)		51.5505	

CME NG Option Prices

ATM Call

Month	Strike	Close	Imp Vol
Jun-19			
Jul-19	2.800	0.078	18.7
Aug-19			
Sep-19			
Oct-19			

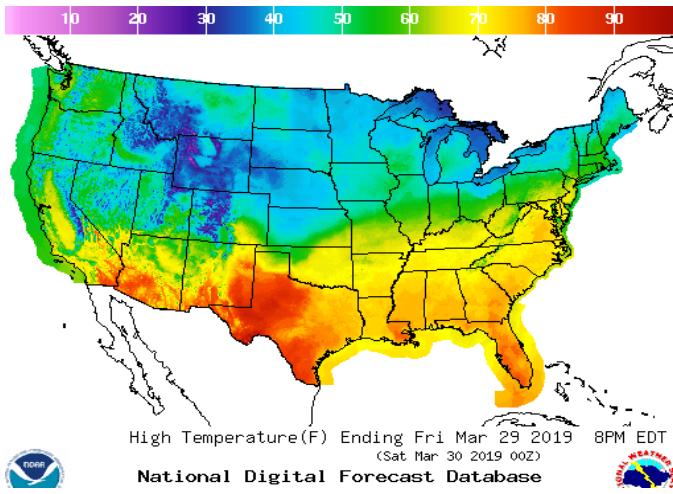
CME NG Option Prices

ATM Put

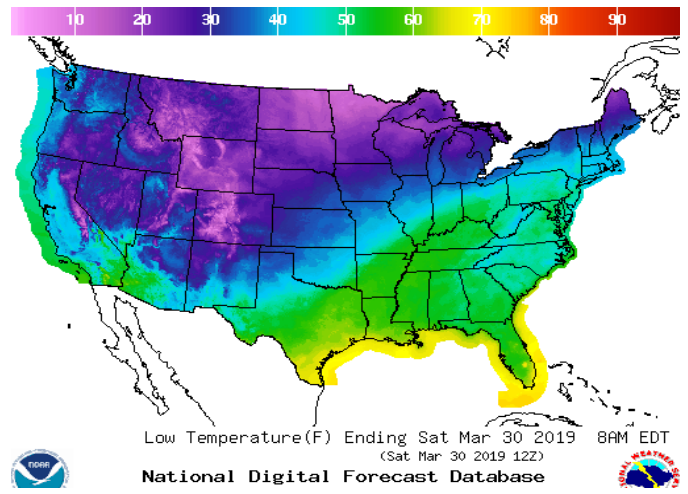
Jun-19			
Jul-19	2.800	0.103	20.6
Aug-19			
Sep-19			
Oct-19			

WEATHER – HIGH / LOW TEMPERATURE TOMORROW

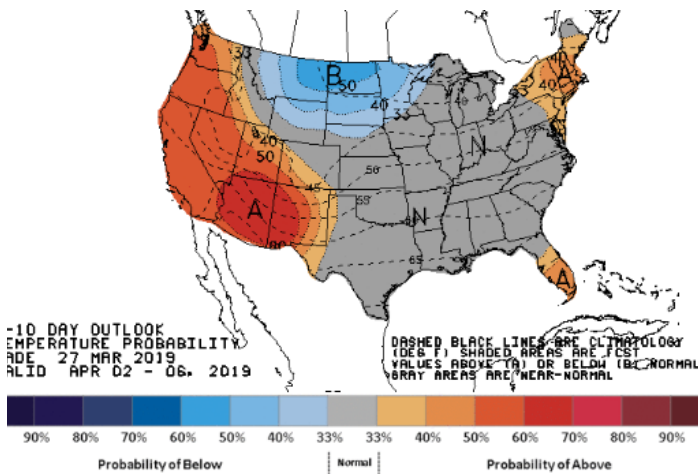
HIGH Temperature



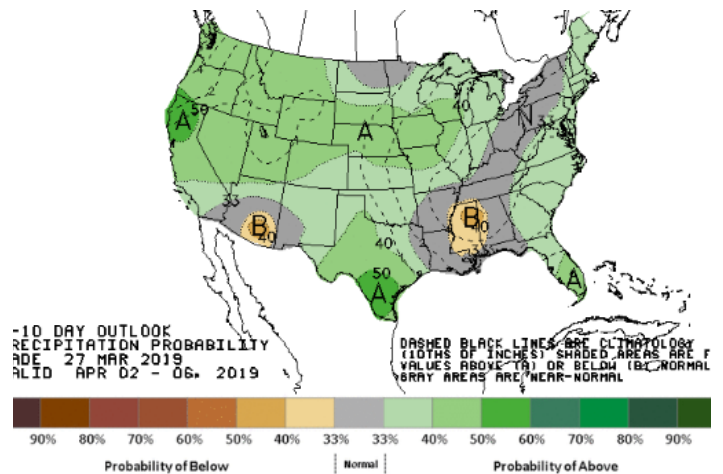
LOW Temperature



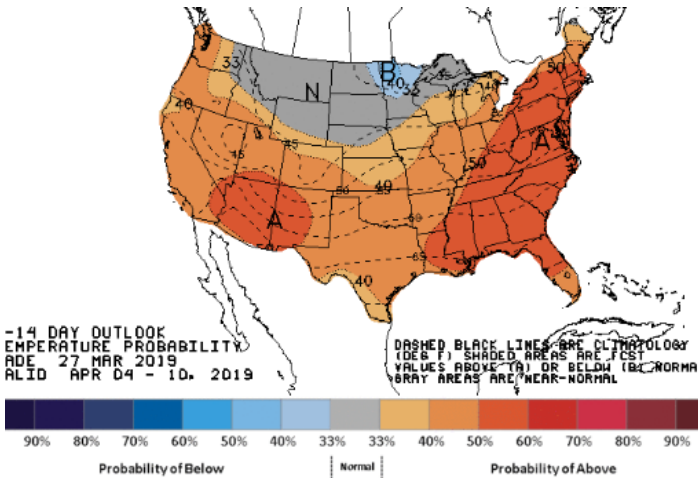
WEATHER – 6 TO 10 DAY OUTLOOK – NOAA
Temperature



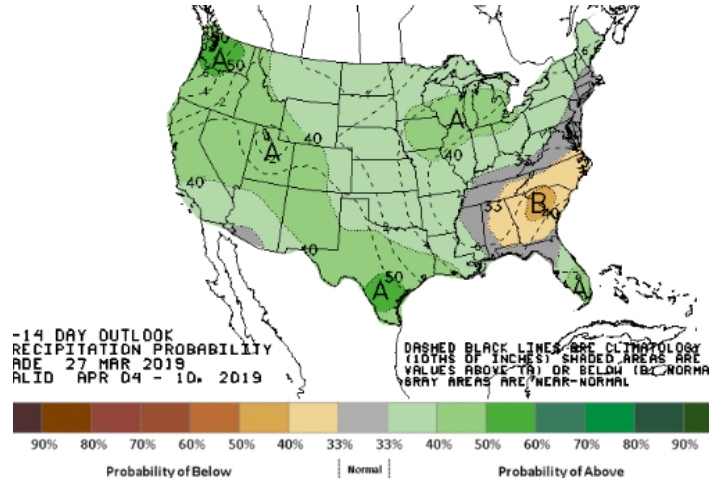
Precipitation



WEATHER – 8 TO 14 DAY OUTLOOK – NOAA
Temperature



Precipitation



NATURAL GAS NEWS



Prompt WTI (CL) Crude
Daily Sentiment

BULLISH



RESISTANCE
60.15 & 60.89
SUPPORT
58.74 & 58.07

FOLLOW US ON TWITTER:



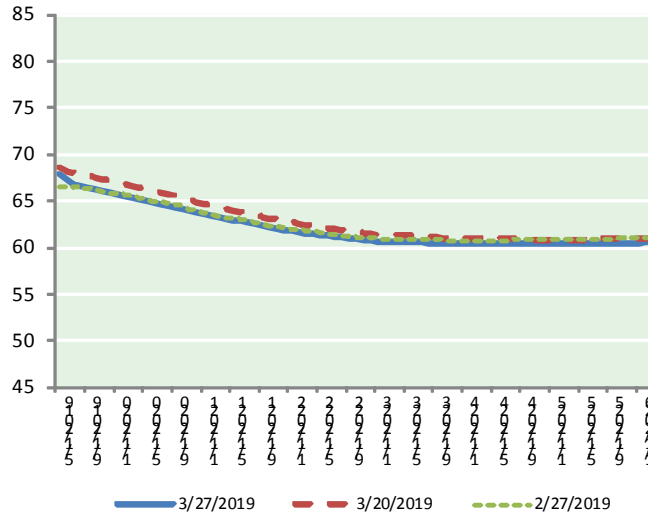
@MPG_NatGasNews

NYMEX Brent (BZ)

Futures

Month	Close	Change
May-19	59.41	(0.53)
Jun-19	59.61	(0.49)
Jul-19	59.77	(0.46)
Aug-19	59.91	(0.43)
Sep-19	59.98	(0.41)
Oct-19	59.96	(0.38)
Nov-19	59.88	(0.36)
Dec-19	59.76	(0.34)
Jan-20	59.60	(0.32)
Feb-20	59.40	(0.30)
Mar-20	59.18	(0.28)
Apr-20	58.94	(0.28)
May-20	58.71	(0.28)
Jun-20	58.50	(0.28)
Jul-20	58.26	(0.28)
Aug-20	58.04	(0.28)
Sep-20	57.83	(0.27)
Oct-20	57.62	(0.27)
Nov-20	57.46	(0.27)
Dec-20	57.31	(0.27)
Jan-21	57.09	(0.27)
Feb-21	56.86	(0.26)
Mar-21	56.65	(0.25)
Apr-21	56.45	(0.25)
1YR Strip	59.62	(0.38)
2019	59.79	(0.43)
5YR Strip	55.94	(0.26)

BRENT CRUDE FORWARD CURVE



FRAC Spread

Specifications

Ethane :	42%	66,500 btu/g
Propane :	28%	90,830 btu/g
Butane :	11%	102,916 btu/g
Iso-Butane :	6%	98,935 btu/g
Natural Gasoline :	13%	115,021 btu/g

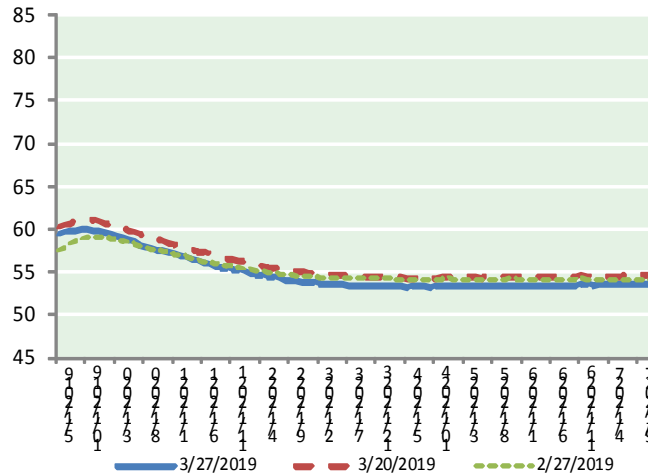
Prompt NGL Futures

	Apr-19	Close	Change
Butane	0.772	(0.000)	
Iso-Butane	0.839	(0.000)	
Nat Gasoline	1.256	(0.002)	

NYMEX WTI (CL) Futures

Month	Close	Change
May-19	67.83	(0.14)
Jun-19	67.24	(0.19)
Jul-19	66.87	(0.23)
Aug-19	66.62	(0.23)
Sep-19	66.41	(0.23)
Oct-19	66.22	(0.24)
Nov-19	66.05	(0.23)
Dec-19	65.86	(0.22)
Jan-20	65.69	(0.22)
Feb-20	65.52	(0.22)
Mar-20	65.37	(0.21)
Apr-20	65.21	(0.21)
May-20	65.04	(0.21)
Jun-20	64.87	(0.20)
Jul-20	64.71	(0.20)
Aug-20	64.54	(0.20)
Sep-20	64.36	(0.20)
Oct-20	64.18	(0.20)
Nov-20	63.96	(0.21)
Dec-20	63.75	(0.21)
Jan-21	63.60	(0.21)
Feb-21	63.45	(0.20)
Mar-21	63.30	(0.20)
Apr-21	63.14	(0.20)
1YR Strip	66.24	(0.21)
2019	66.64	(0.21)
5YR Strip	62.69	(0.20)

WTI CRUDE FORWARD CURVE



WTI-BRENT SPREAD

