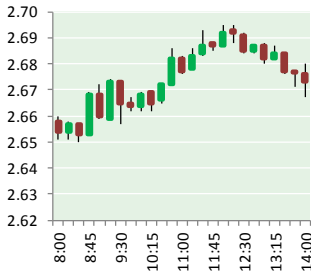


NATURAL GAS



MARCH 21, 2018

Prior Day's NYMEX Mar-18 Contract (CT)



NYMEX NG Futures

Month	Close	Change
Apr-18	2.675	0.024
May-18	2.704	0.026
Jun-18	2.760	0.024
Jul-18	2.818	0.023
Aug-18	2.835	0.022
Sep-18	2.820	0.022
Oct-18	2.832	0.022
Nov-18	2.880	0.021
Dec-18	3.001	0.021
Jan-19	3.087	0.021
Feb-19	3.055	0.019
Mar-19	2.962	0.017
Apr-19	2.691	0.008
May-19	2.654	0.006
Jun-19	2.681	0.006
Jul-19	2.709	0.005
Aug-19	2.717	0.006
Sep-19	2.706	0.007
Oct-19	2.733	0.007
Nov-19	2.782	0.006
Dec-19	2.910	0.004
Jan-20	3.015	0.003
Feb-20	2.989	0.003
Mar-20	2.897	0.002
1YR Strip	2.869	0.022
2018	2.814	0.023
5YR Strip	2.825	0.008

IN THE NEWS

Exxon still assessing damage to Papua New Guinea natural gas facilities — Reuters reported: A senior Exxon Mobil Corp executive said on Wednesday the company is still assessing damage to its natural gas processing plant in the mountains of Papua New Guinea, knocked out by a strong earthquake last month. A pow-

- Exxon still assessing damage to Papua New Guinea natural gas facilities
- Officials tout natural gas resources

erful 7.5 magnitude quake struck near Exxon's Hides facility on Feb. 25, killing dozens of people and halting production at the site. The temblor damaged power infrastructure and also led to the closure of the Komo jungle airfield, making access to the remote facility difficult. Several aftershocks, as well as the remoteness of the gas field and processing plant - more than 700 kilometers from the export facility near the capital, Port Moresby - have made it difficult to assess and repair any damage, making it unclear when production and exports can resume. Prior to the shutdown, Exxon's Papua New Guinea Liquefied Natural Gas (PNG LNG) export project, had been producing at about 20 percent above its nominal capacity of 6.9 million tonnes a year. For more on this story visit reuters.com or click <http://reut.rs/2G1o6nJ>

Officials tout natural gas resources — The Parkersburg News and Sentinel reported: The Marcellus and Utica shale natural gas deposits throughout the Appalachia region have the potential to change the natural gas industry in North America, officials said. Officials with Shale Crescent USA are at the World Petrochemical Conference this week in Houston, Texas. Shale Crescent USA has been involved with natural gas development efforts in West Virginia, southeastern Ohio and southwestern Pennsylvania as well as in the Mid-Ohio Valley. A big advantage for this region is it is sitting on the gas supply, said Ron Whitfield, vice president of Applied Economics for IHS and lead author of the report. For more visit newsandsentinel.com or click <http://bit.ly/2GTtMh>

12 MONTH CANDLESTICK (WEEKLY)



Prompt Natural Gas (NG) Daily Sentiment

BEARISH



RESISTANCE
2.70 & 2.72
SUPPORT
2.65 & 2.63

Trading Summary

NATURAL GAS

Futures	Close	Change
NG	2.675	0.024
Volume	331,136	(311,224)
Open Int.	1,409,841	(8,105)

CRUDE AND GASOLINE

Futures	Close	Change
Crude	63.40	1.34
RBOB	1.9659	0.0410
Crude/NG	23.70	0.29

METALS

Futures	Close	Change
Gold	1,311.90	3.10

EQUITIES

Exchange	Close	Change
DOW	24,727.27	116.36
S&P 500	30.85	4.02

CURRENCY

Currency	Close	Change
EUR/USD	1.2362	0.0069
USD/CND	1.2405	(0.0067)

Contact Us



Mansfield Energy Corp
1025 Airport Pkwy
Gainesville, GA 30501

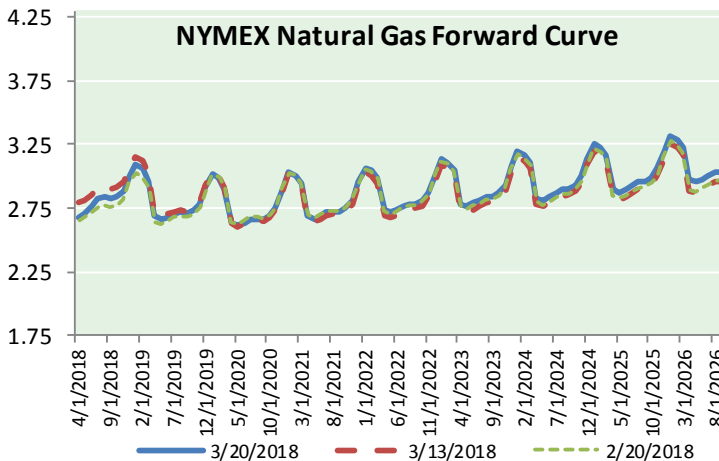
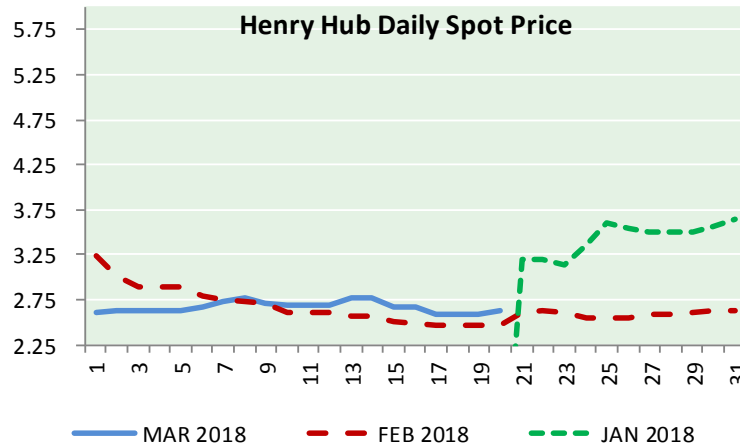
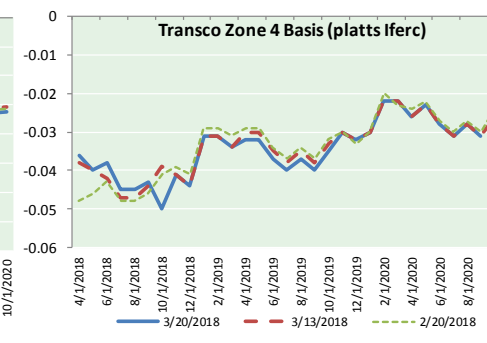
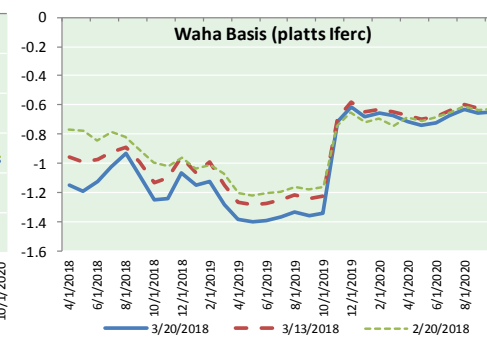
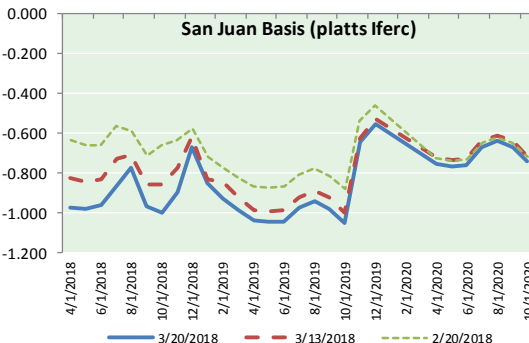
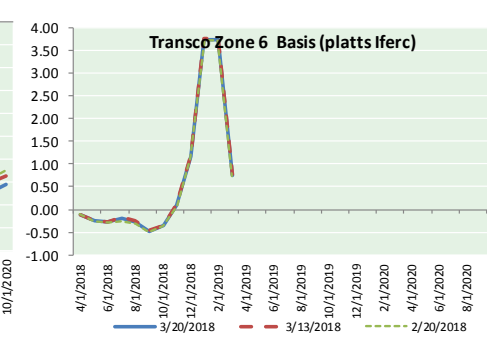
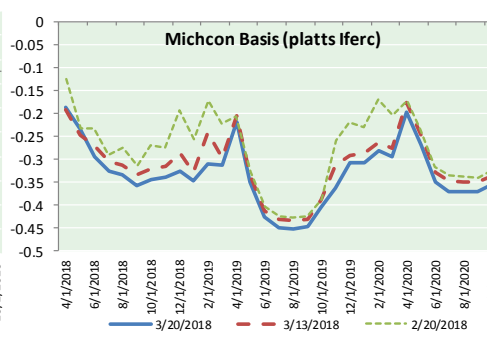
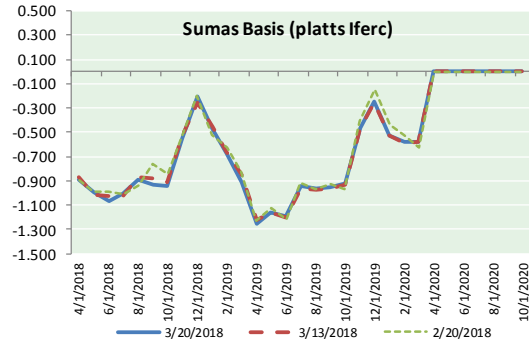
www.mansfield.energy
info@mansfieldoil.com

Phone: (800) 695-6626





NATURAL GAS BASIS FUTURES, HENRY HUB SPOT PRICES, AND FORWARD CURVE



NYMEX WTI Delivery

Month Average (\$/bbl)
(Excluding Weekends and Holidays)

Month: March 2018

Day	Price	Day	Price
1	0.00	16	0.00
2	0.00	17	
3		18	
4		19	0.00
5	0.00	20	0.00
6	0.00	21	
7	0.00	22	
8	0.00	23	
9	0.00	24	
10		25	
11		26	
12	0.00	27	
13	0.00	28	
14	0.00	29	
15	0.00	30	
		31	

Average (Mar) 0.0000
(through 03/20/2018)

Average (Feb) 0.0000
Average (Jan) 0.0000

CME NG Option Prices

ATM Call

Month	Strike	Close	Imp Vol
May-18			
Jun-18	2.750	0.065	22.5
Jul-18			
Aug-18			
Sep-18			

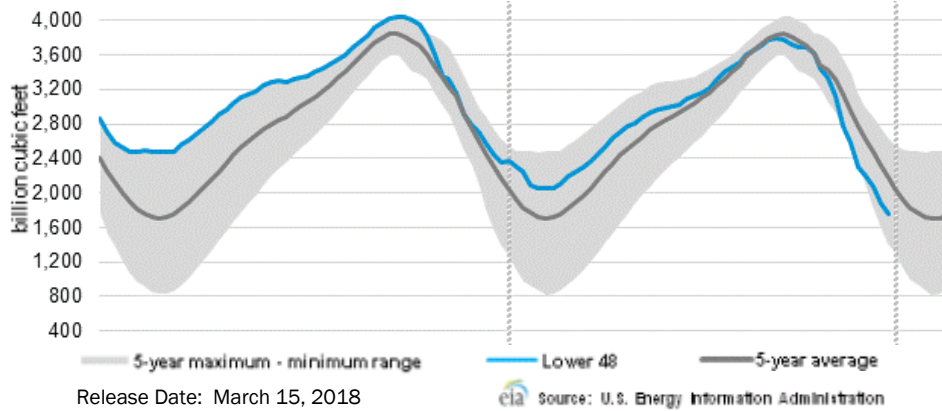
CME NG Option Prices

ATM Put

Month	Strike	Close	Imp Vol
May-18			
Jun-18	2.750	0.108	28.1
Jul-18			
Aug-18			
Sep-18			

NATURAL GAS NEWS

WEEKLY GAS IN UNDERGROUND STORAGE WITH 5-YR RANGE



Rig Count

Report Date: March 16, 2018

	Total	Change
US -	990	+6
CN -	219	(54)

EIA Weekly NG Storage Actual and Surveys for March 8, 2018

Released March 15, 2018

Range (80) to (101)

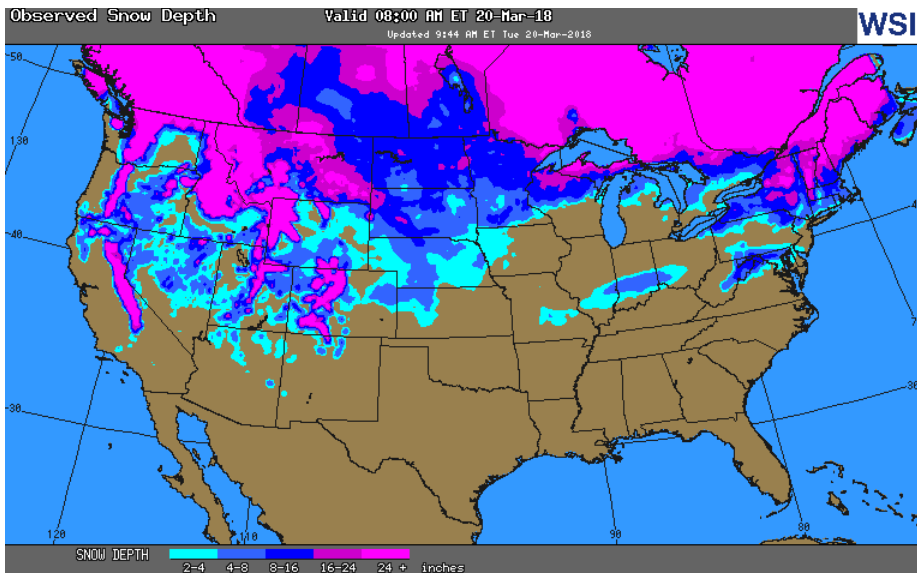
PIRA – (95)

ARM – (100)

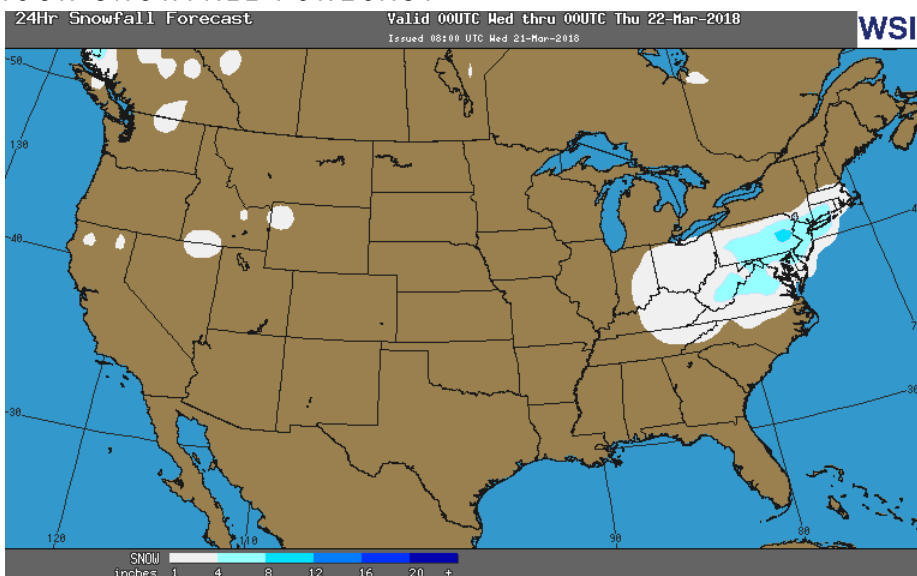
Reuters – (96)

EIA ACTUAL – (57)

OBSERVED SNOW DEPTH



24 HOUR SNOWFALL FORECAST



Total Working Gas In Storage

1,532 BCF

(93) BCF (LAST WEEK)

(718) BCF (LAST YEAR)

(296) BCF (5-YR AVG)

U.S. Natural Gas Supply Gas Week 3/8– 3/14

Average daily values (BCF/D):

Last Year (BCF/d)

Dry Production – +71.3

Total Supply – +77.1

Last Week (BCF/d)

Dry Production – +78.3

Total Supply – +84.8

[NEXT REPORT ON Mar 22]

U.S. Natural Gas Demand Gas Week 3/8– 3/14

Average daily values (BCF/D):

Last Year (BCF/d)

Power – +22.7

Total Demand – +89.3

Last Week (BCF/d)

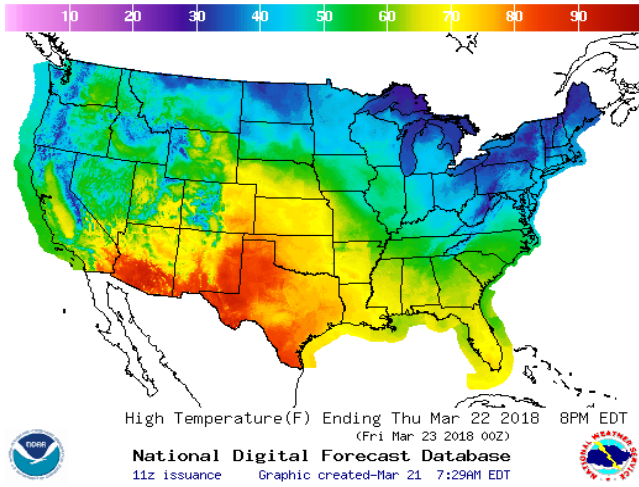
Power – +22.6

Total Demand – +91.0

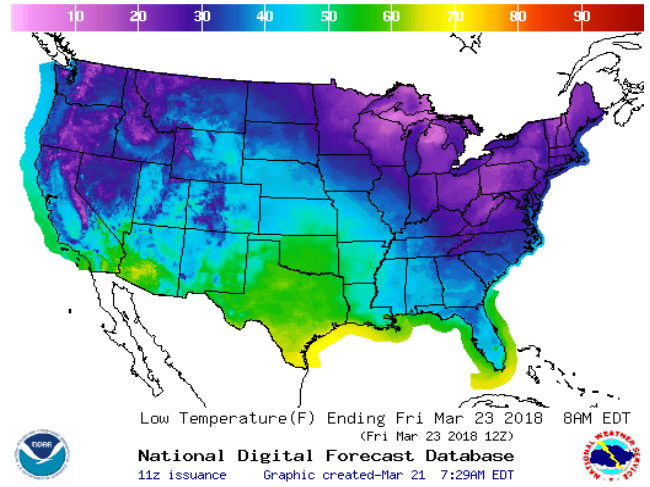
[NEXT REPORT ON Mar 22]

WEATHER – HIGH / LOW TEMPERATURE TOMORROW

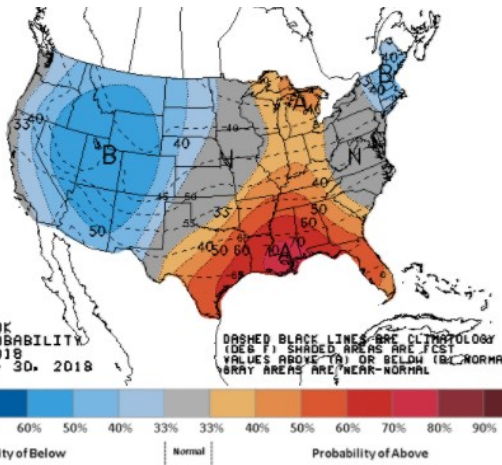
HIGH Temperature



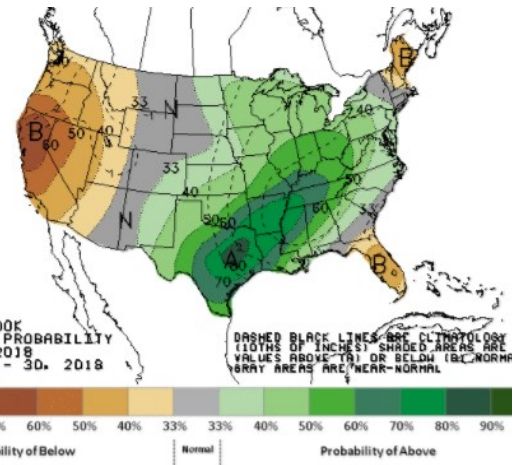
LOW Temperature



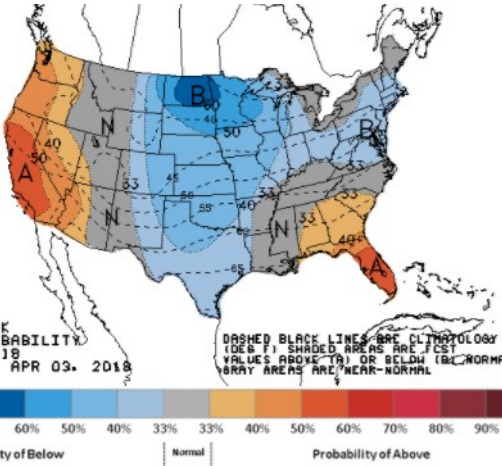
WEATHER – 6 TO 10 DAY OUTLOOK – NOAA
Temperature



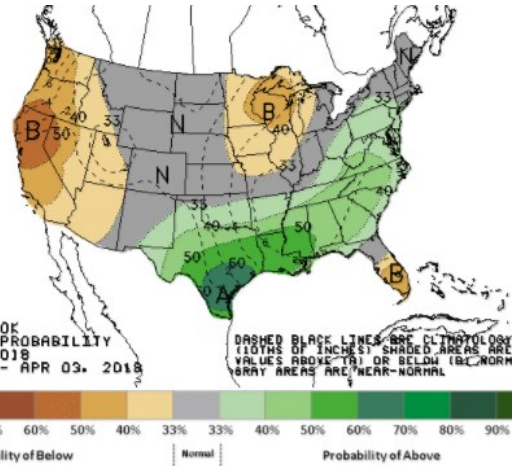
Precipitation



WEATHER – 8 TO 14 DAY OUTLOOK – NOAA
Temperature



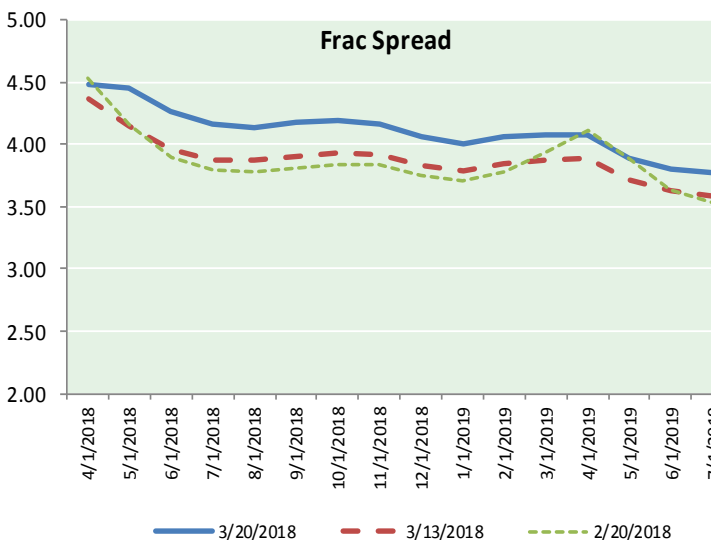
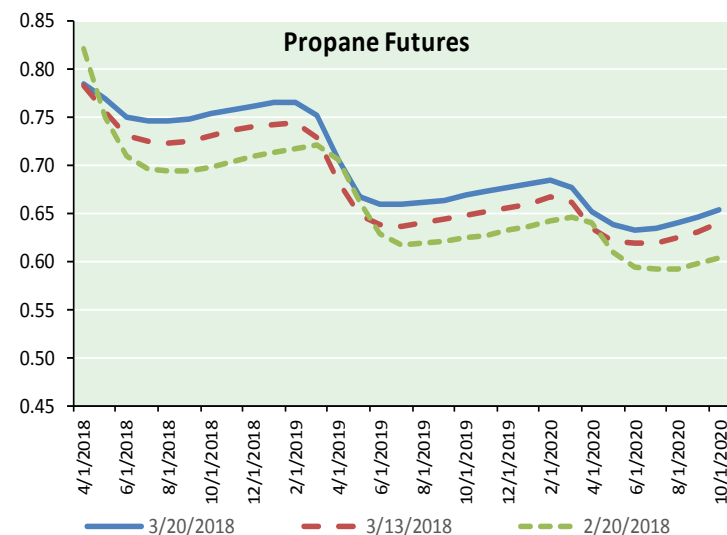
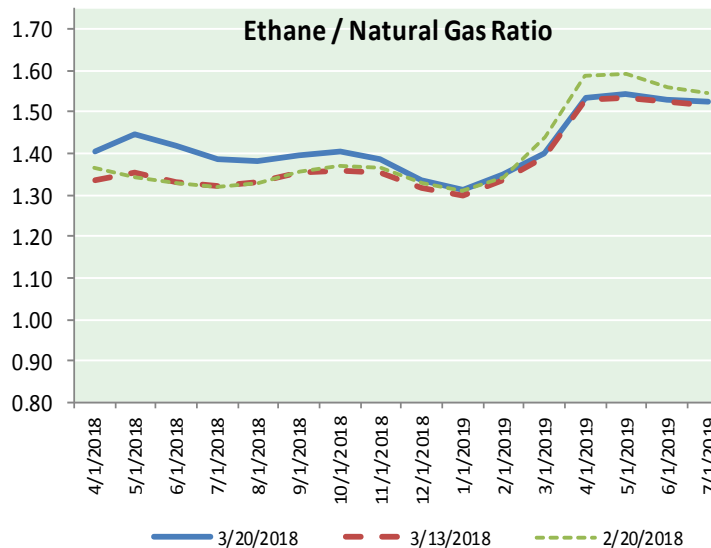
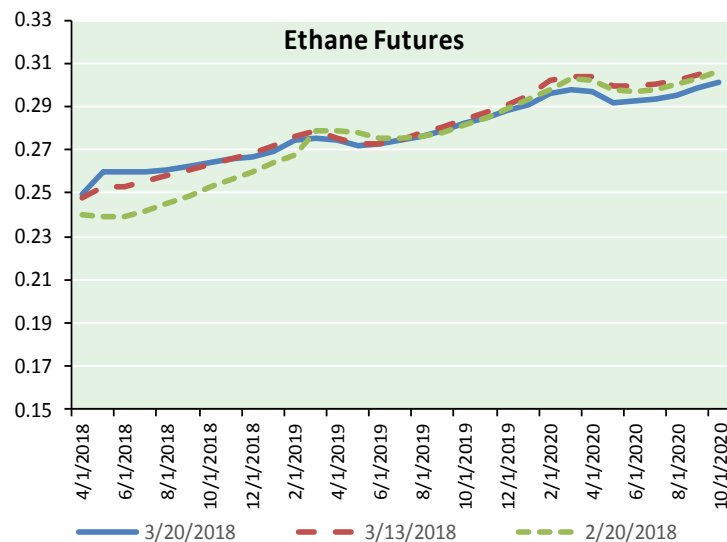
Precipitation



NATURAL GAS NEWS



ETHANE FUTURES, NG/ETHANE RATIO, PROPANE FUTURES, AND THE FRAC SPREAD



CME Future Prices

Ethane (C2)

Non-LDH— Mont Belvieu

Month	Close	Change
Apr-18	0.250	0.002
May-18	0.260	0.006
Jun-18	0.260	0.008
Jul-18	0.260	0.006
Aug-18	0.261	0.005
Sep-18	0.262	0.004
Oct-18	0.264	0.004
Nov-18	0.266	0.003
Dec-18	0.267	0.001
Jan-19	0.269	0.001
Feb-19	0.274	0.003
Mar-19	0.276	0.001

1YR Strip 0.264 0.004

CME Future Prices

Propane (C3)

Non-LDH— Mont Belvieu

Month	Close	Change
Apr-18	0.786	0.007
May-18	0.769	0.018
Jun-18	0.750	0.017
Jul-18	0.746	0.017
Aug-18	0.746	0.017
Sep-18	0.749	0.018
Oct-18	0.754	0.016
Nov-18	0.758	0.016
Dec-18	0.762	0.015
Jan-19	0.766	0.015
Feb-19	0.767	0.015
Mar-19	0.753	0.014

1YR Strip 0.759 0.015

NATURAL GAS NEWS



Prompt WTI (CL) Crude Daily Sentiment

BULLISH



RESISTANCE
64.30 & 65.07
SUPPORT
62.45 & 61.37

FOLLOW US ON TWITTER:



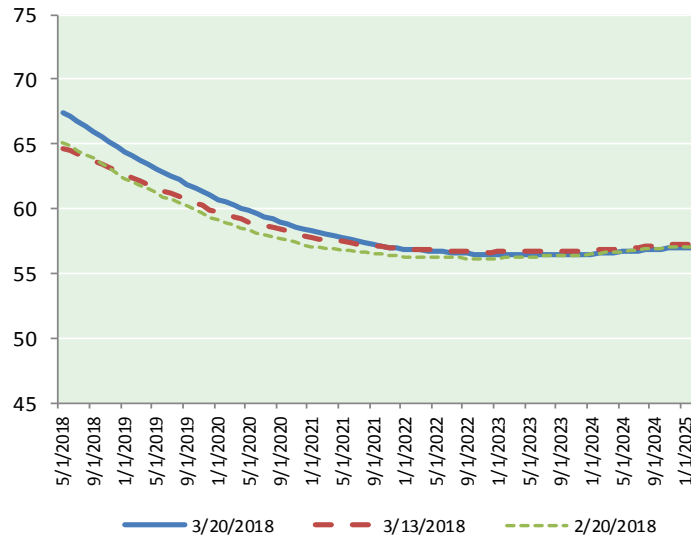
@MPG_NatGasNews

NYMEX Brent (BZ)

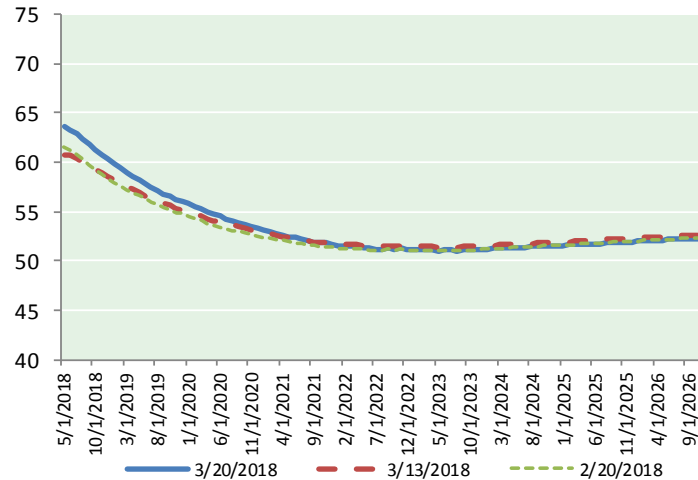
Futures

Month	Close	Change
May-18	67.42	1.37
Jun-18	67.13	1.31
Jul-18	66.76	1.28
Aug-18	66.37	1.25
Sep-18	65.97	1.21
Oct-18	65.57	1.18
Nov-18	65.18	1.15
Dec-18	64.79	1.12
Jan-19	64.42	1.08
Feb-19	64.09	1.06
Mar-19	63.76	1.03
Apr-19	63.44	0.99
May-19	63.12	0.95
Jun-19	62.78	0.91
Jul-19	62.52	0.88
Aug-19	62.24	0.86
Sep-19	61.93	0.83
Oct-19	61.64	0.80
Nov-19	61.34	0.78
Dec-19	61.01	0.76
Jan-20	60.74	0.73
Feb-20	60.52	0.70
Mar-20	60.28	0.67
Apr-20	60.03	0.65
1YR Strip	65.41	1.17
2018	66.15	1.23
5YR Strip	59.74	0.62

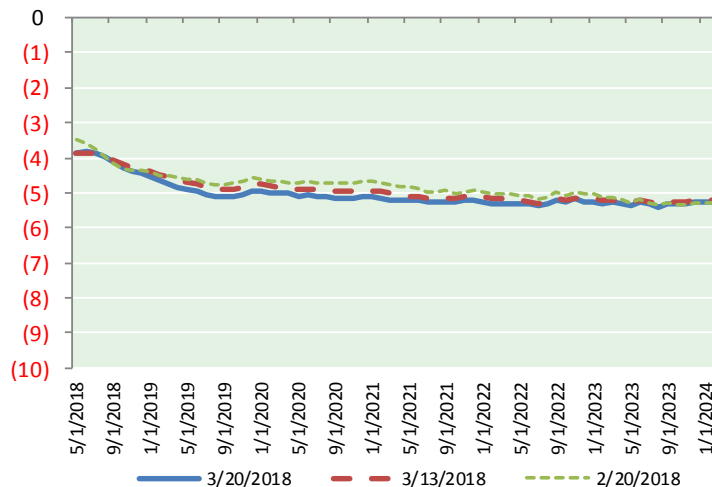
BRENT CRUDE FORWARD CURVE



WTI CRUDE FORWARD CURVE



WTI-BRENT SPREAD



FRAC Spread

Specifications

Ethane : 42%	66,500 btu/g
Propane: 28%	90,830 btu/g
Butane: 11%	102,916 btu/g
Iso-Butane: 6%	98,935 btu/g
Natural Gasoline: 13%	115,021 btu/g

Prompt NGL Futures

(\$/gallon)

Apr-18	Close	Change
Butane	0.906	0.007
Iso-Butane	0.906	0.007
Nat Gasoline	1.450	0.017

NYMEX WTI (CL) Futures

Month	Close	Change
Apr-18	63.40	1.34
May-18	63.54	1.41
Jun-18	63.31	1.35
Jul-18	62.90	1.29
Aug-18	62.38	1.22
Sep-18	61.83	1.16
Oct-18	61.29	1.10
Nov-18	60.79	1.04
Dec-18	60.33	0.98
Jan-19	59.89	0.93
Feb-19	59.43	0.90
Mar-19	58.99	0.85
Apr-19	58.58	0.81
May-19	58.20	0.79
Jun-19	57.83	0.76
Jul-19	57.46	0.74
Aug-19	57.12	0.71
Sep-19	56.81	0.68
Oct-19	56.53	0.65
Nov-19	56.28	0.63
Dec-19	56.06	0.60
Jan-20	55.78	0.58
Feb-20	55.51	0.56
Mar-20	55.25	0.54
1YR Strip	61.51	1.13
2018	62.20	1.21
5YR Strip	54.92	0.51