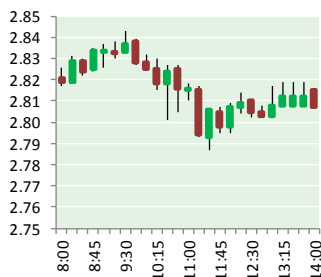


NATURAL GAS



MARCH 1, 2019

Prior Day's NYMEX APR-19 Contract (CT)



NYMEX NG Futures

Month	Close	Change
Apr-19	2.812	0.013
May-19	2.823	0.010
Jun-19	2.863	0.013
Jul-19	2.905	0.016
Aug-19	2.919	0.018
Sep-19	2.907	0.021
Oct-19	2.923	0.023
Nov-19	2.970	0.027
Dec-19	3.105	0.033
Jan-20	3.184	0.033
Feb-20	3.123	0.032
Mar-20	3.000	0.037
Apr-20	2.631	0.017
May-20	2.581	0.015
Jun-20	2.603	0.015
Jul-20	2.628	0.013
Aug-20	2.629	0.013
Sep-20	2.610	0.015
Oct-20	2.629	0.015
Nov-20	2.671	0.013
Dec-20	2.818	0.010
Jan-21	2.934	0.008
Feb-21	2.879	0.007
Mar-21	2.739	0.007
1YR Strip 2019	2.961	0.023
5YR Strip	2.914	0.019
	2.735	0.010

IN THE NEWS

ExxonMobil makes natural gas discovery offshore Cyprus— Oil and Gas Journal reported: ExxonMobil Corp. announced a natural gas discovery offshore Cyprus in the Eastern Mediterranean on Block 10. The Glaucus-1 well cut 436 ft of reservoir rock. Evaluation of the potential of Block 10 continues. The well was drilled to 13,780 ft in 6,769 ft

- **ExxonMobil makes natural gas discovery offshore Cyprus**
- **Wagers For \$3 Natural Gas Get Trickier Amid Mixed Weather Forecasts**

of water. ExxonMobil said preliminary interpretation of the well data indicates gas resources of 5-8 tcf although additional analysis will determine resource potential. Glaucus-1 was the second well drilled on Block 10. The first well, Delphyne-1, did not encounter commercial quantities of hydrocarbons. "These are encouraging results in a frontier exploration area," said Steve Greenlee, president of ExxonMobil Exploration Co. Block 10 covers 635,554 acres. ExxonMobil Exploration & Production Cyprus (Offshore) Ltd. operates the block with 60% interest. Qatar Petroleum International Upstream holds the remaining interest. For more on this story visit [ogj.com](https://bit.ly/2HbGOMP) or click <https://bit.ly/2HbGOMP>

Wagers For \$3 Natural Gas Get Trickier Amid Mixed Weather Forecasts— Investing reports: With the window for winter closing in three weeks, natural gas bulls are hoping for another run toward the \$3 pricing mark. But while a final burst of cold is forecast before the official start of spring on March 20, it might be much too little too late to tip the market over that target. Dominick Chirichella, director of risk and trading at the Energy Management Institute in New York, is among those analysts who see limited upside for gas-driven heating demand and pricing through March. In an outlook written for Friday's market, Chirichella said: "The next few weeks are likely to experience colder-than-normal temperatures across the main Nat Gas consuming regions of the country and will result in above-normal withdrawals from inventory." For more on this story visit [investing.com](https://bit.ly/2IH8XxF) or click <https://bit.ly/2IH8XxF>

12 MONTH CANDLESTICK (WEEKLY)



Prompt Natural Gas (NG) Daily Sentiment

BULLISH



RESISTANCE

2.84 & 2.87

SUPPORT

2.79 & 2.76

Trading Summary

NATURAL GAS

Futures	Close	Change
NG	2.812	0.013
Volume	212,962	99,963
Open Int.	1,166,733	1,962

CRUDE AND GASOLINE

Futures	Close	Change
Crude	57.22	0.28
RBOB	1.7523	(0.0083)
Crude/NG	20.35	0.01

METALS

Futures	Close	Change
Gold	1,312.80	(7.30)

EQUITIES

Exchange	Close	Change
DOW	26,007.76	91.76
S&P 500	-2,075.00	12.87

CURRENCY

Currency	Close	Change
EUR/USD	1.1387	0.0013
USD/CND	1.2405	0.0076

Contact Us



Mansfield Energy Corp
1025 Airport Pkwy
Gainesville, GA 30501

www.mansfield.energy

info@mansfieldoil.com

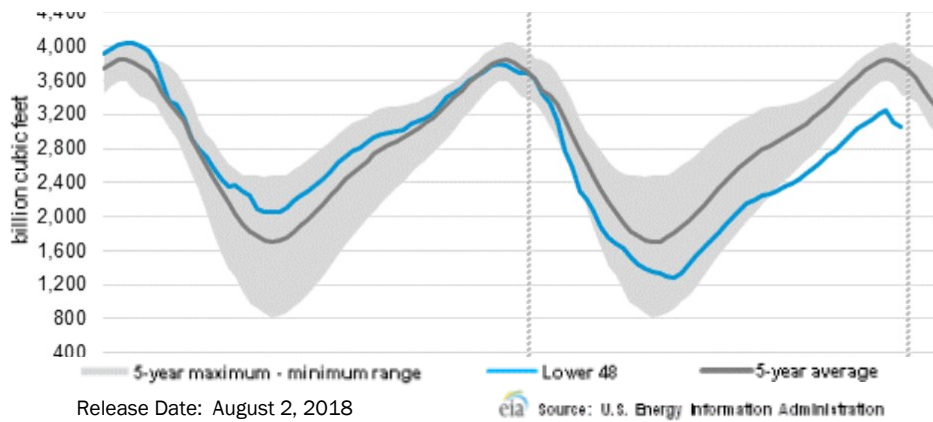
Phone: (800) 695-6626





NATURAL GAS NEWS

WEEKLY GAS IN UNDERGROUND STORAGE WITH 5-YR RANGE



Rig Count

Report Date: February 22, 2019

	Total	Change
US -	1,047	(4)
CN -	212	(12)

EIA Weekly NG Storage Actual and Surveys for March 1, 2019

Released February 28, 2019
 Range – +165 to +118
 PIRA– (175)
 PointLogic – (169)
 Citi Futures – (173)

EIA ACTUAL – (177)

Total Working Gas In Storage

1,539 BCF

(166) BCF (LAST WEEK)
 (154) BCF (LAST YEAR)
 (424) BCF (5-YR AVG)

U.S. Natural Gas Supply Gas Week 2/21 – 2/27

Average daily values (BCF/D):
Last Year (BCF/d)
 Dry Production – +78.2
 Total Supply – +84.1
Last Week (BCF/d)
 Dry Production – +88.6
 Total Supply – +93.6

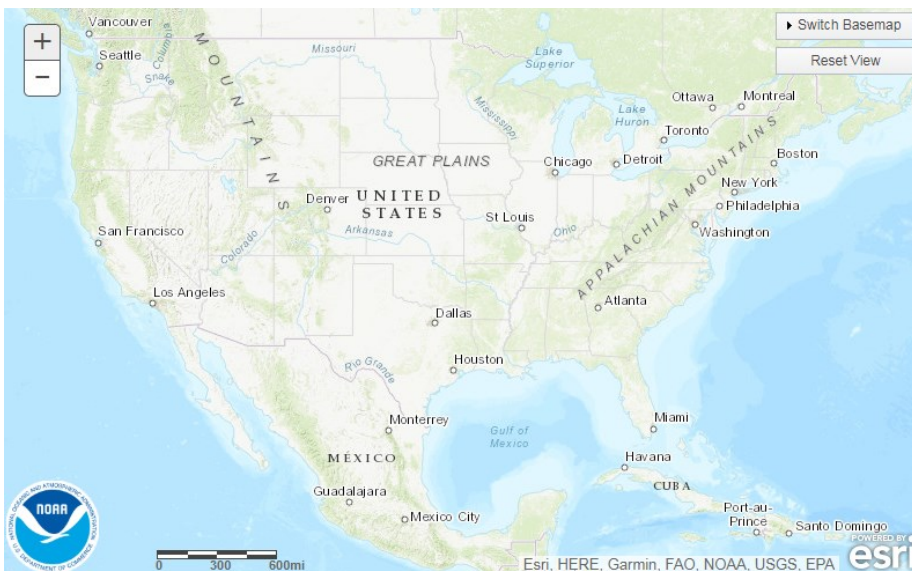
[NEXT REPORT ON Mar 8]

U.S. Natural Gas Demand Gas Week 2/21 – 2/27

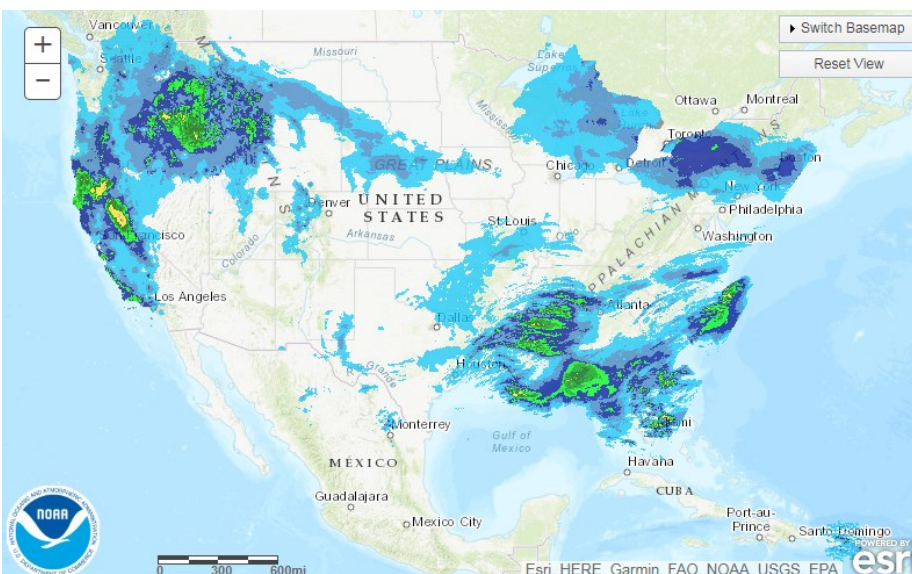
Average daily values (BCF/D):
Last Year (BCF/d)
 Power – +24.1
 Total Demand – +91.8
Last Week (BCF/d)
 Power – +25.2
 Total Demand – +109.0

[NEXT REPORT ON Mar 8]

TODAY'S PRECIPITATION



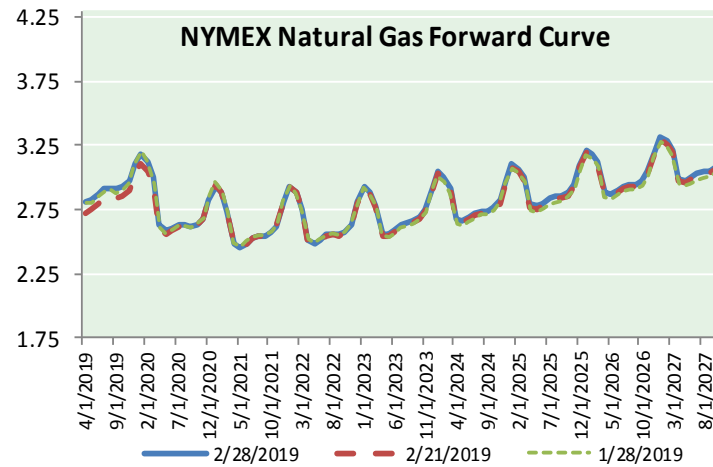
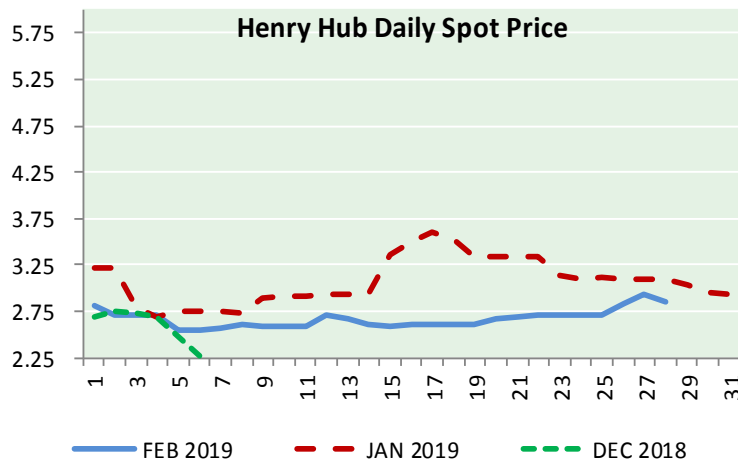
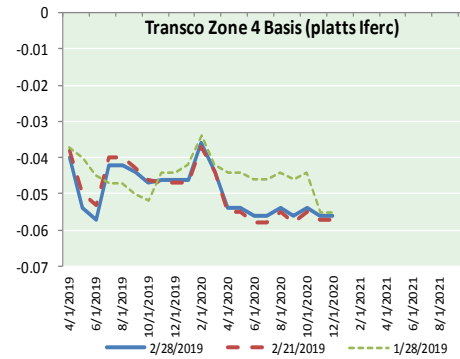
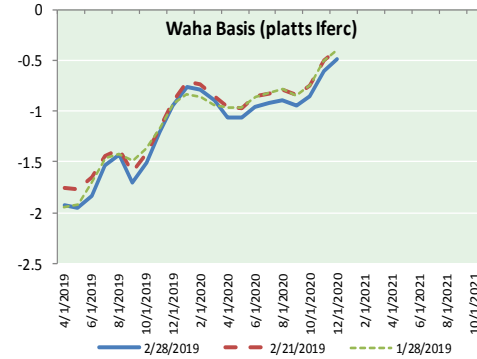
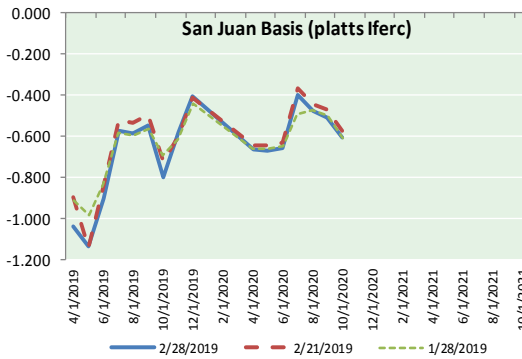
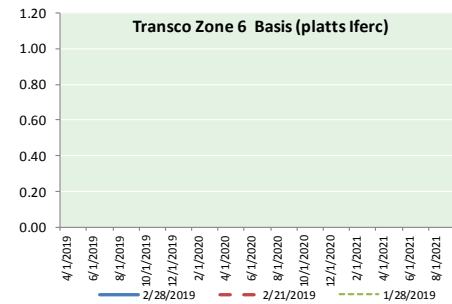
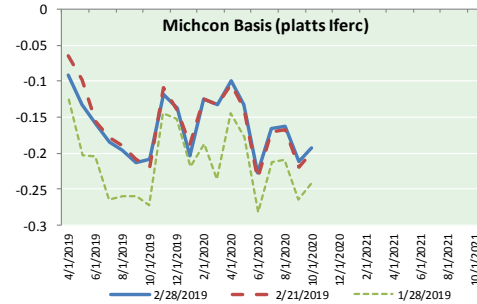
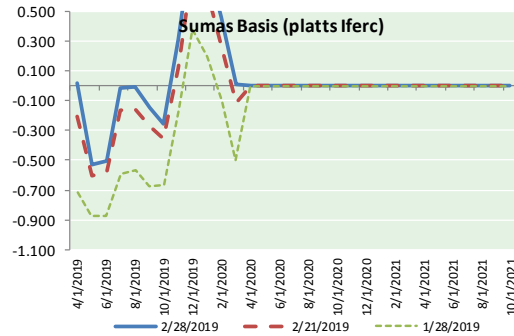
24 HOUR PRECIPITATION





NATURAL GAS NEWS

NATURAL GAS BASIS FUTURES, HENRY HUB SPOT PRICES, AND FORWARD CURVE



NYMEX WTI Delivery Month Average (\$/bbl) (Excluding Weekends and Holidays)

Month: March 2019

Day	Price	Day	Price
1	16	16	16
2	17	17	17
3	18	18	18
4	19	19	19
5	20	20	20
6	21	21	21
7	22	22	22
8	23	23	23
9	24	24	24
10	25	25	25
11	26	26	26
12	27	27	27
13	28	28	28
14	29	29	29
15	30	30	30
	31	31	31

Average (Mar) #DIV/0!
(through 02/28/2019)

Average (Feb) 55.0360

Average (Jan) 51.5505

CME NG Option Prices

ATM Call

Month	Strike	Close	Imp Vol
May-19			
Jun-19	2.850	0.092	20.6
Jul-19			
Aug-19			
Sep-19			

CME NG Option Prices

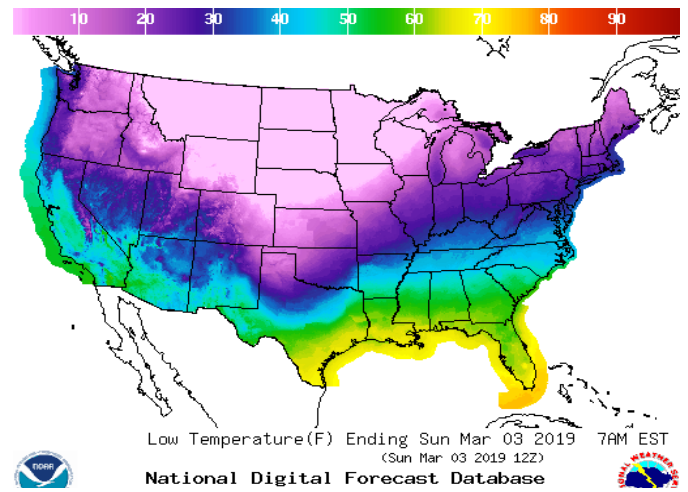
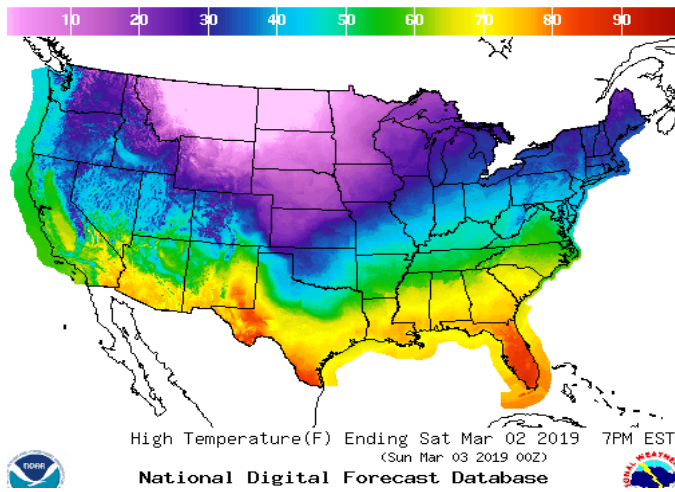
ATM Put

Month	Strike	Close	Imp Vol
May-19			
Jun-19	2.850	0.108	24.3
Jul-19			
Aug-19			
Sep-19			

WEATHER – HIGH / LOW TEMPERATURE SATURDAY

HIGH Temperature

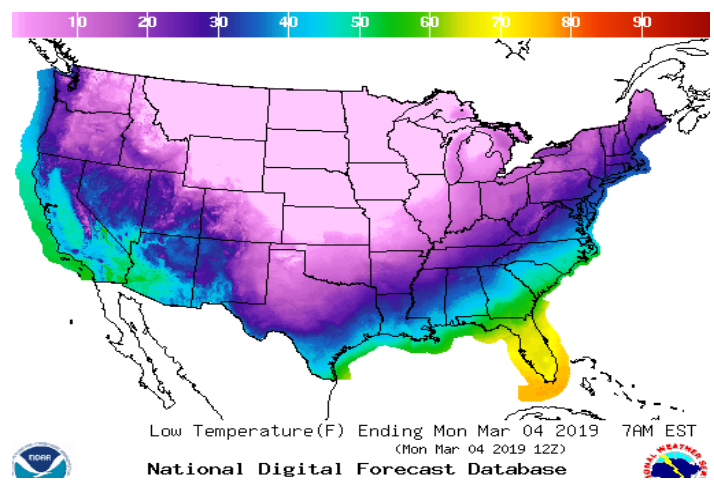
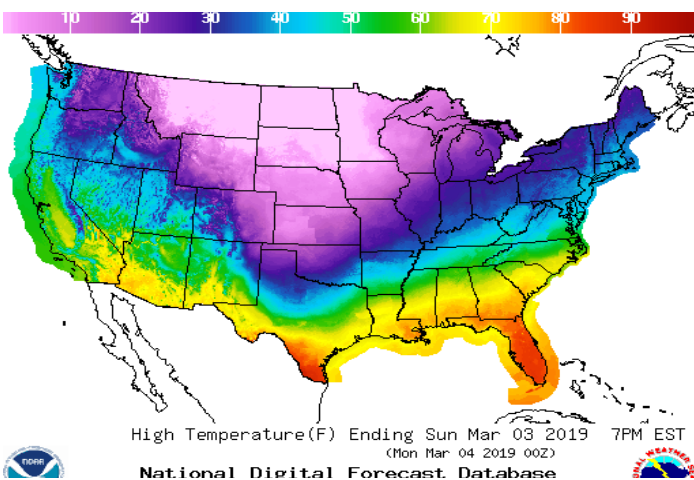
LOW Temperature



WEATHER – HIGH / LOW TEMPERATURE SUNDAY

Temperature

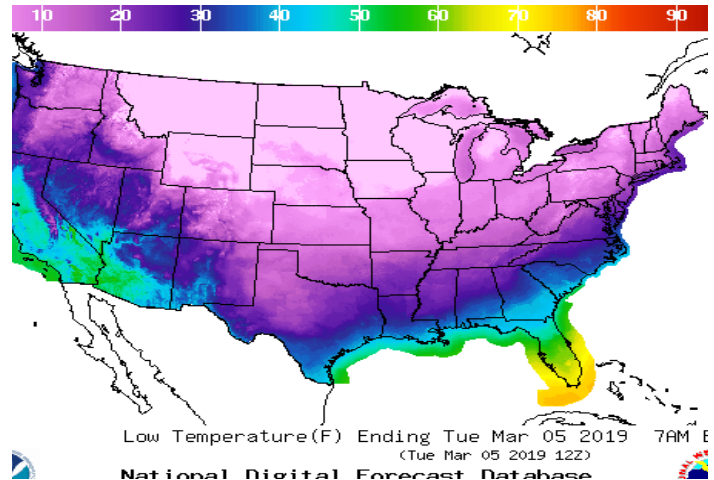
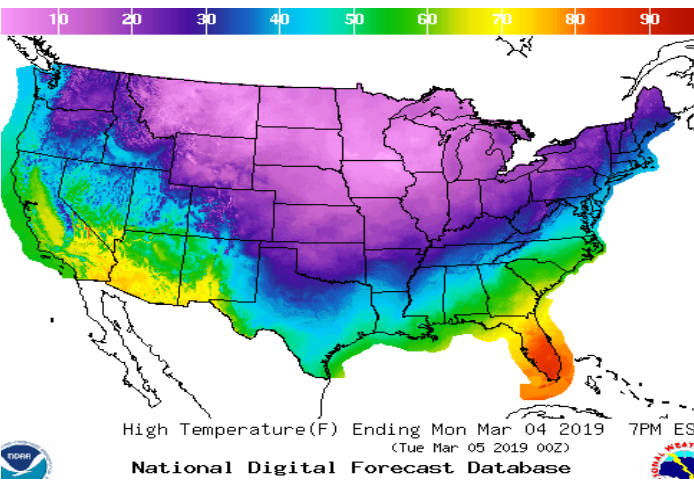
Precipitation



WEATHER – HIGH / LOW TEMPERATURE MONDAY

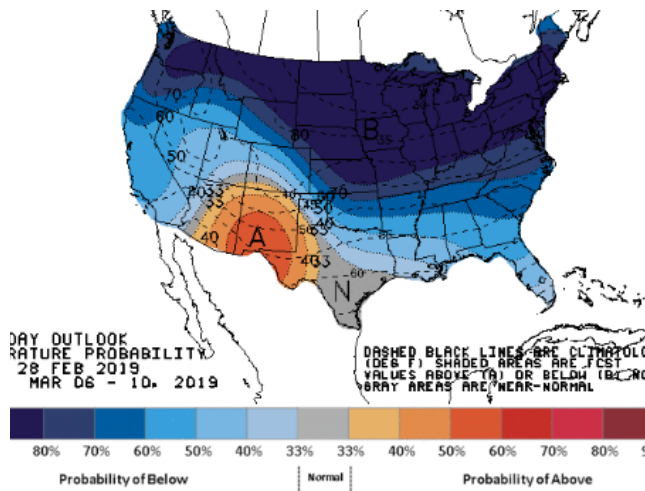
Temperature

Precipitation

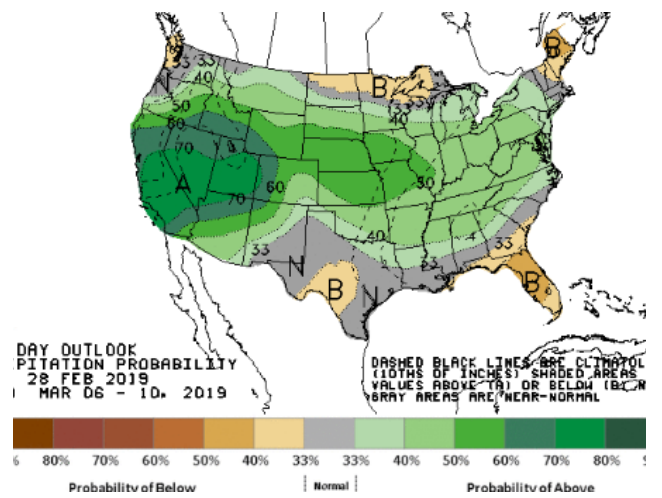


WEATHER – 6 TO 10 DAY OUTLOOK – NOAA

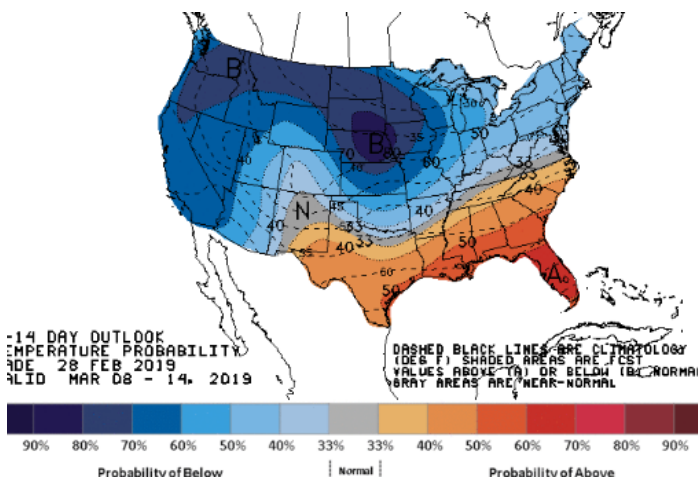
HIGH Temperature



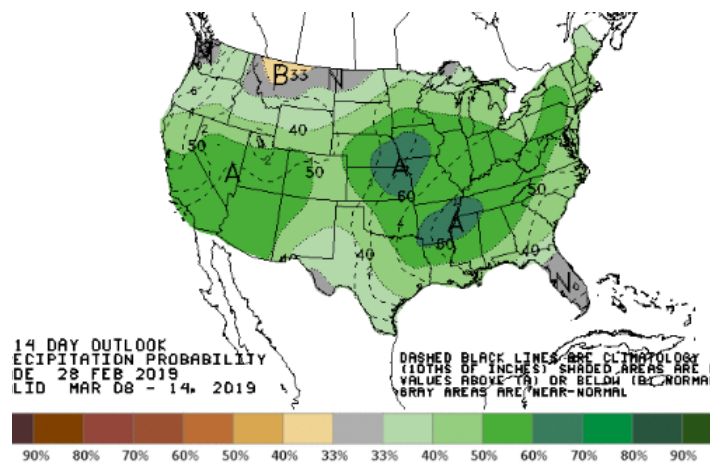
LOW Temperature



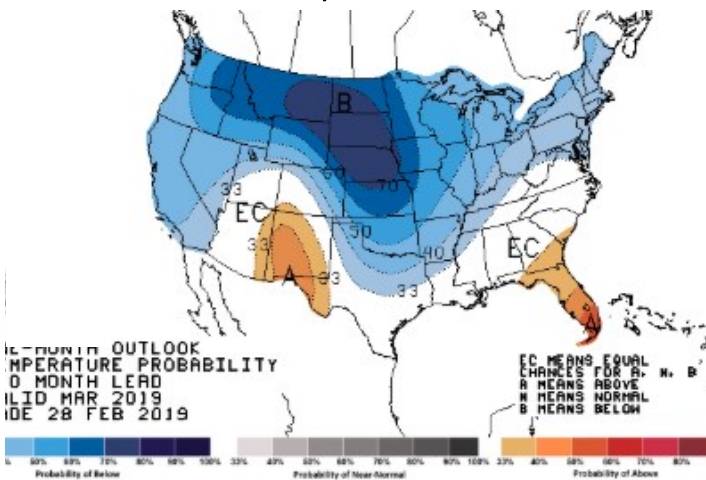
WEATHER – 8 TO 14 DAY OUTLOOK – NOAA
Temperature



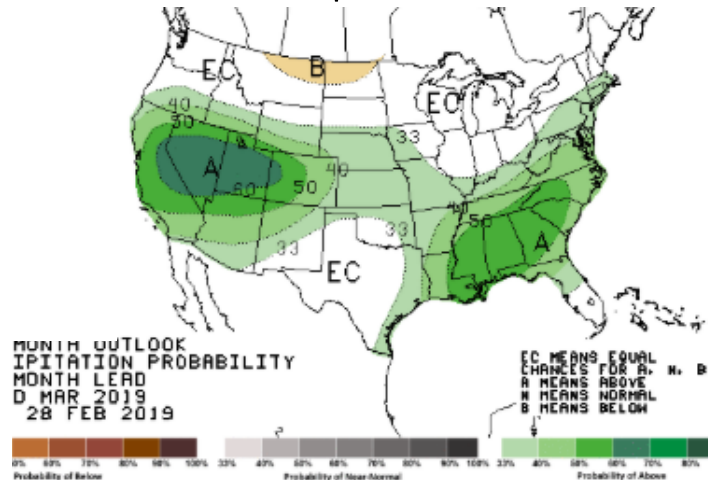
Precipitation



WEATHER – 30 DAY OUTLOOK – NOAA
Temperature

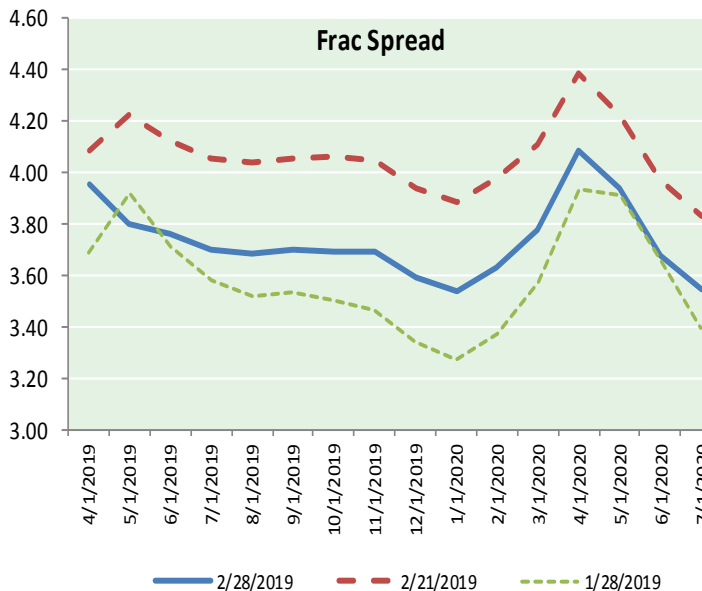
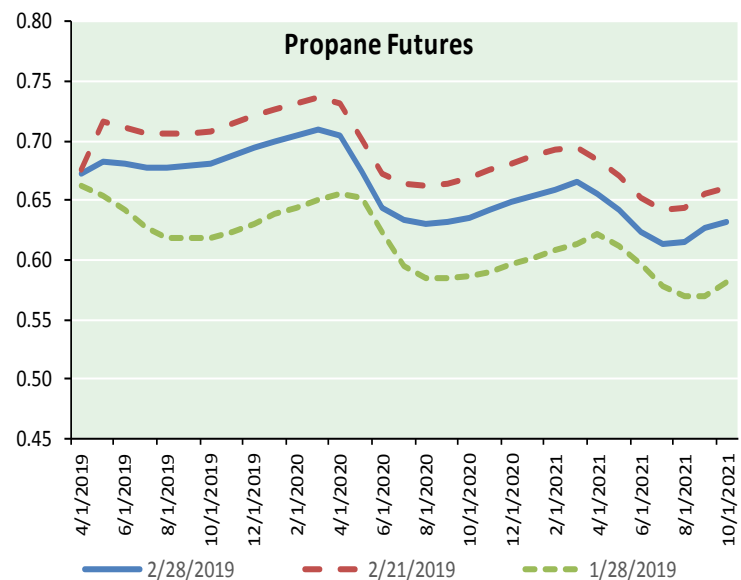
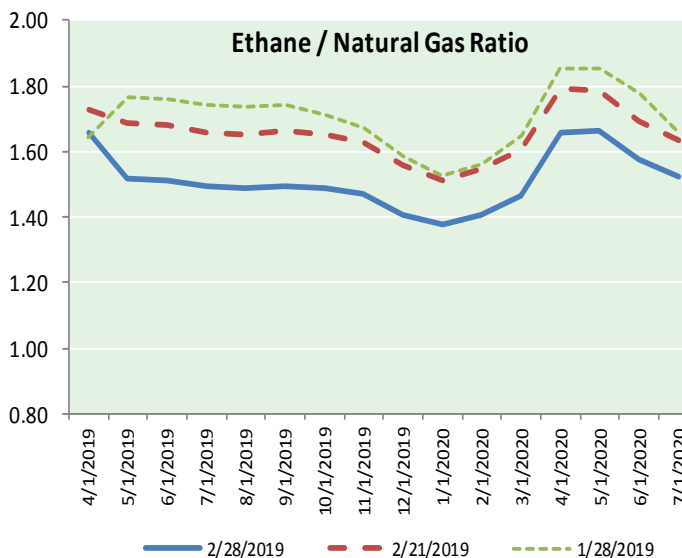
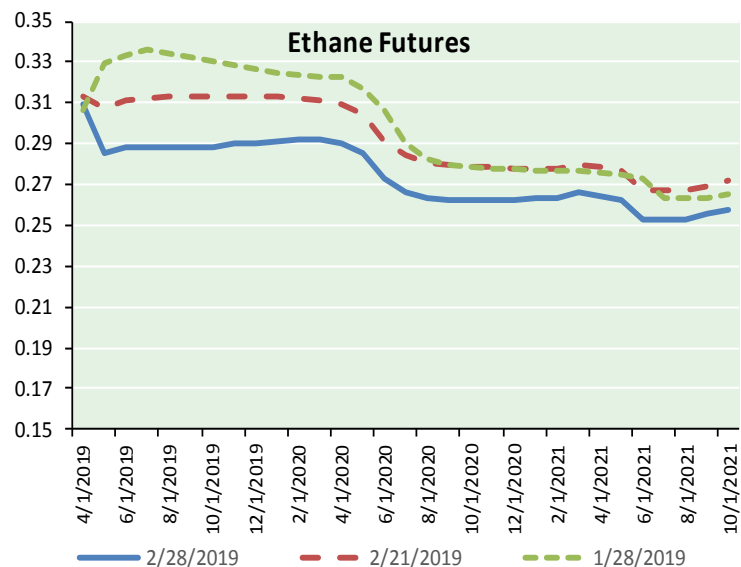


Precipitation





ETHANE FUTURES, NG/ETHANE RATIO, PROPANE FUTURES, AND THE FRAC SPREAD



CME Future Prices

Month	Close	Change
Apr-19	0.309	(0.000)
May-19	0.285	(0.004)
Jun-19	0.288	(0.004)
Jul-19	0.289	(0.004)
Aug-19	0.289	(0.004)
Sep-19	0.289	(0.004)
Oct-19	0.289	(0.004)
Nov-19	0.290	(0.004)
Dec-19	0.291	(0.004)
Jan-20	0.291	(0.004)
Feb-20	0.292	(0.004)
Mar-20	0.293	(0.003)
1YR Strip	0.291	(0.004)

CME Future Prices

Propane (C3)
Non-LDH— Mont Belvieu

Month	Close	Change
Apr-19	0.672	(0.000)
May-19	0.682	(0.013)
Jun-19	0.681	(0.011)
Jul-19	0.678	(0.011)
Aug-19	0.678	(0.011)
Sep-19	0.679	(0.010)
Oct-19	0.681	(0.009)
Nov-19	0.688	(0.009)
Dec-19	0.694	(0.009)
Jan-20	0.699	(0.009)
Feb-20	0.704	(0.009)
Mar-20	0.709	(0.009)
1YR Strip	0.687	(0.009)

NATURAL GAS NEWS



Prompt WTI (CL) Crude

Daily Sentiment

BULLISH



RESISTANCE

57.62 & 58.03

SUPPORT

56.62 & 56.03

FOLLOW US ON TWITTER:



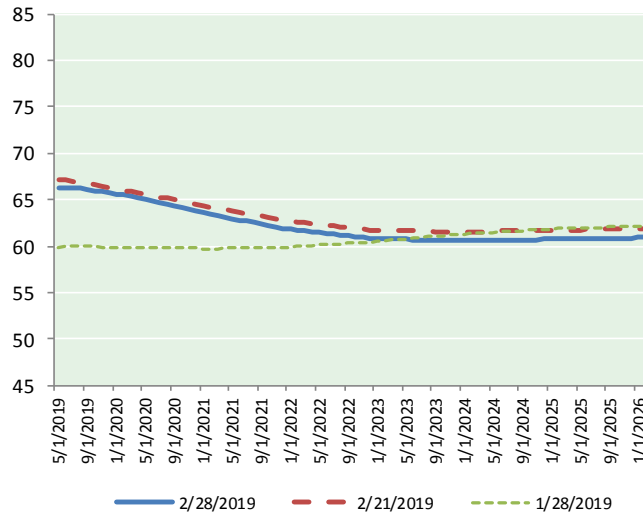
@MPG_NatGasNews

NYMEX Brent (BZ)

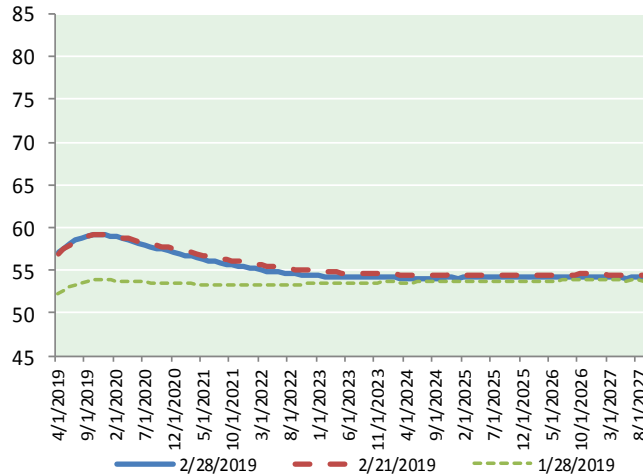
Futures

Month	Close	Change
Apr-19	57.22	0.28
May-19	57.61	0.24
Jun-19	58.06	0.19
Jul-19	58.49	0.16
Aug-19	58.83	0.13
Sep-19	59.06	0.10
Oct-19	59.17	0.07
Nov-19	59.18	0.05
Dec-19	59.13	0.05
Jan-20	59.02	0.03
Feb-20	58.88	0.00
Mar-20	58.72	(0.02)
Apr-20	58.56	(0.03)
May-20	58.38	(0.03)
Jun-20	58.21	(0.05)
Jul-20	58.00	(0.06)
Aug-20	57.81	(0.07)
Sep-20	57.64	(0.08)
Oct-20	57.47	(0.08)
Nov-20	57.34	(0.07)
Dec-20	57.21	(0.09)
Jan-21	57.01	(0.10)
Feb-21	56.80	(0.12)
Mar-21	56.63	(0.11)
1YR Strip	58.61	0.11
2019	58.53	0.14
5YR Strip	56.12	(0.05)

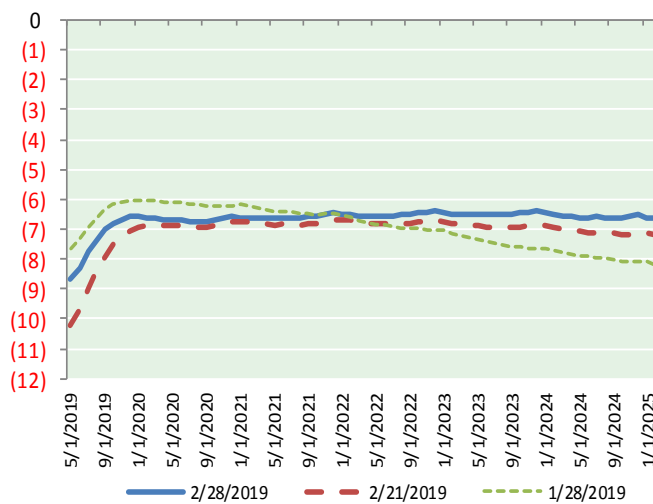
BRENT CRUDE FORWARD CURVE



WTI CRUDE FORWARD CURVE



WTI-BRENT SPREAD



FRAC Spread

Specifications

Ethane : 42% 66,500 btu/g
 Propane: 28% 90,830 btu/g
 Butane: 11% 102,916 btu/g
 Iso-Butane: 6% 98,935 btu/g
 Natural Gasoline: 13%
 115,021 btu/g

Prompt NGL Futures

	Apr-19	Close	Change
Butane	0.841	0.000	
Iso-Butane	0.868	0.001	
Nat Gasoline	1.160	(0.000)	

NYMEX WTI (CL) Futures

Month	Close	Change
May-19	66.31	(0.27)
Jun-19	66.33	(0.24)
Jul-19	66.23	(0.22)
Aug-19	66.18	(0.20)
Sep-19	66.09	(0.20)
Oct-19	65.97	(0.19)
Nov-19	65.86	(0.16)
Dec-19	65.72	(0.15)
Jan-20	65.60	(0.14)
Feb-20	65.48	(0.13)
Mar-20	65.35	(0.13)
Apr-20	65.22	(0.13)
May-20	65.07	(0.13)
Jun-20	64.89	(0.13)
Jul-20	64.73	(0.13)
Aug-20	64.55	(0.13)
Sep-20	64.37	(0.13)
Oct-20	64.19	(0.13)
Nov-20	63.98	(0.12)
Dec-20	63.78	(0.12)
Jan-21	63.62	(0.12)
Feb-21	63.44	(0.14)
Mar-21	63.28	(0.14)
Apr-21	63.12	(0.14)
1YR Strip	65.86	(0.18)
2019	66.09	(0.20)
5YR Strip	62.70	(0.15)