

# NATURAL GAS



JUNE 8, 2018

## Prior Day's NYMEX Jul-18 Contract (CT)



## NYMEX NG Futures

Month	Close	Change
Jul-18	2.930	0.034
Aug-18	2.939	0.030
Sep-18	2.924	0.029
Oct-18	2.935	0.031
Nov-18	2.978	0.033
Dec-18	3.084	0.032
Jan-19	3.169	0.033
Feb-19	3.136	0.035
Mar-19	3.034	0.037
Apr-19	2.654	0.017
May-19	2.611	0.016
Jun-19	2.638	0.016
Jul-19	2.668	0.014
Aug-19	2.676	0.014
Sep-19	2.663	0.014
Oct-19	2.683	0.012
Nov-19	2.735	0.010
Dec-19	2.862	0.006
Jan-20	2.959	0.003
Feb-20	2.924	0.003
Mar-20	2.829	0.003
Apr-20	2.555	0.001
May-20	2.529	(0.001)
Jun-20	2.559	(0.002)
1YR Strip	2.919	0.029
2018	2.965	0.032
5YR Strip	2.724	(0.003)

## IN THE NEWS

Columbia Gas force majeure upends Appalachia natural gas prices— Platts reported: A pipeline rupture and explosion early Thursday morning in Marshall County, West Virginia on Trans-Canada's Columbia Gas Transmission system caused a force majeure on the pipeline's Leach XPress. The outage has a number of implications for prices, flows, and production. There is no

- **Columbia Gas force majeure upends Appalachia natural gas prices**
- **Gas glut in West Texas sparks a quandary: How much of it should be burned off?**

timeline for a return to service. In Thursday trading Columbia Gas, Appalachia saw an 11-cent climb to \$2.77/MMBtu, according to Platts preliminary pricing data. Meanwhile, Tetco M-2 fell 21 cents and Dominion South Point dropped 26 cents. This is the first time in seven trading sessions that Columbia Gas, Appalachia has moved opposite of both Tetco M-2 and Dominion South. Balance-of-the-month prices could also see opposite movement for Columbia Gas, Appalachia versus Tetco M-2 and Dominion South. For gas day Friday and until further notice the affected section's capacity was set to zero. For more on this story visit [platts.com](http://platts.com) or click <https://bit.ly/2kW6ZuL>

Gas glut in West Texas sparks a quandary: How much of it should be burned off?— Los Angeles Times reported: Texas is facing a burning question that's pitting the state's economy against its environment, and oil drillers against each other. With natural gas pipelines in the Permian Basin reaching 98% of capacity, Texas is weighing whether to keep intact or loosen strict state regulations that limit flaring, the process used by drillers to burn off excess gas pumped up along with their oil. Now the limit for individual wells is 45 days. After that, without a rare-granted exemption, the gas must be piped away or the well must close. Shut wells mean less revenue for companies and the state, at a time when oil prices and production are surging while regional gas prices are in a tailspin. For more on this story visit [latimes.com](http://latimes.com) or click <https://lat.ms/2Hw4bgW>

## 12 MONTH CANDLESTICK (WEEKLY)



## Prompt Natural Gas (NG) Daily Sentiment

**BULLISH**



RESISTANCE

2.98 & 3.03

SUPPORT

2.89 & 2.85

## Trading Summary

### NATURAL GAS

Futures	Close	Change
NG	2.930	0.034
Volume	603,184	(542,111)
Open Int.	1,558,094	(10,712)

### CRUDE AND GASOLINE

Futures	Close	Change
Crude	65.95	1.22
RBOB	2.1148	0.0448
Crude/NG	22.51	0.16

### METALS

Futures	Close	Change
Gold	1,298.70	(0.50)

### EQUITIES

Exchange	Close	Change
DOW	25,241.41	95.02
S&P 500	-1,308.65	(1.98)

### CURRENCY

Currency	Close	Change
EUR/USD	1.1745	(0.0055)
USD/CND	1.2405	0.0022

## Contact Us



### Mansfield Energy Corp

1025 Airport Pkwy  
Gainesville, GA 30501

[www.mansfield.energy](http://www.mansfield.energy)

[info@mansfieldoil.com](mailto:info@mansfieldoil.com)

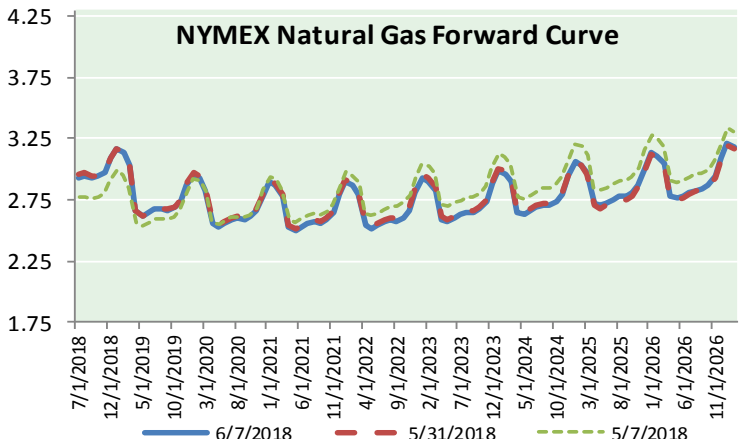
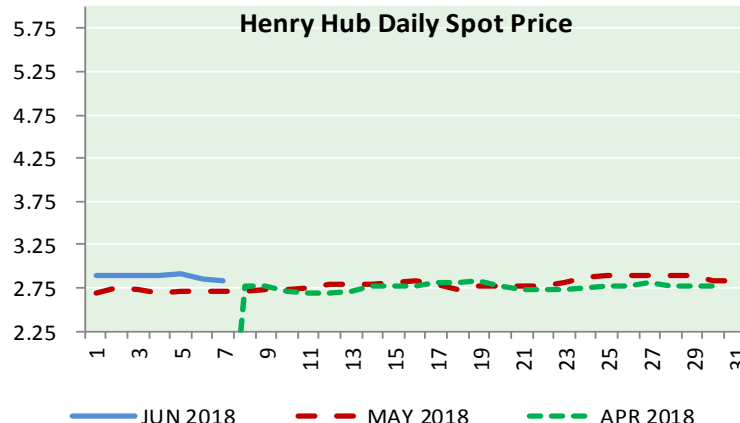
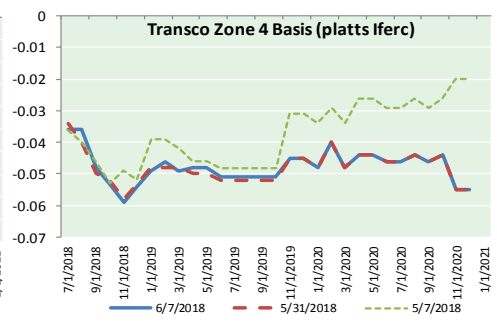
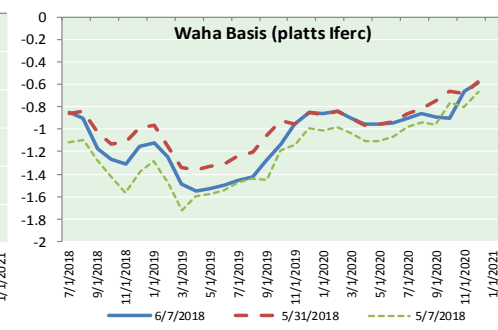
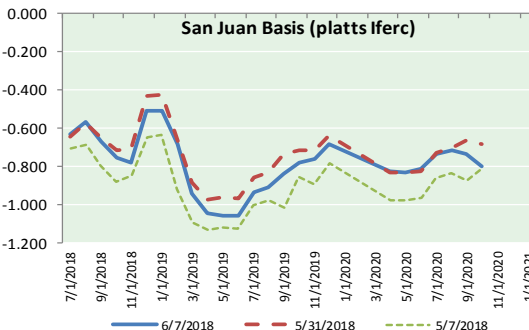
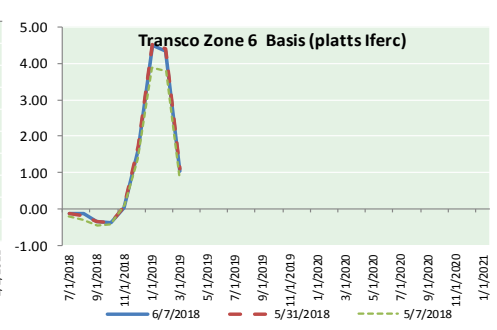
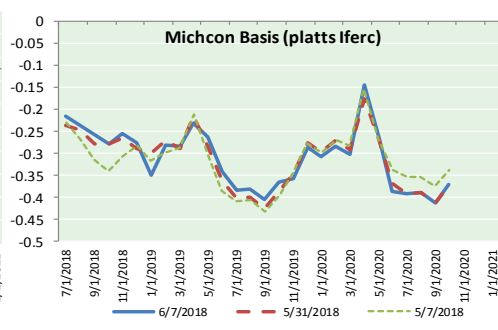
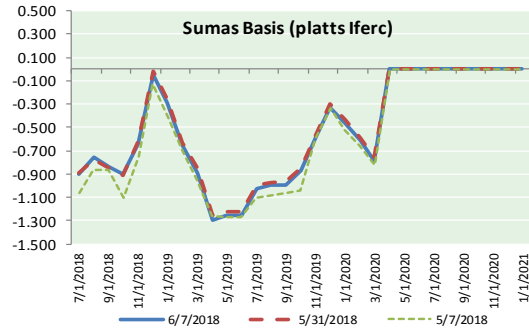
Phone: (800) 695-6626





# NATURAL GAS NEWS

## NATURAL GAS BASIS FUTURES, HENRY HUB SPOT PRICES, AND FORWARD CURVE



### NYMEX WTI Delivery

#### Month Average (\$/bbl)

(Excluding Weekends and Holidays)

Month: June 2018

Day	Price	Day	Price
1	65.81	16	
2		17	
3		18	
4	64.75	19	
5	65.52	20	
6	64.73	21	
7	65.95	22	
8		23	
9		24	
10		25	
11		26	
12		27	
13		28	
14		29	
15		30	

Average (Jun) 65.3520  
(through 06/07/2018)  
Average (May) 69.9832  
Average (Apr) 66.3252

### CME NG Option Prices

#### ATM Call

Month	Strike	Close	Imp Vol
Aug-18			
Sep-18	2.900	0.074	18.7
Oct-18			
Nov-18			
Dec-18			

### CME NG Option Prices

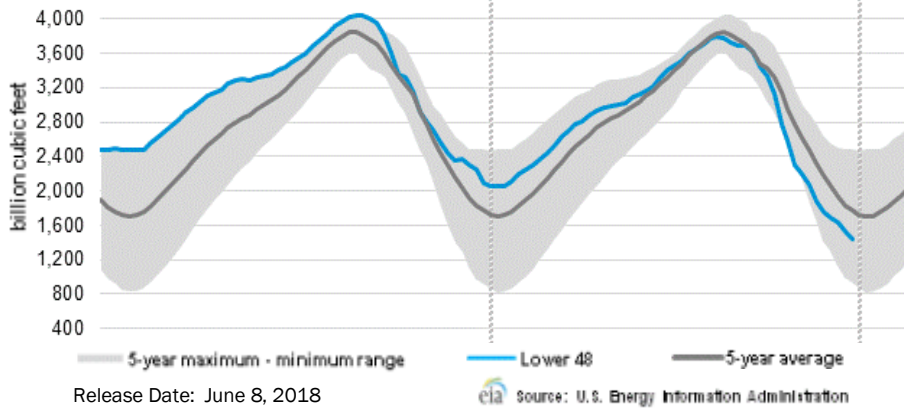
#### ATM Put

Month	Strike	Close	Imp Vol
Aug-18			
Sep-18	2.900	0.084	18.7
Oct-18			
Nov-18			
Dec-18			



**NATURAL GAS NEWS**

**WEEKLY GAS IN UNDERGROUND STORAGE WITH 5-YR RANGE**



**Rig Count**

Report Date: June 1, 2018

	Total	Change
US -	1060	+1
CN -	99	+18

**EIA Weekly NG Storage Actual and Surveys for June 8, 2018**

Released June 7, 2018

- Range (80) to (94)
- PIRA – (94)
- Citi Futures – (85)
- Reuters – (90)

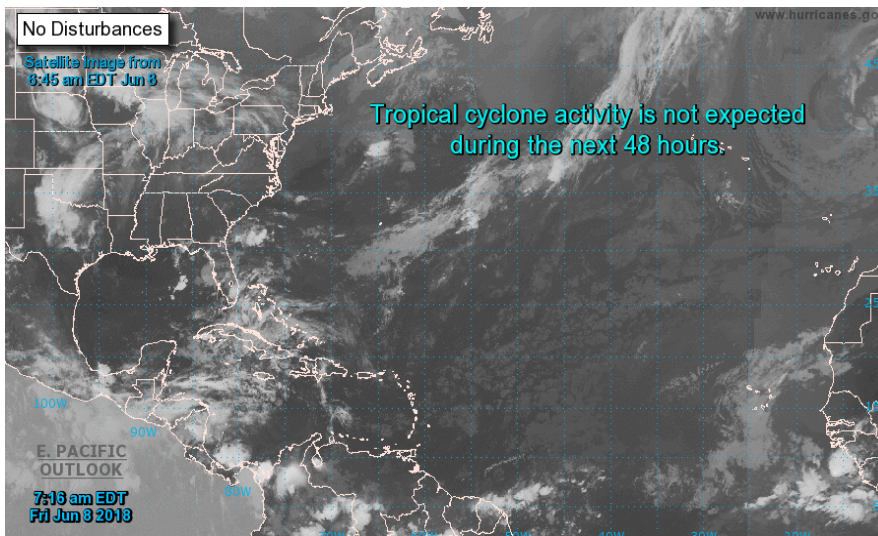
EIA ACTUAL – 92

**Total Working Gas In Storage**

**1,817 BCF**

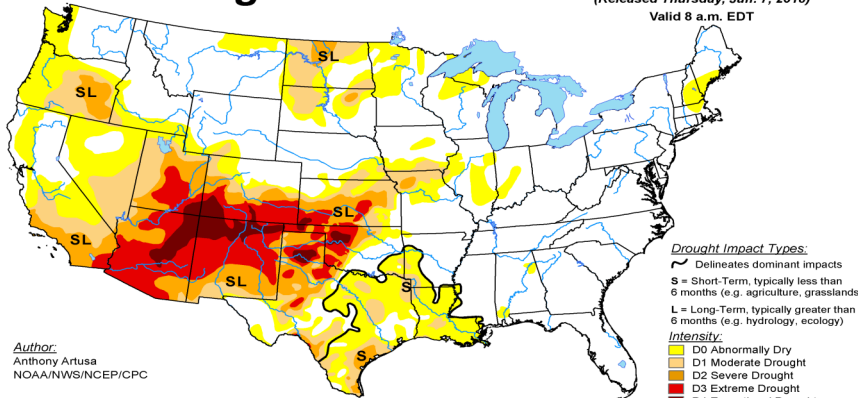
- 92 BCF (LAST WEEK)
- (799) BCF (LAST YEAR)
- (512) BCF (5-YR AVG)

**TROPICAL STORM ACTIVITY— ATLANTIC**

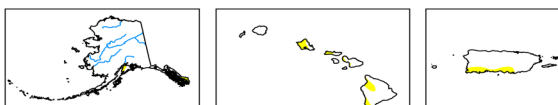


**U.S. Drought Monitor**

June 5, 2018  
 (Released Thursday, Jun. 7, 2018)  
 Valid 8 a.m. EDT



Author:  
 Anthony Artusa  
 NOAA/NWS/NCEP/CPC



USDA, NDMC, NOAA logos and URL: <http://droughtmonitor.unl.edu/>

**U.S. Natural Gas Supply Gas Week 5/31– 6/6**

- Average daily values (BCF/D):
- Last Year (BCF/d)
- Dry Production – +72.5
- Total Supply – +78.1
- Last Week (BCF/d)
- Dry Production – +80.1
- Total Supply – +86.6

[NEXT REPORT ON Jun 15]

**U.S. Natural Gas Demand Gas Week 5/31– 6/6**

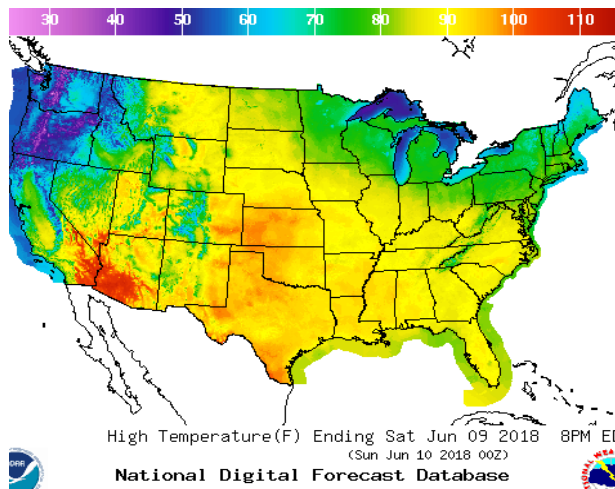
- Average daily values (BCF/D):
- Last Year (BCF/d)
- Power – +26.1
- Total Demand – +66.1
- Last Week (BCF/d)
- Power – +29.9
- Total Demand – +70.2

[NEXT REPORT ON Jun 8]

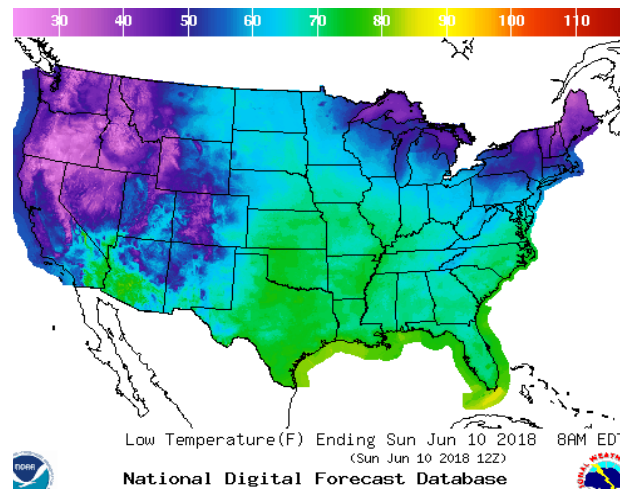


WEATHER – HIGH / LOW TEMPERATURE SATURDAY

HIGH Temperature

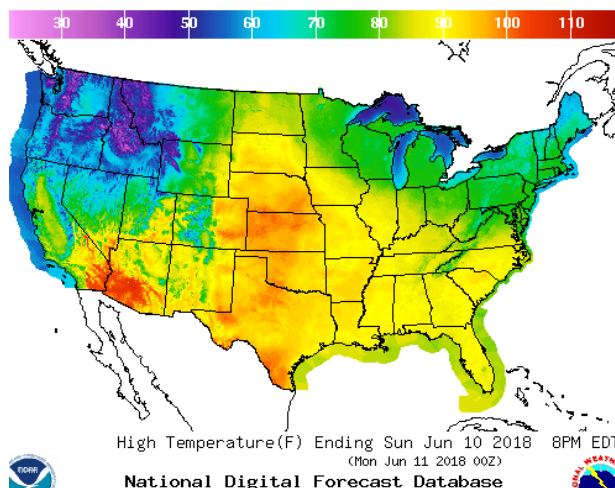


LOW Temperature

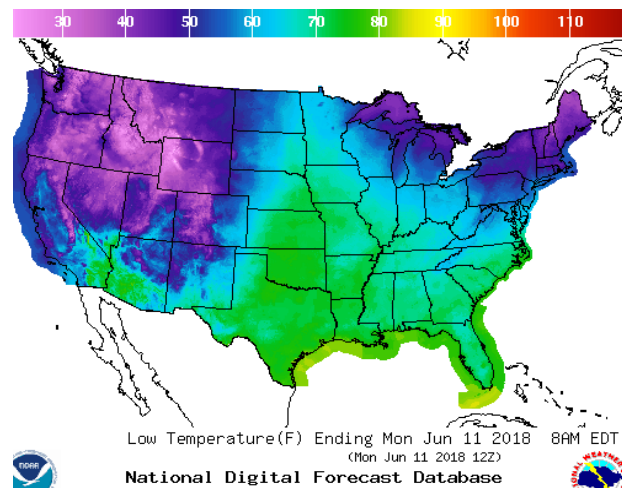


WEATHER – HIGH / LOW TEMPERATURE SUNDAY

HIGH Temperature

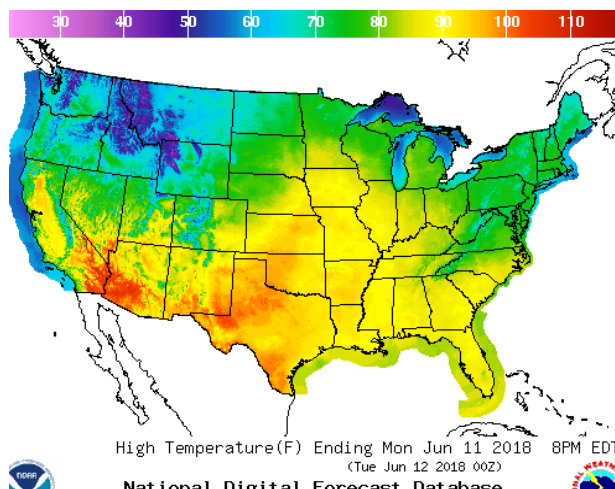


LOW Temperature

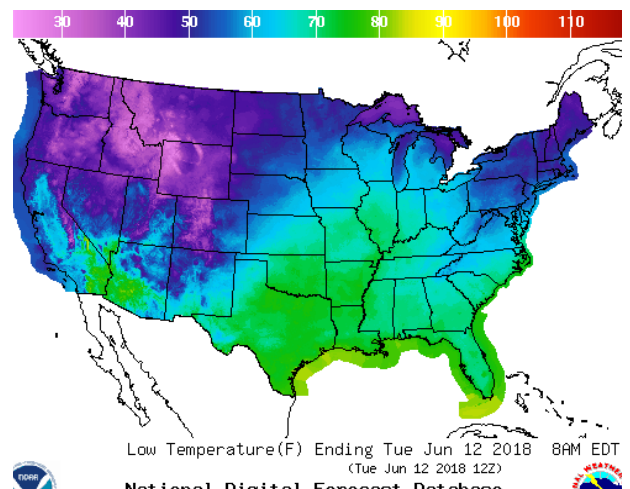


WEATHER – HIGH / LOW TEMPERATURE MONDAY

HIGH Temperature

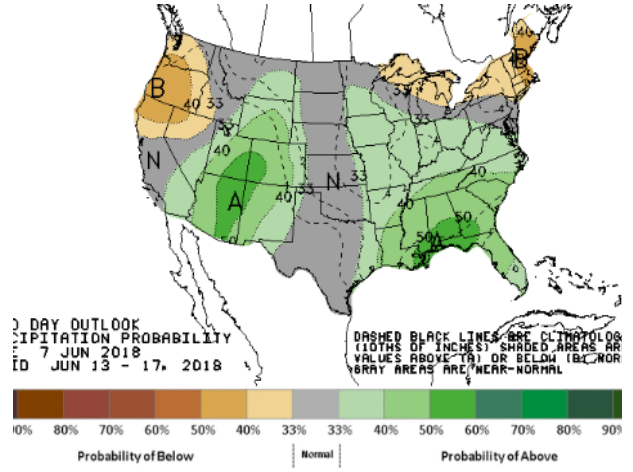
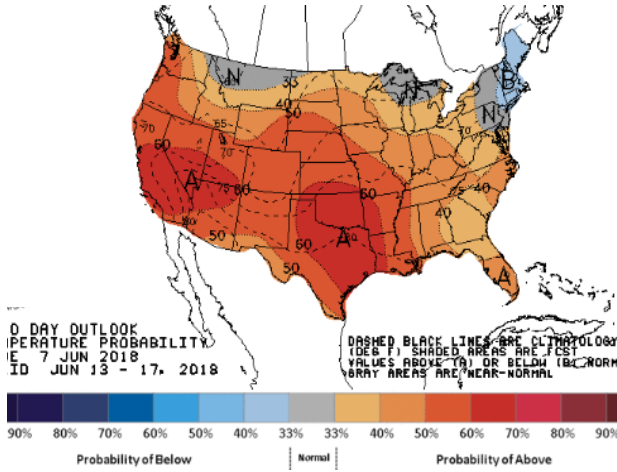


LOW Temperature



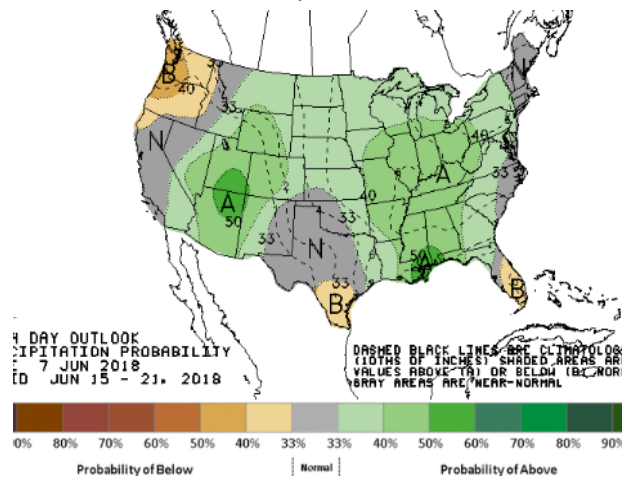
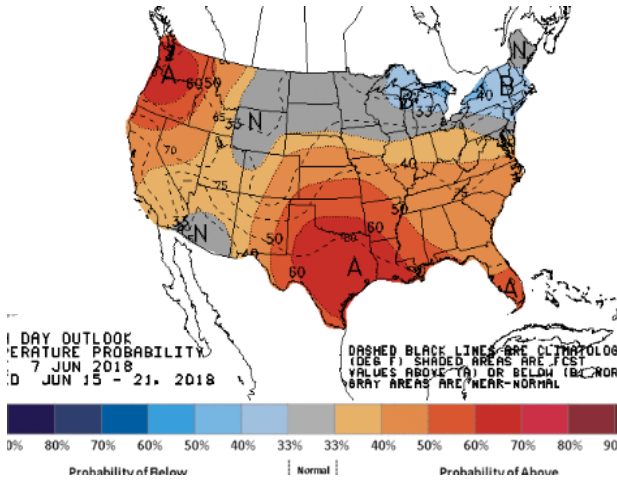
WEATHER — 6 TO 10 DAY OUTLOOK — NOAA  
Temperature

Precipitation



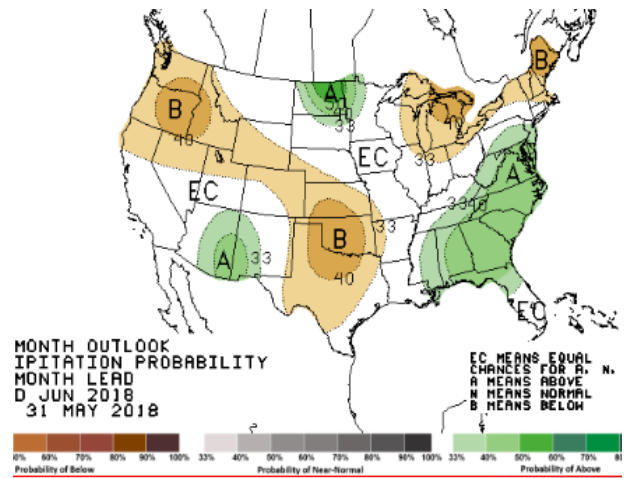
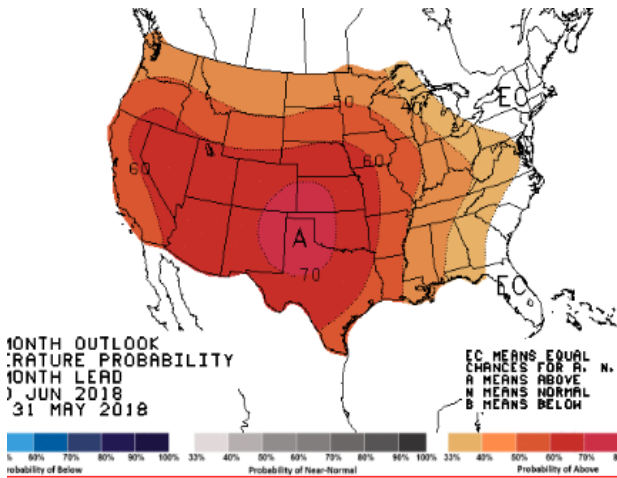
WEATHER — 8 TO 14 DAY OUTLOOK — NOAA  
Temperature

Precipitation



WEATHER — 30 DAY OUTLOOK — NOAA  
Temperature

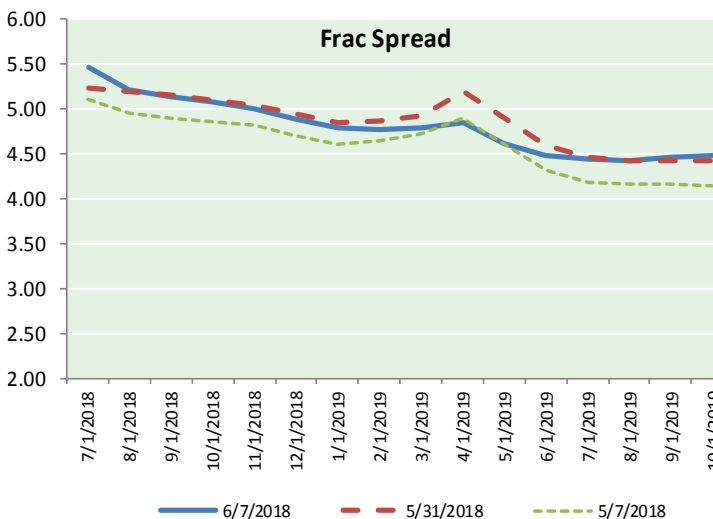
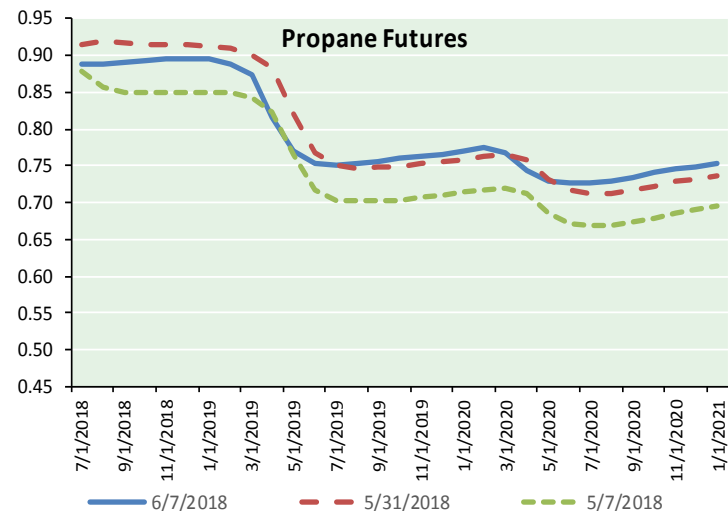
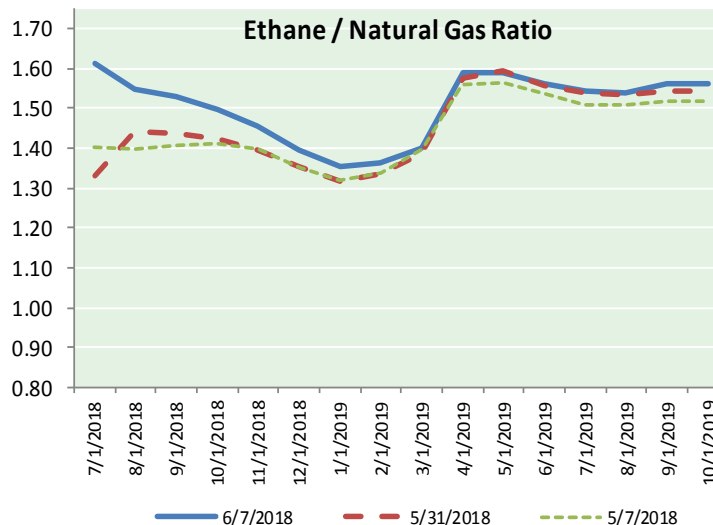
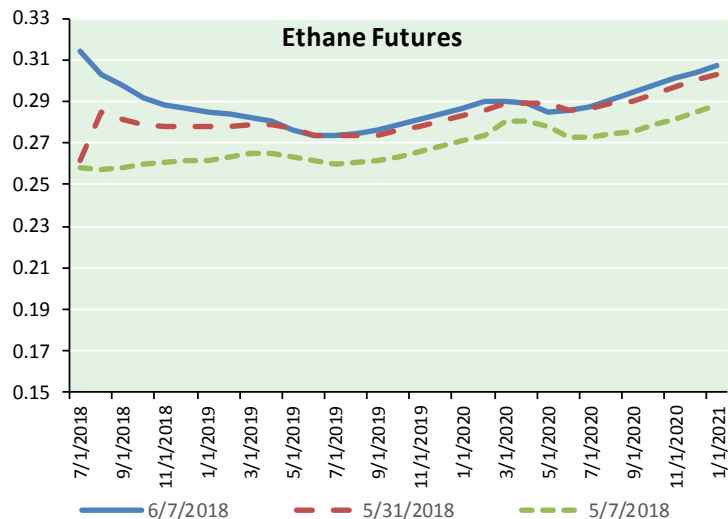
Precipitation



# NATURAL GAS NEWS



## ETHANE FUTURES, NG/ETHANE RATIO, PROPANE FUTURES, AND THE FRAC SPREAD



### CME Future Prices

#### Ethane (C2)

##### Non-LDH— Mont Belvieu

Month	Close	Change
Jul-18	0.314	0.002
Aug-18	0.303	0.000
Sep-18	0.298	0.003
Oct-18	0.292	0.004
Nov-18	0.288	0.003
Dec-18	0.286	0.002
Jan-19	0.285	0.001
Feb-19	0.284	0.001
Mar-19	0.283	0.000
Apr-19	0.280	0.000
May-19	0.276	0.001
Jun-19	0.274	0.000

1YR Strip 0.289 0.001

### CME Future Prices

#### Propane (C3)

##### Non-LDH— Mont Belvieu

Month	Close	Change
Jul-18	0.889	0.020
Aug-18	0.888	0.024
Sep-18	0.890	0.023
Oct-18	0.893	0.023
Nov-18	0.895	0.024
Dec-18	0.895	0.023
Jan-19	0.895	0.023
Feb-19	0.888	0.024
Mar-19	0.874	0.023
Apr-19	0.817	0.025
May-19	0.770	0.025
Jun-19	0.754	0.024

1YR Strip 0.862 0.023

# NATURAL GAS NEWS



## Prompt WTI (CL) Crude

### Daily Sentiment

**BEARISH**



RESISTANCE

66.41 & 66.87

SUPPORT

65.15 & 64.35

### FOLLOW US ON TWITTER:



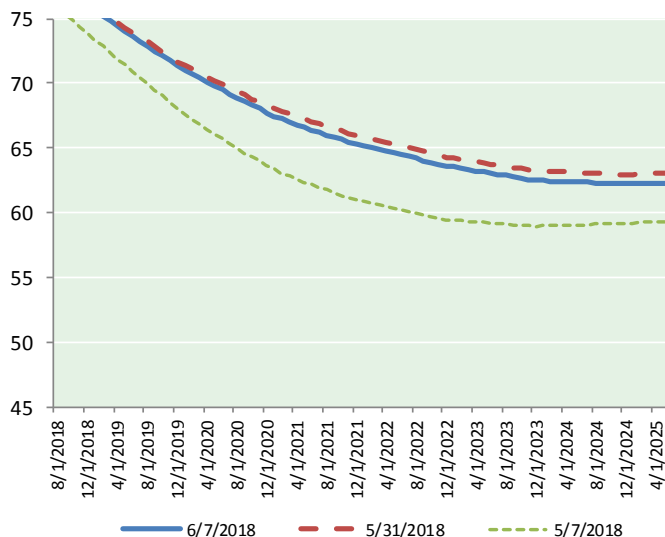
@MPG\_NatGasNews

## NYMEX Brent (BZ)

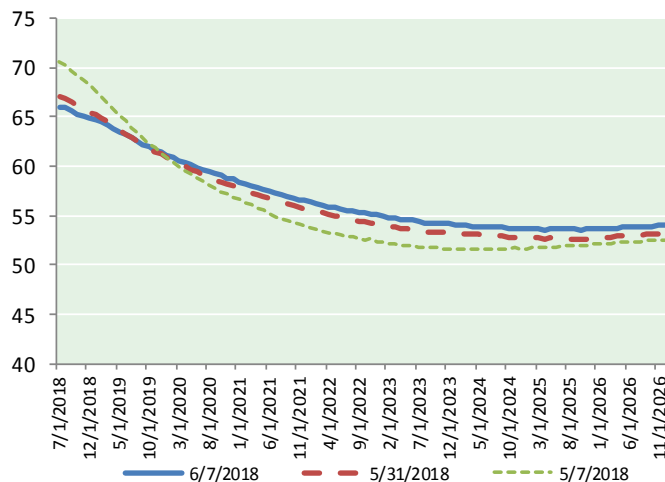
### Futures

Month	Close	Change
Aug-18	77.32	1.96
Sep-18	76.98	2.02
Oct-18	76.60	2.02
Nov-18	76.28	2.00
Dec-18	75.96	1.97
Jan-19	75.61	1.95
Feb-19	75.23	1.91
Mar-19	74.84	1.86
Apr-19	74.45	1.81
May-19	74.04	1.75
Jun-19	73.61	1.69
Jul-19	73.24	1.64
Aug-19	72.87	1.58
Sep-19	72.48	1.53
Oct-19	72.13	1.50
Nov-19	71.77	1.46
Dec-19	71.36	1.42
Jan-20	71.02	1.39
Feb-20	70.71	1.35
Mar-20	70.40	1.31
Apr-20	70.08	1.27
May-20	69.79	1.23
Jun-20	69.49	1.18
Jul-20	69.18	1.16
1YR Strip	75.35	1.88
2018	76.63	1.99
5YR Strip	68.32	1.11

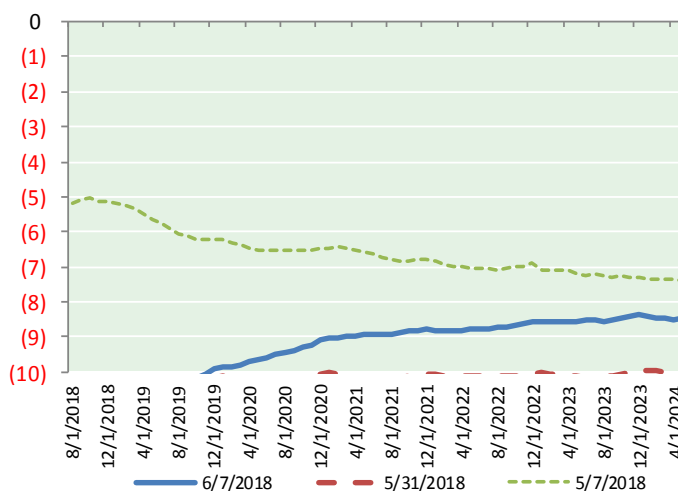
## BRENT CRUDE FORWARD CURVE



## WTI CRUDE FORWARD CURVE



## WTI-BRENT SPREAD



## FRAC Spread

### Specifications

Ethane : 42%	66,500 btu/g
Propane: 28%	90,830 btu/g
Butane: 11%	102,916 btu/g
Iso-Butane: 6%	98,935 btu/g
Natural Gasoline: 13%	115,021 btu/g

## Prompt NGL Futures

### (\$/gallon)

	Jul-18	Close	Change
Butane	1.042	0.026	
Iso-Butane	1.379	0.010	
Nat Gasoline	1.524	0.032	

## NYMEX WTI (CL) Futures

Month	Close	Change
Jul-18	65.95	1.22
Aug-18	65.89	1.19
Sep-18	65.63	1.11
Oct-18	65.30	1.03
Nov-18	65.14	1.01
Dec-18	64.95	1.00
Jan-19	64.73	0.97
Feb-19	64.44	0.97
Mar-19	64.14	0.96
Apr-19	63.82	0.93
May-19	63.50	0.91
Jun-19	63.18	0.88
Jul-19	62.86	0.86
Aug-19	62.53	0.83
Sep-19	62.22	0.79
Oct-19	61.95	0.75
Nov-19	61.68	0.72
Dec-19	61.45	0.72
Jan-20	61.14	0.70
Feb-20	60.85	0.67
Mar-20	60.59	0.63
Apr-20	60.35	0.61
May-20	60.13	0.59
Jun-20	59.91	0.59
1YR Strip	64.72	1.02
2018	65.48	1.09
5YR Strip	59.09	0.64