

# NATURAL GAS



JUNE 7, 2018

## Prior Day's NYMEX Jul-18 Contract (CT)



## NYMEX NG Futures

Month	Close	Change
Jul-18	2.896	0.006
Aug-18	2.909	0.002
Sep-18	2.895	0.003
Oct-18	2.904	0.004
Nov-18	2.945	0.005
Dec-18	3.052	0.006
Jan-19	3.136	0.005
Feb-19	3.101	0.004
Mar-19	2.997	0.003
Apr-19	2.637	0.002
May-19	2.595	0.001
Jun-19	2.622	0.000
Jul-19	2.654	0.000
Aug-19	2.662	0.001
Sep-19	2.649	0.001
Oct-19	2.671	0.002
Nov-19	2.725	0.002
Dec-19	2.856	0.000
Jan-20	2.956	0.000
Feb-20	2.921	0.000
Mar-20	2.826	(0.002)
Apr-20	2.554	0.000
May-20	2.530	0.000
Jun-20	2.561	0.000
1YR Strip	2.891	0.003
2018	2.934	0.004
5YR Strip	2.727	0.007

## IN THE NEWS

**The Permian Has A Natural Gas Problem**— Oil Price reported: Analysts continue to focus on the surging oil production in the Permian and looming takeaway capacity bottlenecks that could slow down the oil growth in the biggest U.S. shale play. But constraints have also emerged in natural gas takeaway infrastructure, with pipelines nearly full and natural gas prices in West Tex-

- **The Permian Has A Natural Gas Problem**
- **Turning trash to natural gas; Waste Management invests in Louisville**

as diving on oversupply. Pipelines will not be able to handle all the excess associated gas from the soaring oil production, so the Railroad Commission of Texas is currently considering whether to keep the strict gas flaring limits or to loosen them. The Commission issues flare permits for 45 days at a time, for a maximum limit of 180 days. Currently, the natural gas pipelines in the Permian are 98 percent full, according to Bloomberg estimates. For more on this story visit [oilprice.com](http://oilprice.com) or click <https://bit.ly/2Lq9mkA>

**Turning trash to natural gas; Waste Management invests in Louisville**— WV Metro News reported: The TransCanada Midstream Pipeline exploded Thursday morning in Marshall County, authorities said. The explosion occurred just after 4 a.m. triggering a fire, which has now burned out. Marshall County Office of Emergency Management Director Tom Hart said there are no injuries and no property damage. The explosion happened in a rural area of the county known as Nixon Ridge. Hart said the fire burned itself out after the flow of gas was interrupted. "The line was shut off... the fire is out," Hart told MetroNews. Nearby residents reported feeling the blast and seeing the fire. Hart said officials are waiting for the fog to lift and then they will survey the area with a drone to determine the damage. TransCanada spokesman Scott Castleman issued the following statement: At approximately 4:15 a.m. Eastern Time on June 7, 2018 there was an issue involving a natural gas pipeline on TransCanada's Columbia Gas Transmission System in Marshall County, West Virginia. For more on this story visit [wvmetronews.com](http://wvmetronews.com) or click <https://bit.ly/2sE56ae>

## 12 MONTH CANDLESTICK (WEEKLY)



## Prompt Natural Gas (NG) Daily Sentiment

**BULLISH**



RESISTANCE

2.91 & 2.93

SUPPORT

2.89 & 2.86

## Trading Summary

### NATURAL GAS

Futures	Close	Change
NG	2.896	0.006
Volume	297,020	(238,752)
Open Int.	1,569,025	(2,039)

### CRUDE AND GASOLINE

Futures	Close	Change
Crude	64.73	(0.79)
RBOB	2.0700	(0.0362)
Crude/NG	22.35	(0.32)

### METALS

Futures	Close	Change
Gold	1,297.10	5.40

### EQUITIES

Exchange	Close	Change
DOW	25,146.39	346.41
S&P 500	-1,213.63	23.55

### CURRENCY

Currency	Close	Change
EUR/USD	1.1832	0.0058
USD/CND	1.2405	0.0002

## Contact Us



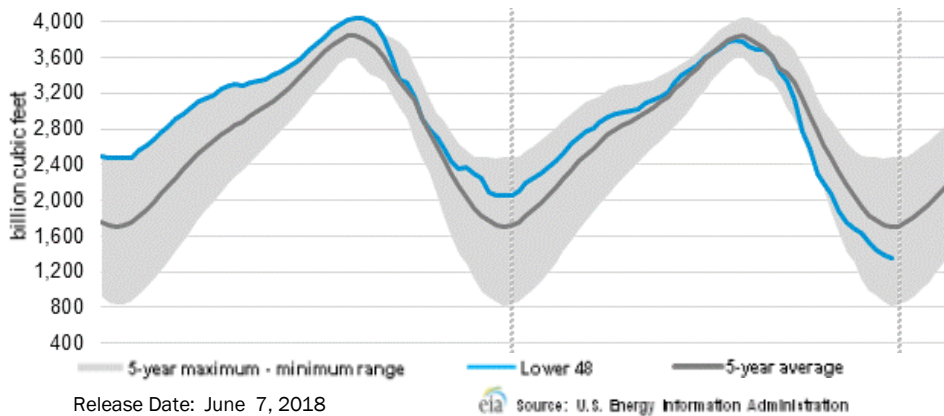
**Mansfield Energy Corp**  
1025 Airport Pkwy  
Gainesville, GA 30501  
[www.mansfield.energy](http://www.mansfield.energy)  
[info@mansfieldoil.com](mailto:info@mansfieldoil.com)

Phone: (800) 695-6626





WEEKLY GAS IN UNDERGROUND STORAGE WITH 5-YR RANGE



Rig Count

Report Date: June 1, 2018

	Total	Change
US -	1060	+1
CN -	99	+18

EIA Weekly NG Storage Actual and Surveys for June 1, 2018

Released May 31, 2018

Range (75) to (97)

PIRA – (104)

Citi Futures – (101)

Reuters – (107)

EIA ACTUAL – 96

Total Working Gas In Storage

1,725 BCF

96 BCF (LAST WEEK)

(788) BCF (LAST YEAR)

(500) BCF (5-YR AVG)

U.S. Natural Gas Supply Gas Week 5/24– 5/30

Average daily values (BCF/D):

Last Year (BCF/d)

Dry Production – +81.1

Total Supply – +71.9

Last Week (BCF/d)

Dry Production – +79.7

Total Supply – +86.0

[NEXT REPORT ON Jun 8]

U.S. Natural Gas Demand Gas Week 5/24– 5/30

Average daily values (BCF/D):

Last Year (BCF/d)

Power – +23.7

Total Demand – +65.4

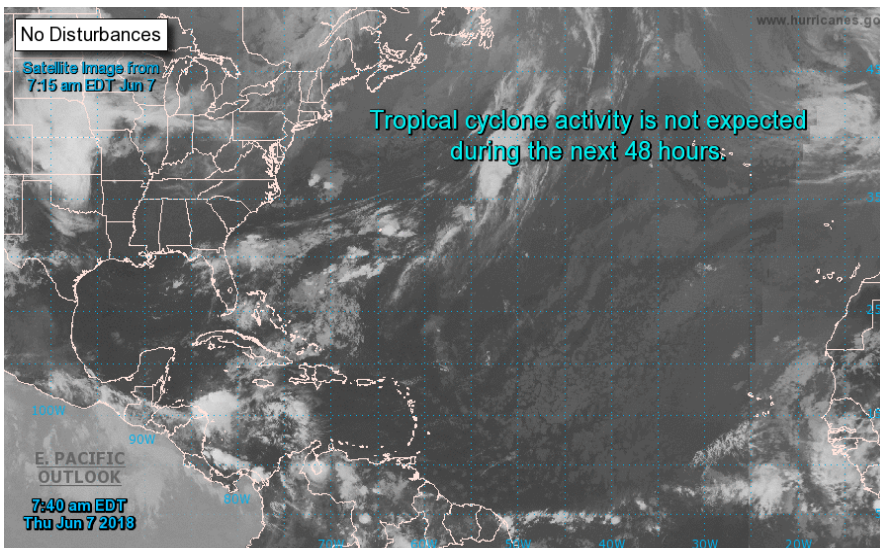
Last Week (BCF/d)

Power – +27.9

Total Demand – +70.1

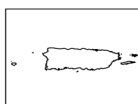
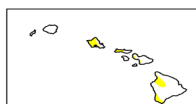
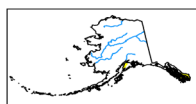
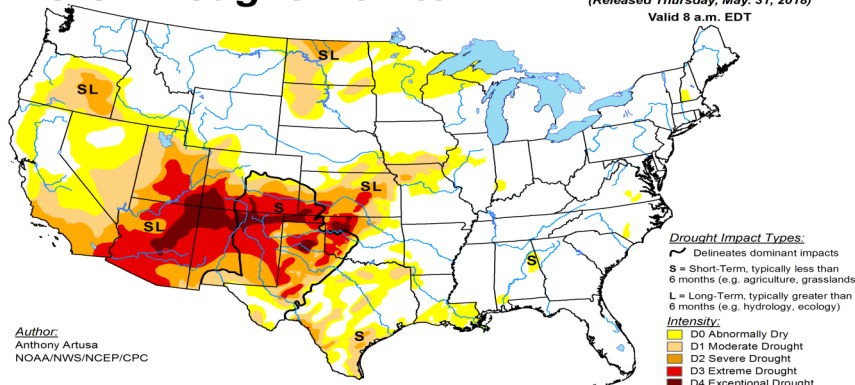
[NEXT REPORT ON Jun 8]

TROPICAL STORM ACTIVITY– ATLANTIC



U.S. Drought Monitor

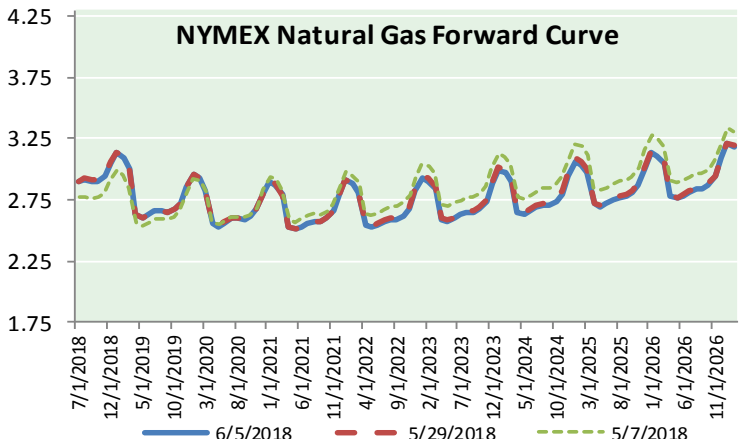
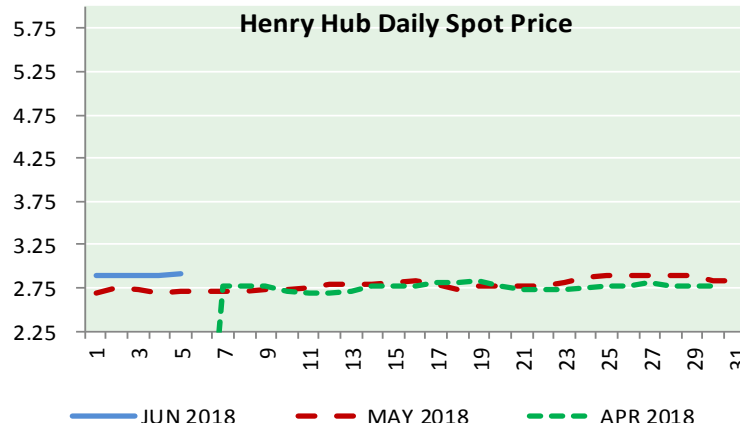
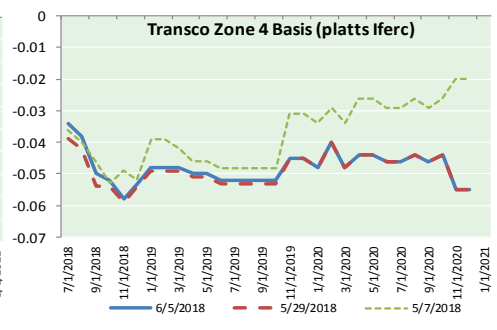
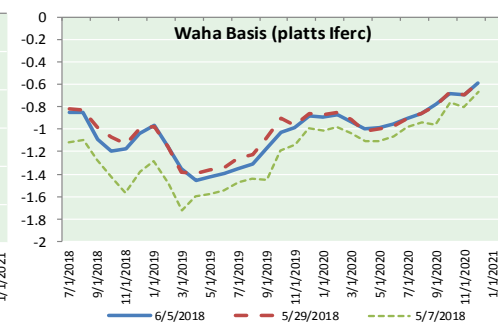
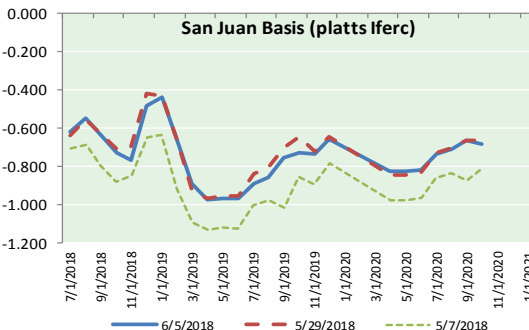
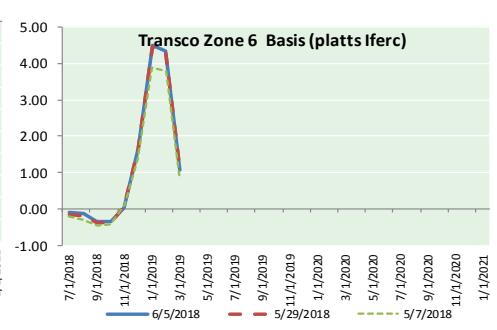
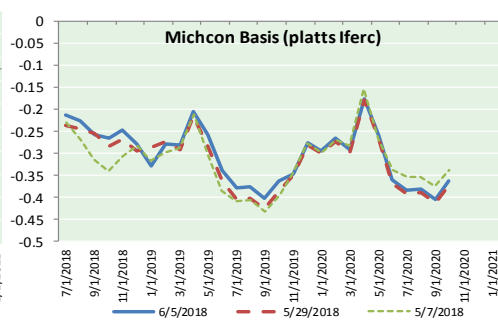
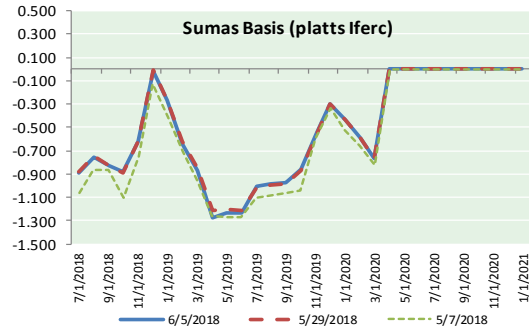
May 29, 2018  
 (Released Thursday, May 31, 2018)  
 Valid 8 a.m. EDT



<http://droughtmonitor.unl.edu/>



NATURAL GAS BASIS FUTURES, HENRY HUB SPOT PRICES, AND FORWARD CURVE



NYMEX WTI Delivery

Month Average (\$/bbl)

(Excluding Weekends and Holidays)

Month: June 2018

Day	Price	Day	Price
1	65.81	16	
2		17	
3		18	
4	64.75	19	
5	65.52	20	
6	64.73	21	
7		22	
8		23	
9		24	
10		25	
11		26	
12		27	
13		28	
14		29	
15		30	

Average (Jun) 65.2025  
(through 06/06/2018)

Average (May) 69.9832

Average (Apr) 66.3252

CME NG Option Prices

ATM Call

Month	Strike	Close	Imp Vol
Aug-18			
Sep-18	2.950	0.073	15.0
Oct-18			
Nov-18			
Dec-18			

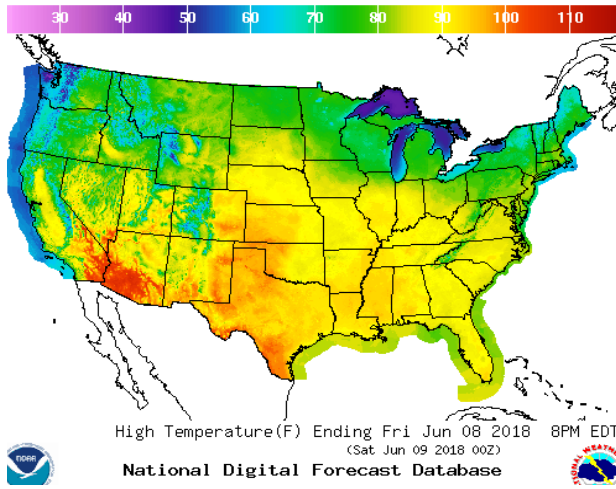
CME NG Option Prices

ATM Put

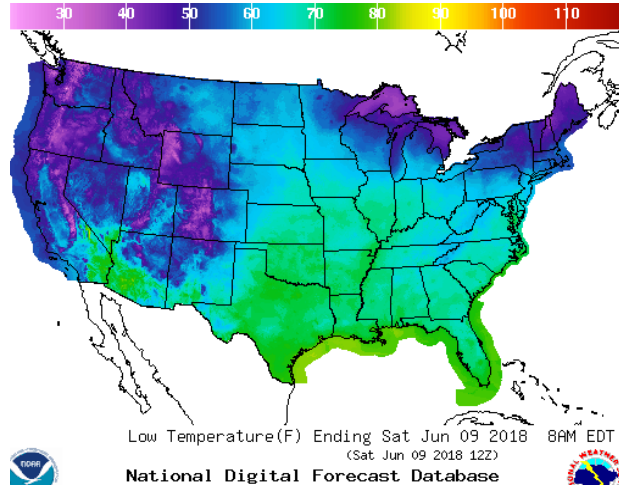
Month	Strike	Close	Imp Vol
Aug-18			
Sep-18	2.950	0.091	22.5
Oct-18			
Nov-18			
Dec-18			

WEATHER – HIGH / LOW TEMPERATURE TOMORROW

HIGH Temperature

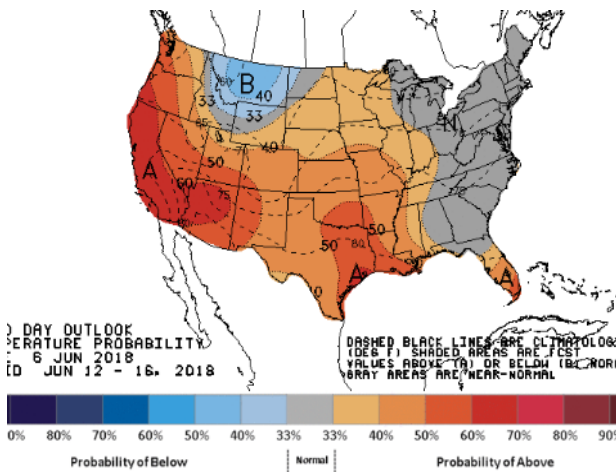


LOW Temperature

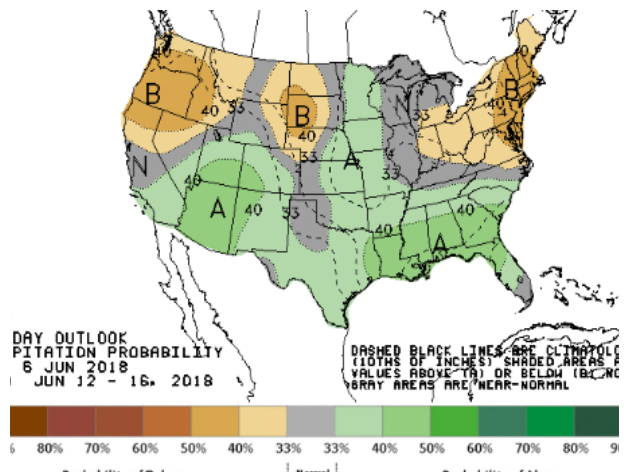


WEATHER – 6 TO 10 DAY OUTLOOK – NOAA

Temperature

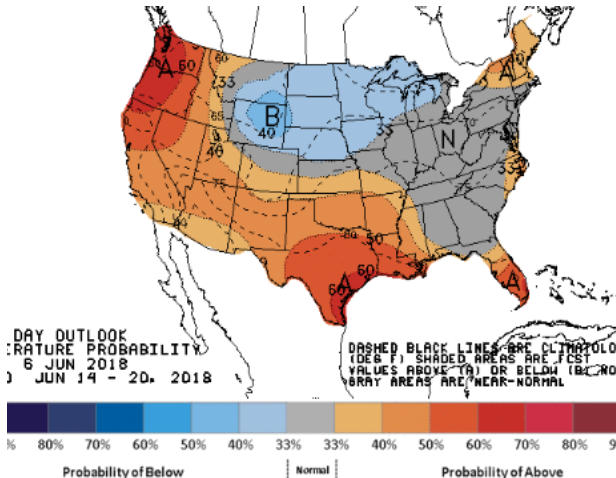


Precipitation

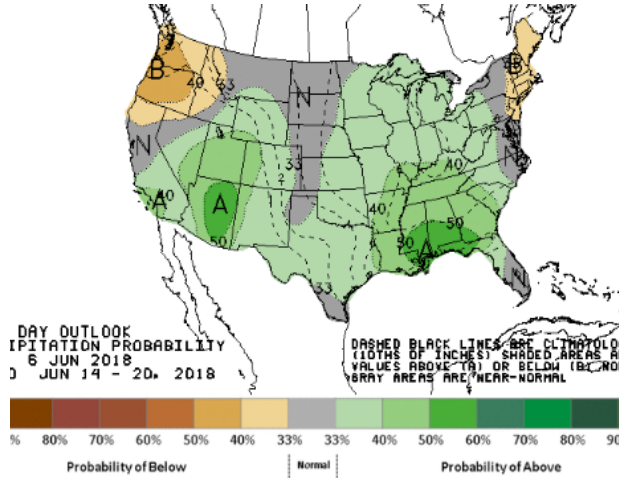


WEATHER – 8 TO 14 DAY OUTLOOK – NOAA

Temperature



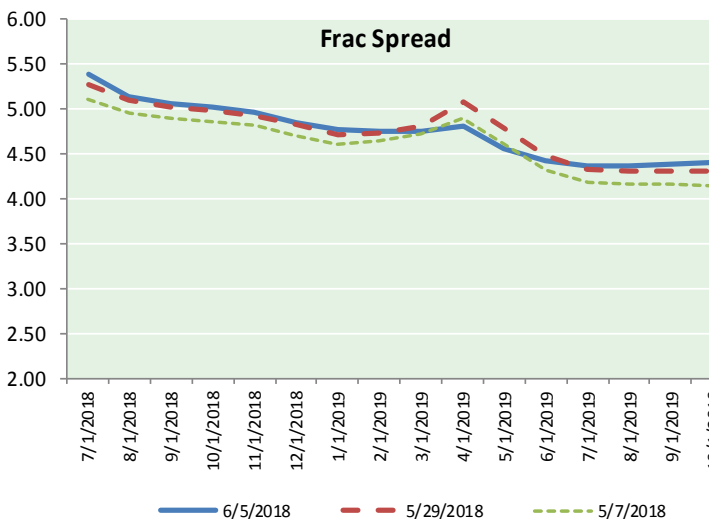
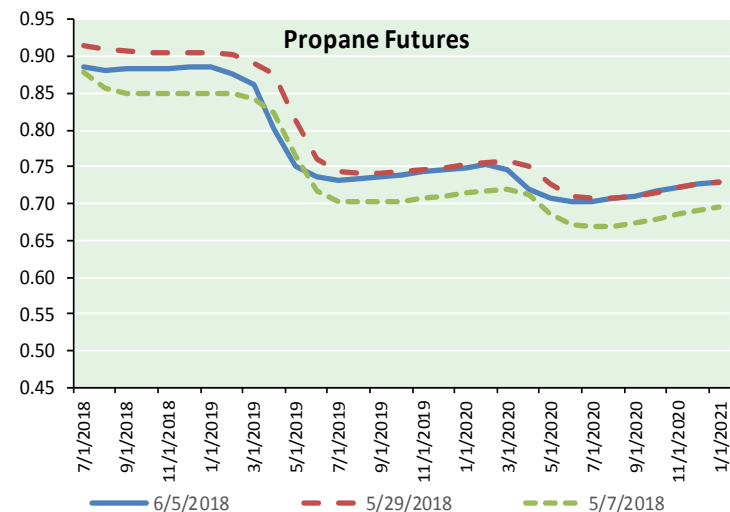
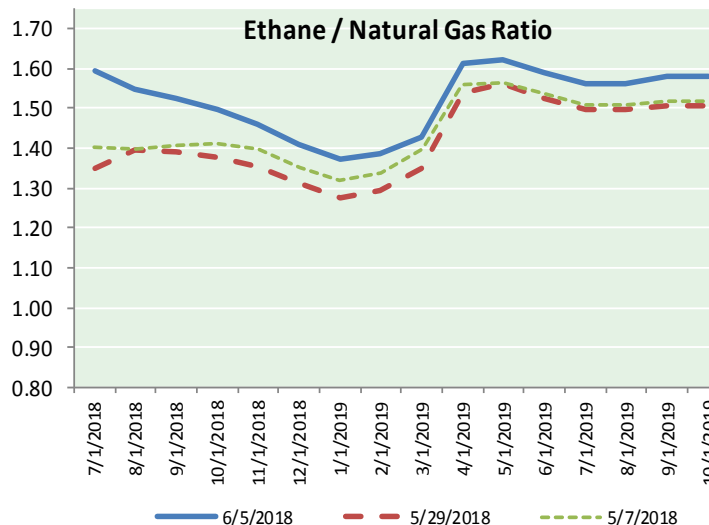
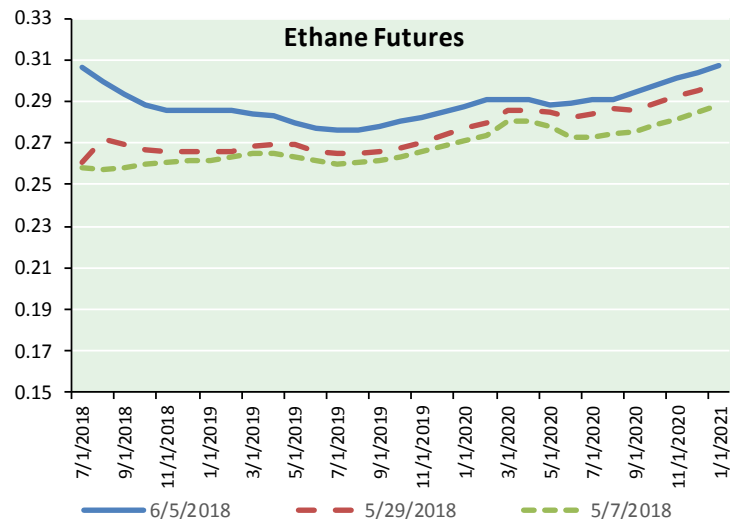
Precipitation



# NATURAL GAS NEWS



## ETHANE FUTURES, NG/ETHANE RATIO, PROPANE FUTURES, AND THE FRAC SPREAD



### CME Future Prices

#### Ethane (C2)

##### Non-LDH— Mont Belvieu

Month	Close	Change
Jul-18	0.306	0.008
Aug-18	0.299	0.007
Sep-18	0.293	0.005
Oct-18	0.288	0.005
Nov-18	0.285	0.003
Dec-18	0.285	0.003
Jan-19	0.285	0.003
Feb-19	0.285	0.003
Mar-19	0.284	0.003
Apr-19	0.283	0.003
May-19	0.280	0.003
Jun-19	0.277	0.002

1YR Strip 0.288 0.004

### CME Future Prices

#### Propane (C3)

##### Non-LDH— Mont Belvieu

Month	Close	Change
Jul-18	0.885	(0.013)
Aug-18	0.882	(0.013)
Sep-18	0.883	(0.012)
Oct-18	0.884	(0.010)
Nov-18	0.884	(0.010)
Dec-18	0.885	(0.008)
Jan-19	0.887	(0.005)
Feb-19	0.877	(0.004)
Mar-19	0.863	(0.003)
Apr-19	0.803	(0.002)
May-19	0.752	(0.001)
Jun-19	0.736	0.000

1YR Strip 0.852 (0.007)

# NATURAL GAS NEWS



## Prompt WTI (CL) Crude

### Daily Sentiment

**BEARISH**



RESISTANCE

65.70 & 66.68

SUPPORT

64.01 & 63.30

FOLLOW US ON TWITTER:



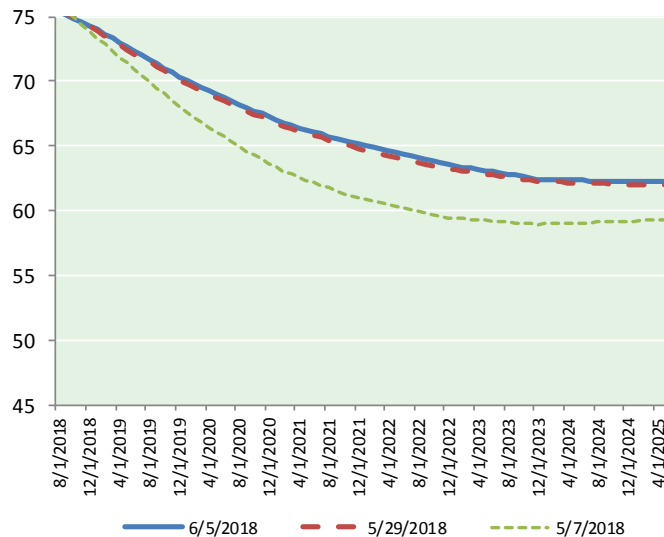
@MPG\_NatGasNews

## NYMEX Brent (BZ)

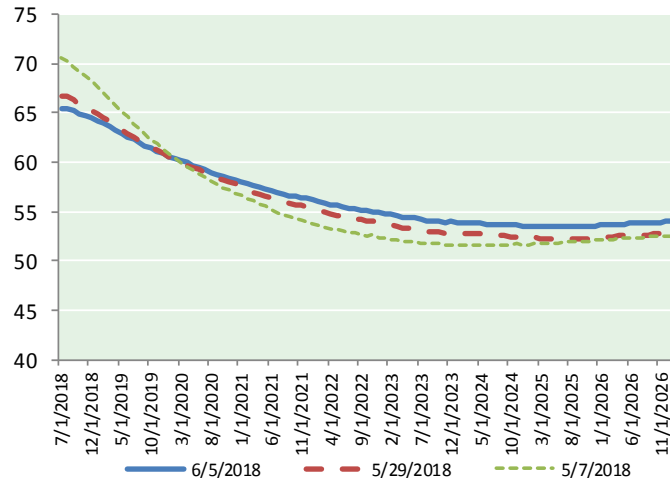
### Futures

Month	Close	Change
Aug-18	75.36	(0.02)
Sep-18	74.96	(0.17)
Oct-18	74.58	(0.27)
Nov-18	74.28	(0.32)
Dec-18	73.99	(0.34)
Jan-19	73.66	(0.35)
Feb-19	73.32	(0.35)
Mar-19	72.98	(0.36)
Apr-19	72.64	(0.37)
May-19	72.29	(0.37)
Jun-19	71.92	(0.38)
Jul-19	71.60	(0.40)
Aug-19	71.29	(0.40)
Sep-19	70.95	(0.40)
Oct-19	70.63	(0.40)
Nov-19	70.31	(0.40)
Dec-19	69.94	(0.40)
Jan-20	69.63	(0.40)
Feb-20	69.36	(0.41)
Mar-20	69.09	(0.41)
Apr-20	68.81	(0.42)
May-20	68.56	(0.42)
Jun-20	68.31	(0.42)
Jul-20	68.02	(0.42)
1YR Strip	73.47	(0.31)
2018	74.63	(0.22)
5YR Strip	67.22	(0.46)

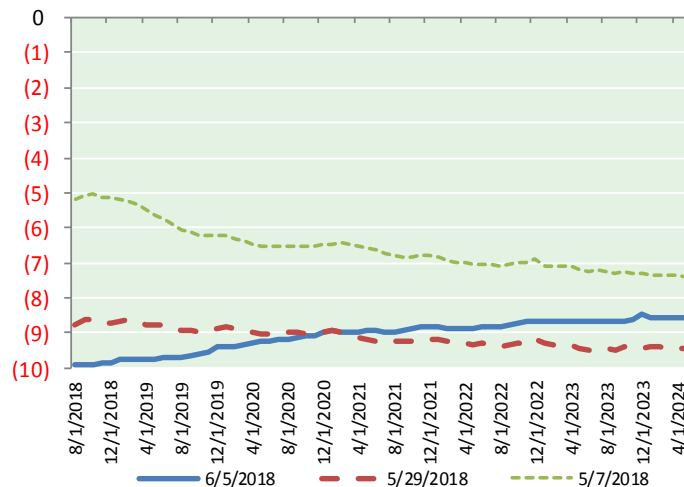
## BRENT CRUDE FORWARD CURVE



## WTI CRUDE FORWARD CURVE



## WTI-BRENT SPREAD



## FRAC Spread

### Specifications

Ethane :	42%	66,500 btu/g
Propane:	28%	90,830 btu/g
Butane:	11%	102,916 btu/g
Iso-Butane:	6%	98,935 btu/g
Natural Gasoline:	13%	115,021 btu/g

## Prompt NGL Futures

(\$/gallon)

	Jul-18	Close	Change
Butane	1.020	0.007	
Iso-Butane	1.365	(0.049)	
Nat Gasoline	1.507	0.003	

## NYMEX WTI (CL) Futures

Month	Close	Change
Jul-18	64.73	(0.79)
Aug-18	64.70	(0.76)
Sep-18	64.52	(0.71)
Oct-18	64.27	(0.68)
Nov-18	64.13	(0.60)
Dec-18	63.95	(0.52)
Jan-19	63.76	(0.48)
Feb-19	63.47	(0.44)
Mar-19	63.18	(0.40)
Apr-19	62.89	(0.36)
May-19	62.59	(0.33)
Jun-19	62.30	(0.30)
Jul-19	62.00	(0.28)
Aug-19	61.70	(0.26)
Sep-19	61.43	(0.24)
Oct-19	61.20	(0.22)
Nov-19	60.96	(0.20)
Dec-19	60.73	(0.20)
Jan-20	60.44	(0.20)
Feb-20	60.18	(0.20)
Mar-20	59.96	(0.18)
Apr-20	59.74	(0.18)
May-20	59.54	(0.18)
Jun-20	59.32	(0.18)
1YR Strip	63.71	(0.53)
2018	64.38	(0.68)
5YR Strip	58.45	(0.29)