

NATURAL GAS



JUNE 27, 2017

Prior Day's NYMEX Jul-17 Contract (CT)



NYMEX NG Futures

Month	Close	Change
Jul-17	3.027	0.098
Aug-17	3.049	0.098
Sep-17	3.043	0.094
Oct-17	3.071	0.091
Nov-17	3.134	0.086
Dec-17	3.282	0.082
Jan-18	3.371	0.077
Feb-18	3.351	0.072
Mar-18	3.279	0.063
Apr-18	2.878	0.028
May-18	2.838	0.020
Jun-18	2.864	0.017
Jul-18	2.891	0.015
Aug-18	2.897	0.014
Sep-18	2.872	0.013
Oct-18	2.888	0.012
Nov-18	2.936	0.011
Dec-18	3.068	0.009
Jan-19	3.153	0.007
Feb-19	3.126	0.003
Mar-19	3.061	0.001
Apr-19	2.726	(0.004)
May-19	2.700	(0.006)
Jun-19	2.730	(0.007)
1YR Strip	3.099	0.069
2017	3.101	0.092
5YR Strip	2.925	0.007

IN THE NEWS

Lithuania signs first deal for U.S. LNG — Reuters reports: Lithuania's state-owned gas trader Lietuvos Dujų Tiekimas (LDT) said on Monday it had signed a deal to buy liquefied natural gas (LNG) directly from the United States for the first time and expects to receive a delivery in the second half of August. The deal is with a

- Lithuania signs first deal for U.S. LNG
- U.S. natural gas futures kick off the week with strong gains

unit of Cheniere Energy and is part Lithuania's efforts to diversify its gas suppliers and reduce its reliance on Russia's Gazprom. LDT, part of state-owned energy group Lietuvos Energija, signed a deal last year with Koch Supply & Trading for LNG supplies throughout 2017. The LNG terminal at the Klaipeda port broke Russia's Gazprom gas supply monopoly in the Baltic States when it came online in 2014 and now provides Lithuania with roughly half of its gas. Lithuania will store the LNG gas at its Incukalnis underground gas storage, LDT said. For more on this story visit [reuters.com](http://reut.rs/2tcuKUT) or click the following link <http://reut.rs/2tcuKUT>

U.S. natural gas futures kick off the week with strong gains — Investing.com reports: U.S. natural gas futures started the week with strong gains on Monday, extending their recovery from three-month lows as updated weather forecasting models pointed to increased summer demand in the weeks ahead. U.S. natural gas for August delivery was at \$2.997 per million British thermal units by 8:40AM ET (1240GMT), up 4.6 cents, or around 1.6%. It fell to its lowest since March 8 at \$2.875 on Thursday of last week. Market participants looked ahead to weekly storage data due on Thursday, which is expected to show a build in a range between 50 and 61 billion cubic feet in the week ended June 23. That compares with a gain of 61 billion cubic feet in the preceding week, an increase of 37 billion a year earlier and a five-year average rise of 72 billion cubic feet. For more on this story visit [investing.com](http://bit.ly/2sK8elz) or click <http://bit.ly/2sK8elz>

12 MONTH CANDLESTICK (WEEKLY)



Prompt Natural Gas (NG) Daily Sentiment

NEUTRAL



RESISTANCE
3.06 & 3.10
SUPPORT
2.98 & 2.94

Trading Summary

NATURAL GAS

Futures	Close	Change
NG	3.027	0.098
Volume	439,043	27,812
Open Int.	1,462,883	(8,557)

CRUDE AND GASOLINE

Futures	Close	Change
Crude	43.38	0.37
RBOB	1.4387	0.0046
Crude/NG	14.23	(0.35)

METALS

Futures	Close	Change
Gold	1,246.30	5.30

EQUITIES

Exchange	Close	Change
DOW	21,409.55	14.79
S&P 500	2,294.62	(143.68)

CURRENCY

Currency	Close	Change
EUR/USD	1.1232	(0.0017)
USD/CND	1.3210	(0.0038)

Contact Us



Mansfield Energy Corp
1025 Airport Pkwy
Gainesville, GA 30501

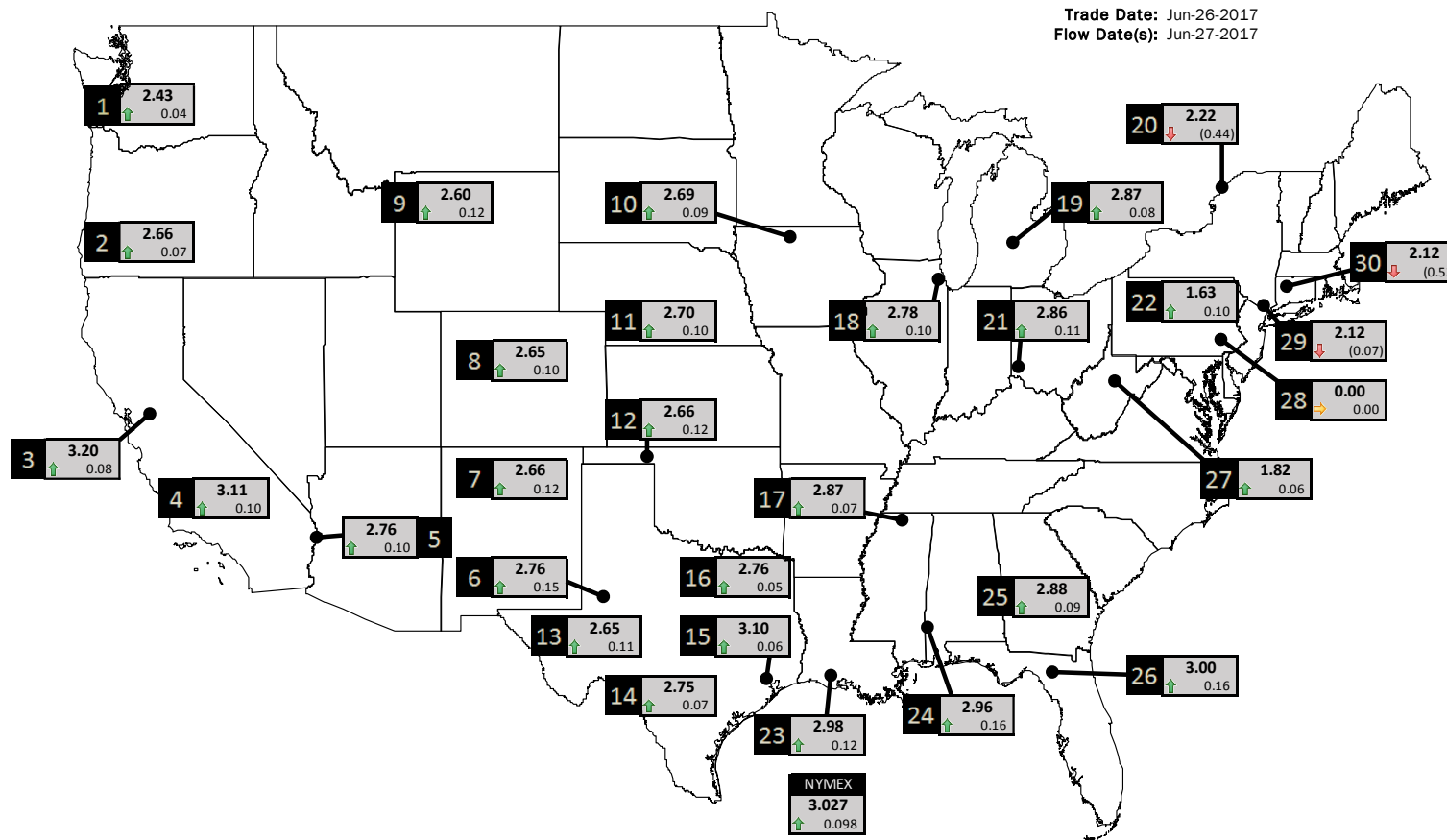
www.mansfield.energy
info@mansfieldoil.com

Phone: (800) 695-6626



NATURAL GAS NEWS

PHYSICAL SPOT NATURAL GAS PRICE MAP



ID	DAILY INDEX	PRICE	CHANGE
1	Stanfield	2.43	0.04
2	Malin	2.66	0.07
3	PG&E - Citygate	3.20	0.08
4	SoCal-Citygate	3.11	0.10
5	SoCal Border	2.76	0.10
6	Waha	2.76	0.15
7	EPSJ Blanco Pool	2.66	0.12
8	Opal Plant Tailgate	2.65	0.10
9	NWP-Wyoming	2.60	0.12
10	Ventura	2.69	0.09

ID	DAILY INDEX	PRICE	CHANGE
11	NGPL-Midcont Pool	2.70	0.10
12	Panhandle	2.66	0.12
13	EP-Permian	2.65	0.11
14	TGP-ZO	2.75	0.07
15	Houston Ship Channel	3.10	0.06
16	NGPL-TXOK	2.76	0.05
17	TETCO-M1.30	2.87	0.07
18	Chicago Citygates	2.78	0.10
19	Michcon	2.87	0.08
20	Iroquois (into)	2.22	(0.44)

ID	DAILY INDEX	PRICE	CHANGE
21	REX E-ANR	2.86	0.11
22	Leidy-Transco	1.63	0.10
23	Henry	2.98	0.12
24	Transco-85	2.96	0.16
25	Sonat-ZO South	2.88	0.09
26	FGT-Z3	3.00	0.16
27	Dominion-South	1.82	0.06
28	Transco-Z6 (non-NY)	0.00	0.00
29	Transco-Z6 (NY)	2.12	(0.07)
30	Iroquois-Z2	2.12	(0.53)

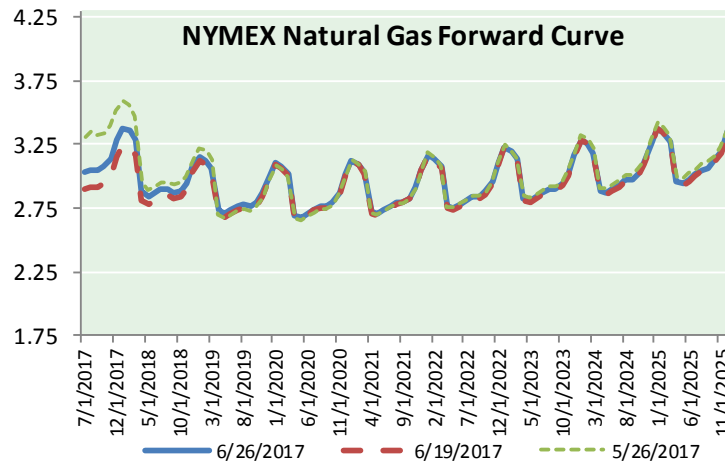
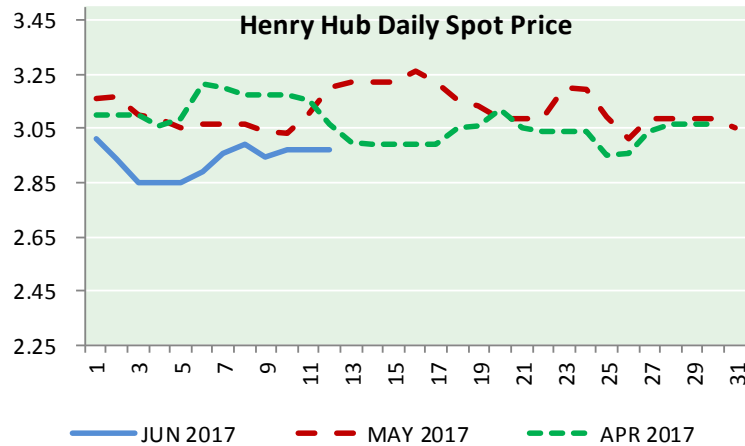
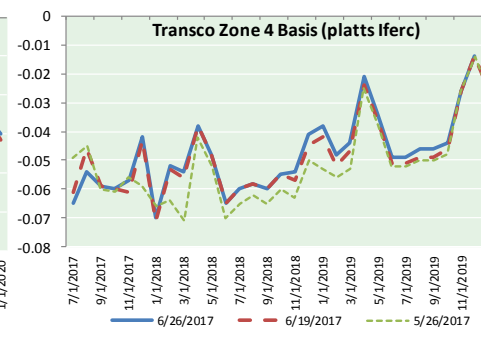
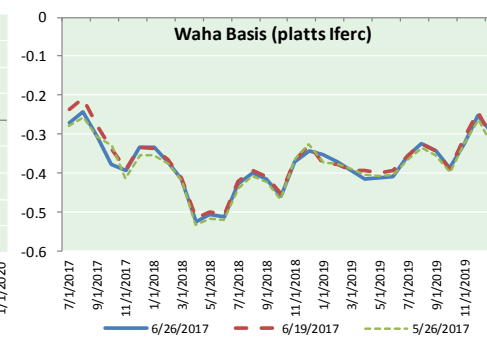
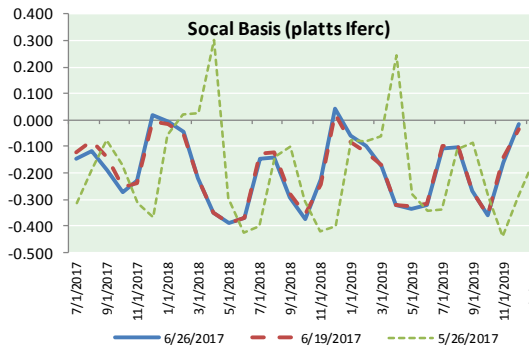
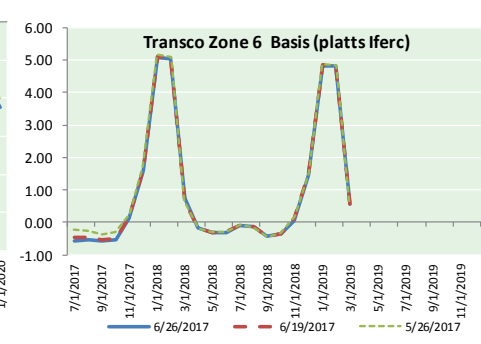
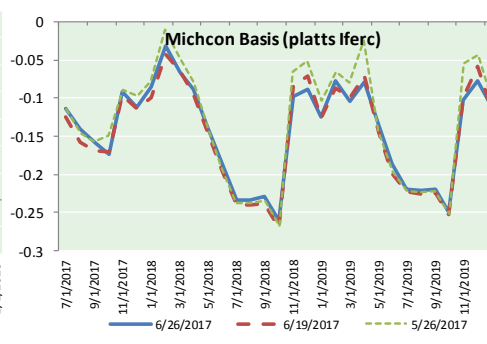
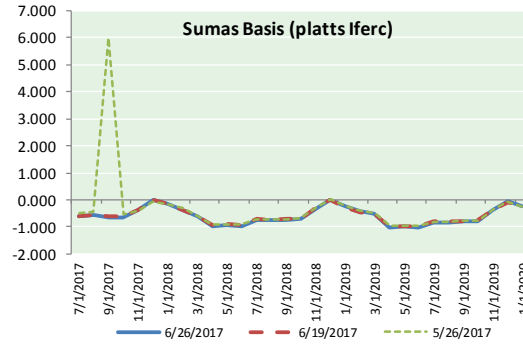
DISCLAIMER: The content herein is privileged and confidential. Content is presented for informational purposes and is a reflection of the market opinions of its authors subject to change without notice. Content is derived from sources believed to be accurate at the time of release but carries no guarantee of accuracy or completeness. Mansfield Energy Corp and its clients may or may not take positions similar or opposite those discussed herein. The reader should realize that the trading of commodities involves risk, and the reader assumes all responsibility for the risk of financial losses.





NATURAL GAS NEWS

NATURAL GAS BASIS FUTURES, HENRY HUB SPOT PRICES, AND FORWARD CURVE



CME NG Option Prices

ATM Call

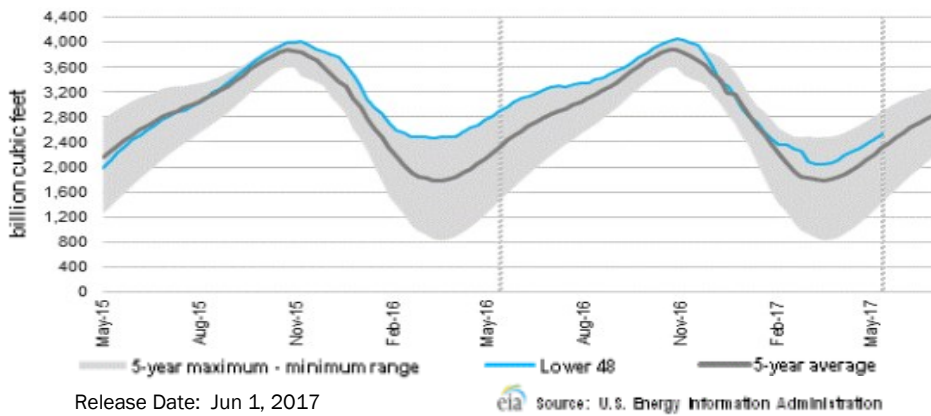
Month	Strike	Close	Imp Vol
Jul-17	3.050		
Aug-17	3.050	0.123	35.6
Sep-17	3.050	0.166	33.7
Oct-17	3.050	0.217	33.7
Nov-17	3.100	0.259	33.7
Dec-17			
Jan-18			
Feb-18			
Mar-18			
Apr-18			
May-18			
Jun-18			
Jul-18			
Aug-18			
Sep-18			
Oct-18			
Nov-18			

CME NG Option Prices

ATM Put

Month	Strike	Close	Imp Vol
Jul-17	3.050		
Aug-17	3.050	0.124	35.6
Sep-17	3.050	0.174	33.7
Oct-17	3.050	0.198	33.7
Nov-17	3.100		
Dec-17			
Jan-18			
Feb-18			
Mar-18			
Apr-18			
May-18			
Jun-18			
Jul-18			
Aug-18			
Sep-18			
Oct-18			
Nov-18			

WEEKLY GAS IN UNDERGROUND STORAGE WITH 5-YR RANGE



Rig Count

Report Date: June 23, 2017

	Total	Change
US -	941	+8
CN -	170	+11

EIA Weekly NG Storage Actual and Surveys for June 16, 2017
Released June 22, 2017

PIRA — +54
ARM — +56
Reuters — +58

EIA ACTUAL — +106

Total Working Gas In Storage

2,770 BCF
+61 BCF (LAST WEEK)
(324) BCF (LAST YEAR)
+207 BCF (5-YR AVG)

U.S. Natural Gas Supply Gas Week 6/15 - 6/21

Average daily values (BCF/D):
Last Year (BCF/d)
Dry Production — +71.4
Total Supply — +77.9
Last Week (BCF/d)
Dry Production — +71.6
Total Supply — +77.2

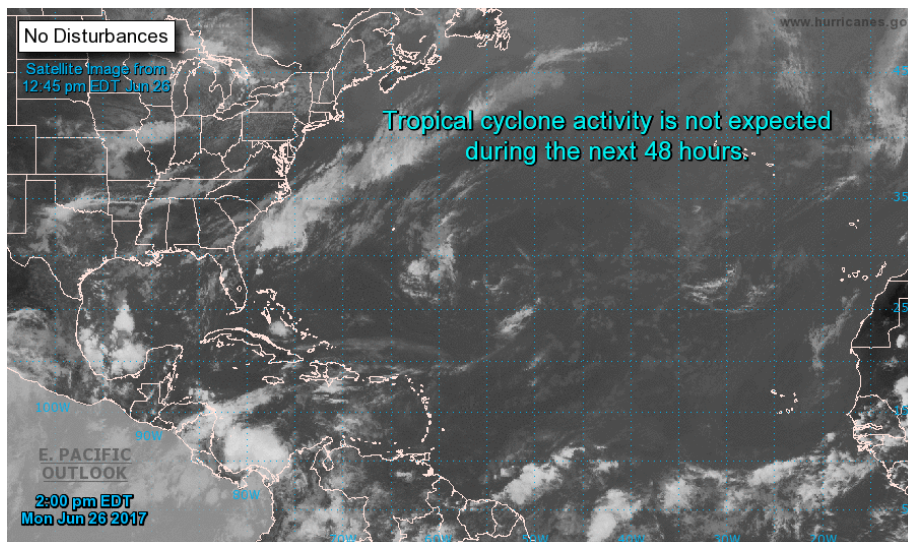
[NEXT REPORT ON JUN 29]

U.S. Natural Gas Demand Gas Week 6/15 - 6/21

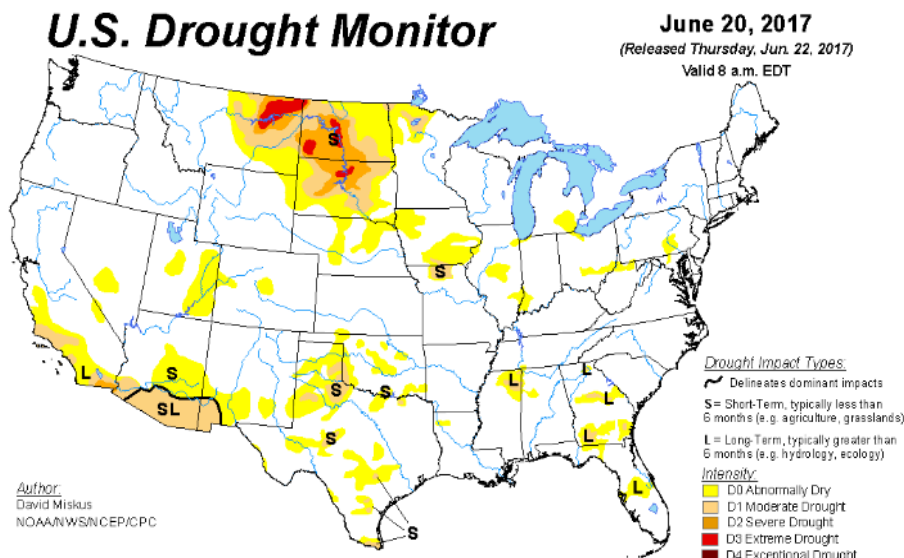
Average daily values (BCF/D):
Last Year (BCF/d)
Power — +34.2
Total Demand — +72.2
Last Week (BCF/d)
Power — +29.4
Total Demand — +68.3

[NEXT REPORT ON JUN 29]

TROPICAL STORM ACTIVITY— ATLANTIC

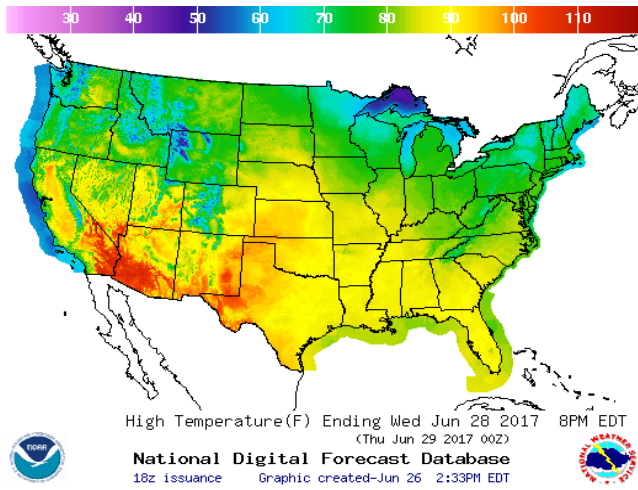


US DROUGHT MONITOR

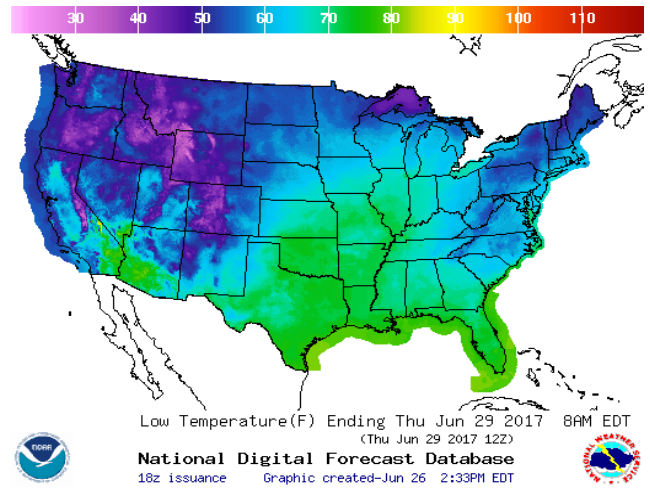


WEATHER – HIGH / LOW TEMPERATURE TOMORROW

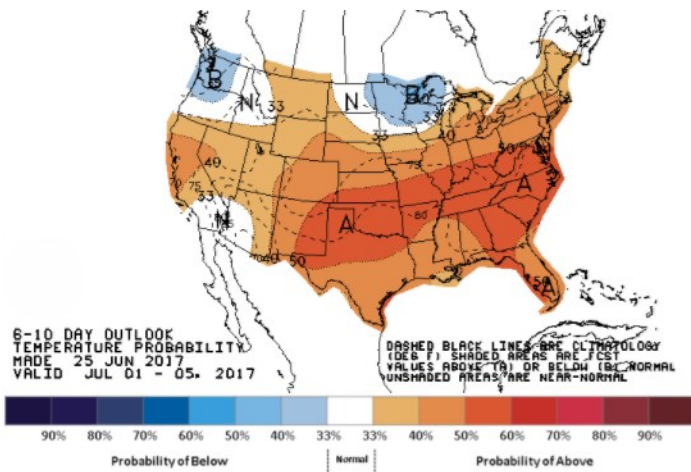
HIGH Temperature



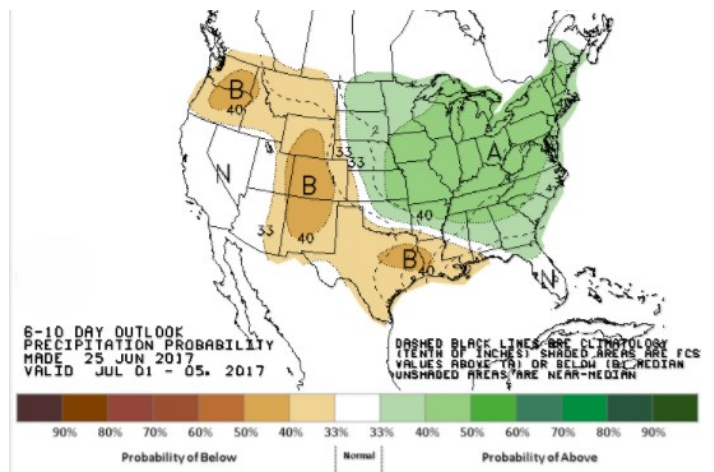
LOW Temperature



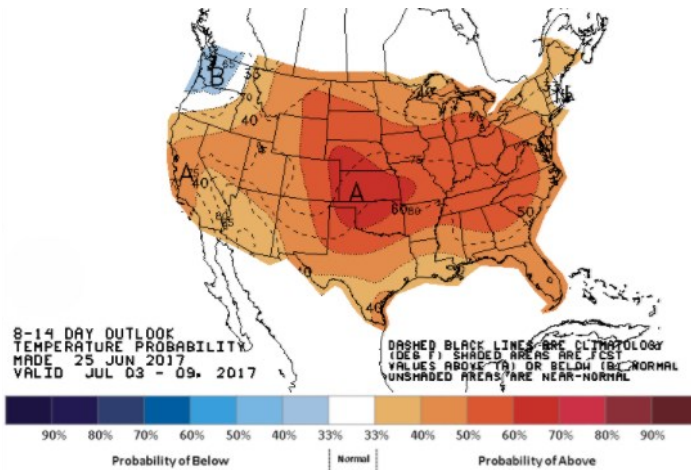
WEATHER – 6 TO 10 DAY OUTLOOK – NOAA
Temperature



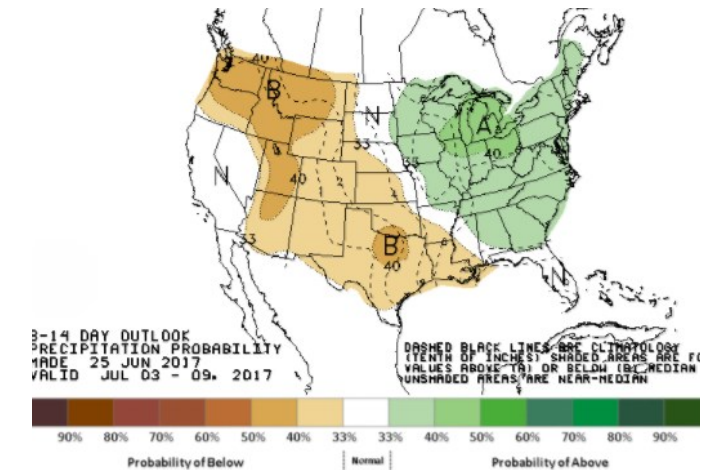
Precipitation



WEATHER – 8 TO 14 DAY OUTLOOK – NOAA
Temperature

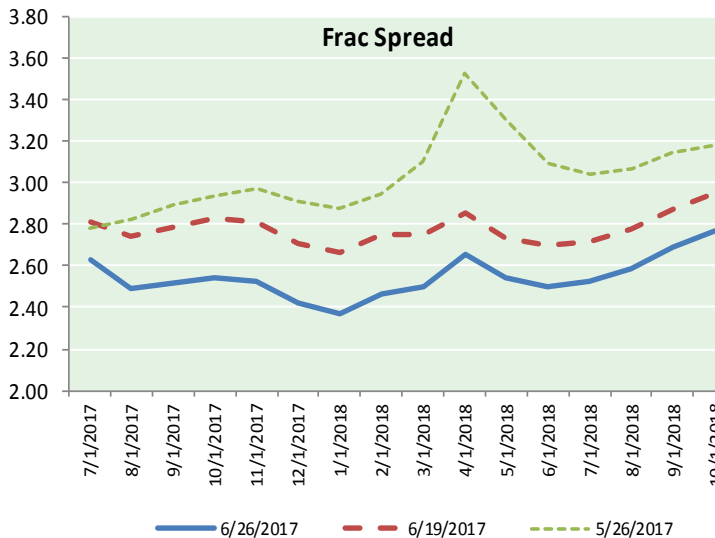
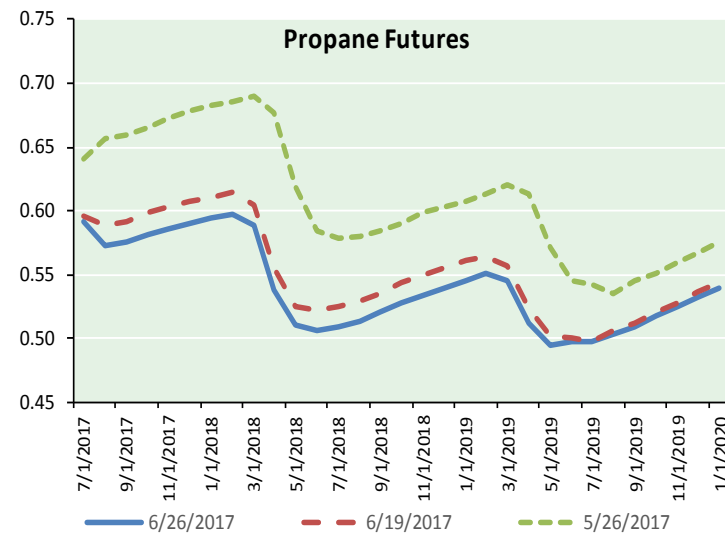
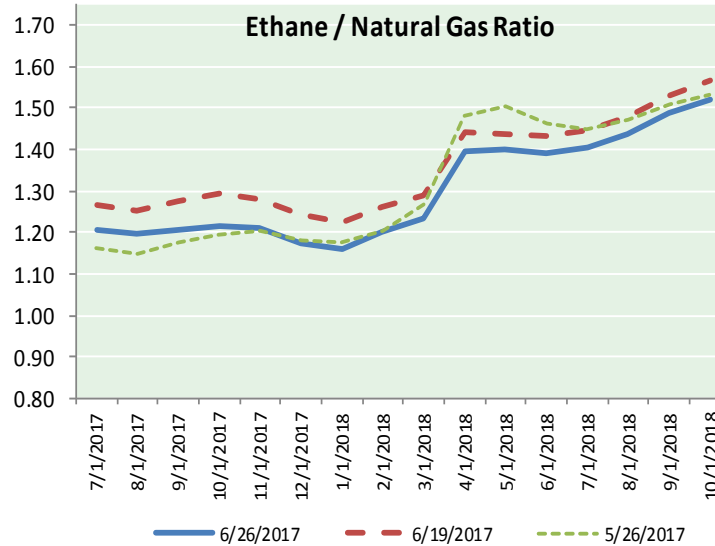
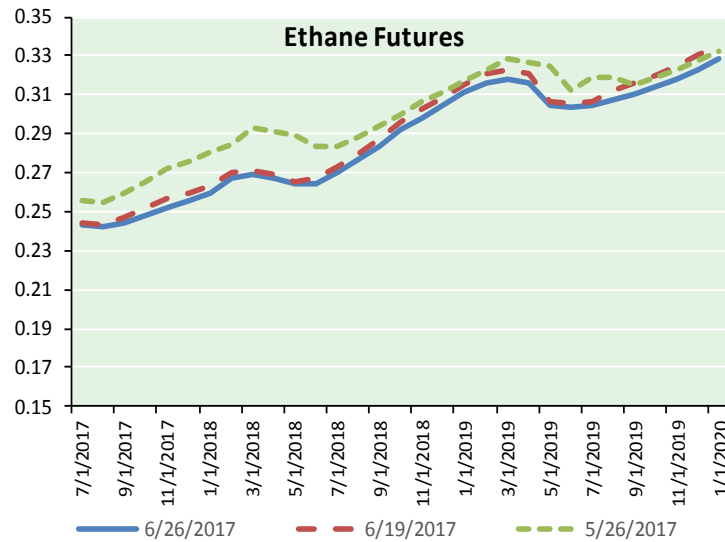


Precipitation





ETHANE FUTURES, NG/ETHANE RATIO, PROPANE FUTURES, AND THE FRAC SPREAD



CME Future Prices

Ethane (C2)

Non-LDH— Mont Belvieu

Month	Close	Change
Jul-17	0.243	0.002
Aug-17	0.243	0.006
Sep-17	0.244	0.006
Oct-17	0.248	0.006
Nov-17	0.252	0.005
Dec-17	0.256	0.005
Jan-18	0.260	0.005
Feb-18	0.268	0.006
Mar-18	0.269	0.006
Apr-18	0.268	0.004
May-18	0.265	0.005
Jun-18	0.265	0.005

1YR Strip 0.257 0.005

CME Future Prices

Propane (C3)

Non-LDH— Mont Belvieu

Month	Close	Change
Jul-17	0.591	0.000
Aug-17	0.573	0.001
Sep-17	0.576	0.002
Oct-17	0.581	0.002
Nov-17	0.586	0.002
Dec-17	0.590	0.001
Jan-18	0.594	0.001
Feb-18	0.598	0.001
Mar-18	0.589	0.002
Apr-18	0.539	0.002
May-18	0.510	0.001
Jun-18	0.506	0.001

1YR Strip 0.569 0.001

NATURAL GAS NEWS



Prompt WTI (CL) Crude Daily Sentiment

BEARISH



RESISTANCE
43.81 & 44.24
SUPPORT
42.79 & 42.20

FOLLOW US ON TWITTER:



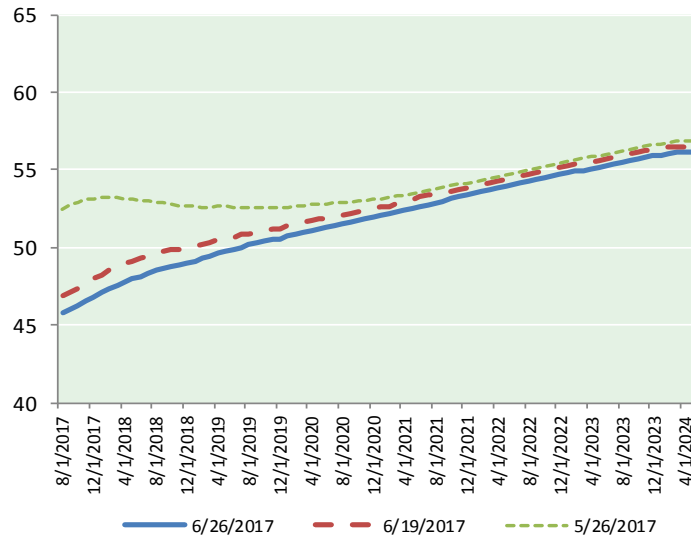
@MPG_NatGasNews

NYMEX Brent (BZ)

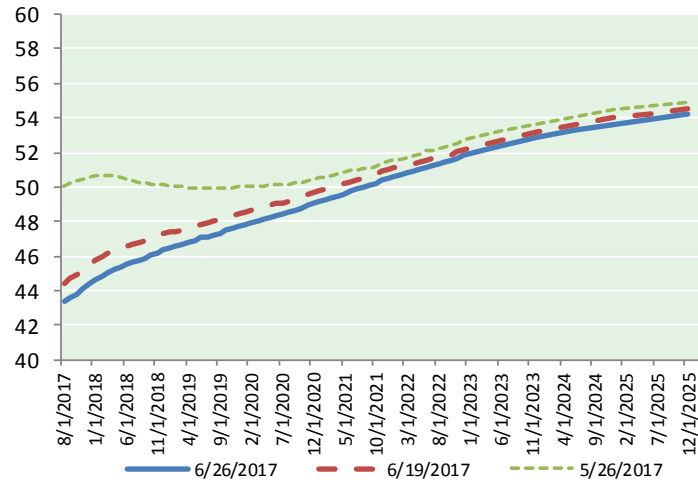
Futures

Month	Close	Change
Aug-17	45.83	0.29
Sep-17	46.04	0.29
Oct-17	46.28	0.30
Nov-17	46.55	0.29
Dec-17	46.81	0.28
Jan-18	47.08	0.28
Feb-18	47.32	0.28
Mar-18	47.55	0.29
Apr-18	47.77	0.29
May-18	47.97	0.29
Jun-18	48.16	0.29
Jul-18	48.36	0.29
Aug-18	48.54	0.29
Sep-18	48.67	0.28
Oct-18	48.79	0.27
Nov-18	48.90	0.26
Dec-18	49.02	0.27
Jan-19	49.15	0.26
Feb-19	49.29	0.25
Mar-19	49.46	0.25
Apr-19	49.64	0.24
May-19	49.78	0.23
Jun-19	49.88	0.22
Jul-19	50.03	0.21
1YR Strip 2017	47.14	0.29
5YR Strip	50.64	0.16

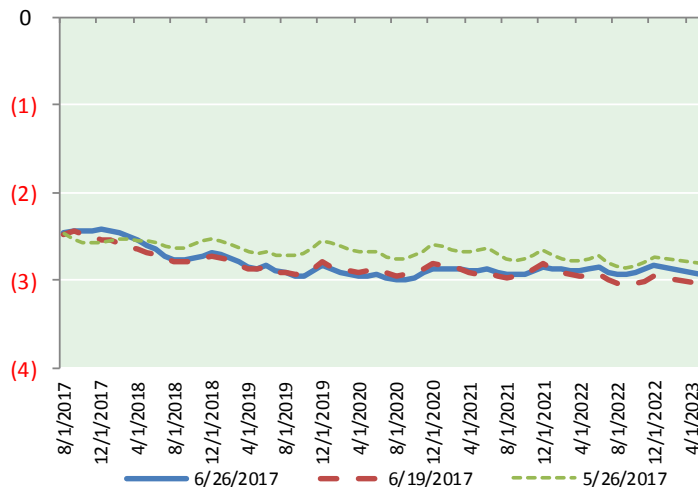
BRENT CRUDE FORWARD CURVE



WTI CRUDE FORWARD CURVE



WTI-BRENT SPREAD



FRAC Spread

Specifications

Ethane	: 42%	66,500 btu/g
Propane	: 28%	90,830 btu/g
Butane	: 11%	102,916 btu/g
Iso-Butane	: 6%	98,935 btu/g
Natural Gasoline	: 13%	115,021 btu/g

Prompt NGL Futures

(\$/gallon)

	Jul-17	Close	Change
Butane		0.702	0.000
Iso-Butane		0.701	0.000
Nat Gasoline		0.994	0.000

NYMEX WTI (CL) Futures

Month	Close	Change
Aug-17	43.38	0.37
Sep-17	43.61	0.34
Oct-17	43.84	0.33
Nov-17	44.11	0.32
Dec-17	44.40	0.32
Jan-18	44.65	0.31
Feb-18	44.87	0.30
Mar-18	45.06	0.29
Apr-18	45.22	0.27
May-18	45.37	0.27
Jun-18	45.52	0.27
Jul-18	45.64	0.26
Aug-18	45.77	0.25
Sep-18	45.90	0.24
Oct-18	46.04	0.24
Nov-18	46.18	0.23
Dec-18	46.33	0.22
Jan-19	46.44	0.21
Feb-19	46.55	0.20
Mar-19	46.67	0.20
Apr-19	46.80	0.19
May-19	46.92	0.19
Jun-19	47.05	0.18
Jul-19	47.14	0.18
1YR Strip 2017	44.64	0.30
5YR Strip	47.84	0.14