

# NATURAL GAS



JUNE 22, 2018

## Prior Day's NYMEX Jul-18 Contract (CT)



## NYMEX NG Futures

Month	Close	Change
Jul-18	2.975	0.011
Aug-18	2.972	0.007
Sep-18	2.947	0.003
Oct-18	2.954	0.003
Nov-18	2.992	0.001
Dec-18	3.100	0.002
Jan-19	3.187	0.002
Feb-19	3.154	0.001
Mar-19	3.051	(0.001)
Apr-19	2.681	0.002
May-19	2.640	0.001
Jun-19	2.666	0.001
Jul-19	2.696	0.001
Aug-19	2.703	0.002
Sep-19	2.689	0.002
Oct-19	2.707	0.003
Nov-19	2.760	0.004
Dec-19	2.884	0.003
Jan-20	2.983	0.004
Feb-20	2.952	0.004
Mar-20	2.861	0.004
Apr-20	2.545	(0.001)
May-20	2.517	(0.001)
Jun-20	2.543	(0.001)
1YR Strip	2.943	0.003
2018	2.990	0.005
5YR Strip	2.728	0.002

## IN THE NEWS

**California Regulators Reject \$639M Natural Gas Pipeline**— US News reported: California regulators have rejected plans to build a 47-mile natural gas pipeline in San Diego County after a judge ruled the \$639 million project is unnecessary. The San Diego Union-Tribune says the California Public Utilities Commission rejected the plan on Thursday. San Diego Gas & Electric and South-

- **California Regulators Reject \$639M Natural Gas Pipeline**
- **Shale's US\$2b natural gas leak shows bigger climate hit**

ern California Edison wanted to build a 36-inch pipeline between the communities of Rainbow and Miramar. It would have largely replaced a 16-inch pipeline built nearly 70 years ago. The utilities argued that the new, larger pipeline would improve safety and reliability and add capacity. It also would have added an estimated 57 cents a month to customer bills. SDG&E says the ruling means that the utility will now have to conduct expensive safety testing on the existing pipeline rather than replacing it. For more on this story visit [usnews.com](https://bit.ly/2lrF3z6) or click <https://bit.ly/2lrF3z6>

**Shale's US\$2b natural gas leak shows bigger climate hit**— Business Times reported: The shale boom that flooded the US with cheap natural gas, displacing coal and nuclear power generation, isn't as green as you think. An estimated 2.3 per cent of the gas pumped from American fields is lost to leakage from well sites, processing plants and compressor stations, according to an Environmental Defense Fund report published in the journal Science on Thursday. That's higher than the Environmental Protection Agency's 1.4 per cent estimate. The result was based on ground measurements and aircraft observations in areas accounting for about 30 per cent of American gas production, according to the EDF. Those results were extrapolated on a national scale to calculate the leakage estimate. While carbon dioxide grabs most of the attention as the top contributor to climate change, methane that makes up the bulk of the natural gas stream is 80 times more potent over a 20-year period, according to the New York-based environmental advocacy group. For more on this story visit [business-times.com.sg](https://bit.ly/2K8ikTp) or click <https://bit.ly/2K8ikTp>

## 12 MONTH CANDLESTICK (WEEKLY)



## Prompt Natural Gas (NG) Daily Sentiment

**BULLISH**



RESISTANCE  
3.01 & 3.04  
SUPPORT  
2.94 & 2.91

## Trading Summary

### NATURAL GAS

Futures	Close	Change
NG	2.975	0.011
Volume	370,877	(334,131)
Open Int.	1,489,043	(14,160)

### CRUDE AND GASOLINE

Futures	Close	Change
Crude	65.54	(0.17)
RBOB	2.0123	(0.0112)
Crude/NG	22.05	(0.11)

### METALS

Futures	Close	Change
Gold	1,267.20	(0.20)

### EQUITIES

Exchange	Close	Change
DOW	24,461.70	(196.10)
S&P 500	-528.94	(17.56)

### CURRENCY

Currency	Close	Change
EUR/USD	1.1644	0.0040
USD/CND	1.2405	0.0034

## Contact Us



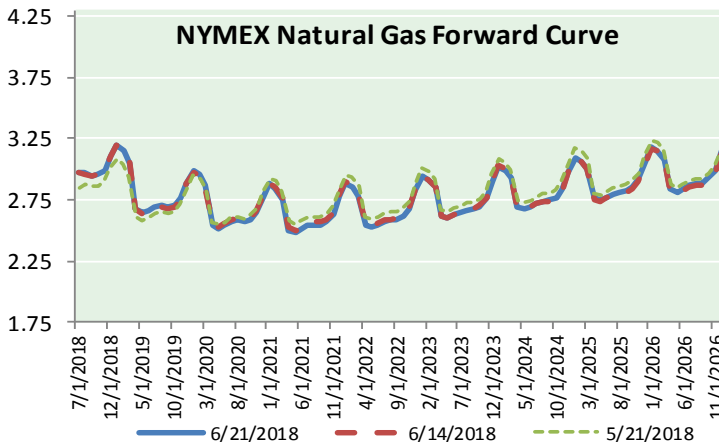
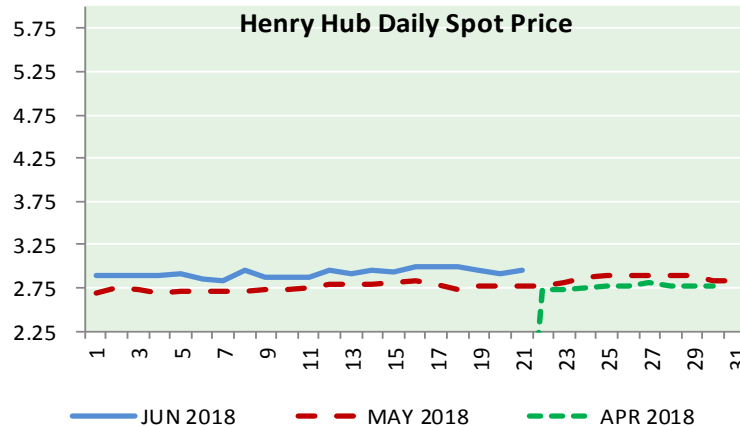
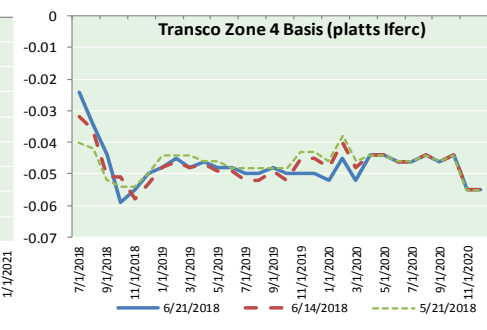
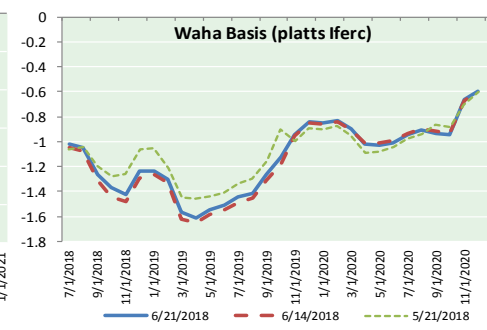
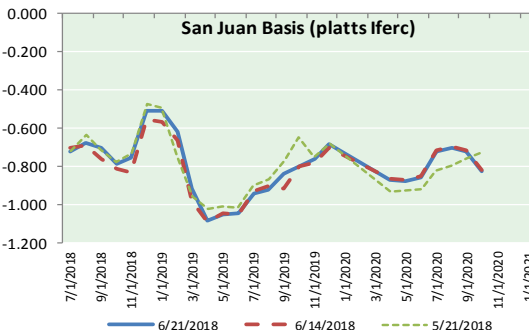
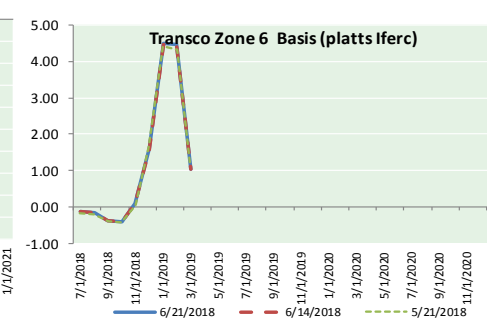
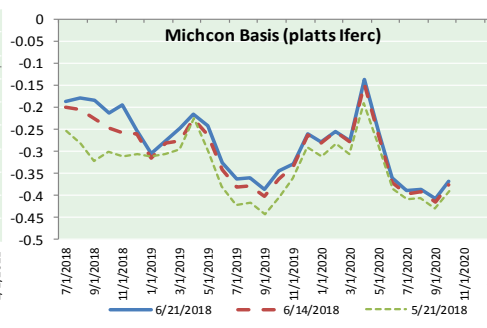
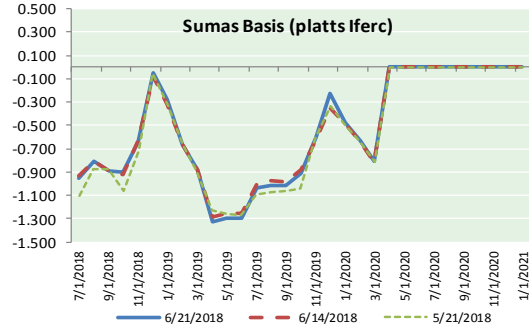
**Mansfield Energy Corp**  
1025 Airport Pkwy  
Gainesville, GA 30501  
[www.mansfield.energy](http://www.mansfield.energy)  
[info@mansfieldoil.com](mailto:info@mansfieldoil.com)

Phone: (800) 695-6626





NATURAL GAS BASIS FUTURES, HENRY HUB SPOT PRICES, AND FORWARD CURVE



NYMEX WTI Delivery

Month Average (\$/bbl)

(Excluding Weekends and Holidays)

Month: June 2018

Day	Price	Day	Price
1	65.81	16	
2		17	
3		18	65.85
4	64.75	19	65.07
5	65.52	20	66.22
6	64.73	21	65.54
7	65.95	22	
8	65.74	23	
9		24	
10		25	
11	66.10	26	
12	66.36	27	
13	66.64	28	
14	66.89	29	
15	65.06	30	

Average (Jun) 65.7487  
(through 06/21/2018)

Average (May) 69.9832

Average (Apr) 66.3252

CME NG Option Prices

ATM Call

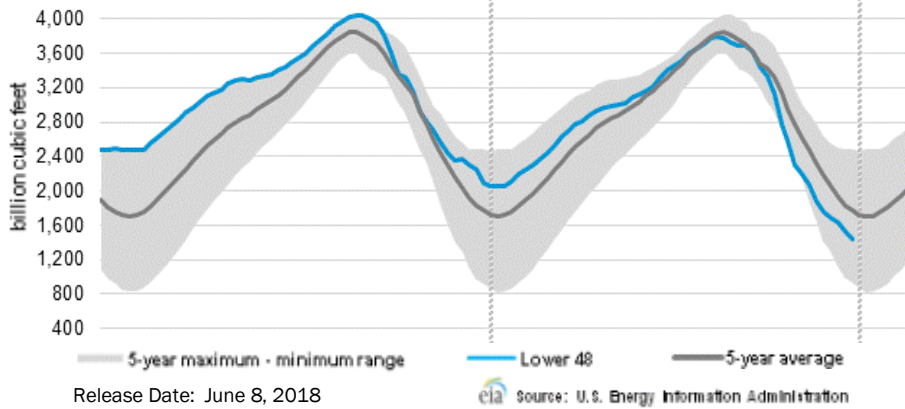
Month	Strike	Close	Imp Vol
Aug-18			
Sep-18	2.950	0.092	26.2
Oct-18			
Nov-18			
Dec-18			

CME NG Option Prices

ATM Put

Month	Strike	Close	Imp Vol
Aug-18			
Sep-18	2.950	0.071	18.7
Oct-18			
Nov-18			
Dec-18			

WEEKLY GAS IN UNDERGROUND STORAGE WITH 5-YR RANGE



Rig Count

Report Date: June 15, 2018

	Total	Change
US -	1059	(3)
CN -	139	+27

EIA Weekly NG Storage Actual and Surveys for June 15, 2018

Released June 14, 2018  
 Range (74) to (89)  
 PIRA – (86)  
 Citi Futures – (87)  
 Reuters – (91)

EIA ACTUAL – 96

Total Working Gas In Storage

2,004 BCF

91 BCF (LAST WEEK)  
 (757) BCF (LAST YEAR)  
 (499) BCF (5-YR AVG)

U.S. Natural Gas Supply Gas Week 6/14– 6/20

Average daily values (BCF/D):  
 Last Year (BCF/d)  
 Dry Production – +71.6  
 Total Supply – +77.6  
 Last Week (BCF/d)  
 Dry Production – +79.7  
 Total Supply – +85.3

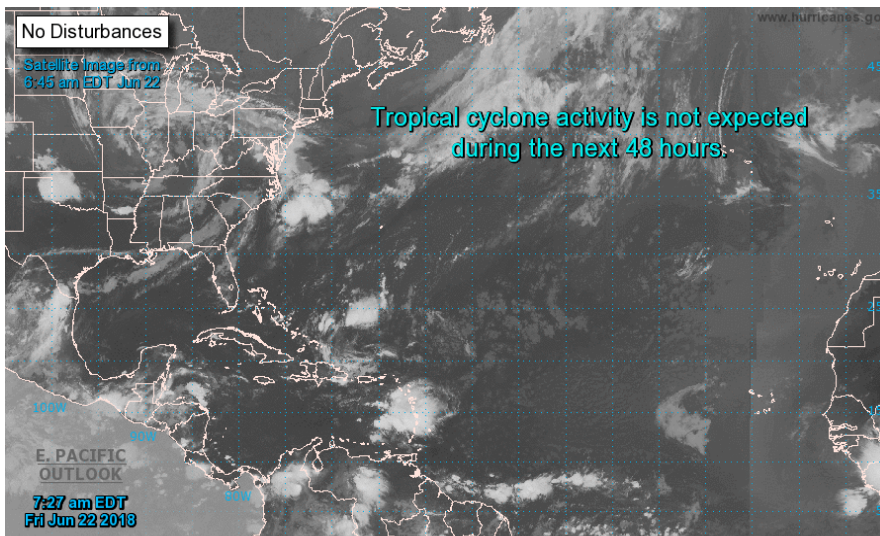
[NEXT REPORT ON Jun 29]

U.S. Natural Gas Demand Gas Week 6/14– 6/20

Average daily values (BCF/D):  
 Last Year (BCF/d)  
 Power – +31.2  
 Total Demand – +69.9  
 Last Week (BCF/d)  
 Power – +29.6  
 Total Demand – +71.0

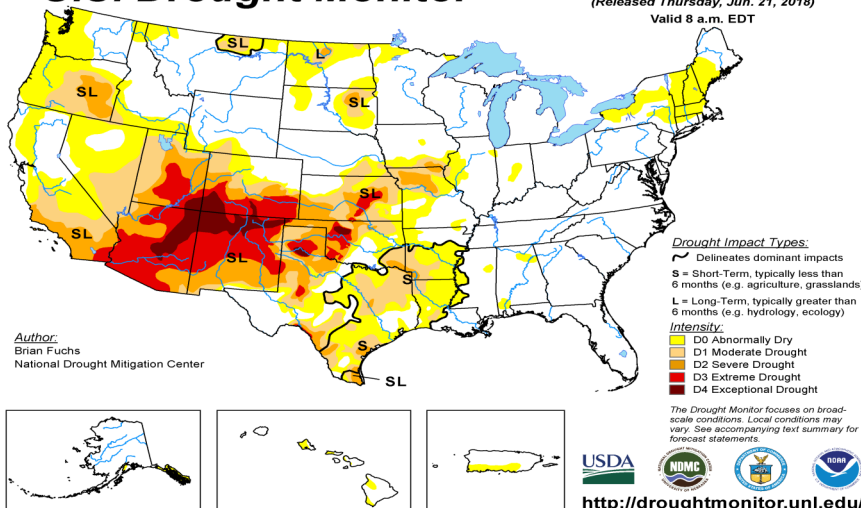
[NEXT REPORT ON Jun 29]

TROPICAL STORM ACTIVITY– ATLANTIC



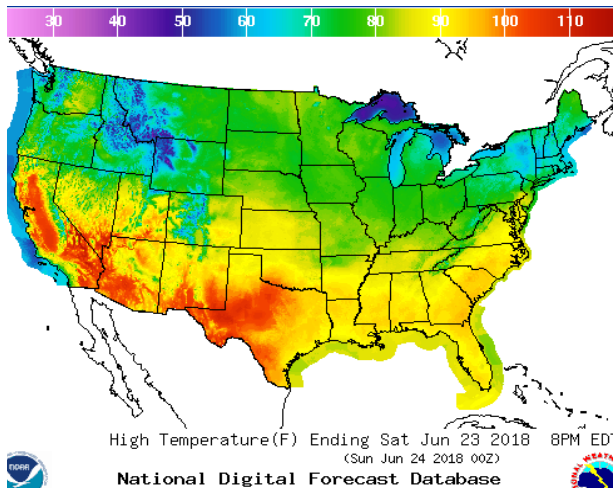
U.S. Drought Monitor

June 19, 2018  
 (Released Thursday, Jun. 21, 2018)  
 Valid 8 a.m. EDT

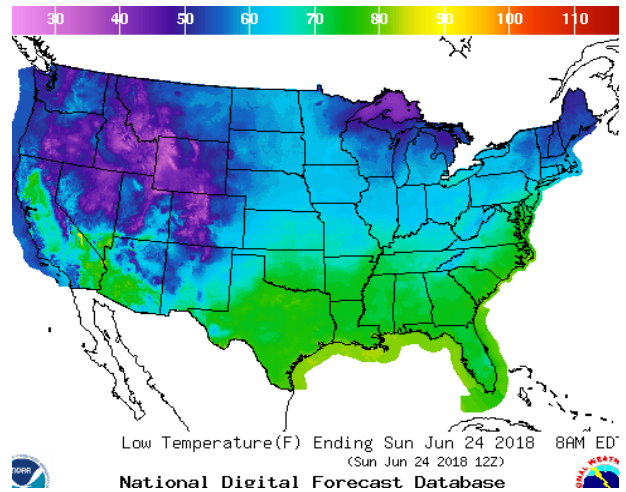


WEATHER – HIGH / LOW TEMPERATURE SATURDAY

HIGH Temperature

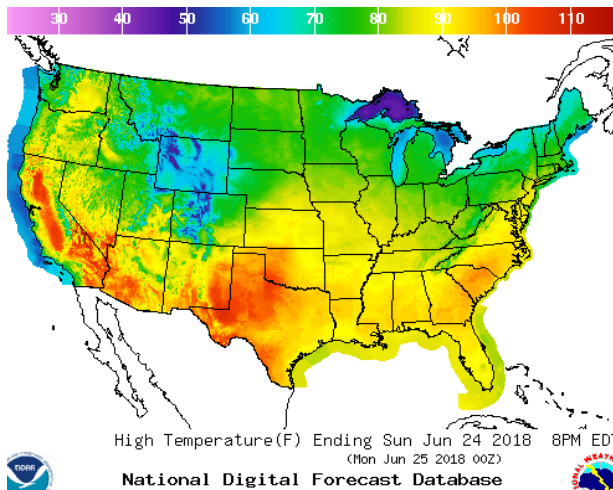


LOW Temperature

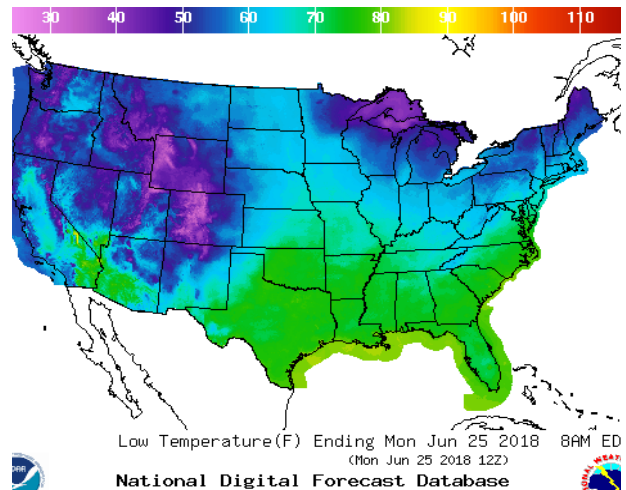


WEATHER – HIGH / LOW TEMPERATURE SUNDAY

HIGH Temperature

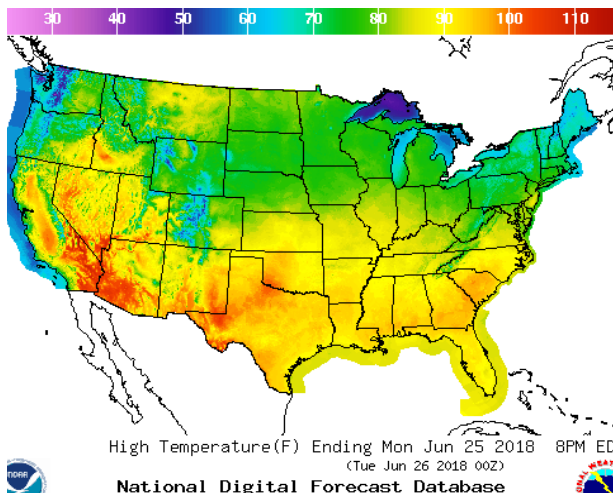


LOW Temperature

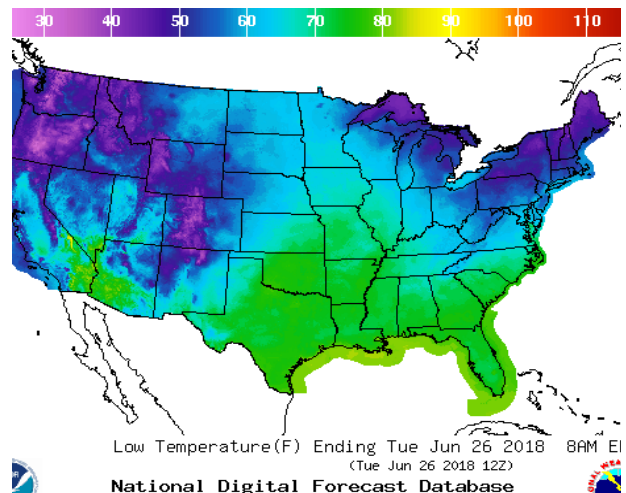


WEATHER – HIGH / LOW TEMPERATURE MONDAY

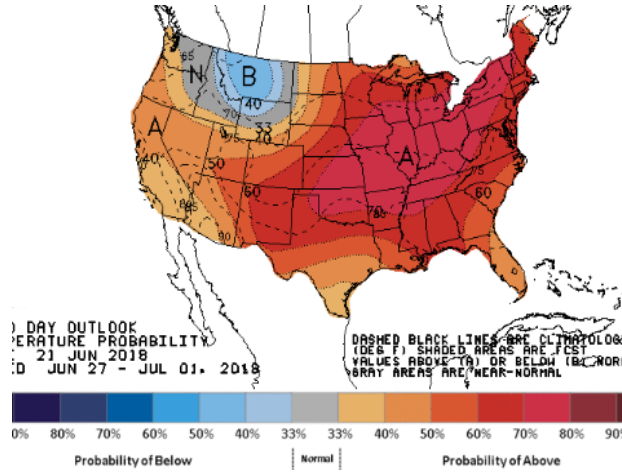
HIGH Temperature



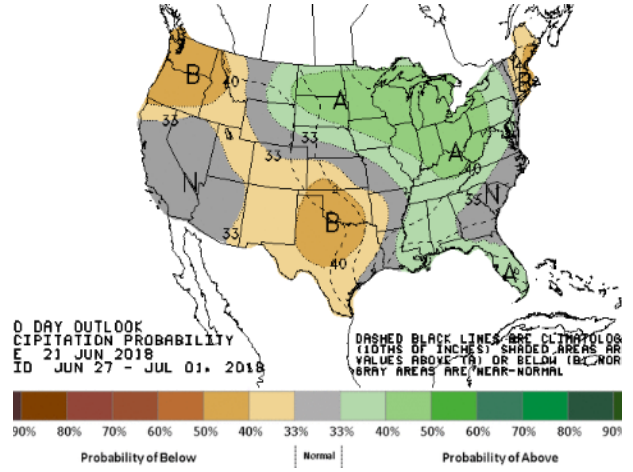
LOW Temperature



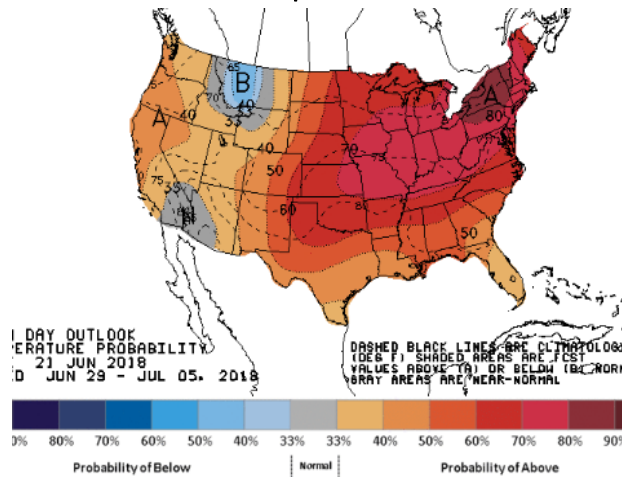
**WEATHER – 6 TO 10 DAY OUTLOOK – NOAA**  
**Temperature**



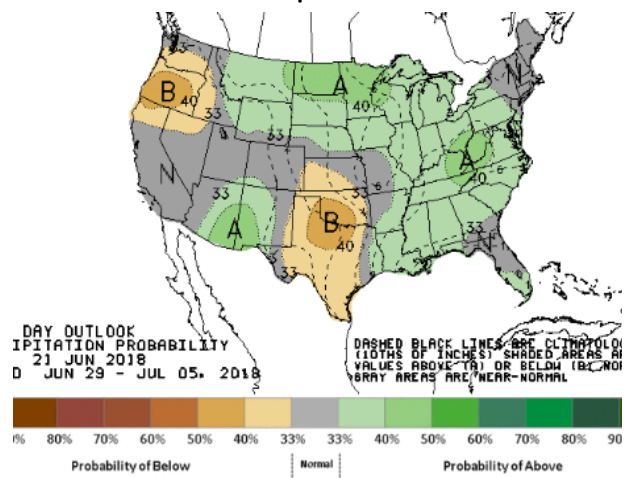
**Precipitation**



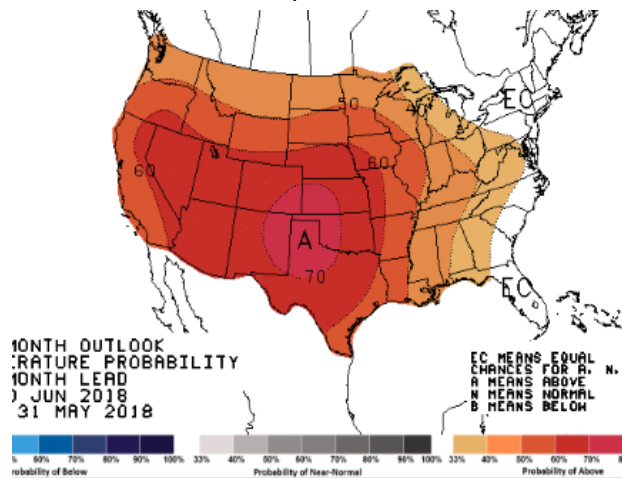
**WEATHER – 8 TO 14 DAY OUTLOOK – NOAA**  
**Temperature**



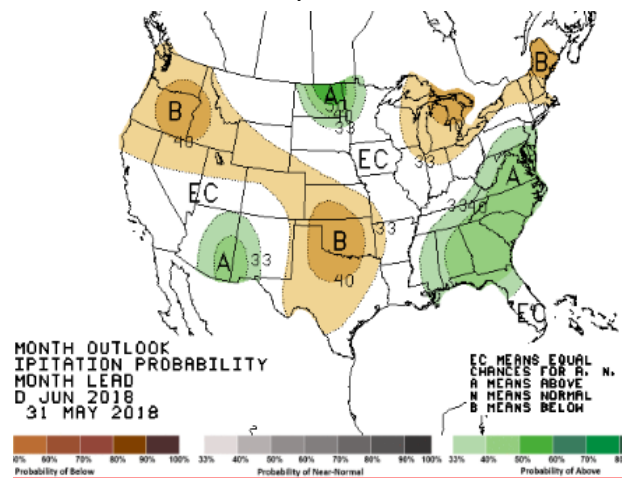
**Precipitation**



**WEATHER – 30 DAY OUTLOOK – NOAA**  
**Temperature**



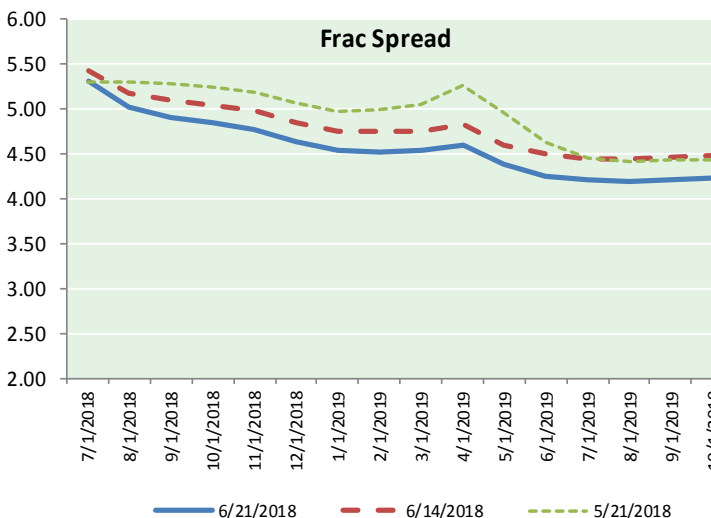
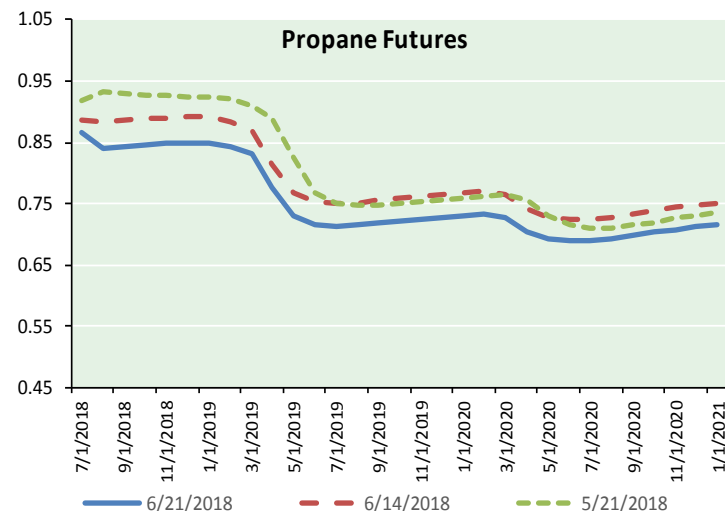
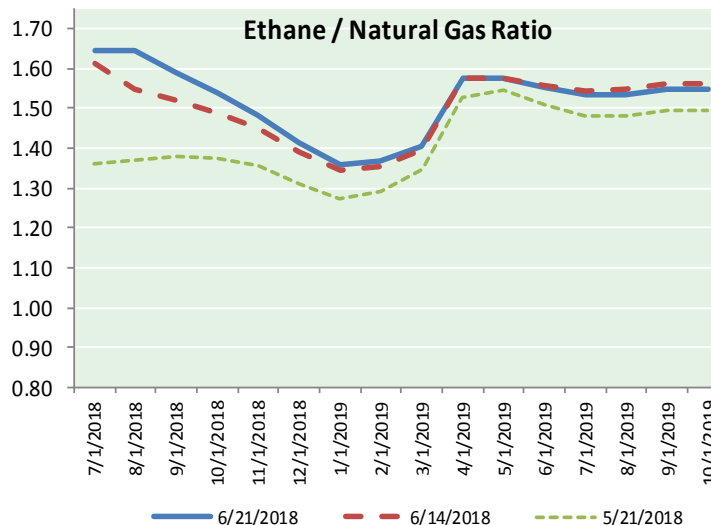
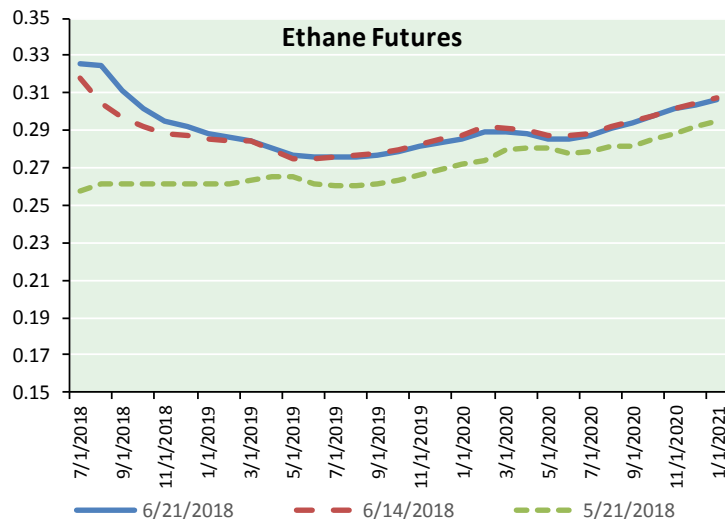
**Precipitation**



# NATURAL GAS NEWS



## ETHANE FUTURES, NG/ETHANE RATIO, PROPANE FUTURES, AND THE FRAC SPREAD



### CME Future Prices

#### Ethane (C2)

##### Non-LDH— Mont Belvieu

Month	Close	Change
Jul-18	0.326	(0.000)
Aug-18	0.325	0.003
Sep-18	0.311	0.000
Oct-18	0.302	0.000
Nov-18	0.295	0.000
Dec-18	0.292	0.000
Jan-19	0.288	0.000
Feb-19	0.287	0.000
Mar-19	0.285	0.000
Apr-19	0.281	(0.000)
May-19	0.277	(0.000)
Jun-19	0.275	0.000

1YR Strip 0.295 0.000

### CME Future Prices

#### Propane (C3)

##### Non-LDH— Mont Belvieu

Month	Close	Change
Jul-18	0.866	(0.004)
Aug-18	0.839	(0.013)
Sep-18	0.843	(0.012)
Oct-18	0.846	(0.011)
Nov-18	0.848	(0.011)
Dec-18	0.849	(0.011)
Jan-19	0.849	(0.011)
Feb-19	0.844	(0.011)
Mar-19	0.831	(0.011)
Apr-19	0.777	(0.012)
May-19	0.731	(0.013)
Jun-19	0.717	(0.013)

1YR Strip 0.820 (0.011)

**NATURAL GAS NEWS**



**Prompt WTI (CL) Crude  
Daily Sentiment**

**BULLISH**



RESISTANCE  
66.39 & 67.25  
SUPPORT  
64.51 & 63.49

FOLLOW US ON TWITTER:



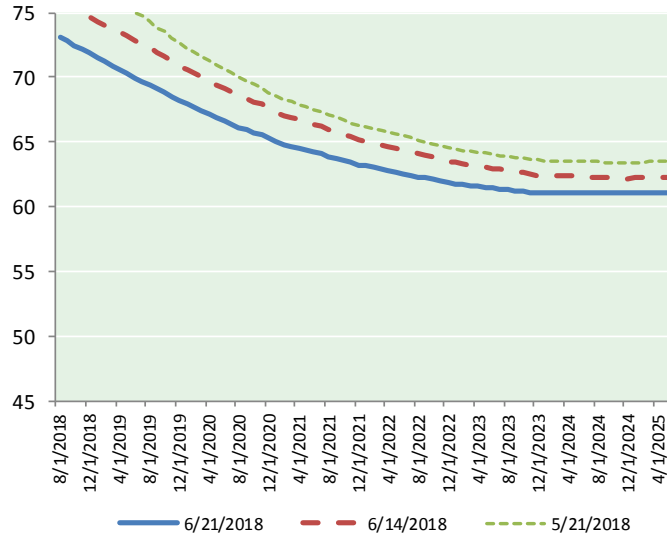
@MPG\_NatGasNews

**NYMEX Brent (BZ)**

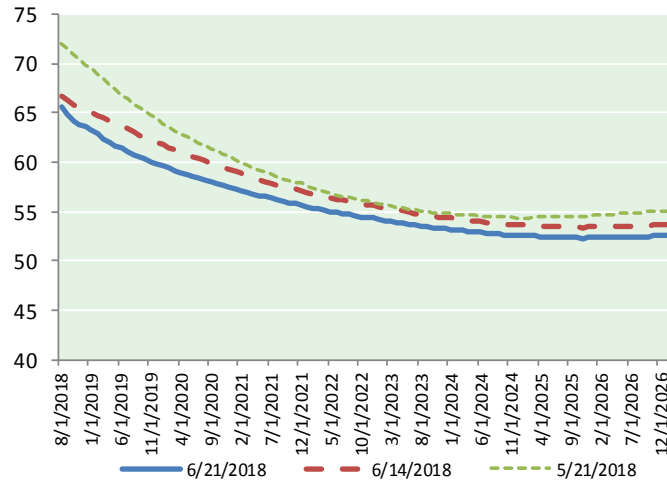
**Futures**

Month	Close	Change
Aug-18	73.05	(1.69)
Sep-18	72.80	(1.53)
Oct-18	72.42	(1.47)
Nov-18	72.15	(1.41)
Dec-18	71.86	(1.37)
Jan-19	71.56	(1.34)
Feb-19	71.23	(1.32)
Mar-19	70.91	(1.30)
Apr-19	70.60	(1.28)
May-19	70.28	(1.26)
Jun-19	69.96	(1.25)
Jul-19	69.69	(1.21)
Aug-19	69.42	(1.18)
Sep-19	69.10	(1.15)
Oct-19	68.81	(1.11)
Nov-19	68.52	(1.08)
Dec-19	68.18	(1.04)
Jan-20	67.88	(1.01)
Feb-20	67.63	(0.98)
Mar-20	67.37	(0.95)
Apr-20	67.12	(0.90)
May-20	66.88	(0.88)
Jun-20	66.65	(0.86)
Jul-20	66.39	(0.83)
1YR Strip	71.38	(1.37)
2018	72.46	(1.49)
5YR Strip	65.70	(0.79)

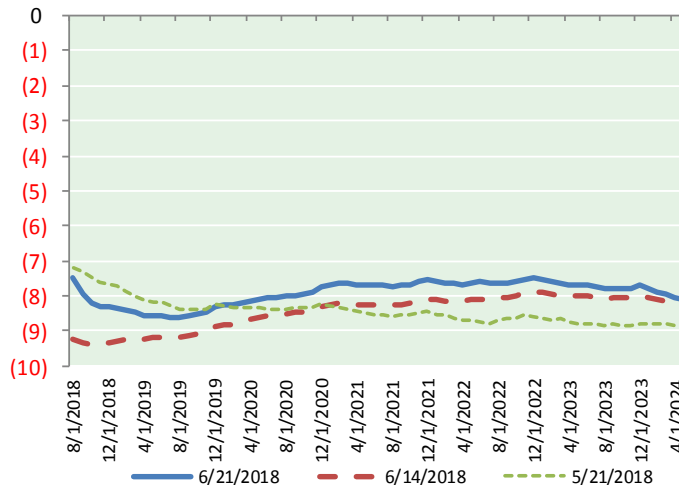
**BRENT CRUDE FORWARD CURVE**



**WTI CRUDE FORWARD CURVE**



**WTI-BRENT SPREAD**



**FRAC Spread**

**Specifications**

Ethane :	42%	66,500 btu/g
Propane:	28%	90,830 btu/g
Butane:	11%	102,916 btu/g
Iso-Butane:	6%	98,935 btu/g
Natural Gasoline:	13%	115,021 btu/g

**Prompt NGL Futures**

(\$/gallon)

	Jul-18	Close	Change
Butane	1.016	(0.004)	
Iso-Butane	1.341	(0.006)	
Nat Gasoline	1.471	(0.007)	

**NYMEX WTI (CL) Futures**

Month	Close	Change
Aug-18	65.54	(0.17)
Sep-18	64.86	(0.38)
Oct-18	64.19	(0.53)
Nov-18	63.84	(0.61)
Dec-18	63.55	(0.64)
Jan-19	63.22	(0.70)
Feb-19	62.82	(0.75)
Mar-19	62.42	(0.80)
Apr-19	62.05	(0.82)
May-19	61.71	(0.84)
Jun-19	61.40	(0.83)
Jul-19	61.08	(0.83)
Aug-19	60.78	(0.82)
Sep-19	60.51	(0.81)
Oct-19	60.29	(0.77)
Nov-19	60.07	(0.74)
Dec-19	59.89	(0.70)
Jan-20	59.63	(0.67)
Feb-20	59.39	(0.64)
Mar-20	59.17	(0.63)
Apr-20	58.96	(0.62)
May-20	58.77	(0.61)
Jun-20	58.58	(0.59)
Jul-20	58.35	(0.57)
1YR Strip	63.06	(0.66)
2018	64.40	(0.47)
5YR Strip	57.76	(0.44)