

# NATURAL GAS



JUNE 21, 2018

**Prior Day's NYMEX  
Jul-18 Contract (CT)**



**NYMEX NG Futures**

Month	Close	Change
Jul-18	2.964	0.064
Aug-18	2.965	0.061
Sep-18	2.944	0.060
Oct-18	2.951	0.056
Nov-18	2.991	0.055
Dec-18	3.098	0.054
Jan-19	3.185	0.054
Feb-19	3.153	0.052
Mar-19	3.052	0.051
Apr-19	2.679	0.040
May-19	2.639	0.038
Jun-19	2.665	0.038
Jul-19	2.695	0.038
Aug-19	2.701	0.037
Sep-19	2.687	0.037
Oct-19	2.704	0.037
Nov-19	2.756	0.034
Dec-19	2.881	0.032
Jan-20	2.979	0.029
Feb-20	2.948	0.027
Mar-20	2.857	0.027
Apr-20	2.546	0.008
May-20	2.518	0.007
Jun-20	2.544	0.007
1YR Strip	2.941	0.052
2018	2.986	0.058
5YR Strip	2.727	0.012

**IN THE NEWS**

US, Canada require nearly \$800 billion investment to support oil, natural gas industries— Daily Energy Insider: From now until 2035, a yearly investment of \$44 billion — a total of around \$791 billion — will be required on average to keep natural gas, oil and natural gas liquid (NGL) infrastructure going in the United States and Canada, according to a new report released by the Interstate

- **US, Canada require nearly \$800 billion investment to support oil, natural gas industries**
- **Stepping on the gas - China's home-built fracking boom**

Natural Gas Association of America Foundation. The study — North American Midstream Infrastructure through 2035: Significant Development Continues — is an update to a 2016 infrastructure report, now meant to cover the 18-year period from 2018 to 2035. Natural gas will dominate the needs of this period, the report says, as its energy infrastructure needs around \$417 billion for pipelines, compressors, laterals, gas-lease equipment, processing, gas storage and LNG export facilities. It's a rapidly growing market and one which needs significant capital to continue growing. For more on this story visit [dailyenergyinsider.com](https://dailyenergyinsider.com) or click <https://bit.ly/2MIsJaI>

Stepping on the gas - China's home-built fracking boom — Investing reported: On a flattened mountaintop a two-and-half-hour drive south of Chongqing in southwest China, a fleet of towering, red fracking trucks pumps chemicals and sand into a 1,500-metre horizontal well deep under the ground. The equipment was designed and built by China's state-owned energy major Sinopec, the result of a decades-long government drive to develop low-cost domestic technology to tap the country's vast shale gas resources buried in the region's mountainous terrain. It is the latest key technology that China has learned to master. Except for a handful of higher-end tools, Sinopec and a crop of independent companies make everything from trucks and pumps to drilling fluid and proppants - treated sand or man-made ceramics used to "prop" open a fracture to allow gas to escape. For more on this story visit [investing.com](https://investing.com) or click <https://bit.ly/2K9zHXI>

**12 MONTH CANDLESTICK (WEEKLY)**



**Prompt Natural Gas  
(NG) Daily Sentiment**

**BULLISH**



RESISTANCE  
2.99 & 3.01  
SUPPORT  
2.93 & 2.89

**Trading Summary**

**NATURAL GAS**

Futures	Close	Change
NG	2.964	0.064
Volume	393,246	(354,431)
Open Int.	1,503,604	(14,853)

**CRUDE AND GASOLINE**

Futures	Close	Change
Crude	66.22	1.15
RBOB	2.0235	(0.0144)
Crude/NG	22.34	(0.10)

**METALS**

Futures	Close	Change
Gold	1,271.20	(11.20)

**EQUITIES**

Exchange	Close	Change
DOW	24,657.80	(42.41)
S&P 500	-725.04	4.73

**CURRENCY**

Currency	Close	Change
EUR/USD	1.1567	(0.0005)
USD/CND	1.2405	0.0008

**Contact Us**

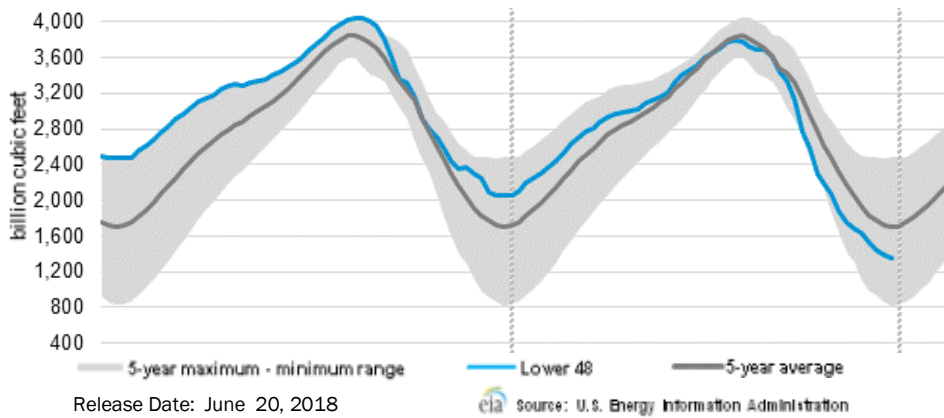


**Mansfield Energy Corp**  
1025 Airport Pkwy  
Gainesville, GA 30501  
[www.mansfield.energy](http://www.mansfield.energy)  
[info@mansfieldoil.com](mailto:info@mansfieldoil.com)

Phone: (800) 695-6626



WEEKLY GAS IN UNDERGROUND STORAGE WITH 5-YR RANGE



Rig Count

Report Date: June 15, 2018

	Total	Change
US -	1059	(3)
CN -	139	+27

EIA Weekly NG Storage Actual and Surveys for June 15, 2018

Released June 14, 2018  
 Range (74) to (89)  
 PIRA – (86)  
 Citi Futures – (87)  
 Reuters – (91)

EIA ACTUAL – 96

Total Working Gas In Storage

1,913 BCF

96 BCF (LAST WEEK)  
 (785) BCF (LAST YEAR)  
 (507) BCF (5-YR AVG)

U.S. Natural Gas Supply Gas Week 6/7– 6/13

Average daily values (BCF/D):  
 Last Year (BCF/d)  
 Dry Production – +72.3  
 Total Supply – +78.2  
 Last Week (BCF/d)  
 Dry Production – +79.6  
 Total Supply – +85.4

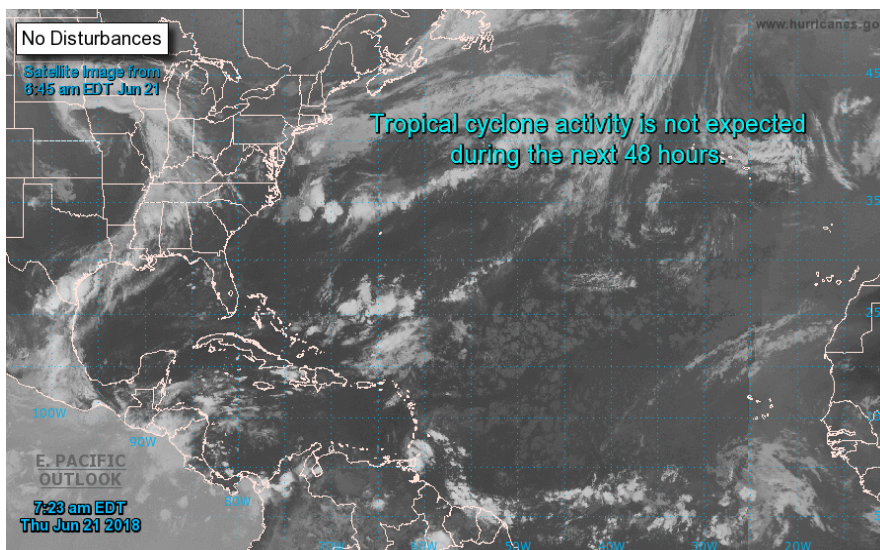
[NEXT REPORT ON Jun 22]

U.S. Natural Gas Demand Gas Week 6/7– 6/13

Average daily values (BCF/D):  
 Last Year (BCF/d)  
 Power – +28.0  
 Total Demand – +68.0  
 Last Week (BCF/d)  
 Power – +29.5  
 Total Demand – +71.3

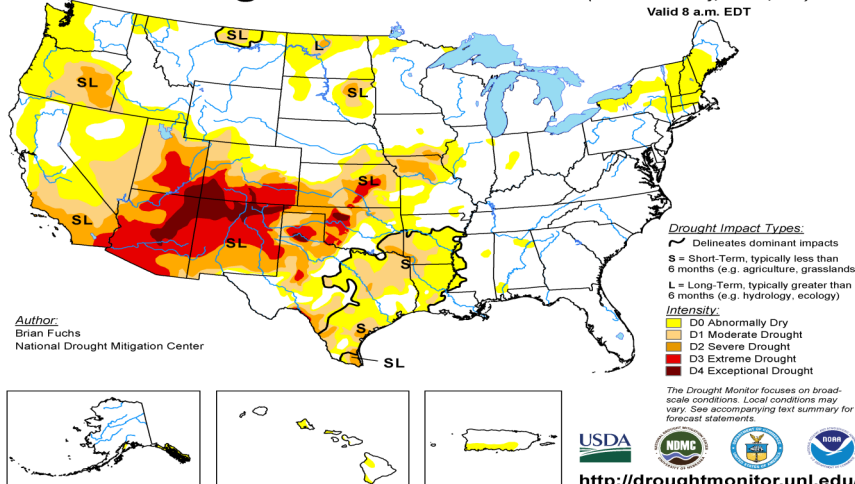
[NEXT REPORT ON Jun 22]

TROPICAL STORM ACTIVITY– ATLANTIC



U.S. Drought Monitor

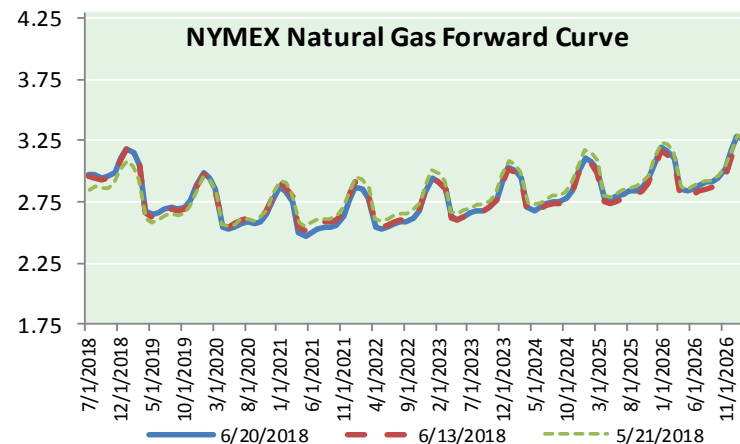
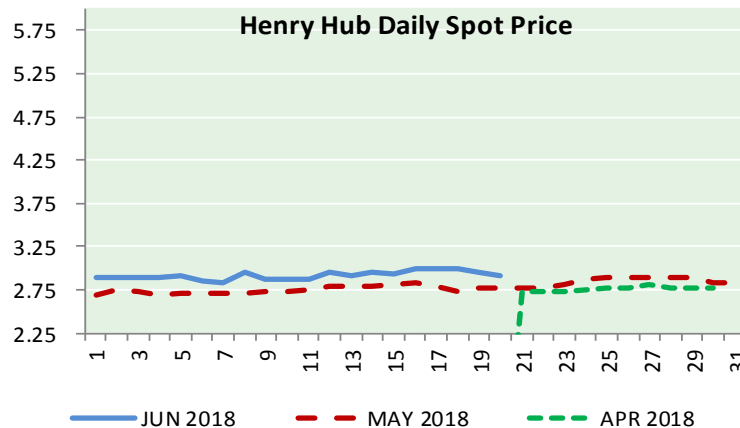
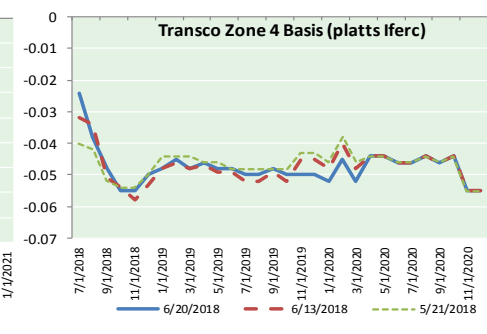
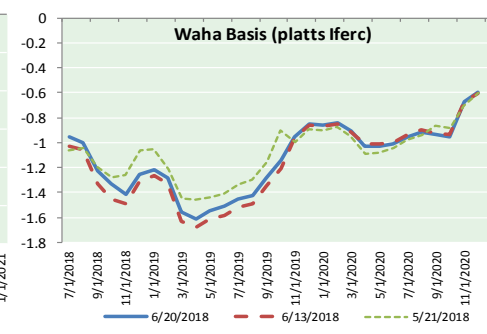
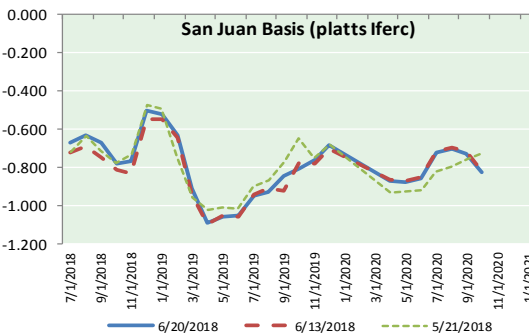
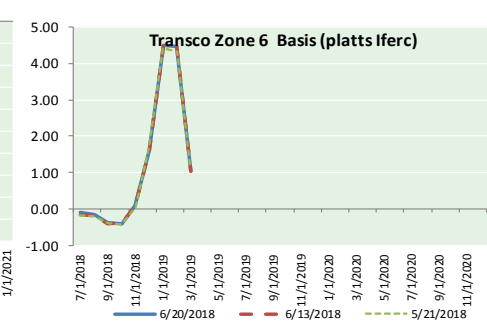
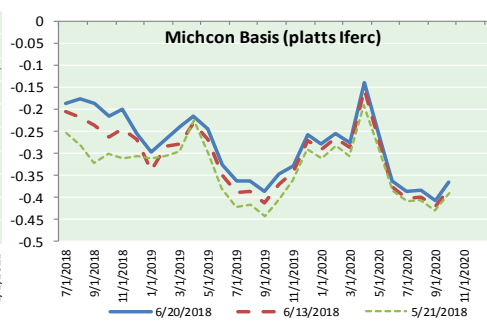
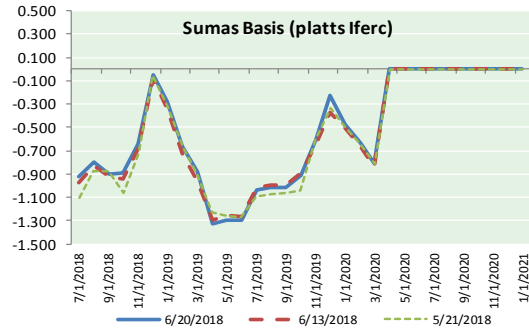
June 19, 2018  
 (Released Thursday, Jun. 21, 2018)  
 Valid 8 a.m. EDT





# NATURAL GAS NEWS

## NATURAL GAS BASIS FUTURES, HENRY HUB SPOT PRICES, AND FORWARD CURVE



### NYMEX WTI Delivery

#### Month Average (\$/bbl)

(Excluding Weekends and Holidays)

Month: June 2018

Day	Price	Day	Price
1	65.81	16	
2		17	
3		18	65.85
4	64.75	19	65.07
5	65.52	20	66.22
6	64.73	21	
7	65.95	22	
8	65.74	23	
9		24	
10		25	
11	66.10	26	
12	66.36	27	
13	66.64	28	
14	66.89	29	
15	65.06	30	

Average (Jun) 65.7636  
(through 06/20/2018)

Average (May) 69.9832

Average (Apr) 66.3252

### CME NG Option Prices

#### ATM Call

Month	Strike	Close	Imp Vol
Aug-18			
Sep-18	3.000	0.080	22.5
Oct-18			
Nov-18			
Dec-18			

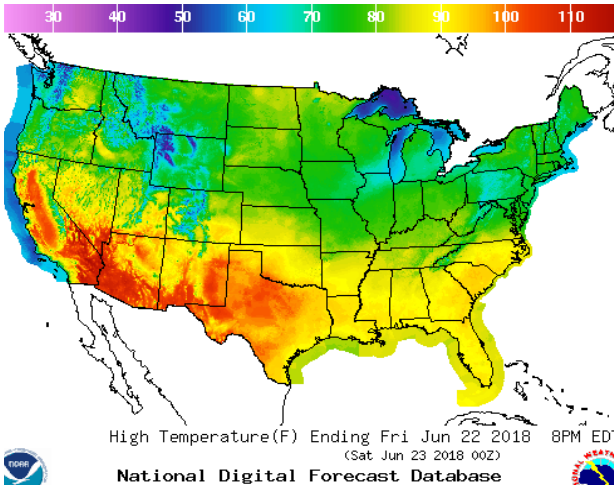
### CME NG Option Prices

#### ATM Put

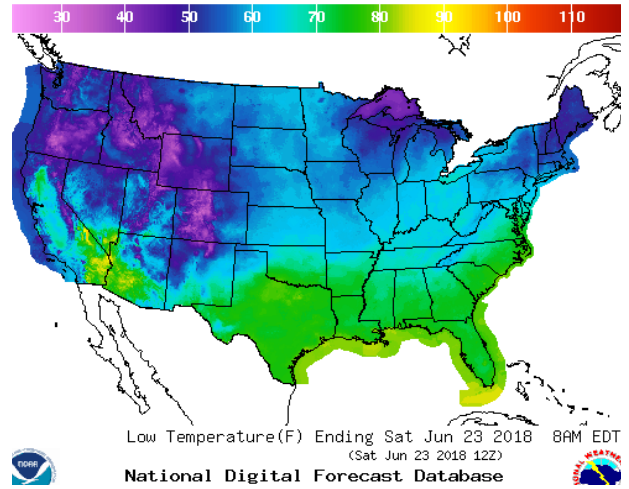
Month	Strike	Close	Imp Vol
Aug-18			
Sep-18	3.000	0.102	26.2
Oct-18			
Nov-18			
Dec-18			

WEATHER – HIGH / LOW TEMPERATURE TOMORROW

HIGH Temperature

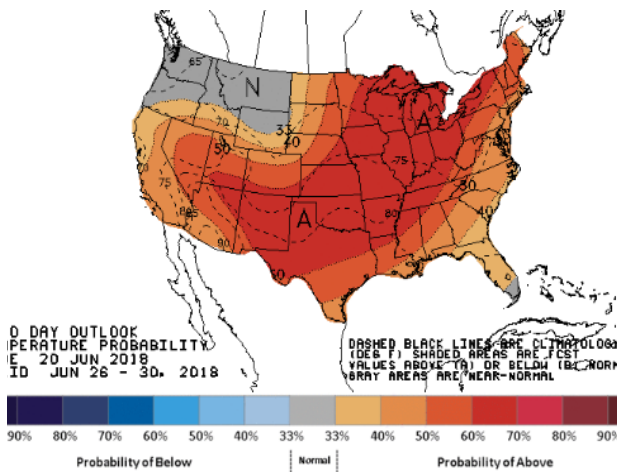


LOW Temperature

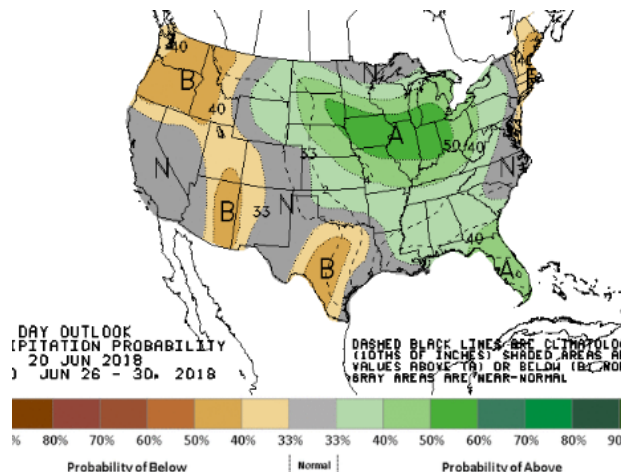


WEATHER – 6 TO 10 DAY OUTLOOK – NOAA

Temperature

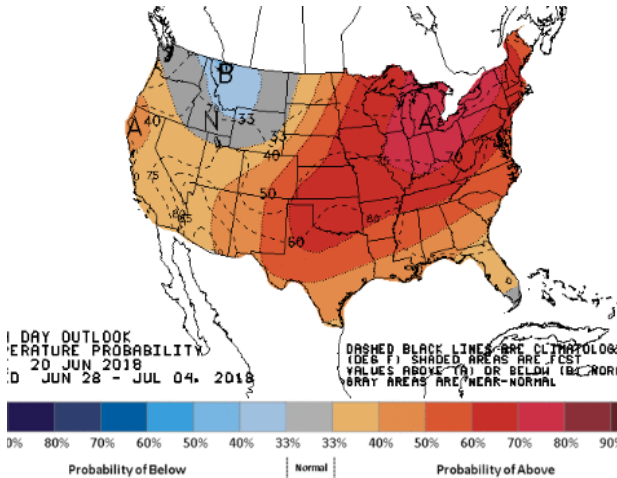


Precipitation

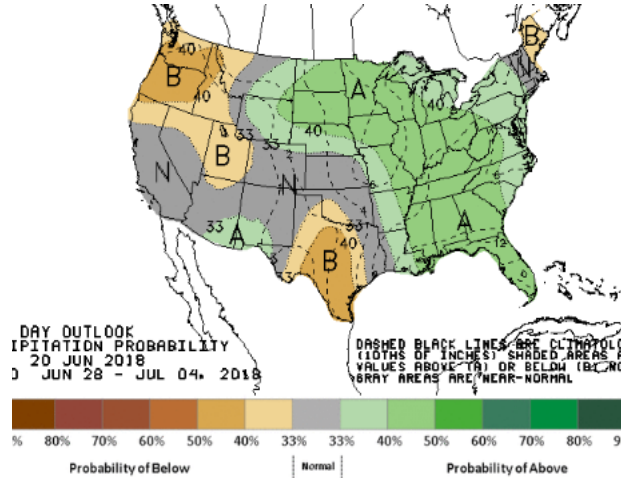


WEATHER – 8 TO 14 DAY OUTLOOK – NOAA

Temperature



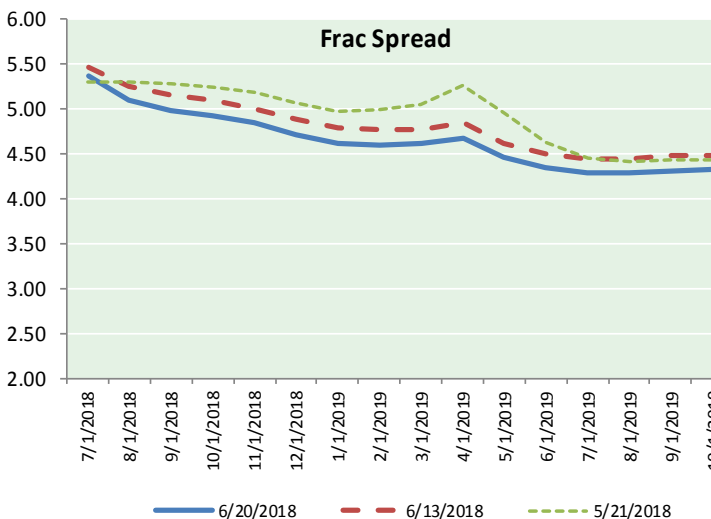
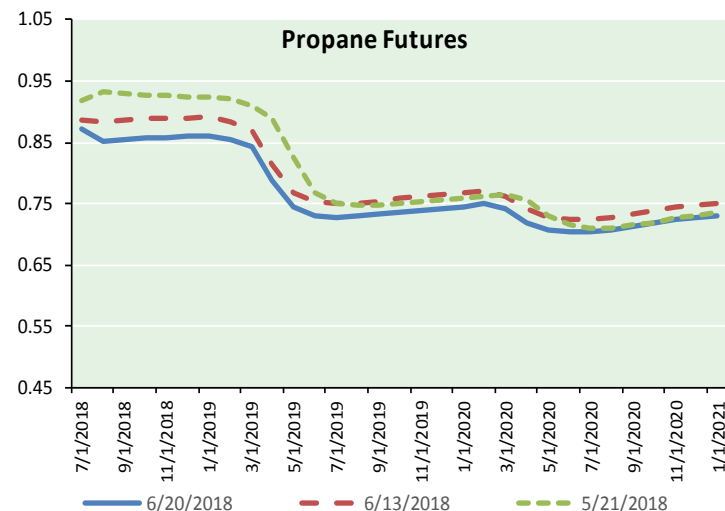
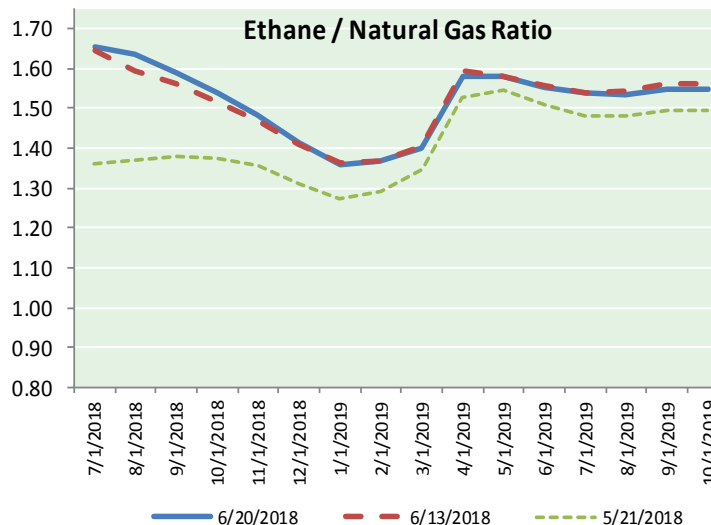
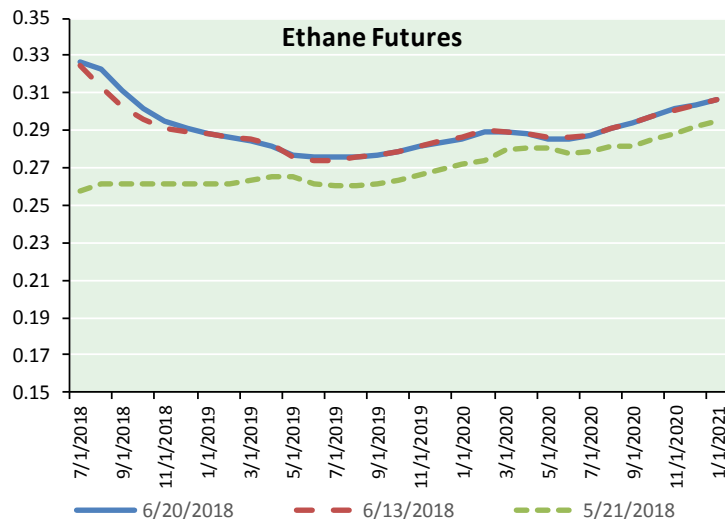
Precipitation



# NATURAL GAS NEWS



## ETHANE FUTURES, NG/ETHANE RATIO, PROPANE FUTURES, AND THE FRAC SPREAD



### CME Future Prices

#### Ethane (C2)

#### Non-LDH— Mont Belvieu

Month	Close	Change
Jul-18	0.326	0.004
Aug-18	0.323	0.011
Sep-18	0.311	0.009
Oct-18	0.302	0.006
Nov-18	0.295	0.002
Dec-18	0.291	0.000
Jan-19	0.288	(0.002)
Feb-19	0.287	(0.001)
Mar-19	0.285	(0.001)
Apr-19	0.281	(0.001)
May-19	0.277	(0.001)
Jun-19	0.275	(0.001)

1YR Strip 0.295 0.002

### CME Future Prices

#### Propane (C3)

#### Non-LDH— Mont Belvieu

Month	Close	Change
Jul-18	0.871	(0.002)
Aug-18	0.852	(0.004)
Sep-18	0.854	(0.004)
Oct-18	0.857	(0.004)
Nov-18	0.859	(0.003)
Dec-18	0.860	(0.003)
Jan-19	0.860	(0.004)
Feb-19	0.855	(0.003)
Mar-19	0.843	(0.003)
Apr-19	0.788	(0.003)
May-19	0.744	(0.003)
Jun-19	0.730	(0.003)

1YR Strip 0.831 (0.003)

# NATURAL GAS NEWS



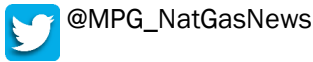
## Prompt WTI (CL) Crude Daily Sentiment

**BEARISH**



RESISTANCE  
66.44 & 67.18  
SUPPORT  
64.88 & 64.06

### FOLLOW US ON TWITTER:

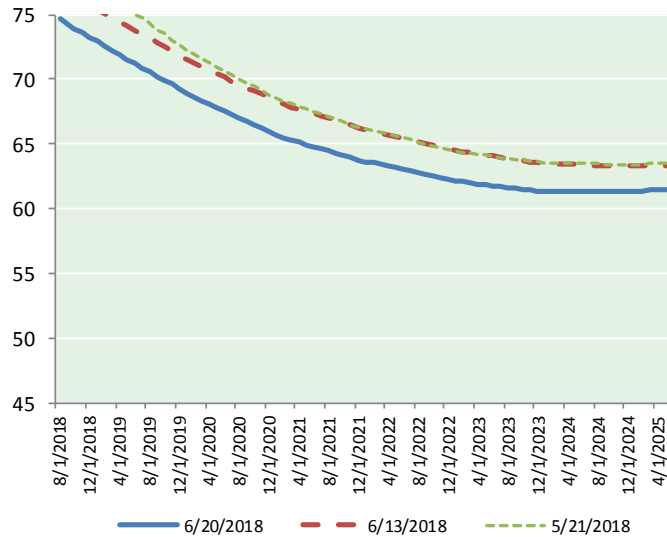


## NYMEX Brent (BZ)

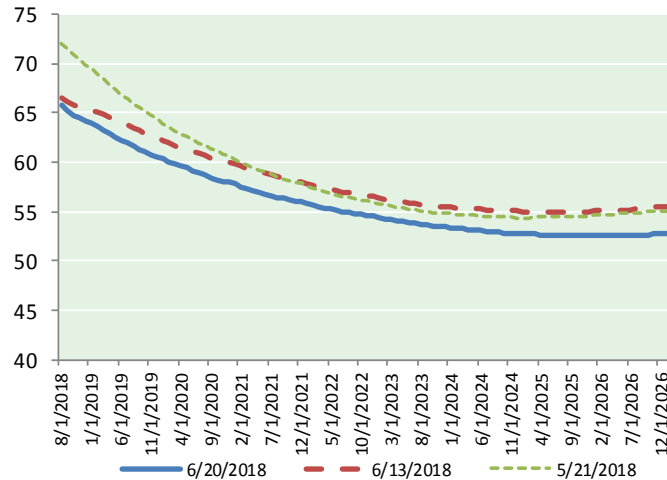
### Futures

Month	Close	Change
Aug-18	74.74	(0.34)
Sep-18	74.33	(0.31)
Oct-18	73.89	(0.27)
Nov-18	73.56	(0.27)
Dec-18	73.23	(0.27)
Jan-19	72.90	(0.28)
Feb-19	72.55	(0.30)
Mar-19	72.21	(0.30)
Apr-19	71.88	(0.31)
May-19	71.54	(0.33)
Jun-19	71.21	(0.34)
Jul-19	70.90	(0.35)
Aug-19	70.60	(0.35)
Sep-19	70.25	(0.36)
Oct-19	69.92	(0.36)
Nov-19	69.60	(0.36)
Dec-19	69.22	(0.37)
Jan-20	68.89	(0.37)
Feb-20	68.61	(0.37)
Mar-20	68.32	(0.37)
Apr-20	68.02	(0.38)
May-20	67.76	(0.37)
Jun-20	67.51	(0.37)
Jul-20	67.22	(0.37)
1YR Strip 2018	72.75	(0.31)
5YR Strip	66.47	(0.33)

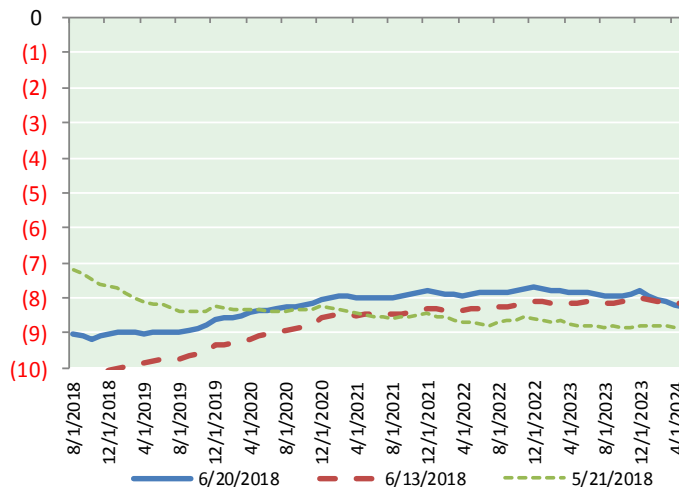
## BRENT CRUDE FORWARD CURVE



## WTI CRUDE FORWARD CURVE



## WTI-BRENT SPREAD



## FRAC Spread

### Specifications

Ethane	: 42%	66,500 btu/g
Propane	: 28%	90,830 btu/g
Butane	: 11%	102,916 btu/g
Iso-Butane	: 6%	98,935 btu/g
Natural Gasoline	: 13%	115,021 btu/g

## Prompt NGL Futures

### (\$/gallon)

	Jul-18	Close	Change
Butane	1.020	0.001	
Iso-Butane	1.348	0.004	
Nat Gasoline	1.479	(0.003)	

## NYMEX WTI (CL) Futures

Month	Close	Change
Jul-18	66.22	1.15
Aug-18	65.71	0.81
Sep-18	65.24	0.68
Oct-18	64.72	0.59
Nov-18	64.45	0.51
Dec-18	64.19	0.47
Jan-19	63.92	0.42
Feb-19	63.57	0.36
Mar-19	63.22	0.32
Apr-19	62.87	0.26
May-19	62.55	0.23
Jun-19	62.23	0.18
Jul-19	61.91	0.15
Aug-19	61.60	0.12
Sep-19	61.32	0.09
Oct-19	61.06	0.06
Nov-19	60.81	0.04
Dec-19	60.59	0.05
Jan-20	60.30	0.03
Feb-20	60.03	0.01
Mar-20	59.80	0.01
Apr-20	59.58	0.00
May-20	59.38	0.00
Jun-20	59.17	(0.01)
1YR Strip 2018	64.07	0.50
5YR Strip	58.40	0.07