

NATURAL GAS



JUNE 20, 2018

Prior Day's NYMEX Jul-18 Contract (CT)



NYMEX NG Futures

Month	Close	Change
Jul-18	2.900	(0.051)
Aug-18	2.904	(0.047)
Sep-18	2.884	(0.048)
Oct-18	2.895	(0.049)
Nov-18	2.936	(0.050)
Dec-18	3.044	(0.051)
Jan-19	3.131	(0.052)
Feb-19	3.101	(0.053)
Mar-19	3.001	(0.055)
Apr-19	2.639	(0.038)
May-19	2.601	(0.038)
Jun-19	2.627	(0.038)
Jul-19	2.657	(0.037)
Aug-19	2.664	(0.037)
Sep-19	2.650	(0.037)
Oct-19	2.667	(0.035)
Nov-19	2.722	(0.033)
Dec-19	2.849	(0.031)
Jan-20	2.950	(0.029)
Feb-20	2.921	(0.024)
Mar-20	2.830	(0.024)
Apr-20	2.538	(0.009)
May-20	2.511	(0.009)
Jun-20	2.537	(0.011)
1YR Strip	2.889	(0.048)
2018	2.927	(0.049)
5YR Strip	2.716	(0.019)

IN THE NEWS

US Approves Work On EQT Mountain Valley Natural Gas Pipe— Oil and Gas Investor: U.S. federal energy regulators approved EQT Midstream Partners LP's request to proceed with construction along various segments of its \$3.5 billion Mountain Valley natural gas pipeline from West Virginia to Virginia. The segments include construction in parts of Harrison County, West Virginia

- **US Approves Work On EQT Mountain Valley Natural Gas Pipe**
- **Australia Looks To Tackle Its Looming Gas Shortage**

and Roanoke County, Virginia, the U.S. Federal Energy Regulatory Commission (FERC) said in a filing on June 18. In addition, FERC said it will allow the company to cross the Blue Ridge Parkway in Virginia. The Blue Ridge is a national parkway linking the Shenandoah National Park in Virginia to the Great Smoky Mountains National Park in North Carolina and Tennessee. In May, the U.S. Army Corp of Engineers pulled a permit that authorized the project to discharge dredged and fill materials into several rivers because the permit was at odds with West Virginia environmental rules. For more on this story visit oilandgasinvestor.com or click <https://bit.ly/2KaLwg4>

Australia Looks To Tackle Its Looming Gas Shortage— Oil Price reported: In a strange about-face for the world's soon to be top liquified natural gas (LNG) exporter, Australia is now considering importing the fuel. On Monday, ExxonMobil, Australia's top gas supplier, said it is considering importing the super-cooled fuel to help offset an anticipated gas shortage from 2021 going forward as well as protecting its market share. ExxonMobil is also stepping up exploration off the coast of Victoria and considering developing a gas field called West Barracouta close to an existing field, the oil major also said in an emailed statement on Monday. "Combined with the existing Gippsland resource and infrastructure, an LNG import facility could ensure ExxonMobil can continue to meet our customers' needs," the company said, adding that the facility could become operational by around 2022. This disclosure comes as Australia struggles with a natural gas shortage, a unique phenomenon for the gas exporting giant. For more on this story visit oilprice.com or click <https://bit.ly/2MHTCLq>

12 MONTH CANDLESTICK (WEEKLY)



Prompt Natural Gas (NG) Daily Sentiment

BULLISH



RESISTANCE

2.94 & 2.98

SUPPORT

2.85 & 2.87

Trading Summary

NATURAL GAS

Futures	Close	Change
NG	2.900	(0.051)
Volume	412,242	(370,968)
Open Int.	1,518,054	(2,072)

CRUDE AND GASOLINE

Futures	Close	Change
Crude	65.07	(0.78)
RBOB	2.0379	(0.0167)
Crude/NG	22.44	0.12

METALS

Futures	Close	Change
Gold	1,275.60	(3.60)

EQUITIES

Exchange	Close	Change
DOW	24,700.21	(287.26)
S&P 500	-767.45	(11.16)

CURRENCY

Currency	Close	Change
EUR/USD	1.1584	(0.0006)
USD/CND	1.2405	0.0007

Contact Us

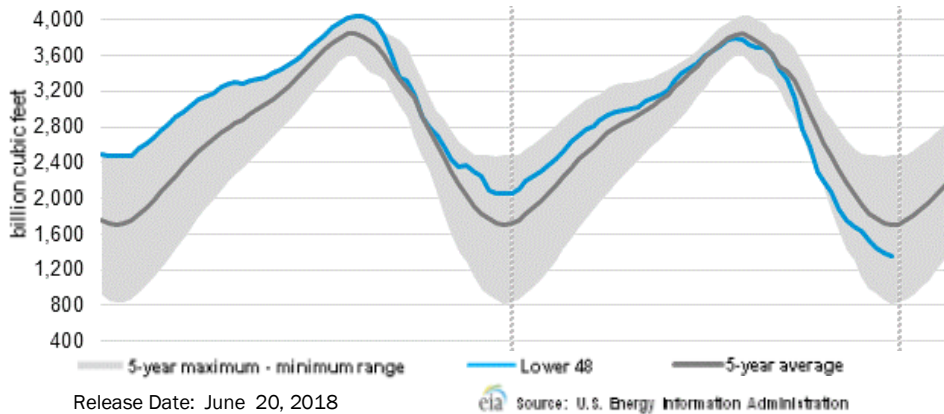


Mansfield Energy Corp
1025 Airport Pkwy
Gainesville, GA 30501
www.mansfield.energy
info@mansfieldoil.com

Phone: (800) 695-6626



WEEKLY GAS IN UNDERGROUND STORAGE WITH 5-YR RANGE



Rig Count

Report Date: June 15, 2018

	Total	Change
US -	1059	(3)
CN -	139	+27

EIA Weekly NG Storage Actual and Surveys for June 15, 2018

Released June 14, 2018

Range (74) to (89)

PIRA – (86)

Citi Futures – (87)

Reuters – (91)

EIA ACTUAL – 96

Total Working Gas In Storage

1,913 BCF

96 BCF (LAST WEEK)

(785) BCF (LAST YEAR)

(507) BCF (5-YR AVG)

U.S. Natural Gas Supply Gas Week 6/7– 6/13

Average daily values (BCF/D):

Last Year (BCF/d)

Dry Production – +72.3

Total Supply – +78.2

Last Week (BCF/d)

Dry Production – +79.6

Total Supply – +85.4

[NEXT REPORT ON Jun 22]

U.S. Natural Gas Demand Gas Week 6/7– 6/13

Average daily values (BCF/D):

Last Year (BCF/d)

Power – +28.0

Total Demand – +68.0

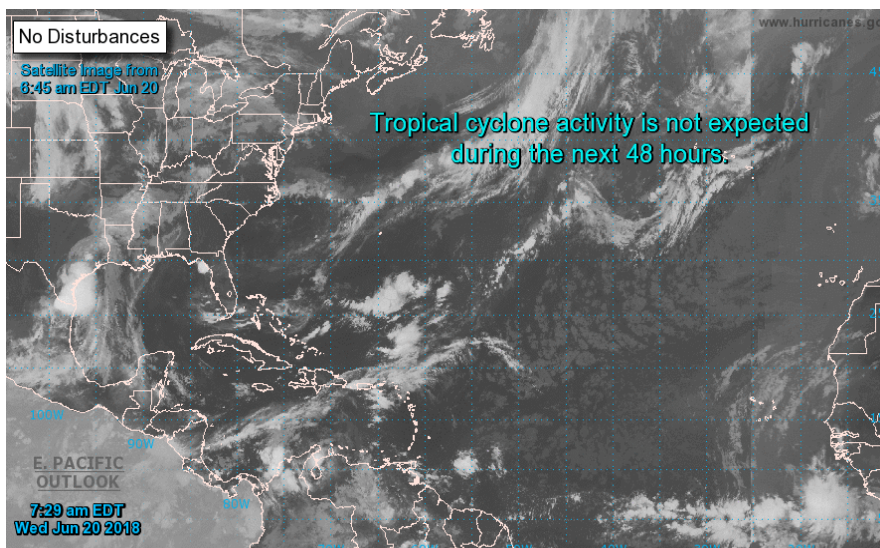
Last Week (BCF/d)

Power – +29.5

Total Demand – +71.3

[NEXT REPORT ON Jun 22]

TROPICAL STORM ACTIVITY– ATLANTIC

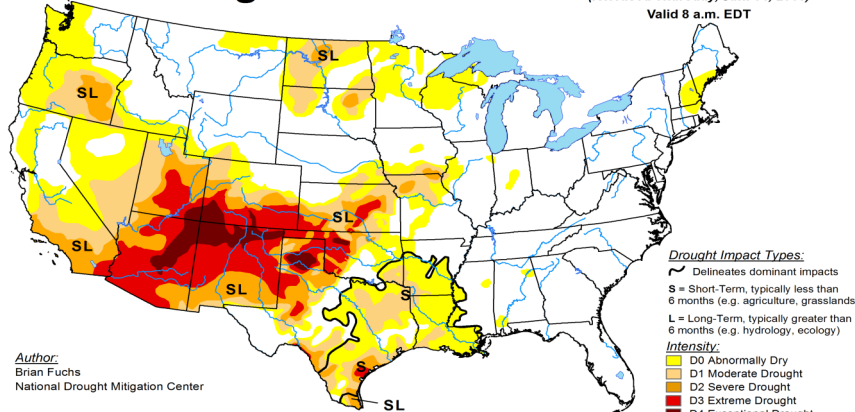


U.S. Drought Monitor

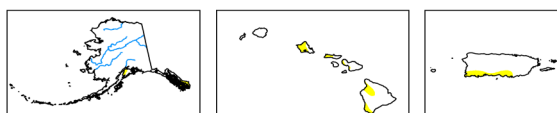
June 12, 2018

(Released Thursday, Jun. 14, 2018)

Valid 8 a.m. EDT



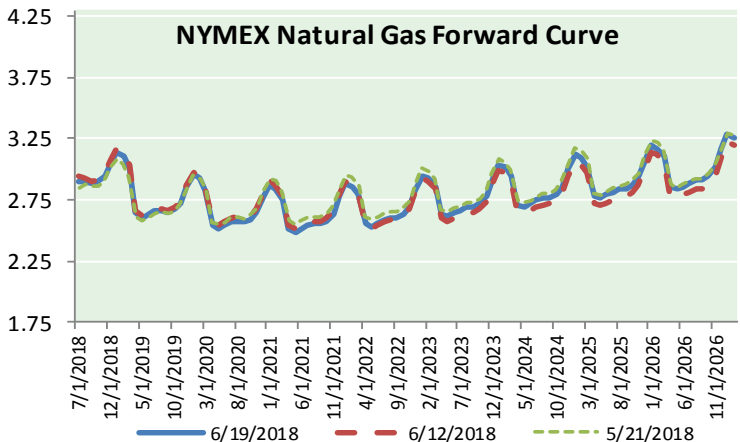
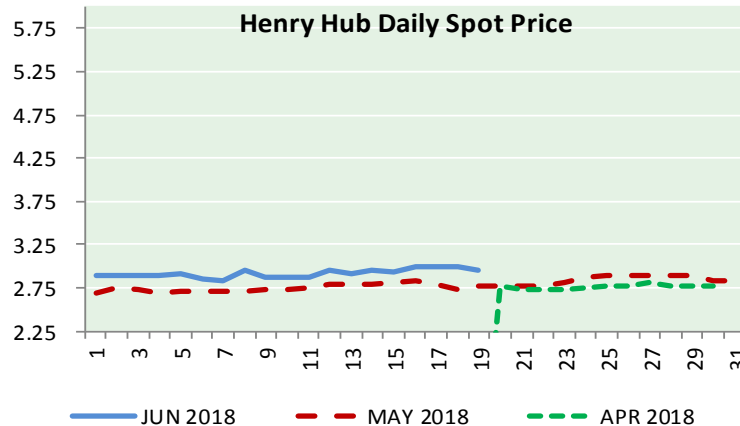
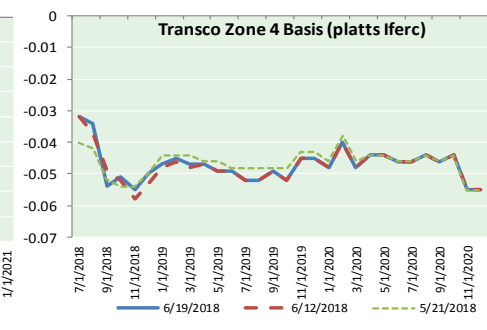
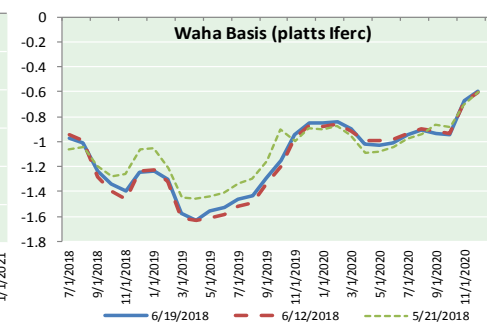
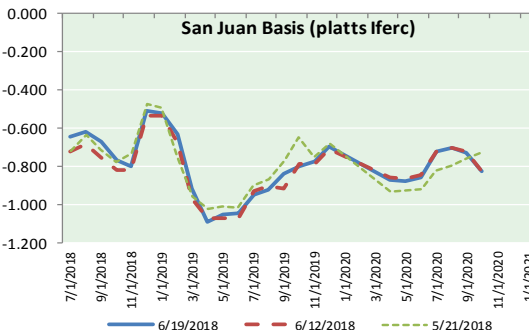
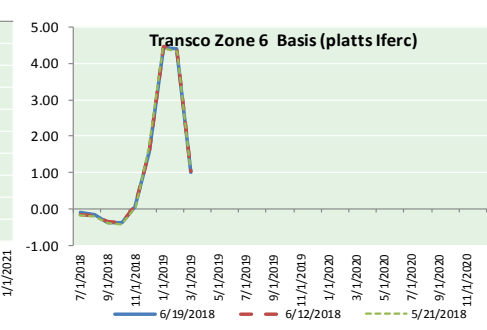
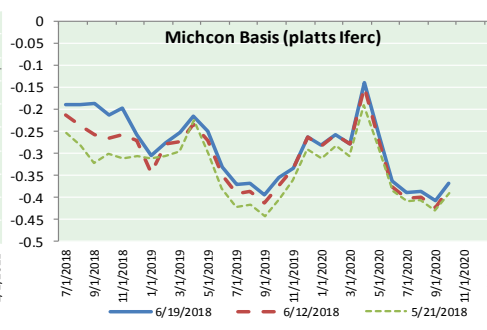
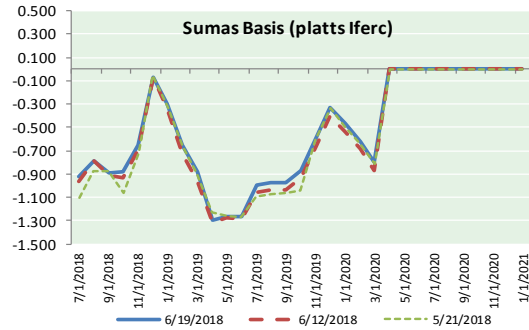
Author: Brian Fuchs, National Drought Mitigation Center



http://droughtmonitor.unl.edu/



NATURAL GAS BASIS FUTURES, HENRY HUB SPOT PRICES, AND FORWARD CURVE



NYMEX WTI Delivery

Month Average (\$/bbl)

(Excluding Weekends and Holidays)

Month: June 2018

Day	Price	Day	Price
1	65.81	16	
2		17	
3		18	65.85
4	64.75	19	65.07
5	65.52	20	
6	64.73	21	
7	65.95	22	
8	65.74	23	
9		24	
10		25	
11	66.10	26	
12	66.36	27	
13	66.64	28	
14	66.89	29	
15	65.06	30	

Average (Jun) 65.7285
(through 06/19/2018)

Average (May) 69.9832

Average (Apr) 66.3252

CME NG Option Prices

ATM Call

Month	Strike	Close	Imp Vol
Aug-18			
Sep-18	2.950	0.063	18.7
Oct-18			
Nov-18			
Dec-18			

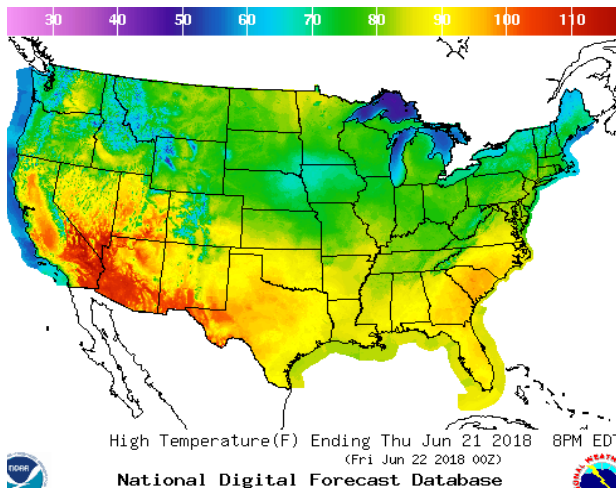
CME NG Option Prices

ATM Put

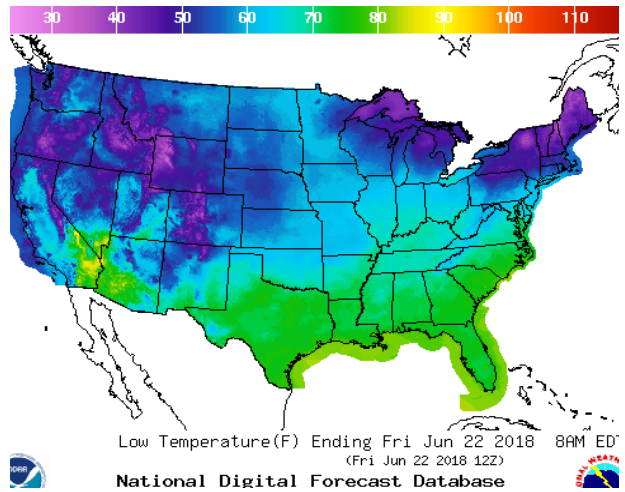
Month	Strike	Close	Imp Vol
Aug-18			
Sep-18	2.950	0.105	26.2
Oct-18			
Nov-18			
Dec-18			

WEATHER – HIGH / LOW TEMPERATURE TOMORROW

HIGH Temperature

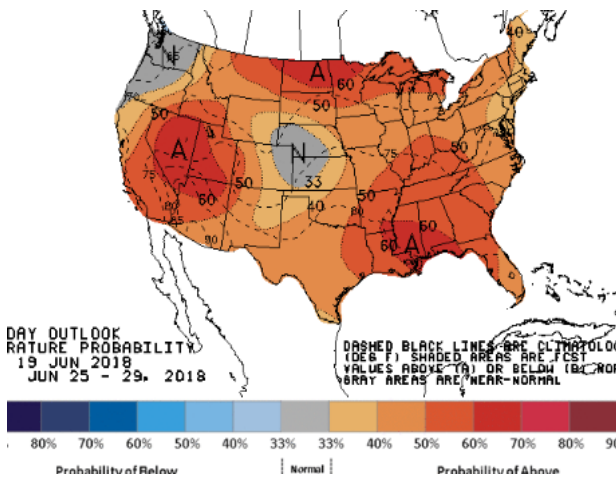


LOW Temperature

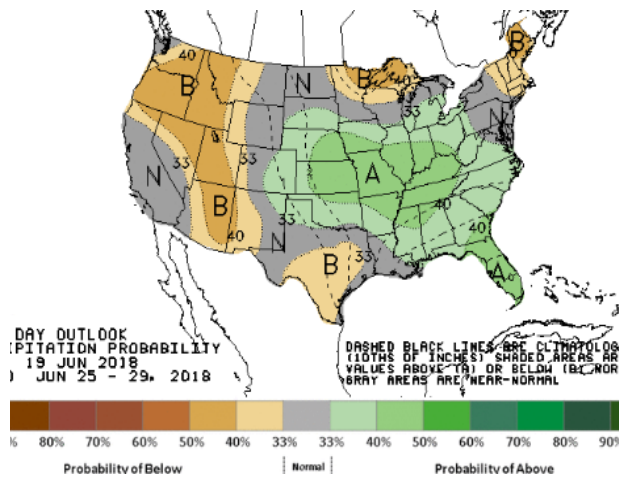


WEATHER – 6 TO 10 DAY OUTLOOK – NOAA

Temperature

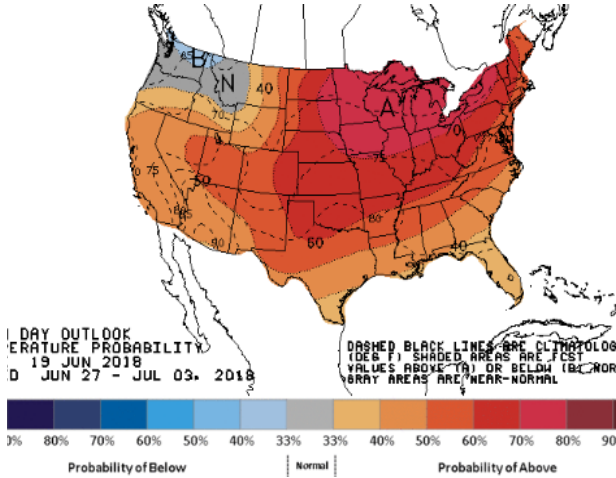


Precipitation

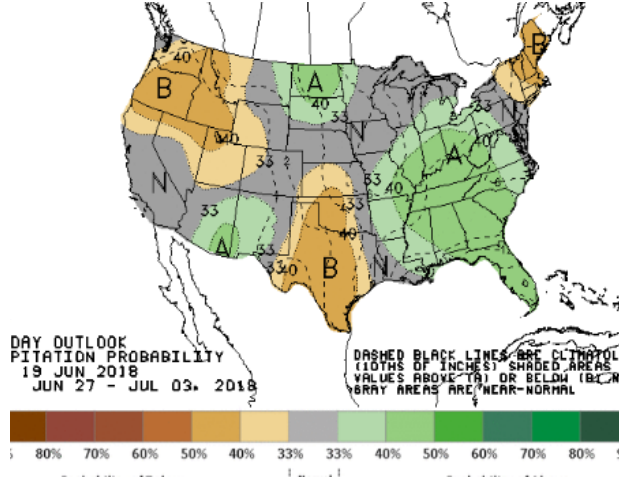


WEATHER – 8 TO 14 DAY OUTLOOK – NOAA

Temperature



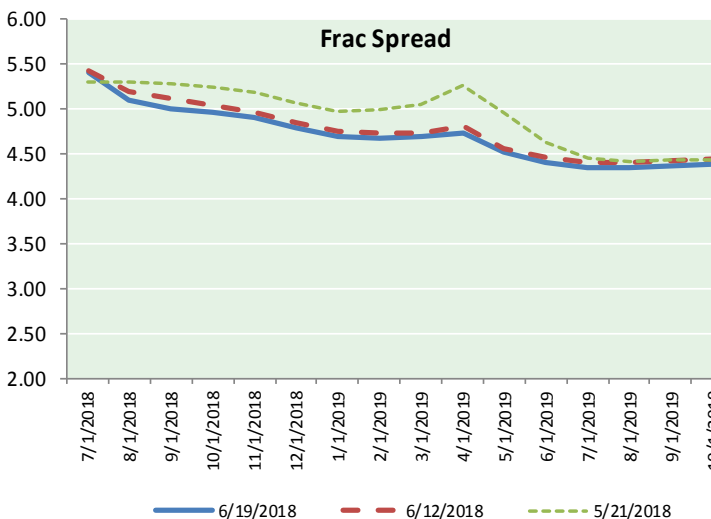
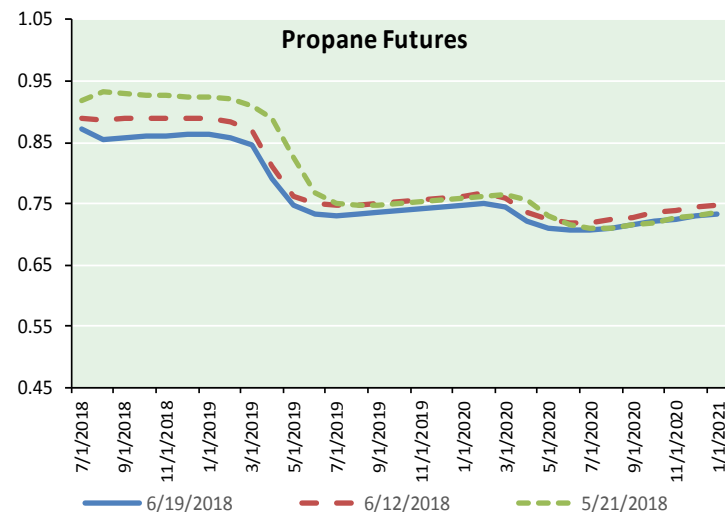
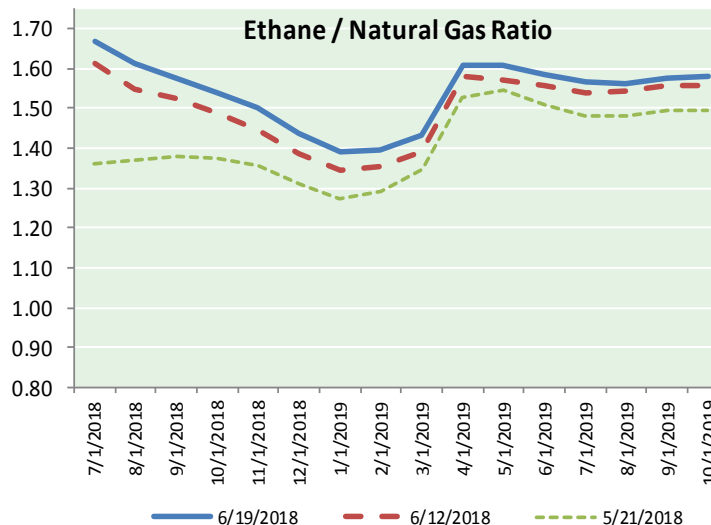
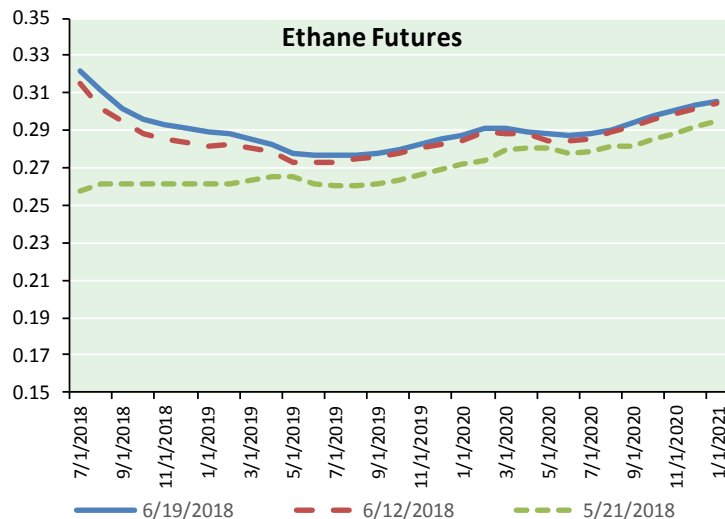
Precipitation



NATURAL GAS NEWS



ETHANE FUTURES, NG/ETHANE RATIO, PROPANE FUTURES, AND THE FRAC SPREAD



CME Future Prices

Ethane (C2)

Non-LDH— Mont Belvieu

Month	Close	Change
Jul-18	0.322	0.006
Aug-18	0.312	0.013
Sep-18	0.302	0.008
Oct-18	0.296	0.007
Nov-18	0.293	0.006
Dec-18	0.291	0.005
Jan-19	0.290	0.005
Feb-19	0.288	0.005
Mar-19	0.286	0.004
Apr-19	0.282	0.004
May-19	0.278	0.005
Jun-19	0.277	0.004

1YR Strip 0.293 0.006

CME Future Prices

Propane (C3)

Non-LDH— Mont Belvieu

Month	Close	Change
Jul-18	0.872	(0.003)
Aug-18	0.856	(0.007)
Sep-18	0.858	(0.007)
Oct-18	0.861	(0.007)
Nov-18	0.861	(0.006)
Dec-18	0.863	(0.006)
Jan-19	0.864	(0.006)
Feb-19	0.858	(0.007)
Mar-19	0.845	(0.006)
Apr-19	0.792	(0.006)
May-19	0.747	(0.007)
Jun-19	0.733	(0.008)

1YR Strip 0.834 (0.006)

NATURAL GAS NEWS



Prompt WTI (CL) Crude

Daily Sentiment

BEARISH



RESISTANCE

65.85 & 66.63

SUPPORT

64.34 & 63.61

FOLLOW US ON TWITTER:



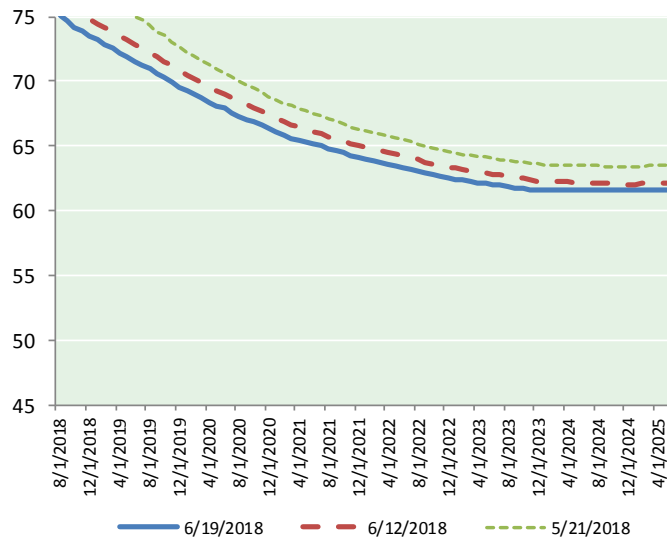
@MPG_NatGasNews

NYMEX Brent (BZ)

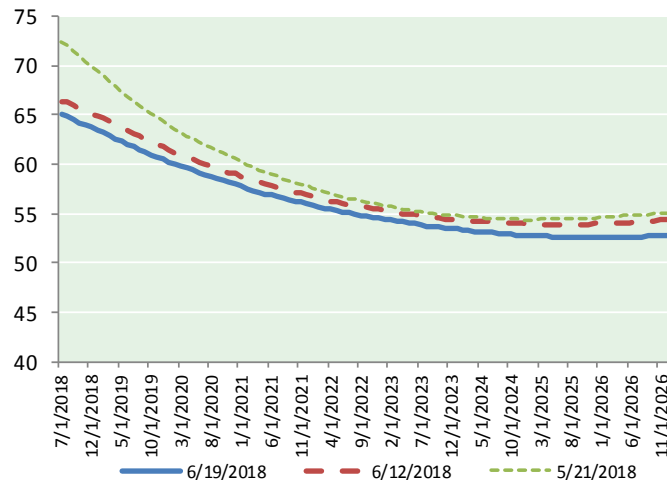
Futures

Month	Close	Change
Aug-18	75.08	(0.26)
Sep-18	74.64	(0.30)
Oct-18	74.16	(0.36)
Nov-18	73.83	(0.38)
Dec-18	73.50	(0.41)
Jan-19	73.18	(0.42)
Feb-19	72.85	(0.42)
Mar-19	72.51	(0.42)
Apr-19	72.19	(0.42)
May-19	71.87	(0.42)
Jun-19	71.55	(0.41)
Jul-19	71.25	(0.41)
Aug-19	70.95	(0.41)
Sep-19	70.61	(0.41)
Oct-19	70.28	(0.41)
Nov-19	69.96	(0.41)
Dec-19	69.59	(0.41)
Jan-20	69.26	(0.41)
Feb-20	68.98	(0.41)
Mar-20	68.69	(0.41)
Apr-20	68.40	(0.41)
May-20	68.13	(0.41)
Jun-20	67.88	(0.41)
Jul-20	67.59	(0.41)
1YR Strip	73.05	(0.39)
2018	74.24	(0.34)
5YR Strip	66.80	(0.40)

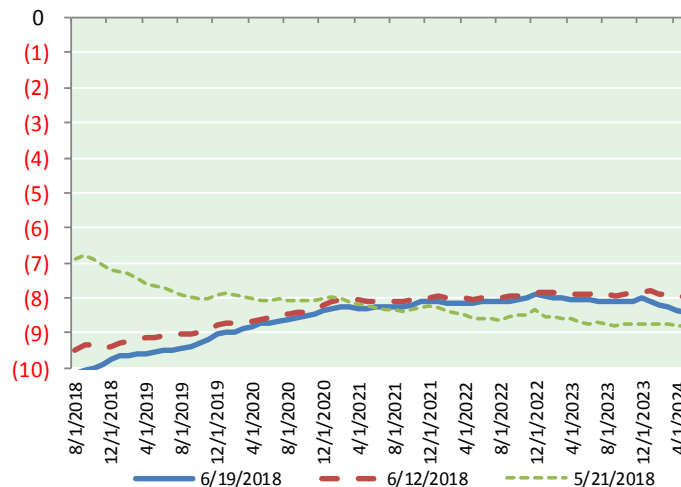
BRENT CRUDE FORWARD CURVE



WTI CRUDE FORWARD CURVE



WTI-BRENT SPREAD



FRAC Spread

Specifications

Ethane :	42%	66,500 btu/g
Propane:	28%	90,830 btu/g
Butane:	11%	102,916 btu/g
Iso-Butane:	6%	98,935 btu/g
Natural Gasoline:	13%	115,021 btu/g

Prompt NGL Futures

(\$/gallon)

	Jul-18	Close	Change
Butane	1.019	(0.004)	
Iso-Butane	1.344	(0.017)	
Nat Gasoline	1.482	(0.008)	

NYMEX WTI (CL) Futures

Month	Close	Change
Jul-18	65.07	(0.78)
Aug-18	64.90	(0.79)
Sep-18	64.56	(0.72)
Oct-18	64.13	(0.68)
Nov-18	63.94	(0.62)
Dec-18	63.72	(0.58)
Jan-19	63.50	(0.53)
Feb-19	63.21	(0.50)
Mar-19	62.90	(0.49)
Apr-19	62.61	(0.47)
May-19	62.32	(0.46)
Jun-19	62.05	(0.46)
Jul-19	61.76	(0.45)
Aug-19	61.48	(0.42)
Sep-19	61.23	(0.41)
Oct-19	61.00	(0.40)
Nov-19	60.77	(0.39)
Dec-19	60.54	(0.41)
Jan-20	60.27	(0.40)
Feb-20	60.02	(0.39)
Mar-20	59.79	(0.39)
Apr-20	59.58	(0.38)
May-20	59.38	(0.39)
Jun-20	59.18	(0.38)
1YR Strip	63.58	(0.59)
2018	64.39	(0.70)
5YR Strip	58.35	(0.40)