

NATURAL GAS



JUNE 19, 2018

Prior Day's NYMEX Jul-18 Contract (CT)



NYMEX NG Futures

| Month | Close | Change |
|-----------|-------|---------|
| Jul-18 | 2.951 | (0.071) |
| Aug-18 | 2.951 | (0.064) |
| Sep-18 | 2.932 | (0.058) |
| Oct-18 | 2.944 | (0.055) |
| Nov-18 | 2.986 | (0.053) |
| Dec-18 | 3.095 | (0.047) |
| Jan-19 | 3.183 | (0.043) |
| Feb-19 | 3.154 | (0.039) |
| Mar-19 | 3.056 | (0.036) |
| Apr-19 | 2.677 | (0.014) |
| May-19 | 2.639 | (0.007) |
| Jun-19 | 2.665 | (0.007) |
| Jul-19 | 2.694 | (0.008) |
| Aug-19 | 2.701 | (0.007) |
| Sep-19 | 2.687 | (0.008) |
| Oct-19 | 2.702 | (0.010) |
| Nov-19 | 2.755 | (0.008) |
| Dec-19 | 2.880 | (0.005) |
| Jan-20 | 2.979 | (0.003) |
| Feb-20 | 2.945 | (0.001) |
| Mar-20 | 2.854 | (0.001) |
| Apr-20 | 2.547 | (0.001) |
| May-20 | 2.520 | (0.001) |
| Jun-20 | 2.548 | (0.002) |
| 1YR Strip | 2.936 | (0.041) |
| 2018 | 2.977 | (0.058) |
| 5YR Strip | 2.734 | (0.009) |

IN THE NEWS

UPS to spend \$130 million on new natural gas vehicles, fueling stations— Reuters: Package delivery company UPS (UPS.N) on Tuesday said it will invest \$130 million to buy 730 compressed natural gas vehicles and build five more domestic CNG fueling stations as the industry moves to shift from petroleum-burning vehicles to those that use less-polluting alternative fuels. United

- **UPS to spend \$130 million on new natural gas vehicles, fueling stations**
- **U.S. oil pipeline companies, producers seek relief from steel tariffs**

Parcel Service Inc, along with rivals such as FedEx Corp (FDX.N) and Deutsche Post AG (DPWGN.DE) unit DHL, faces pressure from regulators in major cities around the world to lessen the environmental impact of its fleet. UPS has set a goal to have a quarter of the new vehicles it buys running on alternative fuels by 2020. UPS also aims to replace 40 percent of its ground transportation fuel with sources other than conventional gasoline and diesel. "We strongly believe further investment in our natural gas fleet is a key element to help us achieve our long-term goals for reducing our CO2 emissions," said Carlton Rose, president of global fleet maintenance and engineering for UPS. For more on this story visit ca.reuters.com or click <https://bit.ly/2tIHwi6>

U.S. oil pipeline companies, producers seek relief from steel tariffs— Reuters reported: Major U.S. energy companies including Plains All American Pipeline (PAA.N), Hess Corp (HES.N) and Kinder Morgan Inc (KMI.N) are among many seeking exemptions from steel-import tariffs as the United States ratchets up trade tensions with exporters including China, Canada and Mexico. There have been nearly 21,000 requests overall for exclusions submitted to the U.S. Commerce Department since the Trump administration imposed levies this year. Of those, more than 500 petitions involve pipes and related materials. Initial decisions are expected this month, offering the first clues as to how the administration will balance an agenda favoring oil and gas exports while also supporting the U.S. steel and aluminum industries. For more on this story visit oilandgasinvestor.com or click <https://reut.rs/2lh3fUG>

12 MONTH CANDLESTICK (WEEKLY)



Prompt Natural Gas (NG) Daily Sentiment

BULLISH



RESISTANCE

3.02 & 3.10

SUPPORT

2.91 & 2.88

Trading Summary

NATURAL GAS

| Futures | Close | Change |
|-----------|-----------|-----------|
| NG | 2.951 | (0.071) |
| Volume | 410,809 | (341,211) |
| Open Int. | 1,524,519 | (7,620) |

CRUDE AND GASOLINE

| Futures | Close | Change |
|----------|--------|--------|
| Crude | 65.85 | 0.79 |
| RBOB | 2.0546 | 0.0314 |
| Crude/NG | 22.31 | 0.79 |

METALS

| Futures | Close | Change |
|---------|----------|--------|
| Gold | 1,276.20 | (6.30) |

EQUITIES

| Exchange | Close | Change |
|----------|-----------|----------|
| DOW | 24,987.47 | (103.01) |
| S&P 500 | -1,054.71 | (5.91) |

CURRENCY

| Currency | Close | Change |
|----------|--------|----------|
| EUR/USD | 1.1559 | (0.0064) |
| USD/CND | 1.2405 | 0.0065 |

Contact Us



Mansfield Energy Corp
1025 Airport Pkwy
Gainesville, GA 30501

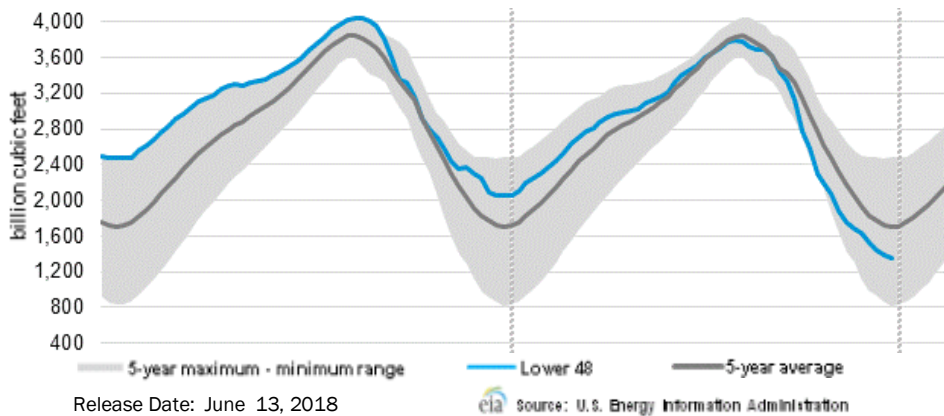
www.mansfield.energy

info@mansfieldoil.com

Phone: (800) 695-6626



WEEKLY GAS IN UNDERGROUND STORAGE WITH 5-YR RANGE



Rig Count

Report Date: June 15, 2018

| | Total | Change |
|------|-------|--------|
| US - | 1059 | (3) |
| CN - | 139 | +27 |

EIA Weekly NG Storage Actual and Surveys for June 15, 2018

Released June 14, 2018
 Range (74) to (89)
 PIRA – (86)
 Citi Futures – (87)
 Reuters – (91)

EIA ACTUAL – 96

Total Working Gas In Storage

1,913 BCF

96 BCF (LAST WEEK)
 (785) BCF (LAST YEAR)
 (507) BCF (5-YR AVG)

U.S. Natural Gas Supply Gas Week 6/7– 6/13

Average daily values (BCF/D):
 Last Year (BCF/d)
 Dry Production – +72.3
 Total Supply – +78.2
 Last Week (BCF/d)
 Dry Production – +79.6
 Total Supply – +85.4

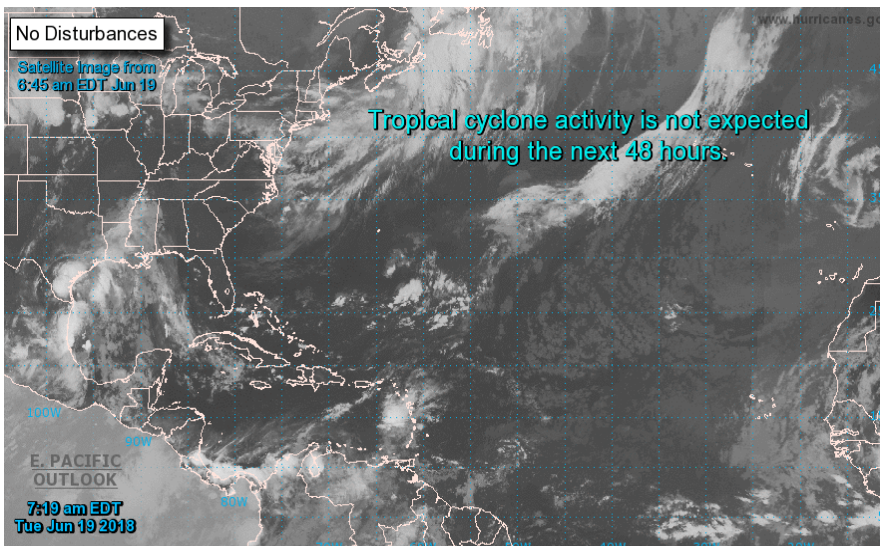
[NEXT REPORT ON Jun 22]

U.S. Natural Gas Demand Gas Week 6/7– 6/13

Average daily values (BCF/D):
 Last Year (BCF/d)
 Power – +28.0
 Total Demand – +68.0
 Last Week (BCF/d)
 Power – +29.5
 Total Demand – +71.3

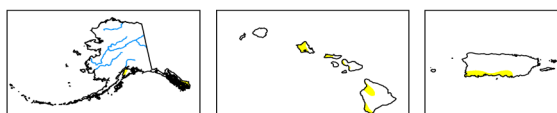
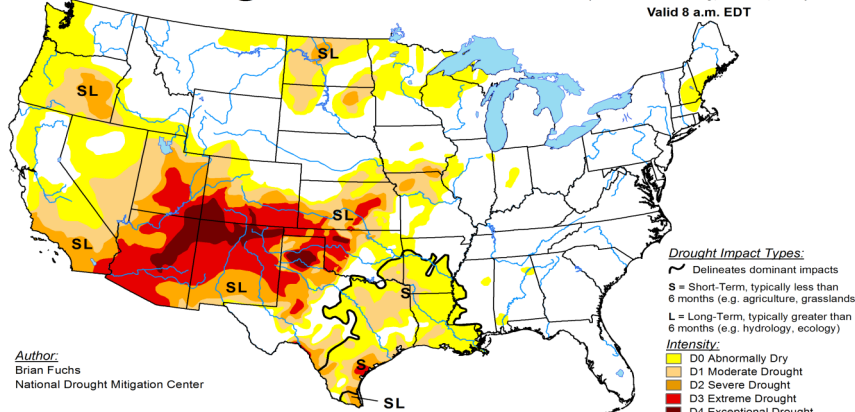
[NEXT REPORT ON Jun 22]

TROPICAL STORM ACTIVITY– ATLANTIC



U.S. Drought Monitor

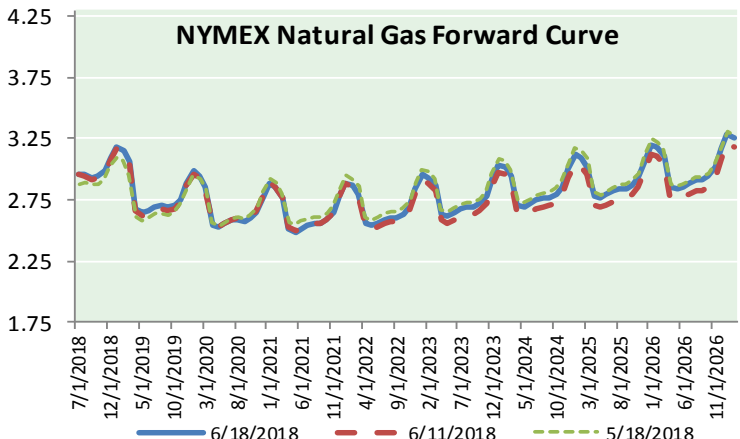
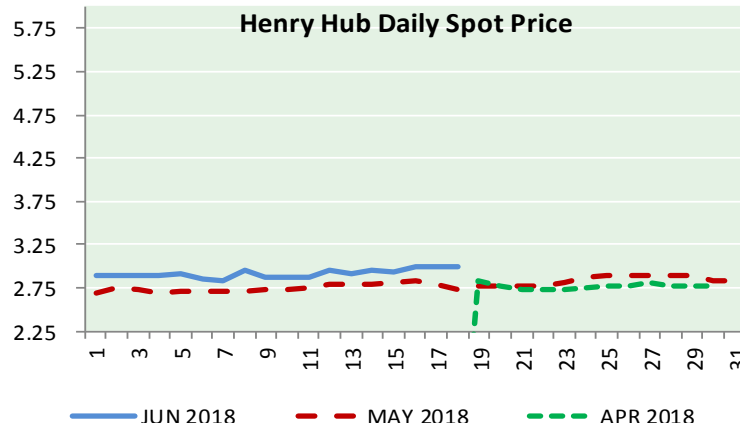
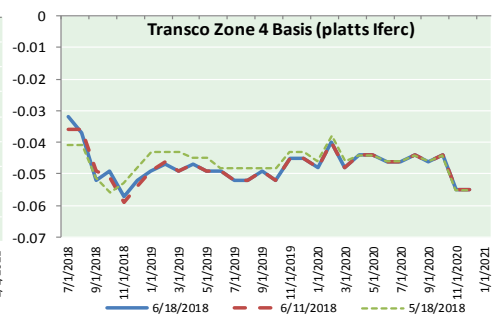
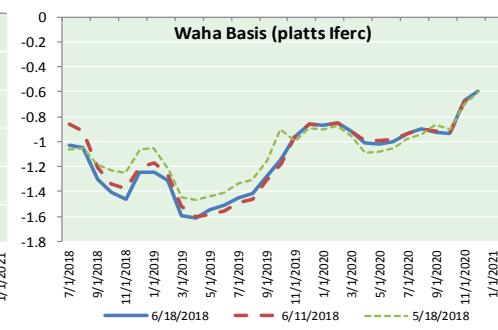
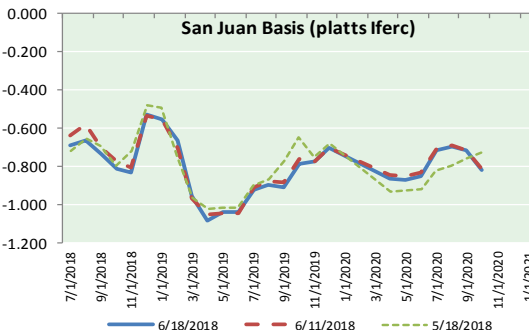
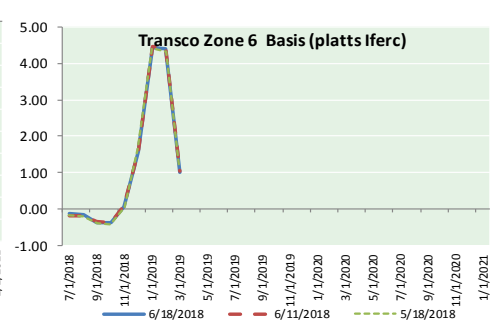
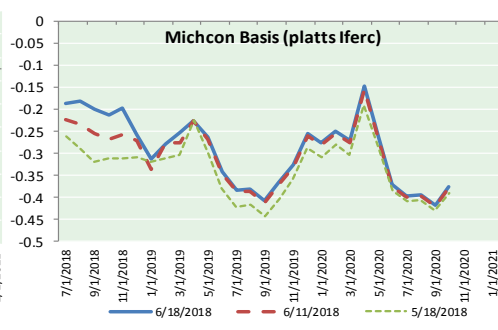
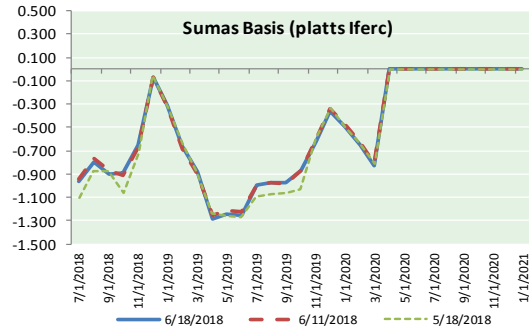
June 12, 2018
 (Released Thursday, Jun. 14, 2018)
 Valid 8 a.m. EDT



USDA NDMC NOAA
<http://droughtmonitor.unl.edu/>



NATURAL GAS BASIS FUTURES, HENRY HUB SPOT PRICES, AND FORWARD CURVE



NYMEX WTI Delivery

Month Average (\$/bbl)

(Excluding Weekends and Holidays)

Month: June 2018

| Day | Price | Day | Price |
|-----|-------|-----|-------|
| 1 | 65.81 | 16 | |
| 2 | | 17 | |
| 3 | | 18 | 65.85 |
| 4 | 64.75 | 19 | |
| 5 | 65.52 | 20 | |
| 6 | 64.73 | 21 | |
| 7 | 65.95 | 22 | |
| 8 | 65.74 | 23 | |
| 9 | | 24 | |
| 10 | | 25 | |
| 11 | 66.10 | 26 | |
| 12 | 66.36 | 27 | |
| 13 | 66.64 | 28 | |
| 14 | 66.89 | 29 | |
| 15 | 65.06 | 30 | |

Average (Jun) 65.7833
(through 06/18/2018)

Average (May) 69.9832

Average (Apr) 66.3252

CME NG Option Prices

ATM Call

| Month | Strike | Close | Imp Vol |
|--------|--------|-------|---------|
| Aug-18 | | | |
| Sep-18 | 2.900 | 0.113 | 28.1 |
| Oct-18 | | | |
| Nov-18 | | | |
| Dec-18 | | | |

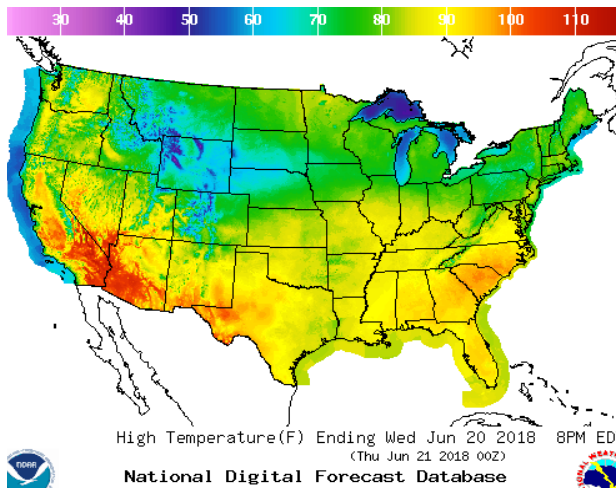
CME NG Option Prices

ATM Put

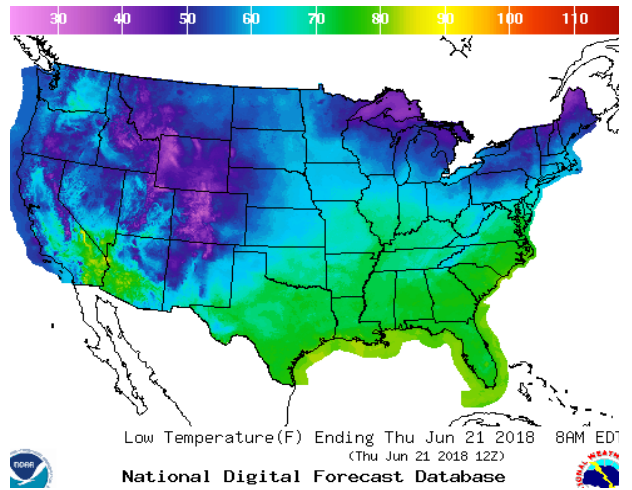
| Month | Strike | Close | Imp Vol |
|--------|--------|-------|---------|
| Aug-18 | | | |
| Sep-18 | 2.900 | 0.076 | 22.5 |
| Oct-18 | | | |
| Nov-18 | | | |
| Dec-18 | | | |

WEATHER – HIGH / LOW TEMPERATURE TOMORROW

HIGH Temperature

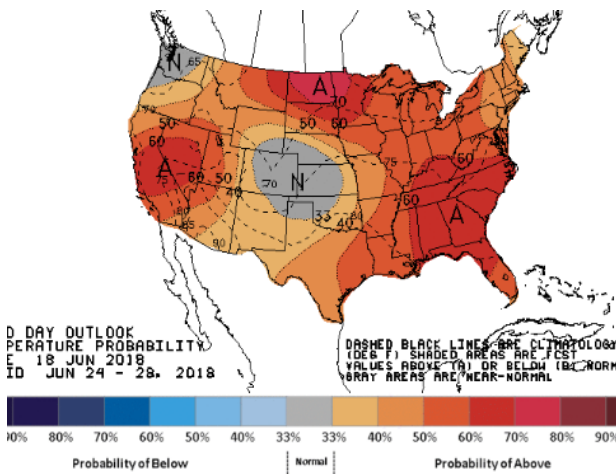


LOW Temperature

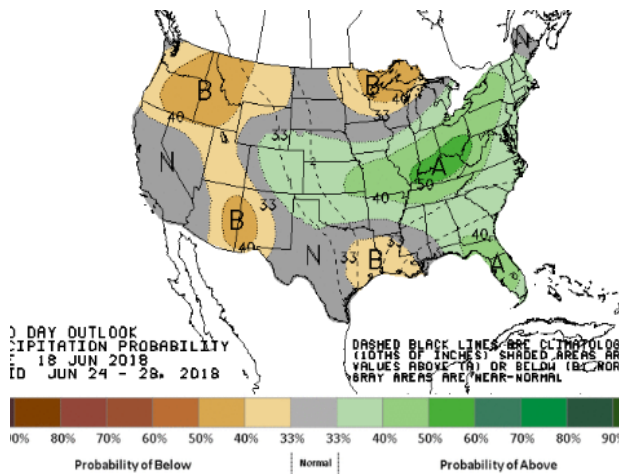


WEATHER – 6 TO 10 DAY OUTLOOK – NOAA

Temperature

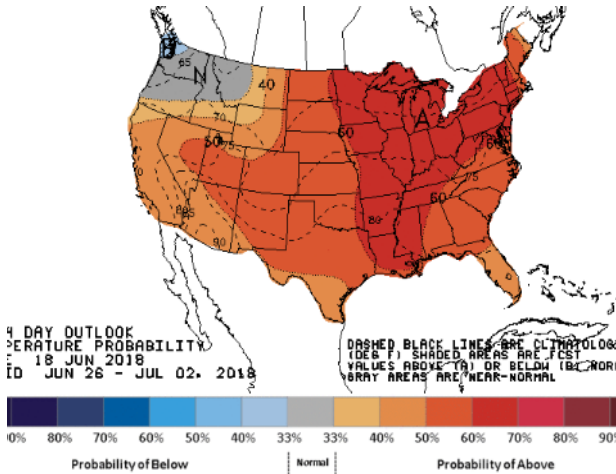


Precipitation

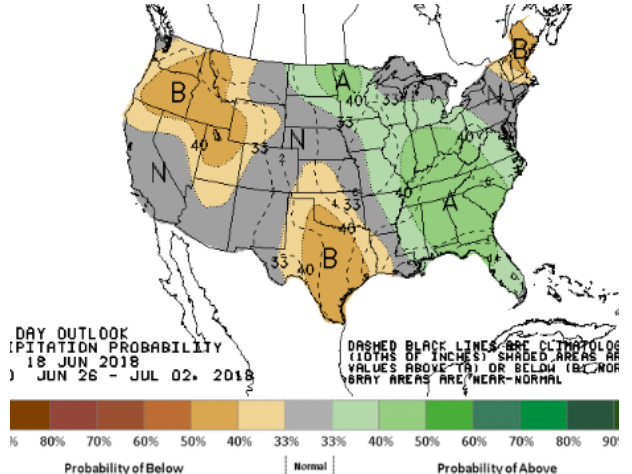


WEATHER – 8 TO 14 DAY OUTLOOK – NOAA

Temperature



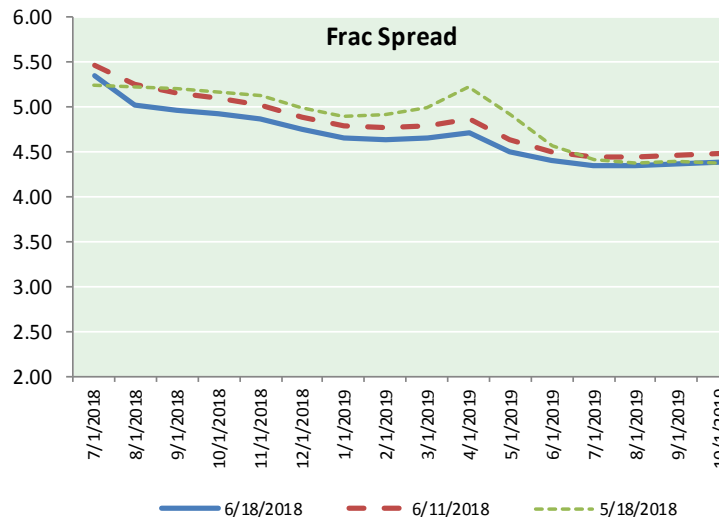
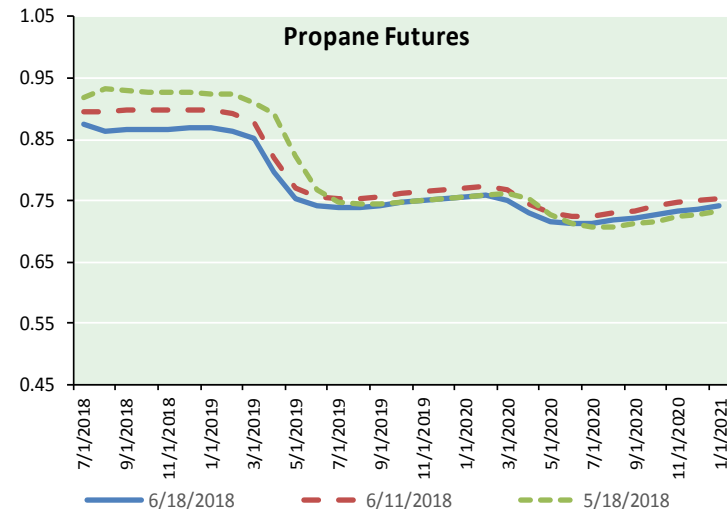
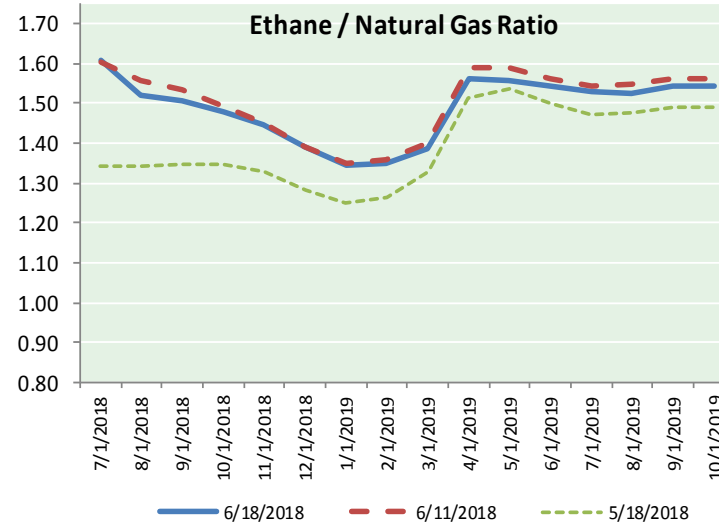
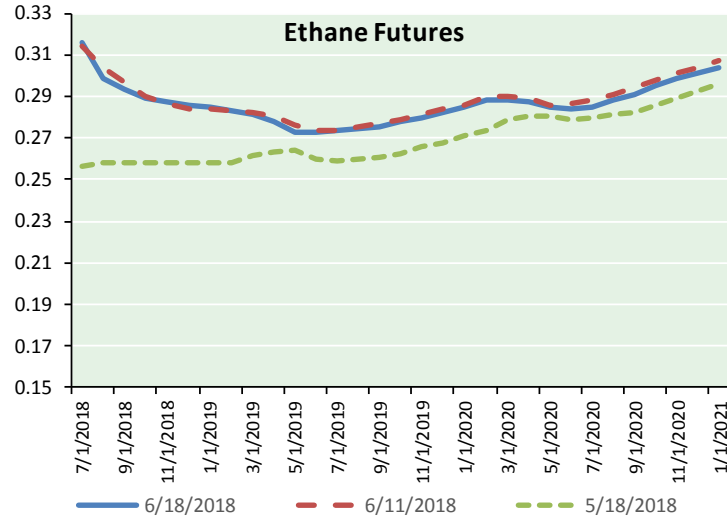
Precipitation





NATURAL GAS NEWS

ETHANE FUTURES, NG/ETHANE RATIO, PROPANE FUTURES, AND THE FRAC SPREAD



CME Future Prices

Ethane (C2)

Non-LDH— Mont Belvieu

| Month | Close | Change |
|--------|-------|---------|
| Jul-18 | 0.316 | (0.000) |
| Aug-18 | 0.299 | (0.001) |
| Sep-18 | 0.294 | 0.001 |
| Oct-18 | 0.289 | 0.001 |
| Nov-18 | 0.287 | 0.001 |
| Dec-18 | 0.286 | 0.001 |
| Jan-19 | 0.285 | 0.001 |
| Feb-19 | 0.283 | 0.000 |
| Mar-19 | 0.282 | (0.000) |
| Apr-19 | 0.278 | 0.000 |
| May-19 | 0.273 | 0.001 |
| Jun-19 | 0.273 | 0.001 |

1YR Strip 0.287 0.000

CME Future Prices

Propane (C3)

Non-LDH— Mont Belvieu

| Month | Close | Change |
|--------|-------|--------|
| Jul-18 | 0.875 | 0.003 |
| Aug-18 | 0.863 | 0.005 |
| Sep-18 | 0.865 | 0.005 |
| Oct-18 | 0.868 | 0.005 |
| Nov-18 | 0.868 | 0.004 |
| Dec-18 | 0.869 | 0.004 |
| Jan-19 | 0.870 | 0.005 |
| Feb-19 | 0.865 | 0.006 |
| Mar-19 | 0.852 | 0.007 |
| Apr-19 | 0.798 | 0.007 |
| May-19 | 0.754 | 0.009 |
| Jun-19 | 0.741 | 0.009 |

1YR Strip 0.840 0.006

NATURAL GAS NEWS



Prompt WTI (CL) Crude

Daily Sentiment

BEARISH



RESISTANCE

66.69 & 67.53

SUPPORT

64.30 & 62.75

FOLLOW US ON TWITTER:



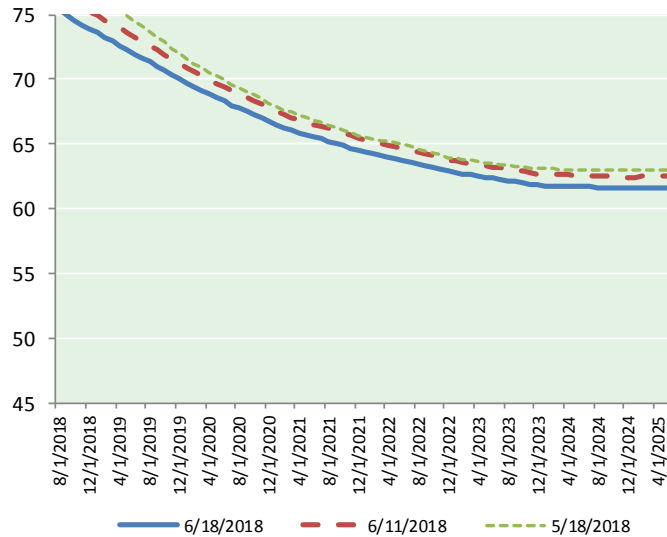
@MPG_NatGasNews

NYMEX Brent (BZ)

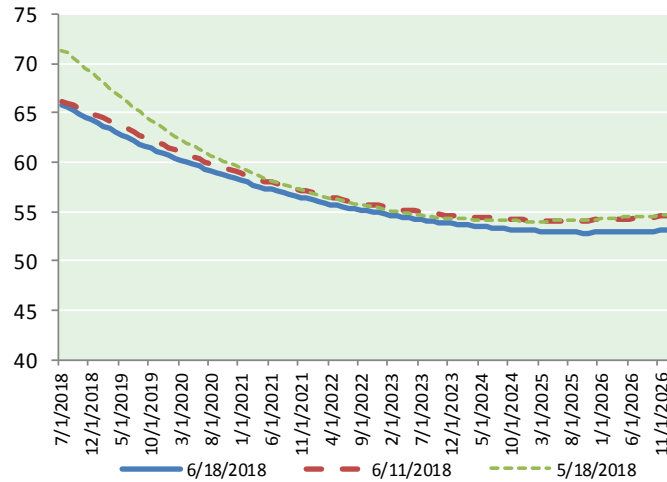
Futures

| Month | Close | Change |
|-----------|-------|--------|
| Aug-18 | 75.34 | 1.90 |
| Sep-18 | 74.94 | 1.86 |
| Oct-18 | 74.52 | 1.86 |
| Nov-18 | 74.21 | 1.83 |
| Dec-18 | 73.91 | 1.80 |
| Jan-19 | 73.60 | 1.76 |
| Feb-19 | 73.27 | 1.72 |
| Mar-19 | 72.93 | 1.68 |
| Apr-19 | 72.61 | 1.63 |
| May-19 | 72.29 | 1.60 |
| Jun-19 | 71.96 | 1.57 |
| Jul-19 | 71.66 | 1.54 |
| Aug-19 | 71.36 | 1.53 |
| Sep-19 | 71.02 | 1.50 |
| Oct-19 | 70.69 | 1.48 |
| Nov-19 | 70.37 | 1.46 |
| Dec-19 | 70.00 | 1.45 |
| Jan-20 | 69.67 | 1.43 |
| Feb-20 | 69.39 | 1.42 |
| Mar-20 | 69.10 | 1.41 |
| Apr-20 | 68.81 | 1.39 |
| May-20 | 68.54 | 1.37 |
| Jun-20 | 68.29 | 1.35 |
| Jul-20 | 68.00 | 1.33 |
| 1YR Strip | 73.44 | 1.73 |
| 2018 | 74.58 | 1.85 |
| 5YR Strip | 67.20 | 1.40 |

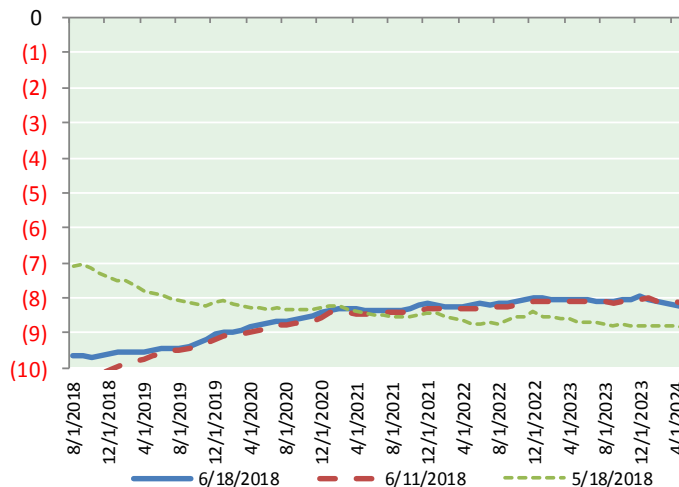
BRENT CRUDE FORWARD CURVE



WTI CRUDE FORWARD CURVE



WTI-BRENT SPREAD



FRAC Spread

Specifications

| | | |
|-----------------------|---------------|---------------|
| Ethane : | 42% | 66,500 btu/g |
| Propane: | 28% | 90,830 btu/g |
| Butane: 11% | 102,916 btu/g | |
| Iso-Butane: 6% | 98,935 btu/g | |
| Natural Gasoline: 13% | | 115,021 btu/g |

Prompt NGL Futures

(\$/gallon)

| | Jul-18 | Close | Change |
|--------------|--------|---------|--------|
| Butane | 1.022 | 0.003 | |
| Iso-Butane | 1.360 | (0.011) | |
| Nat Gasoline | 1.490 | 0.012 | |

NYMEX WTI (CL) Futures

| Month | Close | Change |
|-----------|-------|--------|
| Jul-18 | 65.85 | 0.79 |
| Aug-18 | 65.69 | 0.84 |
| Sep-18 | 65.28 | 0.88 |
| Oct-18 | 64.81 | 0.87 |
| Nov-18 | 64.56 | 0.82 |
| Dec-18 | 64.30 | 0.78 |
| Jan-19 | 64.03 | 0.74 |
| Feb-19 | 63.71 | 0.71 |
| Mar-19 | 63.39 | 0.69 |
| Apr-19 | 63.08 | 0.68 |
| May-19 | 62.78 | 0.67 |
| Jun-19 | 62.51 | 0.67 |
| Jul-19 | 62.21 | 0.67 |
| Aug-19 | 61.90 | 0.66 |
| Sep-19 | 61.64 | 0.67 |
| Oct-19 | 61.40 | 0.67 |
| Nov-19 | 61.16 | 0.67 |
| Dec-19 | 60.95 | 0.68 |
| Jan-20 | 60.67 | 0.68 |
| Feb-20 | 60.41 | 0.68 |
| Mar-20 | 60.18 | 0.67 |
| Apr-20 | 59.96 | 0.66 |
| May-20 | 59.77 | 0.67 |
| Jun-20 | 59.56 | 0.68 |
| 1YR Strip | 64.17 | 0.76 |
| 2018 | 65.08 | 0.83 |
| 5YR Strip | 58.74 | 0.72 |