

NATURAL GAS



JUNE 18, 2018

Prior Day's NYMEX Jul-18 Contract (CT)



NYMEX NG Futures

Month	Close	Change
Jul-18	3.022	0.057
Aug-18	3.015	0.057
Sep-18	2.990	0.055
Oct-18	2.999	0.050
Nov-18	3.039	0.044
Dec-18	3.142	0.040
Jan-19	3.226	0.039
Feb-19	3.193	0.036
Mar-19	3.092	0.032
Apr-19	2.691	0.022
May-19	2.646	0.019
Jun-19	2.672	0.020
Jul-19	2.702	0.020
Aug-19	2.708	0.019
Sep-19	2.695	0.019
Oct-19	2.712	0.016
Nov-19	2.763	0.015
Dec-19	2.885	0.010
Jan-20	2.982	0.010
Feb-20	2.946	0.010
Mar-20	2.855	0.012
Apr-20	2.548	(0.003)
May-20	2.521	(0.003)
Jun-20	2.550	(0.003)
1YR Strip	2.977	0.039
2018	3.035	0.051
5YR Strip	2.742	0.009

IN THE NEWS

Dubuque Firefighters evacuate homes due to natural gas leak— Oil Price reported: Dubuque Firefighters evacuated six homes Sunday afternoon after one residence became filled with natural gas. According to a news release, it happened about 1:40 p.m. at 225 York Street. That's near Dodge Street and South Grandview Avenue. Someone called the fire department after smelling natu-

- Dubuque Firefighters evacuate homes due to natural gas leak
- China Surprises With Threat On US Energy Exports

ral gas in the residence, and firefighters found elevated levels of natural gas when they arrived. Black Hills Energy and Alliant Energy disconnected gas and electric service to the house, fire crews ventilated the residence, workers restored utilities, and firefighters allowed residents to return to their homes. No injuries were reported. The Dubuque Fire Department has not provided a reason for the natural gas leak. For more on this story visit [kcrj.com](https://bit.ly/2MDm9Sq) or click <https://bit.ly/2MDm9Sq>

China Surprises With Threat On US Energy Exports— Oil and Gas Investor reported: Beijing surprised oil markets with threats to levy tariffs on imports of U.S. crude oil, natural gas and other energy products on June 15, just as China has risen to the top of the list of importers of oil from the United States. China responded to \$50 billion in tariffs imposed by U.S. President Donald Trump with a similar amount of levies on a variety of U.S. goods. But China also said it would impose tariffs on U.S. energy products, which analysts considered a surprise as previous tariff threats had centered on agricultural goods and automobiles. "This is a big deal. China is essentially the largest customer for U.S. crude now, and so for crude it's an issue, let alone when you involve [refined] products, too. This is obviously a big development," said Matt Smith, director of commodity research at ClipperData. China currently imports about 363,000 barrels of U.S. crude daily, on par with Canada as the biggest U.S. crude importer, according to U.S. Energy Department figures. It also takes in an additional 200,000 barrels a day (bbl/d) of other products like propane. For more on this story visit oilandgasinvestor.com or click <https://bit.ly/2JLc8EJ>

12 MONTH CANDLESTICK (WEEKLY)



Prompt Natural Gas (NG) Daily Sentiment

BULLISH



RESISTANCE

3.05 & 3.08

SUPPORT

2.98 & 2.94

Trading Summary

NATURAL GAS

Futures	Close	Change
NG	3.022	0.057
Volume	477,491	(436,557)
Open Int.	1,533,600	17,805

CRUDE AND GASOLINE

Futures	Close	Change
Crude	65.06	(1.83)
RBOB	2.0232	(0.0678)
Crude/NG	21.53	(1.03)

METALS

Futures	Close	Change
Gold	1,274.60	4.60

EQUITIES

Exchange	Close	Change
DOW	25,090.48	(84.83)
S&P 500	-1,157.72	(2.83)

CURRENCY

Currency	Close	Change
EUR/USD	1.1617	0.0007
USD/CND	1.2405	(0.0021)

Contact Us



Mansfield Energy Corp
1025 Airport Pkwy
Gainesville, GA 30501
www.mansfield.energy
info@mansfieldoil.com

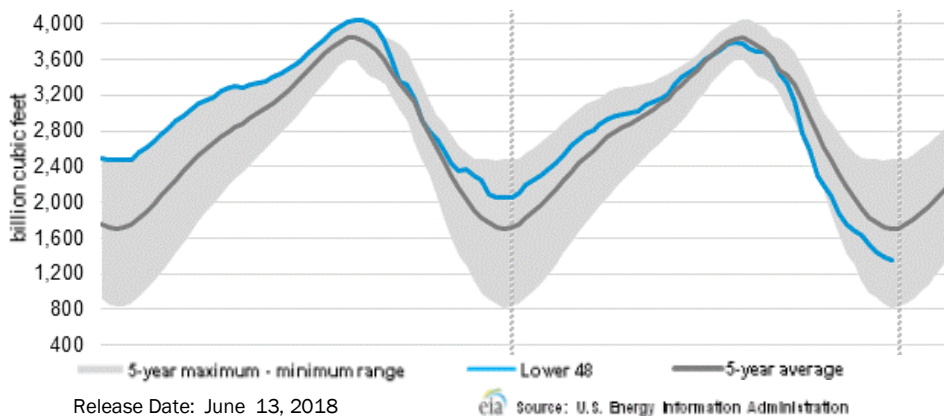
Phone: (800) 695-6626





NATURAL GAS NEWS

WEEKLY GAS IN UNDERGROUND STORAGE WITH 5-YR RANGE



Rig Count

Report Date: June 8, 2018

	Total	Change
US -	1062	+2
CN -	112	+13

EIA Weekly NG Storage Actual and Surveys for June 15, 2018

Released June 14, 2018

Range (74) to (89)

PIRA – (86)

Citi Futures – (87)

Reuters – (91)

EIA ACTUAL – 96

Total Working Gas In Storage

1,913 BCF

96 BCF (LAST WEEK)

(785) BCF (LAST YEAR)

(507) BCF (5-YR AVG)

U.S. Natural Gas Supply Gas Week 6/7– 6/13

Average daily values (BCF/D):

Last Year (BCF/d)

Dry Production – +72.3

Total Supply – +78.2

Last Week (BCF/d)

Dry Production – +79.6

Total Supply – +85.4

[NEXT REPORT ON Jun 22]

U.S. Natural Gas Demand Gas Week 6/7– 6/13

Average daily values (BCF/d):

Last Year (BCF/d)

Power – +28.0

Total Demand – +68.0

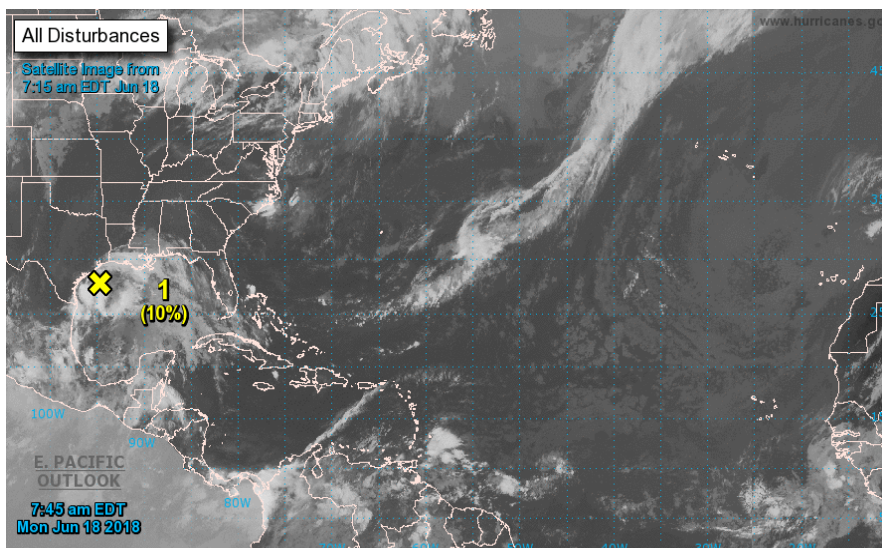
Last Week (BCF/d)

Power – +29.5

Total Demand – +71.3

[NEXT REPORT ON Jun 22]

TROPICAL STORM ACTIVITY— ATLANTIC



Tropical Weather Outlook

NWS National Hurricane Center Miami FL

800 AM EDT Mon Jun 18 2018

For the North Atlantic...Caribbean Sea and the Gulf of Mexico:

1. Disorganized showers and thunderstorms over the northwestern Gulf of Mexico are associated with an upper-level low pressure system interacting with a surface trough located near the Texas coast. Development of this system is not anticipated before it moves inland over Texas later today and tonight. However, heavy rainfall and flash flooding across portions of southern and southeastern Texas are likely to continue during the next few days. For more details on this disturbance and the threat for heavy rainfall, please see products issued by your local weather office and High Seas Forecasts issued by the National Weather Service.

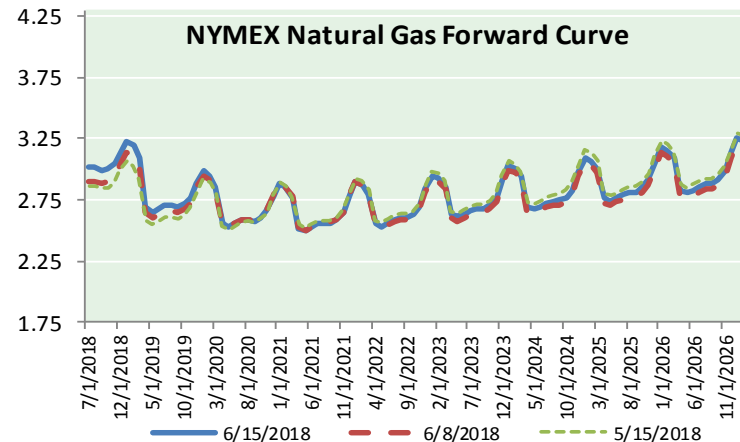
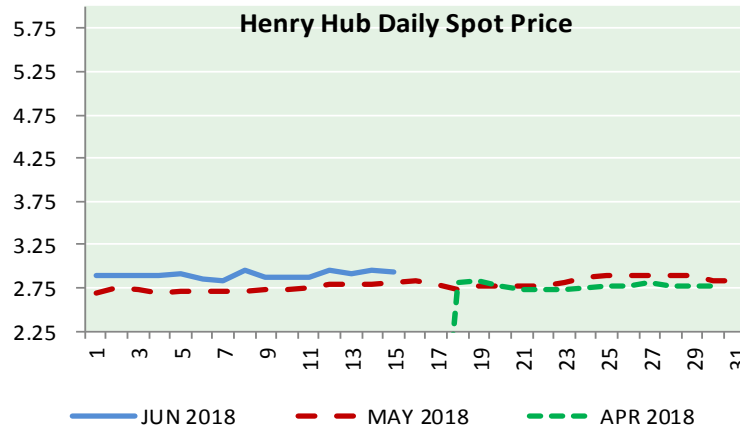
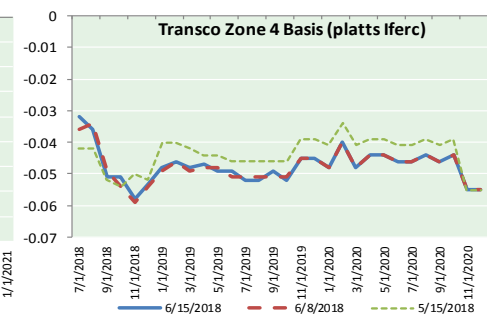
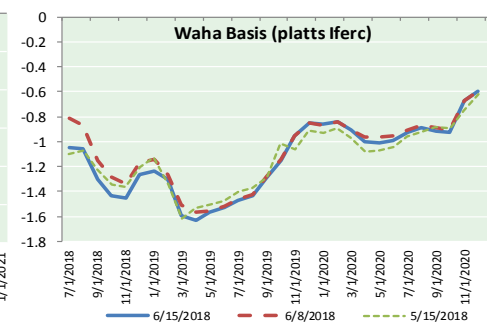
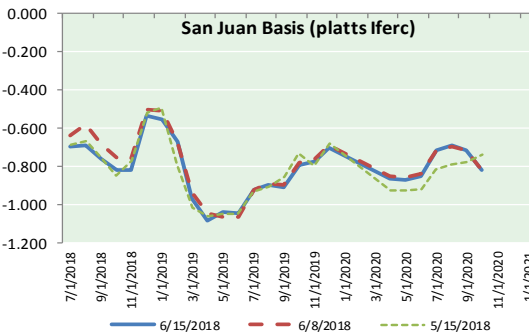
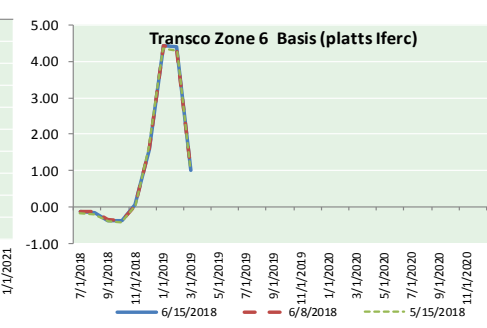
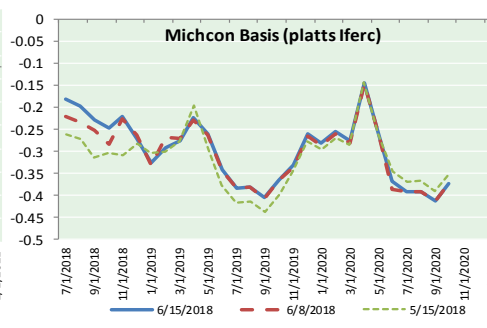
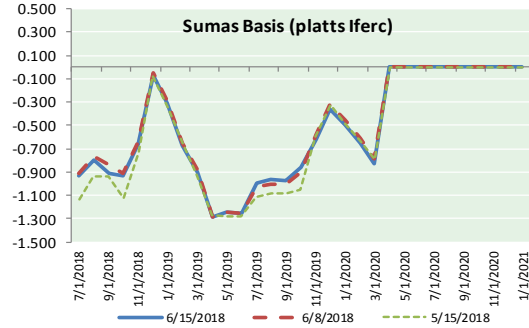
* Formation chance through 48 hours...low...10 percent.

* Formation chance through 5 days...low...10 percent.



NATURAL GAS NEWS

NATURAL GAS BASIS FUTURES, HENRY HUB SPOT PRICES, AND FORWARD CURVE



NYMEX WTI Delivery

Month Average (\$/bbl)

(Excluding Weekends and Holidays)

Month: June 2018

Day	Price	Day	Price
1	65.81	16	
2		17	
3		18	
4	64.75	19	
5	65.52	20	
6	64.73	21	
7	65.95	22	
8	65.74	23	
9		24	
10		25	
11	66.10	26	
12	66.36	27	
13	66.64	28	
14	66.89	29	
15	65.06	30	

Average (Jun) 65.7773
(through 06/15/2018)

Average (May) 69.9832

Average (Apr) 66.3252

CME NG Option Prices

ATM Call

Month	Strike	Close	Imp Vol
Aug-18			
Sep-18	3.000	0.102	26.2
Oct-18			
Nov-18			
Dec-18			

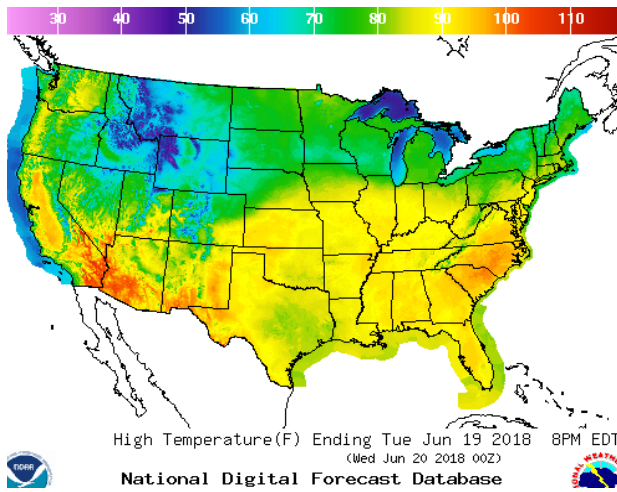
CME NG Option Prices

ATM Put

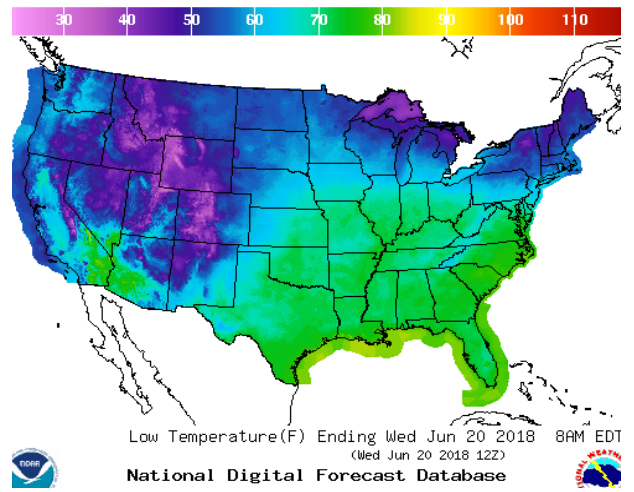
Month	Strike	Close	Imp Vol
Aug-18			
Sep-18	3.000	0.074	18.7
Oct-18			
Nov-18			
Dec-18			

WEATHER – HIGH / LOW TEMPERATURE TOMORROW

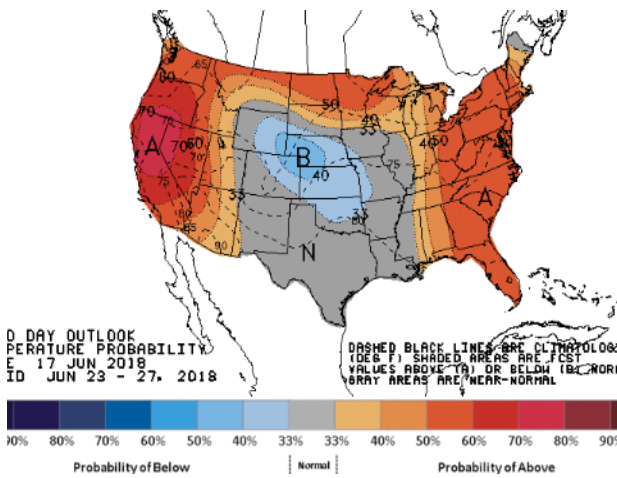
HIGH Temperature



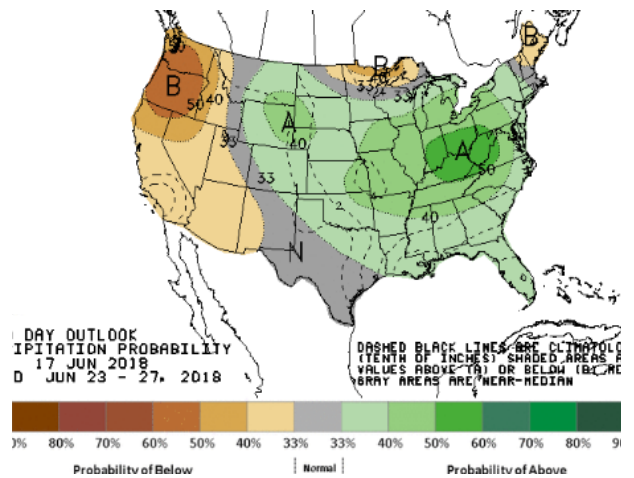
LOW Temperature



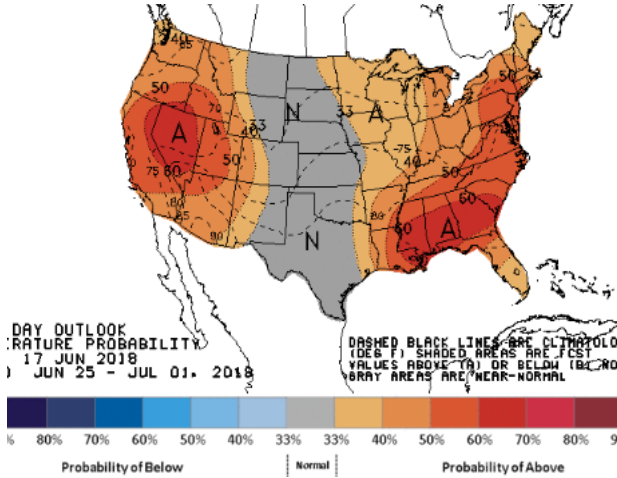
WEATHER – 6 TO 10 DAY OUTLOOK – NOAA
Temperature



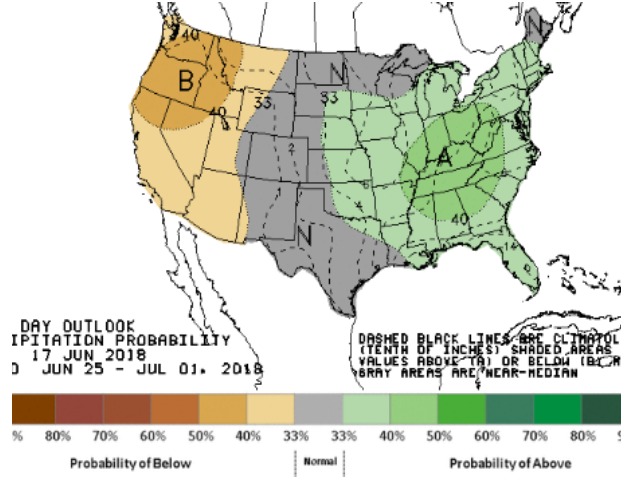
Precipitation



WEATHER – 8 TO 14 DAY OUTLOOK – NOAA
Temperature



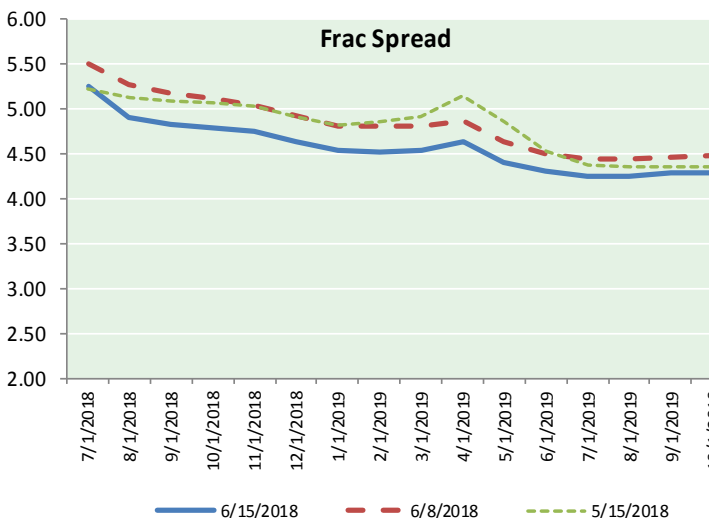
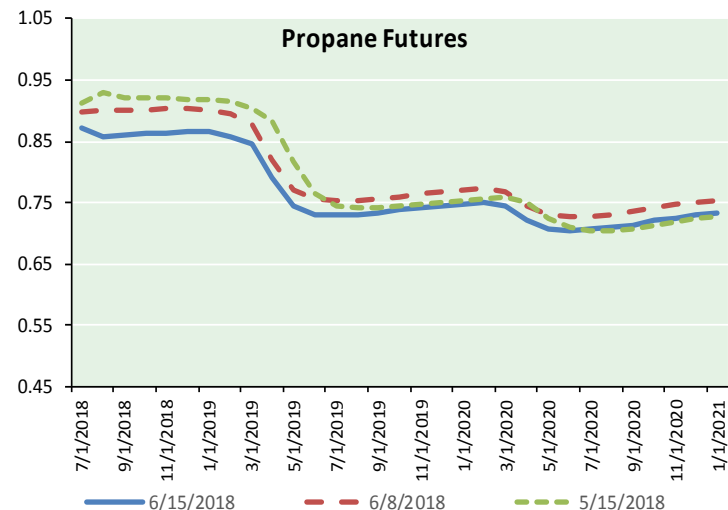
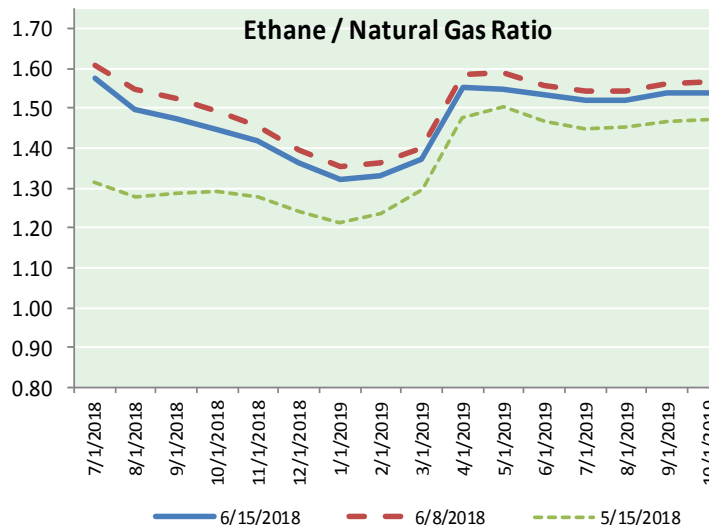
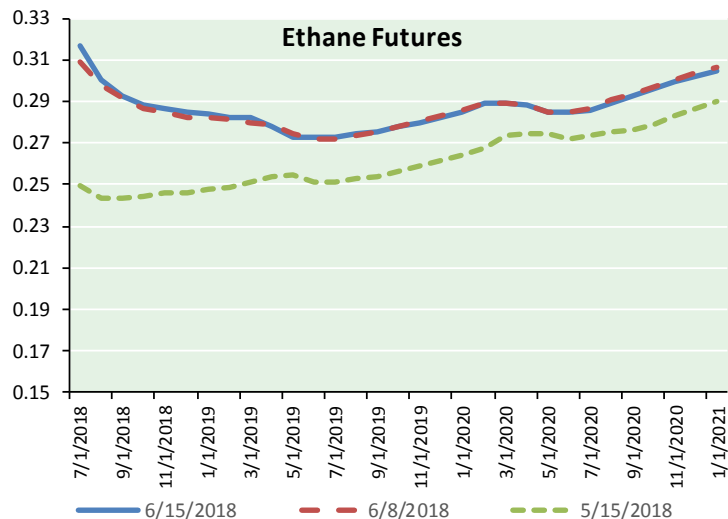
Precipitation





NATURAL GAS NEWS

ETHANE FUTURES, NG/ETHANE RATIO, PROPANE FUTURES, AND THE FRAC SPREAD



CME Future Prices

Ethane (C2)

Non-LDH— Mont Belvieu

Month	Close	Change
Jul-18	0.316	(0.002)
Aug-18	0.300	(0.005)
Sep-18	0.293	(0.004)
Oct-18	0.288	(0.004)
Nov-18	0.286	(0.003)
Dec-18	0.285	(0.002)
Jan-19	0.284	(0.002)
Feb-19	0.283	(0.002)
Mar-19	0.282	(0.002)
Apr-19	0.278	(0.002)
May-19	0.273	(0.003)
Jun-19	0.273	(0.003)

1YR Strip 0.287 (0.003)

CME Future Prices

Propane (C3)

Non-LDH— Mont Belvieu

Month	Close	Change
Jul-18	0.872	(0.015)
Aug-18	0.858	(0.027)
Sep-18	0.860	(0.027)
Oct-18	0.863	(0.027)
Nov-18	0.864	(0.027)
Dec-18	0.865	(0.027)
Jan-19	0.865	(0.027)
Feb-19	0.858	(0.026)
Mar-19	0.845	(0.025)
Apr-19	0.790	(0.024)
May-19	0.745	(0.023)
Jun-19	0.732	(0.022)

1YR Strip 0.835 (0.025)

NATURAL GAS NEWS



Prompt WTI (CL) Crude

Daily Sentiment

BEARISH



RESISTANCE

66.67 & 68.28

SUPPORT

63.87 & 62.68

FOLLOW US ON TWITTER:



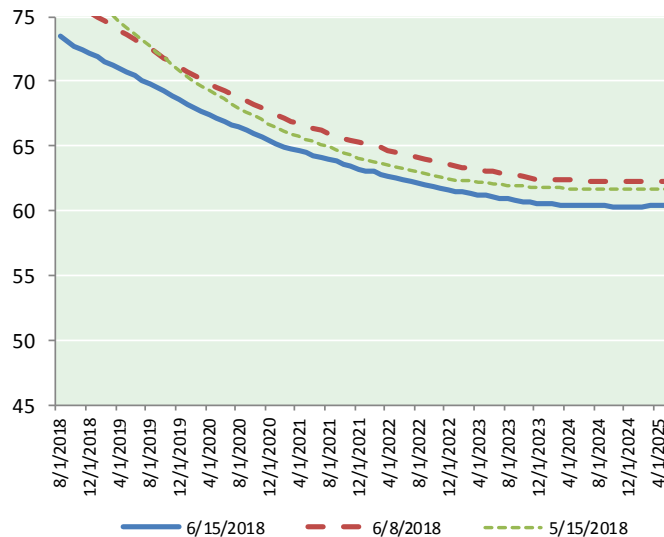
@MPG_NatGasNews

NYMEX Brent (BZ)

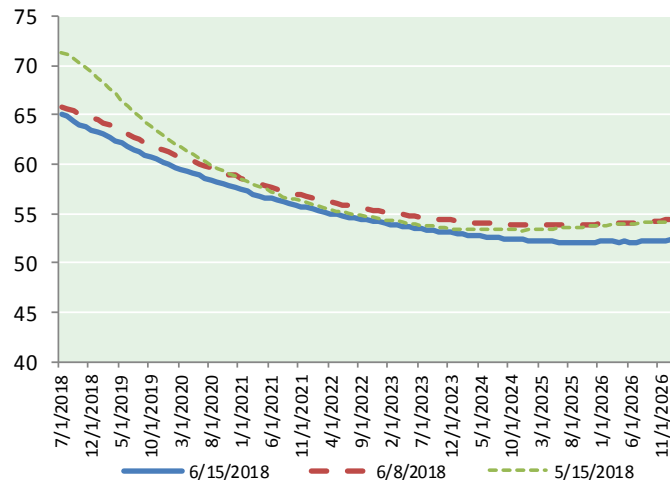
Futures

Month	Close	Change
Aug-18	73.44	(2.50)
Sep-18	73.08	(2.54)
Oct-18	72.66	(2.54)
Nov-18	72.38	(2.52)
Dec-18	72.11	(2.51)
Jan-19	71.84	(2.49)
Feb-19	71.55	(2.48)
Mar-19	71.25	(2.48)
Apr-19	70.98	(2.48)
May-19	70.69	(2.47)
Jun-19	70.39	(2.46)
Jul-19	70.12	(2.43)
Aug-19	69.83	(2.42)
Sep-19	69.52	(2.40)
Oct-19	69.21	(2.39)
Nov-19	68.91	(2.37)
Dec-19	68.55	(2.35) (1)
Jan-20	68.24	(2.34) (2)
Feb-20	67.97	(2.32) (3)
Mar-20	67.69	(2.31) (4)
Apr-20	67.42	(2.29) (5)
May-20	67.17	(2.27) (6)
Jun-20	66.94	(2.25) (7)
Jul-20	66.67	(2.24) (8)
1YR Strip	71.71	(2.49) (9)
2018	72.73	(2.52) (10)
5YR Strip	65.81	(2.16)

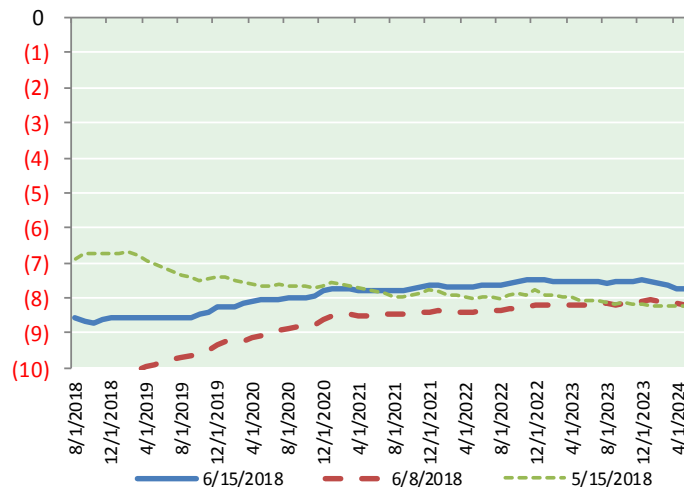
BRENT CRUDE FORWARD CURVE



WTI CRUDE FORWARD CURVE



WTI-BRENT SPREAD



FRAC Spread

Specifications

Ethane : 42%	66,500 btu/g
Propane: 28%	90,830 btu/g
Butane: 11%	102,916 btu/g
Iso-Butane: 6%	98,935 btu/g
Natural Gasoline: 13%	115,021 btu/g

Prompt NGL Futures

(\$/gallon)

	Jul-18	Close	Change
Butane	1.019		(0.014)
Iso-Butane	1.372		0.004
Nat Gasoline	1.478		(0.028)

NYMEX WTI (CL) Futures

Month	Close	Change
Jul-18	65.06	(1.83)
Aug-18	64.85	(1.84)
Sep-18	64.40	(1.87)
Oct-18	63.94	(1.85)
Nov-18	63.74	(1.80)
Dec-18	63.52	(1.77)
Jan-19	63.29	(1.77)
Feb-19	63.00	(1.79)
Mar-19	62.70	(1.82)
Apr-19	62.40	(1.83)
May-19	62.11	(1.84)
Jun-19	61.84	(1.83)
Jul-19	61.54	(1.82)
Aug-19	61.24	(1.82)
Sep-19	60.97	(1.80)
Oct-19	60.73	(1.79)
Nov-19	60.49	(1.78)
Dec-19	60.27	(1.76)
Jan-20	59.99	(1.75)
Feb-20	59.73	(1.75)
Mar-20	59.51	(1.74)
Apr-20	59.30	(1.72)
May-20	59.10	(1.71)
Jun-20	58.88	(1.72)
1YR Strip	63.40	(1.82)
2018	64.25	(1.83)
5YR Strip	58.02	(1.65)