

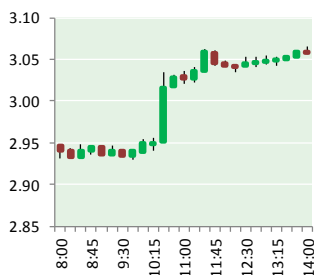
NATURAL GAS



NEWS

JUNE 16, 2017

Prior Day's NYMEX Jul-17 Contract (CT)



NYMEX NG Futures

Month	Close	Change
Jul-17	3.056	0.123
Aug-17	3.078	0.125
Sep-17	3.064	0.127
Oct-17	3.086	0.124
Nov-17	3.150	0.113
Dec-17	3.283	0.108
Jan-18	3.366	0.103
Feb-18	3.348	0.099
Mar-18	3.287	0.091
Apr-18	2.897	0.041
May-18	2.862	0.035
Jun-18	2.890	0.033
Jul-18	2.917	0.030
Aug-18	2.925	0.029
Sep-18	2.903	0.028
Oct-18	2.920	0.027
Nov-18	2.969	0.026
Dec-18	3.099	0.022
Jan-19	3.186	0.021
Feb-19	3.162	0.018
Mar-19	3.096	0.018
Apr-19	2.735	0.004
May-19	2.690	0.002
Jun-19	2.718	0.002
1YR Strip	3.114	0.094
2017	3.120	0.120
5YR Strip	2.933	0.031

IN THE NEWS

[BP Energy Partners selling midstream portfolio company -sources](#)
 — Nasdaq reports:BP Energy Partners, an energy investment company backed by oil tycoon T. Boone Pickens, is

- **BP Energy Partners selling midstream portfolio company -sources**
- **Natural Gas Price Jumps 3% on Smaller-Than-Expected Inventory Increase**

selling portfolio company Pinnacle Midstream, according to four sources familiar with the matter. Houston-based Pinnacle, which operates natural gas and crude gathering, processing and transloading services, could sell for at least \$300 million, one of the sources said. The move comes as deal-making has heated up for companies that provide pipeline, processing and storage facilities in U.S. shale basins. In April, funds managed by private equity firm Blackstone Group LP <BX.N> agreed to acquire EagleClaw Midstream Ventures for about \$2 billion. Earlier, Targa Resources Corp <TRGP.N> snapped up Outrigger Energy LLC's Permian Basin gathering and processing assets for \$1.5 billion. For more visit [nasdaq.com](http://bit.ly/2sx7bqj) or click the following link <http://bit.ly/2sx7bqj>

[Natural Gas Price Jumps 3% on Smaller-Than-Expected Inventory Increase](#) - 24/7 Wall St. reports: The U.S. Energy Information Administration (EIA) reported Thursday morning that U.S. natural gas stocks increased by 78 billion cubic feet for the week ending June 9. Analysts were expecting a storage injection of 89 billion cubic feet. The five-year average for the week is an injection of 87 billion cubic feet, and last year's storage injection for the week totaled 68 billion cubic feet. Natural gas inventories rose by 106 billion cubic feet in the week ending June 2. Demand for the next week is expected to be moderate largely due to expected higher temperatures in the eastern half of the United States into the weekend. For more visit 247wallst.com or click the following link <http://bit.ly/2t6Off1>

12 MONTH CANDLESTICK (WEEKLY)



Prompt Natural Gas (NG) Daily Sentiment BEARISH



RESISTANCE
3.11 & 3.15
SUPPORT
2.97 & 2.88

Trading Summary

NATURAL GAS

Futures	Close	Change
NG	3.056	0.123
Volume	439,043	27,812
Open Int.	1,462,883	(8,557)

CRUDE AND GASOLINE

Futures	Close	Change
Crude	44.46	(0.27)
RBOB	1.4357	0.0030
Crude/NG	14.55	(0.70)

METALS

Futures	Close	Change
Gold	1,252.20	2.60

EQUITIES

Exchange	Close	Change
DOW	21,359.90	(14.66)
S&P 500	2,294.62	(143.30)

CURRENCY

Currency	Close	Change
EUR/USD	1.1154	(0.0065)
USD/CND	1.3232	(0.0034)

Contact Us



Mansfield Energy Corp
 1025 Airport Pkwy
 Gainesville, GA 30501

www.mansfield.energy

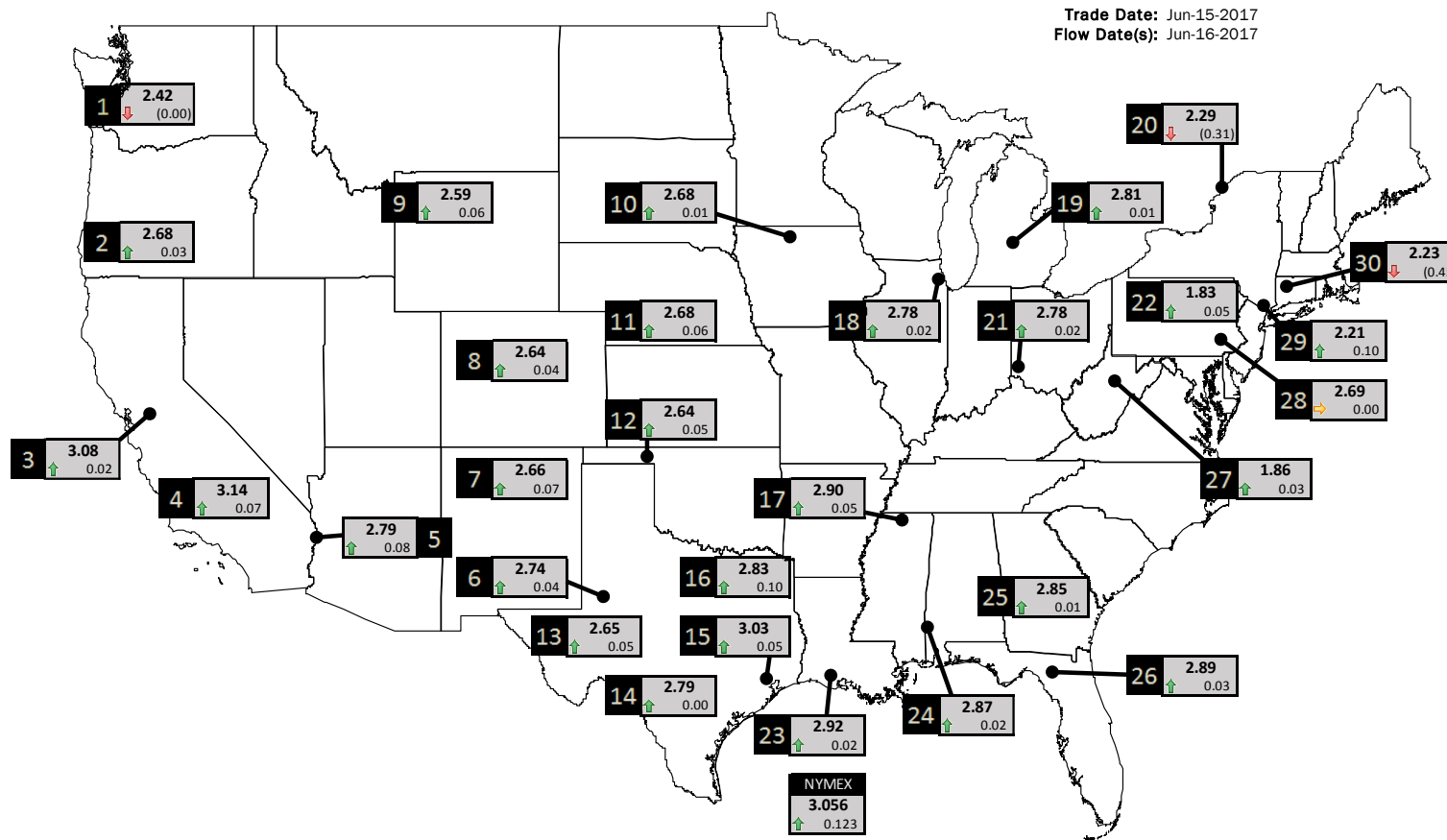
info@mansfieldoil.com

Phone: (800) 695-6626



NATURAL GAS NEWS

PHYSICAL SPOT NATURAL GAS PRICE MAP



ID	DAILY INDEX	PRICE	CHANGE
1	Stanfield	2.42	(0.00)
2	Malin	2.68	0.03
3	PG&E - Citygate	3.08	0.02
4	SoCal-Citygate	3.14	0.07
5	SoCal Border	2.79	0.08
6	Waha	2.74	0.04
7	EPSJ Blanco Pool	2.66	0.07
8	Opal Plant Tailgate	2.64	0.04
9	NWP-Wyoming	2.59	0.06
10	Ventura	2.68	0.01

ID	DAILY INDEX	PRICE	CHANGE
11	NGPL-Midcont Pool	2.68	0.06
12	Panhandle	2.64	0.05
13	EP-Permian	2.65	0.05
14	TGP-ZO	2.79	0.00
15	Houston Ship Channel	3.03	0.05
16	NGPL-TXOK	2.83	0.10
17	TETCO-M1 30	2.90	0.05
18	Chicago Citygates	2.78	0.02
19	Michcon	2.81	0.01
20	Iroquois (into)	2.29	(0.31)

ID	DAILY INDEX	PRICE	CHANGE
21	REX E-ANR	2.78	0.02
22	Leidy-Transco	1.83	0.05
23	Henry	2.92	0.02
24	Transco-85	2.87	0.02
25	Sonat-ZO South	2.85	0.01
26	FGT-Z3	2.89	0.03
27	Dominion-South	1.86	0.03
28	Transco-Z6 (non-NY)	2.69	0.00
29	Transco-Z6 (NY)	2.21	0.10
30	Iroquois-Z2	2.23	(0.45)

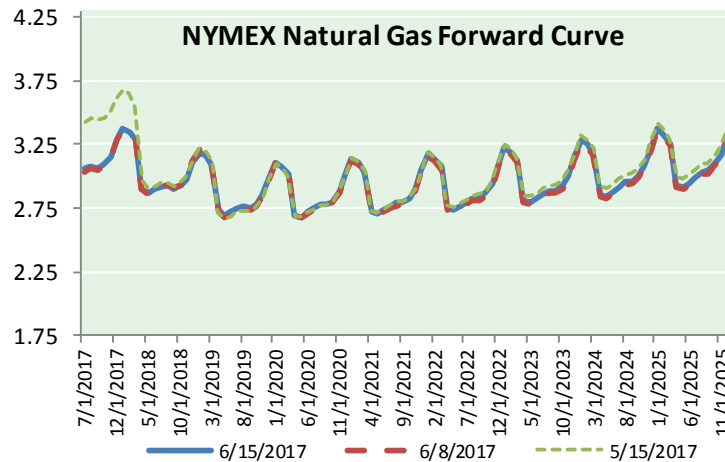
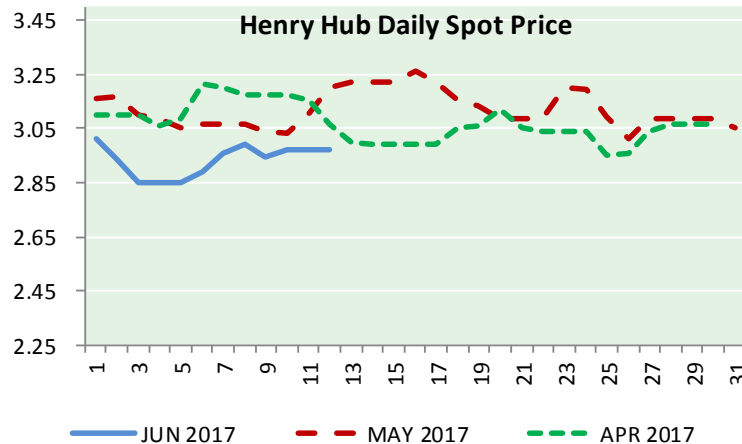
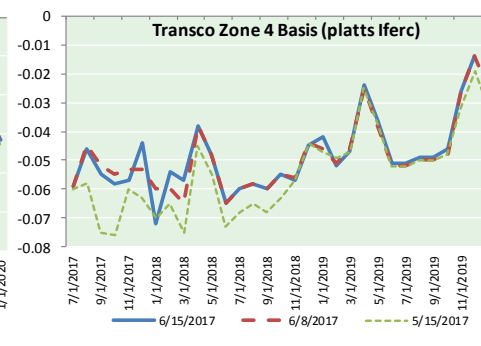
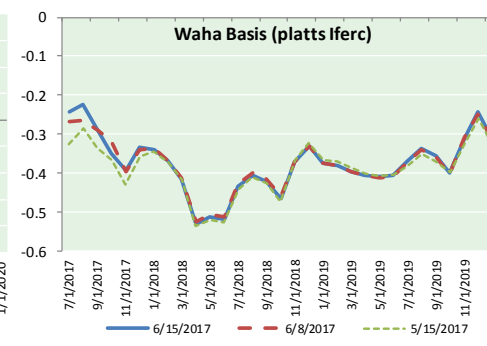
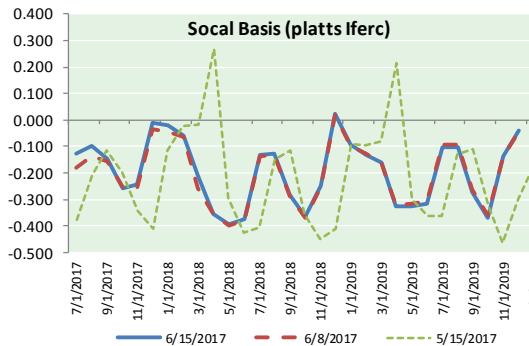
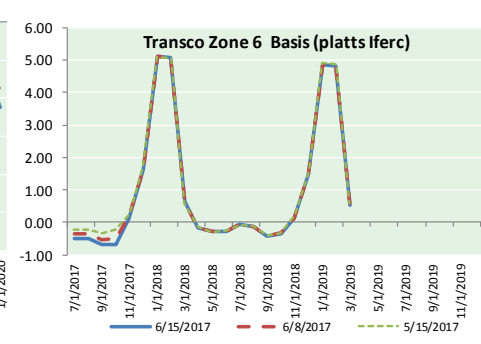
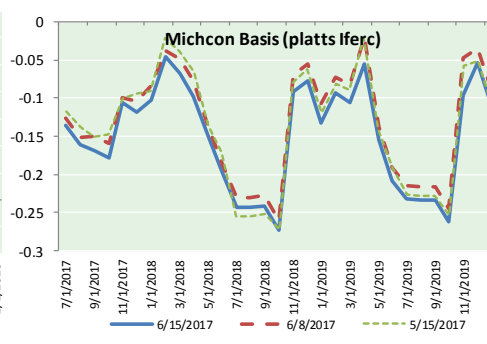
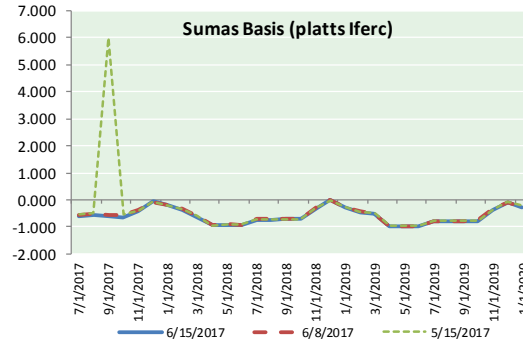
DISCLAIMER: The content herein is privileged and confidential. Content is presented for informational purposes and is a reflection of the market opinions of its authors subject to change without notice. Content is derived from sources believed to be accurate at the time of release but carries no guarantee of accuracy or completeness. Mansfield Energy Corp and its clients may or may not take positions similar or opposite those discussed herein. The reader should realize that the trading of commodities involves risk, and the reader assumes all responsibility for the risk of financial losses.





NATURAL GAS NEWS

NATURAL GAS BASIS FUTURES, HENRY HUB SPOT PRICES, AND FORWARD CURVE



CME NG Option Prices

ATM Call

Month	Strike	Close	Imp Vol
Jul-17	3.050	0.087	37.5
Aug-17	3.100	0.144	37.5
Sep-17	3.050	0.194	33.7
Oct-17	3.100	0.216	33.7
Nov-17	3.100	0.283	33.7
Dec-17			
Jan-18			
Feb-18			
Mar-18			
Apr-18			
May-18			
Jun-18			
Jul-18			
Aug-18			
Sep-18			
Oct-18			
Nov-18			

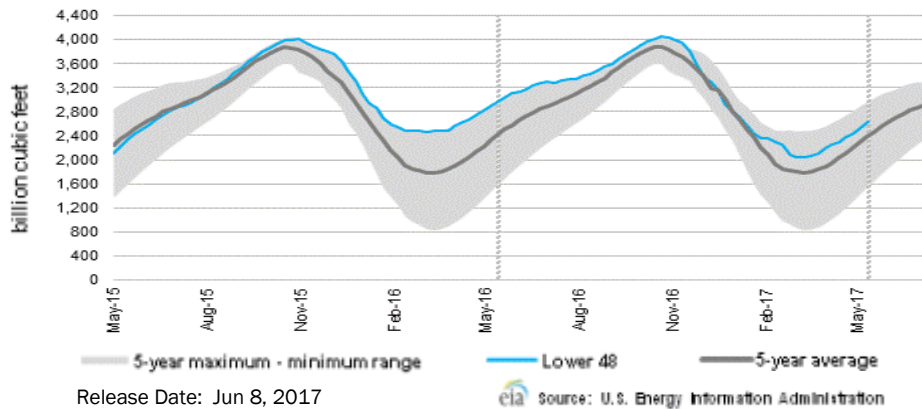
CME NG Option Prices

ATM Put

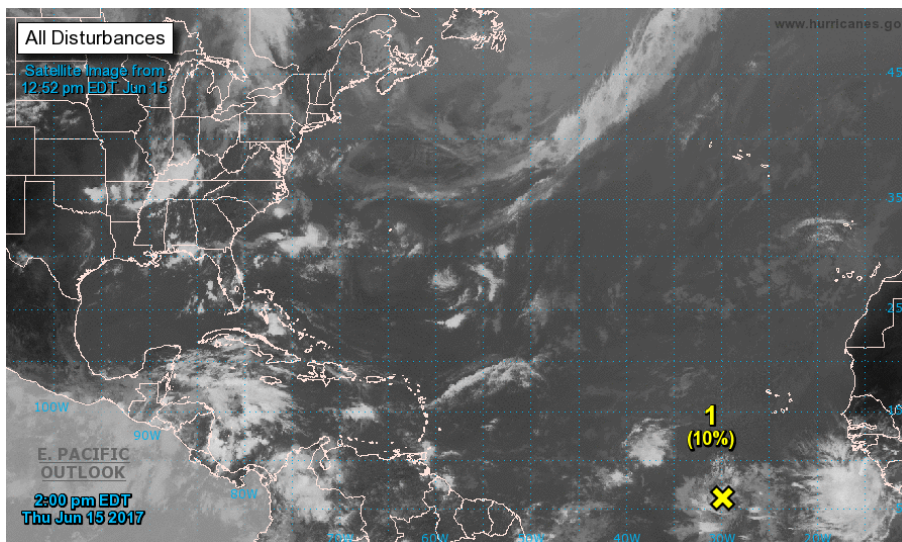
Month	Strike	Close	Imp Vol
Jul-17	3.050	0.082	41.2
Aug-17	3.100	0.164	37.5
Sep-17	3.050	0.187	35.6
Oct-17	3.100	0.228	33.7
Nov-17	3.100		
Dec-17			
Jan-18			
Feb-18			
Mar-18			
Apr-18			
May-18			
Jun-18			
Jul-18			
Aug-18			
Sep-18			
Oct-18			
Nov-18			

NATURAL GAS NEWS

WEEKLY GAS IN UNDERGROUND STORAGE WITH 5-YR RANGE



TROPICAL STORM ACTIVITY— ATLANTIC



For the North Atlantic...Caribbean Sea and the Gulf of Mexico:

1. A tropical wave located several hundred miles south-southwest of the Cabo Verde Islands is producing disorganized showers and thunderstorms. Development, if any, of this system should be slow to occur during the next few days while the wave moves westward near 20 mph over the tropical Atlantic.

* Formation chance through 48 hours...low...10 percent.

* Formation chance through 5 days...low...20 percent.

2. A broad area of low pressure is expected to form over the northwestern Caribbean Sea and the Yucatan peninsula this weekend. Conditions appear to be favorable for gradual development of this system while it moves slowly northwestward toward the southern Gulf of Mexico early next week.

* Formation chance through 48 hours...low...near 0 percent.

* Formation chance through 5 days...medium...50 percent.

Forecaster Cangialosi

Rig Count

Report Date: June 9, 2017

	Total	Change
US -	927	+11
CN -	132	+33

EIA Weekly NG Storage Actual and Surveys for June 9, 2017

Released June 15, 2017

PIRA — +85
 ARM — +81
 Reuters — +86

EIA ACTUAL — +106

Total Working Gas In Storage

2,709 BCF

+78 BCF (LAST WEEK)
 (332) BCF (LAST YEAR)
 +228 BCF (5-YR AVG)

U.S. Natural Gas Supply Gas Week 6/8 - 6/14

Average daily values (BCF/D):

Last Year (BCF/d)

Dry Production — +71.2

Total Supply — +77.4

Last Week (BCF/d)

Dry Production — +71.9

Total Supply — +77.4

[NEXT REPORT ON JUN 15]

U.S. Natural Gas Demand Gas Week 6/8 - 6/14

Average daily values (BCF/D):

Last Year (BCF/d)

Power — +31.1

Total Demand — +69.4

Last Week (BCF/d)

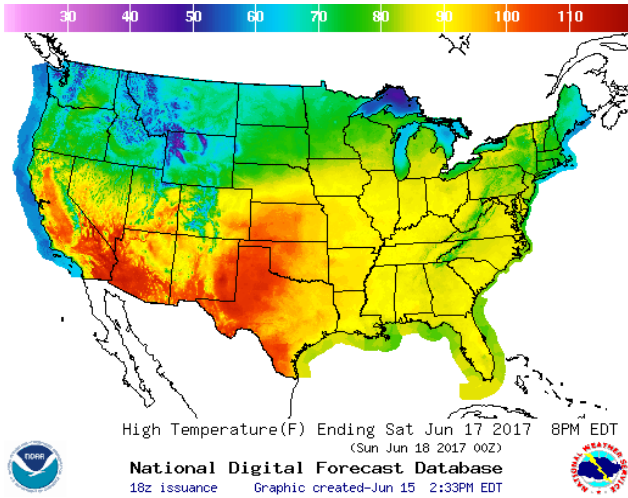
Power — +26.5

Total Demand — +66.1

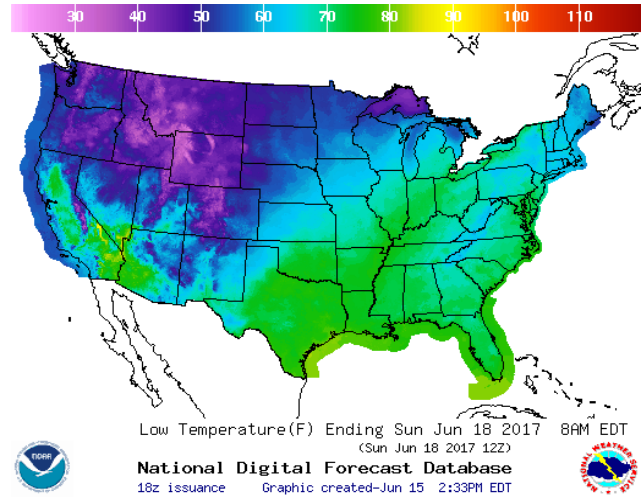
[NEXT REPORT ON JUN 22]

WEATHER – HIGH / LOW TEMPERATURE SATURDAY

HIGH Temperature

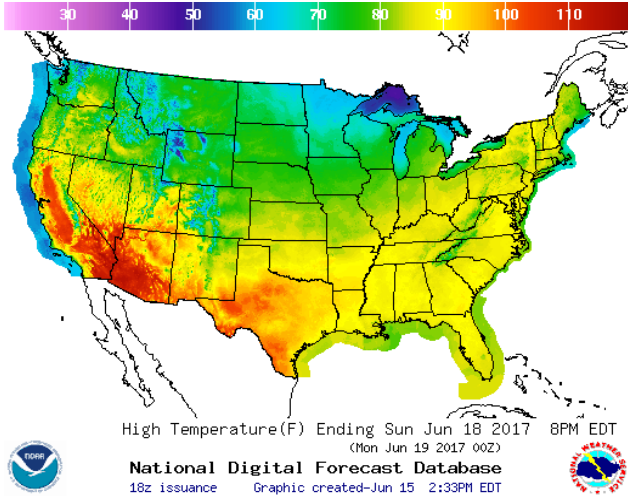


LOW Temperature

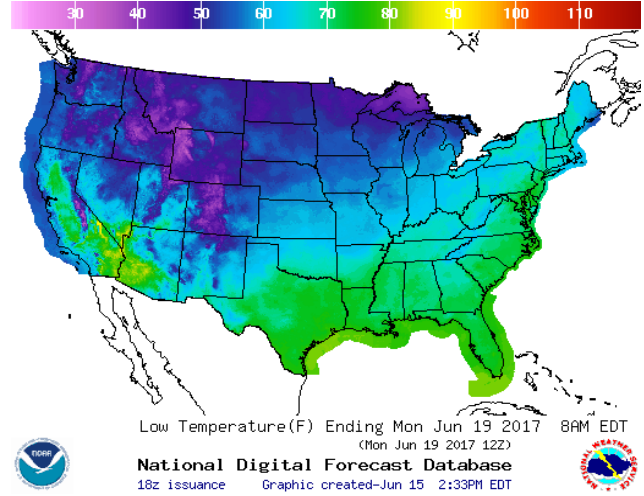


WEATHER – HIGH / LOW TEMPERATURE SUNDAY

HIGH Temperature

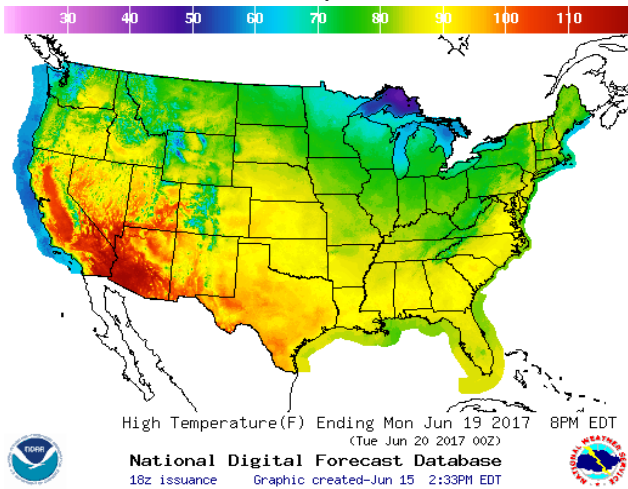


LOW Temperature

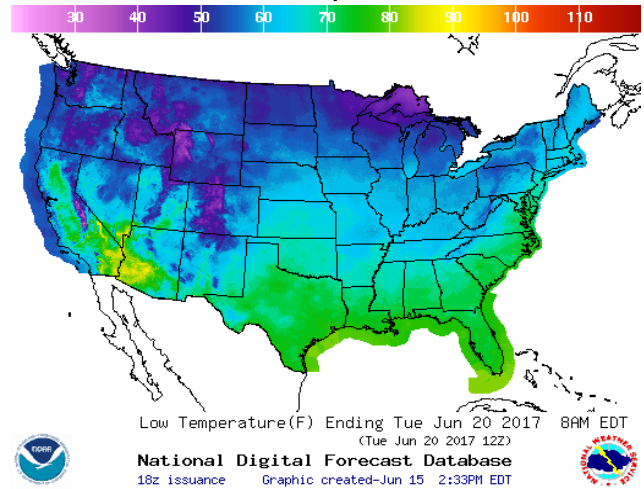


WEATHER – HIGH / LOW TEMPERATURE MONDAY

HIGH Temperature

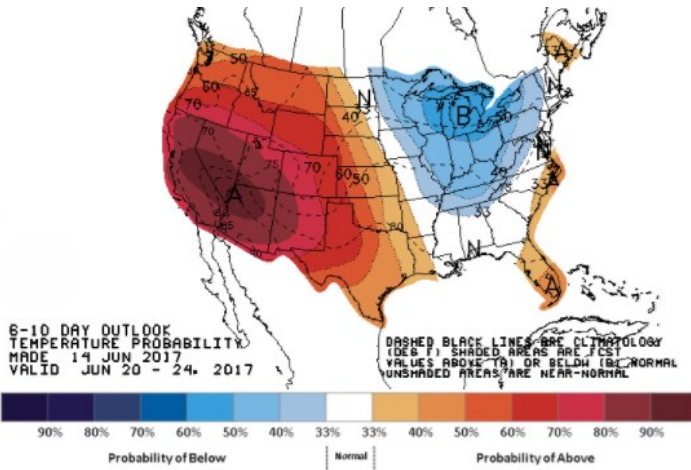


LOW Temperature

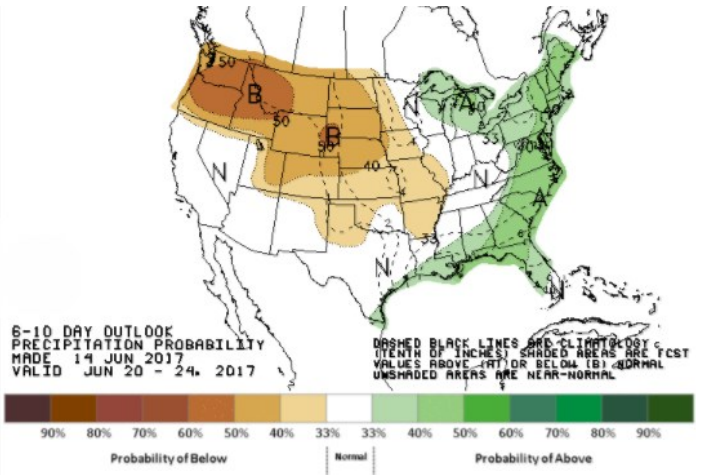


NATURAL GAS NEWS

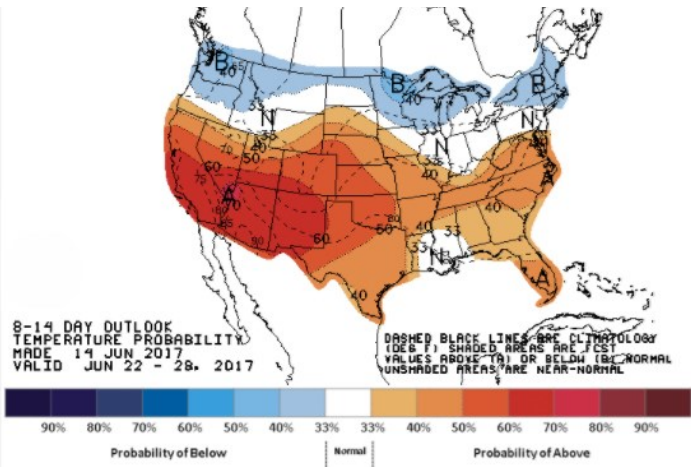
WEATHER — 6 TO 10 DAY OUTLOOK — NOAA Temperature



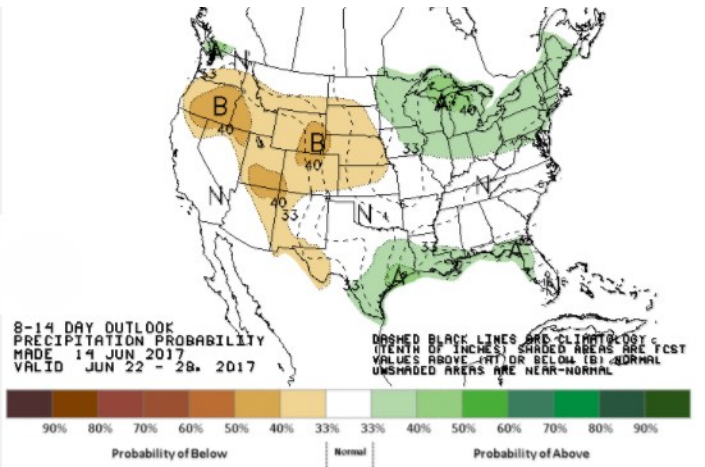
Precipitation



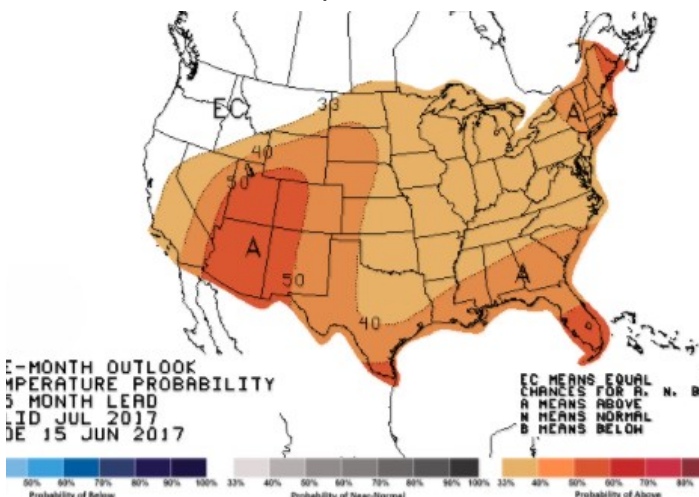
WEATHER — 8 TO 14 DAY OUTLOOK — NOAA Temperature



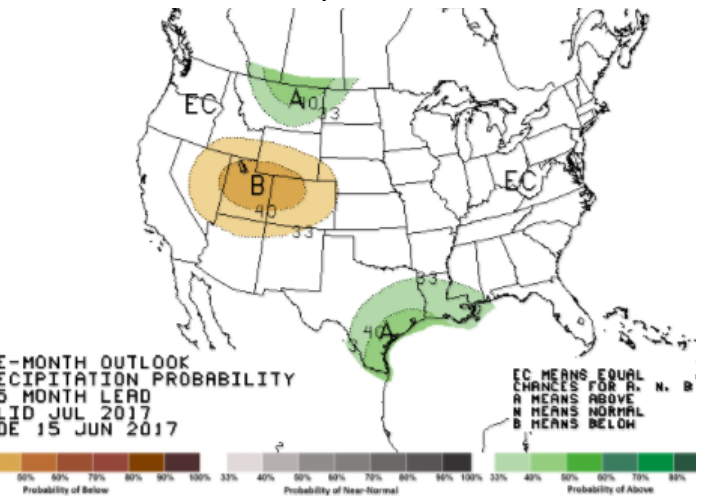
Precipitation



WEATHER — 30 DAY OUTLOOK — NOAA Temperature

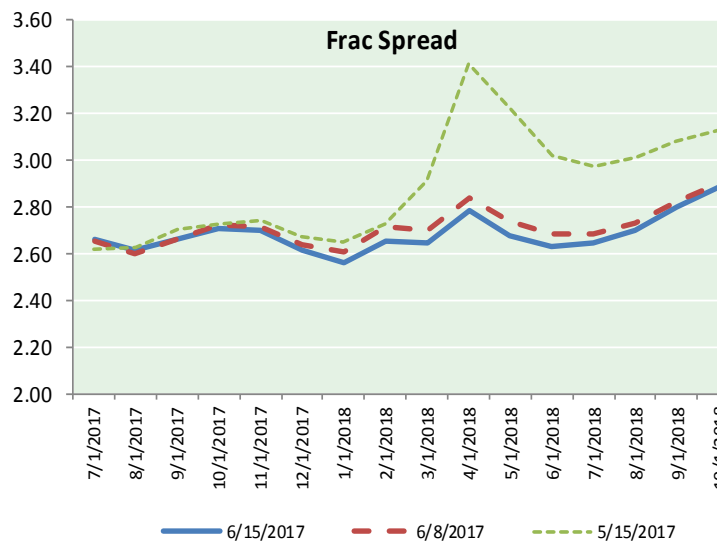
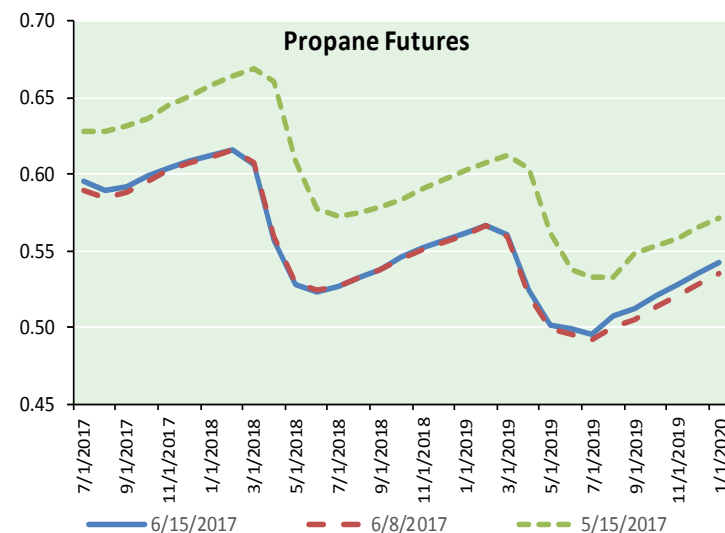
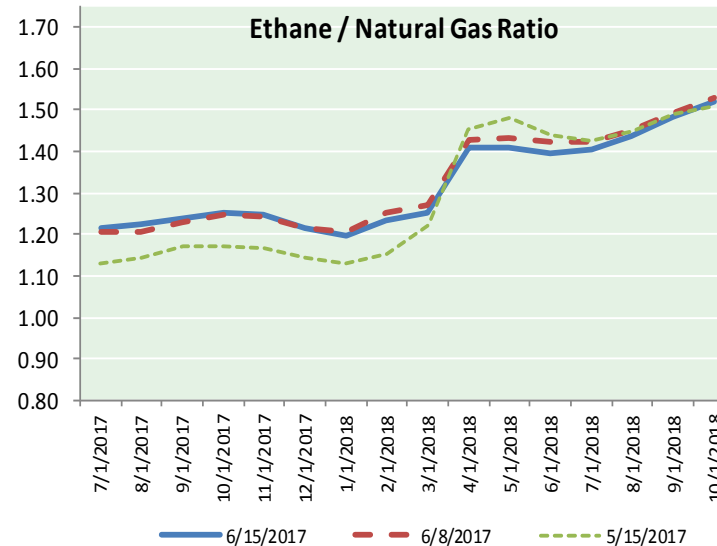
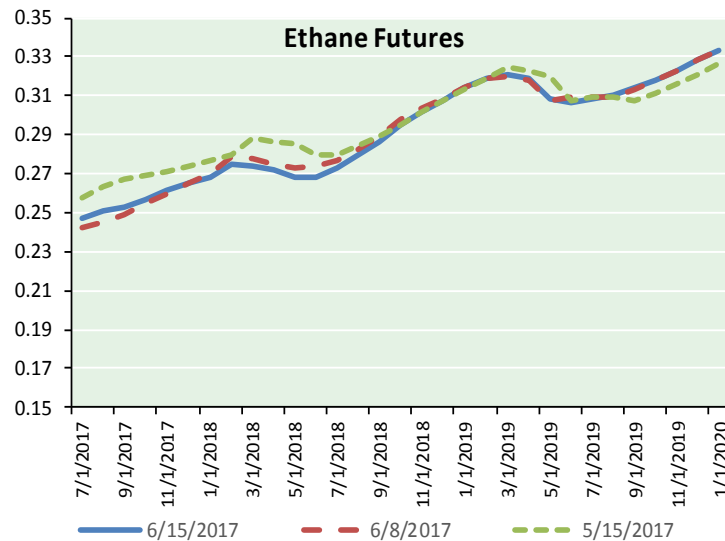


Precipitation





ETHANE FUTURES, NG/ETHANE RATIO, PROPANE FUTURES, AND THE FRAC SPREAD



CME Future Prices

Ethane (C2)

Non-LDH— Mont Belvieu

Month	Close	Change
Jul-17	0.247	0.001
Aug-17	0.251	0.001
Sep-17	0.253	0.001
Oct-17	0.257	0.001
Nov-17	0.261	0.001
Dec-17	0.265	0.001
Jan-18	0.268	(0.000)
Feb-18	0.275	0.000
Mar-18	0.274	0.000
Apr-18	0.272	0.001
May-18	0.268	0.000
Jun-18	0.268	0.001

1YR Strip 0.263 0.001

CME Future Prices

Propane (C3)

Non-LDH— Mont Belvieu

Month	Close	Change
Jul-17	0.596	(0.002)
Aug-17	0.590	(0.005)
Sep-17	0.593	(0.005)
Oct-17	0.599	(0.004)
Nov-17	0.604	(0.004)
Dec-17	0.609	(0.004)
Jan-18	0.613	(0.004)
Feb-18	0.616	(0.004)
Mar-18	0.606	(0.004)
Apr-18	0.558	(0.003)
May-18	0.528	(0.001)
Jun-18	0.524	(0.001)

1YR Strip 0.586 (0.004)

NATURAL GAS NEWS



Prompt WTI (CL) Crude
Daily Sentiment
BEARISH



RESISTANCE
 44.77 & 45.09
 SUPPORT
 44.18 & 43.91

FOLLOW US ON TWITTER:



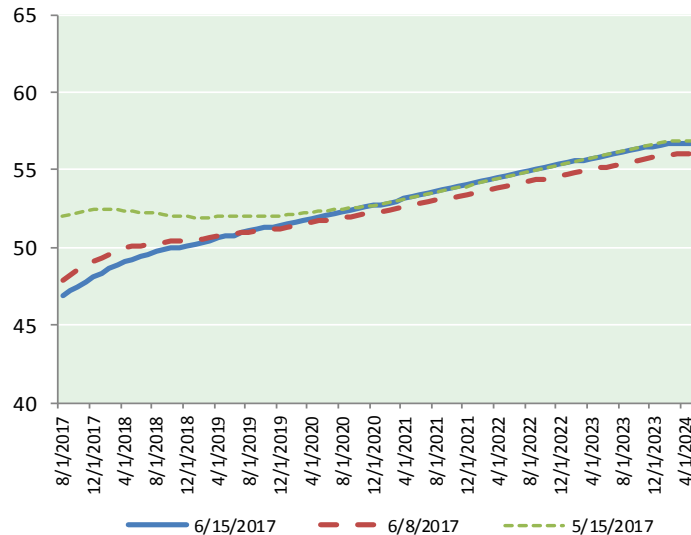
@MPG_NatGasNews

NYMEX Brent (BZ)

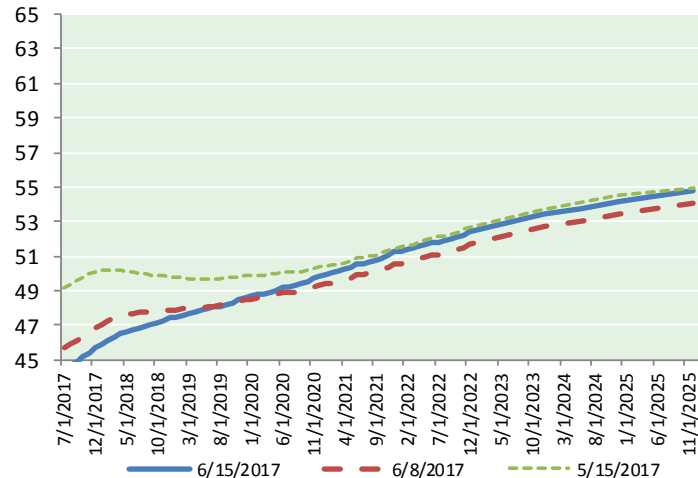
Futures

Month	Close	Change
Aug-17	46.92	(0.08)
Sep-17	47.19	(0.10)
Oct-17	47.49	(0.12)
Nov-17	47.79	(0.12)
Dec-17	48.10	(0.10)
Jan-18	48.38	(0.07)
Feb-18	48.64	(0.03)
Mar-18	48.87	0.00
Apr-18	49.07	0.03
May-18	49.25	0.08
Jun-18	49.41	0.12
Jul-18	49.58	0.16
Aug-18	49.73	0.19
Sep-18	49.84	0.22
Oct-18	49.93	0.24
Nov-18	50.02	0.26
Dec-18	50.11	0.27
Jan-19	50.21	0.29
Feb-19	50.32	0.30
Mar-19	50.45	0.31
Apr-19	50.61	0.34
May-19	50.71	0.36
Jun-19	50.79	0.38
Jul-19	50.93	0.40
1YR Strip 2017	48.39	(0.02)
5YR Strip	51.56	0.39

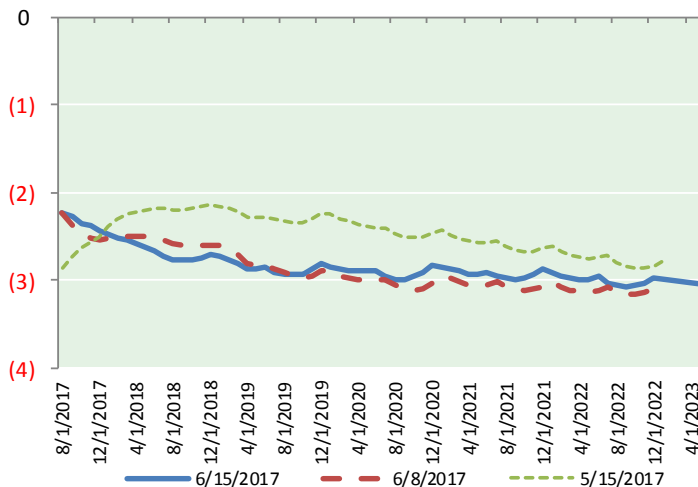
BRENT CRUDE FORWARD CURVE



WTI CRUDE FORWARD CURVE



WTI-BRENT SPREAD



FRAC Spread

Specifications

Ethane : 42%	66,500 btu/g
Propane: 28%	90,830 btu/g
Butane: 11%	102,916 btu/g
Iso-Butane: 6%	98,935 btu/g
Natural Gasoline: 13%	115,021 btu/g

Prompt NGL Futures

(\$/gallon)

	Jul-17	Close	Change
Butane	0.708	(0.005)	
Iso-Butane	0.707	(0.003)	
Nat Gasoline	1.004	(0.002)	

NYMEX WTI (CL) Futures

Month	Close	Change
Jul-17	44.46	(0.27)
Aug-17	44.68	(0.25)
Sep-17	44.91	(0.23)
Oct-17	45.14	(0.20)
Nov-17	45.41	(0.17)
Dec-17	45.67	(0.15)
Jan-18	45.91	(0.14)
Feb-18	46.13	(0.11)
Mar-18	46.32	(0.09)
Apr-18	46.48	(0.06)
May-18	46.62	(0.02)
Jun-18	46.75	0.01
Jul-18	46.86	0.04
Aug-18	46.97	0.07
Sep-18	47.07	0.10
Oct-18	47.17	0.13
Nov-18	47.28	0.16
Dec-18	47.40	0.19
Jan-19	47.48	0.22
Feb-19	47.56	0.24
Mar-19	47.64	0.26
Apr-19	47.74	0.28
May-19	47.84	0.30
Jun-19	47.95	0.33
1YR Strip 2017	45.71	(0.14)
5YR Strip	48.61	0.38