

NATURAL GAS



NEWS

JUNE 11, 2018

Prior Day's NYMEX Jul-18 Contract (CT)



NYMEX NG Futures

Month	Close	Change
Jul-18	2.890	(0.040)
Aug-18	2.894	(0.045)
Sep-18	2.876	(0.048)
Oct-18	2.890	(0.045)
Nov-18	2.937	(0.041)
Dec-18	3.047	(0.037)
Jan-19	3.133	(0.036)
Feb-19	3.102	(0.034)
Mar-19	3.004	(0.030)
Apr-19	2.637	(0.017)
May-19	2.595	(0.016)
Jun-19	2.622	(0.016)
Jul-19	2.653	(0.015)
Aug-19	2.662	(0.014)
Sep-19	2.649	(0.014)
Oct-19	2.669	(0.014)
Nov-19	2.721	(0.014)
Dec-19	2.850	(0.012)
Jan-20	2.947	(0.012)
Feb-20	2.911	(0.013)
Mar-20	2.816	(0.013)
Apr-20	2.546	(0.009)
May-20	2.520	(0.009)
Jun-20	2.550	(0.009)
1YR Strip	2.886	(0.034)
2018	2.922	(0.043)
5YR Strip	2.715	(0.009)

IN THE NEWS

Gas plant proposal fuels fight in small Michigan town— The Detroit News reported: In this rural town where residents enjoy life at a comfortable pace along a scenic river, Bill Dibble has a visceral reaction to a proposed natural gas-fired power plant. This community of 3,700 people has long driveways, expansive manicured lawns, and two coal-fired power plants. So the idea that

- Gas plant proposal fuels fight in small Michigan town
- In California, natural gas availability still an issue 3 years after major leak

DTE Energy would invest in another plant that emits pollution roiled Dibble, even though the utility plans to shutter one existing facility. The \$1 billion Blue Water Energy Center would "not be a good thing," he said. Wind turbines and solar panels would be ideal and safer, he said. "Gas isn't for me," said the 74-year-old Dibble on a recent sun-soaked day from his front porch, a mile and a half from where DTE Energy's new plant would be. "I'm not for any kind of exhaust." Residents here have differing views about the new facility that is expected to be completed by 2022. It was green-lighted in late April by the Michigan Public Service Commission despite opposition from a phalanx of environmental groups, which have appealed the decision to the Michigan Court of Appeals. For more on this story visit detroitnews.com or click <https://detne.ws/2JwU6C2>

In California, natural gas availability still an issue 3 years after major leak— Ars Technica reported: In 2015, one of 115 natural gas storage wells at the Aliso Canyon storage facility in Southern California started leaking methane, an extremely potent greenhouse gas. The leak took months to seal, becoming the second largest methane leak in US history but likely the most environmentally damaging methane leak in US history due to the fact that none of the methane combusted before being released to the atmosphere. After the well at Aliso Canyon was sealed, the state of California prohibited Southern California Gas (SoCalGas) from filling the storage facility, a series of underground caverns made of depleted former oil wells, to capacity. For more on this story visit arstechnica.com or click <https://bit.ly/2JE6bVZ>

12 MONTH CANDLESTICK (WEEKLY)



Prompt Natural Gas (NG) Daily Sentiment

BULLISH



RESISTANCE

2.93 & 2.96

SUPPORT

2.87 & 2.84

Trading Summary

NATURAL GAS

Futures	Close	Change
NG	2.890	(0.040)
Volume	603,184	(136,107)
Open Int.	1,557,377	(11,429)

CRUDE AND GASOLINE

Futures	Close	Change
Crude	65.74	(0.21)
RBOB	2.1153	0.0005
Crude/NG	22.75	0.24

METALS

Futures	Close	Change
Gold	1,298.10	(2.90)

EQUITIES

Exchange	Close	Change
DOW	25,316.53	75.12
S&P 500	-1,383.77	8.66

CURRENCY

Currency	Close	Change
EUR/USD	1.1788	0.0013
USD/CND	1.2405	0.0077

Contact Us



Mansfield Energy Corp
1025 Airport Pkwy
Gainesville, GA 30501

www.mansfield.energy

info@mansfieldoil.com

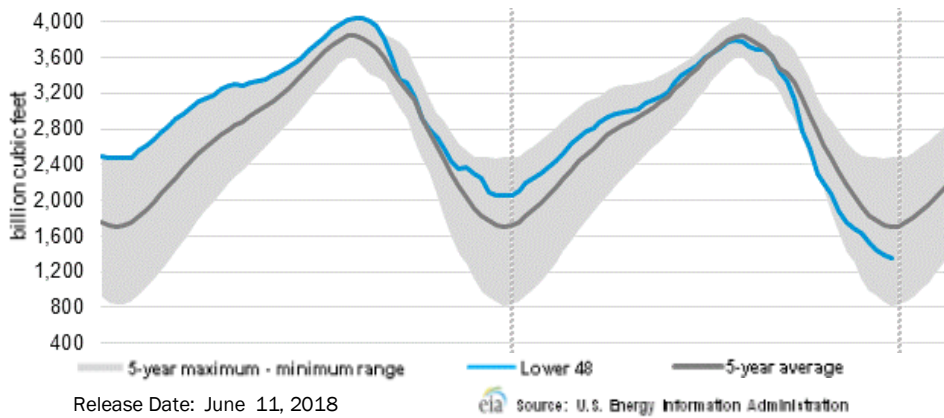
Phone: (800) 695-6626





NATURAL GAS NEWS

WEEKLY GAS IN UNDERGROUND STORAGE WITH 5-YR RANGE



Rig Count

Report Date: June 8, 2018

	Total	Change
US -	1062	+2
CN -	112	+13

EIA Weekly NG Storage Actual and Surveys for June 8, 2018

Released June 7, 2018

Range (80) to (94)

PIRA — (94)

Citi Futures — (85)

Reuters — (90)

EIA ACTUAL — 92

Total Working Gas In Storage

1,817 BCF

92 BCF (LAST WEEK)
 (799) BCF (LAST YEAR)
 (512) BCF (5-YR AVG)

U.S. Natural Gas Supply Gas Week 5/31— 6/6

Average daily values (BCF/D):

Last Year (BCF/d)

Dry Production — +72.5

Total Supply — +78.1

Last Week (BCF/d)

Dry Production — +80.1

Total Supply — +86.6

[NEXT REPORT ON Jun 15]

U.S. Natural Gas Demand Gas Week 5/31— 6/6

Average daily values (BCF/D):

Last Year (BCF/d)

Power — +26.1

Total Demand — +66.1

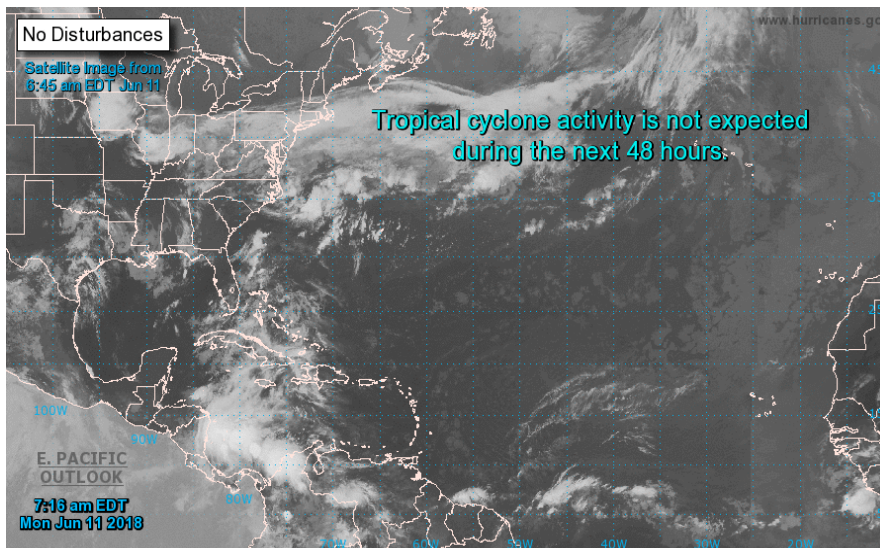
Last Week (BCF/d)

Power — +29.9

Total Demand — +70.2

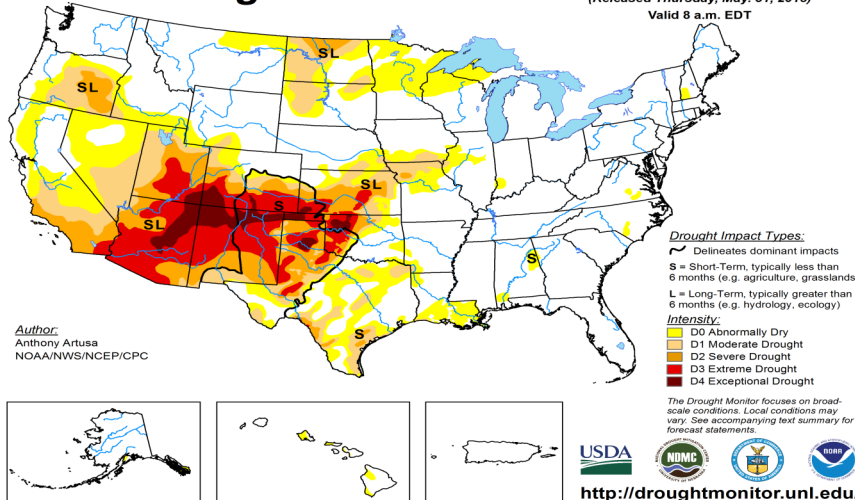
[NEXT REPORT ON Jun 8]

TROPICAL STORM ACTIVITY— ATLANTIC



U.S. Drought Monitor

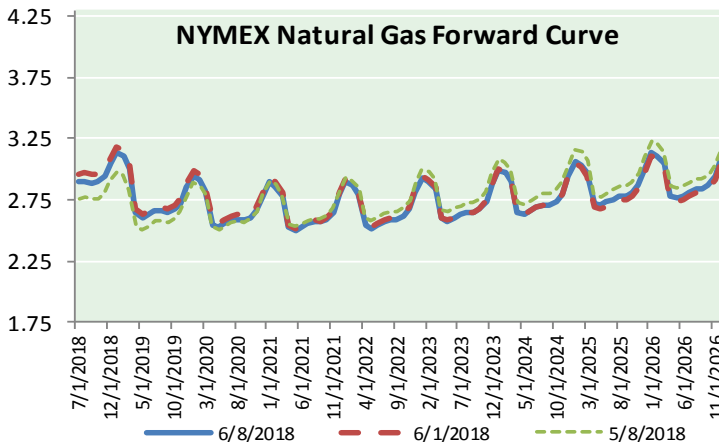
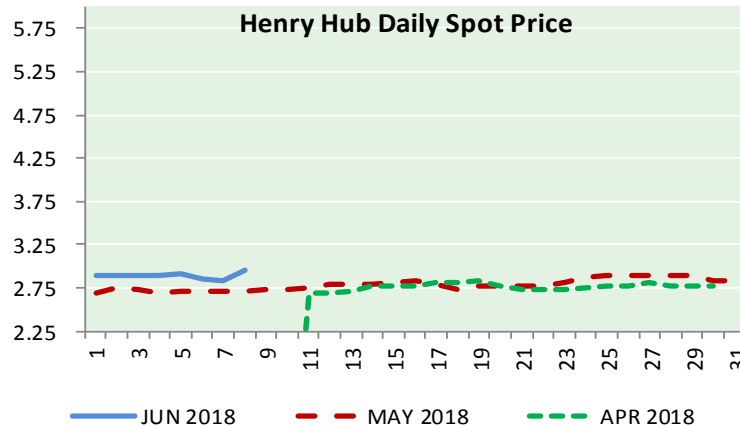
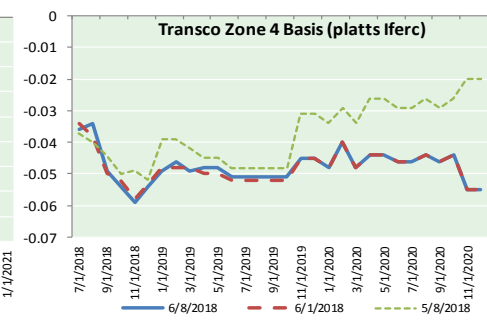
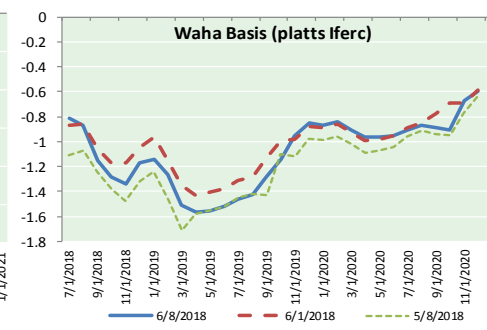
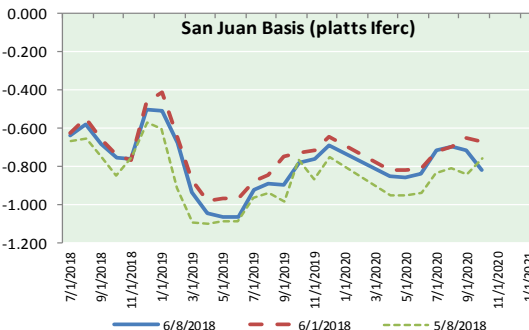
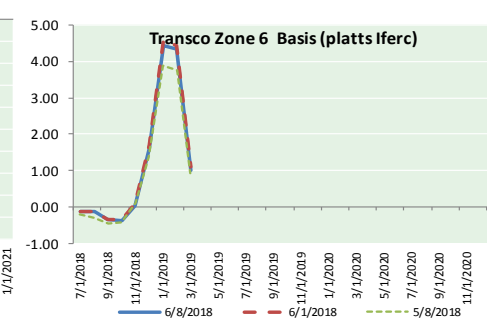
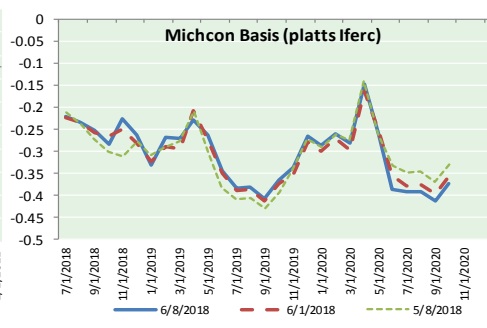
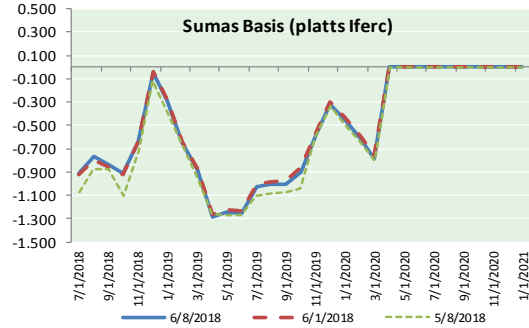
May 29, 2018
 (Released Thursday, May 31, 2018)
 Valid 8 a.m. EDT





NATURAL GAS NEWS

NATURAL GAS BASIS FUTURES, HENRY HUB SPOT PRICES, AND FORWARD CURVE



NYMEX WTI Delivery

Month Average (\$/bbl)

(Excluding Weekends and Holidays)

Month: June 2018

Day	Price	Day	Price
1	65.81	16	
2		17	
3		18	
4	64.75	19	
5	65.52	20	
6	64.73	21	
7	65.95	22	
8	65.74	23	
9		24	
10		25	
11		26	
12		27	
13		28	
14		29	
15		30	

Average (Jun) 65.4167
(through 06/08/2018)

Average (May) 69.9832

Average (Apr) 66.3252

CME NG Option Prices

ATM Call

Month	Strike	Close	Imp Vol
Aug-18			
Sep-18	2.950	0.071	16.9
Oct-18			
Nov-18			
Dec-18			

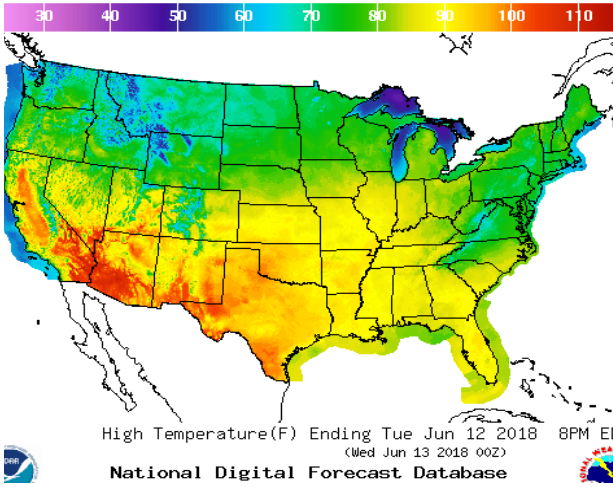
CME NG Option Prices

ATM Put

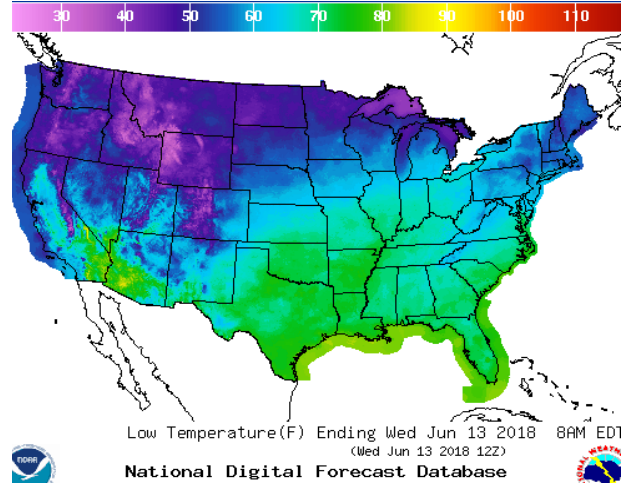
Month	Strike	Close	Imp Vol
Aug-18			
Sep-18	2.950	0.093	22.5
Oct-18			
Nov-18			
Dec-18			

WEATHER – HIGH / LOW TEMPERATURE TOMORROW

HIGH Temperature

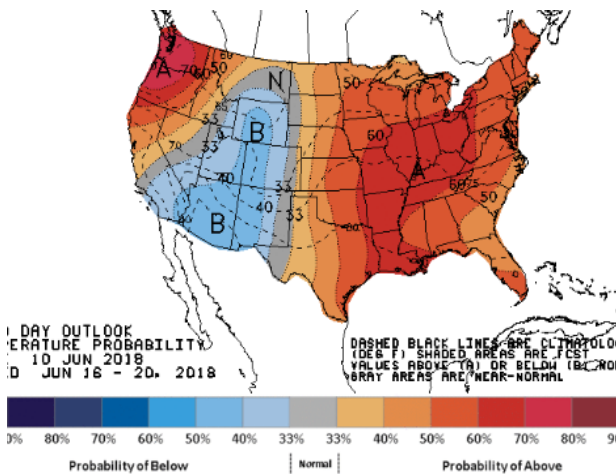


LOW Temperature

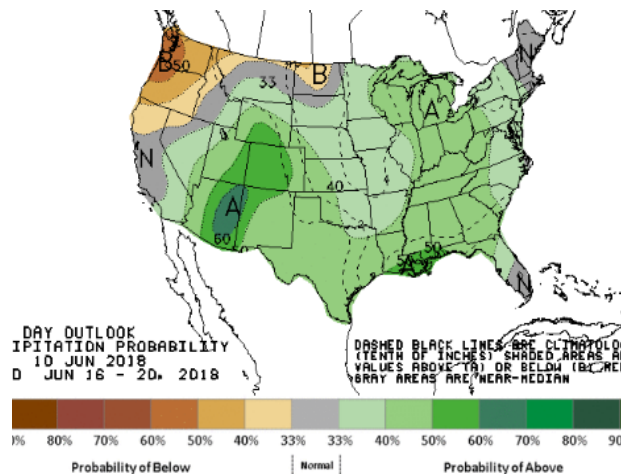


WEATHER – 6 TO 10 DAY OUTLOOK – NOAA

Temperature

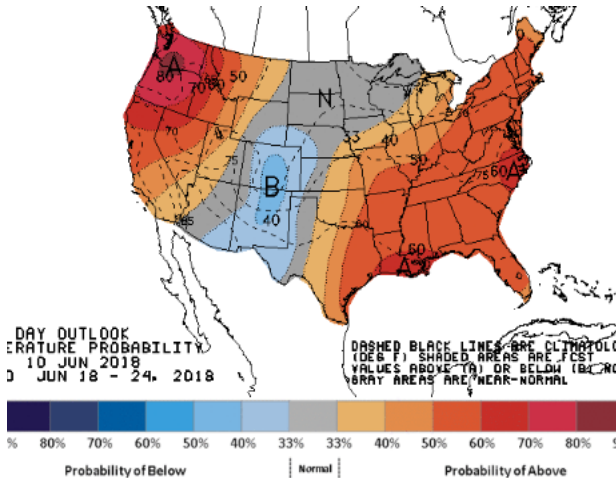


Precipitation

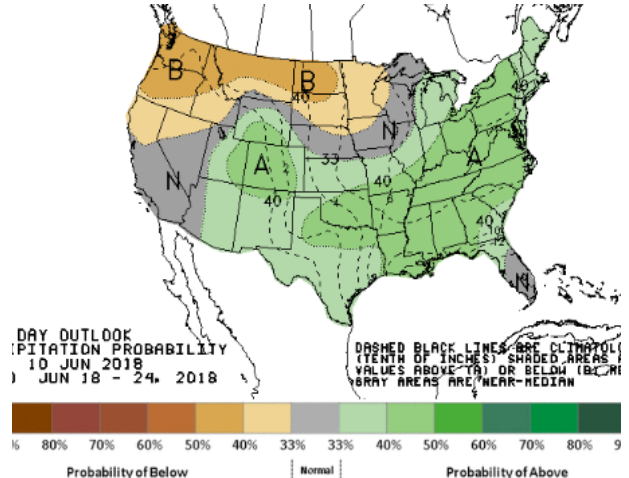


WEATHER – 8 TO 14 DAY OUTLOOK – NOAA

Temperature



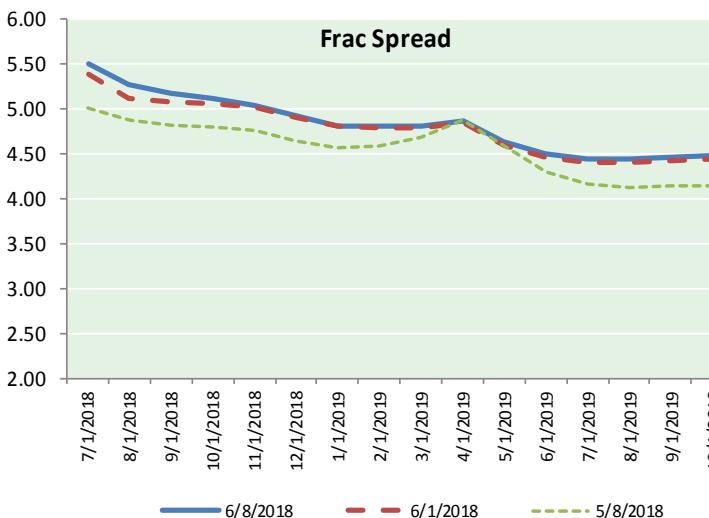
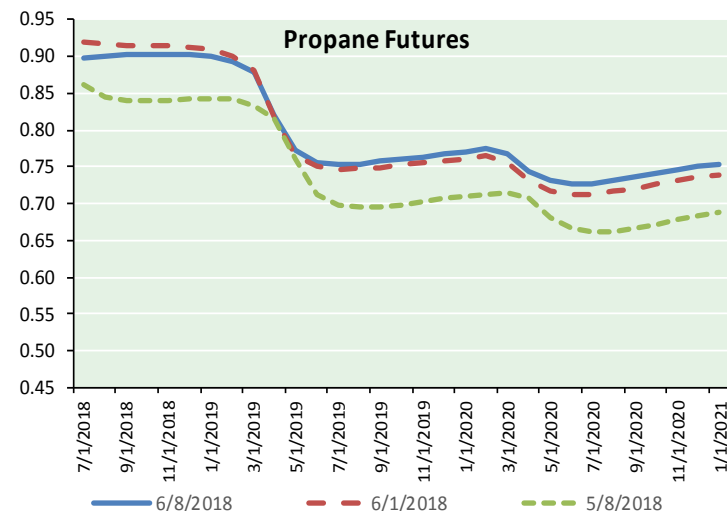
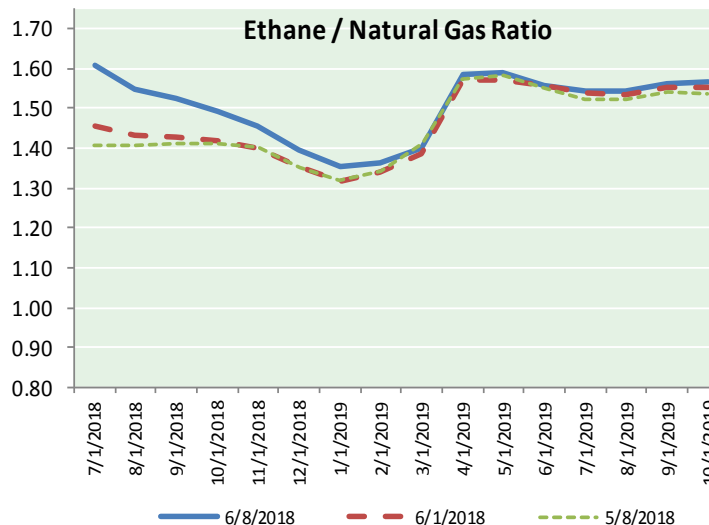
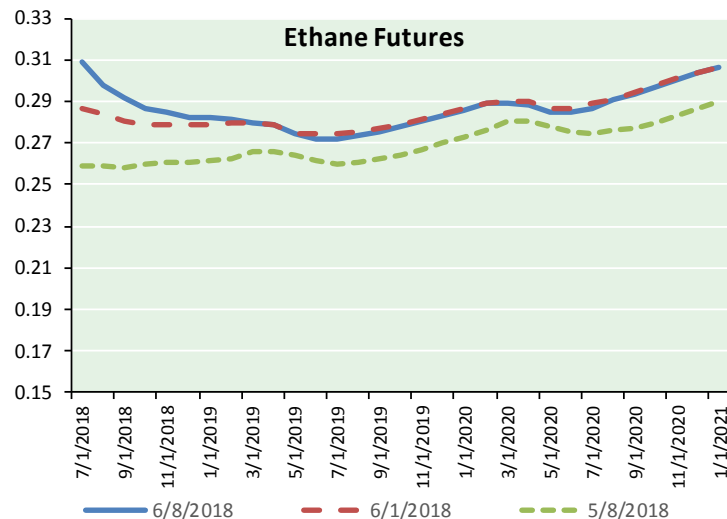
Precipitation





NATURAL GAS NEWS

ETHANE FUTURES, NG/ETHANE RATIO, PROPANE FUTURES, AND THE FRAC SPREAD



CME Future Prices

Ethane (C2)

Non-LDH— Mont Belvieu

Month	Close	Change
Jul-18	0.309	(0.005)
Aug-18	0.298	(0.005)
Sep-18	0.292	(0.006)
Oct-18	0.287	(0.005)
Nov-18	0.284	(0.004)
Dec-18	0.283	(0.004)
Jan-19	0.282	(0.003)
Feb-19	0.281	(0.003)
Mar-19	0.280	(0.002)
Apr-19	0.278	(0.002)
May-19	0.274	(0.002)
Jun-19	0.272	(0.002)

1YR Strip 0.285 (0.004)

CME Future Prices

Propane (C3)

Non-LDH— Mont Belvieu

Month	Close	Change
Jul-18	0.898	0.009
Aug-18	0.900	0.012
Sep-18	0.902	0.012
Oct-18	0.902	0.009
Nov-18	0.902	0.008
Dec-18	0.902	0.008
Jan-19	0.901	0.007
Feb-19	0.894	0.006
Mar-19	0.879	0.005
Apr-19	0.821	0.004
May-19	0.772	0.002
Jun-19	0.756	0.002

1YR Strip 0.869 0.007

NATURAL GAS NEWS



Prompt WTI (CL) Crude Daily Sentiment

BEARISH



RESISTANCE

66.27 & 66.80

SUPPORT

65.18 & 64.62

FOLLOW US ON TWITTER:



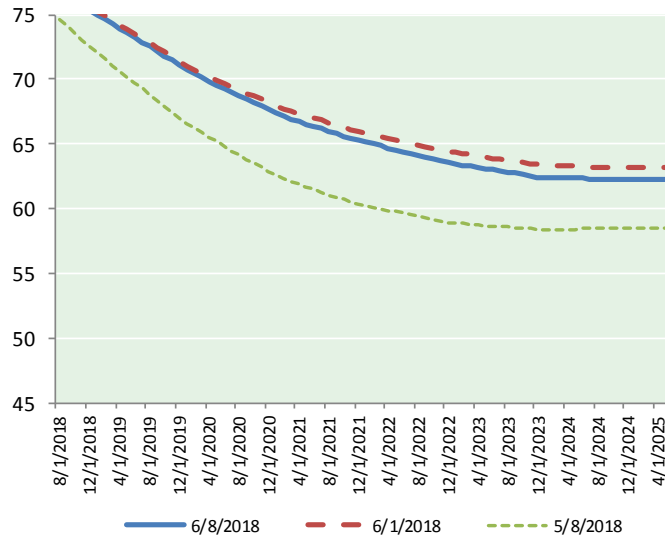
@MPG_NatGasNews

NYMEX Brent (BZ)

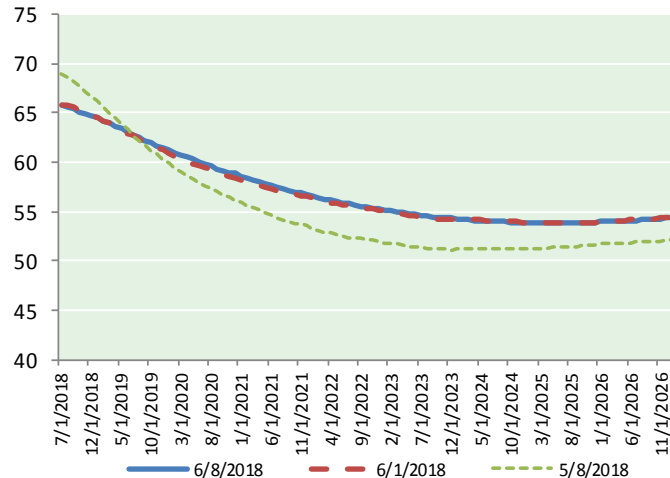
Futures

Month	Close	Change
Aug-18	76.46	(0.86)
Sep-18	76.19	(0.79)
Oct-18	75.86	(0.74)
Nov-18	75.58	(0.70)
Dec-18	75.30	(0.66)
Jan-19	74.98	(0.63)
Feb-19	74.64	(0.59)
Mar-19	74.30	(0.54)
Apr-19	73.95	(0.50)
May-19	73.58	(0.46)
Jun-19	73.20	(0.41)
Jul-19	72.86	(0.38)
Aug-19	72.52	(0.35)
Sep-19	72.16	(0.32)
Oct-19	71.81	(0.32)
Nov-19	71.47	(0.30)
Dec-19	71.08	(0.28)
Jan-20	70.74	(0.28)
Feb-20	70.45	(0.26)
Mar-20	70.15	(0.25)
Apr-20	69.84	(0.24)
May-20	69.57	(0.22)
Jun-20	69.29	(0.20)
Jul-20	68.99	(0.19)
1YR Strip 2018	74.74	(0.61)
2018	75.88	(0.75)
5YR Strip	68.12	(0.21)

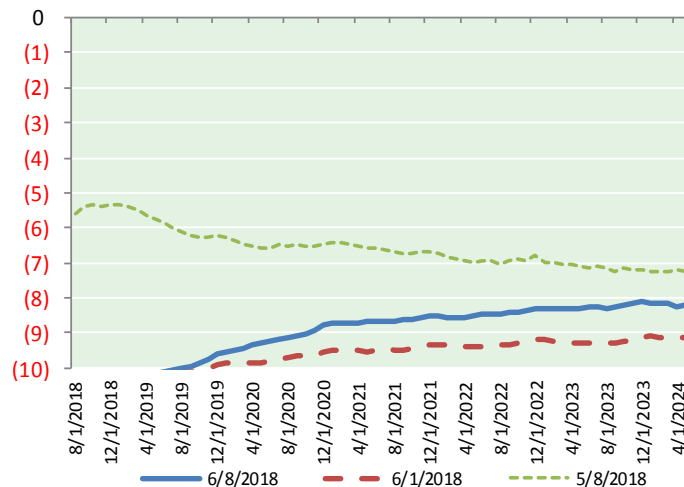
BRENT CRUDE FORWARD CURVE



WTI CRUDE FORWARD CURVE



WTI-BRENT SPREAD



FRAC Spread

Specifications

Ethane	: 42%	66,500 btu/g
Propane	: 28%	90,830 btu/g
Butane	: 11%	102,916 btu/g
Iso-Butane	: 6%	98,935 btu/g
Natural Gasoline	: 13%	115,021 btu/g

Prompt NGL Futures

(\$/gallon)

	Jul-18	Close	Change
Butane	1.046	0.004	
Iso-Butane	1.365	(0.015)	
Nat Gasoline	1.520	(0.004)	

NYMEX WTI (CL) Futures

Month	Close	Change
Jul-18	65.74	(0.21)
Aug-18	65.67	(0.22)
Sep-18	65.40	(0.23)
Oct-18	65.06	(0.24)
Nov-18	64.91	(0.23)
Dec-18	64.73	(0.22)
Jan-19	64.52	(0.21)
Feb-19	64.25	(0.19)
Mar-19	63.97	(0.17)
Apr-19	63.68	(0.14)
May-19	63.39	(0.11)
Jun-19	63.09	(0.09)
Jul-19	62.79	(0.07)
Aug-19	62.49	(0.04)
Sep-19	62.21	(0.01)
Oct-19	61.97	0.02
Nov-19	61.72	0.04
Dec-19	61.49	0.04
Jan-20	61.20	0.06
Feb-20	60.93	0.08
Mar-20	60.70	0.11
Apr-20	60.47	0.12
May-20	60.28	0.15
Jun-20	60.07	0.16
1YR Strip 2018	64.53	(0.19)
2018	65.25	(0.23)
5YR Strip	59.19	0.10