

NATURAL GAS



NEWS

JUNE 7, 2017

Prior Day's NYMEX Jul-17 Contract (CT)



NYMEX NG Futures

Month	Close	Change
Jul-17	3.042	0.060
Aug-17	3.076	0.052
Sep-17	3.062	0.048
Oct-17	3.082	0.046
Nov-17	3.146	0.043
Dec-17	3.277	0.036
Jan-18	3.355	0.034
Feb-18	3.335	0.030
Mar-18	3.270	0.029
Apr-18	2.881	0.017
May-18	2.843	0.015
Jun-18	2.875	0.015
Jul-18	2.907	0.014
Aug-18	2.917	0.014
Sep-18	2.896	0.015
Oct-18	2.912	0.015
Nov-18	2.966	0.014
Dec-18	3.104	0.014
Jan-19	3.197	0.012
Feb-19	3.174	0.010
Mar-19	3.102	0.010
Apr-19	2.712	0.009
May-19	2.672	0.009
Jun-19	2.698	0.009
1YR Strip	3.104	0.035
2017	3.114	0.048
5YR Strip	2.912	0.005

IN THE NEWS

Unitil Files for an Increase in Natural Gas Distribution Rates for New Hampshire Customers — Nasdaq reports: Unitil Corporation (NYSE:UTL) announced today that its New Hampshire local natural gas distribution utility filed a rate case requesting approval to increase its natural gas distribution base rates with the New

- **Unitil Files for an Increase in Natural Gas Distribution Rates for New Hampshire Customers**
- **Natural Gas Prices Experience Reprieve from Selling**

Hampshire Public Utilities Commission. Unitil has requested an increase of \$4.7 million in base revenue, or an increase of approximately 7 percent over total operating revenue. The filing includes a request for temporary rates effective August 1, 2017. A final order on the filing is expected in mid-2018. The filing also includes a proposal for a multi-year rate plan which would provide for the recovery of costs associated with operational and safety-related improvements and upgrades Unitil is making to its gas distribution system in New Hampshire over the next several years. For more on this story visit [Nasdaq.com](http://bit.ly/2sAUFTr) or click the following link <http://bit.ly/2sAUFTr>

Natural Gas Prices Experience Reprieve from Selling — Economic Calendar reports: After five consecutive days of losses, natural gas prices are rebounding in today's session, as the contract for July delivery on the New York Mercantile Exchange is currently trading at \$3.039/MMBtu, a gain of 2.05% for the day. A rebound from the lows on Monday suggested the recent rout in natural gas prices may have been nearing at least a temporary end. In addition, the July contract has been extremely oversold since the end of May, signaling that the decline was overextended and that a rebound was likely to develop. Natural gas prices were boosted from the session lows on Monday by news that Saudi Arabia and key allies cut ties today with Qatar, the world's top seller of liquefied natural gas. For more on this story visit [economiccalendar.com](http://bit.ly/2r2yQtY) or click the following link <http://bit.ly/2r2yQtY>

12 MONTH CANDLESTICK (WEEKLY)



Prompt Natural Gas (NG) Daily Sentiment

BEARISH



RESISTANCE
3.12 & 3.18
SUPPORT
2.99 & 2.94

Trading Summary

NATURAL GAS

Futures	Close	Change
NG	3.042	0.060
Volume	339,530	(306,030)
Open Int.	1,515,979	(8,888)

CRUDE AND GASOLINE

Futures	Close	Change
Crude	48.19	0.79
RBOB	1.5545	0.0164
Crude/NG	15.84	(0.05)

METALS

Futures	Close	Change
Gold	1,294.40	(5.30)

EQUITIES

Exchange	Close	Change
DOW	21,136.23	(47.81)
S&P 500	2,294.62	(141.48)

CURRENCY

Currency	Close	Change
EUR/USD	1.1276	0.0011
USD/CND	1.3449	(0.0002)

Contact Us



Mansfield Energy Corp
1025 Airport Pkwy
Gainesville, GA 30501

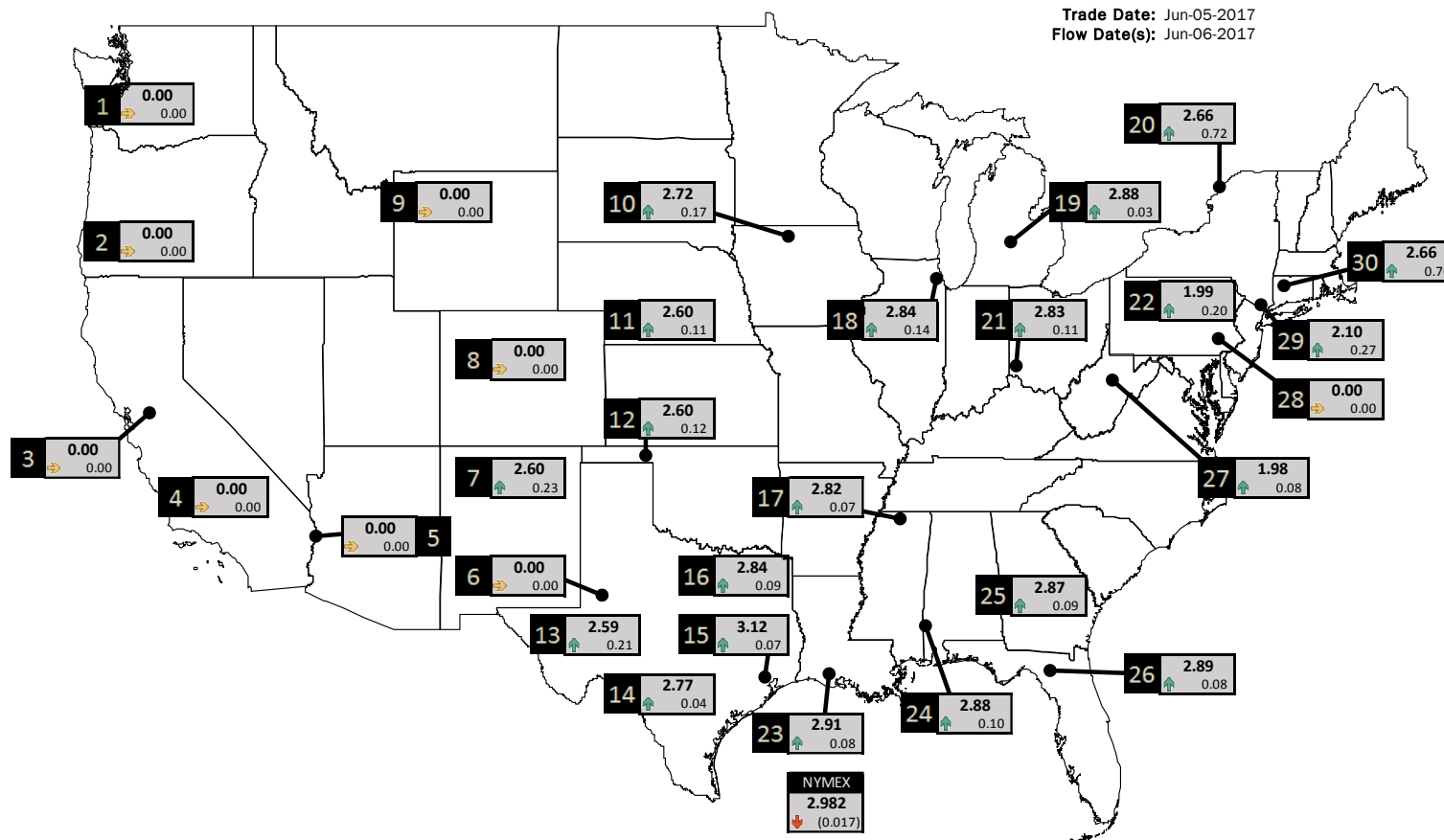
www.mansfield.energy
info@mansfieldoil.com

Phone: (800) 695-6626



NATURAL GAS NEWS

PHYSICAL SPOT NATURAL GAS PRICE MAP



ID	DAILY INDEX	PRICE	CHANGE
1	Stanfield	0.00	0.00
2	Malin	0.00	0.00
3	PG&E - Citygate	0.00	0.00
4	SoCal-Citygate	0.00	0.00
5	SoCal Border	0.00	0.00
6	Waha	0.00	0.00
7	EPSJ Blanco Pool	2.60	0.23
8	Opal Plant Tailgate	0.00	0.00
9	NWP-Wyoming	0.00	0.00
10	Ventura	2.72	0.17

ID	DAILY INDEX	PRICE	CHANGE
11	NGPL-Midcont Pool	2.60	0.11
12	Panhandle	2.60	0.12
13	EP-Permian	2.59	0.21
14	TGP-ZO	2.77	0.04
15	Houston Ship Channel	3.12	0.07
16	NGPL-TXOK	2.84	0.09
17	TETCO-M1.30	2.82	0.07
18	Chicago Citygates	2.84	0.14
19	Michcon	2.88	0.03
20	Iroquois (into)	2.66	0.72

ID	DAILY INDEX	PRICE	CHANGE
21	REX E-ANR	2.83	0.11
22	Leidy-Transco	1.99	0.20
23	Henry	2.91	0.08
24	Transco-85	2.88	0.10
25	Sonat-ZO South	2.87	0.09
26	FGT-Z3	2.89	0.08
27	Dominion-South	1.98	0.08
28	Transco-Z6 (non-NY)	0.00	0.00
29	Transco-Z6 (NY)	2.10	0.27
30	Iroquois-Z2	2.66	0.76

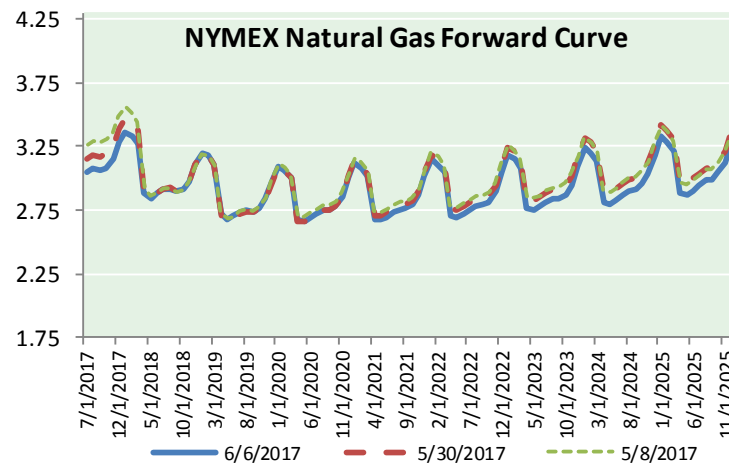
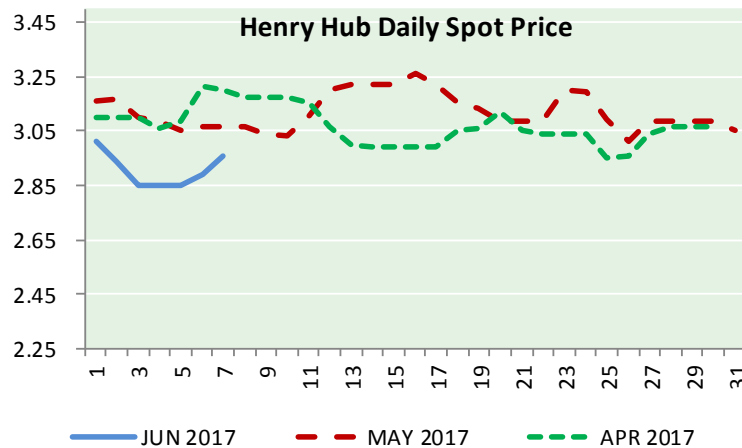
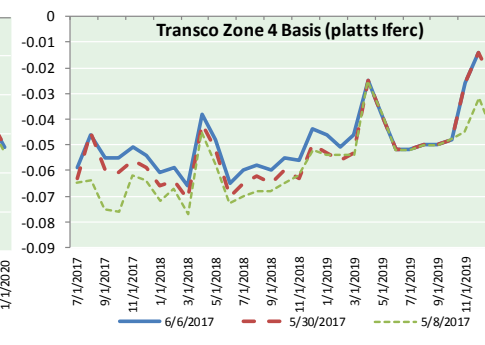
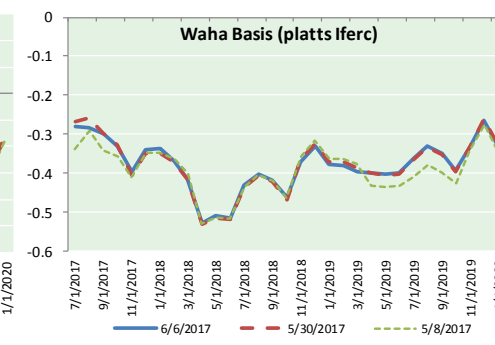
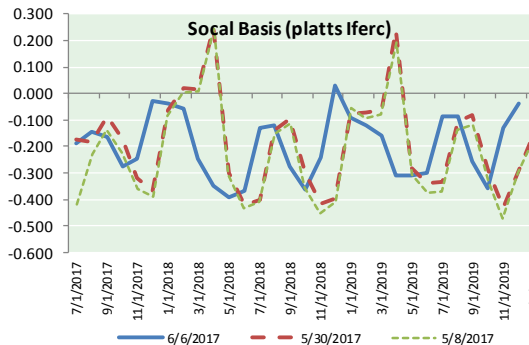
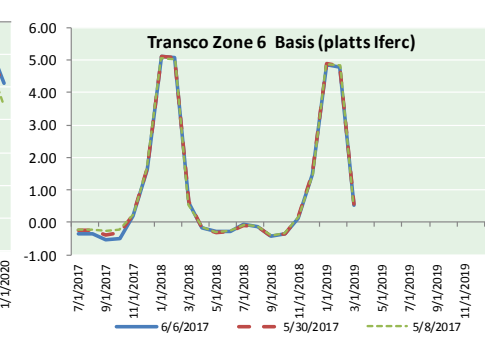
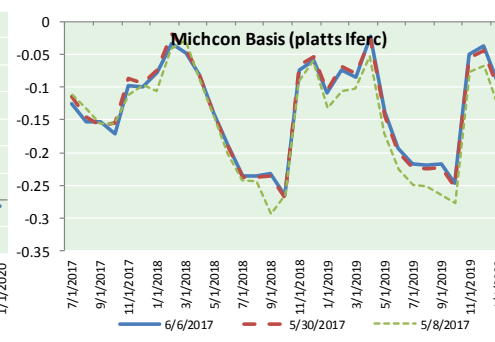
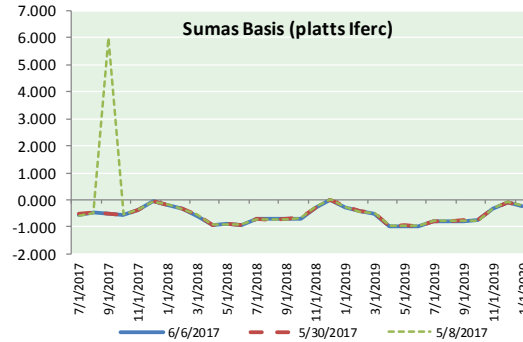


DISCLAIMER: The content herein is privileged and confidential. Content is presented for informational purposes and is a reflection of the market opinions of its authors subject to change without notice. Content is derived from sources believed to be accurate at the time of release but carries no guarantee of accuracy or completeness. Mansfield Energy Corp and its clients may or may not take positions similar or opposite those discussed herein. The reader should realize that the trading of commodities involves risk, and the reader assumes all responsibility for the risk of financial losses.



NATURAL GAS NEWS

NATURAL GAS BASIS FUTURES, HENRY HUB SPOT PRICES, AND FORWARD CURVE



CME NG Option Prices

ATM Call

Month	Strike	Close	Imp Vol
Jul-17	3.050	0.109	33.7
Aug-17	3.100	0.158	33.7
Sep-17	3.100	0.184	31.9
Oct-17	3.100	0.225	31.9
Nov-17	3.100	0.288	31.9
Dec-17			
Jan-18			
Feb-18			
Mar-18			
Apr-18			
May-18			
Jun-18			
Jul-18			
Aug-18			
Sep-18			
Oct-18			
Nov-18			

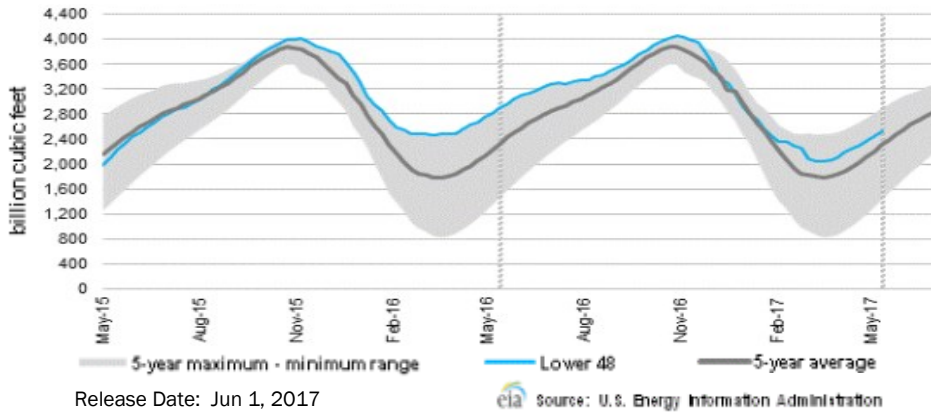
CME NG Option Prices

ATM Put

Month	Strike	Close	Imp Vol
Jul-17	3.050	0.108	41.2
Aug-17	3.100	0.176	39.4
Sep-17	3.100	0.225	37.5
Oct-17	3.100	0.239	35.6
Nov-17	3.100	0.323	35.6
Dec-17			
Jan-18			
Feb-18			
Mar-18			
Apr-18			
May-18			
Jun-18			
Jul-18			
Aug-18			
Sep-18			
Oct-18			
Nov-18			

NATURAL GAS NEWS

WEEKLY GAS IN UNDERGROUND STORAGE WITH 5-YR RANGE



Rig Count

Report Date: June 2, 2017

	Total	Change
US -	916	+8
CN -	99	+6

EIA Storage History for 22nd Week of Year (Due to Report Jun 8)

Year	Week Ending	BCF
2013	May 31, 2013	+110
2014	May 30, 2014	+119
2015	May 29, 2015	+132
2016	May 27, 2016	+82

ESTIMATE – TBD

Total Working Gas In Storage

2,525 BCF

- +81 BCF (LAST WEEK)
- (370) BCF (LAST YEAR)
- +225 BCF (5-YR AVG)

U.S. Natural Gas Supply Gas Week 5/25 - 5/31

Average daily values (BCF/D):

Last Year (BCF/d)

Dry Production – +71.8

Total Supply – +77.5

Last Week (BCF/d)

Dry Production – +70.8

Total Supply – +77.0

[NEXT REPORT ON JUN 8]

U.S. Natural Gas Demand Gas Week 5/25 - 5/31

Average daily values (BCF/d):

Last Year (BCF/d)

Power – +26.0

Total Demand – +70.9

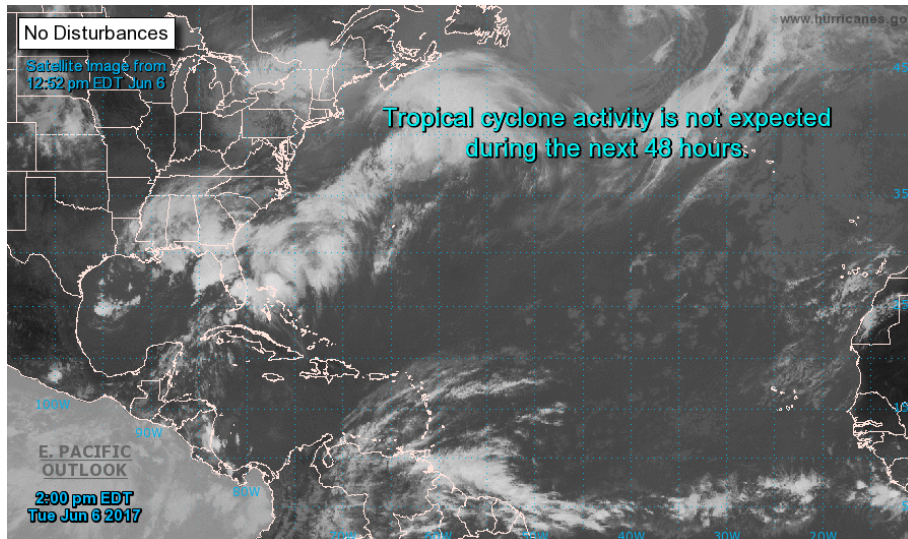
Last Week (BCF/d)

Power – +22.4

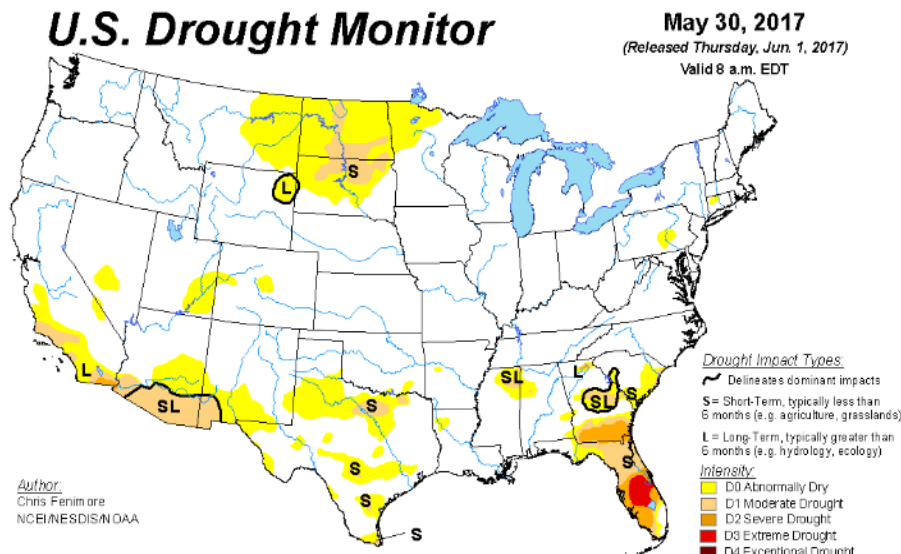
Total Demand – +70.0

[NEXT REPORT ON JUN 8]

TROPICAL STORM ACTIVITY– ATLANTIC



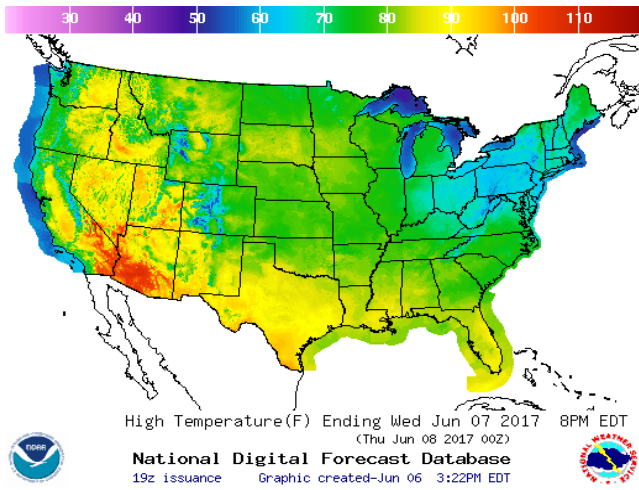
US DROUGHT MONITOR



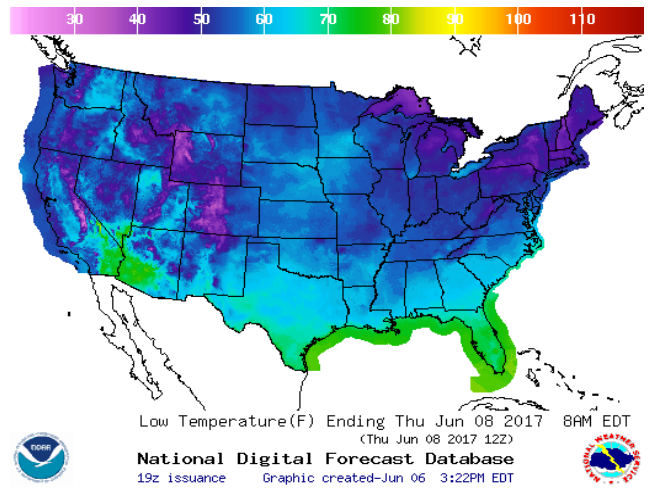
NATURAL GAS NEWS

WEATHER – HIGH / LOW TEMPERATURE TOMORROW

HIGH Temperature

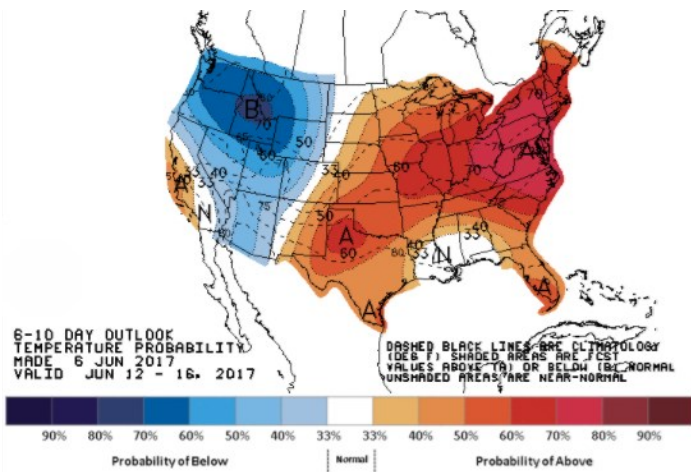


LOW Temperature

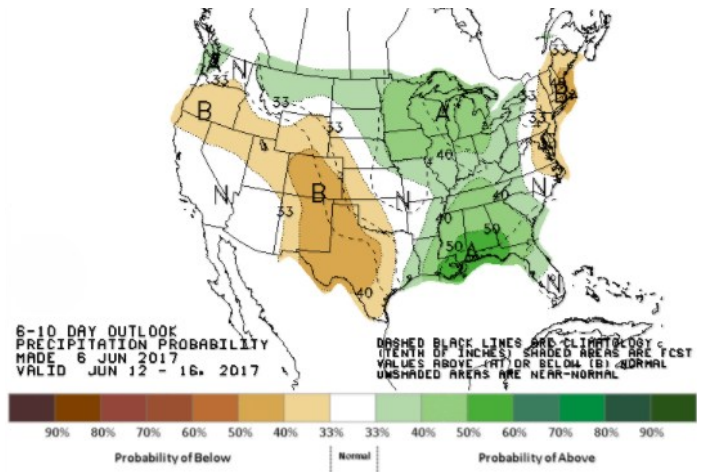


WEATHER – 6 TO 10 DAY OUTLOOK – NOAA

Temperature

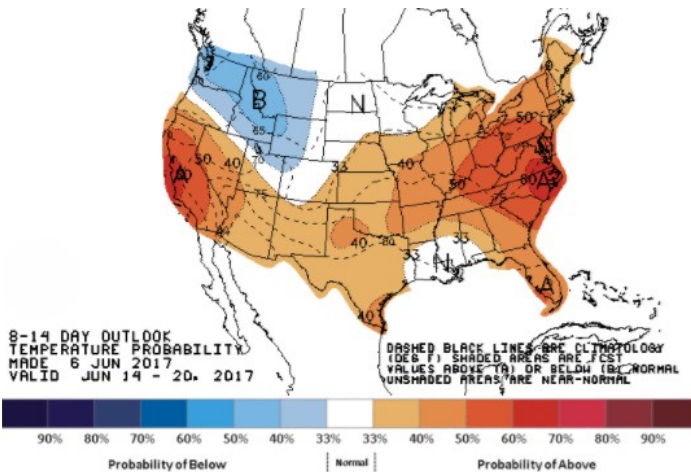


Precipitation

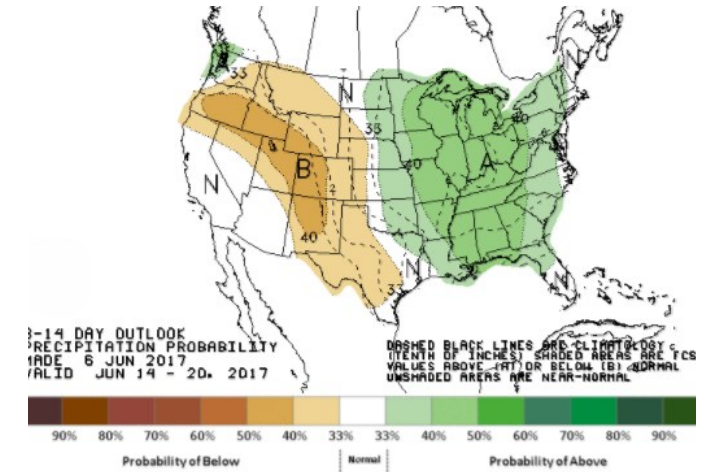


WEATHER – 8 TO 14 DAY OUTLOOK – NOAA

Temperature

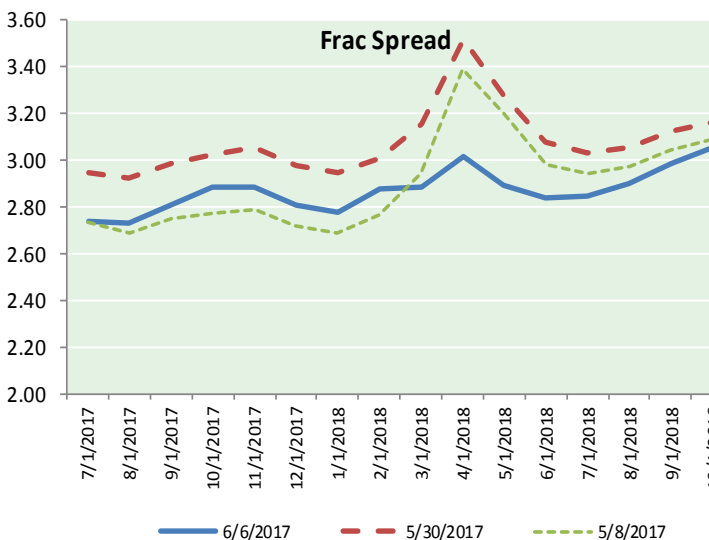
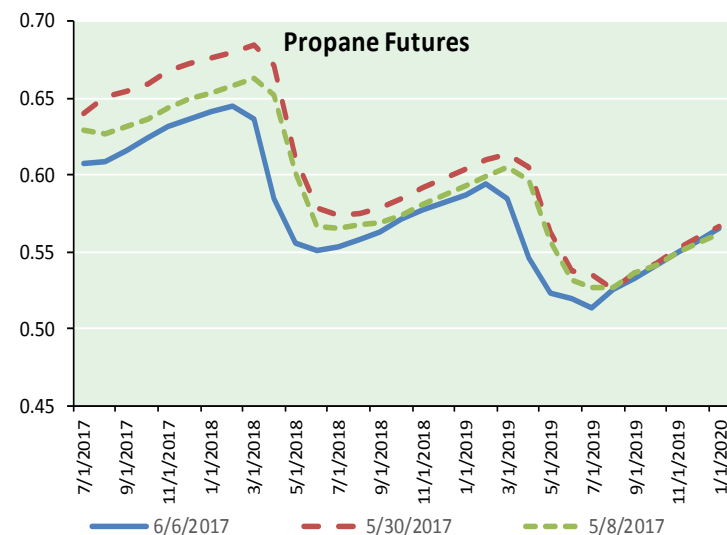
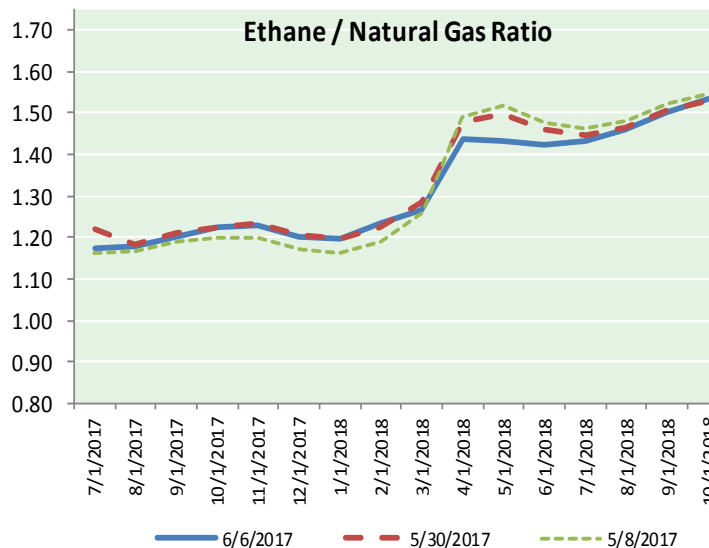
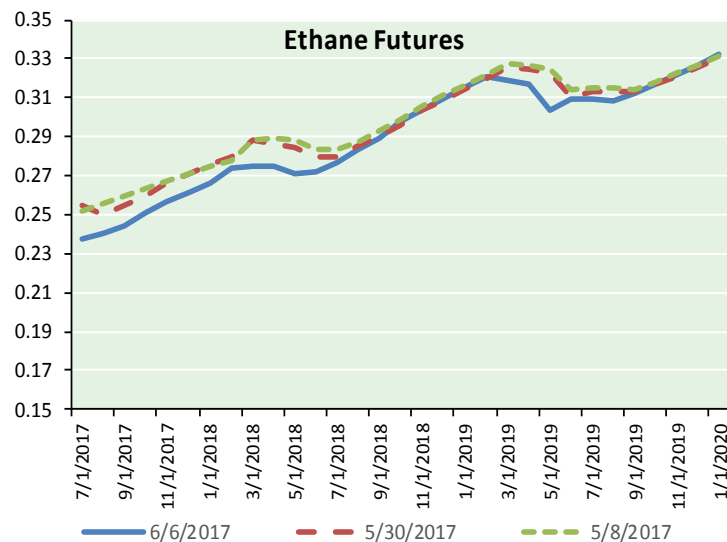


Precipitation





ETHANE FUTURES, NG/ETHANE RATIO, PROPANE FUTURES, AND THE FRAC SPREAD



CME Future Prices

Ethane (C2)

Non-LDH— Mont Belvieu

Month	Close	Change
Jul-17	0.237	0.004
Aug-17	0.241	0.002
Sep-17	0.245	0.003
Oct-17	0.251	0.003
Nov-17	0.257	0.003
Dec-17	0.262	0.002
Jan-18	0.267	0.002
Feb-18	0.274	0.001
Mar-18	0.275	0.003
Apr-18	0.275	0.004
May-18	0.271	0.003
Jun-18	0.272	0.003

1YR Strip 0.260 0.003

CME Future Prices

Propane (C3)

Non-LDH— Mont Belvieu

Month	Close	Change
Jul-17	0.608	0.001
Aug-17	0.609	(0.000)
Sep-17	0.616	(0.001)
Oct-17	0.625	(0.000)
Nov-17	0.631	0.000
Dec-17	0.636	0.000
Jan-18	0.641	0.000
Feb-18	0.646	0.001
Mar-18	0.637	0.002
Apr-18	0.585	0.004
May-18	0.556	0.006
Jun-18	0.551	0.005

1YR Strip 0.612 0.001

NATURAL GAS NEWS



Prompt WTI (CL) Crude Daily Sentiment

BEARISH



RESISTANCE
48.75 & 49.30
SUPPORT
47.29 & 46.38

FOLLOW US ON TWITTER:



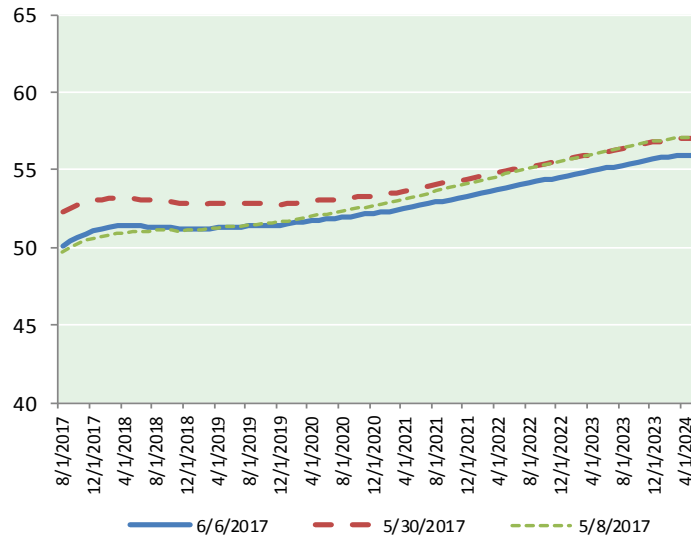
@MPG_NatGasNews

NYMEX Brent (BZ)

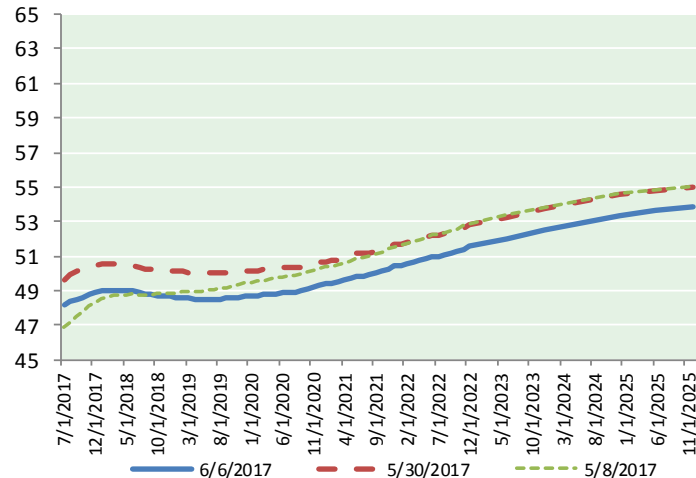
Futures

Month	Close	Change
Aug-17	50.12	0.65
Sep-17	50.42	0.61
Oct-17	50.67	0.58
Nov-17	50.88	0.55
Dec-17	51.07	0.51
Jan-18	51.21	0.47
Feb-18	51.31	0.43
Mar-18	51.37	0.40
Apr-18	51.39	0.37
May-18	51.38	0.33
Jun-18	51.36	0.31
Jul-18	51.35	0.29
Aug-18	51.34	0.26
Sep-18	51.30	0.23
Oct-18	51.25	0.22
Nov-18	51.21	0.20
Dec-18	51.18	0.18
Jan-19	51.19	0.16
Feb-19	51.21	0.15
Mar-19	51.24	0.12
Apr-19	51.30	0.11
May-19	51.31	0.08
Jun-19	51.30	0.06
Jul-19	51.35	0.04
1YR Strip 2017	51.04	0.46
5YR Strip	50.63	0.58
	51.97	0.05

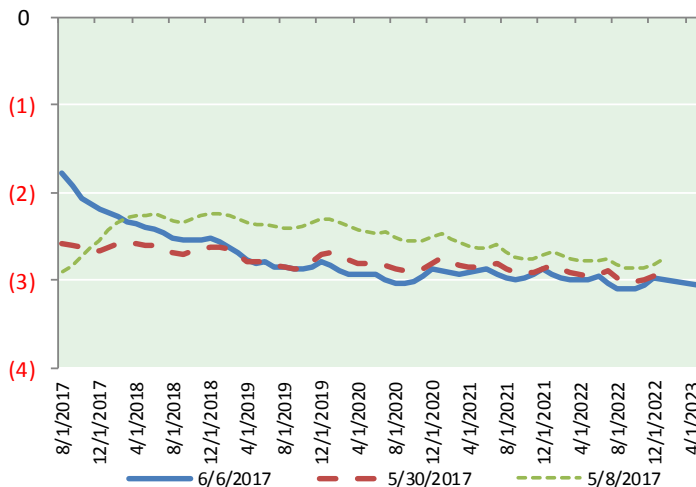
BRENT CRUDE FORWARD CURVE



WTI CRUDE FORWARD CURVE



WTI-BRENT SPREAD



FRAC Spread

Specifications

Ethane : 42% 66,500 btu/g
Propane: 28% 90,830 btu/g
Butane: 11% 102,916 btu/g
Iso-Butane: 6% 98,935 btu/g
Natural Gasoline: 13%
115,021 btu/g

Prompt NGL Futures

(\$/gallon)

	Jul-17	Close	Change
Butane	0.720	0.004	
Iso-Butane	0.728	0.012	
Nat Gasoline	1.057	0.004	

NYMEX WTI (CL) Futures

Month	Close	Change
Jul-17	48.19	0.79
Aug-17	48.34	0.76
Sep-17	48.49	0.74
Oct-17	48.61	0.72
Nov-17	48.76	0.70
Dec-17	48.88	0.66
Jan-18	48.98	0.64
Feb-18	49.03	0.61
Mar-18	49.04	0.56
Apr-18	49.03	0.52
May-18	48.99	0.48
Jun-18	48.95	0.45
Jul-18	48.89	0.42
Aug-18	48.83	0.40
Sep-18	48.77	0.36
Oct-18	48.72	0.33
Nov-18	48.68	0.30
Dec-18	48.66	0.27
Jan-19	48.62	0.25
Feb-19	48.59	0.23
Mar-19	48.55	0.21
Apr-19	48.53	0.19
May-19	48.51	0.17
Jun-19	48.52	0.15
1YR Strip 2017	48.77	0.64
5YR Strip	48.55	0.73
	49.18	0.17