

NATURAL GAS



JULY 31, 2018

**Prior Day's NYMEX
Aug-18 Contract (CT)**



NYMEX NG Futures

Month	Close	Change
Sep-18	2.797	0.015
Oct-18	2.817	0.017
Nov-18	2.866	0.018
Dec-18	2.974	0.018
Jan-19	3.057	0.018
Feb-19	3.025	0.019
Mar-19	2.925	0.020
Apr-19	2.635	0.022
May-19	2.608	0.025
Jun-19	2.639	0.025
Jul-19	2.671	0.025
Aug-19	2.677	0.024
Sep-19	2.658	0.024
Oct-19	2.674	0.023
Nov-19	2.726	0.023
Dec-19	2.851	0.021
Jan-20	2.945	0.021
Feb-20	2.908	0.019
Mar-20	2.808	0.016
Apr-20	2.511	0.009
May-20	2.477	0.007
Jun-20	2.506	0.006
Jul-20	2.536	0.005
Aug-20	2.542	0.004
1YR Strip	2.808	0.021
2018	2.864	0.017
5YR Strip	2.671	0.009

IN THE NEWS

\$40 Billion LNG Project Finally Starts Up— Oil Price reported: Japan's largest exploration and production company, Inpex, said on Monday that it had started producing gas at the Ichthys liquefied natural gas (LNG) project, which has cost US\$40 billion and has faced delays in its development. Inpex, the operator of the project with a 62.245-percent operat-

- **\$40 Billion LNG Project Finally Starts Up**
- **The Oil And Gas Boom Sends U.S. GDP Soaring**

ing interest, expects first shipment of products from the project toward the end of the first half of its current fiscal year—April to September. The produced gas will be gathered within the Central Processing Facility (Ichthys Explorer) where it will be separated into gases and liquids. Then the liquids will be piped to the nearby Floating Production, Storage and Offloading (FPSO) facility—Ichthys Venturer—while the gases will be transported via the 890-kilometer (553-mile) long Gas Export Pipeline (GEP) to the on-shore gas liquefaction plant at Darwin in Australia's Northern Territory. For more on this story visit oilprice.com or click <https://bit.ly/2Ox4D2V>

The Oil And Gas Boom Sends U.S. GDP Soaring— Oil Price reported: Higher oil prices this year boosted U.S. oil production, and the U.S. oil industry played a large part in America's impressive second quarter economic growth—the fastest growth since the third quarter of 2014. Real U.S. gross domestic product (GDP) rose at an annual rate of 4.1 percent in the second quarter of 2018, according to the 'advance' estimate released by the Bureau of Economic Analysis (BEA) on Friday. The first quarter of this year, by comparison, saw real GDP increase by 2.2 percent. The increase in real GDP in the second quarter of 2018 reflected positive contributions from personal consumption expenditures (PCE), exports, nonresidential fixed investment, federal government spending, and state and local government spending that were partly offset by negative contributions from private inventory investment and residential fixed investment, BEA said. For more on this story visit wsj.com or click <https://bit.ly/2LC2022>

12 MONTH CANDLESTICK (WEEKLY)



**Prompt Natural Gas
(NG) Daily Sentiment**

NEUTRAL



RESISTANCE

2.82 & 2.84

SUPPORT

2.77 & 2.74

Trading Summary

NATURAL GAS

Futures	Close	Change
NG	2.797	0.015
Volume	294,143	(241,323)
Open Int.	1,516,613	10,824

CRUDE AND GASOLINE

Futures	Close	Change
Crude	70.13	1.44
RBOB	2.1603	(0.0016)
Crude/NG	25.07	0.38

METALS

Futures	Close	Change
Gold	1,221.30	(3.20)

EQUITIES

Exchange	Close	Change
DOW	25,306.83	(144.23)
S&P 500	-1,374.07	(16.22)

CURRENCY

Currency	Close	Change
EUR/USD	1.1728	0.0022
USD/CND	1.2405	(0.0006)

Contact Us



Mansfield Energy Corp
1025 Airport Pkwy
Gainesville, GA 30501

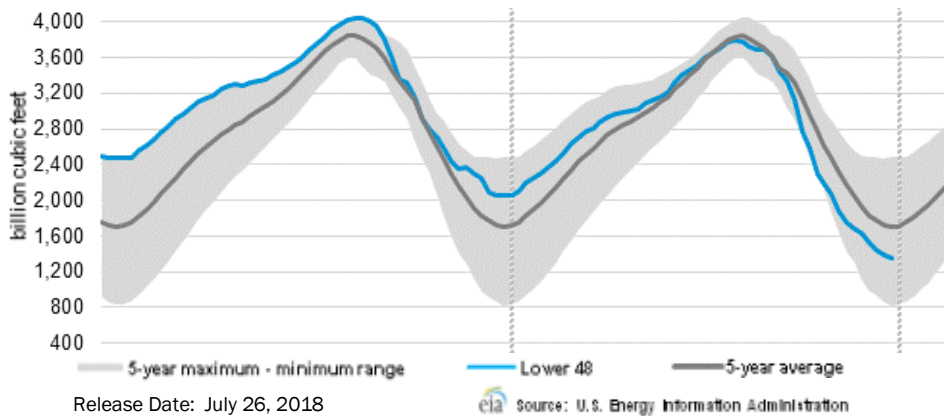
www.mansfield.energy

info@mansfieldoil.com

Phone: (800) 695-6626



WEEKLY GAS IN UNDERGROUND STORAGE WITH 5-YR RANGE



Rig Count

Report Date: July 27, 2018

	Total	Change
US -	1048	+2
CN -	223	+12

EIA Weekly NG Storage Actual and Surveys for July 27, 2018

Released July 26, 2018

Range (35) to (63)

PIRA – (29)

Citi Futures – (44)

Reuters – (31)

EIA ACTUAL – 24

Total Working Gas In Storage

2,273 BCF

24 BCF (LAST WEEK)

(705) BCF (LAST YEAR)

(557) BCF (5-YR AVG)

U.S. Natural Gas Supply Gas Week 7/19 – 7/25

Average daily values (BCF/D):

Last Year (BCF/d)

Dry Production – +73.0

Total Supply – +79.4

Last Week (BCF/d)

Dry Production – +80.5

Total Supply – +86.6

[NEXT REPORT ON Aug 3]

U.S. Natural Gas Demand Gas Week 7/19 – 7/25

Average daily values (BCF/D):

Last Year (BCF/d)

Power – +38.3

Total Demand – +75.6

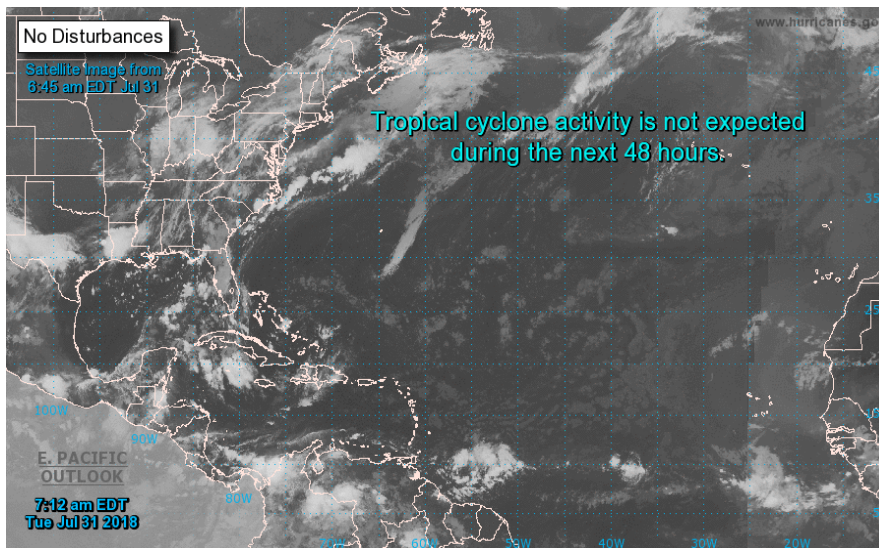
Last Week (BCF/d)

Power – +39.0

Total Demand – +80.0

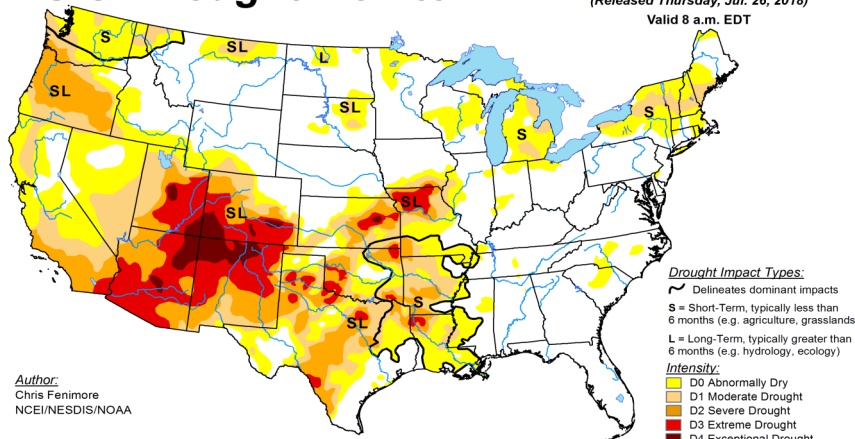
[NEXT REPORT ON Aug 3]

TROPICAL STORM ACTIVITY— ATLANTIC

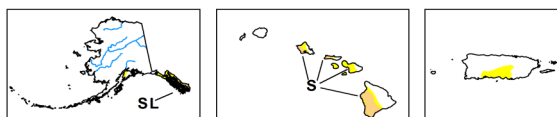


U.S. Drought Monitor

July 24, 2018
 (Released Thursday, Jul. 26, 2018)
 Valid 8 a.m. EDT



Author:
 Chris Fenimore
 NCEI/NESDIS/NOAA

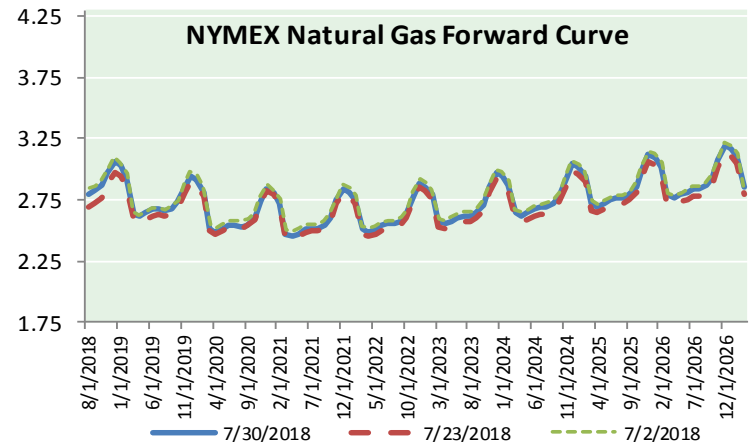
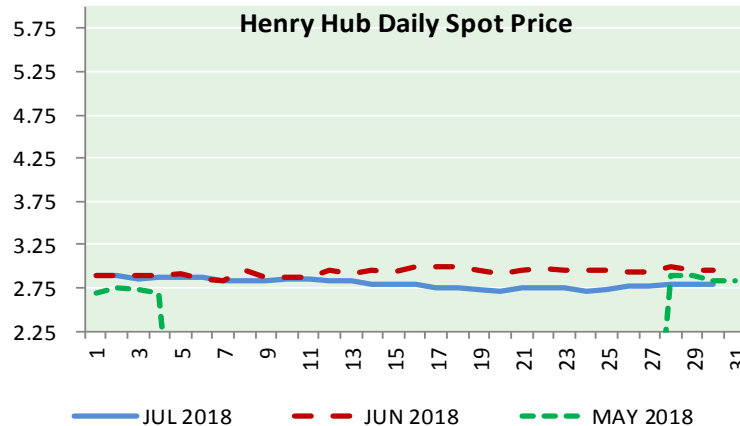
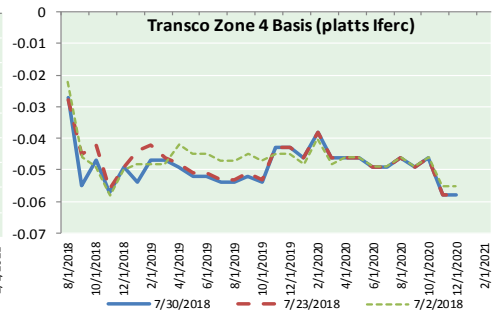
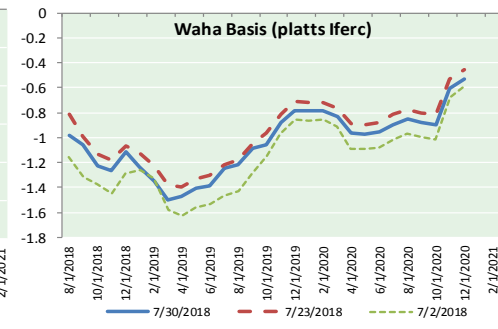
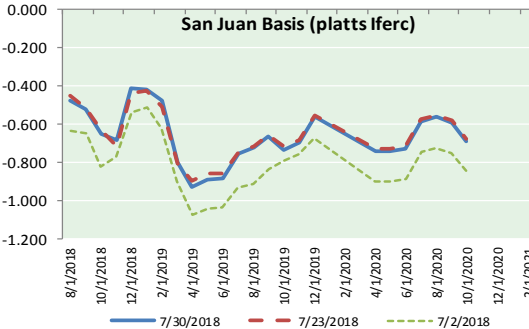
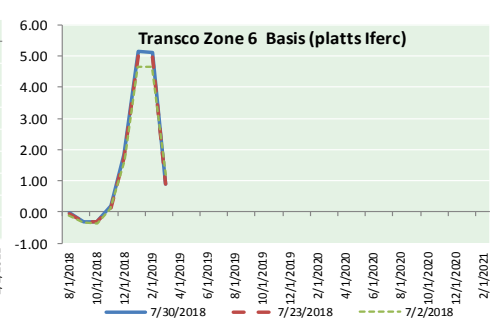
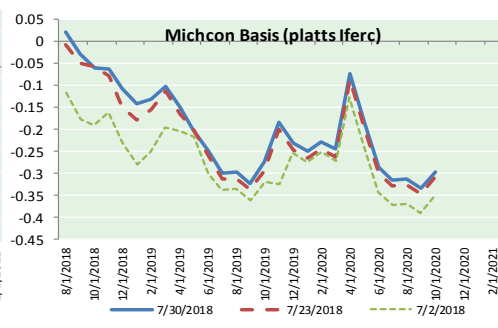
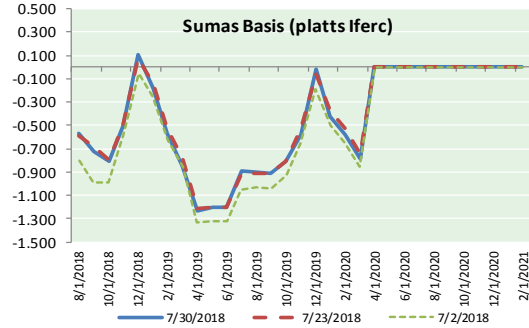


USDA NDMC NOAA
<http://droughtmonitor.unl.edu/>



NATURAL GAS NEWS

NATURAL GAS BASIS FUTURES, HENRY HUB SPOT PRICES, AND FORWARD CURVE



NYMEX WTI Delivery

Month Average (\$/bbl)

(Excluding Weekends and Holidays)

Month: July 2018

Day	Price	Day	Price
1		16	68.06
2	73.94	17	68.08
3	74.14	18	68.76
4		19	69.46
5	72.94	20	70.46
6	73.80	21	
7		22	
8		23	67.89
9	73.85	24	68.52
10	74.11	25	69.30
11	70.38	26	69.61
12	70.33	27	68.69
13	71.01	28	
14		29	
15		30	70.13
		31	

Average (Jul) 70.6730
(through 07/30/2018)

Average (Jun) 67.3229

Average (May) 69.9832

CME NG Option Prices

ATM Call

Month	Strike	Close	Imp Vol
Oct-18			
Nov-18	2.850	0.073	18.7
Dec-18			
Jan-19			
Feb-19			

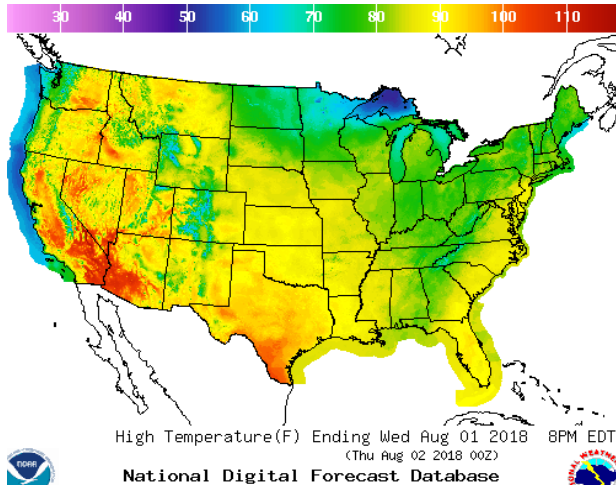
CME NG Option Prices

ATM Put

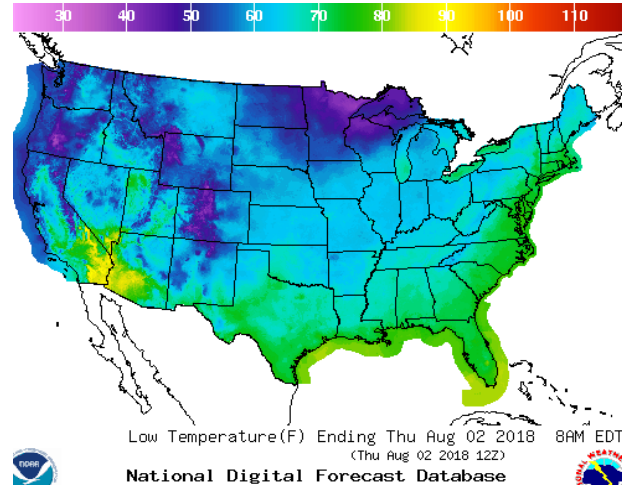
Month	Strike	Close	Imp Vol
Oct-18			
Nov-18	2.850	0.112	22.5
Dec-18			
Jan-19			
Feb-19			

WEATHER – HIGH / LOW TEMPERATURE TOMORROW

HIGH Temperature

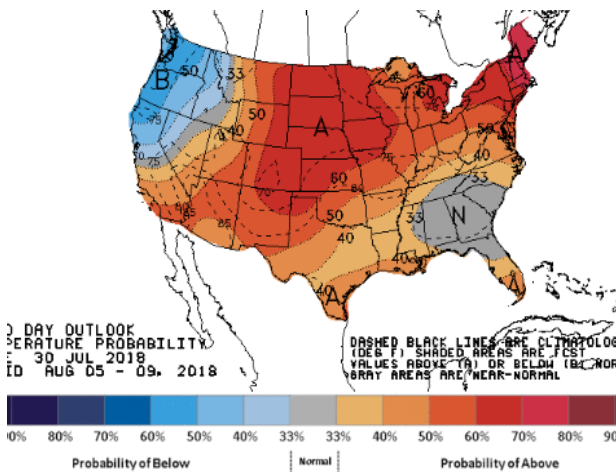


LOW Temperature

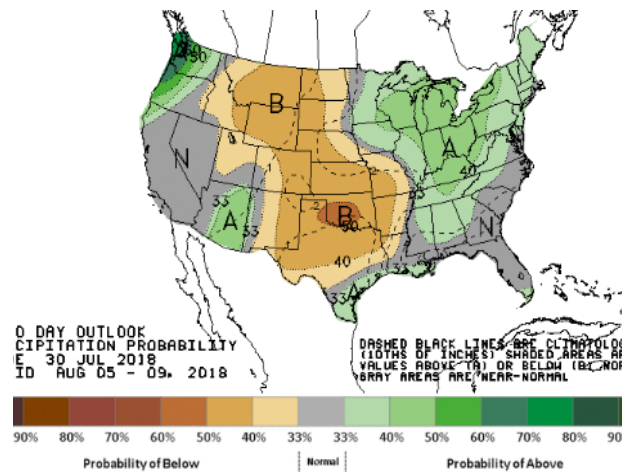


WEATHER – 6 TO 10 DAY OUTLOOK – NOAA

Temperature

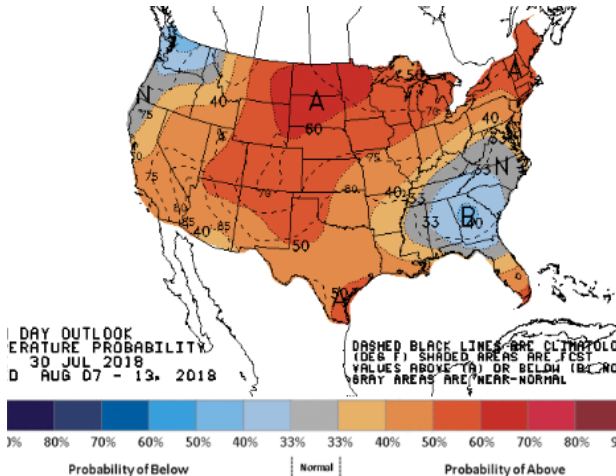


Precipitation

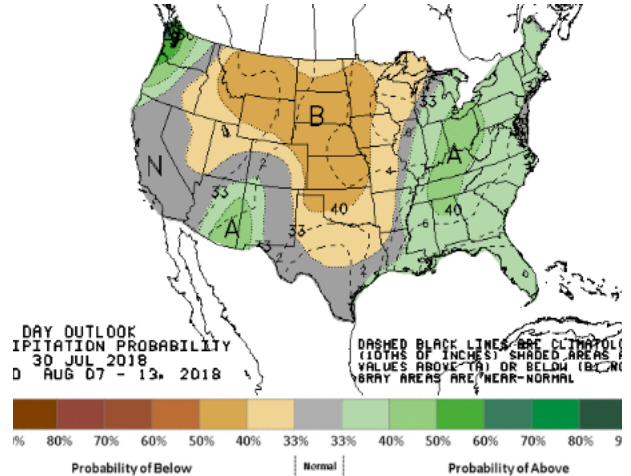


WEATHER – 8 TO 14 DAY OUTLOOK – NOAA

Temperature



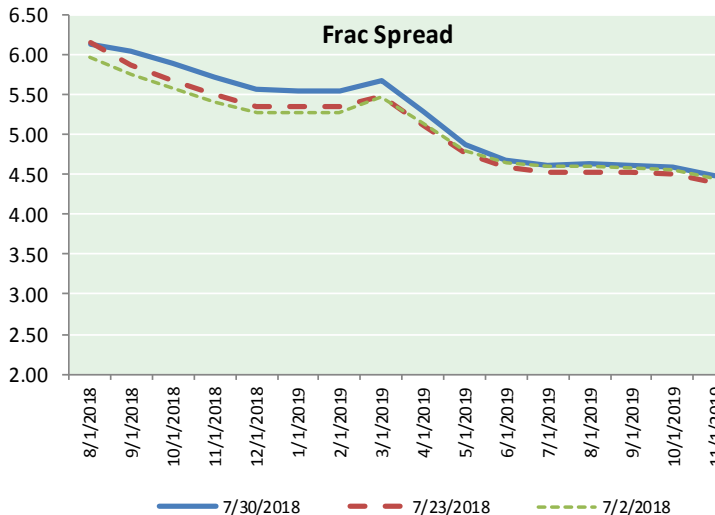
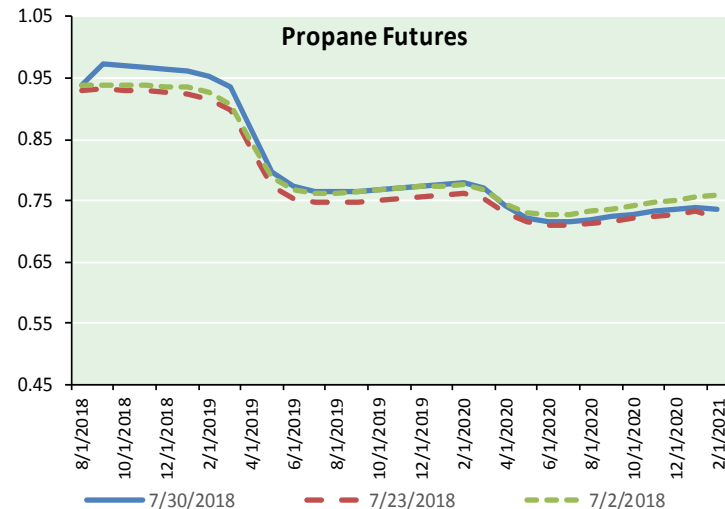
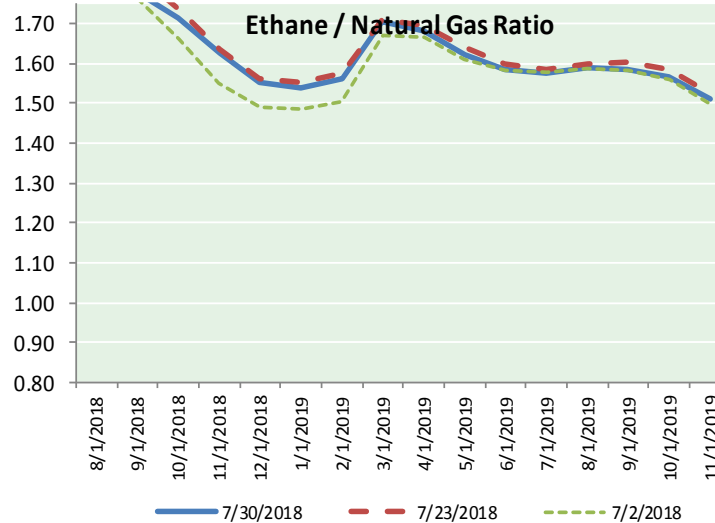
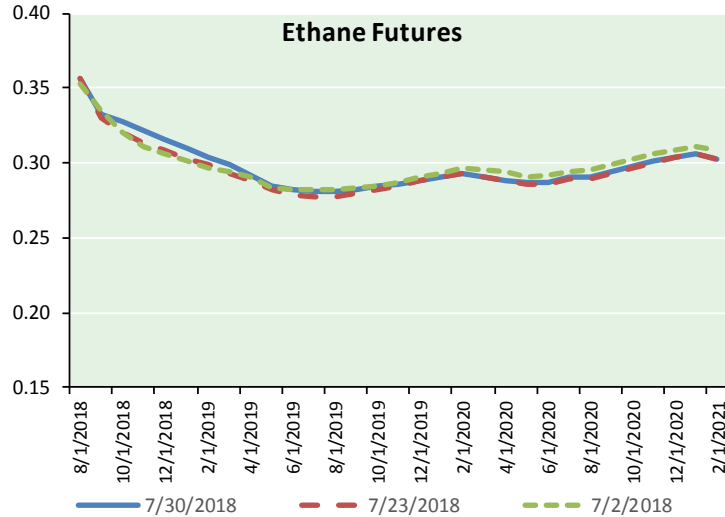
Precipitation



NATURAL GAS NEWS



ETHANE FUTURES, NG/ETHANE RATIO, PROPANE FUTURES, AND THE FRAC SPREAD



CME Future Prices

Ethane (C2)

Non-LDH— Mont Belvieu

Month	Close	Change
Aug-18	0.357	0.001
Sep-18	0.333	0.009
Oct-18	0.327	0.008
Nov-18	0.321	0.008
Dec-18	0.315	0.007
Jan-19	0.310	0.005
Feb-19	0.304	0.004
Mar-19	0.299	0.003
Apr-19	0.292	0.003
May-19	0.285	0.003
Jun-19	0.282	0.002
Jul-19	0.281	0.002

1YR Strip 0.309 0.005

CME Future Prices

Propane (C3)

Non-LDH— Mont Belvieu

Month	Close	Change
Aug-18	0.939	0.001
Sep-18	0.973	0.003
Oct-18	0.970	0.004
Nov-18	0.968	0.004
Dec-18	0.965	0.004
Jan-19	0.962	0.004
Feb-19	0.952	0.004
Mar-19	0.935	0.003
Apr-19	0.862	0.002
May-19	0.798	0.002
Jun-19	0.773	0.001
Jul-19	0.764	0.001

1YR Strip 0.905 0.003

NATURAL GAS NEWS



**Prompt WTI (CL) Crude
Daily Sentiment**

BULLISH



RESISTANCE
70.77 & 71.42
SUPPORT
69.14 & 68.16

FOLLOW US ON TWITTER:



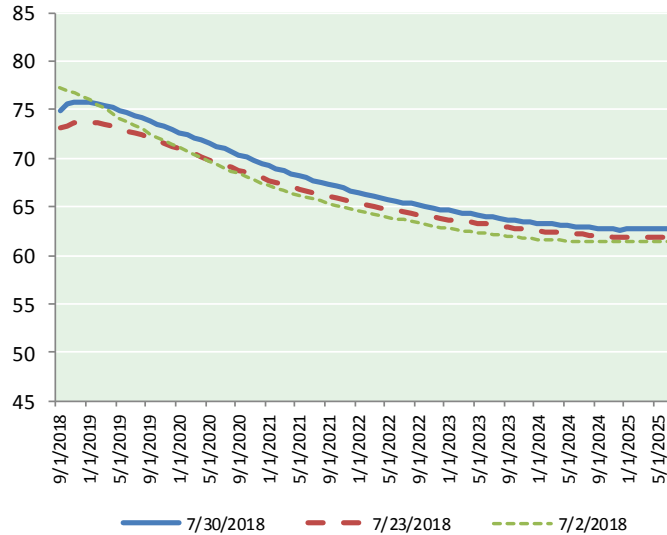
@MPG_NatGasNews

NYMEX Brent (BZ)

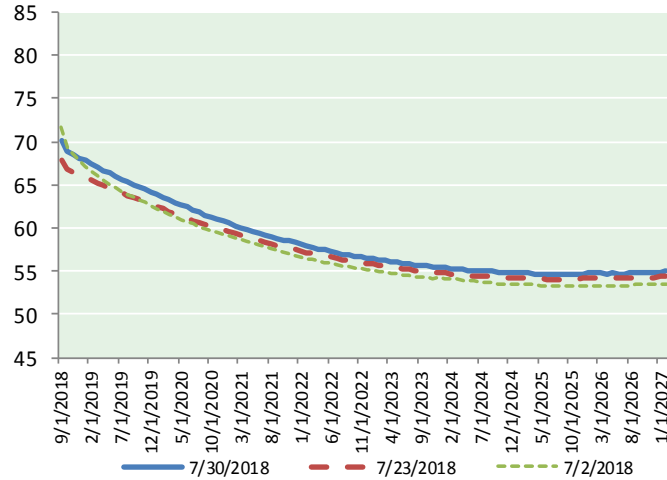
Futures

Month	Close	Change
Sep-18	74.97	0.68
Oct-18	75.55	0.79
Nov-18	75.75	0.77
Dec-18	75.81	0.76
Jan-19	75.76	0.73
Feb-19	75.62	0.70
Mar-19	75.43	0.69
Apr-19	75.21	0.68
May-19	74.95	0.66
Jun-19	74.67	0.65
Jul-19	74.41	0.63
Aug-19	74.14	0.61
Sep-19	73.87	0.59
Oct-19	73.56	0.57
Nov-19	73.29	0.56
Dec-19	72.97	0.54
Jan-20	72.67	0.53
Feb-20	72.39	0.51
Mar-20	72.10	0.49
Apr-20	71.81	0.47
May-20	71.53	0.44
Jun-20	71.25	0.41
Jul-20	70.95	0.39
Aug-20	70.65	0.37
1YR Strip	75.19	0.70
2018	75.52	0.75
5YR Strip	69.30	0.30

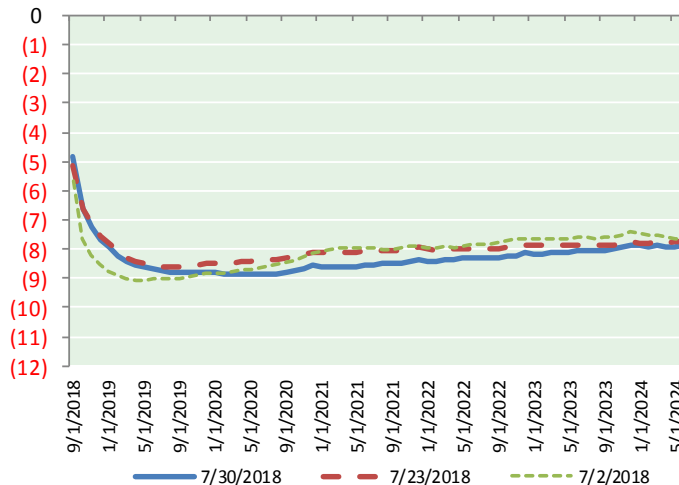
BRENT CRUDE FORWARD CURVE



WTI CRUDE FORWARD CURVE



WTI-BRENT SPREAD



FRAC Spread

Specifications

Ethane :	42%	66,500 btu/g
Propane:	28%	90,830 btu/g
Butane: 11%	102,916 btu/g	
Iso-Butane: 6%	98,935 btu/g	
Natural Gasoline: 13%		
		115,021 btu/g

Prompt NGL Futures

(\$/gallon)

Aug-18	Close	Change
Butane	1.249	0.009
Iso-Butane	1.208	0.008
Nat Gasoline	1.518	0.001

NYMEX WTI (CL) Futures

Month	Close	Change
Sep-18	70.13	1.44
Oct-18	68.95	1.22
Nov-18	68.51	1.15
Dec-18	68.14	1.10
Jan-19	67.82	1.04
Feb-19	67.38	1.01
Mar-19	66.99	0.97
Apr-19	66.65	0.93
May-19	66.35	0.90
Jun-19	66.02	0.83
Jul-19	65.69	0.81
Aug-19	65.35	0.76
Sep-19	65.05	0.75
Oct-19	64.76	0.71
Nov-19	64.47	0.68
Dec-19	64.20	0.65
Jan-20	63.87	0.63
Feb-20	63.55	0.59
Mar-20	63.24	0.56
Apr-20	62.95	0.53
May-20	62.69	0.50
Jun-20	62.41	0.46
Jul-20	62.09	0.43
Aug-20	61.81	0.41
1YR Strip	67.33	1.01
2018	68.93	1.23
5YR Strip	60.88	0.36