

NATURAL GAS



JULY 16, 2018

Prior Day's NYMEX

Aug-18 Contract (CT)



NYMEX NG Futures

Month	Close	Change
Aug-18	2.752	(0.045)
Sep-18	2.724	(0.042)
Oct-18	2.740	(0.040)
Nov-18	2.792	(0.040)
Dec-18	2.912	(0.037)
Jan-19	2.999	(0.034)
Feb-19	2.967	(0.033)
Mar-19	2.875	(0.031)
Apr-19	2.609	(0.026)
May-19	2.583	(0.024)
Jun-19	2.613	(0.024)
Jul-19	2.644	(0.024)
Aug-19	2.651	(0.024)
Sep-19	2.633	(0.024)
Oct-19	2.652	(0.023)
Nov-19	2.706	(0.023)
Dec-19	2.837	(0.023)
Jan-20	2.935	(0.021)
Feb-20	2.899	(0.019)
Mar-20	2.805	(0.018)
Apr-20	2.537	(0.007)
May-20	2.503	(0.008)
Jun-20	2.535	(0.008)
Jul-20	2.568	(0.008)
1YR Strip	2.768	(0.033)
2018	2.784	(0.041)
5YR Strip	2.663	(0.013)

IN THE NEWS

Piedmont Natural Gas to build LNG storage in North Carolina—Kallanish Energy reported: Energy services company Piedmont Natural Gas on Friday announced plans to build and operate a \$250 million liquefied natural gas storage facility in Robeson County, North Carolina. The facility will help Piedmont Natural Gas continue providing customers with natural gas during peak

- **Piedmont Natural Gas to build LNG storage in North Carolina**
- **U.S. energy dominance continues with surge in drilled natural gas**

usage days, when extremely low temperatures create a higher-than-normal demand for natural gas, according to the company, a unit of Duke Energy. The 1 billion-cubic-foot (Bcf) storage facility will cover roughly 50 acres of a 685-acre piece of Piedmont-owned property. Construction is expected to begin in the summer of 2019, with an estimated completion date in the summer of 2021, Kallanish Energy reports. The project will be the fourth LNG facility Piedmont owns and operates. For more on this story visit [kallanishenergy.com](https://bit.ly/2L9Tcj5) or click <https://bit.ly/2L9Tcj5>

U.S. energy dominance continues with surge in drilled natural gas wells—Hellenic Shipping News reported: API today released its quarterly well completion report for the second quarter of 2018 showing a 265 percent increase in estimated exploratory gas well completions as compared to the second quarter of 2017. 'Today's report shows the continued growth and strength of U.S. energy production,' said API Chief Economist Dean Foreman. 'Right now, the U.S. production is supplying substantially all the growth in oil demand throughout the world. For this growth and dominance to continue, our energy infrastructure must keep pace with production especially in areas like the Permian Basin in Texas and the Bakken in North Dakota that have experienced major growth in natural gas and oil production. Promoting energy infrastructure is critical to ensuring that American consumers, workers and the environment can continue to benefit from increased U.S. energy production that has contributed to our economy and increased our national security.' For more on this story visit [hellenicshippingnews.com](https://bit.ly/2KZaSi0) or click <https://bit.ly/2KZaSi0>

12 MONTH CANDLESTICK (WEEKLY)



Prompt Natural Gas (NG) Daily Sentiment

BEARISH



RESISTANCE

2.79 & 2.83

SUPPORT

2.73 & 2.67

Trading Summary

NATURAL GAS

Futures	Close	Change
NG	2.752	(0.045)
Volume	410,819	(379,112)
Open Int.	1,508,502	12,334

CRUDE AND GASOLINE

Futures	Close	Change
Crude	71.01	0.68
RBOB	2.1067	0.0350
Crude/NG	25.80	0.66

METALS

Futures	Close	Change
Gold	1,239.60	4.20

EQUITIES

Exchange	Close	Change
DOW	25,019.41	94.52
S&P 500	-1,086.65	3.02

CURRENCY

Currency	Close	Change
EUR/USD	1.1710	0.0025
USD/CND	1.2405	(0.0016)

Contact Us



Mansfield Energy Corp

1025 Airport Pkwy
Gainesville, GA 30501

www.mansfield.energy

info@mansfieldoil.com

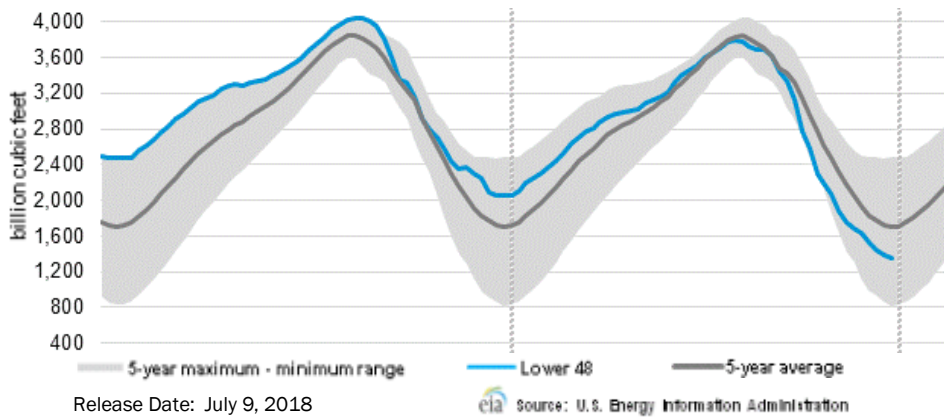
Phone: (800) 695-6626





NATURAL GAS NEWS

WEEKLY GAS IN UNDERGROUND STORAGE WITH 5-YR RANGE



Rig Count

Report Date: July 6, 2018

	Total	Change
US -	1052	+5
CN -	182	+10

EIA Weekly NG Storage Actual and Surveys for July 13, 2018

Released July 12, 2018

Range (41) to (70)

PIRA – (54)

Citi Futures – (57)

Reuters – (54)

EIA ACTUAL – 51

Total Working Gas In Storage

2,203 BCF

51 BCF (LAST WEEK)
 (725) BCF (LAST YEAR)
 (519) BCF (5-YR AVG)

U.S. Natural Gas Supply Gas Week 7/5– 7/11

Average daily values (BCF/D):

Last Year (BCF/d)

Dry Production – +81.1

Total Supply – +78.0

Last Week (BCF/d)

Dry Production – +81.3

Total Supply – +87.7

[NEXT REPORT ON Jul 20]

U.S. Natural Gas Demand Gas Week 7/5– /11

Average daily values (BCF/D):

Last Year (BCF/d)

Power – +33.7

Total Demand – +72.2

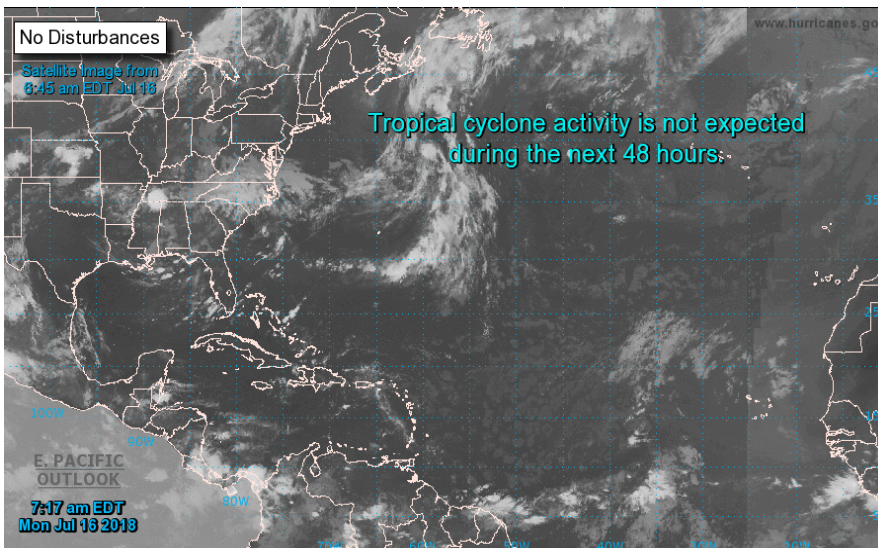
Last Week (BCF/d)

Power – +37.0

Total Demand – +77.8

[NEXT REPORT ON Jul 20]

TROPICAL STORM ACTIVITY– ATLANTIC

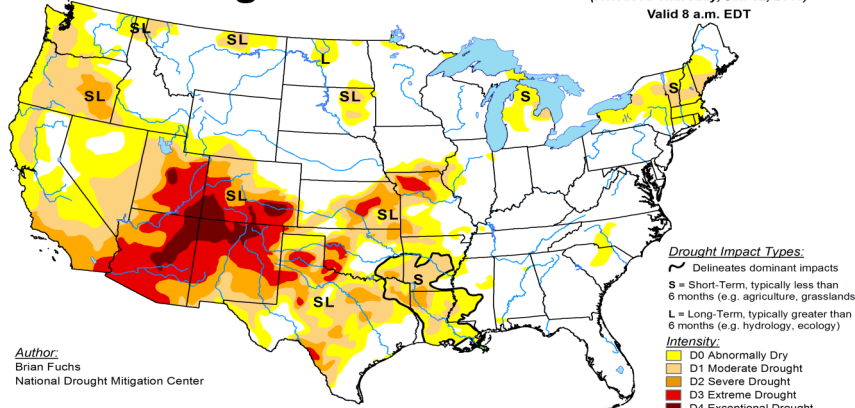


U.S. Drought Monitor

July 10, 2018

(Released Thursday, Jul. 12, 2018)

Valid 8 a.m. EDT



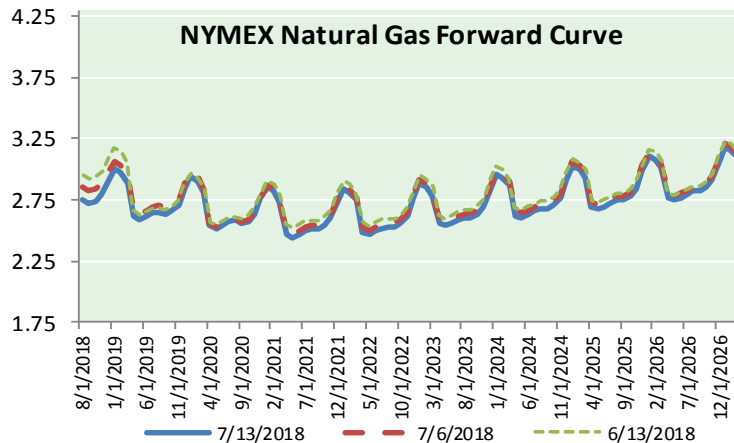
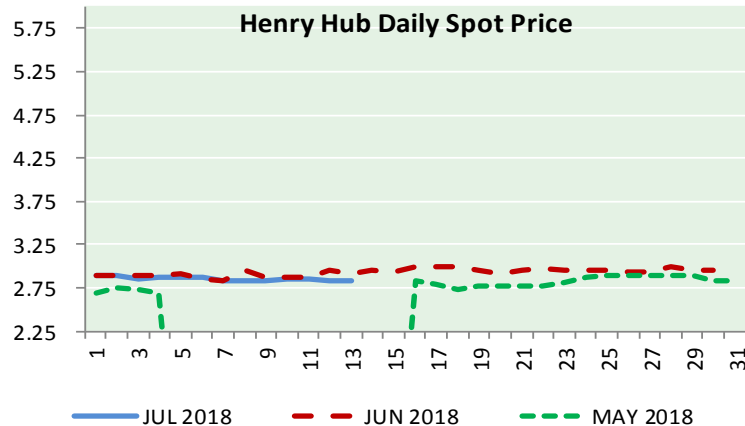
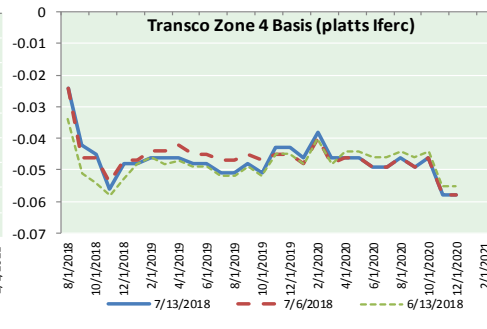
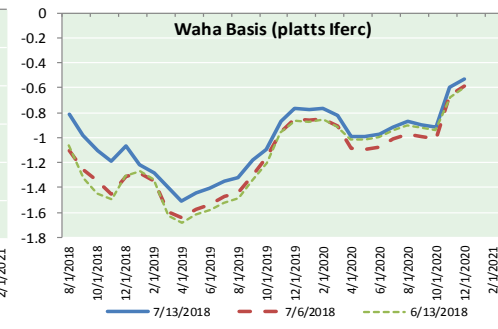
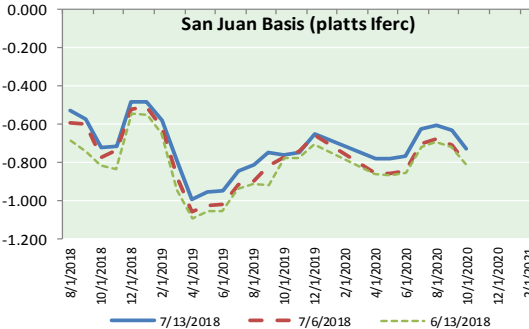
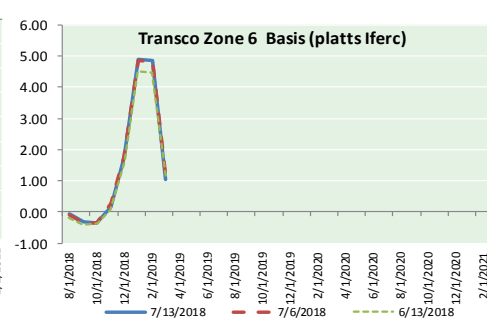
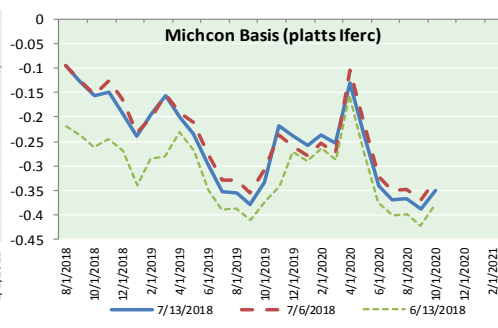
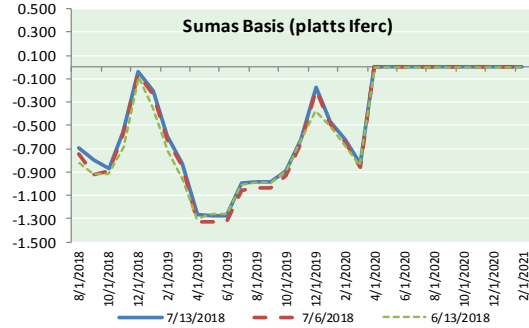
Author: Brian Fuchs, National Drought Mitigation Center



<http://droughtmonitor.unl.edu/>



NATURAL GAS BASIS FUTURES, HENRY HUB SPOT PRICES, AND FORWARD CURVE



NYMEX WTI Delivery

Month Average (\$/bbl)

(Excluding Weekends and Holidays)

Month: July 2018

Day	Price	Day	Price
1		16	
2	73.94	17	
3	74.14	18	
4		19	
5	72.94	20	
6	73.80	21	
7		22	
8		23	
9	73.85	24	
10	74.11	25	
11	70.38	26	
12	70.33	27	
13	71.01	28	
14		29	
15		30	
		31	

Average (Jul) 72.7222
(through 07/13/2018)

Average (Jun) 67.3229

Average (May) 69.9832

CME NG Option Prices

ATM Call

Month	Strike	Close	Imp	Vol
Sep-18				
Oct-18	2.750	0.063		18.7
Nov-18				
Dec-18				
Jan-19				

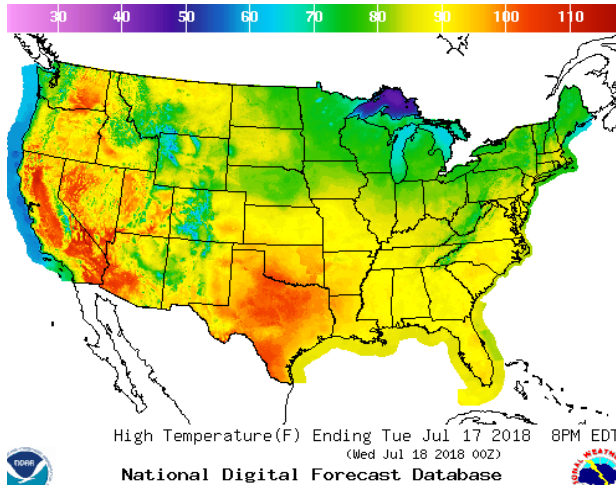
CME NG Option Prices

ATM Put

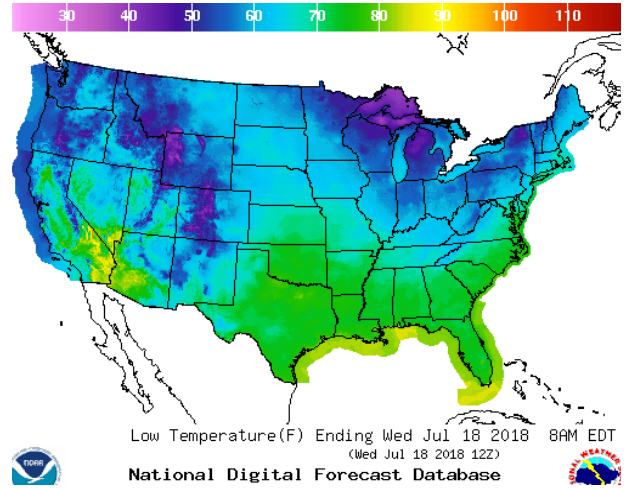
Month	Strike	Close	Imp	Vol
Sep-18				
Oct-18	2.750	0.094		22.5
Nov-18				
Dec-18				
Jan-19				

WEATHER – HIGH / LOW TEMPERATURE TOMORROW

HIGH Temperature

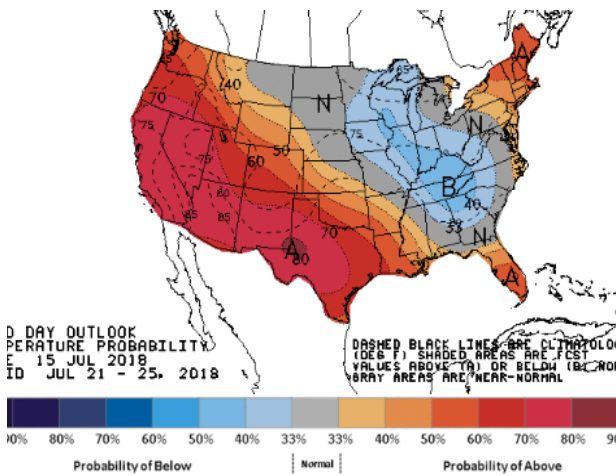


LOW Temperature

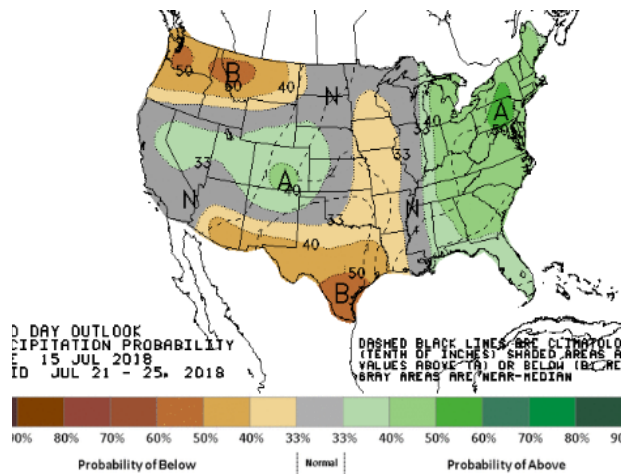


WEATHER – 6 TO 10 DAY OUTLOOK – NOAA

Temperature

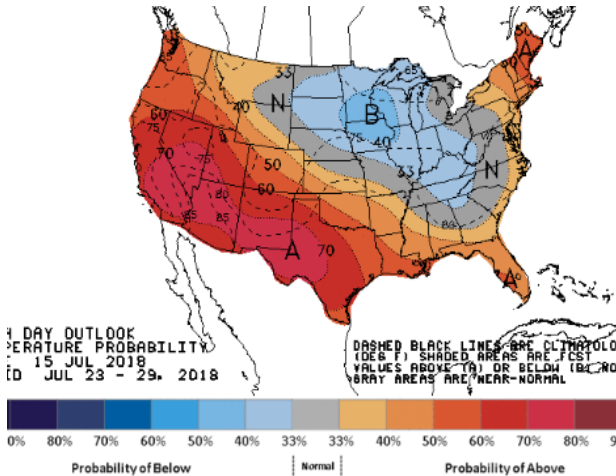


Precipitation

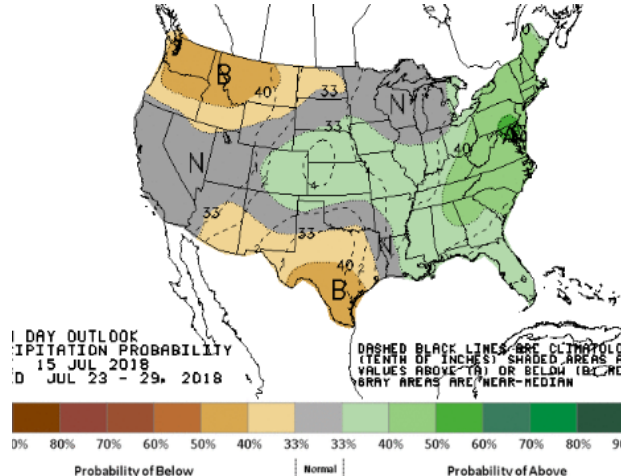


WEATHER – 8 TO 14 DAY OUTLOOK – NOAA

Temperature



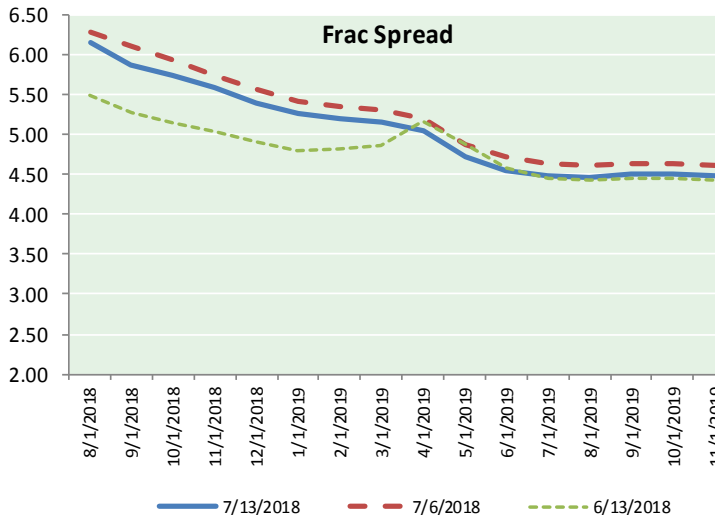
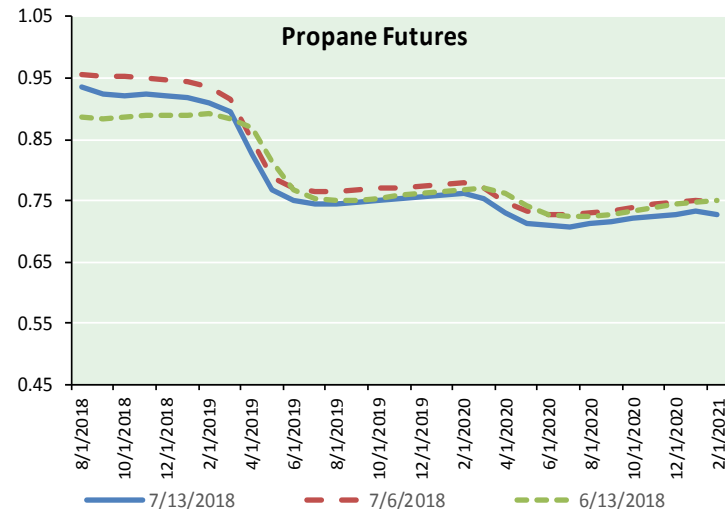
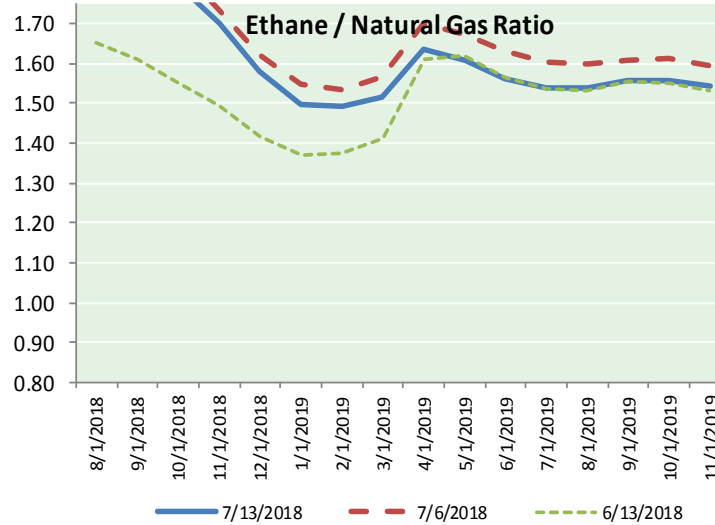
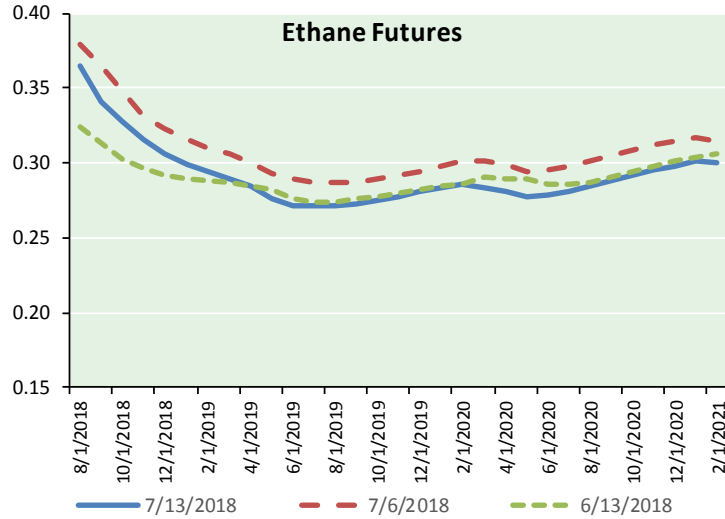
Precipitation



NATURAL GAS NEWS



ETHANE FUTURES, NG/ETHANE RATIO, PROPANE FUTURES, AND THE FRAC SPREAD



CME Future Prices

Ethane (C2)

Non-LDH— Mont Belvieu

Month	Close	Change
Aug-18	0.365	(0.005)
Sep-18	0.341	(0.009)
Oct-18	0.328	(0.006)
Nov-18	0.316	(0.004)
Dec-18	0.306	(0.003)
Jan-19	0.299	(0.002)
Feb-19	0.294	(0.002)
Mar-19	0.290	(0.003)
Apr-19	0.284	(0.004)
May-19	0.276	(0.003)
Jun-19	0.272	(0.002)
Jul-19	0.271	(0.002)

1YR Strip 0.303 (0.004)

CME Future Prices

Propane (C3)

Non-LDH— Mont Belvieu

Month	Close	Change
Aug-18	0.936	(0.003)
Sep-18	0.923	(0.004)
Oct-18	0.923	(0.004)
Nov-18	0.923	(0.002)
Dec-18	0.921	(0.002)
Jan-19	0.919	(0.002)
Feb-19	0.910	(0.001)
Mar-19	0.894	(0.001)
Apr-19	0.827	(0.001)
May-19	0.768	(0.002)
Jun-19	0.750	(0.000)
Jul-19	0.745	(0.000)

1YR Strip 0.870 (0.002)

NATURAL GAS NEWS



**Prompt WTI (CL) Crude
Daily Sentiment**

BULLISH



RESISTANCE
71.83 & 72.66
SUPPORT
70.01 & 69.02

FOLLOW US ON TWITTER:



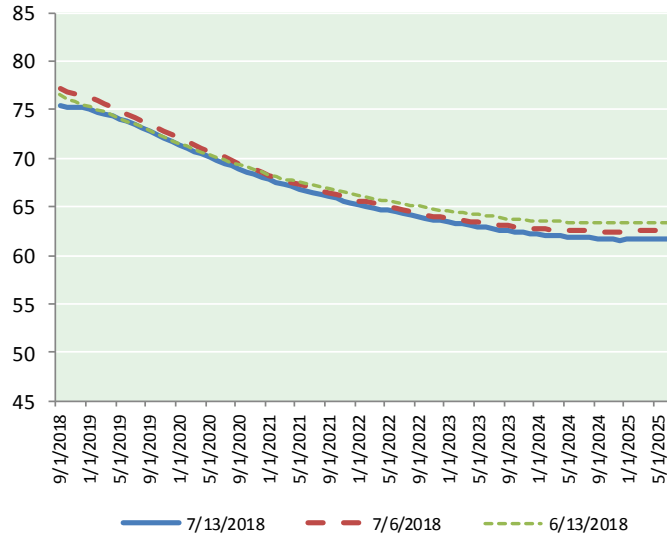
@MPG_NatGasNews

NYMEX Brent (BZ)

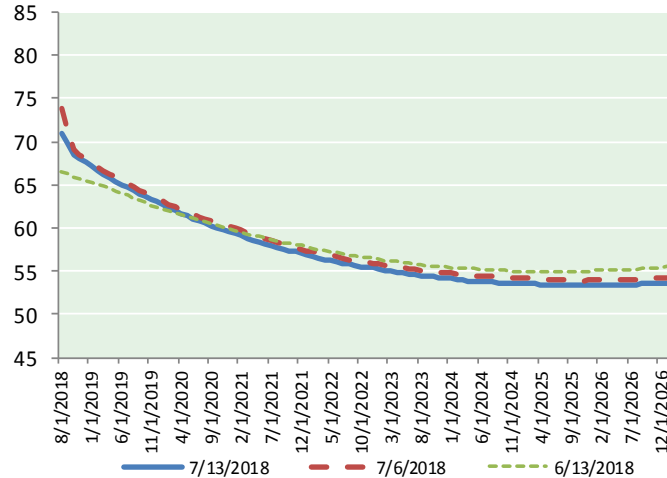
Futures

Month	Close	Change
Sep-18	75.33	0.88
Oct-18	75.26	0.82
Nov-18	75.23	0.77
Dec-18	75.15	0.71
Jan-19	74.99	0.66
Feb-19	74.78	0.63
Mar-19	74.55	0.60
Apr-19	74.33	0.58
May-19	74.07	0.57
Jun-19	73.75	0.55
Jul-19	73.43	0.52
Aug-19	73.09	0.49
Sep-19	72.73	0.46
Oct-19	72.37	0.43
Nov-19	72.04	0.41
Dec-19	71.67	0.40
Jan-20	71.34	0.37
Feb-20	71.04	0.34
Mar-20	70.72	0.31
Apr-20	70.40	0.27
May-20	70.10	0.24
Jun-20	69.80	0.21
Jul-20	69.50	0.16
Aug-20	69.20	0.11
1YR Strip	74.50	0.65
2018	75.24	0.80
5YR Strip	68.11	0.08

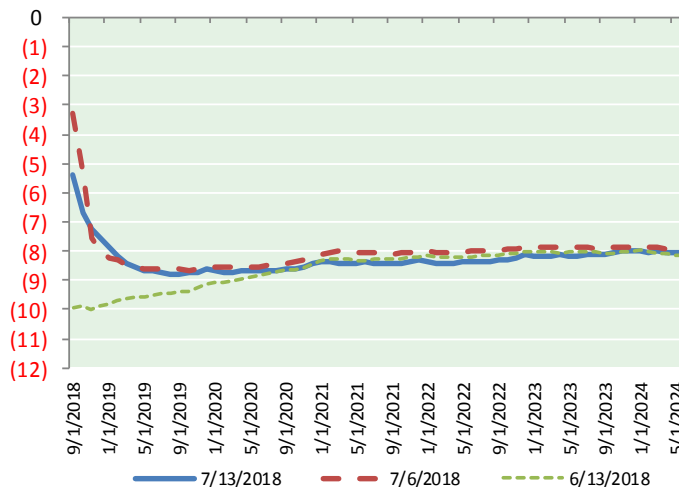
BRENT CRUDE FORWARD CURVE



WTI CRUDE FORWARD CURVE



WTI-BRENT SPREAD



FRAC Spread

Specifications

Ethane :	42%	66,500 btu/g
Propane:	28%	90,830 btu/g
Butane:	11%	102,916 btu/g
Iso-Butane:	6%	98,935 btu/g
Natural Gasoline:	13%	115,021 btu/g

Prompt NGL Futures

(\$/gallon)

Aug-18	Close	Change
Butane	1.185	0.003
Iso-Butane	1.214	(0.000)
Nat Gasoline	1.523	0.013

NYMEX WTI (CL) Futures

Month	Close	Change
Aug-18	71.01	0.68
Sep-18	69.95	0.60
Oct-18	68.55	0.48
Nov-18	68.01	0.57
Dec-18	67.58	0.62
Jan-19	67.15	0.65
Feb-19	66.62	0.67
Mar-19	66.15	0.67
Apr-19	65.76	0.68
May-19	65.40	0.66
Jun-19	65.07	0.63
Jul-19	64.69	0.61
Aug-19	64.32	0.58
Sep-19	63.96	0.55
Oct-19	63.64	0.52
Nov-19	63.33	0.49
Dec-19	63.03	0.46
Jan-20	62.67	0.43
Feb-20	62.33	0.39
Mar-20	62.01	0.37
Apr-20	61.70	0.34
May-20	61.41	0.31
Jun-20	61.12	0.28
Jul-20	60.82	0.26
1YR Strip	67.16	0.63
2018	69.02	0.59
5YR Strip	60.01	0.11