

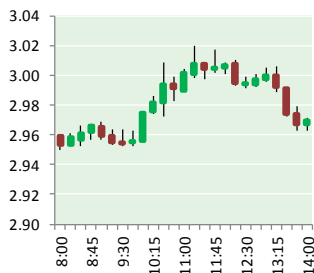
# NATURAL GAS



NEWS

JULY 14, 2017

## Prior Day's NYMEX Jul-17 Contract (CT)



## NYMEX NG Futures

Month	Close	Change
Aug-17	2.961	(0.024)
Sep-17	2.948	(0.027)
Oct-17	2.981	(0.025)
Nov-17	3.054	(0.023)
Dec-17	3.209	(0.021)
Jan-18	3.300	(0.019)
Feb-18	3.287	(0.017)
Mar-18	3.230	(0.014)
Apr-18	2.864	0.008
May-18	2.828	0.010
Jun-18	2.856	0.012
Jul-18	2.883	0.012
Aug-18	2.889	0.012
Sep-18	2.865	0.012
Oct-18	2.882	0.012
Nov-18	2.931	0.013
Dec-18	3.066	0.018
Jan-19	3.153	0.019
Feb-19	3.123	0.022
Mar-19	3.051	0.022
Apr-19	2.686	0.027
May-19	2.656	0.025
Jun-19	2.679	0.025
Jul-19	2.705	0.025
1YR Strip	3.033	(0.011)
2017	3.031	(0.024)
5YR Strip	2.875	0.012

## IN THE NEWS

PSC approves sale of Delta Natural Gas to PNG — Lane Report reports: The Kentucky Public Service Commission (PSC) has approved the sale of Delta Natural Gas Co. to PNG Companies LLC.

- PSC approves sale of Delta Natural Gas to PNG
- New studies reinforce importance of natural gas for clean energy future

Delta is headquartered in Winchester and serves about 39,000 customers in 23 counties in Eastern and Central Kentucky. It is the smallest of Kentucky's five major local natural gas distribution companies. PNG, which is based in Pittsburgh, distributes gas to about 700,000 customers through its systems in Pennsylvania, West Virginia and Kentucky. It currently operates People's Gas KY, a farm tap system serving 2,950 customers in 10 eastern Kentucky counties. In their joint application, Delta and PNG stated that the acquisition should lead to improvements in service as Delta gains access to technology already in use at PNG. As a much larger company, PNG's proven ability to attract investment capital should benefit Delta and its customers, the PSC said in today's order. For more on this story visit [lanereport.com](http://lanereport.com) or click <http://bit.ly/2vi0oOx>

New studies reinforce importance of natural gas for clean energy future – Penn Energy reports: The advent of more efficient and affordable clean energy in recent years has left natural gas with an unwarranted bad reputation. However, a series of new studies, led by research at the University of Texas, Austin, could help create greater public awareness around the surprising truth of this energy source: gas-fired energy is one of the most realistic hopes for a successful Clean Energy Plan moving forward. Because of these studies, many energy industry insiders are expecting a surge in gas-fired power generation and the creation of new technologies to support that growth. For more visit [pennenergy.com](http://pennenergy.com) or click the following link <http://bit.ly/2tO09wP>

## 12 MONTH CANDLESTICK (WEEKLY)



## Prompt Natural Gas (NG) Daily Sentiment BEARISH



RESISTANCE  
3.01 & 3.05  
SUPPORT  
2.93 & 2.90

## Trading Summary

### NATURAL GAS

Futures	Close	Change
NG	2.961	(0.024)
Volume	300,070	3,289
Open Int.	1,232,601	19,568

### CRUDE AND GASOLINE

Futures	Close	Change
Crude	46.08	0.59
RBOB	1.5261	0.0053
Crude/NG	15.56	0.32

### METALS

Futures	Close	Change
Gold	1,217.30	4.20

### EQUITIES

Exchange	Close	Change
DOW	21,553.09	20.95
S&P 500	2,294.62	(148.63)

### CURRENCY

Currency	Close	Change
EUR/USD	1.1444	(0.0012)
USD/CND	1.2728	0.0002

## Contact Us



**Mansfield Energy Corp**  
1025 Airport Pkwy  
Gainesville, GA 30501

[www.mansfield.energy](http://www.mansfield.energy)

[info@mansfieldoil.com](mailto:info@mansfieldoil.com)

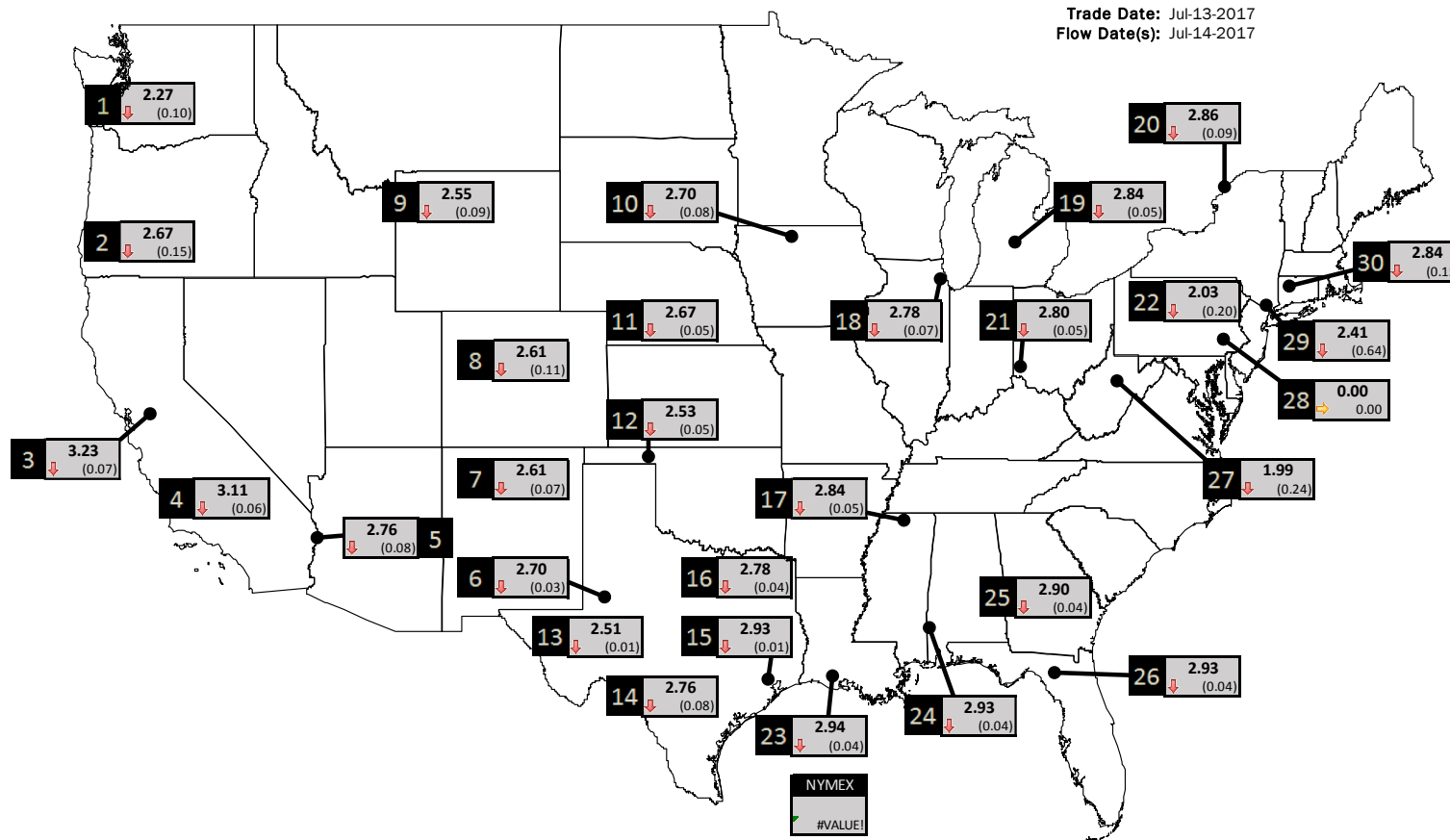
Phone: (800) 695-6626



# NATURAL GAS NEWS

## PHYSICAL SPOT NATURAL GAS PRICE MAP

Trade Date: Jul-13-2017  
Flow Date(s): Jul-14-2017



ID	DAILY INDEX	PRICE	CHANGE
1	Stanfield	2.27	(0.10)
2	Malin	2.67	(0.15)
3	PG&E - Citygate	3.23	(0.07)
4	SoCal-Citygate	3.11	(0.06)
5	SoCal Border	2.76	(0.08)
6	Waha	2.70	(0.03)
7	EPSJ Blanco Pool	2.61	(0.07)
8	Opal Plant Tailgate	2.61	(0.11)
9	NWP-Wyoming	2.55	(0.09)
10	Ventura	2.70	(0.08)

ID	DAILY INDEX	PRICE	CHANGE
11	NGPL-Midcont Pool	2.67	(0.05)
12	Panhandle	2.53	(0.05)
13	EP-Permian	2.51	(0.01)
14	TGP-ZO	2.76	(0.08)
15	Houston Ship Channel	2.93	(0.01)
16	NGPL-TXOK	2.78	(0.04)
17	TETCO-M1 30	2.84	(0.05)
18	Chicago Citygates	2.78	(0.07)
19	Michcon	2.84	(0.05)
20	Iroquois (into)	2.86	(0.09)

ID	DAILY INDEX	PRICE	CHANGE
21	REX E-ANR	2.80	(0.05)
22	Leidy-Transco	2.03	(0.20)
23	Henry	2.94	(0.04)
24	Transco-85	2.93	(0.04)
25	Sonat-ZO South	2.90	(0.04)
26	FGT-Z3	2.93	(0.04)
27	Dominion-South	1.99	(0.24)
28	Transco-Z6 (non-NY)	0.00	0.00
29	Transco-Z6 (NY)	2.41	(0.64)
30	Iroquois-Z2	2.84	(0.15)

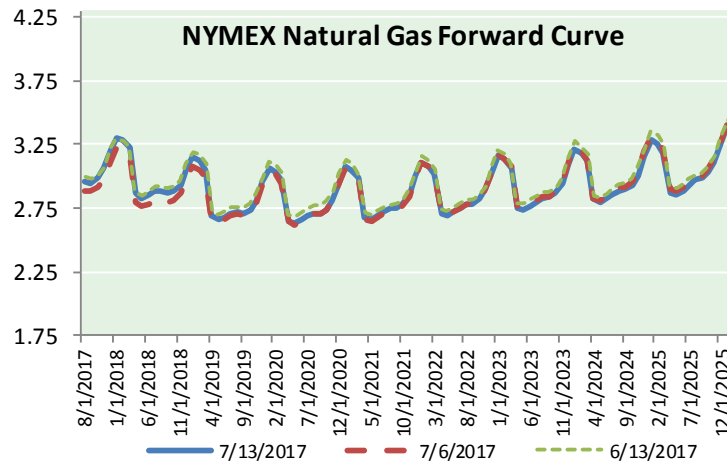
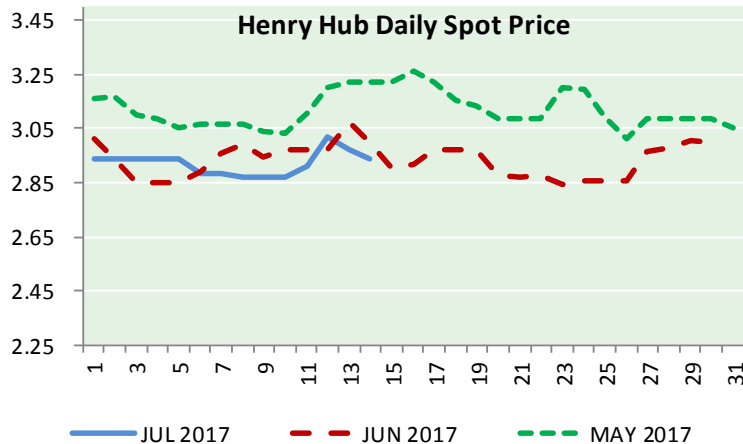
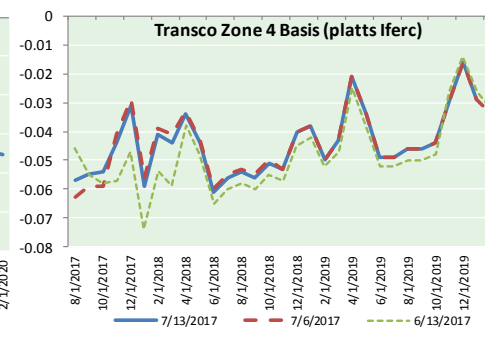
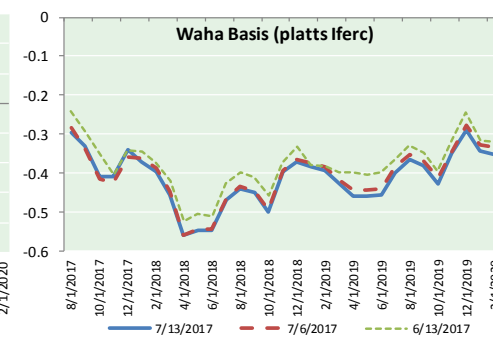
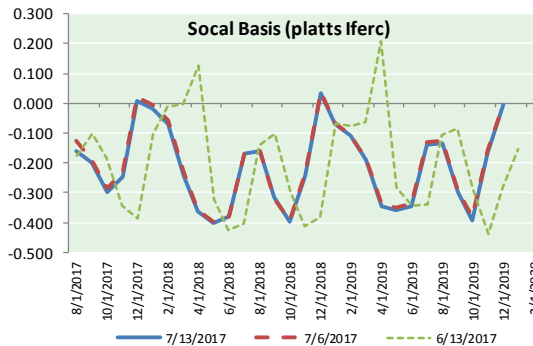
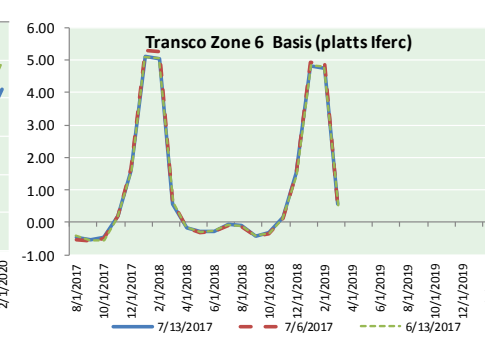
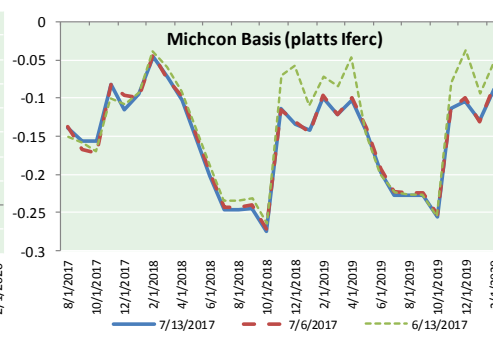
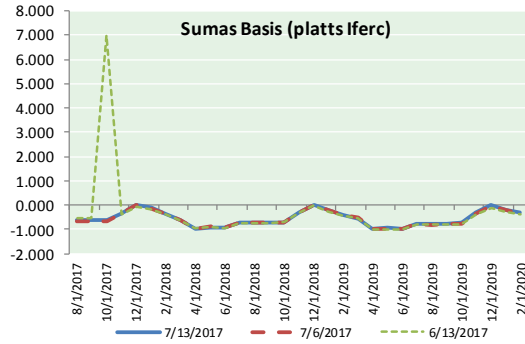
DISCLAIMER: The content herein is privileged and confidential. Content is presented for informational purposes and is a reflection of the market opinions of its authors subject to change without notice. Content is derived from sources believed to be accurate at the time of release but carries no guarantee of accuracy or completeness. Mansfield Energy Corp and its clients may or may not take positions similar or opposite those discussed herein. The reader should realize that the trading of commodities involves risk, and the reader assumes all responsibility for the risk of financial losses.





# NATURAL GAS NEWS

## NATURAL GAS BASIS FUTURES, HENRY HUB SPOT PRICES, AND FORWARD CURVE



### CME NG Option Prices

#### ATM Call

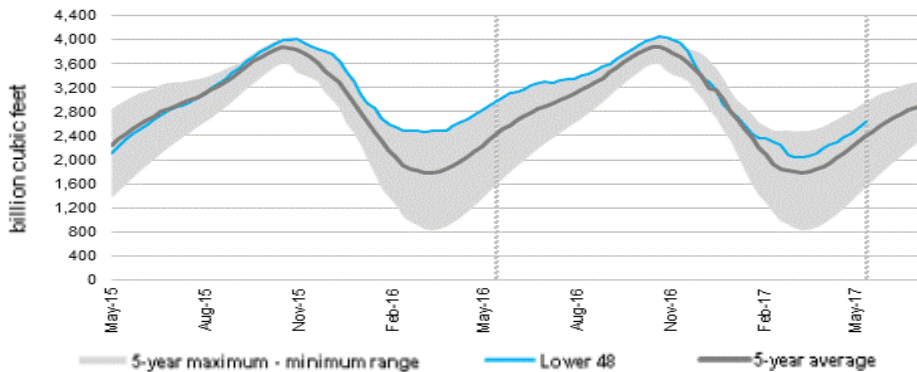
Month	Strike	Close	Imp Vol
Aug-17	2.950	0.081	37.5
Sep-17	2.950	0.142	35.6
Oct-17	2.950	0.192	33.7
Nov-17	3.050	0.220	33.7
Dec-17	3.200	0.270	33.7
Jan-18			
Feb-18			
Mar-18			
Apr-18			
May-18			
Jun-18			
Jul-18			
Aug-18			
Sep-18			
Oct-18			
Nov-18			
Dec-18			

### CME NG Option Prices

#### ATM Put

Month	Strike	Close	Imp Vol
Aug-17	2.950	0.072	33.7
Sep-17	2.950	0.139	31.9
Oct-17	2.950	0.160	31.9
Nov-17	3.050	0.209	31.9
Dec-17	3.200	0.261	33.7
Jan-18			
Feb-18			
Mar-18			
Apr-18			
May-18			
Jun-18			
Jul-18			
Aug-18			
Sep-18			
Oct-18			
Nov-18			
Dec-18			

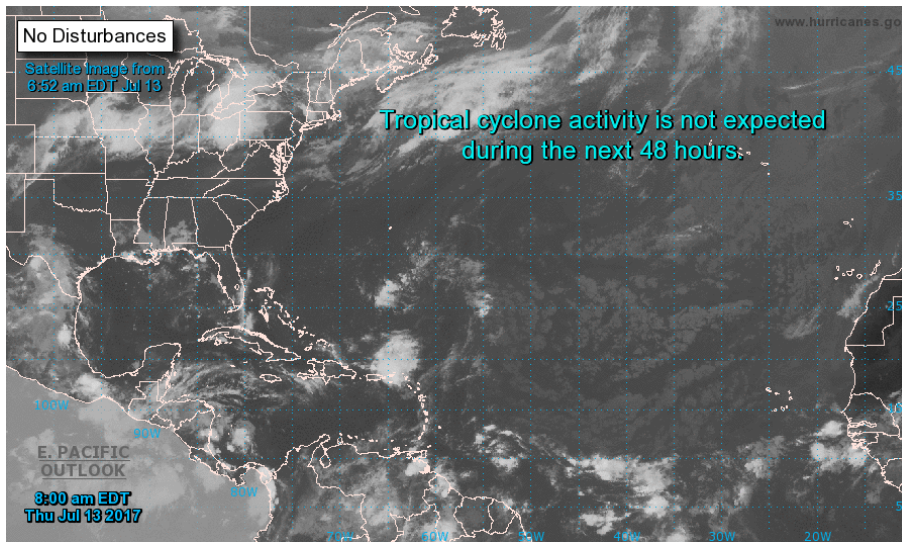
WEEKLY GAS IN UNDERGROUND STORAGE WITH 5-YR RANGE



Release Date: Jun 8, 2017

Source: U.S. Energy Information Administration

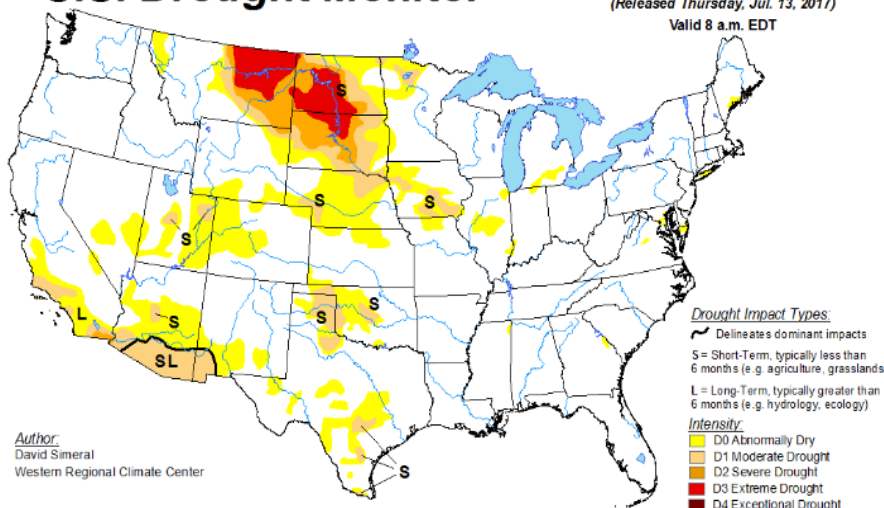
TROPICAL STORM ACTIVITY— ATLANTIC



U.S. DROUGHT MONITOR

U.S. Drought Monitor

July 11, 2017  
(Released Thursday, Jul. 13, 2017)  
Valid 8 a.m. EDT



Author: David Simeral, Western Regional Climate Center

Rig Count

Report Date: July 7, 2017

	Total	Change
US -	952	+12
CN -	175	(14)

EIA Weekly NG Storage Actual and Surveys for July 7, 2017

Released July 13, 2017

PIRA — +59  
Citi — +55  
Reuters — +65

EIA ACTUAL — +57

Total Working Gas In Storage

2,945 BCF

+57 BCF (LAST WEEK)  
(289) BCF (LAST YEAR)  
+172 BCF (5-YR AVG)

U.S. Natural Gas Supply Gas Week 6/29 - 7/5

Average daily values (BCF/D):

Last Year (BCF/d)

Dry Production — +71.4

Total Supply — +77.5

Last Week (BCF/d)

Dry Production — +72.4

Total Supply — +78.2

[NEXT REPORT ON JUL 13]

U.S. Natural Gas Demand Gas Week 6/29 - 7/5

Average daily values (BCF/D):

Last Year (BCF/d)

Power — +35.4

Total Demand — +72.7

Last Week (BCF/d)

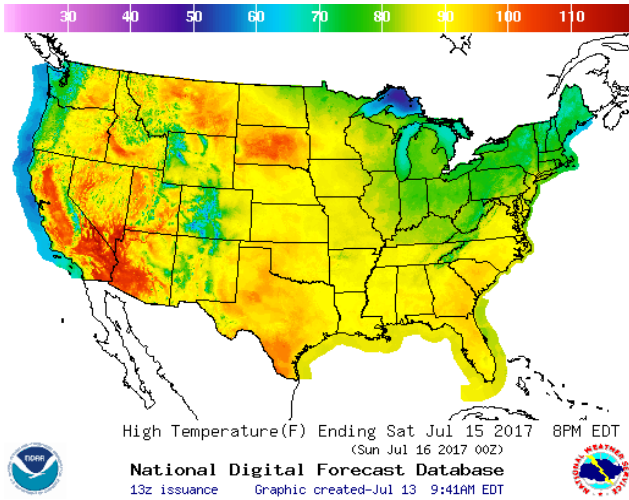
Power — +31.7

Total Demand — +69.8

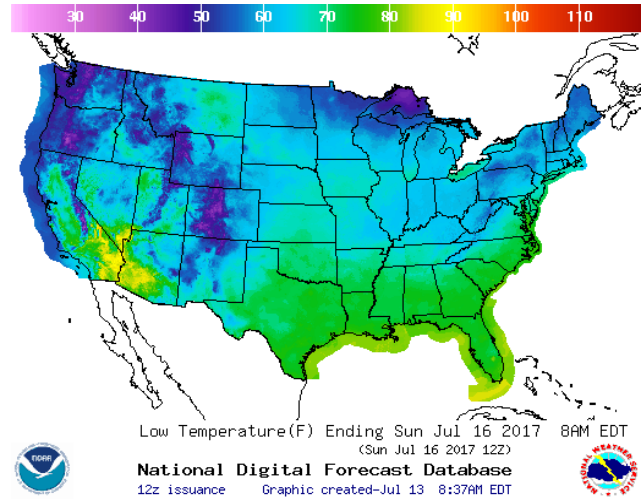
[NEXT REPORT ON JUL 13]

WEATHER – HIGH / LOW TEMPERATURE SATURDAY

HIGH Temperature

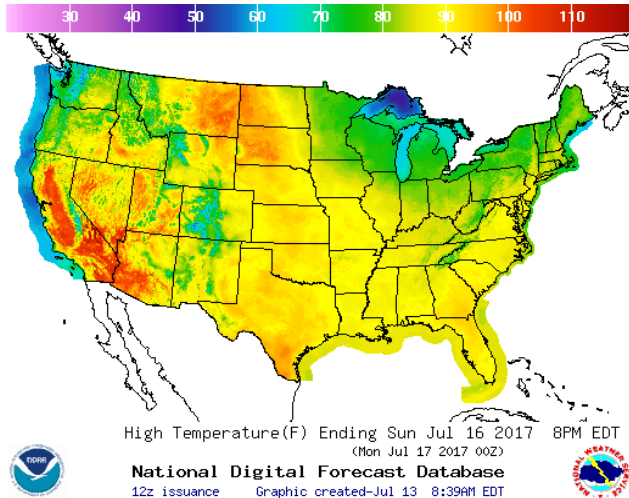


LOW Temperature

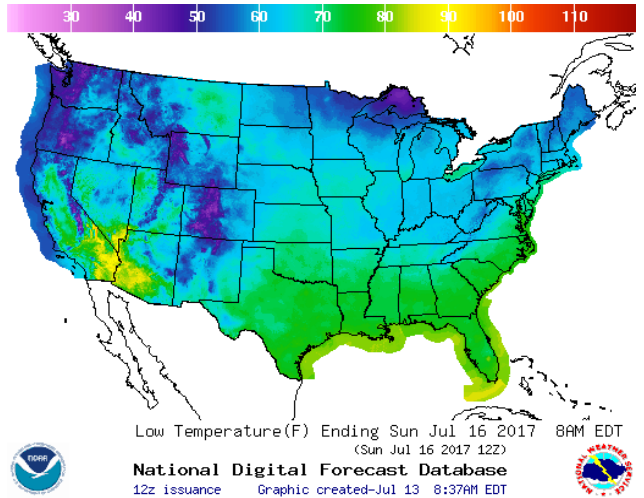


WEATHER – HIGH / LOW TEMPERATURE SUNDAY

HIGH Temperature

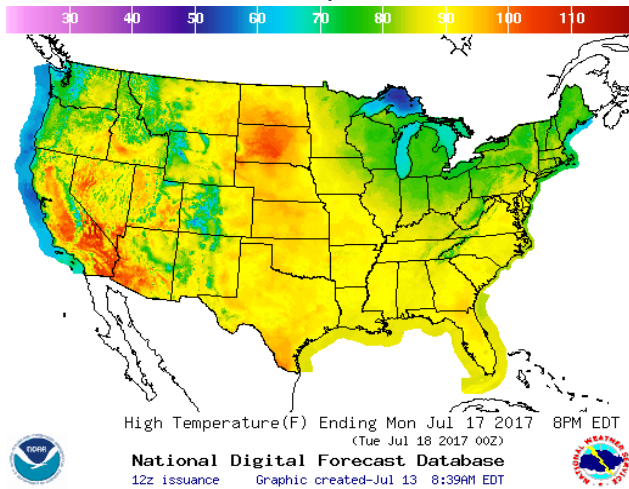


LOW Temperature

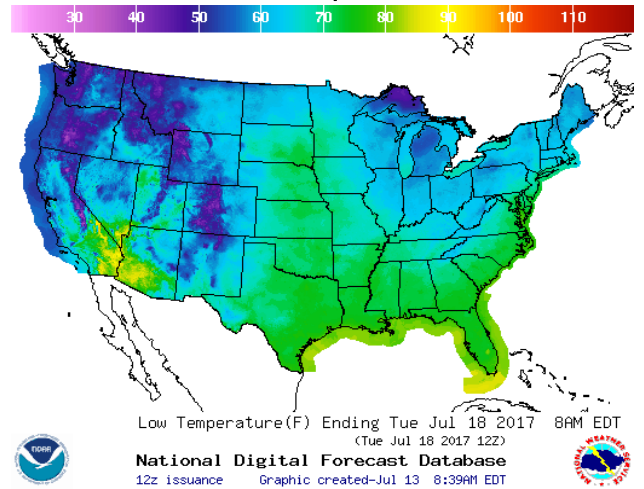


WEATHER – HIGH / LOW TEMPERATURE MONDAY

HIGH Temperature

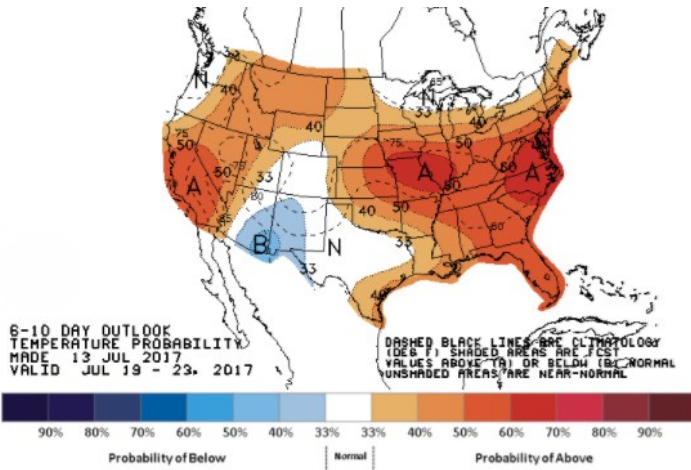


LOW Temperature

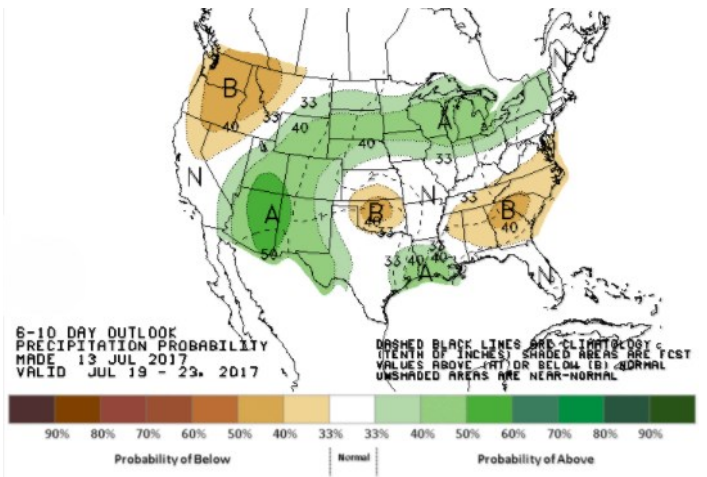


NATURAL GAS NEWS

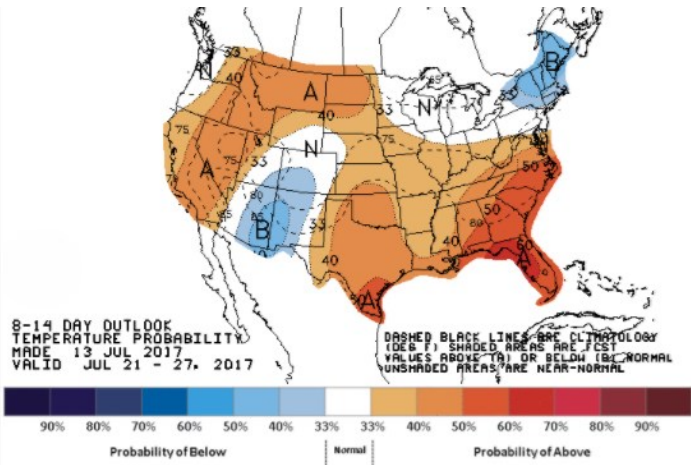
WEATHER — 6 TO 10 DAY OUTLOOK — NOAA  
Temperature



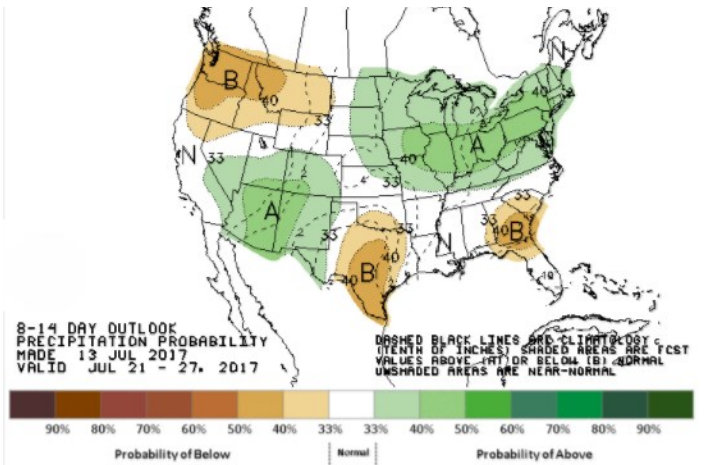
Precipitation



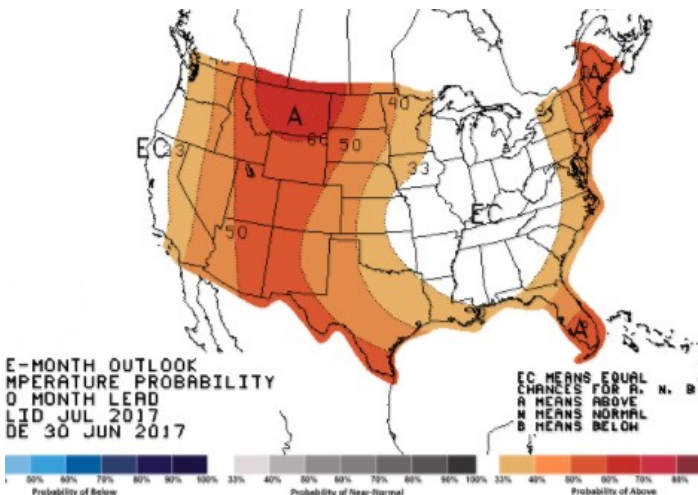
WEATHER — 8 TO 14 DAY OUTLOOK — NOAA  
Temperature



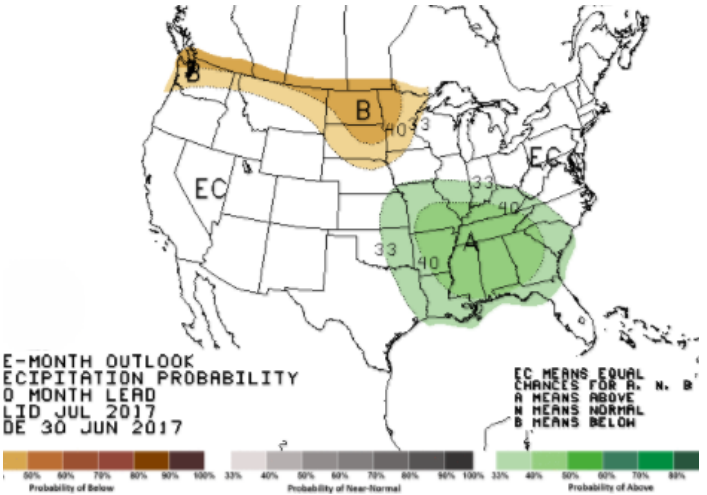
Precipitation



WEATHER — 30 DAY OUTLOOK — NOAA  
Temperature

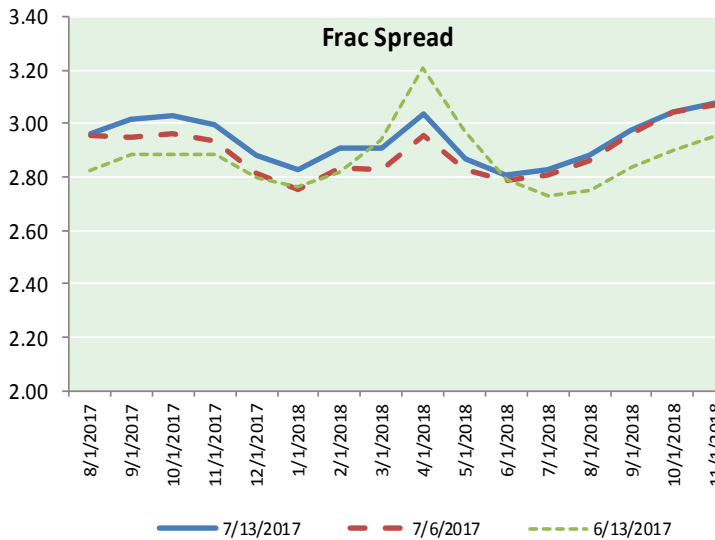
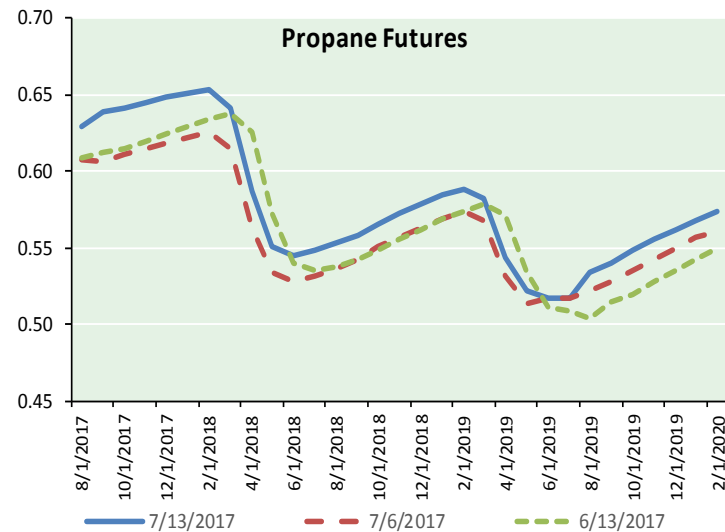
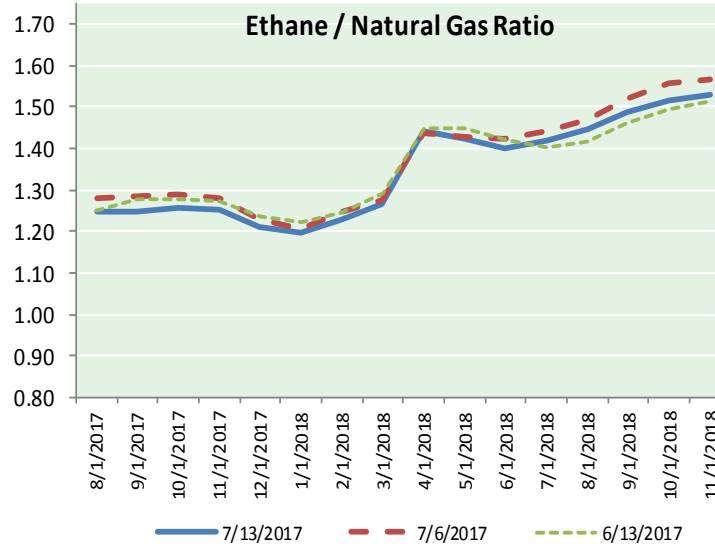
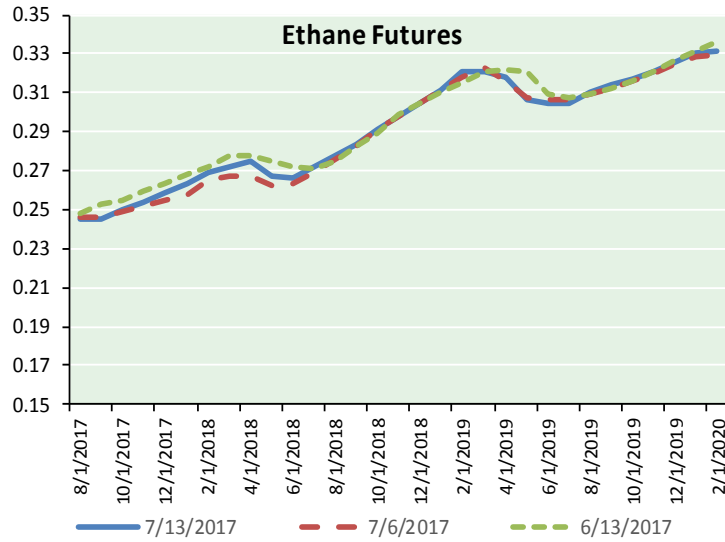


Precipitation





ETHANE FUTURES, NG/ETHANE RATIO, PROPANE FUTURES, AND THE FRAC SPREAD



CME Future Prices

Ethane (C2)

Non-LDH— Mont Belvieu

Month	Close	Change
Aug-17	0.246	0.000
Sep-17	0.245	(0.001)
Oct-17	0.250	(0.002)
Nov-17	0.254	(0.002)
Dec-17	0.258	(0.002)
Jan-18	0.263	(0.002)
Feb-18	0.269	(0.002)
Mar-18	0.272	(0.001)
Apr-18	0.275	(0.001)
May-18	0.267	(0.001)
Jun-18	0.266	(0.003)
Jul-18	0.272	(0.003)

1YR Strip 0.261 (0.002)

CME Future Prices

Propane (C3)

Non-LDH— Mont Belvieu

Month	Close	Change
Aug-17	0.630	0.002
Sep-17	0.639	0.004
Oct-17	0.642	0.003
Nov-17	0.646	0.004
Dec-17	0.649	0.004
Jan-18	0.651	0.004
Feb-18	0.654	0.004
Mar-18	0.641	0.004
Apr-18	0.587	0.005
May-18	0.551	0.002
Jun-18	0.546	0.002
Jul-18	0.548	0.001

1YR Strip 0.615 0.003

# NATURAL GAS NEWS



**Prompt WTI (CL) Crude**  
**Daily Sentiment**  
**BEARISH**



RESISTANCE  
 46.58 & 47.07  
 SUPPORT  
 45.29 & 44.49

**FOLLOW US ON TWITTER:**



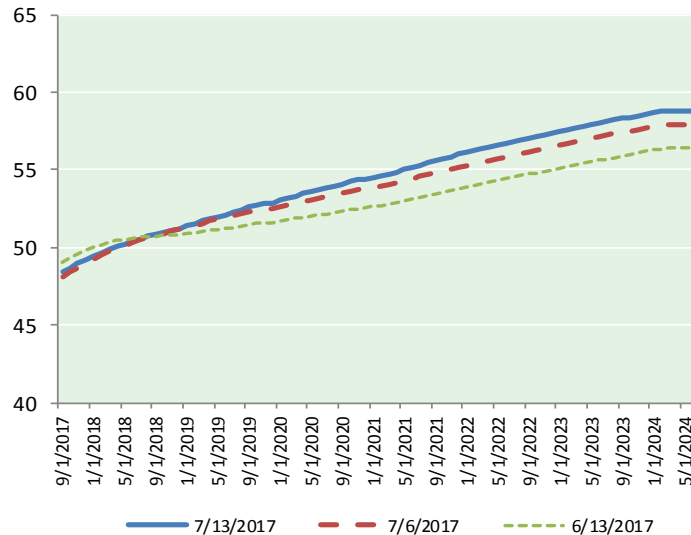
@MPG\_NatGasNews

## NYMEX Brent (BZ)

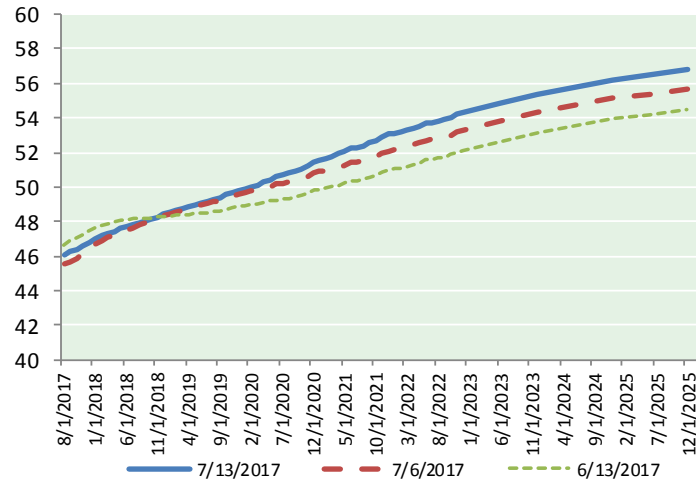
### Futures

Month	Close	Change
Sep-17	48.42	0.68
Oct-17	48.68	0.65
Nov-17	48.96	0.62
Dec-17	49.23	0.60
Jan-18	49.46	0.56
Feb-18	49.68	0.54
Mar-18	49.87	0.52
Apr-18	50.05	0.49
May-18	50.23	0.47
Jun-18	50.39	0.45
Jul-18	50.58	0.44
Aug-18	50.75	0.43
Sep-18	50.88	0.41
Oct-18	51.00	0.40
Nov-18	51.12	0.39
Dec-18	51.24	0.38
Jan-19	51.37	0.37
Feb-19	51.53	0.37
Mar-19	51.69	0.37
Apr-19	51.87	0.36
May-19	52.00	0.35
Jun-19	52.11	0.35
Jul-19	52.29	0.35
Aug-19	52.44	0.34
1YR Strip	49.69	0.54
2017	48.82	0.64
5YR Strip	53.20	0.36

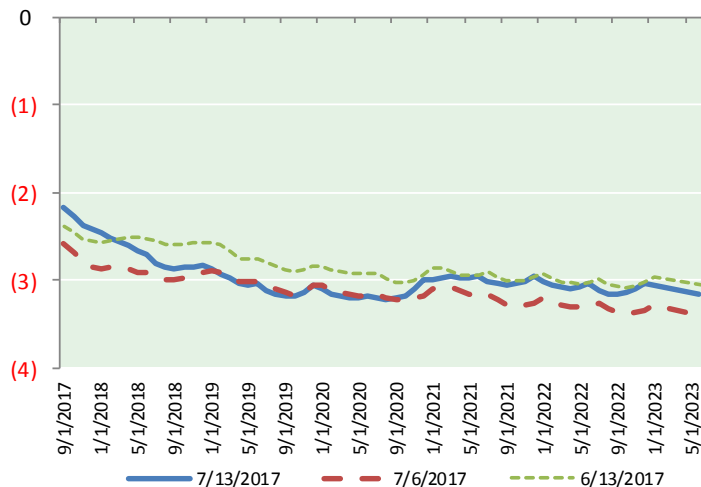
## BRENT CRUDE FORWARD CURVE



## WTI CRUDE FORWARD CURVE



## WTI-BRENT SPREAD



## FRAC Spread

### Specifications

Ethane : 42% 66,500 btu/g  
 Propane: 28% 90,830 btu/g  
 Butane: 11% 102,916 btu/g  
 Iso-Butane: 6% 98,935 btu/g  
 Natural Gasoline: 13%  
 115,021 btu/g

## Prompt NGL Futures

(\$/gallon)

Aug-17	Close	Change
Butane	0.763	0.004
Iso-Butane	0.757	0.005
Nat Gasoline	1.021	0.011

## NYMEX WTI (CL) Futures

Month	Close	Change
Aug-17	46.08	0.59
Sep-17	46.25	0.59
Oct-17	46.40	0.59
Nov-17	46.59	0.58
Dec-17	46.81	0.57
Jan-18	47.00	0.55
Feb-18	47.16	0.53
Mar-18	47.31	0.52
Apr-18	47.44	0.50
May-18	47.56	0.48
Jun-18	47.68	0.46
Jul-18	47.78	0.44
Aug-18	47.90	0.43
Sep-18	48.02	0.42
Oct-18	48.15	0.41
Nov-18	48.28	0.40
Dec-18	48.41	0.39
Jan-19	48.50	0.38
Feb-19	48.60	0.37
Mar-19	48.71	0.36
Apr-19	48.84	0.36
May-19	48.95	0.35
Jun-19	49.08	0.35
Jul-19	49.17	0.34
1YR Strip	47.01	0.53
2017	46.43	0.58
5YR Strip	50.11	0.39