

# NATURAL GAS



JULY 13, 2018

**Prior Day's NYMEX  
Jul-18 Contract (CT)**



**NYMEX NG Futures**

Month	Close	Change
Aug-18	2.797	(0.032)
Sep-18	2.766	(0.031)
Oct-18	2.780	(0.029)
Nov-18	2.832	(0.026)
Dec-18	2.949	(0.024)
Jan-19	3.033	(0.023)
Feb-19	3.000	(0.022)
Mar-19	2.906	(0.022)
Apr-19	2.635	(0.026)
May-19	2.607	(0.026)
Jun-19	2.637	(0.026)
Jul-19	2.668	(0.026)
Aug-19	2.675	(0.026)
Sep-19	2.657	(0.027)
Oct-19	2.675	(0.028)
Nov-19	2.729	(0.027)
Dec-19	2.860	(0.026)
Jan-20	2.956	(0.023)
Feb-20	2.918	(0.021)
Mar-20	2.823	(0.021)
Apr-20	2.544	(0.019)
May-20	2.511	(0.019)
Jun-20	2.543	(0.018)
Jul-20	2.576	(0.016)
1YR Strip	2.801	(0.026)
2018	2.825	(0.028)
5YR Strip	2.675	(0.013)

**IN THE NEWS**

\$550 million Texas natural gas project gets tax abatements from Nueces County— Chron reported: A \$550 million natural gas liquids separation project received eight years of tax abatements from Nueces County. The Houston company Permico Midstream Partners' Texas NGL Project includes a natural gas liquids fractionator that can process around 300,000 barrels of liquids a day

- **\$550 million Texas natural gas project gets tax abatements from Nueces County**
- **Clean energy is catching up to natural gas**

and separate them into their component parts, such as ethane, propane and butane. The facility would be connected to more than 500 miles of pipelines from the Permian Basin in West Texas to the Gulf Coast. Ethane is used in plastics production and as a petrochemical feedstock. The Nueces County commissioners court approved tax abatements that would be 100 percent for up to three years of construction and another five years of 70 percent tax abatements. For more on this story visit [chron.com](http://chron.com) or click <https://bit.ly/2mgmyOM>

Clean energy is catching up to natural gas—Vox reported: For around 10 years, the conventional wisdom in the energy sector has been that natural gas is ascendant. Coal is dirty, and it's getting expensive, but it's too early to jump all the way to renewable energy. To get from the fossil fuel present to the renewable future, we will need ... a bridge. Natural gas is meant to be that bridge, a way to reduce our emissions relative to coal while we work on scaling up renewables. (The shift from coal to gas is a big part of why US emissions have declined over the past few years.) In its role as a bridge, natural gas seems to have a comfortable future. First, it will replace coal and nuclear "baseload" plants, and then, as renewables grow to supply the bulk of power, it will provide flexibility, filling in the gaps where variable renewables (wind and solar) fall short. By playing these multiple roles, natural gas will long outlive coal and prove useful well into the latter half of the 21st century. It will enjoy a long, slow exit. Or so the story goes. For more on this story visit [vox.com](http://vox.com). or click <https://bit.ly/2KU1Z9h>

**12 MONTH CANDLESTICK (WEEKLY)**



**Prompt Natural Gas  
(NG) Daily Sentiment**

**BEARISH**



RESISTANCE  
2.82 & 2.84  
SUPPORT  
2.78 & 2.77

**Trading Summary**

**NATURAL GAS**

Futures	Close	Change
NG	2.797	(0.032)
Volume	353,927	(307,394)
Open Int.	1,497,177	9,027

**CRUDE AND GASOLINE**

Futures	Close	Change
Crude	70.33	(0.05)
RBOB	2.0717	0.0103
Crude/NG	25.14	0.27

**METALS**

Futures	Close	Change
Gold	1,245.00	2.00

**EQUITIES**

Exchange	Close	Change
DOW	24,925.19	224.74
S&P 500	-992.43	24.27

**CURRENCY**

Currency	Close	Change
EUR/USD	1.1641	(0.0031)
USD/CND	1.2405	0.0028

**Contact Us**



**Mansfield Energy Corp**  
1025 Airport Pkwy  
Gainesville, GA 30501  
[www.mansfield.energy](http://www.mansfield.energy)  
[info@mansfieldoil.com](mailto:info@mansfieldoil.com)

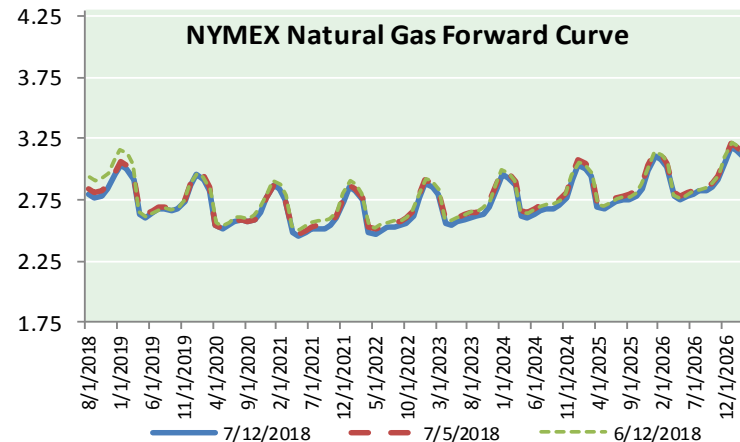
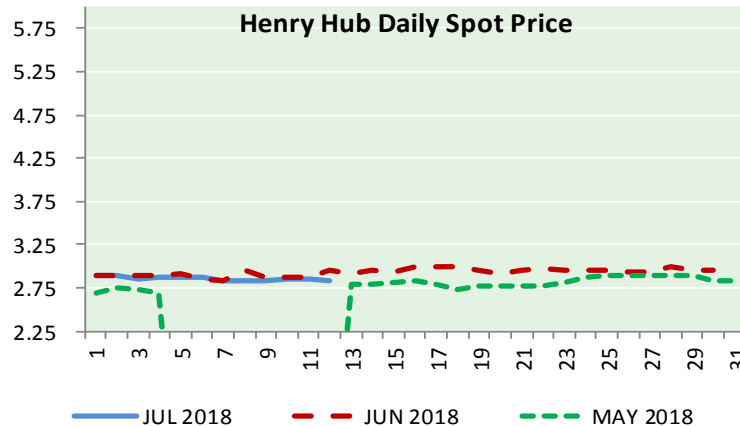
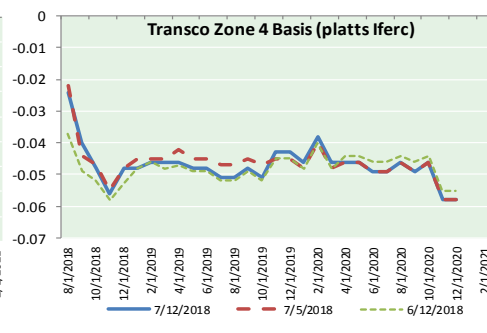
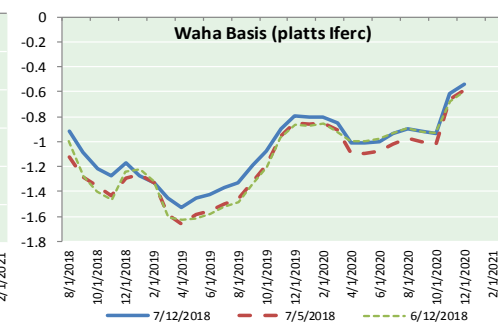
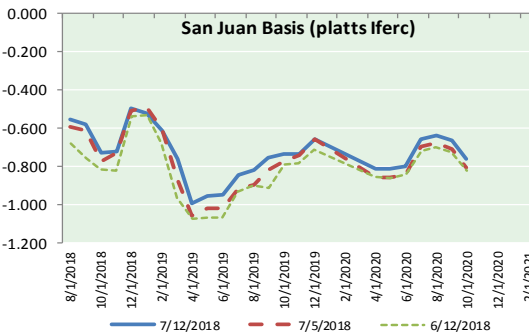
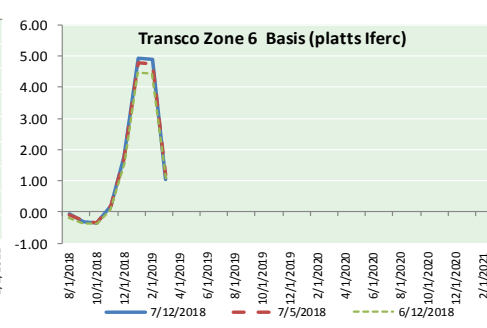
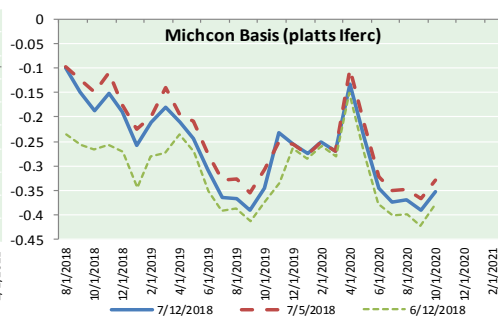
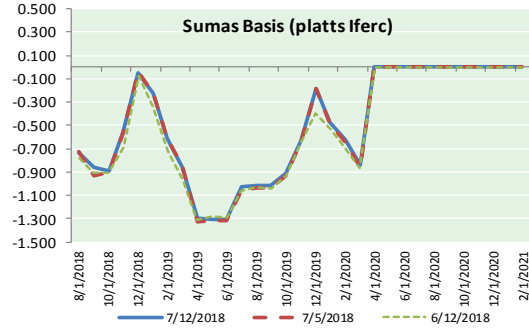
Phone: (800) 695-6626





**NATURAL GAS NEWS**

**NATURAL GAS BASIS FUTURES, HENRY HUB SPOT PRICES, AND FORWARD CURVE**



**NYMEX WTI Delivery**

**Month Average (\$/bbl)**

(Excluding Weekends and Holidays)

Month: July 2018

Day	Price	Day	Price
1		16	
2	73.94	17	
3	74.14	18	
4		19	
5	72.94	20	
6	73.80	21	
7		22	
8		23	
9	73.85	24	
10	74.11	25	
11	70.38	26	
12	70.33	27	
13		28	
14		29	
15		30	
		31	

**Average (Jul)** 72.9363  
(through 07/12/2018)

**Average (Jun)** 67.3229

**Average (May)** 69.9832

**CME NG Option Prices**

**ATM Call**

Month	Strike	Close	Imp	Vol
Sep-18				
Oct-18	2.750	0.088		22.5
Nov-18				
Dec-18				
Jan-19				

**CME NG Option Prices**

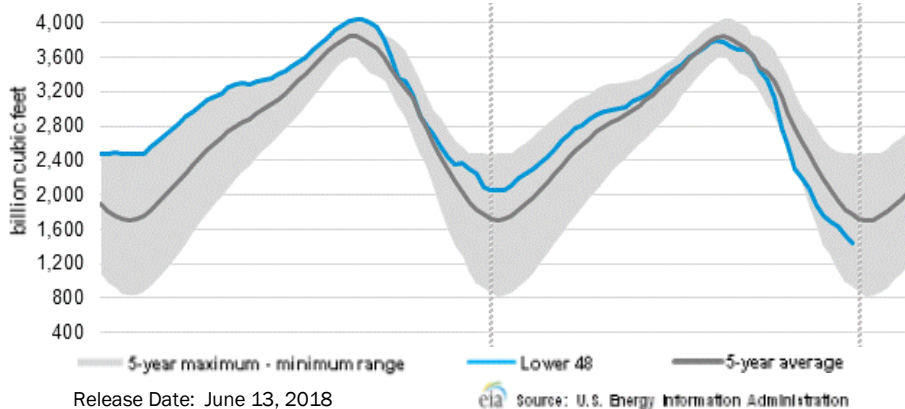
**ATM Put**

Month	Strike	Close	Imp	Vol
Sep-18				
Oct-18	2.750	0.081		20.6
Nov-18				
Dec-18				
Jan-19				



# NATURAL GAS NEWS

## WEEKLY GAS IN UNDERGROUND STORAGE WITH 5-YR RANGE



### Rig Count

Report Date: July 6, 2018

	Total	Change
US -	1052	+5
CN -	182	+10

### EIA Weekly NG Storage Actual and Surveys for July 13, 2018

Released July 12, 2018

Range (41) to (70)

PIRA – (54)

Citi Futures – (57)

Reuters – (54)

EIA ACTUAL – 51

### Total Working Gas In Storage

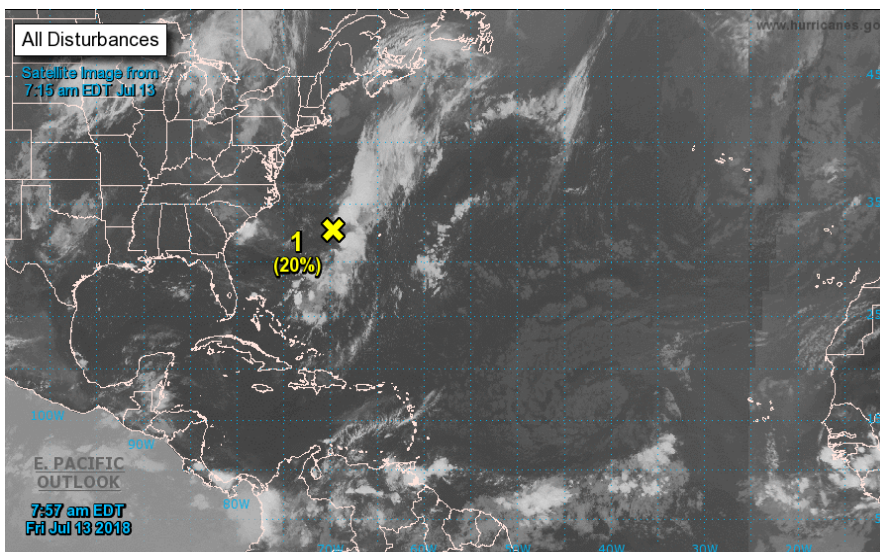
**2,203 BCF**

51 BCF (LAST WEEK)

(725) BCF (LAST YEAR)

(519) BCF (5-YR AVG)

## TROPICAL STORM ACTIVITY— ATLANTIC



Tropical Weather Outlook  
 NWS National Hurricane Center Miami FL  
 800 AM EDT Fri Jul 13 2018

For the North Atlantic...Caribbean Sea and the Gulf of Mexico:

1. An area of low pressure, associated with the remnants of Beryl, is located about 300 miles west of Bermuda. The associated shower and thunderstorm activity remains disorganized due to strong upper-level winds. These winds are expected to become even less conducive for subtropical or tropical development over the next day or two while the low moves north-northeastward at about 10 mph, and additional development will be limited once the low reaches colder waters by Saturday night or Sunday.

\* Formation chance through 48 hours...low...20 percent.

\* Formation chance through 5 days...low...20 percent.

Forecaster Berg

[NEXT REPORT ON Jul 20]

### U.S. Natural Gas Demand Gas Week 7/5– /11

Average daily values (BCF/D):

Last Year (BCF/d)

Power – +33.7

Total Demand – +72.2

Last Week (BCF/d)

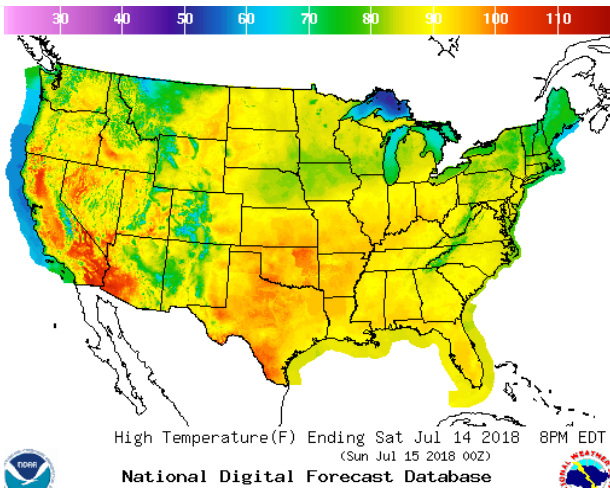
Power – +37.0

Total Demand – +77.8

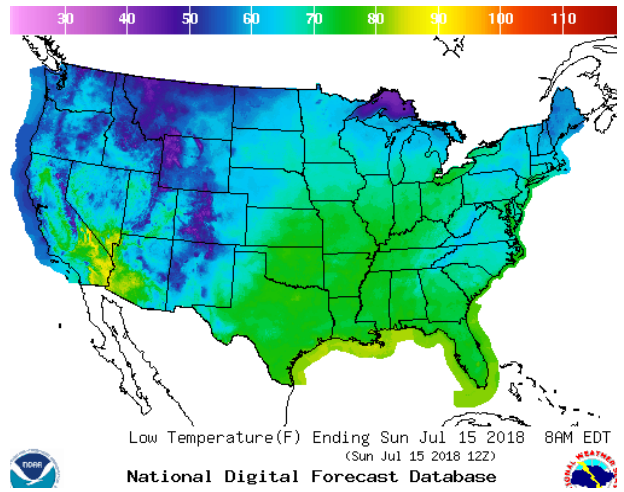
[NEXT REPORT ON Jul 20]

WEATHER – HIGH / LOW TEMPERATURE SATURDAY

HIGH Temperature

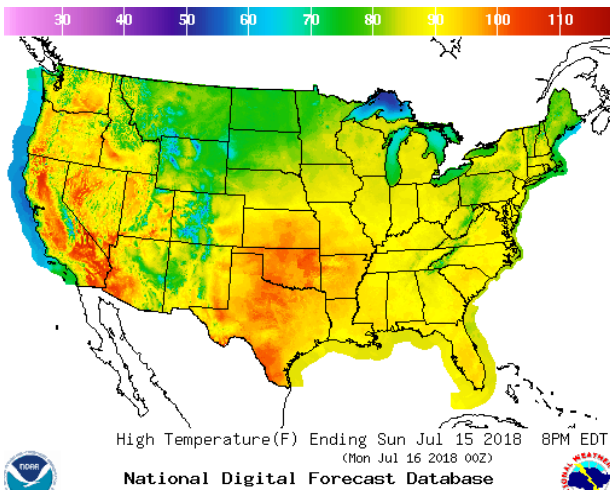


LOW Temperature

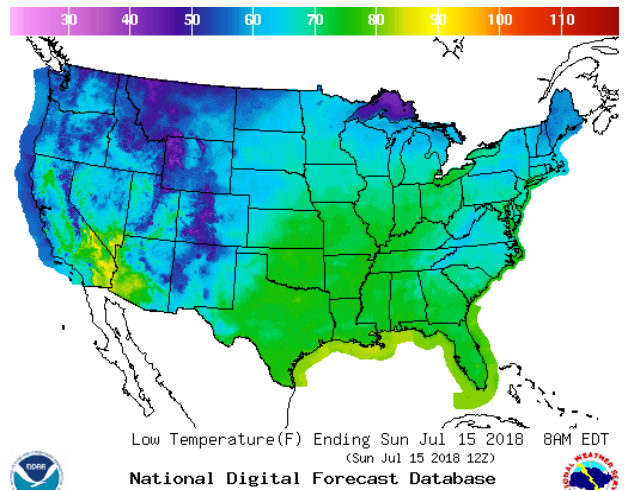


WEATHER – HIGH / LOW TEMPERATURE SUNDAY

HIGH Temperature

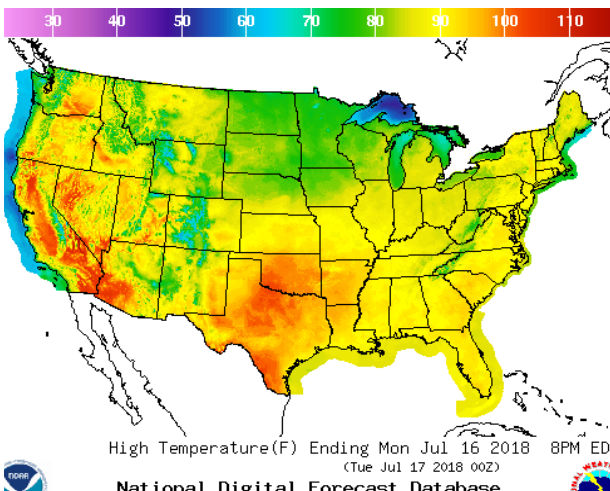


LOW Temperature

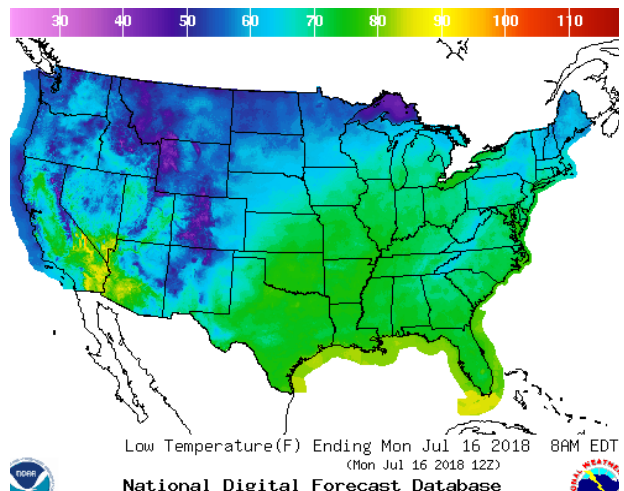


WEATHER – HIGH / LOW TEMPERATURE MONDAY

HIGH Temperature



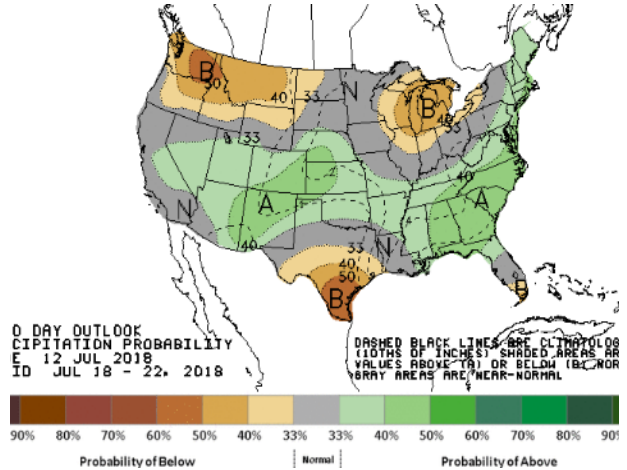
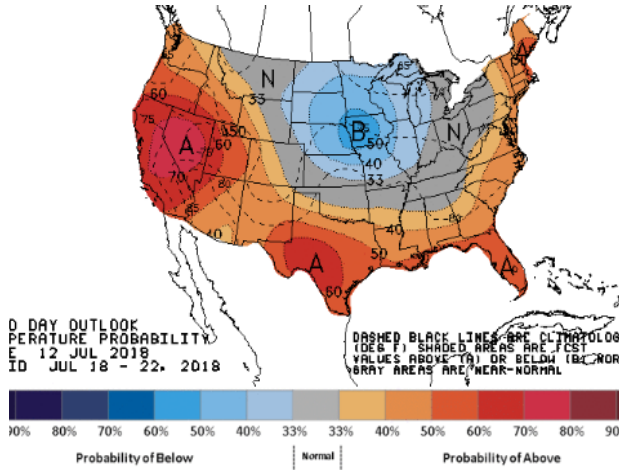
LOW Temperature



NATURAL GAS NEWS

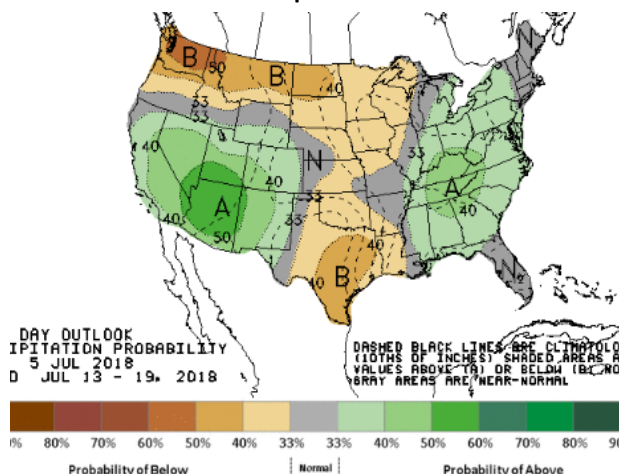
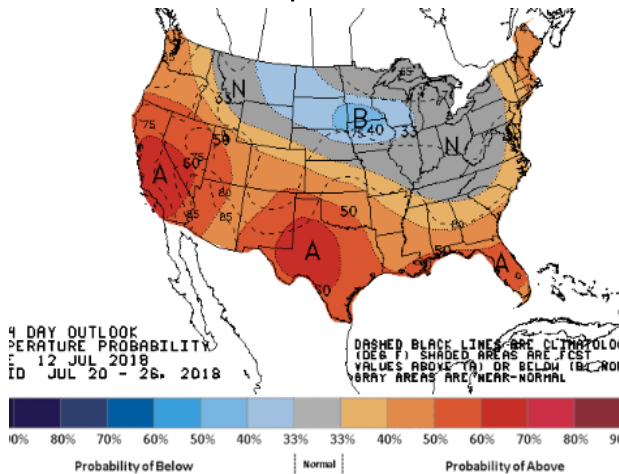
WEATHER — 6 TO 10 DAY OUTLOOK — NOAA  
Temperature

Precipitation



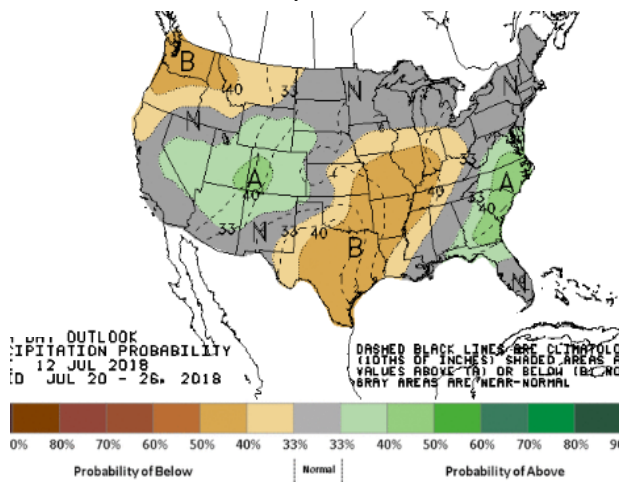
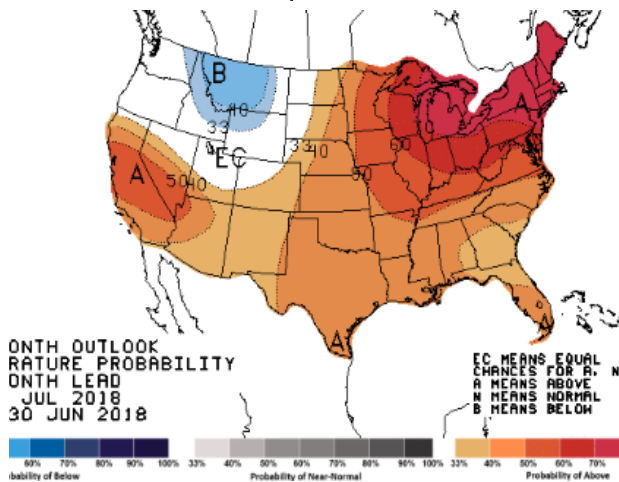
WEATHER — 8 TO 14 DAY OUTLOOK — NOAA  
Temperature

Precipitation



WEATHER — 30 DAY OUTLOOK — NOAA  
Temperature

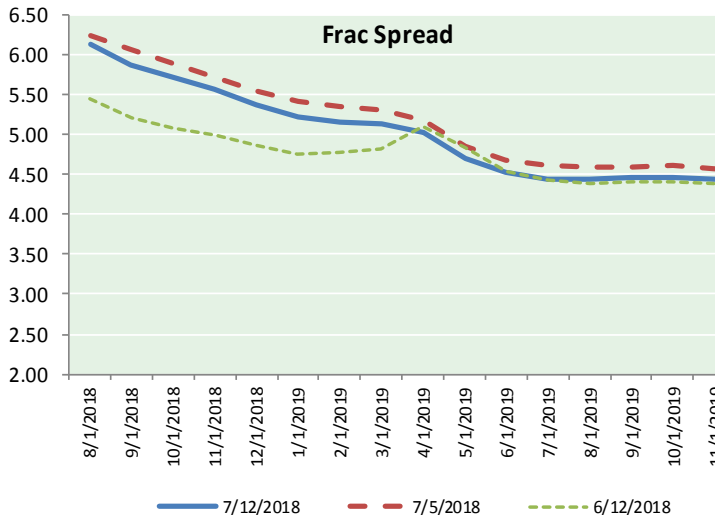
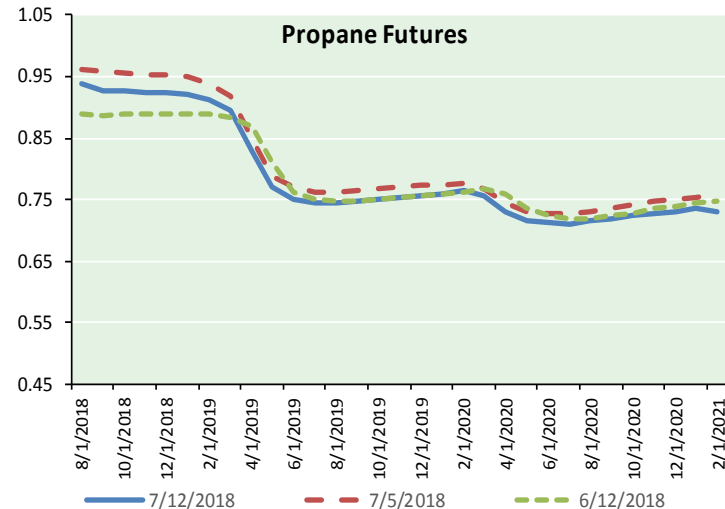
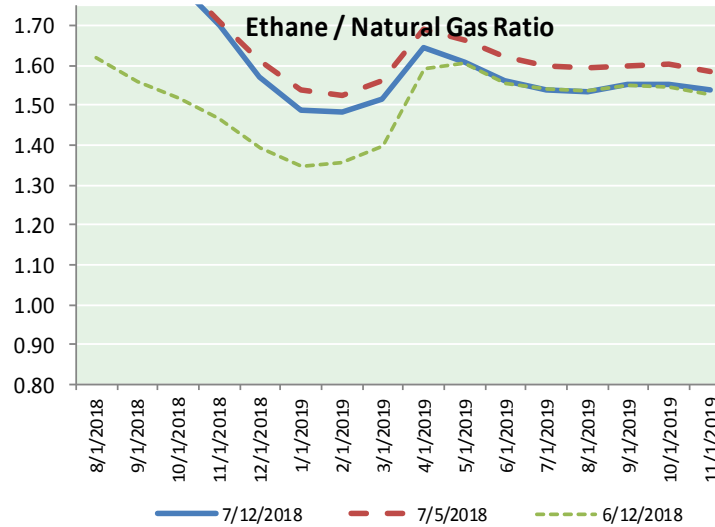
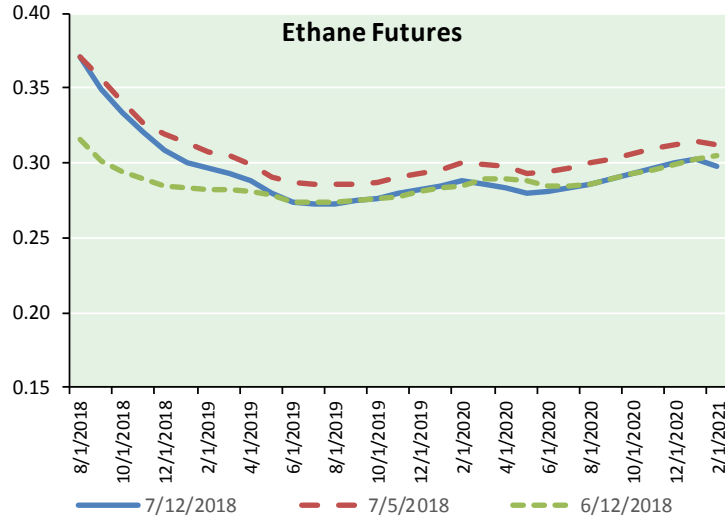
Precipitation



**NATURAL GAS NEWS**



**ETHANE FUTURES, NG/ETHANE RATIO, PROPANE FUTURES, AND THE FRAC SPREAD**



**CME Future Prices**

**Ethane (C2)**

**Non-LDH— Mont Belvieu**

Month	Close	Change
Aug-18	0.370	(0.006)
Sep-18	0.350	(0.009)
Oct-18	0.334	(0.010)
Nov-18	0.320	(0.009)
Dec-18	0.308	(0.009)
Jan-19	0.300	(0.009)
Feb-19	0.296	(0.008)
Mar-19	0.293	(0.008)
Apr-19	0.288	(0.008)
May-19	0.279	(0.008)
Jun-19	0.274	(0.009)
Jul-19	0.273	(0.008)

1YR Strip 0.307 (0.008)

**CME Future Prices**

**Propane (C3)**

**Non-LDH— Mont Belvieu**

Month	Close	Change
Aug-18	0.939	(0.007)
Sep-18	0.928	(0.011)
Oct-18	0.926	(0.011)
Nov-18	0.925	(0.010)
Dec-18	0.923	(0.009)
Jan-19	0.921	(0.009)
Feb-19	0.912	(0.008)
Mar-19	0.895	(0.007)
Apr-19	0.828	(0.006)
May-19	0.770	(0.005)
Jun-19	0.751	(0.006)
Jul-19	0.745	(0.006)

1YR Strip 0.872 (0.008)

**NATURAL GAS NEWS**



**Prompt WTI (CL) Crude  
Daily Sentiment**

**BULLISH**



RESISTANCE  
71.30 & 72.28  
SUPPORT  
69.29 & 68.26

**FOLLOW US ON TWITTER:**



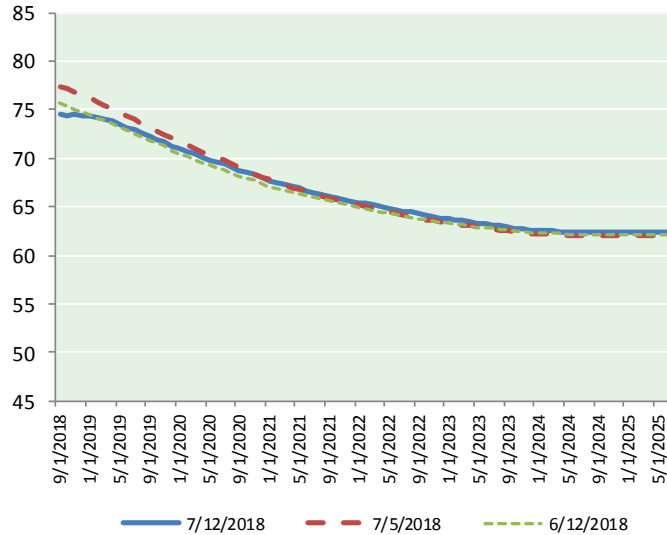
@MPG\_NatGasNews

**NYMEX Brent (BZ)**

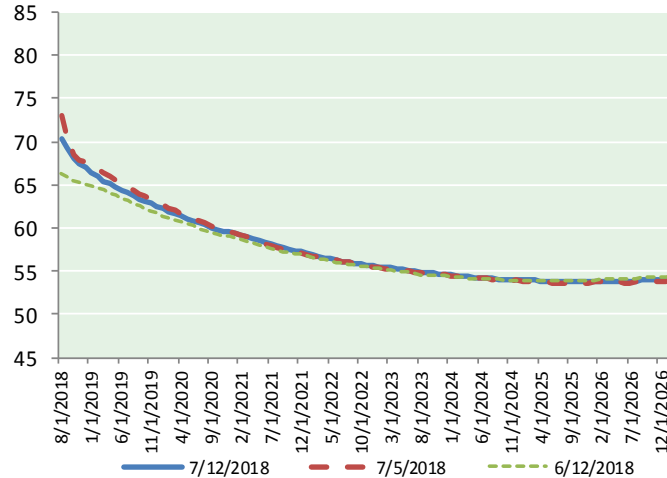
**Futures**

Month	Close	Change
Sep-18	74.45	1.05
Oct-18	74.44	1.11
Nov-18	74.46	1.15
Dec-18	74.44	1.18
Jan-19	74.33	1.18
Feb-19	74.15	1.18
Mar-19	73.95	1.18
Apr-19	73.75	1.17
May-19	73.50	1.16
Jun-19	73.20	1.13
Jul-19	72.91	1.12
Aug-19	72.60	1.10
Sep-19	72.27	1.08
Oct-19	71.94	1.06
Nov-19	71.63	1.05
Dec-19	71.27	1.03
Jan-20	70.97	1.02
Feb-20	70.70	1.01
Mar-20	70.41	1.01
Apr-20	70.13	1.01
May-20	69.86	1.00
Jun-20	69.59	0.98
Jul-20	69.34	0.98
Aug-20	69.09	0.97
1YR Strip	73.85	1.14
2018	74.45	1.12
5YR Strip	68.05	0.93

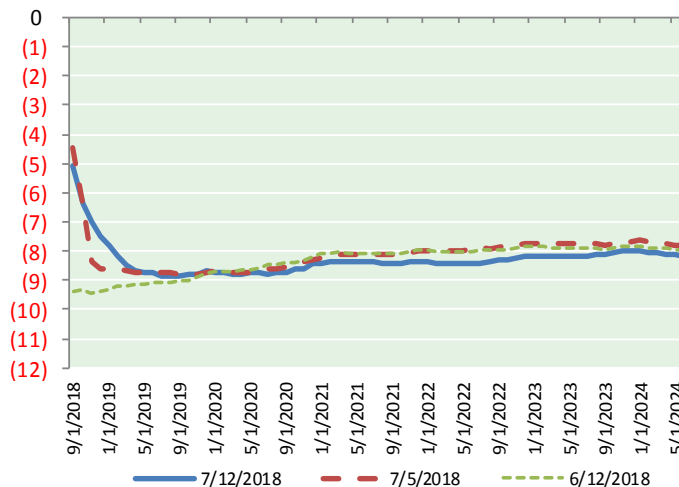
**BRENT CRUDE FORWARD CURVE**



**WTI CRUDE FORWARD CURVE**



**WTI-BRENT SPREAD**



**FRAC Spread**

**Specifications**

Ethane :	42%	66,500 btu/g
Propane:	28%	90,830 btu/g
Butane: 11%	102,916 btu/g	
Iso-Butane: 6%	98,935 btu/g	
Natural Gasoline: 13%		
		115,021 btu/g

**Prompt NGL Futures**

**(\$/gallon)**

Aug-18	Close	Change
Butane	1.182	(0.004)
Iso-Butane	1.214	(0.010)
Nat Gasoline	1.510	0.011

**NYMEX WTI (CL) Futures**

Month	Close	Change
Aug-18	70.33	(0.05)
Sep-18	69.35	0.49
Oct-18	68.07	0.97
Nov-18	67.44	1.11
Dec-18	66.96	1.21
Jan-19	66.50	1.26
Feb-19	65.95	1.28
Mar-19	65.48	1.27
Apr-19	65.08	1.24
May-19	64.74	1.22
Jun-19	64.44	1.21
Jul-19	64.08	1.20
Aug-19	63.74	1.19
Sep-19	63.41	1.16
Oct-19	63.12	1.14
Nov-19	62.84	1.10
Dec-19	62.57	1.07
Jan-20	62.24	1.04
Feb-20	61.94	1.03
Mar-20	61.64	1.00
Apr-20	61.36	0.96
May-20	61.10	0.94
Jun-20	60.84	0.93
Jul-20	60.56	0.92
1YR Strip	66.54	1.03
2018	68.43	0.75
5YR Strip	59.90	0.91