

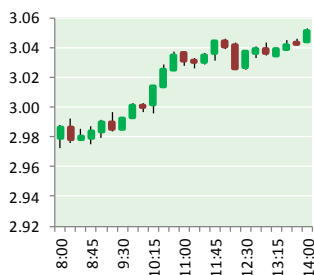
# NATURAL GAS



NEWS

JULY 12, 2017

## Prior Day's NYMEX Jul-17 Contract (CT)



## NYMEX NG Futures

Month	Close	Change
Aug-17	3.047	0.118
Sep-17	3.038	0.114
Oct-17	3.066	0.111
Nov-17	3.132	0.110
Dec-17	3.281	0.105
Jan-18	3.367	0.098
Feb-18	3.351	0.096
Mar-18	3.287	0.088
Apr-18	2.879	0.057
May-18	2.839	0.053
Jun-18	2.865	0.054
Jul-18	2.890	0.052
Aug-18	2.896	0.050
Sep-18	2.872	0.048
Oct-18	2.889	0.046
Nov-18	2.937	0.044
Dec-18	3.066	0.040
Jan-19	3.152	0.039
Feb-19	3.119	0.036
Mar-19	3.047	0.034
Apr-19	2.674	0.011
May-19	2.644	0.007
Jun-19	2.667	0.005
Jul-19	2.693	0.003
1YR Strip	3.087	0.088
2017	3.113	0.112
5YR Strip	2.882	0.025

## IN THE NEWS

The Largest Clean Coal Power Plant In America Turns To Natural Gas — Forbes reports: Last week, Southern Company and Mississippi Power announced that they would be turning their clean coal power plant project into a natural gas power plant. The company's Kemper County Power Plant in rural Mississippi was the

- **The Largest Clean Coal Power Plant In America Turns To Natural Gas**
- **U.S. natural gas futures extend rally as July heatwave spreads**

largest clean coal project in the United States. Kemper embodied the hope that coal could become a major part of a future clean energy mix, coupled with low-carbon sources like renewables and nuclear. But Kemper had construction delays and cost overruns, spending 7 years and 7 billion dollars trying to use coal in the plant, more than twice the projected costs. The Commission ordered the facility to use only natural gas and to stop the coal gasification part of the plant, unless they wanted to finance it themselves. For more on this story visit [forbes.com](http://forbes.com) or click the following link <http://bit.ly/2tFhdop>

U.S. natural gas futures extend rally as July heatwave spreads – Investing.com reports: U.S. natural gas futures rose sharply for the second day in a row on Tuesday, as updated weather forecasting models continued to point to increased summer demand in the coming weeks. U.S. natural gas for August delivery was at \$2.989 per million British thermal units by 9:25AM ET (1325GMT), up 6.1 cents, or around 2.1%. It touched its highest since July 5 at \$2.992 earlier. Natural gas jumped more than 2% on Monday amid bullish weather forecasts. Longer-term models showed the western, central, and southern U.S. will be very warm to hot through July 23, as high pressure dominates. Updated weather forecasting models showed temperatures over most of the U.S. will warm back into the upper 90s to 100s Fahrenheit this week. For more on this story [investing.com](http://investing.com) or click the following link <http://bit.ly/2uNXK3H>

## 12 MONTH CANDLESTICK (WEEKLY)



## Prompt Natural Gas (NG) Daily Sentiment

**BEARISH**



RESISTANCE  
3.09 & 3.14  
SUPPORT  
2.96 & 2.88

## Trading Summary

### NATURAL GAS

Futures	Close	Change
NG	3.047	0.118
Volume	300,070	3,289
Open Int.	1,232,601	19,568

### CRUDE AND GASOLINE

Futures	Close	Change
Crude	45.04	0.64
RBOB	1.5183	0.0176
Crude/NG	14.78	(0.38)

### METALS

Futures	Close	Change
Gold	1,214.70	0.80

### EQUITIES

Exchange	Close	Change
DOW	21,409.07	0.55
S&P 500	2,294.62	(132.81)

### CURRENCY

Currency	Close	Change
EUR/USD	1.1518	0.0074
USD/CND	1.2934	0.0014

## Contact Us



**Mansfield Energy Corp**  
1025 Airport Pkwy  
Gainesville, GA 30501  
  
[www.mansfield.energy](http://www.mansfield.energy)  
[info@mansfieldoil.com](mailto:info@mansfieldoil.com)

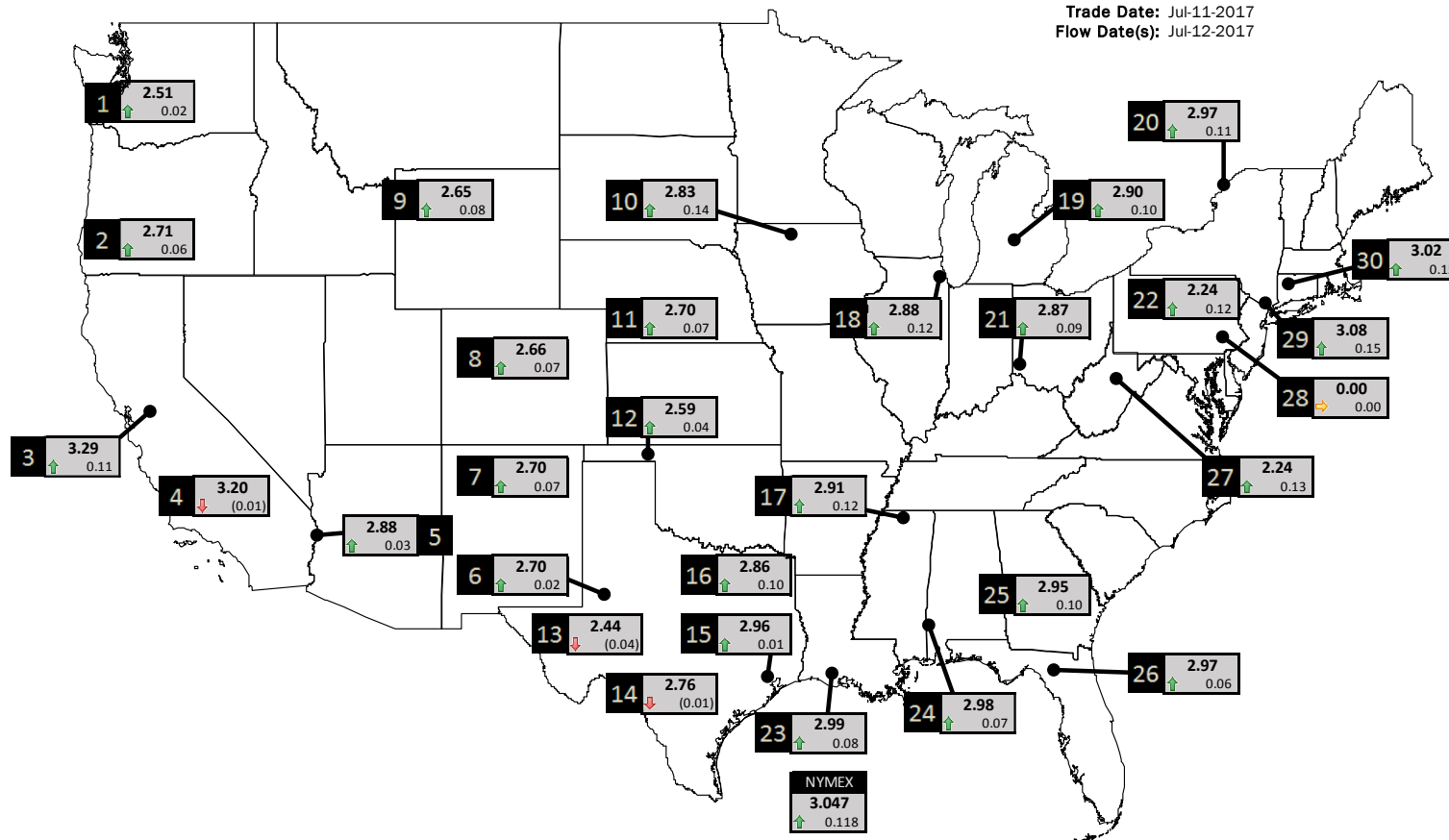
Phone: (800) 695-6626



# NATURAL GAS NEWS

## PHYSICAL SPOT NATURAL GAS PRICE MAP

Trade Date: Jul-11-2017  
Flow Date(s): Jul-12-2017



ID	DAILY INDEX	PRICE	CHANGE
1	Stanfield	2.51	0.02
2	Malin	2.71	0.06
3	PG&E - Citygate	3.29	0.11
4	SoCal-Citygate	3.20	(0.01)
5	SoCal Border	2.88	0.03
6	Waha	2.70	0.02
7	EPSJ Blanco Pool	2.70	0.07
8	Opal Plant Tailgate	2.66	0.07
9	NWP-Wyoming	2.65	0.08
10	Ventura	2.83	0.14

ID	DAILY INDEX	PRICE	CHANGE
11	NGPL-Midcont Pool	2.70	0.07
12	Panhandle	2.59	0.04
13	EP-Permian	2.44	(0.04)
14	TGP-ZO	2.76	(0.01)
15	Houston Ship Channel	2.96	0.01
16	NGPL-TXOK	2.86	0.10
17	TETCO-M1.30	2.91	0.12
18	Chicago Citygates	2.88	0.12
19	Michcon	2.90	0.10
20	Iroquois (into)	2.97	0.11
	NYMEX	3.047	0.118

ID	DAILY INDEX	PRICE	CHANGE
21	REX E-ANR	2.87	0.09
22	Leidy-Transco	2.24	0.12
23	Henry	2.99	0.08
24	Transco-85	2.98	0.07
25	Sonat-ZO South	2.95	0.10
26	FGT-Z3	2.97	0.06
27	Dominion-South	2.24	0.13
28	Transco-Z6 (non-NY)	0.00	0.00
29	Transco-Z6 (NY)	3.08	0.15
30	Iroquois-Z2	3.02	0.15

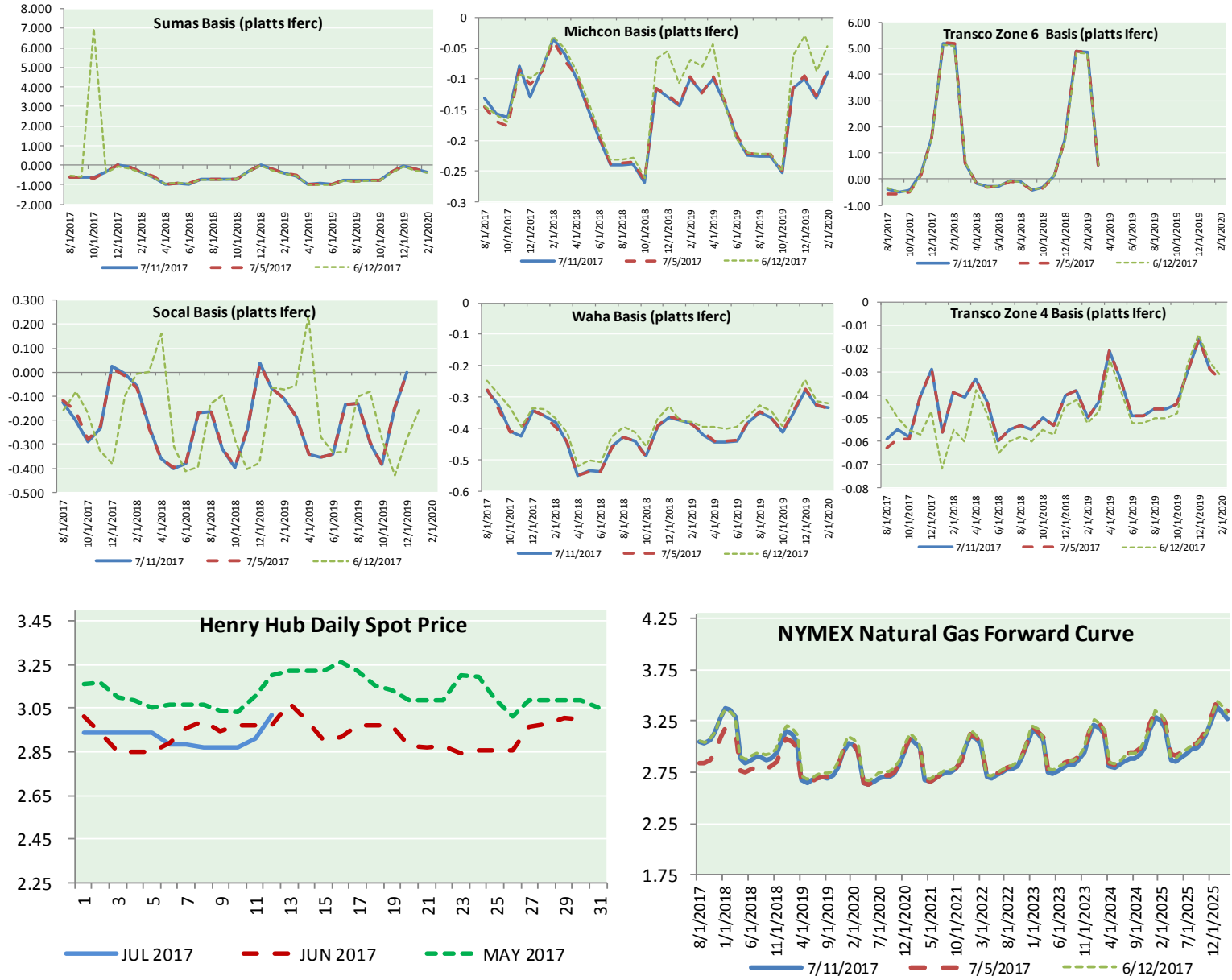
DISCLAIMER: The content herein is privileged and confidential. Content is presented for informational purposes and is a reflection of the market opinions of its authors subject to change without notice. Content is derived from sources believed to be accurate at the time of release but carries no guarantee of accuracy or completeness. Mansfield Energy Corp and its clients may or may not take positions similar or opposite those discussed herein. The reader should realize that the trading of commodities involves risk, and the reader assumes all responsibility for the risk of financial losses.





# NATURAL GAS NEWS

## NATURAL GAS BASIS FUTURES, HENRY HUB SPOT PRICES, AND FORWARD CURVE



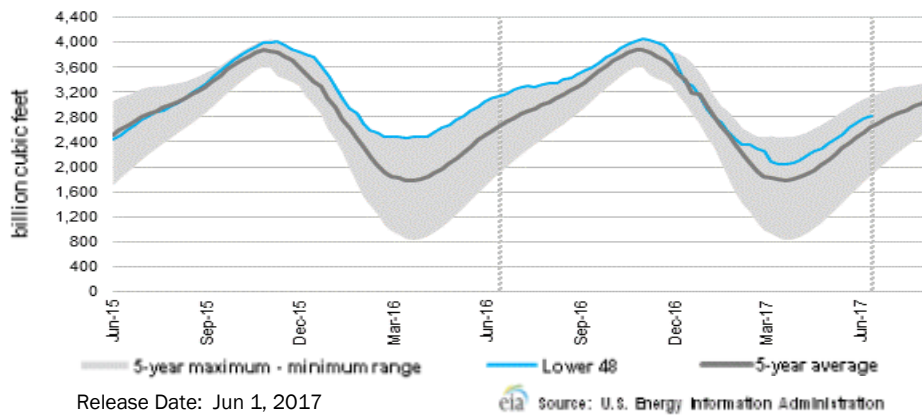
### CME NG Option Prices

ATM Call			
Month	Strike	Close	Imp Vol
Aug-17	3.050	0.087	41.2
Sep-17	3.000	0.171	37.5
Oct-17	3.050	0.196	35.6
Nov-17	3.100	0.243	35.6
Dec-17	3.250	0.289	35.6
Jan-18			
Feb-18			
Mar-18			
Apr-18			
May-18			
Jun-18			
Jul-18			
Aug-18			
Sep-18			
Oct-18			
Nov-18			
Dec-18			

### CME NG Option Prices

ATM Put			
Month	Strike	Close	Imp Vol
Aug-17	3.050	0.084	30.0
Sep-17	3.000	0.130	31.9
Oct-17	3.050	0.181	31.9
Nov-17	3.100		
Dec-17	3.250	0.253	31.9
Jan-18			
Feb-18			
Mar-18			
Apr-18			
May-18			
Jun-18			
Jul-18			
Aug-18			
Sep-18			
Oct-18			
Nov-18			
Dec-18			

WEEKLY GAS IN UNDERGROUND STORAGE WITH 5-YR RANGE



Rig Count

Report Date: July 7, 2017

	Total	Change
US -	952	+12
CN -	175	(14)

EIA Weekly NG Storage Actual and Surveys for June 28, 2017  
 Released July 7, 2017

Citi — +68  
 ARM — +62  
 Reuters — +66

EIA ACTUAL — +61

Total Working Gas In Storage

**2,888 BCF**  
 +72 BCF (LAST WEEK)  
 (285) BCF (LAST YEAR)  
 +187 BCF (5-YR AVG)

U.S. Natural Gas Supply Gas Week 6/15 - 6/21

Average daily values (BCF/D):  
 Last Year (BCF/d)  
 Dry Production — +71.3  
 Total Supply — +77.5  
 Last Week (BCF/d)  
 Dry Production — +71.6  
 Total Supply — +77.2

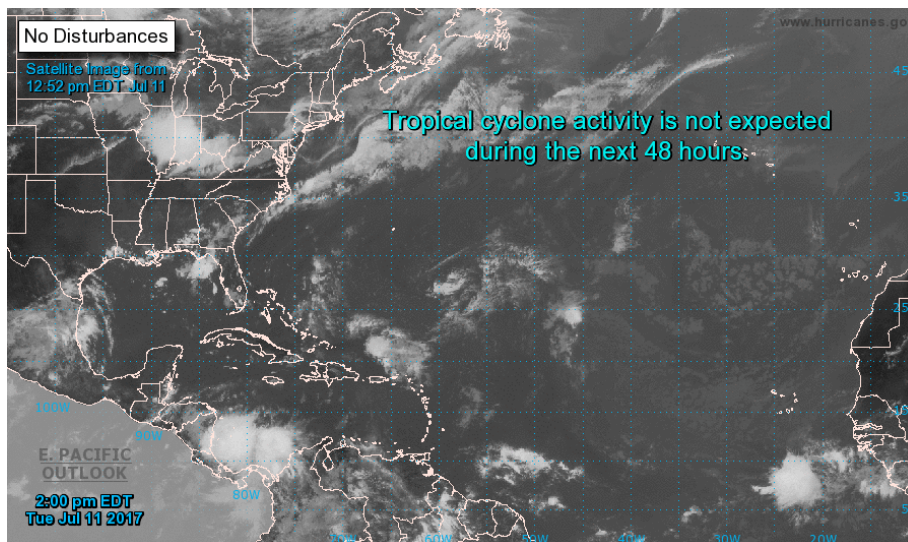
[NEXT REPORT ON JUL 13]

U.S. Natural Gas Demand Gas Week 6/15 - 6/21

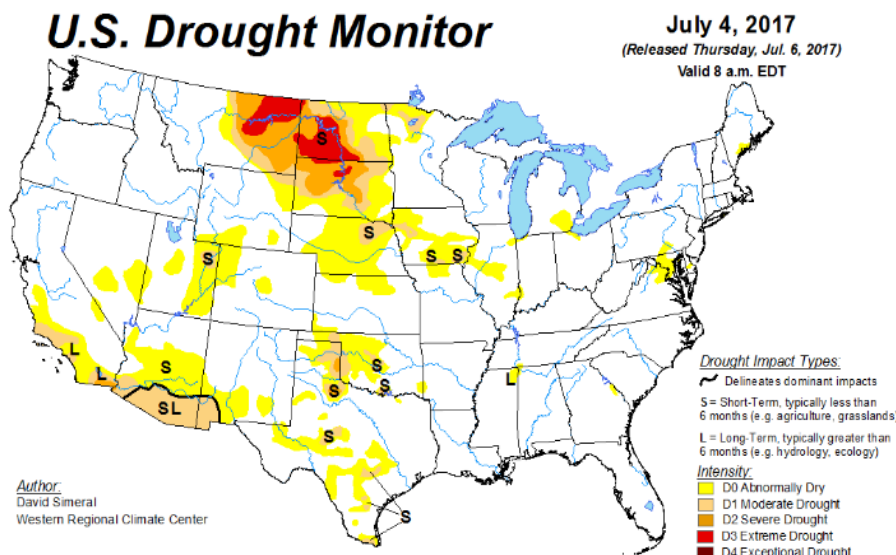
Average daily values (BCF/D):  
 Last Year (BCF/d)  
 Power — +34.6  
 Total Demand — +72.3  
 Last Week (BCF/d)  
 Power — +29.4  
 Total Demand — +68.8

[NEXT REPORT ON JUL 13]

TROPICAL STORM ACTIVITY— ATLANTIC

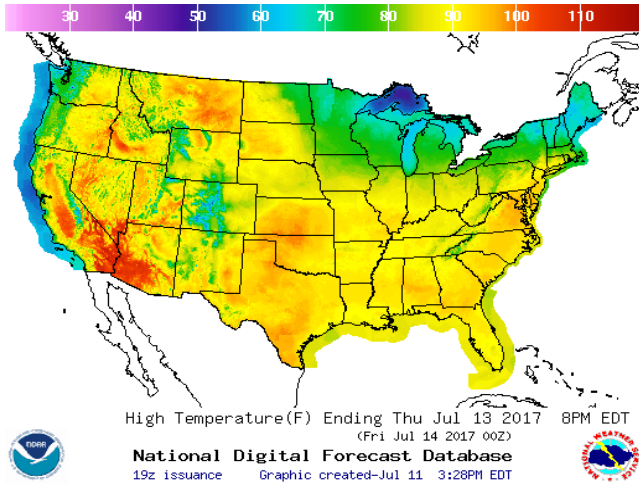


US DROUGHT MONITOR

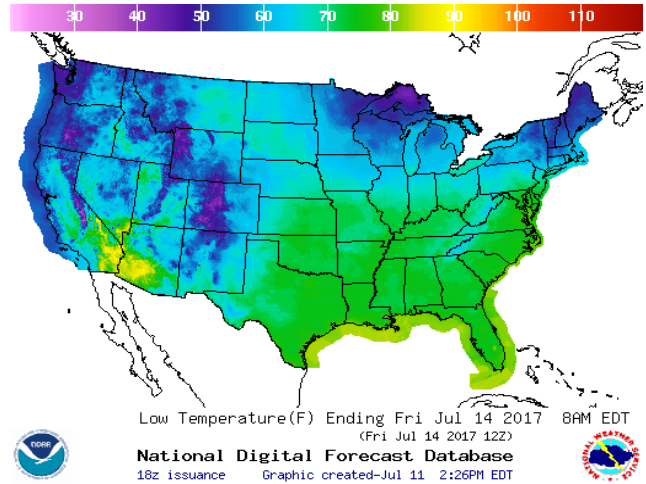


WEATHER – HIGH / LOW TEMPERATURE TOMORROW

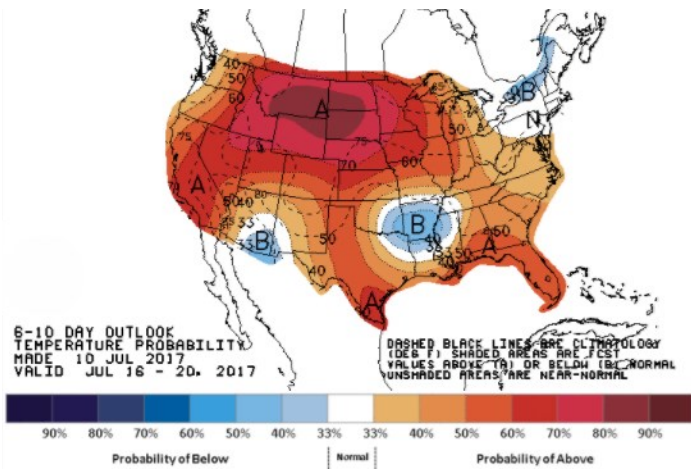
HIGH Temperature



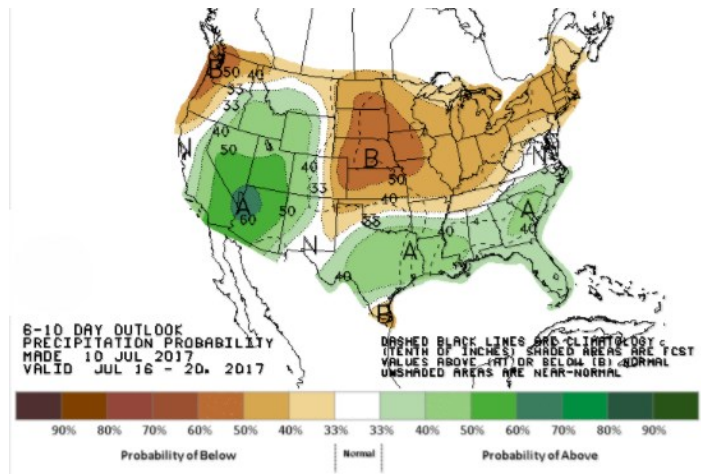
LOW Temperature



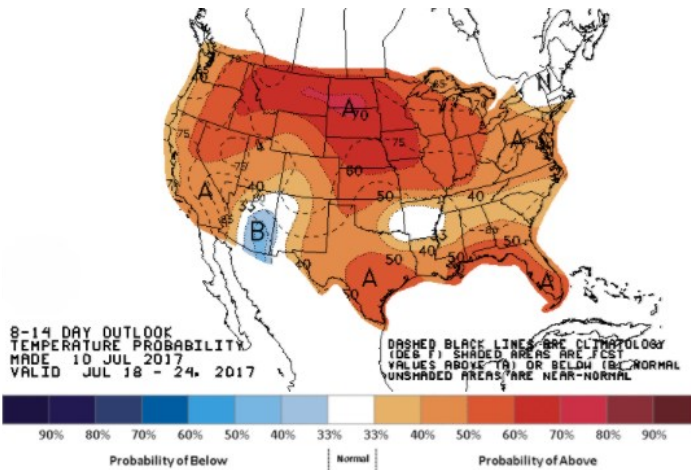
WEATHER – 6 TO 10 DAY OUTLOOK – NOAA  
Temperature



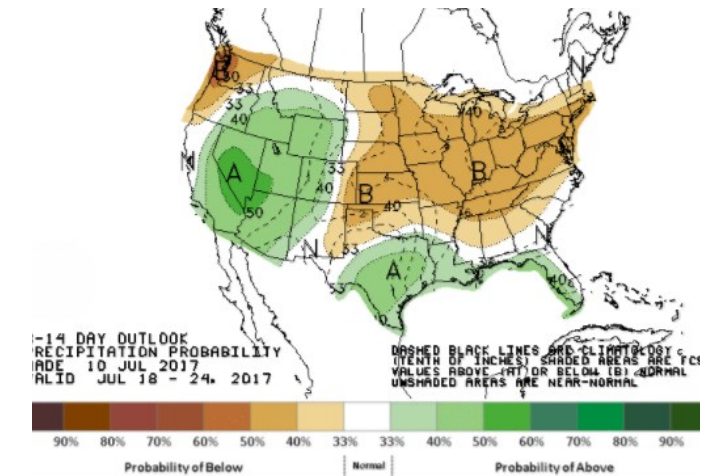
Precipitation



WEATHER – 8 TO 14 DAY OUTLOOK – NOAA  
Temperature

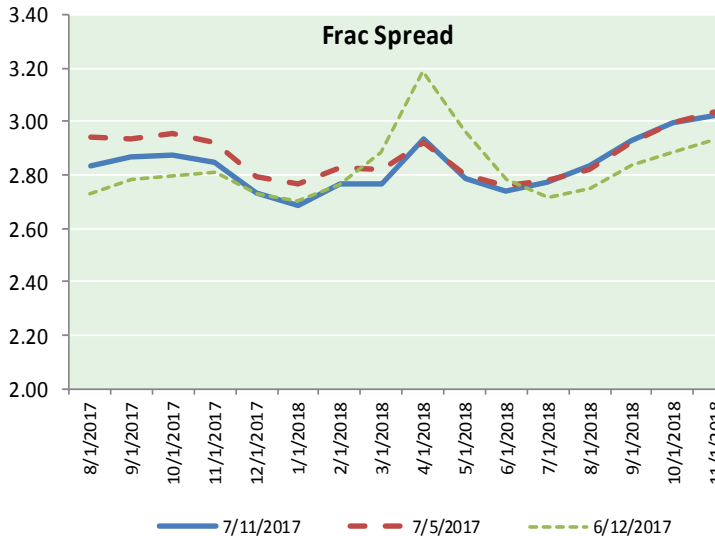
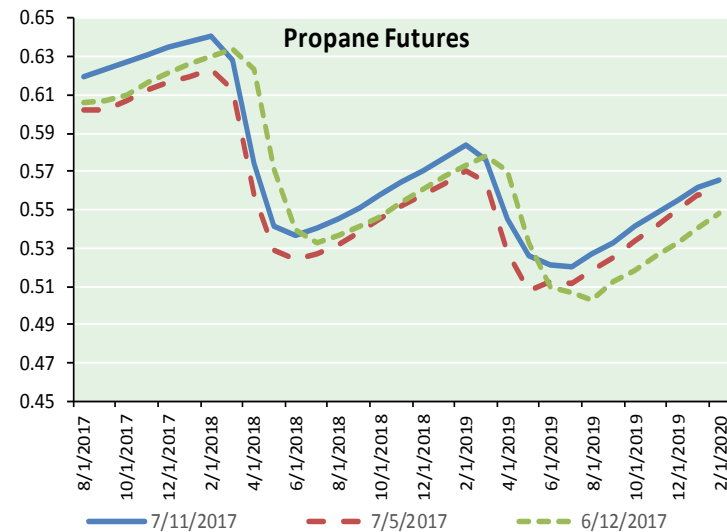
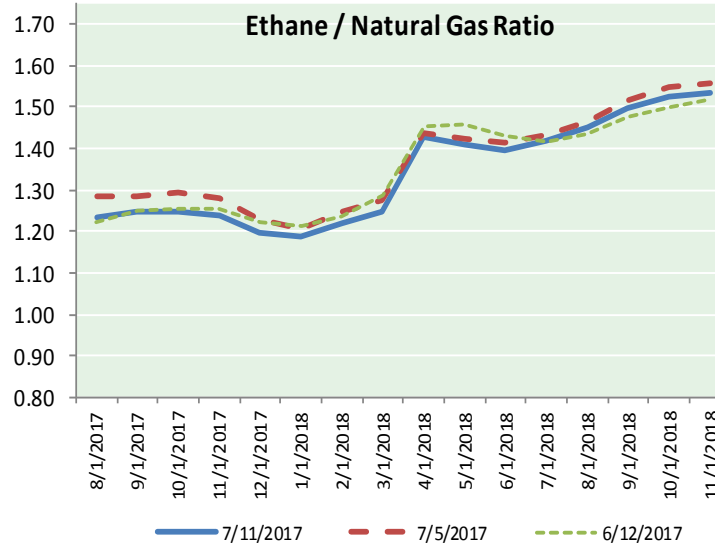
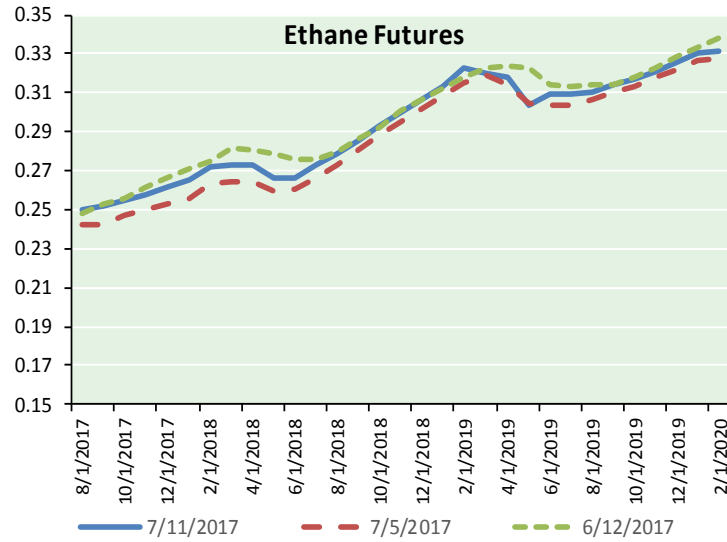


Precipitation





ETHANE FUTURES, NG/ETHANE RATIO, PROPANE FUTURES, AND THE FRAC SPREAD



CME Future Prices

Ethane (C2)

Non-LDH— Mont Belvieu

Month	Close	Change
Aug-17	0.250	0.002
Sep-17	0.252	0.002
Oct-17	0.255	0.002
Nov-17	0.258	0.002
Dec-17	0.261	0.003
Jan-18	0.265	0.003
Feb-18	0.272	0.003
Mar-18	0.273	0.003
Apr-18	0.273	0.005
May-18	0.266	0.001
Jun-18	0.266	0.000
Jul-18	0.273	0.001

1YR Strip 0.264 0.002

CME Future Prices

Propane (C3)

Non-LDH— Mont Belvieu

Month	Close	Change
Aug-17	0.620	0.012
Sep-17	0.623	0.016
Oct-17	0.627	0.015
Nov-17	0.631	0.015
Dec-17	0.635	0.015
Jan-18	0.638	0.014
Feb-18	0.640	0.013
Mar-18	0.628	0.011
Apr-18	0.575	0.010
May-18	0.541	0.008
Jun-18	0.537	0.008
Jul-18	0.540	0.009

1YR Strip 0.603 0.012

# NATURAL GAS NEWS



## Prompt WTI (CL) Crude Daily Sentiment

**BEARISH**



RESISTANCE  
45.96 & 46.87  
SUPPORT  
43.98 & 42.91

### FOLLOW US ON TWITTER:



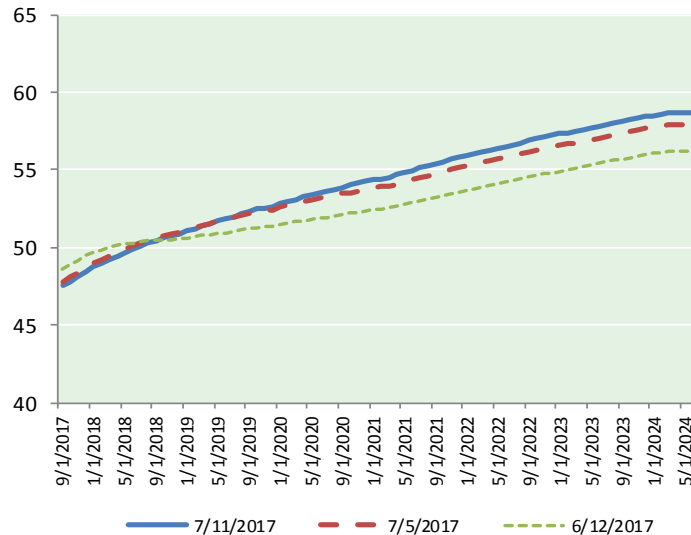
@MPG\_NatGasNews

## NYMEX Brent (BZ)

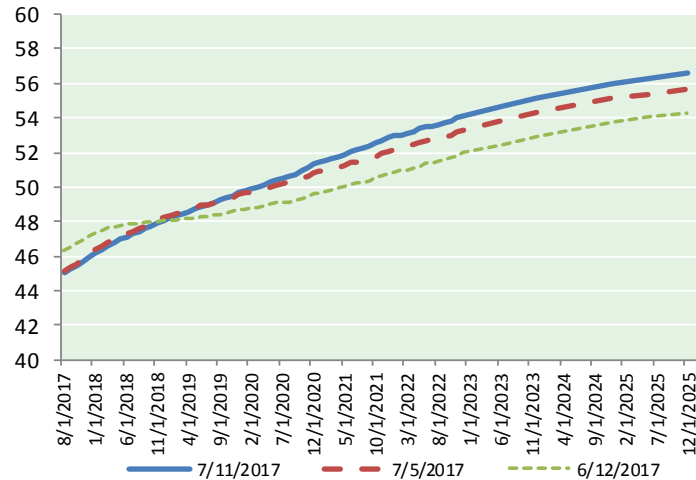
### Futures

Month	Close	Change
Sep-17	47.52	0.64
Oct-17	47.81	0.64
Nov-17	48.13	0.62
Dec-17	48.44	0.61
Jan-18	48.73	0.60
Feb-18	48.99	0.58
Mar-18	49.23	0.56
Apr-18	49.46	0.55
May-18	49.69	0.55
Jun-18	49.89	0.55
Jul-18	50.11	0.56
Aug-18	50.30	0.55
Sep-18	50.46	0.55
Oct-18	50.60	0.54
Nov-18	50.74	0.53
Dec-18	50.88	0.53
Jan-19	51.03	0.53
Feb-19	51.19	0.53
Mar-19	51.36	0.54
Apr-19	51.56	0.55
May-19	51.70	0.56
Jun-19	51.82	0.57
Jul-19	52.00	0.58
Aug-19	52.16	0.59
1YR Strip 2017	49.03	0.58
5YR Strip	47.98	0.63
5YR Strip	52.89	0.63

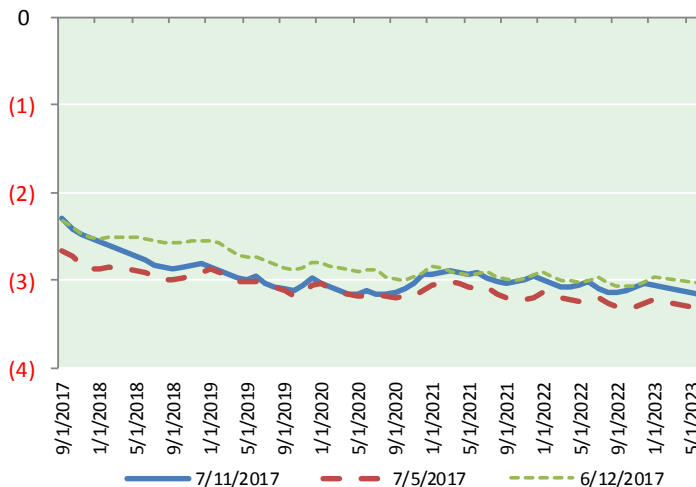
## BRENT CRUDE FORWARD CURVE



## WTI CRUDE FORWARD CURVE



## WTI-BRENT SPREAD



## FRAC Spread

### Specifications

Ethane : 42% 66,500 btu/g  
Propane: 28% 90,830 btu/g  
Butane: 11% 102,916 btu/g  
Iso-Butane: 6% 98,935 btu/g  
Natural Gasoline: 13%  
115,021 btu/g

## Prompt NGL Futures

### (\$/gallon)

Aug-17	Close	Change
Butane	0.750	0.004
Iso-Butane	0.744	0.003
Nat Gasoline	1.012	0.009

## NYMEX WTI (CL) Futures

Month	Close	Change
Aug-17	45.04	0.64
Sep-17	45.23	0.63
Oct-17	45.40	0.61
Nov-17	45.65	0.61
Dec-17	45.92	0.60
Jan-18	46.17	0.59
Feb-18	46.39	0.57
Mar-18	46.59	0.55
Apr-18	46.78	0.53
May-18	46.96	0.52
Jun-18	47.13	0.51
Jul-18	47.29	0.49
Aug-18	47.45	0.48
Sep-18	47.60	0.47
Oct-18	47.76	0.46
Nov-18	47.91	0.45
Dec-18	48.07	0.45
Jan-19	48.18	0.45
Feb-19	48.30	0.45
Mar-19	48.43	0.46
Apr-19	48.58	0.46
May-19	48.71	0.47
Jun-19	48.86	0.49
Jul-19	48.97	0.49
1YR Strip 2017	46.21	0.57
5YR Strip	45.45	0.62
5YR Strip	49.80	0.59