

# NATURAL GAS



NEWS

JULY 10, 2017

## Prior Day's NYMEX Jul-17 Contract (CT)



## NYMEX NG Futures

Month	Close	Change
Aug-17	2.864	(0.024)
Sep-17	2.857	(0.024)
Oct-17	2.886	(0.022)
Nov-17	2.947	(0.020)
Dec-17	3.104	(0.018)
Jan-18	3.201	(0.016)
Feb-18	3.189	(0.015)
Mar-18	3.137	(0.012)
Apr-18	2.786	(0.004)
May-18	2.757	0.000
Jun-18	2.784	0.000
Jul-18	2.812	0.000
Aug-18	2.820	0.000
Sep-18	2.797	0.000
Oct-18	2.816	0.001
Nov-18	2.867	0.004
Dec-18	3.001	0.008
Jan-19	3.088	0.008
Feb-19	3.059	0.006
Mar-19	2.992	0.003
Apr-19	2.652	(0.005)
May-19	2.629	(0.004)
Jun-19	2.656	(0.004)
Jul-19	2.686	(0.004)
1YR Strip	2.944	(0.013)
2017	2.932	(0.022)
5YR Strip	2.840	(0.005)

## IN THE NEWS

The BLM releases draft for natural gas project in Wyoming — KGWV Cheyenne reports: In its ongoing effort to provide opportunities for responsible energy development, support the creation of jobs, and facilitate positive economic impacts to local communities, the Bureau of Land Management (BLM) today released its

- The BLM releases draft for natural gas project in Wyoming
- U.S. Shale Gas Booming Despite Global Glut

initial environmental analysis of a major natural gas development in Wyoming. Appearing in today's Federal Register, the Draft Environmental Impact Statement (DEIS) for the Normally Pressured Lance (NPL) Natural Gas Development Project identifies a range of alternatives as to how the project can move forward. The document is available for a 45-day public comment period. The proposed project, which was submitted by Jonah Energy LLC, could unlock 5.25 trillion cubic feet of natural gas, providing a reliable, long-term energy source for the nation and creating more than 700 full-time jobs and stable employment opportunities for southwestern Wyoming. The project could also create \$2.2 billion in royalties. For more on this story visit [kgwn.tv](http://kgwn.tv) or click the following link <http://bit.ly/2sVhjVB>

U.S. Shale Gas Booming Despite Global Glut — Oilprice.com reports: The United States has led the pack in the shale revolution, profiting more than any other nation. The U.S. enjoys the benefit of having the majority of its wells located domestically, thanks to vast natural shale formations, allowing the nation to keep all profits for themselves without any negotiations or diplomatic gymnastics. Due to the up rise of fracking and other technological advances, the production of natural gas and shale oil in the U.S. had been increasing steadily for years. Last year marked a sharp decline as a gas glut led to a dramatic plunge in pricing. But now, just as shale gas prices are finally rebounding from last year's all-time-lows, the United States' two biggest shale gas deposits are producing record amounts of fuel, threatening to push gas prices back down. For more oilprice.com or click <http://bit.ly/2syPAul>



## Prompt Natural Gas (NG) Daily Sentiment

BEARISH



RESISTANCE  
2.96 & 3.09  
SUPPORT  
2.78 & 2.71

## Trading Summary

### NATURAL GAS

Futures	Close	Change
NG	2.864	(0.024)
Volume	300,070	3,289
Open Int.	1,232,601	19,568

### CRUDE AND GASOLINE

Futures	Close	Change
Crude	44.23	(1.29)
RBOB	1.4984	(0.0303)
Crude/NG	15.44	(0.32)

### METALS

Futures	Close	Change
Gold	1,209.70	2.50

### EQUITIES

Exchange	Close	Change
DOW	21,414.34	94.30
S&P 500	2,294.62	(115.13)

### CURRENCY

Currency	Close	Change
EUR/USD	1.1445	(0.0020)
USD/CND	1.2921	0.0041

## Contact Us



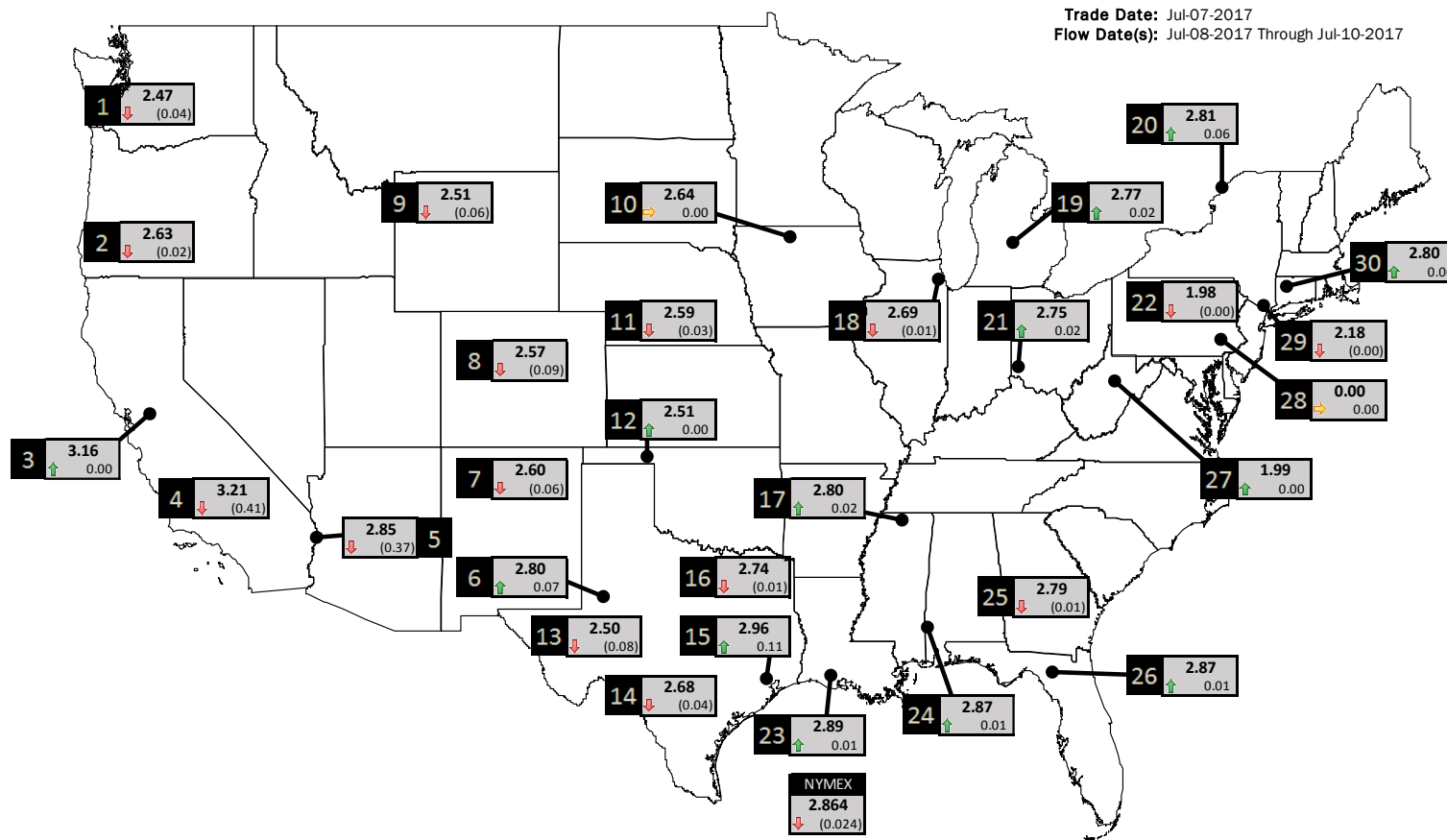
**Mansfield Energy Corp**  
1025 Airport Pkwy  
Gainesville, GA 30501  
  
[www.mansfield.energy](http://www.mansfield.energy)  
[info@mansfieldoil.com](mailto:info@mansfieldoil.com)

Phone: (800) 695-6626



# NATURAL GAS NEWS

## PHYSICAL SPOT NATURAL GAS PRICE MAP



ICE DATA

ID	DAILY INDEX	PRICE	CHANGE
1	Stanfield	2.47	(0.04)
2	Malin	2.63	(0.02)
3	PG&E - Citygate	3.16	0.00
4	SoCal-Citygate	3.21	(0.41)
5	SoCal Border	2.85	(0.37)
6	Waha	2.80	0.07
7	EP-SJ Blanco Pool	2.60	(0.06)
8	Opal Plant Tailgate	2.57	(0.09)
9	NWP-Wyoming	2.51	(0.06)
10	Ventura	2.64	0.00

ID	DAILY INDEX	PRICE	CHANGE
11	NGPL-Midcont Pool	2.59	(0.03)
12	Panhandle	2.51	0.00
13	EP-Permian	2.50	(0.08)
14	TGP-ZO	2.68	(0.04)
15	Houston Ship Channel	2.96	0.11
16	NGPL-TXOK	2.74	(0.01)
17	TETCO-M1 30	2.80	0.02
18	Chicago Citygates	2.69	(0.01)
19	Michcon	2.77	0.02
20	Iroquois (into)	2.81	0.06

ID	DAILY INDEX	PRICE	CHANGE
21	REX E-ANR	2.75	0.02
22	Leidy-Transco	1.98	(0.00)
23	Henry	2.89	0.01
24	Transco-85	2.87	0.01
25	Sonat-ZO South	2.79	(0.01)
26	FGT-Z3	2.87	0.01
27	Dominion-South	1.99	0.00
28	Transco-Z6 (non-NY)	0.00	0.00
29	Transco-Z6 (NY)	2.18	(0.00)
30	Iroquois-Z2	2.80	0.06

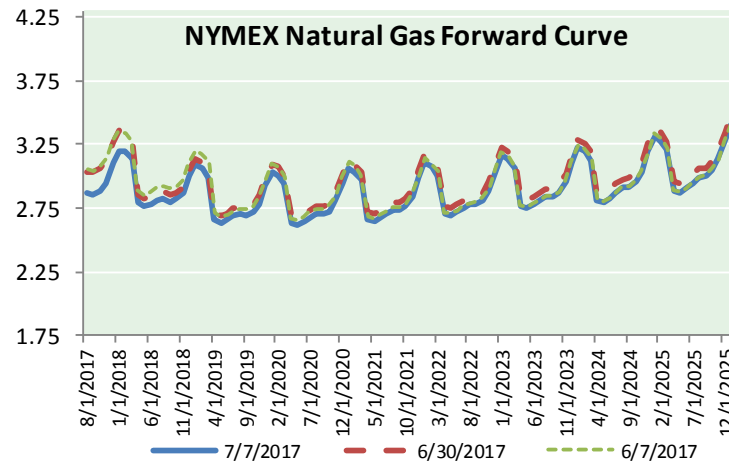
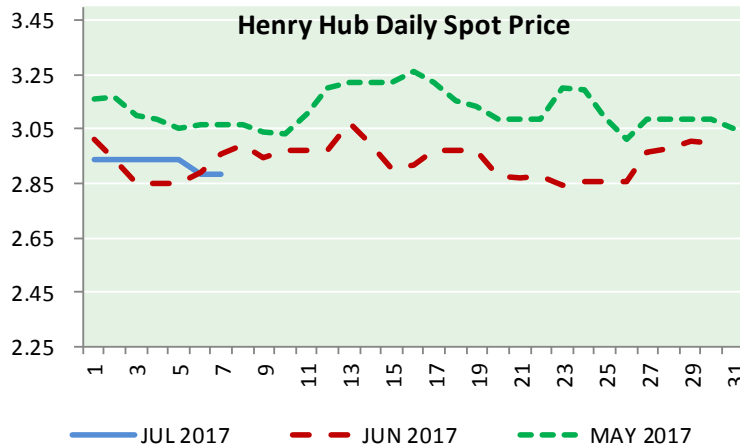
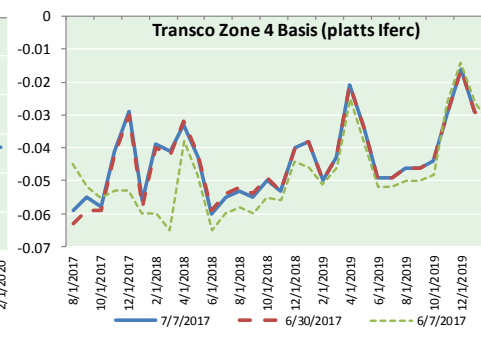
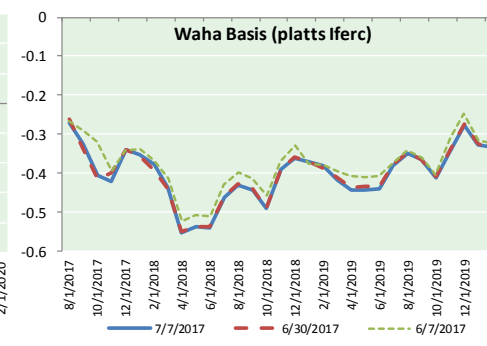
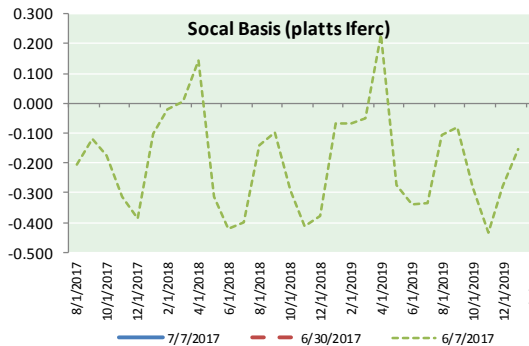
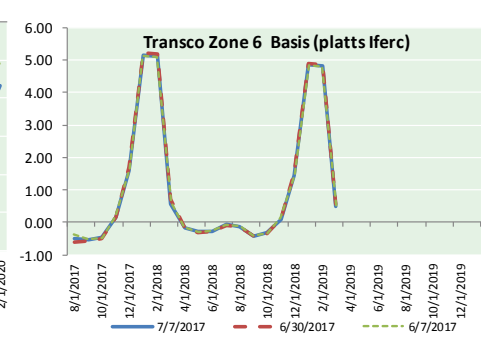
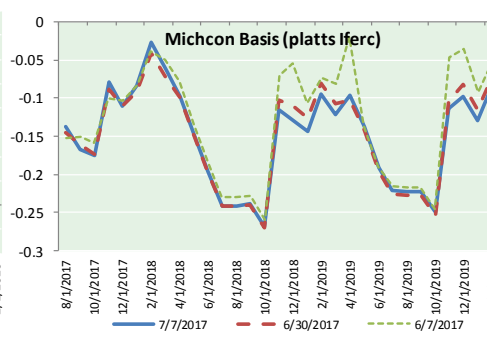
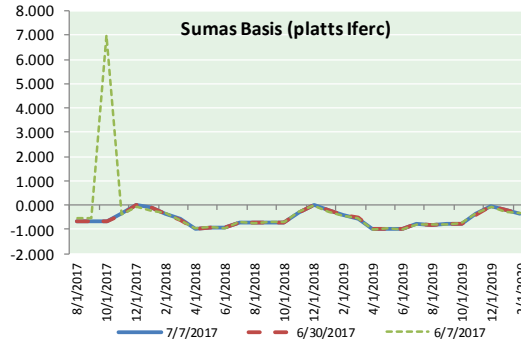
DISCLAIMER: The content herein is privileged and confidential. Content is presented for informational purposes and is a reflection of the market opinions of its authors subject to change without notice. Content is derived from sources believed to be accurate at the time of release but carries no guarantee of accuracy or completeness. Mansfield Energy Corp and its clients may or may not take positions similar or opposite those discussed herein. The reader should realize that the trading of commodities involves risk, and the reader assumes all responsibility for the risk of financial losses.





# NATURAL GAS NEWS

## NATURAL GAS BASIS FUTURES, HENRY HUB SPOT PRICES, AND FORWARD CURVE



### CME NG Option Prices

#### ATM Call

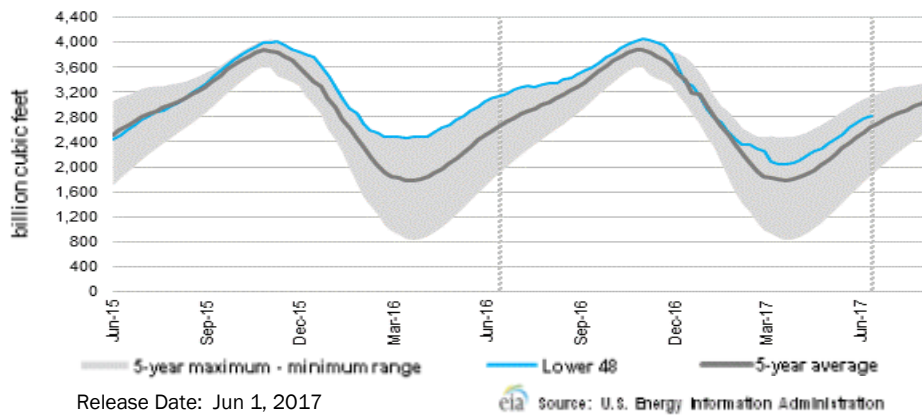
Month	Strike	Close	Imp Vol
Aug-17	2.900	0.075	28.1
Sep-17	2.900	0.127	29.0
Oct-17	2.950	0.157	30.0
Nov-17	3.000	0.194	30.0
Dec-17	3.150	0.249	31.9
Jan-18			
Feb-18			
Mar-18			
Apr-18			
May-18			
Jun-18			
Jul-18			
Aug-18			
Sep-18			
Oct-18			
Nov-18			
Dec-18			

### CME NG Option Prices

#### ATM Put

Month	Strike	Close	Imp Vol
Aug-17	2.900	0.113	48.7
Sep-17	2.900	0.174	41.2
Oct-17	2.950	0.223	39.4
Nov-17	3.000	0.248	37.5
Dec-17	3.150	0.294	37.5
Jan-18			
Feb-18			
Mar-18			
Apr-18			
May-18			
Jun-18			
Jul-18			
Aug-18			
Sep-18			
Oct-18			
Nov-18			
Dec-18			

WEEKLY GAS IN UNDERGROUND STORAGE WITH 5-YR RANGE



Rig Count

Report Date: July 7, 2017

	Total	Change
US -	952	+12
CN -	175	(14)

EIA Weekly NG Storage Actual and Surveys for June 28, 2017

Released July 7, 2017

- Citi — +68
- ARM — +62
- Reuters — +66

EIA ACTUAL — +61

Total Working Gas In Storage

**2,888 BCF**

- +72 BCF (LAST WEEK)
- (285) BCF (LAST YEAR)
- +187 BCF (5-YR AVG)

U.S. Natural Gas Supply Gas Week 6/15 - 6/21

Average daily values (BCF/D):

- Last Year (BCF/d)
- Dry Production — +71.3
- Total Supply — +77.5
- Last Week (BCF/d)
- Dry Production — +71.6
- Total Supply — +77.2

[NEXT REPORT ON JUL 6]

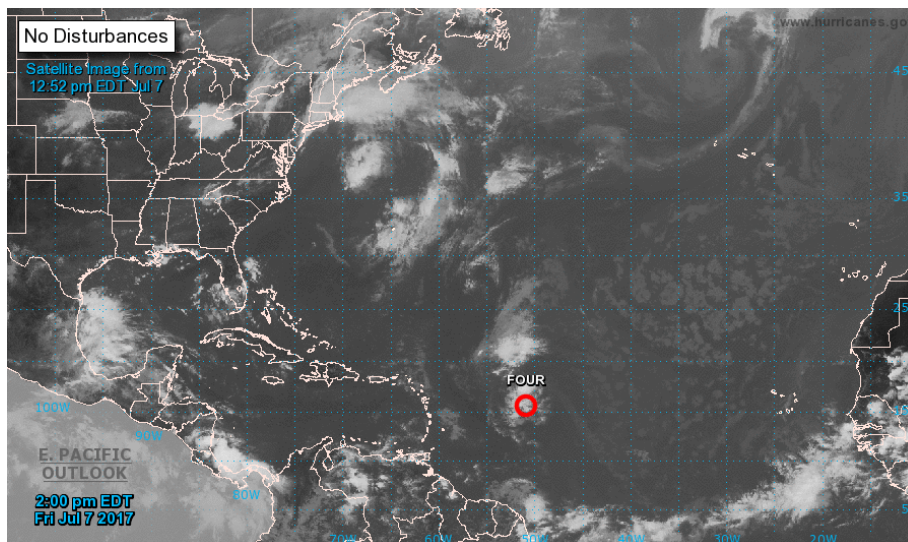
U.S. Natural Gas Demand Gas Week 6/15 - 6/21

Average daily values (BCF/D):

- Last Year (BCF/d)
- Power — +34.6
- Total Demand — +72.3
- Last Week (BCF/d)
- Power — +29.4
- Total Demand — +68.8

[NEXT REPORT ON JUN 29]

TROPICAL STORM ACTIVITY— ATLANTIC



For the North Atlantic...Caribbean Sea and the Gulf of Mexico:

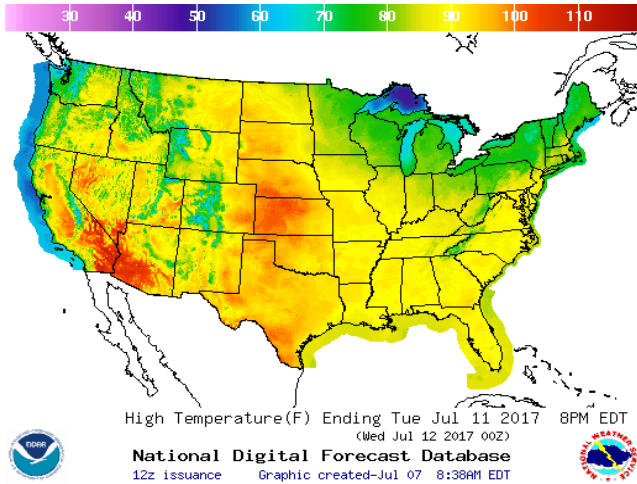
The National Hurricane Center is issuing advisories on Tropical Depression Four, located well to the east of the Lesser Antilles.

Tropical cyclone formation is not expected during the next 5 days.

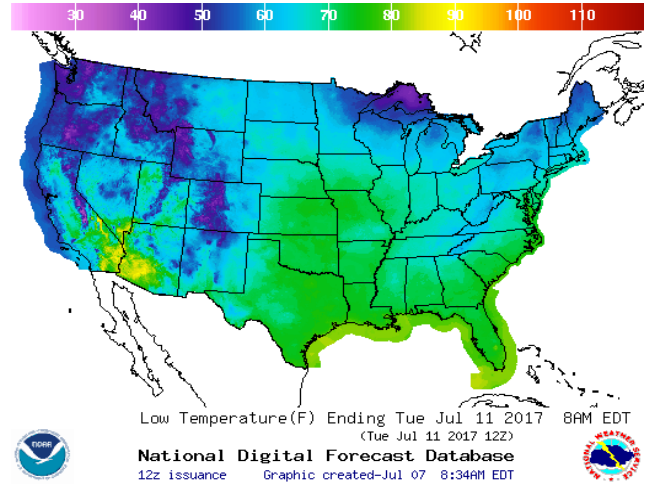
Forecaster Avila

WEATHER – HIGH / LOW TEMPERATURE TOMORROW

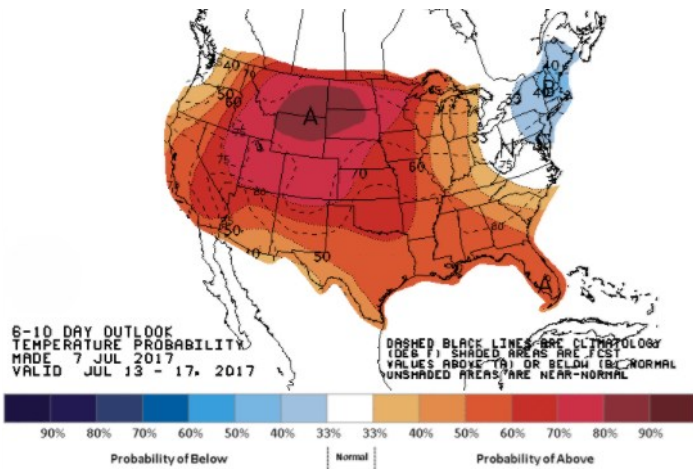
HIGH Temperature



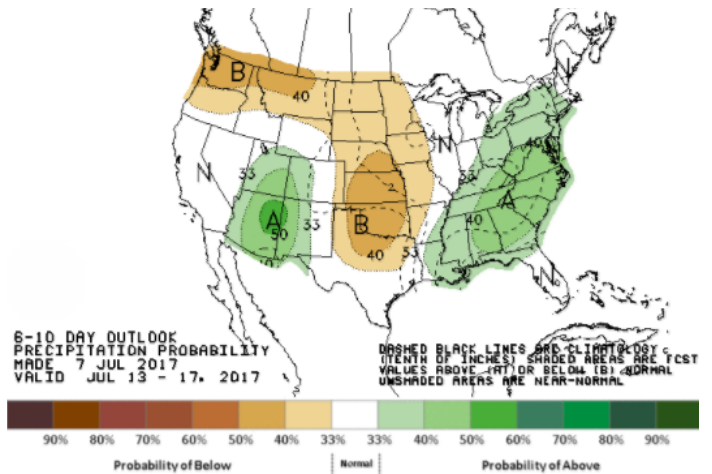
LOW Temperature



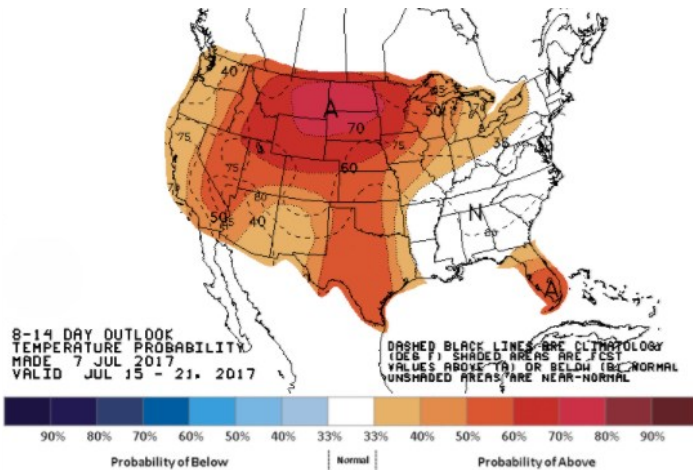
WEATHER – 6 TO 10 DAY OUTLOOK – NOAA  
Temperature



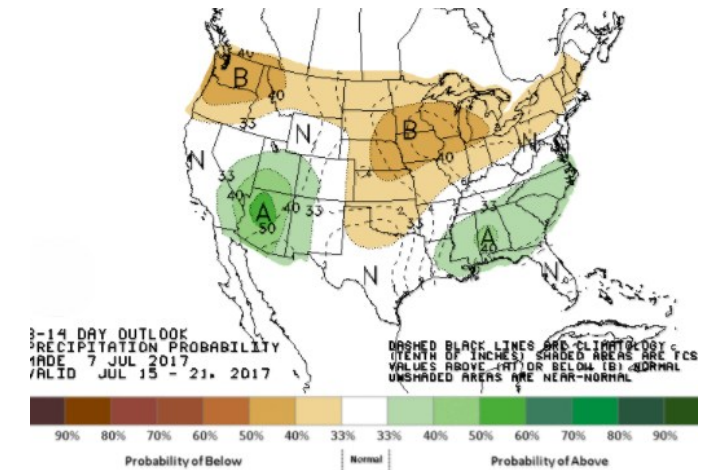
Precipitation



WEATHER – 8 TO 14 DAY OUTLOOK – NOAA  
Temperature

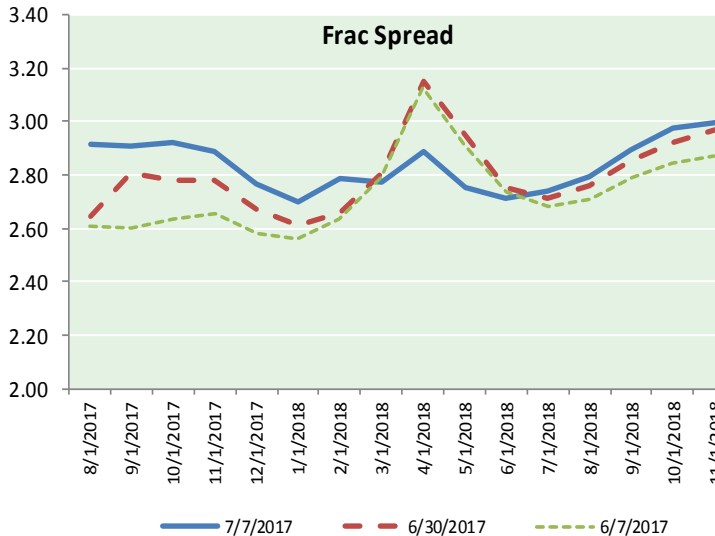
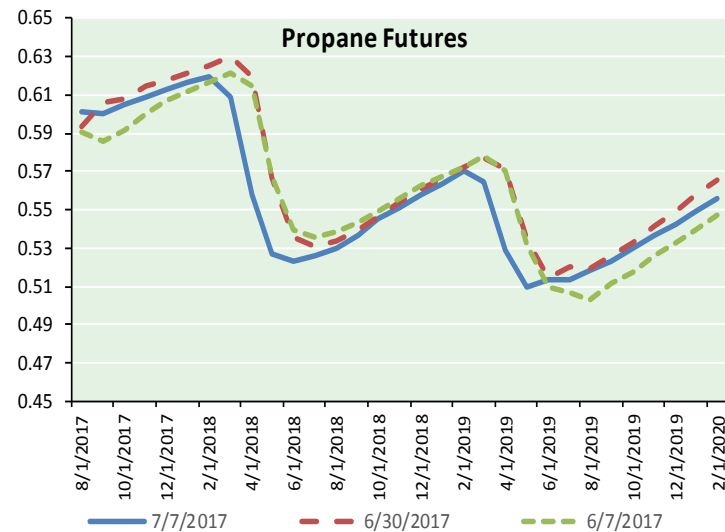
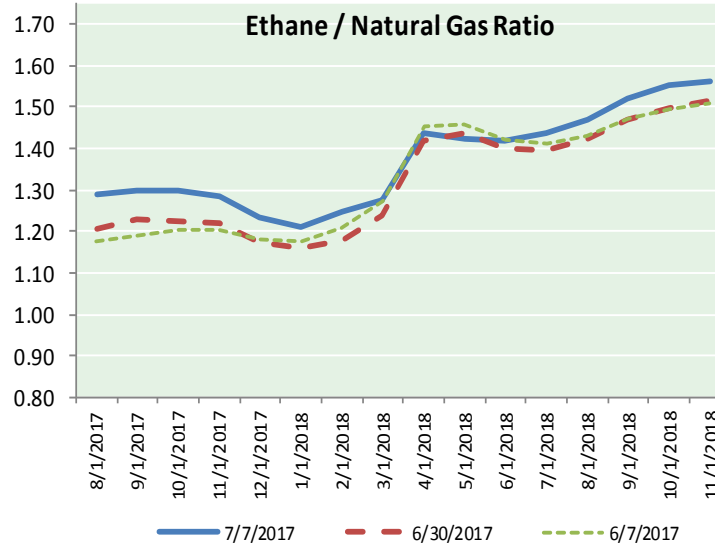
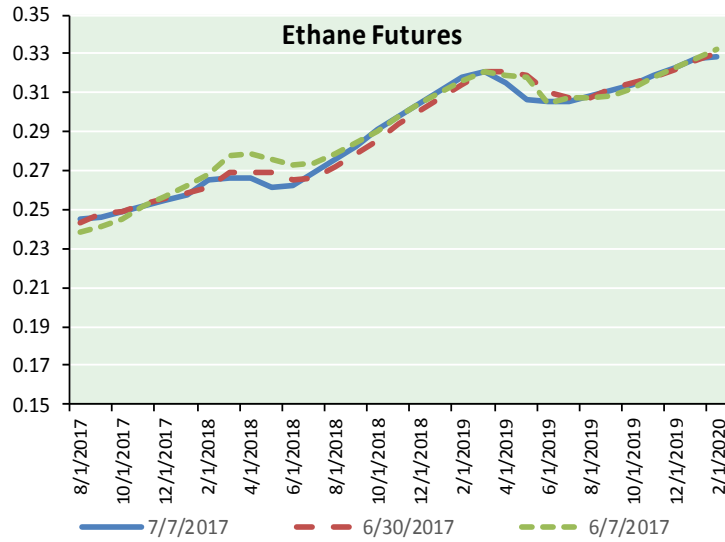


Precipitation





ETHANE FUTURES, NG/ETHANE RATIO, PROPANE FUTURES, AND THE FRAC SPREAD



CME Future Prices

Ethane (C2)

Non-LDH— Mont Belvieu

Month	Close	Change
Aug-17	0.246	(0.001)
Sep-17	0.246	(0.000)
Oct-17	0.249	0.000
Nov-17	0.252	(0.000)
Dec-17	0.255	(0.000)
Jan-18	0.258	(0.000)
Feb-18	0.265	(0.001)
Mar-18	0.266	(0.001)
Apr-18	0.266	(0.001)
May-18	0.261	(0.001)
Jun-18	0.263	(0.001)
Jul-18	0.269	(0.000)

1YR Strip 0.258 (0.001)

CME Future Prices

Propane (C3)

Non-LDH— Mont Belvieu

Month	Close	Change
Aug-17	0.602	(0.006)
Sep-17	0.600	(0.007)
Oct-17	0.605	(0.006)
Nov-17	0.609	(0.006)
Dec-17	0.613	(0.006)
Jan-18	0.616	(0.006)
Feb-18	0.620	(0.006)
Mar-18	0.609	(0.006)
Apr-18	0.558	(0.006)
May-18	0.528	(0.006)
Jun-18	0.523	(0.006)
Jul-18	0.526	(0.006)

1YR Strip 0.584 (0.006)

# NATURAL GAS NEWS



## Prompt WTI (CL) Crude

### Daily Sentiment

**NEUTRAL**



RESISTANCE

46.80 & 48.46

SUPPORT

43.99 & 42.84

FOLLOW US ON TWITTER:



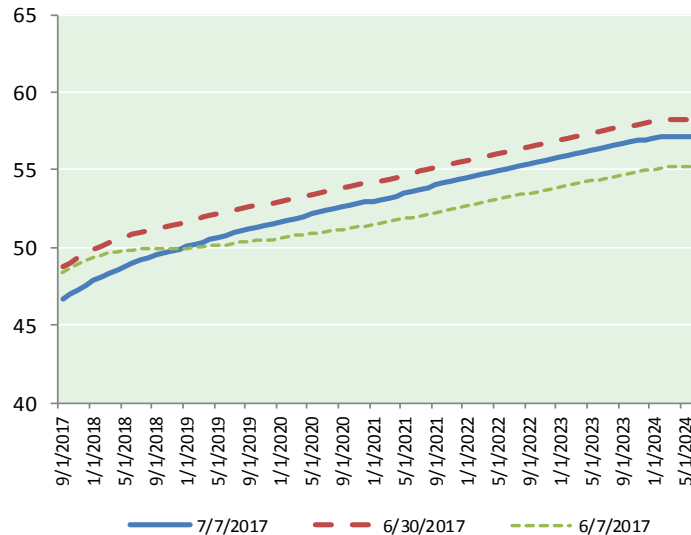
@MPG\_NatGasNews

## NYMEX Brent (BZ)

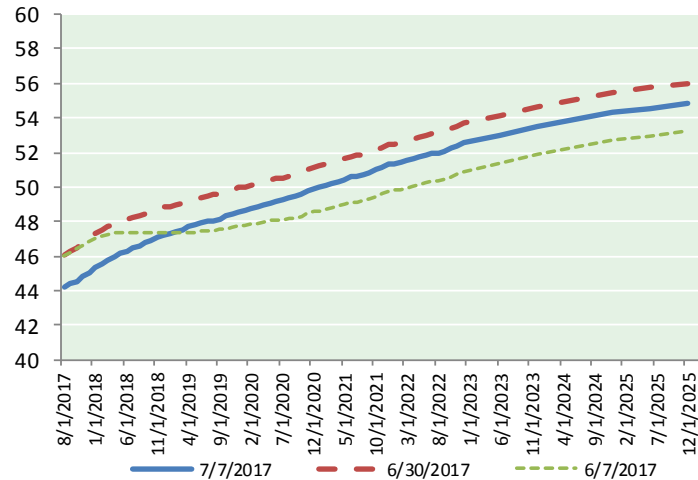
### Futures

Month	Close	Change
Sep-17	46.71	(1.40)
Oct-17	46.98	(1.41)
Nov-17	47.27	(1.41)
Dec-17	47.57	(1.40)
Jan-18	47.86	(1.40)
Feb-18	48.12	(1.38)
Mar-18	48.36	(1.37)
Apr-18	48.59	(1.36)
May-18	48.80	(1.34)
Jun-18	48.98	(1.32)
Jul-18	49.18	(1.31)
Aug-18	49.36	(1.29)
Sep-18	49.51	(1.28)
Oct-18	49.64	(1.27)
Nov-18	49.78	(1.25)
Dec-18	49.92	(1.23)
Jan-19	50.06	(1.21)
Feb-19	50.21	(1.19)
Mar-19	50.36	(1.17)
Apr-19	50.54	(1.15)
May-19	50.67	(1.13)
Jun-19	50.77	(1.12)
Jul-19	50.93	(1.10)
Aug-19	51.06	(1.08)
1YR Strip 2017	48.15	(1.37)
5YR Strip	47.13	(1.41)
5YR Strip	51.71	(1.04)

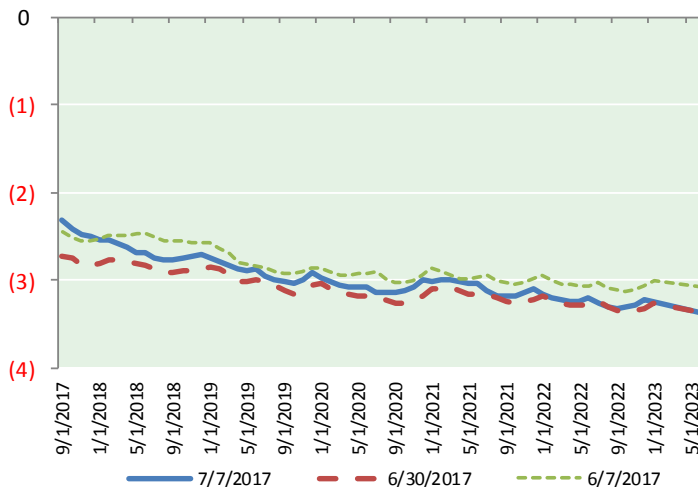
## BRENT CRUDE FORWARD CURVE



## WTI CRUDE FORWARD CURVE



## WTI-BRENT SPREAD



## FRAC Spread

### Specifications

Ethane : 42%	66,500 btu/g
Propane: 28%	90,830 btu/g
Butane: 11%	102,916 btu/g
Iso-Butane: 6%	98,935 btu/g
Natural Gasoline: 13%	115,021 btu/g

## Prompt NGL Futures

(\$/gallon)

Aug-17	Close	Change
Butane	0.743	(0.010)
Iso-Butane	0.739	(0.011)
Nat Gasoline	1.003	(0.019)

## NYMEX WTI (CL) Futures

Month	Close	Change
Aug-17	44.23	(1.29)
Sep-17	44.39	(1.31)
Oct-17	44.56	(1.33)
Nov-17	44.80	(1.33)
Dec-17	45.07	(1.33)
Jan-18	45.33	(1.33)
Feb-18	45.57	(1.31)
Mar-18	45.78	(1.29)
Apr-18	45.96	(1.27)
May-18	46.12	(1.26)
Jun-18	46.29	(1.24)
Jul-18	46.44	(1.22)
Aug-18	46.60	(1.20)
Sep-18	46.75	(1.19)
Oct-18	46.90	(1.18)
Nov-18	47.05	(1.18)
Dec-18	47.21	(1.17)
Jan-19	47.32	(1.16)
Feb-19	47.43	(1.15)
Mar-19	47.54	(1.13)
Apr-19	47.67	(1.11)
May-19	47.78	(1.09)
Jun-19	47.90	(1.08)
Jul-19	47.98	(1.07)
1YR Strip 2017	45.38	(1.29)
5YR Strip	44.61	(1.32)
5YR Strip	48.63	(1.02)