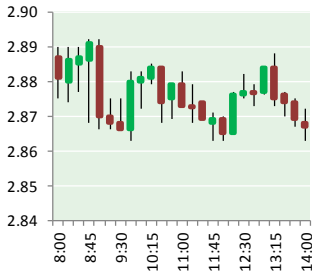


# NATURAL GAS



JULY 7, 2017

## Prior Day's NYMEX Jul-17 Contract (CT)



## NYMEX NG Futures

Month	Close	Change
Aug-17	2.888	0.048
Sep-17	2.881	0.044
Oct-17	2.908	0.043
Nov-17	2.967	0.039
Dec-17	3.122	0.037
Jan-18	3.217	0.036
Feb-18	3.204	0.036
Mar-18	3.149	0.033
Apr-18	2.790	0.021
May-18	2.757	0.015
Jun-18	2.784	0.013
Jul-18	2.812	0.012
Aug-18	2.820	0.012
Sep-18	2.797	0.012
Oct-18	2.815	0.010
Nov-18	2.863	0.009
Dec-18	2.993	0.009
Jan-19	3.080	0.009
Feb-19	3.053	0.007
Mar-19	2.989	0.005
Apr-19	2.657	(0.004)
May-19	2.633	(0.004)
Jun-19	2.660	(0.006)
Jul-19	2.690	(0.006)
1YR Strip	2.957	0.031
2017	2.953	0.042
5YR Strip	2.845	(0.001)

## IN THE NEWS

Kenworth broadens availability of natural gas engines — American Trucker reports: Kenworth Truck Co. is broadening the availability of the 8.9-liter Cummins Westport ISL G "near zero NOx"

- Kenworth broadens availability of natural gas engines
- Trump pitches US natural gas to European leaders, suggests Russian gas holds them hostage

natural gas engine among its truck models. Rated at 320 hp and 1,000 lb-ft of torque, the exhaust emissions of the Cummins Westport ISL G NZ are 90% lower than the current Environmental Protection Agency (EPA) and California Air Resources Board (CARB) NOx limit of 0.2 g/bhp-hr (grams per brake horsepower hour) and also meet the 2017 EPA greenhouse gas (GHG) emission requirements, according to the OEM. Kenworth is making this engine available on its T680 on-highway tractor plus and T880 and T880S vocational model. The company added that its engine operates on 100% natural gas, which can be carried on the vehicle in either compressed natural gas (CNG) or liquefied natural gas (LNG) form and is also compatible with renewable natural gas (RNG). For more on this story visit [trucker.com](http://trucker.com) or click the following link <http://bit.ly/2tWytqw>

Trump pitches US natural gas to European leaders, suggests Russian gas holds them hostage — CNBC reports: President Donald Trump on Thursday pitched U.S. energy exports to Europe as an alternative to supplies from Russia, a nation he suggested had held the region hostage in the past. Trump made the comments in Warsaw, Poland, where he attended a meeting of the Three Seas Initiative, an effort by 12 Central and Eastern European nations to increase trade, infrastructure and energy ties. Many of the Three Seas nations remain highly dependent on Russia for natural gas. For more on this story visit [cnb.com](http://cnb.cx/2sRtqmp) or click the following link <http://cnb.cx/2sRtqmp>

## 12 MONTH CANDLESTICK (WEEKLY)



## Prompt Natural Gas (NG) Daily Sentiment BEARISH



RESISTANCE  
2.90 & 2.92  
SUPPORT  
2.86 & 2.83

## Trading Summary

### NATURAL GAS

Futures	Close	Change
NG	2.888	0.048
Volume	300,070	3,289
Open Int.	1,232,601	19,568

### CRUDE AND GASOLINE

Futures	Close	Change
Crude	45.52	0.39
RBOB	1.5287	0.0263
Crude/NG	15.76	(0.13)

### METALS

Futures	Close	Change
Gold	1,223.30	(0.90)

### EQUITIES

Exchange	Close	Change
DOW	21,320.04	(158.13)
S&P 500	2,294.62	(137.92)

### CURRENCY

Currency	Close	Change
EUR/USD	1.1465	0.0079
USD/CND	1.2975	(0.0003)

## Contact Us



**Mansfield Energy Corp**  
1025 Airport Pkwy  
Gainesville, GA 30501

[www.mansfield.energy](http://www.mansfield.energy)

[info@mansfieldoil.com](mailto:info@mansfieldoil.com)

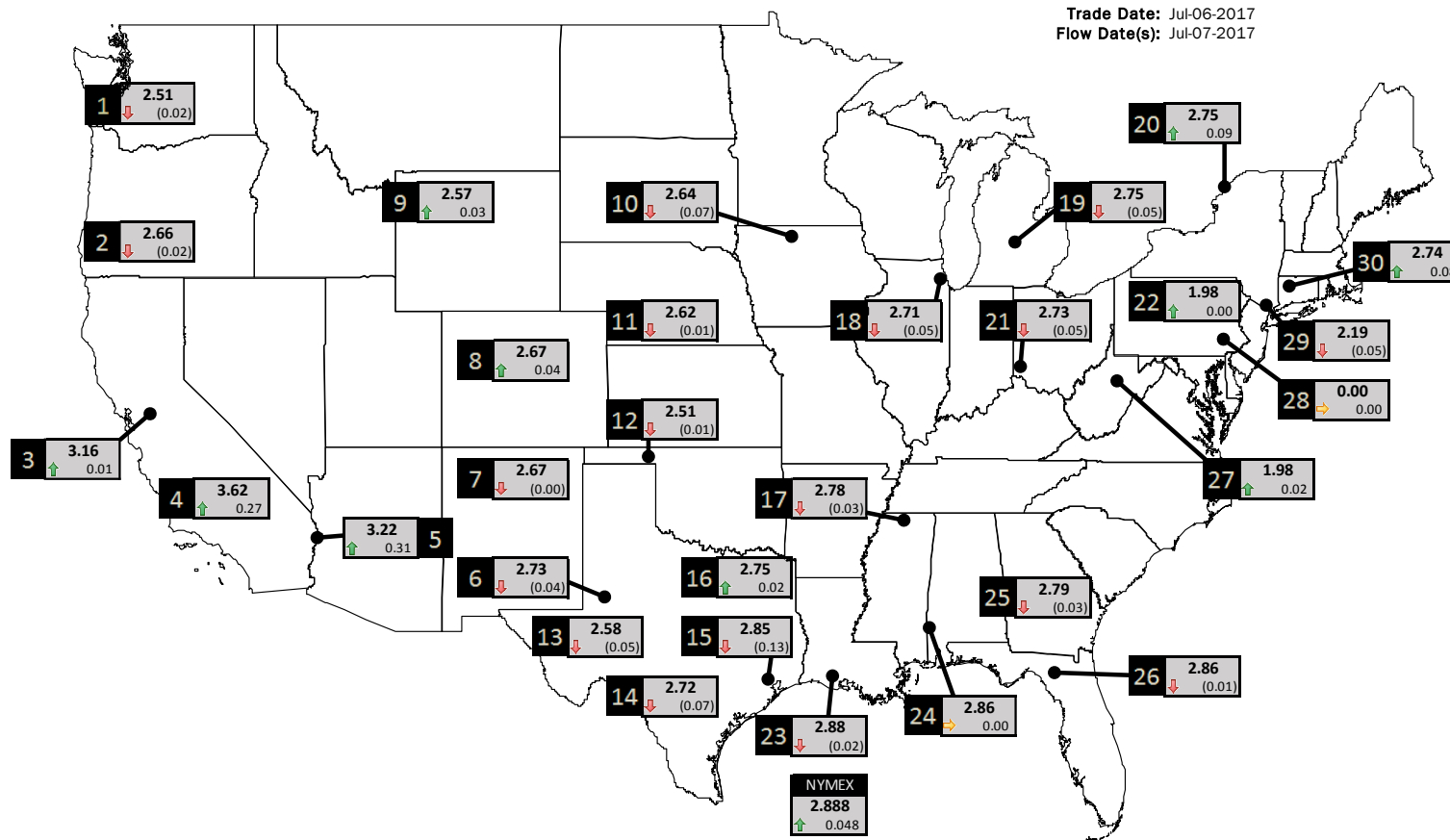
Phone: (800) 695-6626



# NATURAL GAS NEWS

## PHYSICAL SPOT NATURAL GAS PRICE MAP

Trade Date: Jul-06-2017  
Flow Date(s): Jul-07-2017



ICE DATA

ID	DAILY INDEX	PRICE	CHANGE
1	Stanfield	2.51	(0.02)
2	Malin	2.66	(0.02)
3	PG&E - Citygate	3.16	0.01
4	SoCal-Citygate	3.62	0.27
5	SoCal Border	3.22	0.31
6	Waha	2.73	(0.04)
7	EPSJ Blanco Pool	2.67	(0.00)
8	Opal Plant Tailgate	2.67	0.04
9	NWP-Wyoming	2.57	0.03
10	Ventura	2.64	(0.07)

ID	DAILY INDEX	PRICE	CHANGE
11	NGPL-Midcont Pool	2.62	(0.01)
12	Panhandle	2.51	(0.01)
13	EP-Permian	2.58	(0.05)
14	TGP-ZO	2.72	(0.07)
15	Houston Ship Channel	2.85	(0.13)
16	NGPL-TXOK	2.75	0.02
17	TETCO-M1 30	2.78	(0.03)
18	Chicago Citygates	2.71	(0.05)
19	Michcon	2.75	(0.05)
20	Iroquois (into)	2.75	0.09

ID	DAILY INDEX	PRICE	CHANGE
21	REX E-ANR	2.73	(0.05)
22	Leidy-Transco	1.98	0.00
23	Henry	2.88	(0.02)
24	Transco-85	2.86	0.00
25	Sonat-ZO South	2.79	(0.03)
26	FGT-Z3	2.86	(0.01)
27	Dominion-South	1.98	0.02
28	Transco-Z6 (non-NY)	0.00	0.00
29	Transco-Z6 (NY)	2.19	(0.05)
30	Iroquois-Z2	2.74	0.08

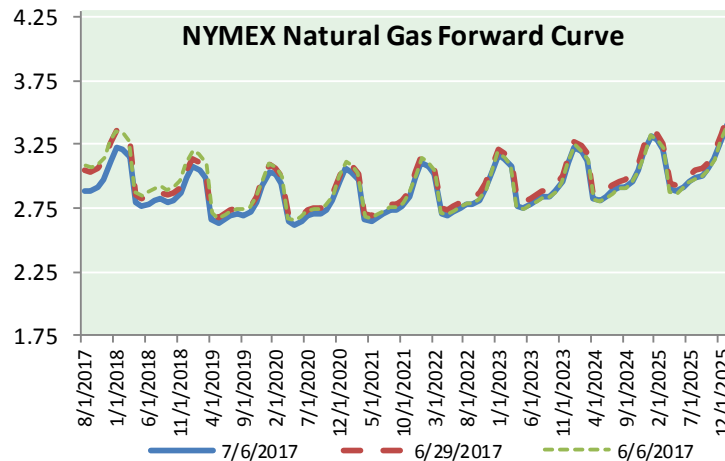
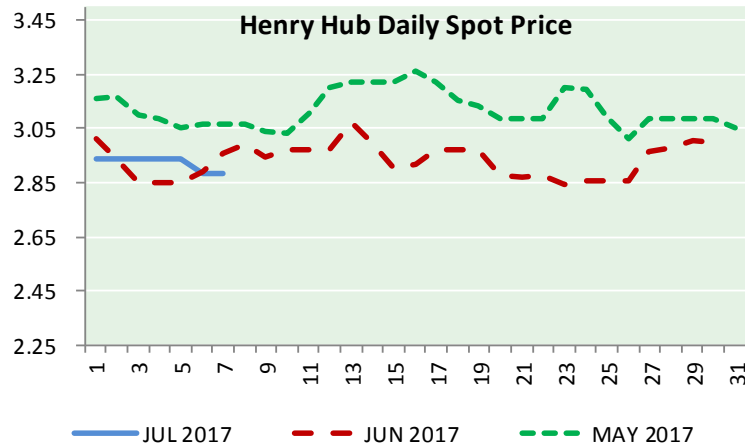
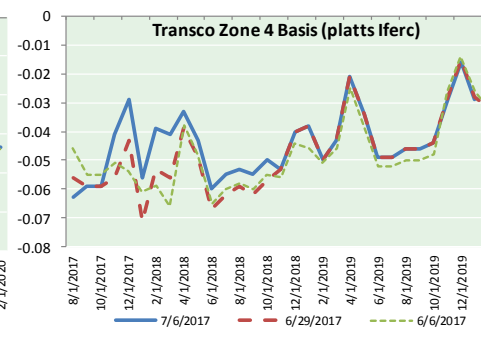
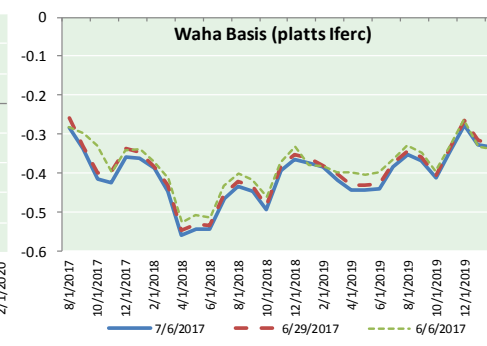
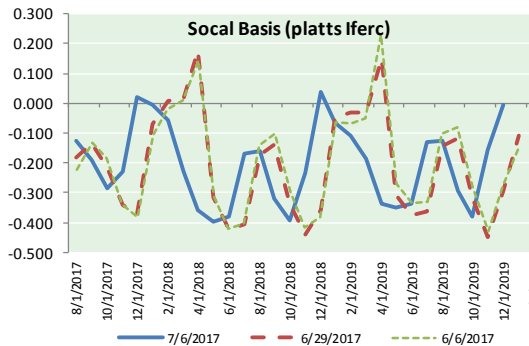
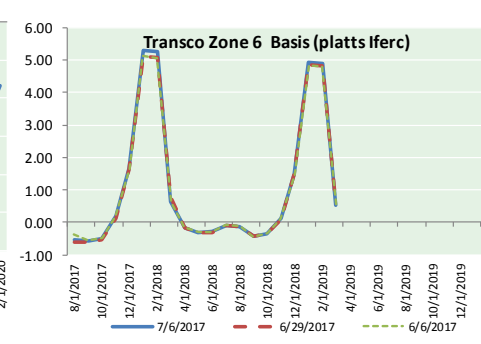
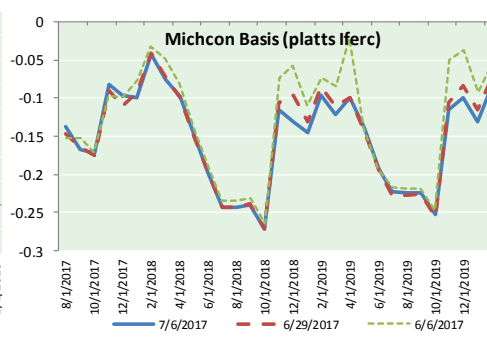
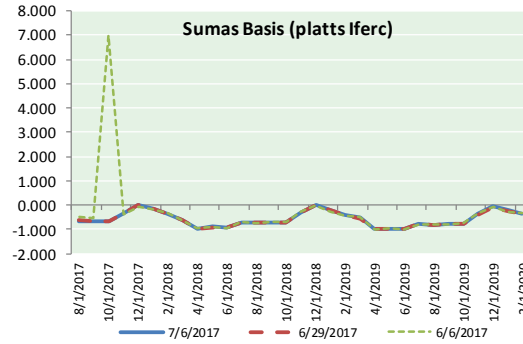
DISCLAIMER: The content herein is privileged and confidential. Content is presented for informational purposes and is a reflection of the market opinions of its authors subject to change without notice. Content is derived from sources believed to be accurate at the time of release but carries no guarantee of accuracy or completeness. Mansfield Energy Corp and its clients may or may not take positions similar or opposite those discussed herein. The reader should realize that the trading of commodities involves risk, and the reader assumes all responsibility for the risk of financial losses.





# NATURAL GAS NEWS

## NATURAL GAS BASIS FUTURES, HENRY HUB SPOT PRICES, AND FORWARD CURVE



### CME NG Option Prices

#### ATM Call

Month	Strike	Close	Imp Vol
Aug-17	2.900	0.113	37.5
Sep-17	2.900	0.141	30.0
Oct-17	2.950	0.174	31.9
Nov-17	3.000	0.212	31.9
Dec-17	3.150	0.253	31.9
Jan-18			
Feb-18			
Mar-18			
Apr-18			
May-18			
Jun-18			
Jul-18			
Aug-18			
Sep-18			
Oct-18			
Nov-18			
Dec-18			

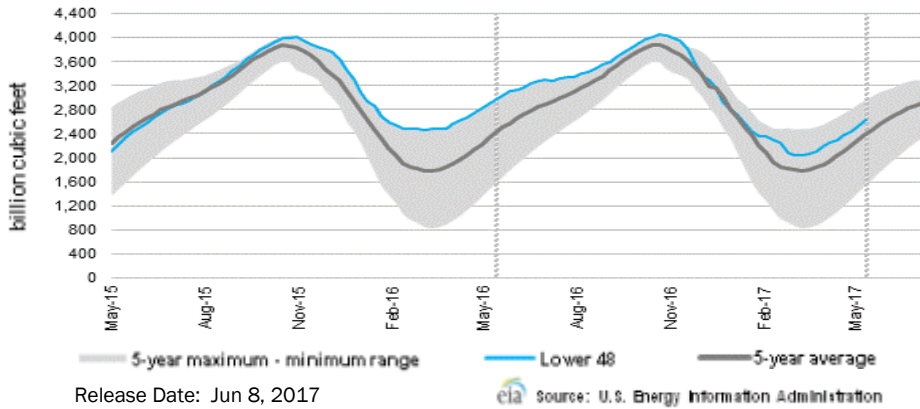
### CME NG Option Prices

#### ATM Put

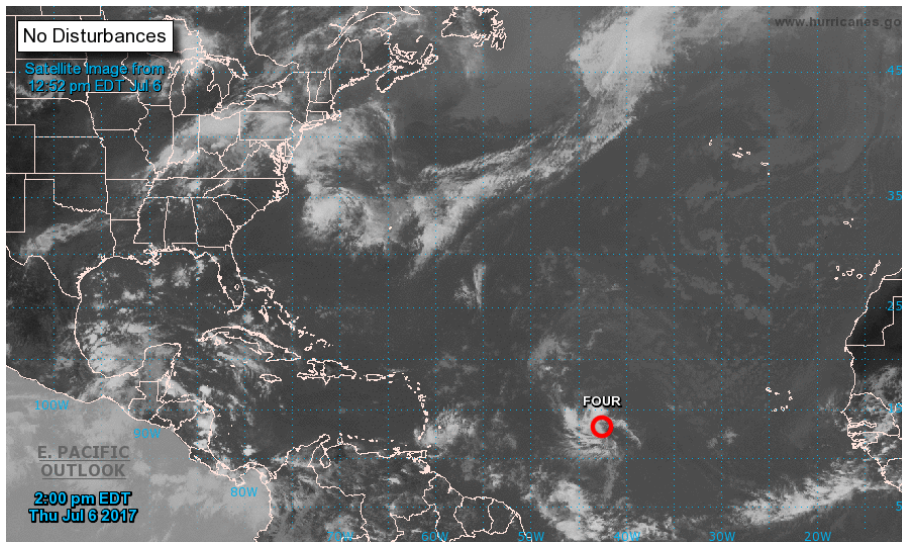
Month	Strike	Close	Imp Vol
Aug-17	2.900	0.108	45.0
Sep-17	2.900	0.166	39.4
Oct-17	2.950	0.213	37.5
Nov-17	3.000	0.237	35.6
Dec-17	3.150	0.251	31.9
Jan-18			
Feb-18			
Mar-18			
Apr-18			
May-18			
Jun-18			
Jul-18			
Aug-18			
Sep-18			
Oct-18			
Nov-18			
Dec-18			

# NATURAL GAS NEWS

## WEEKLY GAS IN UNDERGROUND STORAGE WITH 5-YR RANGE



## TROPICAL STORM ACTIVITY— ATLANTIC



For the North Atlantic...Caribbean Sea and the Gulf of Mexico:

The National Hurricane Center is issuing advisories on Tropical Depression Four, located well to the east of the Lesser Antilles.

Tropical cyclone formation is not expected during the next 5 days.

&&

Public Advisories on Tropical Depression Four are issued under WMO header WTNT34 KNHC and under AWIPS header MIATCPAT4. Forecast/Advisories on Tropical Depression Four are issued under WMO header WTNT24 KNHC and under AWIPS header MIATCMAT4.

Forecaster Roberts

## Rig Count

Report Date: June 30, 2017

	Total	Change
US -	940	(1)
CN -	189	+19

## EIA Weekly NG Storage Actual and Surveys for June 23, 2017

Released June 29, 2017

PIRA — +54  
 ARM — +44  
 Reuters — +49

EIA ACTUAL — +61

## Total Working Gas In Storage

**2,816 BCF**

+46 BCF (LAST WEEK)  
 (319) BCF (LAST YEAR)  
 +181 BCF (5-YR AVG)

## U.S. Natural Gas Supply Gas Week 6/29 - 7/5

Average daily values (BCF/D):

Last Year (BCF/d)

Dry Production — +71.2

Total Supply — +77.3

Last Week (BCF/d)

Dry Production — +71.6

Total Supply — +77.3

[NEXT REPORT ON JUL 13]

## U.S. Natural Gas Demand Gas Week 6/29 - 7/5

Average daily values (BCF/D):

Last Year (BCF/d)

Power — +58.6

Total Demand — +69.6

Last Week (BCF/d)

Power — +56.7

Total Demand — +68.9

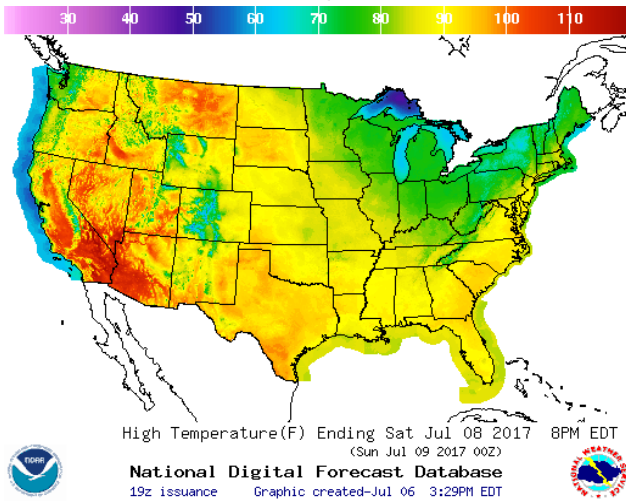
[NEXT REPORT ON JUL 13]



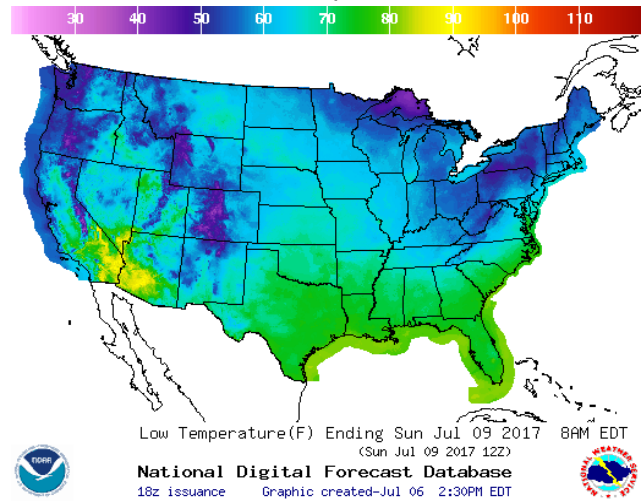
# NATURAL GAS NEWS

## WEATHER – HIGH / LOW TEMPERATURE SATURDAY

### HIGH Temperature

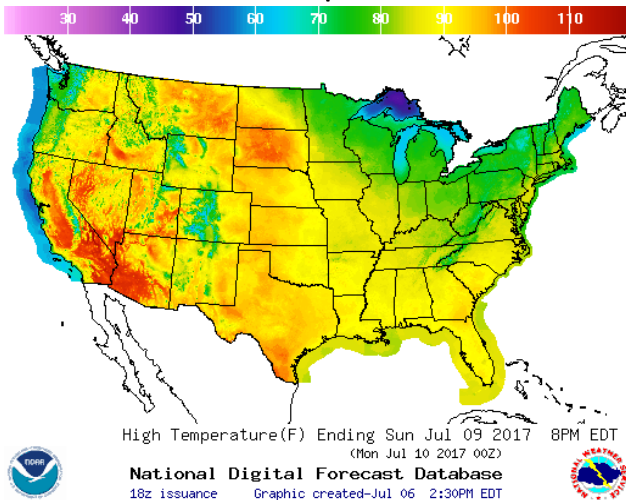


### LOW Temperature

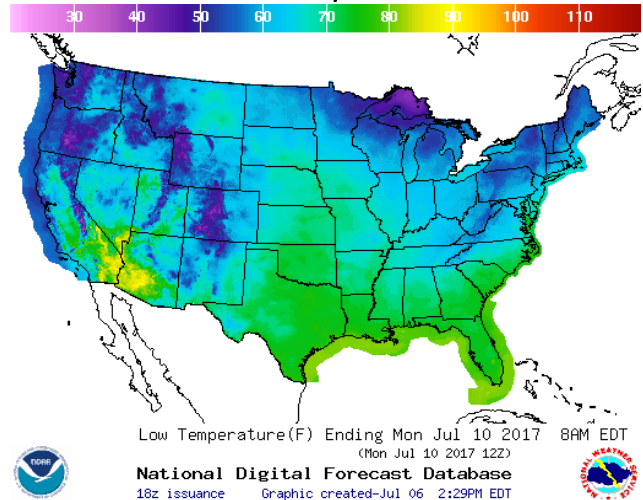


## WEATHER – HIGH / LOW TEMPERATURE SUNDAY

### HIGH Temperature

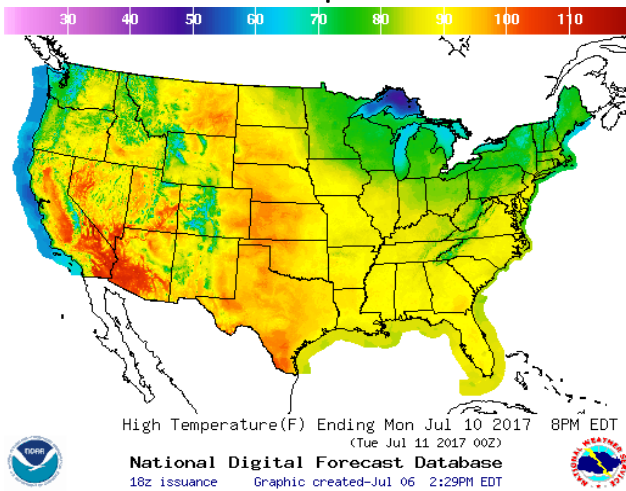


### LOW Temperature

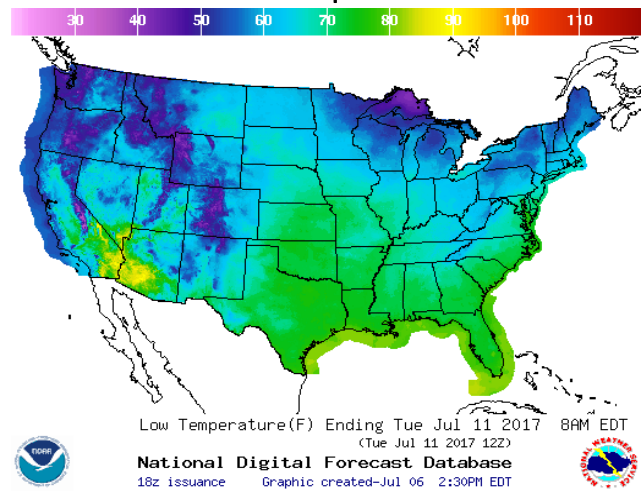


## WEATHER – HIGH / LOW TEMPERATURE MONDAY

### HIGH Temperature

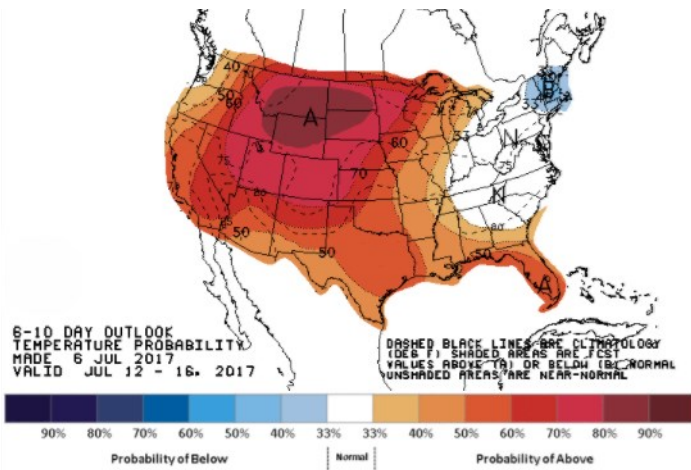


### LOW Temperature

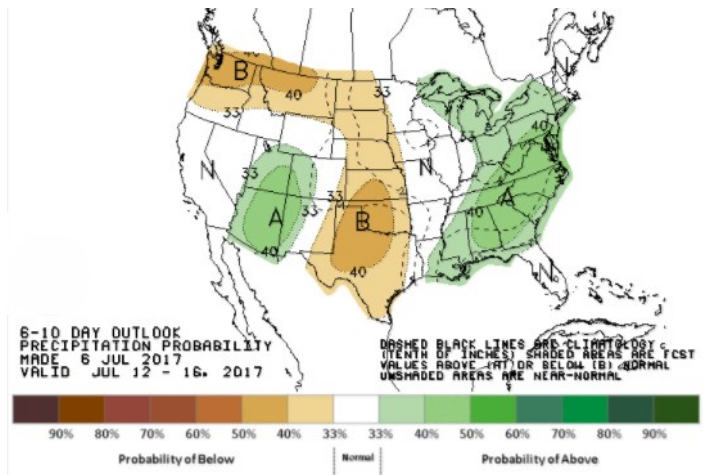


NATURAL GAS NEWS

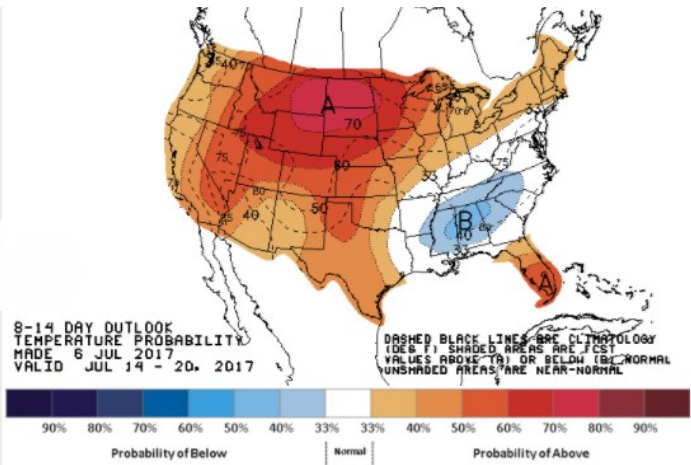
WEATHER — 6 TO 10 DAY OUTLOOK — NOAA  
Temperature



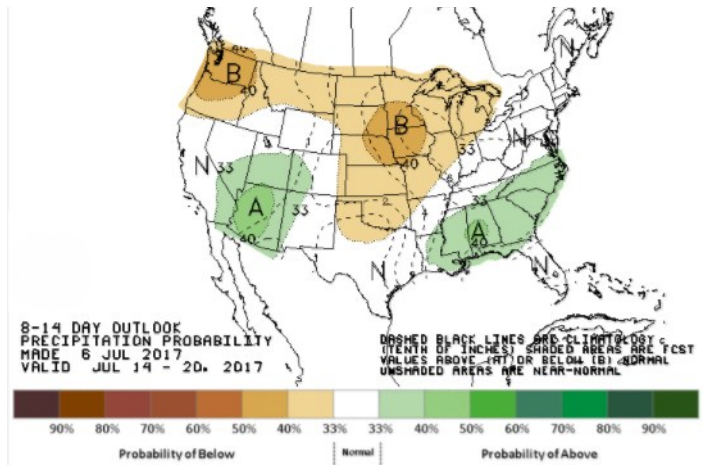
Precipitation



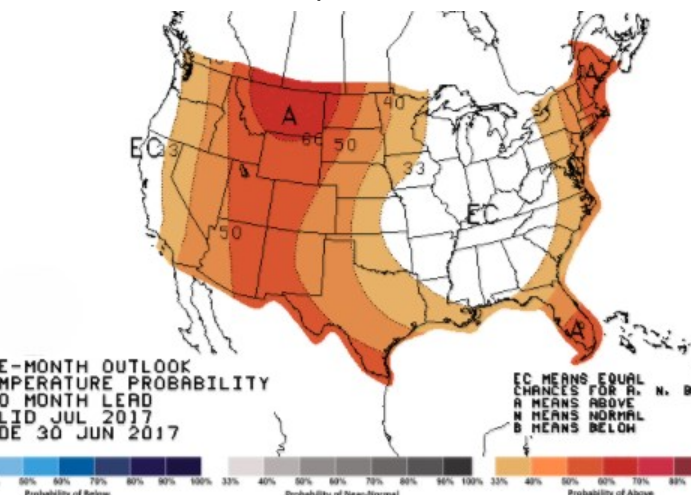
WEATHER — 8 TO 14 DAY OUTLOOK — NOAA  
Temperature



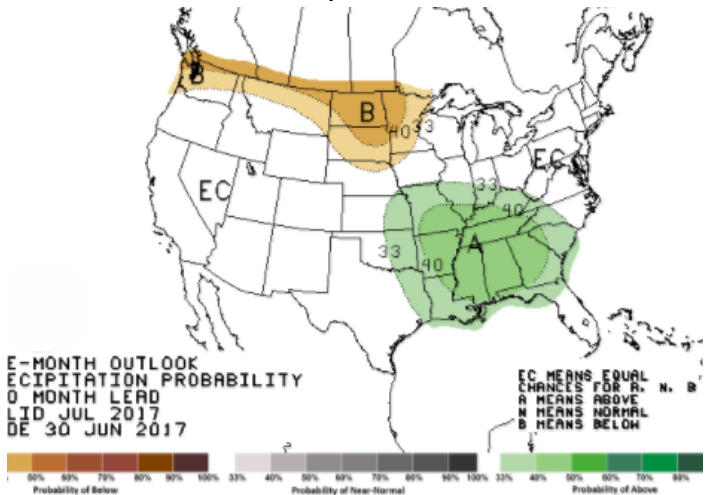
Precipitation



WEATHER — 30 DAY OUTLOOK — NOAA  
Temperature

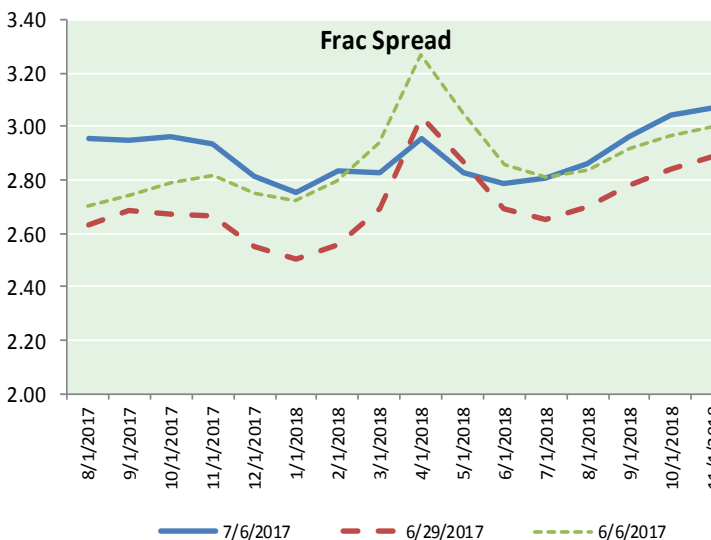
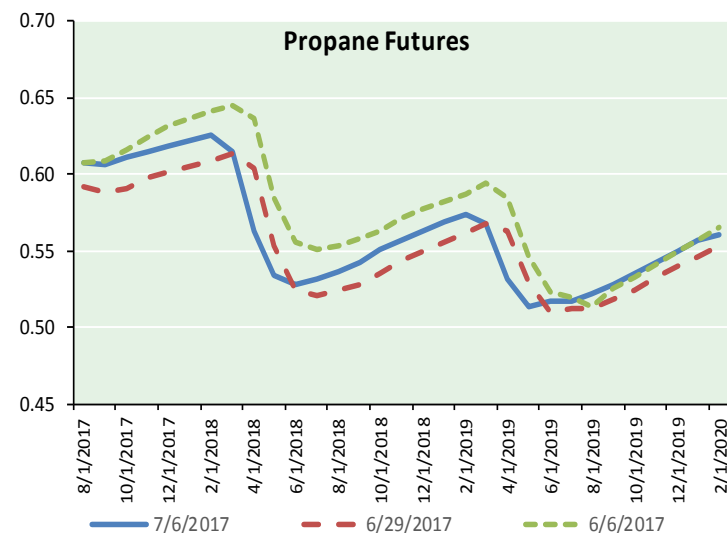
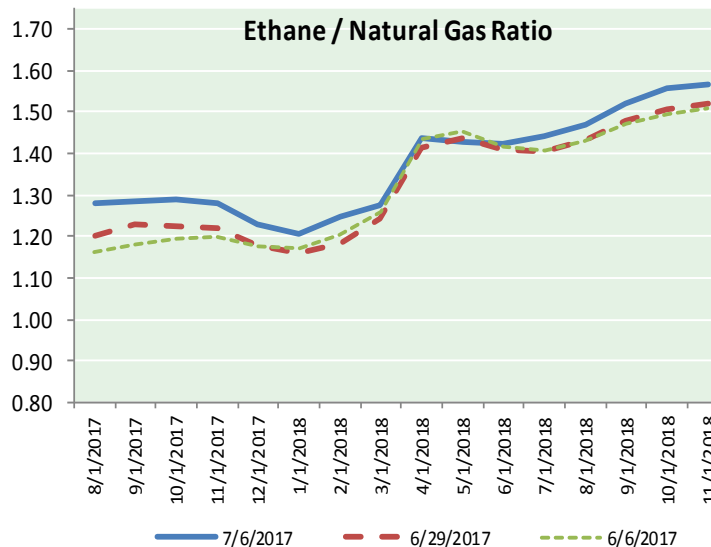
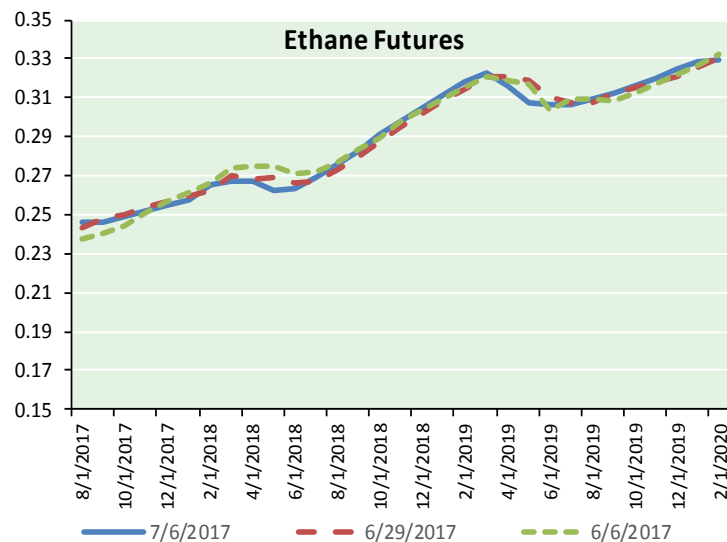


Precipitation





ETHANE FUTURES, NG/ETHANE RATIO, PROPANE FUTURES, AND THE FRAC SPREAD



CME Future Prices

Ethane (C2)

Non-LDH— Mont Belvieu

Month	Close	Change
Aug-17	0.246	0.004
Sep-17	0.246	0.004
Oct-17	0.249	0.003
Nov-17	0.252	0.003
Dec-17	0.255	0.003
Jan-18	0.258	0.003
Feb-18	0.266	0.003
Mar-18	0.267	0.003
Apr-18	0.267	0.003
May-18	0.262	0.003
Jun-18	0.263	0.003
Jul-18	0.269	0.003

1YR Strip 0.258 0.003

CME Future Prices

Propane (C3)

Non-LDH— Mont Belvieu

Month	Close	Change
Aug-17	0.607	0.005
Sep-17	0.607	0.004
Oct-17	0.611	0.004
Nov-17	0.615	0.002
Dec-17	0.619	0.003
Jan-18	0.623	0.003
Feb-18	0.626	0.002
Mar-18	0.614	0.002
Apr-18	0.564	0.006
May-18	0.534	0.005
Jun-18	0.529	0.005
Jul-18	0.532	0.005

1YR Strip 0.590 0.004



# NATURAL GAS NEWS



**Prompt WTI (CL) Crude**  
**Daily Sentiment**  
**BEARISH**



RESISTANCE  
 46.31 & 47.09  
 SUPPORT  
 44.96 & 44.39

**FOLLOW US ON TWITTER:**



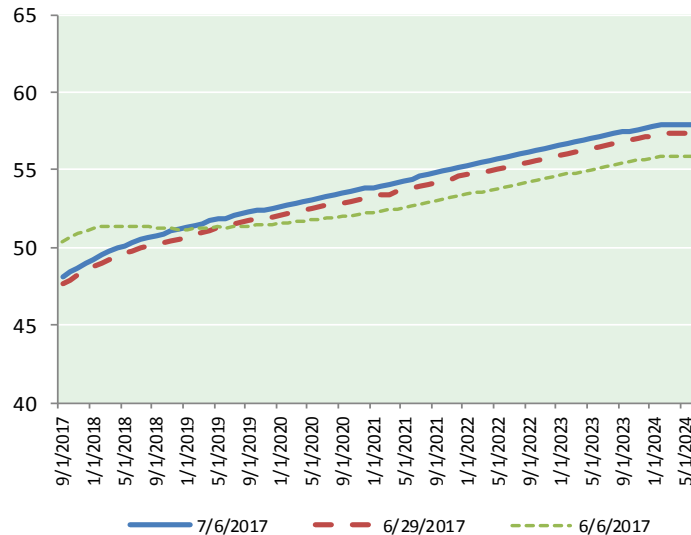
@MPG\_NatGasNews

## NYMEX Brent (BZ)

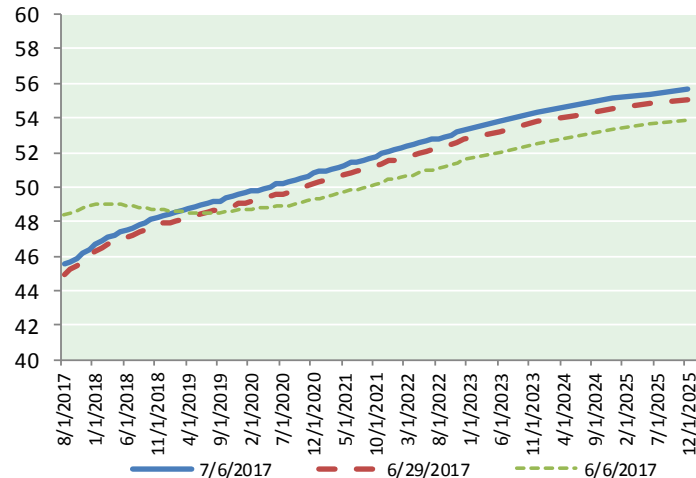
### Futures

Month	Close	Change
Sep-17	48.11	0.32
Oct-17	48.39	0.32
Nov-17	48.68	0.30
Dec-17	48.97	0.29
Jan-18	49.26	0.29
Feb-18	49.50	0.27
Mar-18	49.73	0.26
Apr-18	49.95	0.26
May-18	50.14	0.25
Jun-18	50.30	0.23
Jul-18	50.49	0.22
Aug-18	50.65	0.20
Sep-18	50.79	0.20
Oct-18	50.91	0.19
Nov-18	51.03	0.18
Dec-18	51.15	0.17
Jan-19	51.27	0.16
Feb-19	51.40	0.15
Mar-19	51.53	0.13
Apr-19	51.69	0.12
May-19	51.80	0.10
Jun-19	51.89	0.10
Jul-19	52.03	0.09
Aug-19	52.14	0.08
1YR Strip 2017	49.51	0.27
5YR Strip	52.74	0.12

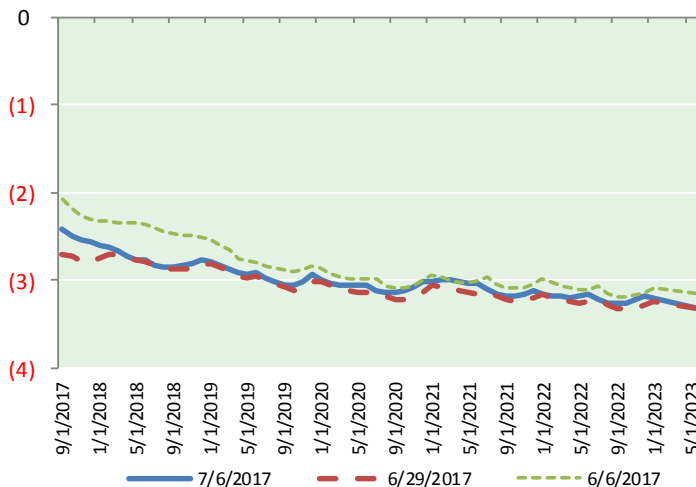
## BRENT CRUDE FORWARD CURVE



## WTI CRUDE FORWARD CURVE



## WTI-BRENT SPREAD



## FRAC Spread

### Specifications

Ethane : 42% 66,500 btu/g  
 Propane: 28% 90,830 btu/g  
 Butane: 11% 102,916 btu/g  
 Iso-Butane: 6% 98,935 btu/g  
 Natural Gasoline: 13%  
 115,021 btu/g

## Prompt NGL Futures

(\$/gallon)

Aug-17	Close	Change
Butane	0.753	0.011
Iso-Butane	0.750	0.002
Nat Gasoline	1.022	0.008

## NYMEX WTI (CL) Futures

Month	Close	Change
Aug-17	45.52	0.39
Sep-17	45.70	0.36
Oct-17	45.89	0.34
Nov-17	46.13	0.32
Dec-17	46.40	0.30
Jan-18	46.66	0.28
Feb-18	46.88	0.27
Mar-18	47.07	0.26
Apr-18	47.23	0.24
May-18	47.38	0.23
Jun-18	47.53	0.22
Jul-18	47.66	0.21
Aug-18	47.80	0.20
Sep-18	47.94	0.19
Oct-18	48.08	0.17
Nov-18	48.23	0.16
Dec-18	48.38	0.15
Jan-19	48.48	0.14
Feb-19	48.58	0.13
Mar-19	48.67	0.11
Apr-19	48.78	0.10
May-19	48.87	0.09
Jun-19	48.98	0.07
Jul-19	49.05	0.06
1YR Strip 2017	46.67	0.29
5YR Strip	49.65	0.09