

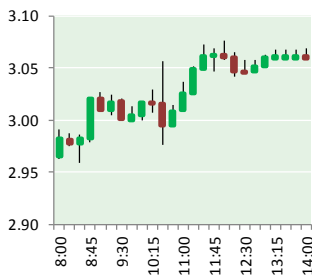
# NATURAL GAS



NEWS

JANUARY 12, 2018

## Prior Day's NYMEX Jan-18 Contract (CT)



## NYMEX NG Futures

Month	Close	Change
Feb-18	3.084	0.178
Mar-18	2.925	0.103
Apr-18	2.770	0.061
May-18	2.759	0.048
Jun-18	2.795	0.045
Jul-18	2.835	0.043
Aug-18	2.835	0.040
Sep-18	2.814	0.037
Oct-18	2.832	0.032
Nov-18	2.884	0.028
Dec-18	3.007	0.024
Jan-19	3.083	0.019
Feb-19	3.057	0.017
Mar-19	2.982	0.013
Apr-19	2.700	0.008
May-19	2.664	0.007
Jun-19	2.689	0.006
Jul-19	2.715	0.006
Aug-19	2.716	0.006
Sep-19	2.699	0.005
Oct-19	2.723	0.004
Nov-19	2.771	0.003
Dec-19	2.903	(0.004)
Jan-20	3.010	(0.004)
1YR Strip	2.885	0.055
2018	2.867	0.058
5YR Strip	2.847	0.015

## IN THE NEWS

**LNG Fueling Station Market – Rising Adoption of Natural Gas to curb Greenhouse Gas Emissions Benefits Global Market** – The Edition Truth reported: TULSA – The global LNG fueling station market is discussed at length in a market intelligence by Transparency Market Research (TMR). The report, titled "LNG Fueling Station Market – Global Industry Analysis, Size, Share, Growth,

- **LNG Fueling Station Market – Rising Adoption of Natural Gas to curb Greenhouse Gas Emissions Benefits Global Market**
- **BP to pay California \$102 million to settle natural gas overcharge allegations**

Trends, and Forecast 2017 – 2025," delves into vital market indicators, economic indices, and technological advancements that are important to chart the growth trajectory of the LNG fueling station market over the 2017-2025 forecast period. The demand for natural gas as a clean fuel for vehicles is gaining momentum to rising concerns of environment conservation. At present, compressed natural gas (CNG) is most used form of natural gas in vehicles across the world. CNG is used in cars, buses, and light duty vehicles. On the other hand, economic disadvantage of CNG over diesel makes CNG unsuitable for long distance heavy duty trucks. This paves way for the adoption of liquefied natural gas, and thus driving the growth of LNG fueling station market. For more on this story visit newsok.com or click <http://bit.ly/2D76q4s>

**BP to pay California \$102 million to settle natural gas overcharge allegations** – Los Angeles Times reported: BP has agreed to pay California \$102 million as part of a settlement of allegations that it overcharged the state in sales of natural gas, Atty. Gen. Xavier Becerra said Thursday. Becerra said a whistleblower came forward to report the overcharges. The \$102 million will be divided among the state and local government agencies, the whistleblower and the Justice Department. BP denied any wrongdoing but said it moved to settle the case in part to avoid protracted, costly litigation. "As BP has stated consistently, the state's allegations were entirely without merit. BP strongly believes it honestly and fairly met its obligations under its contracts with the state." For more visit chem.info.com or click <http://lat.ms/2r0pILo>

## 12 MONTH CANDLESTICK (WEEKLY)



## Prompt Natural Gas (NG) Daily Sentiment

**BULLISH**



RESISTANCE

3.19 & 3.29

SUPPORT

2.93 & 2.78

## Trading Summary

### NATURAL GAS

Futures	Close	Change
NG	3.084	0.178
Volume	995,129	(840,772)
Open Int.	1,426,629	5,689

### CRUDE AND GASOLINE

Futures	Close	Change
Crude	63.80	0.23
RBOB	1.8370	0.0043
Crude/NG	20.69	(1.19)

### METALS

Futures	Close	Change
Gold	1,322.50	5.50

### EQUITIES

Exchange	Close	Change
DOW	25,574.73	205.60
S&P 500	2,767.56	19.33

### CURRENCY

Currency	Close	Change
EUR/USD	1.2120	0.0163
USD/CND	1.2542	0.0022

## Contact Us



**Mansfield Energy Corp**  
1025 Airport Pkwy  
Gainesville, GA 30501

[www.mansfield.energy](http://www.mansfield.energy)

[info@mansfieldoil.com](mailto:info@mansfieldoil.com)

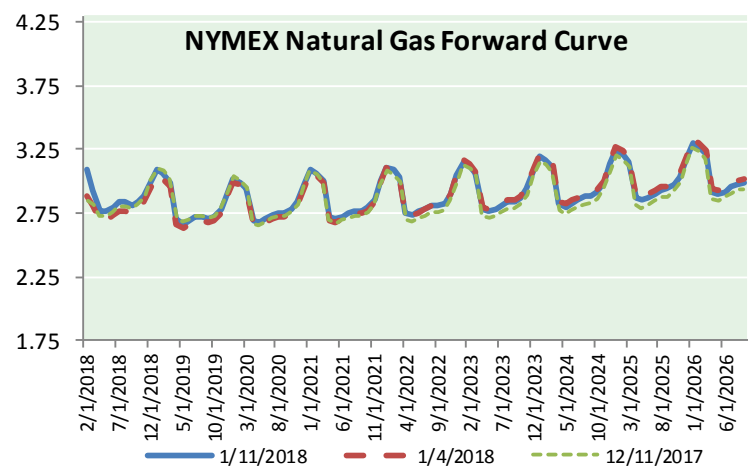
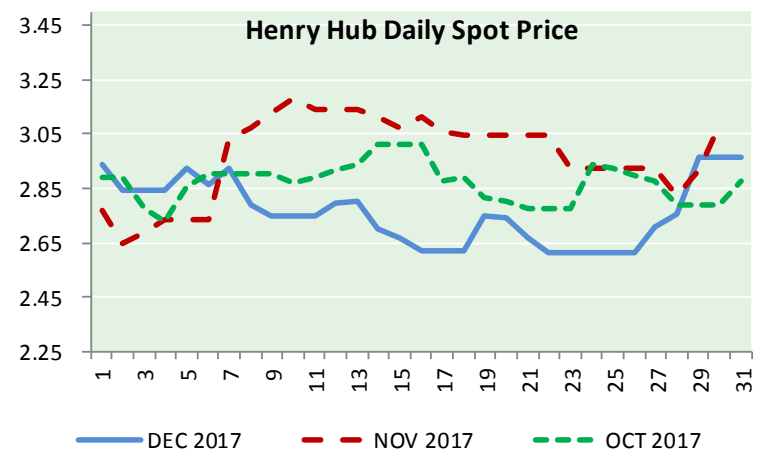
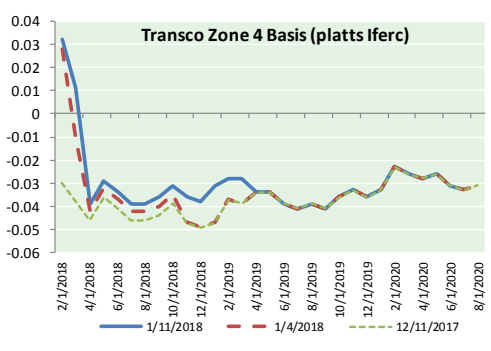
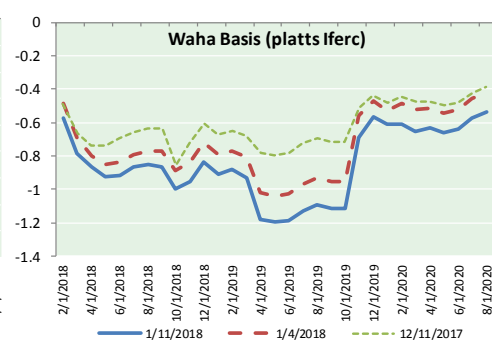
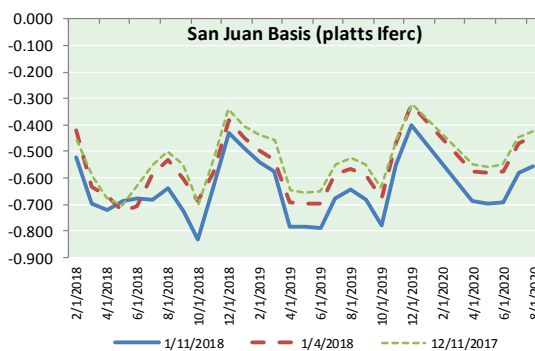
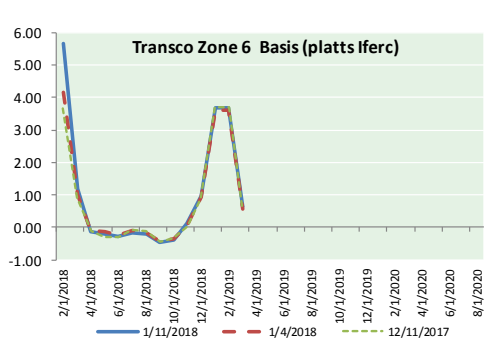
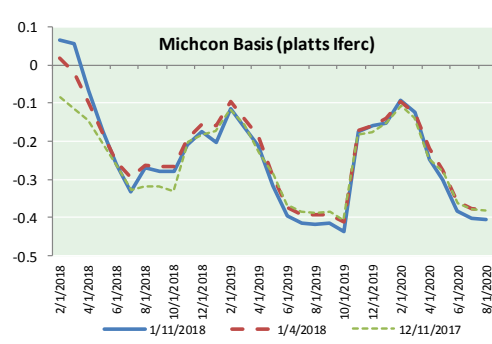
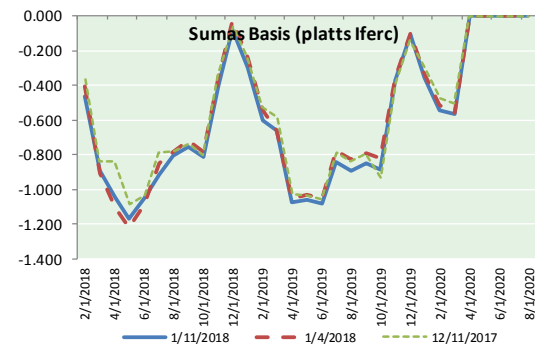
Phone: (800) 695-6626



# NATURAL GAS NEWS



## NATURAL GAS BASIS FUTURES, HENRY HUB SPOT PRICES, AND FORWARD CURVE



### NYMEX WTI Delivery

#### Month Average (\$/bbl)

(Excluding Weekends and Holidays)

Month: January 2018

Day	Price	Day	Price
1		16	
2	60.37	17	
3	61.63	18	
4	62.01	19	
5	61.44	20	
6		21	
7		22	
8	61.73	23	
9	62.96	24	
10	63.57	25	
11	63.80	26	
12		27	
13		28	
14		29	
15		30	
		31	

Average (Jan) 62.1888  
(through 01/11/2018)

Average (Dec) 57.9470

Average (Nov) 56.6629

### CME NG Option Prices

#### ATM Call

Month	Strike	Close	Imp Vol
Feb-18			
Mar-18	2.950	0.189	45.0
Apr-18			
May-18			
Jun-18			

### CME NG Option Prices

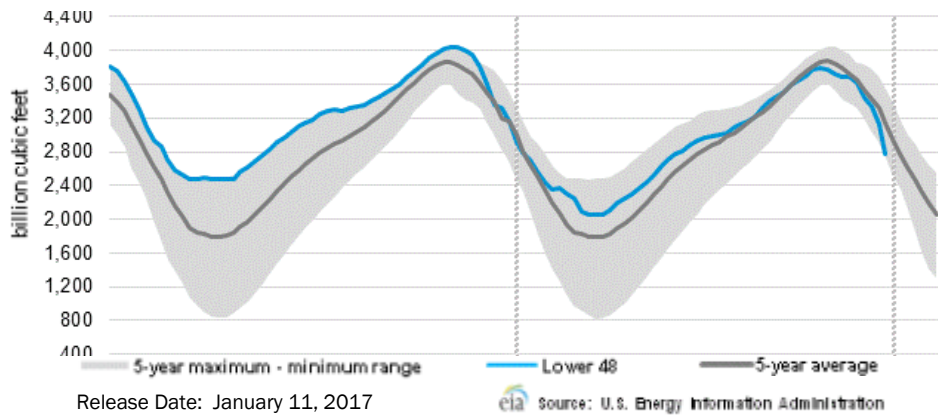
#### ATM Put

Month	Strike	Close	Imp Vol
Feb-18			
Mar-18	2.950	0.211	54.3
Apr-18			
May-18			
Jun-18			

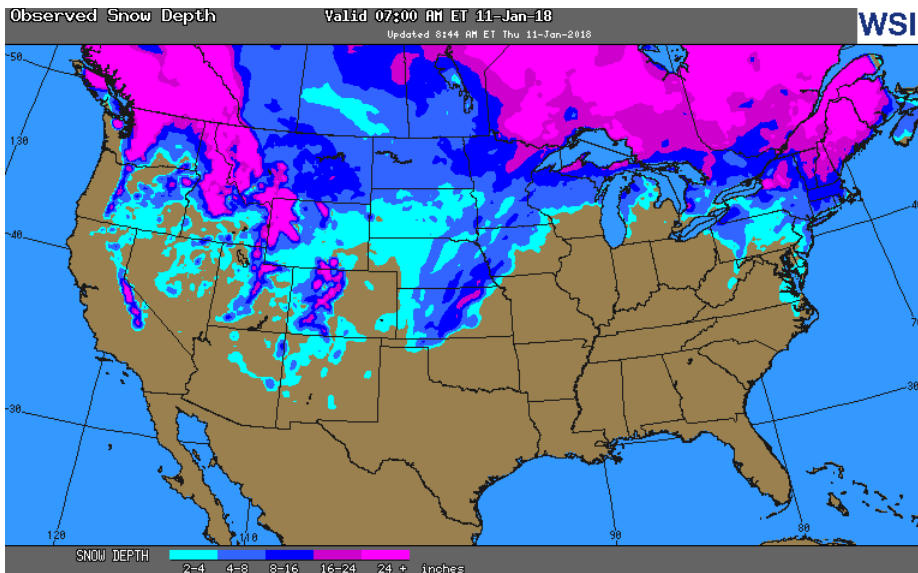


# NATURAL GAS NEWS

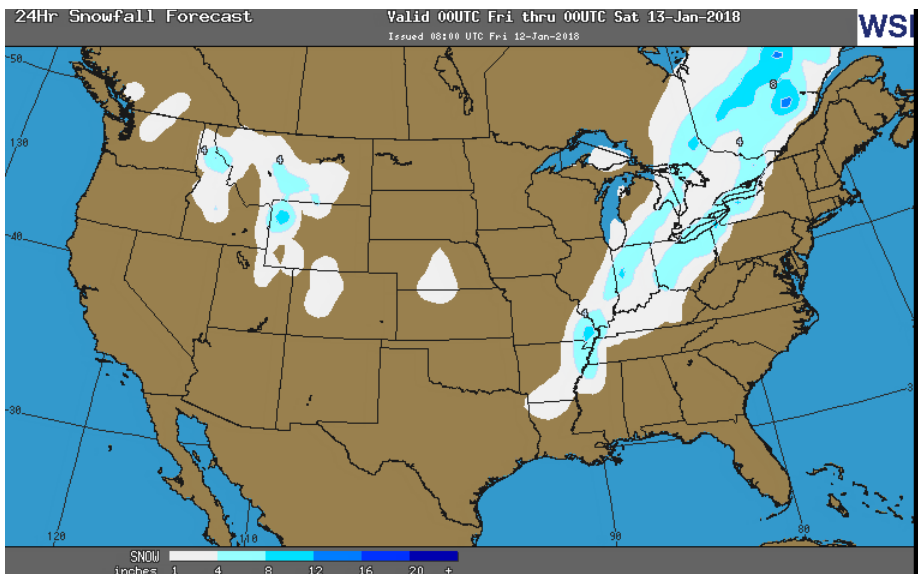
## WEEKLY GAS IN UNDERGROUND STORAGE WITH 5-YR RANGE



## OBSERVED SNOW DEPTH



## 24 HOUR SNOWFALL FORECAST



## Rig Count

Report Date: January 5, 2018

	Total	Change
US -	924	(5)
CN -	174	+38

## EIA Weekly NG Storage Actual and Surveys for December 28, 2017

Released January 4, 2018

Range (285) to (362)

PIRA – (343)

ARM – (342)

Reuters – (333)

EIA ACTUAL – (359)

## Total Working Gas In Storage

**2,767 BCF**

(359) BCF (LAST WEEK)

(415) BCF (LAST YEAR)

(482) BCF (5-YR AVG)

## U.S. Natural Gas Supply Gas Week 1/4– 1/10

Average daily values (BCF/D):

Last Year (BCF/d)

Dry Production – +69.2

Total Supply – +76.3

Last Week (BCF/d)

Dry Production – +74.2

Total Supply – +82.7

[NEXT REPORT ON Jan 18]

## U.S. Natural Gas Demand Gas Week 1/4– 1/10

Average daily values (BCF/D):

Last Year (BCF/d)

Power – +27.5

Total Demand – +120.3

Last Week (BCF/d)

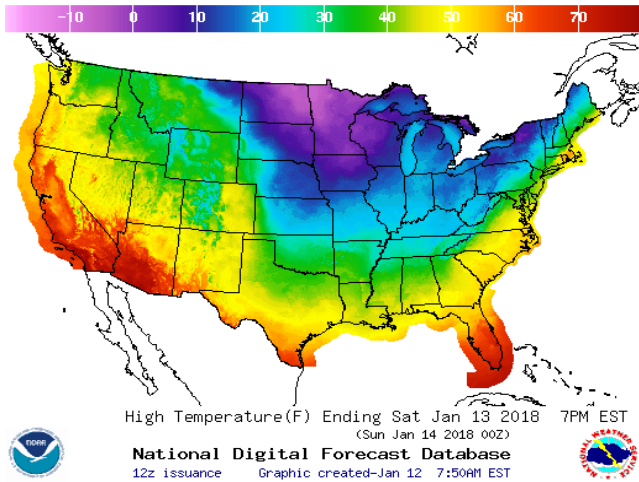
Power – +29.6

Total Demand – +136.8

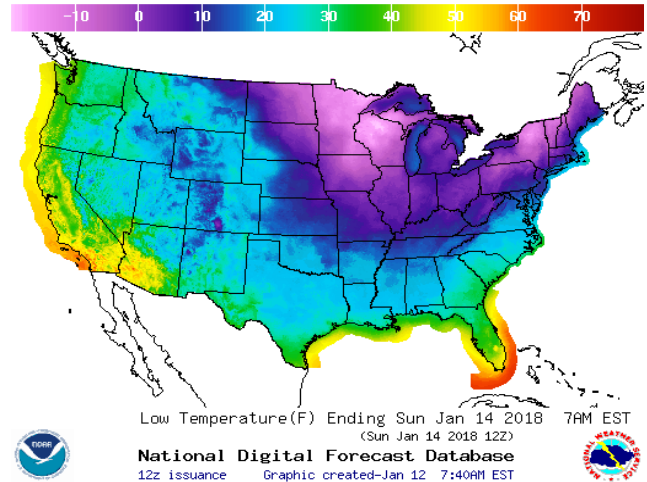
[NEXT REPORT ON Jan 18]

WEATHER – HIGH / LOW TEMPERATURE SATURDAY

HIGH Temperature

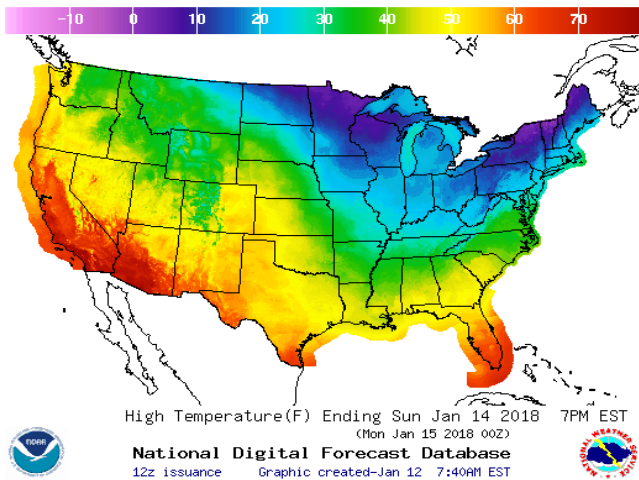


LOW Temperature

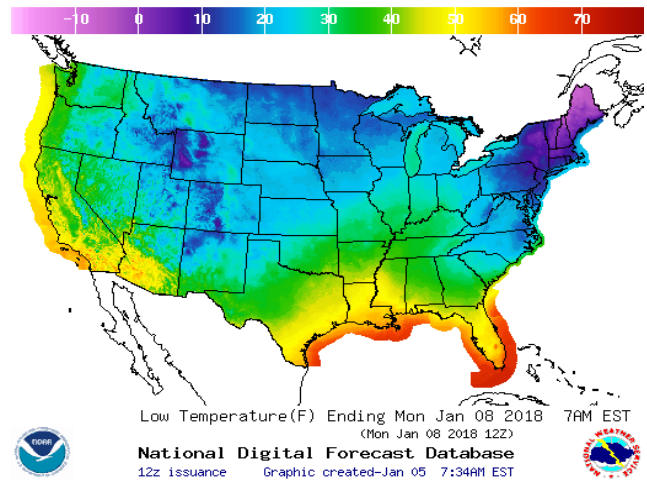


WEATHER – HIGH / LOW TEMPERATURE SUNDAY

HIGH Temperature

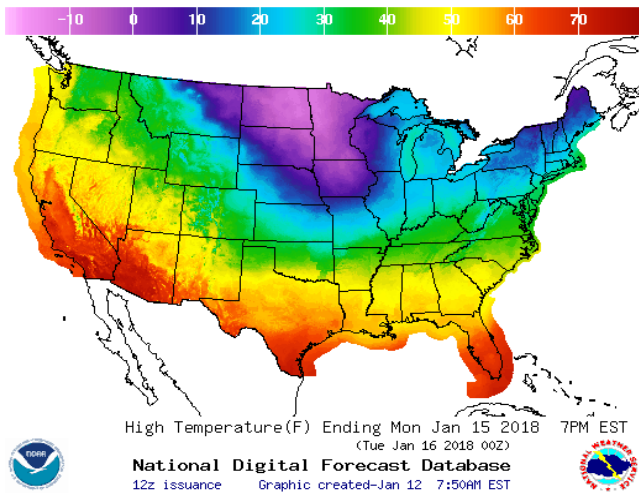


LOW Temperature

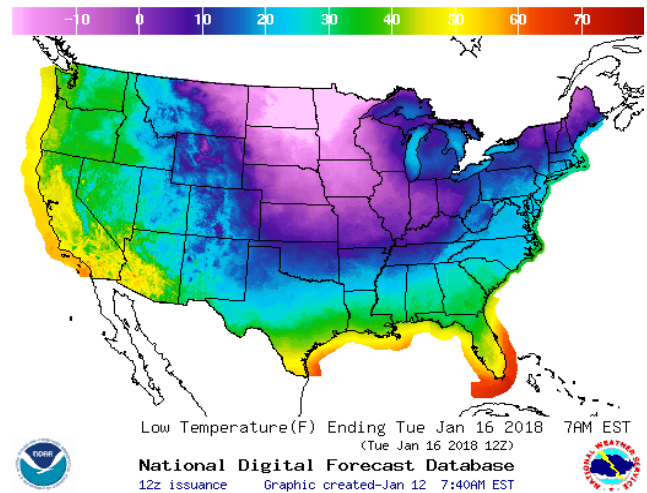


WEATHER – HIGH / LOW TEMPERATURE MONDAY

HIGH Temperature

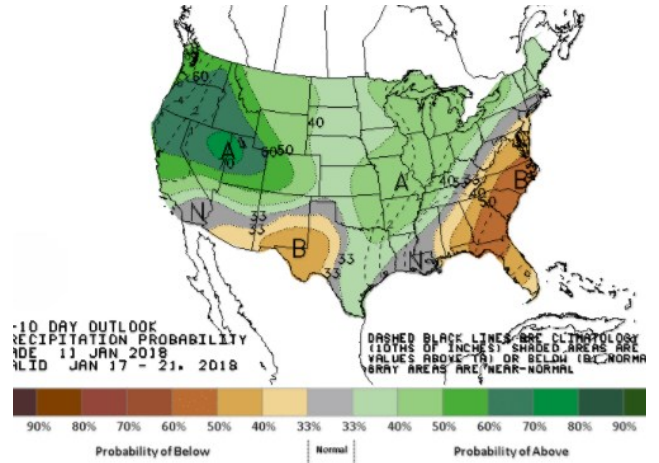
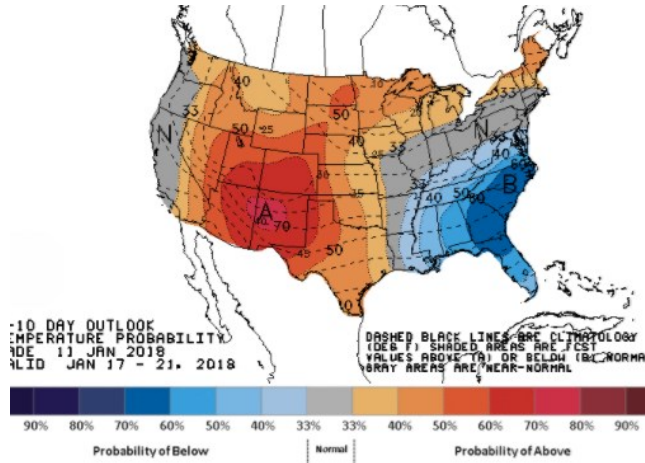


LOW Temperature



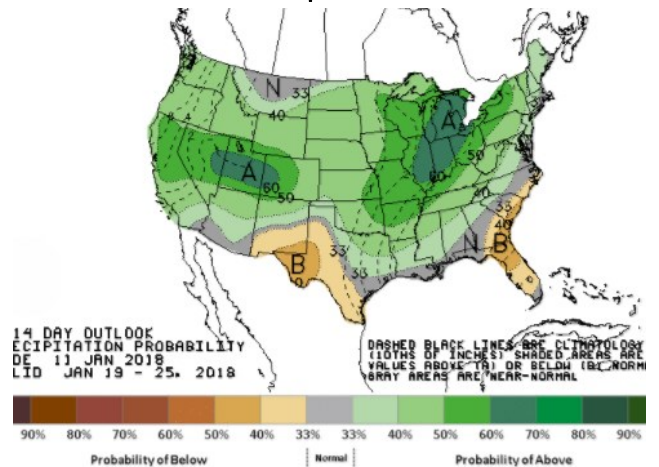
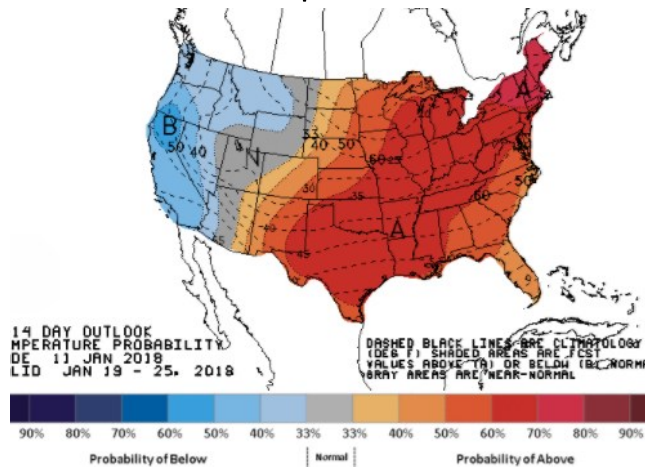
**WEATHER – 6 TO 10 DAY OUTLOOK – NOAA**  
**Temperature**

**Precipitation**



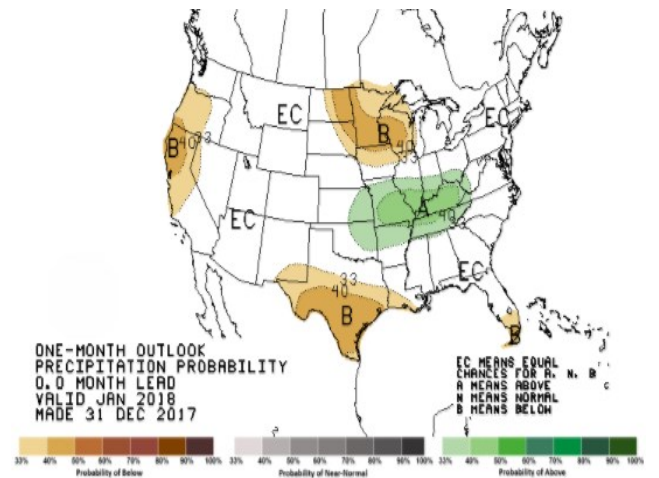
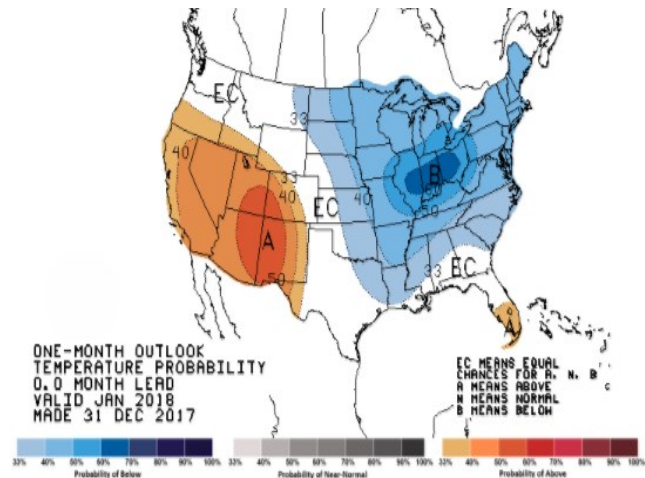
**WEATHER – 8 TO 14 DAY OUTLOOK – NOAA**  
**Temperature**

**Precipitation**



**WEATHER – 30 DAY OUTLOOK – NOAA**  
**Temperature**

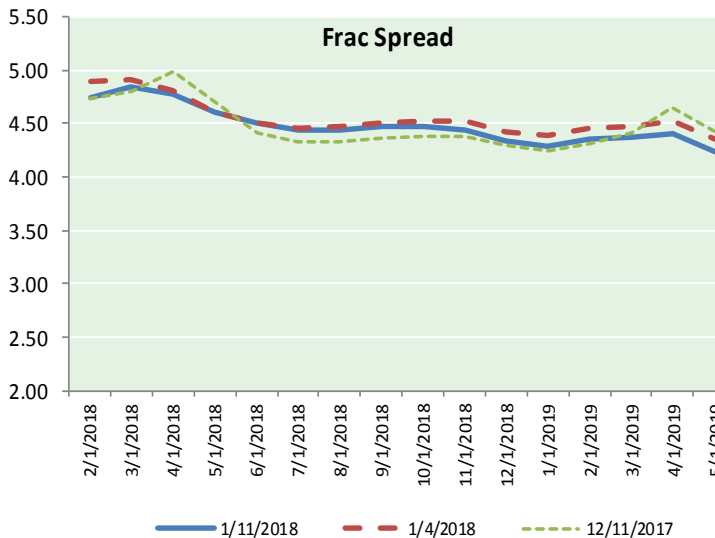
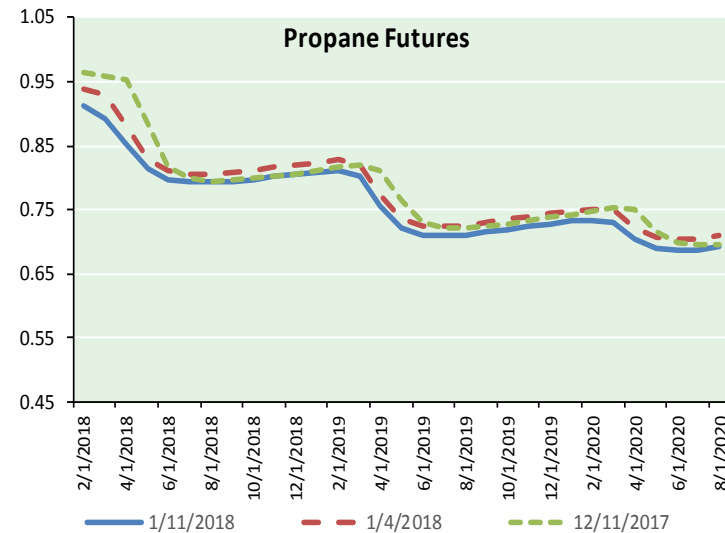
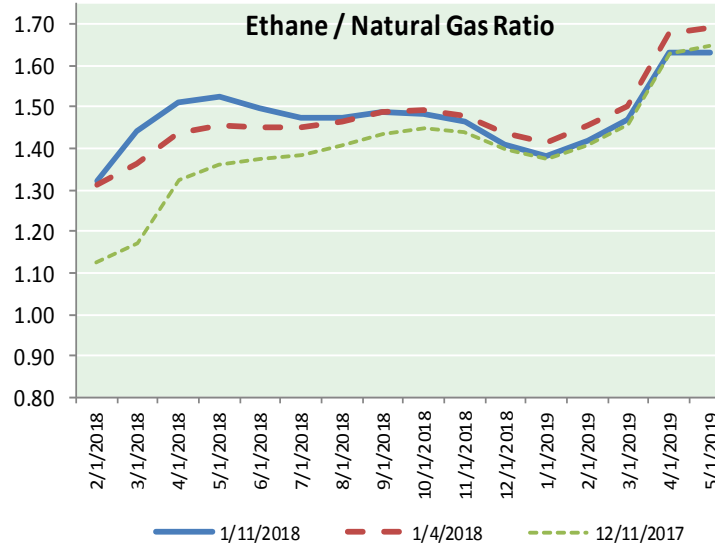
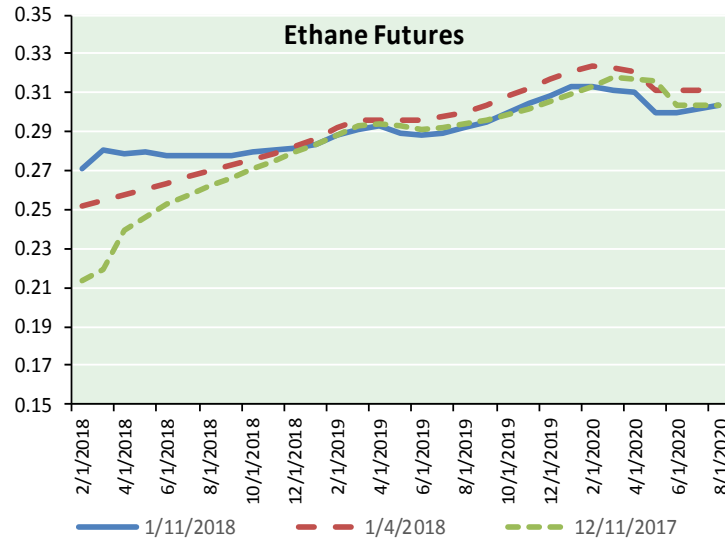
**Precipitation**





# NATURAL GAS NEWS

## ETHANE FUTURES, NG/ETHANE RATIO, PROPANE FUTURES, AND THE FRAC SPREAD



### CME Future Prices

#### Ethane (C2)

##### Non-LDH— Mont Belvieu

Month	Close	Change
Feb-18	0.271	0.007
Mar-18	0.281	0.009
Apr-18	0.279	0.009
May-18	0.279	0.012
Jun-18	0.278	0.011
Jul-18	0.278	0.009
Aug-18	0.278	0.006
Sep-18	0.278	0.005
Oct-18	0.279	0.005
Nov-18	0.281	0.004
Dec-18	0.282	0.003
Jan-19	0.283	0.002

1YR Strip 0.279 0.007

### CME Future Prices

#### Propane (C3)

##### Non-LDH— Mont Belvieu

Month	Close	Change
Feb-18	0.913	0.009
Mar-18	0.893	0.013
Apr-18	0.853	0.008
May-18	0.813	0.005
Jun-18	0.798	0.005
Jul-18	0.793	0.005
Aug-18	0.793	0.005
Sep-18	0.794	0.004
Oct-18	0.798	0.004
Nov-18	0.802	0.004
Dec-18	0.805	0.004
Jan-19	0.809	0.004

1YR Strip 0.822 0.006

# NATURAL GAS NEWS



## Prompt WTI (CL) Crude

### Daily Sentiment

**BULLISH**



#### RESISTANCE

64.57 & 65.34

#### SUPPORT

63.23 & 62.66

### FOLLOW US ON TWITTER:



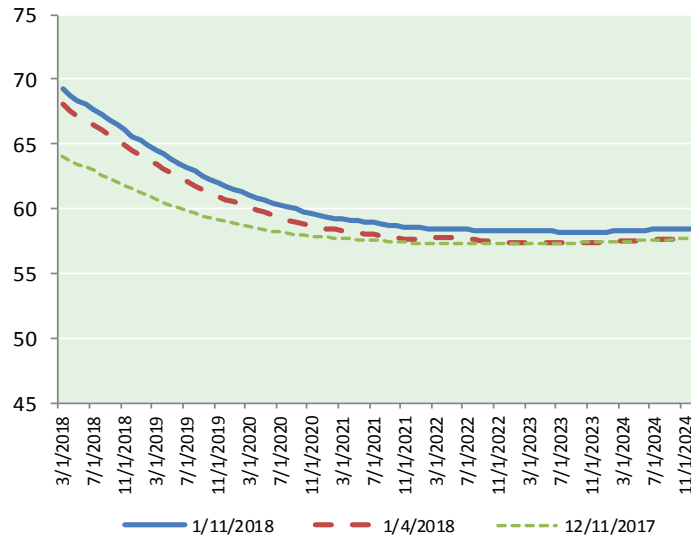
@MPG\_NatGasNews

## NYMEX Brent (BZ)

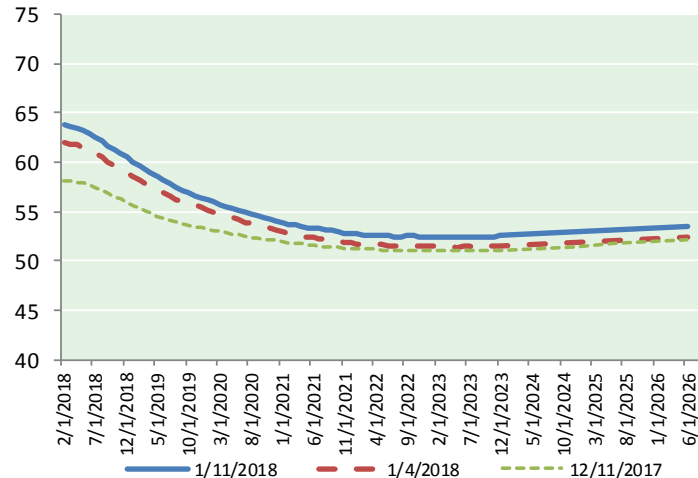
### Futures

Month	Close	Change
Mar-18	69.26	0.06
Apr-18	68.77	0.04
May-18	68.37	0.02
Jun-18	68.01	0.02
Jul-18	67.64	0.00
Aug-18	67.27	0.00
Sep-18	66.87	(0.01)
Oct-18	66.45	(0.02)
Nov-18	66.04	(0.03)
Dec-18	65.63	(0.02)
Jan-19	65.28	(0.03)
Feb-19	64.92	(0.04)
Mar-19	64.55	(0.04)
Apr-19	64.21	(0.04)
May-19	63.85	(0.04)
Jun-19	63.49	(0.04)
Jul-19	63.20	(0.04)
Aug-19	62.88	(0.04)
Sep-19	62.58	(0.05)
Oct-19	62.31	(0.05)
Nov-19	62.03	(0.05)
Dec-19	61.74	(0.05)
Jan-20	61.51	(0.06)
Feb-20	61.30	(0.06)
1YR Strip	67.04	(0.00)
2018	67.43	0.01
5YR Strip	61.29	(0.04)

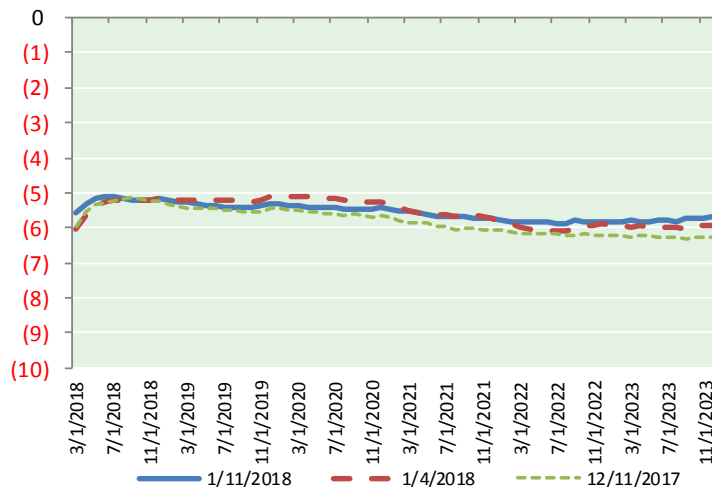
## BRENT CRUDE FORWARD CURVE



## WTI CRUDE FORWARD CURVE



## WTI-BRENT SPREAD



## FRAC Spread

### Specifications

Ethane :	42%	66,500 btu/g
Propane :	28%	90,830 btu/g
Butane :	11%	102,916 btu/g
Iso-Butane :	6%	98,935 btu/g
Natural Gasoline :	13%	115,021 btu/g

## Prompt NGL Futures

### (\$/gallon)

	Feb-18	Close	Change
Butane	0.986	0.009	
Iso-Butane	1.068	0.006	
Nat Gasoline	1.423	(0.002)	

## NYMEX WTI (CL) Futures

Month	Close	Change
Feb-18	63.80	0.23
Mar-18	63.68	0.26
Apr-18	63.46	0.25
May-18	63.20	0.22
Jun-18	62.89	0.21
Jul-18	62.52	0.20
Aug-18	62.09	0.18
Sep-18	61.67	0.16
Oct-18	61.25	0.15
Nov-18	60.85	0.15
Dec-18	60.48	0.15
Jan-19	60.09	0.15
Feb-19	59.68	0.15
Mar-19	59.26	0.12
Apr-19	58.88	0.14
May-19	58.48	0.11
Jun-19	58.13	0.10
Jul-19	57.77	0.10
Aug-19	57.44	0.09
Sep-19	57.15	0.09
Oct-19	56.89	0.09
Nov-19	56.65	0.09
Dec-19	56.44	0.09
Jan-20	56.18	0.09
1YR Strip	62.17	0.19
2018	62.35	0.20
5YR Strip	55.97	0.09