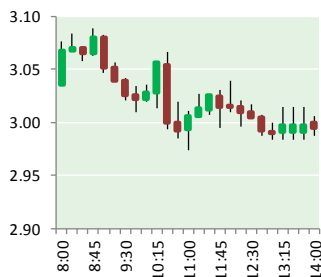


# NATURAL GAS



JANUARY 11, 2019

## Prior Day's NYMEX Feb-19 Contract (CT)



## NYMEX NG Futures

Month	Close	Change
Feb-19	2.969	(0.015)
Mar-19	2.813	(0.027)
Apr-19	2.706	0.000
May-19	2.698	0.002
Jun-19	2.748	0.003
Jul-19	2.799	0.003
Aug-19	2.802	0.003
Sep-19	2.780	0.003
Oct-19	2.808	0.004
Nov-19	2.860	0.005
Dec-19	3.015	0.005
Jan-20	3.124	0.003
Feb-20	3.070	0.007
Mar-20	2.884	0.009
Apr-20	2.618	0.021
May-20	2.564	0.026
Jun-20	2.586	0.022
Jul-20	2.612	
Aug-20	2.614	0.019
Sep-20	2.599	0.018
Oct-20	2.627	0.019
Nov-20	2.672	0.015
Dec-20	2.842	0.008
Jan-21	2.962	0.010
1YR Strip	2.844	(0.001)
2018	#DIV/O!	#DIV/O!
5YR Strip	2.717	0.008

## IN THE NEWS

Peru discusses importing natural gas through pipeline from Bolivia— Reuters reported: Energy ministers from Peru and Bolivia agreed on Thursday to discuss building a pipeline that would transport natural gas and liquefied natural gas (LNG) from Bolivia to its neighbor. The pipeline would provide crucial access to the Pacific Ocean for land-locked Bolivia, running to Peru's southern

- Peru discusses importing natural gas through pipeline from Bolivia
- Poland Scrambles To Wean Itself Off Russian Gas

port of Ilo. Bolivia had wanted to build a pipeline through Chile to reach the ocean and expand its gas exports, but the International Court of Justice ruled against Bolivia's demand that Chile negotiate granting it sovereign access to the sea in October. Bolivia is South America's top natural gas exporter, but it is a net importer of oil, as is neighboring Peru. For more on this story visit reuters.com or click <https://reut.rs/2D49jd0>

Poland Scrambles To Wean Itself Off Russian Gas— Oil Price reports: Poland is continuing to make a pivot away from its decades-long natural gas supplier - Russia. In a statement on Wednesday, Polish state-controlled oil and gas company PGNIG said that its share of gas imports from Russia fell to 66.8 percent in 2018 from 70.4 percent the previous year, while it imported around 9.04 bcm for the end of 2018, a drop of 6.4 percent year-on-year. The company imported around 13.53 bcm worth of gas to Poland, while domestic production totaled some 3.8 bcm. Poland's liquefied natural gas (LNG) imports also increased in 2018 from the previous year, the company said. LNG imports from Qatar, Norway and the U.S. in 2018 increased by nearly 1 bcm (58.2 percent) and reached over 2.71 bcm (after regasification), compared to 2017, when around 1.72 bcm of LNG was imported after regasification. Poland's LNG imports last year represented 20 percent of the country's total gas imports compared to just 8.4 percent in 2016. For more on this story visit oilprice.com or click <https://bit.ly/2D40dwT>

## Prompt Natural Gas (NG) Daily Sentiment

**BEARISH**



RESISTANCE

3.05 & 3.13

SUPPORT

2.92 & 2.88

## Trading Summary

### NATURAL GAS

Futures	Close	Change
NG	2.969	(0.015)
Volume	443,043	14,891
Open Int.	1,301,340	14,839

### CRUDE AND GASOLINE

Futures	Close	Change
Crude	52.59	0.23
RBOB	1.4307	0.0053
Crude/NG	17.71	0.17

### METALS

Futures	Close	Change
Gold	1,284.70	6.40

### EQUITIES

Exchange	Close	Change
DOW	24,001.92	122.80
S&P 500	-69.16	11.68

### CURRENCY

Currency	Close	Change
EUR/USD	1.1490	(0.0010)
USD/CND	1.2405	0.0018

## 12 MONTH CANDLESTICK (WEEKLY)



## Contact Us



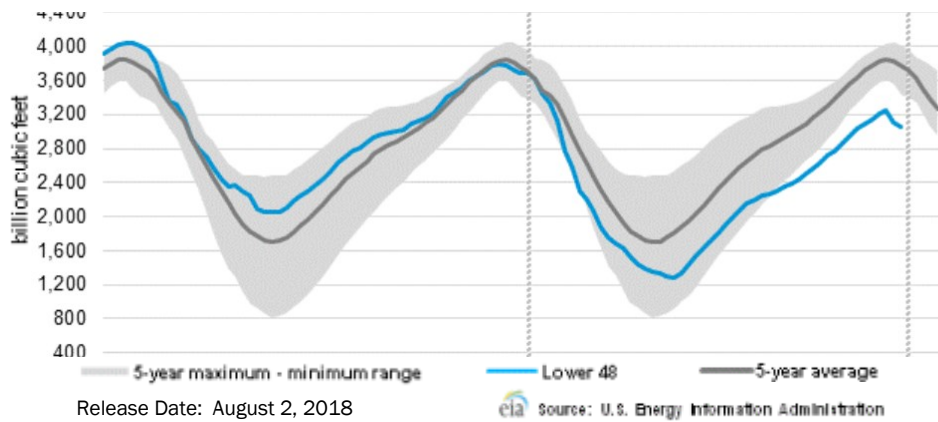
**Mansfield Energy Corp**  
1025 Airport Pkwy  
Gainesville, GA 30501  
  
www.mansfield.energy  
info@mansfieldoil.com

Phone: (800) 695-6626



# NATURAL GAS NEWS

## WEEKLY GAS IN UNDERGROUND STORAGE WITH 5-YR RANGE



## Rig Count

Report Date: January 4, 2019

	Total	Change
US -	1,075	(8)
CN -	76	6

## EIA Weekly NG Storage Actual and Surveys for January 11, 2019

Released January 10, 2019

Range – +112 to +61

PIRA – (77)

PointLogic – (77)

Citi Futures – (50)

EIA ACTUAL – (91)

## Total Working Gas In Storage

**2,614 BCF**

(91) BCF (LAST WEEK)

(204) BCF (LAST YEAR)

(464) BCF (5-YR AVG)

## U.S. Natural Gas Supply Gas Week 1/3 – 1/9

Average daily values (BCF/D):

Last Year (BCF/d)

Dry Production – +74.8

Total Supply – +82.5

Last Week (BCF/d)

Dry Production – +87.6

Total Supply – +92.7

[NEXT REPORT ON Jan 18]

## U.S. Natural Gas Demand Gas Week 1/3 – 1/9

Average daily values (BCF/D):

Last Year (BCF/d)

Power – +26.3

Total Demand – +104.3

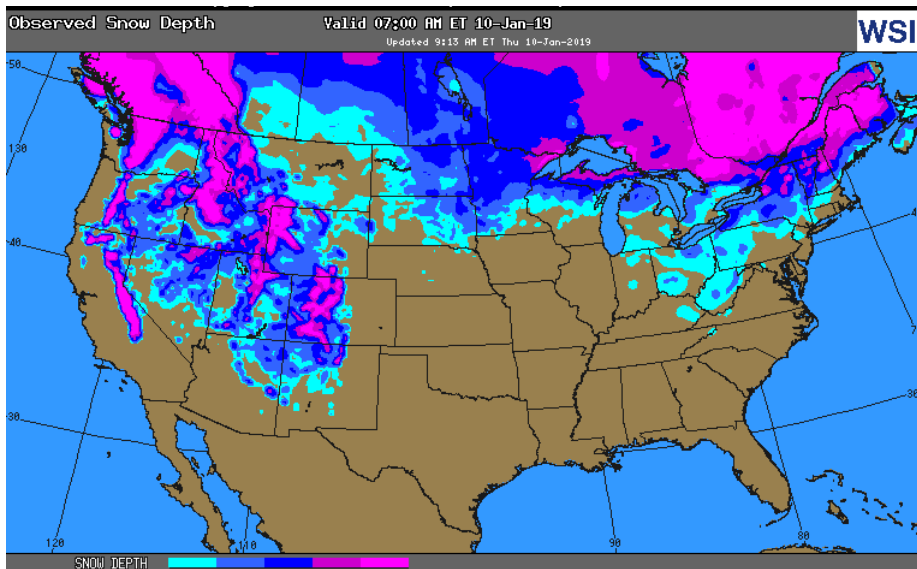
Last Week (BCF/d)

Power – +26.3

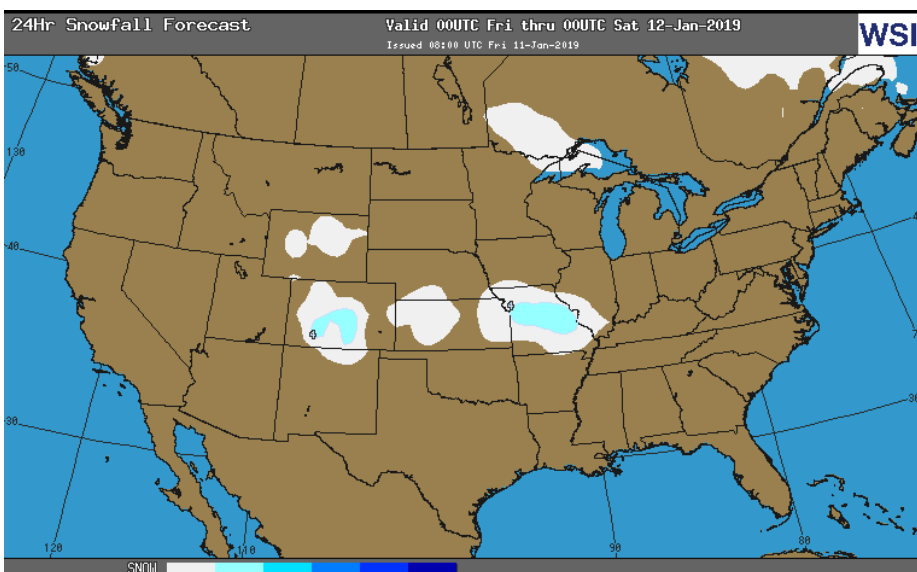
Total Demand – +99.4

[NEXT REPORT ON Jan 18]

## OBSERVED SNOW DEPTH

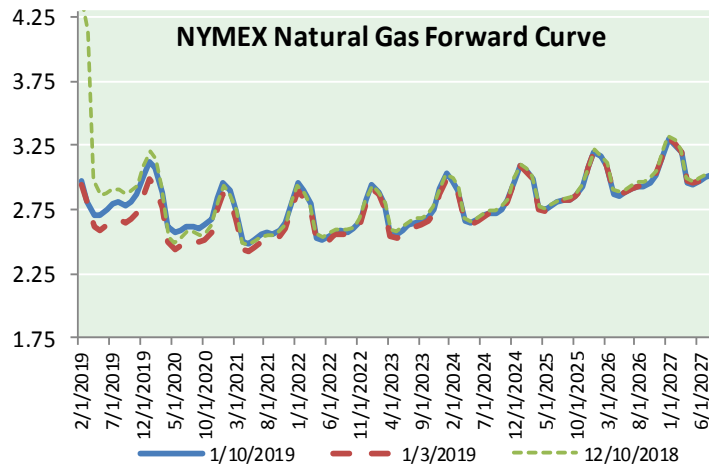
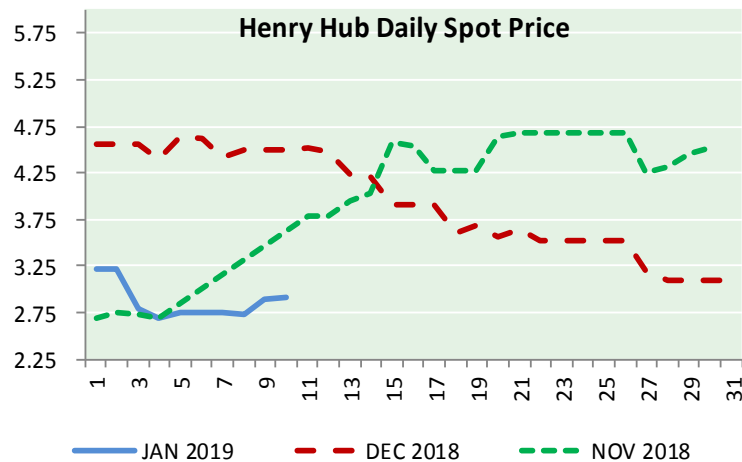
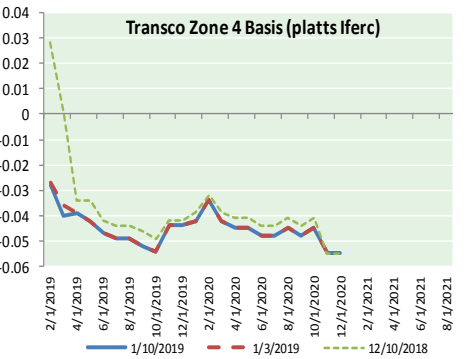
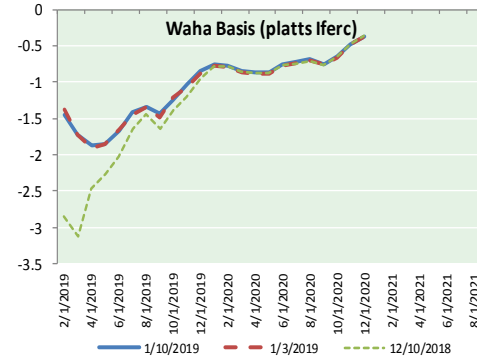
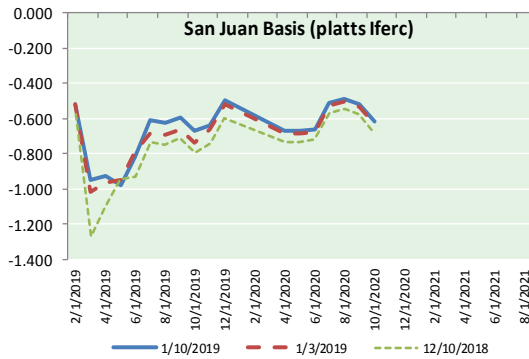
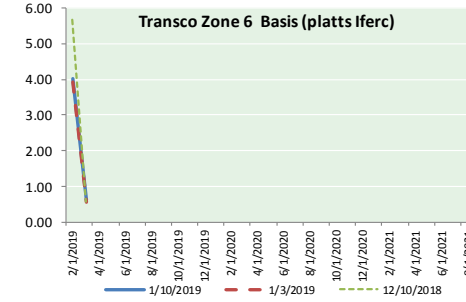
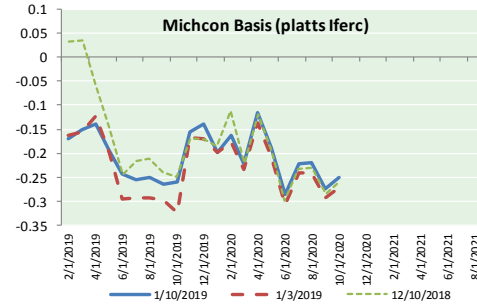
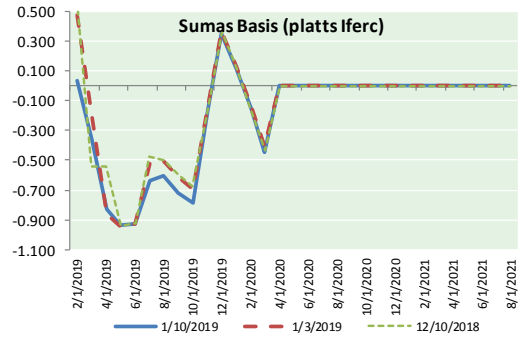


## 24 HOUR SNOWFALL FORECAST





NATURAL GAS BASIS FUTURES, HENRY HUB SPOT PRICES, AND FORWARD CURVE



NYMEX WTI Delivery  
Month Average (\$/bbl)  
(Excluding Weekends and Holidays)

Month: January 2019

Day	Price	Day	Price
1		16	
2	46.54	17	
3	47.09	18	
4	47.96	19	
5		20	
6		21	
7	48.52	22	
8	49.78	23	
9	52.36	24	
10	52.59	25	
11		26	
12		27	
13		28	
14		29	
15		30	
		31	

Average (Jan) 49.2629  
(through 01/10/2019)

Average (Dec) 49.5400

Average (Nov) 56.6933

CME NG Option Prices

ATM Call

Month	Strike	Close	Imp Vol
Mar-19			
Apr-19	2.850	0.149	33.7
May-19			
Jun-19			
Jul-19			

CME NG Option Prices

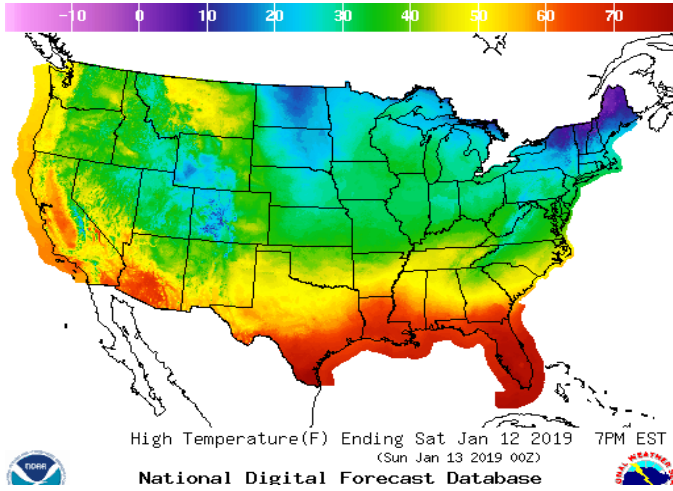
ATM Put

Month	Strike	Close	Imp Vol
Mar-19			
Apr-19	2.850	0.185	48.7
May-19			
Jun-19			
Jul-19			

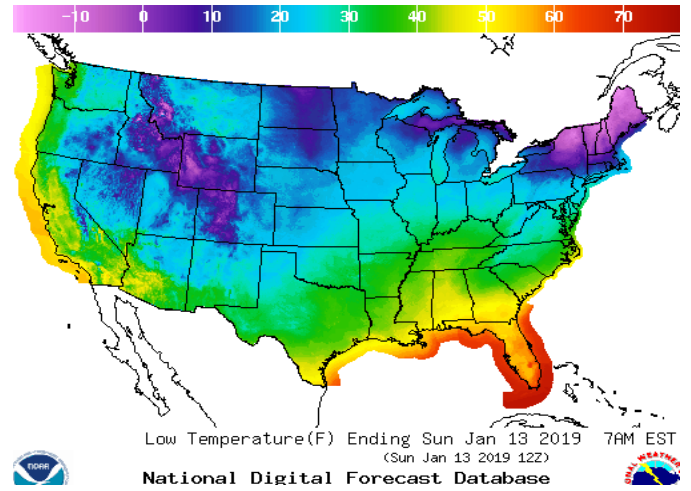


WEATHER – HIGH / LOW TEMPERATURE SATURDAY

HIGH Temperature

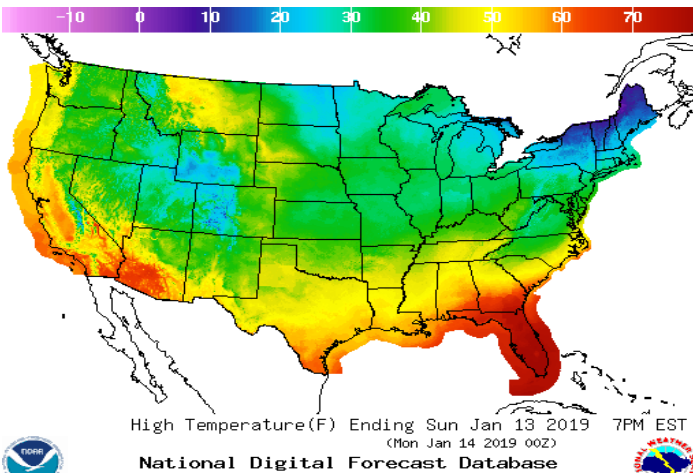


LOW Temperature

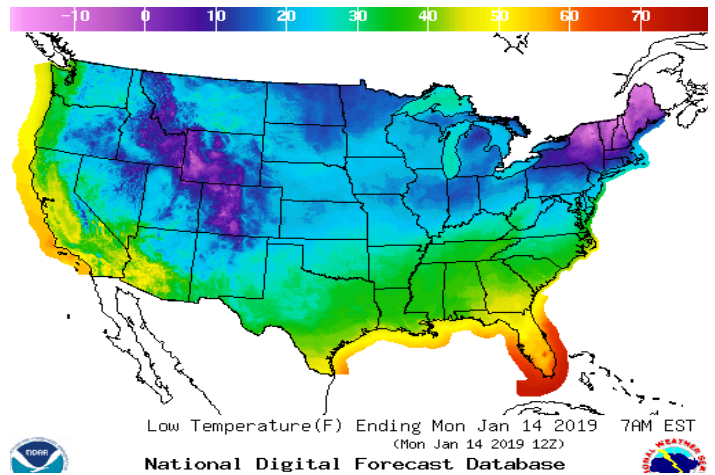


WEATHER – HIGH / LOW TEMPERATURE SUNDAY

Temperature

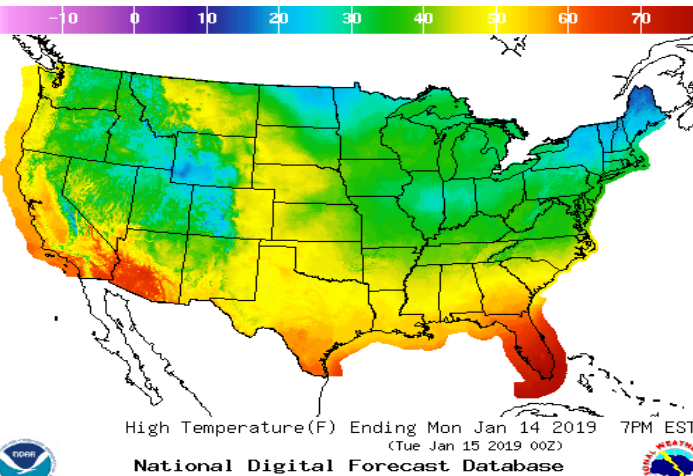


Precipitation

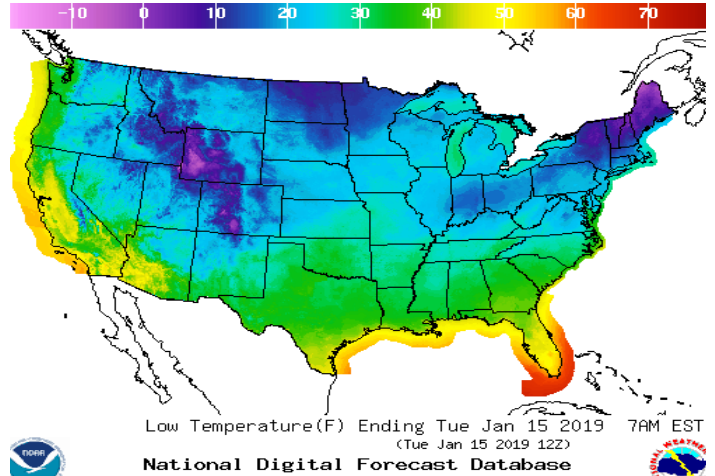


WEATHER – HIGH / LOW TEMPERATURE MONDAY

Temperature

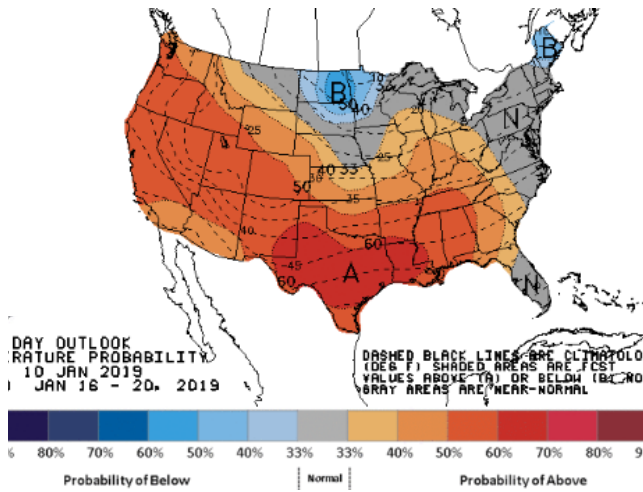


Precipitation

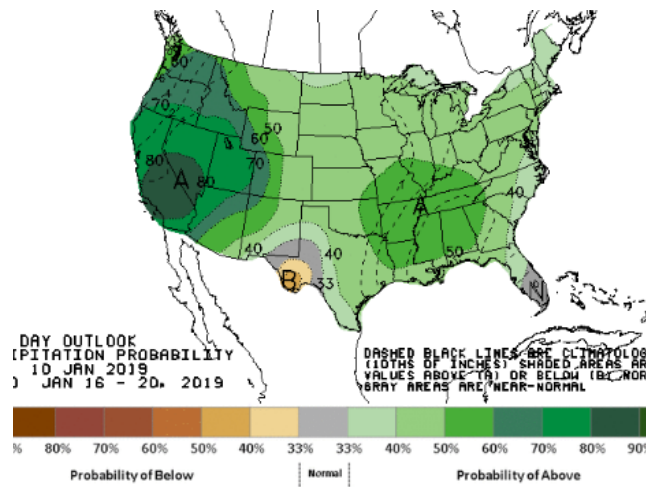


WEATHER – 6 TO 10 DAY OUTLOOK – NOAA

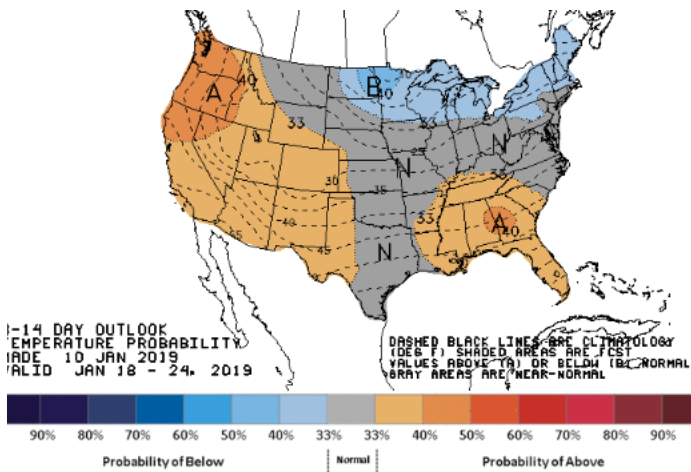
HIGH Temperature



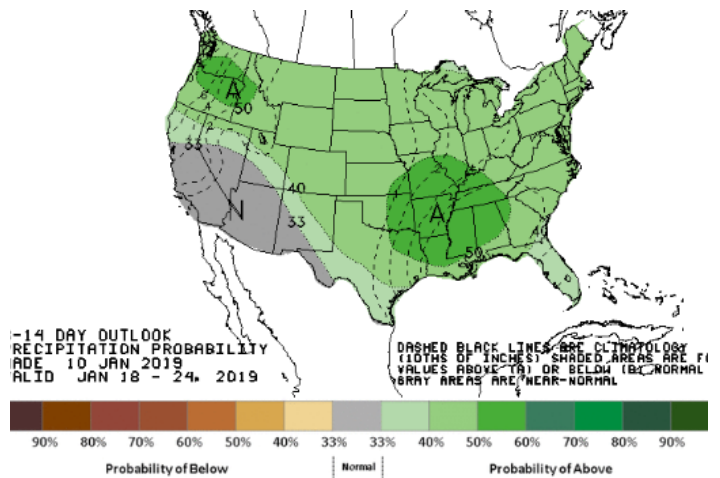
LOW Temperature



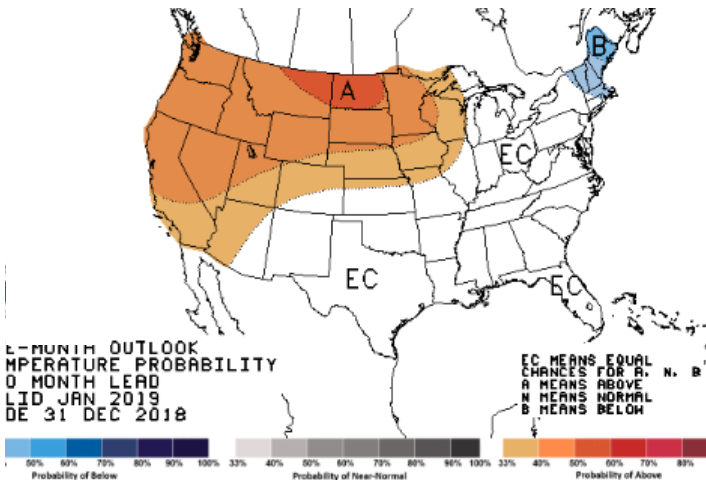
WEATHER – 8 TO 14 DAY OUTLOOK – NOAA  
Temperature



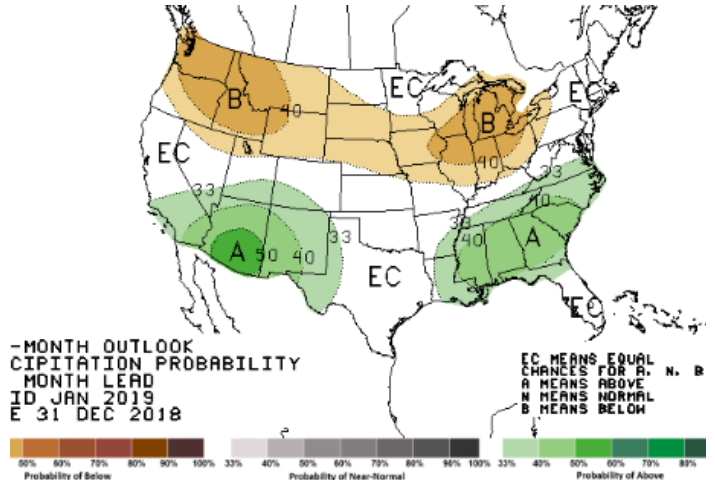
Precipitation



WEATHER – 30 DAY OUTLOOK – NOAA  
Temperature



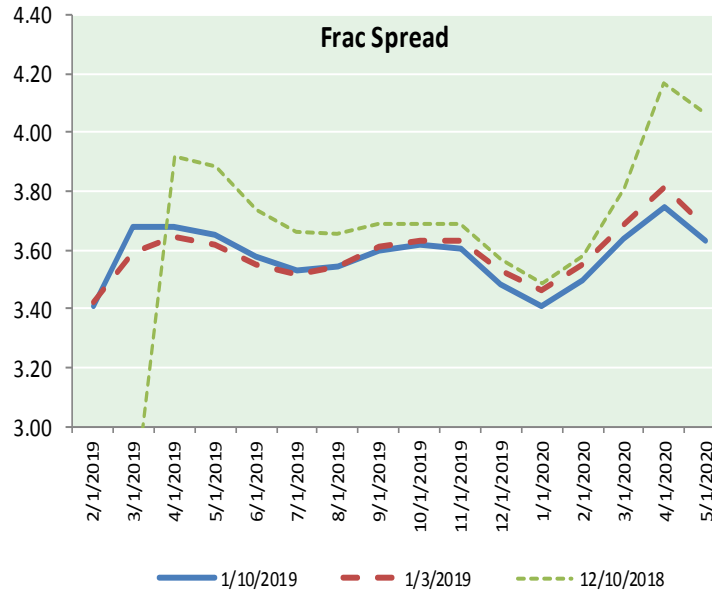
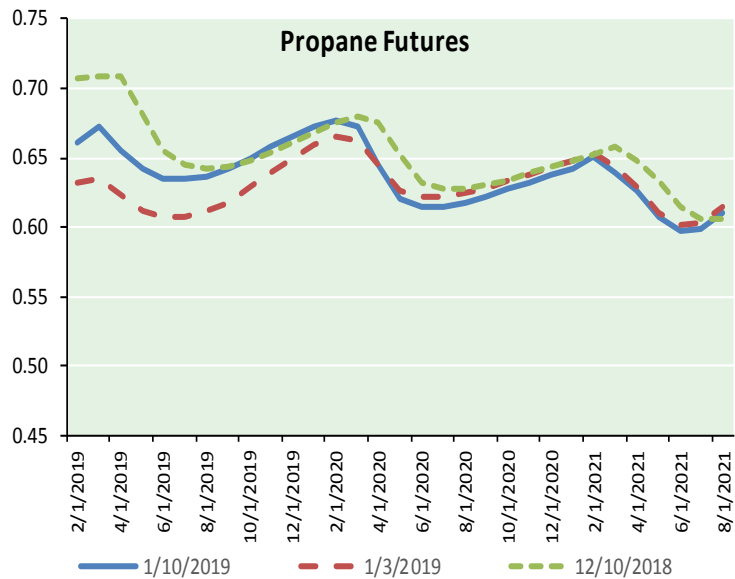
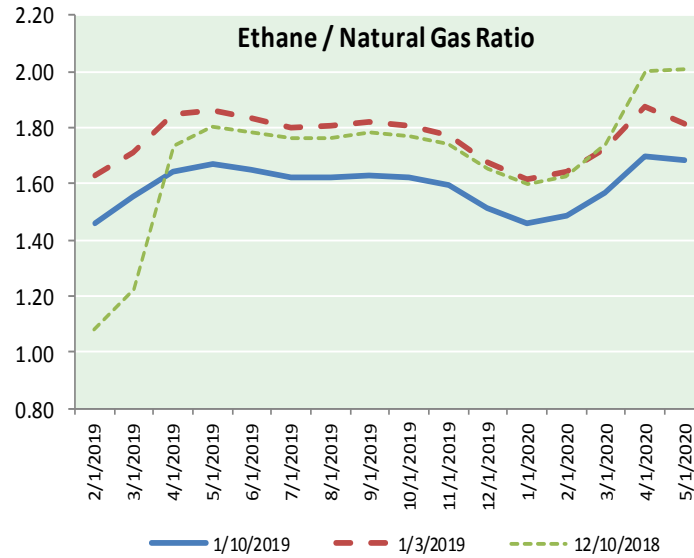
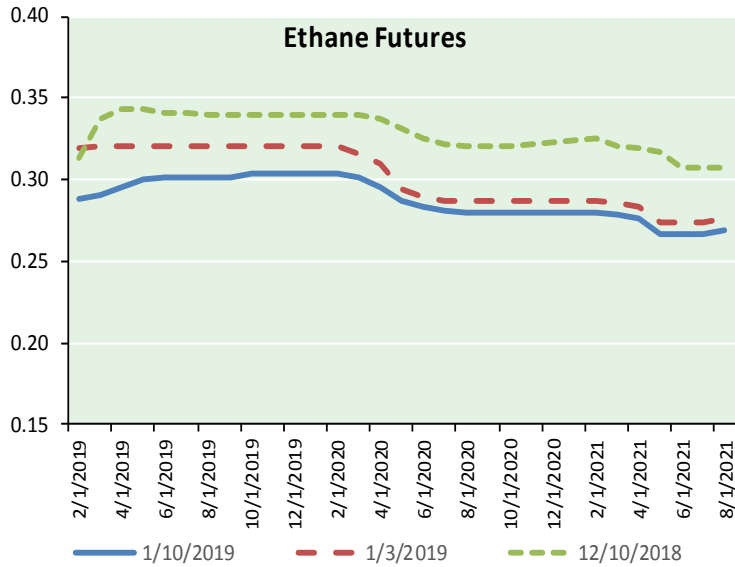
Precipitation



**NATURAL GAS NEWS**



**ETHANE FUTURES, NG/ETHANE RATIO, PROPANE FUTURES, AND THE FRAC SPREAD**



**CME Future Prices**

Month	Close	Change
Feb-19	0.288	(0.004)
Mar-19	0.291	(0.006)
Apr-19	0.296	(0.004)
May-19	0.300	(0.003)
Jun-19	0.301	(0.003)
Jul-19	0.302	(0.003)
Aug-19	0.302	(0.003)
Sep-19	0.302	(0.003)
Oct-19	0.303	(0.004)
Nov-19	0.303	(0.004)
Dec-19	0.303	(0.004)
Jan-20	0.303	(0.004)
1YR Strip	0.299	(0.004)

**CME Future Prices**

**Propane (C3)  
Non-LDH— Mont Belvieu**

Month	Close	Change
Feb-19	0.661	0.006
Mar-19	0.673	0.009
Apr-19	0.655	0.006
May-19	0.642	0.006
Jun-19	0.636	0.005
Jul-19	0.634	0.004
Aug-19	0.637	0.004
Sep-19	0.643	0.005
Oct-19	0.650	0.004
Nov-19	0.658	0.003
Dec-19	0.665	0.003
Jan-20	0.672	0.002
1YR Strip	0.652	0.005

# NATURAL GAS NEWS



## Prompt WTI (CL) Crude Daily Sentiment

**BEARISH**



RESISTANCE

53.12 & 53.66

SUPPORT

51.71 & 50.84

FOLLOW US ON TWITTER:



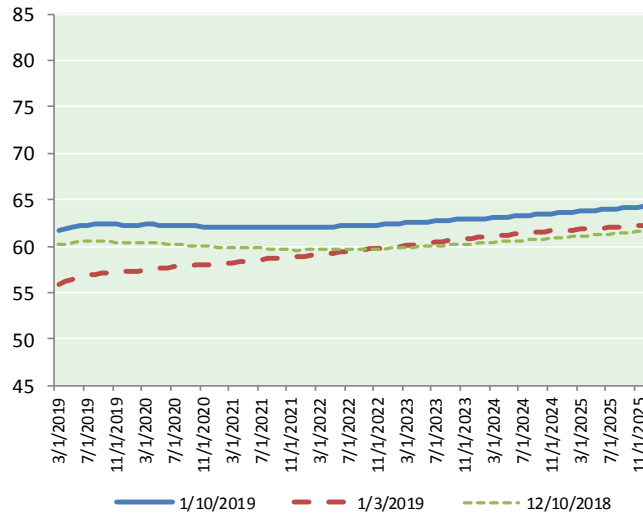
@MPG\_NatGasNews

## NYMEX Brent (BZ)

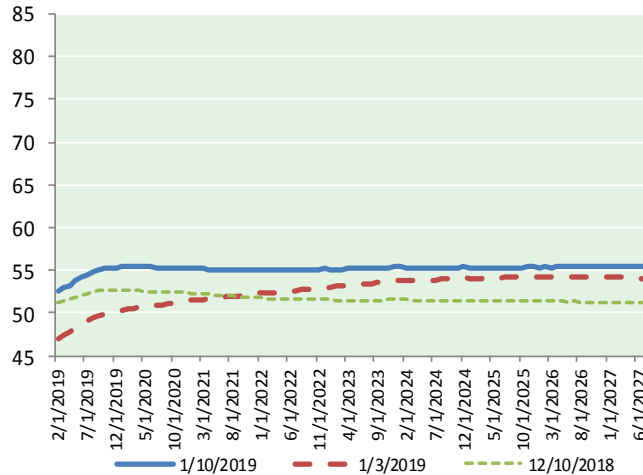
### Futures

Month	Close	Change
Feb-19	52.59	0.23
Mar-19	52.91	0.22
Apr-19	53.28	0.21
May-19	53.73	0.22
Jun-19	54.16	0.22
Jul-19	54.53	0.23
Aug-19	54.81	0.23
Sep-19	55.02	0.22
Oct-19	55.18	0.21
Nov-19	55.29	0.22
Dec-19	55.35	0.20
Jan-20	55.37	0.18
Feb-20	55.38	0.16
Mar-20	55.38	0.14
Apr-20	55.39	0.12
May-20	55.39	0.10
Jun-20	55.38	0.08
Jul-20	55.32	0.05
Aug-20	55.28	0.03
Sep-20	55.26	0.02
Oct-20	55.24	0.00
Nov-20	55.23	(0.01)
Dec-20	55.24	(0.04)
Jan-21	55.19	(0.08)
1YR Strip	54.35	0.22
2018	#DIV/0!	#DIV/0!
5YR Strip	55.06	(0.11)

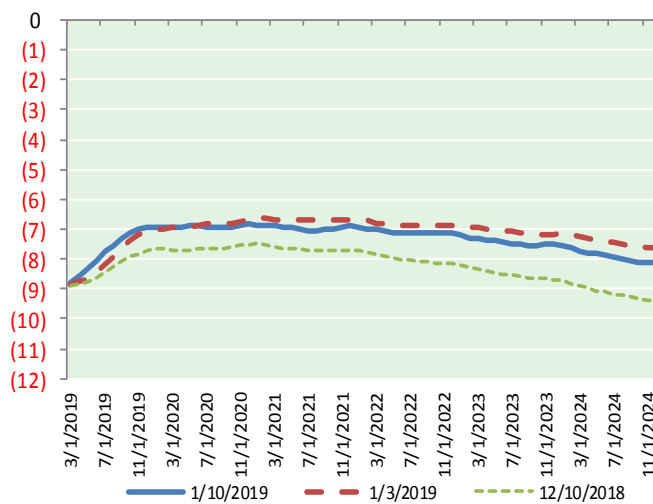
## BRENT CRUDE FORWARD CURVE



## WTI CRUDE FORWARD CURVE



## WTI-BRENT SPREAD



## FRAC Spread

### Specifications

Ethane :	42%	66,500 btu/g
Propane:	28%	90,830 btu/g
Butane:	11%	102,916 btu/g
Iso-Butane:	6%	98,935 btu/g
Natural Gasoline:	13%	115,021 btu/g

## Prompt NGL Futures

	Feb-19	Close	Change
Butane	0.787	0.002	
Iso-Butane	0.797	0.001	
Nat Gasoline	1.061	0.007	

## NYMEX WTI (CL) Futures

Month	Close	Change
Mar-19	61.68	0.24
Apr-19	61.81	0.21
May-19	62.02	0.19
Jun-19	62.20	0.17
Jul-19	62.29	0.15
Aug-19	62.35	0.15
Sep-19	62.33	0.15
Oct-19	62.32	0.15
Nov-19	62.32	0.14
Dec-19	62.29	0.14
Jan-20	62.29	0.14
Feb-20	62.29	0.14
Mar-20	62.30	0.13
Apr-20	62.30	0.10
May-20	62.29	0.08
Jun-20	62.27	0.07
Jul-20	62.24	0.05
Aug-20	62.21	0.05
Sep-20	62.19	0.04
Oct-20	62.15	0.03
Nov-20	62.11	0.02
Dec-20	62.07	0.00
Jan-21	62.05	0.00
Feb-21	62.05	(0.01)
1YR Strip	62.18	0.16
2018	#DIV/0!	#DIV/0!
5YR Strip	62.29	(0.08)