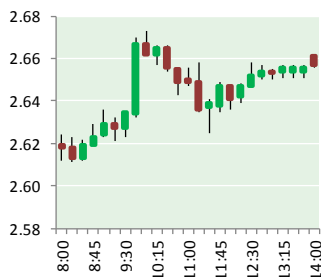


# NATURAL GAS



FEBRUARY 20, 2019

## Prior Day's NYMEX Mar-19 Contract (CT)



## NYMEX NG Futures

Month	Close	Change
Mar-19	2.662	0.037
Apr-19	2.697	0.041
May-19	2.721	0.039
Jun-19	2.770	0.041
Jul-19	2.822	0.042
Aug-19	2.838	0.039
Sep-19	2.827	0.037
Oct-19	2.843	0.033
Nov-19	2.890	0.031
Dec-19	3.026	0.028
Jan-20	3.111	0.028
Feb-20	3.051	0.035
Mar-20	2.936	0.036
Apr-20	2.625	0.031
May-20	2.589	0.032
Jun-20	2.618	0.033
Jul-20	2.648	0.032
Aug-20	2.649	0.031
Sep-20	2.630	0.031
Oct-20	2.650	0.029
Nov-20	2.696	0.029
Dec-20	2.847	0.026
Jan-21	2.962	0.020
Feb-21	2.901	0.017
1YR Strip	2.855	0.036
2019	2.810	0.037
5YR Strip	2.726	0.018

## IN THE NEWS

Cheaper Natural Gas Is Coming To Europe— Oil Price reported: The European Union recently updated its gas pipeline rules in a bid to assuage concerns about its deepening dependence on Russian gas. The move was generally praised by Nord Stream 2 opponents, but guardedly, since the update did not halt the project but will merely slow it. However controversial, the project

- **Cheaper Natural Gas Is Coming To Europe**
- **TransCanada Applies For West-East Gas Shipment Clearance**

will be among the factors that will benefit gas consumers in Europe amid stiffer competition from other exporters of natural gas. Germany, the largest gas market in Europe and biggest buyer of Russian gas as well as the strongest supporter of Nord Stream, said it will build two LNG terminals as part of efforts to diversify its sources of the fuel as it phases out coal and nuclear power plants under pressure from the green lobby. For more on this story visit [oilprice.com](http://oilprice.com) or click <https://bit.ly/2T71SL4>

TransCanada Applies For West-East Gas Shipment Clearance— Oil Price reported: TransCanada has applied with the National Energy Board of Canada for permission to start transporting natural gas from the west of the country to New Brunswick in the east, using existing pipeline infrastructure, CBC reports, adding the company has won the support of Enbridge and Irving Oil, the two largest gas retailers in New Brunswick. According to the general manager of Enbridge, Gilles Volpe, the move could cut consumers' gas bills by as much as 30-40 percent. The plan, Volpes said, " gives access to more capacity, and more access to the Alberta-based natural gas. That natural gas is plentiful, of course, but it's also very stable from a price point of view." Enbridge has already signed a contract for the deliveries of natural gas from Alberta to the East for 20.5 years beginning in 2021. Irving Oil has also signed a contract, with deliveries beginning this November. "EGNB [Enbridge Gas New Brunswick] does not have access to local supply, nor local natural gas storage facilities to meet its franchise needs at this time and considers [gas from the west] as a valuable asset in meeting the needs of Atlantic Canada long term," said Volpe. For more on this story visit [oilprice.com](http://oilprice.com) or click <https://bit.ly/2T6OXIS>

## 12 MONTH CANDLESTICK (WEEKLY)



## Prompt Natural Gas (NG) Daily Sentiment

**BEARISH**



RESISTANCE

2.69 & 2.72

SUPPORT

2.62 & 2.57

## Trading Summary

### NATURAL GAS

Futures	Close	Change
NG	2.662	0.037
Volume	408,746	(346,580)
Open Int.	1,214,115	(17,992)

### CRUDE AND GASOLINE

Futures	Close	Change
Crude	56.09	0.50
RBOB	1.5638	(0.0091)
Crude/NG	21.07	(0.11)

### METALS

Futures	Close	Change
Gold	1,340.10	1.80

### EQUITIES

Exchange	Close	Change
DOW	25,879.14	(12.18)
S&P 500	-1,946.38	(2.08)

### CURRENCY

Currency	Close	Change
EUR/USD	1.1334	(0.0007)
USD/CND	1.2405	(0.0028)

## Contact Us



**Mansfield Energy Corp**  
1025 Airport Pkwy  
Gainesville, GA 30501

[www.mansfield.energy](http://www.mansfield.energy)

[info@mansfieldoil.com](mailto:info@mansfieldoil.com)

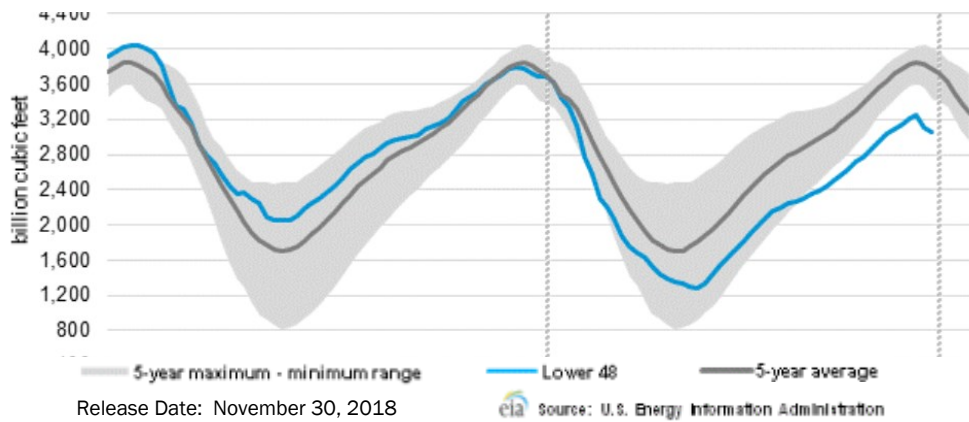
Phone: (800) 695-6626





# NATURAL GAS NEWS

## WEEKLY GAS IN UNDERGROUND STORAGE WITH 5-YR RANGE



## Rig Count

Report Date: February 15, 2019

	Total	Change
US -	1,051	+2
CN -	224	(16)

## EIA Weekly NG Storage

### Actual and Surveys for

### February 15, 2019

Released February 14, 2019

Range – +175 to +128

PIRA – (80)

PointLogic – (84)

Citi Futures – (81)

EIA ACTUAL – (237)

## Total Working Gas In Storage

# 1,882 BCF

(78) BCF (LAST WEEK)

(30) BCF (LAST YEAR)

(333) BCF (5-YR AVG)

## U.S. Natural Gas Supply

### Gas Week 2/07 – 2/13

#### Average daily values (BCF/D):

Last Year (BCF/d)

Dry Production – +78.4

Total Supply – +84.3

Last Week (BCF/d)

Dry Production – +87.4

Total Supply – +92.5

[NEXT REPORT ON Feb 22]

## U.S. Natural Gas Demand

### Gas Week 2/07 – 2/13

#### Average daily values (BCF/D):

Last Year (BCF/d)

Power – +23.9

Total Demand – +105.2

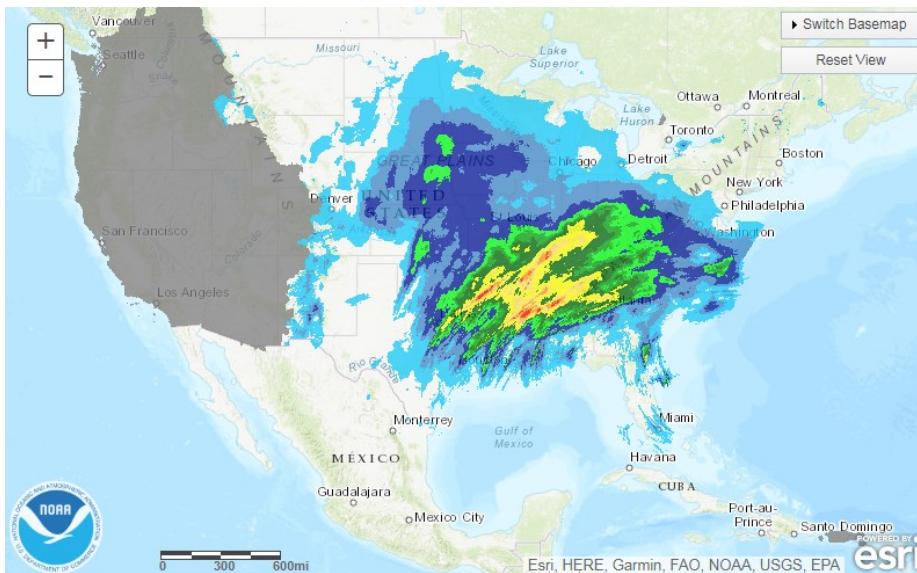
Last Week (BCF/d)

Power – +23.6

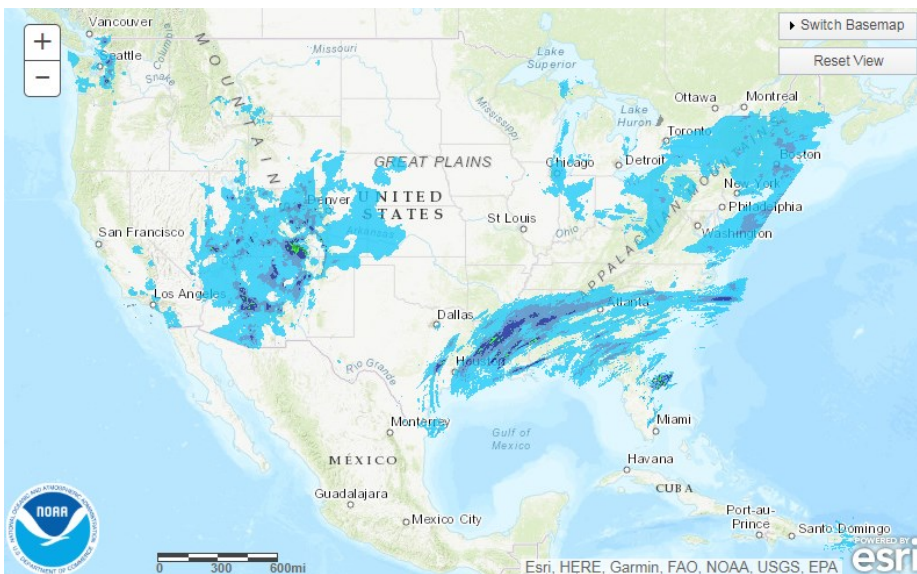
Total Demand – +103.8

[NEXT REPORT ON Feb 22]

## TODAY'S PRECIPITATION



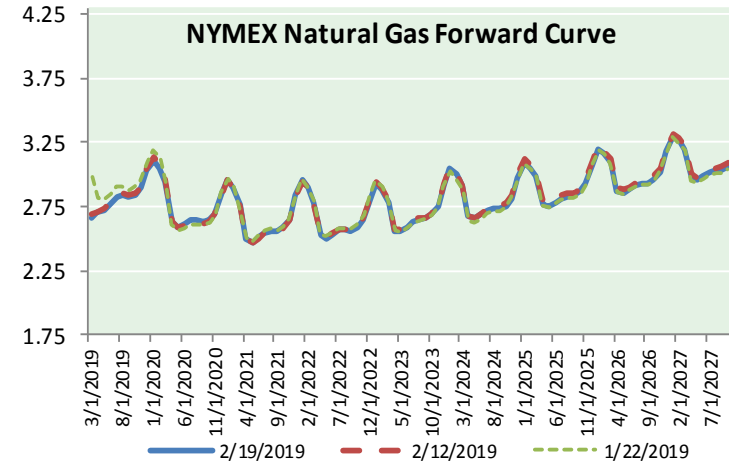
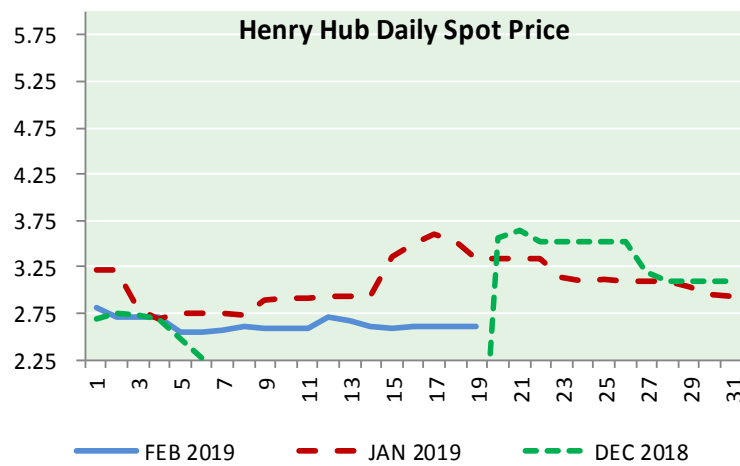
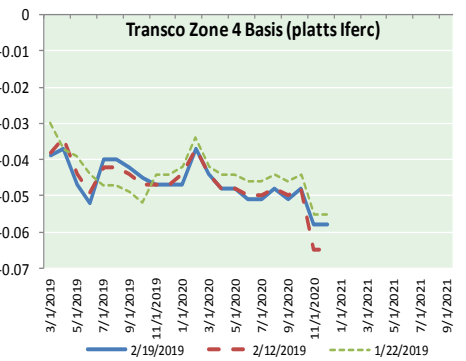
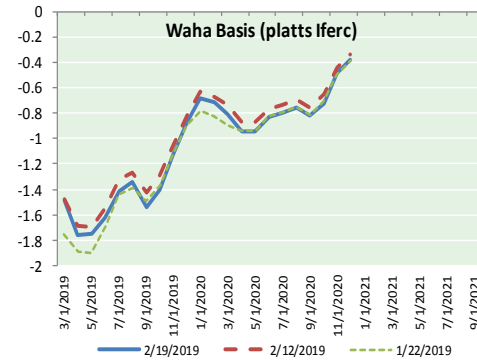
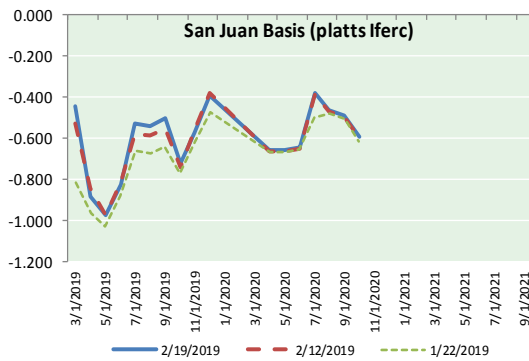
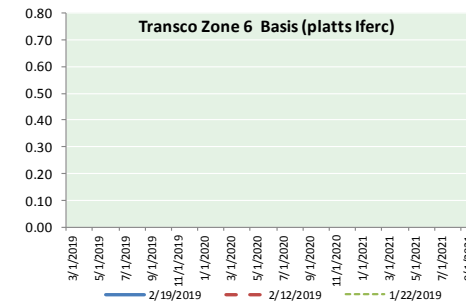
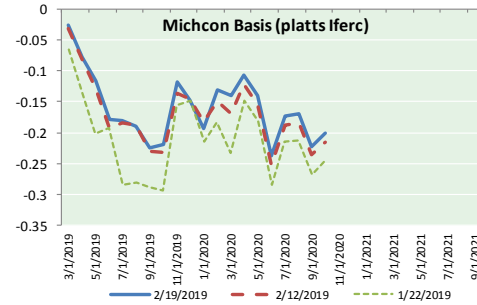
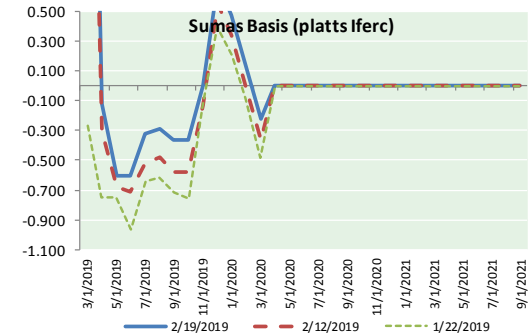
## 24 HOUR PRECIPITATION



NATURAL GAS NEWS



NATURAL GAS BASIS FUTURES, HENRY HUB SPOT PRICES, AND FORWARD CURVE



**NYMEX WTI Delivery**  
**Month Average (\$/bbl)**  
(Excluding Weekends and Holidays)

Month: February 2019

Day	Price	Day	Price
1	55.26	16	
2		17	
3		18	56.09
4	54.56	19	56.09
5	53.66	20	
6	54.01	21	
7	52.64	22	
8	52.72	23	
9		24	
10		25	
11	52.41	26	
12	53.10	27	
13	53.90	28	
14	54.41		
15	55.59		

Average (Feb) 54.1877  
(through 02/19/2019)  
Average (Jan) 51.5505  
Average (Dec) 49.5400

**CME NG Option Prices**

**ATM Call**

Month	Strike	Close	Imp Vol
Apr-19			
May-19	2.700	0.079	22.5
Jun-19			
Jul-19			
Aug-19			

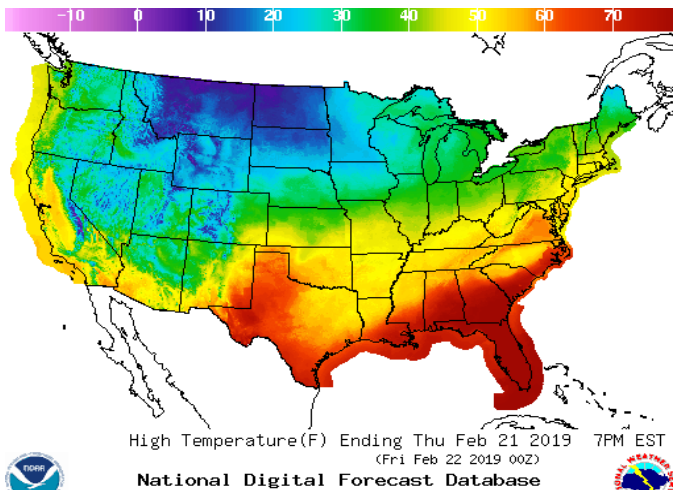
**CME NG Option Prices**

**ATM Put**

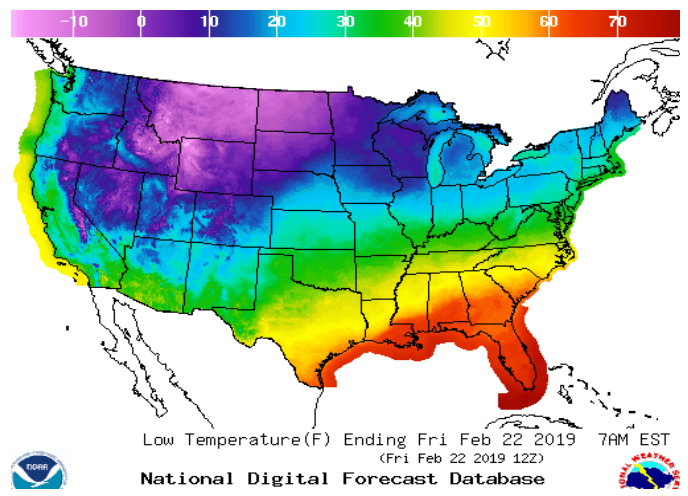
Month	Strike	Close	Imp Vol
Apr-19			
May-19	2.700	0.076	24.3
Jun-19			
Jul-19			
Aug-19			

WEATHER – HIGH / LOW TEMPERATURE TOMORROW

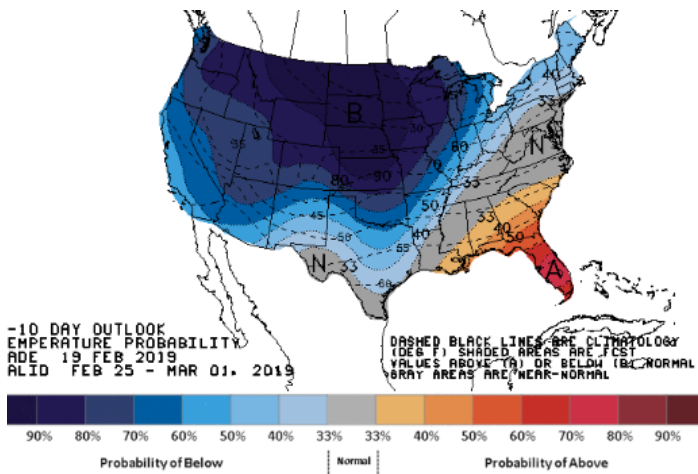
HIGH Temperature



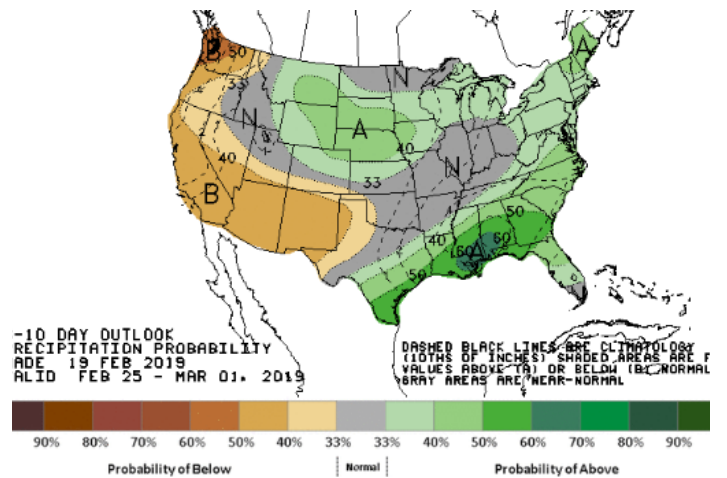
LOW Temperature



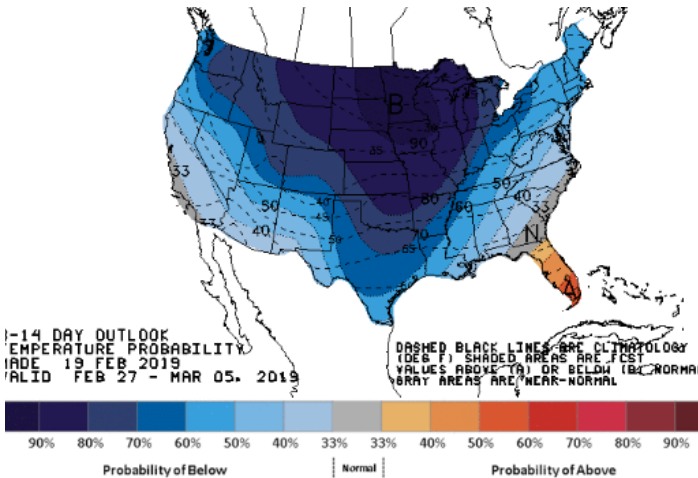
WEATHER – 6 TO 10 DAY OUTLOOK – NOAA  
Temperature



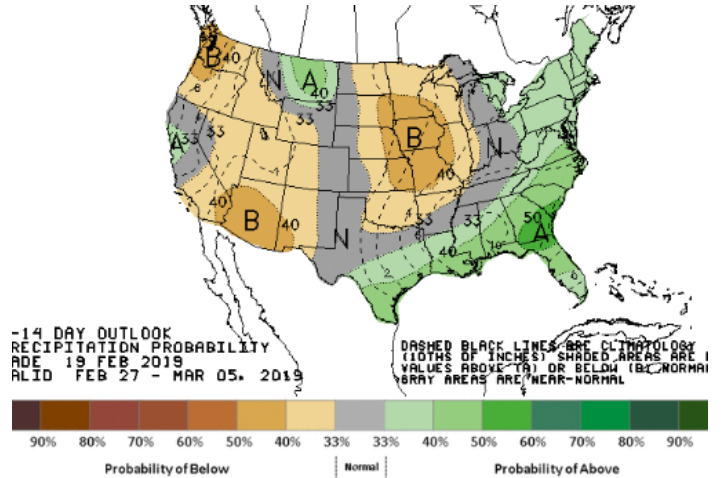
Precipitation



WEATHER – 8 TO 14 DAY OUTLOOK – NOAA  
Temperature



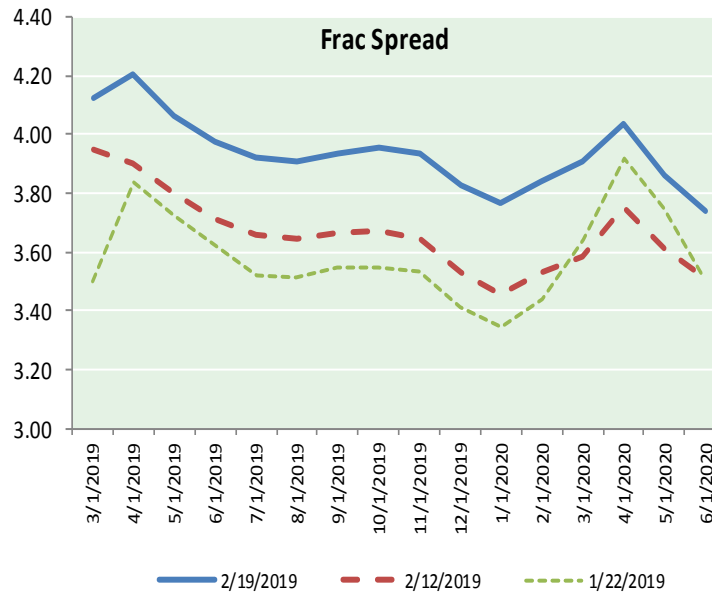
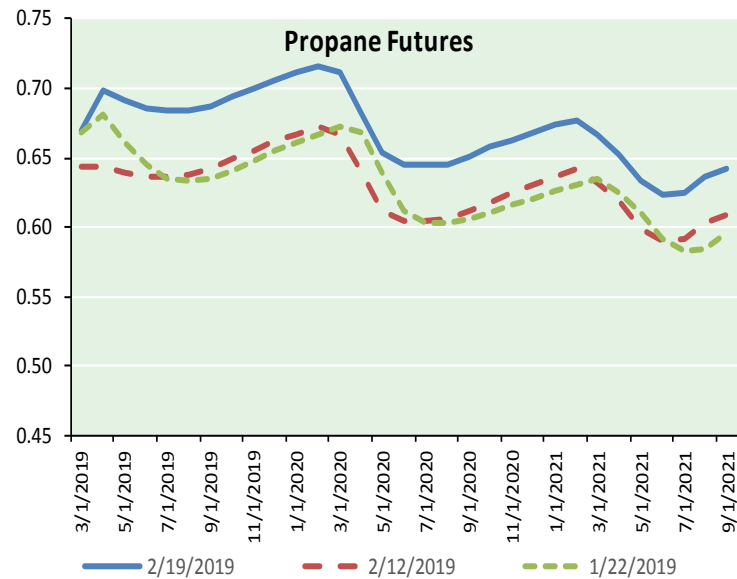
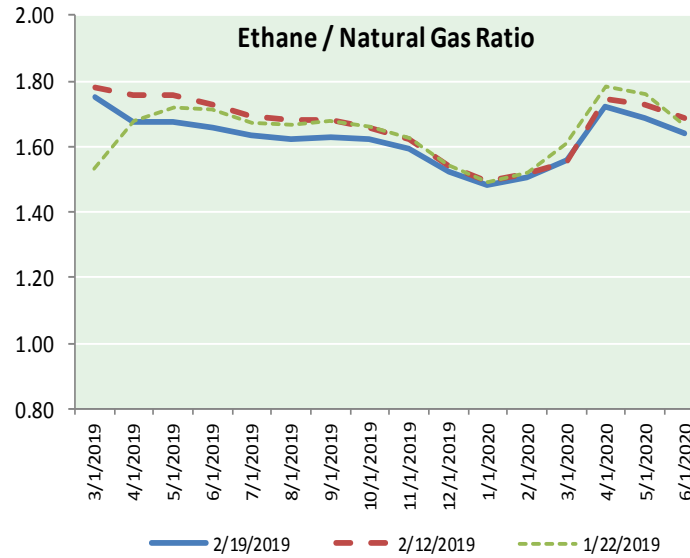
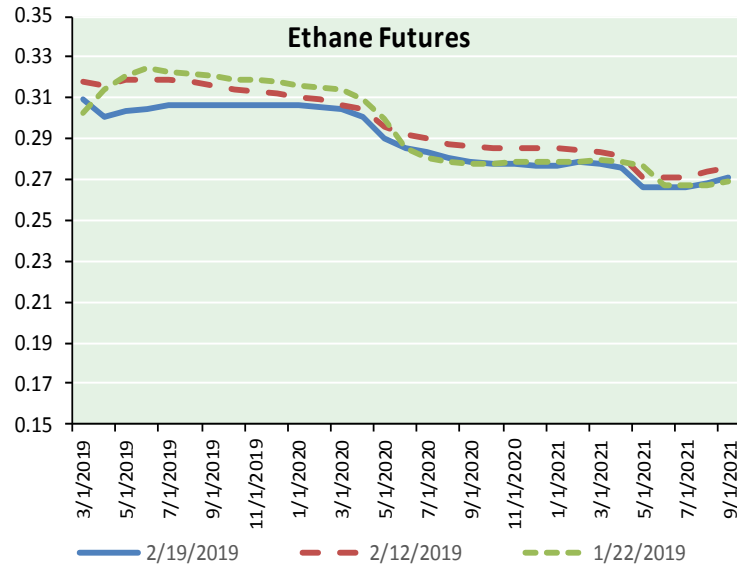
Precipitation



**NATURAL GAS NEWS**



**ETHANE FUTURES, NG/ETHANE RATIO, PROPANE FUTURES, AND THE FRAC SPREAD**



**CME Future Prices**

Month	Close	Change
Mar-19	0.310	#N/A
Apr-19	0.301	#N/A
May-19	0.303	#N/A
Jun-19	0.305	#N/A
Jul-19	0.306	#N/A
Aug-19	0.307	#N/A
Sep-19	0.307	#N/A
Oct-19	0.307	#N/A
Nov-19	0.307	#N/A
Dec-19	0.307	#N/A
Jan-20	0.307	#N/A
Feb-20	0.306	#N/A
1YR Strip	0.306	#N/A

**CME Future Prices**

**Propane (C3)  
Non-LDH— Mont Belvieu**

Month	Close	Change
Mar-19	0.670	#N/A
Apr-19	0.699	#N/A
May-19	0.691	#N/A
Jun-19	0.686	#N/A
Jul-19	0.684	#N/A
Aug-19	0.684	#N/A
Sep-19	0.688	#N/A
Oct-19	0.694	#N/A
Nov-19	0.700	#N/A
Dec-19	0.706	#N/A
Jan-20	0.711	#N/A
Feb-20	0.716	#N/A
1YR Strip	0.694	#N/A

# NATURAL GAS NEWS



**Prompt WTI (CL) Crude**  
Daily Sentiment

**BULLISH**



RESISTANCE  
56.52 & 56.94  
SUPPORT  
55.48 & 54.86

FOLLOW US ON TWITTER:



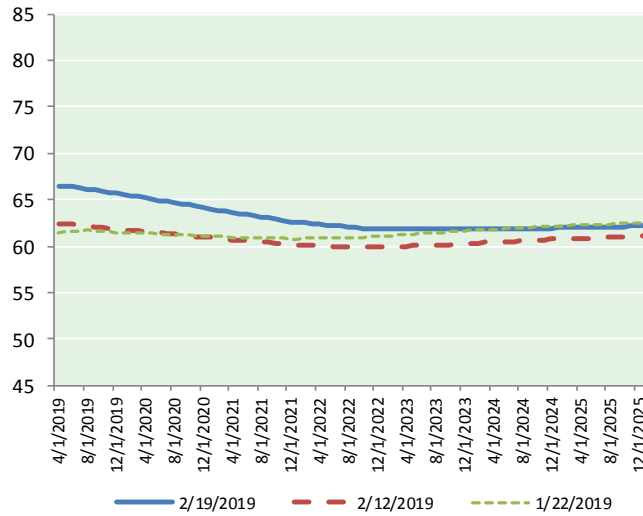
@MPG\_NatGasNews

**NYMEX Brent (BZ)**

Futures

Month	Close	Change
Mar-19	56.09	0.50
Apr-19	56.45	0.47
May-19	56.95	0.41
Jun-19	57.48	0.38
Jul-19	57.96	0.37
Aug-19	58.32	0.35
Sep-19	58.57	0.33
Oct-19	58.72	0.32
Nov-19	58.78	0.30
Dec-19	58.77	0.29
Jan-20	58.71	0.28
Feb-20	58.62	0.27
Mar-20	58.52	0.27
Apr-20	58.38	0.28
May-20	58.25	0.28
Jun-20	58.11	0.29
Jul-20	57.93	0.29
Aug-20	57.78	0.29
Sep-20	57.65	0.30
Oct-20	57.52	0.30
Nov-20	57.40	0.30
Dec-20	57.29	0.31
Jan-21	57.12	0.32
Feb-21	56.96	0.33
1YR Strip	57.95	0.36
2019	57.81	0.37
5YR Strip	56.35	0.44

**BRENT CRUDE FORWARD CURVE**



**FRAC Spread**

**Specifications**

Ethane :	42%	66,500 btu/g
Propane:	28%	90,830 btu/g
Butane:	11%	102,916 btu/g
Iso-Butane:	6%	98,935 btu/g
Natural Gasoline:	13%	115,021 btu/g

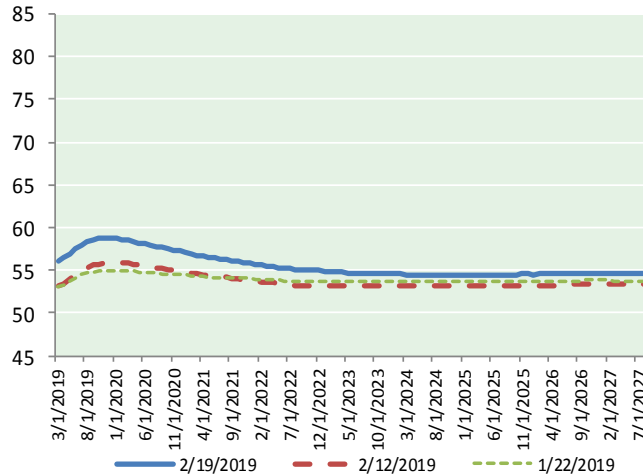
**Prompt NGL Futures**

	Mar-19	Close	Change
Butane	0.861	#N/A	
Iso-Butane	0.881	#N/A	
Nat Gasoline	1.157	#N/A	

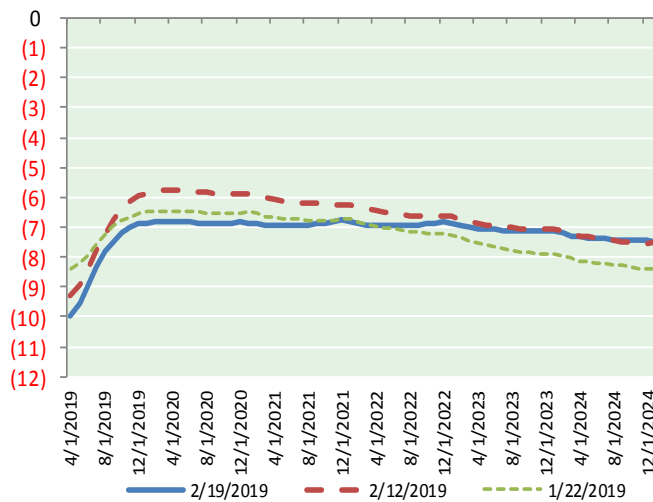
**NYMEX WTI (CL) Futures**

Month	Close	Change
Apr-19	66.45	0.20
May-19	66.47	0.25
Jun-19	66.40	0.28
Jul-19	66.25	0.29
Aug-19	66.15	0.30
Sep-19	66.04	0.32
Oct-19	65.92	0.33
Nov-19	65.81	0.33
Dec-19	65.67	0.33
Jan-20	65.56	0.34
Feb-20	65.44	0.34
Mar-20	65.32	0.33
Apr-20	65.21	0.34
May-20	65.07	0.32
Jun-20	64.93	0.32
Jul-20	64.81	0.32
Aug-20	64.67	0.32
Sep-20	64.54	0.32
Oct-20	64.41	0.33
Nov-20	64.26	0.33
Dec-20	64.10	0.32
Jan-21	63.98	0.32
Feb-21	63.86	0.32
Mar-21	63.74	0.32

**WTI CRUDE FORWARD CURVE**



**WTI-BRENT SPREAD**



1YR Strip	65.96	0.30
2019	66.13	0.29
5YR Strip	63.39	0.32